

V&V Reference Report

L2 ASCDS Version : 8.5.1.1

Observation 5005 - L2 Version 3
Chandra X-Ray Center

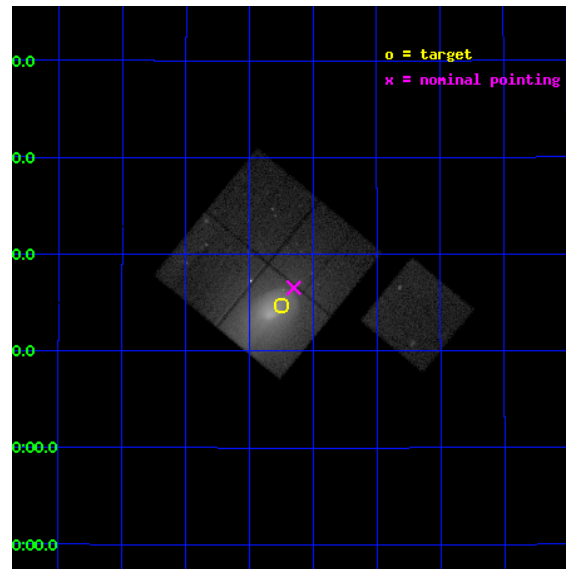
L2 Processing Date : Dec 22 2012

Contents

1	Front	2
2	OBI	3
2.1	OBI	3
2.1.1	Images	3
2.1.2	Bias	3
2.1.3	Parameters	4
2.1.4	Events	4
2.2	Compared Parameters	5
2.3	Aspect	6
2.4	Star Slots	9
2.4.1	Slot 3	9
2.4.2	Slot 4	10
2.4.3	Slot 5	11
2.4.4	Slot 6	12
2.4.5	Slot 7	13
2.5	FID Slots	14
2.5.1	Slot 0	14
2.5.2	Slot 1	15
2.5.3	Slot 2	16
A	Summary	17
A.1	Status	17
A.2	Comments	17

1 Front

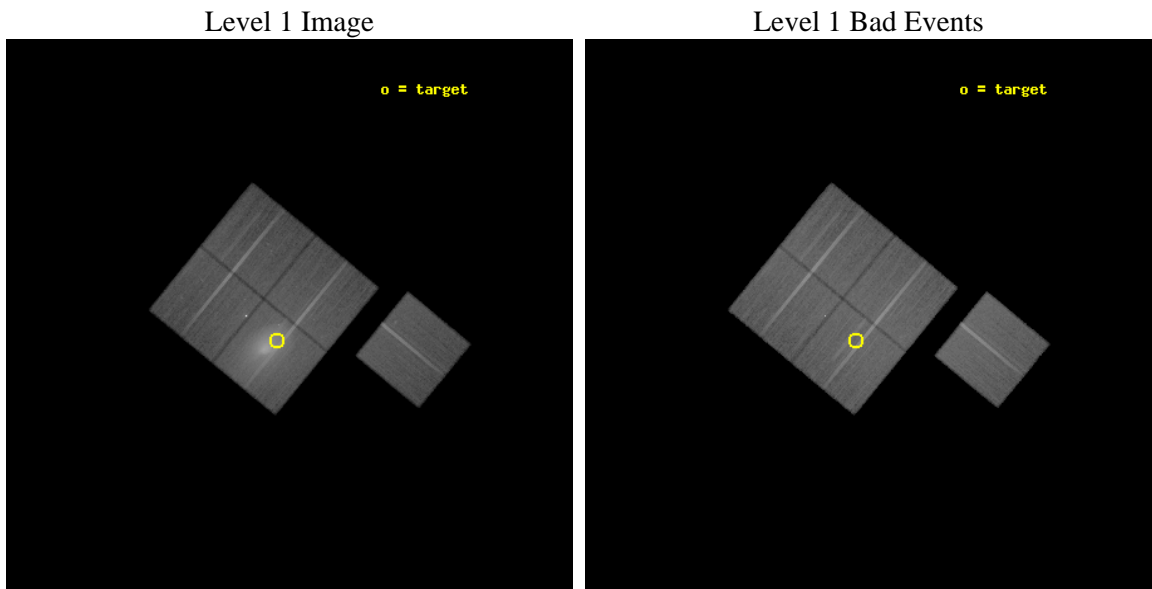
seq_num	800448	Sequence number
obs_id	5005	Observation id
title	Cluster studies: Determination of H0/q0	Proposal title
observer	DR. LEON VANSPEYBROECK	Principal investigator
object	A2142	Source name
dtcycle	0	
cycle	P	events from which exps? Prim/Second/Both
ra_targ	239.562917	Observer's specified target RA [deg]
dec_targ	27.245278	Observer's specified target Dec [deg]
ra_nom	239.53773494222	Nominal RA [deg]
dec_nom	27.275565160876	Nominal Dec [deg]
roll_nom	129.4131178631	Nominal Roll [deg]
revision	3	Processing version of data
ontime	45154.517952651	Sum of GTIs [s]
livetime	44564.540933327	Livetime [s]
ontime0	45154.517982423	Sum of GTIs [s]
ontime1	45154.517942637	Sum of GTIs [s]
ontime2	45157.658913016	Sum of GTIs [s]
ontime3	45154.517952651	Sum of GTIs [s]
ontime6	45154.517912805	Sum of GTIs [s]
l2events	486477	Number of level 2 events



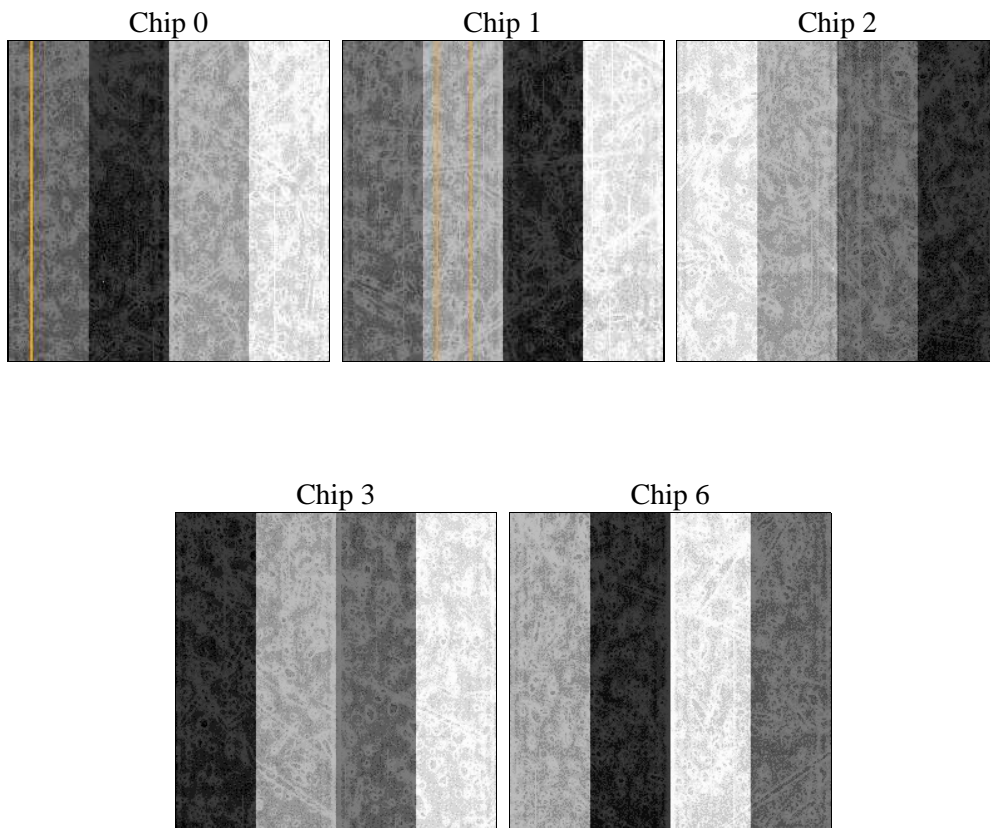
2 OBI

2.1 OBI

2.1.1 Images



2.1.2 Bias



2.1.3 Parameters

obi_num	2	Obi number	sched_exp_time	45000.000000	[s] Scheduled observation exposure time
ascdsver	8.5.1.1	Processing system revision	ontime	45154.517952651	Sum of GTIs [s]
caldsver	4.5.5	 	ontime0	45154.517982423	Sum of GTIs [s]
date	2012-12-22T04:24:27	Date and time of file creation	ontime1	45154.517942637	Sum of GTIs [s]
revision	3	Processing version of data	ontime2	45157.658913016	Sum of GTIs [s]
			ontime3	45154.517952651	Sum of GTIs [s]
			ontime6	45154.517912805	Sum of GTIs [s]
			l1events	1798494	Number of level 1 events

2.1.4 Events

	ccd 0	ccd 1	ccd 2	ccd 3	ccd 6		ccd 0	ccd 1	ccd 2	ccd 3	ccd 6
level 1 events	271019	322198	318374	596201	290702	grade 0 events	14774	48702	28639	254253	12241
rejected events	236586	241262	267383	267521	258857		5%	15%	8%	42%	4%
rejected %	87%	74%	83%	44%	89%	grade 1 events	195	2300	270	1433	125
							0%	0%	0%	0%	0%
						grade 2 events	7149	12930	8970	36039	6530
							2%	4%	2%	6%	2%
						grade 3 events	3517	5608	3765	12632	3435
							1%	1%	1%	2%	1%
						grade 4 events	3234	5521	3775	12658	3287
							1%	1%	1%	2%	1%
						grade 5 events	10221	11833	9494	12395	11391
							3%	3%	2%	2%	3%
						grade 6 events	5786	8236	5888	13365	6388
							2%	2%	1%	2%	2%
						grade 7 events	226143	227068	257573	253426	247305
							83%	70%	80%	42%	85%

2.2 Compared Parameters

Parameter	Planned	Actual	Parameter	Planned	Actual
Instrument	ACIS	ACIS	Obspar format version number	7	7
Detector	ACIS-01236	ACIS-01236	Obspar file type	PREDICTED	ACTUAL
Grating	NONE	NONE	Obspar update status	NONE	UPDATED
Data mode	VFAINT	VFAINT	Number of optional ACIS chips dropped	0	0
Observation mode	POINTING	POINTING	On-chip summing requested	N	N
[deg] Pointing RA	239.566616	239.5377349422202	Subarray requested	NONE	NONE
[deg] Pointing Dec	27.266025	27.27556516087623	Alternating exposures requested	N	N
[deg] Pointing Roll	129.191199	129.4131178630997	[s] Primary exposure time	0.000000	3.1
[mm] SIM focus pos	-0.782348	-0.7809083437167272			
[mm] SIM defocus	0	0.001439871863259334			
[mm] SIM translation stage pos	-224.592463	-224.5962429424501			
[mm] SIM translation stage offset	-9	-8.996210060479569			
[s] Observation start time (MET)	229755310.184000	229754309.37414			
Observation start date	2005-04-13T04:54:06	2005-04-13T04:38:29			
[s] Observation end time (MET)	229800310.184000	229800769.55125			
Observation end date	2005-04-13T17:24:06	2005-04-13T17:32:49			
Read mode	TIMED	TIMED			

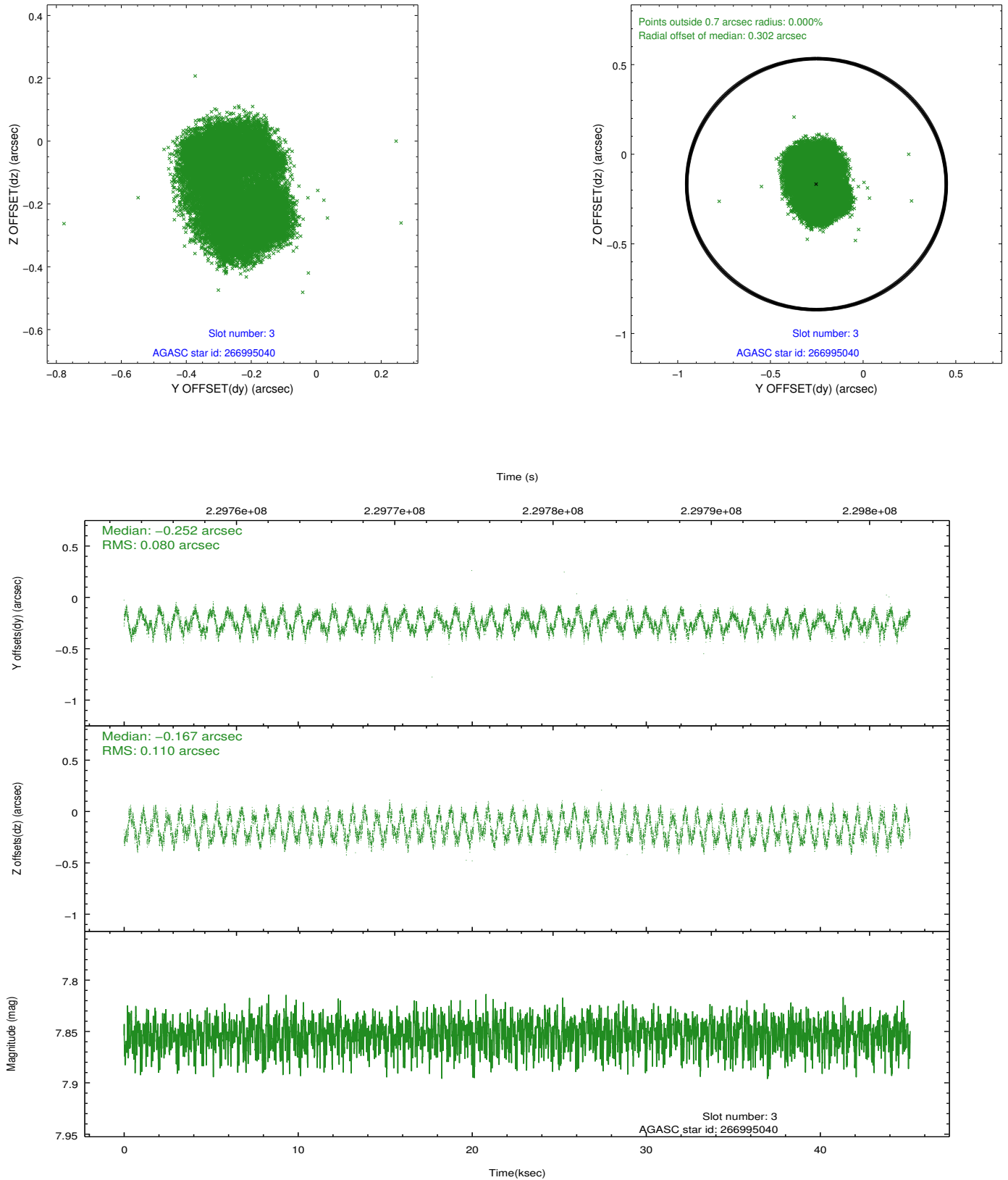
2.3 Aspect

Slot Statistics

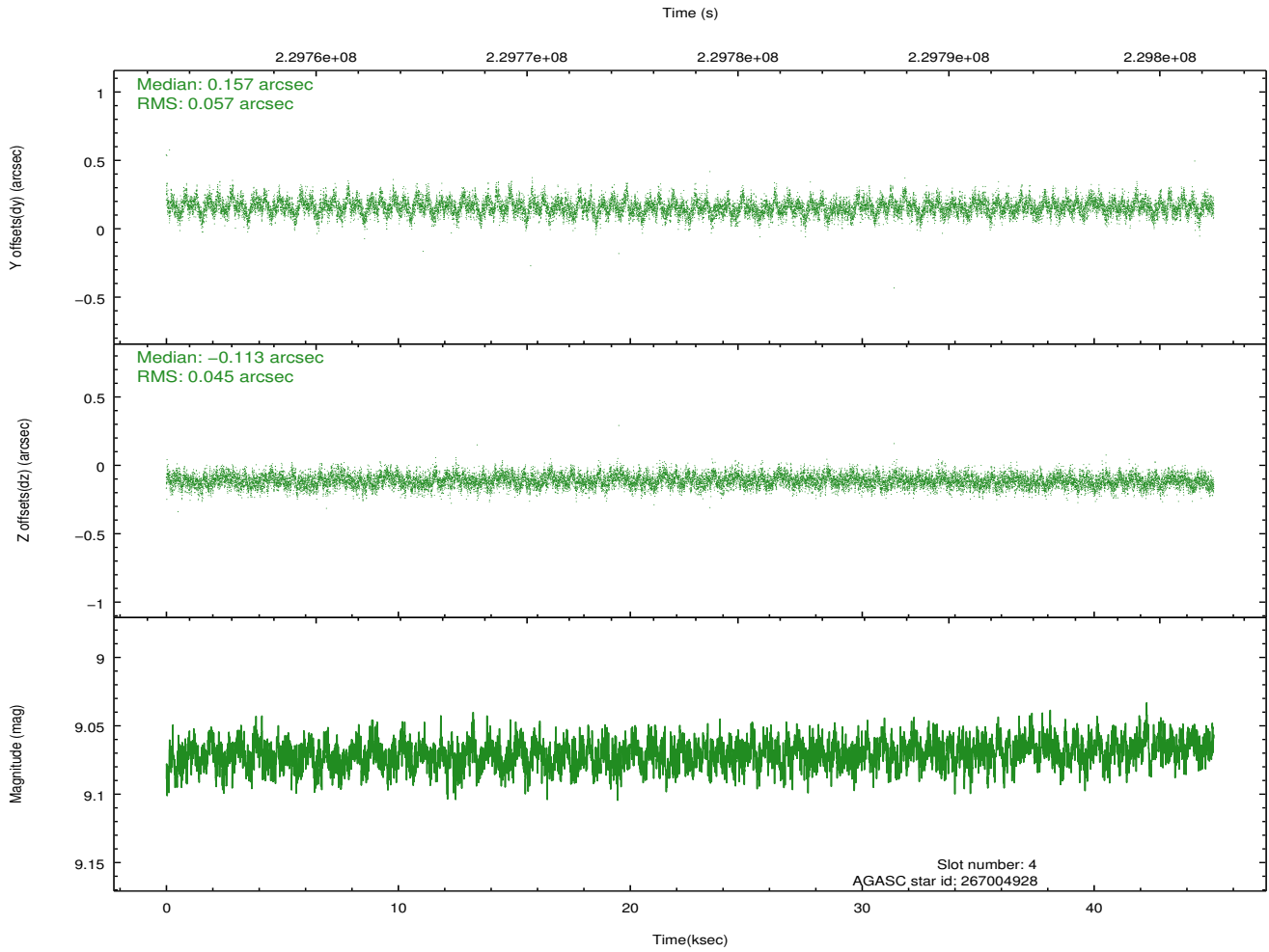
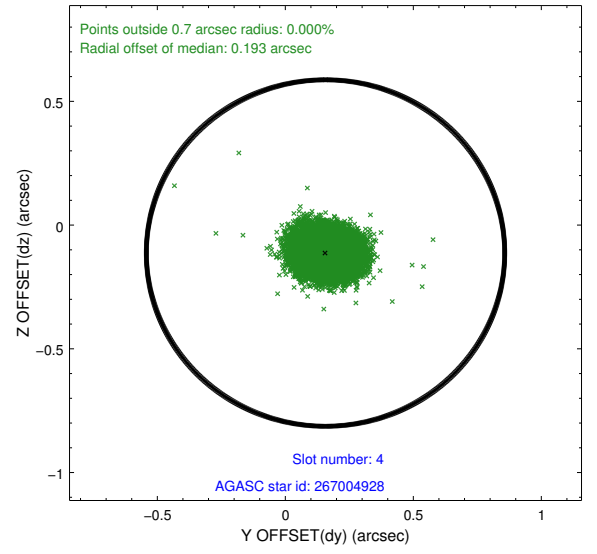
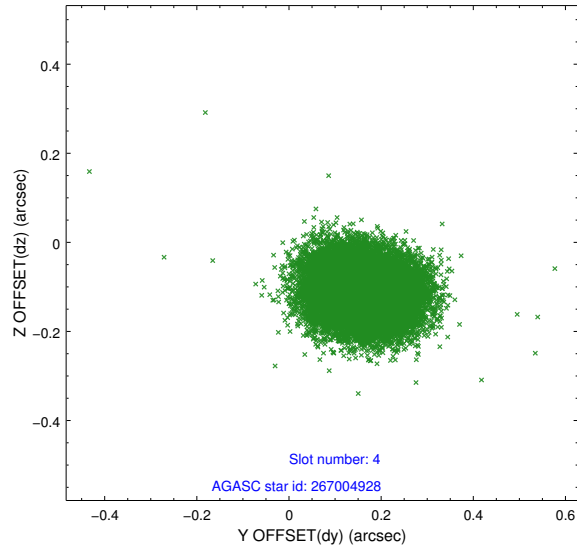
slot	status	id	mag	n_pts	med_dy	med_dz	dr1	dr2	ra	dec	mean_y	mean_z
0	FID	ACIS-I-1	7.22	11015	0.069	-0.102	0.012	0.021	0.000000	0.000000	933.56	-1017.31
1	FID	ACIS-I-2	7.17	11016	-0.182	0.039	0.009	0.016	0.000000	0.000000	-761.26	-1022.53
2	FID	ACIS-I-4	7.14	11014	0.015	0.129	0.010	0.018	0.000000	0.000000	2152.76	883.91
3	GUIDE	266995040	7.85	22025	-0.252	-0.167	0.151	0.205	239.014769	27.051479	522.25	1857.18
4	GUIDE	267004928	9.07	22021	0.157	-0.113	0.076	0.127	239.711277	26.663193	-1975.59	1010.68
5	GUIDE	267137048	7.87	22031	0.112	0.146	0.067	0.104	240.280451	27.143889	-1780.30	-1498.25
6	GUIDE	267006816	9.93	21868	0.005	-0.114	0.201	0.308	239.280899	27.325938	745.51	571.64
7	GUIDE	267139016	9.16	22019	-0.009	0.231	0.126	0.191	240.326918	27.469213	-961.49	-2348.55

2.4 Star Slots

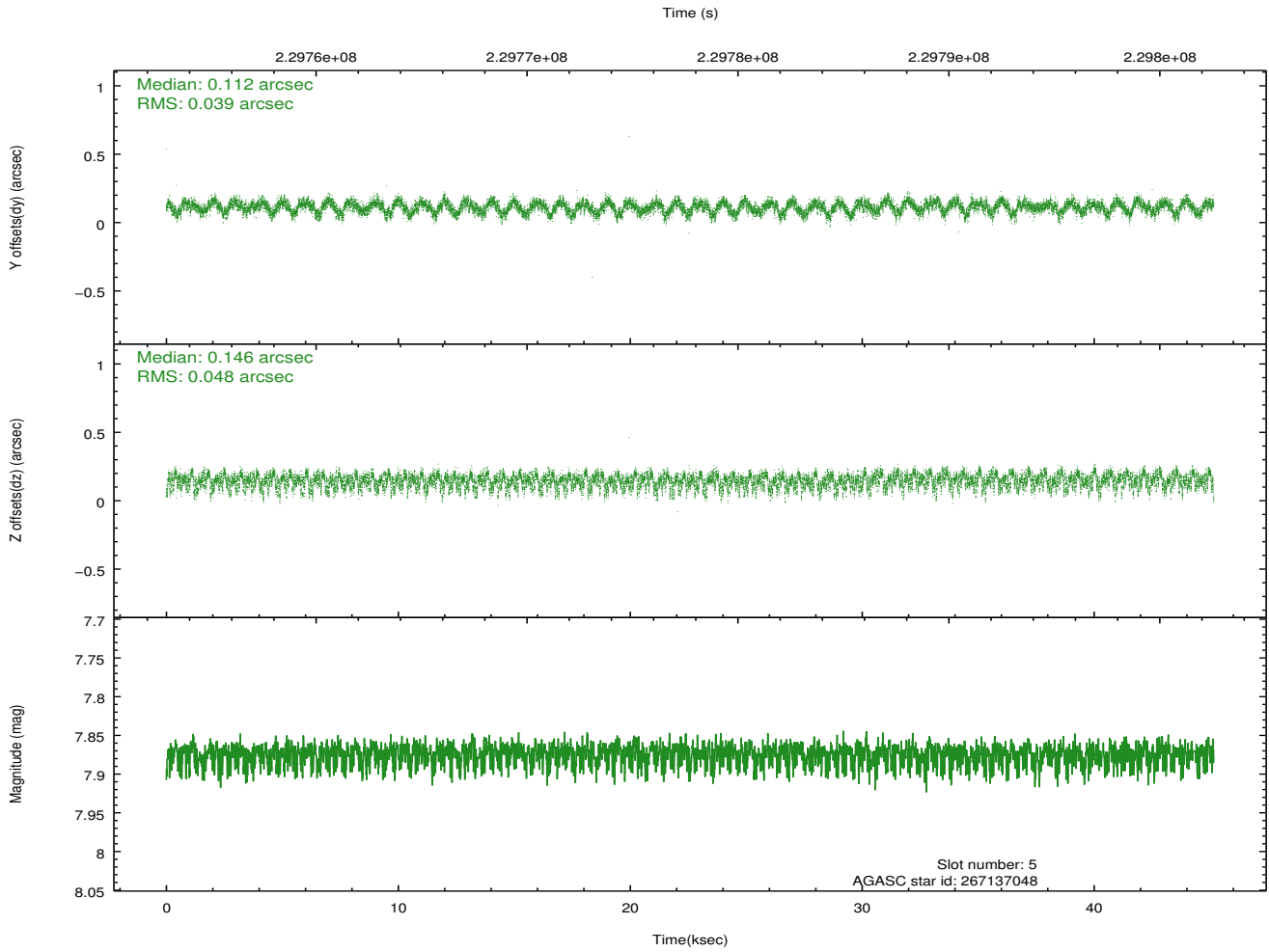
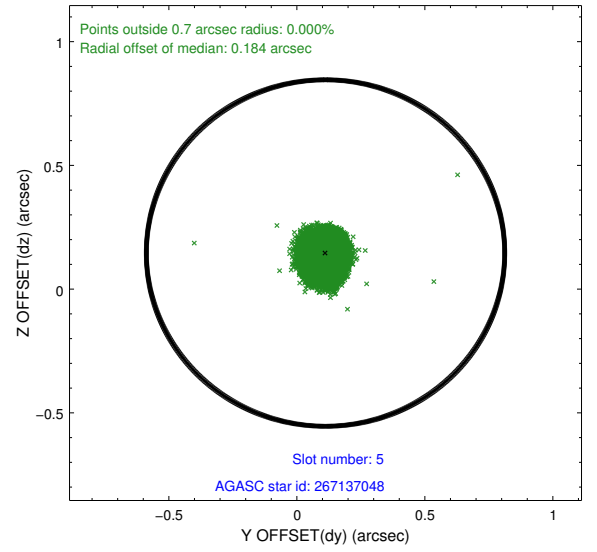
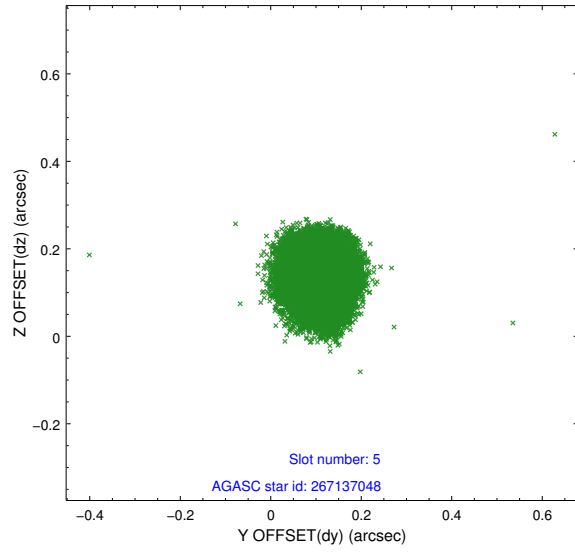
2.4.1 Slot 3



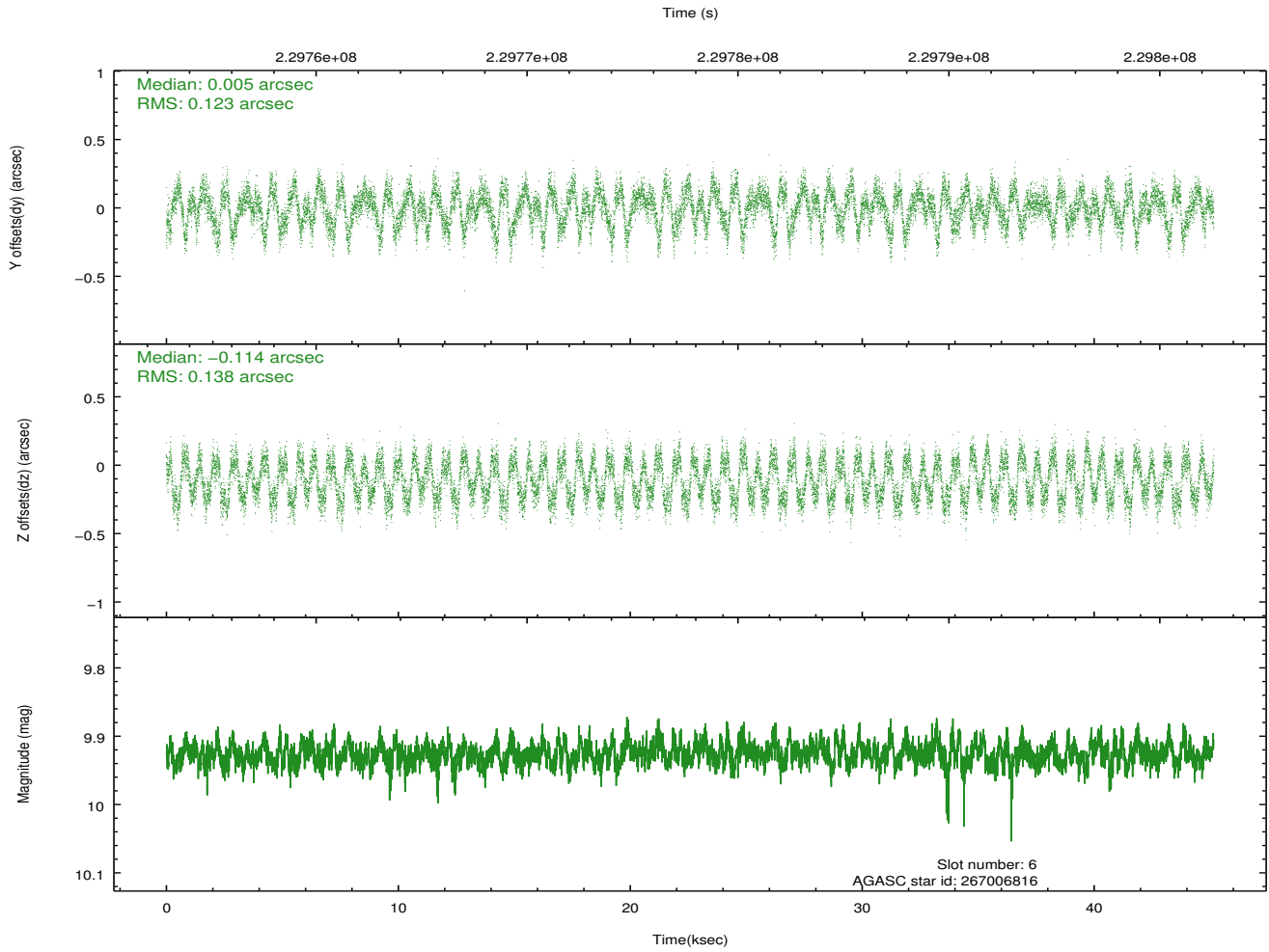
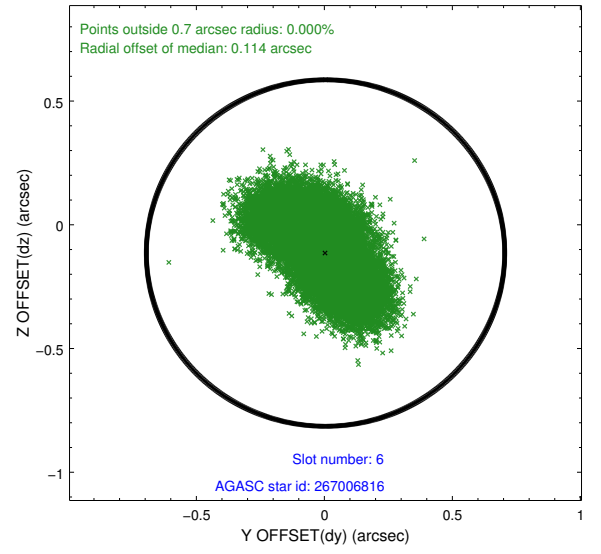
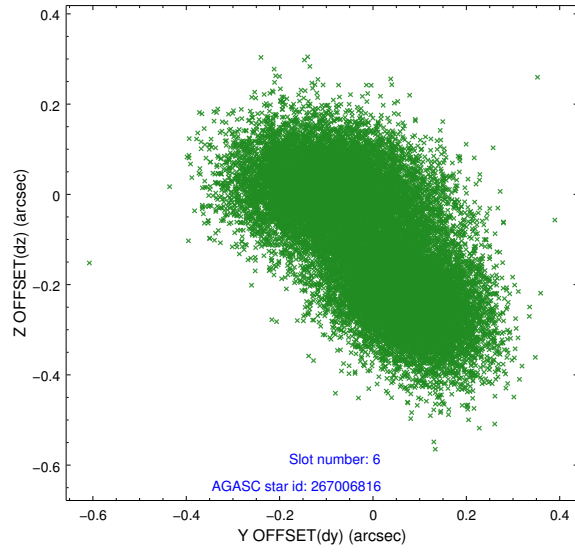
2.4.2 Slot 4



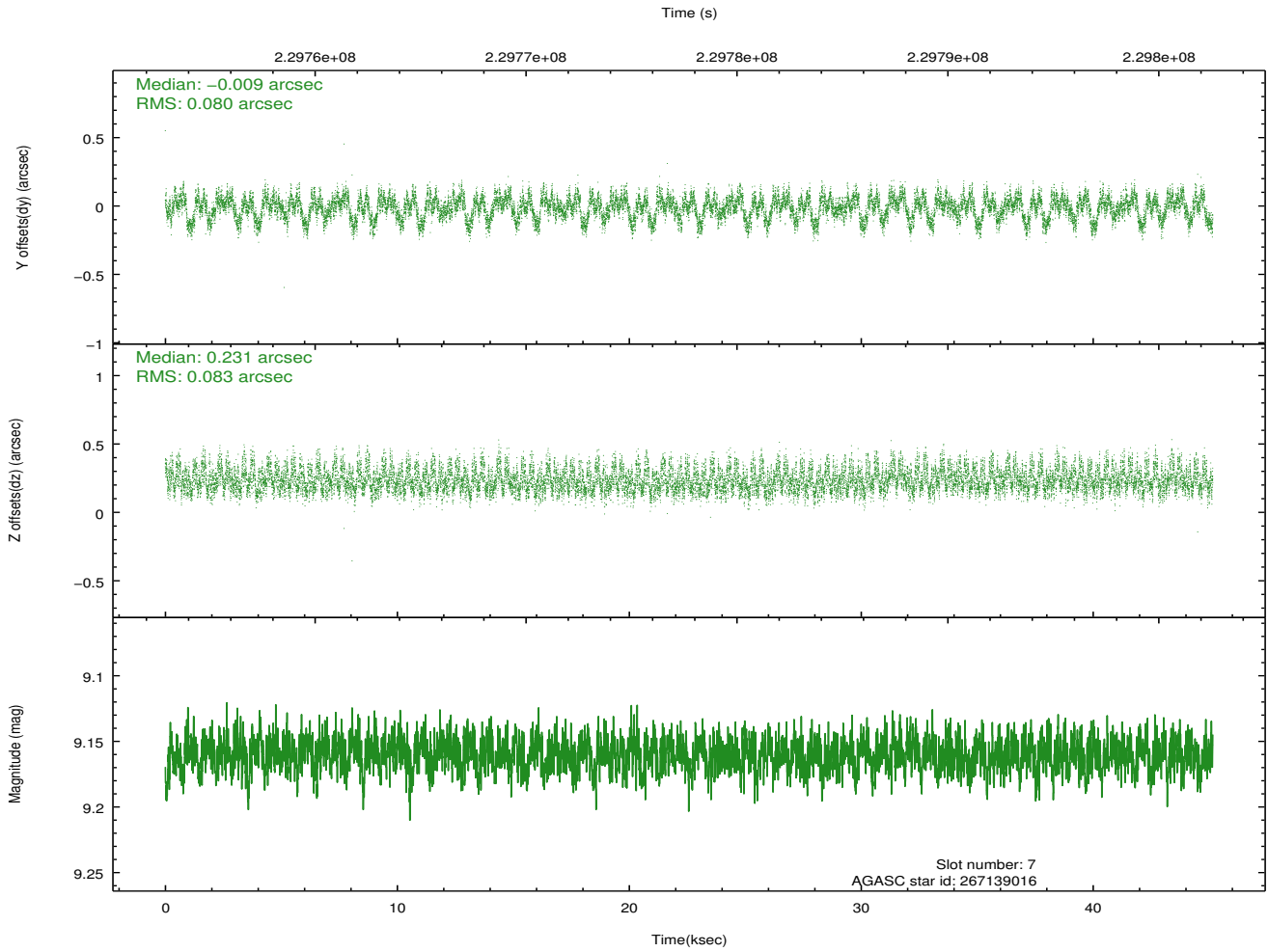
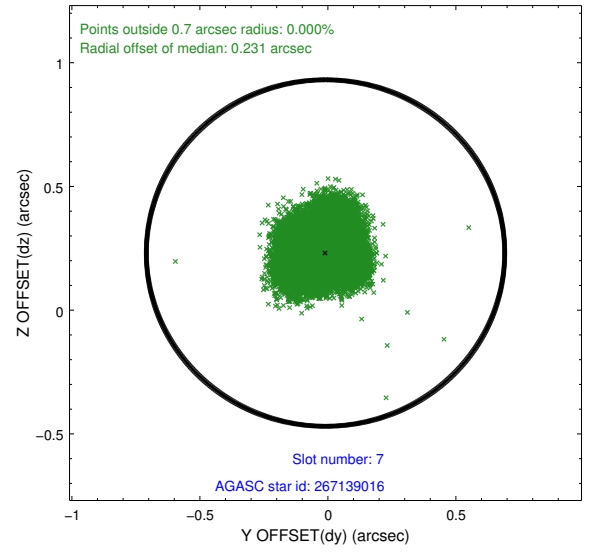
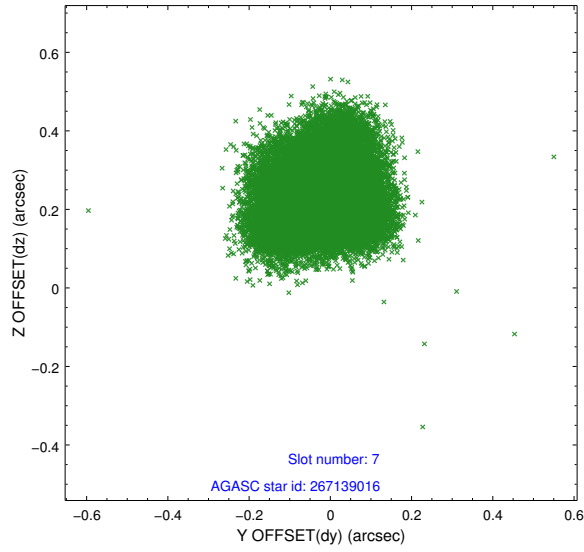
2.4.3 Slot 5



2.4.4 Slot 6

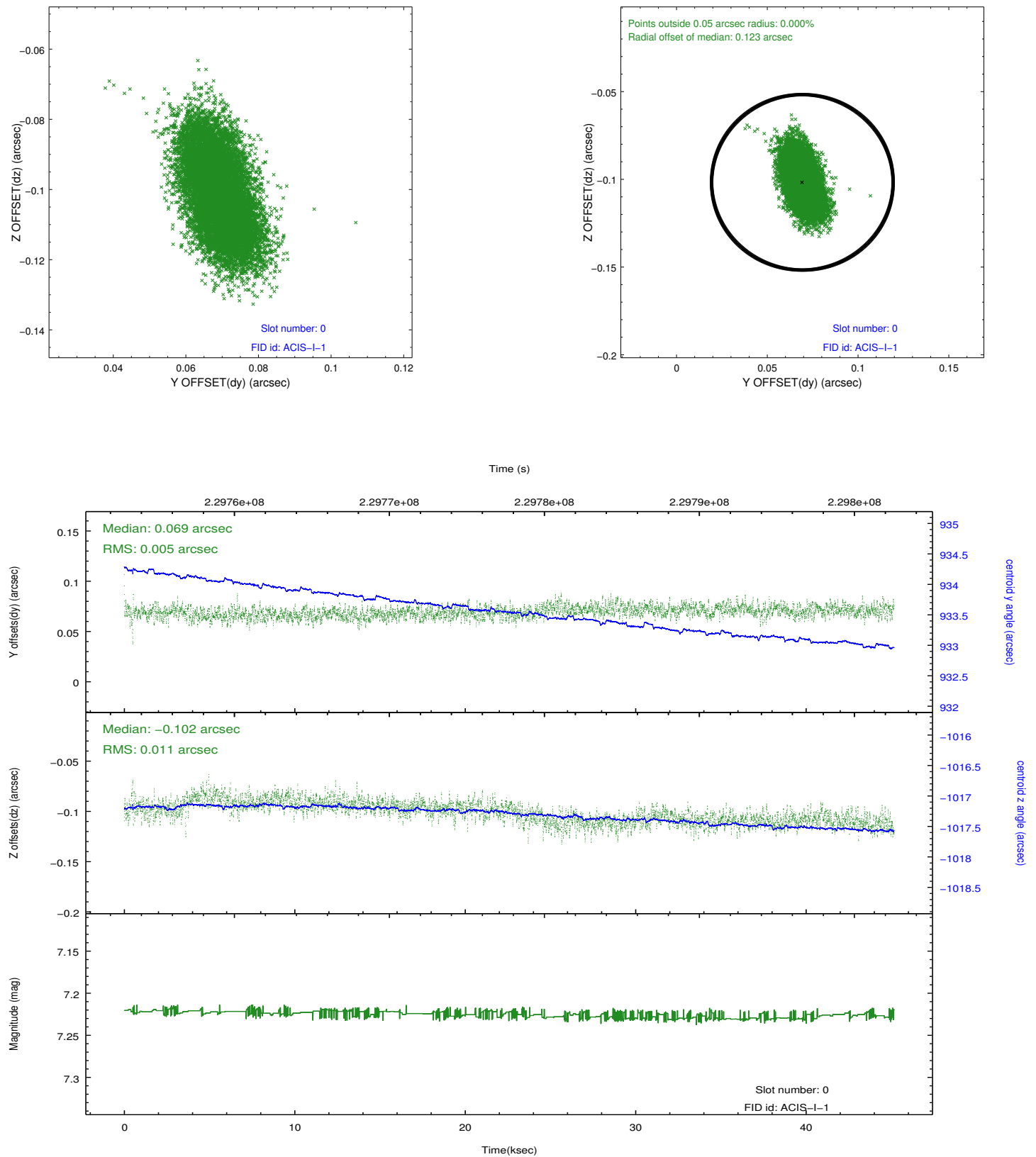


2.4.5 Slot 7

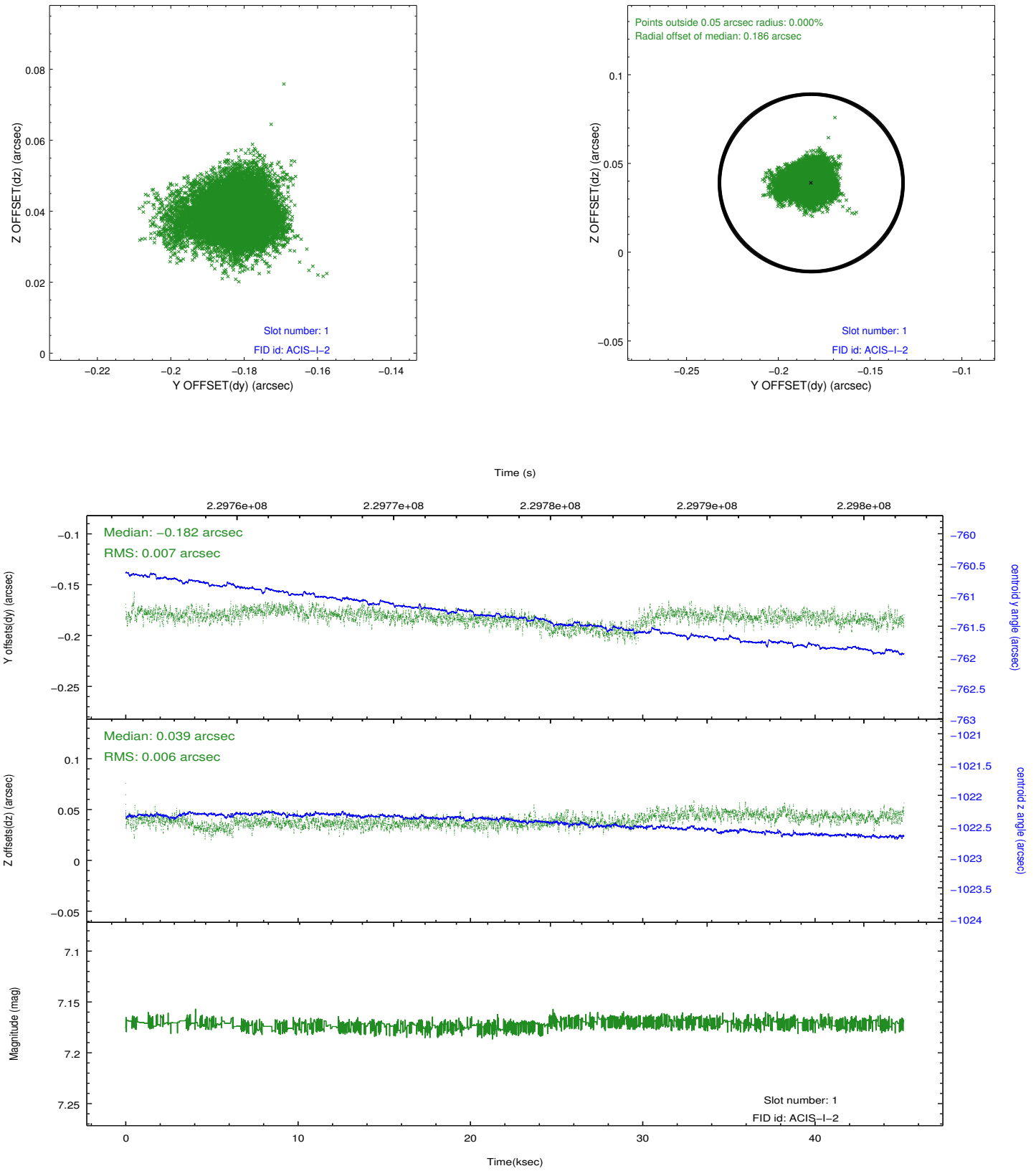


2.5 FID Slots

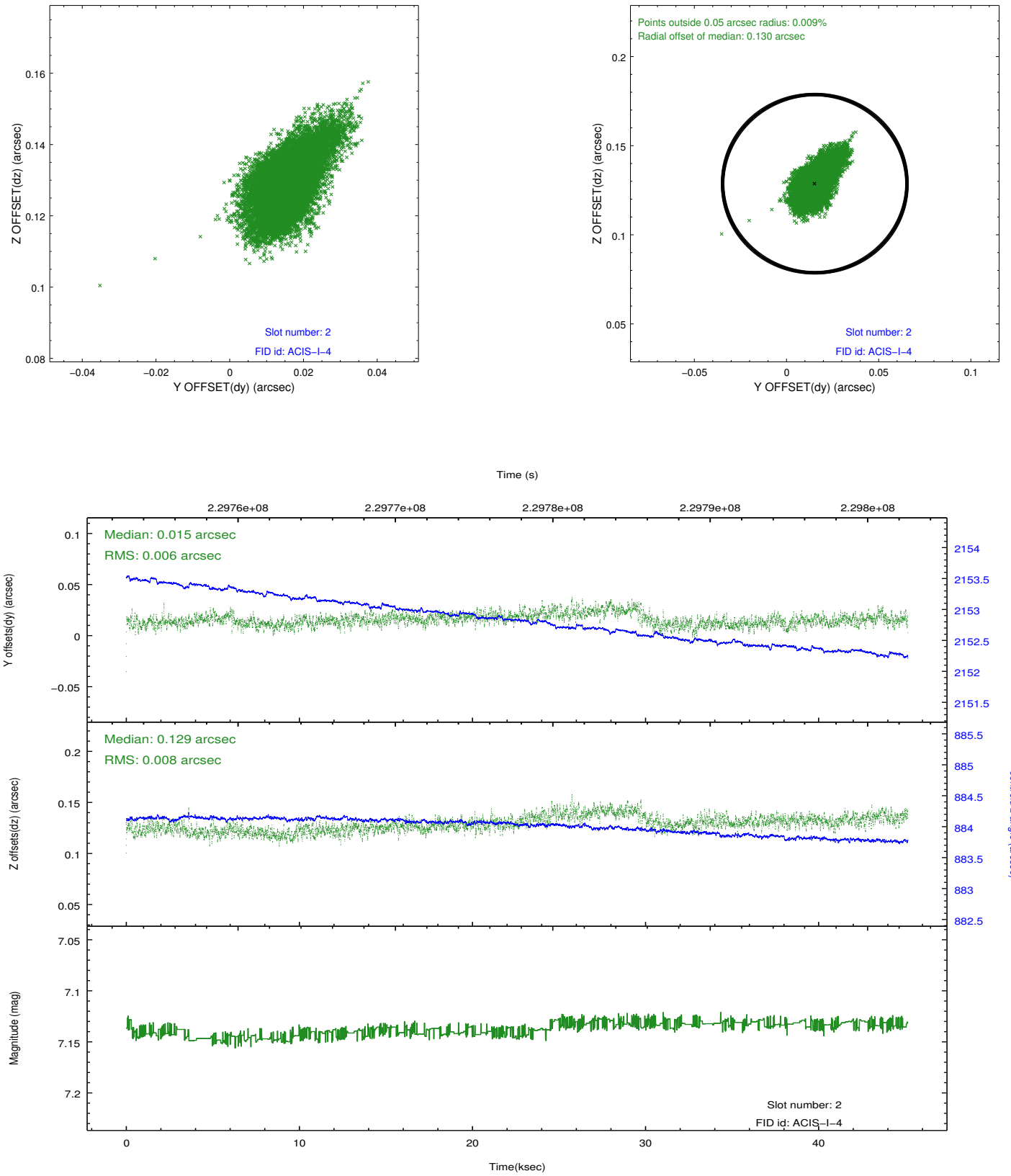
2.5.1 Slot 0



2.5.2 Slot 1



2.5.3 Slot 2



A Summary

A.1 Status

V&V Scientist	Jen Lauer
V&V Date (YYYY-MM-DD)	2013.01.15
V&V Edition	1
V&V Disposition and Status	OK
V&V Charge Time	45.15451

A.2 Comments