

# V&V Reference Report

## L2 ASCDS Version : 7.6.7

Observation 5002 - L2 Version 002  
Chandra X-Ray Center

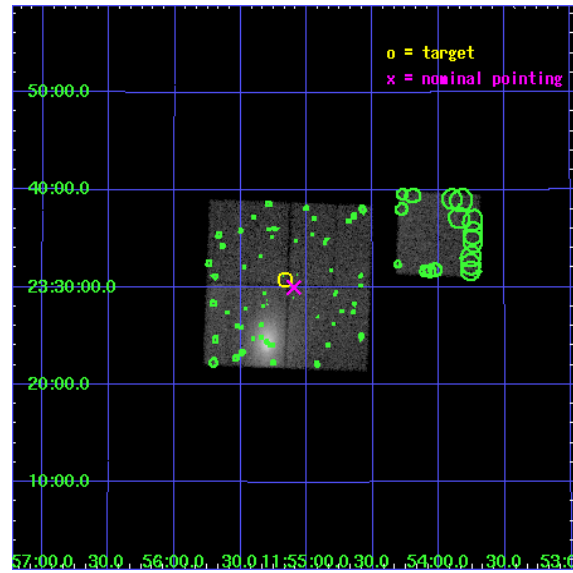
L2 Processing Date: Feb 21 2006

## Contents

<b>1</b>	<b>Front</b>	<b>2</b>
<b>2</b>	<b>OBI</b>	<b>3</b>
2.1	OBI . . . . .	3
2.1.1	Images . . . . .	3
2.1.2	Bias . . . . .	3
2.1.3	Parameters . . . . .	4
2.1.4	Events . . . . .	4
2.2	Compared Parameters . . . . .	5
2.3	Aspect . . . . .	6
2.4	Star Slots . . . . .	9
2.4.1	Slot 3 . . . . .	9
2.4.2	Slot 4 . . . . .	10
2.4.3	Slot 5 . . . . .	11
2.4.4	Slot 6 . . . . .	12
2.4.5	Slot 7 . . . . .	13
2.5	FID Slots . . . . .	14
2.5.1	Slot 0 . . . . .	14
2.5.2	Slot 1 . . . . .	15
2.5.3	Slot 2 . . . . .	16
<b>3</b>	<b>Point Sources</b>	<b>17</b>
<b>A</b>	<b>Summary</b>	<b>18</b>
A.1	Status . . . . .	18
A.2	Comments . . . . .	18

# 1 Front

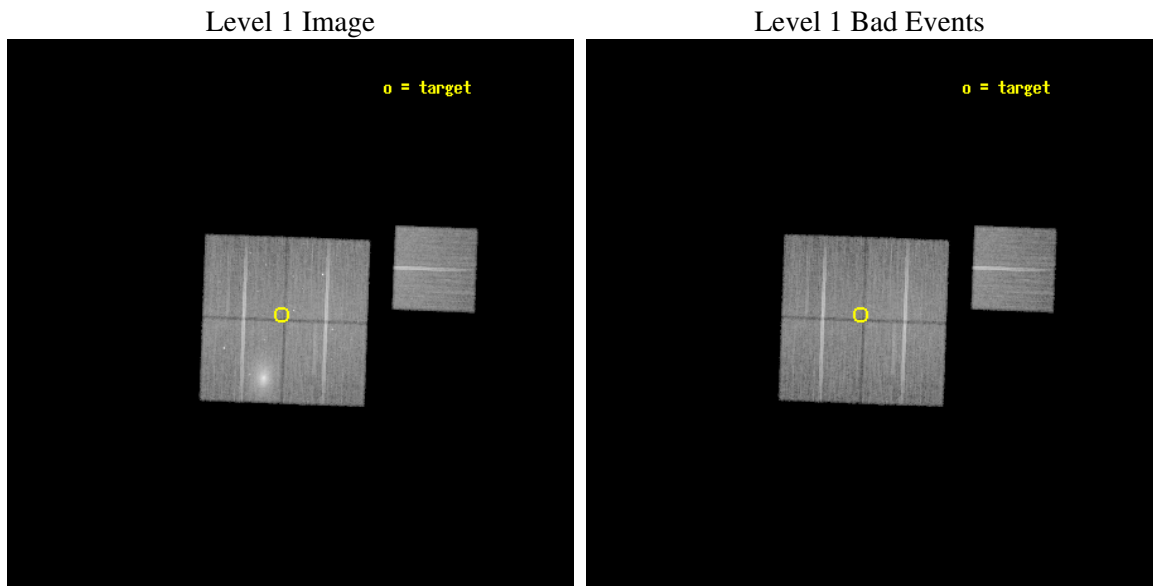
seq_num	800445
obs_id	5002
title	Baryon fraction profiles of relaxed clusters at large radii
observer	Dr. Steven Murray
object	A1413
dtcycle	0
cycle	P
ra_targ	178.79
dec_targ	23.513
ra_nom	178.77423015546
dec_nom	23.500098695913
roll_nom	92.131082038667
revision	2
ontime	37147.258918405
livetime	36661.902633221
ontime0	37147.258918405
ontime1	37150.39992857
ontime2	37144.117928177
ontime3	37140.976967782
ontime6	37147.25895822
l2events	161647



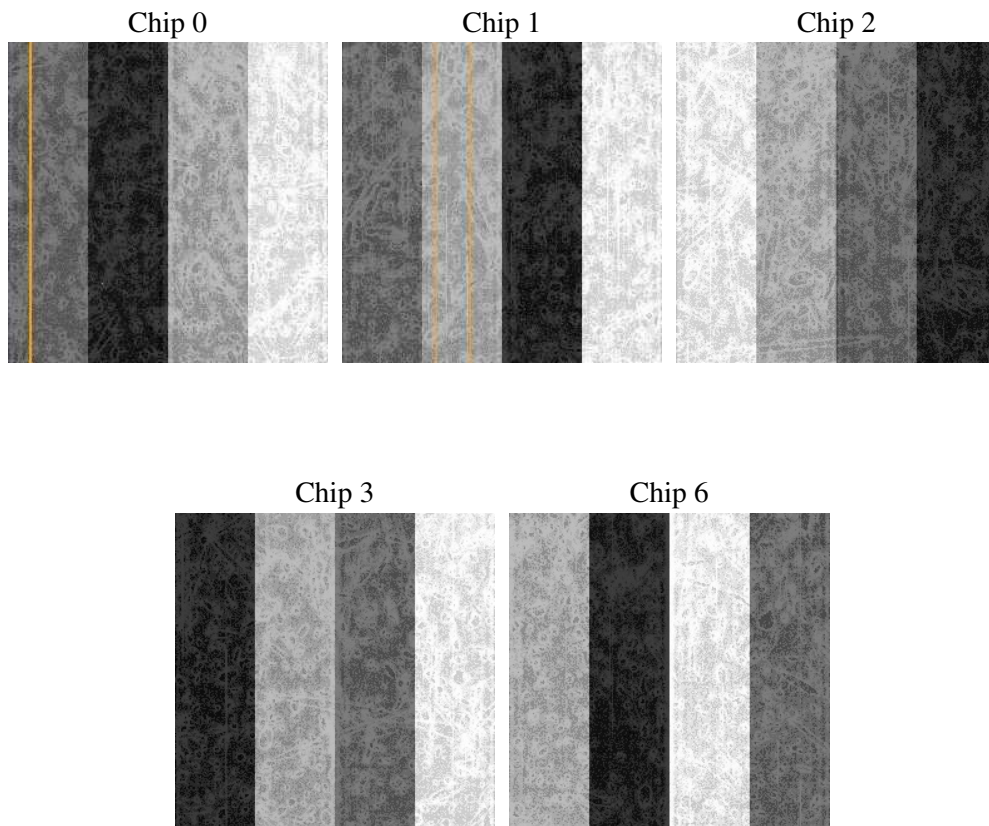
## 2 OBI

### 2.1 OBI

#### 2.1.1 Images



#### 2.1.2 Bias



### 2.1.3 Parameters

obi_num	0
ascdsver	7.6.7
caldbver	3.2.1
date	2006-02-21T23:27:00
revision	2

sched_exp_time	37000.000000
ontime	37560.245488644
ontime0	37560.245488644
ontime1	37563.386498809
ontime2	37557.104498416
ontime3	37553.963538021
ontime6	37560.24552846
l1events	1202073

### 2.1.4 Events

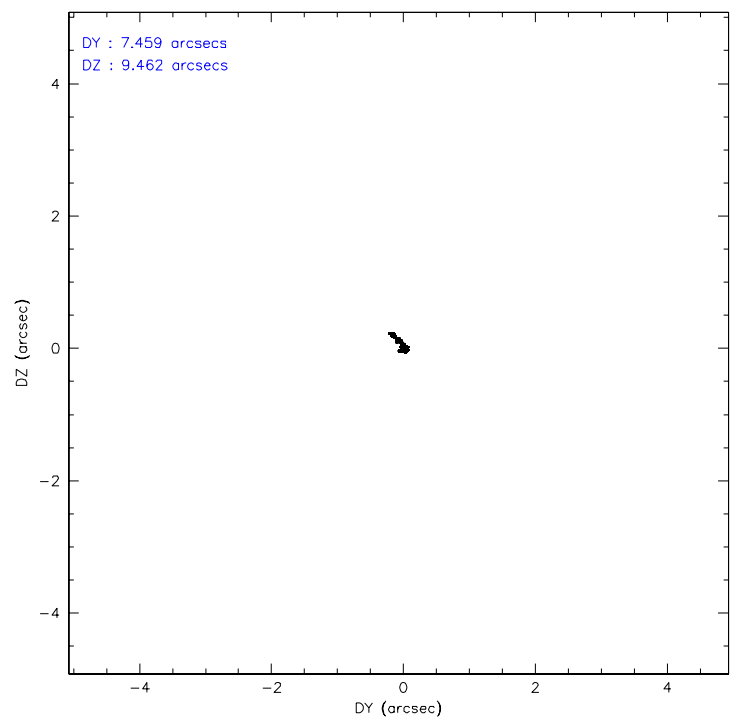
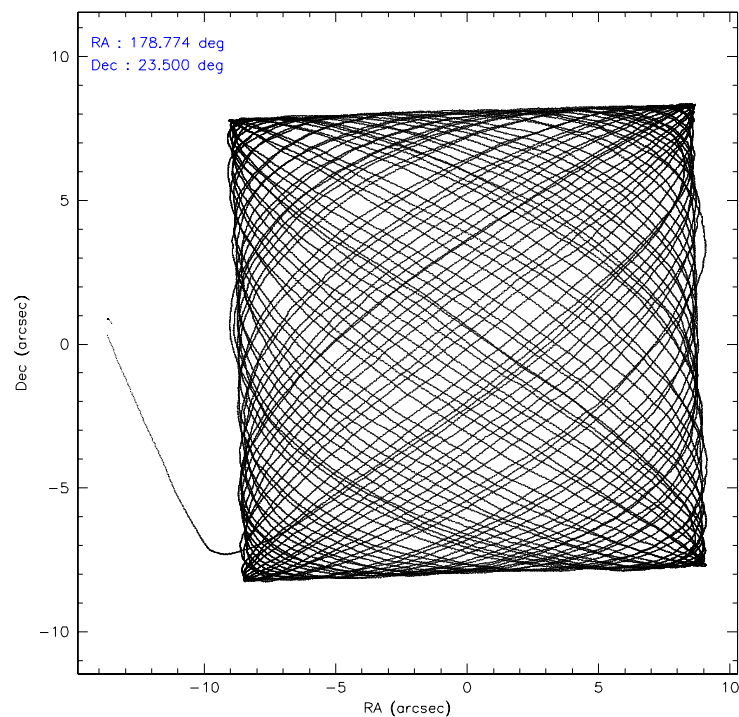
	ccd 0	ccd 1	ccd 2	ccd 3	ccd 6
level 1 events	214859	279429	243512	237365	226908
rejected events	191064	193289	218349	210820	203900
rejected %	88%	69%	89%	88%	89%

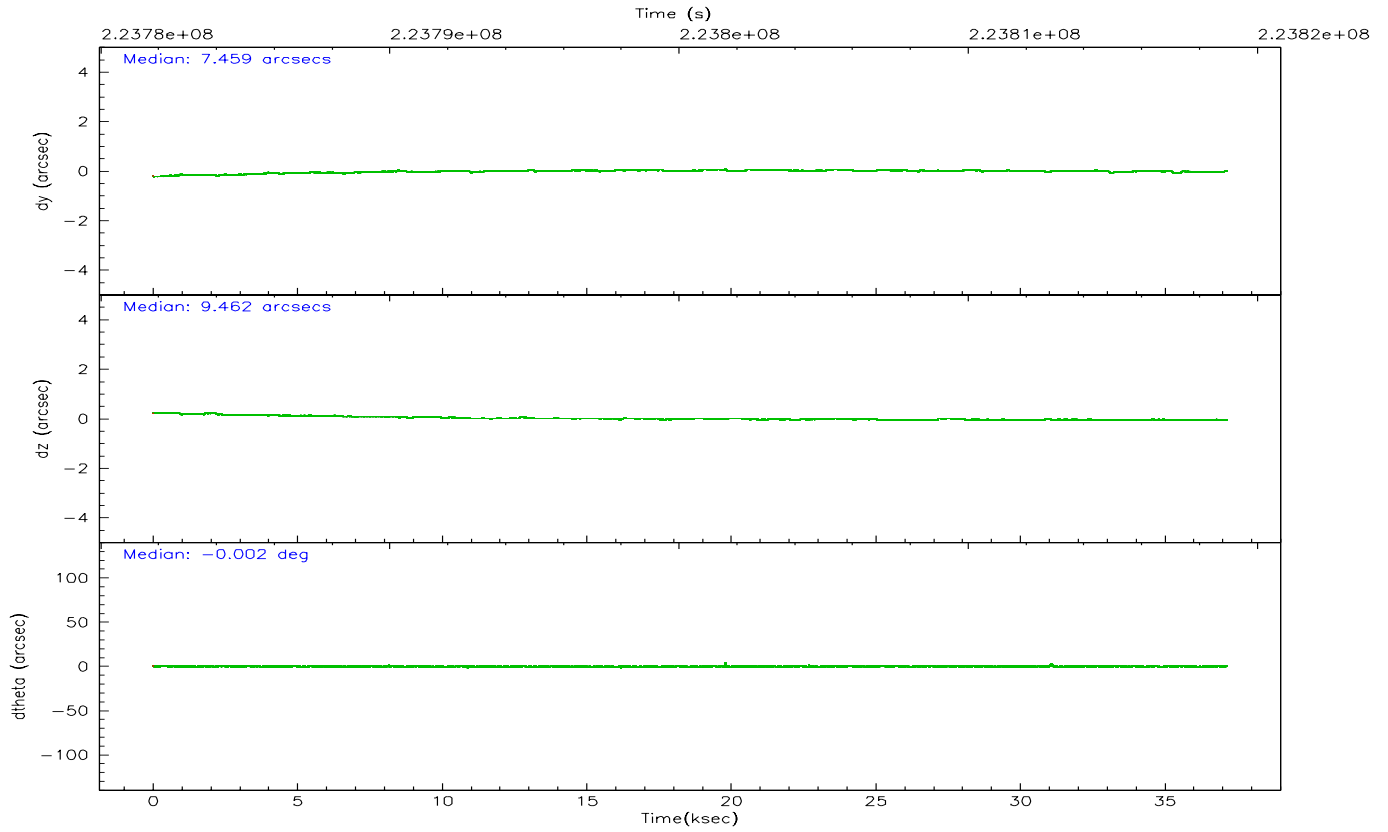
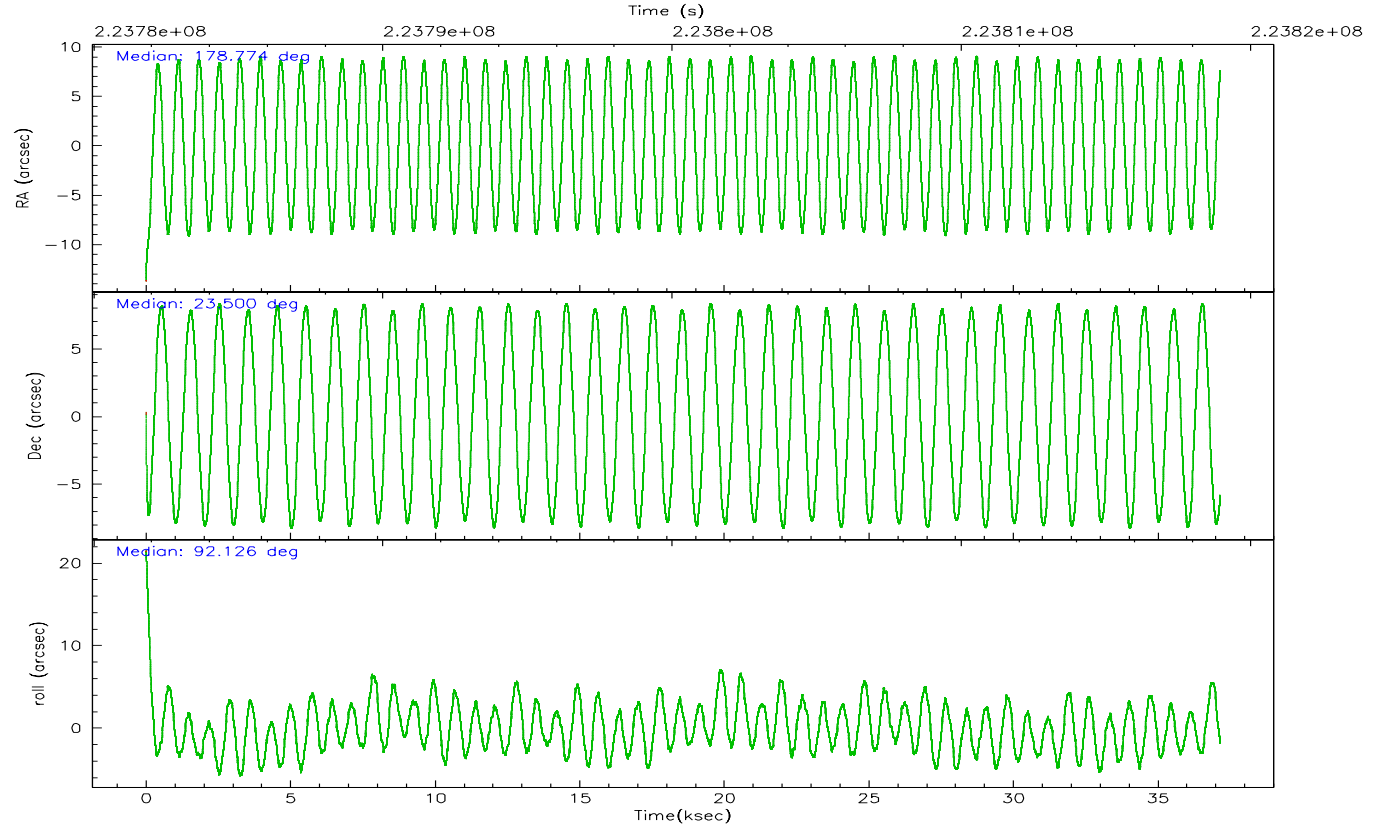
	ccd 0	ccd 1	ccd 2	ccd 3	ccd 6
grade 0 events	8992	58240	10452	11741	8092
	4%	20%	4%	4%	3%
grade 1 events	95	273	126	130	77
	0%	0%	0%	0%	0%
grade 2 events	5479	11915	5586	5156	5070
	2%	4%	2%	2%	2%
grade 3 events	2697	4826	2544	2777	2564
	1%	1%	1%	1%	1%
grade 4 events	2468	4892	2593	2682	2543
	1%	1%	1%	1%	1%
grade 5 events	8161	9109	7631	9205	8987
	3%	3%	3%	3%	3%
grade 6 events	4451	6881	4244	4473	5002
	2%	2%	1%	1%	2%
grade 7 events	182516	183293	210336	201201	194573
	84%	65%	86%	84%	85%

## 2.2 Compared Parameters

Parameter	Planned	Actual	Parameter	Planned	Actual
Instrument	ACIS	ACIS	Obspar format version number	6	6
Detector	ACIS-01236	ACIS-01236	Obspar file type	PREDICTED	ACTUAL
Grating	NONE	NONE	Obspar update status	NONE	UPDATED
Data mode	VFAINT	VFAINT	On-chip summing requested	N	N
Observation mode	POINTING	POINTING	Subarray requested	NONE	NONE
Pointing RA	178.790223	178.7742301554572	Alternating exposures requested	N	N
Pointing Dec	23.476995	23.50009869591296	Primary exposure time	0.000000	3.1
Pointing Roll	91.916016	92.1310820386674			
SIM focus pos (mm)	-0.782348	-0.7809083437167272			
SIM defocus (mm)	0	0.001439871863259334			
SIM translation stage pos (mm)	-233.592463	-233.5874344608287			
SIM translation stage offset (mm)	0	-0.005018542100998502			
Observation start time	223781960.184000	223780769.00338			
Observation start date	2005-02-03T01:38:16	2005-02-03T01:19:29			
Observation end time	223818960.184000	223819291.58012			
Observation end date	2005-02-03T11:54:56	2005-02-03T12:01:31			
Read mode	TIMED	TIMED			

## 2.3 Aspect





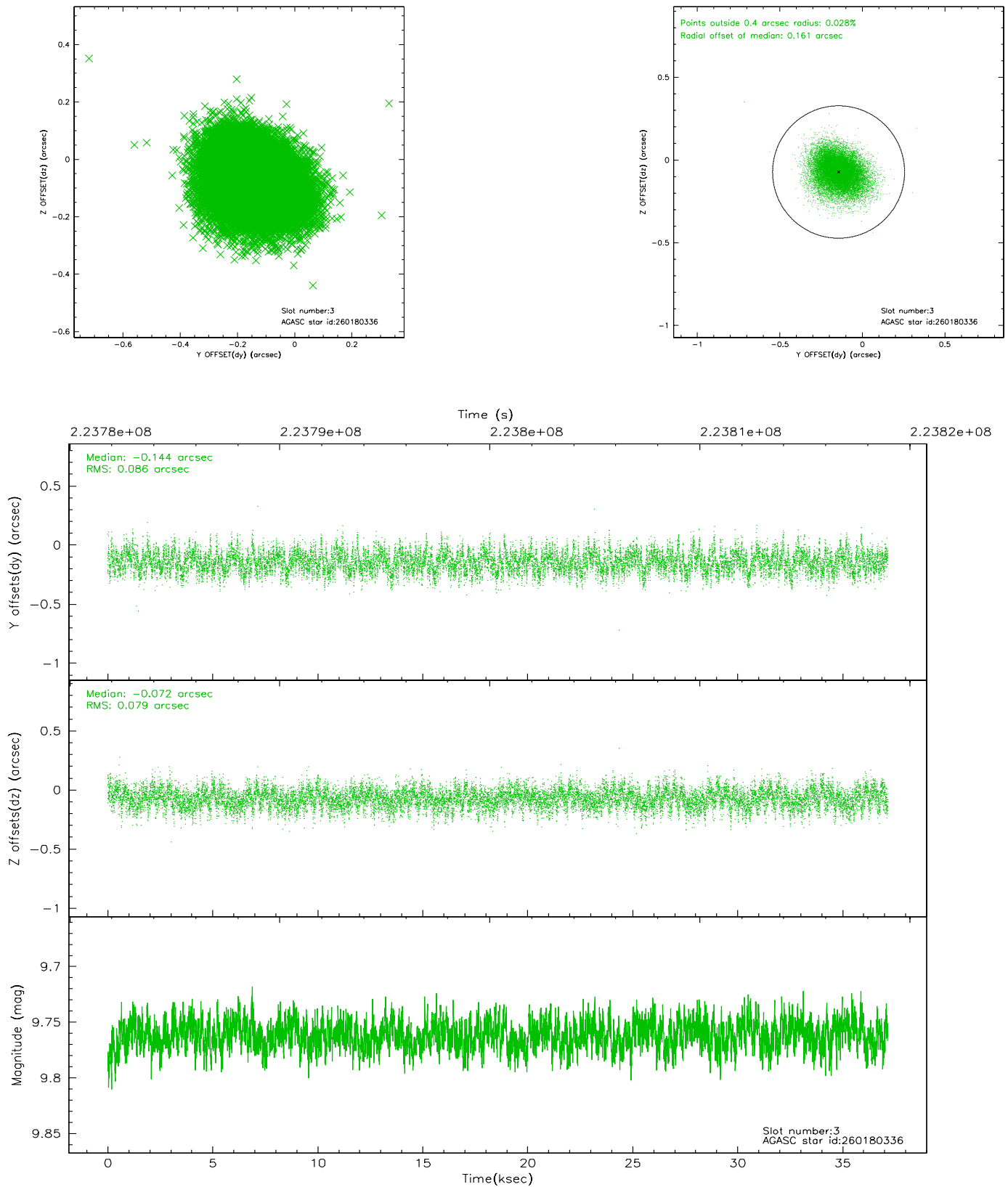
### Slot Statistics

slot	status	id	mag	n_pts	med_dy	med_dz	dr1	dr2	ra	dec	mean_y	mean_z
0	FID	ACIS-I-1	7.25	9062	-0.023	0.064	0.007	0.015	0.000000	0.000000	932.20	-832.88
1	FID	ACIS-I-5	7.23	9061	-0.123	0.015	0.006	0.012	0.000000	0.000000	-1815.99	1064.54
2	FID	ACIS-I-6	7.26	9063	0.056	-0.009	0.007	0.014	0.000000	0.000000	397.79	1709.06
3	GUIDE	260180336	9.76	18102	-0.144	-0.072	0.125	0.202	178.222989	23.655513	708.24	1848.26
4	GUIDE	260182304	9.22	18114	-0.006	-0.101	0.082	0.134	178.643100	23.810976	1218.18	443.83
5	GUIDE	260186296	9.58	18110	-0.088	0.141	0.111	0.181	179.246996	23.604894	412.56	-1520.80
6	GUIDE	260188192	9.15	18006	0.125	0.141	0.101	0.164	179.330149	22.976535	-1856.59	-1728.27
7	GUIDE	260188952	9.54	18108	0.120	-0.108	0.112	0.190	178.359974	22.948174	-1852.67	1489.51

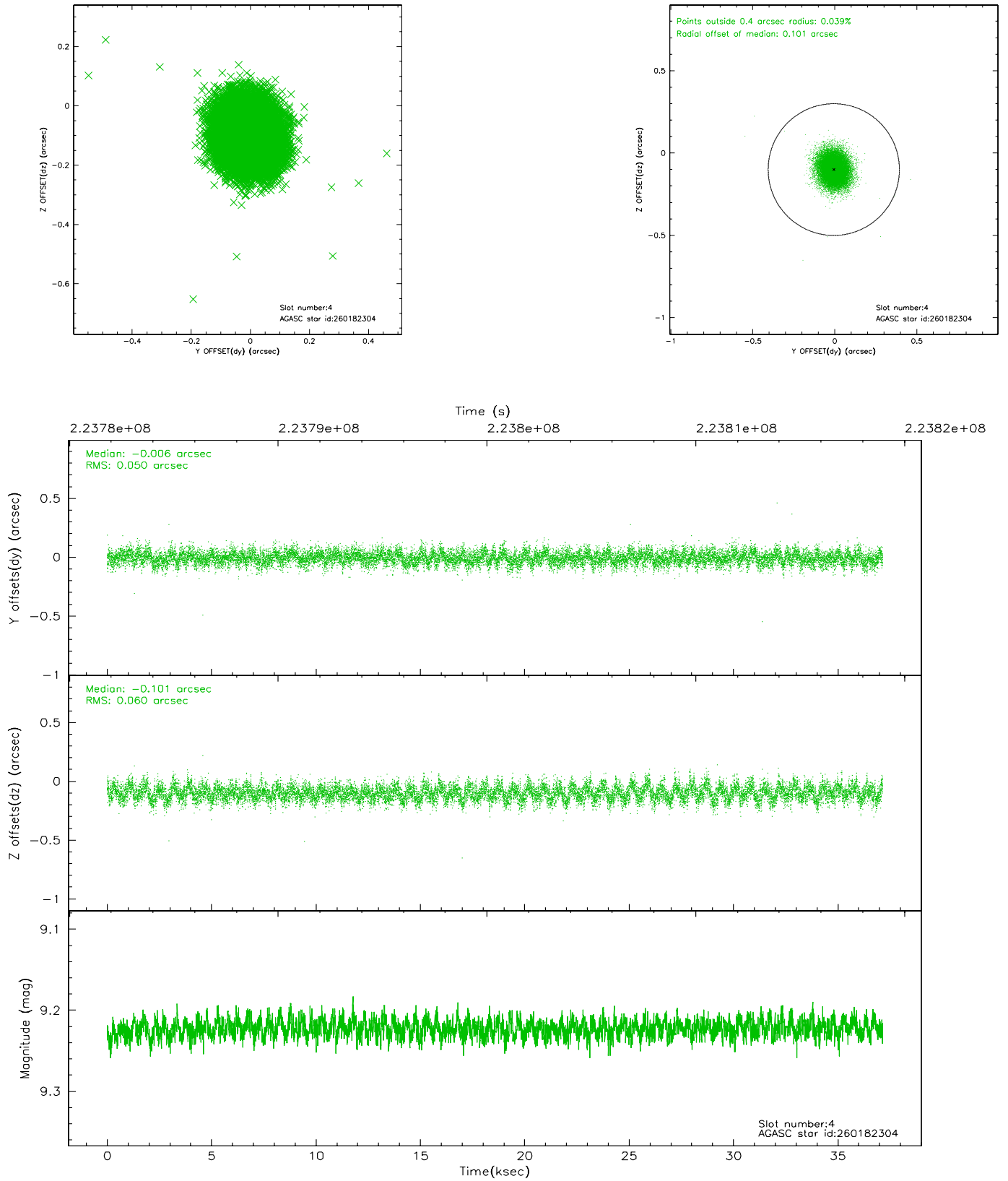


## 2.4 Star Slots

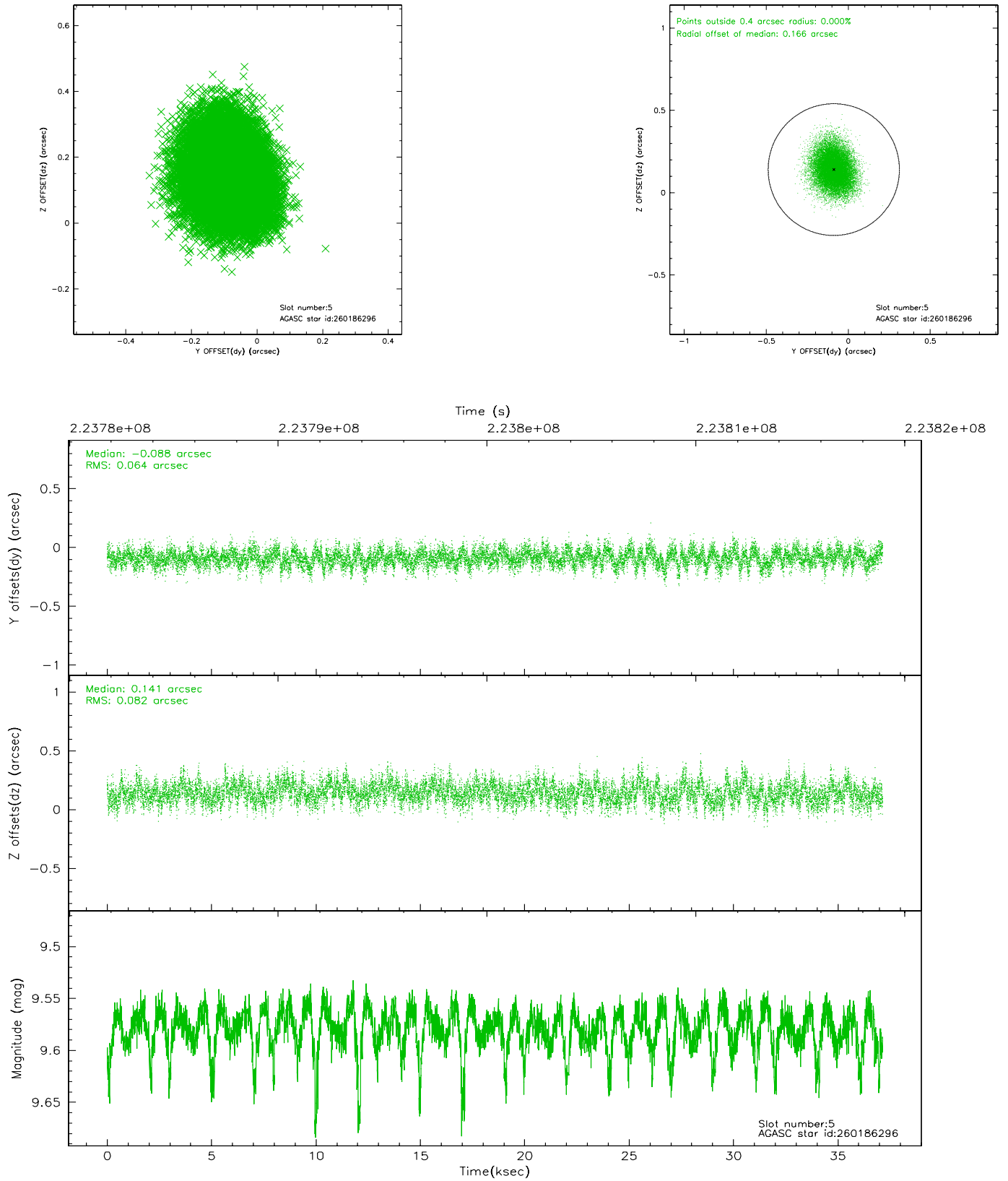
### 2.4.1 Slot 3



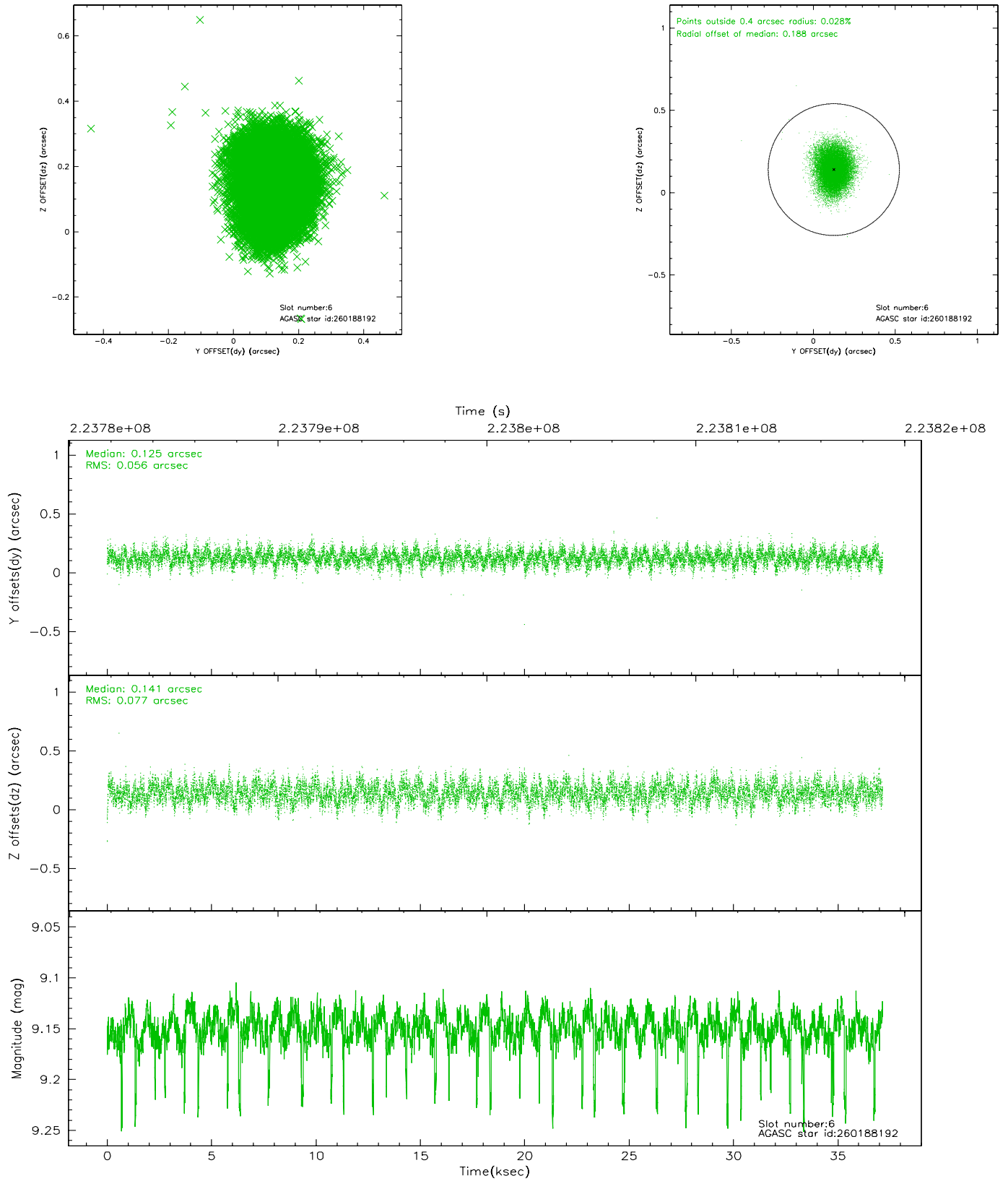
## 2.4.2 Slot 4



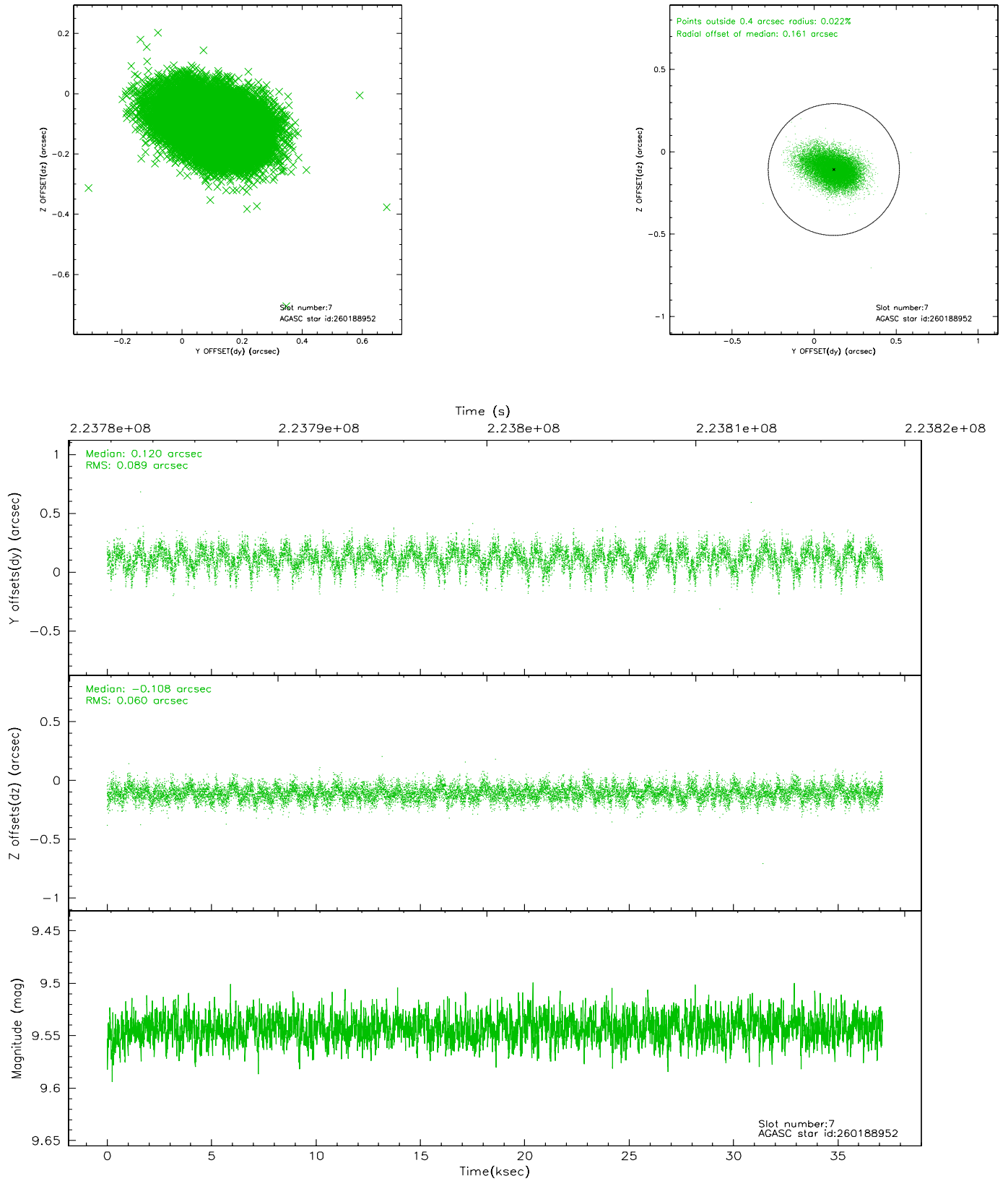
### 2.4.3 Slot 5



## 2.4.4 Slot 6

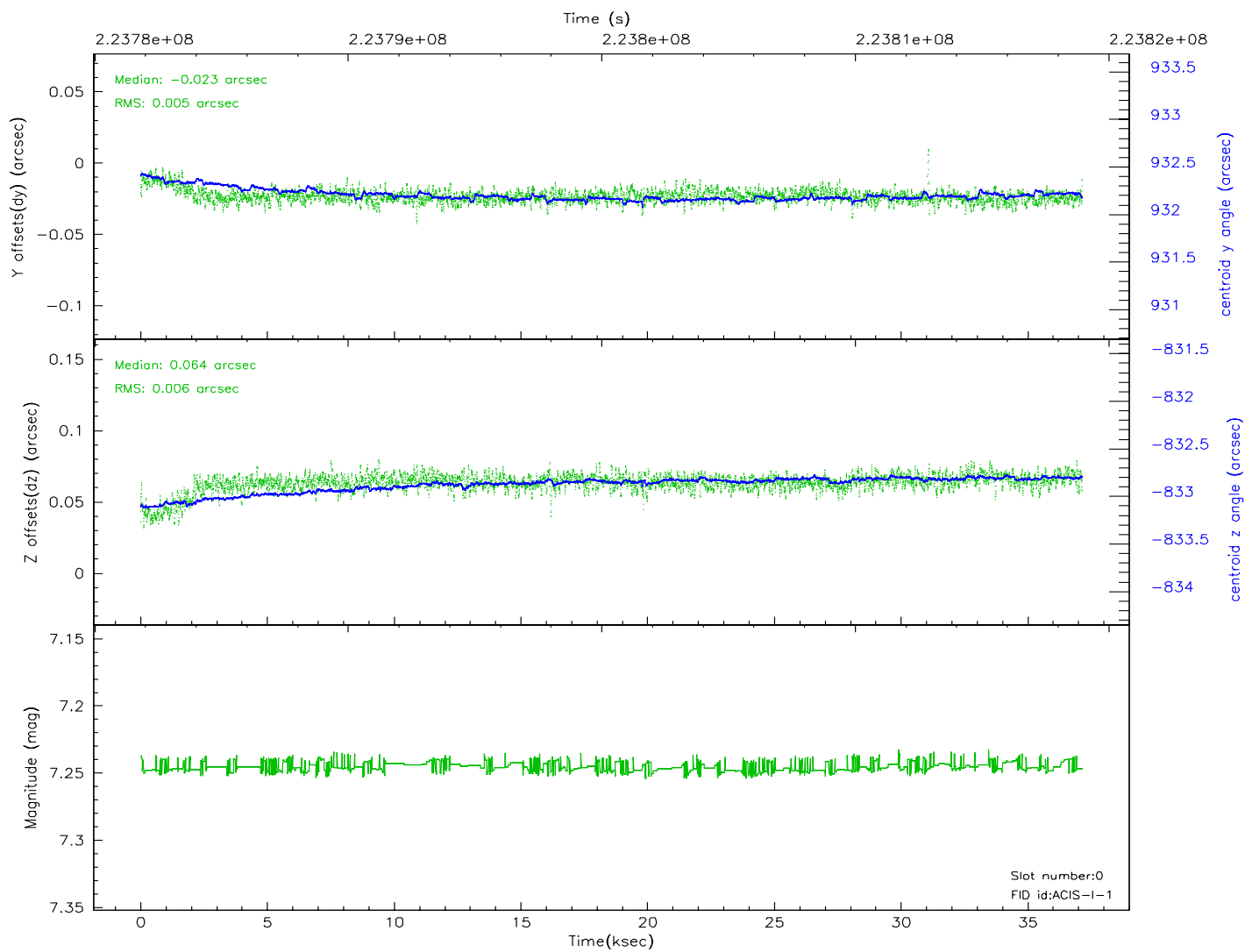
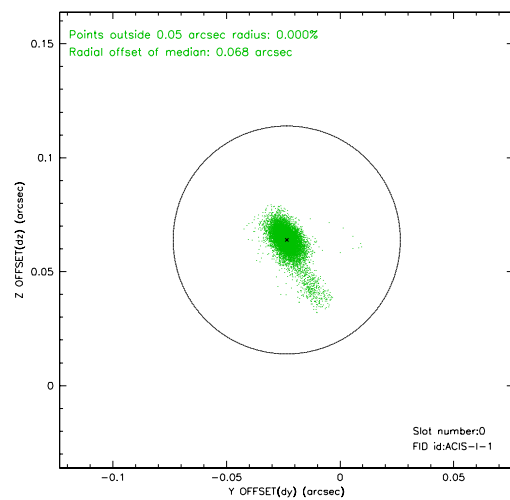
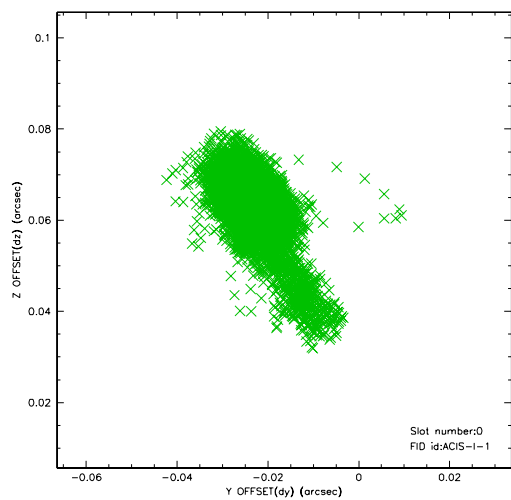


## 2.4.5 Slot 7

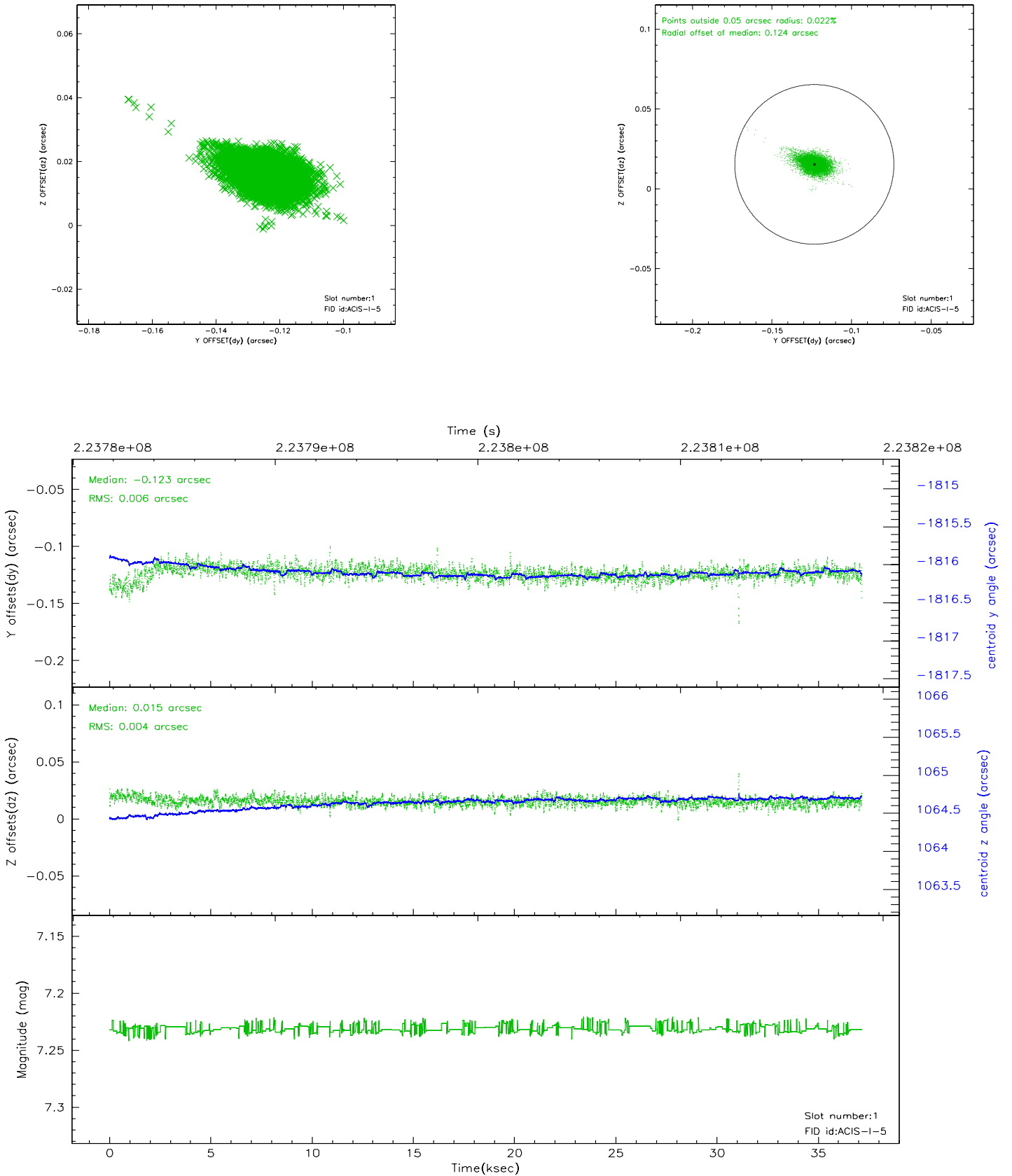


## 2.5 FID Slots

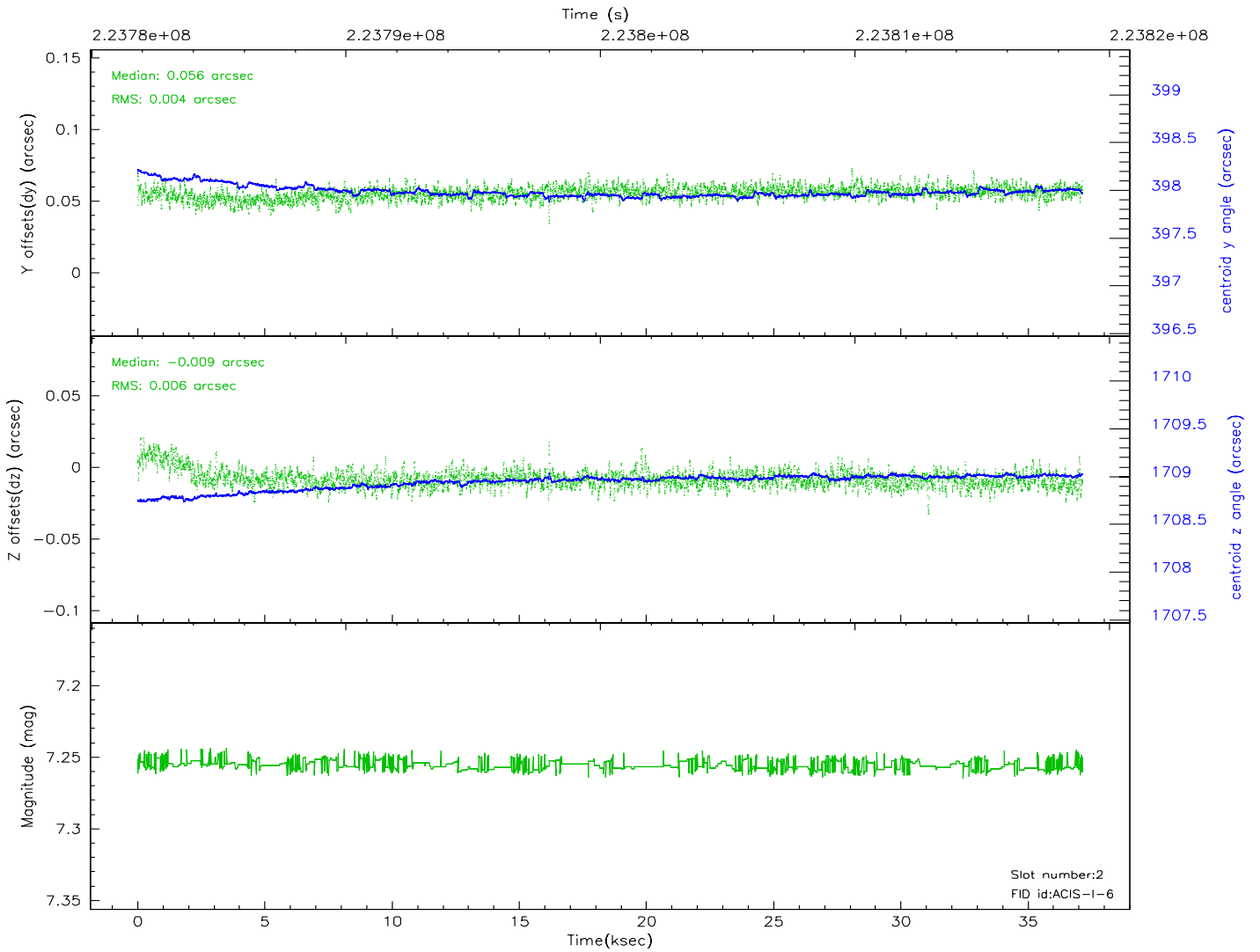
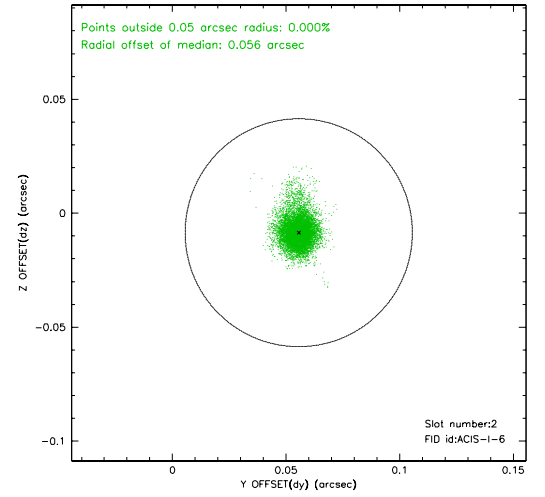
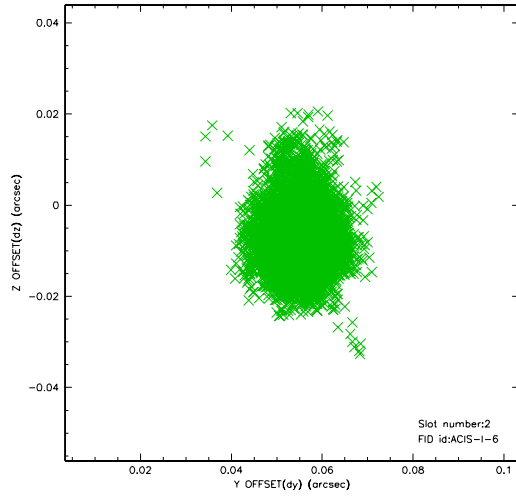
### 2.5.1 Slot 0



## 2.5.2 Slot 1

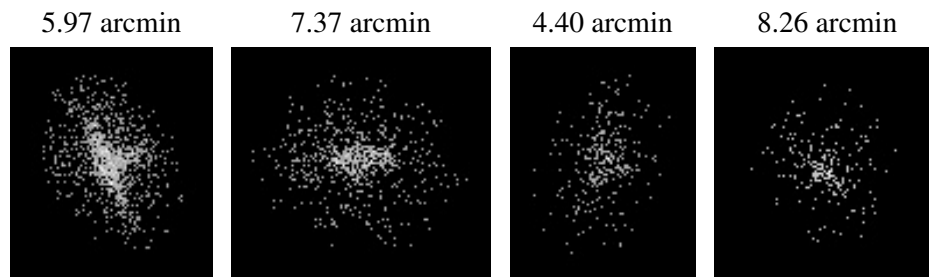


## 2.5.3 Slot 2





### 3 Point Sources



## A Summary

### A.1 Status

V&V Scientist	Jen Lauer
V&V Date (YYYY-MM-DD)	2006.02.22
V&V Edition	1
V&V Disposition and Status	OK
V&V Charge Time	37.14725

### A.2 Comments