

V&V Reference Report

L2 ASCDS Version : 8.4.5

Observation 4998 - L2 Version 3
Chandra X-Ray Center

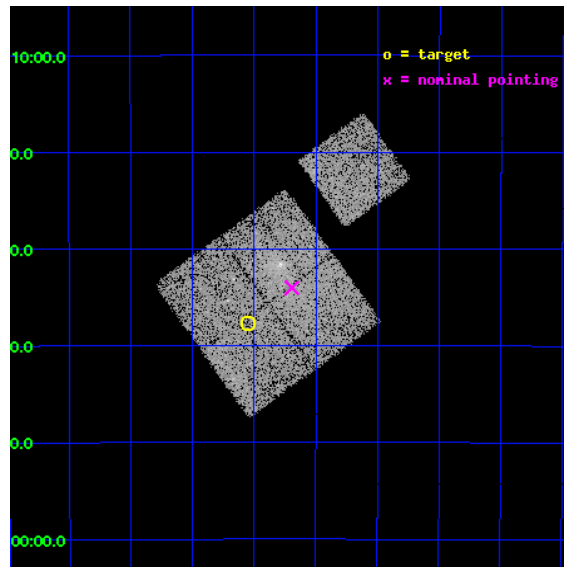
L2 Processing Date : Nov 11 2012

Contents

1	Front	2
2	OBI	3
2.1	OBI	3
2.1.1	Images	3
2.1.2	Bias	3
2.1.3	Parameters	4
2.1.4	Events	4
2.2	Compared Parameters	5
2.3	Aspect	6
2.4	Star Slots	9
2.4.1	Slot 3	9
2.4.2	Slot 4	10
2.4.3	Slot 5	11
2.4.4	Slot 6	12
2.4.5	Slot 7	13
2.5	FID Slots	14
2.5.1	Slot 0	14
2.5.2	Slot 1	15
2.5.3	Slot 2	16
A	Summary	17
A.1	Status	17
A.2	Comments	17

1 Front

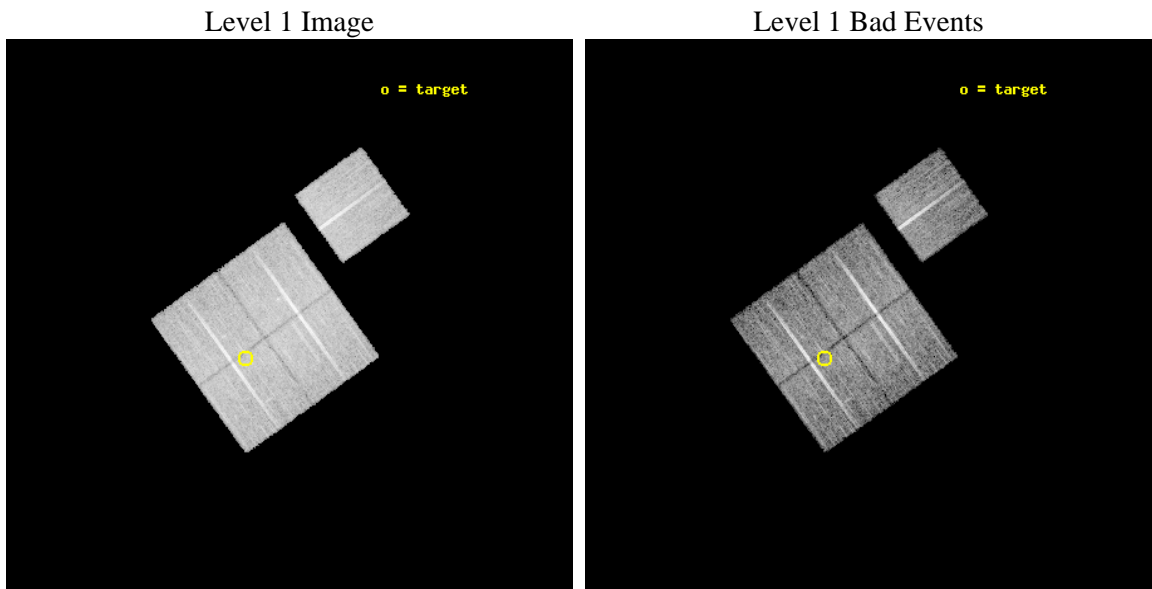
seq_num	800441	Sequence number
obs_id	4998	Observation id
title	Study of Candidate Fossil Groups	Proposal title
observer	Dr. Stephen Murray	Principal investigator
object	NGC4936-offset2	Source name
dtcycle	0	
cycle	P	events from which exps? Prim/Second/Both
ra_targ	196.137917	Observer's specified target RA [deg]
dec_targ	-30.628389	Observer's specified target Dec [deg]
ra_nom	196.04846803497	Nominal RA [deg]
dec_nom	-30.5672087	Nominal Dec [deg]
roll_nom	54.222910735445	Nominal Roll [deg]
revision	3	Processing version of data
ontime	15146.559000611	Sum of GTIs [s]
livetime	14948.658056534	Livetime [s]
ontime0	15146.55897069	Sum of GTIs [s]
ontime1	15146.559000611	Sum of GTIs [s]
ontime2	15143.418020368	Sum of GTIs [s]
ontime3	15146.558980674	Sum of GTIs [s]
ontime6	15146.55897069	Sum of GTIs [s]
l2events	40680	Number of level 2 events



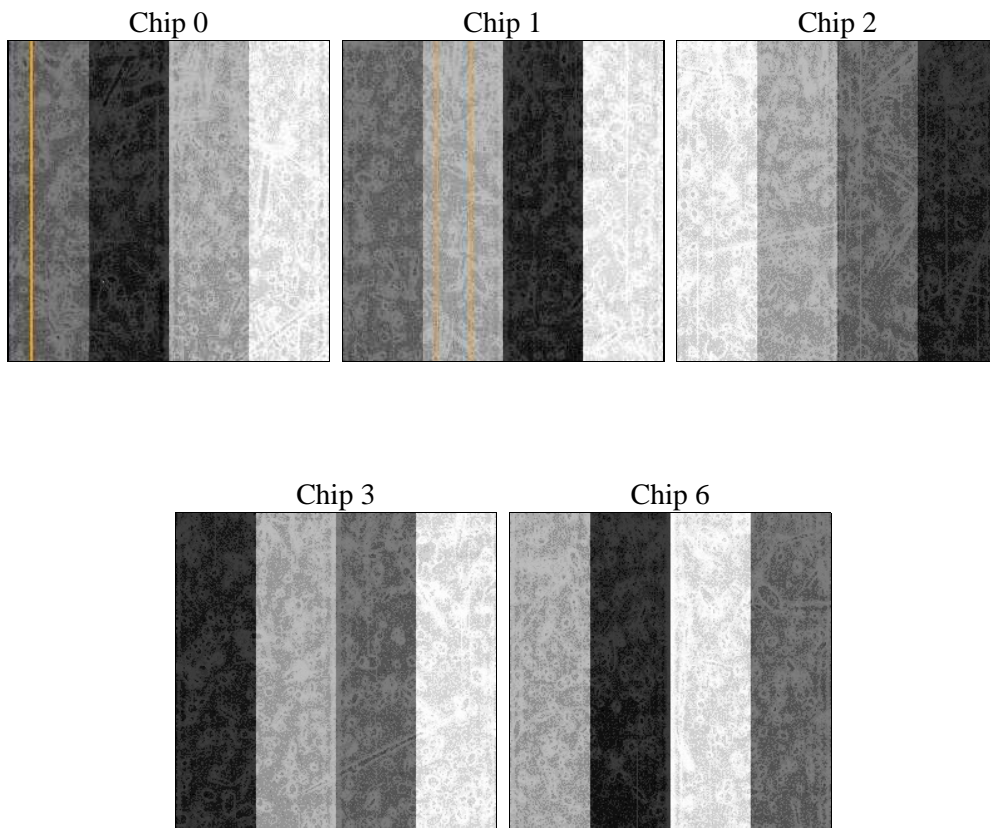
2 OBI

2.1 OBI

2.1.1 Images



2.1.2 Bias



2.1.3 Parameters

obi_num	0	Obi number	sched_exp_time	15000.000000	[s] Scheduled observation exposure time
ascdsver	8.4.5	Processing system revision	ontime	15146.559000611	Sum of GTIs [s]
caldsver	4.5.2	 	ontime0	15146.55897069	Sum of GTIs [s]
date	2012-11-11T23:50:36	Date and time of file creation	ontime1	15146.559000611	Sum of GTIs [s]
revision	3	Processing version of data	ontime2	15143.418020368	Sum of GTIs [s]
			ontime3	15146.558980674	Sum of GTIs [s]
			ontime6	15146.55897069	Sum of GTIs [s]
			l1events	404429	Number of level 1 events

2.1.4 Events

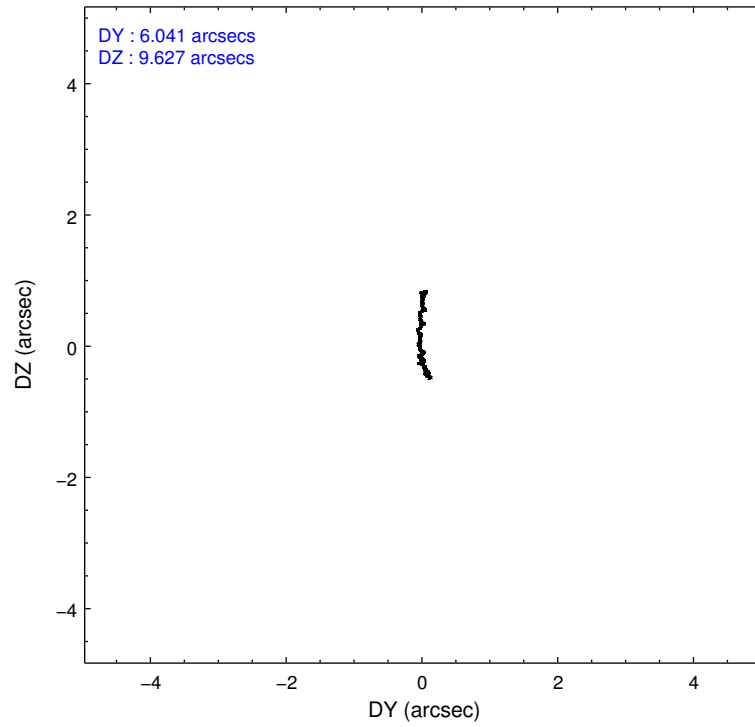
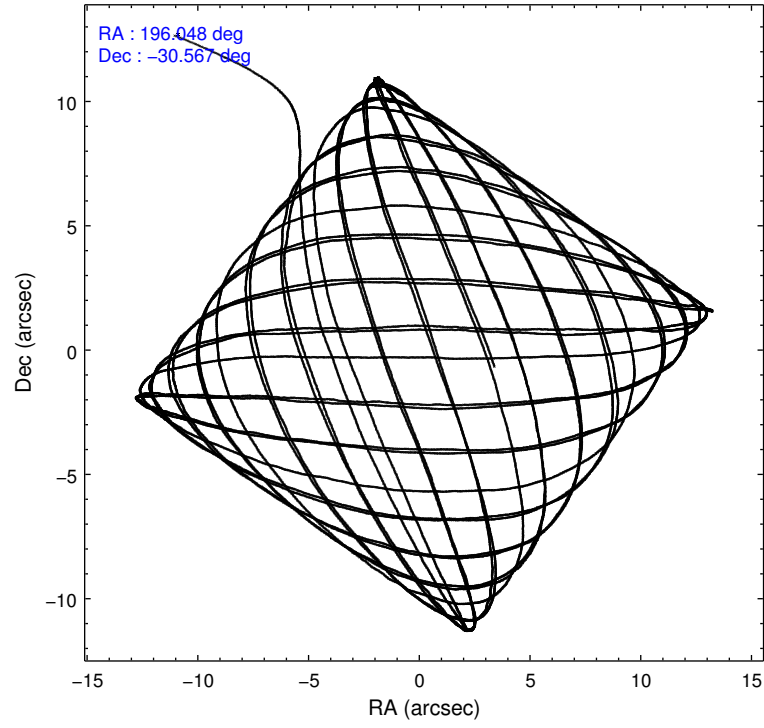
	ccd 0	ccd 1	ccd 2	ccd 3	ccd 6
level 1 events	77386	77554	86346	82613	80530
rejected events	68360	67775	74906	73456	71752
rejected %	88%	87%	86%	88%	89%

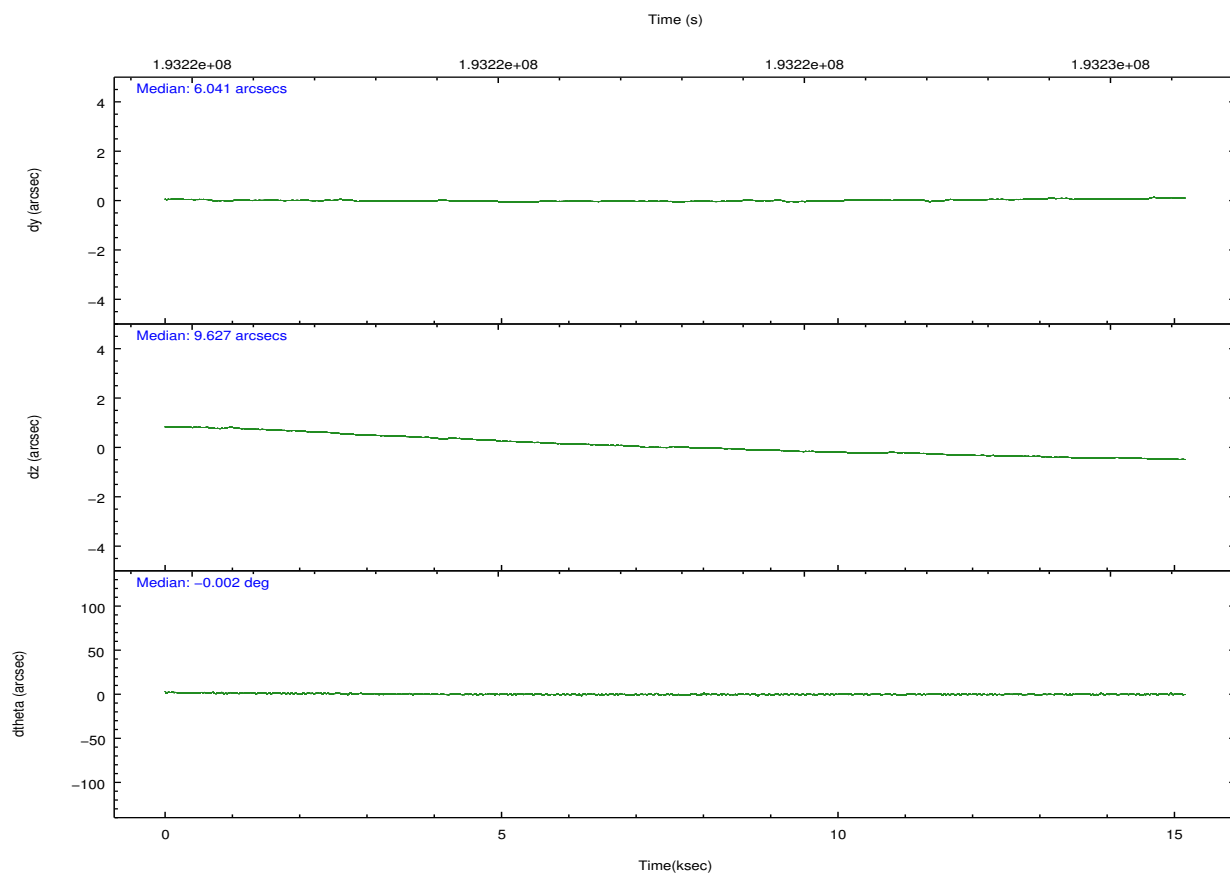
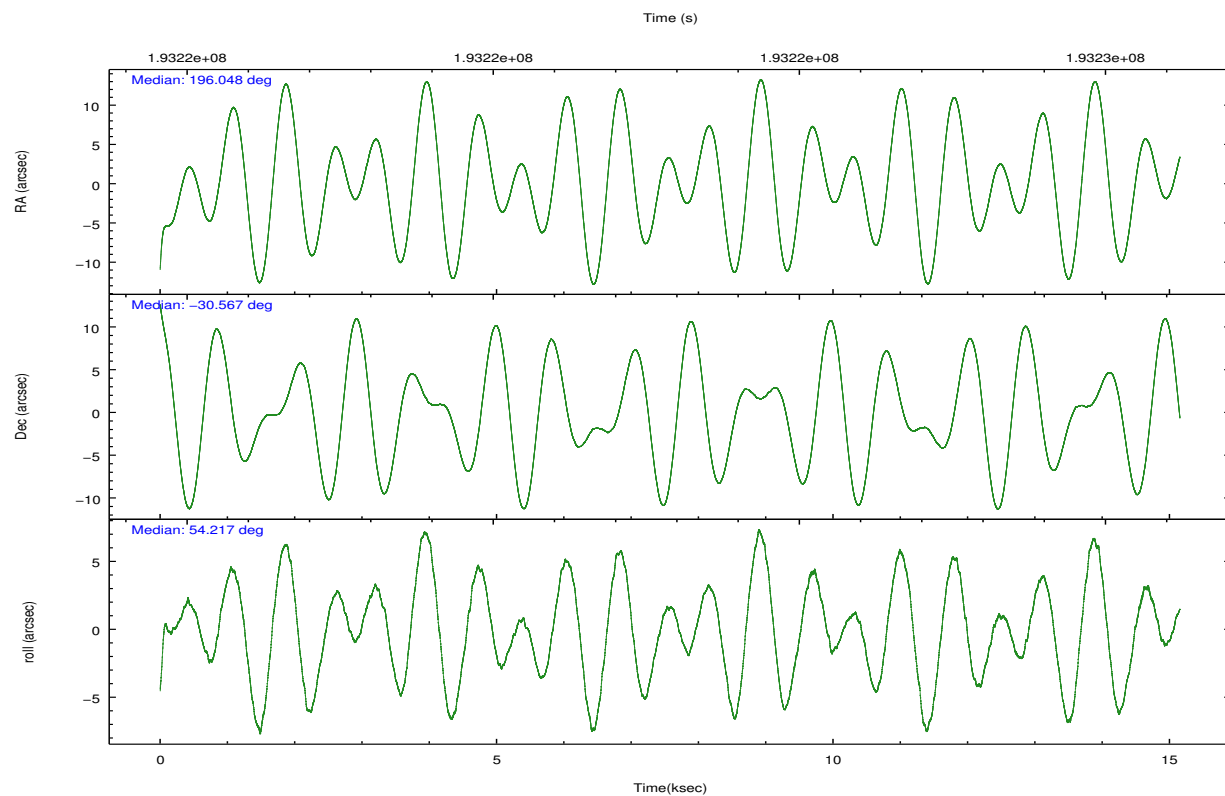
	ccd 0	ccd 1	ccd 2	ccd 3	ccd 6
grade 0 events	3457	3834	5866	4065	3341
	4%	4%	6%	4%	4%
grade 1 events	50	46	34	48	30
	0%	0%	0%	0%	0%
grade 2 events	2041	2010	2130	1686	1765
	2%	2%	2%	2%	2%
grade 3 events	1000	994	937	938	970
	1%	1%	1%	1%	1%
grade 4 events	974	1093	944	929	957
	1%	1%	1%	1%	1%
grade 5 events	2985	3177	2825	3353	3240
	3%	4%	3%	4%	4%
grade 6 events	1582	1878	1589	1560	1777
	2%	2%	1%	1%	2%
grade 7 events	65297	64522	72021	70034	68450
	84%	83%	83%	84%	84%

2.2 Compared Parameters

Parameter	Planned	Actual	Parameter	Planned	Actual
Instrument	ACIS	ACIS	Obspar format version number	7	7
Detector	ACIS-01236	ACIS-01236	Obspar file type	PREDICTED	ACTUAL
Grating	NONE	NONE	Obspar update status	NONE	UPDATED
Data mode	VFAINT	VFAINT	Number of optional ACIS chips dropped	0	0
Observation mode	POINTING	POINTING	On-chip summing requested	N	N
[deg] Pointing RA	196.045407	196.0484680349741	Subarray requested	NONE	NONE
[deg] Pointing Dec	-30.594509	-30.56720870000047	Alternating exposures requested	N	N
[deg] Pointing Roll	54.012671	54.22291073544529	[s] Primary exposure time	0.000000	3.1
[mm] SIM focus pos	-0.782348	-0.7809083437167272			
[mm] SIM defocus	0	0.001439871863259334			
[mm] SIM translation stage pos	-226.592463	-226.5900949765872			
[mm] SIM translation stage offset	-7	-7.002358026342478			
[s] Observation start time (MET)	193215469.184000	193214472.75615			
Observation start date	2004-02-15T06:56:45	2004-02-15T06:41:12			
[s] Observation end time (MET)	193230469.184000	193231927.48191			
Observation end date	2004-02-15T11:06:45	2004-02-15T11:32:07			
Read mode	TIMED	TIMED			

2.3 Aspect



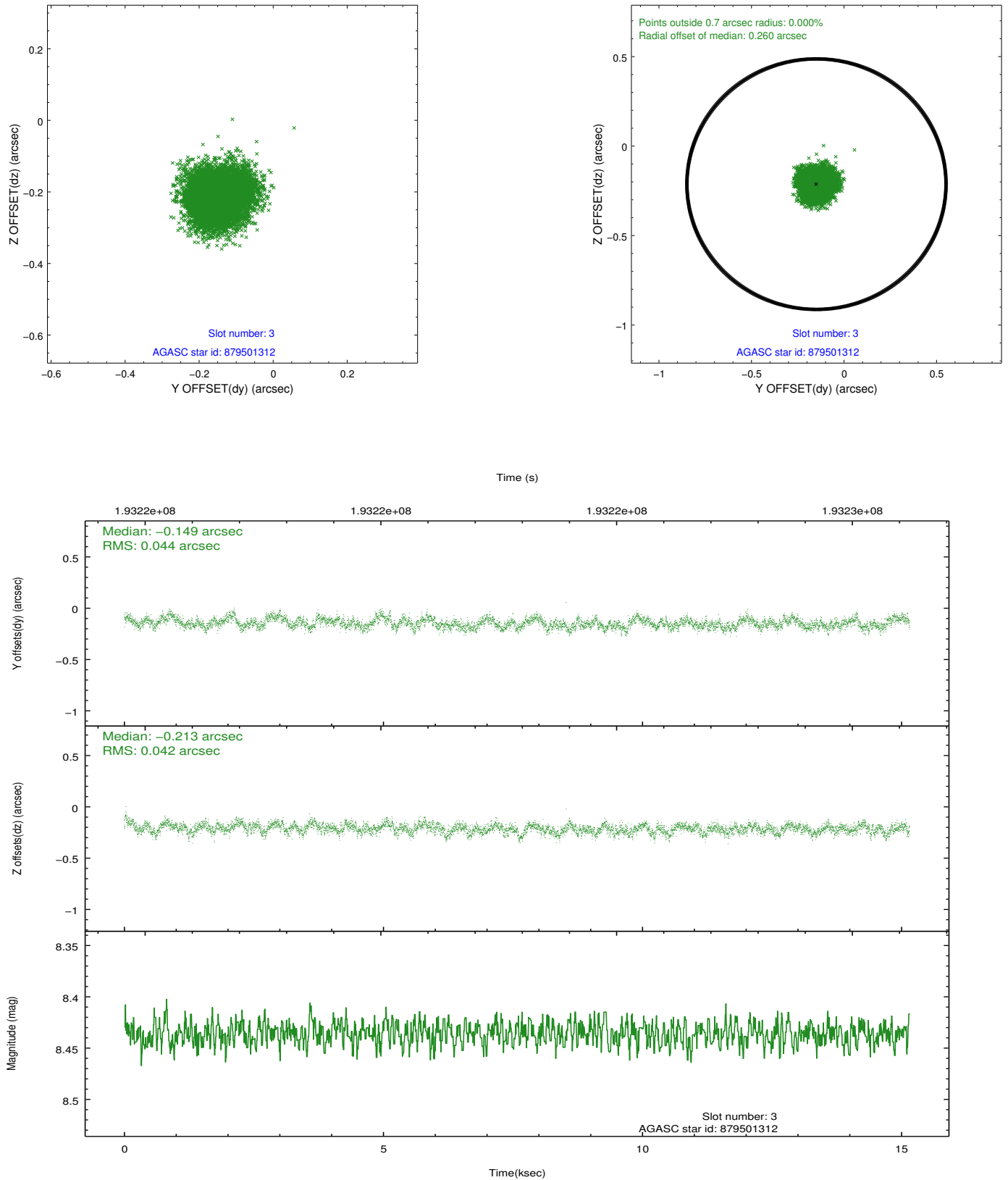


Slot Statistics

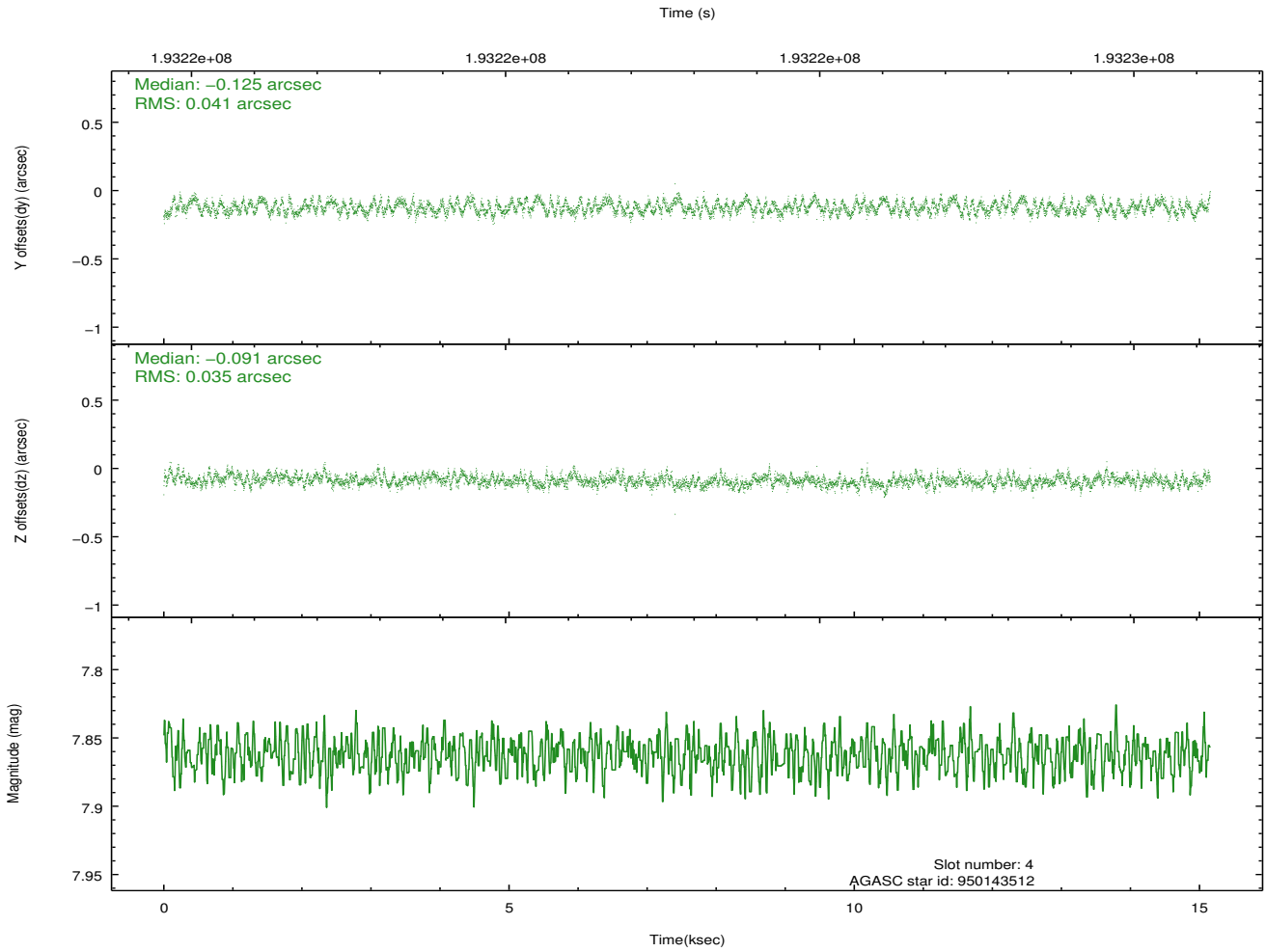
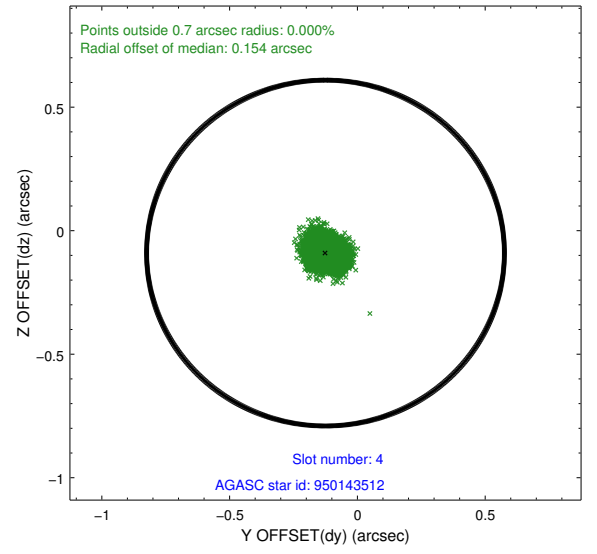
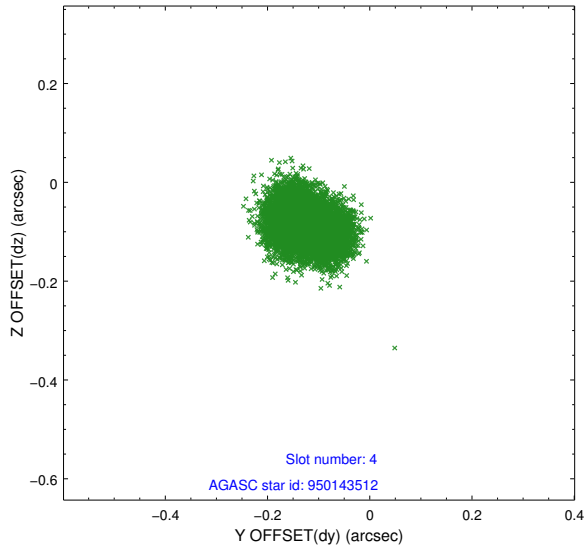
slot	status	id	mag	n_pts	med_dy	med_dz	dr1	dr2	ra	dec	mean_y	mean_z
0	FID	ACIS-I-1	7.23	3696	0.077	-0.022	0.015	0.033	0.000000	0.000000	933.60	-976.94
1	FID	ACIS-I-5	7.22	3697	-0.207	0.086	0.014	0.023	0.000000	0.000000	-1814.62	920.49
2	FID	ACIS-I-6	7.25	3697	0.040	0.009	0.015	0.024	0.000000	0.000000	398.80	1565.25
3	GUIDE	879501312	8.44	7393	-0.149	-0.213	0.065	0.105	195.864202	-29.858892	1809.72	2013.57
4	GUIDE	950143512	7.86	7392	-0.125	-0.091	0.059	0.090	195.697444	-30.338755	108.43	1414.94
5	GUIDE	950144048	9.41	7392	0.125	-0.074	0.077	0.126	195.661768	-30.639985	-832.22	864.07
6	GUIDE	950272152	7.95	7394	-0.125	0.188	0.071	0.118	196.912603	-30.434929	2038.21	-1846.24
7	GUIDE	950272912	9.88	7390	0.271	0.190	0.105	0.169	195.859290	-31.162971	-1992.52	-739.29

2.4 Star Slots

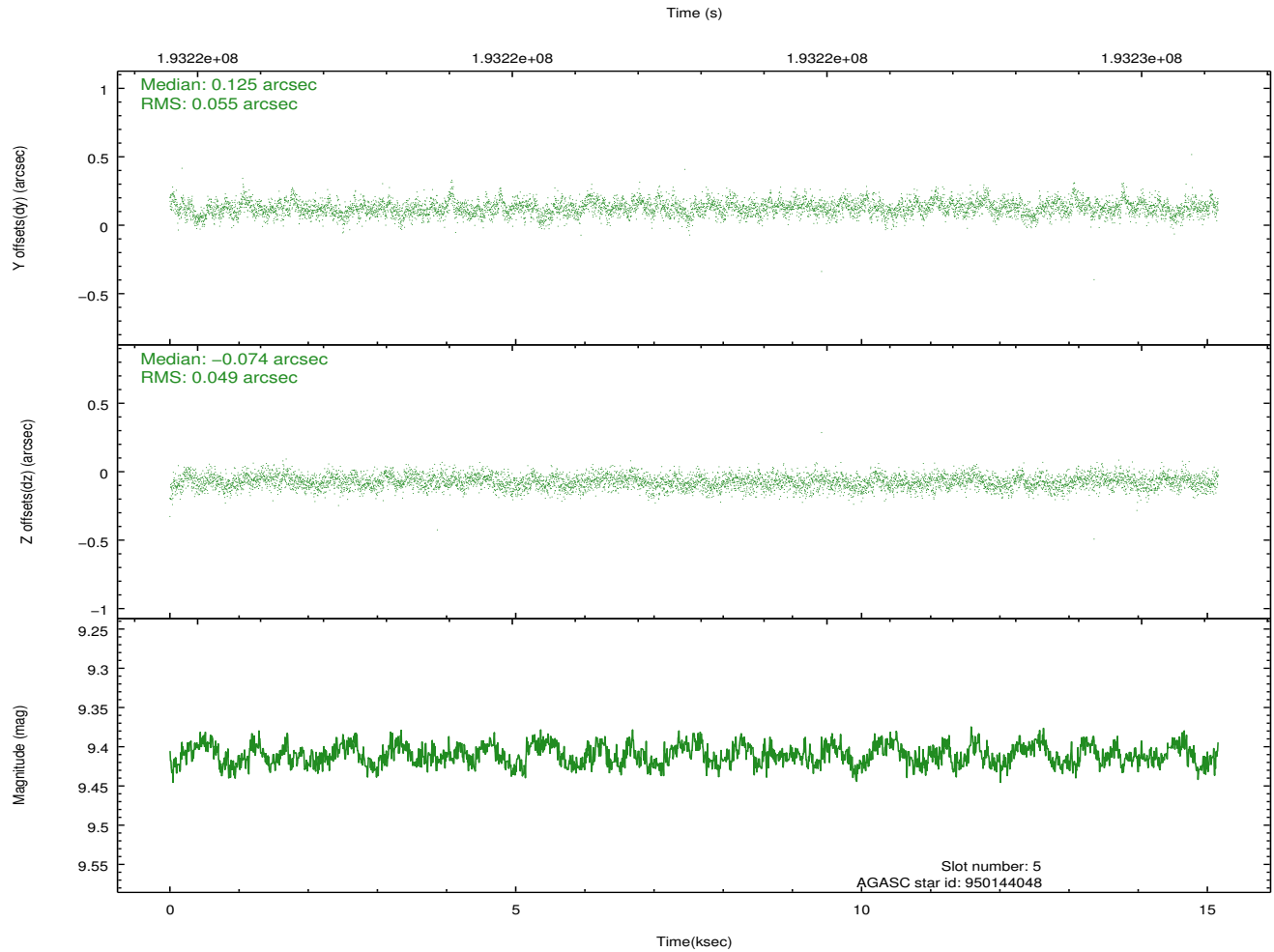
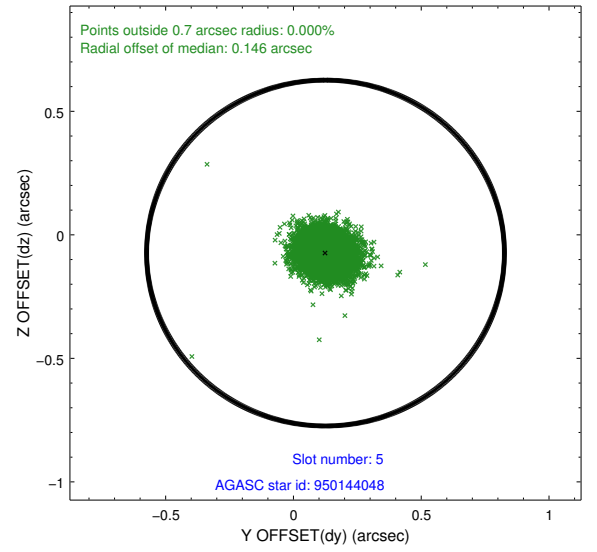
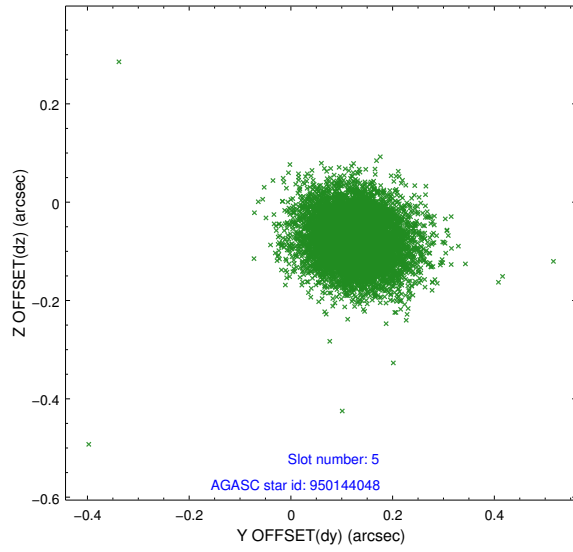
2.4.1 Slot 3



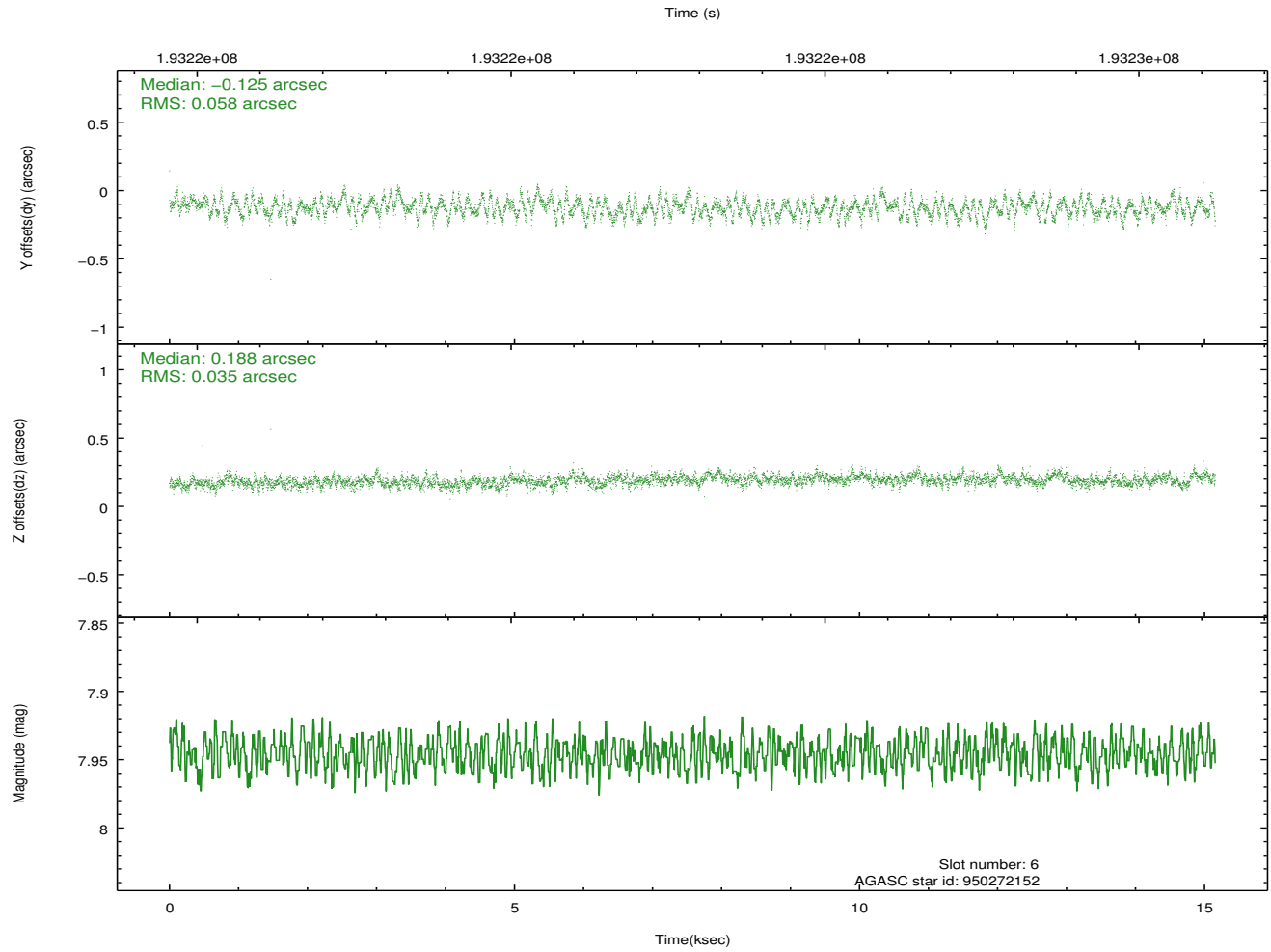
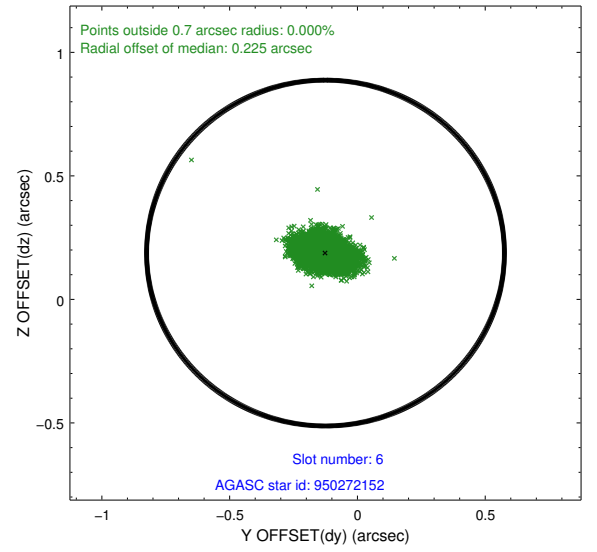
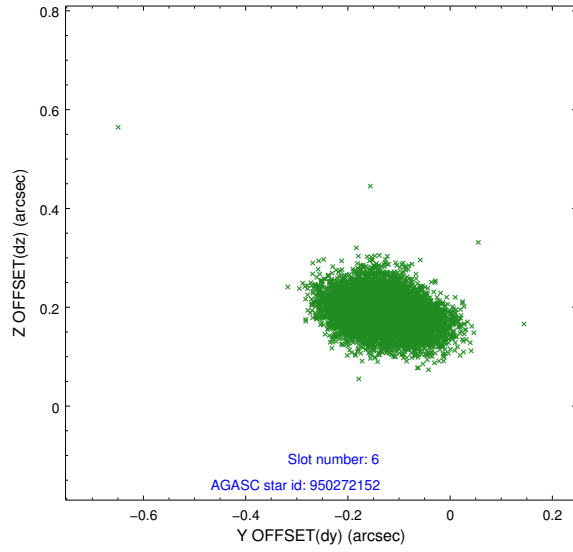
2.4.2 Slot 4



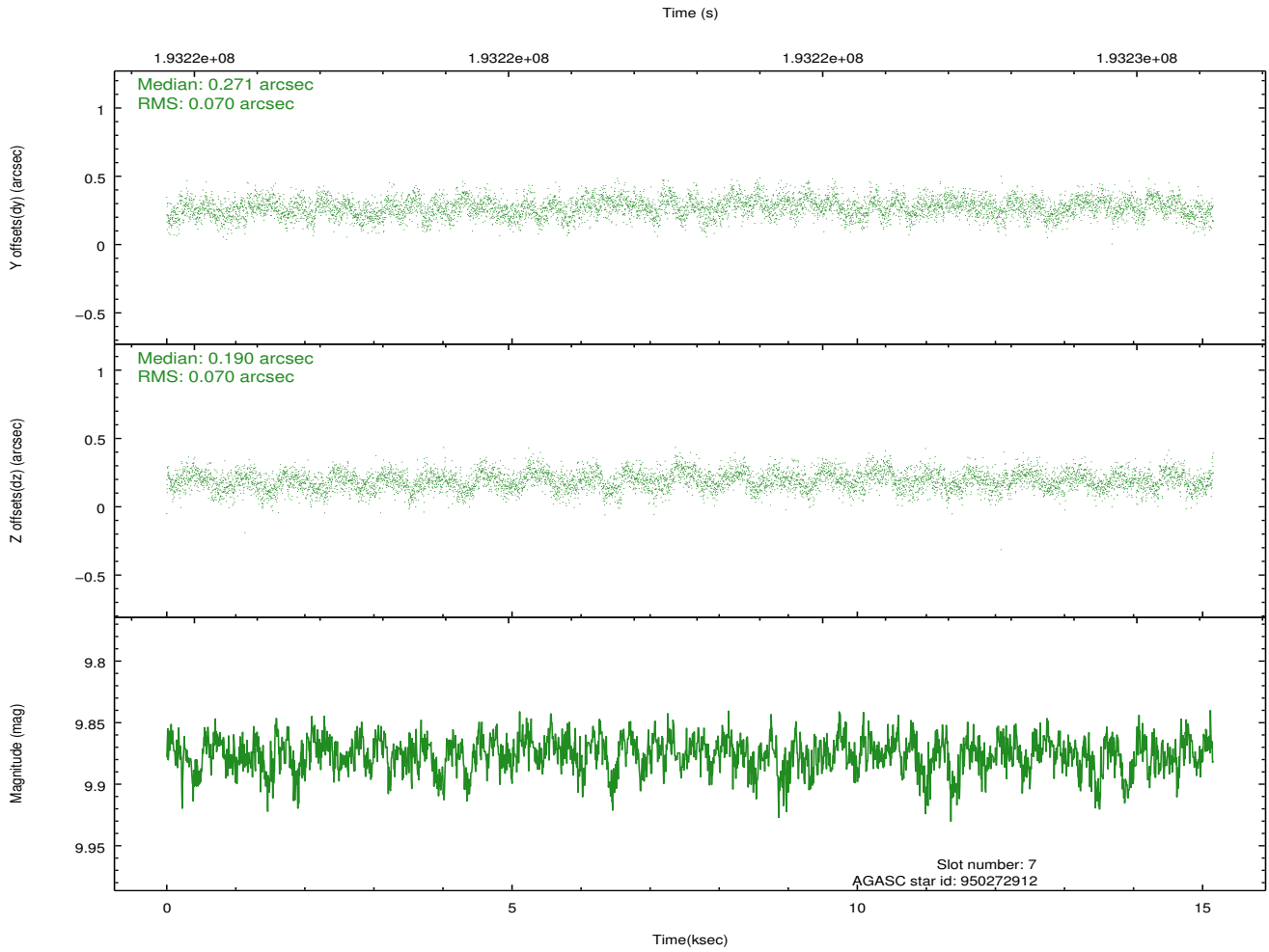
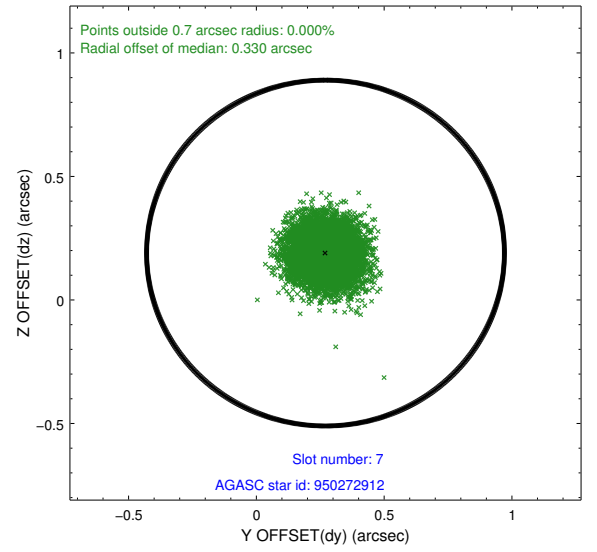
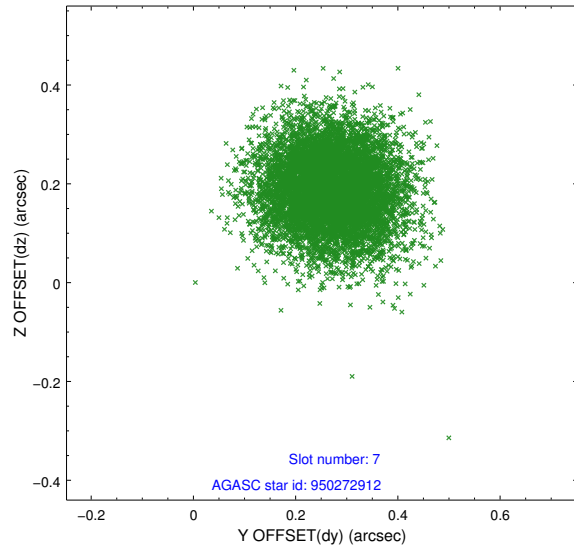
2.4.3 Slot 5



2.4.4 Slot 6

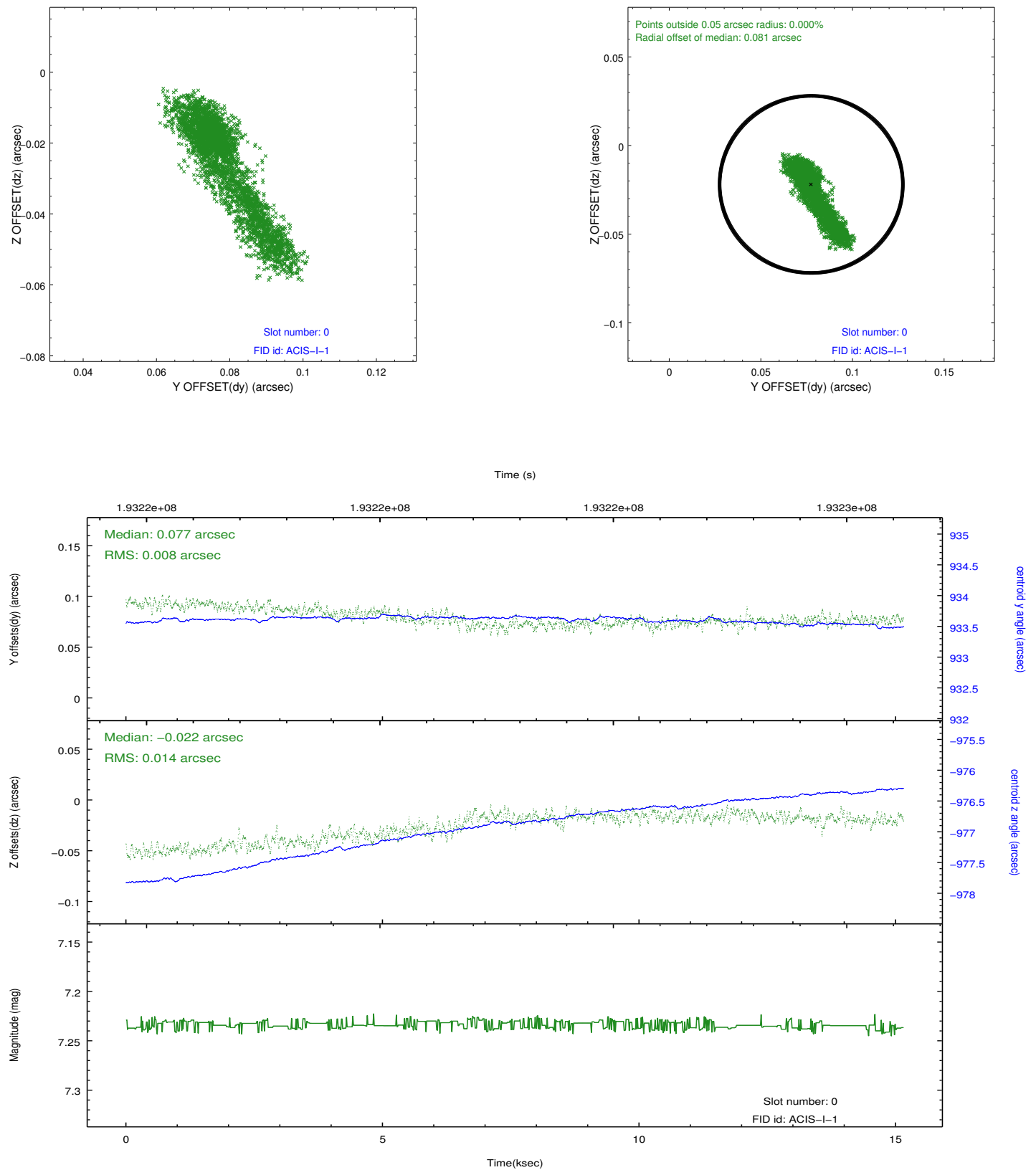


2.4.5 Slot 7

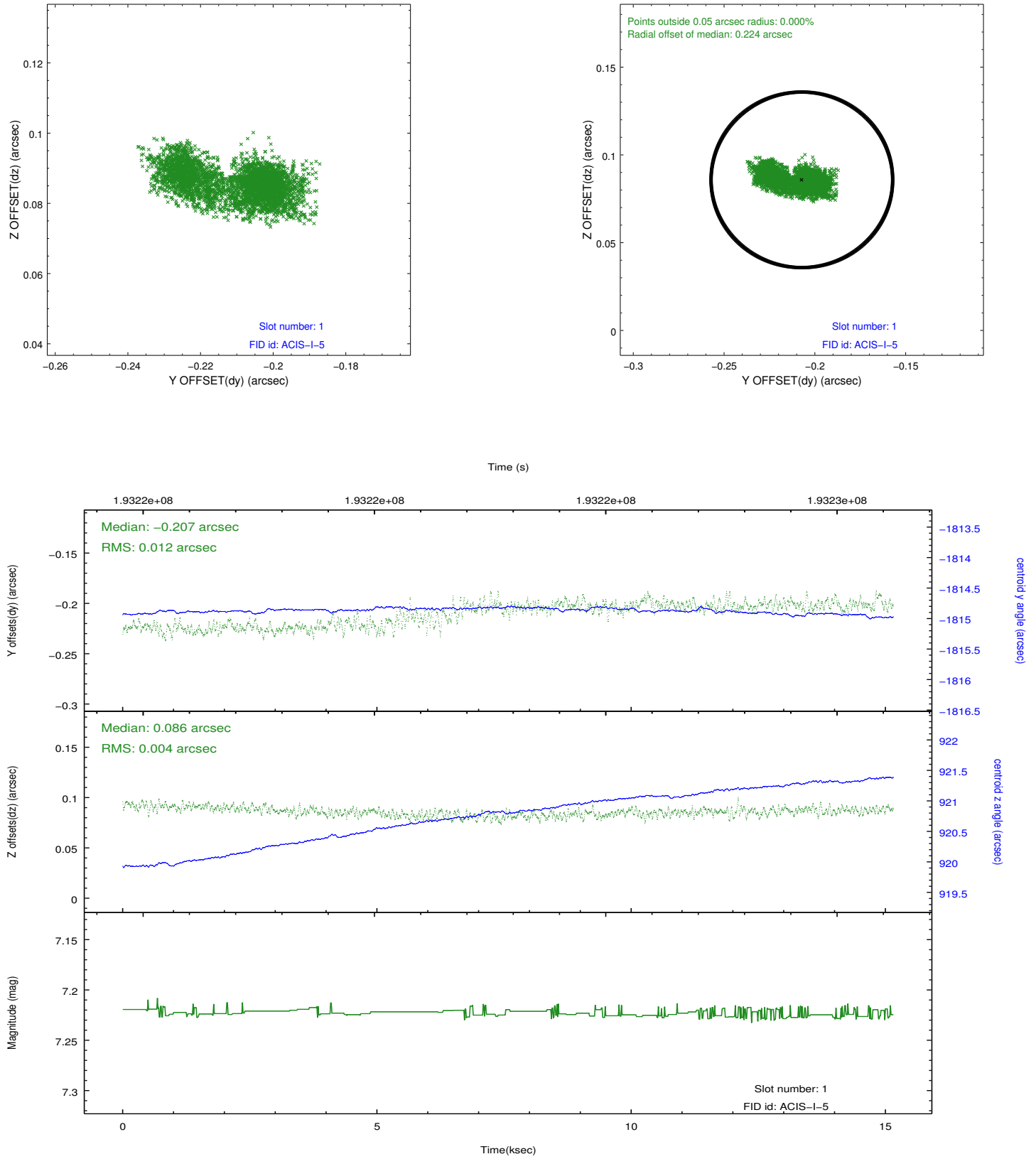


2.5 FID Slots

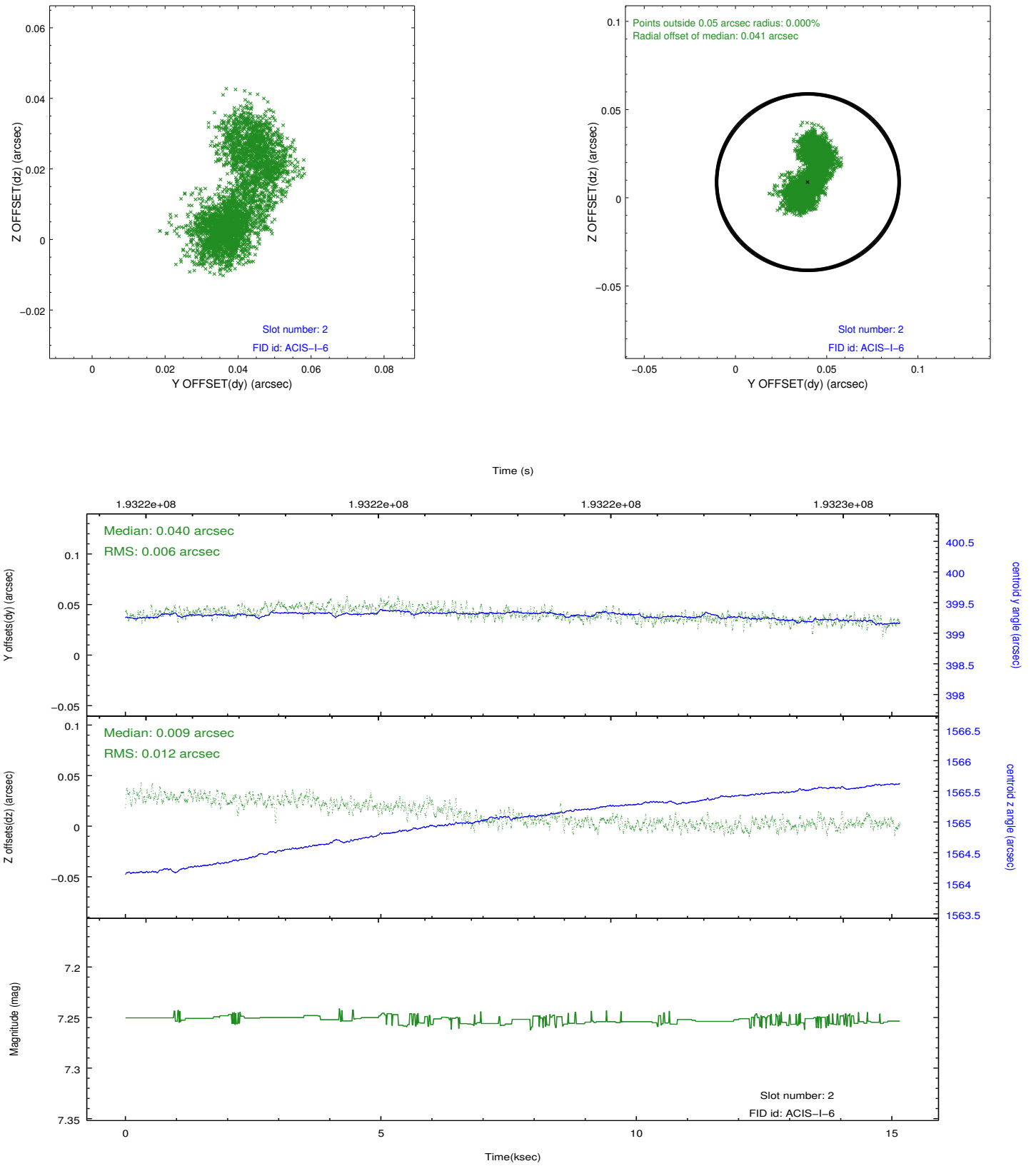
2.5.1 Slot 0



2.5.2 Slot 1



2.5.3 Slot 2



A Summary

A.1 Status

V&V Scientist	Jen Lauer
V&V Date (YYYY-MM-DD)	2012.12.11
V&V Edition	1
V&V Disposition and Status	OK
V&V Charge Time	15.146

A.2 Comments