

# V&V Reference Report

## L2 ASCDS Version : 7.6.7.2

Observation 4990 - L2 Version 001  
Chandra X-Ray Center

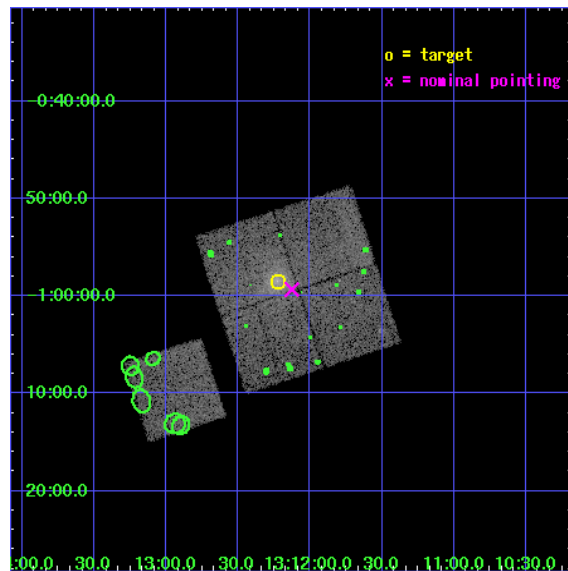
L2 Processing Date : Apr 24 2006

## Contents

<b>1</b>	<b>Front</b>	<b>2</b>
<b>2</b>	<b>OBI</b>	<b>3</b>
2.1	OBI . . . . .	3
2.1.1	Images . . . . .	3
2.1.2	Bias . . . . .	3
2.1.3	Parameters . . . . .	4
2.1.4	Events . . . . .	4
2.2	Compared Parameters . . . . .	5
2.3	Aspect . . . . .	6
2.4	Star Slots . . . . .	9
2.4.1	Slot 3 . . . . .	9
2.4.2	Slot 4 . . . . .	10
2.4.3	Slot 5 . . . . .	11
2.4.4	Slot 6 . . . . .	12
2.4.5	Slot 7 . . . . .	13
2.5	FID Slots . . . . .	14
2.5.1	Slot 0 . . . . .	14
2.5.2	Slot 1 . . . . .	15
2.5.3	Slot 2 . . . . .	16
<b>3</b>	<b>Point Sources</b>	<b>17</b>
<b>A</b>	<b>Summary</b>	<b>18</b>
A.1	Status . . . . .	18
A.2	Comments . . . . .	18

# 1 Front

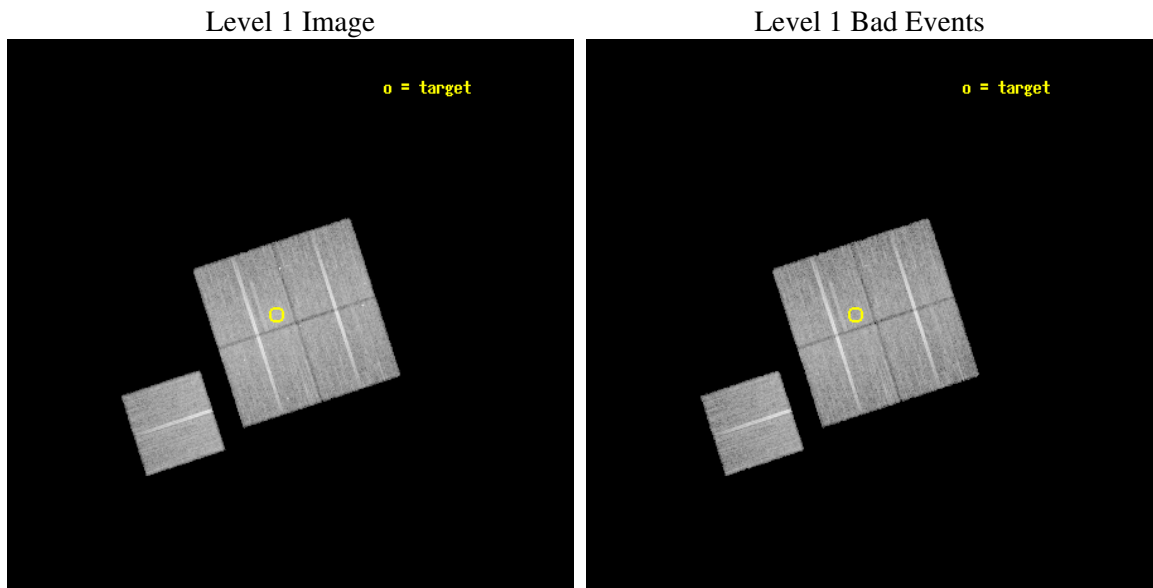
seq_num	800433
obs_id	4990
title	X-ray Properties of a Mass-Selected Group Catalogue: A Pilot Study
observer	Dr Richard Bower
object	2dF Selected Group
dtcycle	0
cycle	P
ra_targ	198.055833
dec_targ	-0.974806
ra_nom	198.03173414895
dec_nom	-0.98890115534732
roll_nom	251.96652462656
revision	2
ontime	21768.158968002
livetime	21483.741945599
ontime0	21771.29995814
ontime1	21761.877117127
ontime2	21771.29995814
ontime3	21768.158968002
ontime6	21771.29995814
l2events	63157



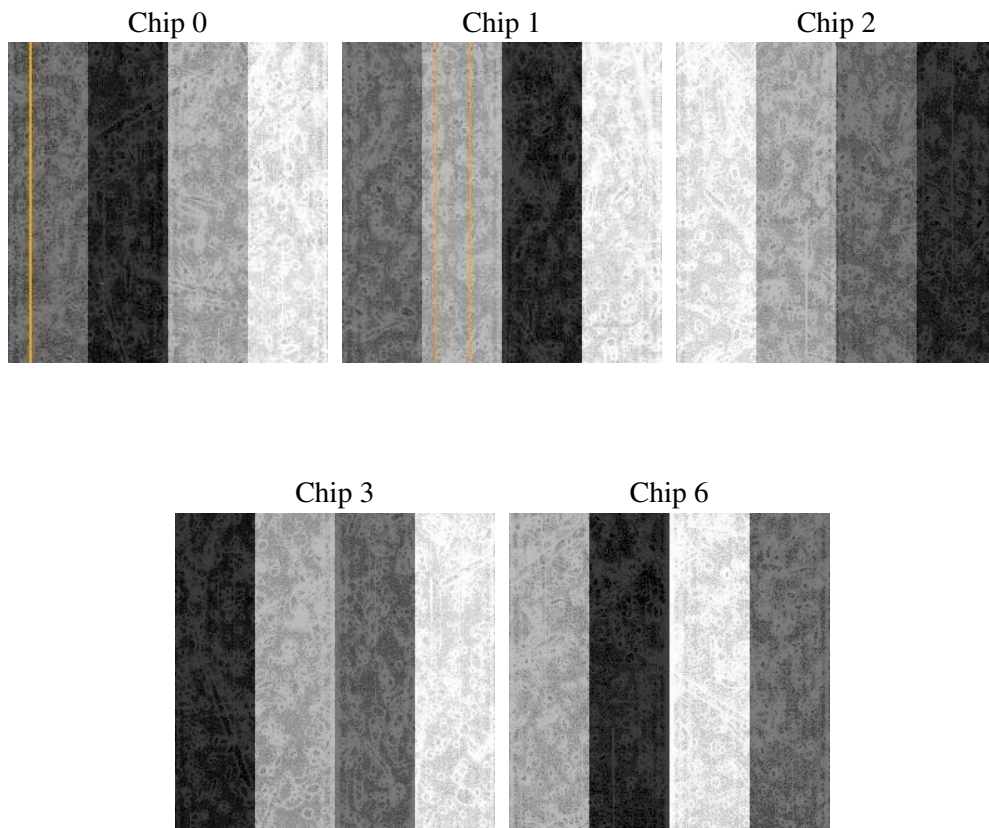
## 2 OBI

### 2.1 OBI

#### 2.1.1 Images



#### 2.1.2 Bias



### 2.1.3 Parameters

obi_num	0
ascdsver	7.6.7.2
caldbver	3.2.1
date	2006-04-24T22:52:08
revision	2

sched_exp_time	22000.000000
ontime	21773.423278302
ontime0	21776.56426844
ontime1	21767.141427428
ontime2	21776.56426844
ontime3	21773.423278302
ontime6	21776.564238548
l1events	677240

### 2.1.4 Events

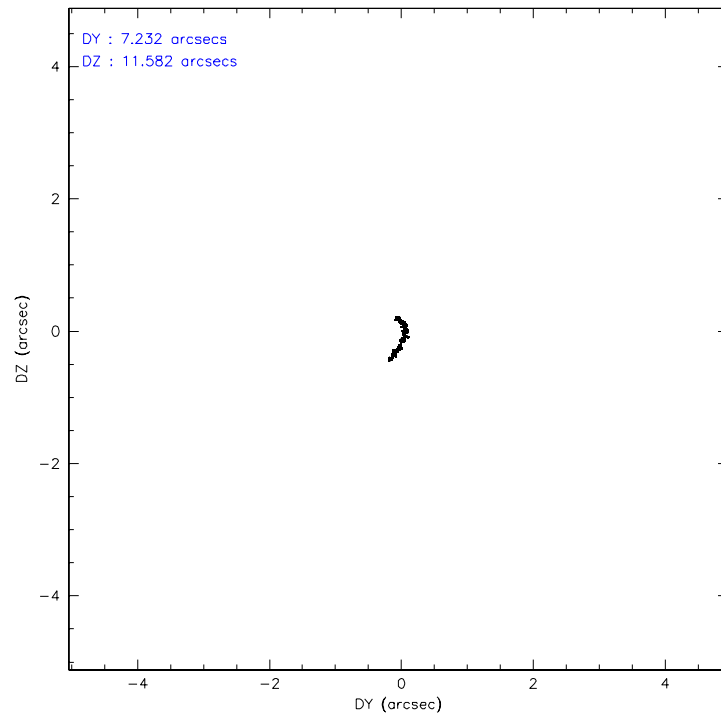
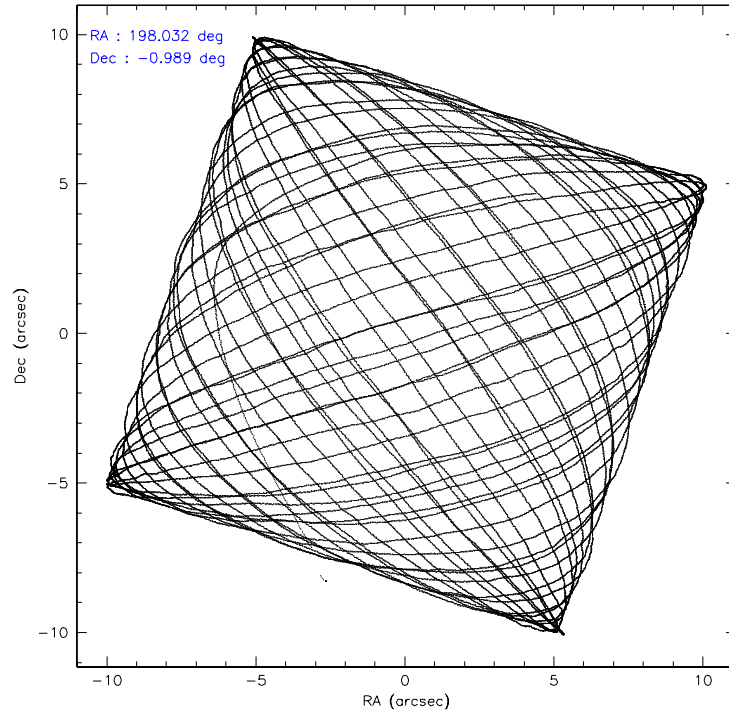
	ccd 0	ccd 1	ccd 2	ccd 3	ccd 6
level 1 events	127740	130283	140761	141207	137249
rejected events	113653	114305	126467	124178	123496
rejected %	88%	87%	89%	87%	89%

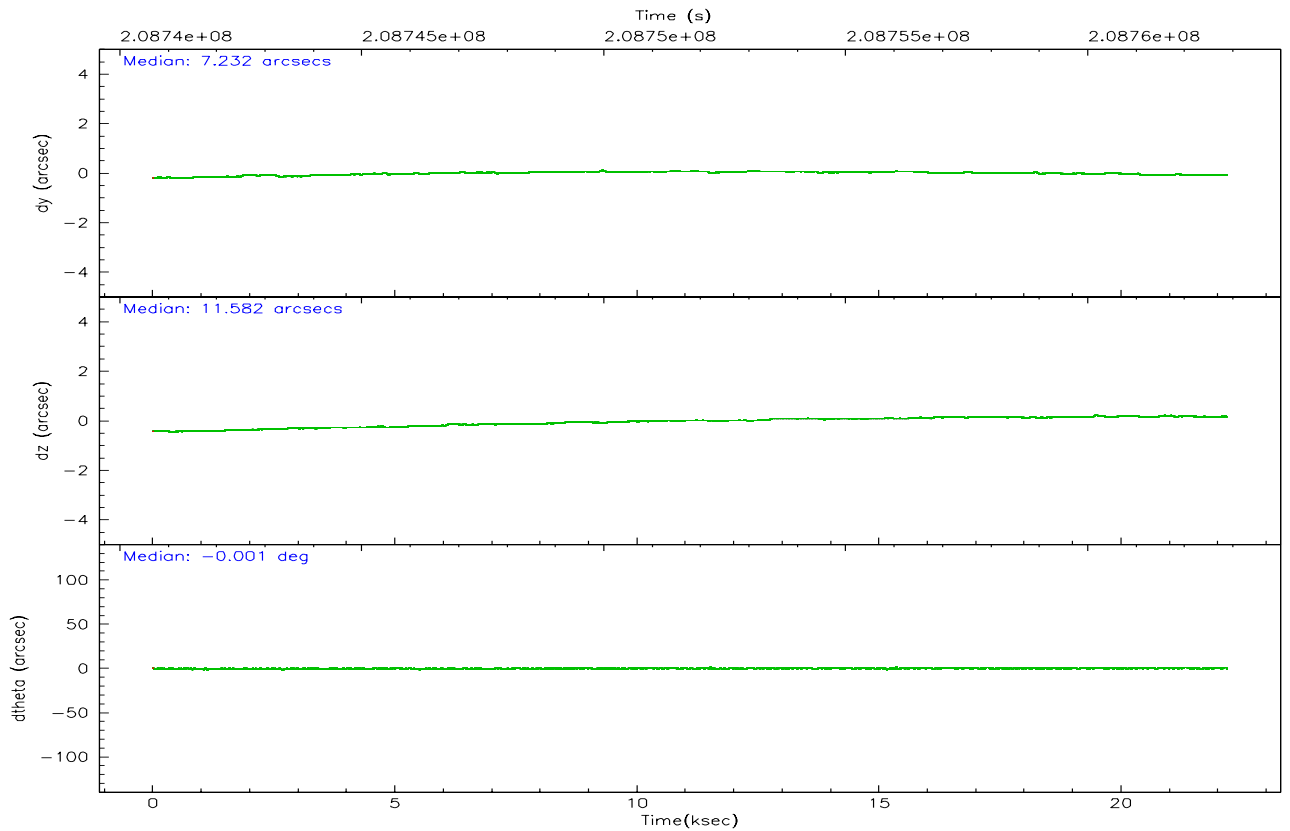
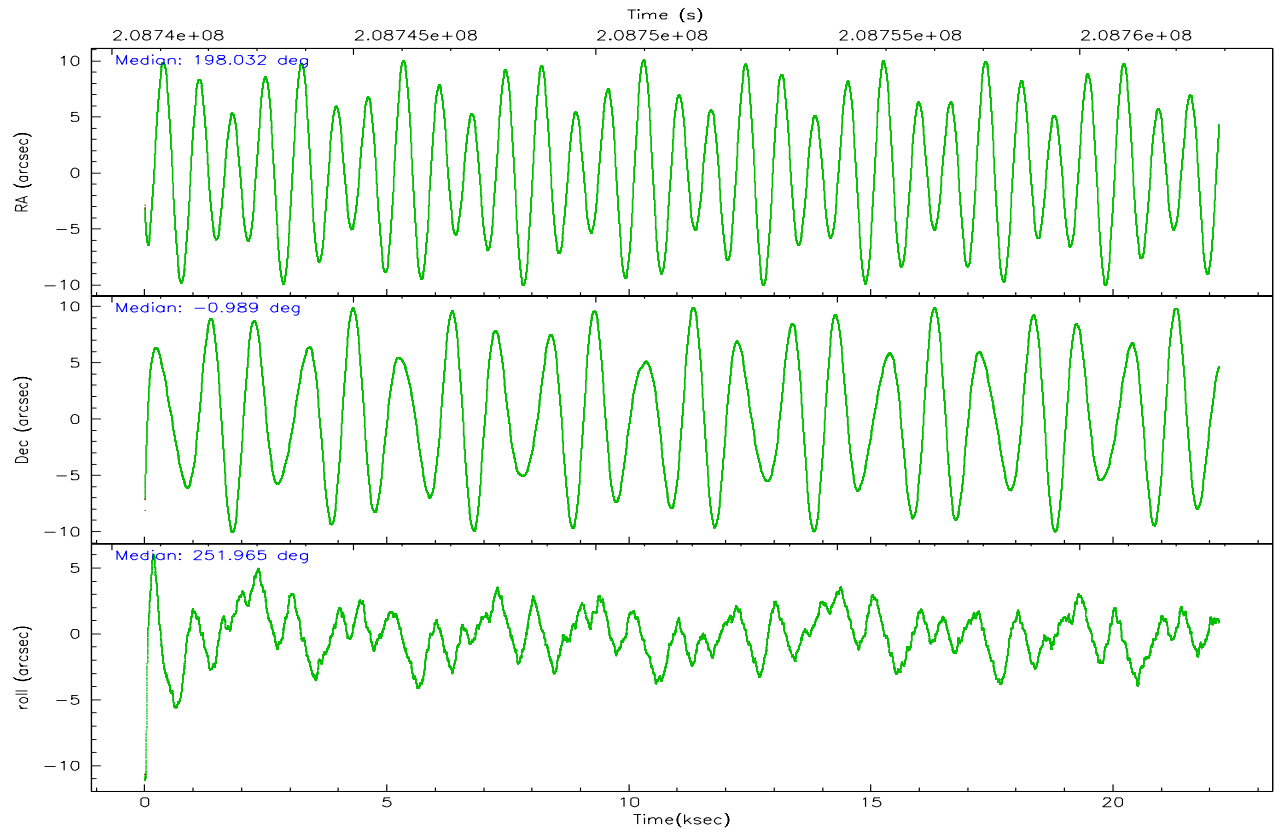
	ccd 0	ccd 1	ccd 2	ccd 3	ccd 6
grade 0 events	5260	6061	5727	8184	4712
	4%	4%	4%	5%	3%
grade 1 events	58	63	67	91	51
	0%	0%	0%	0%	0%
grade 2 events	3284	3419	3089	3156	2902
	2%	2%	2%	2%	2%
grade 3 events	1577	1746	1487	1549	1656
	1%	1%	1%	1%	1%
grade 4 events	1446	1722	1533	1492	1555
	1%	1%	1%	1%	1%
grade 5 events	4749	5079	4494	5322	5300
	3%	3%	3%	3%	3%
grade 6 events	2524	3031	2459	2652	2930
	1%	2%	1%	1%	2%
grade 7 events	108842	109162	121905	118761	118143
	85%	83%	86%	84%	86%

## 2.2 Compared Parameters

Parameter	Planned	Actual	Parameter	Planned	Actual
Instrument	ACIS	ACIS	Obspar format version number	6	6
Detector	ACIS-01236	ACIS-01236	Obspar file type	PREDICTED	ACTUAL
Grating	NONE	NONE	Obspar update status	NONE	UPDATED
Data mode	VFAINT	VFAINT	On-chip summing requested	N	N
Observation mode	POINTING	POINTING	Subarray requested	NONE	NONE
Pointing RA	198.025948	198.0317341489509	Alternating exposures requested	N	N
Pointing Dec	-0.962153	-0.9889011553473206	Primary exposure time	0.000000	3.1
Pointing Roll	251.757754	251.9665246265552			
SIM focus pos (mm)	-0.782348	-0.7809083437167272			
SIM defocus (mm)	0	0.001439871863259334			
SIM translation stage pos (mm)	-233.592463	-233.5874344608287			
SIM translation stage offset (mm)	0	-0.005018542100998502			
Observation start time	208740884.184000	208739625.17885			
Observation start date	2004-08-12T23:33:40	2004-08-12T23:13:45			
Observation end time	208762884.184000	208763726.51742			
Observation end date	2004-08-13T05:40:20	2004-08-13T05:55:26			
Read mode	TIMED	TIMED			

## 2.3 Aspect





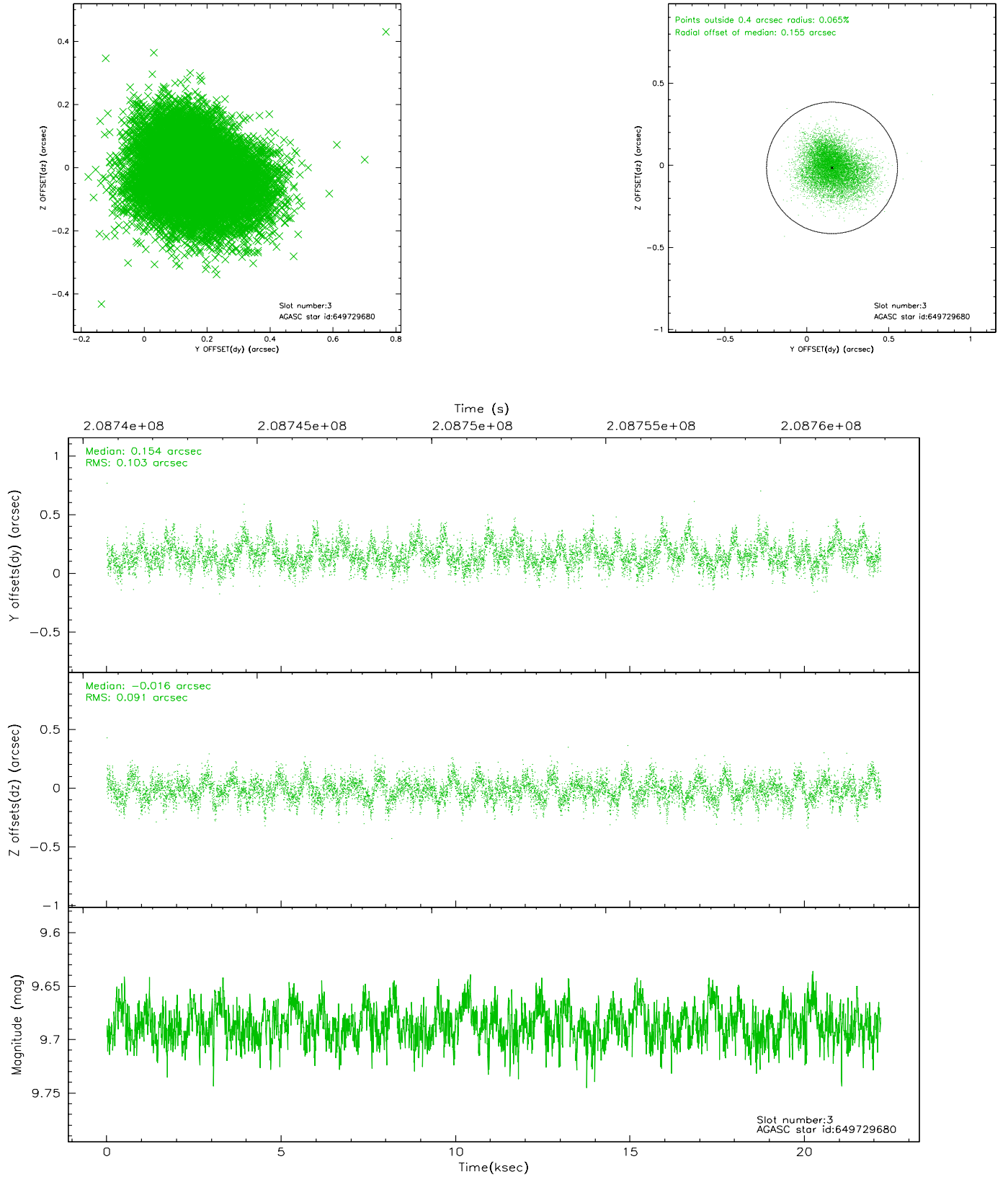
### Slot Statistics

slot	status	id	mag	n_pts	med_dy	med_dz	dr1	dr2	ra	dec	mean_y	mean_z
0	FID	ACIS-I-1	7.24	5413	0.022	0.011	0.007	0.012	0.000000	0.000000	932.46	-835.06
1	FID	ACIS-I-5	7.23	5413	-0.133	0.052	0.007	0.012	0.000000	0.000000	-1815.68	1062.46
2	FID	ACIS-I-6	7.25	5412	0.020	0.009	0.008	0.014	0.000000	0.000000	397.89	1707.04
3	GUIDE	649729680	9.69	10816	0.154	-0.016	0.147	0.236	197.477731	-1.403690	2128.31	-1375.91
4	GUIDE	649855112	8.13	10822	-0.197	-0.051	0.065	0.104	197.679794	-0.418807	-1466.95	-1795.82
5	GUIDE	649856976	9.84	10821	0.131	0.160	0.100	0.161	197.988518	-1.476151	1800.25	451.60
6	GUIDE	649858864	9.64	10815	-0.008	0.005	0.115	0.185	197.684428	-0.695156	-527.13	-1468.78
7	GUIDE	649860032	8.92	10815	-0.084	-0.104	0.109	0.170	197.517008	-0.616758	-606.69	-2129.45

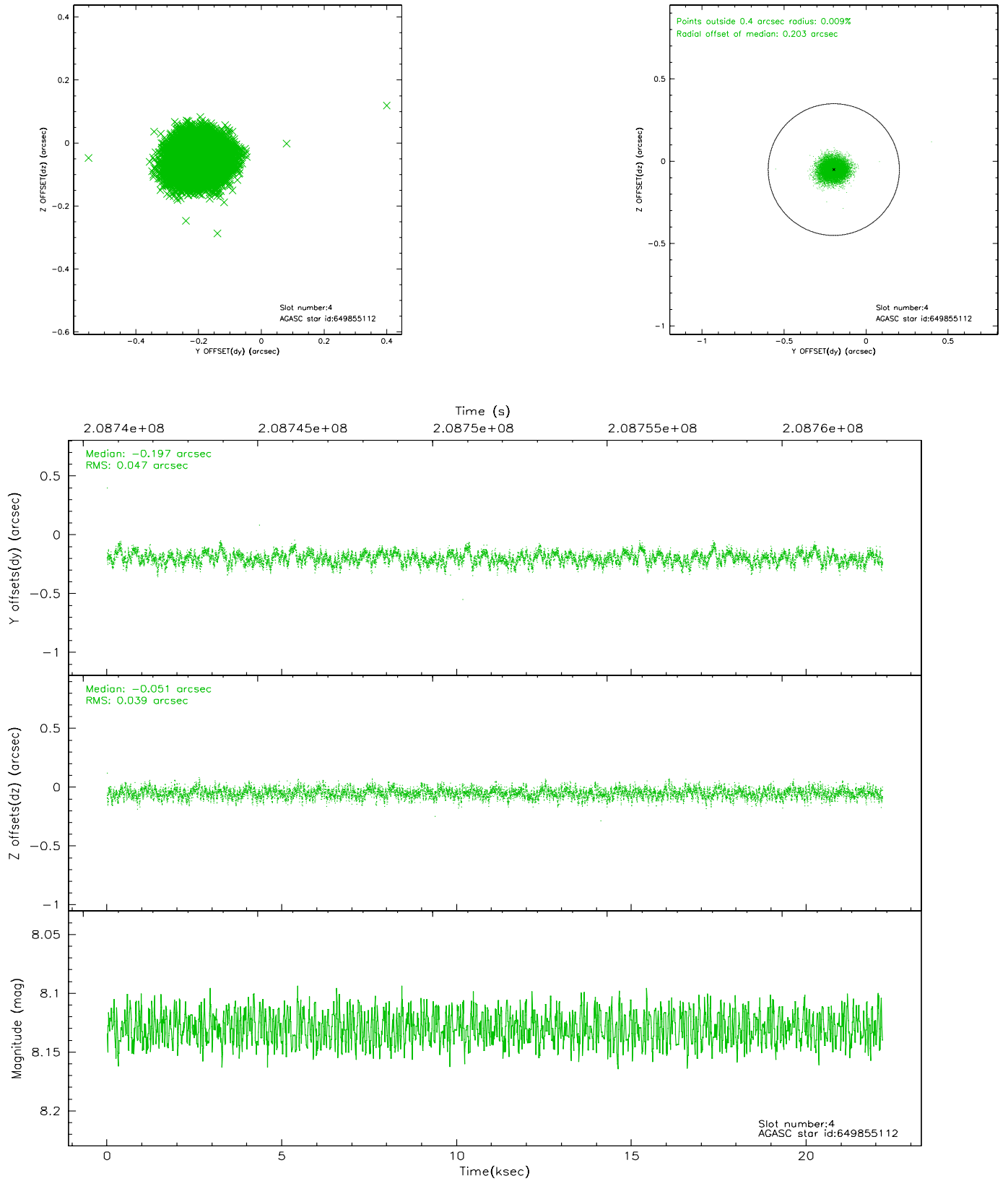


## 2.4 Star Slots

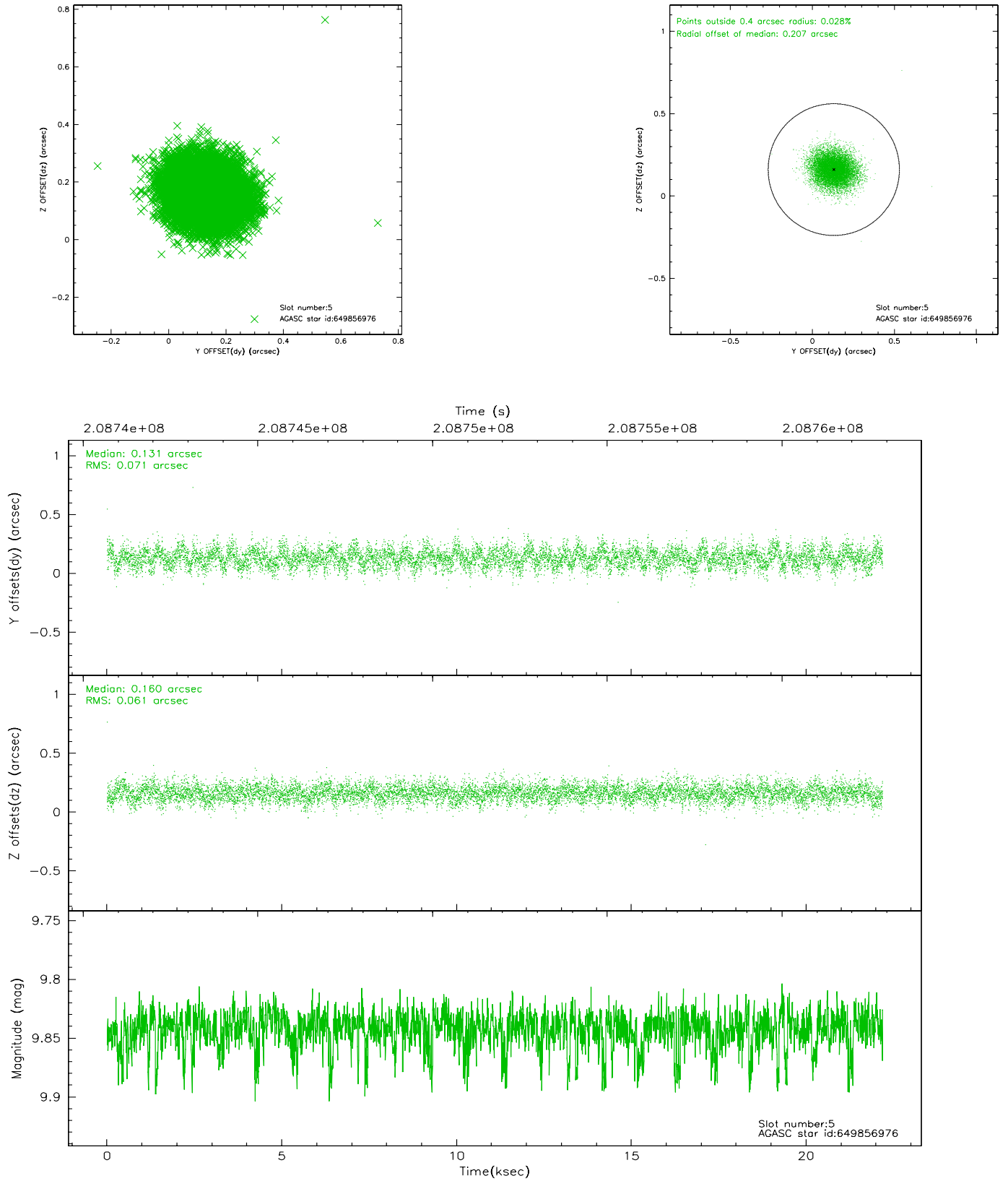
### 2.4.1 Slot 3



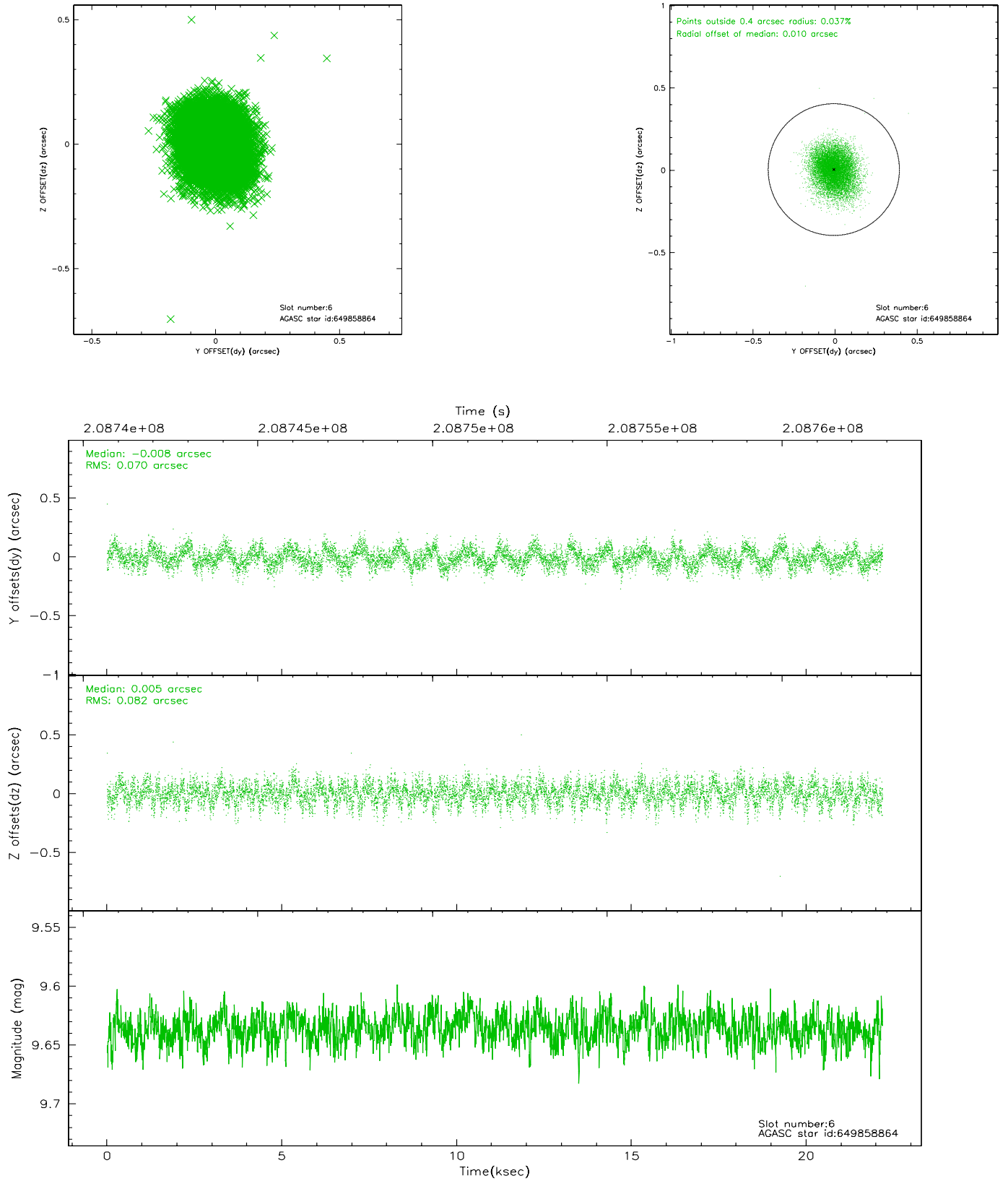
## 2.4.2 Slot 4



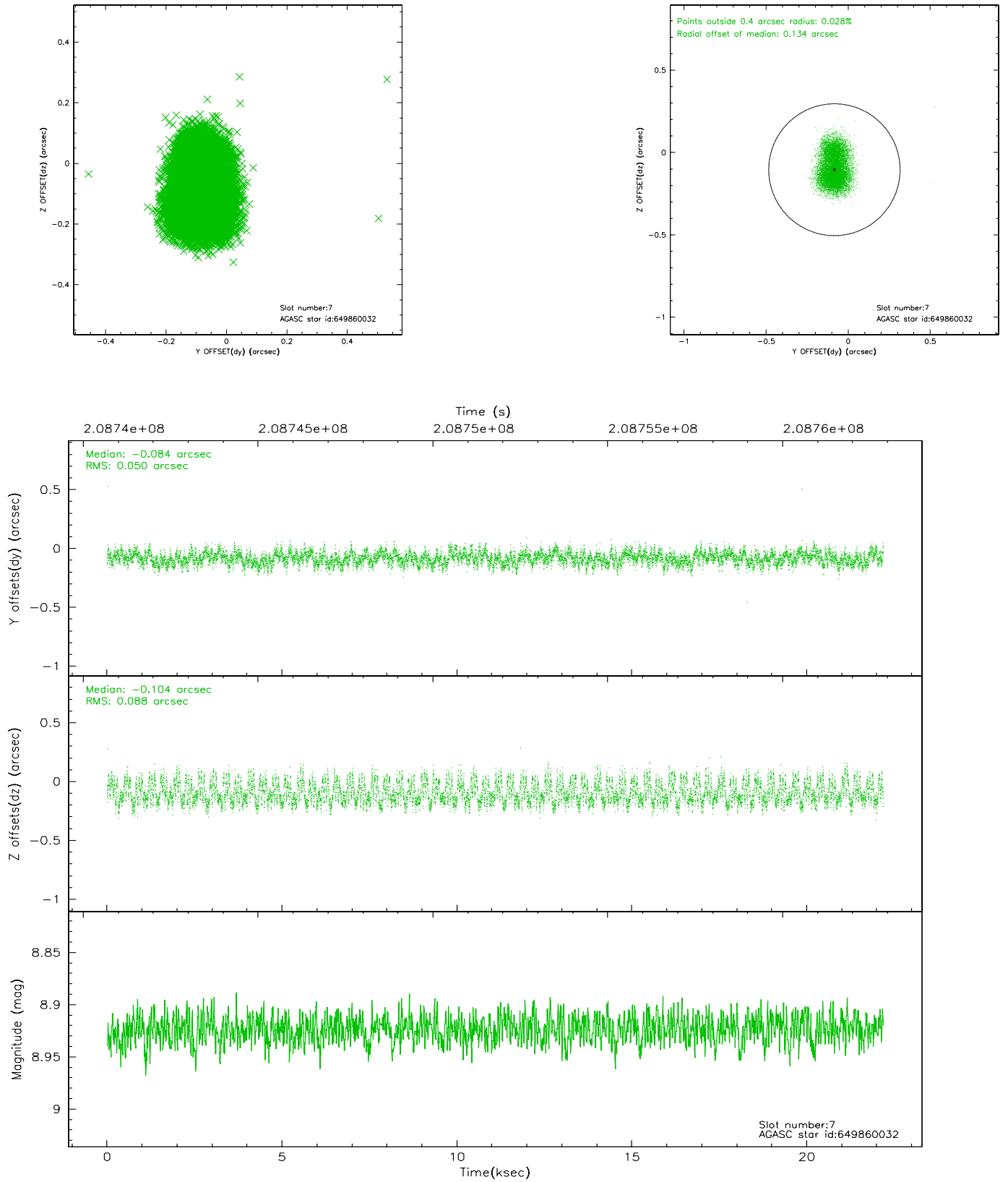
### 2.4.3 Slot 5



## 2.4.4 Slot 6

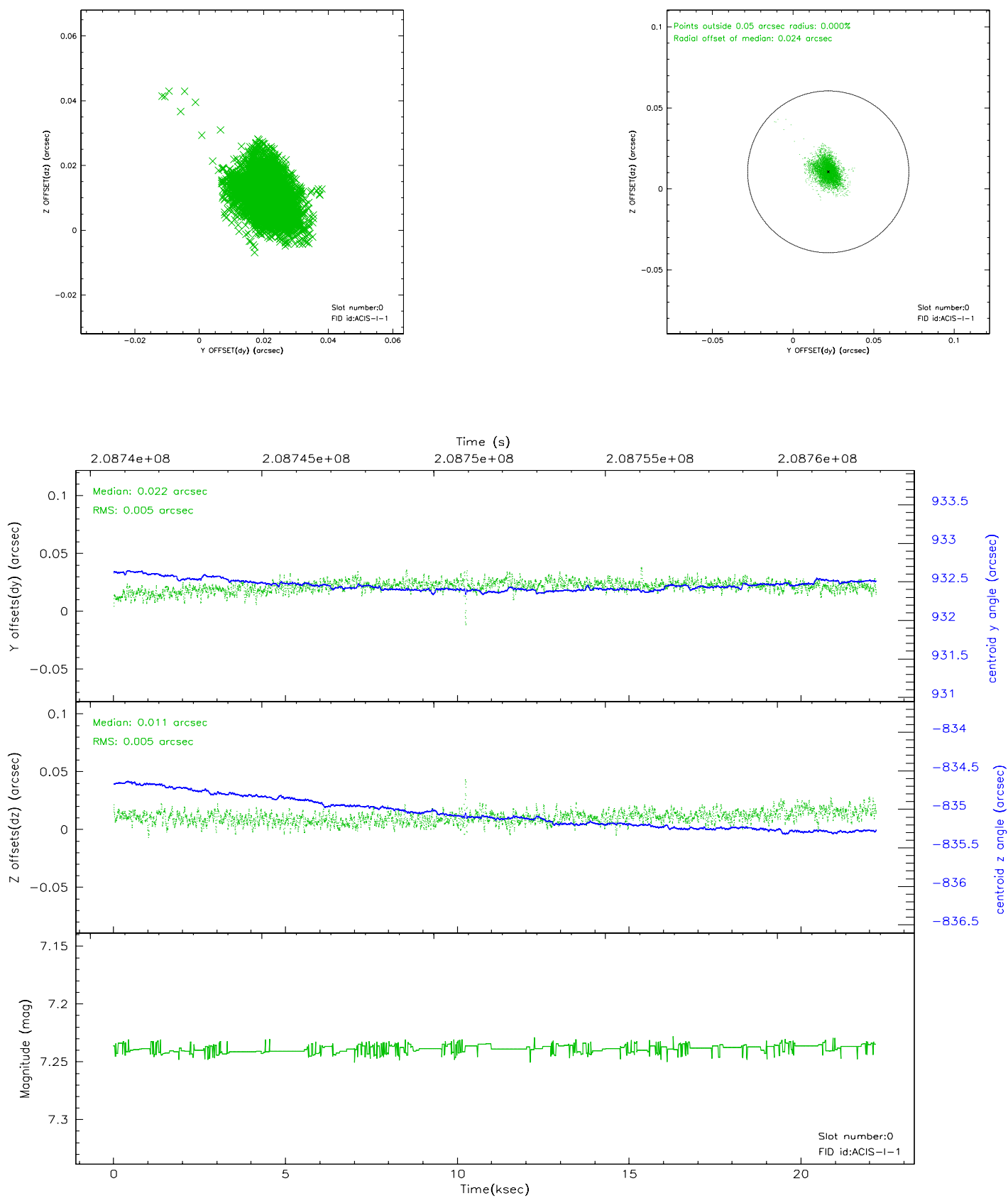


## 2.4.5 Slot 7

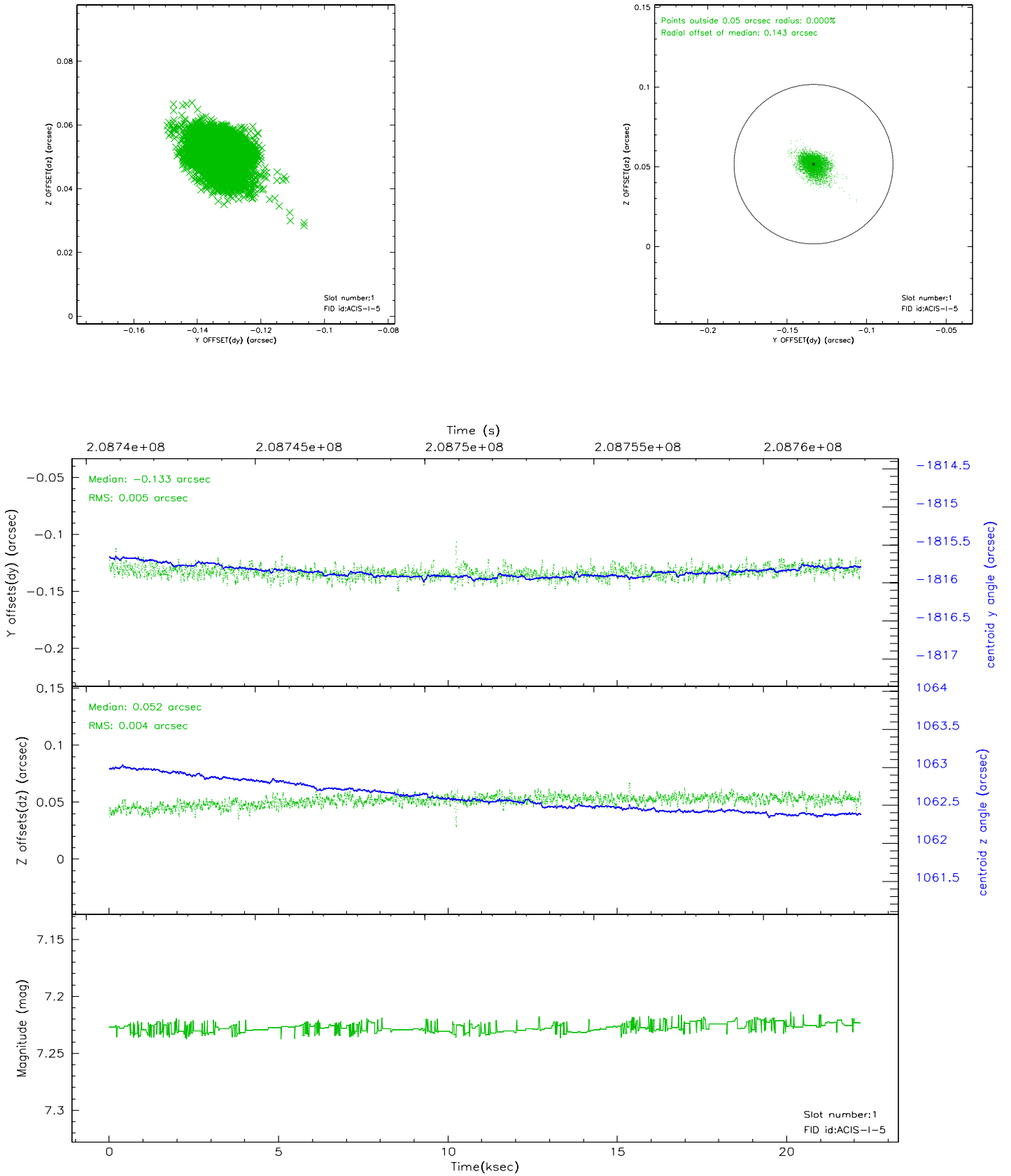


## 2.5 FID Slots

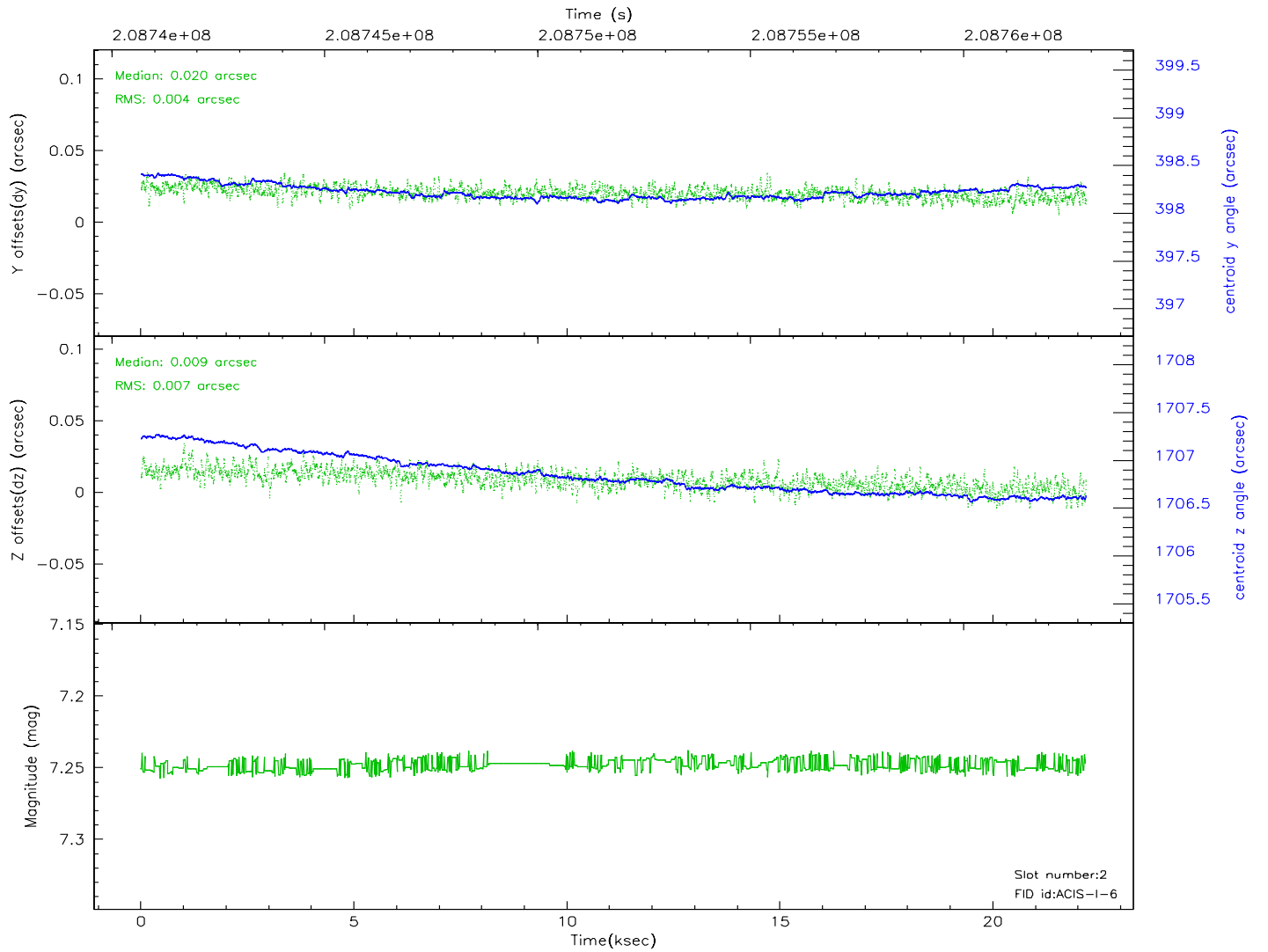
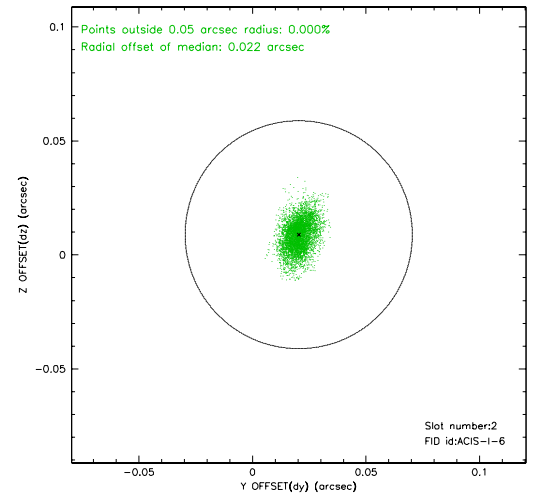
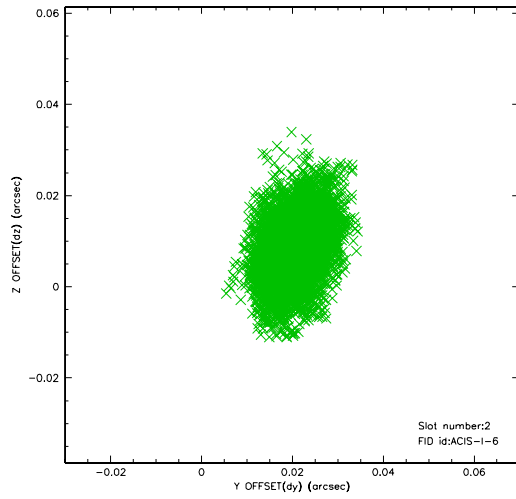
### 2.5.1 Slot 0



## 2.5.2 Slot 1

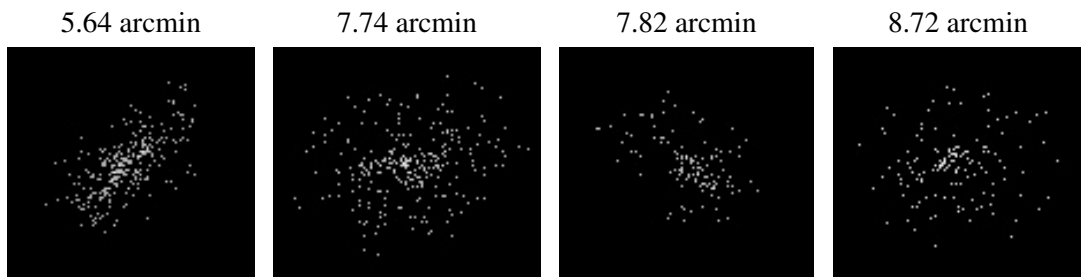


### 2.5.3 Slot 2





### 3 Point Sources



## A Summary

### A.1 Status

V&V Scientist	Jen Lauer
V&V Date (YYYY-MM-DD)	2006.04.25
V&V Edition	1
V&V Disposition and Status	OK
V&V Charge Time	21.768

### A.2 Comments