

V&V Reference Report

L2 ASCDS Version : 7.6.7.2

Observation 4984 - L2 Version 001
Chandra X-Ray Center

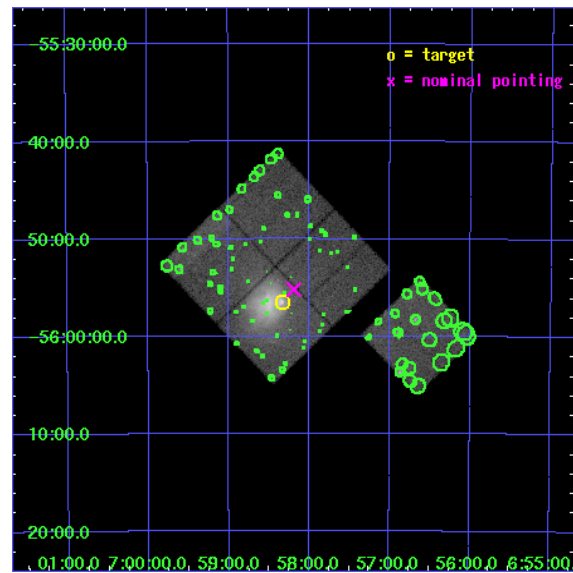
L2 Processing Date : Apr 25 2006

Contents

1	Front	2
2	OBI	3
2.1	OBI	3
2.1.1	Images	3
2.1.2	Bias	3
2.1.3	Parameters	4
2.1.4	Events	4
2.2	Compared Parameters	5
2.3	Aspect	6
2.4	Star Slots	9
2.4.1	Slot 3	9
2.4.2	Slot 4	10
2.4.3	Slot 5	11
2.4.4	Slot 6	12
2.4.5	Slot 7	13
2.5	FID Slots	14
2.5.1	Slot 0	14
2.5.2	Slot 1	15
2.5.3	Slot 2	16
3	Point Sources	17
A	Summary	18
A.1	Status	18
A.2	Comments	18

1 Front

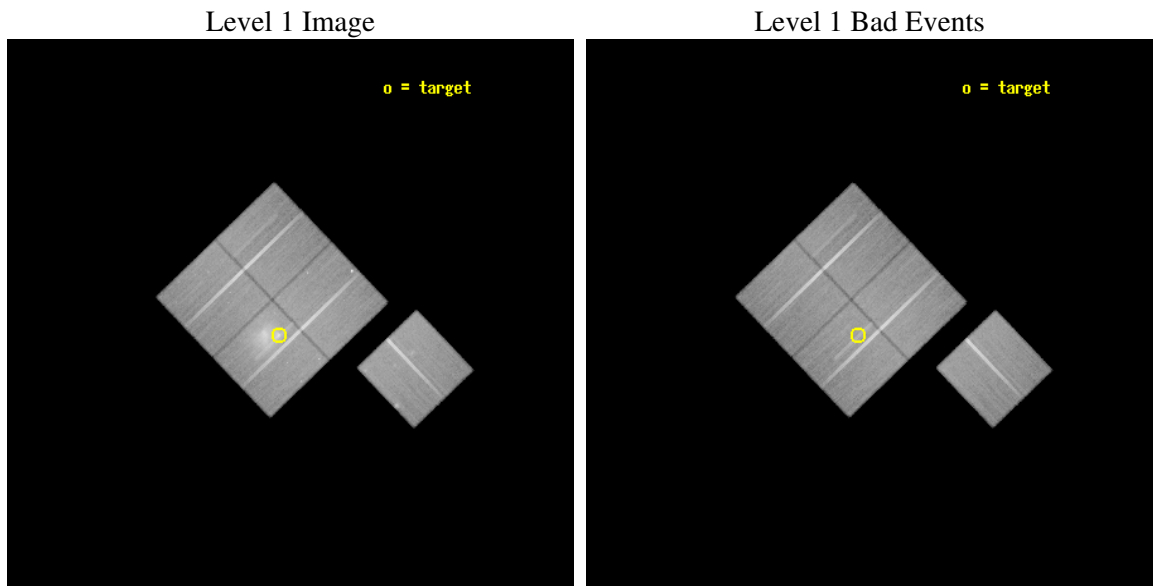
seq_num	800429
obs_id	4984
title	THE MOST INTERESTING CLUSTER IN THE UNIVERSE
observer	Dr Maxim Markevitch
object	1E0657-56
dtcycle	0
cycle	P
ra_targ	104.5827
dec_targ	-55.9415
ra_nom	104.54735825651
dec_nom	-55.919875666513
roll_nom	136.1794064311
revision	2
ontime	77124.81789127
livetime	76117.125367056
ontime0	77118.535960853
ontime1	77131.099851698
ontime2	77118.535911053
ontime3	77124.81789127
ontime6	77127.958891481
l2events	320557



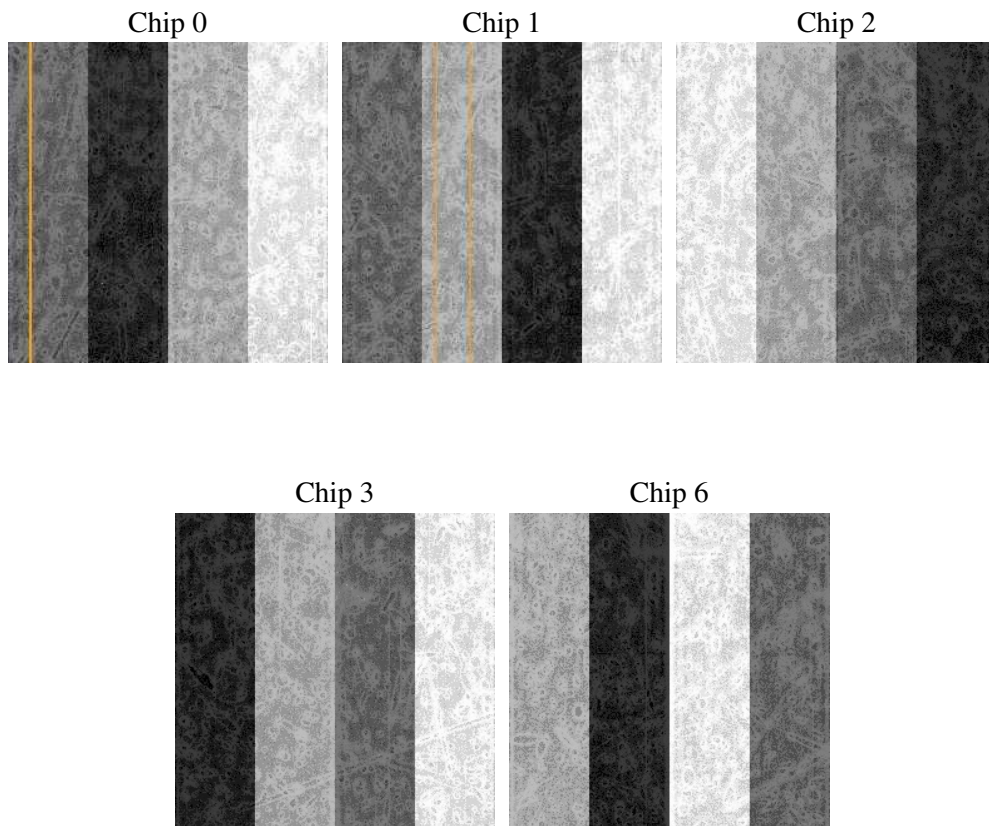
2 OBI

2.1 OBI

2.1.1 Images



2.1.2 Bias



2.1.3 Parameters

obi_num	1
ascdsver	7.6.7.2
caldbver	3.2.1
date	2006-04-25T02:47:33
revision	2

sched_exp_time	77000.000000
ontime	77629.881795168
ontime0	77623.599864751
ontime1	77636.163735718
ontime2	77623.599795073
ontime3	77629.881795168
ontime6	77633.022795379
l1events	2540156

2.1.4 Events

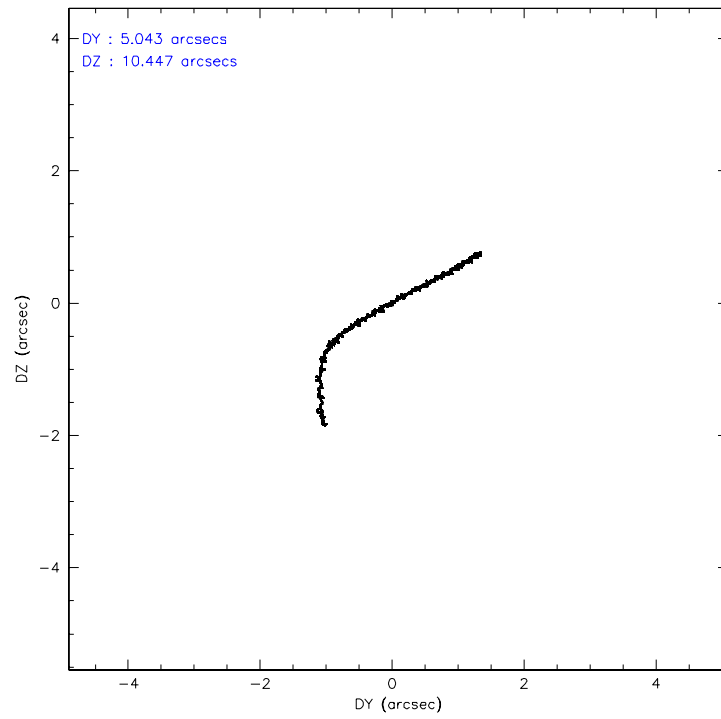
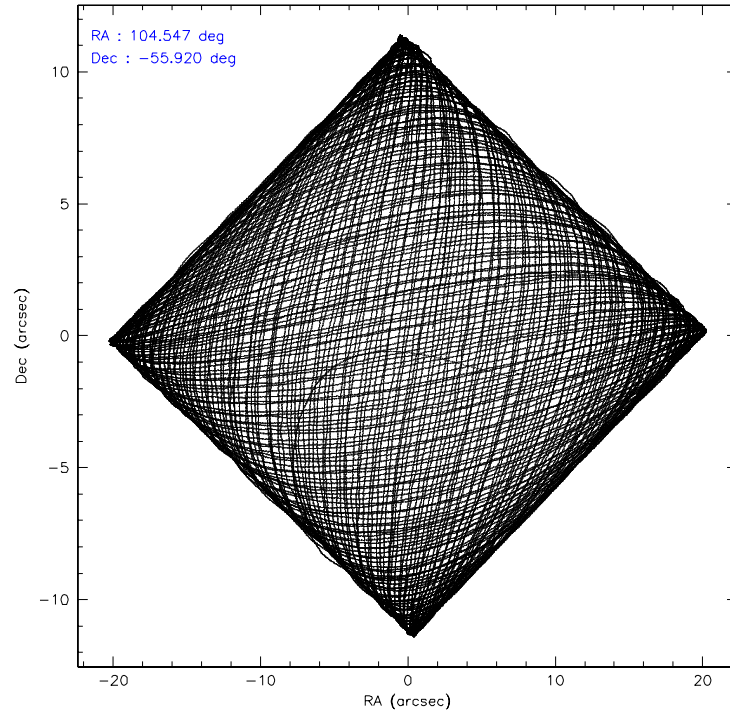
	ccd 0	ccd 1	ccd 2	ccd 3	ccd 6
level 1 events	453044	464789	517030	603795	501498
rejected events	405590	405659	465847	450634	447920
rejected %	89%	87%	90%	74%	89%

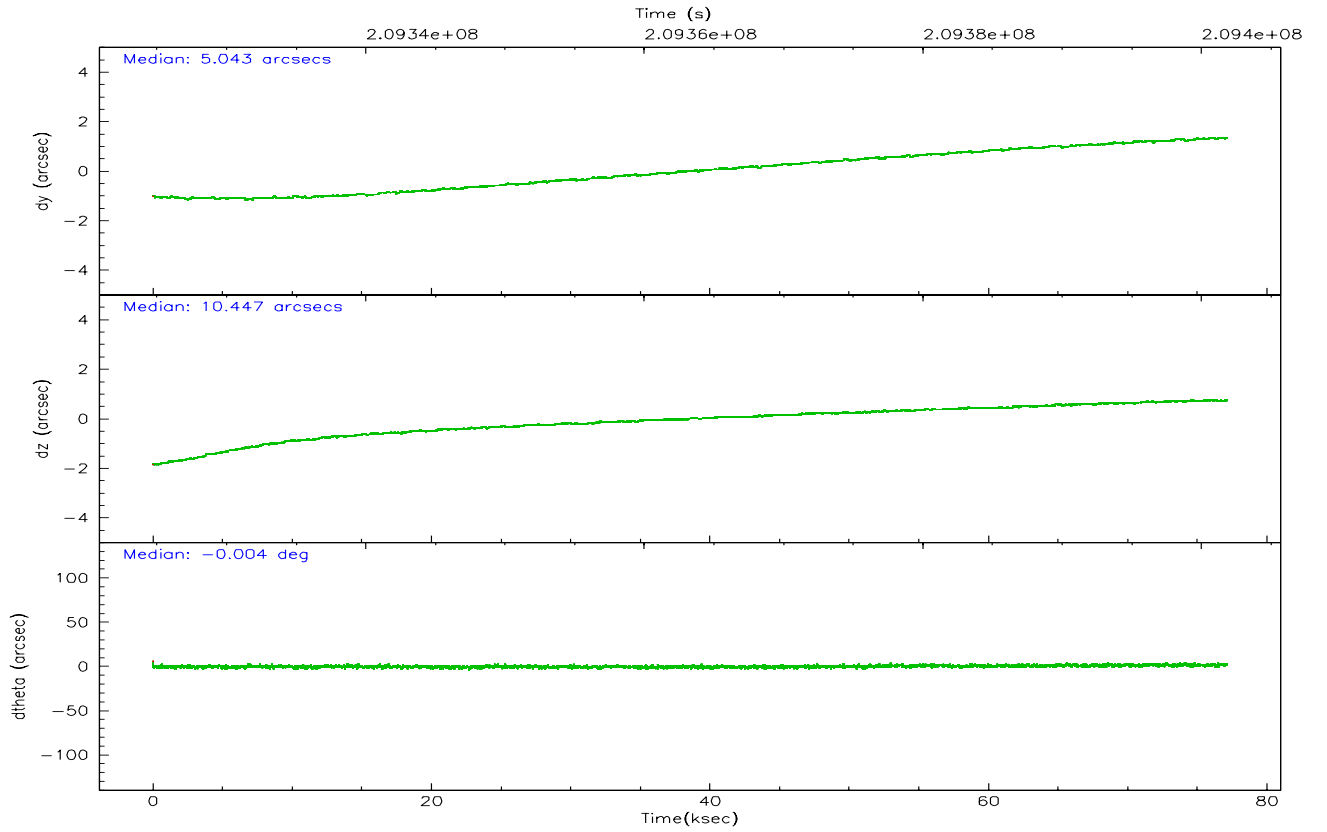
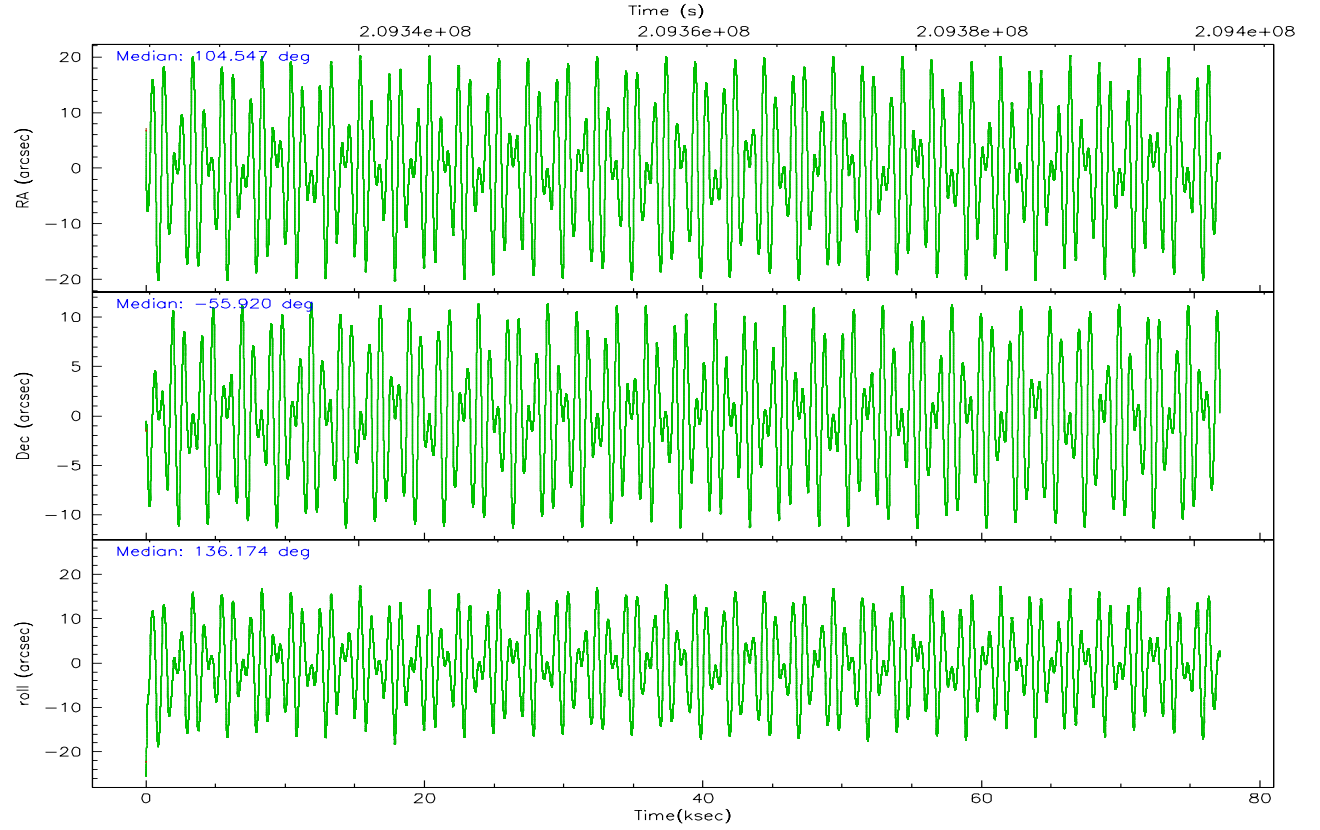
	ccd 0	ccd 1	ccd 2	ccd 3	ccd 6
grade 0 events	16652	23860	20497	103392	20801
	3%	5%	3%	17%	4%
grade 1 events	221	233	242	735	241
	0%	0%	0%	0%	0%
grade 2 events	11188	12269	11428	20732	10978
	2%	2%	2%	3%	2%
grade 3 events	5721	6380	5321	8866	5790
	1%	1%	1%	1%	1%
grade 4 events	5165	6138	5403	8587	5697
	1%	1%	1%	1%	1%
grade 5 events	16840	18314	16068	19390	19068
	3%	3%	3%	3%	3%
grade 6 events	9054	10896	8847	12151	10647
	1%	2%	1%	2%	2%
grade 7 events	388203	386699	449224	429942	428276
	85%	83%	86%	71%	85%

2.2 Compared Parameters

Parameter	Planned	Actual	Parameter	Planned	Actual
Instrument	ACIS	ACIS	Obspar format version number	6	6
Detector	ACIS-01236	ACIS-01236	Obspar file type	PREDICTED	ACTUAL
Grating	NONE	NONE	Obspar update status	NONE	UPDATED
Data mode	VFAINT	VFAINT	On-chip summing requested	N	N
Observation mode	POINTING	POINTING	Subarray requested	NONE	NONE
Pointing RA	104.594854	104.5473582565093	Alternating exposures requested	N	N
Pointing Dec	-55.926296	-55.91987566651337	Primary exposure time	0.000000	3.1
Pointing Roll	136.010067	136.1794064310979			
SIM focus pos (mm)	-0.782348	-0.7809083437167272			
SIM defocus (mm)	0	0.001439871863259334			
SIM translation stage pos (mm)	-226.592463	-226.5875806612856			
SIM translation stage offset (mm)	-7	-7.004872341644045			
Observation start time	209324863.184000	209323645.09232			
Observation start date	2004-08-19T17:46:39	2004-08-19T17:27:25			
Observation end time	209401863.184000	209402554.72084			
Observation end date	2004-08-20T15:09:59	2004-08-20T15:22:34			
Read mode	TIMED	TIMED			

2.3 Aspect



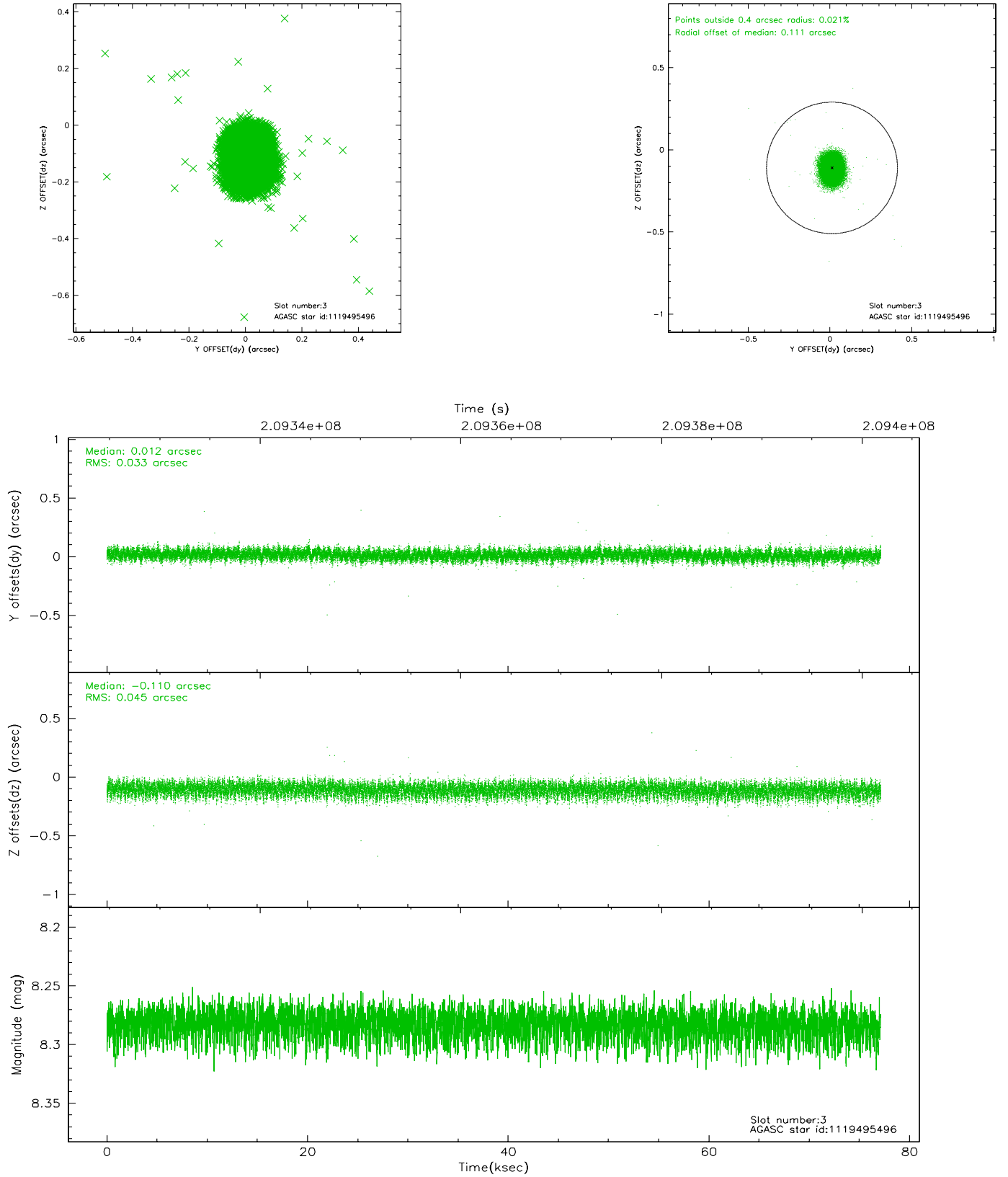


Slot Statistics

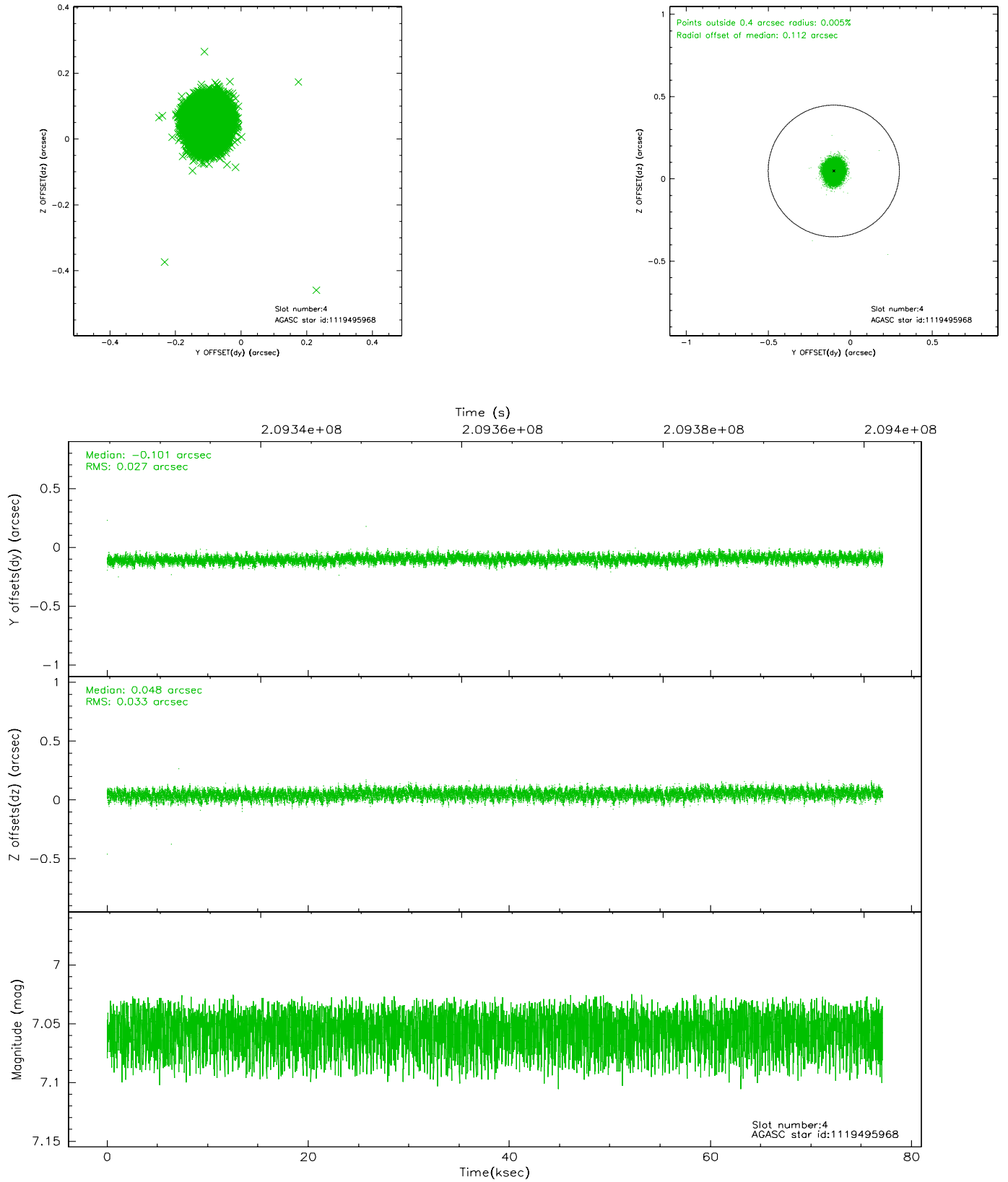
slot	status	id	mag	n_pts	med_dy	med_dz	dr1	dr2	ra	dec	mean_y	mean_z
0	FID	ACIS-I-1	7.23	18815	0.065	-0.058	0.026	0.037	0.000000	0.000000	934.66	-977.63
1	FID	ACIS-I-2	7.16	18811	-0.127	0.057	0.025	0.042	0.000000	0.000000	-760.03	-983.07
2	FID	ACIS-I-4	7.14	18812	-0.039	0.073	0.022	0.065	0.000000	0.000000	2154.01	923.27
3	GUIDE	1119495496	8.28	37621	0.012	-0.110	0.058	0.095	104.298364	-55.915101	457.56	387.51
4	GUIDE	1119495968	7.05	37625	-0.101	0.048	0.046	0.073	105.873528	-55.948238	-1925.53	-1716.19
5	GUIDE	1119496704	7.86	37618	0.139	0.077	0.059	0.095	104.368364	-55.667750	977.01	-349.40
6	GUIDE	1120026344	6.70	37560	-0.091	-0.071	0.059	0.105	104.651539	-56.394853	-1252.94	1135.40
7	GUIDE	1119500592	8.69	37620	0.038	0.056	0.088	0.142	105.814889	-55.642715	-1088.87	-2439.99

2.4 Star Slots

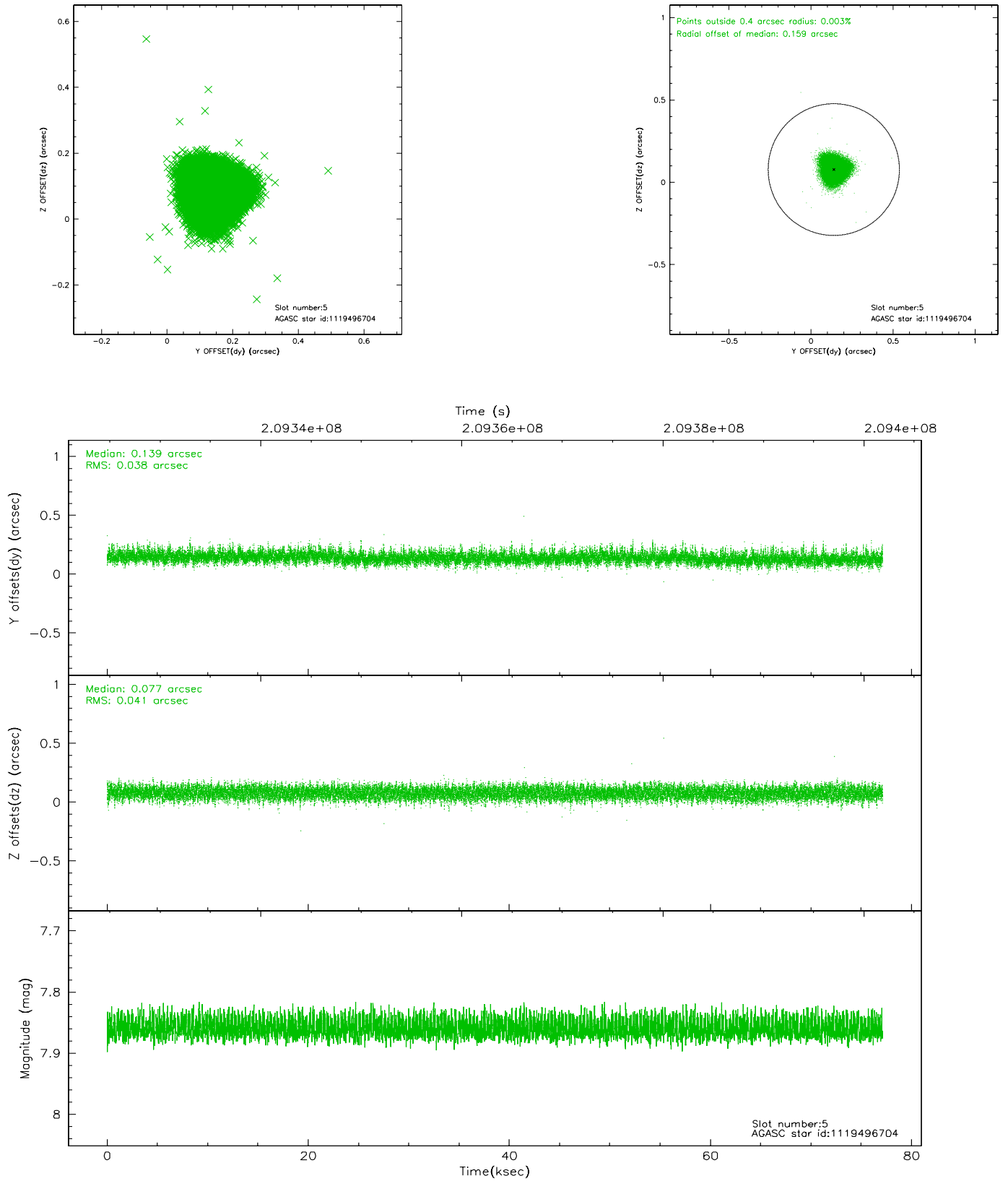
2.4.1 Slot 3



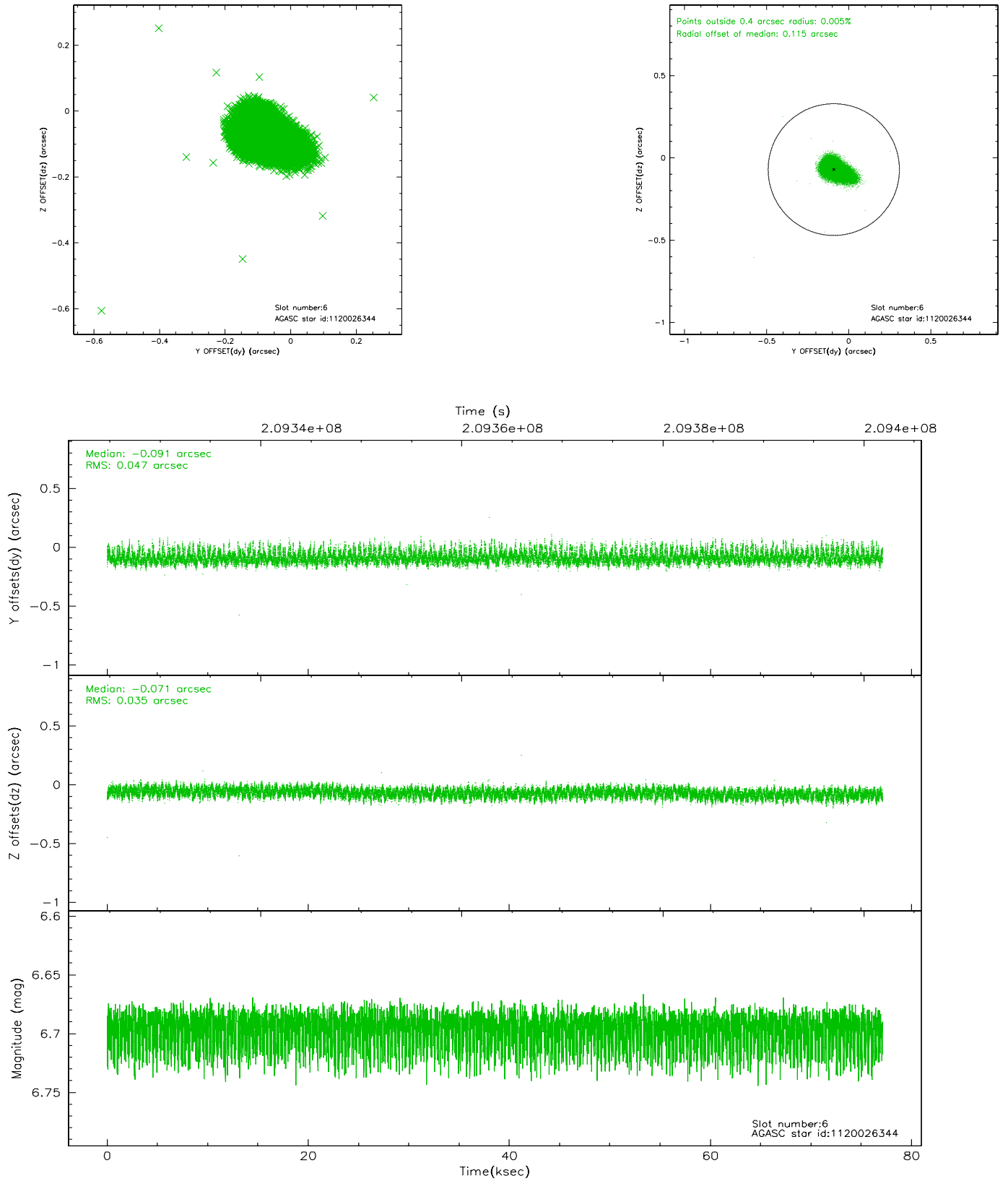
2.4.2 Slot 4



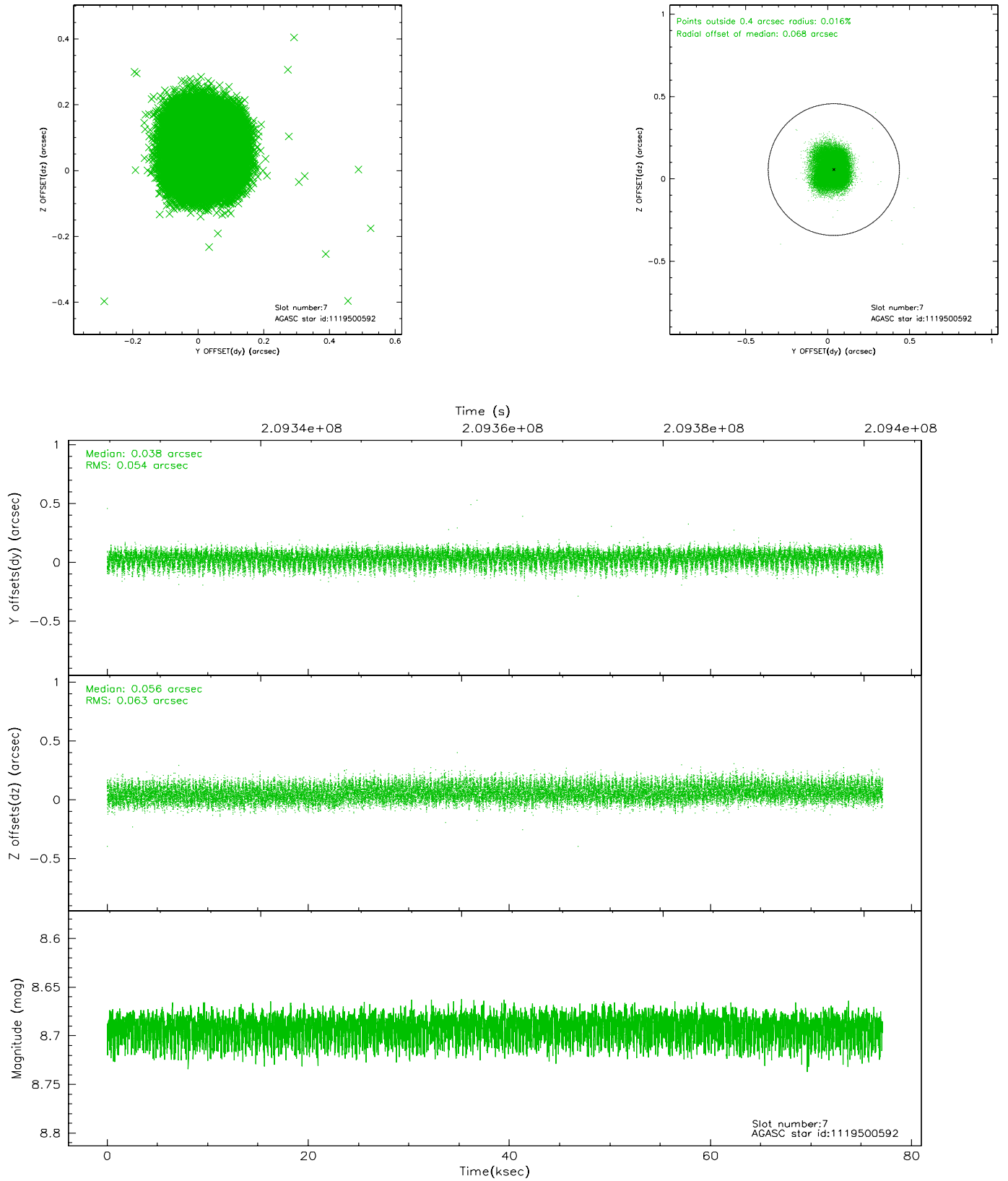
2.4.3 Slot 5



2.4.4 Slot 6

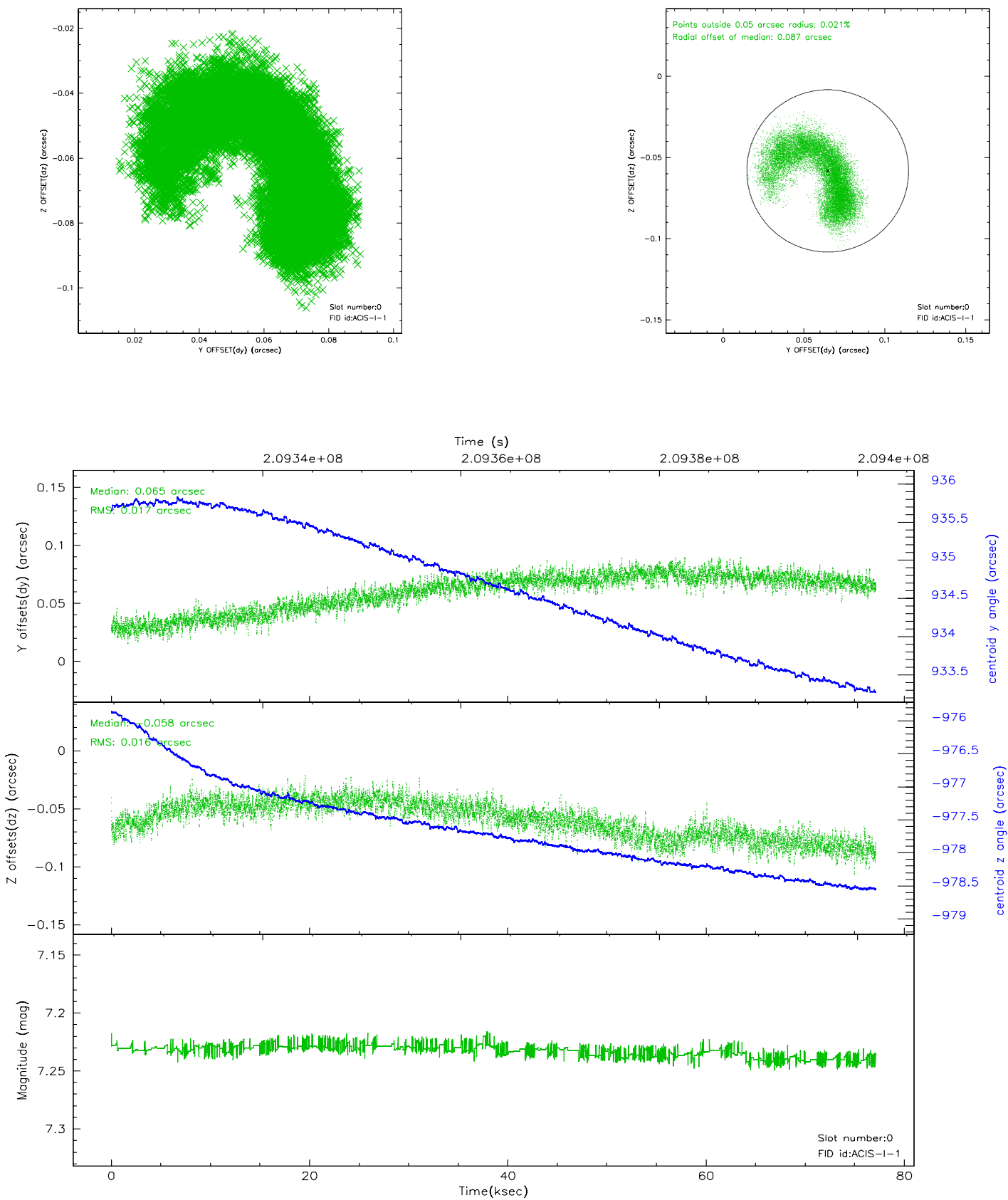


2.4.5 Slot 7

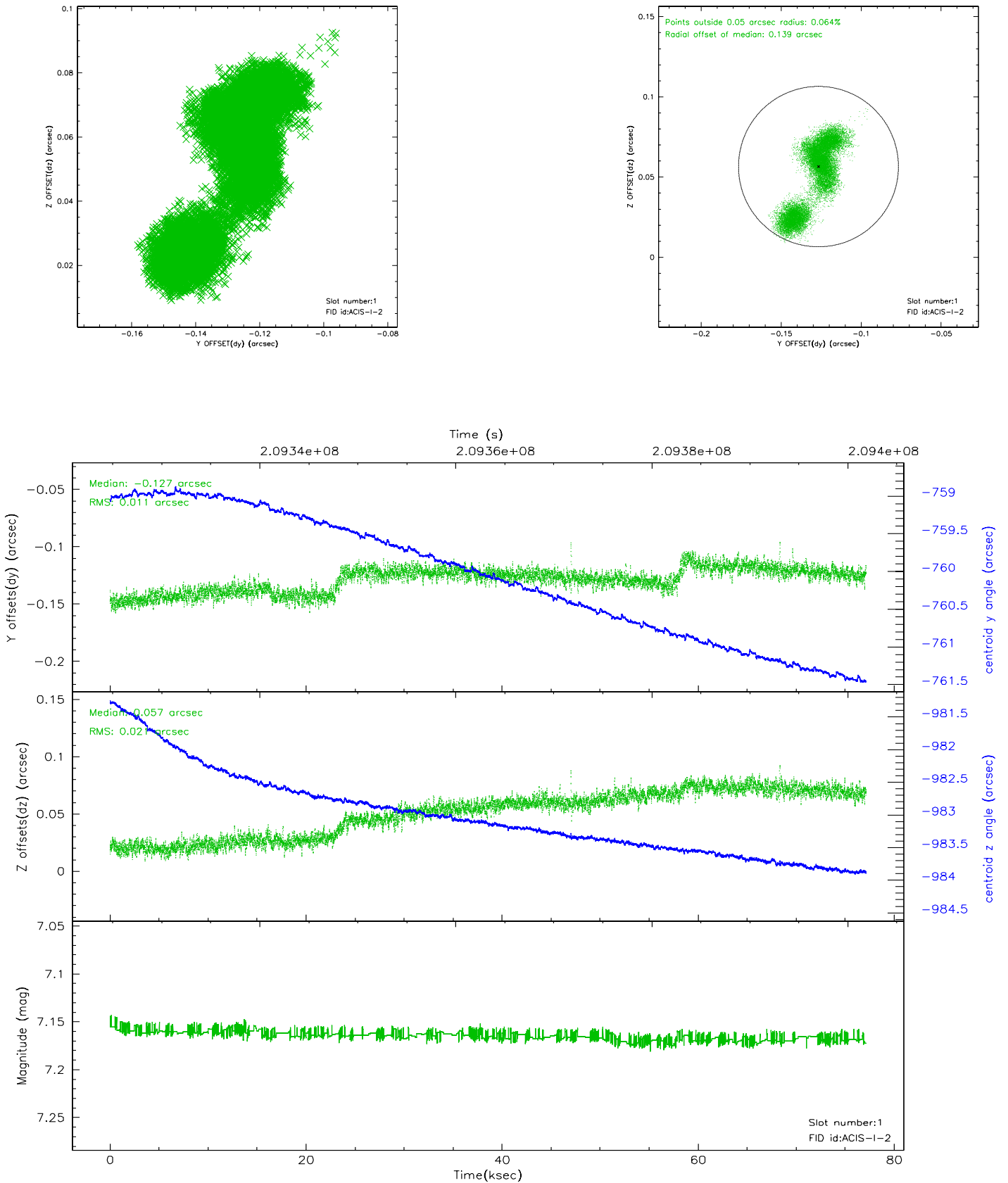


2.5 FID Slots

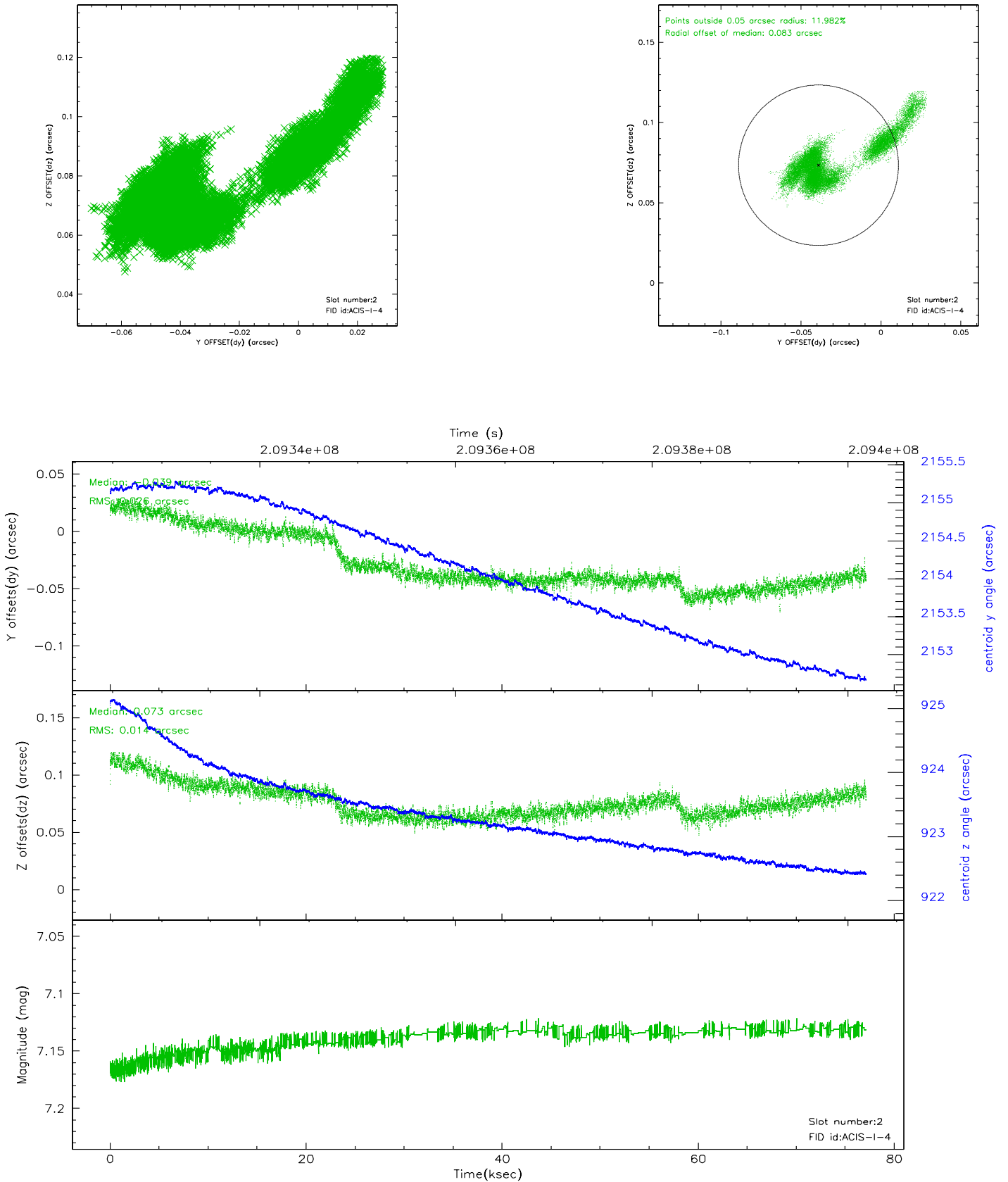
2.5.1 Slot 0



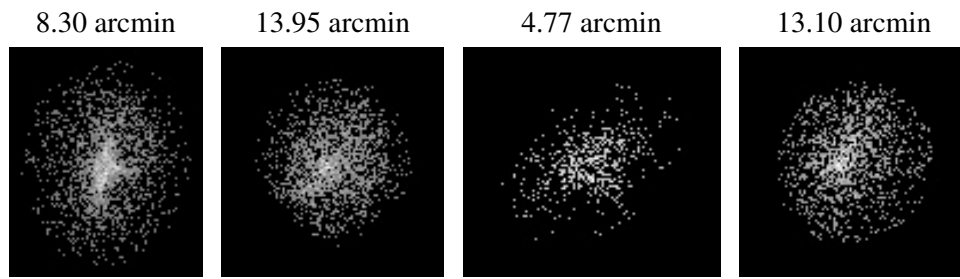
2.5.2 Slot 1



2.5.3 Slot 2



3 Point Sources



A Summary

A.1 Status

V&V Scientist	Beth Sundheim
V&V Date (YYYY-MM-DD)	2006.04.25
V&V Edition	1
V&V Disposition and Status	OK
V&V Charge Time	77.124

A.2 Comments

Focal plane temperature spikes early in the observation, then settles.