

V&V Reference Report

L2 ASCDS Version : 8.5.1

Observation 4980 - L2 Version 3
Chandra X-Ray Center

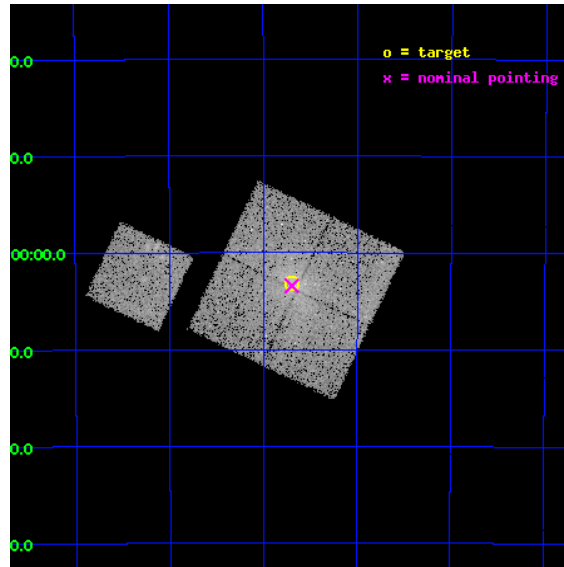
L2 Processing Date : Dec 17 2012

Contents

1	Front	2
2	OBI	3
2.1	OBI	3
2.1.1	Images	3
2.1.2	Bias	3
2.1.3	Parameters	4
2.1.4	Events	4
2.2	Compared Parameters	5
2.3	Aspect	6
2.4	Star Slots	9
2.4.1	Slot 3	9
2.4.2	Slot 4	10
2.4.3	Slot 5	11
2.4.4	Slot 6	12
2.4.5	Slot 7	13
2.5	FID Slots	14
2.5.1	Slot 0	14
2.5.2	Slot 1	15
2.5.3	Slot 2	16
A	Summary	17
A.1	Status	17
A.2	Comments	17

1 Front

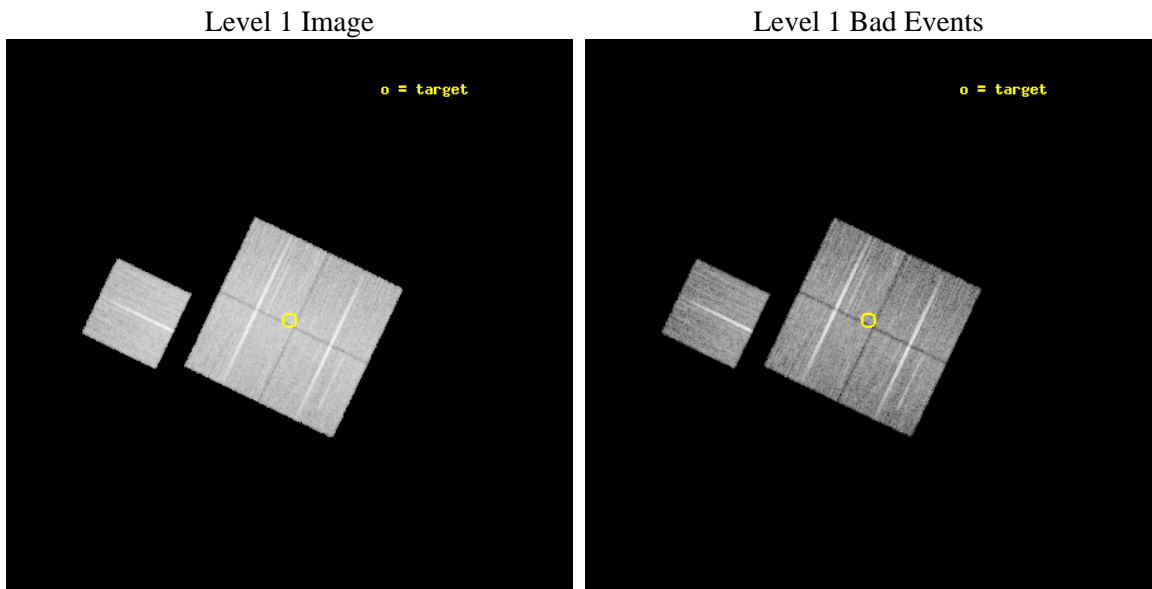
seq_num	800425	Sequence number
obs_id	4980	Observation id
title	Chandra Observations of DLS Shear-Selected Clusters	Proposal title
observer	Prof. John Hughes	Principal investigator
object	DLS J0514-4904	Source name
dtcycle	0	
cycle	P	events from which exps? Prim/Second/Both
ra_targ	78.673667	Observer's specified target RA [deg]
dec_targ	-49.0525	Observer's specified target Dec [deg]
ra_nom	78.674034602097	Nominal RA [deg]
dec_nom	-49.05715240553	Nominal Dec [deg]
roll_nom	295.67617364256	Nominal Roll [deg]
revision	3	Processing version of data
ontime	20140.577020556	Sum of GTIs [s]
livetime	19877.425554505	Livetime [s]
ontime0	20146.858980983	Sum of GTIs [s]
ontime1	20149.999961227	Sum of GTIs [s]
ontime2	20149.999961227	Sum of GTIs [s]
ontime3	20140.577020556	Sum of GTIs [s]
ontime6	20146.858990997	Sum of GTIs [s]
l2events	61100	Number of level 2 events



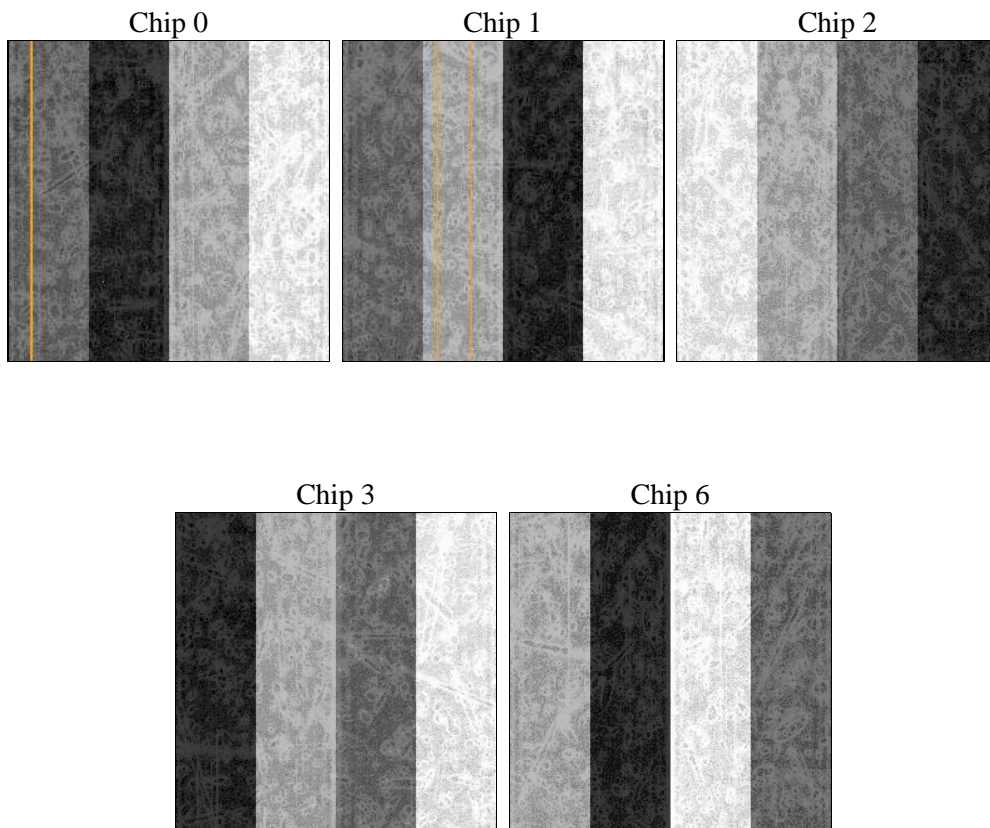
2 OBI

2.1 OBI

2.1.1 Images



2.1.2 Bias



2.1.3 Parameters

obi_num	1	Obi number	sched_exp_time	20000.000000	[s] Scheduled observation exposure time
ascdsver	8.5.1	Processing system revision	ontime	20140.577020556	Sum of GTIs [s]
caldsver	4.5.5	 	ontime0	20146.858980983	Sum of GTIs [s]
date	2012-12-17T06:08:01	Date and time of file creation	ontime1	20149.999961227	Sum of GTIs [s]
revision	3	Processing version of data	ontime2	20149.999961227	Sum of GTIs [s]
			ontime3	20140.577020556	Sum of GTIs [s]
			ontime6	20146.858990997	Sum of GTIs [s]
			l1events	609781	Number of level 1 events

2.1.4 Events

	ccd 0	ccd 1	ccd 2	ccd 3	ccd 6
level 1 events	116736	112163	132425	126679	121778
rejected events	102223	96460	118094	111685	109182
rejected %	87%	85%	89%	88%	89%

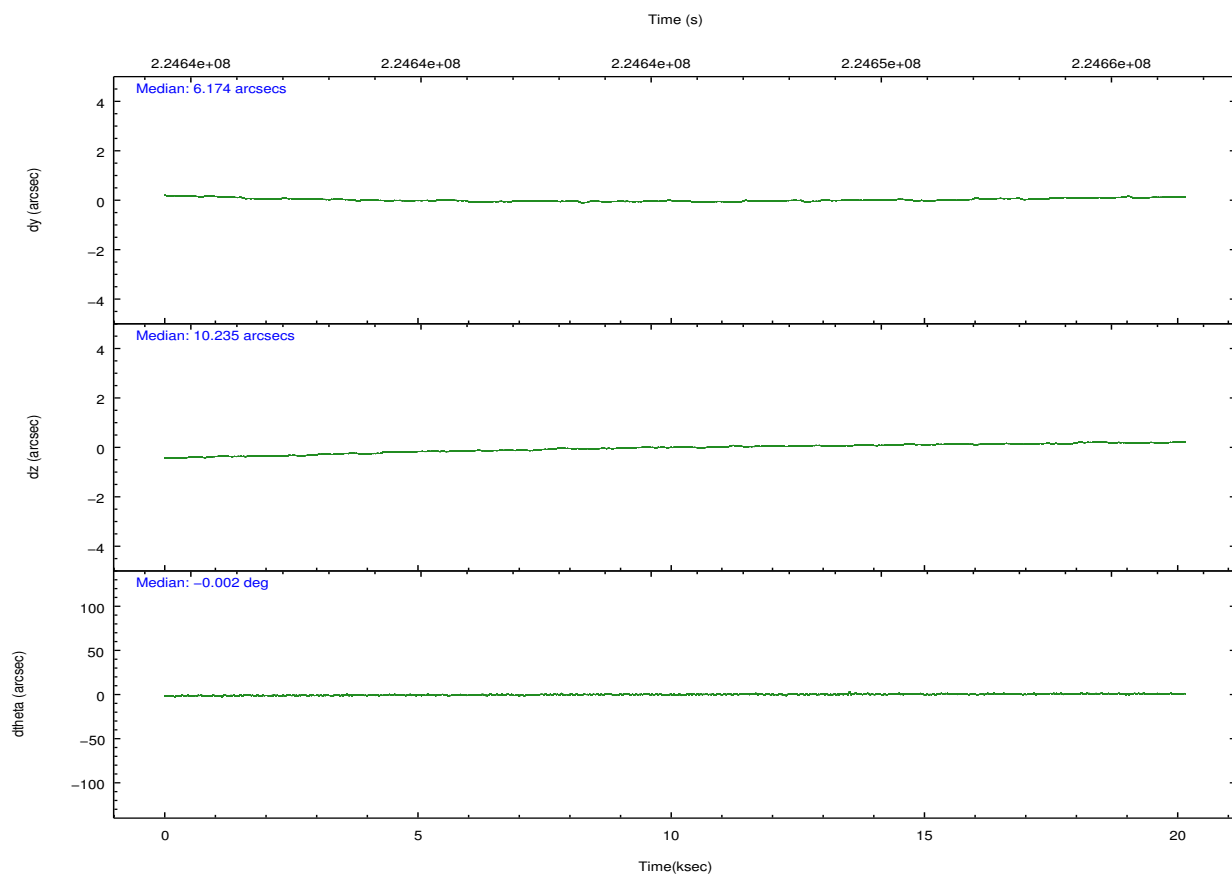
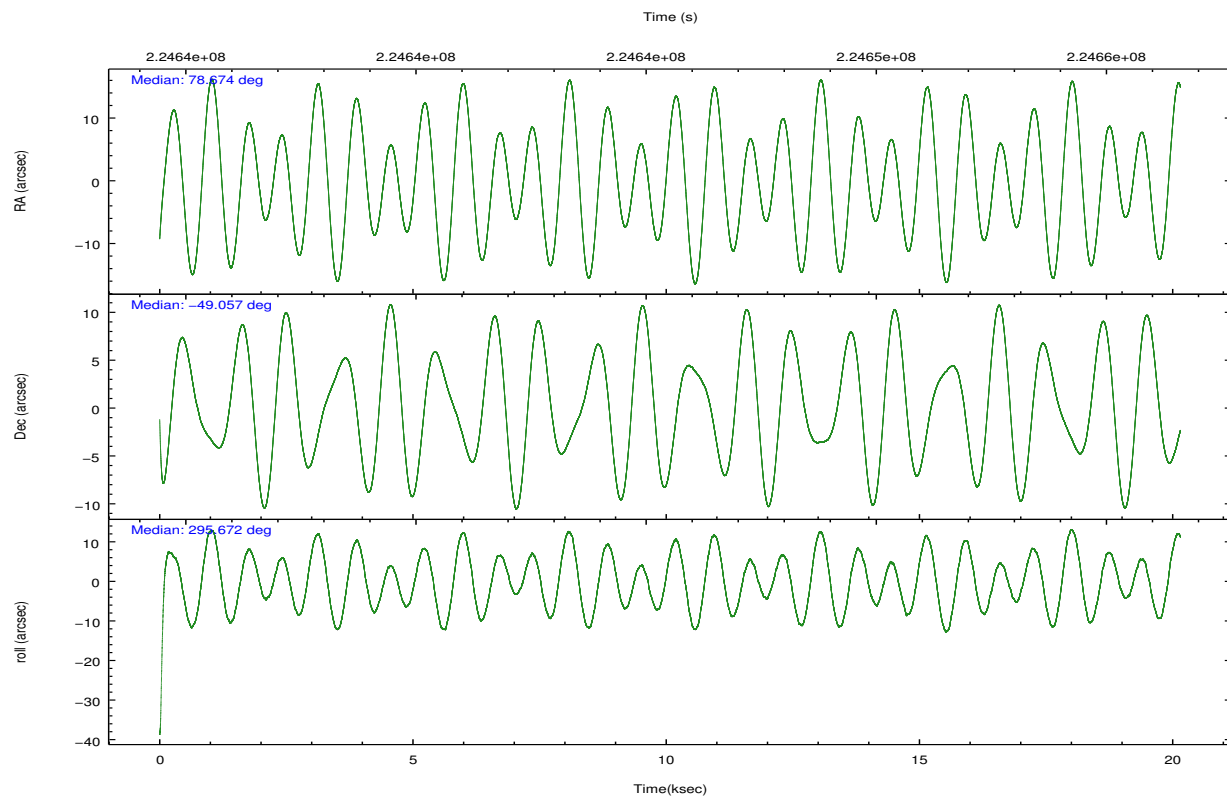
	ccd 0	ccd 1	ccd 2	ccd 3	ccd 6
grade 0 events	5967	6721	6209	7024	4607
	5%	5%	4%	5%	3%
grade 1 events	70	76	80	73	55
	0%	0%	0%	0%	0%
grade 2 events	3178	3159	3092	2822	2751
	2%	2%	2%	2%	2%
grade 3 events	1540	1631	1349	1385	1350
	1%	1%	1%	1%	1%
grade 4 events	1407	1497	1362	1439	1339
	1%	1%	1%	1%	1%
grade 5 events	4393	4674	4131	4978	4800
	3%	4%	3%	3%	3%
grade 6 events	2424	2696	2320	2327	2554
	2%	2%	1%	1%	2%
grade 7 events	97757	91709	113882	106631	104322
	83%	81%	85%	84%	85%

2.2 Compared Parameters

Parameter	Planned	Actual
Instrument	ACIS	ACIS
Detector	ACIS-01236	ACIS-01236
Grating	NONE	NONE
Data mode	VFAINT	VFAINT
Observation mode	POINTING	POINTING
[deg] Pointing RA	78.639405	78.67403460209668
[deg] Pointing Dec	-49.041771	-49.05715240552995
[deg] Pointing Roll	295.441349	295.6761736425551
[mm] SIM focus pos	-0.782348	-0.7809083437167272
[mm] SIM defocus	0	0.001439871863259334
[mm] SIM translation stage pos	-233.592463	-233.5874344608287
[mm] SIM translation stage offset	0	-0.005018542100998502
[s] Observation start time (MET)	224635595.184000	224634616.592
Observation start date	2005-02-12T22:45:31	2005-02-12T22:30:16
[s] Observation end time (MET)	224655595.184000	224656266.64298
Observation end date	2005-02-13T04:18:51	2005-02-13T04:31:06
Read mode	TIMED	TIMED

Parameter	Planned	Actual
Obspar format version number	7	7
Obspar file type	PREDICTED	ACTUAL
Obspar update status	NONE	UPDATED
Number of optional ACIS chips dropped	0	0
On-chip summing requested	N	N
Subarray requested	NONE	NONE
Alternating exposures requested	N	N
[s] Primary exposure time	0.000000	3.1

2.3 Aspect

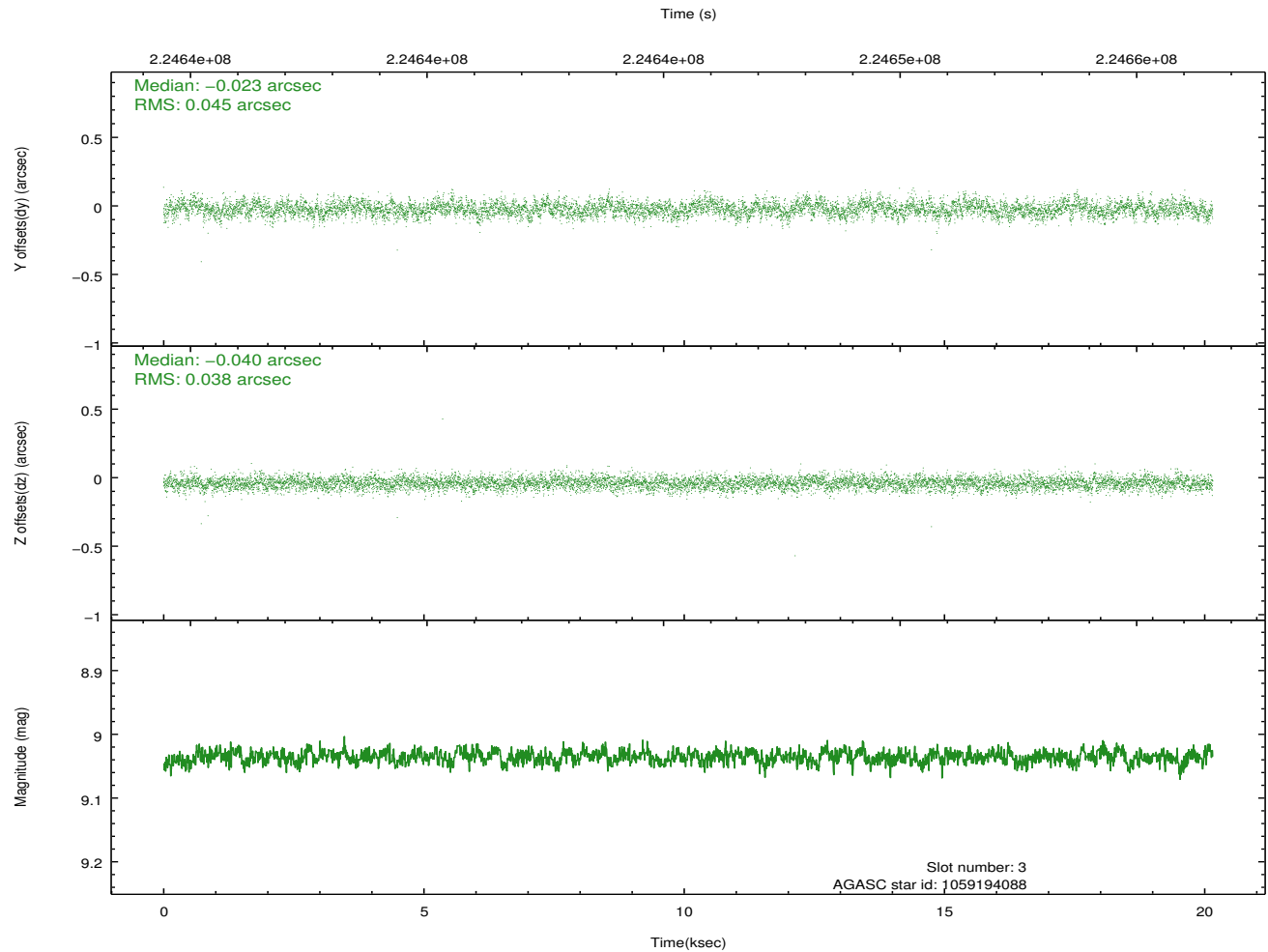
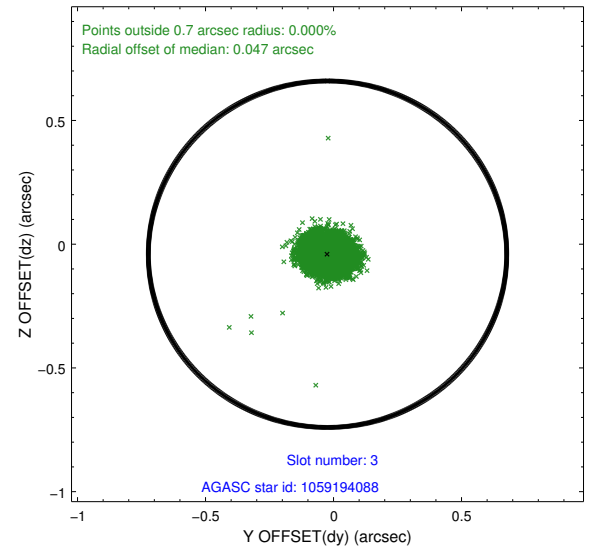
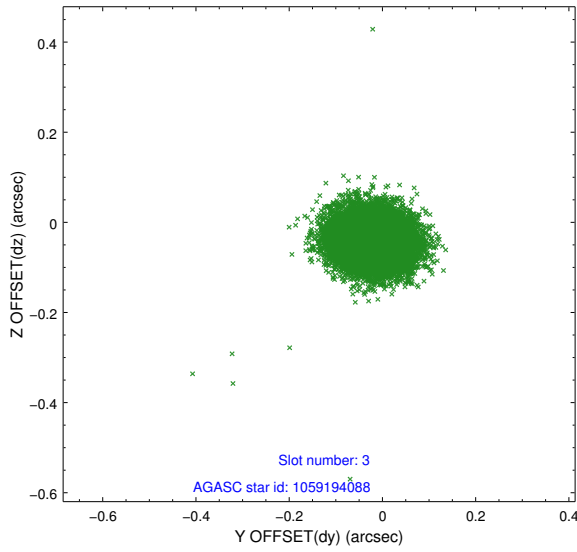


Slot Statistics

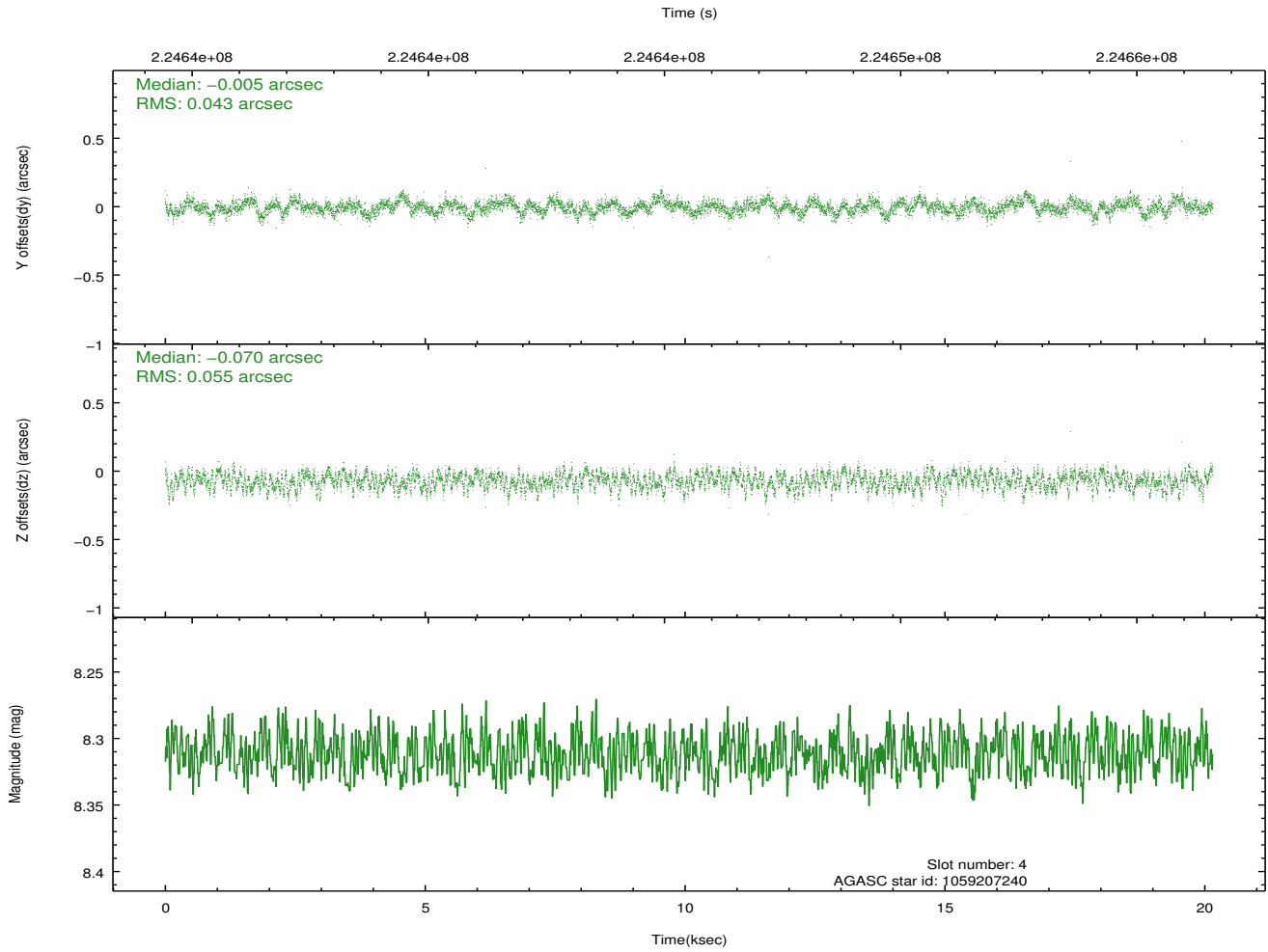
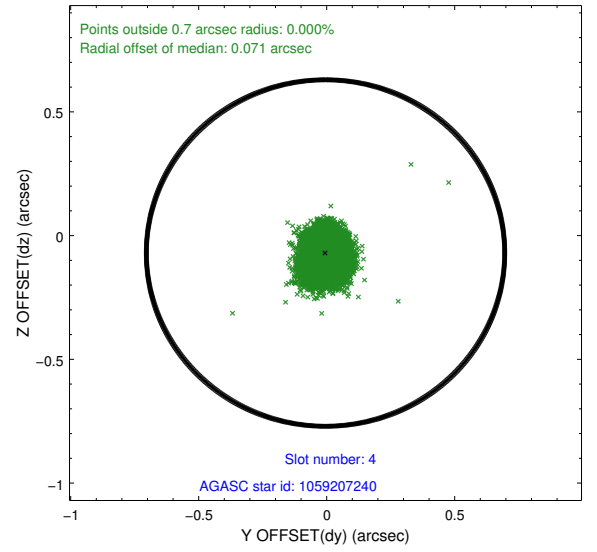
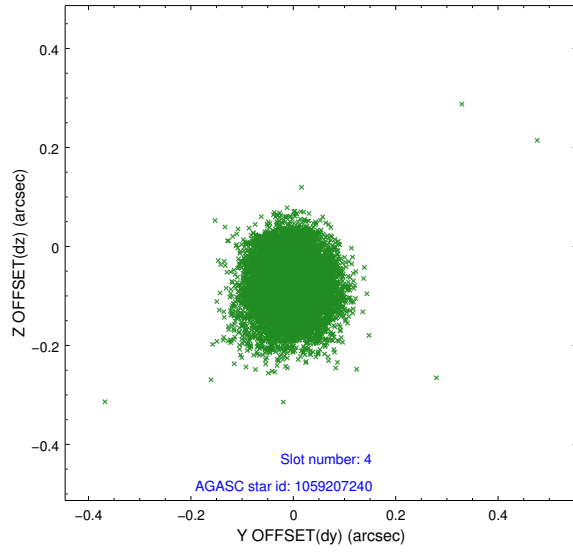
slot	status	id	mag	n_pts	med_dy	med_dz	dr1	dr2	ra	dec	mean_y	mean_z
0	FID	ACIS-I-1	7.24	4916	0.013	0.005	0.011	0.021	0.000000	0.000000	933.52	-833.66
1	FID	ACIS-I-5	7.23	4916	-0.162	0.031	0.007	0.011	0.000000	0.000000	-1814.65	1063.77
2	FID	ACIS-I-6	7.26	4916	0.058	0.033	0.010	0.016	0.000000	0.000000	398.92	1708.47
3	GUIDE	1059194088	9.04	9827	-0.023	-0.040	0.062	0.101	78.349042	-48.493725	-2077.96	221.47
4	GUIDE	1059207240	8.31	9831	-0.005	-0.070	0.073	0.118	78.013724	-49.060243	-568.46	-1363.87
5	GUIDE	1060244808	8.37	9833	0.027	0.082	0.057	0.092	78.979100	-48.690695	-792.42	1270.87
6	GUIDE	1060247984	8.12	9831	-0.001	0.033	0.062	0.097	79.200991	-48.640794	-725.08	1824.75
7	GUIDE	1060771728	7.69	9832	0.004	0.002	0.051	0.083	79.196689	-49.599626	2376.52	309.98

2.4 Star Slots

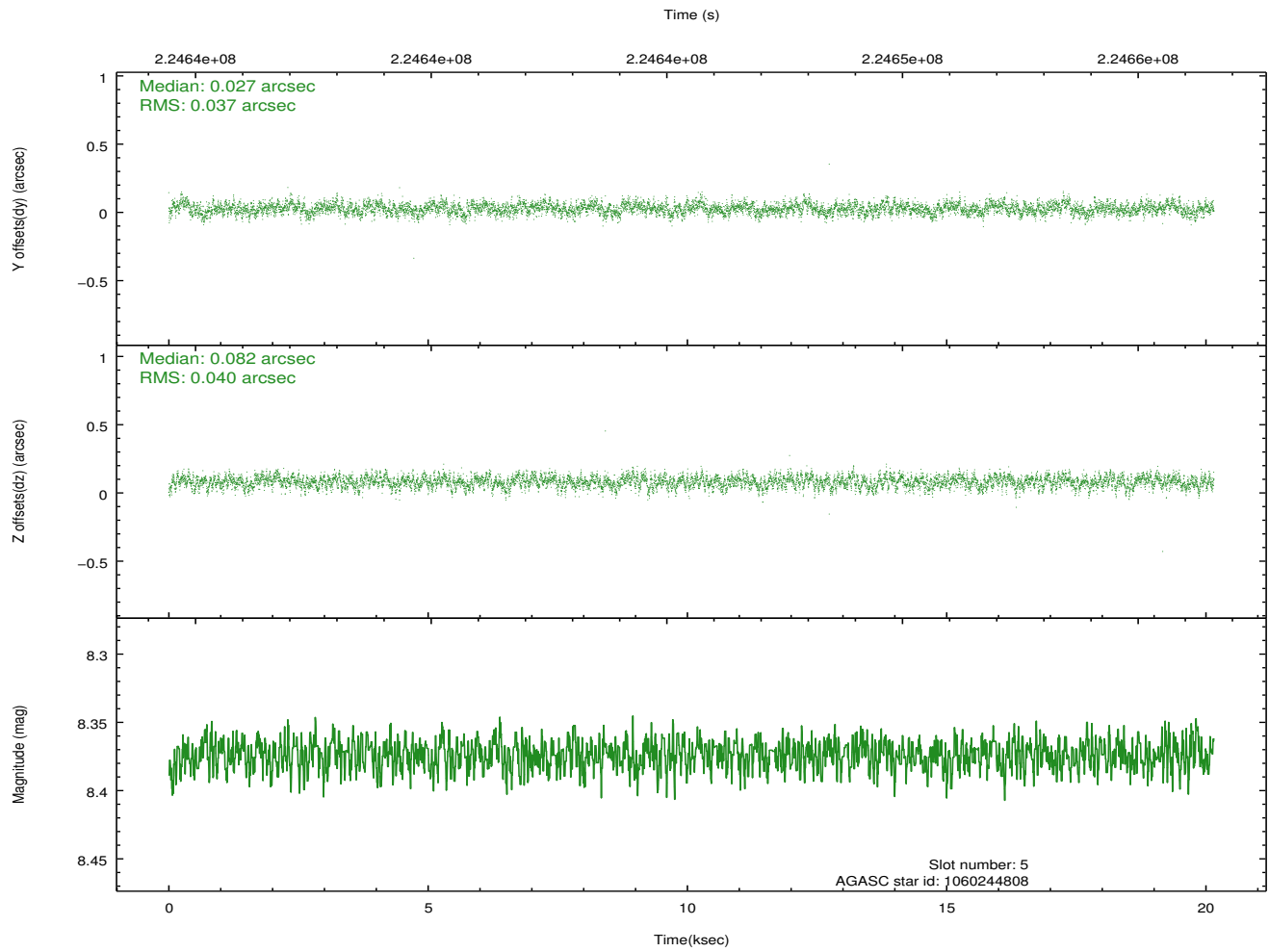
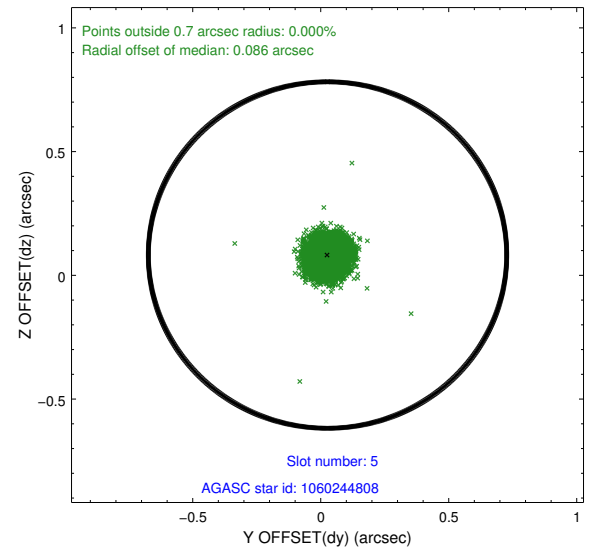
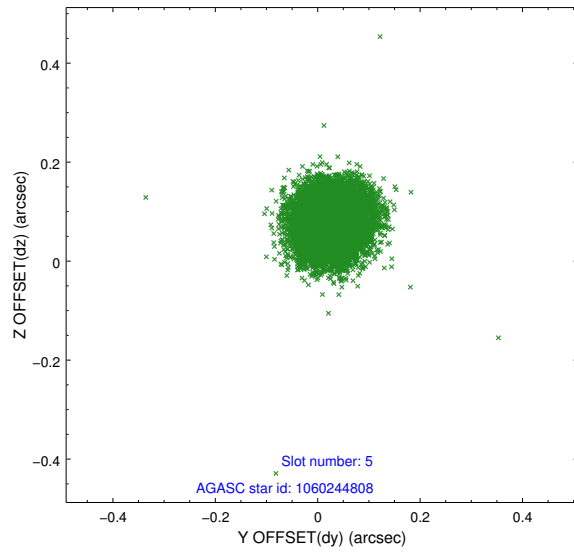
2.4.1 Slot 3



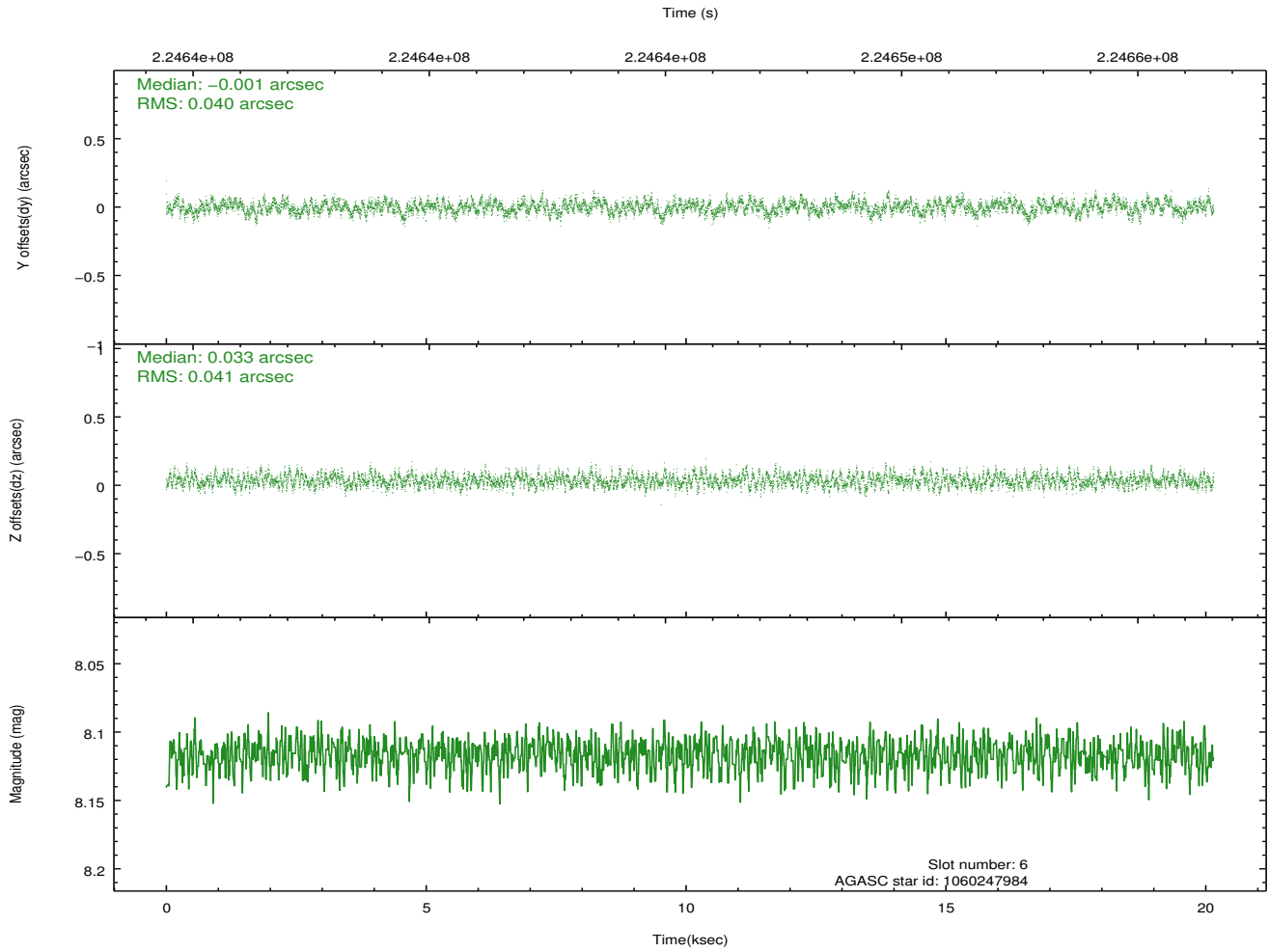
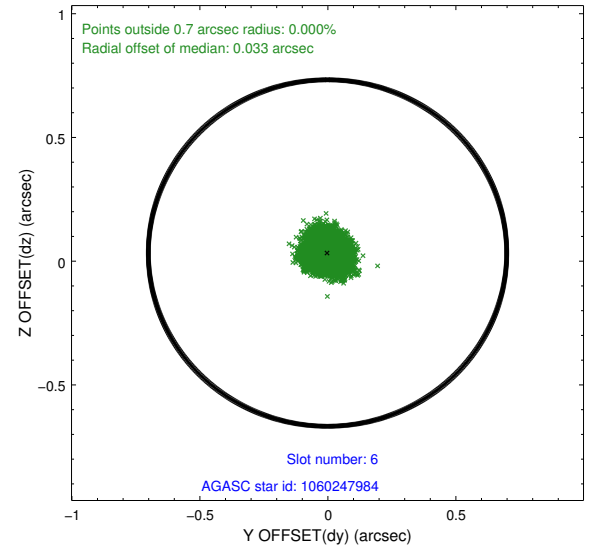
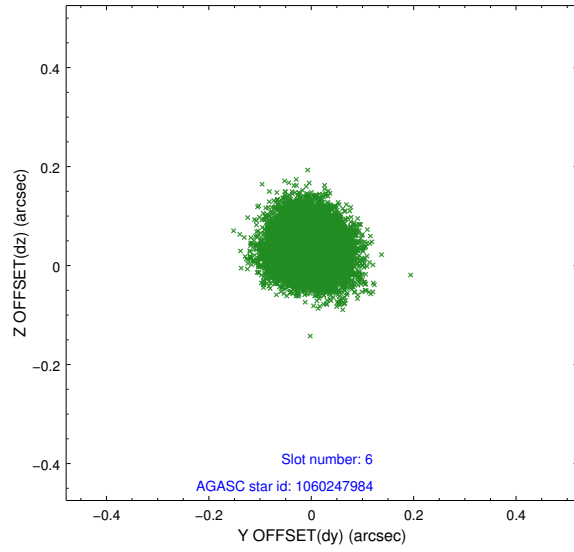
2.4.2 Slot 4



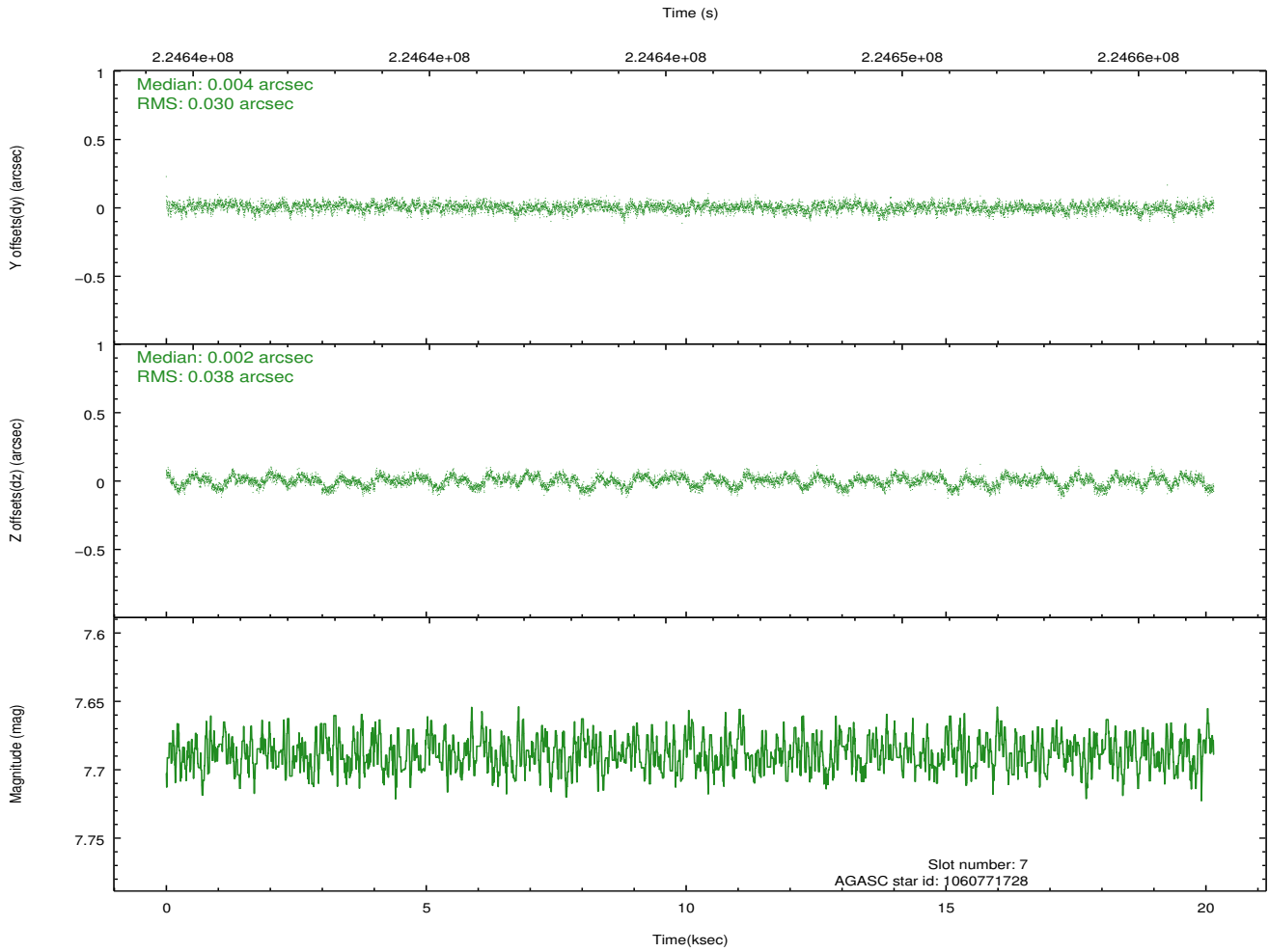
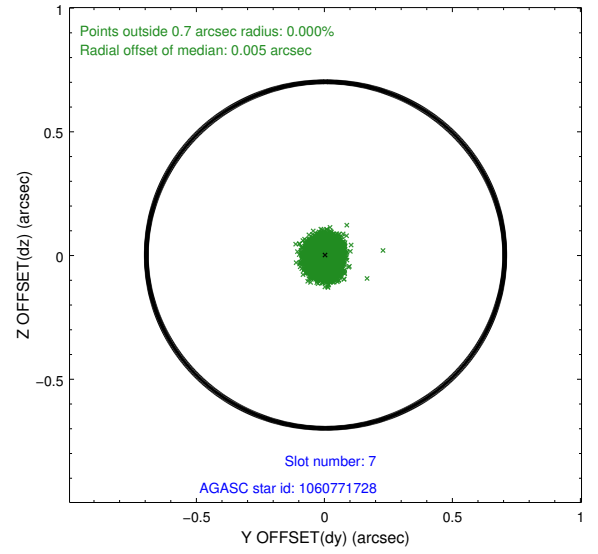
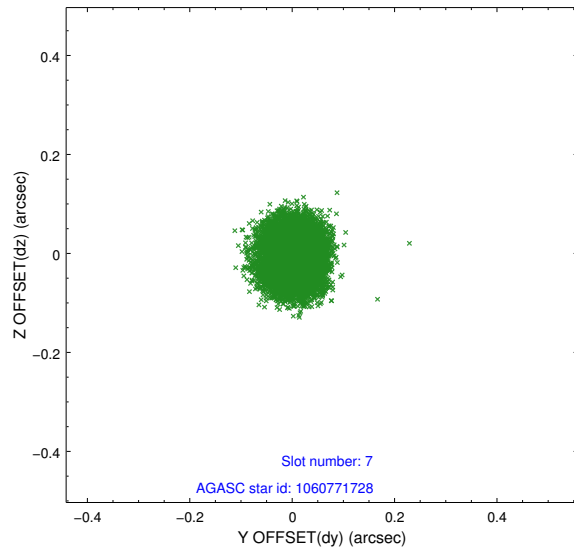
2.4.3 Slot 5



2.4.4 Slot 6

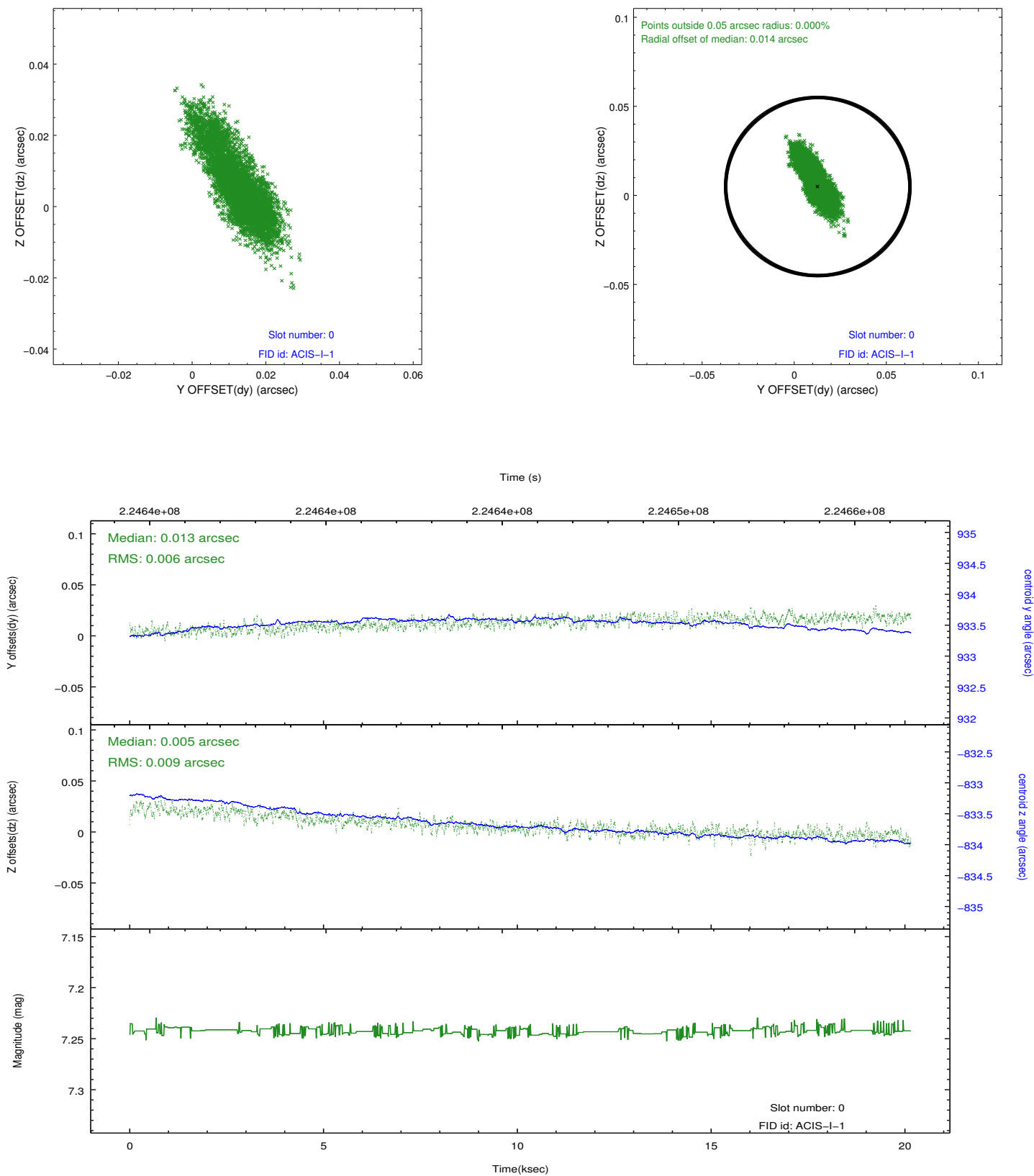


2.4.5 Slot 7

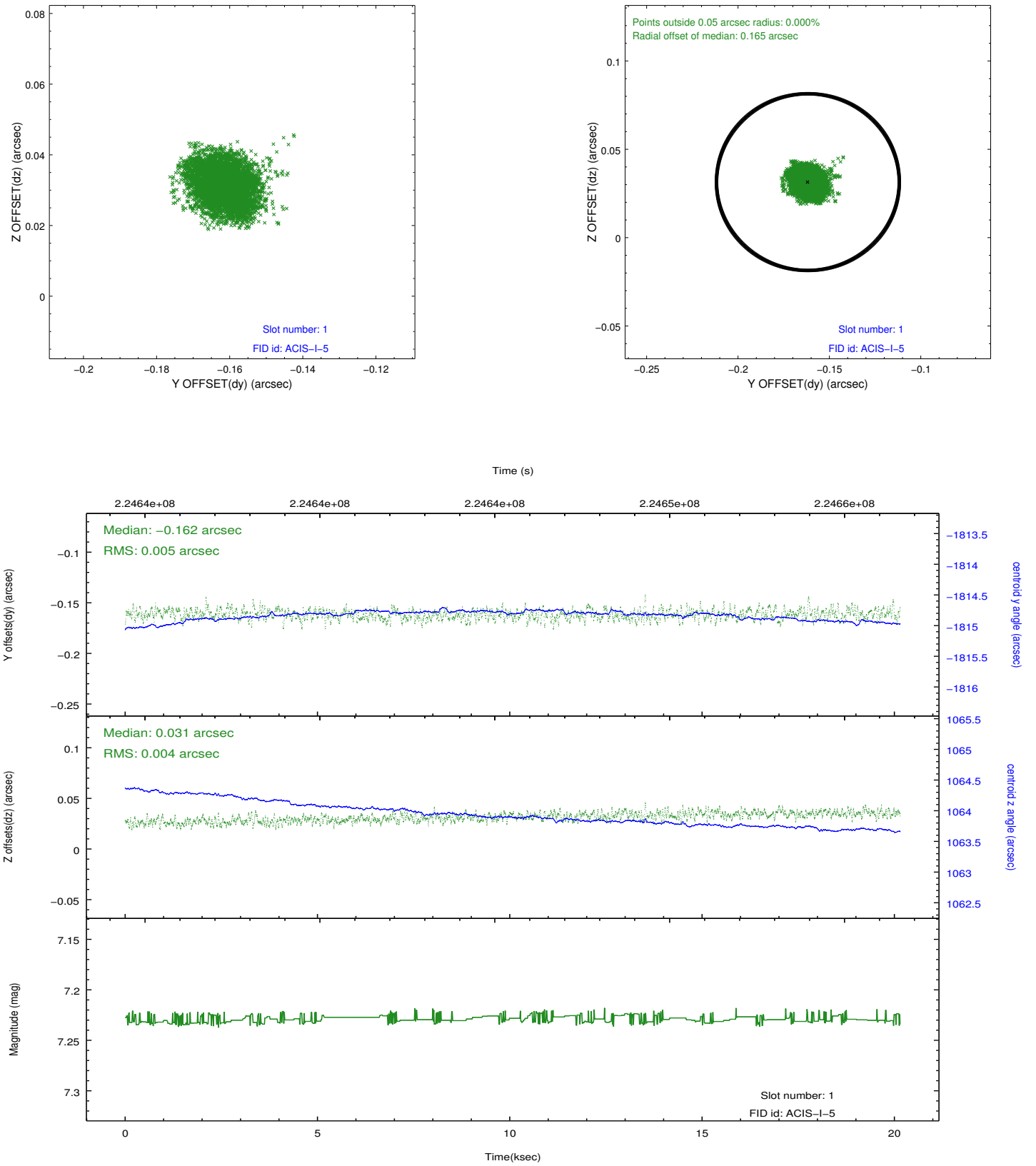


2.5 FID Slots

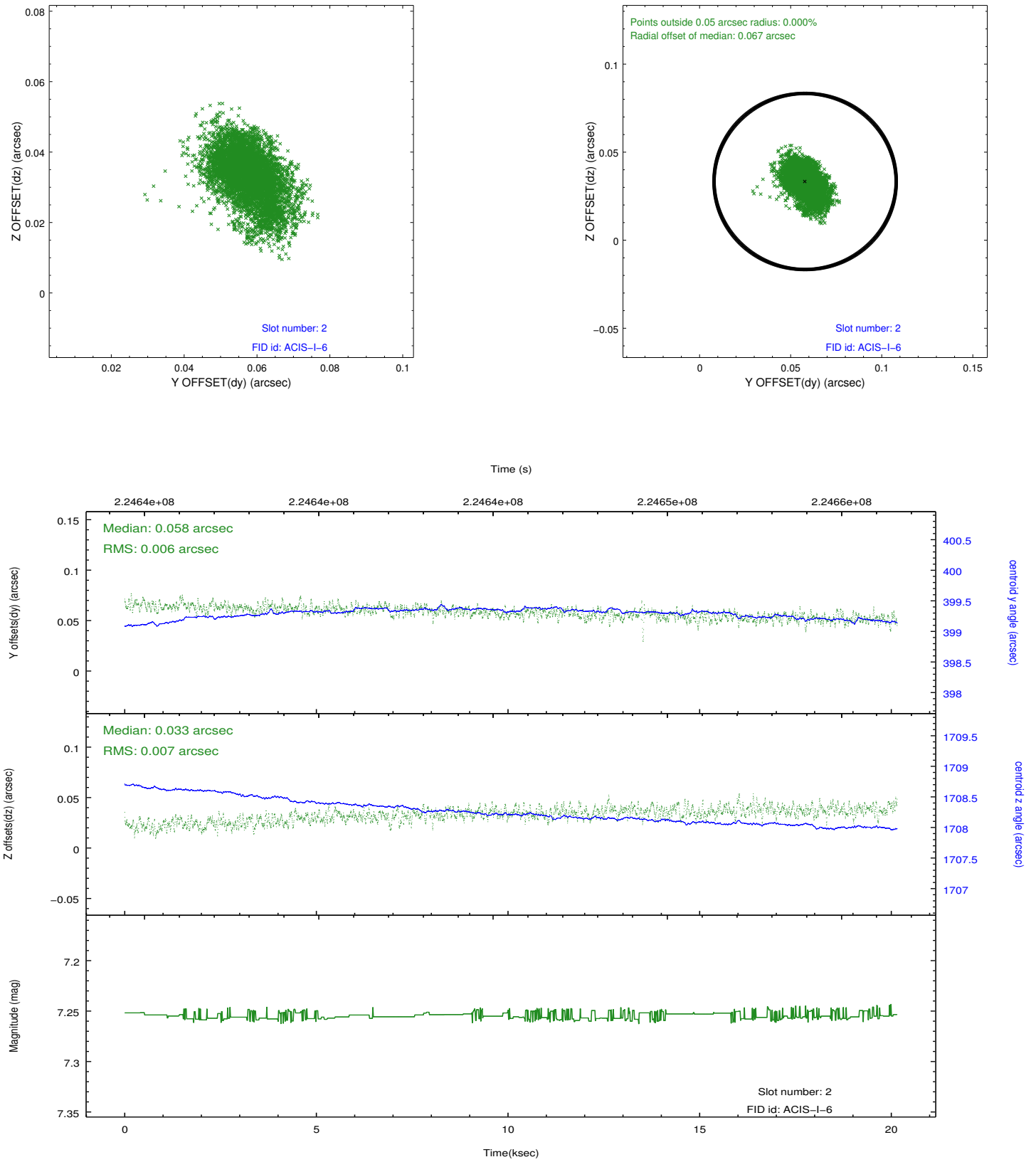
2.5.1 Slot 0



2.5.2 Slot 1



2.5.3 Slot 2



A Summary

A.1 Status

V&V Scientist	Jen Lauer
V&V Date (YYYY-MM-DD)	2013.01.09
V&V Edition	1
V&V Disposition and Status	OK
V&V Charge Time	20.14057

A.2 Comments