

V&V Reference Report

L2 ASCDS Version : 8.5.1

Observation 4978 - L2 Version 4
Chandra X-Ray Center

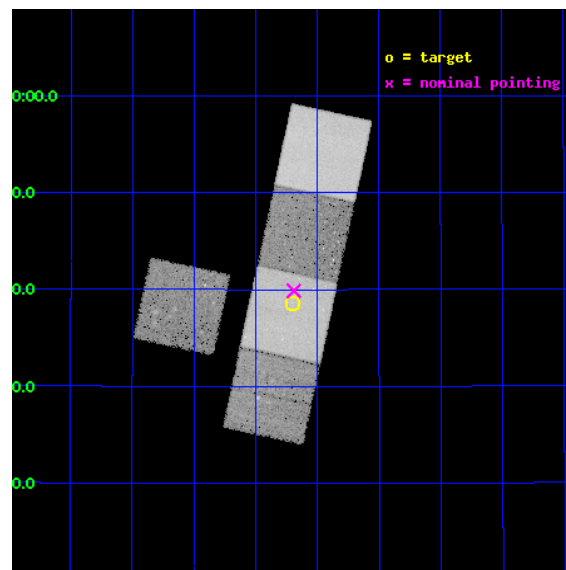
L2 Processing Date : Dec 17 2012

Contents

1	Front	2
2	OBI	3
2.1	OBI	3
2.1.1	Images	3
2.1.2	Bias	3
2.1.3	Parameters	4
2.1.4	Events	4
2.2	Compared Parameters	5
2.3	Aspect	6
2.4	Star Slots	9
2.4.1	Slot 3	9
2.4.2	Slot 4	10
2.4.3	Slot 5	11
2.4.4	Slot 6	12
2.4.5	Slot 7	13
2.5	FID Slots	14
2.5.1	Slot 0	14
2.5.2	Slot 1	15
2.5.3	Slot 2	16
A	Summary	17
A.1	Status	17
A.2	Comments	17

1 Front

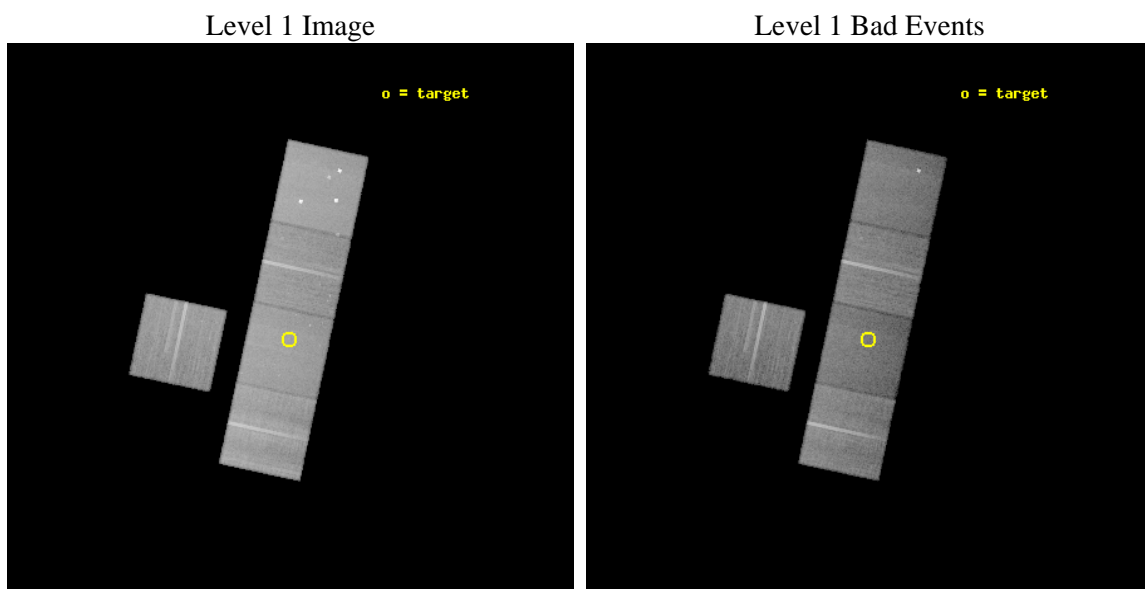
seq_num	800423	Sequence number
obs_id	4978	Observation id
title	What bends the lobes of WAT radio sources in isolated environments -- are they in fossil groups?	Proposal title
observer	Prof. Elizabeth Blanton	Principal investigator
object	1249+3038	Source name
dtcycle	0	
cycle	P	events from which exps? Prim/Second/Both
ra_targ	192.425833	Observer's specified target RA [deg]
dec_targ	30.643889	Observer's specified target Dec [deg]
ra_nom	192.42272727143	Nominal RA [deg]
dec_nom	30.664479462961	Nominal Dec [deg]
roll_nom	102.17053869143	Nominal Roll [deg]
revision	4	Processing version of data
ontime	35172.599932343	Sum of GTIs [s]
livetime	34713.044020535	Livetime [s]
ontime3	35169.458942086	Sum of GTIs [s]
ontime5	35172.599932343	Sum of GTIs [s]
ontime6	35172.599932343	Sum of GTIs [s]
ontime7	35172.599932343	Sum of GTIs [s]
ontime8	35163.177071124	Sum of GTIs [s]
l2events	299756	Number of level 2 events



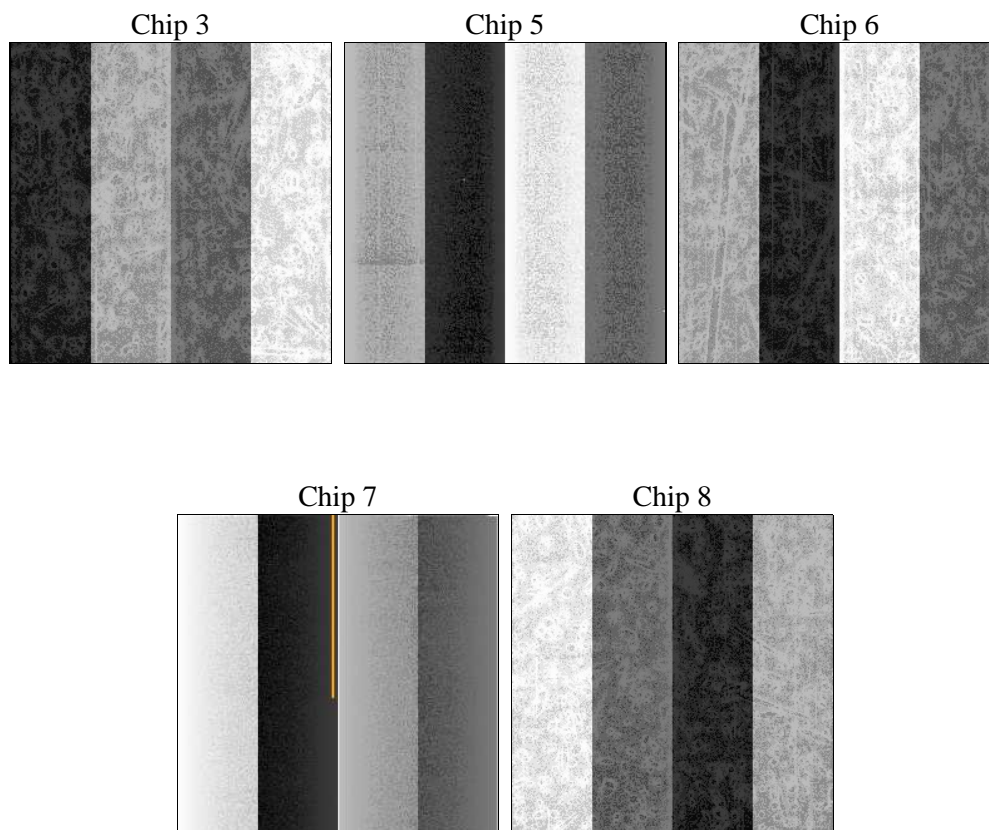
2 OBI

2.1 OBI

2.1.1 Images



2.1.2 Bias



2.1.3 Parameters

obi_num	1	Obi number	sched_exp_time	35000.000000	[s] Scheduled observation exposure time
ascdsver	8.5.1	Processing system revision	ontime	35172.599932343	Sum of GTIs [s]
caldsver	4.5.5	 	ontime3	35169.458942086	Sum of GTIs [s]
date	2012-12-17T07:11:50	Date and time of file creation	ontime5	35172.599932343	Sum of GTIs [s]
revision	4	Processing version of data	ontime6	35172.599932343	Sum of GTIs [s]
			ontime7	35172.599932343	Sum of GTIs [s]
			ontime8	35163.177071124	Sum of GTIs [s]
			l1events	1292821	Number of level 1 events

2.1.4 Events

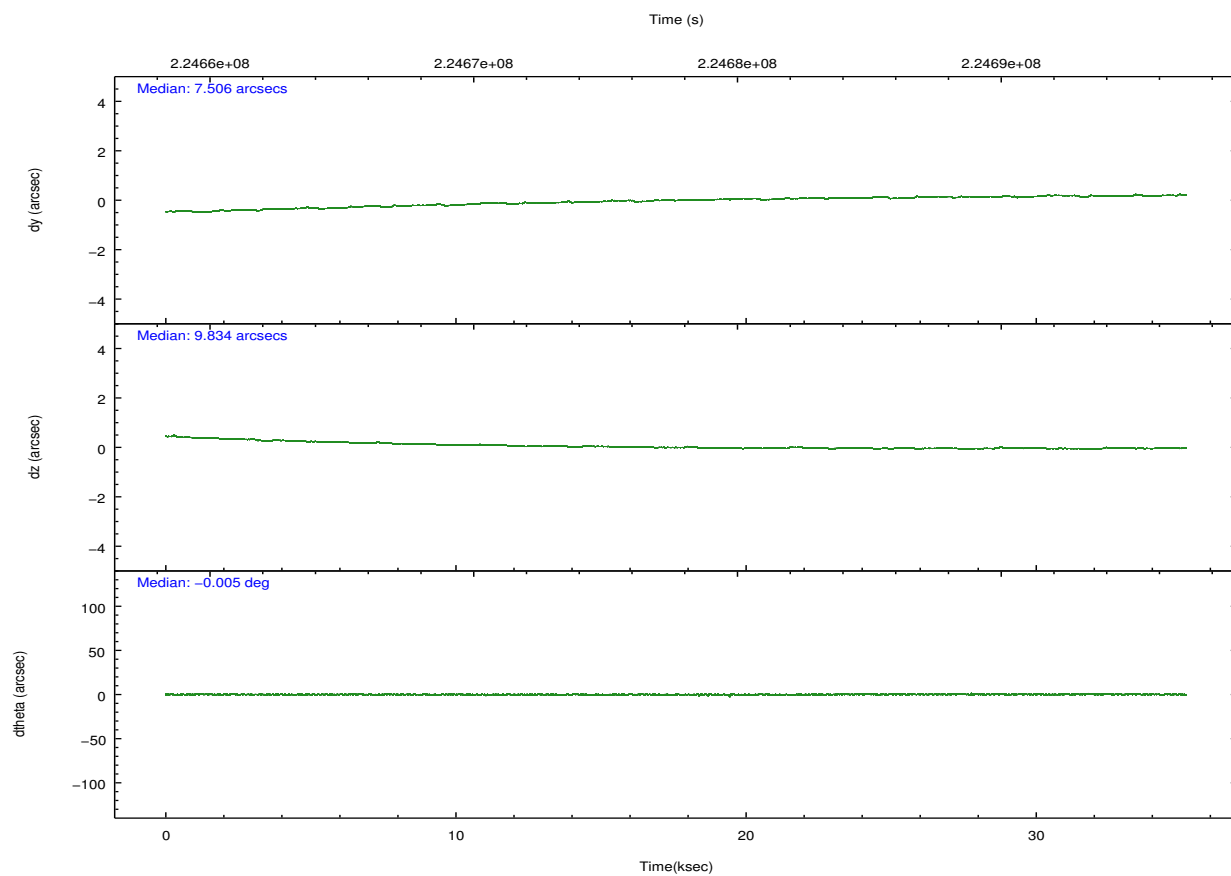
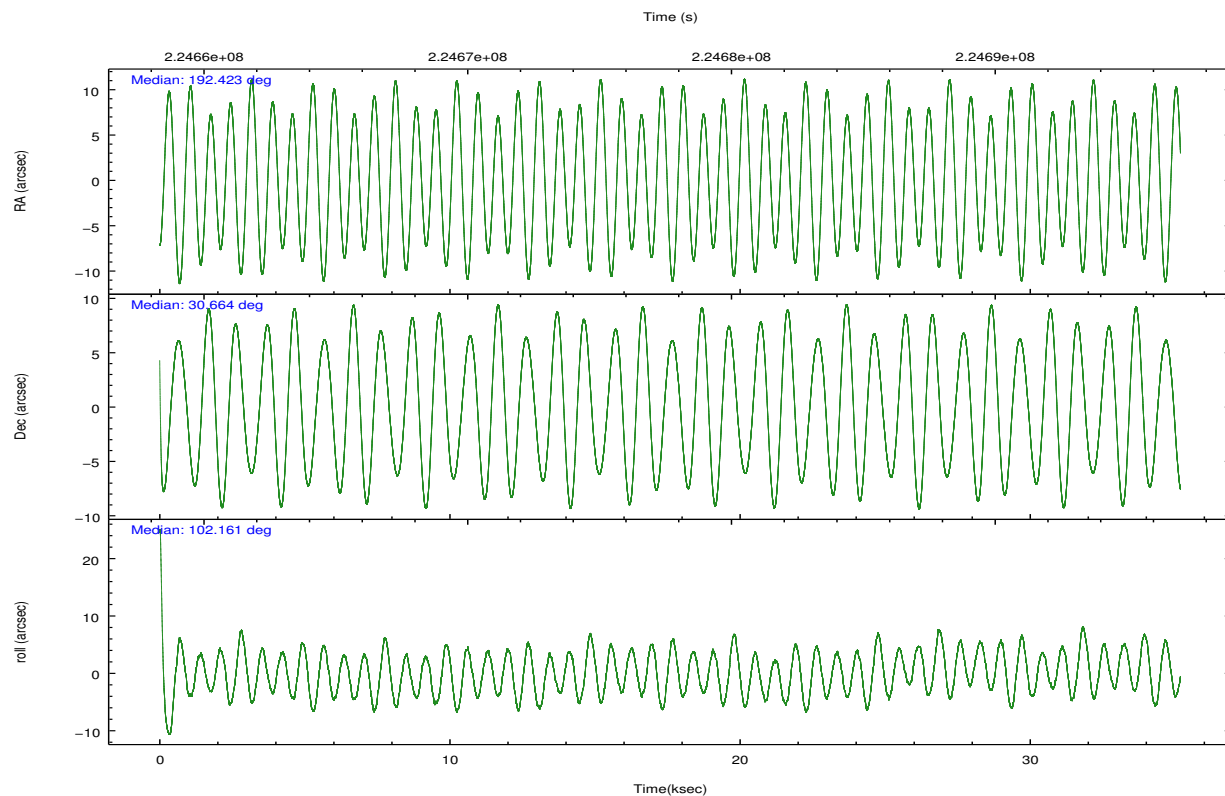
	ccd 3	ccd 5	ccd 6	ccd 7	ccd 8
level 1 events	213926	323329	224089	248579	282898
rejected events	194017	163265	201311	140637	218869
rejected %	90%	50%	89%	56%	77%

	ccd 3	ccd 5	ccd 6	ccd 7	ccd 8
grade 0 events	7500	29969	8410	9980	19604
	3%	9%	3%	4%	6%
grade 1 events	119	257	121	245	196
	0%	0%	0%	0%	0%
grade 2 events	4362	45906	5095	22665	14661
	2%	14%	2%	9%	5%
grade 3 events	2454	6697	2646	10457	7248
	1%	2%	1%	4%	2%
grade 4 events	2399	6284	2481	10463	6837
	1%	1%	1%	4%	2%
grade 5 events	8688	24946	9092	26246	12570
	4%	7%	4%	10%	4%
grade 6 events	3967	77355	4962	58467	18155
	1%	23%	2%	23%	6%
grade 7 events	184437	131915	191282	110056	203627
	86%	40%	85%	44%	71%

2.2 Compared Parameters

Parameter	Planned	Actual	Parameter	Planned	Actual
Instrument	ACIS	ACIS	Obspar format version number	7	7
Detector	ACIS-35678	ACIS-35678	Obspar file type	PREDICTED	ACTUAL
Grating	NONE	NONE	Obspar update status	NONE	UPDATED
Data mode	VFAINT	VFAINT	Number of optional ACIS chips dropped	0	0
Observation mode	POINTING	POINTING	On-chip summing requested	N	N
[deg] Pointing RA	192.444290	192.42272727143	Subarray requested	NONE	NONE
[deg] Pointing Dec	30.644533	30.66447946296099	Alternating exposures requested	N	N
[deg] Pointing Roll	102.002907	102.170538691429	[s] Primary exposure time	0.000000	3.1
[mm] SIM focus pos	-0.684267	-0.6828225247311905			
[mm] SIM defocus	0	0.001444936568705701			
[mm] SIM translation stage pos	-190.132523	-190.1425803651734			
[mm] SIM translation stage offset	0	0.01005778216563158			
[s] Observation start time (MET)	224660256.184000	224658603.13058			
Observation start date	2005-02-13T05:36:32	2005-02-13T05:10:03			
[s] Observation end time (MET)	224695256.184000	224696533.2573			
Observation end date	2005-02-13T15:19:52	2005-02-13T15:42:13			
Read mode	TIMED	TIMED			

2.3 Aspect

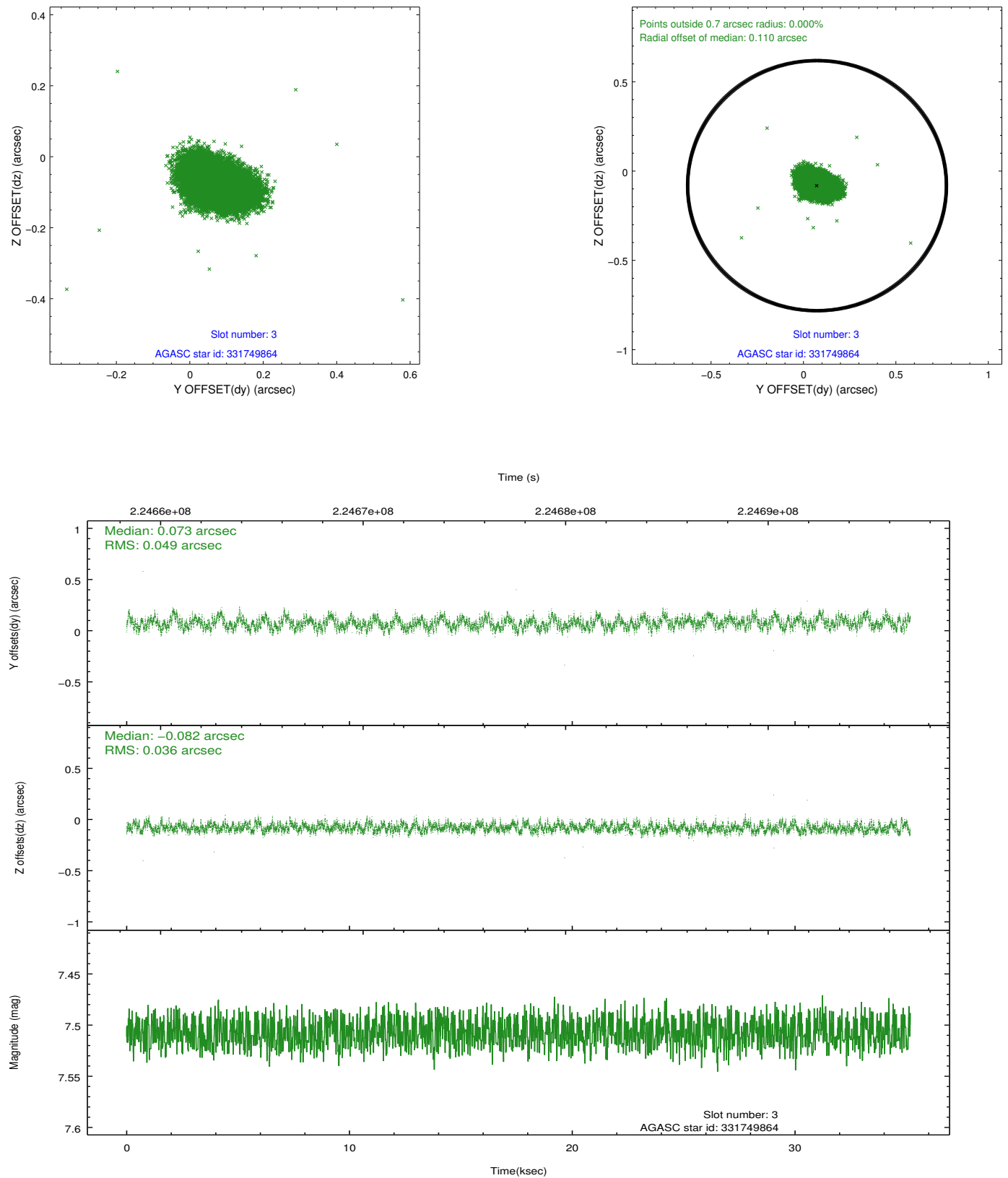


Slot Statistics

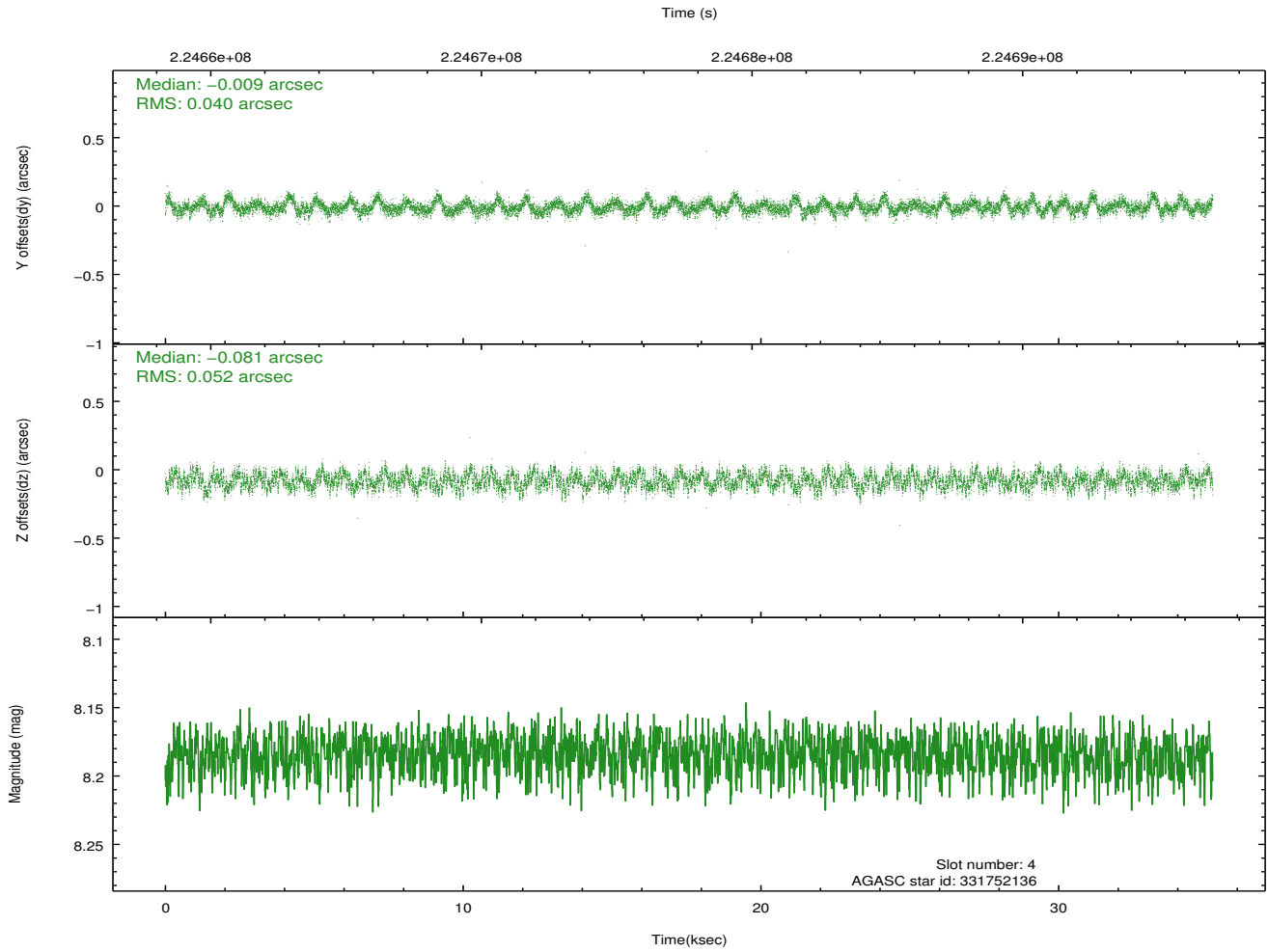
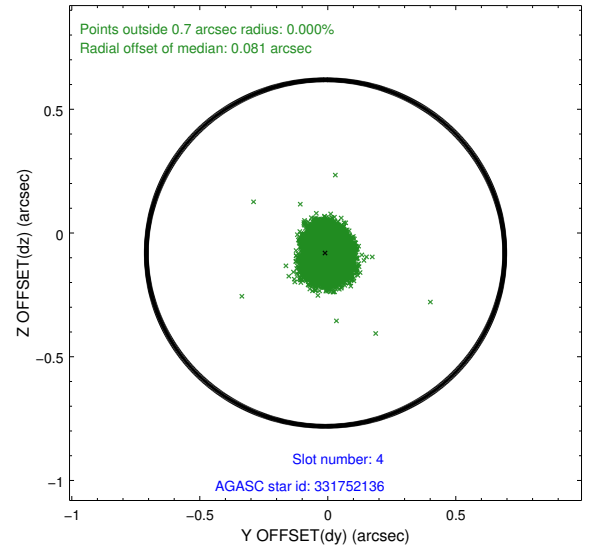
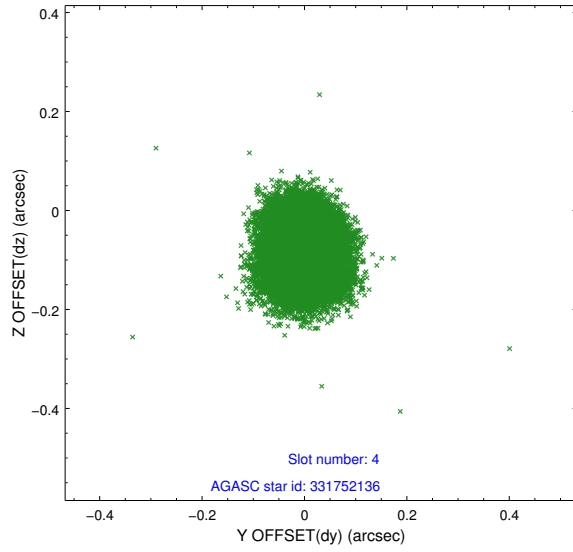
slot	status	id	mag	n_pts	med_dy	med_dz	dr1	dr2	ra	dec	mean_y	mean_z
0	FID	ACIS-S-2	7.10	8581	-0.047	-0.032	0.013	0.019	0.000000	0.000000	-760.23	-1731.14
1	FID	ACIS-S-4	7.21	8581	0.103	0.033	0.012	0.020	0.000000	0.000000	2153.14	177.43
2	FID	ACIS-S-5	7.24	8582	-0.086	0.009	0.010	0.018	0.000000	0.000000	-1813.10	171.04
3	GUIDE	331749864	7.51	17163	0.073	-0.082	0.065	0.105	192.063638	30.396140	-626.86	1341.82
4	GUIDE	331752136	8.18	17161	-0.009	-0.081	0.071	0.110	192.091746	30.767179	660.54	974.99
5	GUIDE	331753984	9.89	17145	0.127	-0.090	0.185	0.319	191.969407	30.821639	932.06	1303.00
6	GUIDE	331744120	8.93	17145	-0.059	0.245	0.101	0.163	193.140390	31.116277	1222.17	-2452.56
7	GUIDE	331748496	9.38	17094	-0.121	-0.012	0.110	0.181	191.833821	31.213608	2398.51	1411.85

2.4 Star Slots

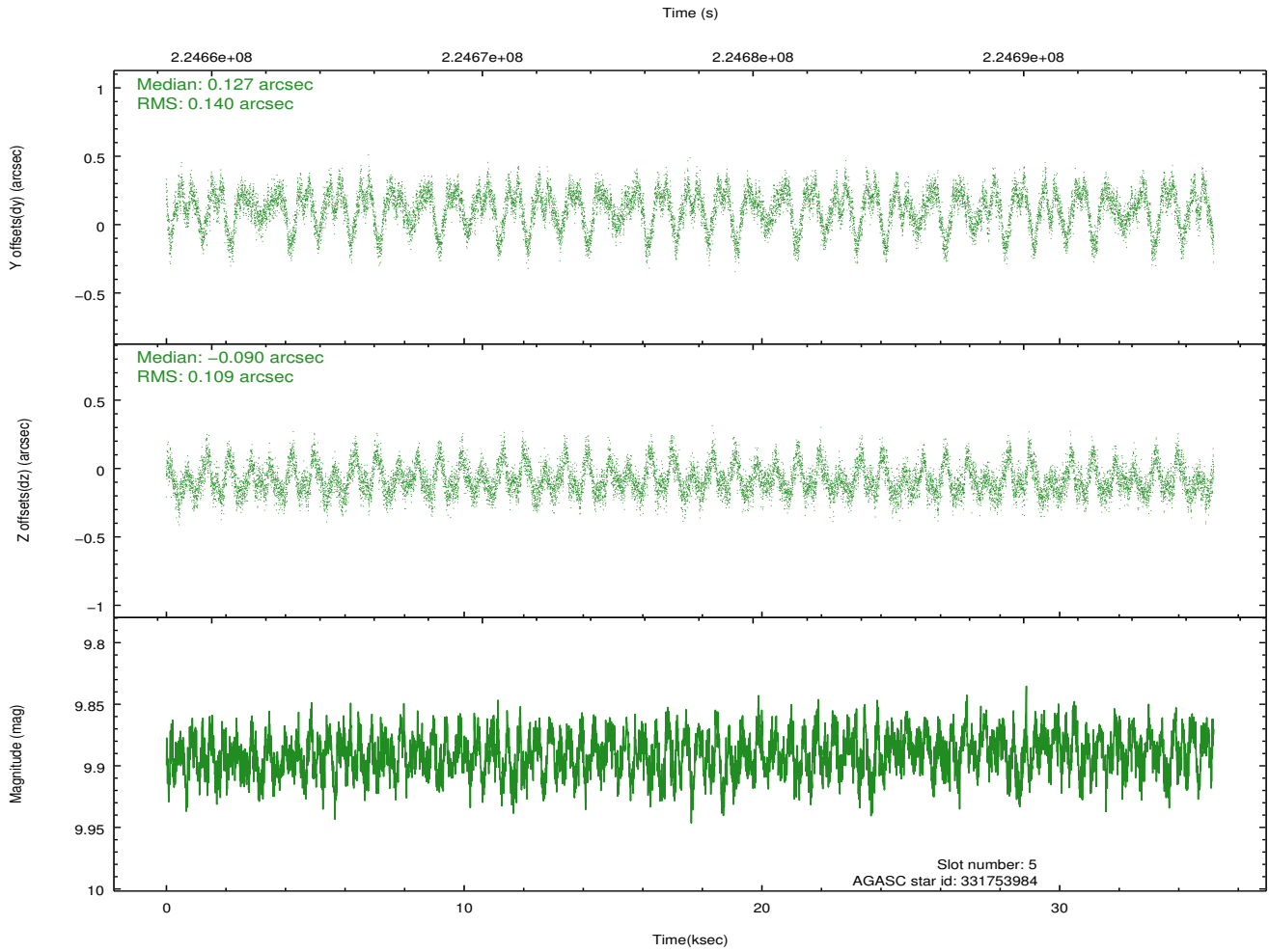
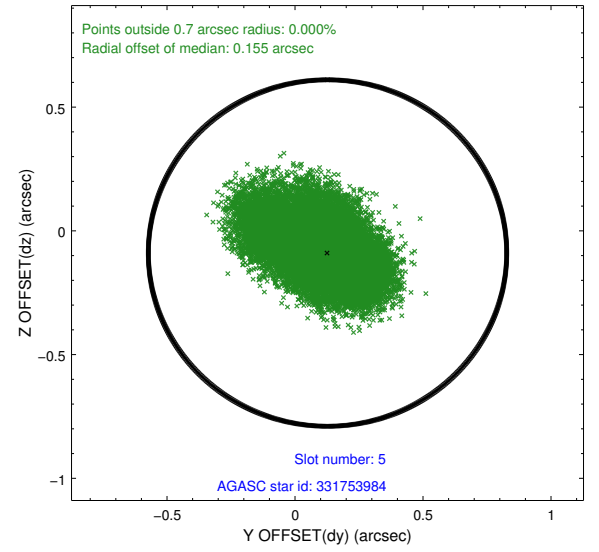
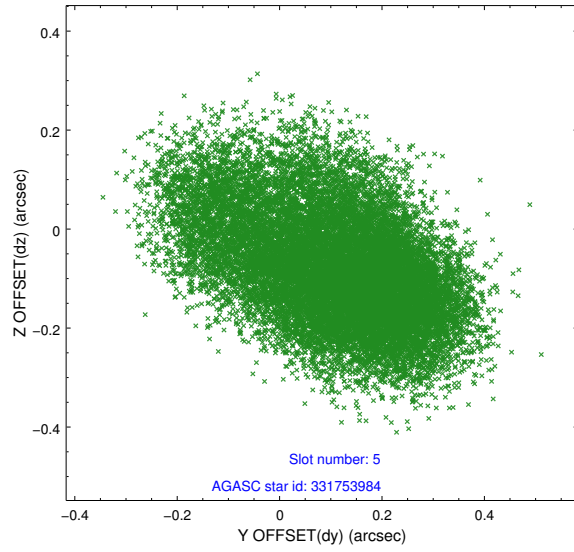
2.4.1 Slot 3



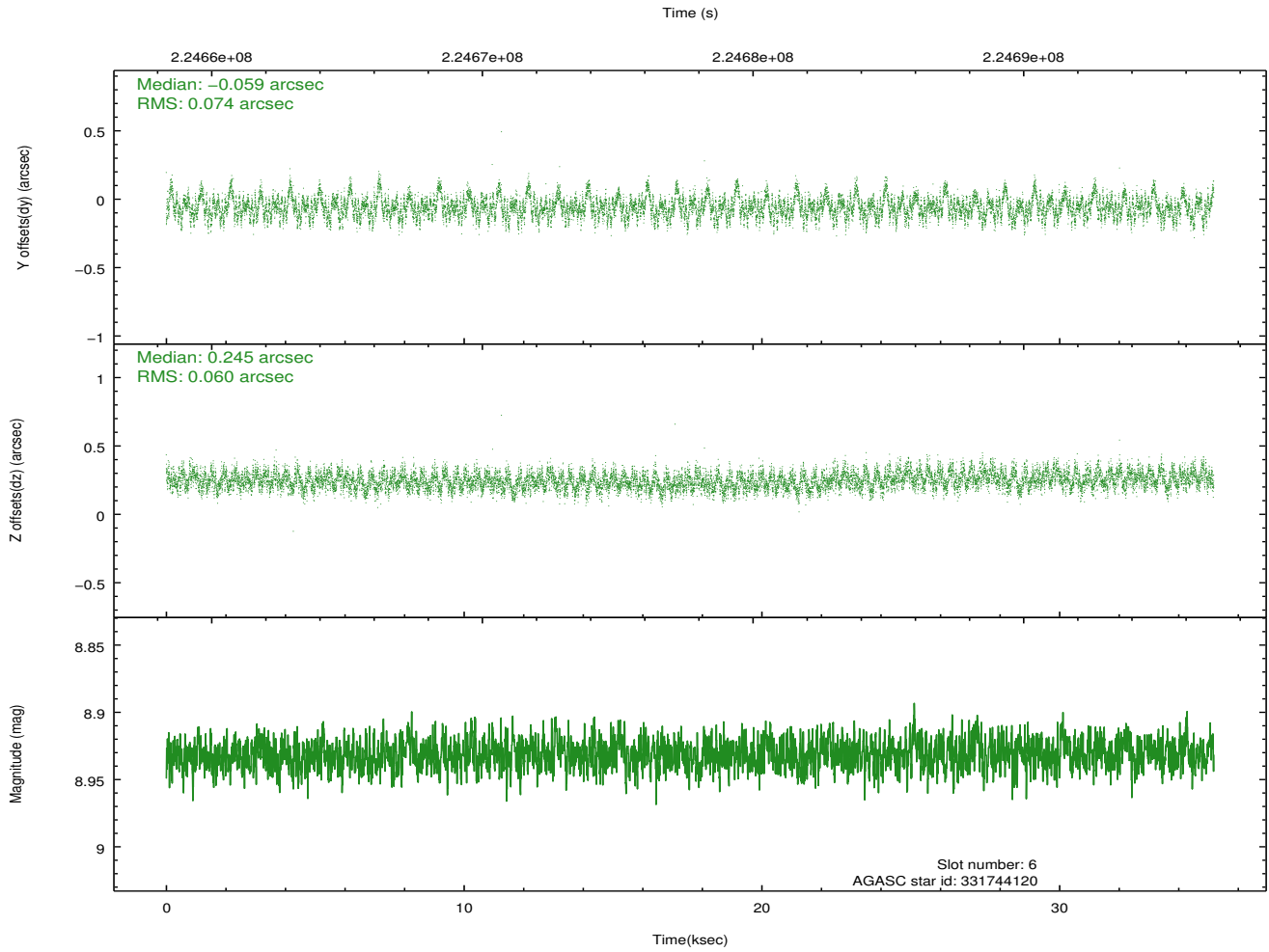
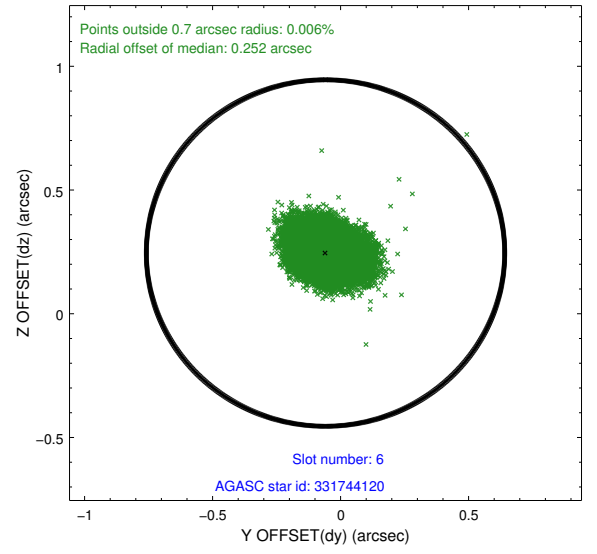
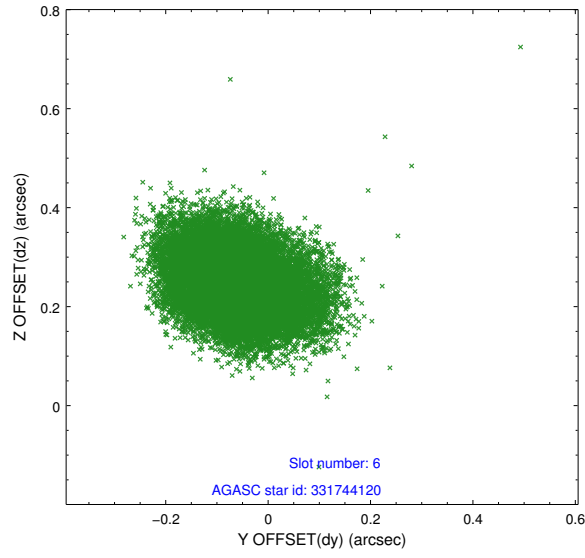
2.4.2 Slot 4



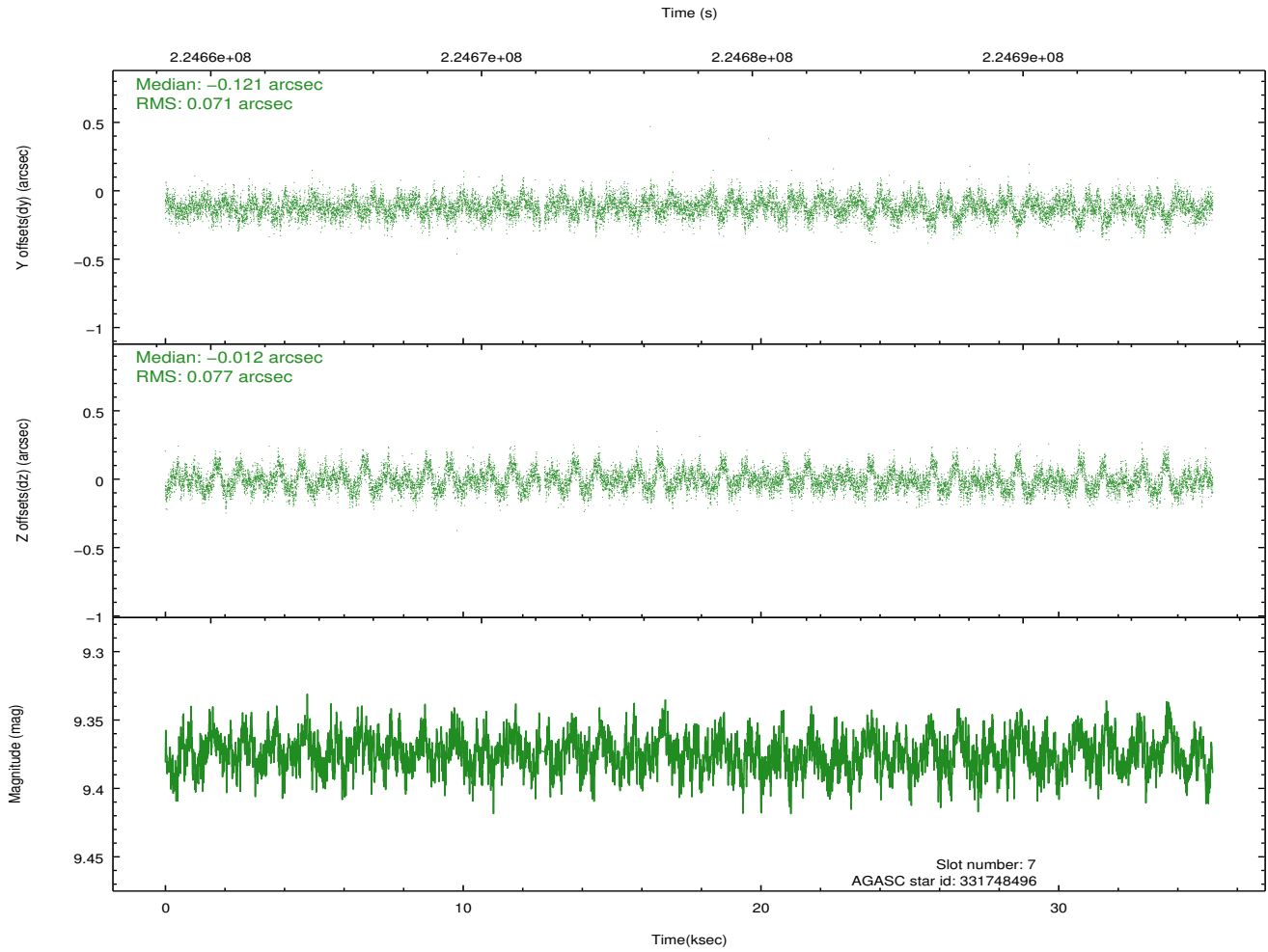
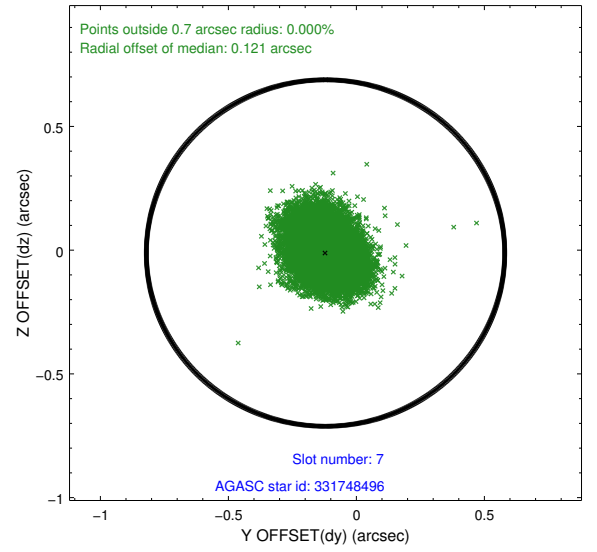
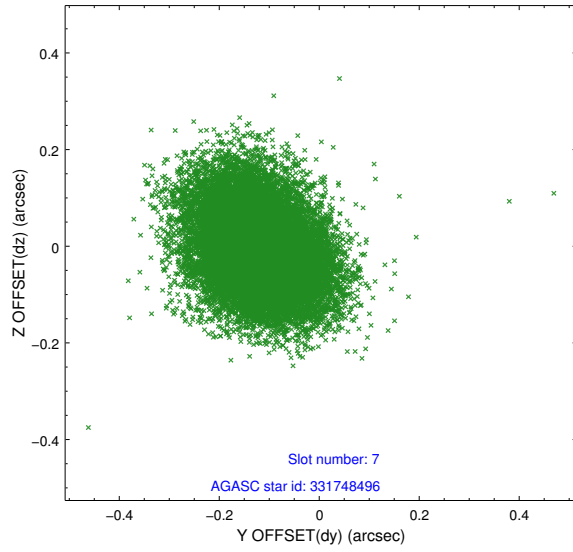
2.4.3 Slot 5



2.4.4 Slot 6

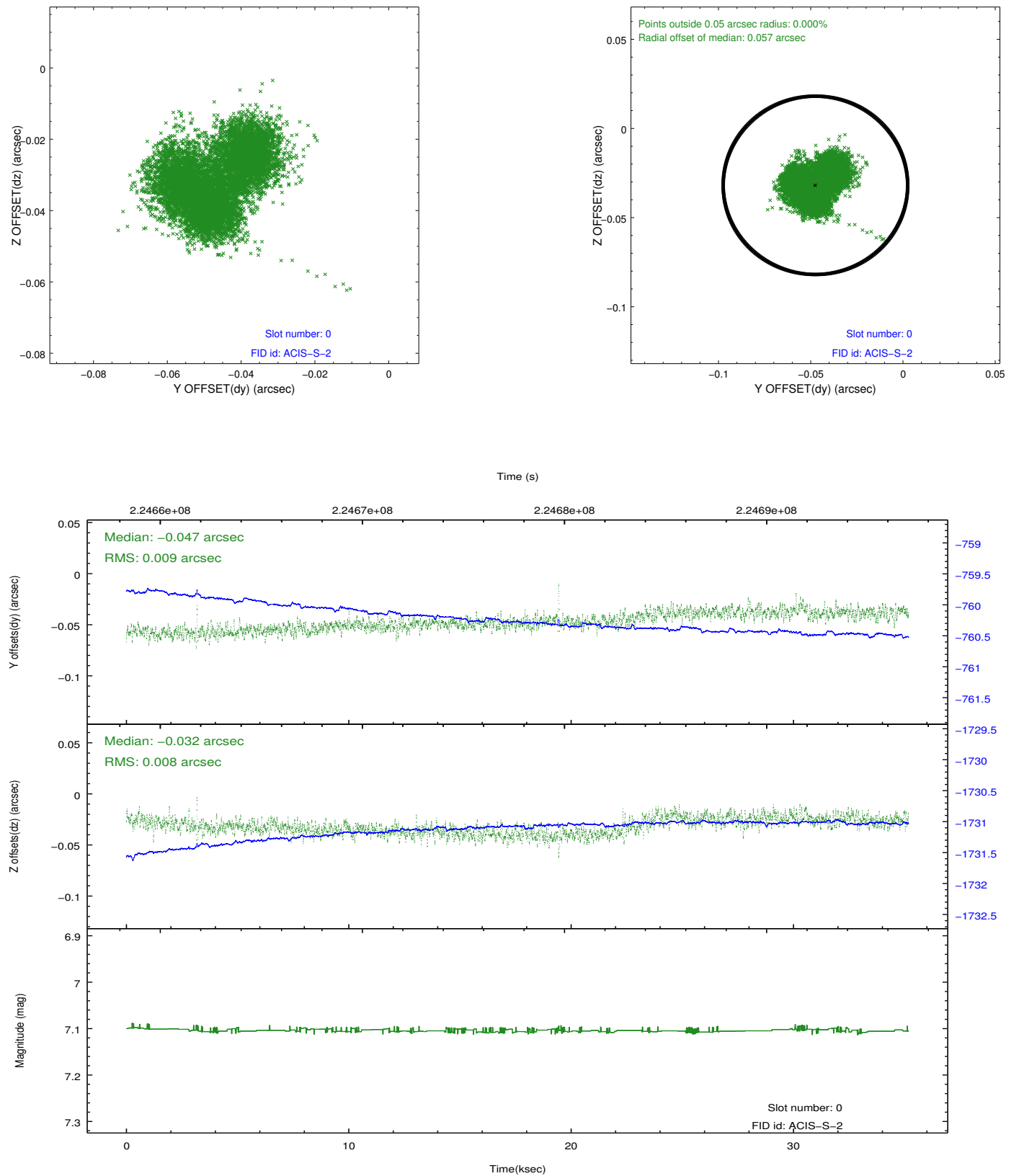


2.4.5 Slot 7

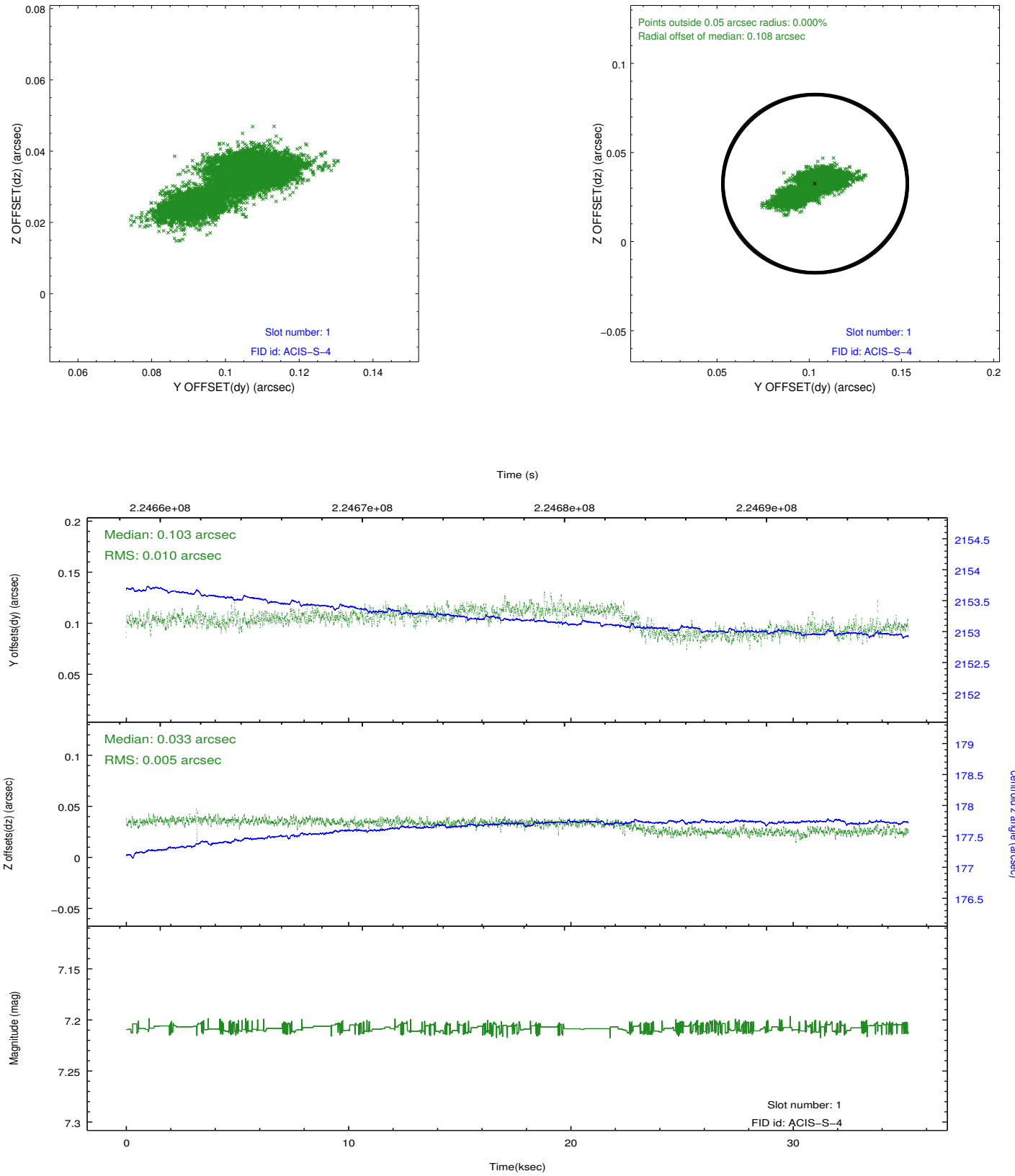


2.5 FID Slots

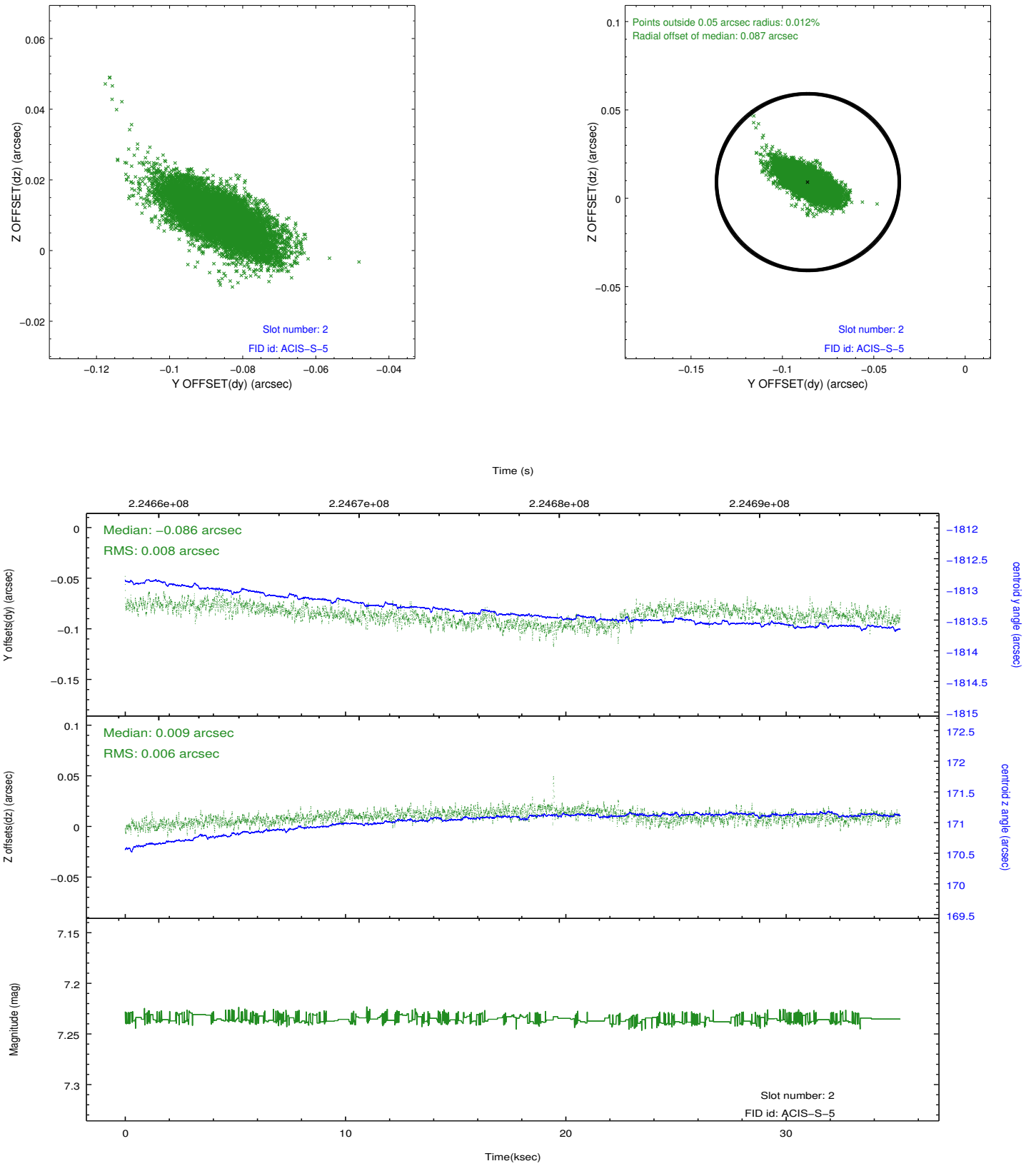
2.5.1 Slot 0



2.5.2 Slot 1



2.5.3 Slot 2



A Summary

A.1 Status

V&V Scientist	Jen Lauer
V&V Date (YYYY-MM-DD)	2013.01.09
V&V Edition	1
V&V Disposition and Status	OK
V&V Charge Time	35.17259

A.2 Comments