

V&V Reference Report

L2 ASCDS Version : 7.6.11.10

Observation 4977 - L2 Version 4
Chandra X-Ray Center

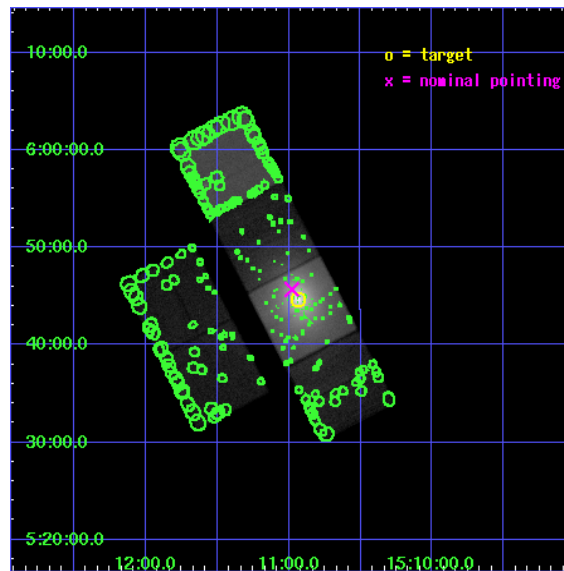
L2 Processing Date : Feb 10 2009

Contents

1	Front	2
2	OBI	3
2.1	OBI	3
2.1.1	Images	3
2.1.2	Bias	3
2.1.3	Parameters	4
2.1.4	Events	4
2.2	Compared Parameters	5
2.3	Aspect	6
2.4	Star Slots	9
2.4.1	Slot 3	9
2.4.2	Slot 4	10
2.4.3	Slot 5	11
2.4.4	Slot 6	12
2.4.5	Slot 7	13
2.5	FID Slots	14
2.5.1	Slot 0	14
2.5.2	Slot 1	15
2.5.3	Slot 2	16
3	Point Sources	17
A	Summary	18
A.1	Status	18
A.2	Comments	18

1 Front

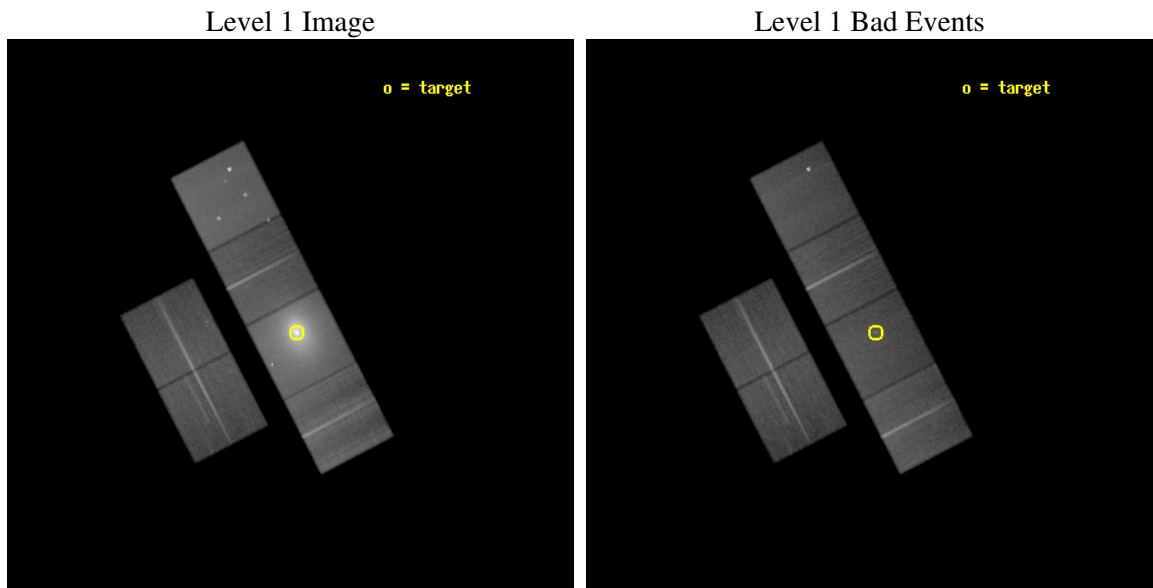
seq_num	800422
obs_id	4977
title	Probing the Complex Structure in the Core of Abell 2029
observer	Dr. Tracy Clarke
object	Abell 2029
dtcycle	0
cycle	P
ra_targ	227.73375
dec_targ	5.743889
ra_nom	227.74483554459
dec_nom	5.7614535712102
roll_nom	62.644445315925
revision	4
ontime	78905.271983743
livetime	77906.125918834
ontime2	78918.235884666
ontime3	78914.994864553
ontime5	78918.235844851
ontime6	78914.99488458
ontime7	78905.271983743
ontime8	78908.512993783
l2events	1873077



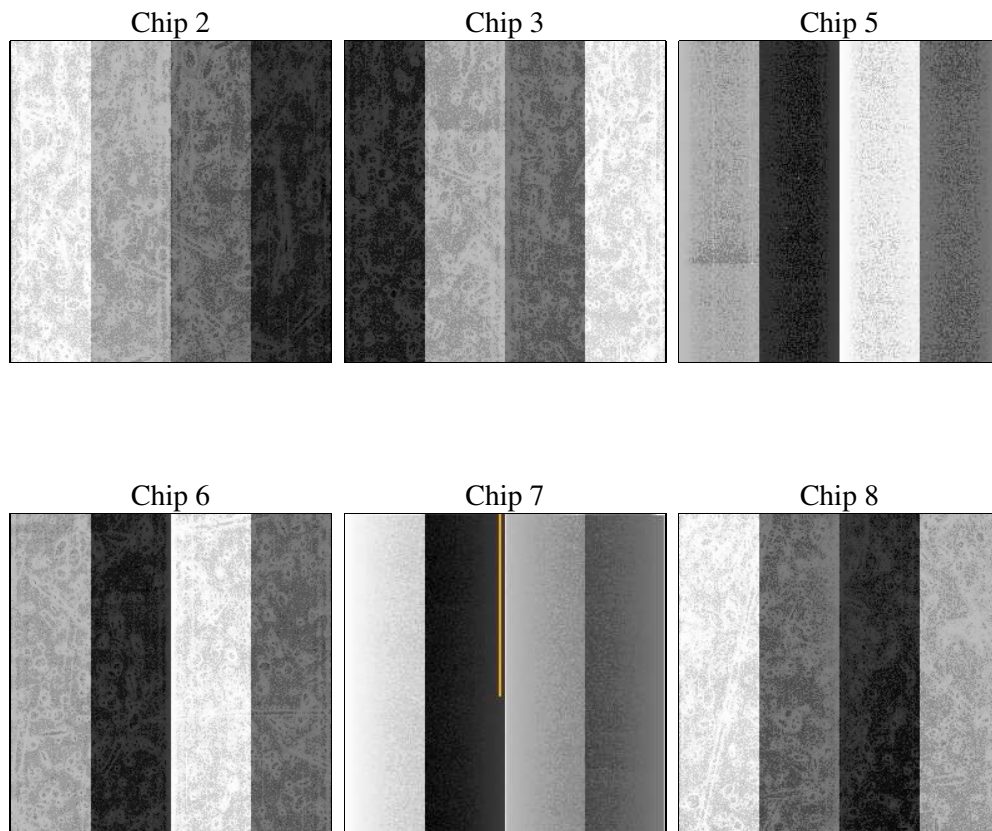
2 OBI

2.1 OBI

2.1.1 Images



2.1.2 Bias



2.1.3 Parameters

obi_num	0
ascdsver	7.6.11.10
caldbver	3.5.1
date	2009-02-10T21:54:26
revision	4

sched_exp_time	79000.000000
ontime	78905.271983743
ontime2	78918.235884666
ontime3	78914.994864553
ontime5	78918.235844851
ontime6	78914.99488458
ontime7	78905.271983743
ontime8	78908.512993783
l1events	4410634

2.1.4 Events

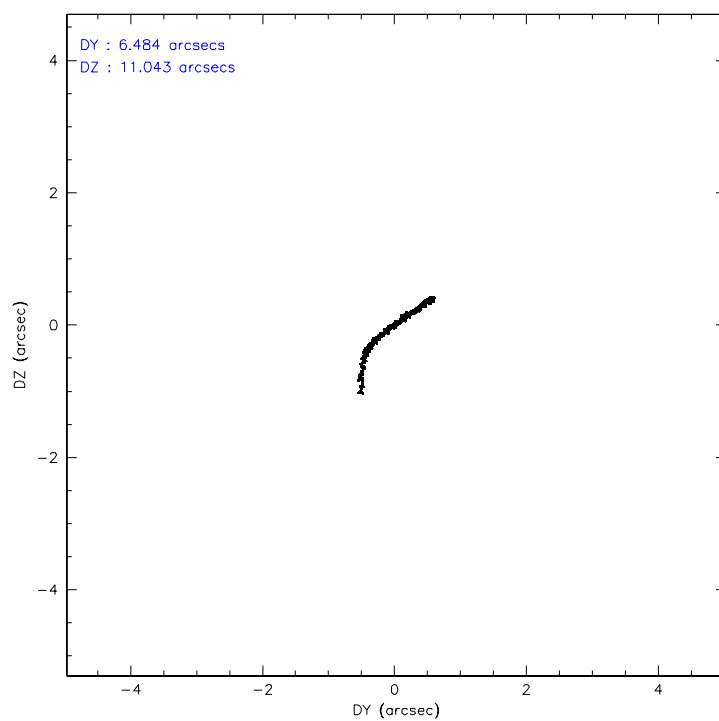
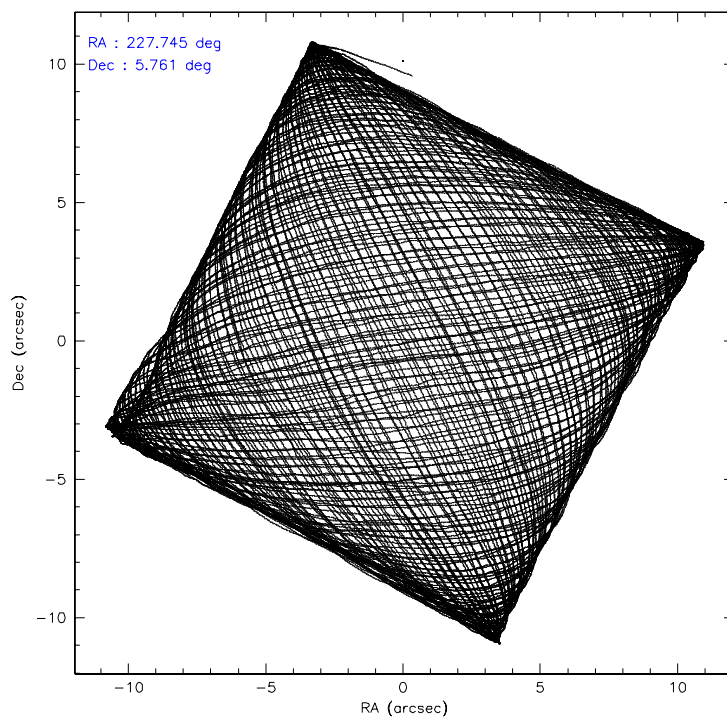
	ccd 2	ccd 3	ccd 5	ccd 6	ccd 7	ccd 8
level 1 events	462508	442430	689790	517296	1657550	641060
rejected events	397088	378181	373293	395814	364079	449842
rejected %	85%	85%	54%	76%	21%	70%

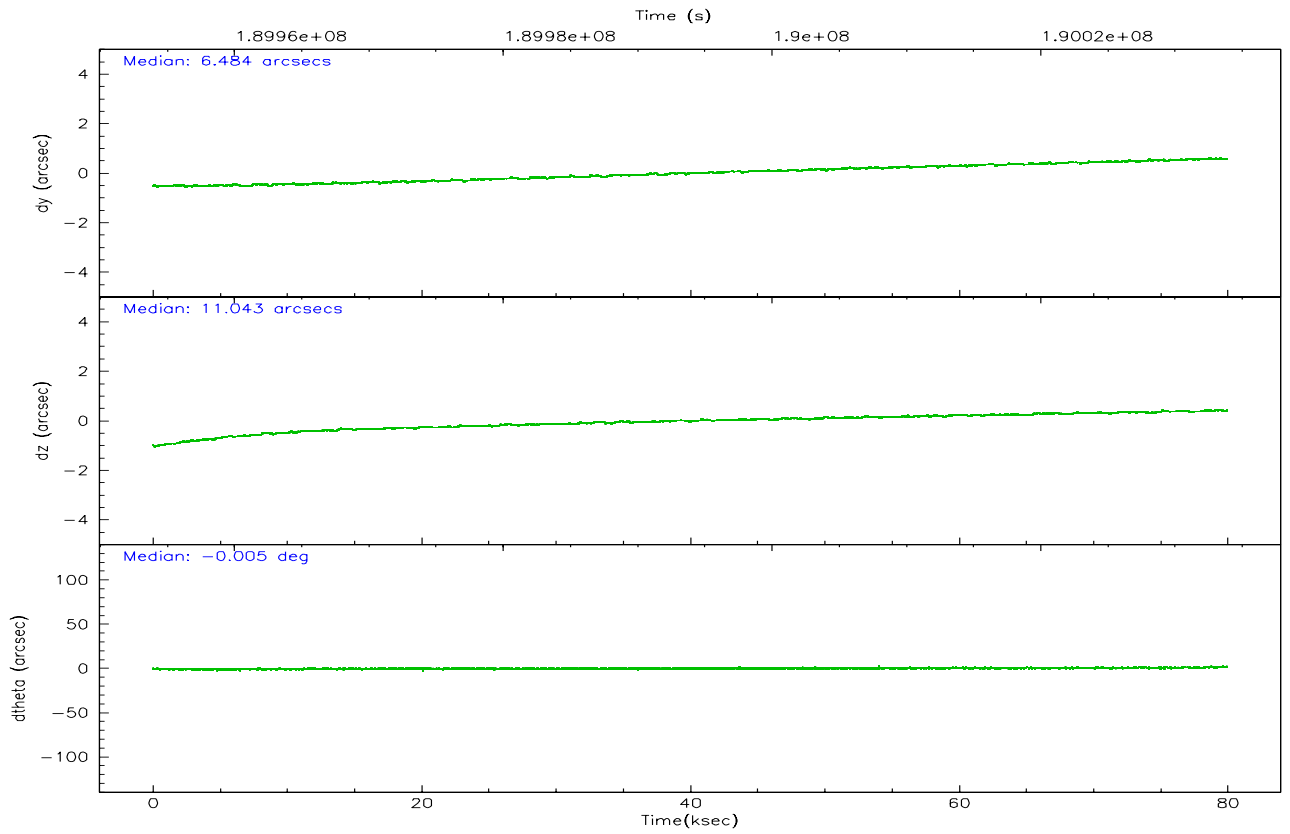
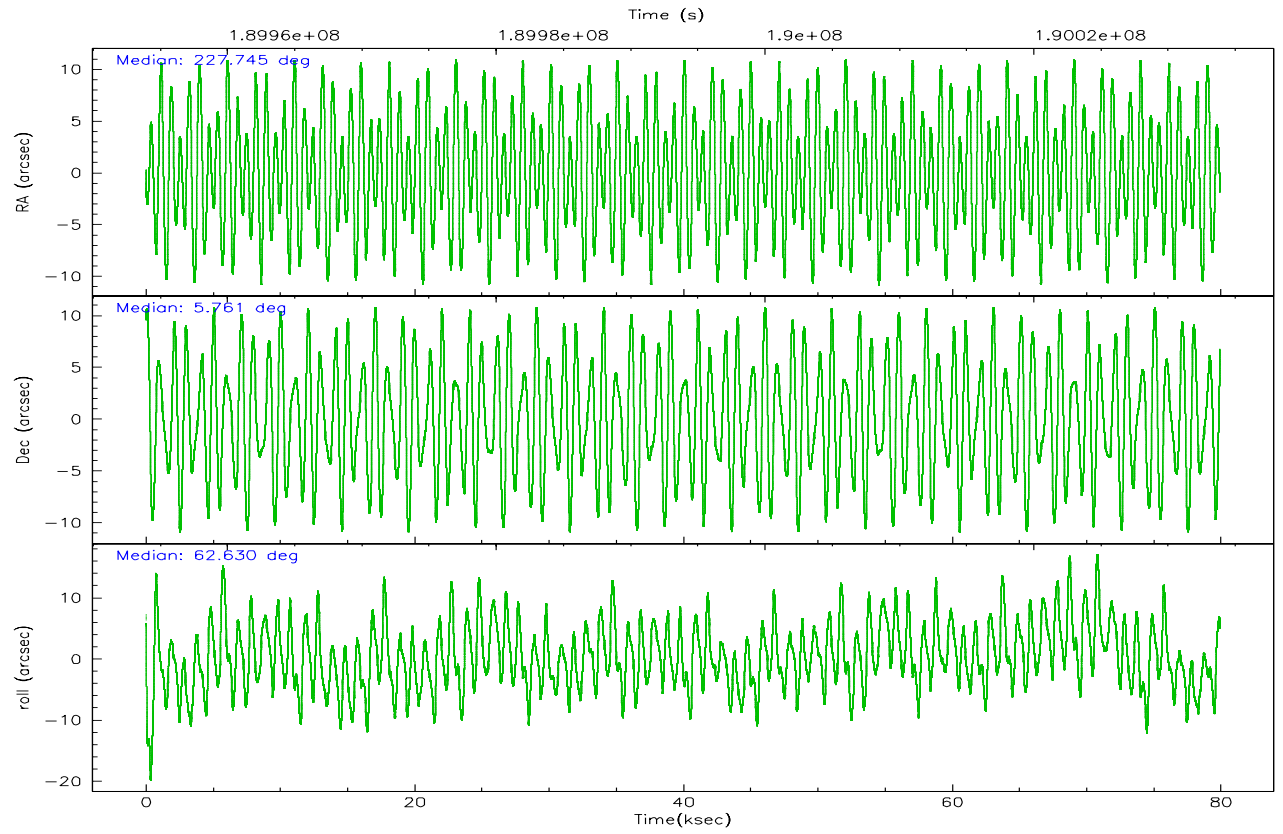
	ccd 2	ccd 3	ccd 5	ccd 6	ccd 7	ccd 8
grade 0 events	31682	31011	36530	75068	347112	72705
	6%	7%	5%	14%	20%	11%
grade 1 events	322	282	807	378	1094	562
	0%	0%	0%	0%	0%	0%
grade 2 events	12944	11978	94894	18806	323593	33530
	2%	2%	13%	3%	19%	5%
grade 3 events	5320	5327	14343	7396	143573	23880
	1%	1%	2%	1%	8%	3%
grade 4 events	5604	5476	12493	6939	141283	22098
	1%	1%	1%	1%	8%	3%
grade 5 events	18033	19617	54817	20781	64129	27675
	3%	4%	7%	4%	3%	4%
grade 6 events	9910	10492	158401	13336	338499	39250
	2%	2%	22%	2%	20%	6%
grade 7 events	378693	358247	317505	374592	298267	421360
	81%	80%	46%	72%	17%	65%

2.2 Compared Parameters

Parameter	Planned	Actual	Parameter	Planned	Actual
Instrument	ACIS	ACIS	Obspar format version number	6	6
Detector	ACIS-235678	ACIS-235678	Obspar file type	PREDICTED	ACTUAL
Grating	NONE	NONE	Obspar update status	OVERRIDE	OVERRIDE
Data mode	FAINT	FAINT	Number of optional ACIS chips dropped	0	0
Observation mode	POINTING	POINTING	On-chip summing requested	N	N
Pointing RA	227.7448355445945	227.7448355445945	Subarray requested	NONE	NONE
Pointing Dec	5.761453571210182	5.761453571210182	Alternating exposures requested	N	N
Pointing Roll	62.64444531592522	62.64444531592522	Primary exposure time	3.2	3.2
SIM focus pos (mm)	-0.68282252473119	-0.68282252473119			
SIM defocus (mm)	0.001444942264670734	0.001444942264670734			
SIM translation stage pos (mm)	-190.1400660499	-190.1400660499			
SIM translation stage offset (mm)	0.007542945932812017	0.007542945932812017			
Observation start time	189953929.988509	189953929.988509			
Observation start date	2004-01-08T13:13:00	2004-01-08T12:58:49			
Observation end time	190033874.184	190033874.184			
Observation end date	2004-01-09T11:10:10	2004-01-09T11:11:14			
Read mode	TIMED	TIMED			

2.3 Aspect



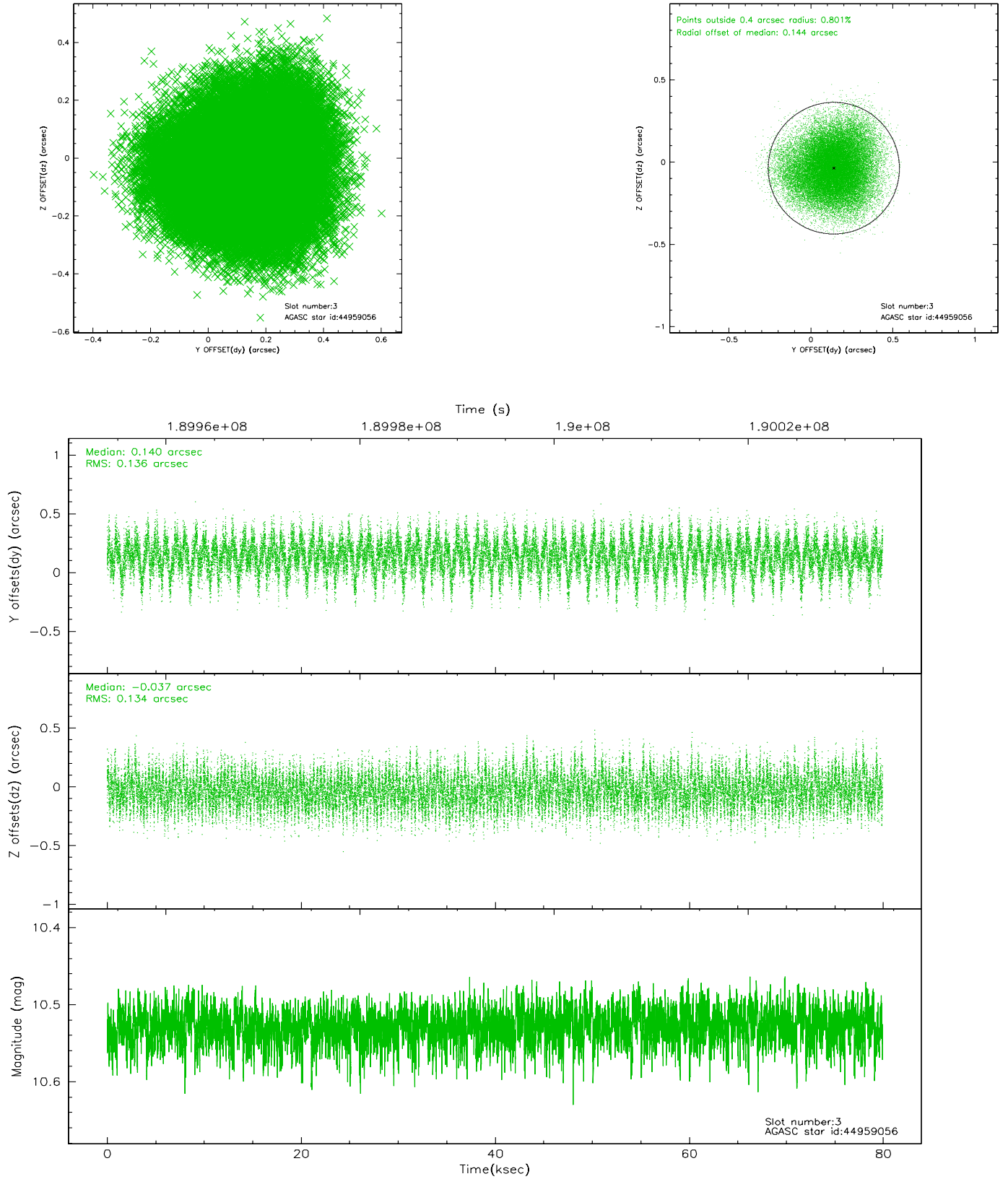


Slot Statistics

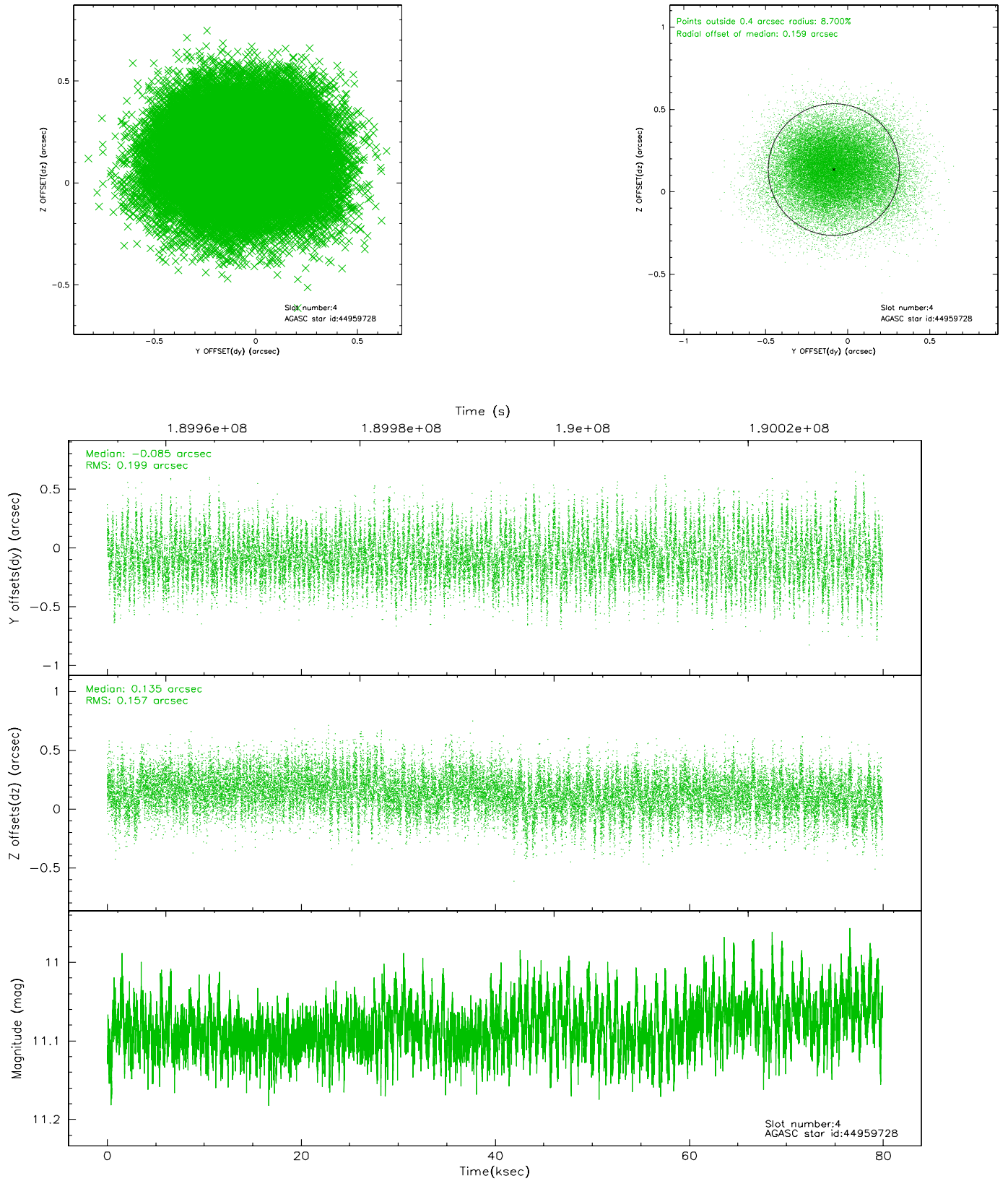
slot	status	id	mag	n_pts	med_dy	med_dz	dr1	dr2	ra	dec	mean_y	mean_z
0	FID	ACIS-S-1	7.18	19490	-0.002	-0.068	0.022	0.046	0.000000	0.000000	936.80	-1727.96
1	FID	ACIS-S-4	7.20	19484	0.041	0.051	0.011	0.028	0.000000	0.000000	2154.22	176.38
2	FID	ACIS-S-5	7.23	19489	-0.067	0.029	0.014	0.023	0.000000	0.000000	-1812.22	169.89
3	GUIDE	44959056	10.53	38945	0.140	-0.037	0.206	0.327	227.388506	5.331015	-1879.90	467.69
4	GUIDE	44959728	11.08	38528	-0.085	0.135	0.270	0.443	227.997143	5.279326	-1037.01	-1552.99
5	GUIDE	44961784	10.47	38913	-0.137	0.166	0.187	0.294	228.123885	5.352388	-593.98	-1833.91
6	GUIDE	44966344	6.12	38984	-0.053	-0.269	0.131	0.208	226.918015	5.498039	-2124.35	2240.93
7	GUIDE	45482024	11.16	19446	0.264	-0.017	0.273	0.495	227.558324	5.662297	-540.93	478.71

2.4 Star Slots

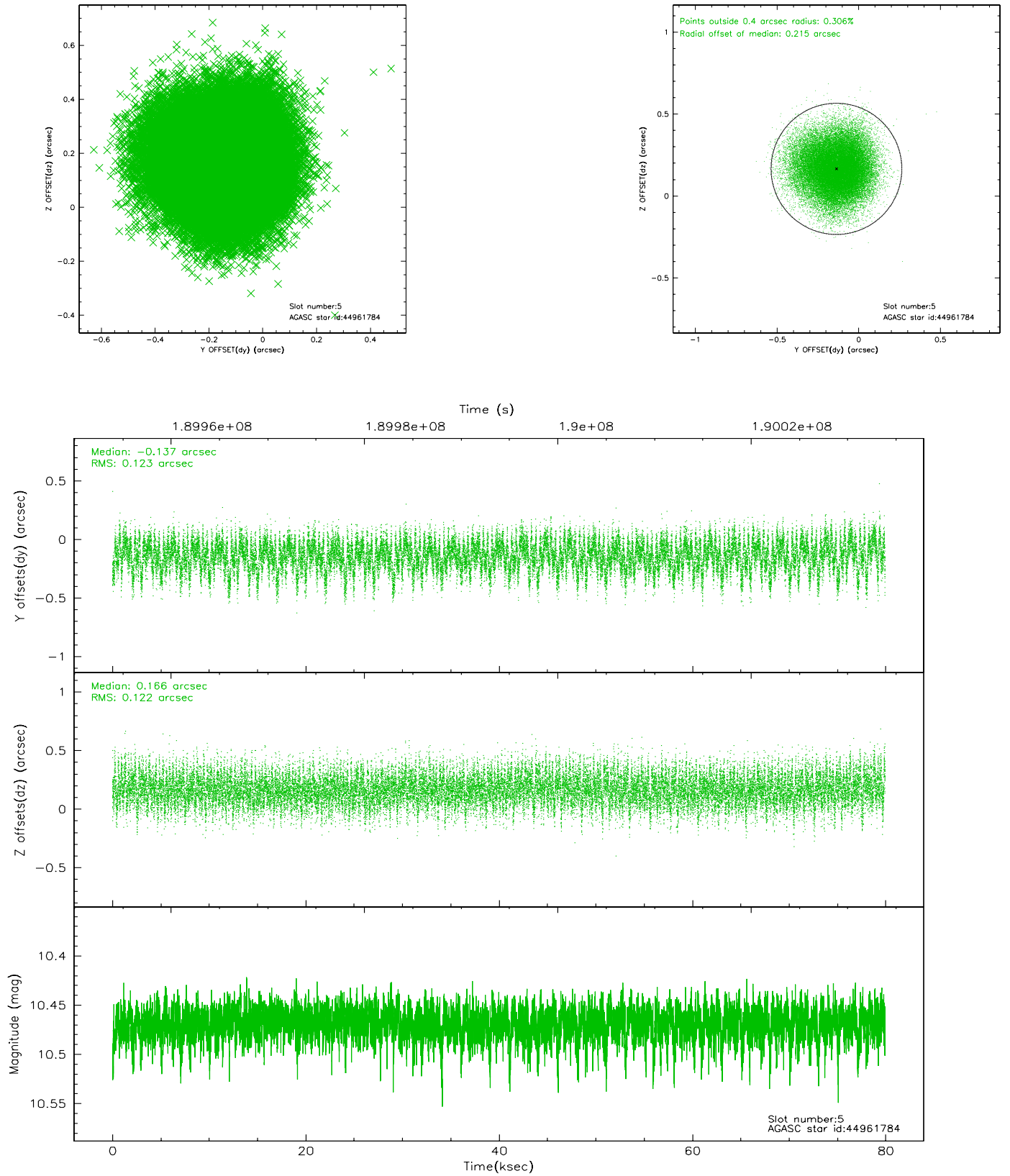
2.4.1 Slot 3



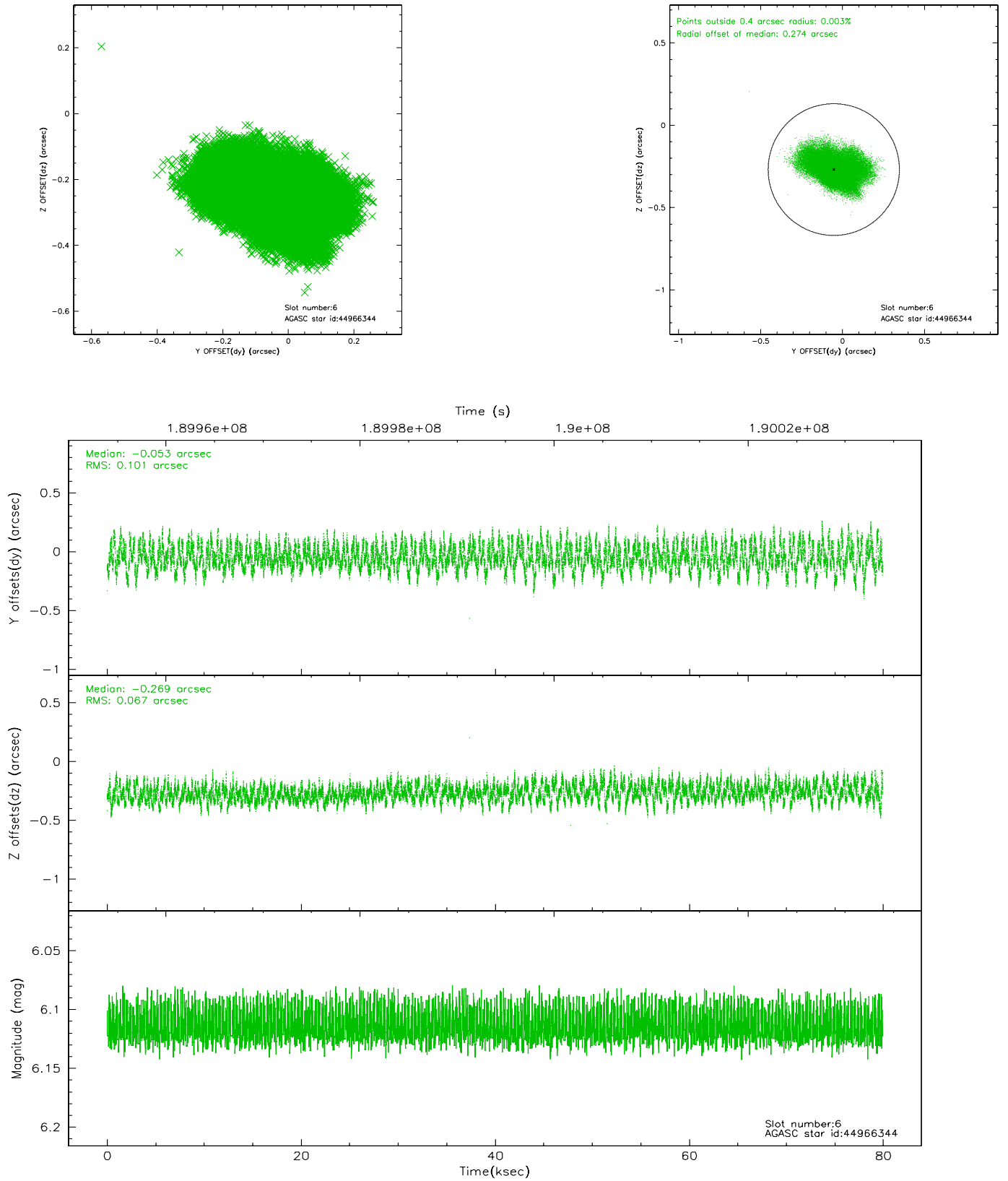
2.4.2 Slot 4



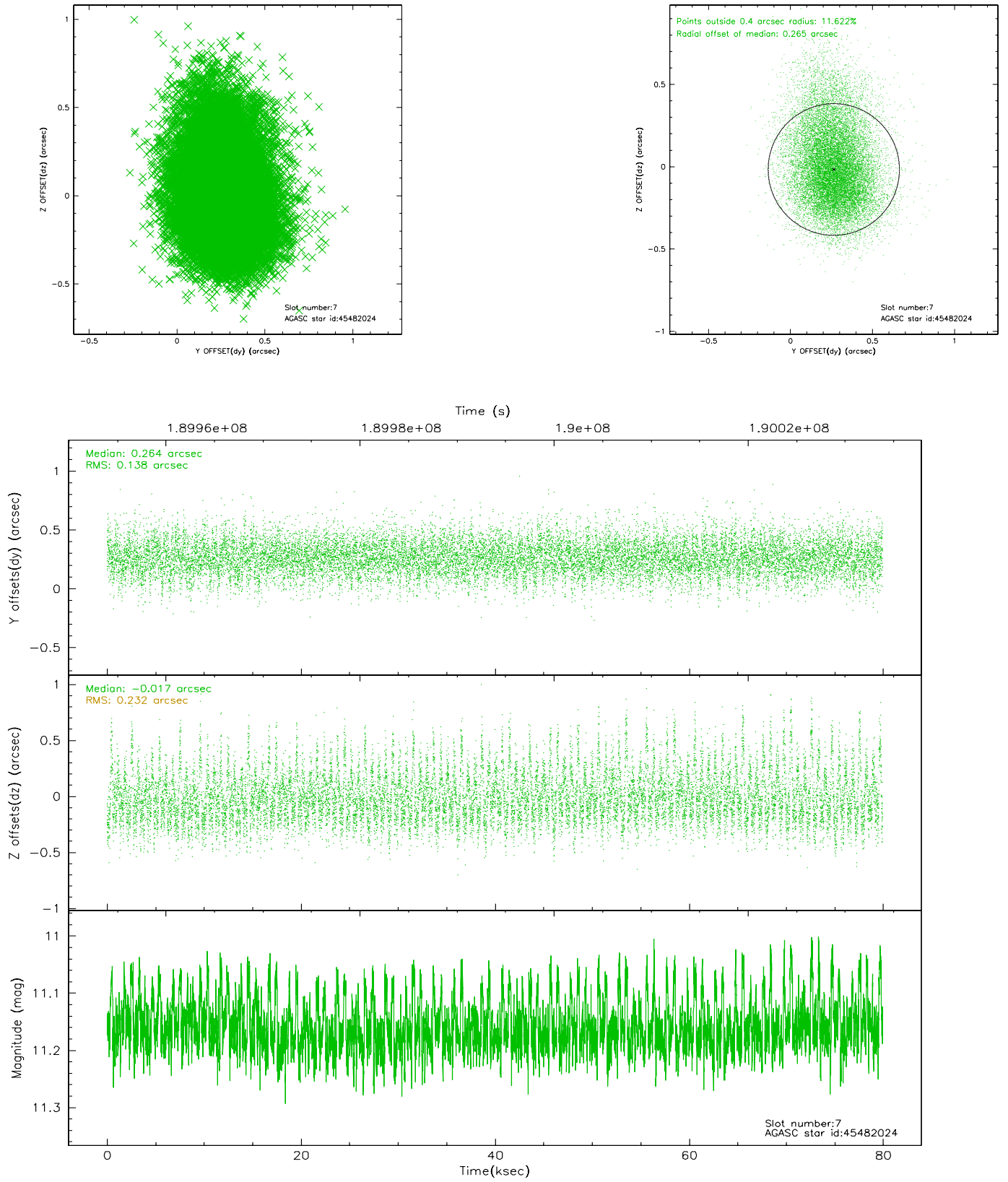
2.4.3 Slot 5



2.4.4 Slot 6

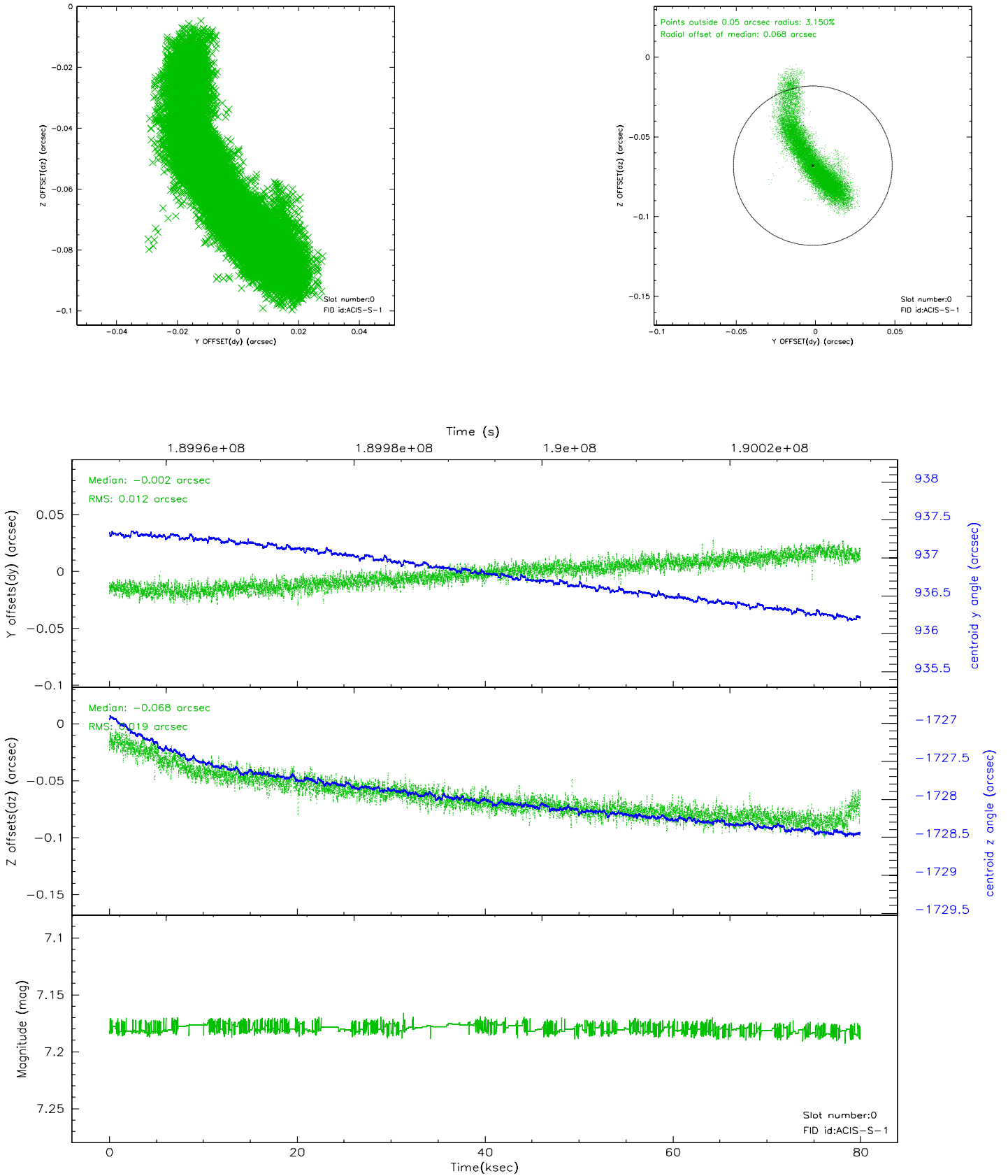


2.4.5 Slot 7

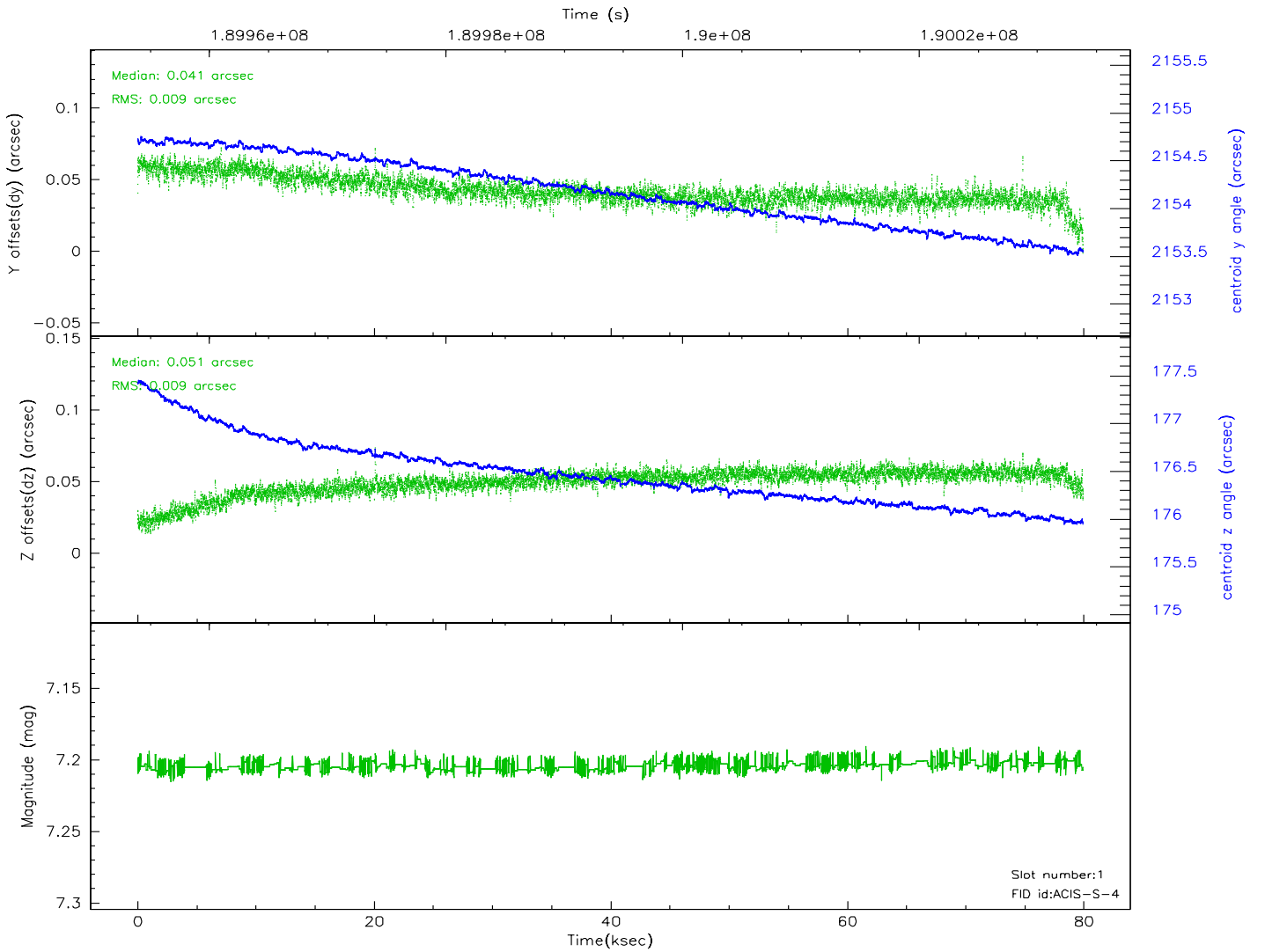
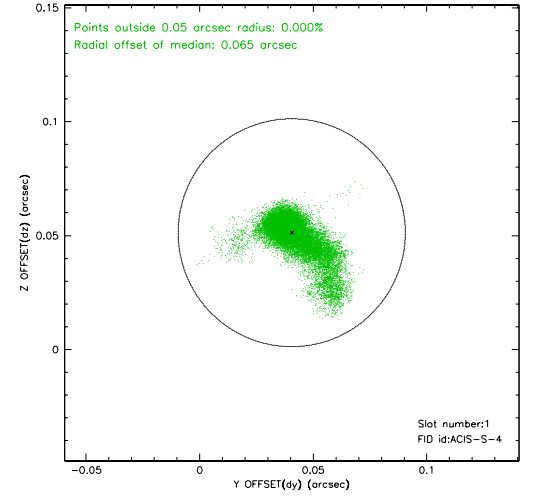
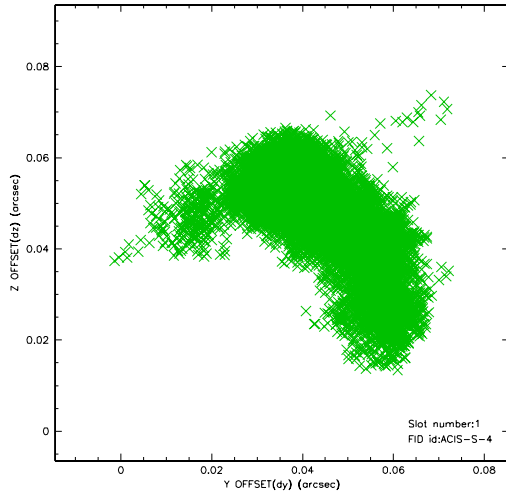


2.5 FID Slots

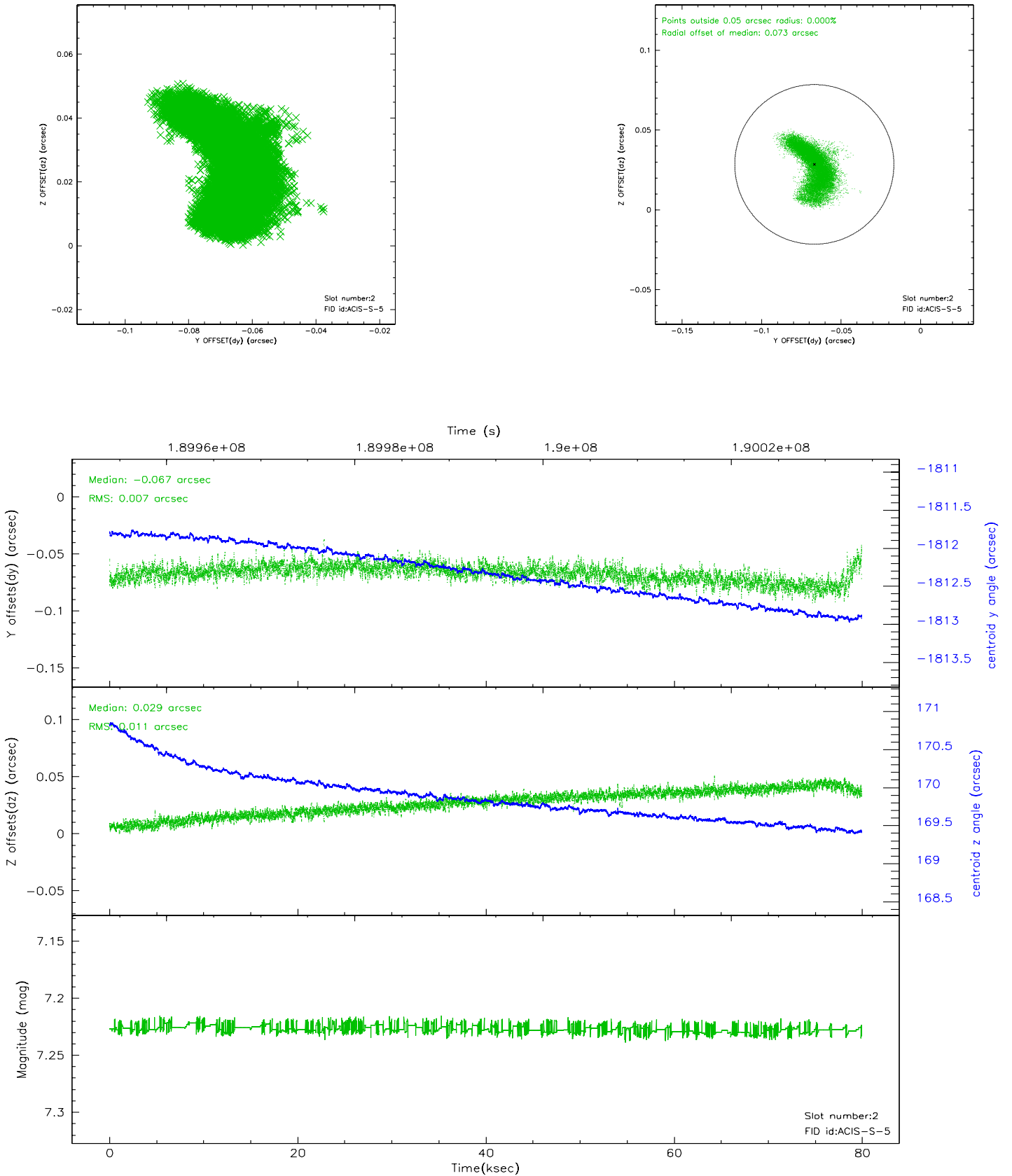
2.5.1 Slot 0



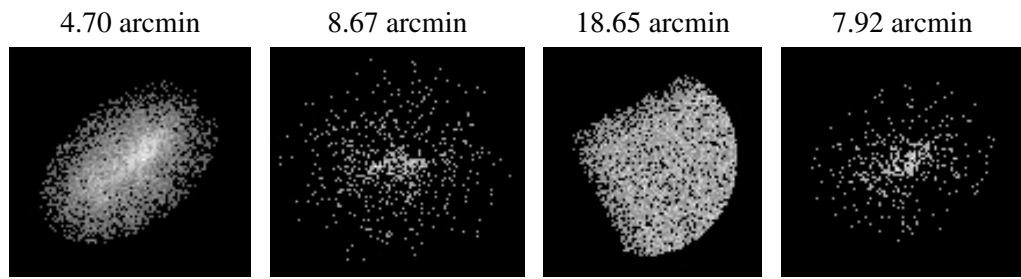
2.5.2 Slot 1



2.5.3 Slot 2



3 Point Sources



A Summary

A.1 Status

V&V Scientist	Jen Lauer
V&V Date (YYYY-MM-DD)	2009.02.11
V&V Edition	1
V&V Disposition and Status	OK
V&V Charge Time	78.905

A.2 Comments

This obsid was reprocessed to correct minor errors in parameters used in processing. Some of these parameters cannot be determined automatically for this observation and were derived from spacecraft telemetry.