

V&V Reference Report

L2 ASCDS Version : 7.6.7.2

Observation 4976 - L2 Version 001
Chandra X-Ray Center

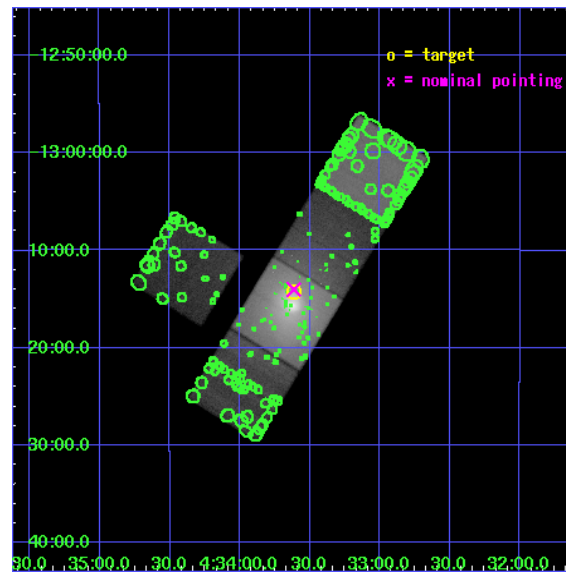
L2 Processing Date : Apr 28 2006

Contents

1	Front	2
2	OBI	3
2.1	OBI	3
2.1.1	Images	3
2.1.2	Bias	3
2.1.3	Parameters	4
2.1.4	Events	4
2.2	Compared Parameters	5
2.3	Aspect	6
2.4	Star Slots	9
2.4.1	Slot 3	9
2.4.2	Slot 4	10
2.4.3	Slot 5	11
2.4.4	Slot 6	12
2.4.5	Slot 7	13
2.5	FID Slots	14
2.5.1	Slot 0	14
2.5.2	Slot 1	15
2.5.3	Slot 2	16
3	Point Sources	17
A	Summary	18
A.1	Status	18
A.2	Comments	18

1 Front

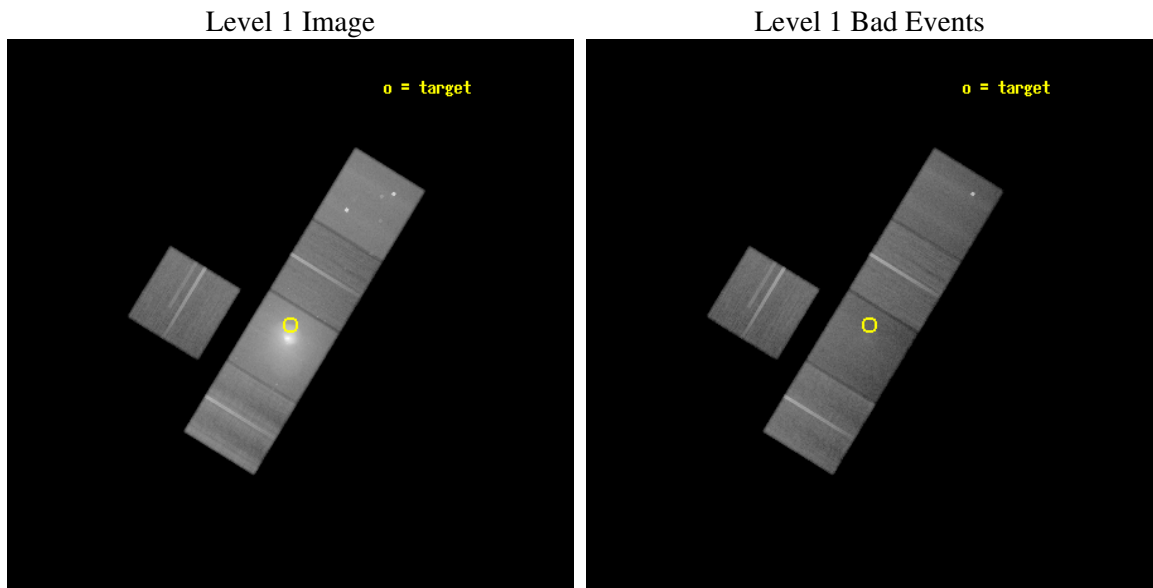
seq_num	800421
obs_id	4976
title	The Nature of Cold Fronts in Galaxy Clusters
observer	Dr Renato Dupke
object	Abell 496
dtcycle	0
cycle	P
ra_targ	68.404167
dec_targ	-13.238056
ra_nom	68.403500530985
dec_nom	-13.233761460184
roll_nom	121.44313724919
revision	2
ontime	76077.099853724
livetime	75083.096536989
ontime3	74446.933361709
ontime5	76077.099853724
ontime6	74607.123322546
ontime7	76077.099853724
ontime8	74691.011835188
l2events	1802014



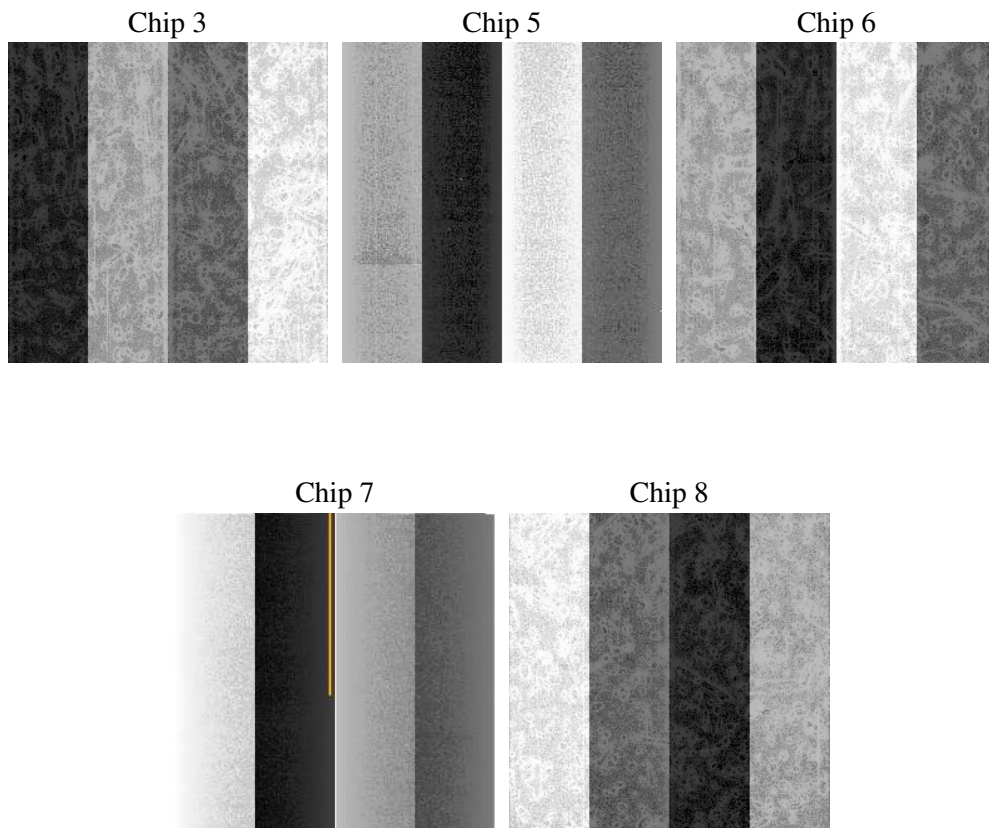
2 OBI

2.1 OBI

2.1.1 Images



2.1.2 Bias



2.1.3 Parameters

obi_num	0
ascdsver	7.6.7.2
caldbver	3.2.1
date	2006-04-28T07:01:38
revision	2

sched_exp_time	75954.225000
ontime	76081.347160041
ontime3	74451.180668026
ontime5	76081.347160041
ontime6	74611.370628864
ontime7	76081.347160041
ontime8	74693.036183804
l1events	3879375

2.1.4 Events

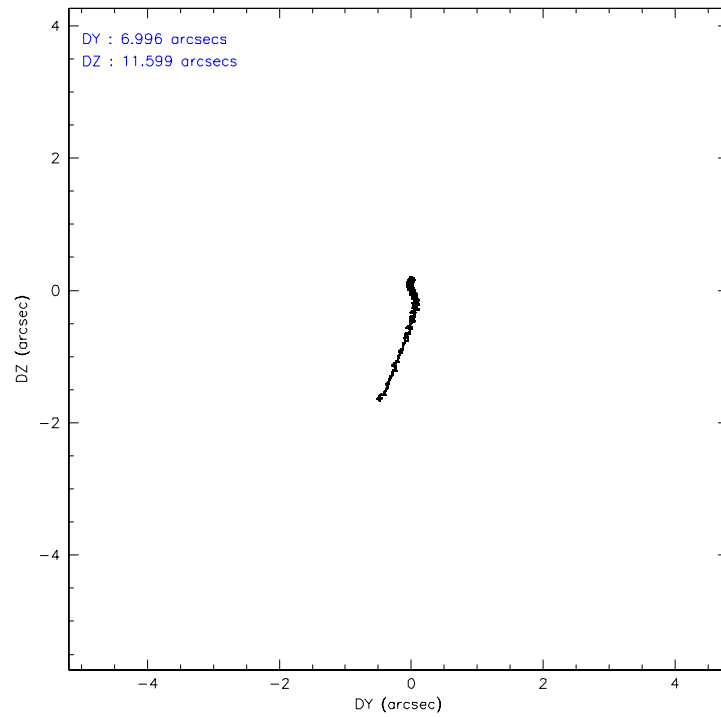
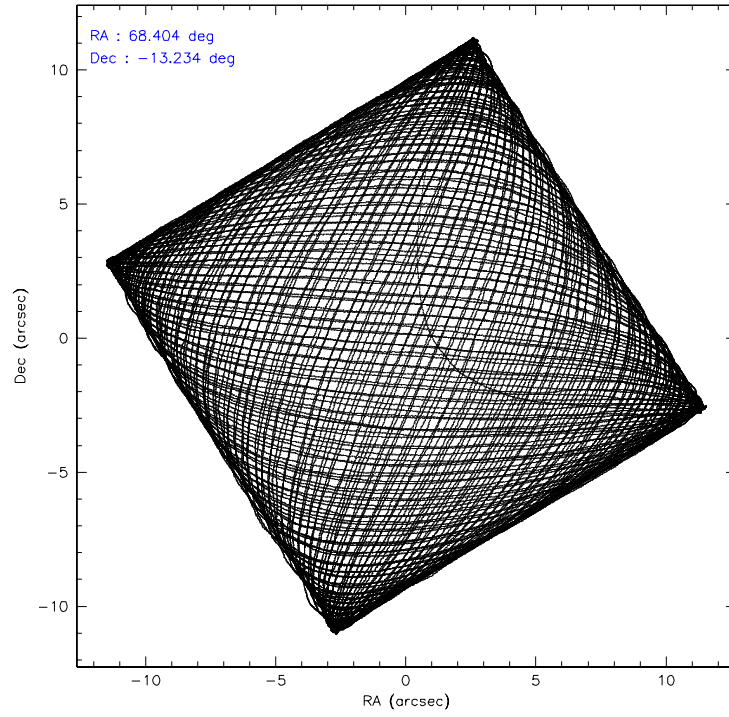
	ccd 3	ccd 5	ccd 6	ccd 7	ccd 8
level 1 events	478744	757366	581151	1377260	684854
rejected events	400826	338449	415577	302841	434480
rejected %	83%	44%	71%	21%	63%

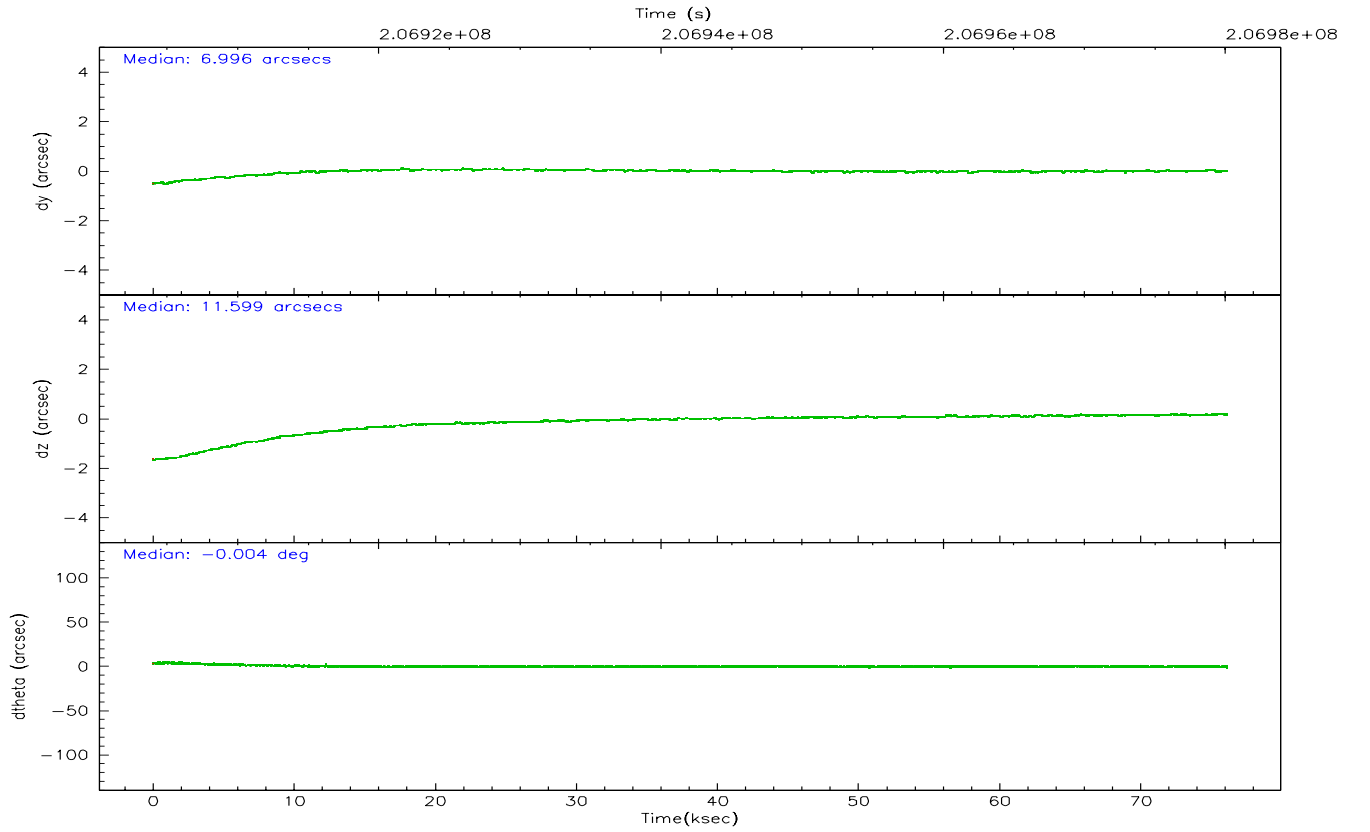
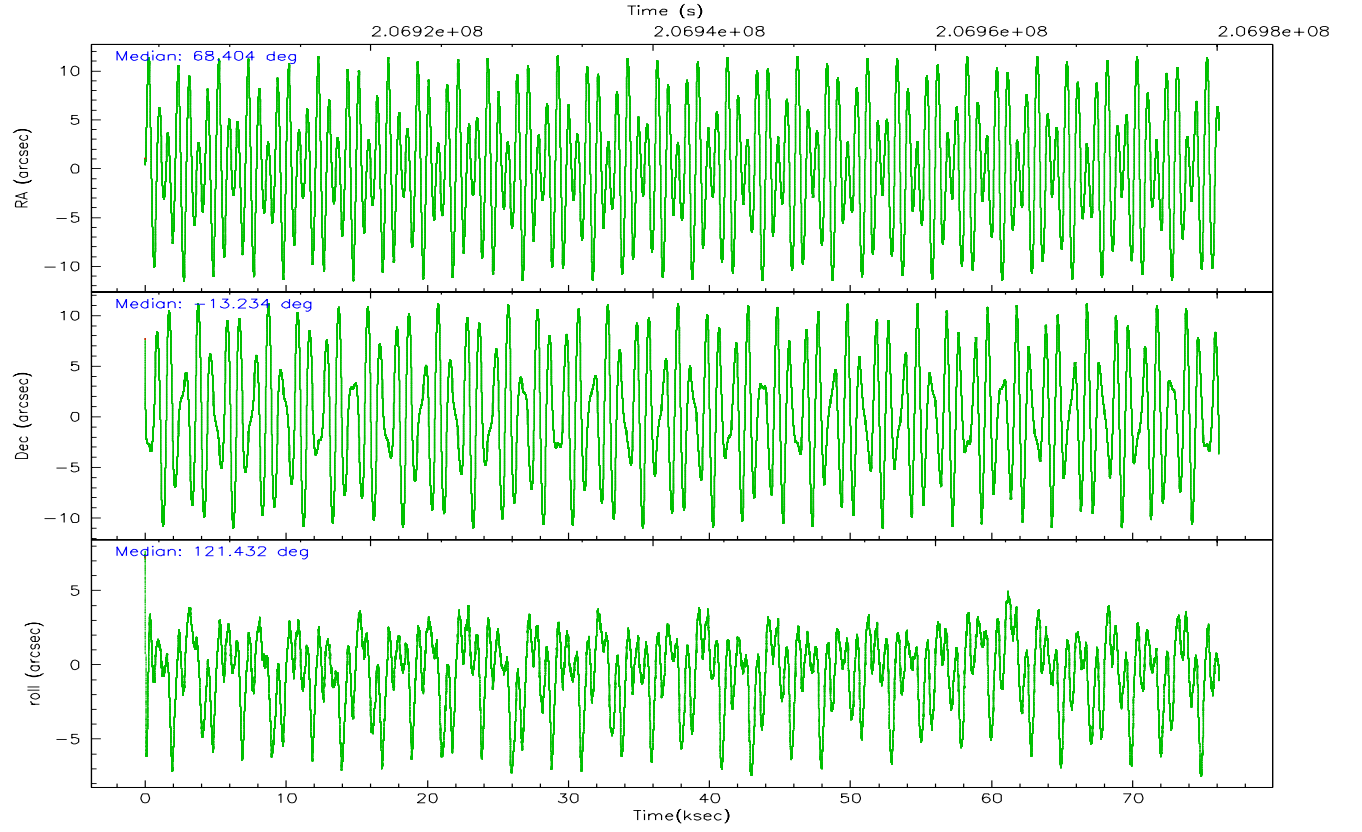
	ccd 3	ccd 5	ccd 6	ccd 7	ccd 8
grade 0 events	41825	41783	111171	234293	112633
	8%	5%	19%	17%	16%
grade 1 events	348	238	592	474	786
	0%	0%	0%	0%	0%
grade 2 events	13132	135754	22057	291380	40531
	2%	17%	3%	21%	5%
grade 3 events	6154	13682	8821	101920	26966
	1%	1%	1%	7%	3%
grade 4 events	6174	12070	8757	99833	24709
	1%	1%	1%	7%	3%
grade 5 events	16530	37328	17337	43522	25309
	3%	4%	2%	3%	3%
grade 6 events	10656	215701	14794	347123	45540
	2%	28%	2%	25%	6%
grade 7 events	383925	300810	397622	258715	408380
	80%	39%	68%	18%	59%

2.2 Compared Parameters

Parameter	Planned	Actual	Parameter	Planned	Actual
Instrument	ACIS	ACIS	Obspar format version number	6	6
Detector	ACIS-35678	ACIS-35678	Obspar file type	PREDICTED	ACTUAL
Grating	NONE	NONE	Obspar update status	NONE	UPDATED
Data mode	VFAINT	VFAINT	On-chip summing requested	N	N
Observation mode	POINTING	POINTING	Subarray requested	NONE	NONE
Pointing RA	68.428235	68.40350053098452	Alternating exposures requested	N	N
Pointing Dec	-13.246446	-13.23376146018387	Primary exposure time	0.000000	3.1
Pointing Roll	121.292175	121.4431372491918			
SIM focus pos (mm)	-0.684267	-0.6828225247311905			
SIM defocus (mm)	0	0.001444936568705701			
SIM translation stage pos (mm)	-192.132523	-192.1314037687074			
SIM translation stage offset (mm)	2	1.998881185699588			
Observation start time	206904173.184000	206903199.73469			
Observation start date	2004-07-22T17:21:49	2004-07-22T17:06:39			
Observation end time	206980127.184000	206980343.28812			
Observation end date	2004-07-23T14:27:43	2004-07-23T14:32:23			
Read mode	TIMED	TIMED			

2.3 Aspect



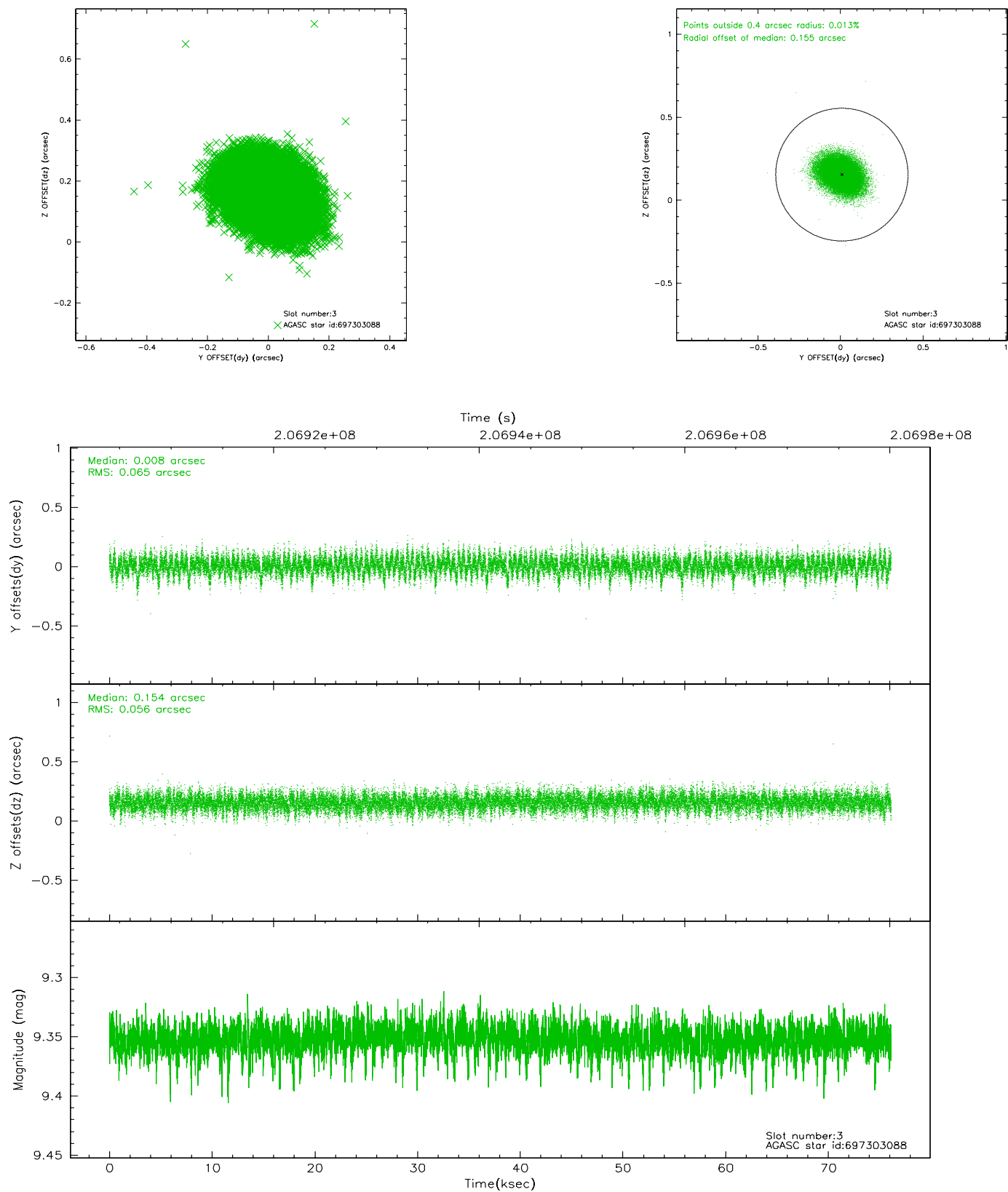


Slot Statistics

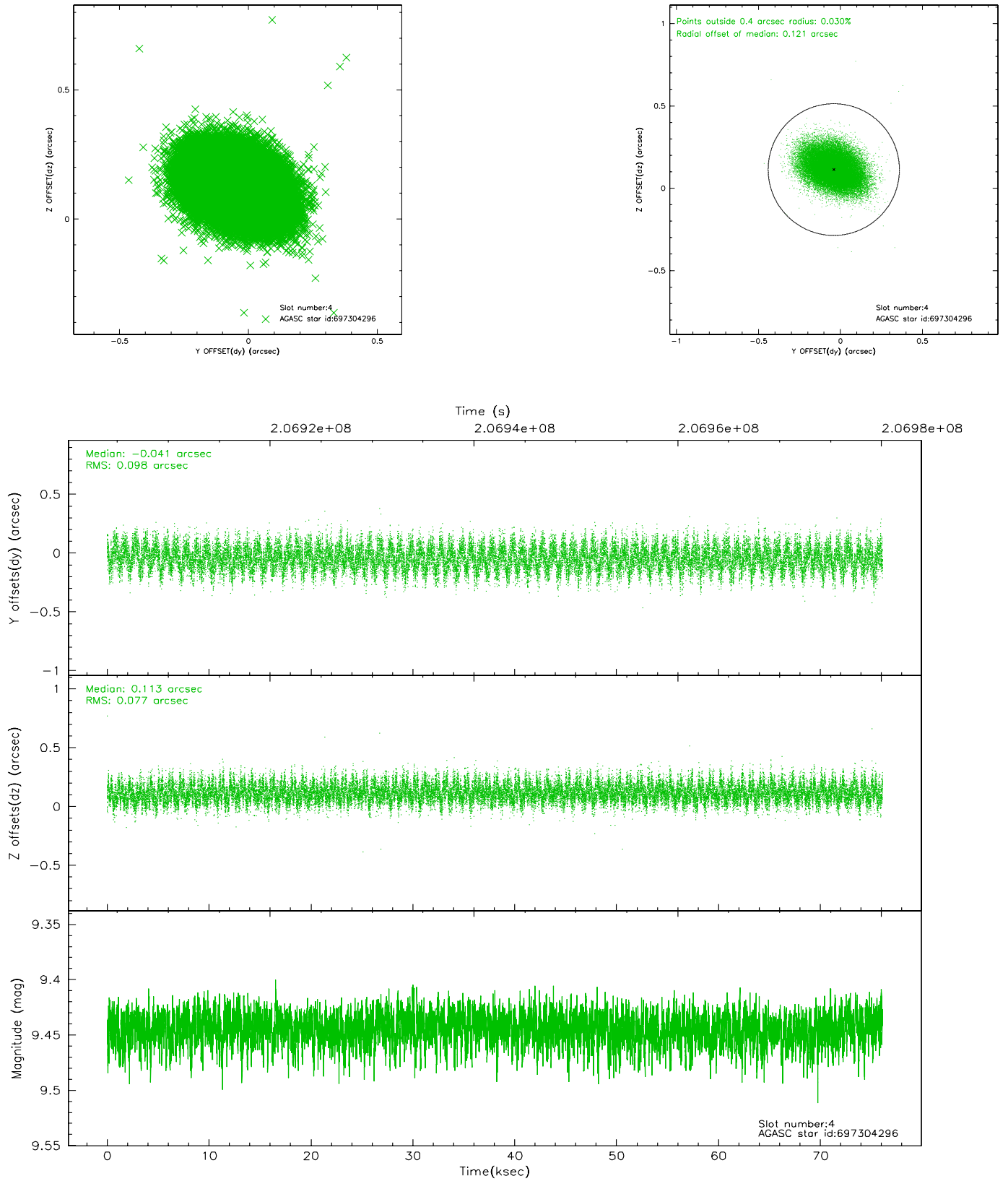
slot	status	id	mag	n_pts	med_dy	med_dz	dr1	dr2	ra	dec	mean_y	mean_z
0	FID	ACIS-S-2	7.10	18569	-0.022	0.011	0.008	0.019	0.000000	0.000000	-759.87	-1691.66
1	FID	ACIS-S-4	7.20	18566	0.029	0.008	0.006	0.019	0.000000	0.000000	2153.48	216.90
2	FID	ACIS-S-5	7.22	18569	-0.038	-0.010	0.008	0.025	0.000000	0.000000	-1812.82	210.47
3	GUIDE	697303088	9.35	37108	0.008	0.154	0.090	0.152	68.381419	-13.128687	447.78	-79.65
4	GUIDE	697304296	9.44	37095	-0.041	0.113	0.132	0.214	68.446705	-12.512422	2224.79	-1427.29
5	GUIDE	697311296	9.14	37114	-0.067	-0.230	0.103	0.160	67.817784	-13.358108	764.54	2037.00
6	GUIDE	697312112	9.61	37017	0.191	-0.165	0.115	0.181	68.203644	-13.816922	-1347.42	1737.19
7	GUIDE	697317744	8.90	37124	-0.086	0.122	0.073	0.118	68.814094	-12.965653	160.27	-1681.02

2.4 Star Slots

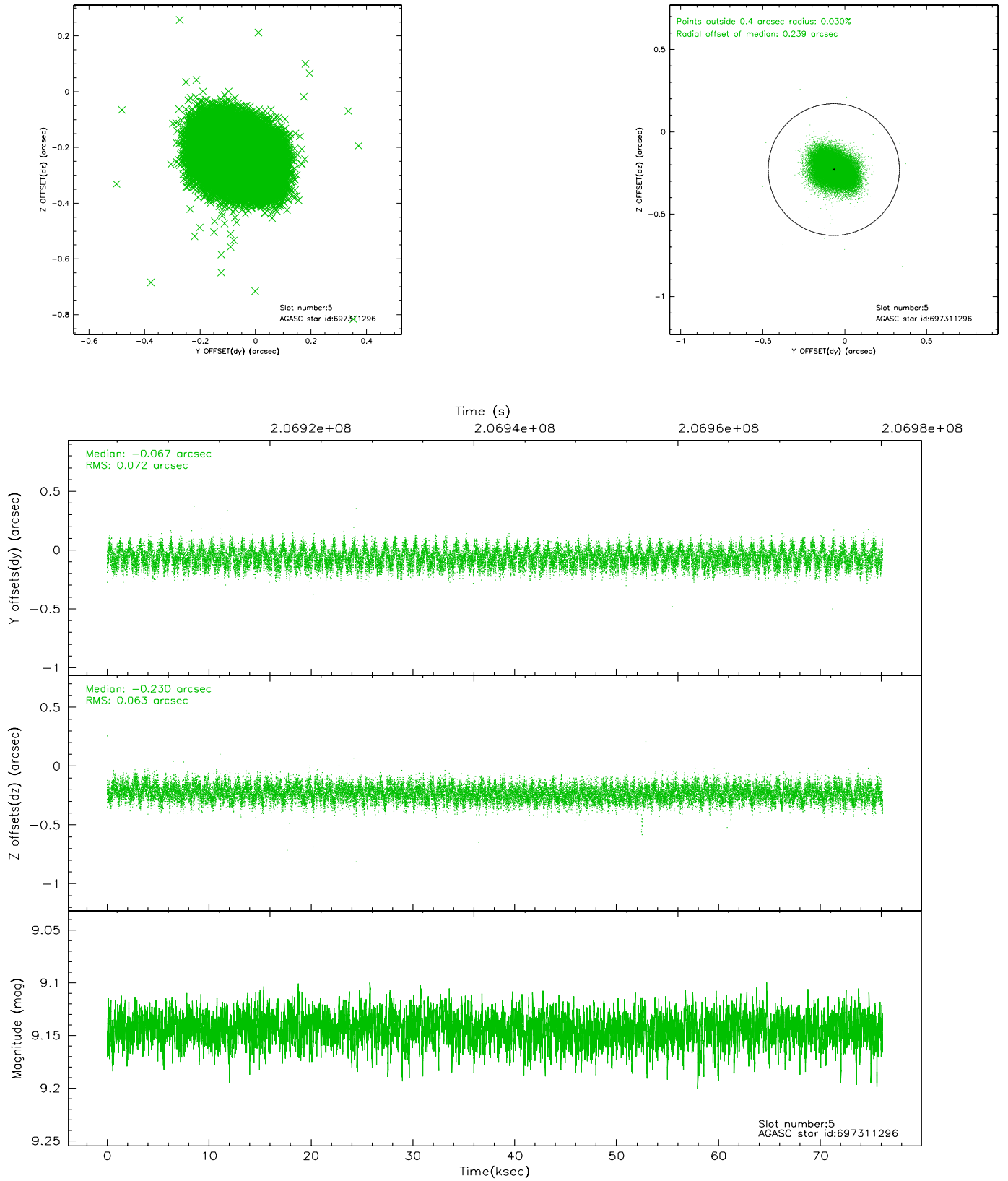
2.4.1 Slot 3



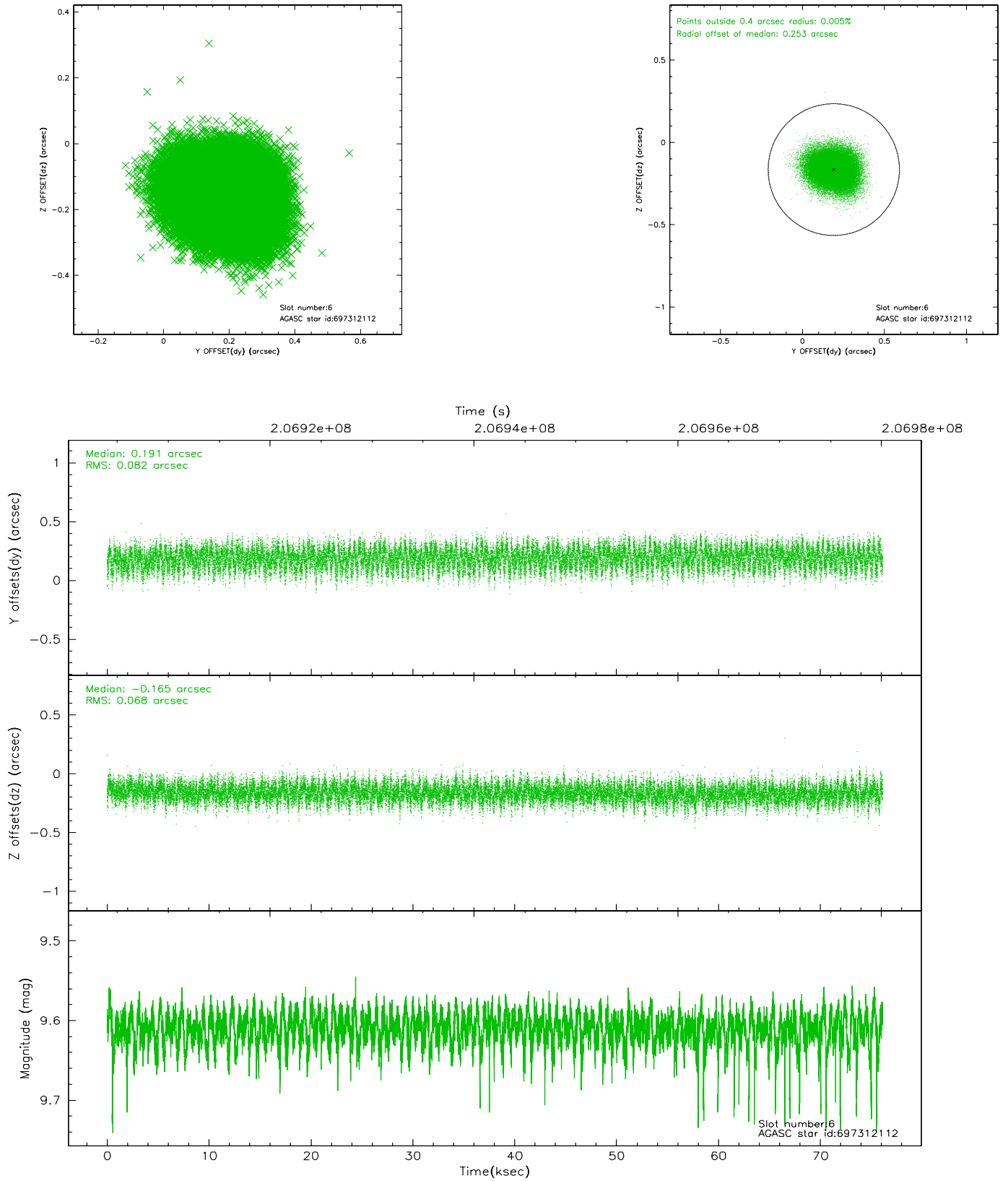
2.4.2 Slot 4



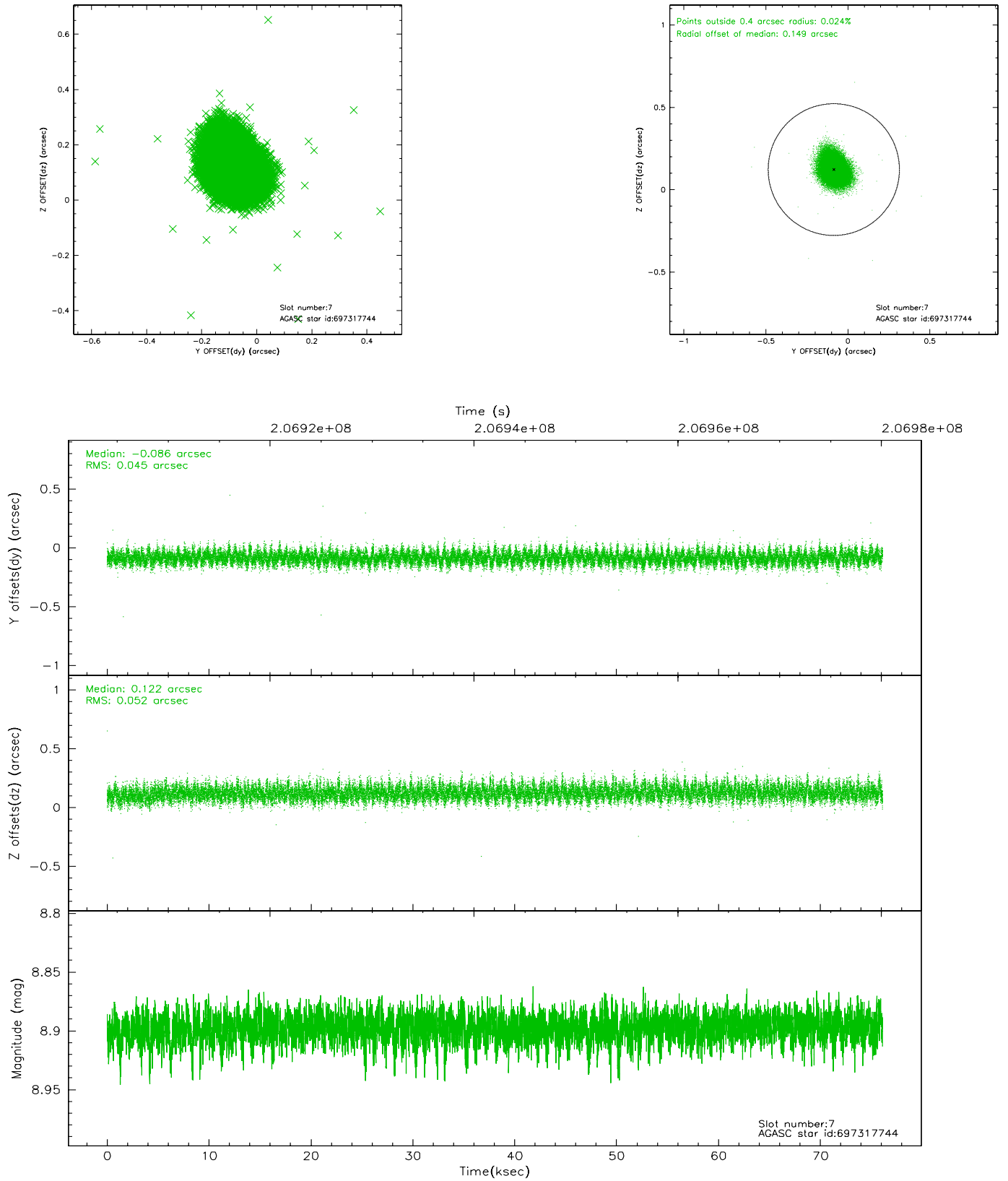
2.4.3 Slot 5



2.4.4 Slot 6

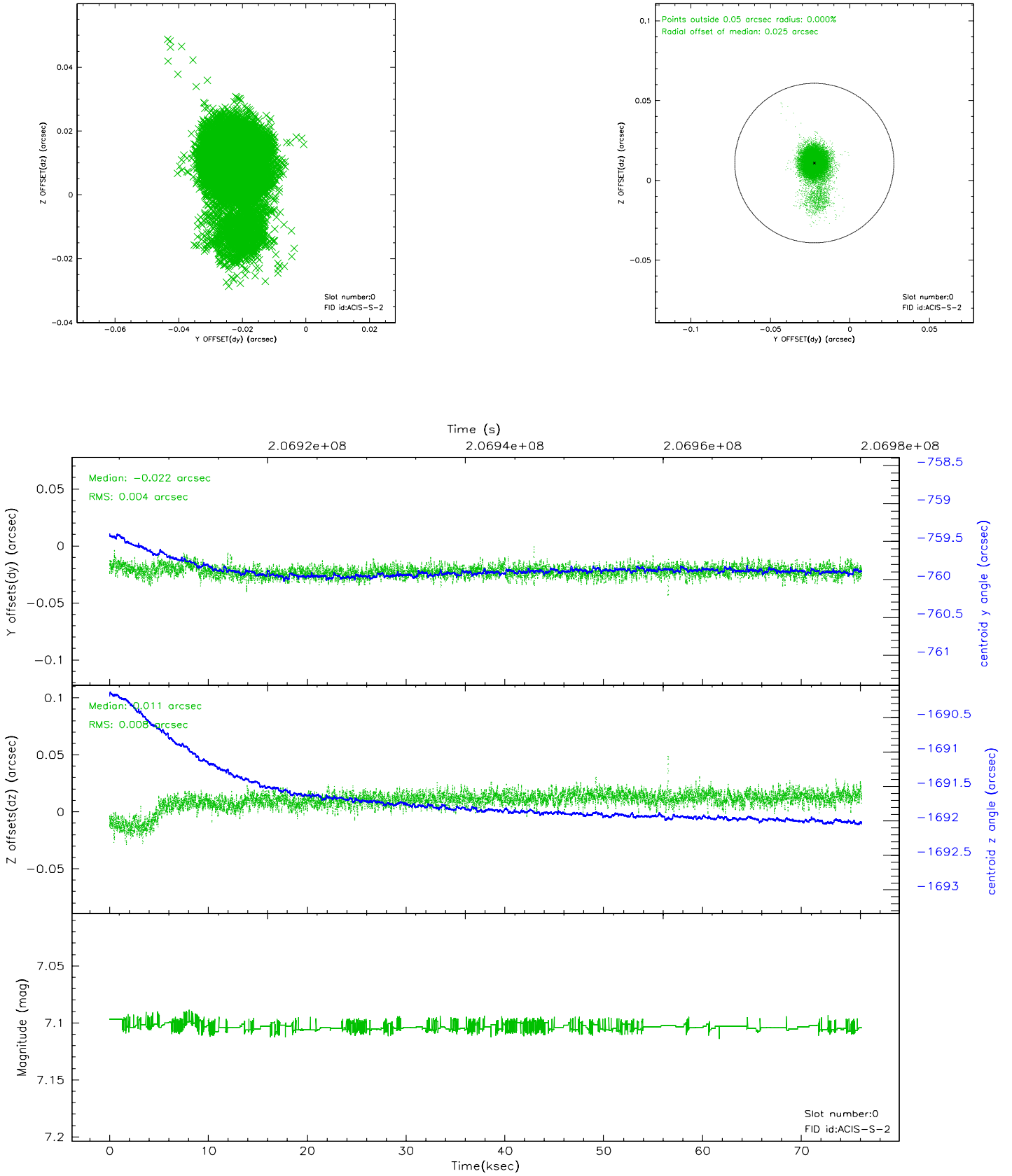


2.4.5 Slot 7

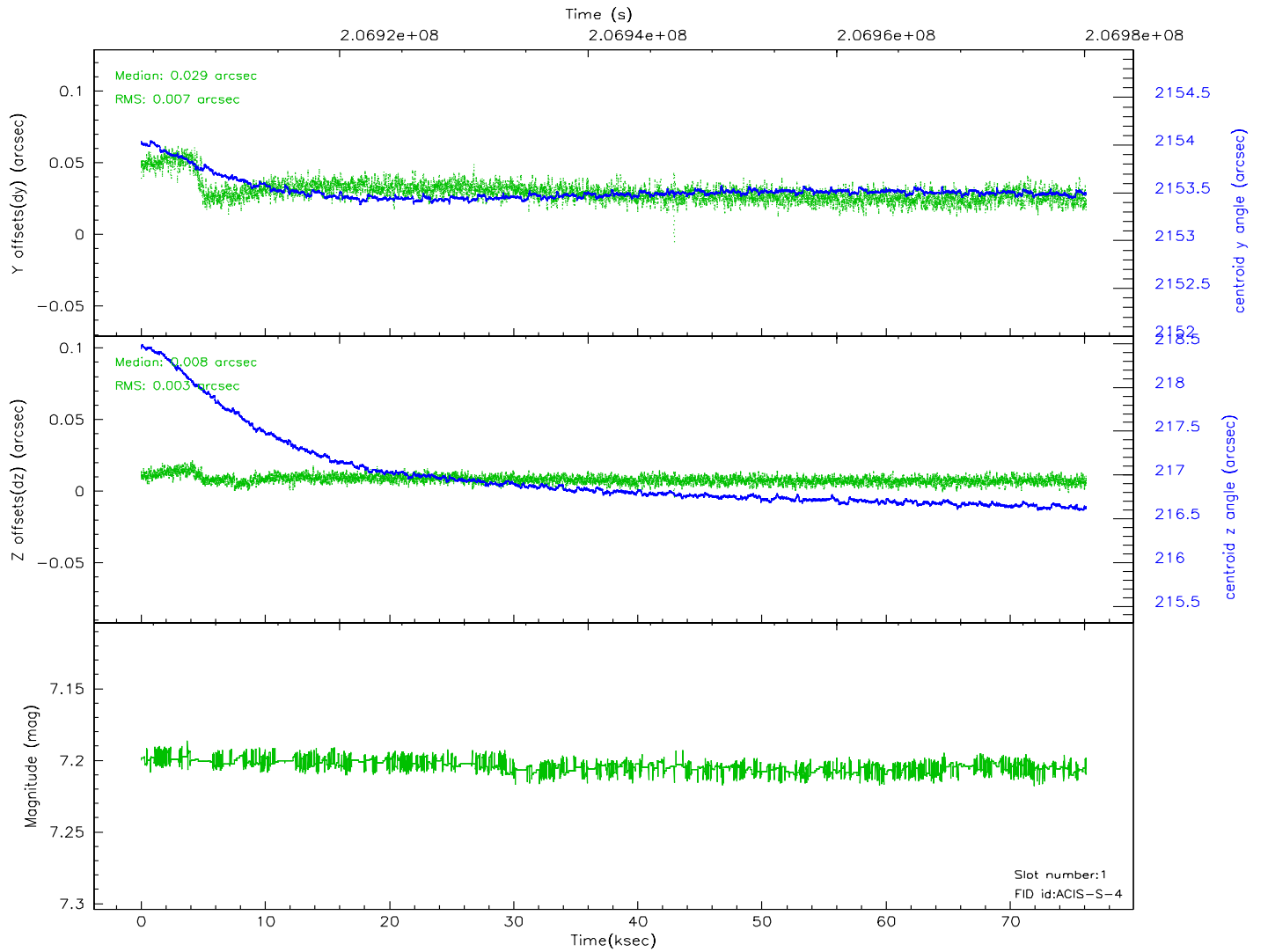
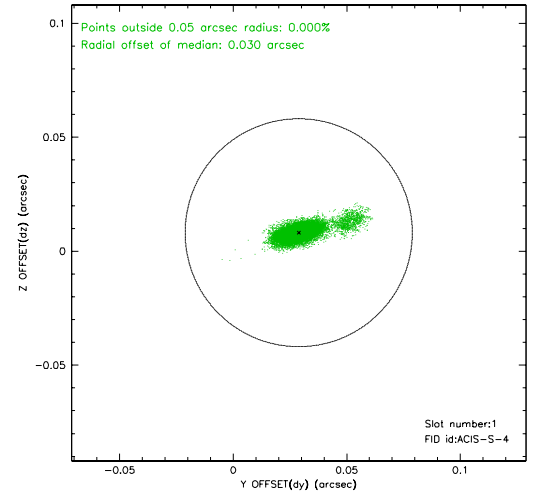
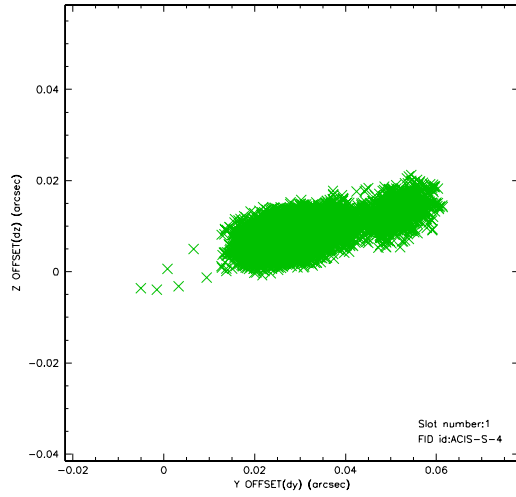


2.5 FID Slots

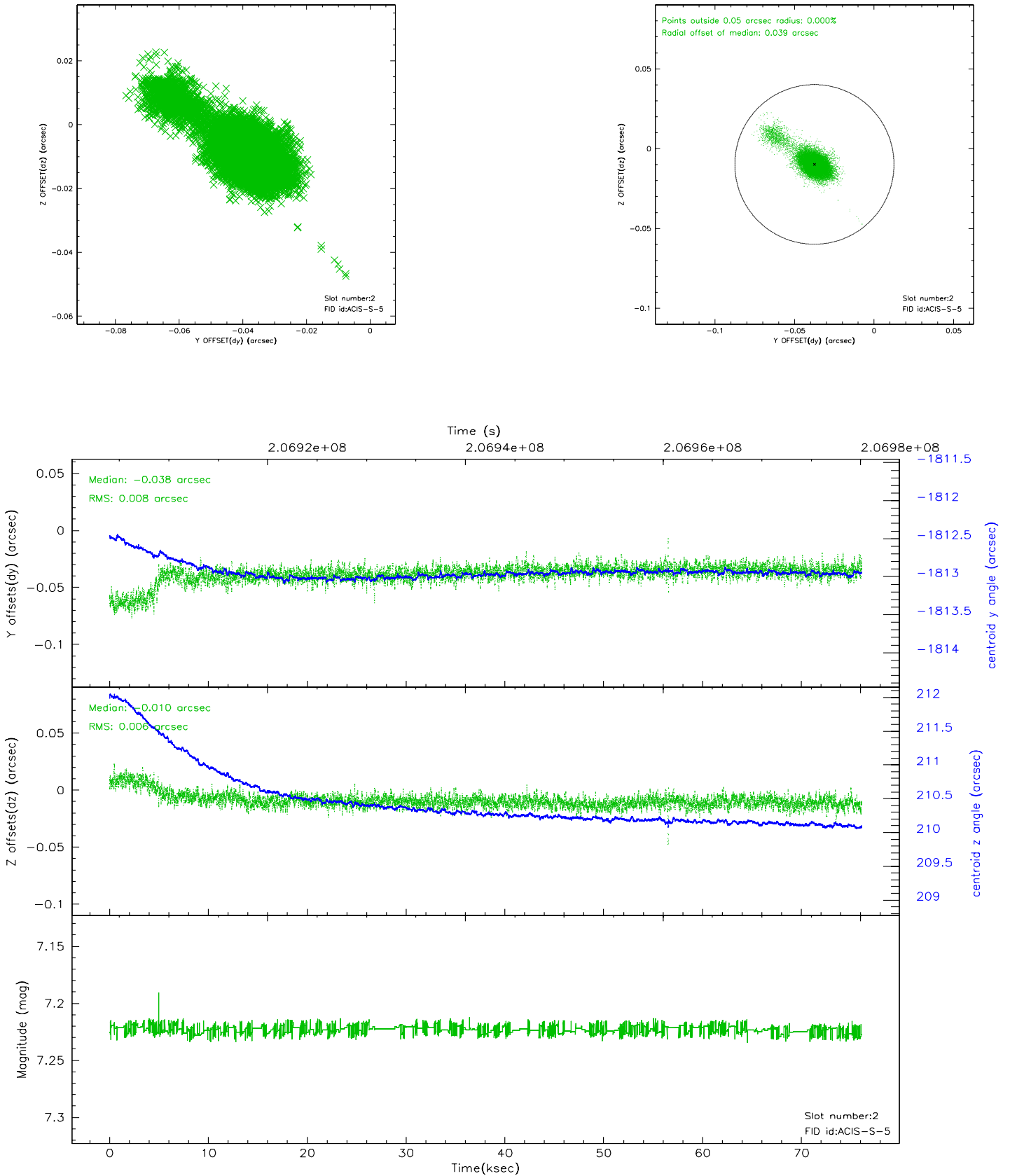
2.5.1 Slot 0



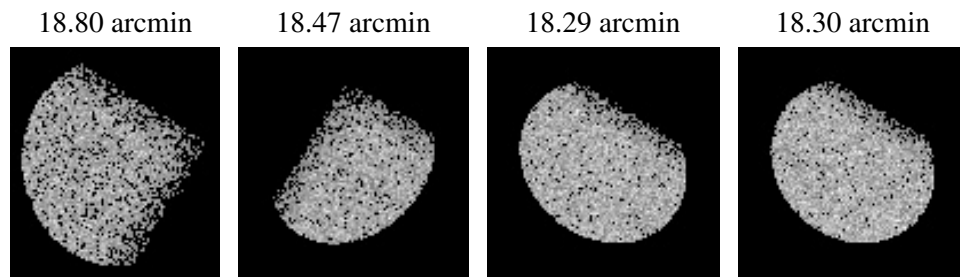
2.5.2 Slot 1



2.5.3 Slot 2



3 Point Sources



A Summary

A.1 Status

V&V Scientist	Beth Sundheim
V&V Date (YYYY-MM-DD)	2006.04.28
V&V Edition	1
V&V Disposition and Status	OK
V&V Charge Time	76.077

A.2 Comments