

V&V Reference Report

L2 ASCDS Version : 7.6.7.1

Observation 4967 - L2 Version 001
Chandra X-Ray Center

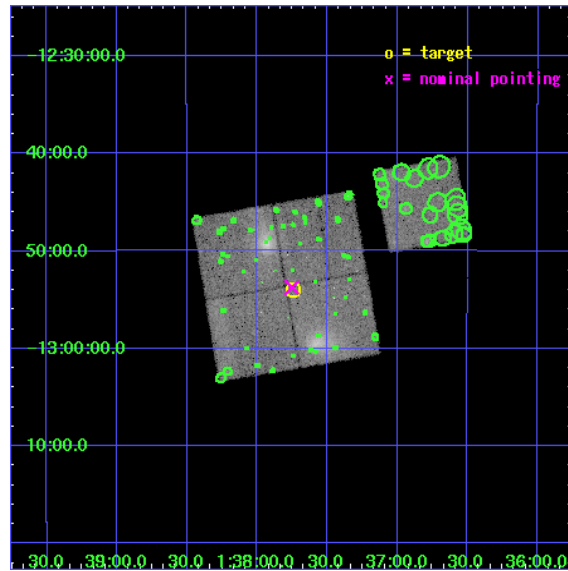
L2 Processing Date : Apr 17 2006

Contents

1	Front	2
2	OBI	3
2.1	OBI	3
2.1.1	Images	3
2.1.2	Bias	3
2.1.3	Parameters	4
2.1.4	Events	4
2.2	Compared Parameters	5
2.3	Aspect	6
2.4	Star Slots	9
2.4.1	Slot 3	9
2.4.2	Slot 4	10
2.4.3	Slot 5	11
2.4.4	Slot 6	12
2.4.5	Slot 7	13
2.5	FID Slots	14
2.5.1	Slot 0	14
2.5.2	Slot 1	15
2.5.3	Slot 2	16
3	Point Sources	17
A	Summary	18
A.1	Status	18
A.2	Comments	18

1 Front

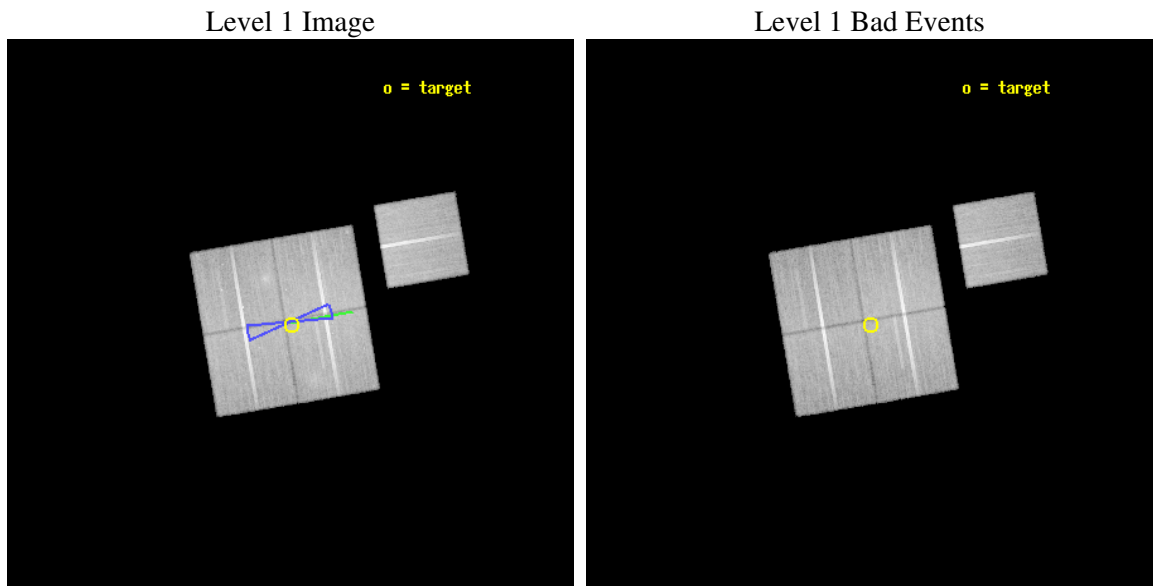
seq_num	800413
obs_id	4967
title	Chandra Observations of Two Double Clusters
observer	Dr. David Davis
object	Abell~222/ Abell~223
dtcycle	0
cycle	P
ra_targ	24.435417
dec_targ	-12.899806
ra_nom	24.437979405658
dec_nom	-12.895925944297
roll_nom	80.386448123775
revision	2
ontime	45675.358912021
livetime	45078.576722125
ontime0	45669.076951534
ontime1	45675.358902007
ontime2	45675.358931899
ontime3	45675.358912021
ontime6	45675.358931929
l2events	145371



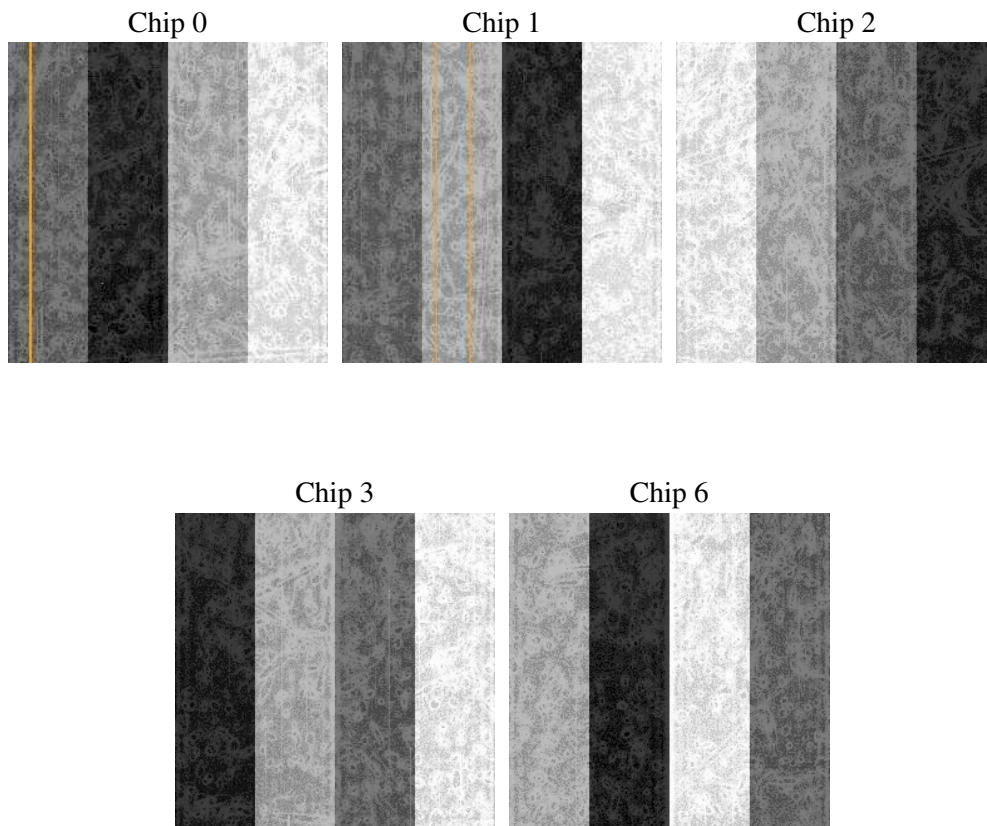
2 OBI

2.1 OBI

2.1.1 Images



2.1.2 Bias



2.1.3 Parameters

obi_num	0
ascdsver	7.6.7.1
caldbver	3.2.1
date	2006-04-17T14:15:32
revision	2

sched_exp_time	45500.000000
ontime	47517.229710221
ontime0	47510.947729826
ontime1	47517.229700208
ontime2	47517.229710191
ontime3	47517.229710221
ontime6	47517.229730129
l1events	1536029

2.1.4 Events

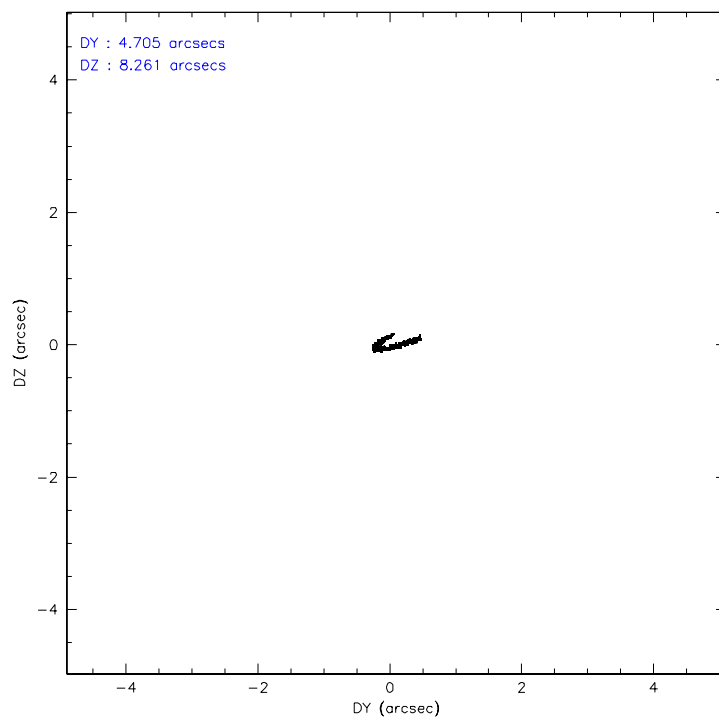
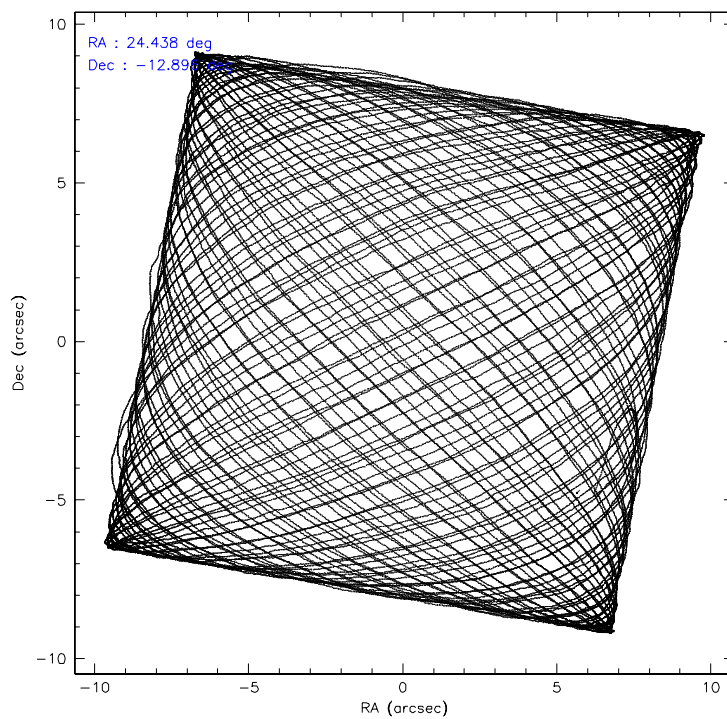
	ccd 0	ccd 1	ccd 2	ccd 3	ccd 6
level 1 events	293043	290013	325731	320386	306856
rejected events	253253	257225	295274	281452	277831
rejected %	86%	88%	90%	87%	90%

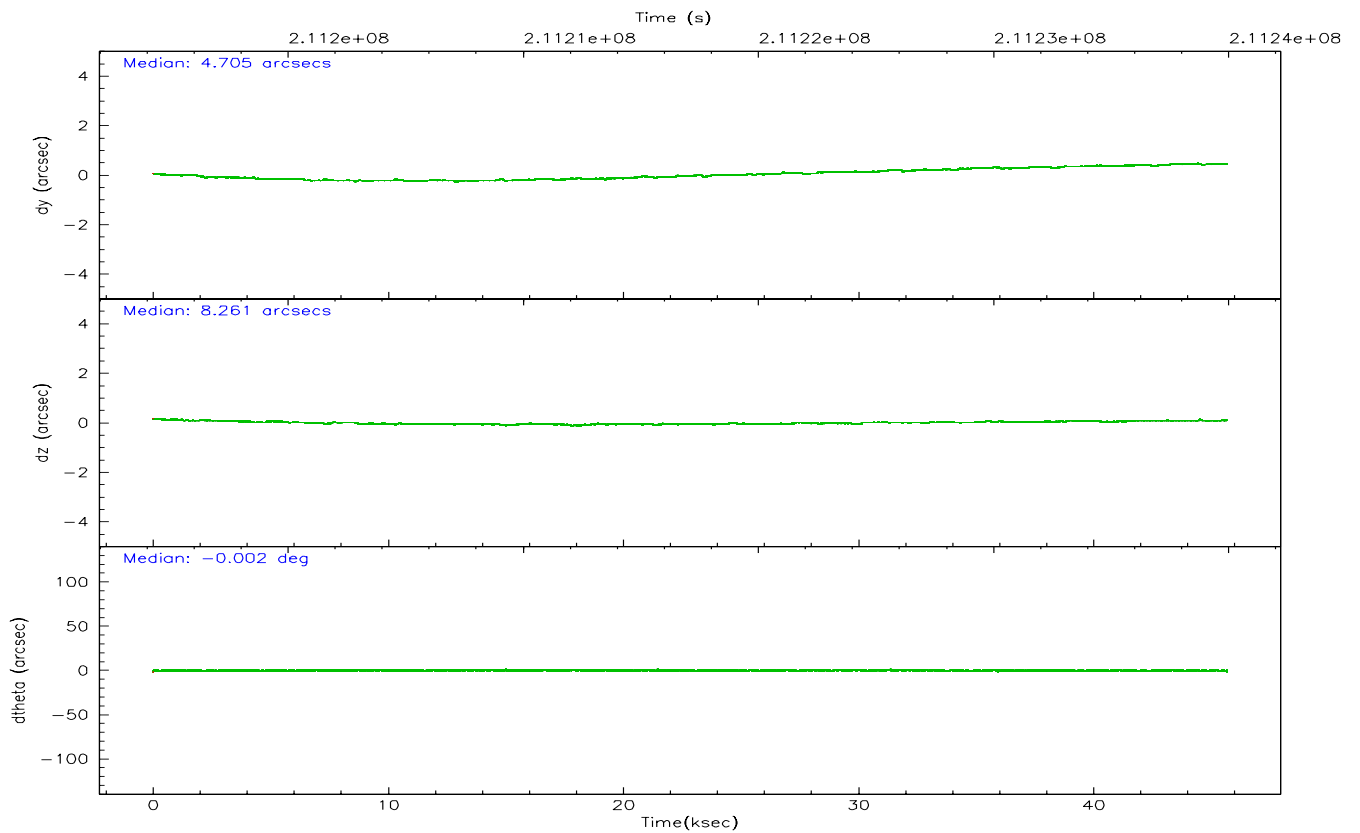
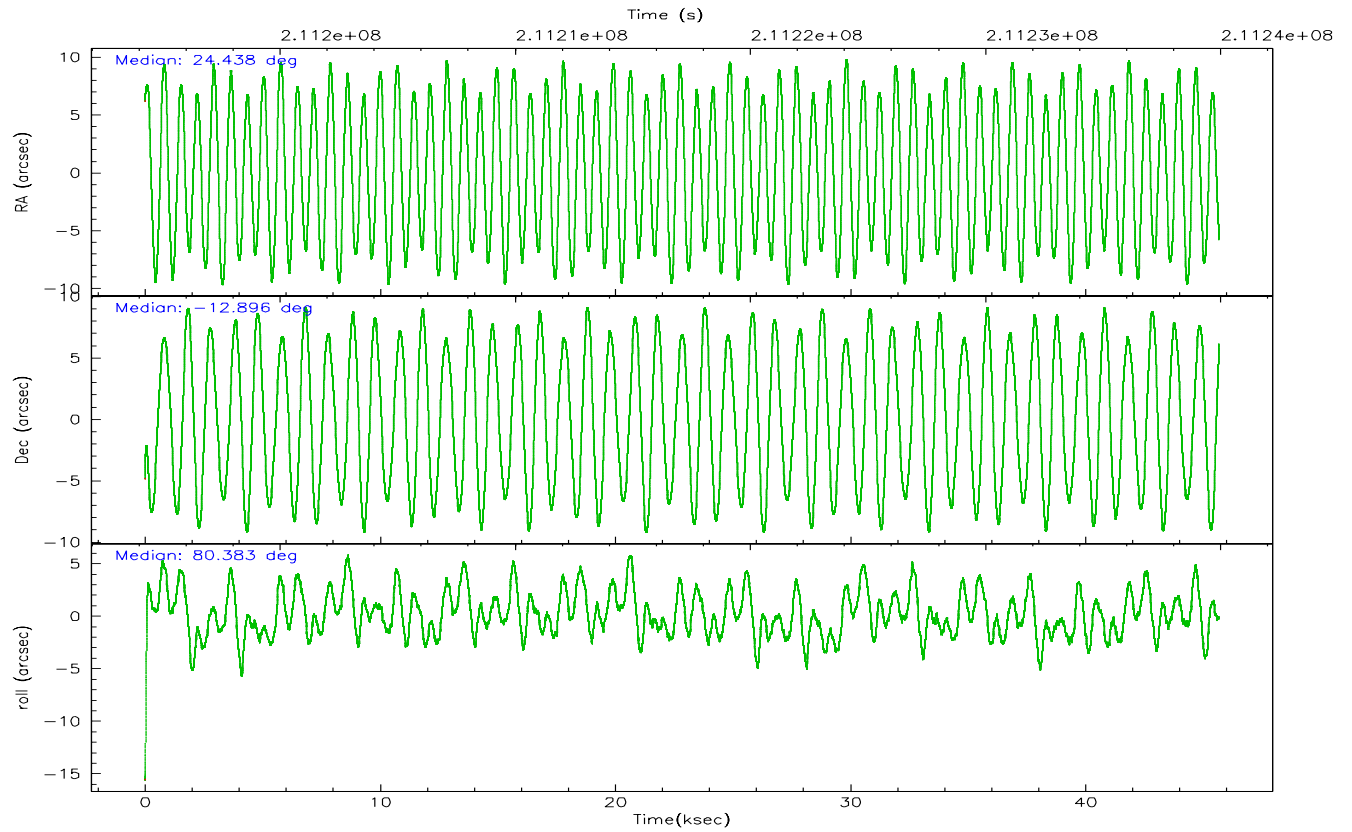
	ccd 0	ccd 1	ccd 2	ccd 3	ccd 6
grade 0 events	19491	12457	12184	19652	10404
	6%	4%	3%	6%	3%
grade 1 events	166	135	178	200	129
	0%	0%	0%	0%	0%
grade 2 events	8019	7321	7197	7334	6427
	2%	2%	2%	2%	2%
grade 3 events	3848	3754	3360	3642	3469
	1%	1%	1%	1%	1%
grade 4 events	3567	3784	3380	3566	3393
	1%	1%	1%	1%	1%
grade 5 events	10555	11514	9959	12093	11610
	3%	3%	3%	3%	3%
grade 6 events	6096	6783	5502	5878	6447
	2%	2%	1%	1%	2%
grade 7 events	241301	244265	283971	268021	264977
	82%	84%	87%	83%	86%

2.2 Compared Parameters

Parameter	Planned	Actual	Parameter	Planned	Actual
Instrument	ACIS	ACIS	Obspar format version number	6	6
Detector	ACIS-01236	ACIS-01236	Obspar file type	PREDICTED	ACTUAL
Grating	NONE	NONE	Obspar update status	NONE	UPDATED
Data mode	VFAINT	VFAINT	On-chip summing requested	N	N
Observation mode	POINTING	POINTING	Subarray requested	NONE	NONE
Pointing RA	24.447871	24.43797940565792	Alternating exposures requested	N	N
Pointing Dec	-12.921520	-12.89592594429655	Primary exposure time	0.000000	3.1
Pointing Roll	80.179977	80.38644812377508			
Roll angle	75.000000	75.000000			
Roll tolerance	10.000000	10.000000			
Roll constraint allows 180D rotation	Y	Y			
SIM focus pos (mm)	-0.782348	-0.7809083437167272			
SIM defocus (mm)	0	0.001439871863259334			
SIM translation stage pos (mm)	-233.592463	-233.5874344608287			
SIM translation stage offset (mm)	0	-0.005018542100998502			
Observation start time	211194434.184000	211192413.90059			
Observation start date	2004-09-10T09:06:10	2004-09-10T08:33:33			
Observation end time	211239934.184000	211241409.92778			
Observation end date	2004-09-10T21:44:30	2004-09-10T22:10:09			
Read mode	TIMED	TIMED			

2.3 Aspect



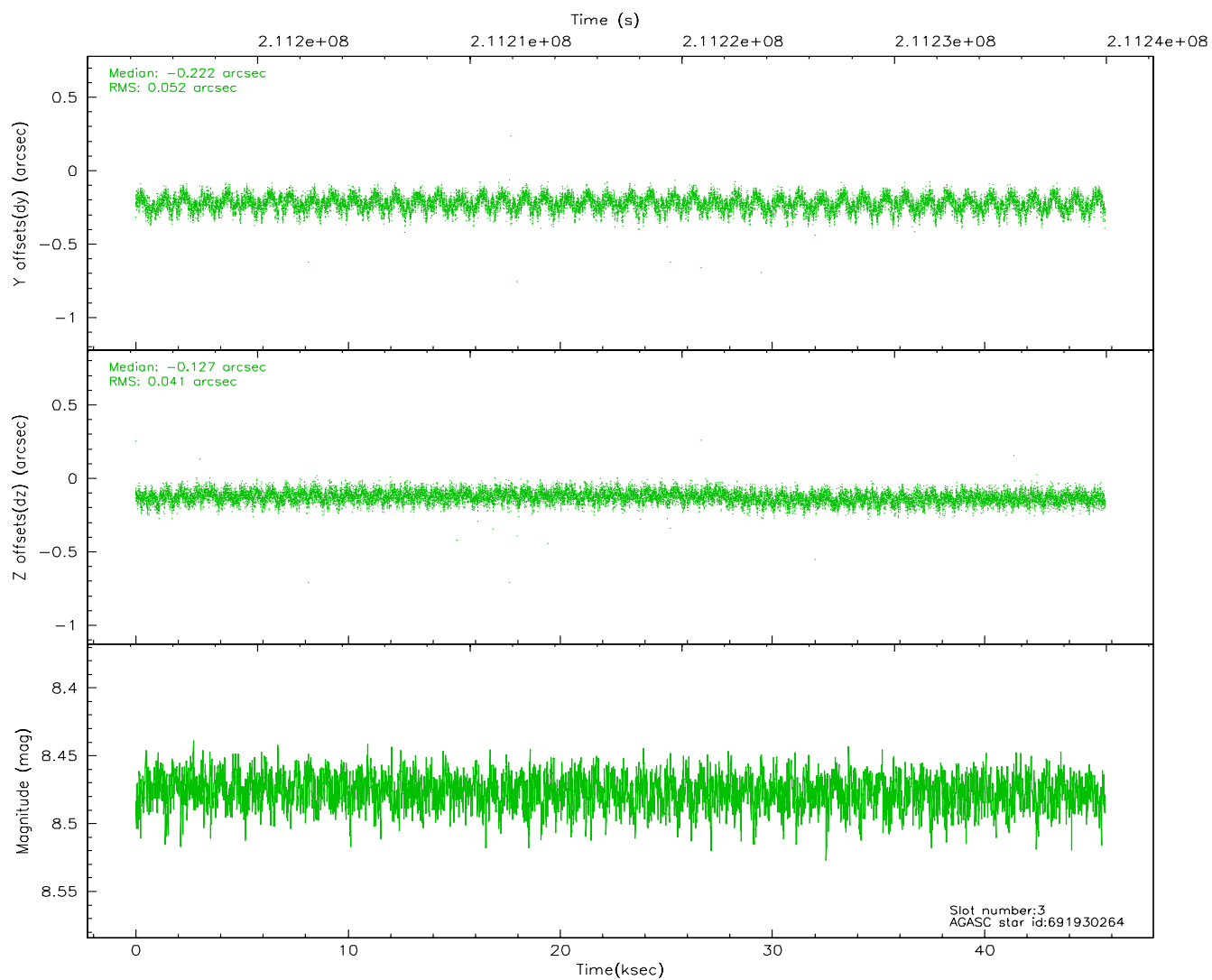
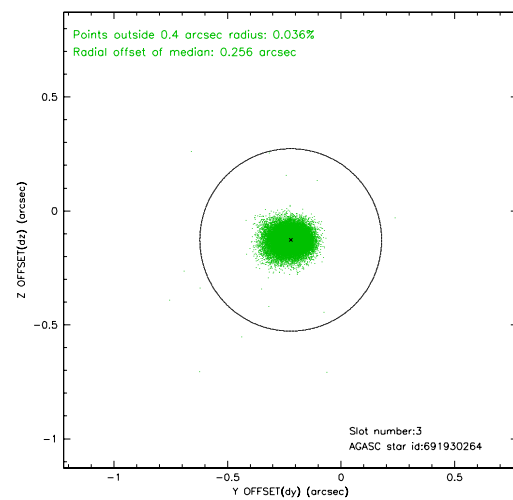
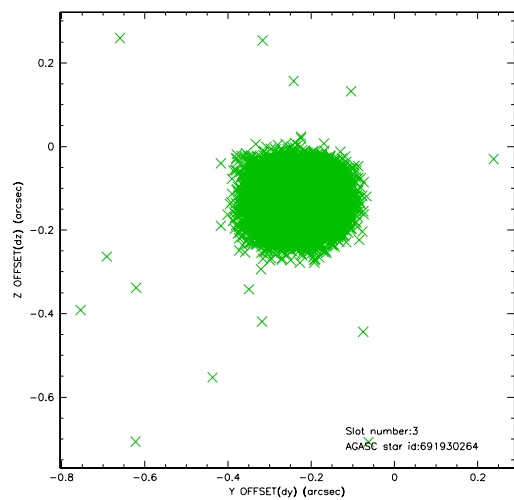


Slot Statistics

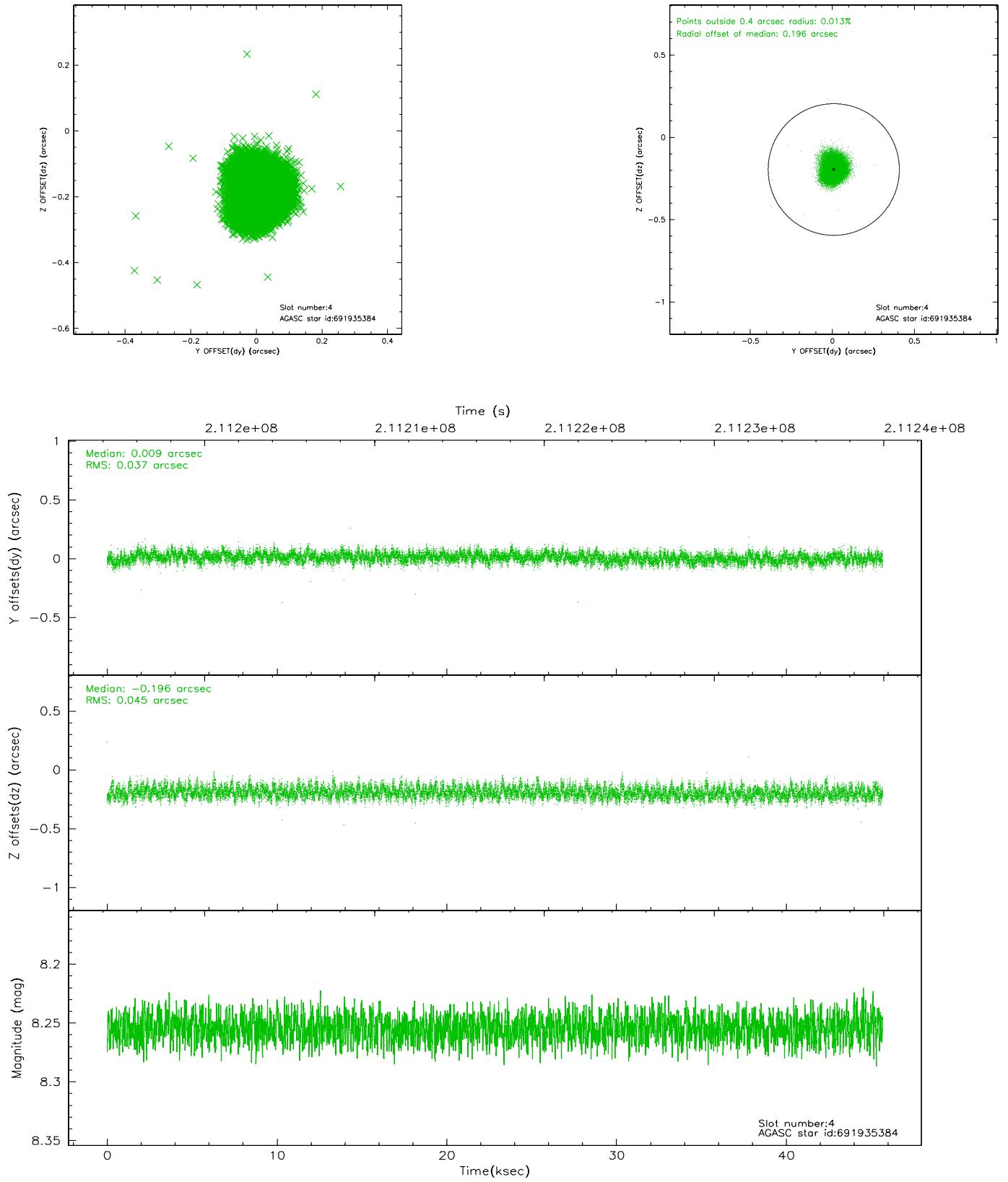
slot	status	id	mag	n_pts	med_dy	med_dz	dr1	dr2	ra	dec	mean_y	mean_z
0	FID	ACIS-I-1	7.24	11142	0.015	0.046	0.014	0.022	0.000000	0.000000	935.01	-831.64
1	FID	ACIS-I-5	7.23	11142	-0.146	0.048	0.011	0.018	0.000000	0.000000	-1813.26	1065.85
2	FID	ACIS-I-6	7.25	11142	0.039	-0.026	0.010	0.015	0.000000	0.000000	400.59	1710.27
3	GUIDE	691930264	8.48	22278	-0.222	-0.127	0.070	0.113	24.097108	-12.733000	457.82	1329.35
4	GUIDE	691935384	8.25	22285	0.009	-0.196	0.062	0.100	24.362037	-12.440919	1653.63	592.47
5	GUIDE	691935432	9.13	22274	-0.008	0.061	0.068	0.113	24.661372	-12.639758	1127.49	-565.70
6	GUIDE	691937960	9.80	22242	0.044	0.186	0.105	0.172	25.047145	-13.440657	-1485.70	-2386.60
7	GUIDE	691942320	9.44	22275	0.178	0.078	0.092	0.148	24.887668	-13.538925	-1928.34	-1896.01

2.4 Star Slots

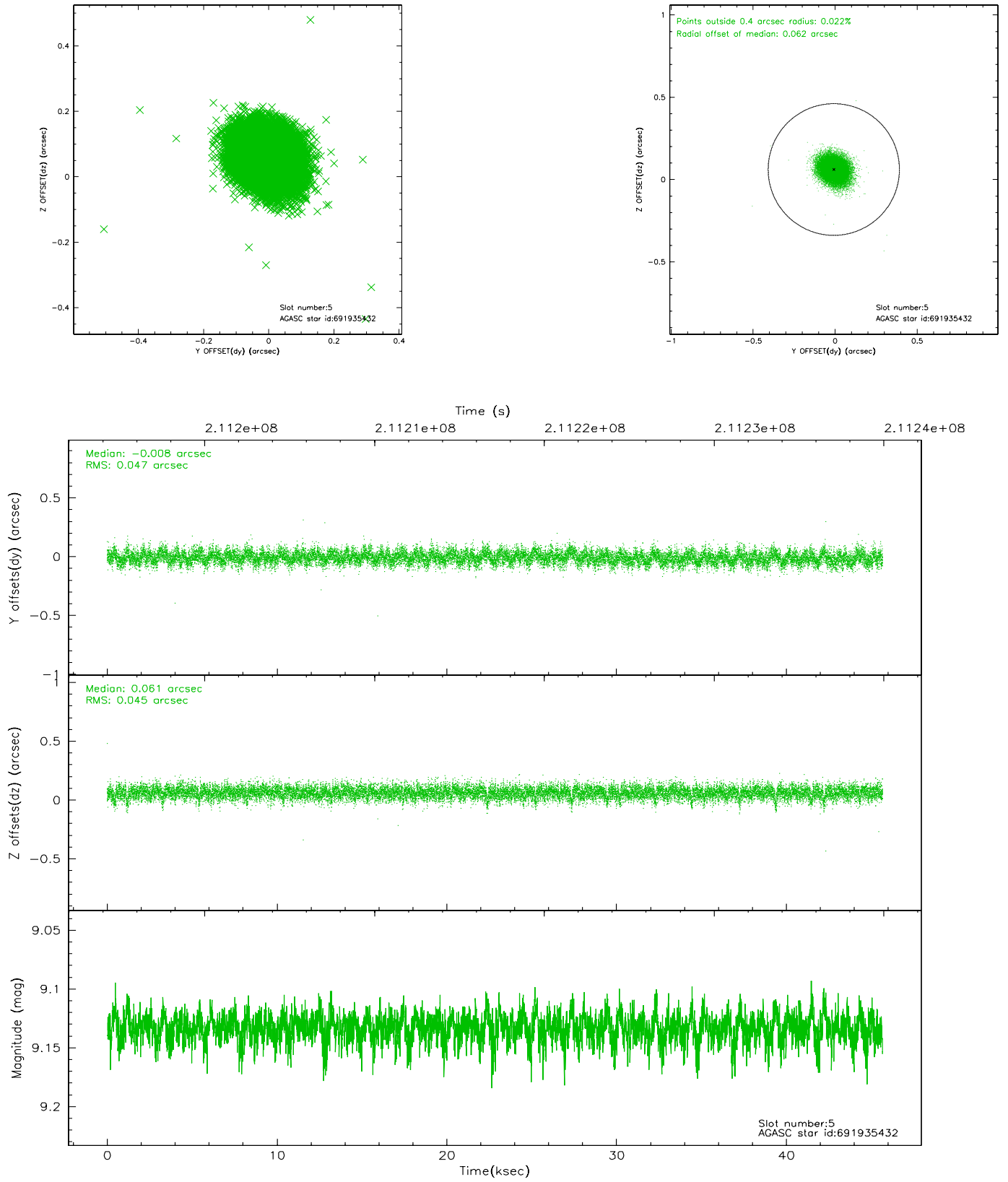
2.4.1 Slot 3



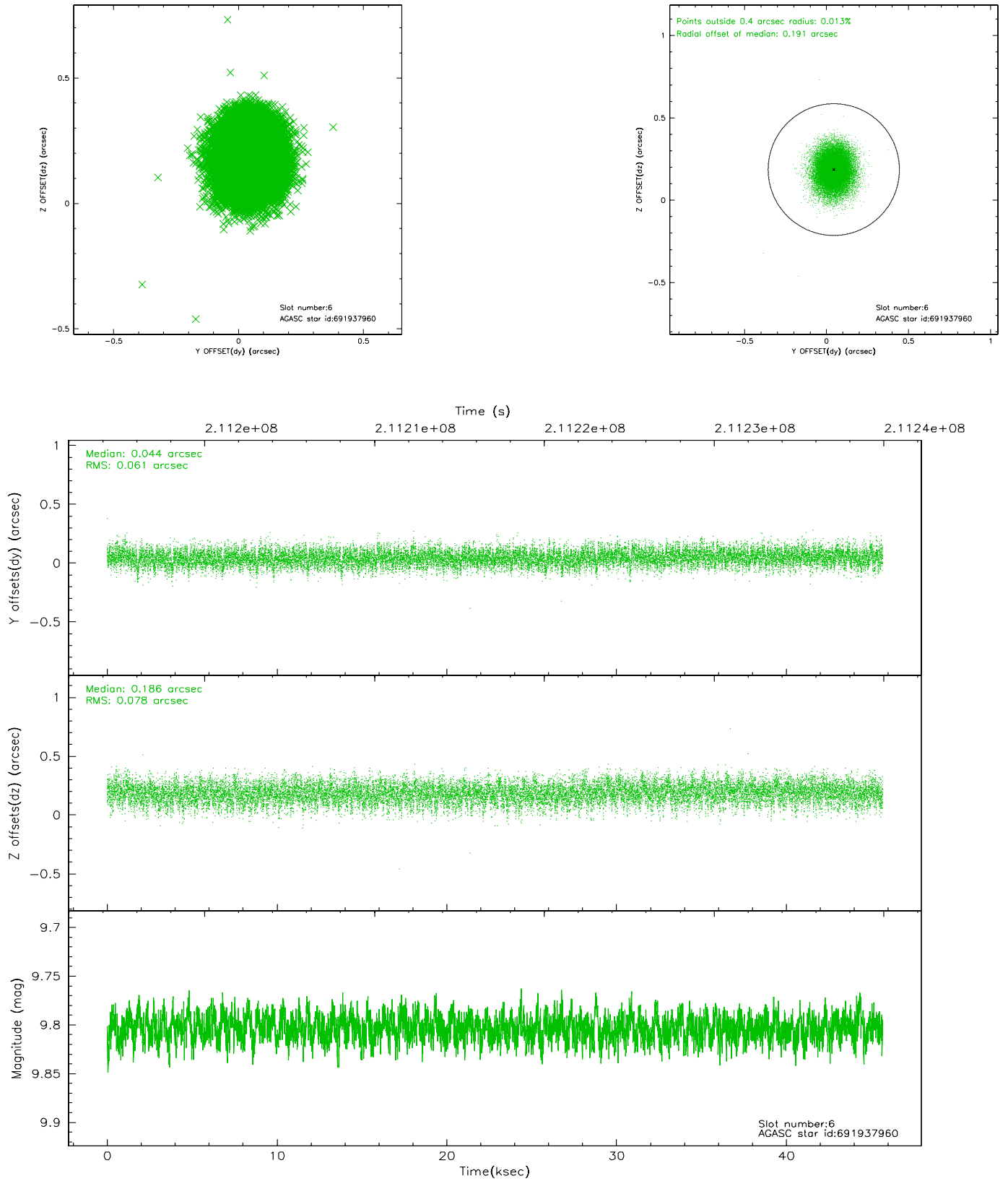
2.4.2 Slot 4



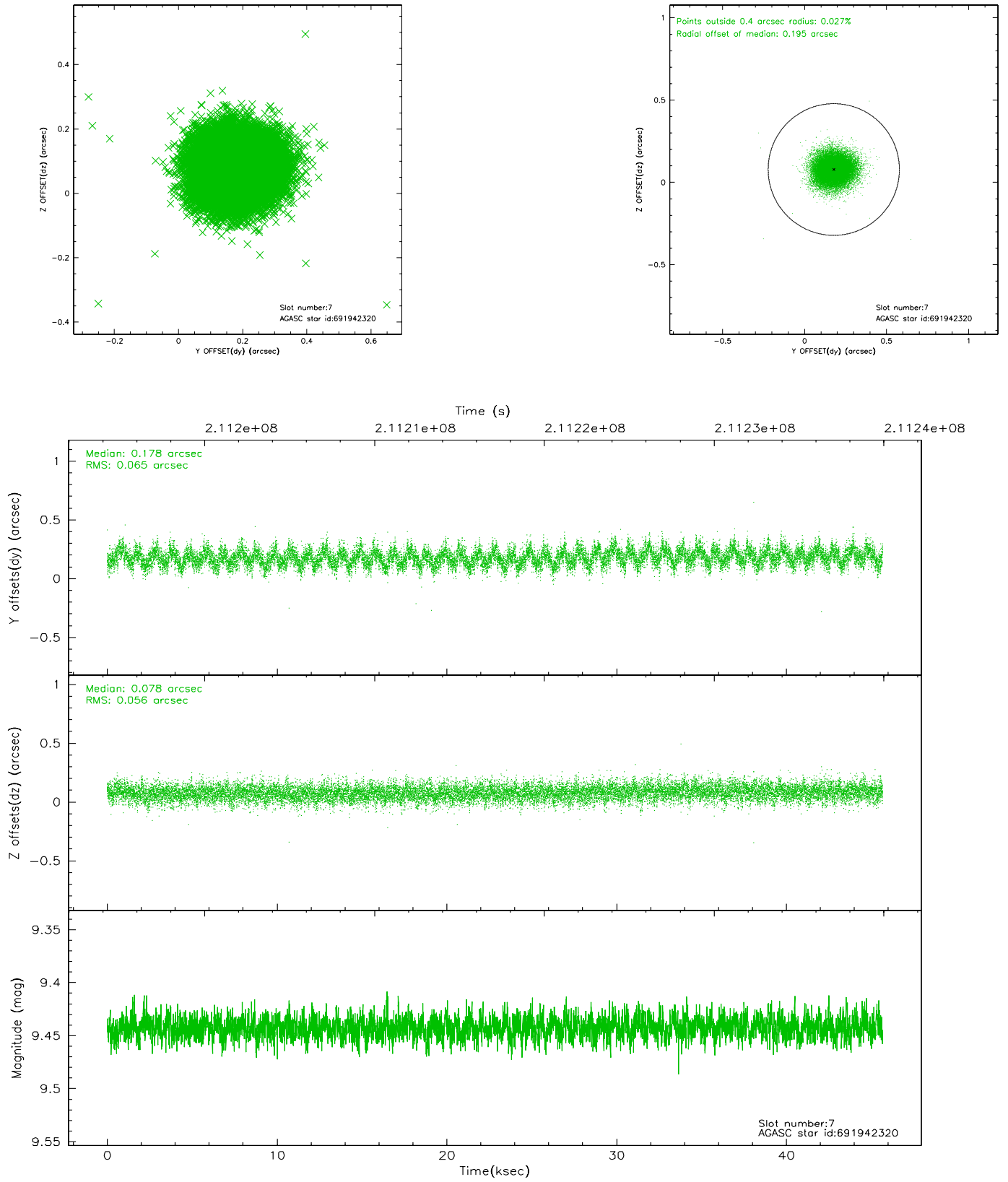
2.4.3 Slot 5



2.4.4 Slot 6

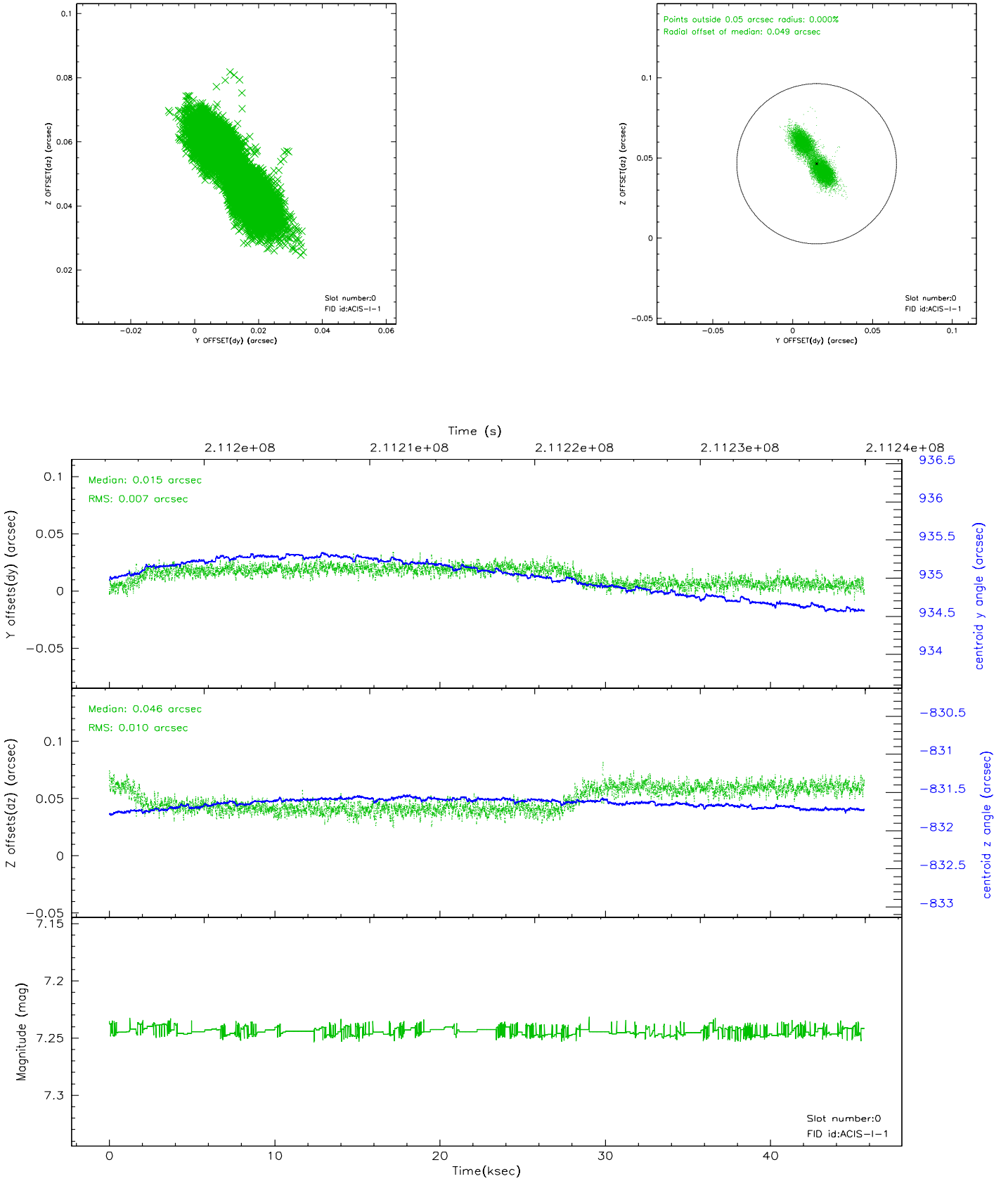


2.4.5 Slot 7

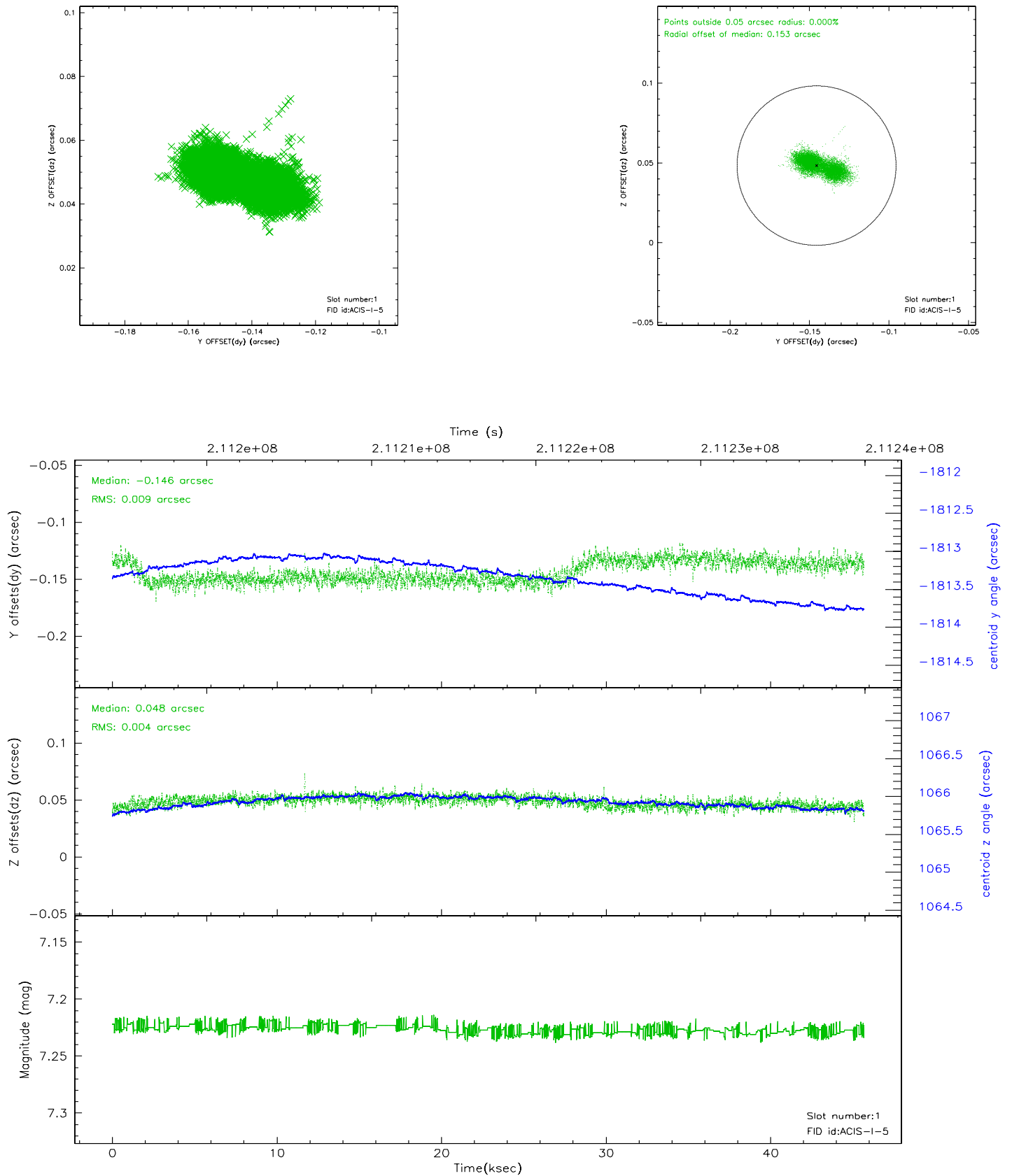


2.5 FID Slots

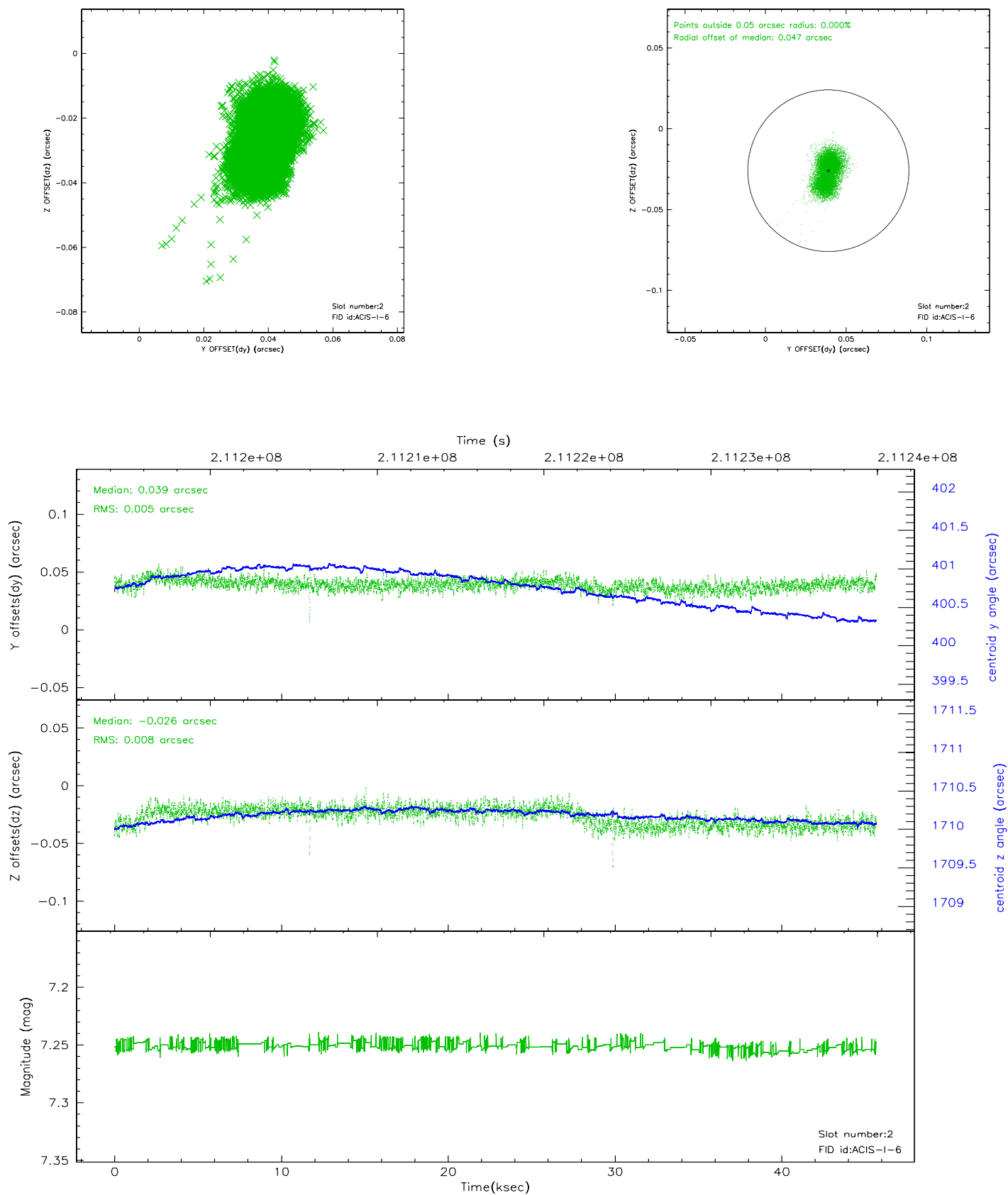
2.5.1 Slot 0



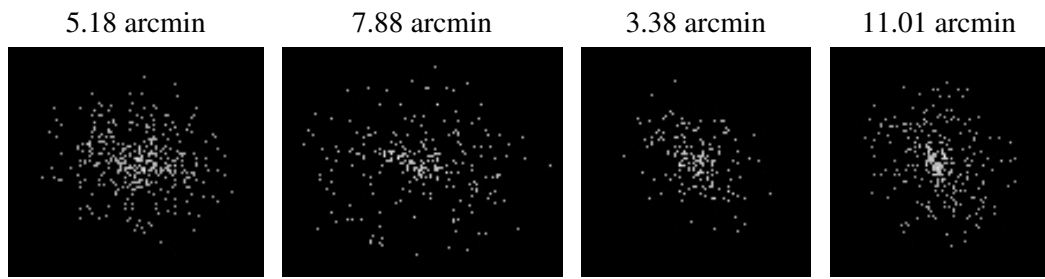
2.5.2 Slot 1



2.5.3 Slot 2



3 Point Sources



A Summary

A.1 Status

V&V Scientist	Jen Lauer
V&V Date (YYYY-MM-DD)	2006.04.17
V&V Edition	1
V&V Disposition and Status	OK
V&V Charge Time	45.675

A.2 Comments

Roll constraint met.