

V&V Reference Report

L2 ASCDS Version : 7.6.7.2

Observation 4964 - L2 Version 001
Chandra X-Ray Center

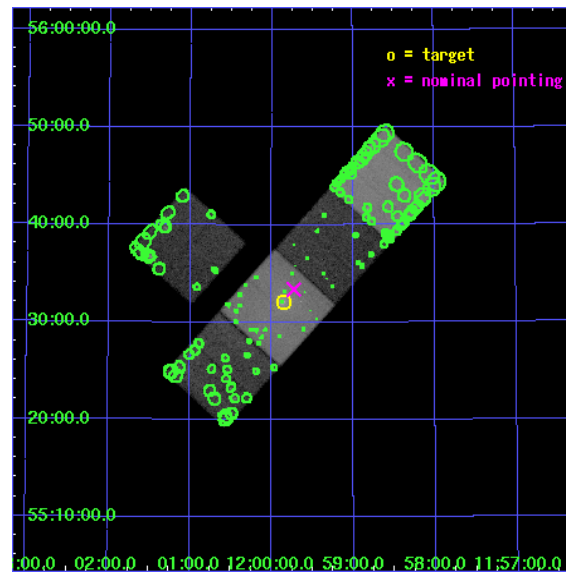
L2 Processing Date : Jun 2 2006

Contents

1	Front	2
2	OBI	3
2.1	OBI	3
2.1.1	Images	3
2.1.2	Bias	3
2.1.3	Parameters	4
2.1.4	Events	4
2.2	Compared Parameters	5
2.3	Aspect	6
2.4	Star Slots	9
2.4.1	Slot 3	9
2.4.2	Slot 4	10
2.4.3	Slot 5	11
2.4.4	Slot 6	12
2.4.5	Slot 7	13
2.5	FID Slots	14
2.5.1	Slot 0	14
2.5.2	Slot 1	15
2.5.3	Slot 2	16
3	Point Sources	17
A	Summary	18
A.1	Status	18
A.2	Comments	18

1 Front

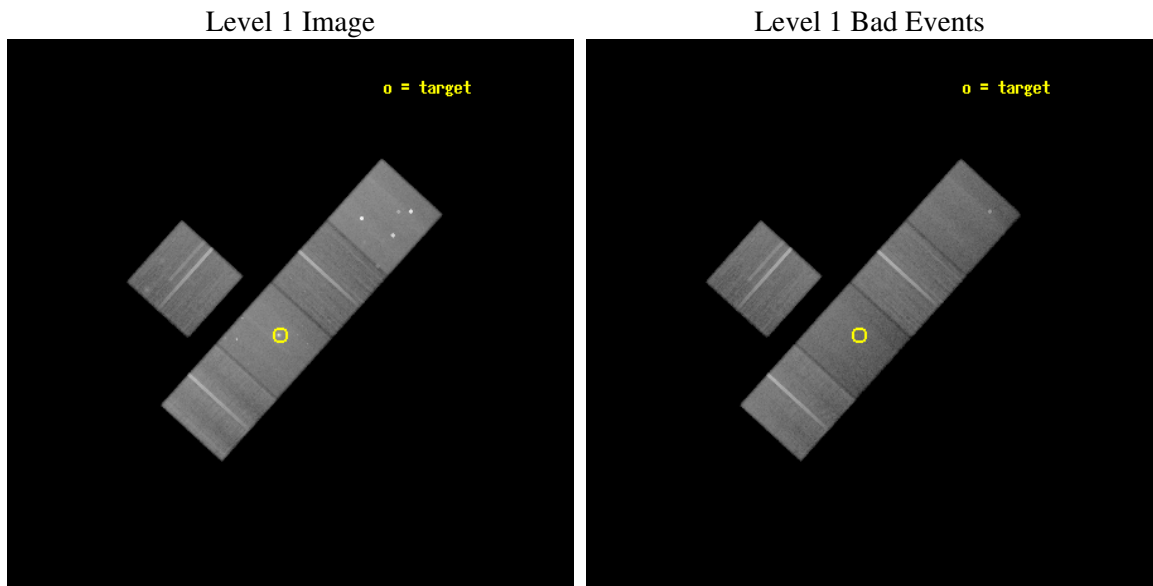
seq_num	800410
obs_id	4964
title	Shedding X-ray Light on ``Dark" Groups of Galaxies
observer	Prof. David Buote
object	RXJ 1159+5531
dtcycle	0
cycle	P
ra_targ	179.964167
dec_targ	55.533611
ra_nom	179.9320348352
dec_nom	55.55628707231
roll_nom	132.18340947826
revision	2
ontime	76101.858873427
livetime	75107.532061872
ontime3	76092.43589291
ontime5	76104.999853671
ontime6	76092.435892791
ontime7	76101.858873427
ontime8	76092.435882807
l2events	567310



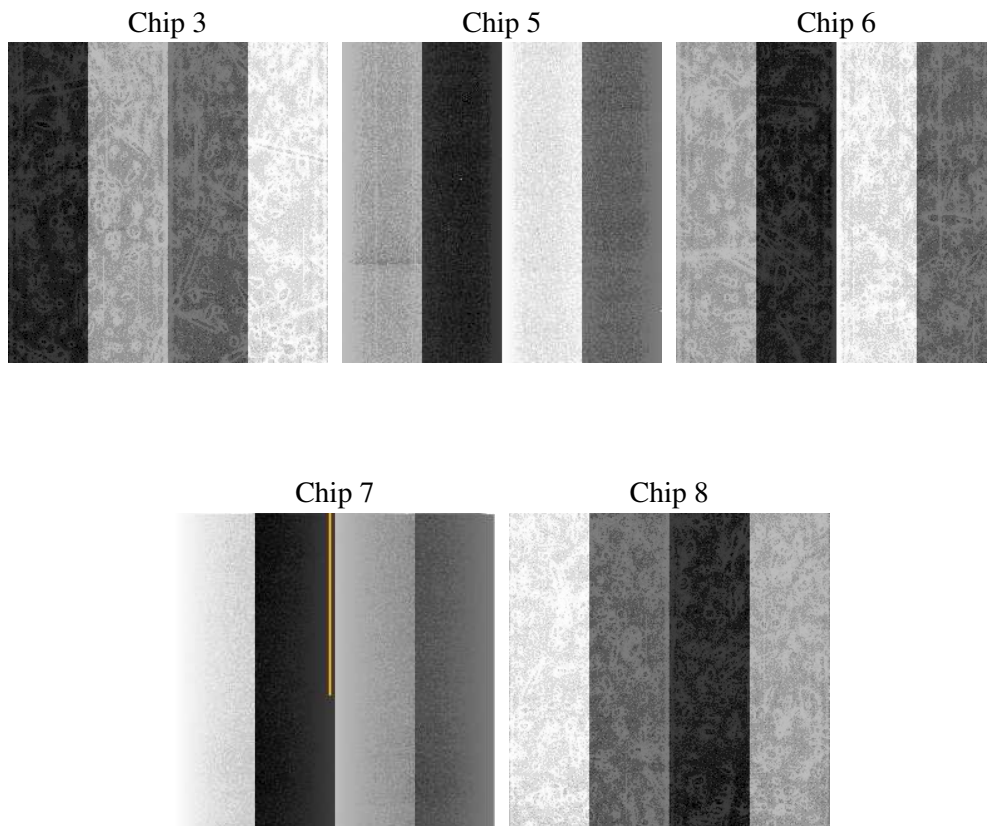
2 OBI

2.1 OBI

2.1.1 Images



2.1.2 Bias



2.1.3 Parameters

obi_num	0
ascdsver	7.6.7.2
caldbver	3.2.2
date	2006-06-02T11:08:00
revision	2

sched_exp_time	76000.000000
ontime	76106.678298742
ontime3	76097.255298316
ontime5	76109.819259077
ontime6	76097.255298197
ontime7	76106.678298742
ontime8	76097.255288213
l1events	2370097

2.1.4 Events

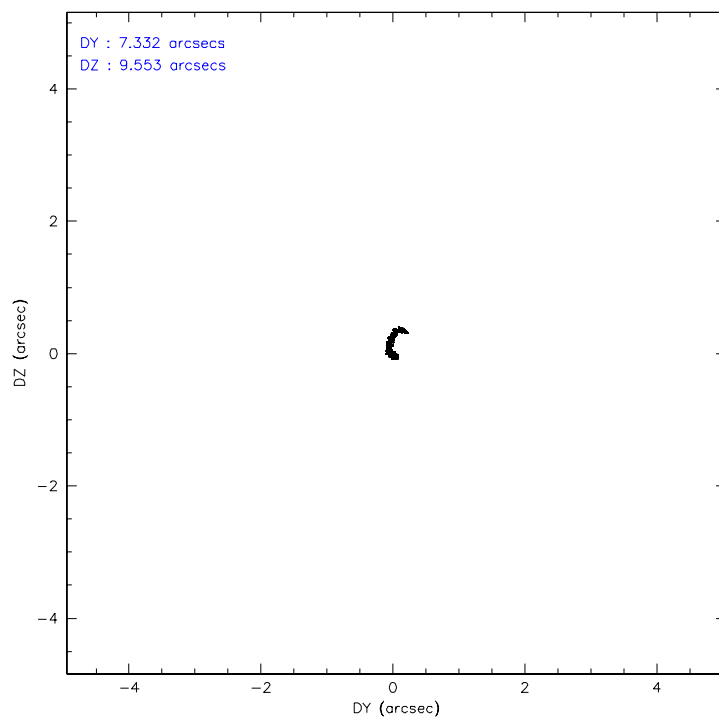
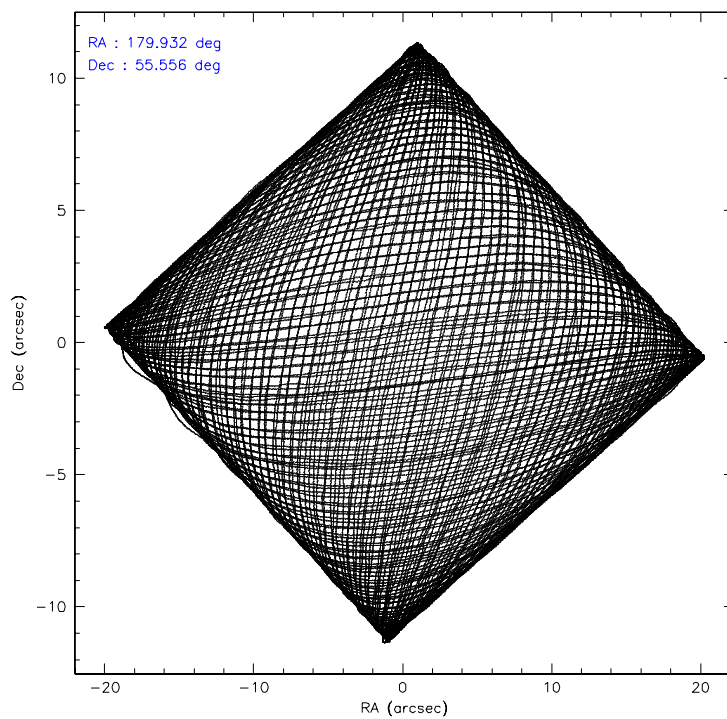
	ccd 3	ccd 5	ccd 6	ccd 7	ccd 8
level 1 events	395190	583469	410547	475933	504958
rejected events	356709	289120	367871	264183	391355
rejected %	90%	49%	89%	55%	77%

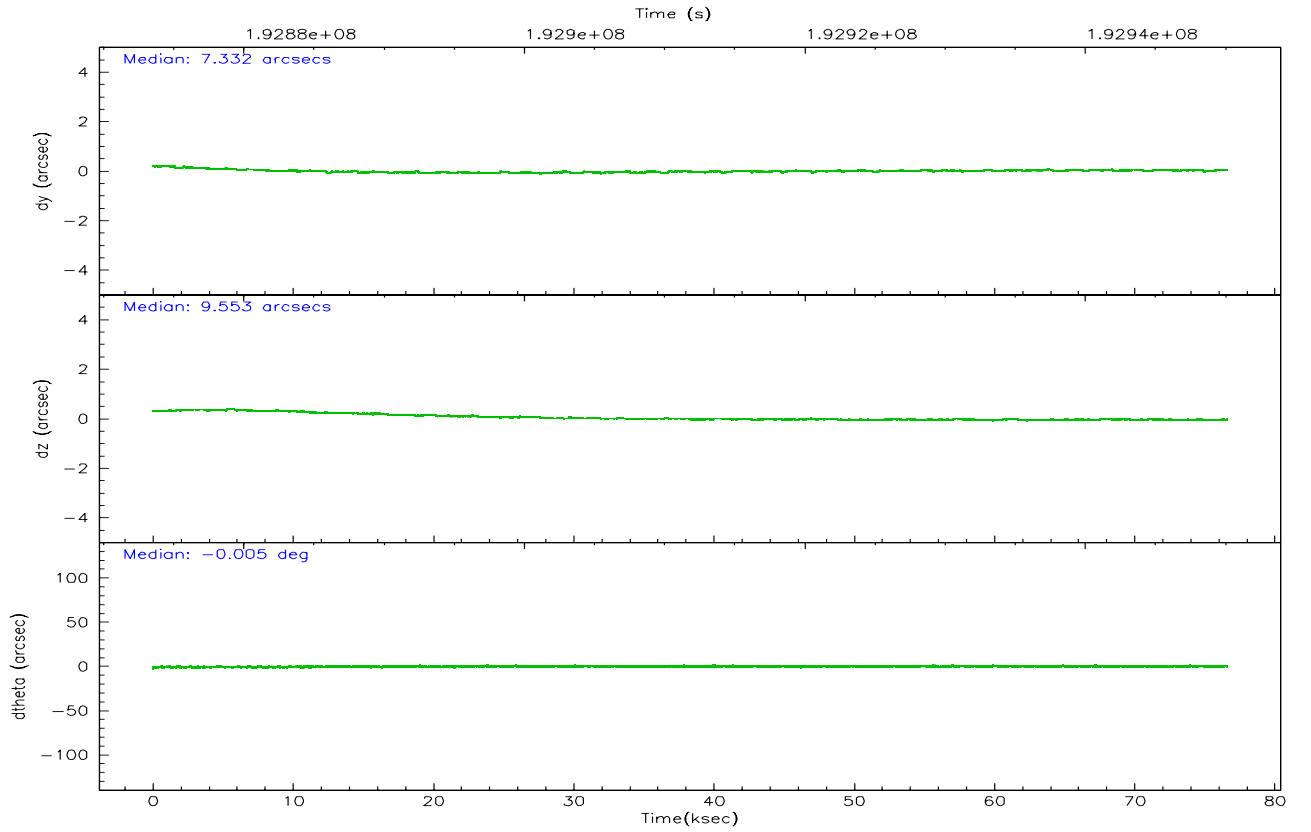
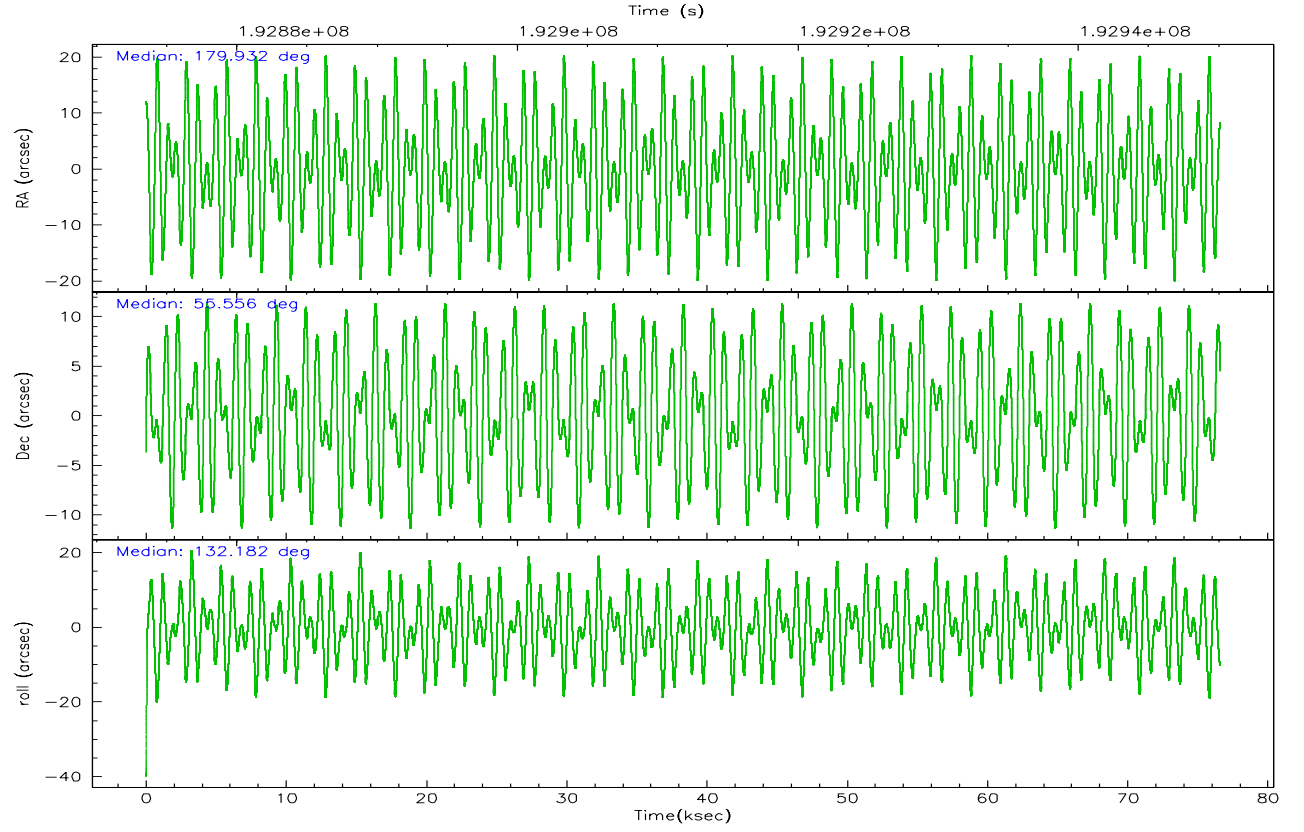
	ccd 3	ccd 5	ccd 6	ccd 7	ccd 8
grade 0 events	13919	47484	15205	18697	35024
	3%	8%	3%	3%	6%
grade 1 events	200	1520	191	221	356
	0%	0%	0%	0%	0%
grade 2 events	8097	85580	9109	52795	24814
	2%	14%	2%	11%	4%
grade 3 events	4503	6995	4765	13716	12461
	1%	1%	1%	2%	2%
grade 4 events	4424	6770	4664	13141	11912
	1%	1%	1%	2%	2%
grade 5 events	15616	29602	16543	35094	23284
	3%	5%	4%	7%	4%
grade 6 events	7540	147537	8937	113405	29396
	1%	25%	2%	23%	5%
grade 7 events	340891	257981	351133	228864	367711
	86%	44%	85%	48%	72%

2.2 Compared Parameters

Parameter	Planned	Actual	Parameter	Planned	Actual
Instrument	ACIS	ACIS	Obspar format version number	6	6
Detector	ACIS-35678	ACIS-35678	Obspar file type	PREDICTED	ACTUAL
Grating	NONE	NONE	Obspar update status	NONE	UPDATED
Data mode	VFAINT	VFAINT	On-chip summing requested	N	N
Observation mode	POINTING	POINTING	Subarray requested	NONE	NONE
Pointing RA	179.978049	179.9320348351967	Alternating exposures requested	N	N
Pointing Dec	55.548312	55.55628707231007	Primary exposure time	0.000000	3.1
Pointing Roll	131.988840	132.1834094782619			
SIM focus pos (mm)	-0.684267	-0.6828225247311905			
SIM defocus (mm)	0	0.001444936568705701			
SIM translation stage pos (mm)	-190.132523	-190.1400660498719			
SIM translation stage offset (mm)	0	0.00754346686406393			
Observation start time	192874108.184000	192872942.74121			
Observation start date	2004-02-11T08:07:24	2004-02-11T07:49:02			
Observation end time	192950108.184000	192950862.73212			
Observation end date	2004-02-12T05:14:04	2004-02-12T05:27:42			
Read mode	TIMED	TIMED			

2.3 Aspect



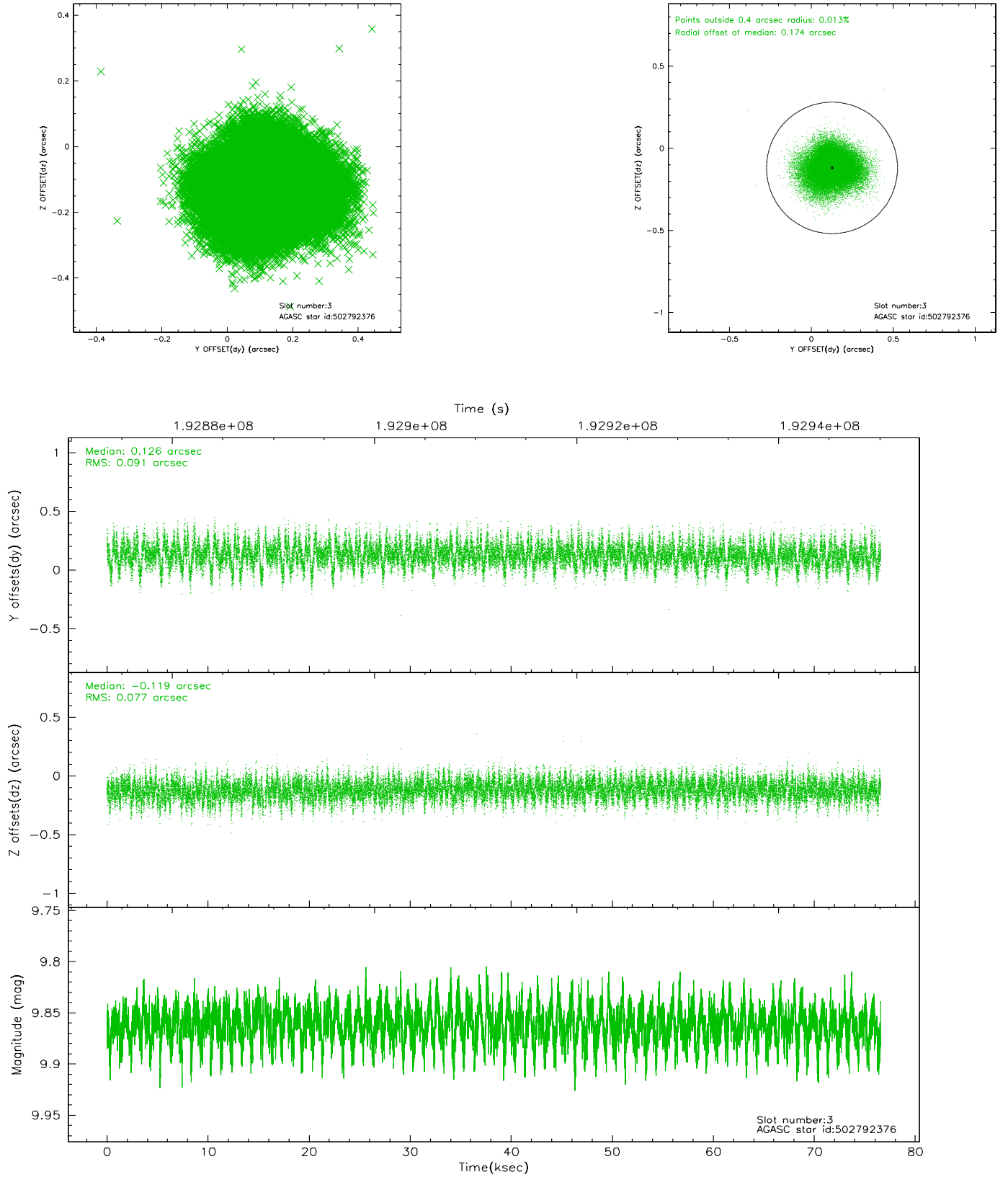


Slot Statistics

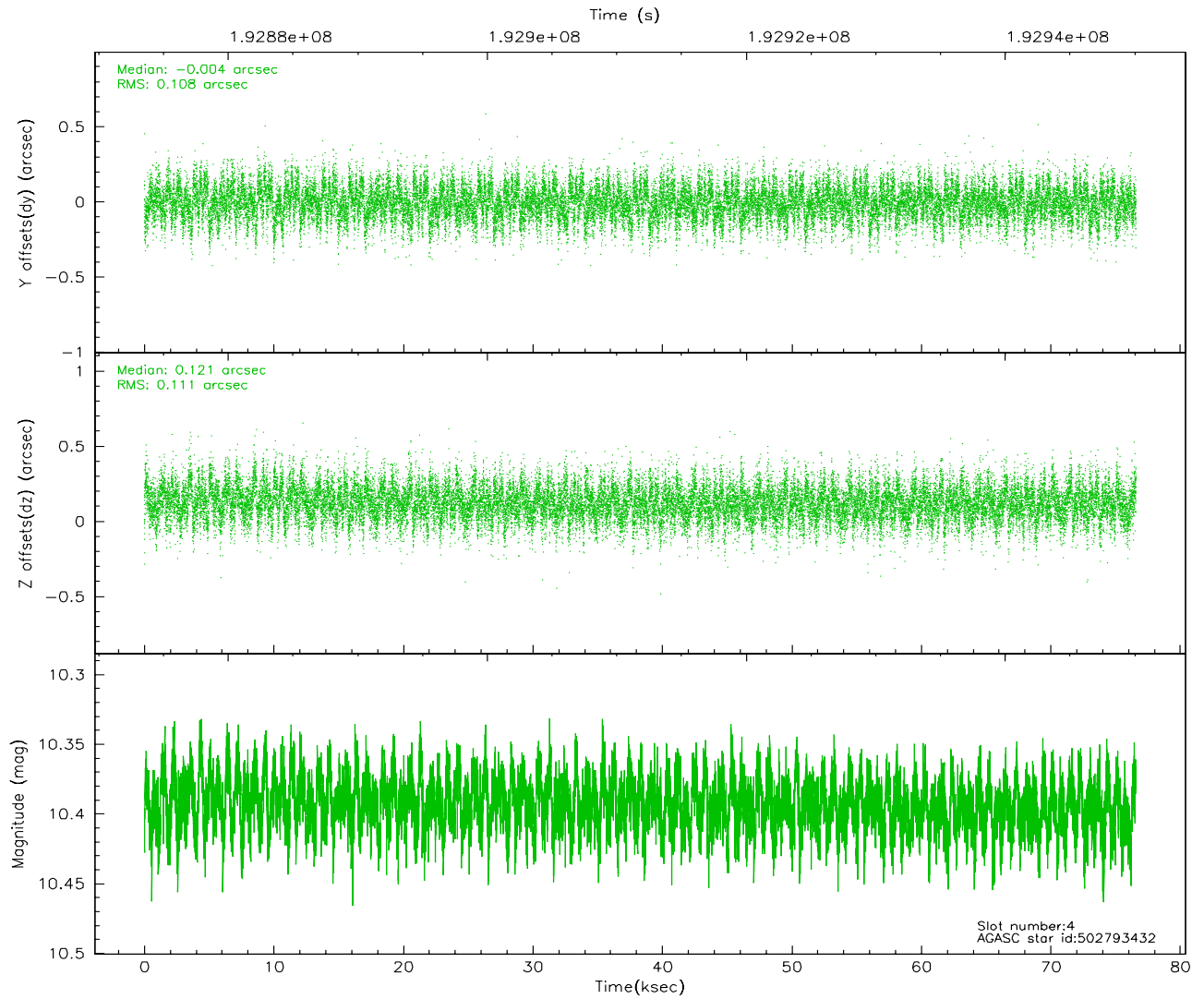
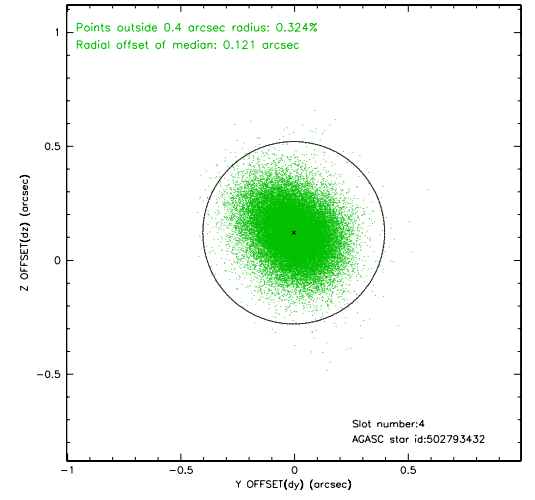
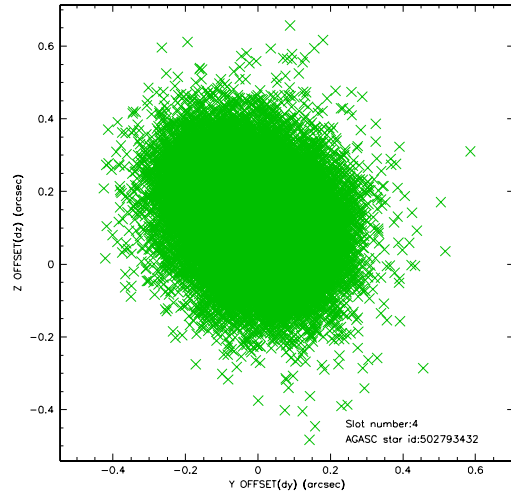
slot	status	id	mag	n_pts	med_dy	med_dz	dr1	dr2	ra	dec	mean_y	mean_z
0	FID	ACIS-S-2	7.10	18677	-0.032	-0.005	0.005	0.010	0.000000	0.000000	-760.10	-1730.87
1	FID	ACIS-S-4	7.20	18677	0.033	0.019	0.006	0.010	0.000000	0.000000	2153.24	177.74
2	FID	ACIS-S-6	7.35	18678	-0.029	-0.006	0.007	0.012	0.000000	0.000000	401.76	815.01
3	GUIDE	502792376	9.86	37260	0.126	-0.119	0.128	0.208	180.437493	55.132253	-1743.19	297.12
4	GUIDE	502793432	10.39	37312	-0.004	0.121	0.163	0.272	181.325466	55.427686	-2144.01	-1772.88
5	GUIDE	502793960	9.55	37327	-0.027	-0.065	0.110	0.172	179.393376	55.531414	755.61	922.80
6	GUIDE	502795632	9.08	37339	-0.067	-0.024	0.076	0.122	180.454171	55.827001	104.21	-1388.86
7	GUIDE	502796064	9.72	37331	-0.026	0.088	0.097	0.156	178.783977	55.701683	2046.49	1417.33

2.4 Star Slots

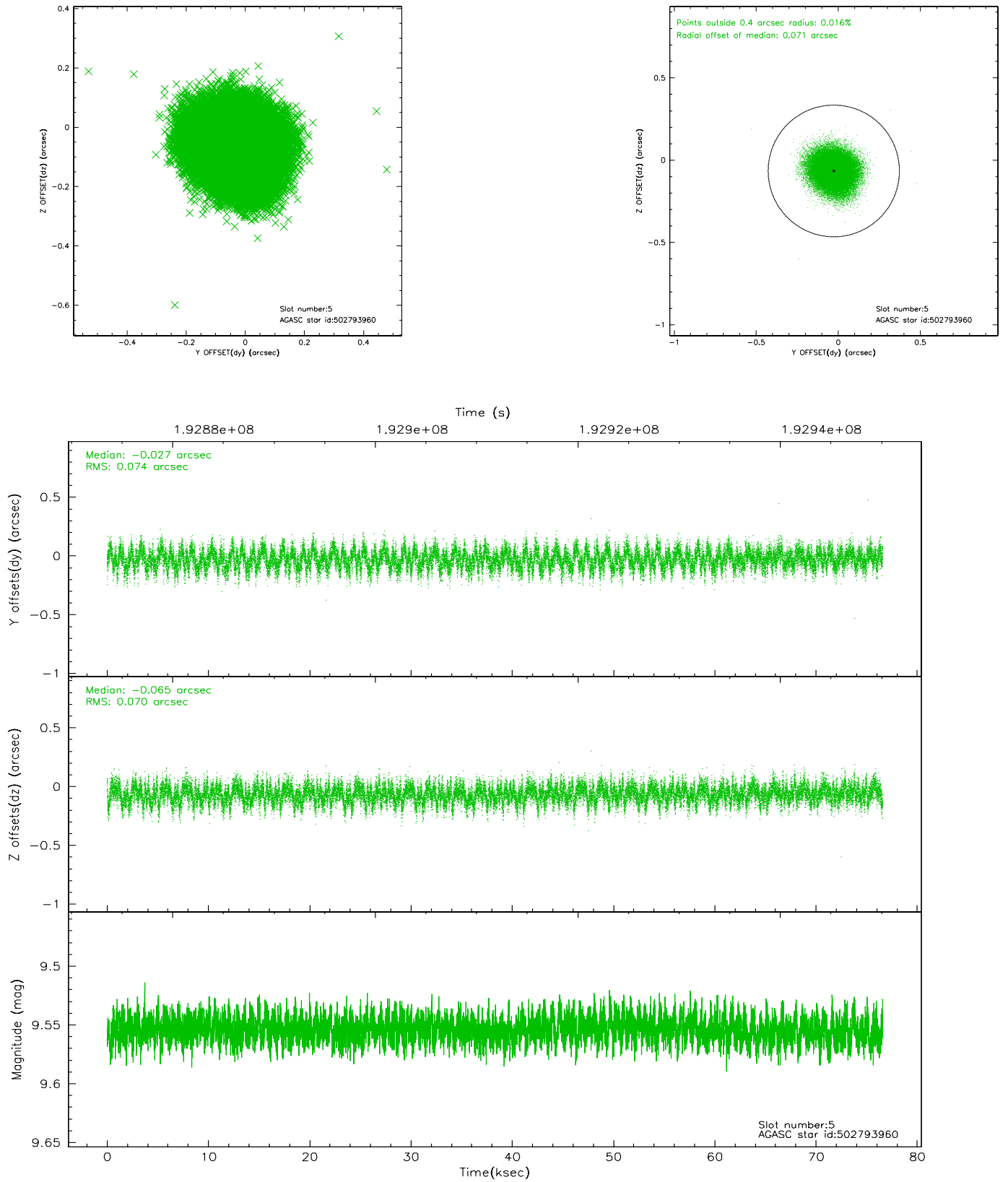
2.4.1 Slot 3



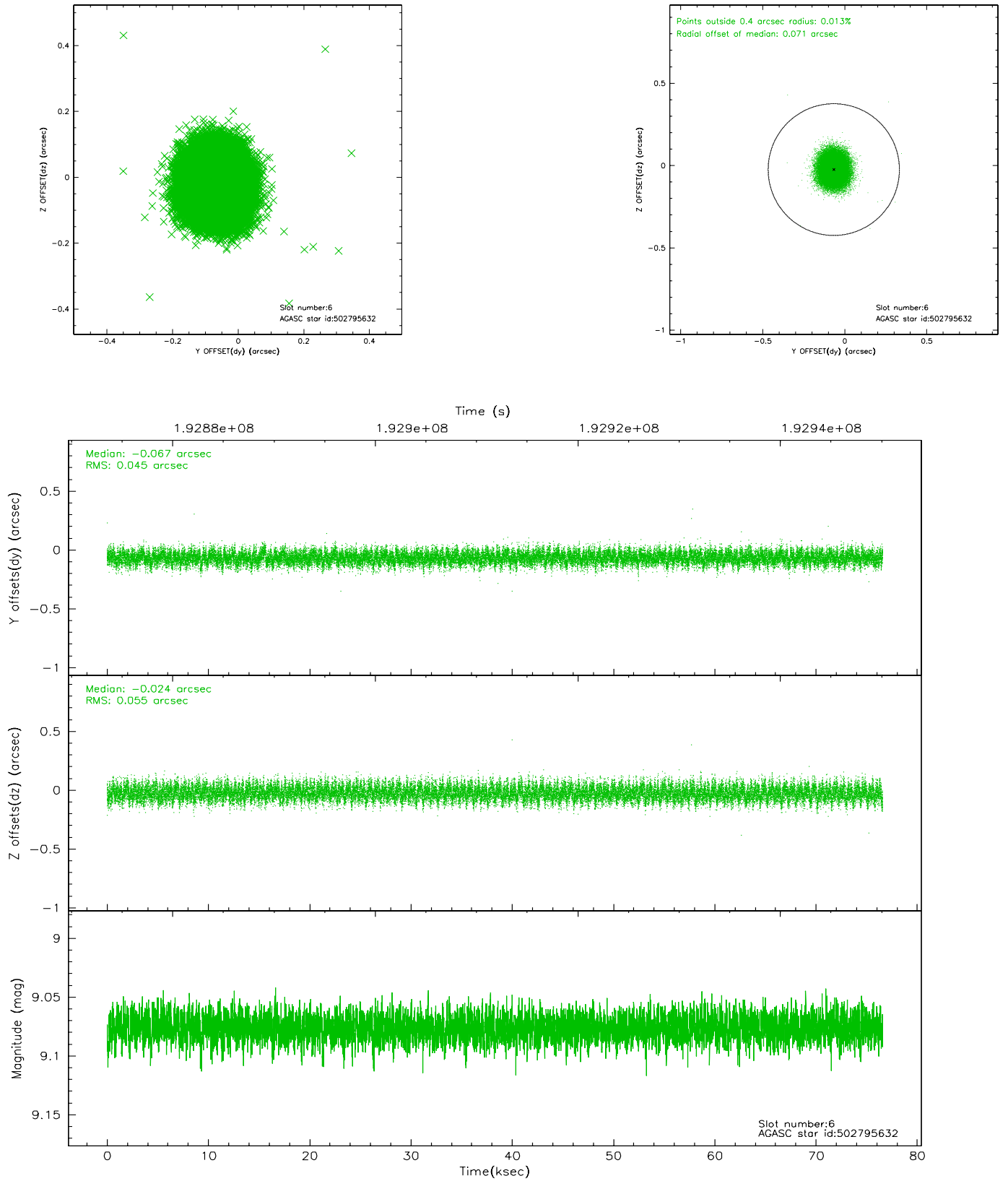
2.4.2 Slot 4



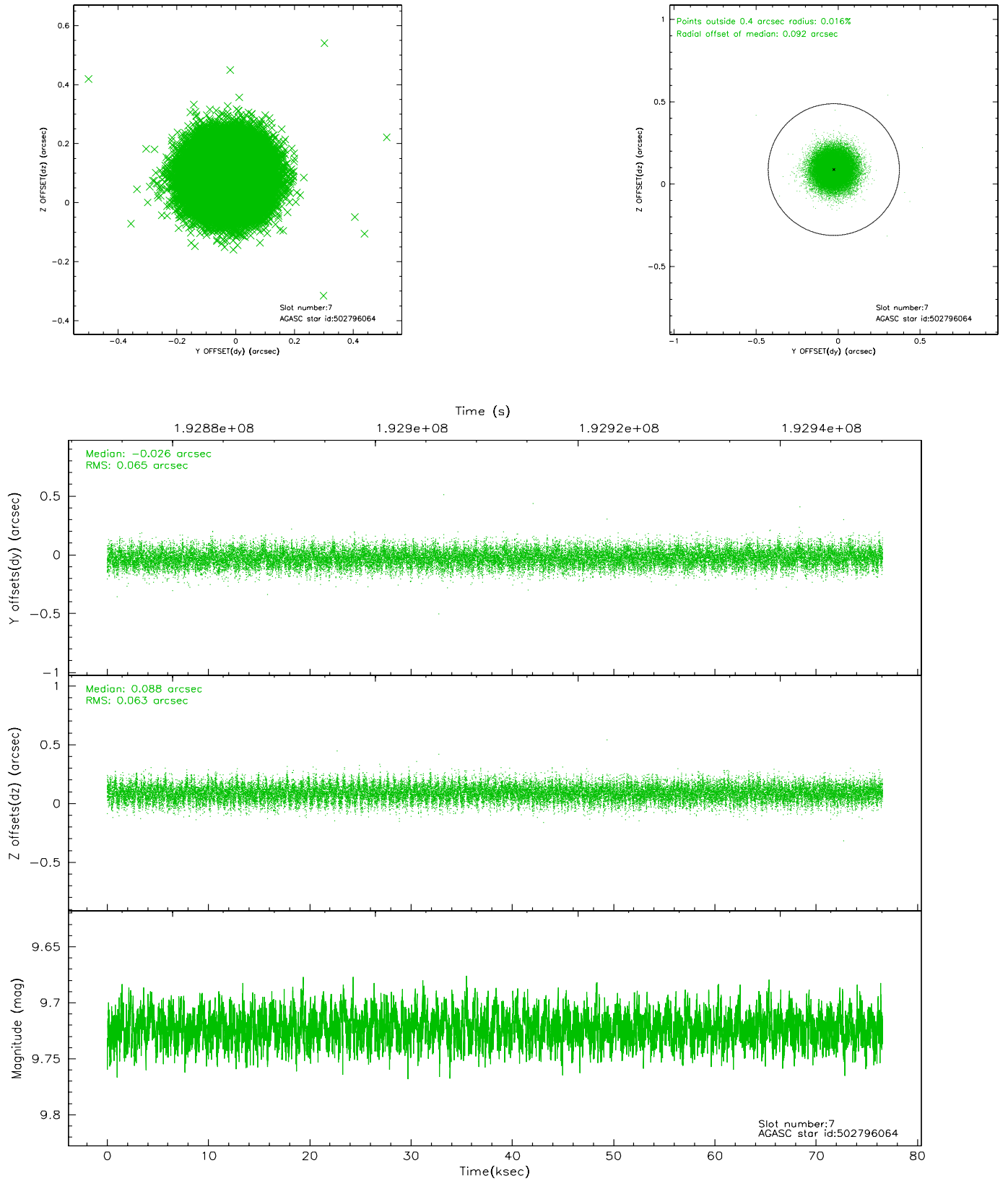
2.4.3 Slot 5



2.4.4 Slot 6

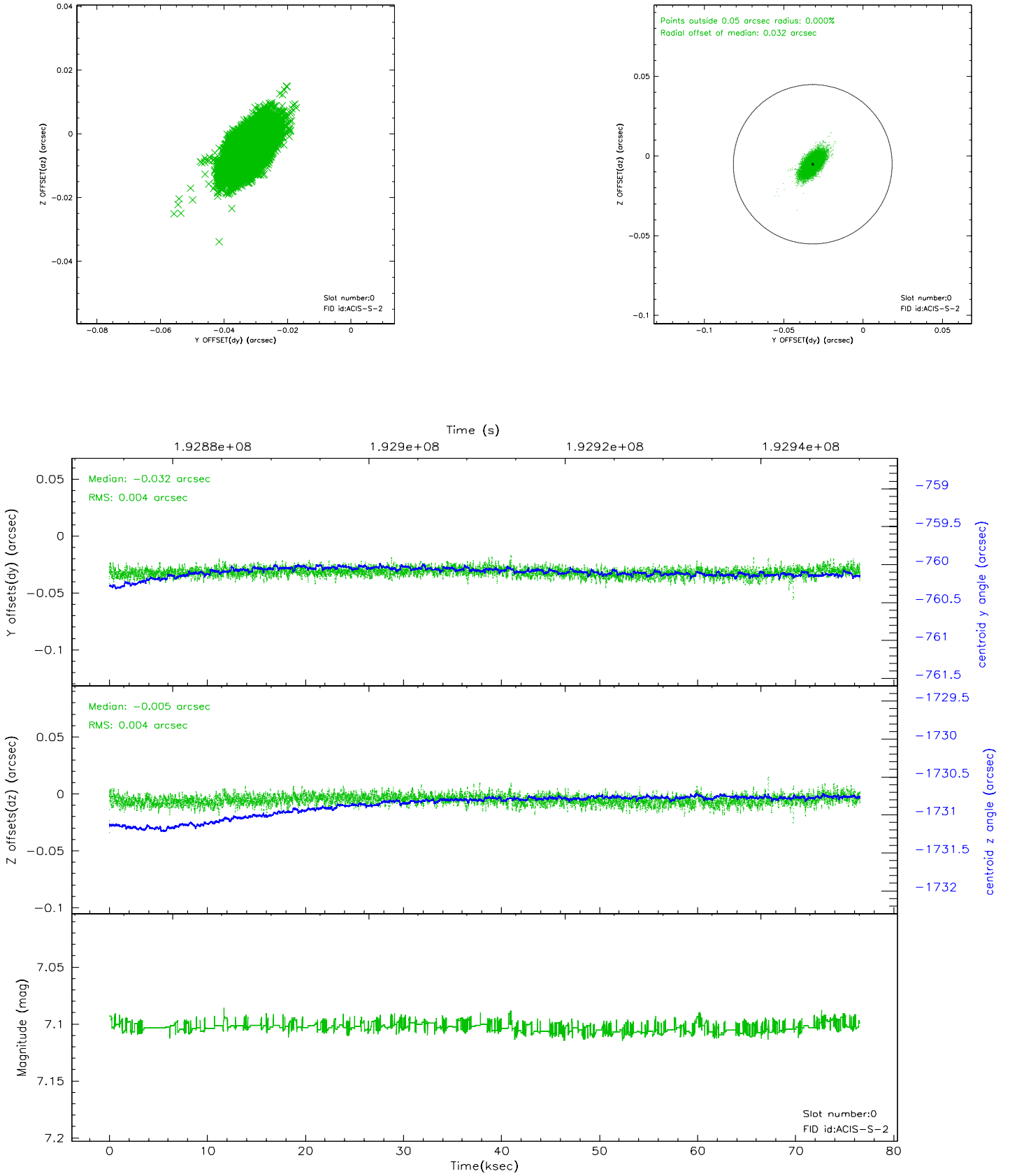


2.4.5 Slot 7

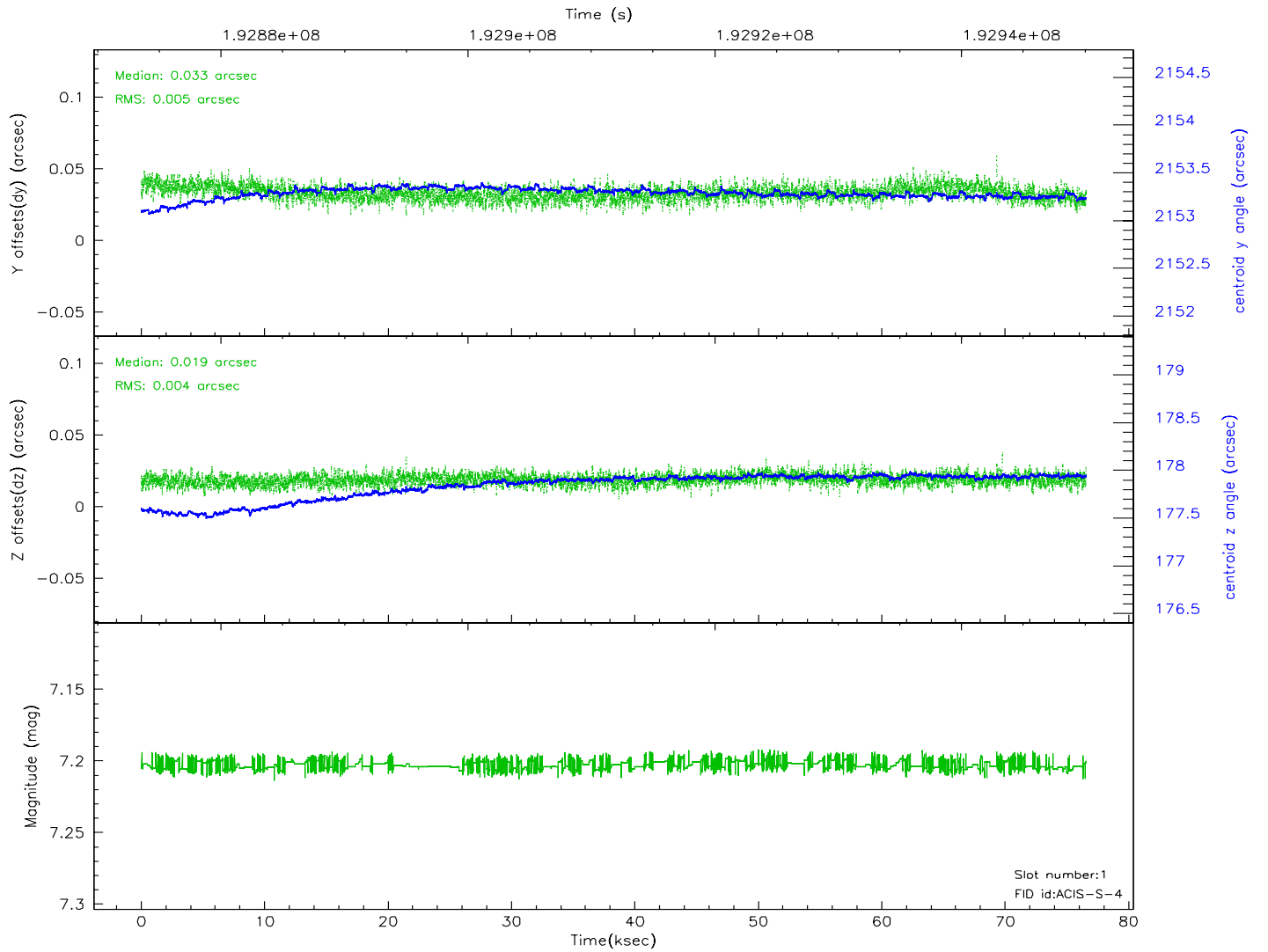
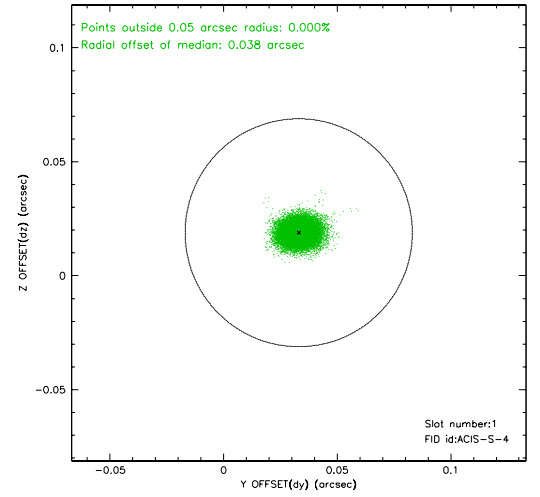
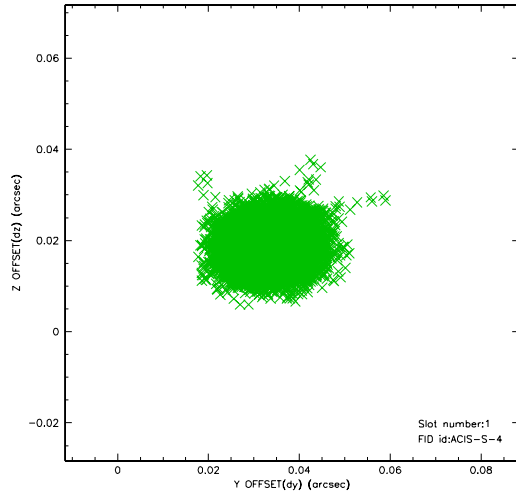


2.5 FID Slots

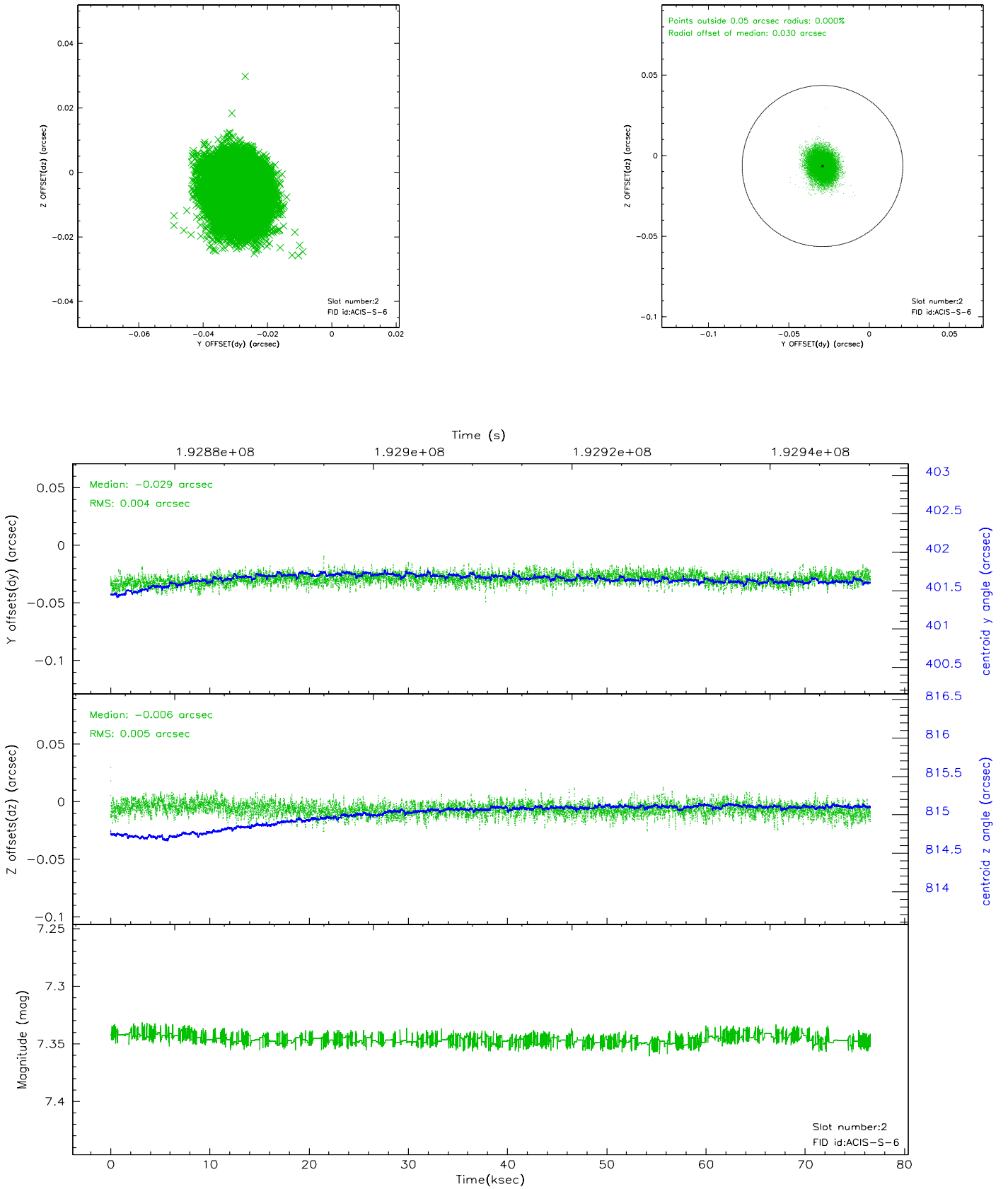
2.5.1 Slot 0



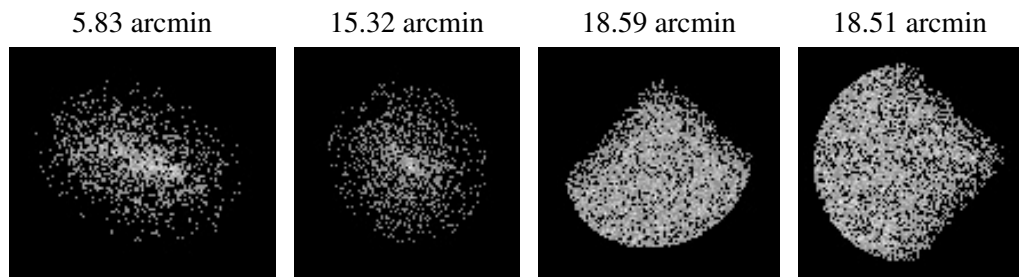
2.5.2 Slot 1



2.5.3 Slot 2



3 Point Sources



A Summary

A.1 Status

V&V Scientist	Joy Nichols
V&V Date (YYYY-MM-DD)	2006.06.02
V&V Edition	1
V&V Disposition and Status	OK
V&V Charge Time	76.095

A.2 Comments