

V&V Reference Report

L2 ASCDS Version : 7.6.7

Observation 4963 - L2 Version 002
Chandra X-Ray Center

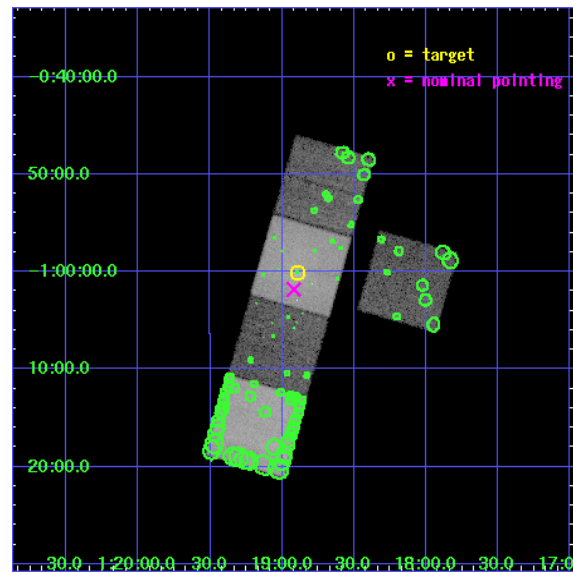
L2 Processing Date: Feb 23 2006

Contents

1	Front	2
2	OBI	3
2.1	OBI	3
2.1.1	Images	3
2.1.2	Bias	3
2.1.3	Parameters	4
2.1.4	Events	4
2.2	Compared Parameters	5
2.3	Aspect	6
2.4	Star Slots	9
2.4.1	Slot 3	9
2.4.2	Slot 4	10
2.4.3	Slot 5	11
2.4.4	Slot 6	12
2.4.5	Slot 7	13
2.5	FID Slots	14
2.5.1	Slot 0	14
2.5.2	Slot 1	15
2.5.3	Slot 2	16
3	Point Sources	17
A	Summary	18
A.1	Status	18
A.2	Comments	18

1 Front

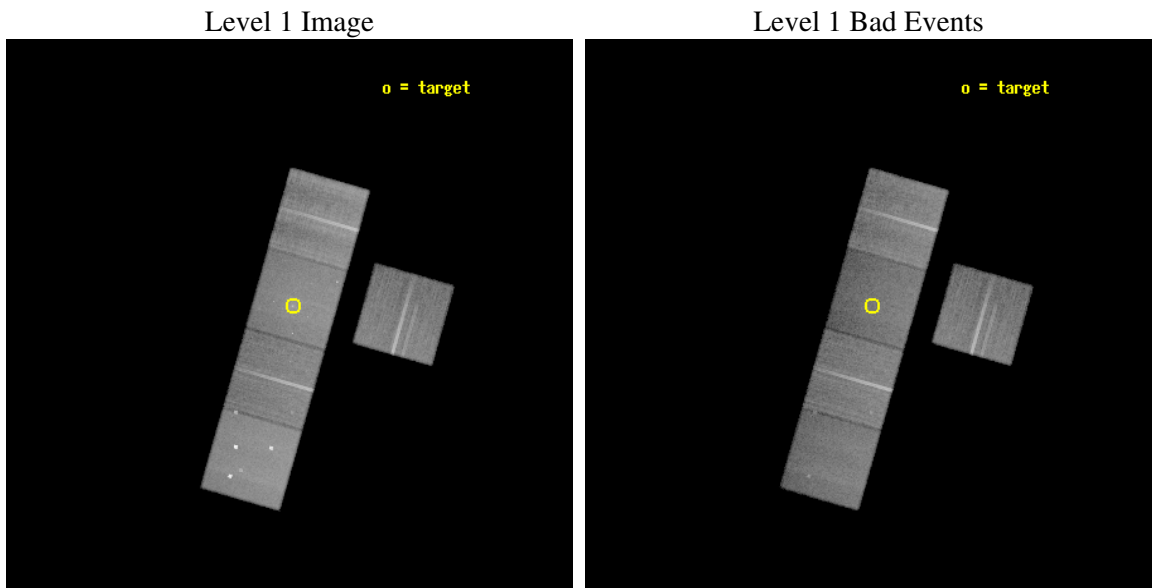
seq_num	800409
obs_id	4963
title	Shedding X-ray Light on ``Dark" Groups of Galaxies
observer	Dr. David Buote
object	MS 0116.3-0115
dtcycle	0
cycle	P
ra_targ	19.723333
dec_targ	-1.001944
ra_nom	19.729622179319
dec_nom	-1.030316741192
roll_nom	285.95686434558
revision	2
ontime	39772.999923527
livetime	39253.33639907
ontime3	39766.717953086
ontime5	39772.999923527
ontime6	39772.999923527
ontime7	39772.999923527
ontime8	39757.294912636
l2events	339492



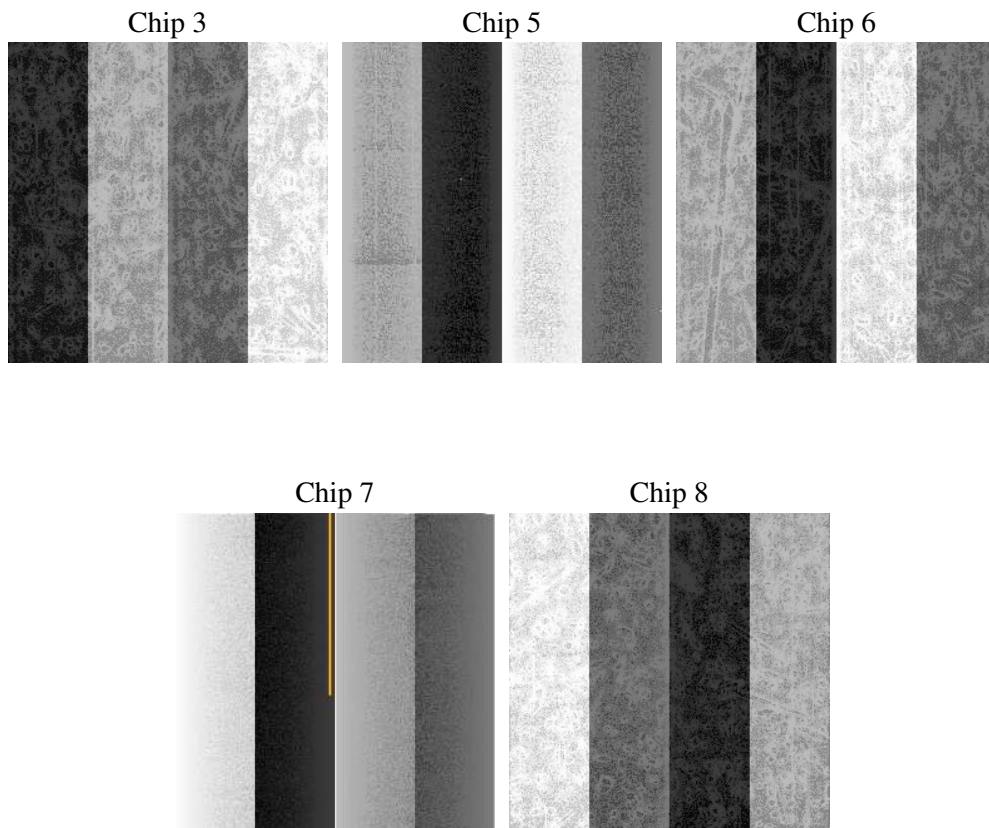
2 OBI

2.1 OBI

2.1.1 Images



2.1.2 Bias



2.1.3 Parameters

obi_num	1
ascdsver	7.6.7
caldbver	3.2.1
date	2006-02-23T14:31:01
revision	2

sched_exp_time	40000.000000
ontime	39777.654679626
ontime3	39771.372729093
ontime5	39777.654699534
ontime6	39777.654699534
ontime7	39777.654679626
ontime8	39761.949599117
l1events	1417888

2.1.4 Events

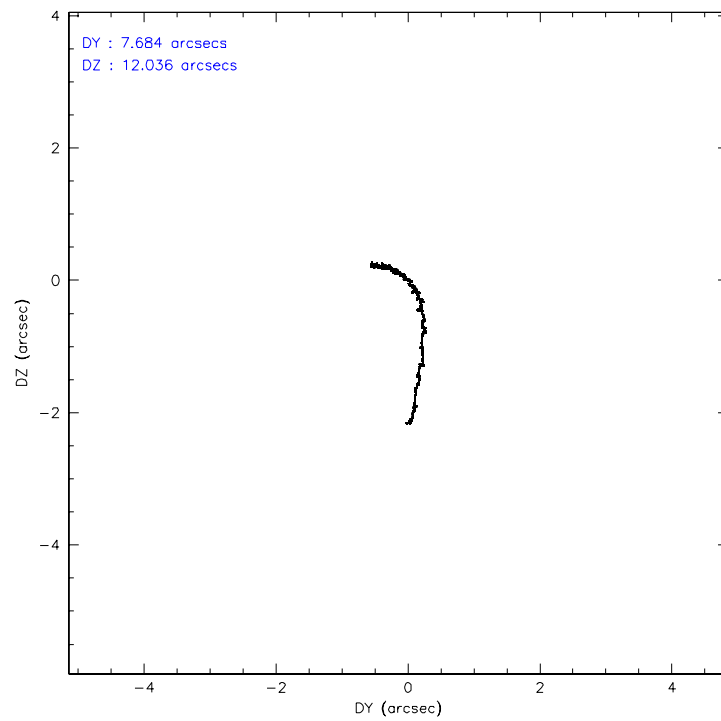
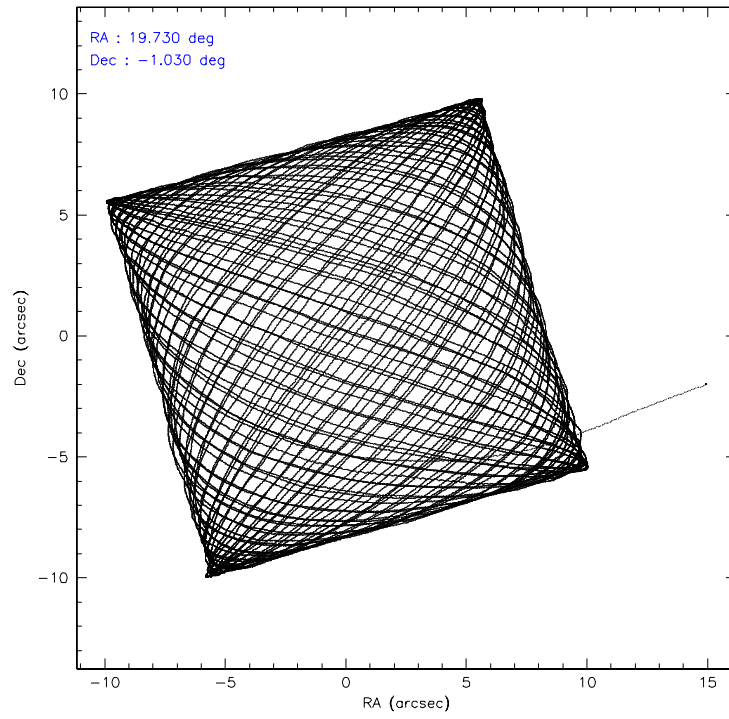
	ccd 3	ccd 5	ccd 6	ccd 7	ccd 8
level 1 events	230934	346011	248378	281266	311299
rejected events	208322	174117	221661	156808	237804
rejected %	90%	50%	89%	55%	76%

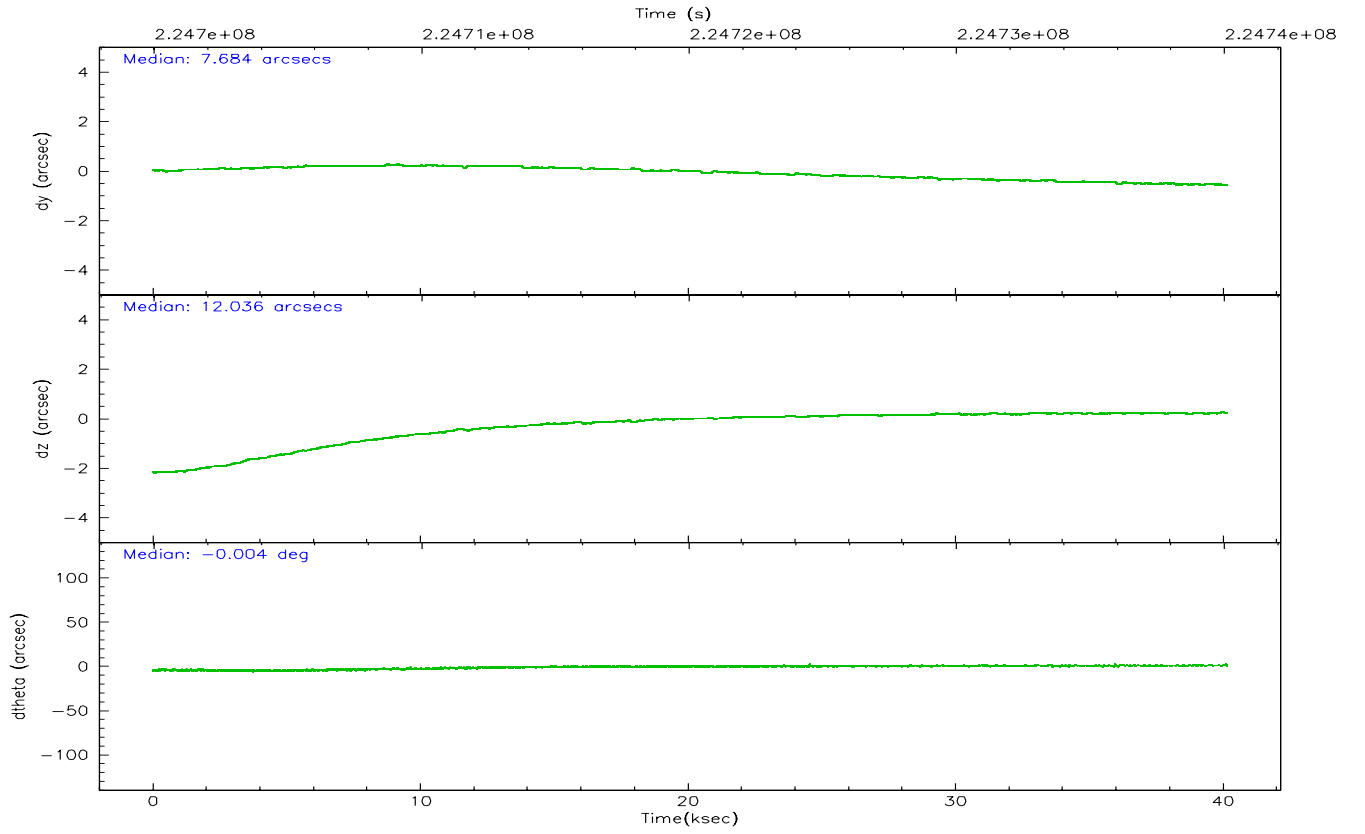
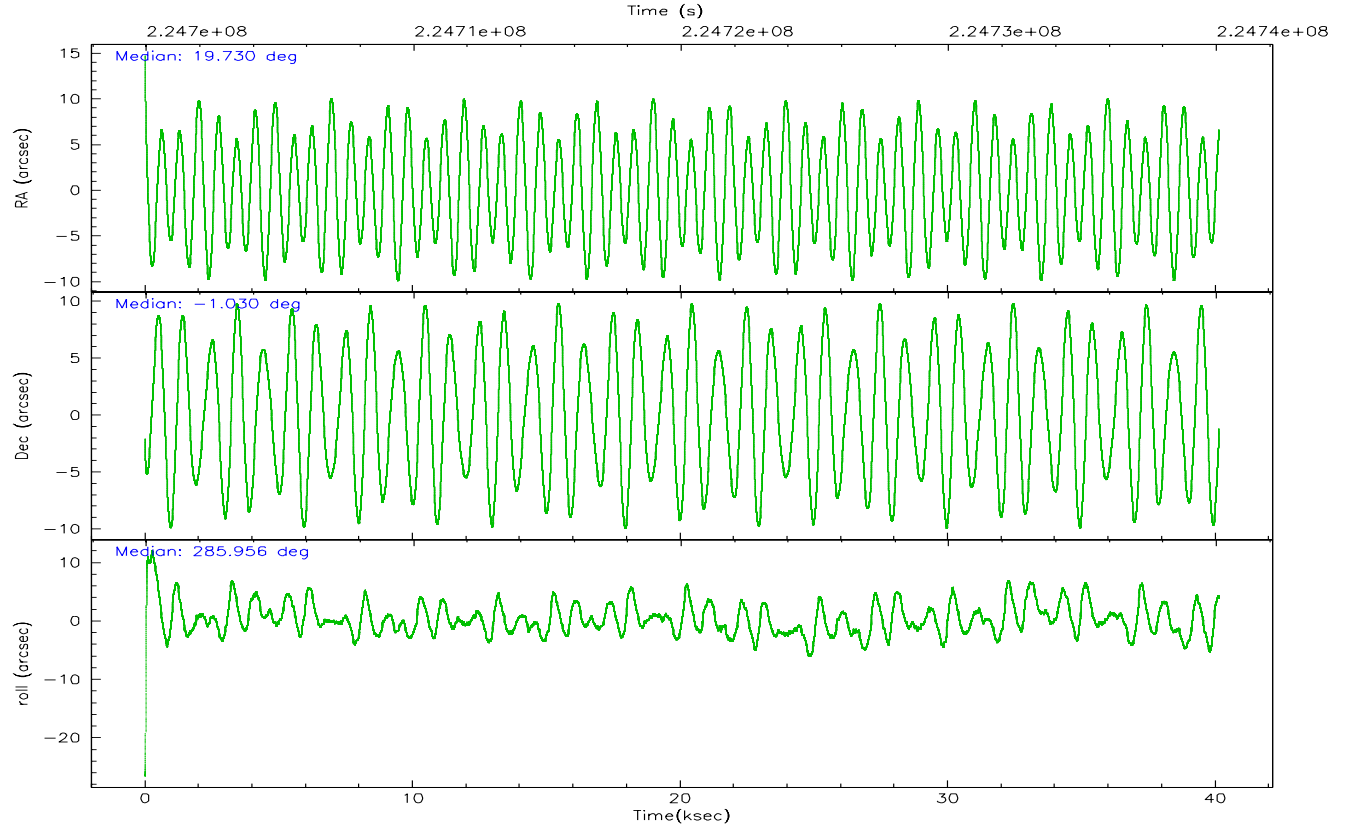
	ccd 3	ccd 5	ccd 6	ccd 7	ccd 8
grade 0 events	8085	23532	10035	10153	22288
	3%	6%	4%	3%	7%
grade 1 events	124	356	119	147	240
	0%	0%	0%	0%	0%
grade 2 events	4729	51267	5686	31321	15979
	2%	14%	2%	11%	5%
grade 3 events	2686	4039	2991	7711	8129
	1%	1%	1%	2%	2%
grade 4 events	2582	3902	2852	7378	7439
	1%	1%	1%	2%	2%
grade 5 events	9281	17674	9813	20550	13920
	4%	5%	3%	7%	4%
grade 6 events	4534	89187	5155	67918	19660
	1%	25%	2%	24%	6%
grade 7 events	198913	156054	211727	136088	223644
	86%	45%	85%	48%	71%

2.2 Compared Parameters

Parameter	Planned	Actual	Parameter	Planned	Actual
Instrument	ACIS	ACIS	Obspar format version number	6	6
Detector	ACIS-35678	ACIS-35678	Obspar file type	PREDICTED	ACTUAL
Grating	NONE	NONE	Obspar update status	NONE	UPDATED
Data mode	VFAINT	VFAINT	On-chip summing requested	N	N
Observation mode	POINTING	POINTING	Subarray requested	NONE	NONE
Pointing RA	19.709799	19.7296221793187	Alternating exposures requested	N	N
Pointing Dec	-1.011663	-1.030316741192048	Primary exposure time	0.000000	3.1
Pointing Roll	285.799905	285.9568643455751			
SIM focus pos (mm)	-0.684267	-0.6828225247311905			
SIM defocus (mm)	0	0.001444936568705701			
SIM translation stage pos (mm)	-190.132523	-190.1425803651734			
SIM translation stage offset (mm)	0	0.01005778216563158			
Observation start time	224700110.184000	224698964.55741			
Observation start date	2005-02-13T16:40:46	2005-02-13T16:22:44			
Observation end time	224740110.184000	224741966.38435			
Observation end date	2005-02-14T03:47:26	2005-02-14T04:19:26			
Read mode	TIMED	TIMED			

2.3 Aspect



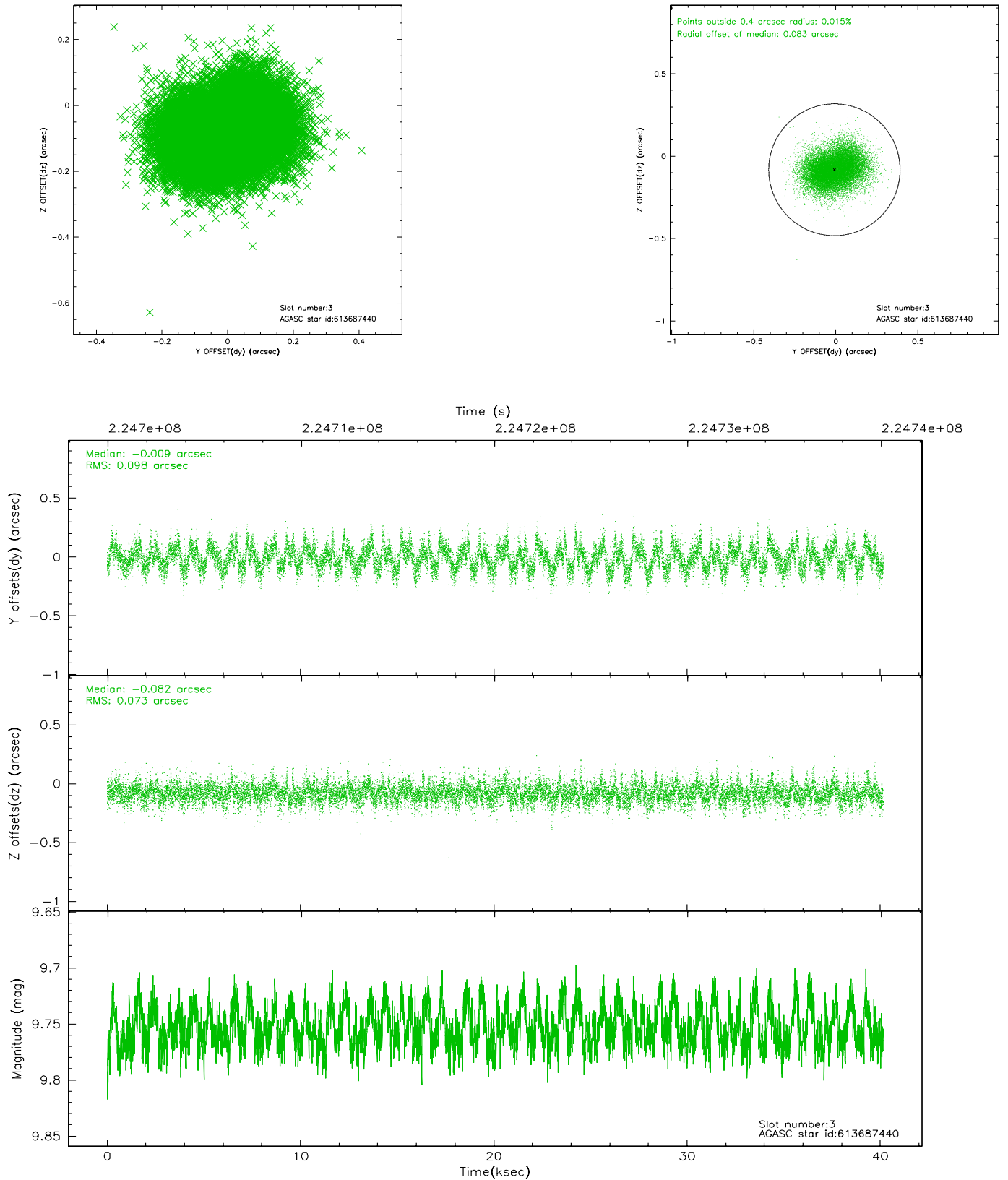


Slot Statistics

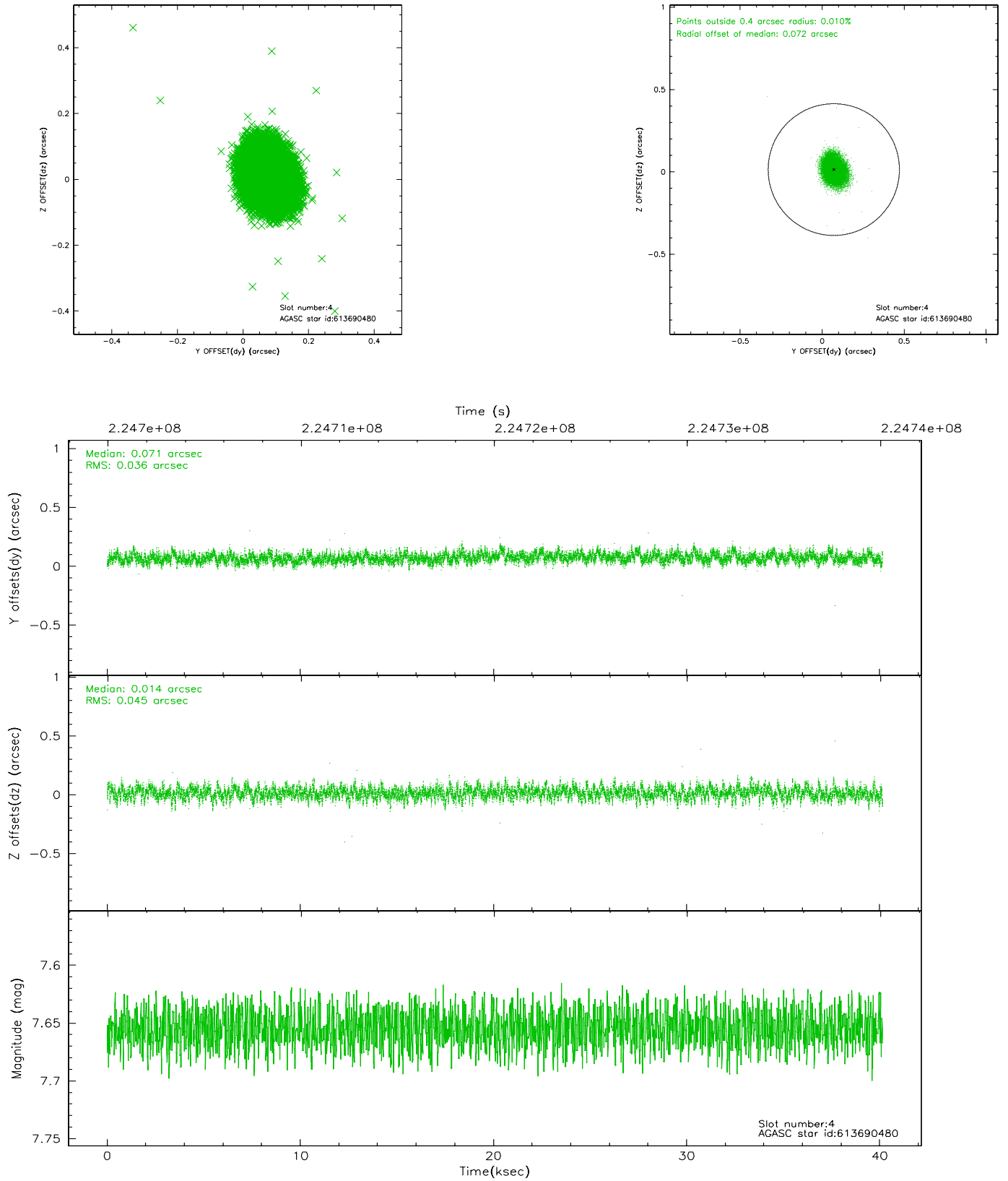
slot	status	id	mag	n_pts	med_dy	med_dz	dr1	dr2	ra	dec	mean_y	mean_z
0	FID	ACIS-S-2	7.10	9794	-0.007	0.000	0.014	0.027	0.000000	0.000000	-760.38	-1732.95
1	FID	ACIS-S-4	7.20	9794	0.035	0.004	0.015	0.026	0.000000	0.000000	2152.93	175.54
2	FID	ACIS-S-5	7.23	9793	-0.058	0.005	0.014	0.021	0.000000	0.000000	-1813.25	169.20
3	GUIDE	613687440	9.75	19567	-0.009	-0.082	0.131	0.208	19.730049	-0.398183	-2105.13	671.58
4	GUIDE	613690480	7.65	19583	0.071	0.014	0.061	0.100	20.221201	-1.310586	1536.88	1478.47
5	GUIDE	613690664	9.10	19581	0.014	0.048	0.084	0.140	20.005872	-0.823410	-361.60	1210.38
6	GUIDE	613692216	9.73	19536	-0.049	0.107	0.112	0.184	19.881949	-0.589032	-1295.20	1010.89
7	GUIDE	613689696	10.51	19552	-0.032	-0.086	0.213	0.318	19.232058	-0.909892	-820.55	-1554.98

2.4 Star Slots

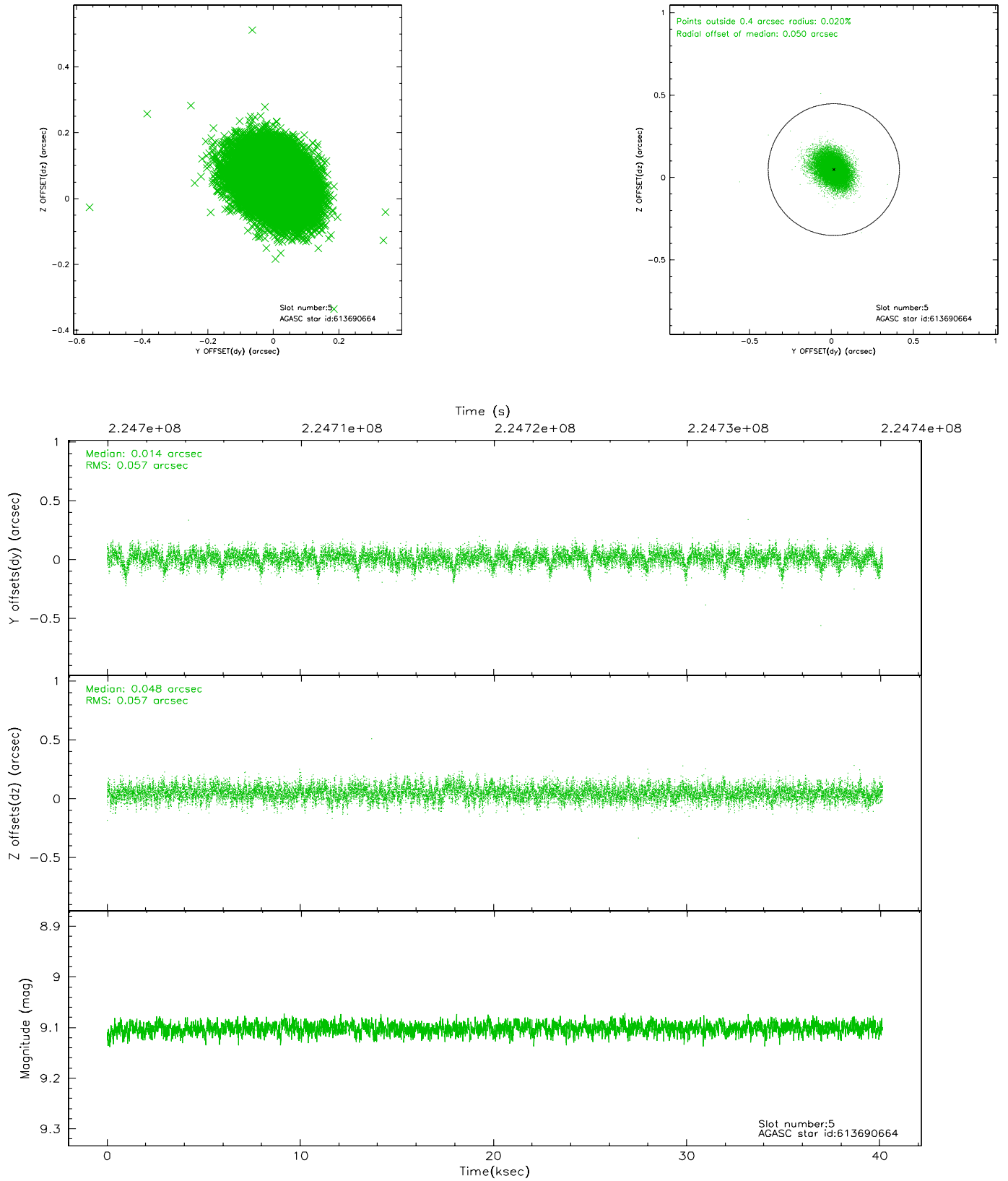
2.4.1 Slot 3



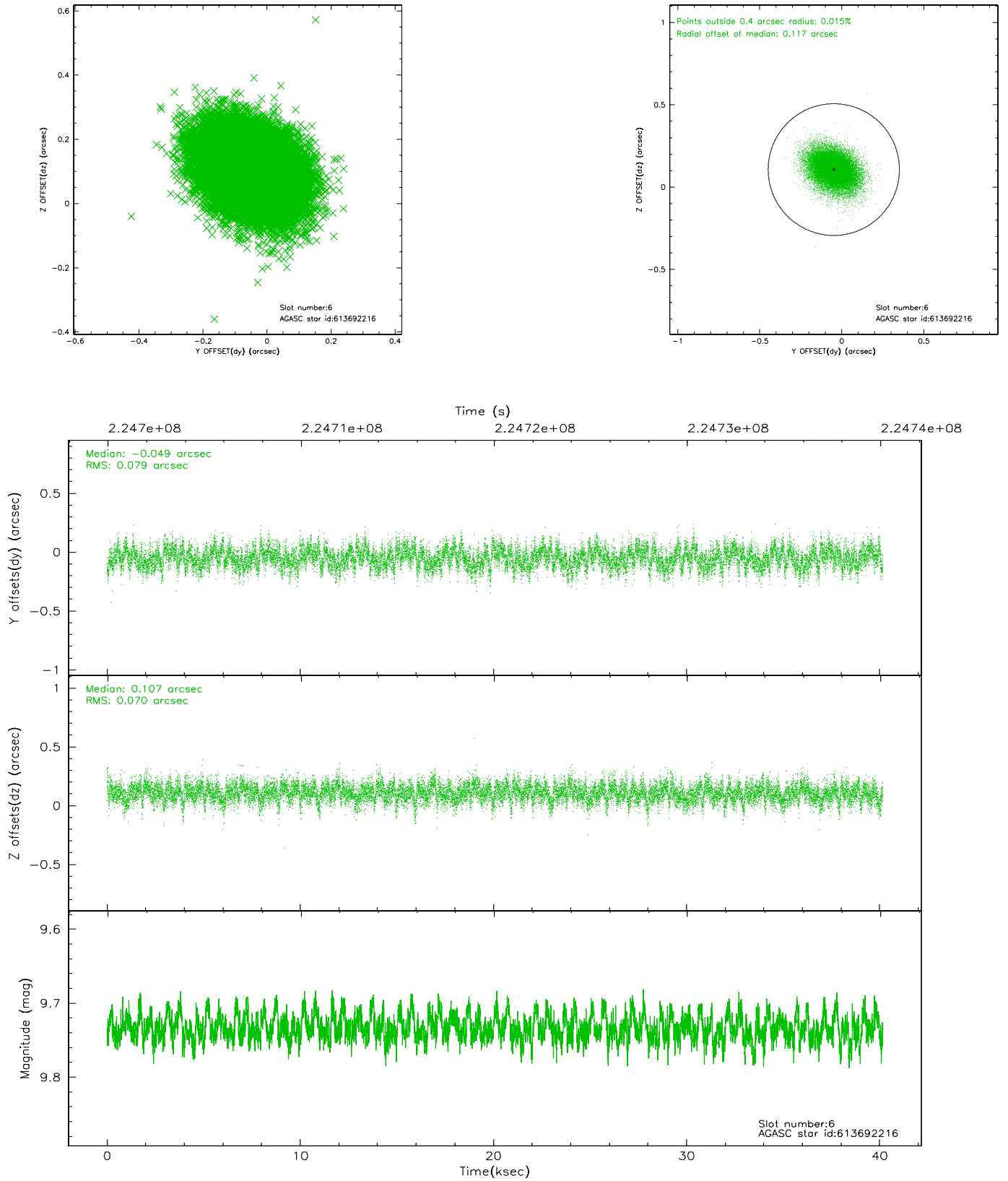
2.4.2 Slot 4



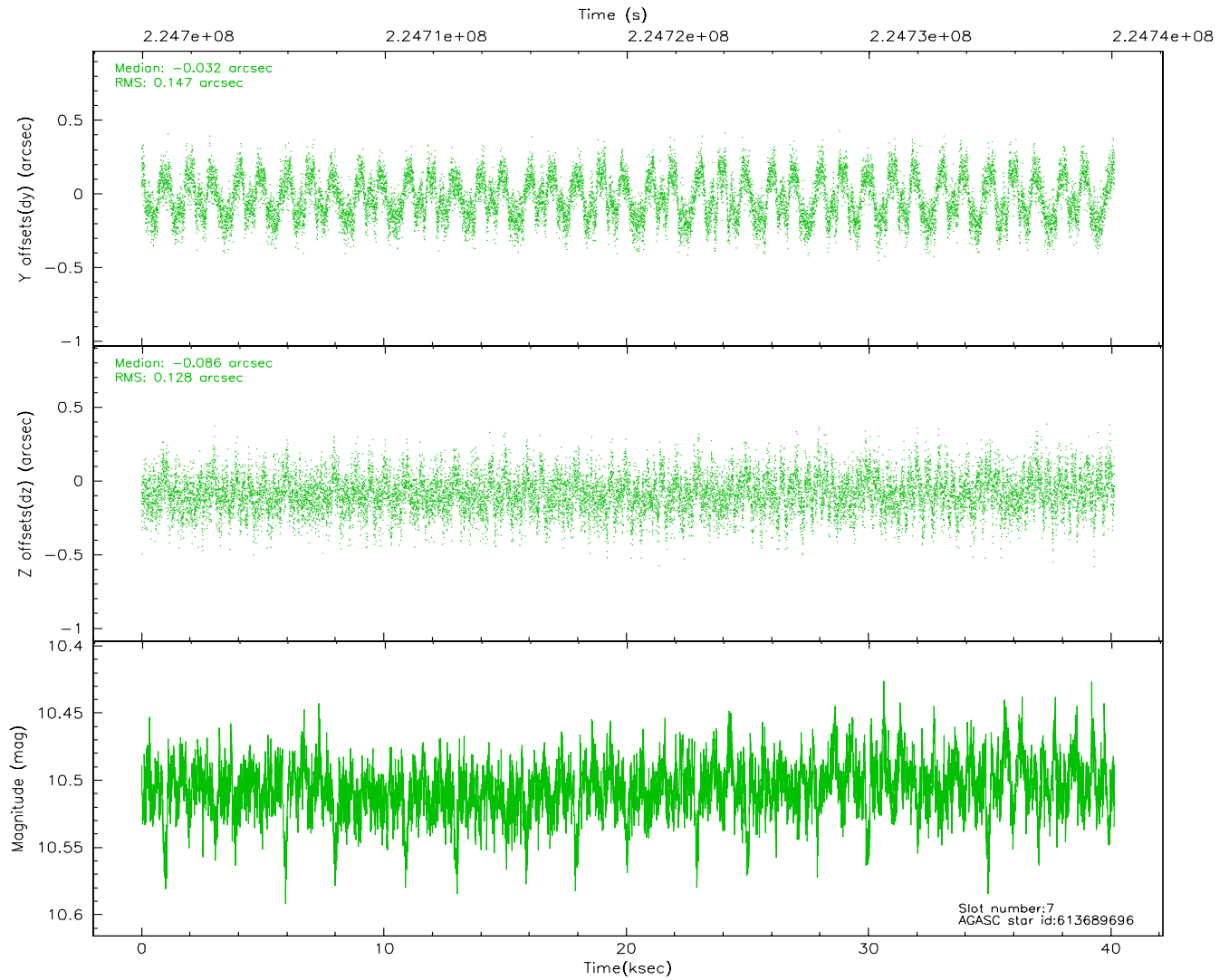
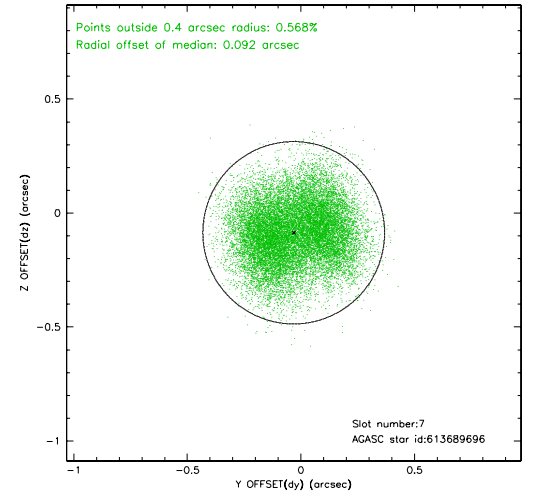
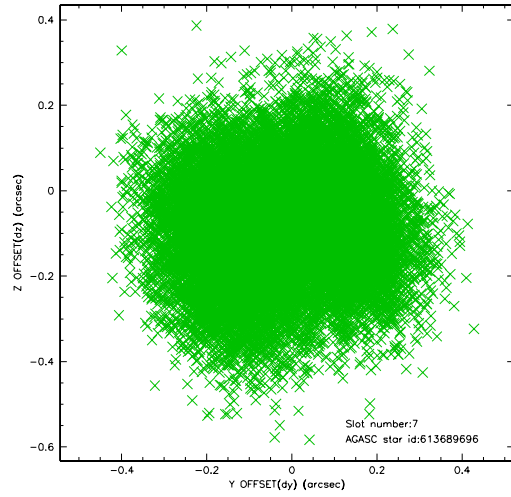
2.4.3 Slot 5



2.4.4 Slot 6

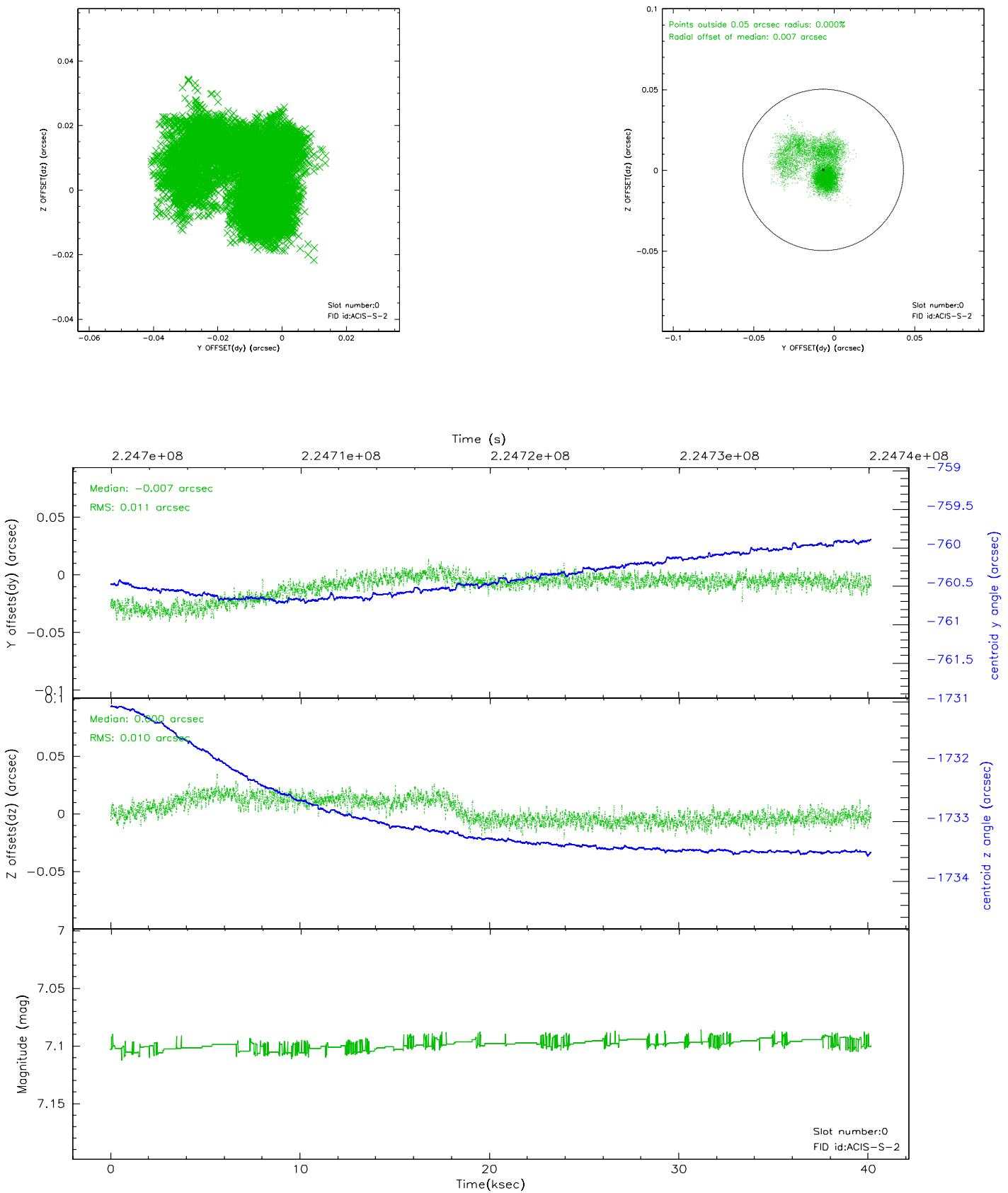


2.4.5 Slot 7

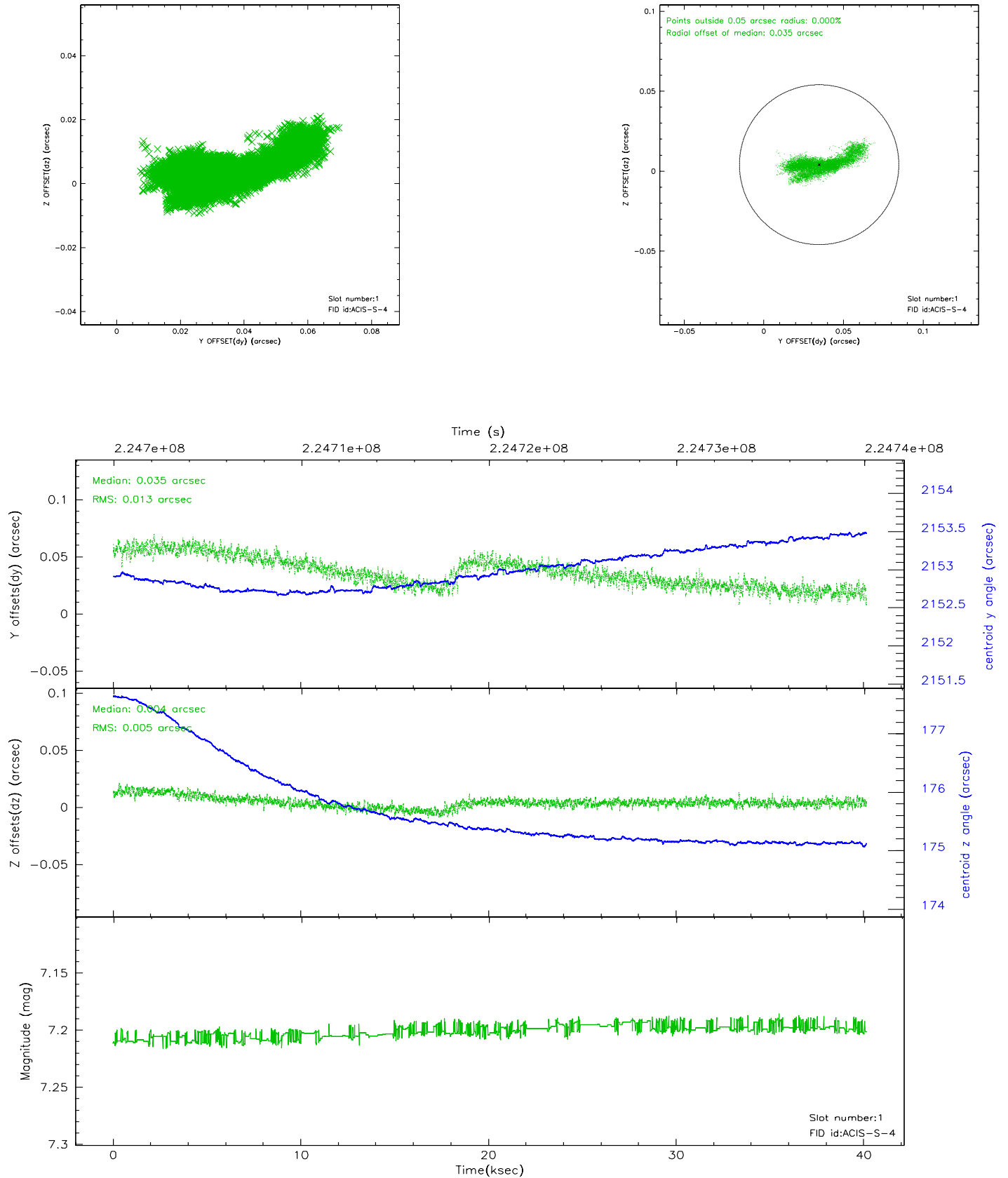


2.5 FID Slots

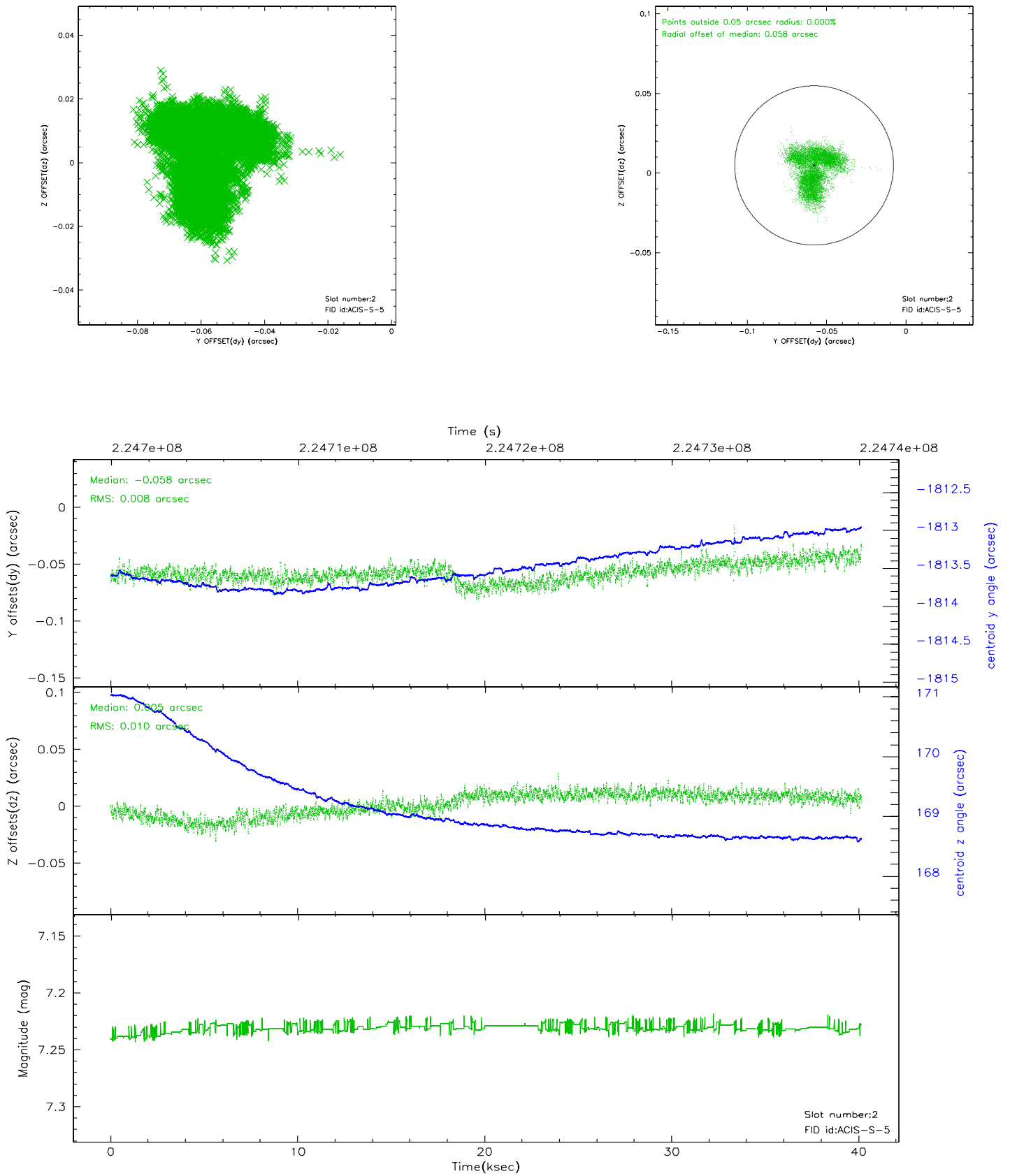
2.5.1 Slot 0



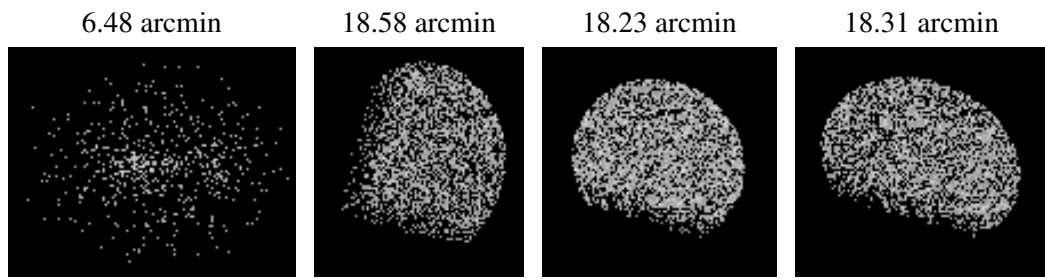
2.5.2 Slot 1



2.5.3 Slot 2



3 Point Sources



A Summary

A.1 Status

V&V Scientist	Jen Lauer
V&V Date (YYYY-MM-DD)	2006.02.23
V&V Edition	1
V&V Disposition and Status	OK
V&V Charge Time	39.77299

A.2 Comments