

V&V Reference Report

L2 ASCDS Version : 7.6.7

Observation 4961 - L2 Version 004
Chandra X-Ray Center

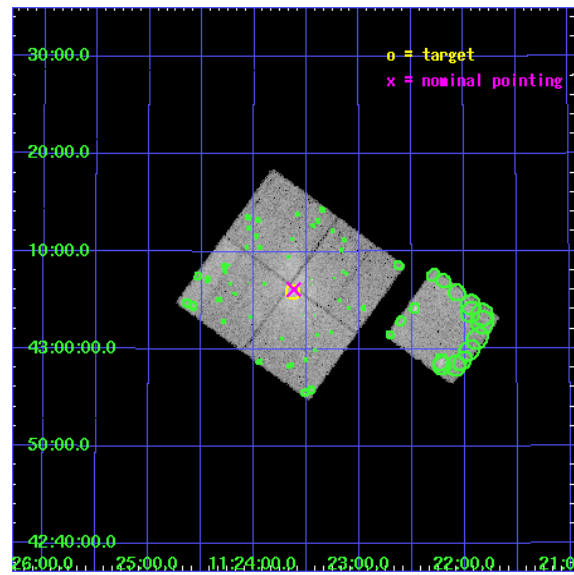
L2 Processing Date : Mar 11 2006

Contents

1	Front	2
2	OBI	3
2.1	OBI	3
2.1.1	Images	3
2.1.2	Bias	3
2.1.3	Parameters	4
2.1.4	Events	4
2.2	Compared Parameters	5
2.3	Aspect	6
2.4	Star Slots	9
2.4.1	Slot 4	9
2.4.2	Slot 5	10
2.4.3	Slot 6	11
2.4.4	Slot 7	12
2.5	FID Slots	13
2.5.1	Slot 0	13
2.5.2	Slot 1	14
2.5.3	Slot 2	15
3	Point Sources	16
A	Summary	17
A.1	Status	17
A.2	Comments	17

1 Front

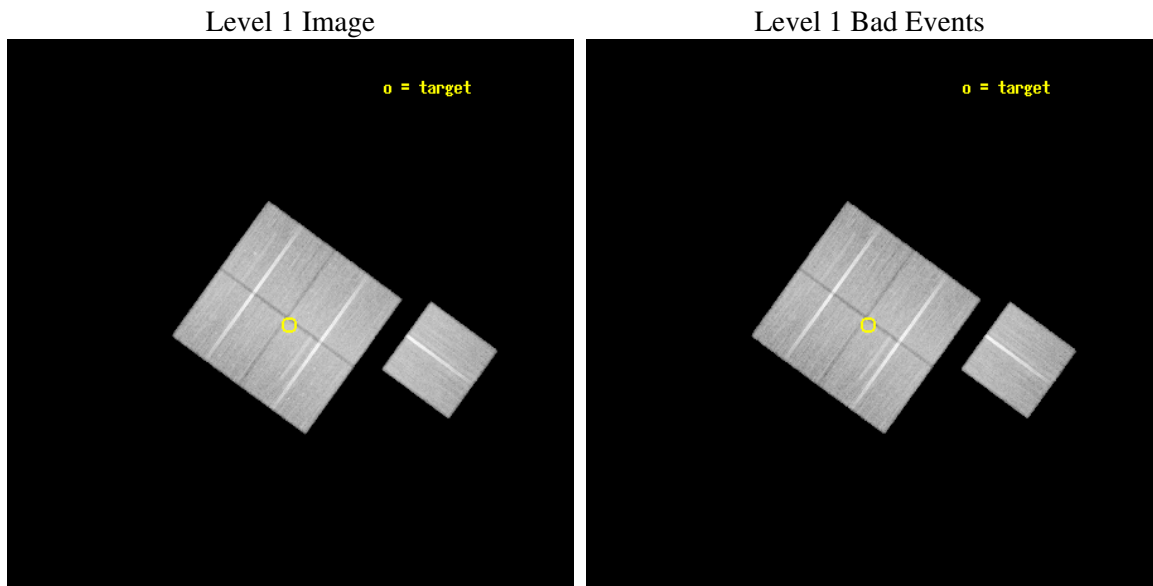
seq_num	800407
obs_id	4961
title	Radio Relics and Merger Shocks in Clusters of Galaxies
observer	Prof. Joshua Kempner
object	Abell 1240
dtcycle	0
cycle	P
ra_targ	170.906667
dec_targ	43.097778
ra_nom	170.90523574539
dec_nom	43.10229423173
roll_nom	126.02691173914
revision	4
ontime	52027.176929325
livetime	51347.403560893
ontime0	52036.599899948
ontime1	52027.176919281
ontime2	52027.176939189
ontime3	52027.176929325
ontime6	52027.176899314
l2events	146678



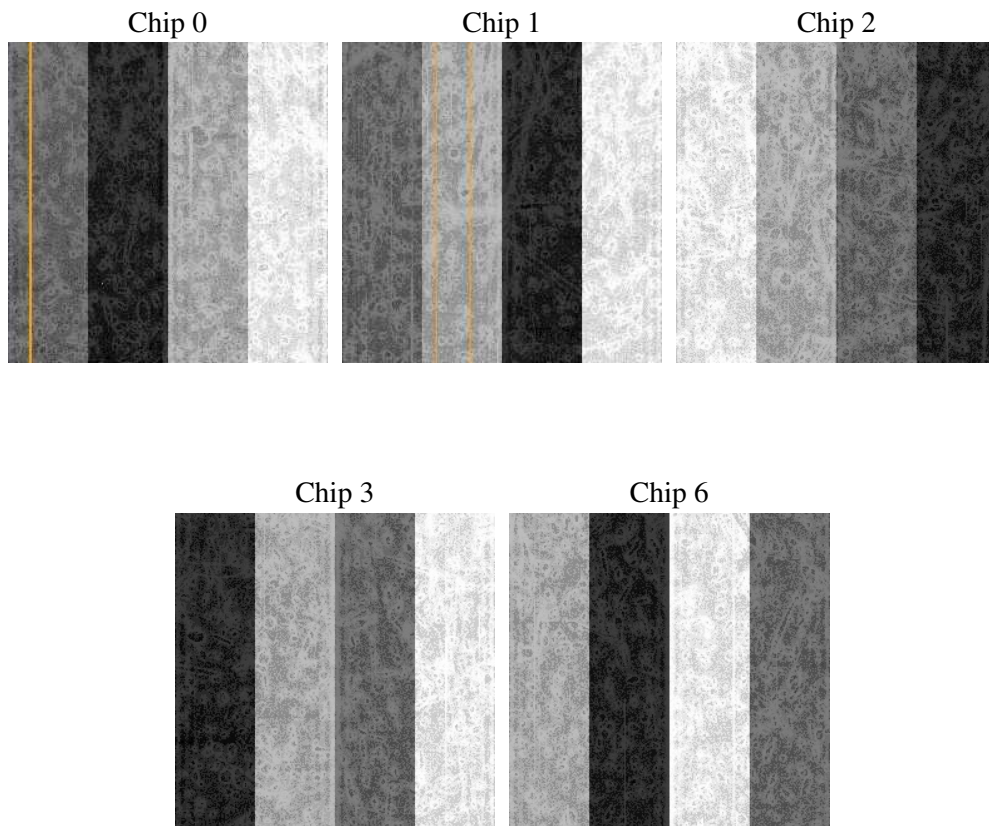
2 OBI

2.1 OBI

2.1.1 Images



2.1.2 Bias



2.1.3 Parameters

obi_num	0
ascdsver	7.6.7.1
caldbver	3.2.1
date	2006-03-10T22:42:54
revision	4

sched_exp_time	52000.000000
ontime	52030.891903132
ontime0	52043.455903858
ontime1	52030.891893089
ontime2	52030.891912997
ontime3	52030.891903132
ontime6	52034.032903224
l1events	1584075

2.1.4 Events

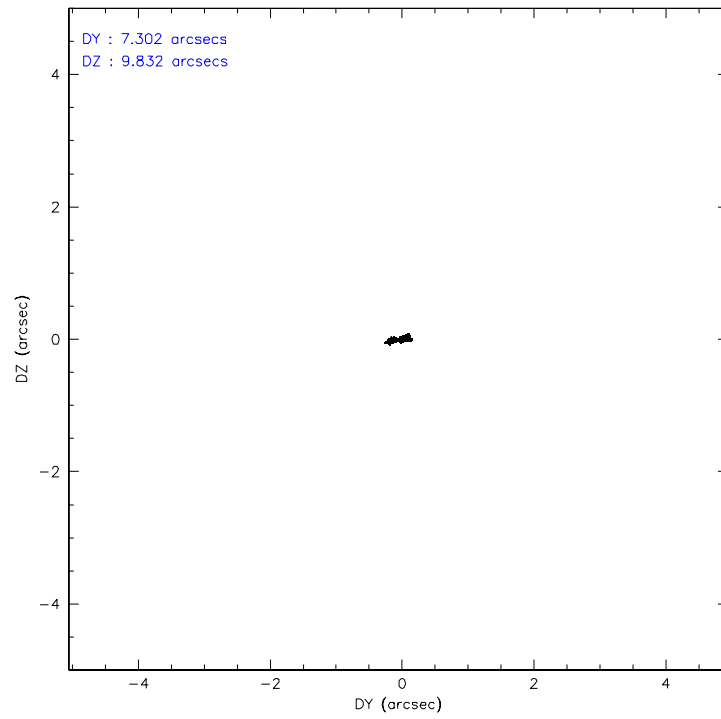
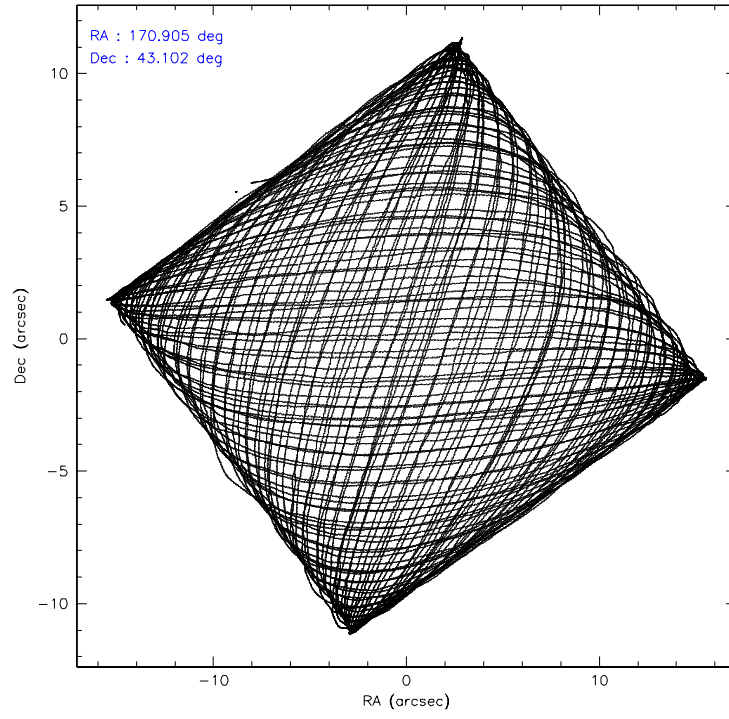
	ccd 0	ccd 1	ccd 2	ccd 3	ccd 6
level 1 events	299031	305440	330614	322603	326387
rejected events	264244	267704	296828	287910	293685
rejected %	88%	87%	89%	89%	89%

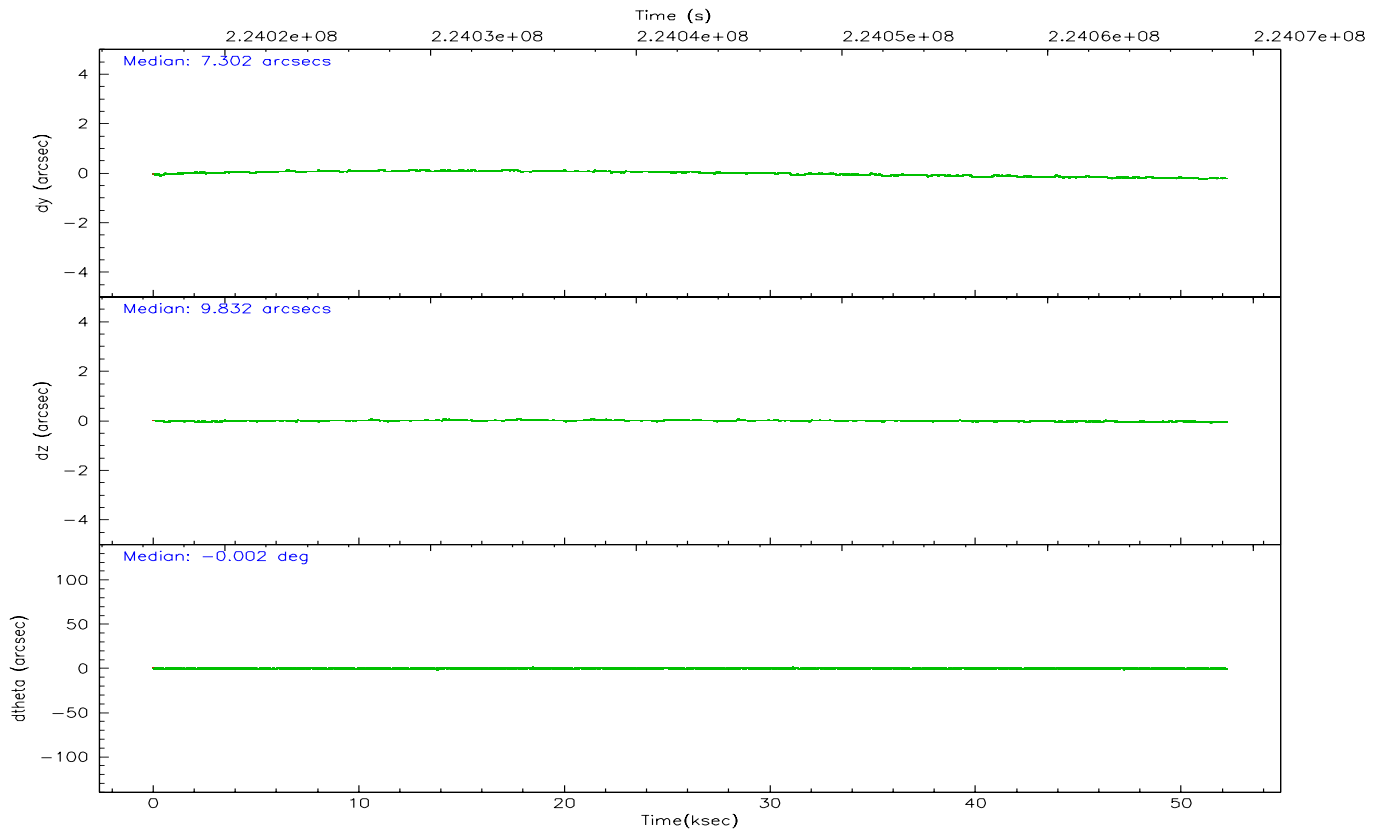
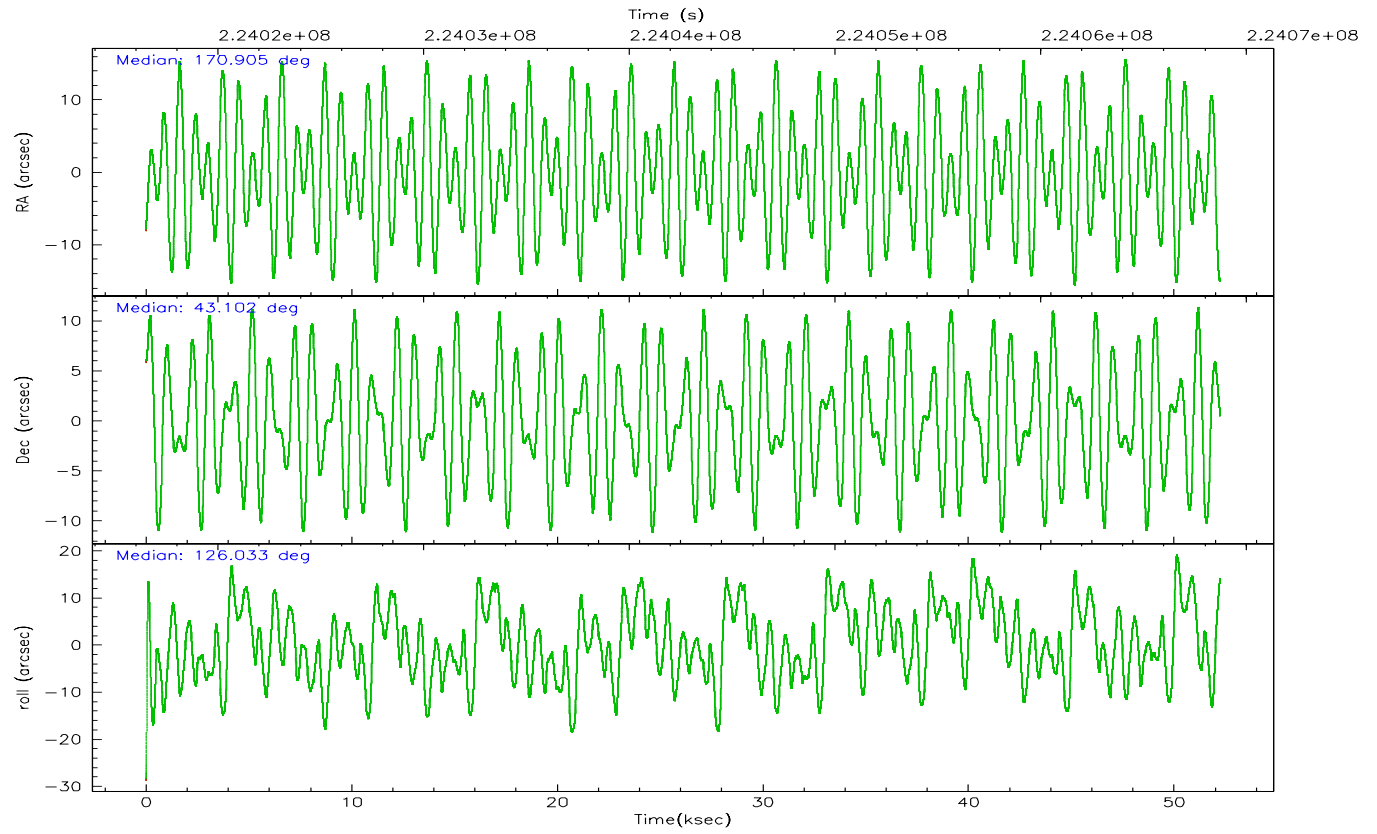
	ccd 0	ccd 1	ccd 2	ccd 3	ccd 6
grade 0 events	13469	14380	13654	14459	11450
	4%	4%	4%	4%	3%
grade 1 events	174	163	189	186	124
	0%	0%	0%	0%	0%
grade 2 events	7589	8207	7327	6927	7011
	2%	2%	2%	2%	2%
grade 3 events	3861	4005	3547	3664	3581
	1%	1%	1%	1%	1%
grade 4 events	3596	3958	3607	3608	3640
	1%	1%	1%	1%	1%
grade 5 events	11380	12117	10816	12658	12449
	3%	3%	3%	3%	3%
grade 6 events	6282	7191	5655	6043	7026
	2%	2%	1%	1%	2%
grade 7 events	252680	255419	285819	275058	281106
	84%	83%	86%	85%	86%

2.2 Compared Parameters

Parameter	Planned	Actual	Parameter	Planned	Actual
Instrument	ACIS	ACIS	Obspar format version number	6	6
Detector	ACIS-01236	ACIS-01236	Obspar file type	PREDICTED	ACTUAL
Grating	NONE	NONE	Obspar update status	NONE	UPDATED
Data mode	VFAINT	VFAINT	On-chip summing requested	N	N
Observation mode	POINTING	POINTING	Subarray requested	NONE	NONE
Pointing RA	170.939555	170.9052357453931	Alternating exposures requested	N	N
Pointing Dec	43.091266	43.10229423172968	Primary exposure time	0.000000	3.1
Pointing Roll	125.794790	126.0269117391359			
SIM focus pos (mm)	-0.782348	-0.7809083437167272			
SIM defocus (mm)	0	0.001439871863259334			
SIM translation stage pos (mm)	-233.592463	-233.5874344608287			
SIM translation stage offset (mm)	0	-0.005018542100998502			
Observation start time	224016736.184000	224015778.45151			
Observation start date	2005-02-05T18:51:12	2005-02-05T18:36:18			
Observation end time	224068736.184000	224069458.21643			
Observation end date	2005-02-06T09:17:52	2005-02-06T09:30:58			
Read mode	TIMED	TIMED			

2.3 Aspect



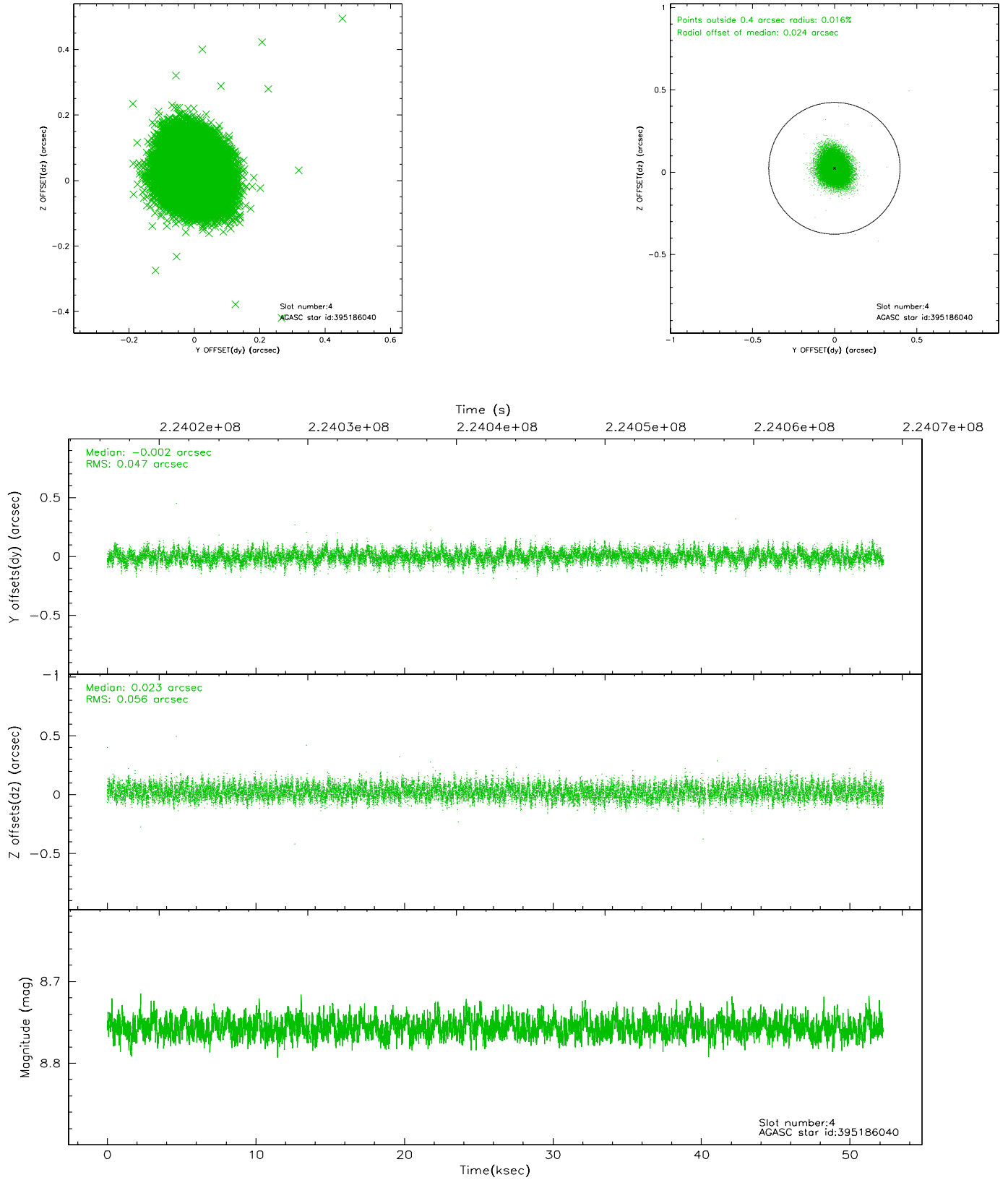


Slot Statistics

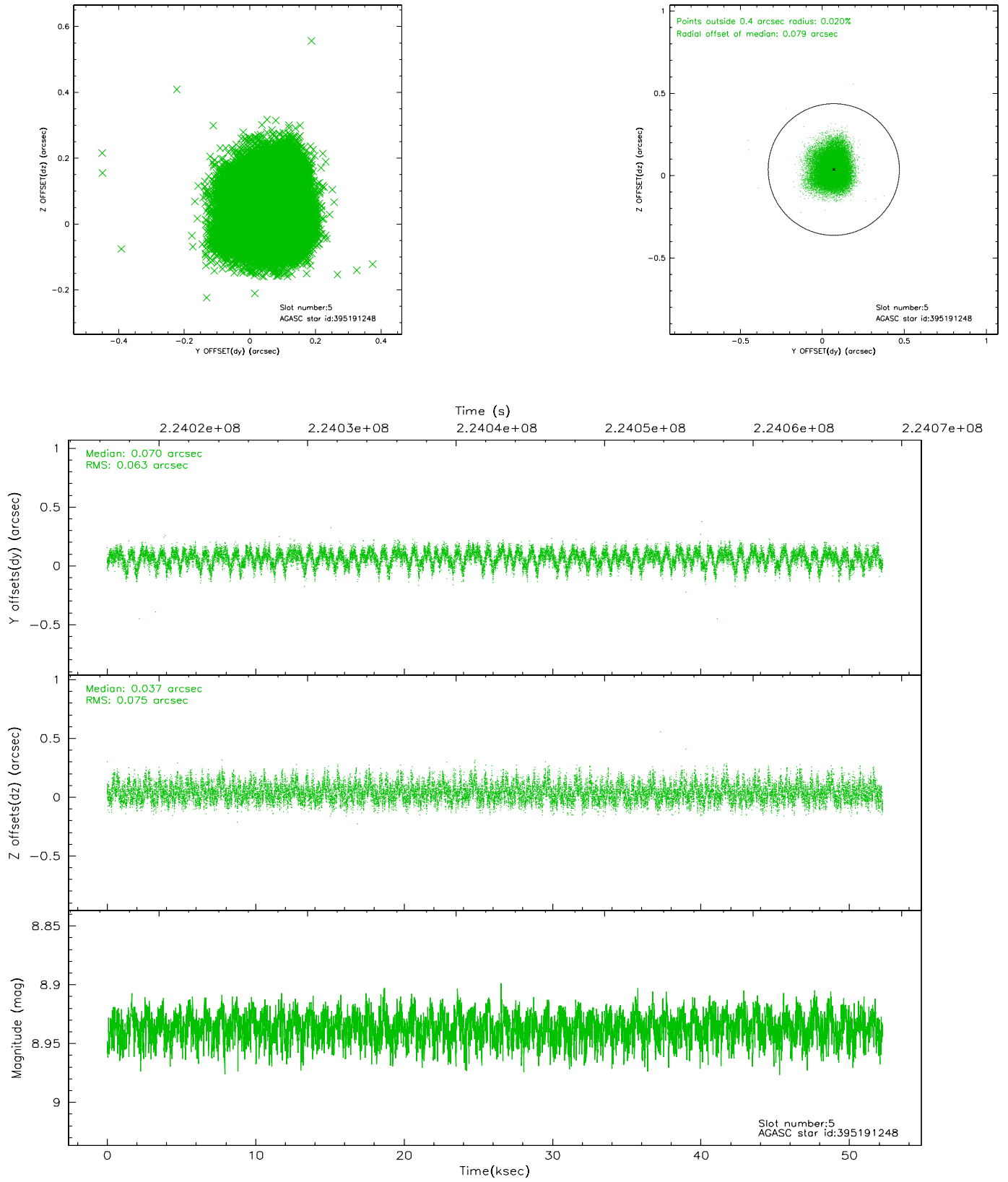
slot	status	id	mag	n_pts	med_dy	med_dz	dr1	dr2	ra	dec	mean_y	mean_z
0	FID	ACIS-I-1	7.25	12742	-0.020	0.053	0.007	0.012	0.000000	0.000000	932.37	-833.24
1	FID	ACIS-I-5	7.23	12743	-0.125	0.016	0.006	0.011	0.000000	0.000000	-1815.86	1064.21
2	FID	ACIS-I-6	7.25	12742	0.053	0.002	0.007	0.011	0.000000	0.000000	398.01	1708.68
3	OMITTED		0.00	0	0.000	0.000	0.000	0.000	0.000000	0.000000	0.00	0.00
4	GUIDE	395186040	8.76	25398	-0.002	0.023	0.078	0.124	171.276885	43.215973	-151.56	-981.24
5	GUIDE	395191248	8.94	25477	0.070	0.037	0.105	0.168	171.923511	43.094424	-1491.13	-2113.14
6	GUIDE	395193976	10.23	25397	-0.025	-0.061	0.185	0.297	171.424955	43.424374	233.53	-1732.66
7	GUIDE	395194640	7.83	25483	-0.047	0.001	0.070	0.111	171.538291	42.732504	-1968.62	-531.83

2.4 Star Slots

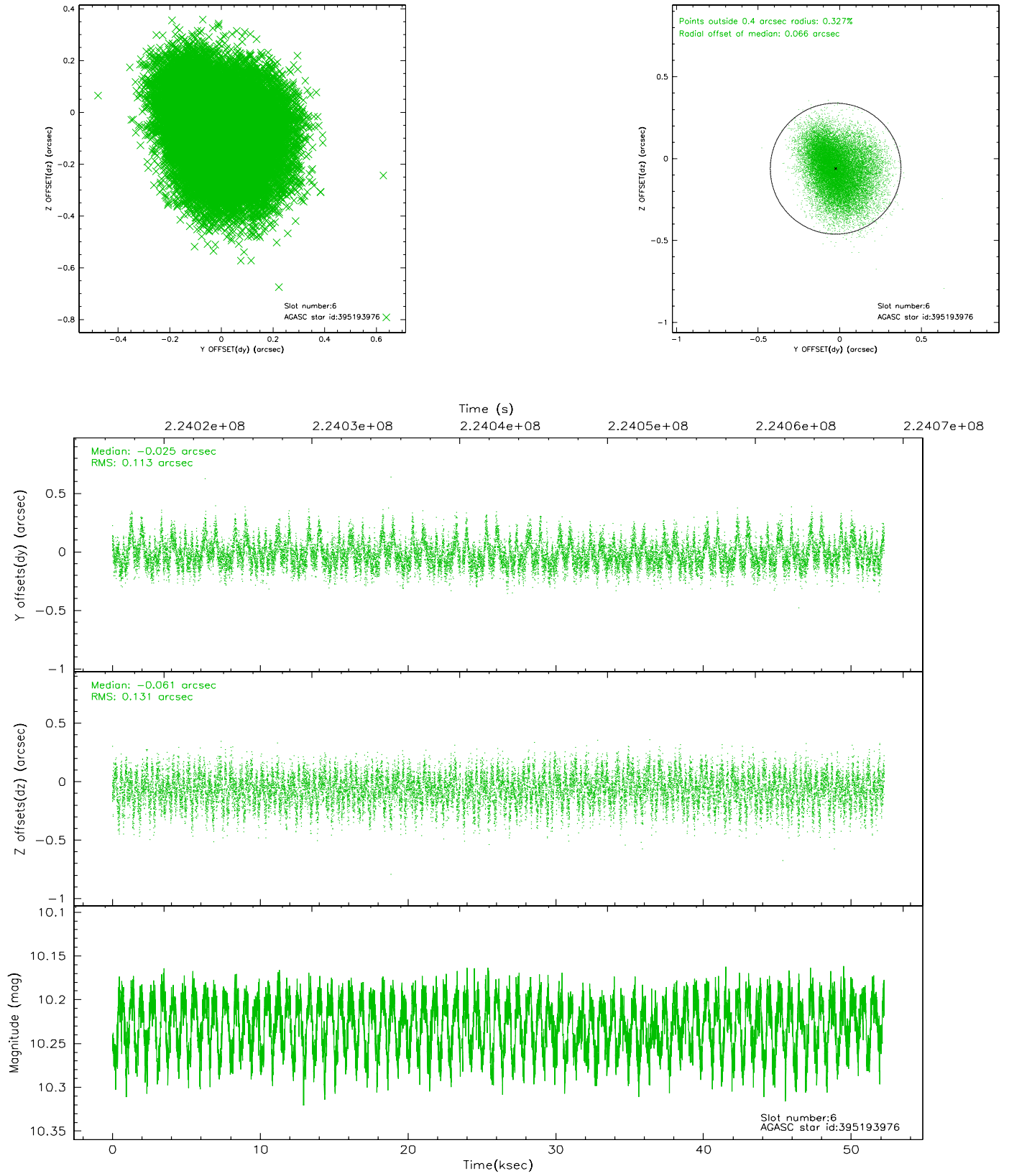
2.4.1 Slot 4



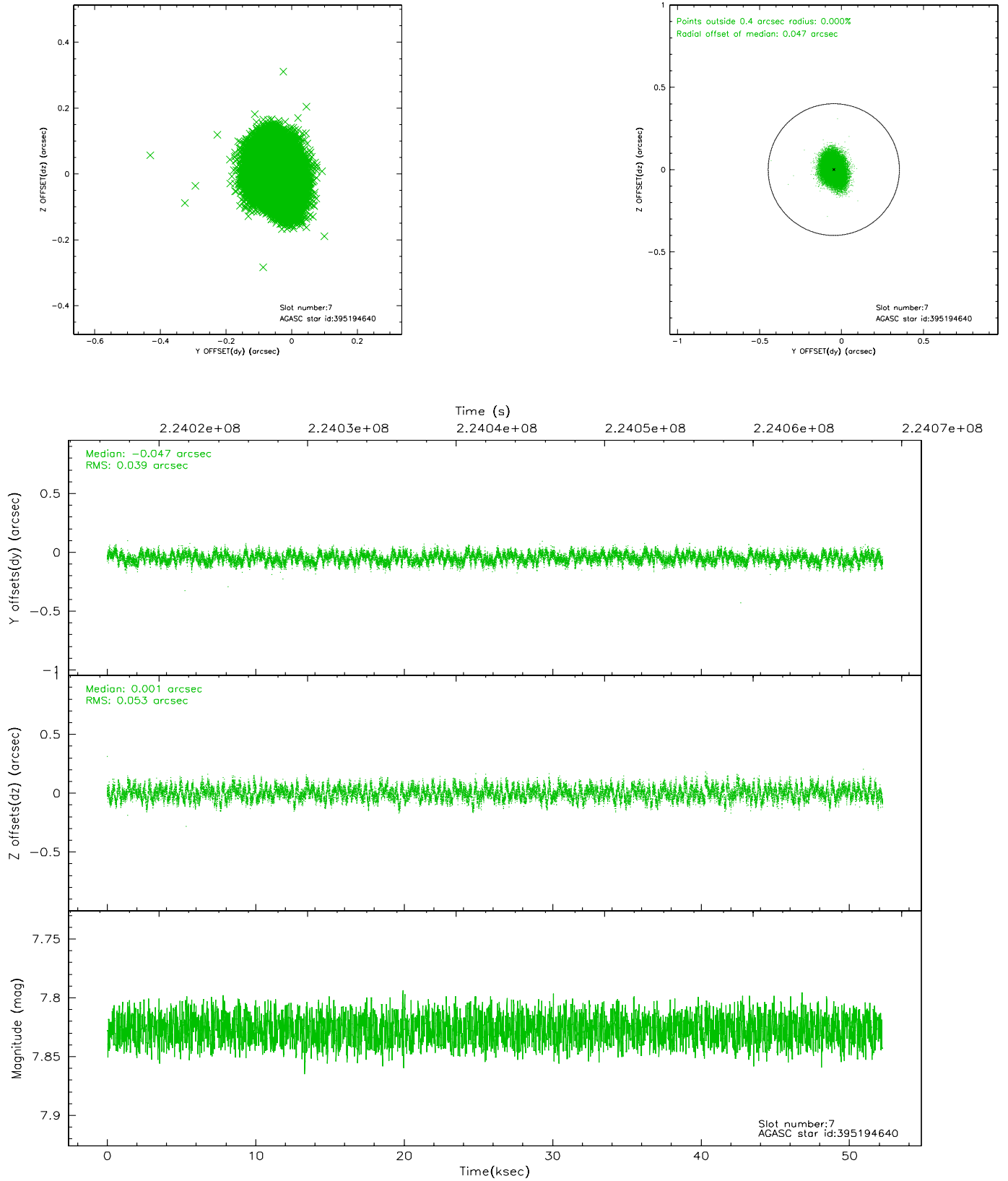
2.4.2 Slot 5



2.4.3 Slot 6

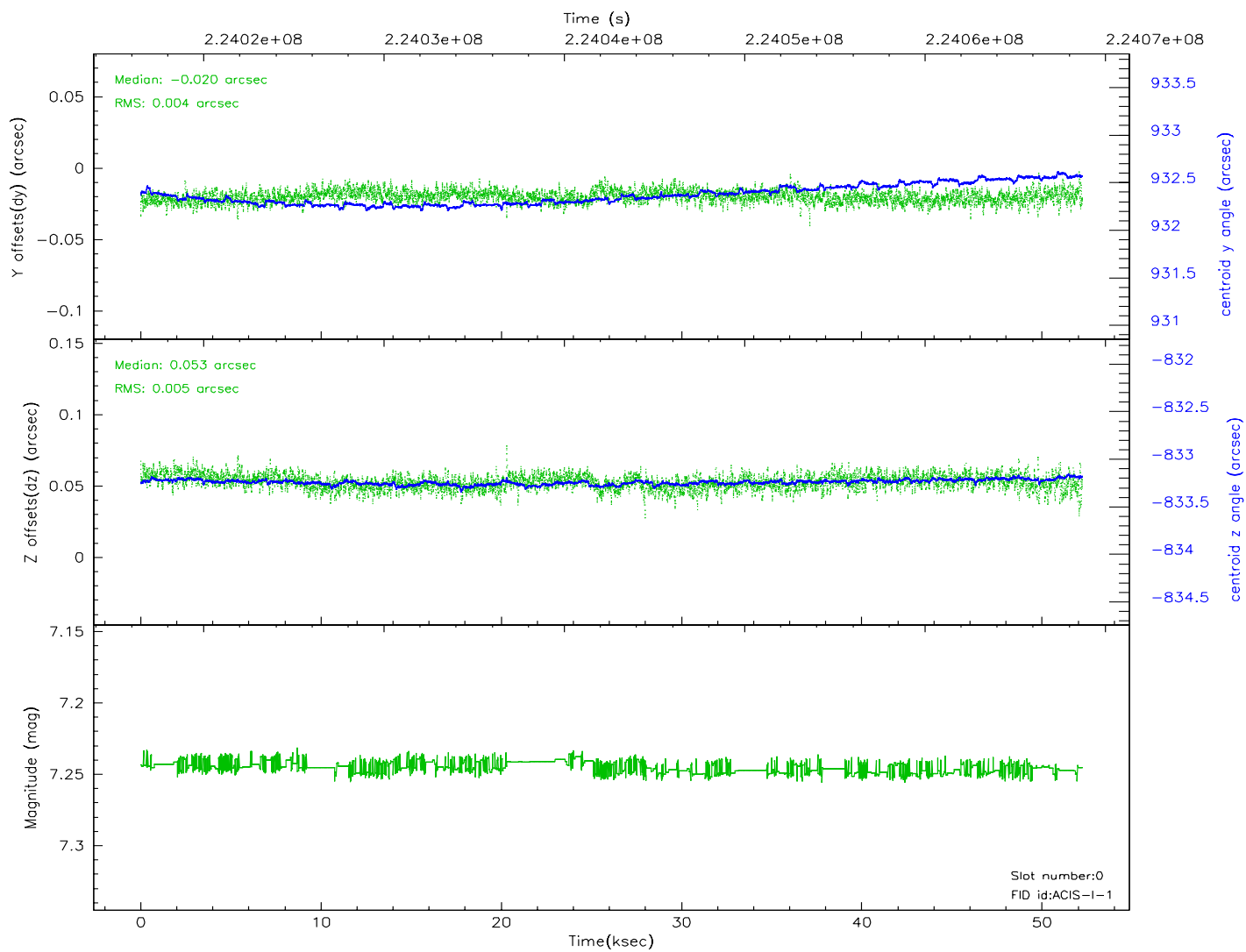
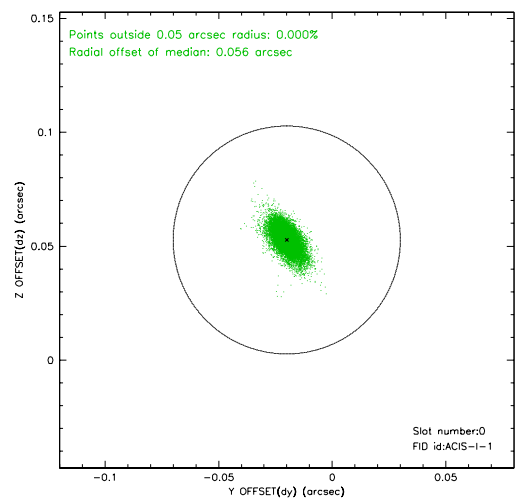
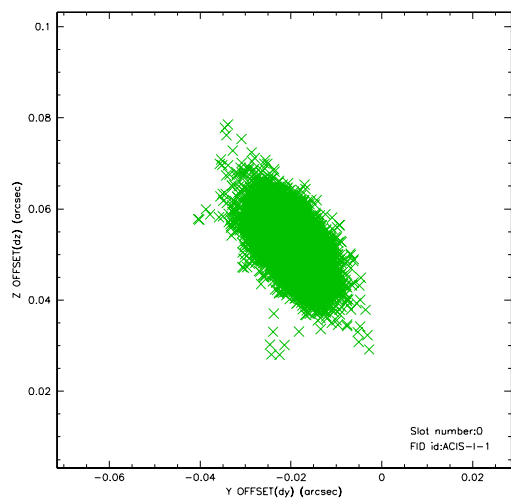


2.4.4 Slot 7

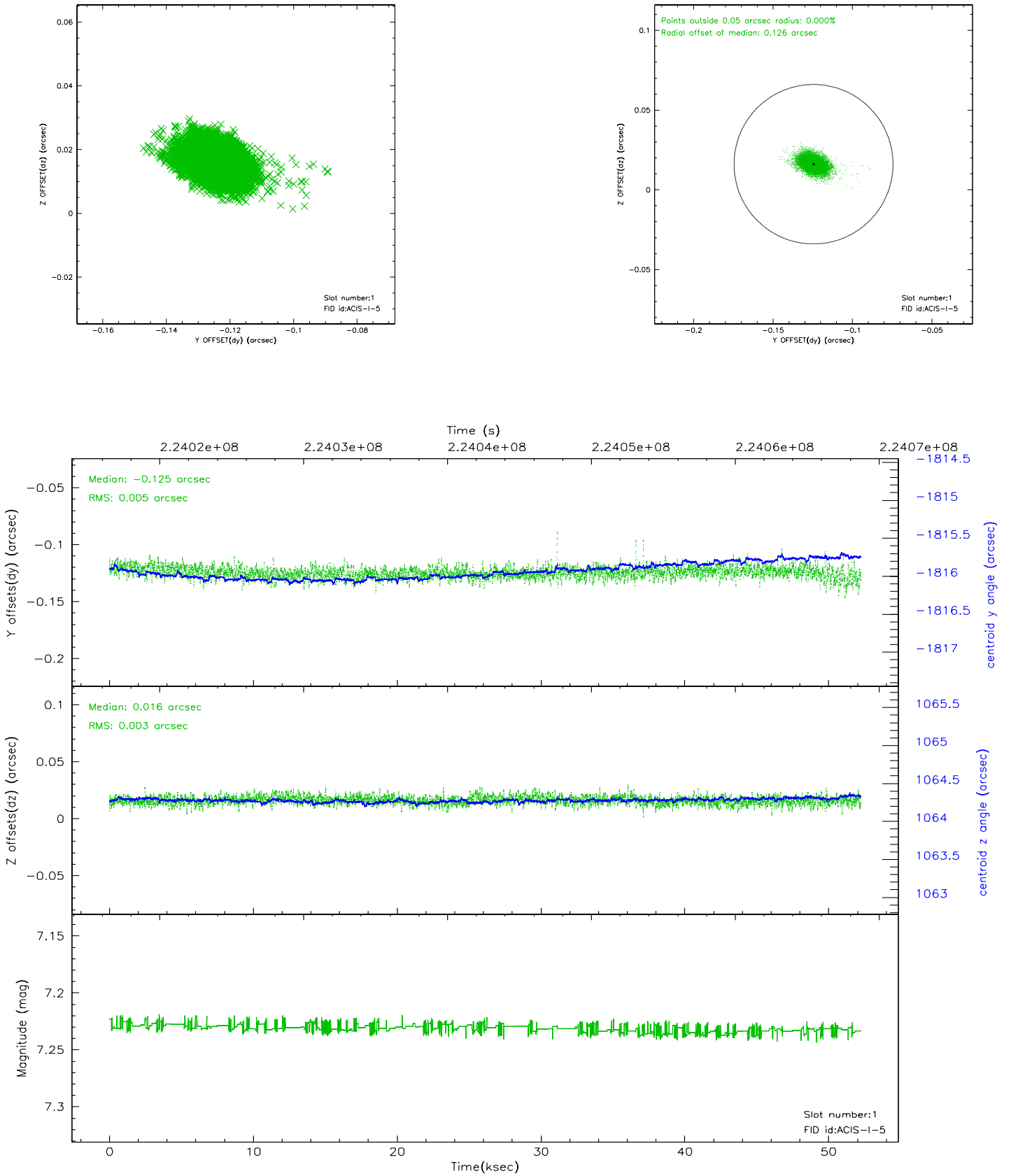


2.5 FID Slots

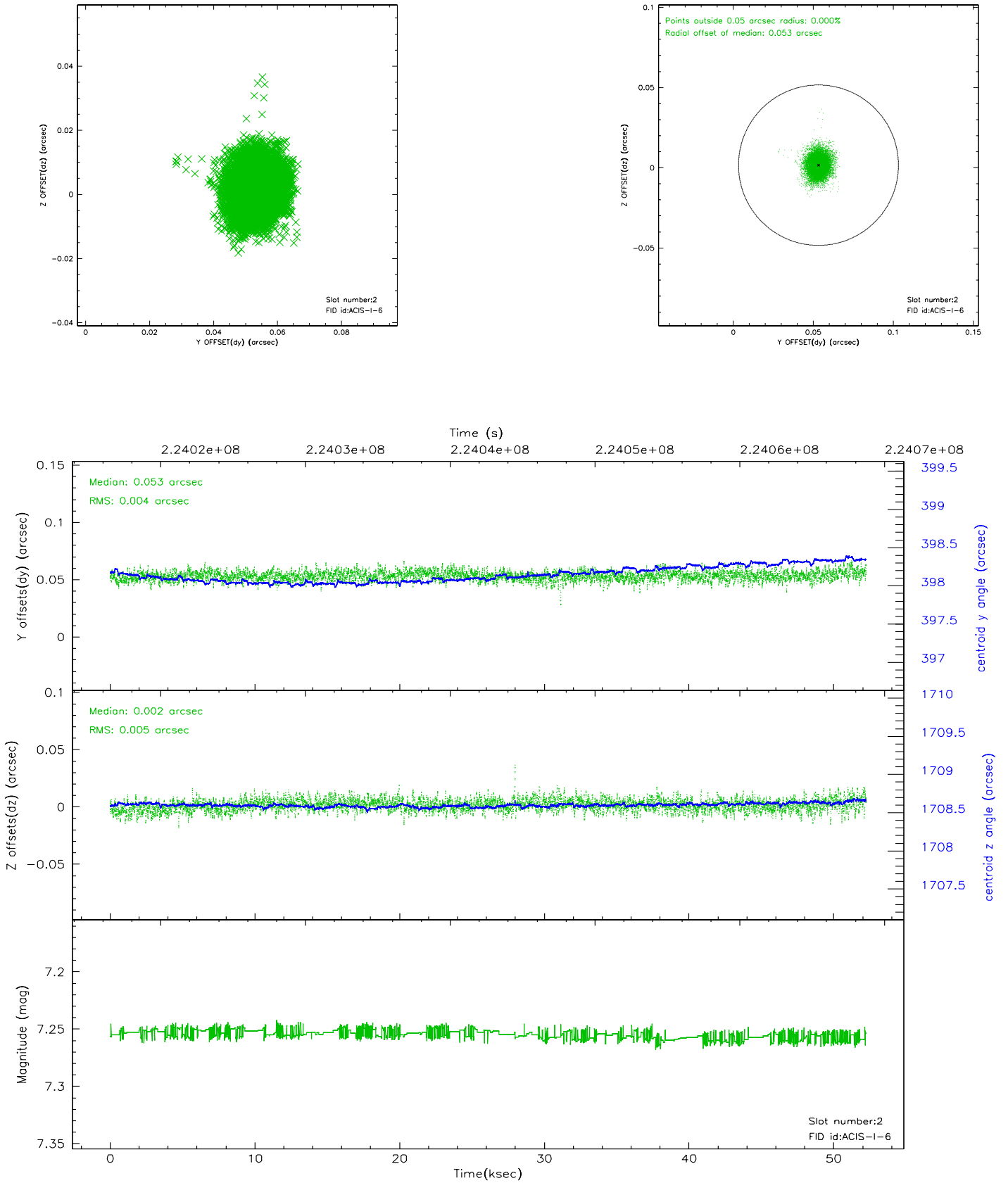
2.5.1 Slot 0



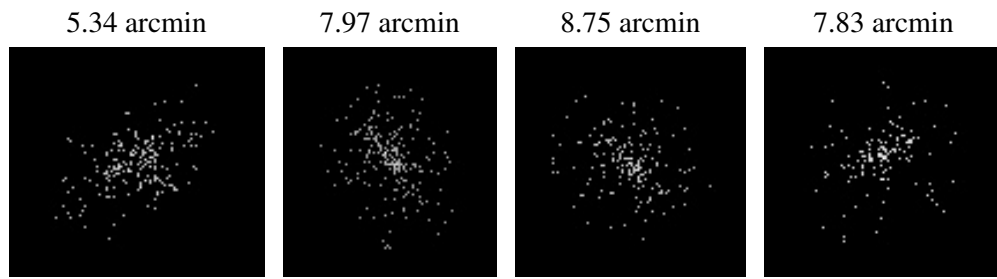
2.5.2 Slot 1



2.5.3 Slot 2



3 Point Sources



A Summary

A.1 Status

V&V Scientist	Jen Lauer
V&V Date (YYYY-MM-DD)	2006.03.13
V&V Edition	1
V&V Disposition and Status	OK
V&V Charge Time	52.02717

A.2 Comments