

V&V Reference Report

L2 ASCDS Version : 8.4.5

Observation 4957 - L2 Version 3
Chandra X-Ray Center

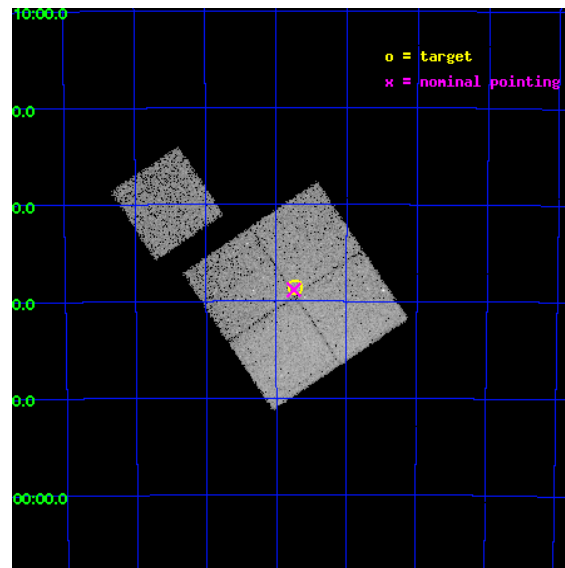
L2 Processing Date : Dec 2 2012

Contents

1	Front	2
2	OBI	3
2.1	OBI	3
2.1.1	Images	3
2.1.2	Bias	3
2.1.3	Parameters	4
2.1.4	Events	4
2.2	Compared Parameters	5
2.3	Aspect	6
2.4	Star Slots	9
2.4.1	Slot 3	9
2.4.2	Slot 4	10
2.4.3	Slot 5	11
2.4.4	Slot 6	12
2.4.5	Slot 7	13
2.5	FID Slots	14
2.5.1	Slot 0	14
2.5.2	Slot 1	15
2.5.3	Slot 2	16
A	Summary	17
A.1	Status	17
A.2	Comments	17

1 Front

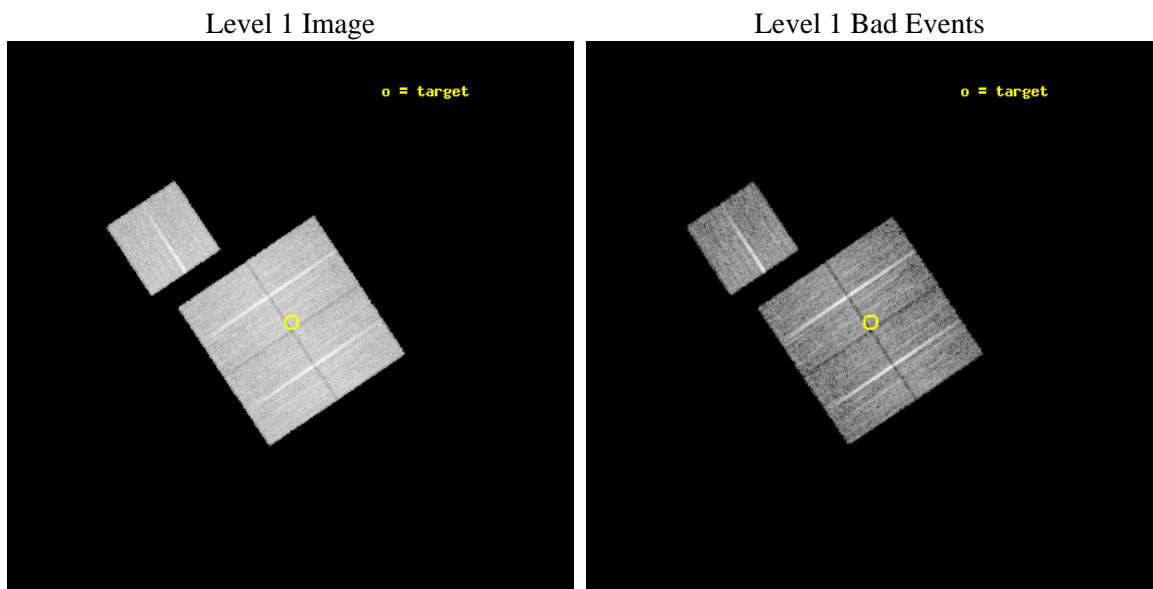
seq_num	800403	Sequence number
obs_id	4957	Observation id
title	The Cluster A3627 -- The Nearest Major Merger	Proposal title
observer	Dr. Christine Jones	Principal investigator
object	Abell 3627	Source name
dtcycle	0	
cycle	P	events from which exps? Prim/Second/Both
ra_targ	243.6821	Observer's specified target RA [deg]
dec_targ	-60.643364	Observer's specified target Dec [deg]
ra_nom	243.6872927457	Nominal RA [deg]
dec_nom	-60.647245136326	Nominal Dec [deg]
roll_nom	326.21321454462	Nominal Roll [deg]
revision	3	Processing version of data
ontime	14299.514234871	Sum of GTIs [s]
livetime	14112.680554243	Livetime [s]
ontime0	14299.391114861	Sum of GTIs [s]
ontime1	14296.29117462	Sum of GTIs [s]
ontime2	14296.33220467	Sum of GTIs [s]
ontime3	14299.514234871	Sum of GTIs [s]
ontime6	14299.350074857	Sum of GTIs [s]
l2events	80473	Number of level 2 events



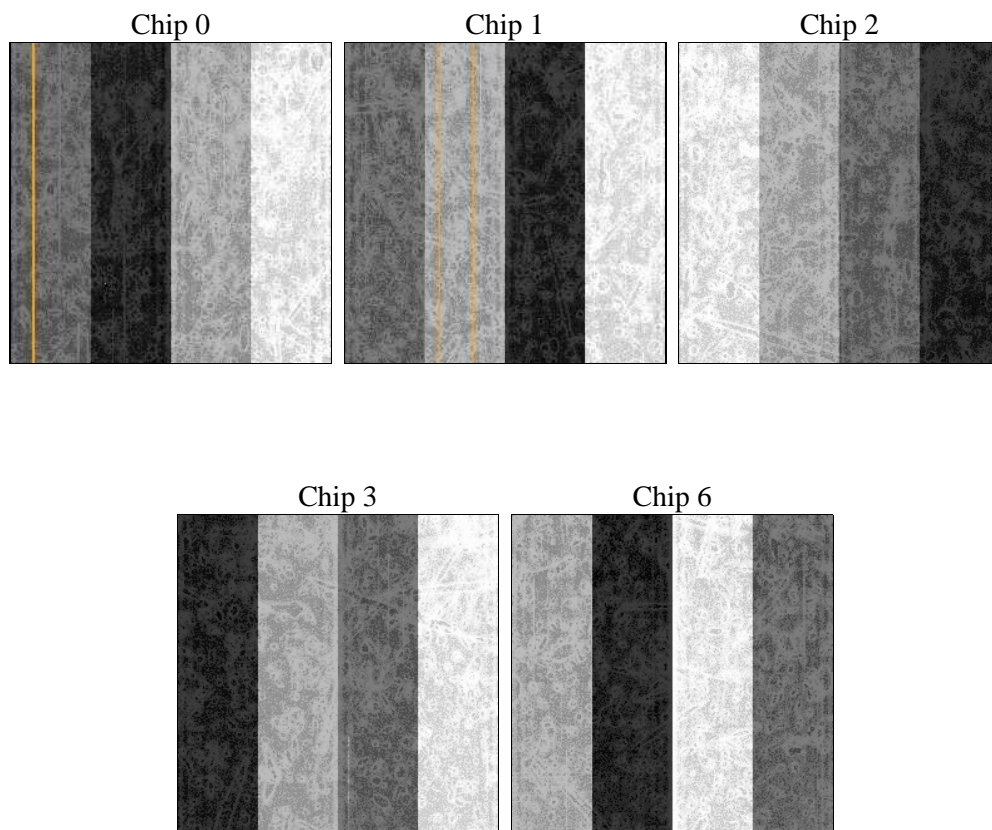
2 OBI

2.1 OBI

2.1.1 Images



2.1.2 Bias



2.1.3 Parameters

obi_num	0	Obi number	sched_exp_time	14526.000000	[s] Scheduled observation exposure time
ascdsver	8.4.5	Processing system revision	ontime	14299.514234871	Sum of GTIs [s]
caldsver	4.5.2	 	ontime0	14299.391114861	Sum of GTIs [s]
date	2012-12-03T01:19:58	Date and time of file creation	ontime1	14296.29117462	Sum of GTIs [s]
revision	3	Processing version of data	ontime2	14296.33220467	Sum of GTIs [s]
			ontime3	14299.514234871	Sum of GTIs [s]
			ontime6	14299.350074857	Sum of GTIs [s]
			l1events	490236	Number of level 1 events

2.1.4 Events

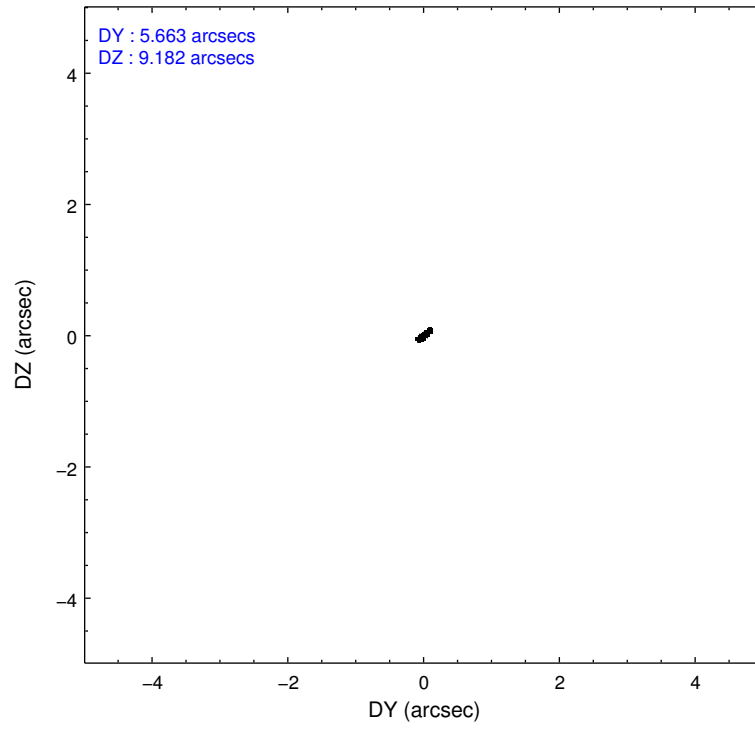
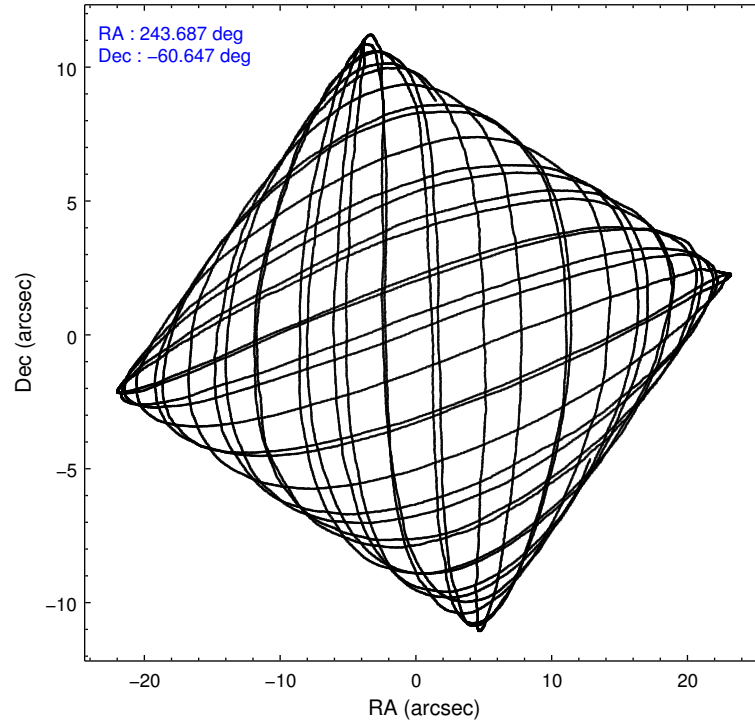
	ccd 0	ccd 1	ccd 2	ccd 3	ccd 6
level 1 events	102146	100234	100881	96389	90586
rejected events	76162	76863	84997	81073	80176
rejected %	74%	76%	84%	84%	88%

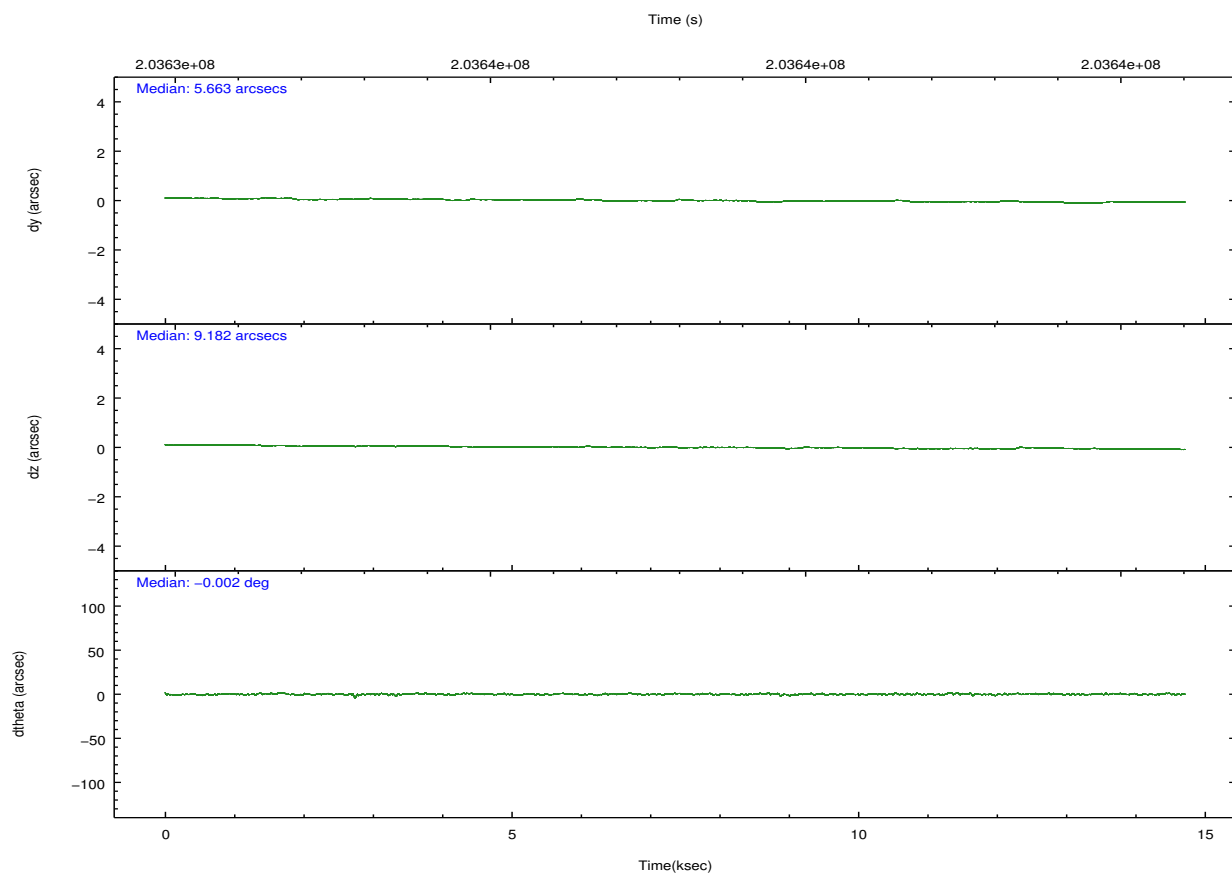
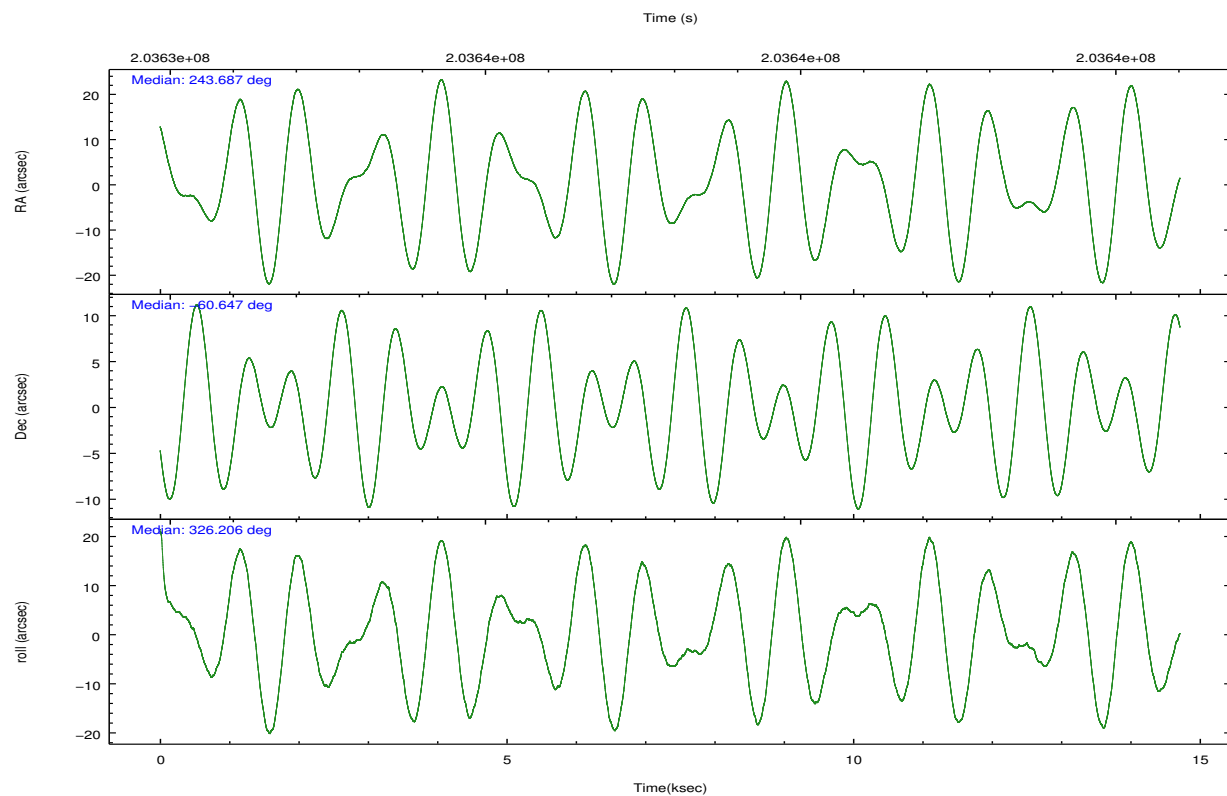
	ccd 0	ccd 1	ccd 2	ccd 3	ccd 6
grade 0 events	16743	14485	8889	8616	4308
	16%	14%	8%	8%	4%
grade 1 events	110	97	72	65	49
	0%	0%	0%	0%	0%
grade 2 events	3913	3554	2884	2451	2035
	3%	3%	2%	2%	2%
grade 3 events	1575	1555	1181	1215	1091
	1%	1%	1%	1%	1%
grade 4 events	1514	1481	1152	1239	1075
	1%	1%	1%	1%	1%
grade 5 events	3156	3429	3051	3479	3665
	3%	3%	3%	3%	4%
grade 6 events	2251	2303	1783	1796	1904
	2%	2%	1%	1%	2%
grade 7 events	72884	73330	81869	77528	76459
	71%	73%	81%	80%	84%

2.2 Compared Parameters

Parameter	Planned	Actual	Parameter	Planned	Actual
Instrument	ACIS	ACIS	Obspar format version number	7	7
Detector	ACIS-01236	ACIS-01236	Obspar file type	PREDICTED	ACTUAL
Grating	NONE	NONE	Obspar update status	NONE	UPDATED
Data mode	VFAINT	VFAINT	Number of optional ACIS chips dropped	0	0
Observation mode	POINTING	POINTING	On-chip summing requested	N	N
[deg] Pointing RA	243.631530	243.6872927456987	Subarray requested	NONE	NONE
[deg] Pointing Dec	-60.645520	-60.64724513632579	Alternating exposures requested	N	N
[deg] Pointing Roll	325.955921	326.2132145446229	[s] Primary exposure time	0.000000	3.1
[mm] SIM focus pos	-0.782348	-0.7809083437167272			
[mm] SIM defocus	0	0.001439871863259334			
[mm] SIM translation stage pos	-233.592463	-233.5874344608287			
[mm] SIM translation stage offset	0	-0.005018542100998502			
[s] Observation start time (MET)	203630757.184000	203630381.25208			
Observation start date	2004-06-14T20:04:53	2004-06-14T19:59:41			
[s] Observation end time (MET)	203645283.184000	203645416.97775			
Observation end date	2004-06-15T00:06:59	2004-06-15T00:10:16			
Read mode	TIMED	TIMED			

2.3 Aspect



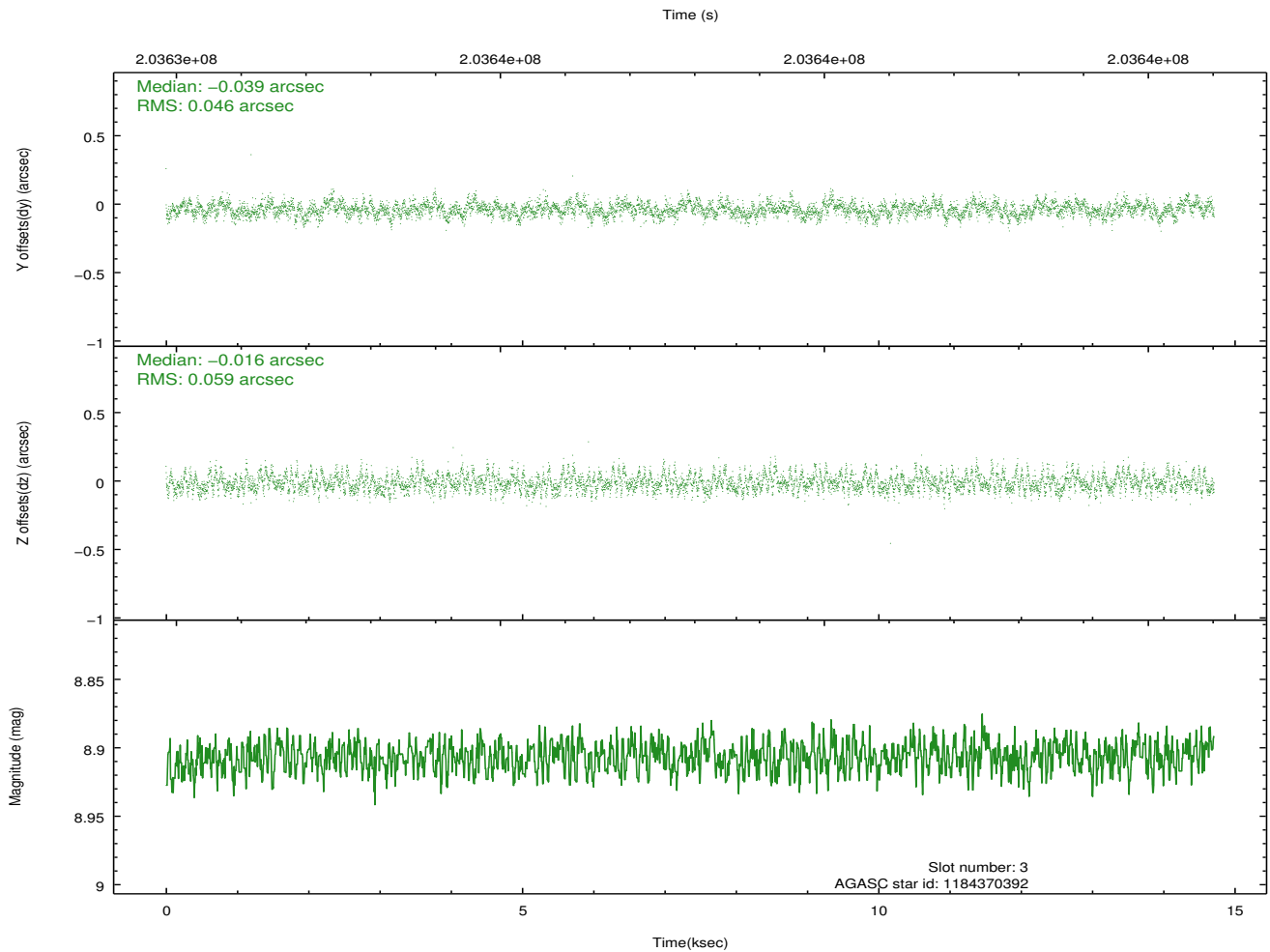
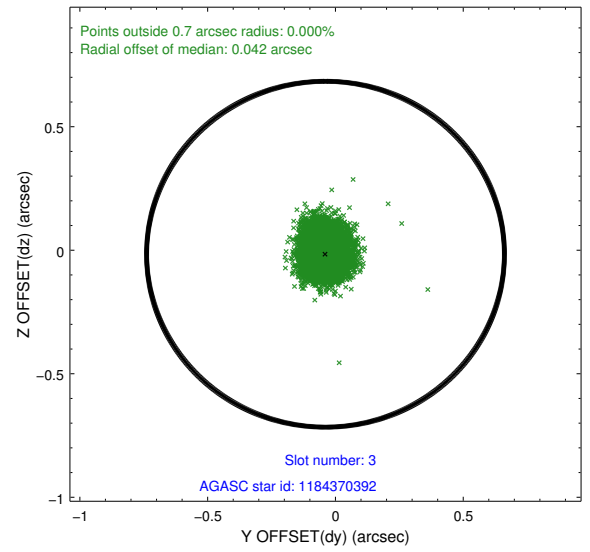
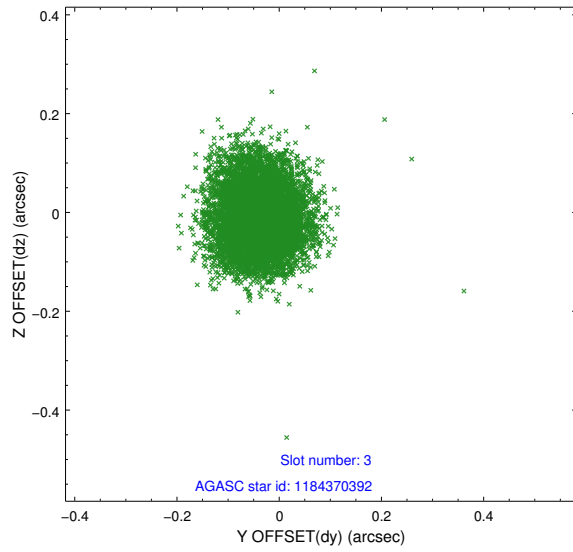


Slot Statistics

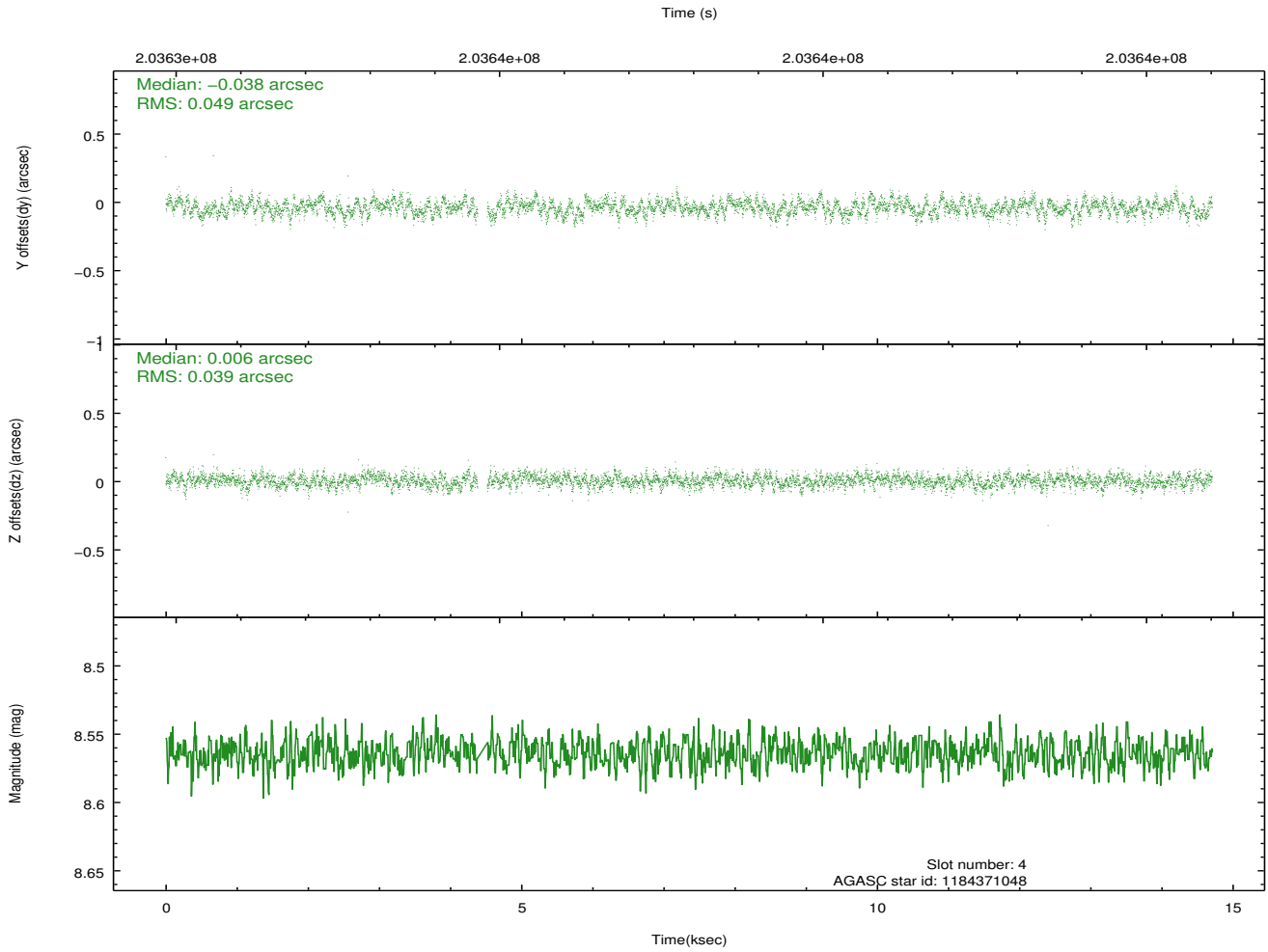
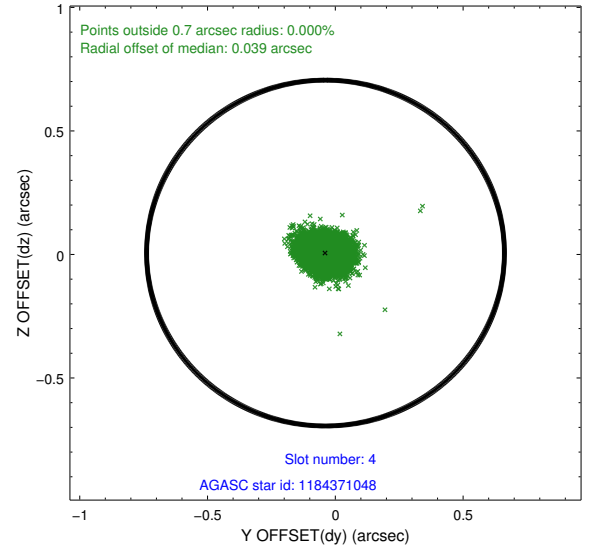
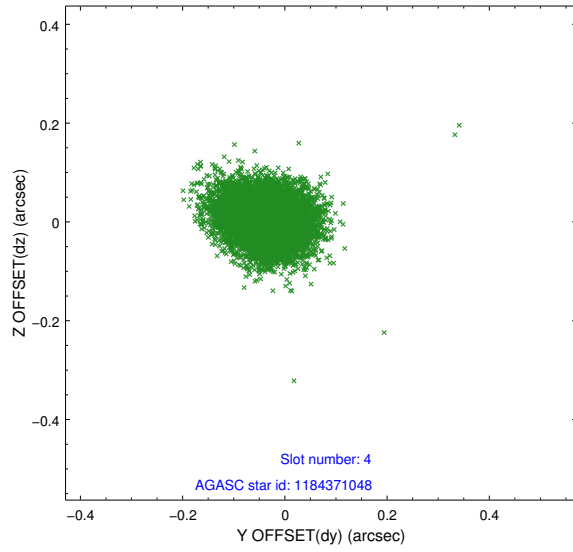
slot	status	id	mag	n_pts	med_dy	med_dz	dr1	dr2	ra	dec	mean_y	mean_z
0	FID	ACIS-I-1	7.24	3588	-0.004	0.035	0.009	0.015	0.000000	0.000000	934.05	-832.60
1	FID	ACIS-I-4	7.19	3588	0.106	0.001	0.009	0.014	0.000000	0.000000	2154.37	1067.02
2	FID	ACIS-I-5	7.23	3588	-0.200	0.034	0.007	0.013	0.000000	0.000000	-1813.75	1065.25
3	GUIDE	1184370392	8.91	7175	-0.039	-0.016	0.079	0.128	242.836162	-61.139154	-145.09	-2253.00
4	GUIDE	1184371048	8.56	7106	-0.038	0.006	0.065	0.106	243.777147	-61.267740	1463.43	-1715.24
5	GUIDE	1184371152	8.29	7177	0.008	-0.038	0.058	0.094	243.531081	-60.141333	-1164.96	1402.32
6	GUIDE	1184375696	8.69	7176	-0.058	-0.063	0.077	0.128	243.784369	-60.099738	-872.66	1781.42
7	GUIDE	1184511016	9.24	7172	0.127	0.108	0.079	0.133	245.305522	-60.469188	2126.85	2158.21

2.4 Star Slots

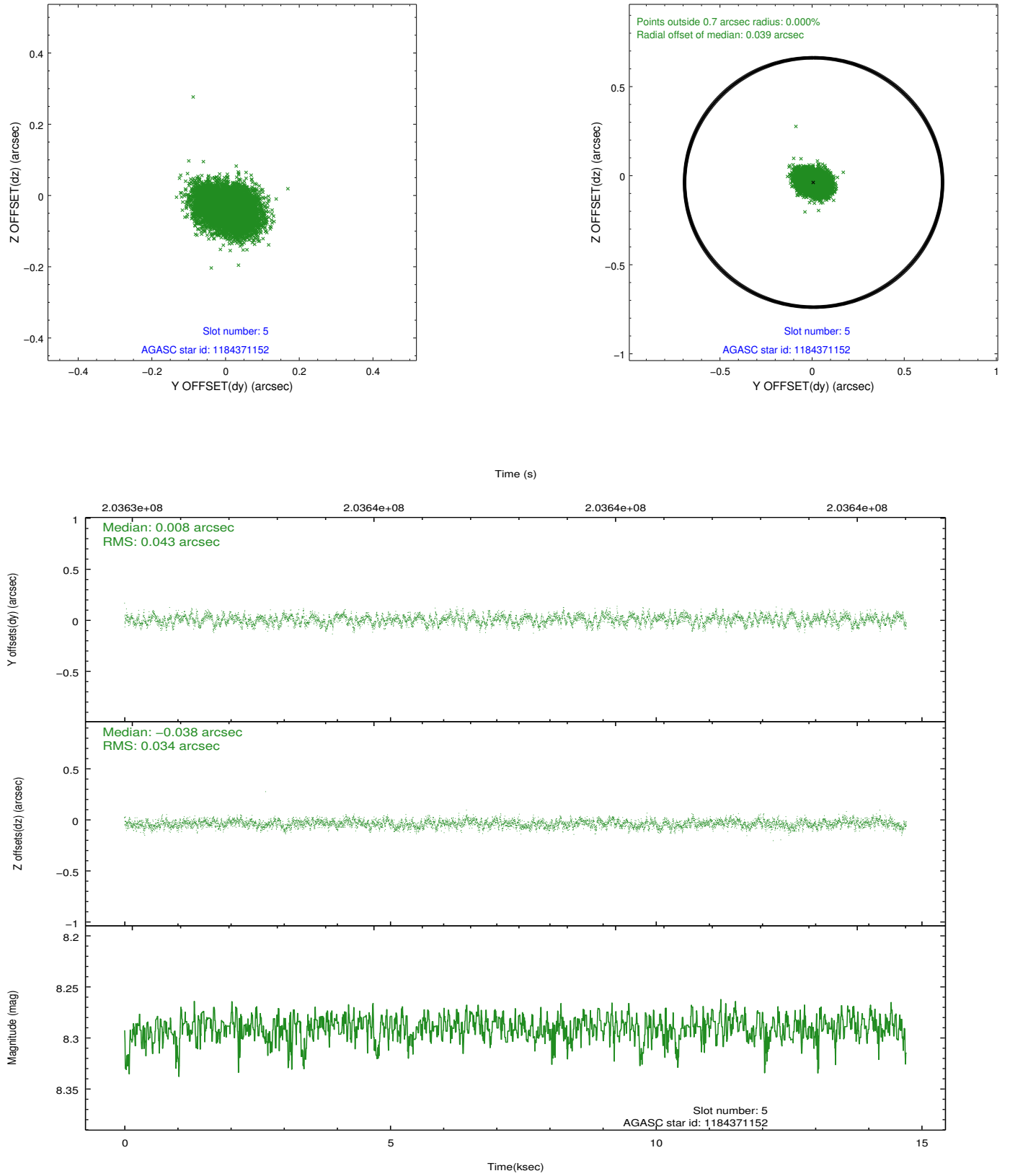
2.4.1 Slot 3



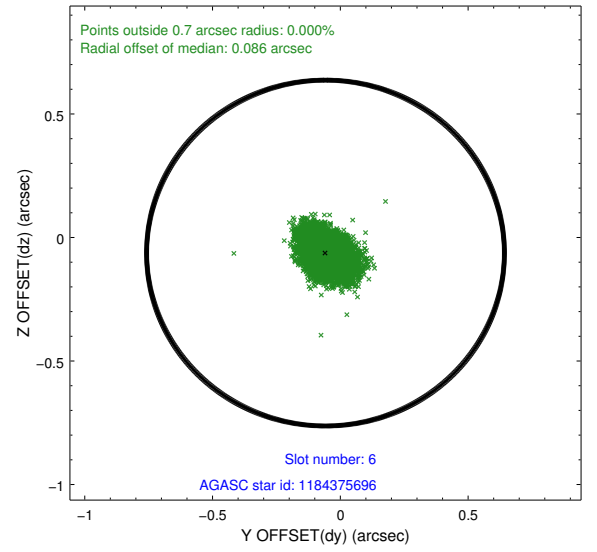
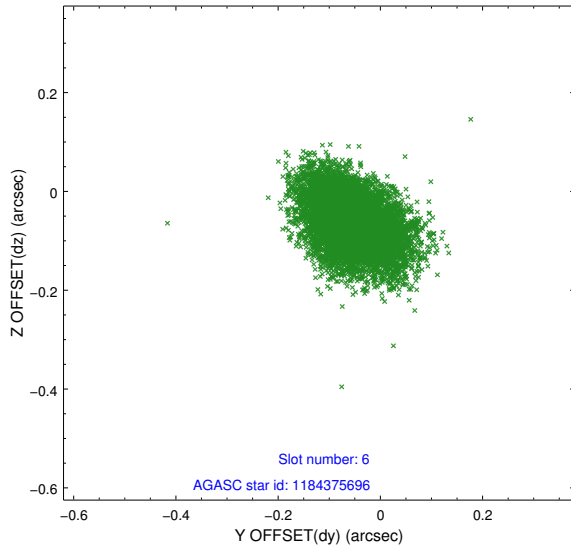
2.4.2 Slot 4



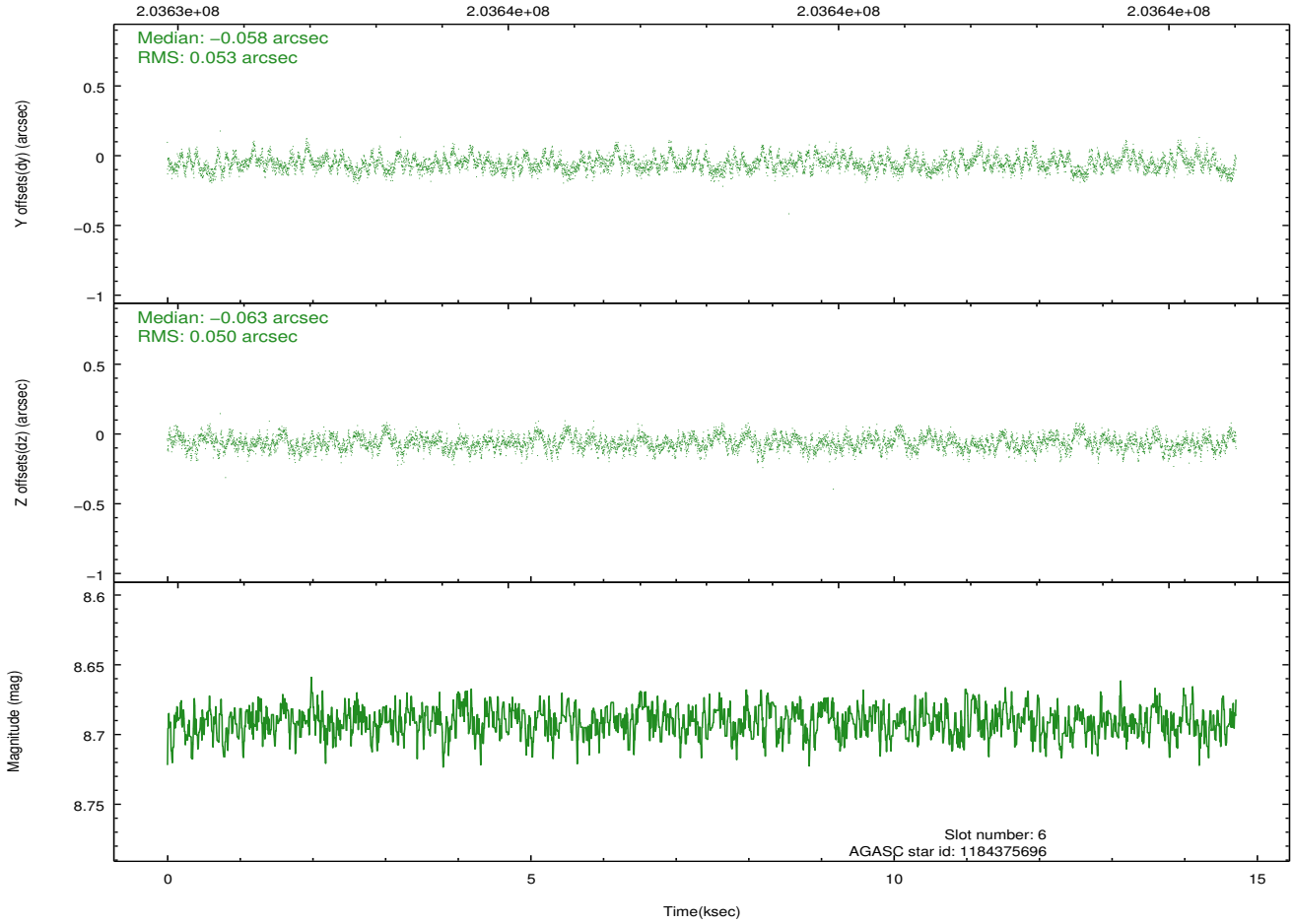
2.4.3 Slot 5



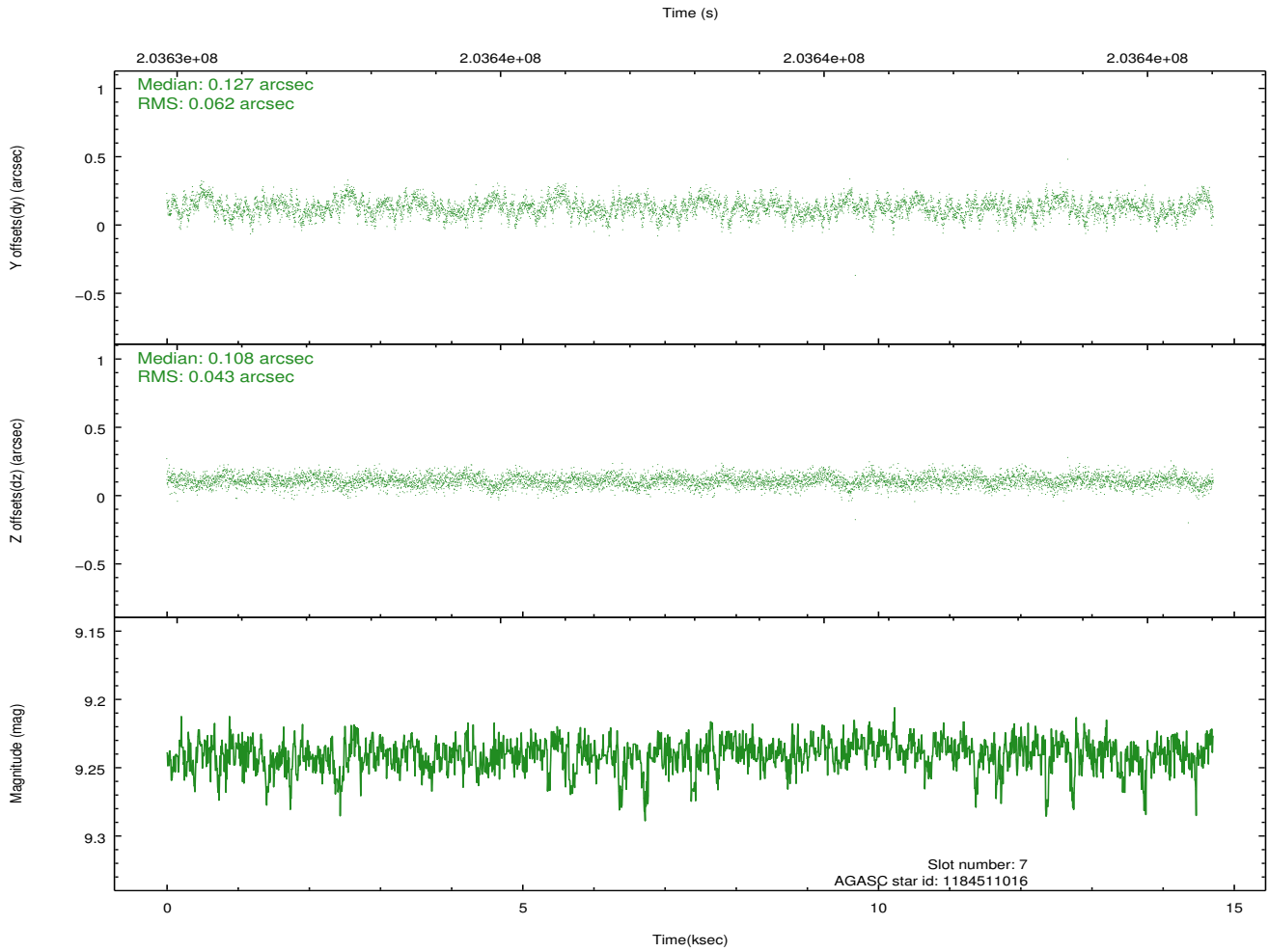
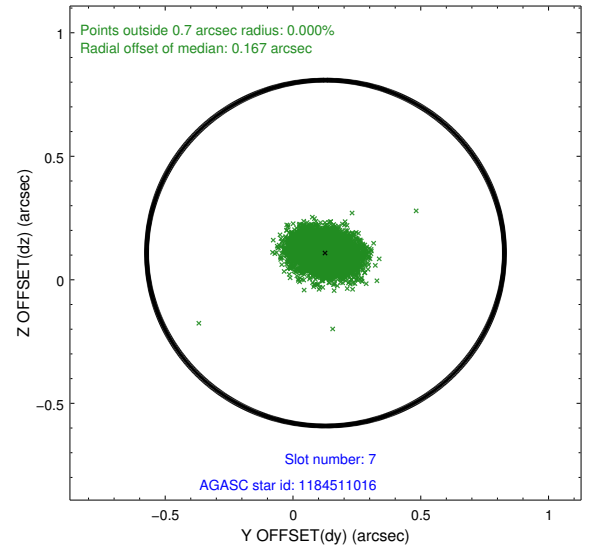
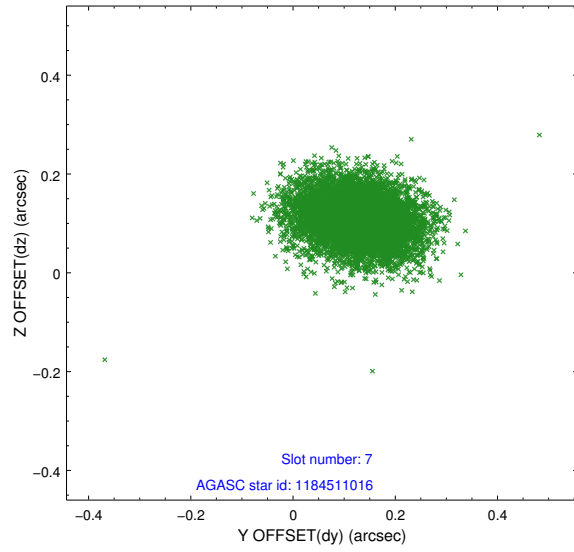
2.4.4 Slot 6



Time (s)

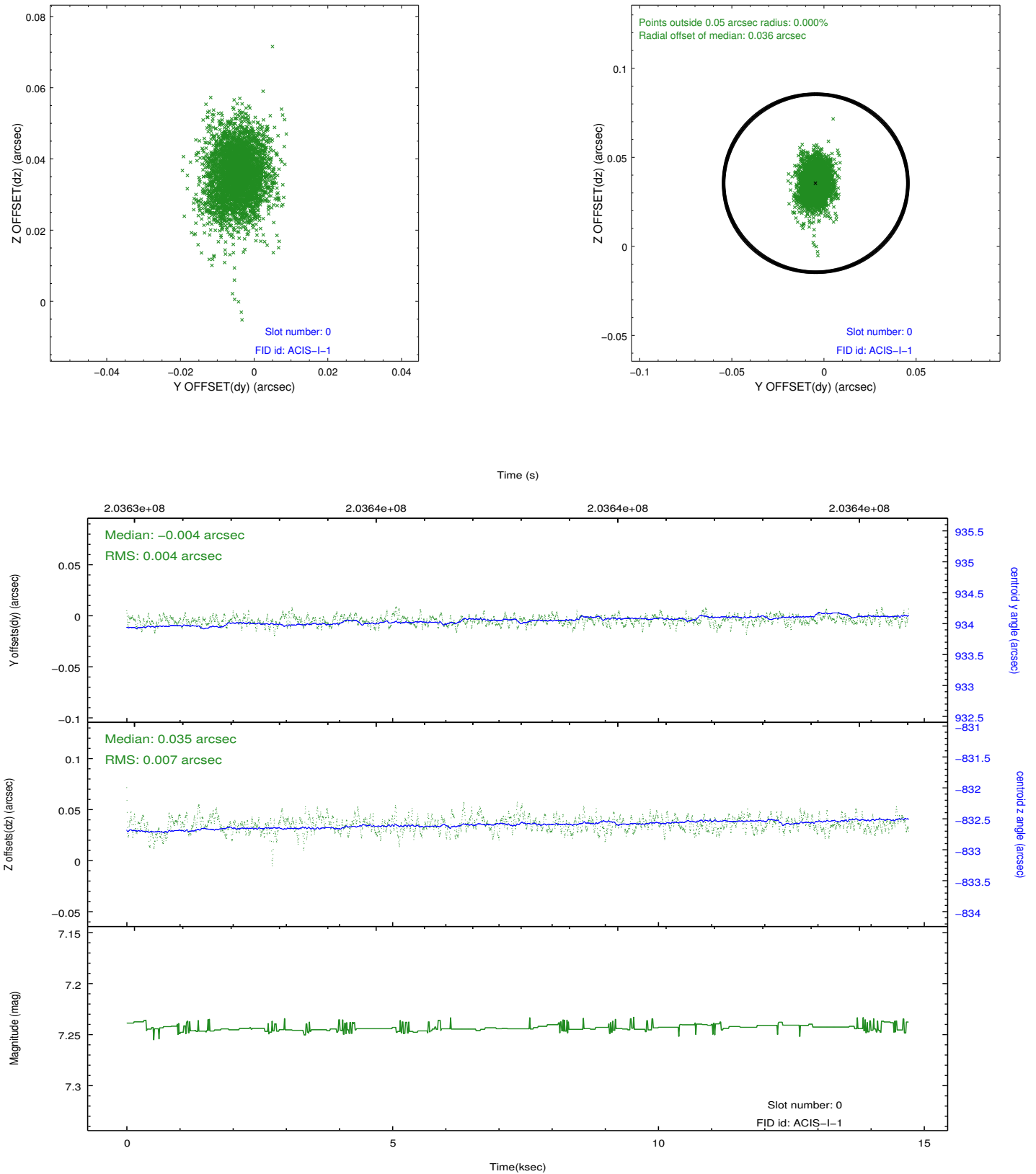


2.4.5 Slot 7

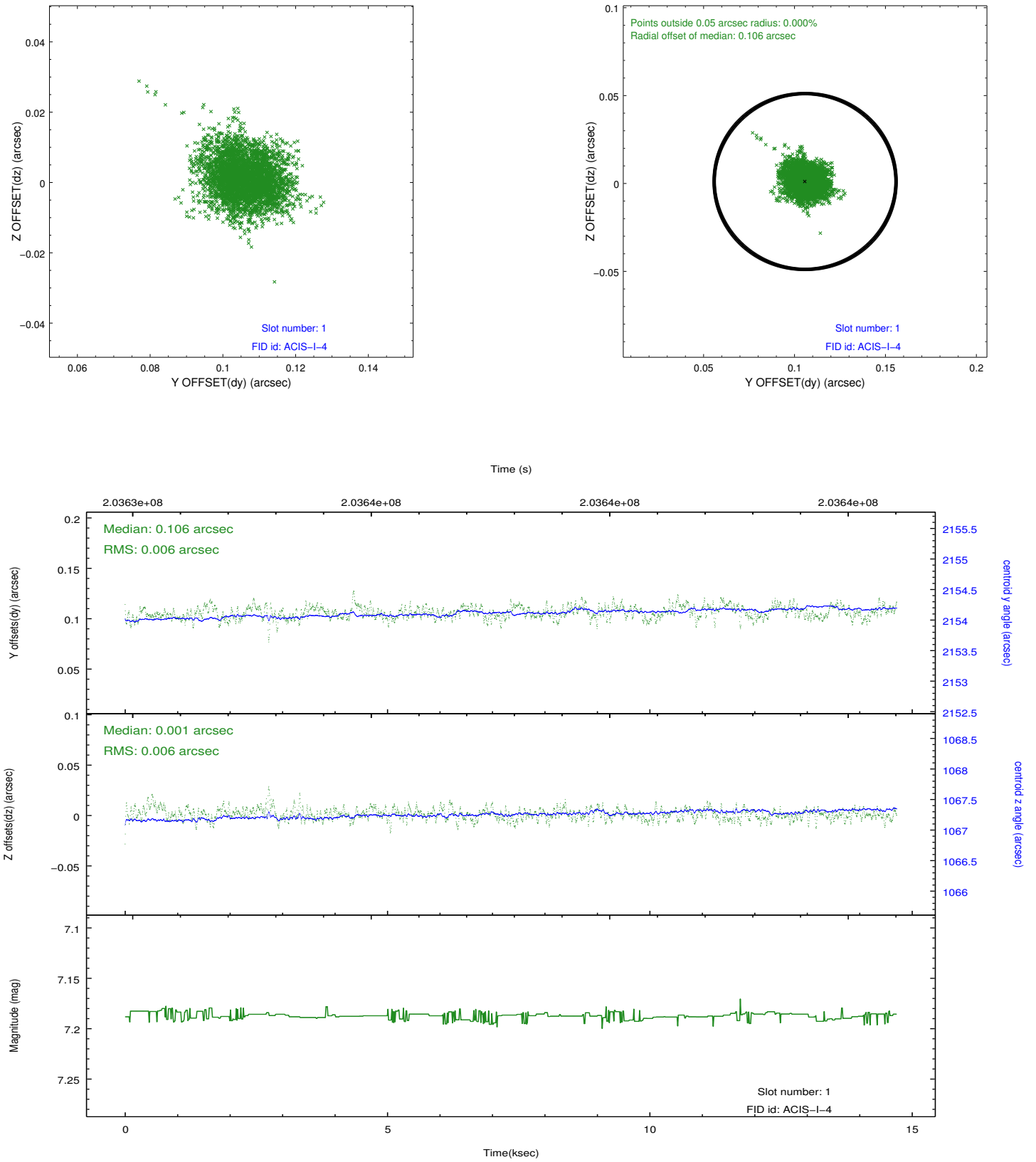


2.5 FID Slots

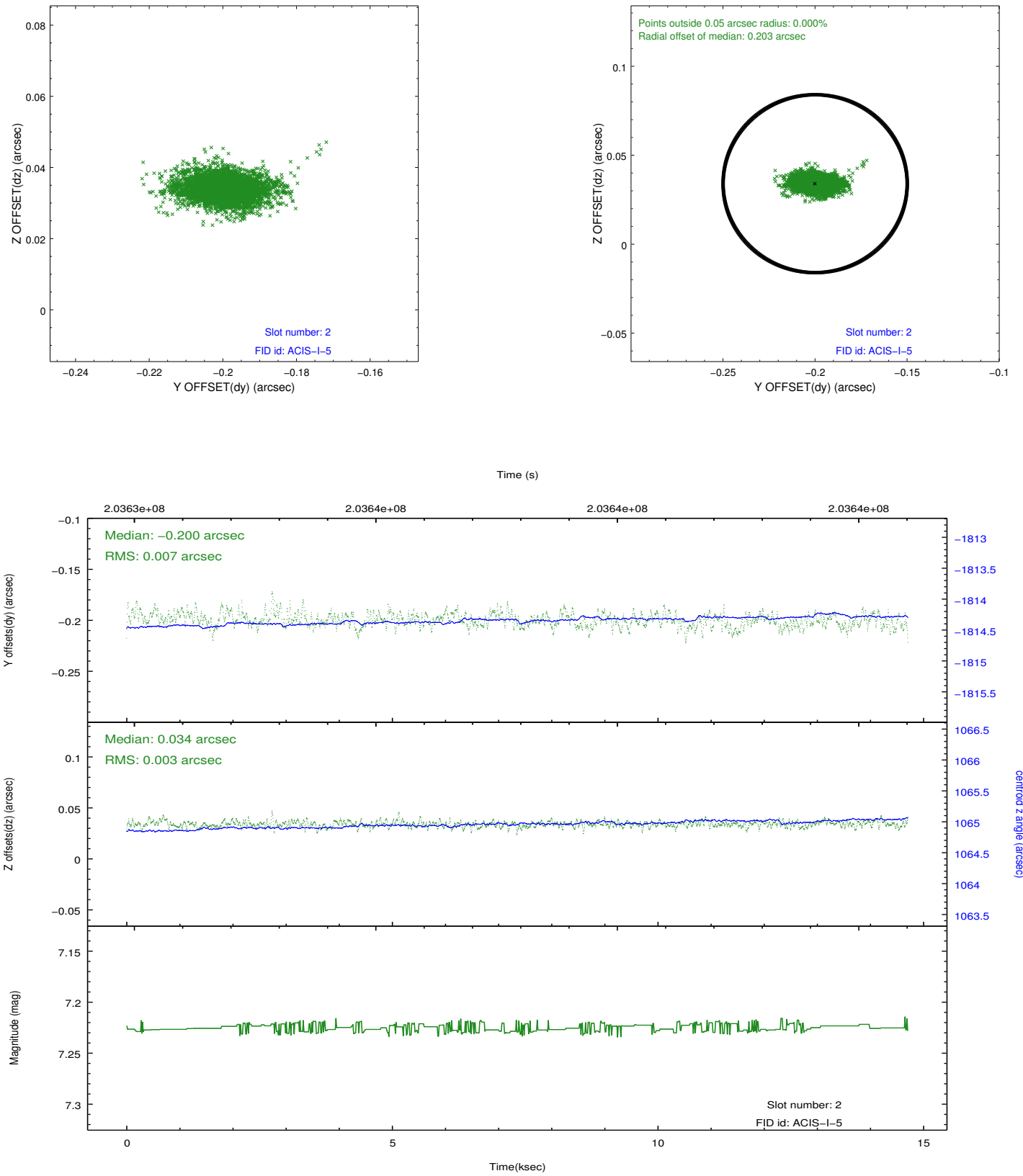
2.5.1 Slot 0



2.5.2 Slot 1



2.5.3 Slot 2



A Summary

A.1 Status

V&V Scientist	Jen Lauer
V&V Date (YYYY-MM-DD)	2012.12.18
V&V Edition	1
V&V Disposition and Status	OK
V&V Charge Time	14.3

A.2 Comments

Joint Proposal: XMM