

# V&V Reference Report

## L2 ASCDS Version : 7.6.7.2

Observation 4957 - L2 Version 001  
Chandra X-Ray Center

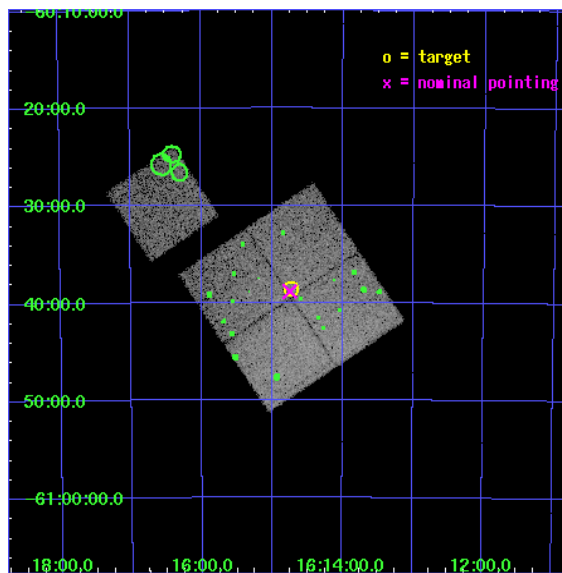
L2 Processing Date : May 1 2006

## Contents

<b>1</b>	<b>Front</b>	<b>2</b>
<b>2</b>	<b>OBI</b>	<b>3</b>
2.1	OBI . . . . .	3
2.1.1	Images . . . . .	3
2.1.2	Bias . . . . .	3
2.1.3	Parameters . . . . .	4
2.1.4	Events . . . . .	4
2.2	Compared Parameters . . . . .	5
2.3	Aspect . . . . .	6
2.4	Star Slots . . . . .	9
2.4.1	Slot 3 . . . . .	9
2.4.2	Slot 4 . . . . .	10
2.4.3	Slot 5 . . . . .	11
2.4.4	Slot 6 . . . . .	12
2.4.5	Slot 7 . . . . .	13
2.5	FID Slots . . . . .	14
2.5.1	Slot 0 . . . . .	14
2.5.2	Slot 1 . . . . .	15
2.5.3	Slot 2 . . . . .	16
<b>3</b>	<b>Point Sources</b>	<b>17</b>
<b>A</b>	<b>Summary</b>	<b>18</b>
A.1	Status . . . . .	18
A.2	Comments . . . . .	18

# 1 Front

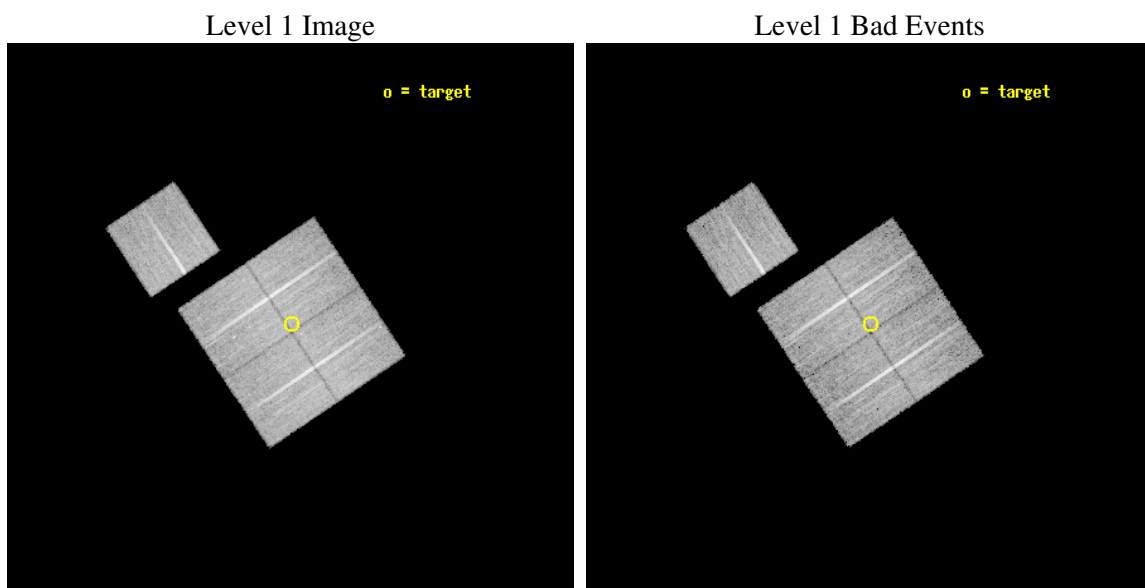
seq_num	800403
obs_id	4957
title	The Cluster A3627 -- The Nearest Major Merger
observer	Dr. Christine Jones
object	Abell 3627
dtcycle	0
cycle	P
ra_targ	243.6821
dec_targ	-60.643364
ra_nom	243.68724576338
dec_nom	-60.647229605003
roll_nom	326.21317358725
revision	2
ontime	14300.299972504
livetime	14113.456025636
ontime0	14300.299972504
ontime1	14297.158992261
ontime2	14297.159002244
ontime3	14300.299972504
ontime6	14300.299972504
l2events	80610



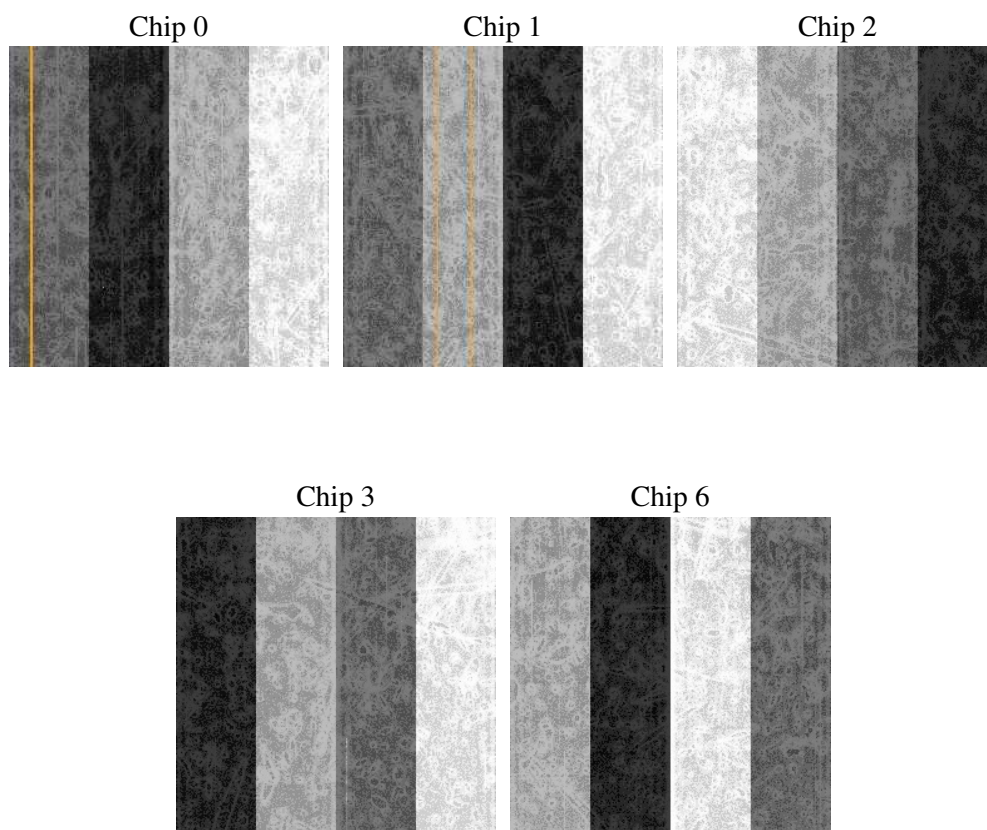
## 2 OBI

### 2.1 OBI

#### 2.1.1 Images



#### 2.1.2 Bias



### 2.1.3 Parameters

obi_num	0
ascdsver	7.6.7.2
caldsver	3.2.1
date	2006-05-01T18:25:09
revision	2

sched_exp_time	14526.000000
ontime	14304.152693003
ontime0	14304.152693003
ontime1	14301.01171276
ontime2	14301.011682898
ontime3	14304.152693003
ontime6	14304.152693003
l1events	490236

### 2.1.4 Events

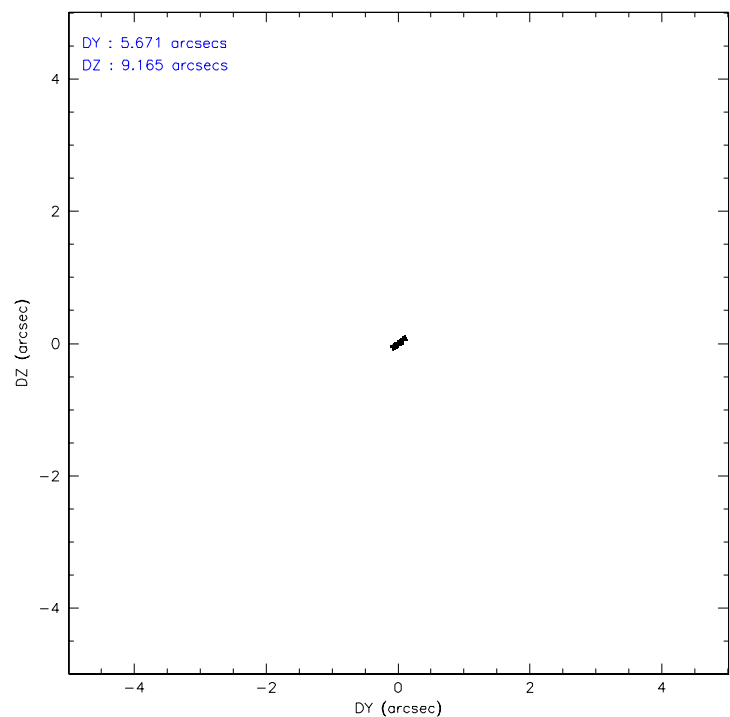
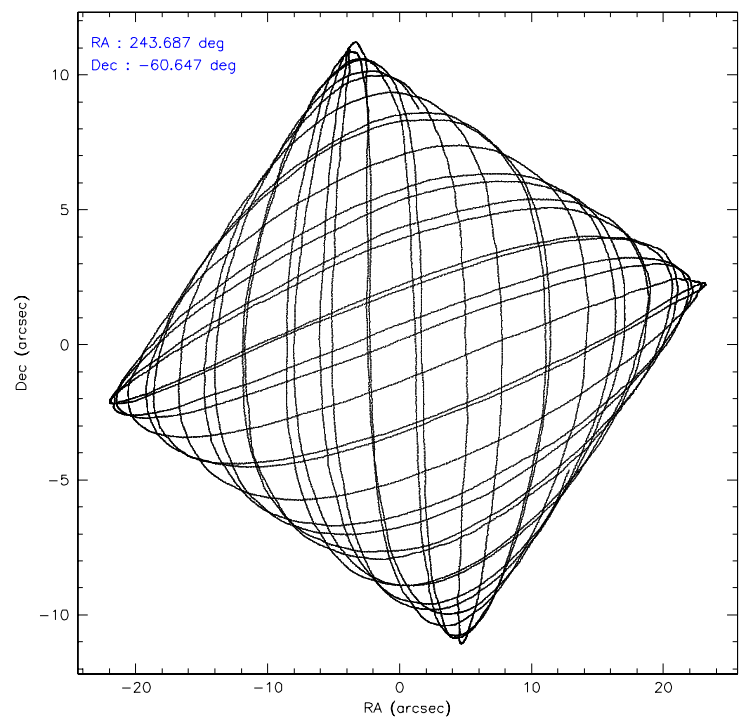
	<b>ccd 0</b>	<b>ccd 1</b>	<b>ccd 2</b>	<b>ccd 3</b>	<b>ccd 6</b>
level 1 events	102146	100234	100881	96389	90586
rejected events	76156	76859	84996	81073	80175
rejected %	74%	76%	84%	84%	88%

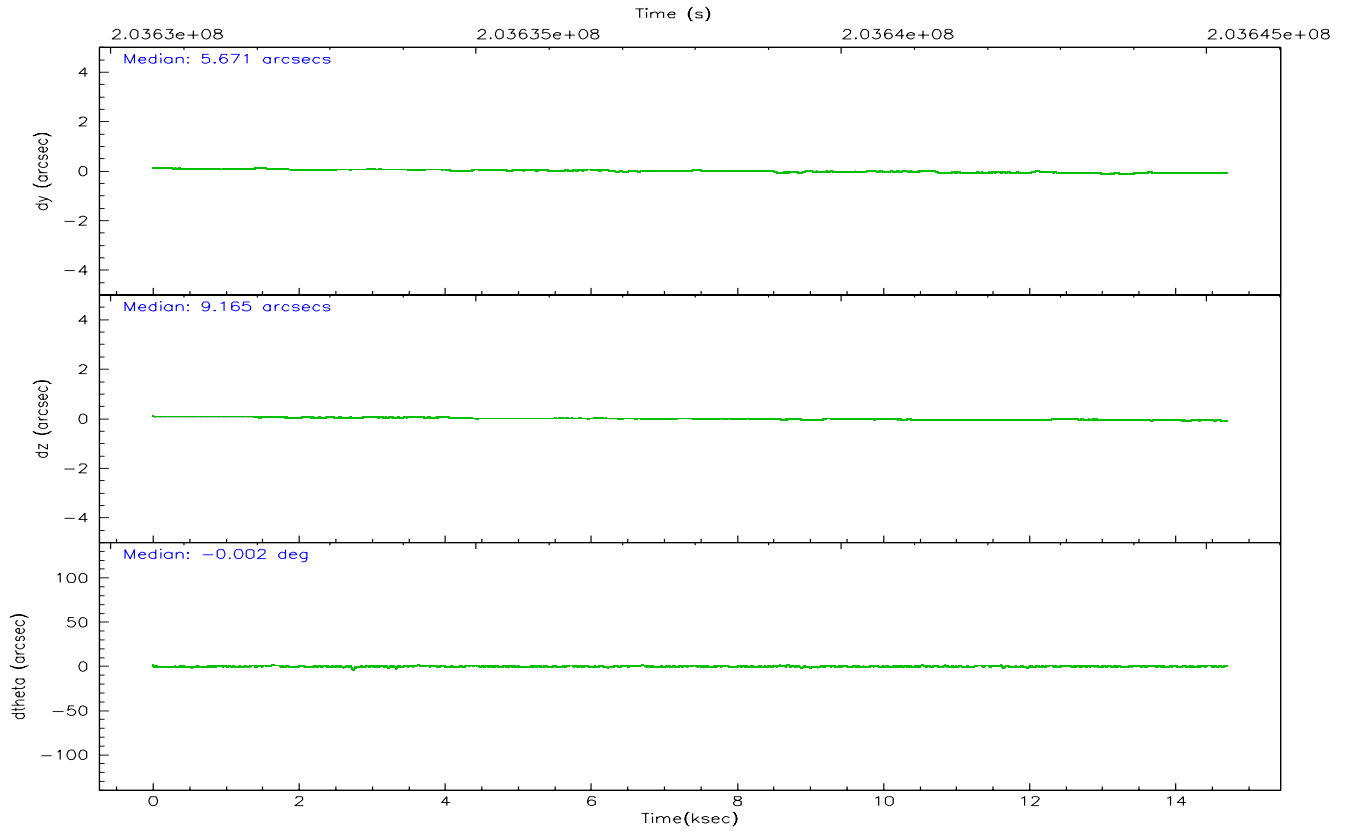
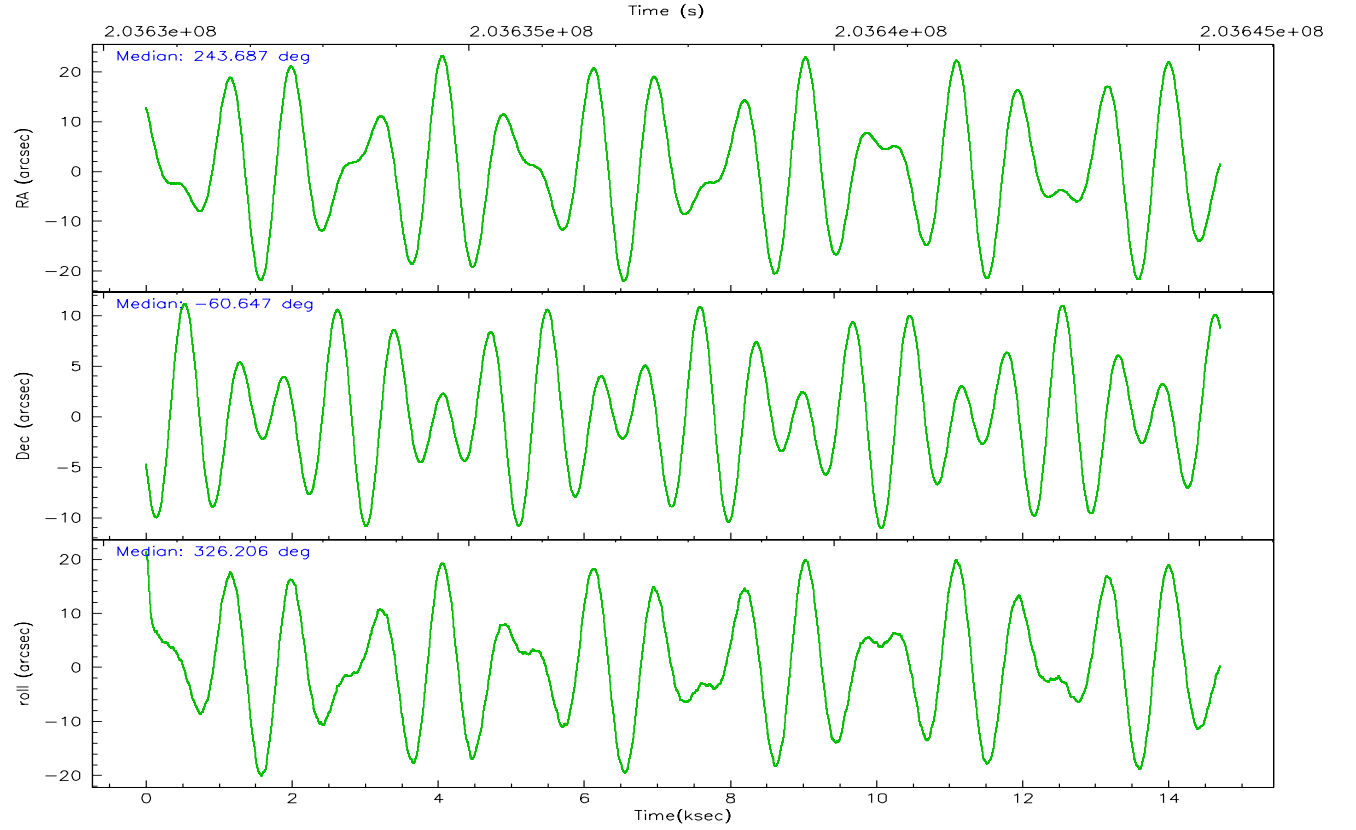
	<b>ccd 0</b>	<b>ccd 1</b>	<b>ccd 2</b>	<b>ccd 3</b>	<b>ccd 6</b>
grade 0 events	16743	14484	8889	8616	4308
	16%	14%	8%	8%	4%
grade 1 events	110	97	72	65	49
	0%	0%	0%	0%	0%
grade 2 events	3913	3555	2884	2451	2035
	3%	3%	2%	2%	2%
grade 3 events	1575	1555	1181	1215	1091
	1%	1%	1%	1%	1%
grade 4 events	1514	1481	1152	1239	1075
	1%	1%	1%	1%	1%
grade 5 events	3155	3429	3050	3479	3665
	3%	3%	3%	3%	4%
grade 6 events	2251	2303	1784	1796	1904
	2%	2%	1%	1%	2%
grade 7 events	72885	73330	81869	77528	76459
	71%	73%	81%	80%	84%

## 2.2 Compared Parameters

Parameter	Planned	Actual	Parameter	Planned	Actual
Instrument	ACIS	ACIS	Obspar format version number	6	6
Detector	ACIS-01236	ACIS-01236	Obspar file type	PREDICTED	ACTUAL
Grating	NONE	NONE	Obspar update status	NONE	UPDATED
Data mode	VFAINT	VFAINT	On-chip summing requested	N	N
Observation mode	POINTING	POINTING	Subarray requested	NONE	NONE
Pointing RA	243.631530	243.6872457633761	Alternating exposures requested	N	N
Pointing Dec	-60.645520	-60.64722960500254	Primary exposure time	0.000000	3.1
Pointing Roll	325.955921	326.2131735872488			
SIM focus pos (mm)	-0.782348	-0.7809083437167272			
SIM defocus (mm)	0	0.001439871863259334			
SIM translation stage pos (mm)	-233.592463	-233.5874344608287			
SIM translation stage offset (mm)	0	-0.005018542100998502			
Observation start time	203630757.184000	203630381.25208			
Observation start date	2004-06-14T20:04:53	2004-06-14T19:59:41			
Observation end time	203645283.184000	203645416.97775			
Observation end date	2004-06-15T00:06:59	2004-06-15T00:10:16			
Read mode	TIMED	TIMED			

## 2.3 Aspect





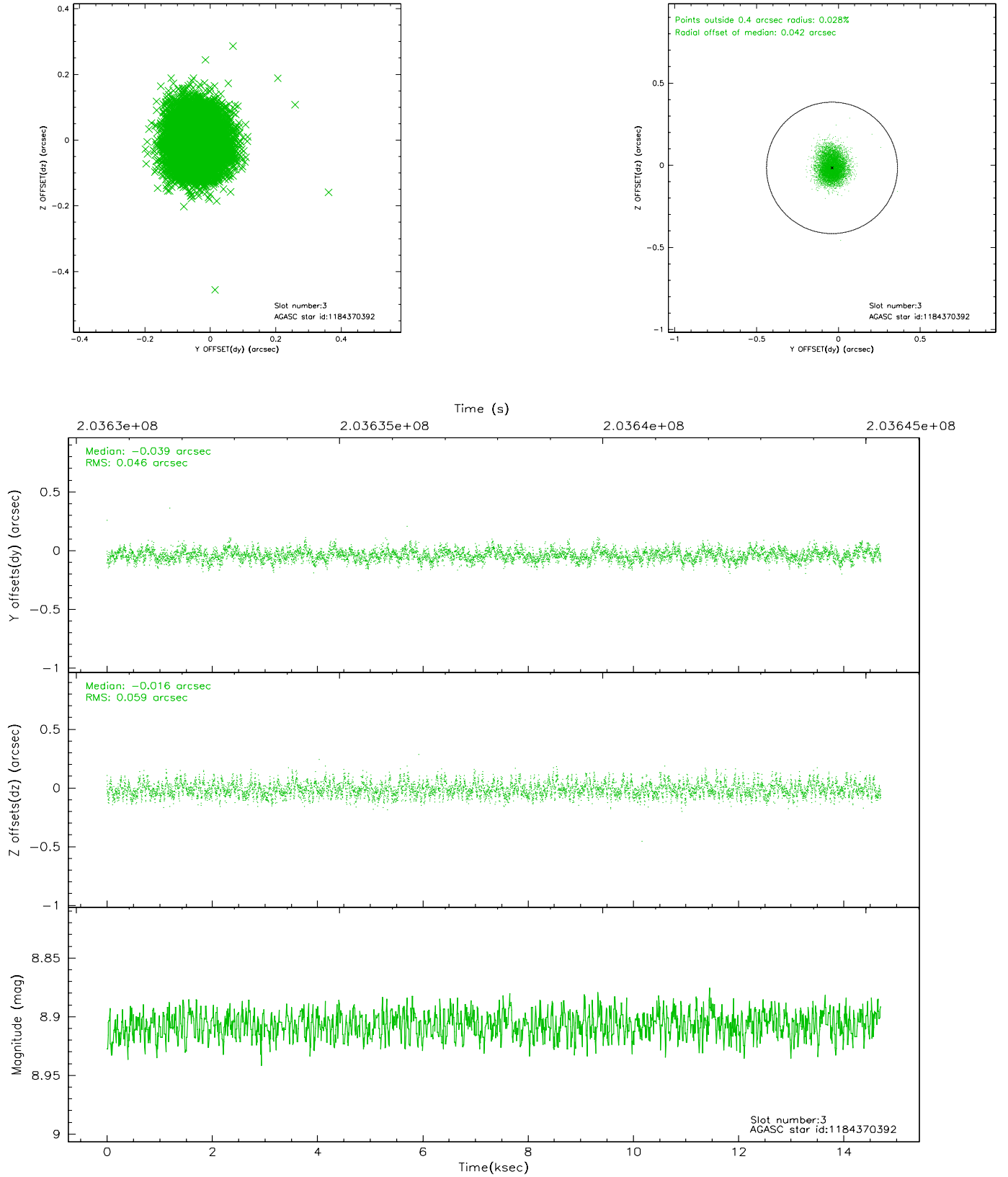
### Slot Statistics

slot	status	id	mag	n_pts	med_dy	med_dz	dr1	dr2	ra	dec	mean_y	mean_z
0	FID	ACIS-I-1	7.24	3588	-0.014	0.059	0.008	0.015	0.000000	0.000000	934.03	-832.56
1	FID	ACIS-I-4	7.19	3588	0.074	-0.011	0.008	0.014	0.000000	0.000000	2154.33	1067.03
2	FID	ACIS-I-5	7.23	3588	-0.159	0.022	0.007	0.013	0.000000	0.000000	-1813.72	1065.26
3	GUIDE	1184370392	8.91	7175	-0.039	-0.016	0.079	0.128	242.836162	-61.139154	-145.09	-2253.00
4	GUIDE	1184371048	8.56	7106	-0.038	0.006	0.065	0.106	243.777147	-61.267740	1463.43	-1715.24
5	GUIDE	1184371152	8.29	7177	0.008	-0.038	0.058	0.094	243.531081	-60.141333	-1164.96	1402.32
6	GUIDE	1184375696	8.69	7176	-0.058	-0.063	0.077	0.128	243.784369	-60.099738	-872.66	1781.42
7	GUIDE	1184511016	9.24	7172	0.127	0.108	0.079	0.133	245.305522	-60.469188	2126.85	2158.21

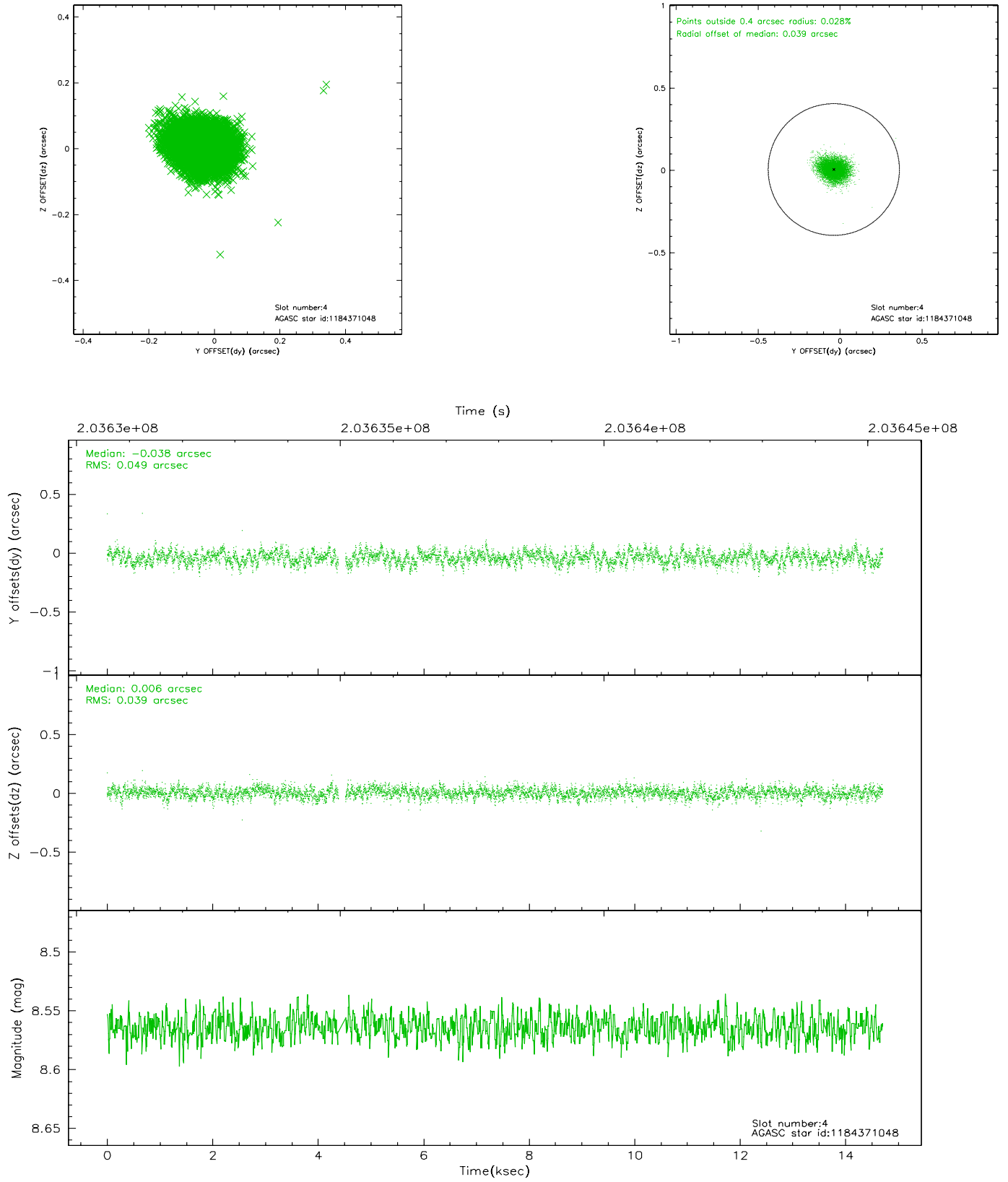


## 2.4 Star Slots

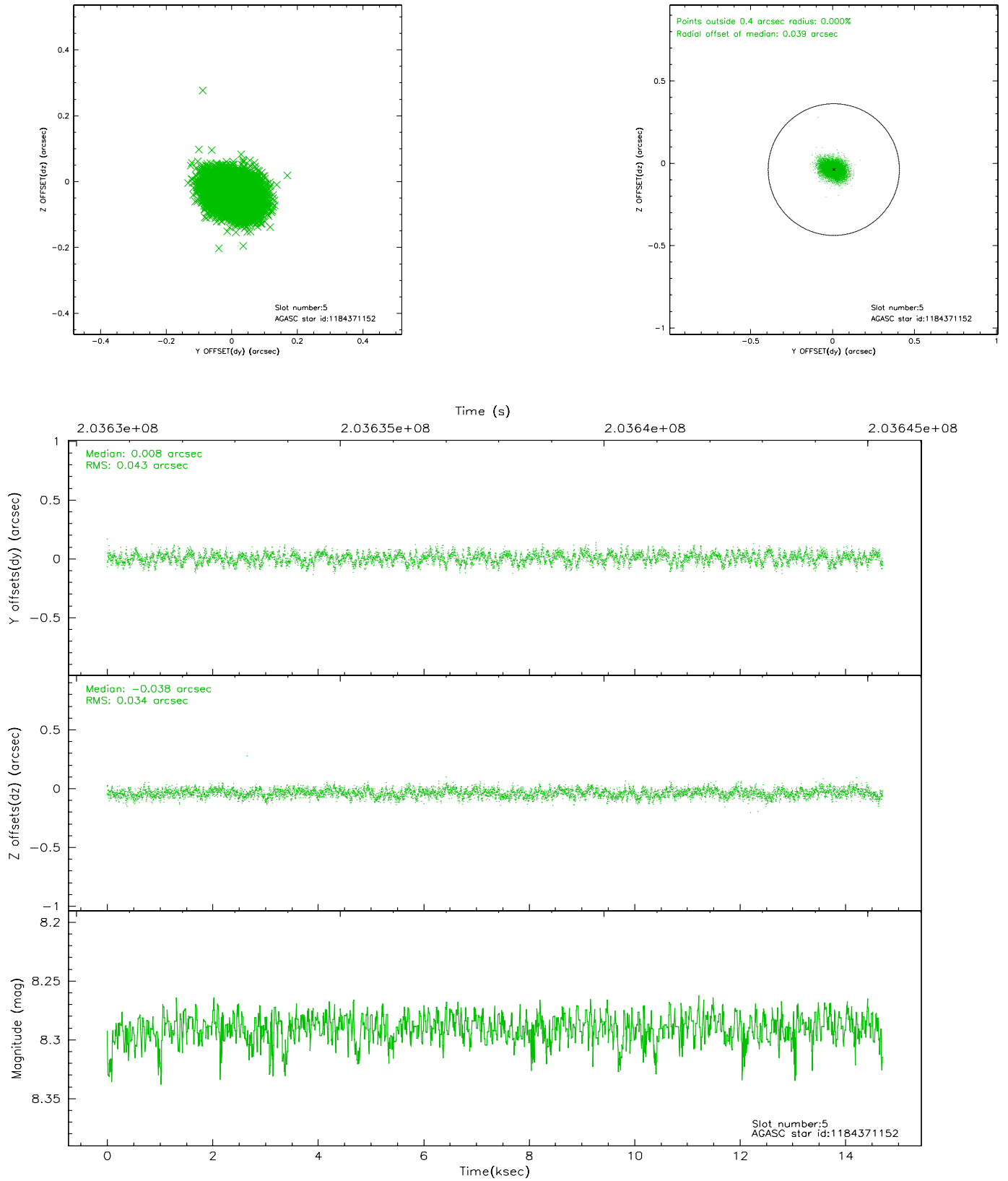
### 2.4.1 Slot 3



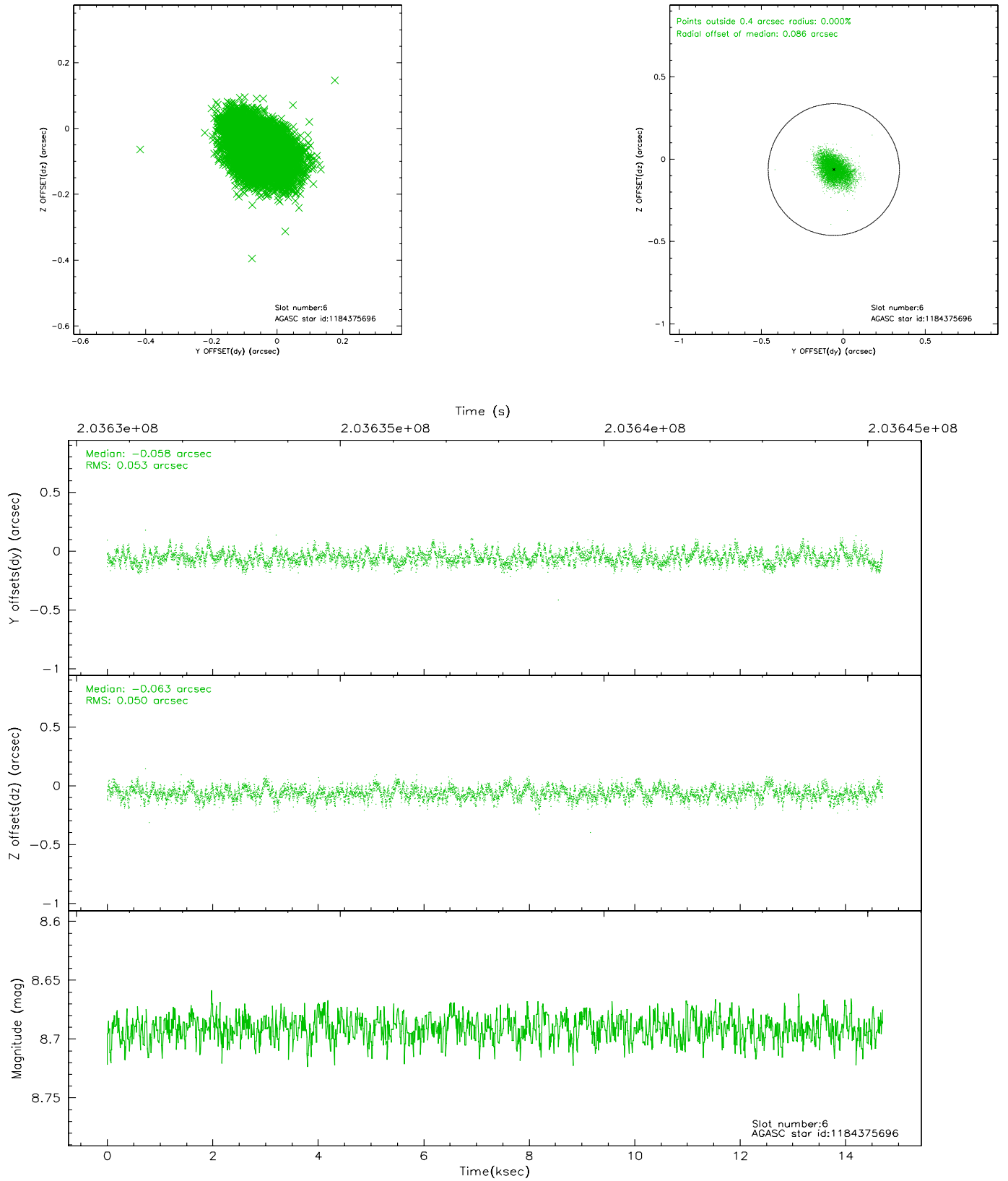
## 2.4.2 Slot 4



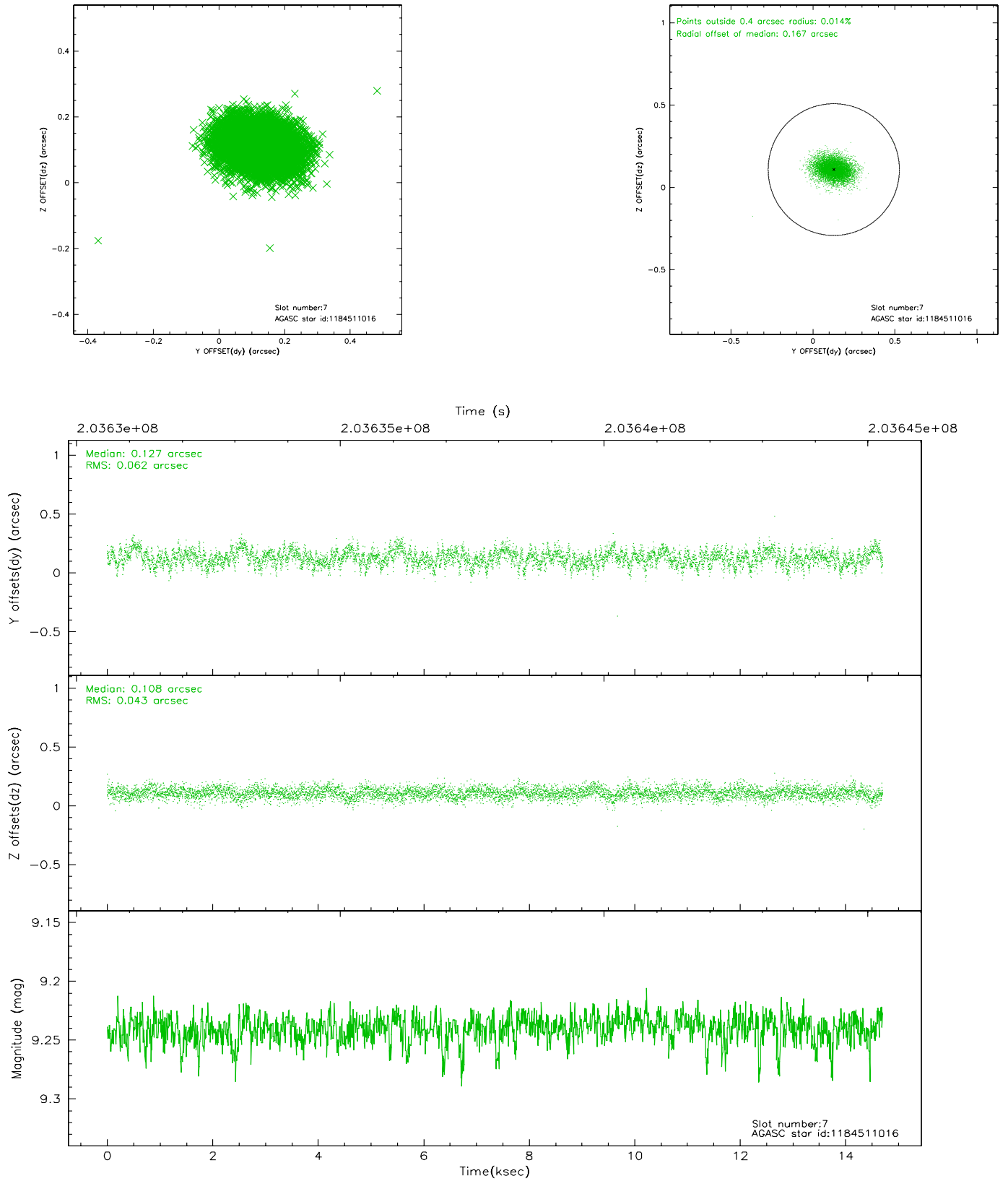
### 2.4.3 Slot 5



## 2.4.4 Slot 6

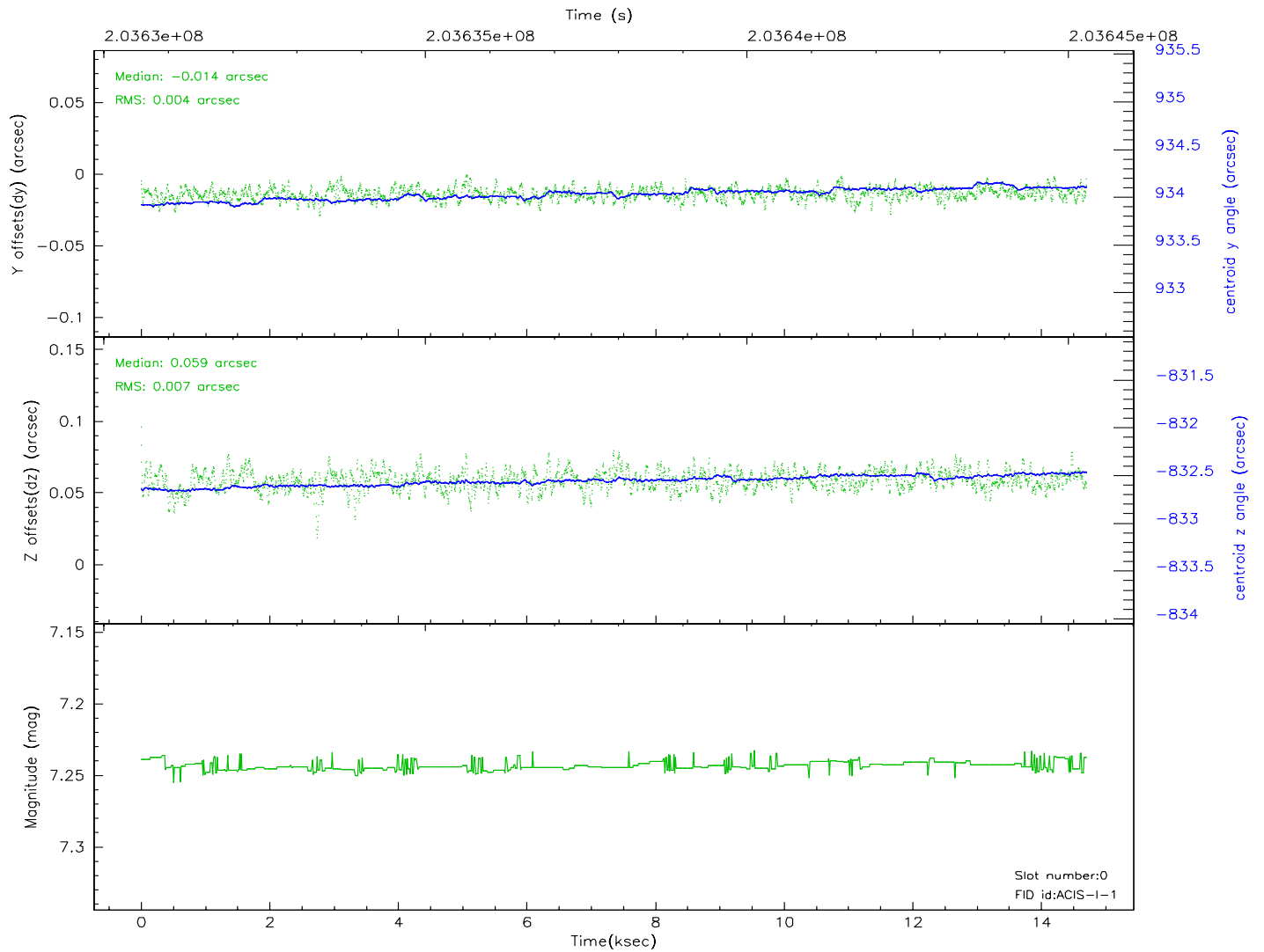
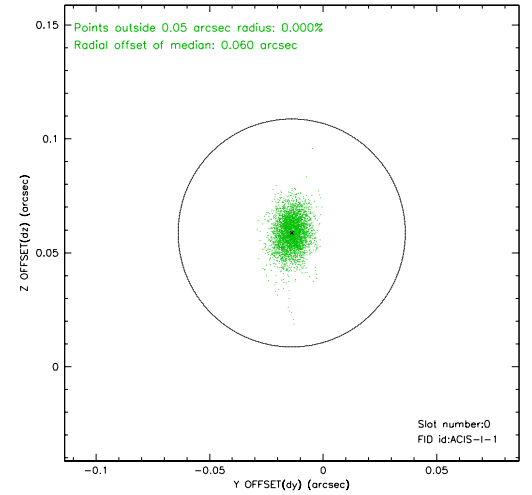
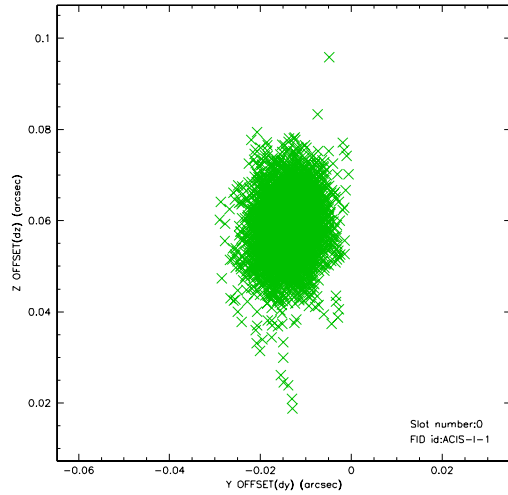


## 2.4.5 Slot 7

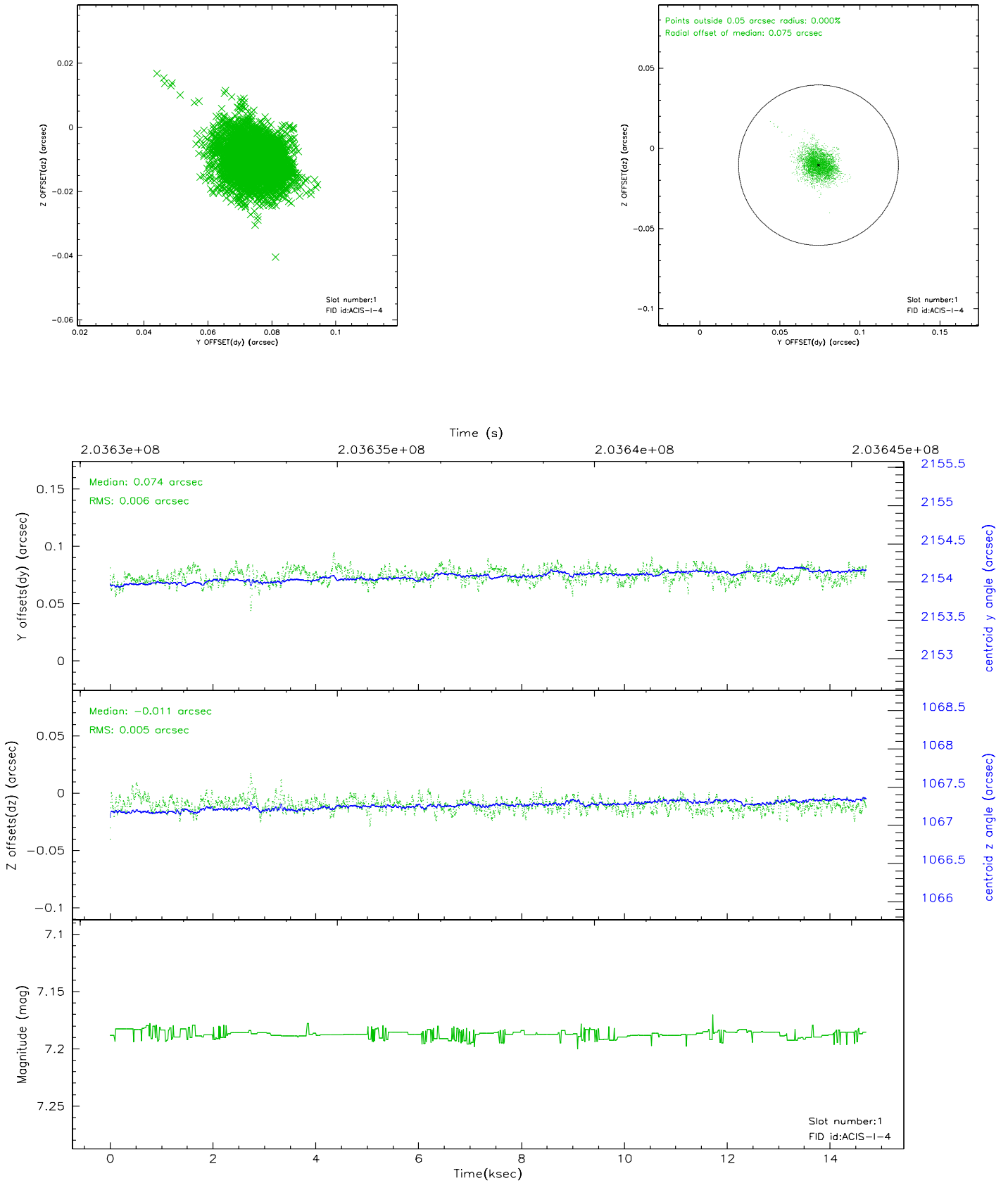


## 2.5 FID Slots

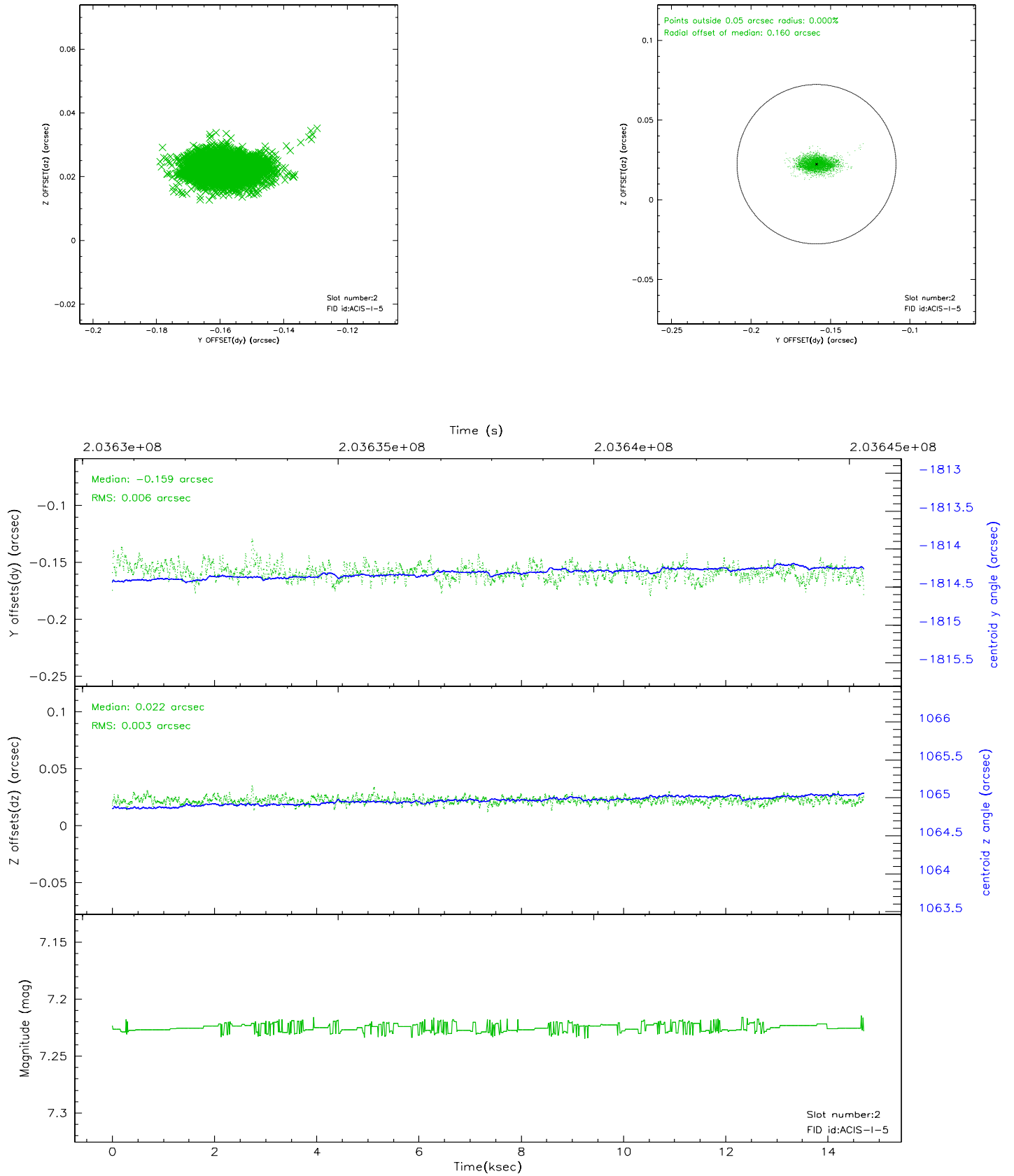
### 2.5.1 Slot 0



## 2.5.2 Slot 1

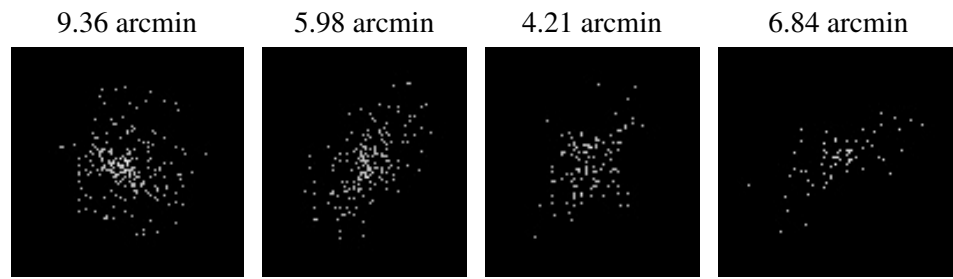


### 2.5.3 Slot 2





### 3 Point Sources



## A Summary

### A.1 Status

V&V Scientist	Beth Sundheim
V&V Date (YYYY-MM-DD)	2006.05.01
V&V Edition	1
V&V Disposition and Status	OK
V&V Charge Time	14.3

### A.2 Comments