

# V&V Reference Report

## L2 ASCDS Version : 7.6.7.2

Observation 4955 - L2 Version 001  
Chandra X-Ray Center

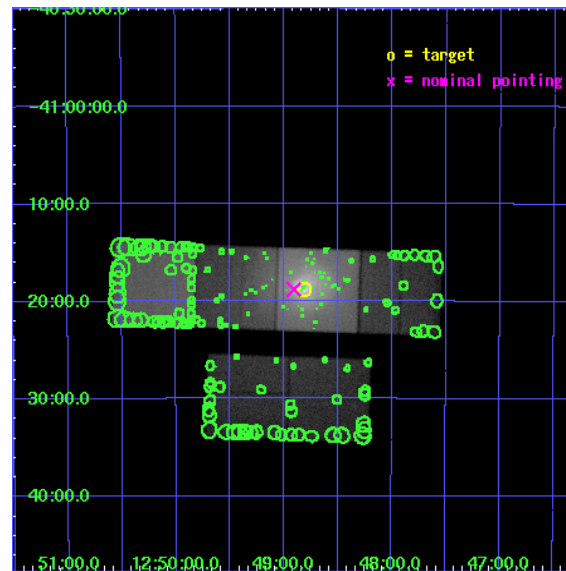
L2 Processing Date : May 27 2006

## Contents

<b>1</b>	<b>Front</b>	<b>2</b>
<b>2</b>	<b>OBI</b>	<b>3</b>
2.1	OBI . . . . .	3
2.1.1	Images . . . . .	3
2.1.2	Bias . . . . .	3
2.1.3	Parameters . . . . .	4
2.1.4	Events . . . . .	4
2.2	Compared Parameters . . . . .	5
2.3	Aspect . . . . .	6
2.4	Star Slots . . . . .	9
2.4.1	Slot 3 . . . . .	9
2.4.2	Slot 4 . . . . .	10
2.4.3	Slot 5 . . . . .	11
2.4.4	Slot 6 . . . . .	12
2.4.5	Slot 7 . . . . .	13
2.5	FID Slots . . . . .	14
2.5.1	Slot 0 . . . . .	14
2.5.2	Slot 1 . . . . .	15
2.5.3	Slot 2 . . . . .	16
<b>3</b>	<b>Point Sources</b>	<b>17</b>
<b>A</b>	<b>Summary</b>	<b>18</b>
A.1	Status . . . . .	18
A.2	Comments . . . . .	18

# 1 Front

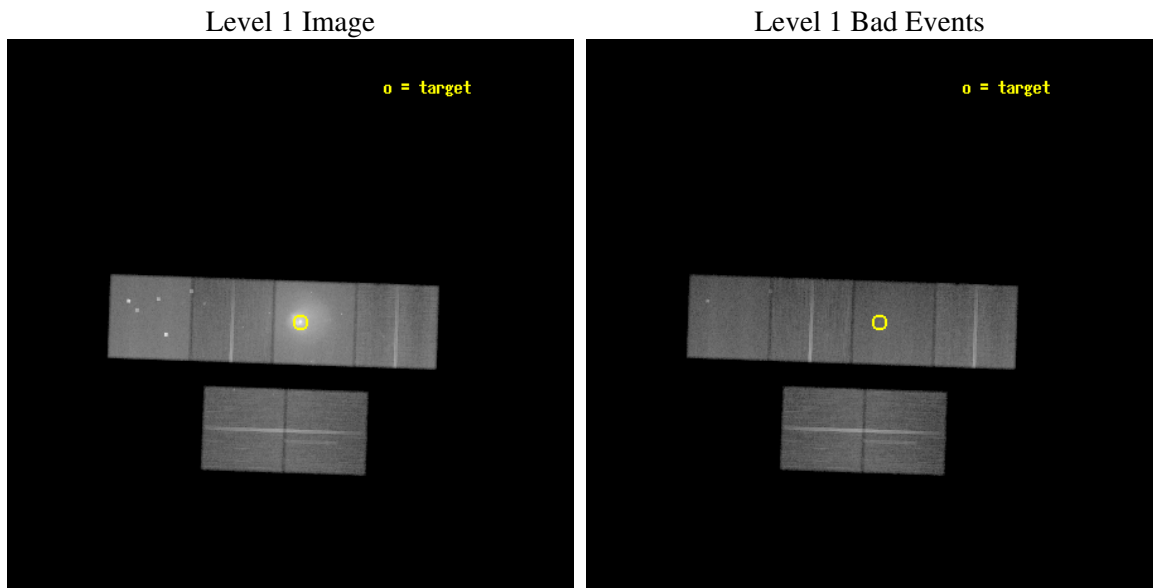
seq_num	800401
obs_id	4955
title	A Detailed Look at the Core of the Centaurus Cluster
observer	Prof Andrew Fabian
object	Centaurus Cluster
dtcycle	0
cycle	P
ra_targ	192.20375
dec_targ	-41.312333
ra_nom	192.22687868276
dec_nom	-41.313454998614
roll_nom	1.9648944394928
revision	2
ontime	45254.399831414
livetime	44681.361371821
ontime2	45251.158841163
ontime3	45251.158841133
ontime5	45254.399831414
ontime6	45254.399831414
ontime7	45254.399831414
ontime8	45251.158841133
l2events	1282042



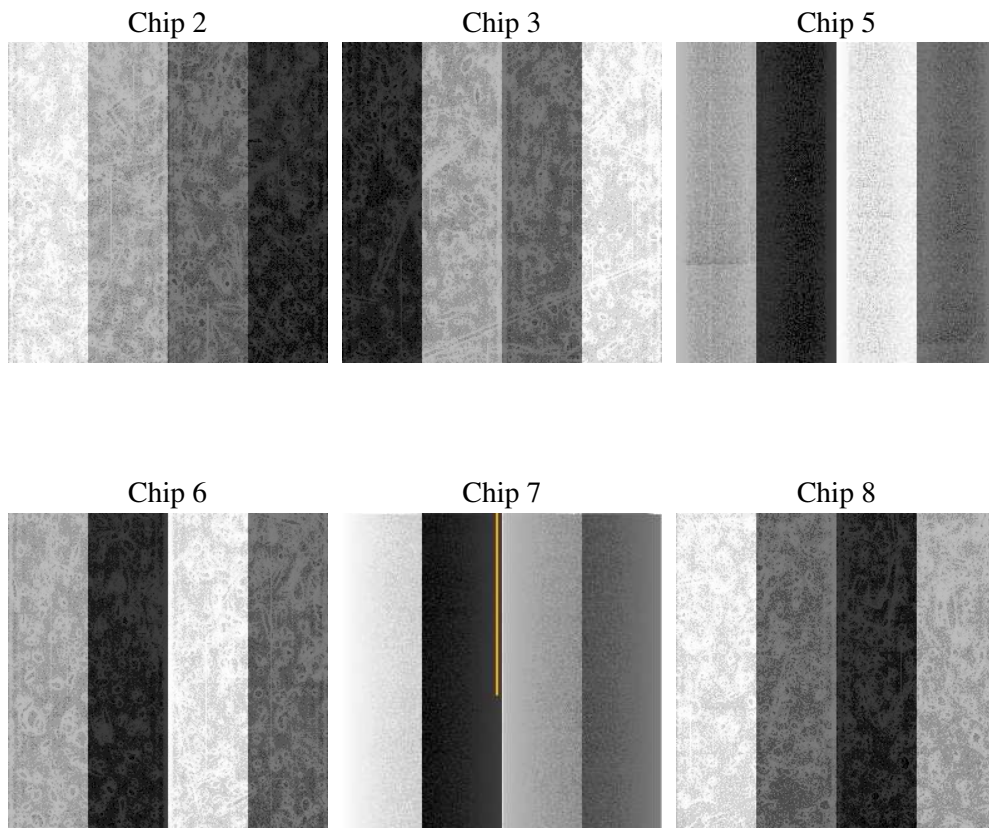
## 2 OBI

### 2.1 OBI

#### 2.1.1 Images



#### 2.1.2 Bias



### 2.1.3 Parameters

obi_num	0
ascdsver	7.6.7.2
caldsver	3.2.2
date	2006-05-27T10:29:18
revision	2

sched_exp_time	45500.000000
ontime	45260.74602887
ontime2	45257.505058527
ontime3	45257.505058497
ontime5	45260.746048778
ontime6	45260.746048778
ontime7	45260.74602887
ontime8	45257.504968941
l1events	3071648

### 2.1.4 Events

	ccd 2	ccd 3	ccd 5	ccd 6	ccd 7	ccd 8
level 1 events	345735	320971	531814	439407	988139	445582
rejected events	280344	261332	264922	280247	270596	317621
rejected %	81%	81%	49%	63%	27%	71%

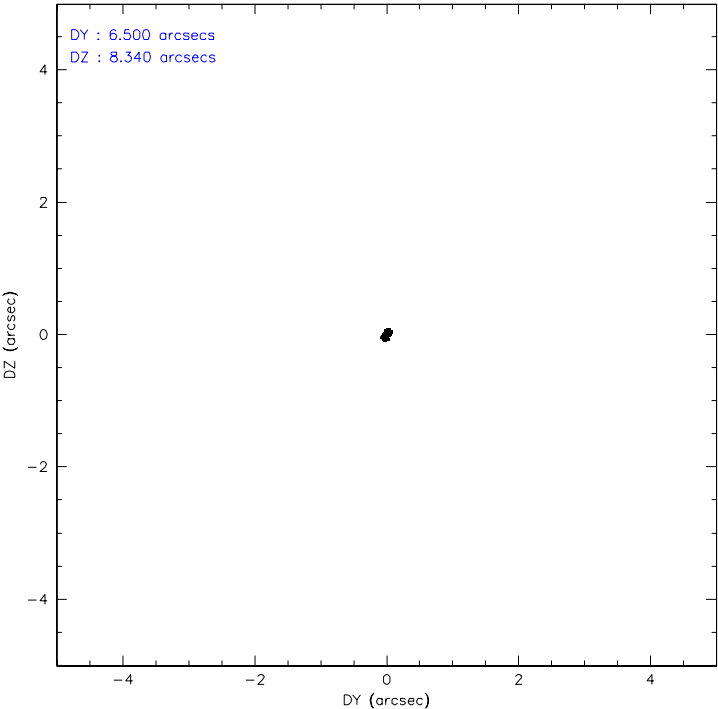
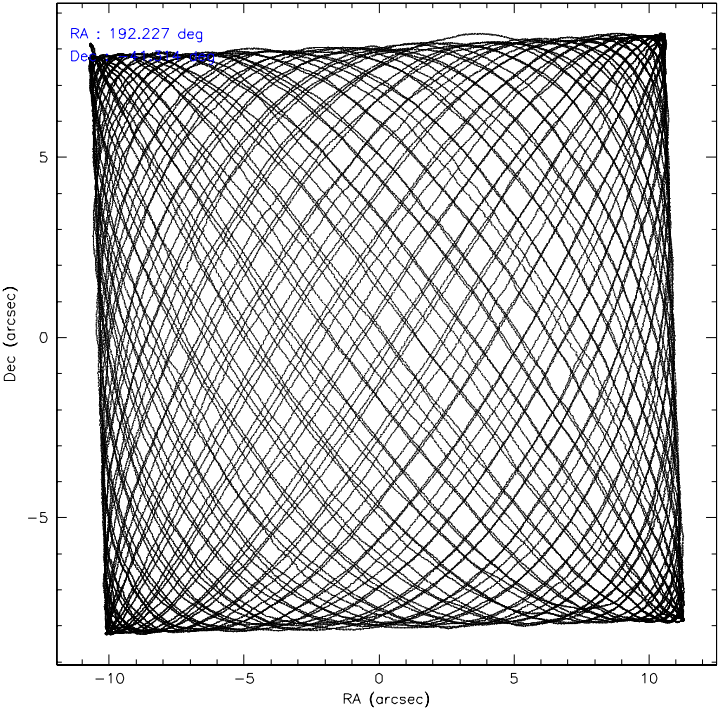
	ccd 2	ccd 3	ccd 5	ccd 6	ccd 7	ccd 8
grade 0 events	39533	35259	43600	114916	160355	63634
	11%	10%	8%	26%	16%	14%
grade 1 events	325	285	1483	507	388	438
	0%	0%	0%	0%	0%	0%
grade 2 events	10234	9085	82429	19535	199795	22713
	2%	2%	15%	4%	20%	5%
grade 3 events	4374	4133	7538	7205	70874	9718
	1%	1%	1%	1%	7%	2%
grade 4 events	4346	4243	7449	7200	69425	9368
	1%	1%	1%	1%	7%	2%
grade 5 events	12375	13622	23121	14840	31447	19179
	3%	4%	4%	3%	3%	4%
grade 6 events	6911	6925	125918	10325	217191	22570
	1%	2%	23%	2%	21%	5%
grade 7 events	267637	247419	240276	264879	238664	297962
	77%	77%	45%	60%	24%	66%

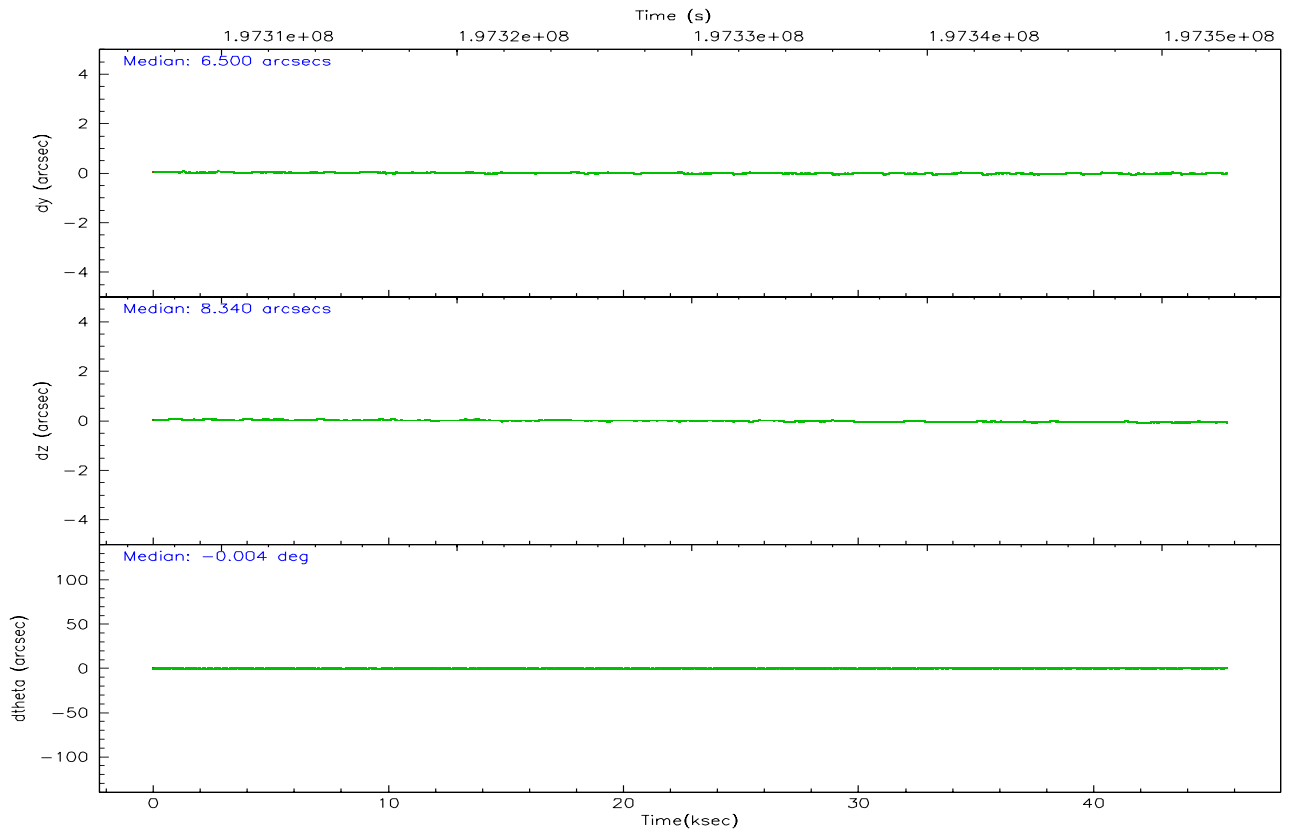
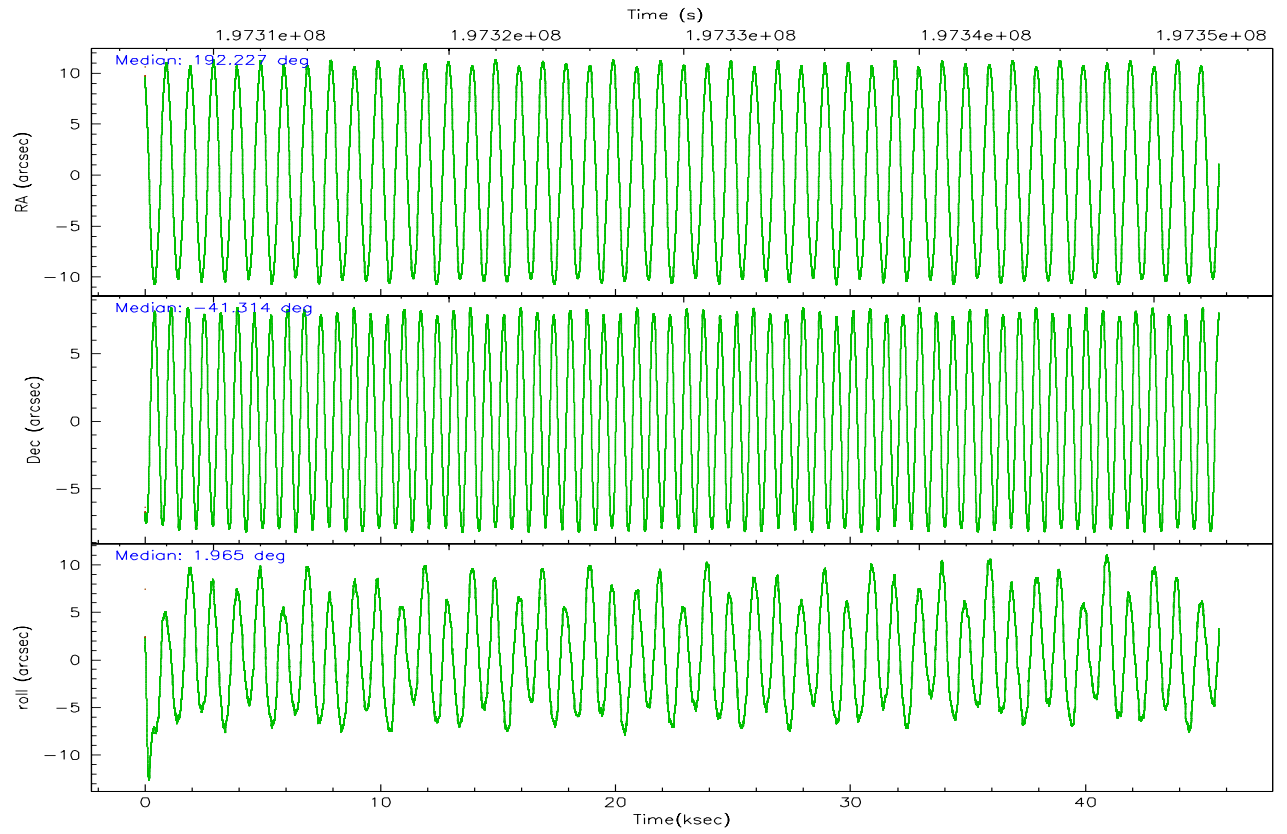


## 2.2 Compared Parameters

Parameter	Planned	Actual	Parameter	Planned	Actual
Instrument	ACIS	ACIS	Obspar format version number	6	6
Detector	ACIS-235678	ACIS-235678	Obspar file type	PREDICTED	ACTUAL
Grating	NONE	NONE	Obspar update status	NONE	UPDATED
Data mode	FAINT	FAINT	On-chip summing requested	N	N
Observation mode	POINTING	POINTING	Subarray requested	NONE	NONE
Pointing RA	192.196412	192.2268786827642	Alternating exposures requested	N	N
Pointing Dec	-41.328184	-41.31345499861391	Primary exposure time	0.000000	3.2
Pointing Roll	1.788149	1.9648944394928			
SIM focus pos (mm)	-0.684267	-0.6828225247311905			
SIM defocus (mm)	0	0.001444936568705701			
SIM translation stage pos (mm)	-190.132523	-190.1400660498719			
SIM translation stage offset (mm)	0	0.00754346686406393			
Observation start time	197307269.184000	197306893.57312			
Observation start date	2004-04-02T15:33:25	2004-04-02T15:28:13			
Observation end time	197352769.184000	197354253.7002			
Observation end date	2004-04-03T04:11:45	2004-04-03T04:37:33			
Read mode	TIMED	TIMED			

2.3 Aspect



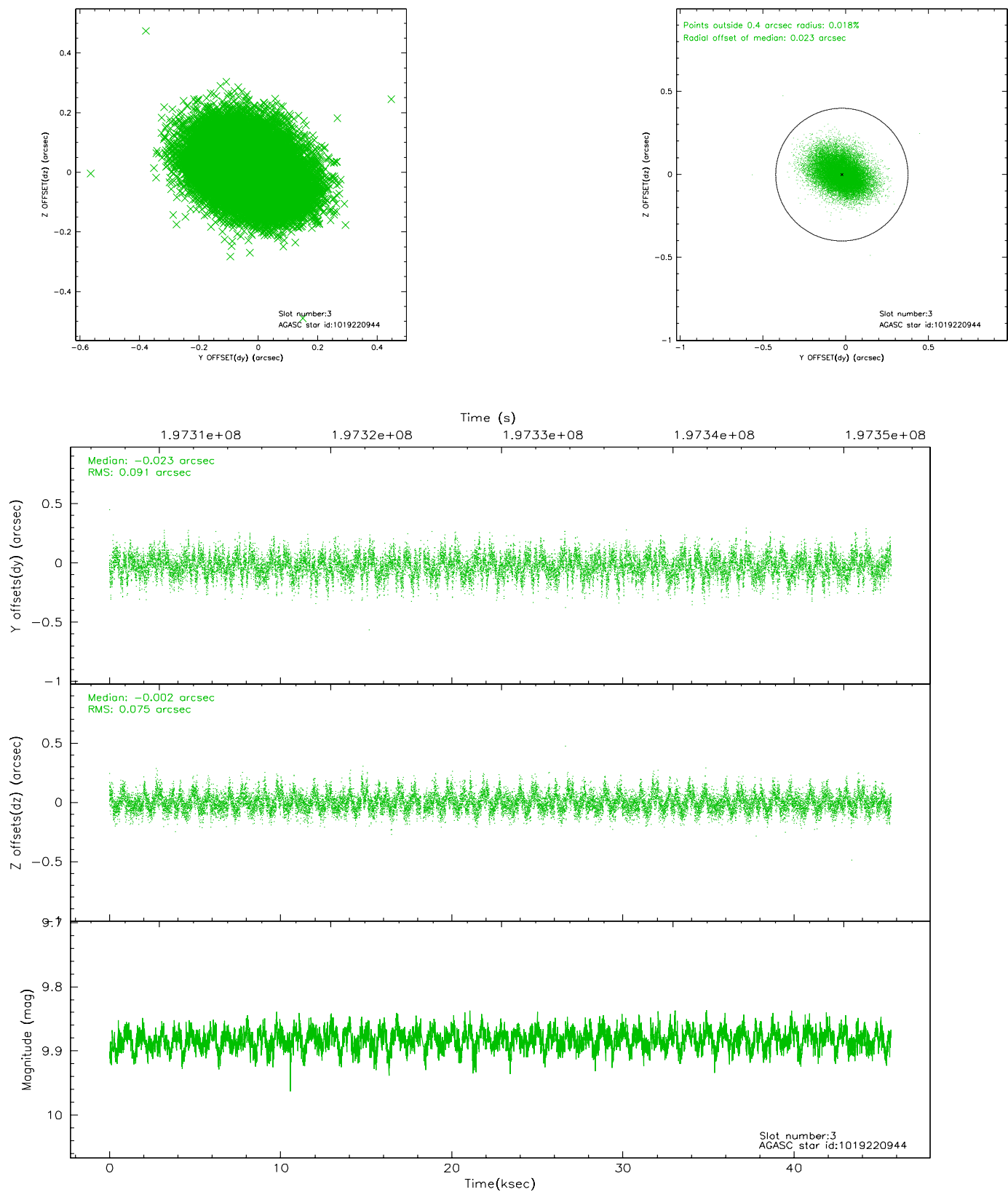


### Slot Statistics

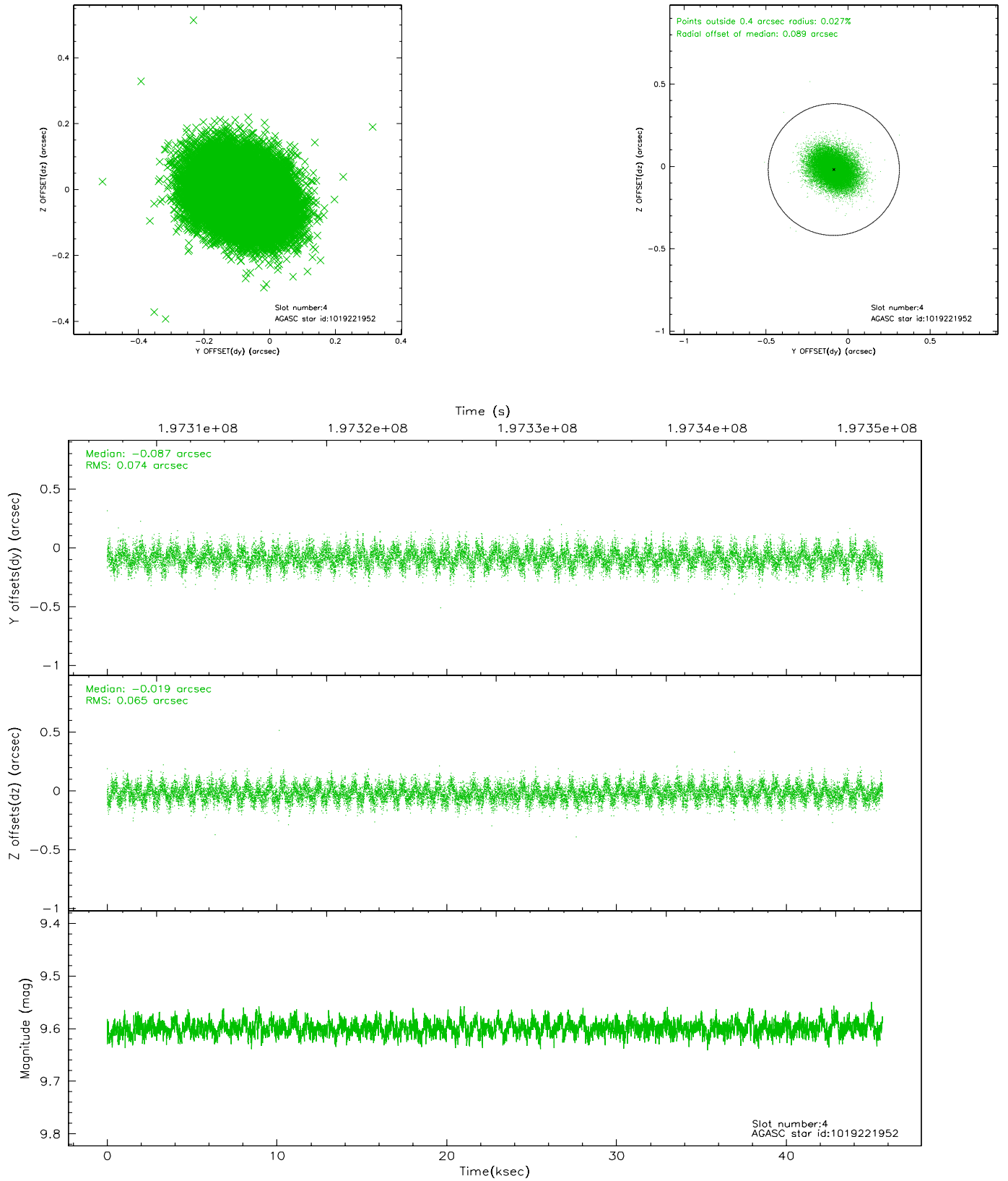
slot	status	id	mag	n_pts	med_dy	med_dz	dr1	dr2	ra	dec	mean_y	mean_z
0	FID	ACIS-S-2	7.10	11144	-0.019	-0.025	0.006	0.010	0.000000	0.000000	-759.27	-1729.56
1	FID	ACIS-S-4	7.21	11144	0.028	0.016	0.005	0.009	0.000000	0.000000	2154.07	178.96
2	FID	ACIS-S-5	7.23	11143	-0.040	0.018	0.006	0.010	0.000000	0.000000	-1812.12	172.65
3	GUIDE	1019220944	9.88	22189	-0.023	-0.002	0.125	0.207	192.806424	-41.071482	1683.74	866.27
4	GUIDE	1019221952	9.60	22269	-0.087	-0.019	0.105	0.169	192.906873	-41.032646	1961.75	995.52
5	GUIDE	1019615024	8.48	22280	0.040	0.017	0.062	0.100	191.349086	-41.365736	-2292.18	-74.69
6	GUIDE	1019740808	8.81	22272	0.064	-0.114	0.061	0.099	192.766173	-41.251253	1550.11	223.64
7	GUIDE	1019743536	8.65	22280	0.013	0.118	0.067	0.108	192.632057	-41.696442	1129.54	-1364.42

## 2.4 Star Slots

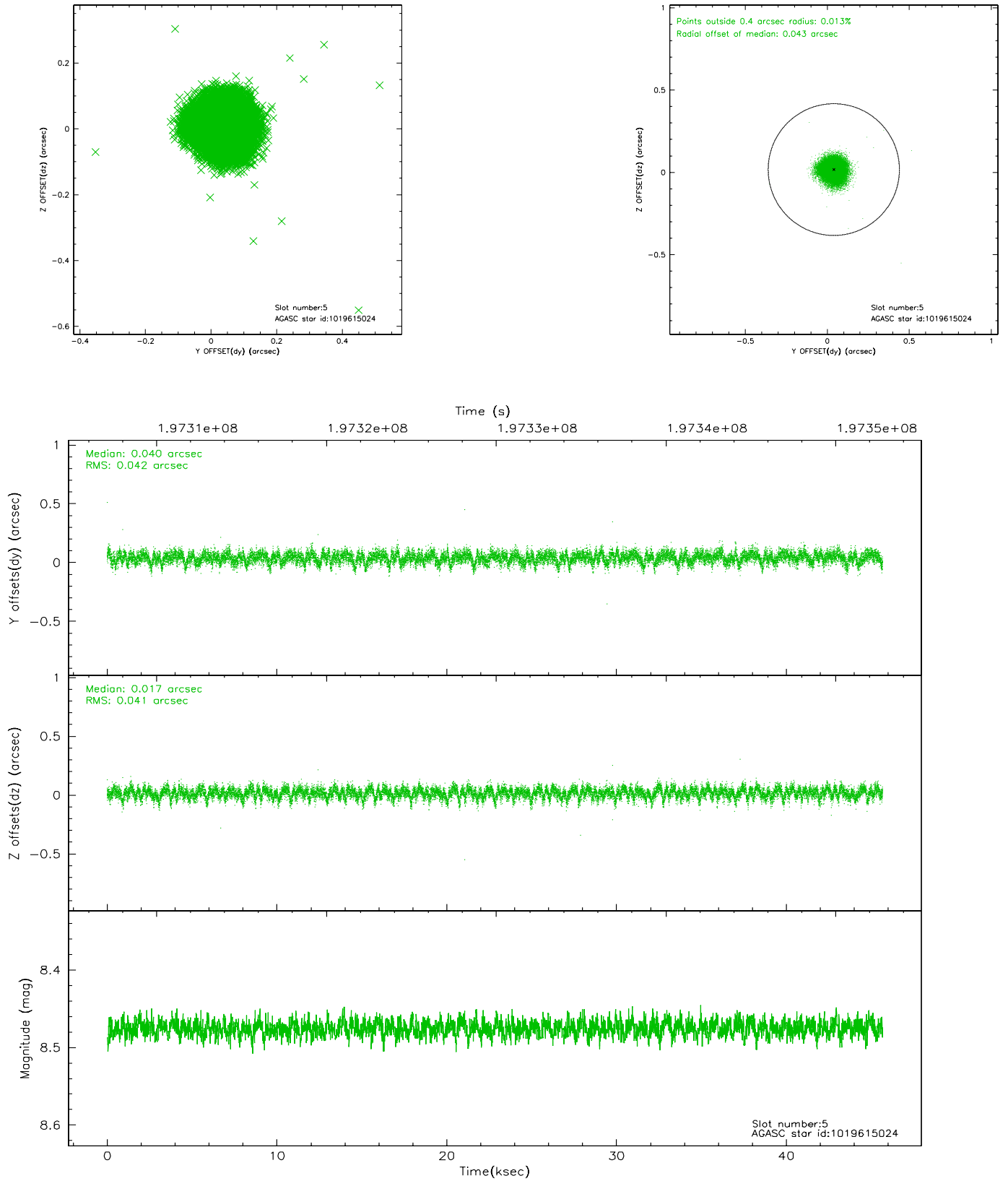
### 2.4.1 Slot 3



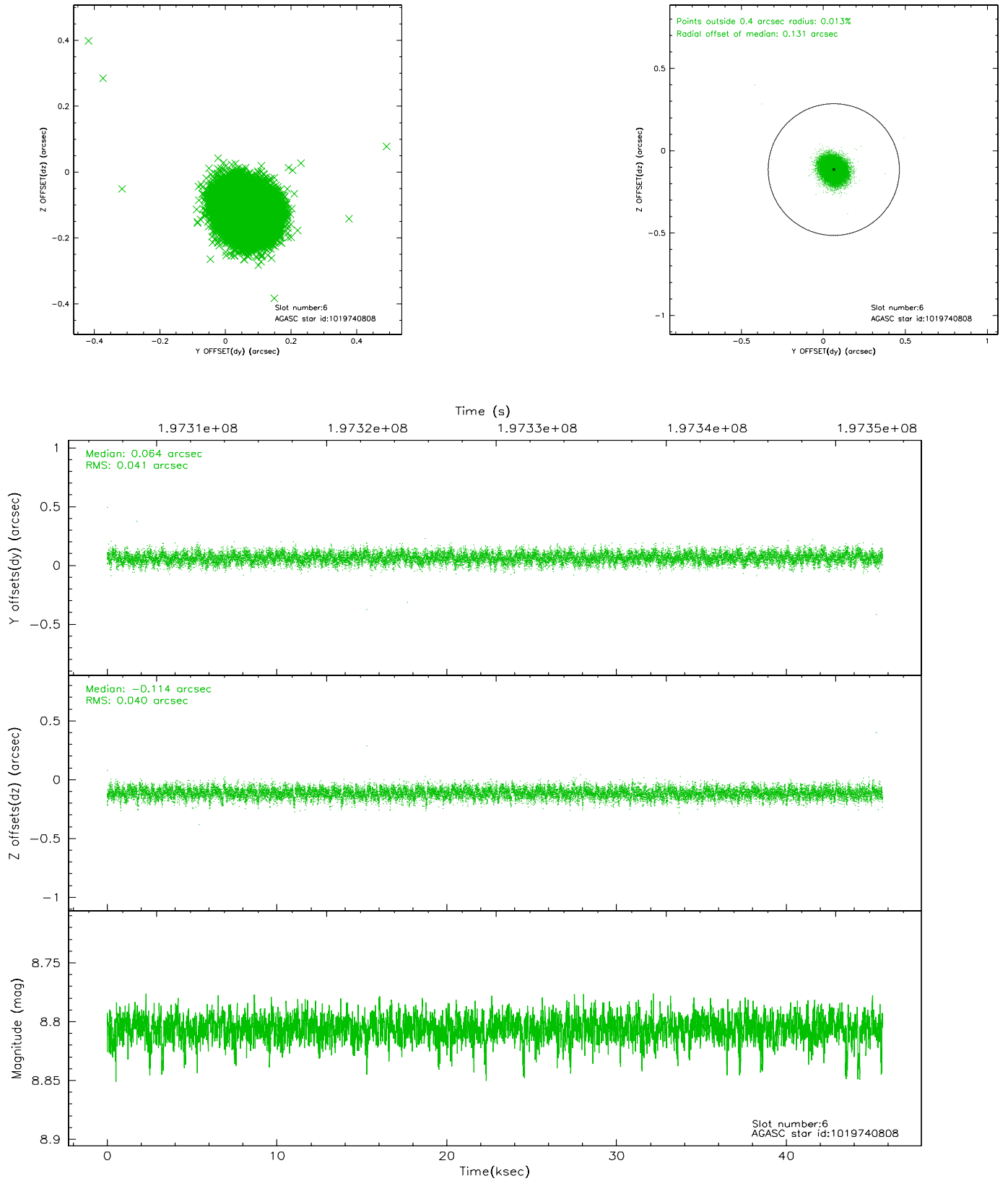
## 2.4.2 Slot 4



### 2.4.3 Slot 5

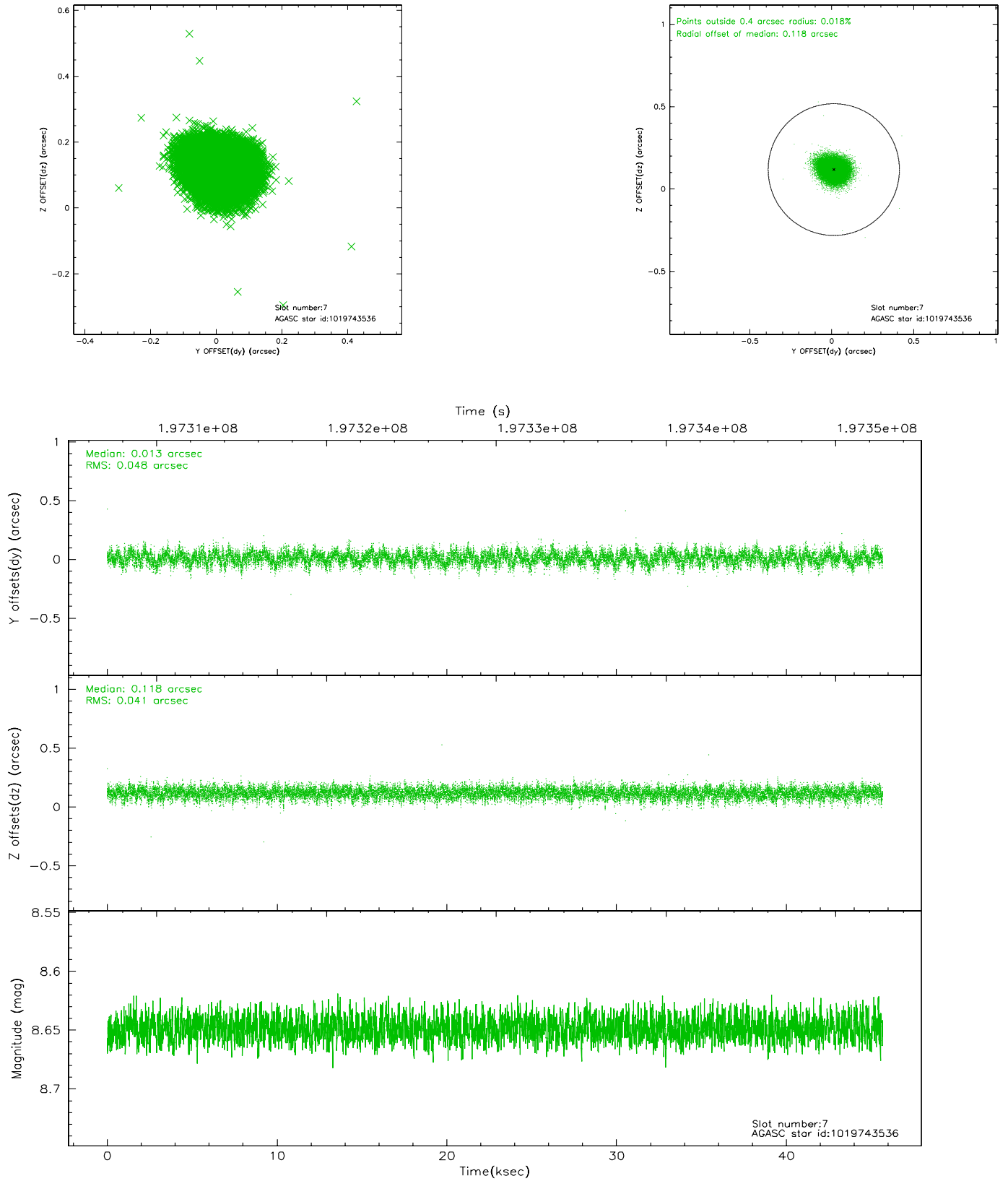


## 2.4.4 Slot 6



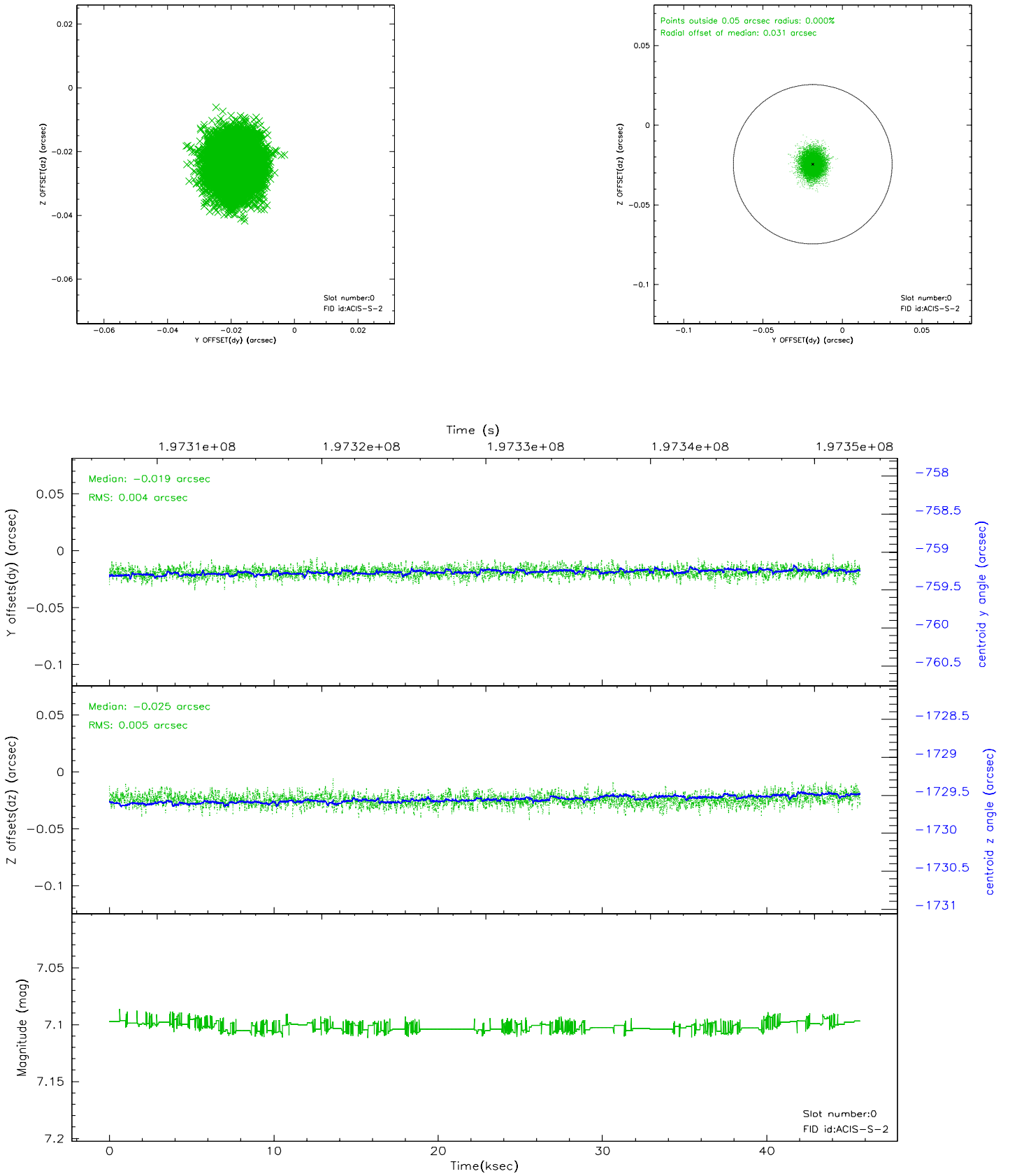


## 2.4.5 Slot 7

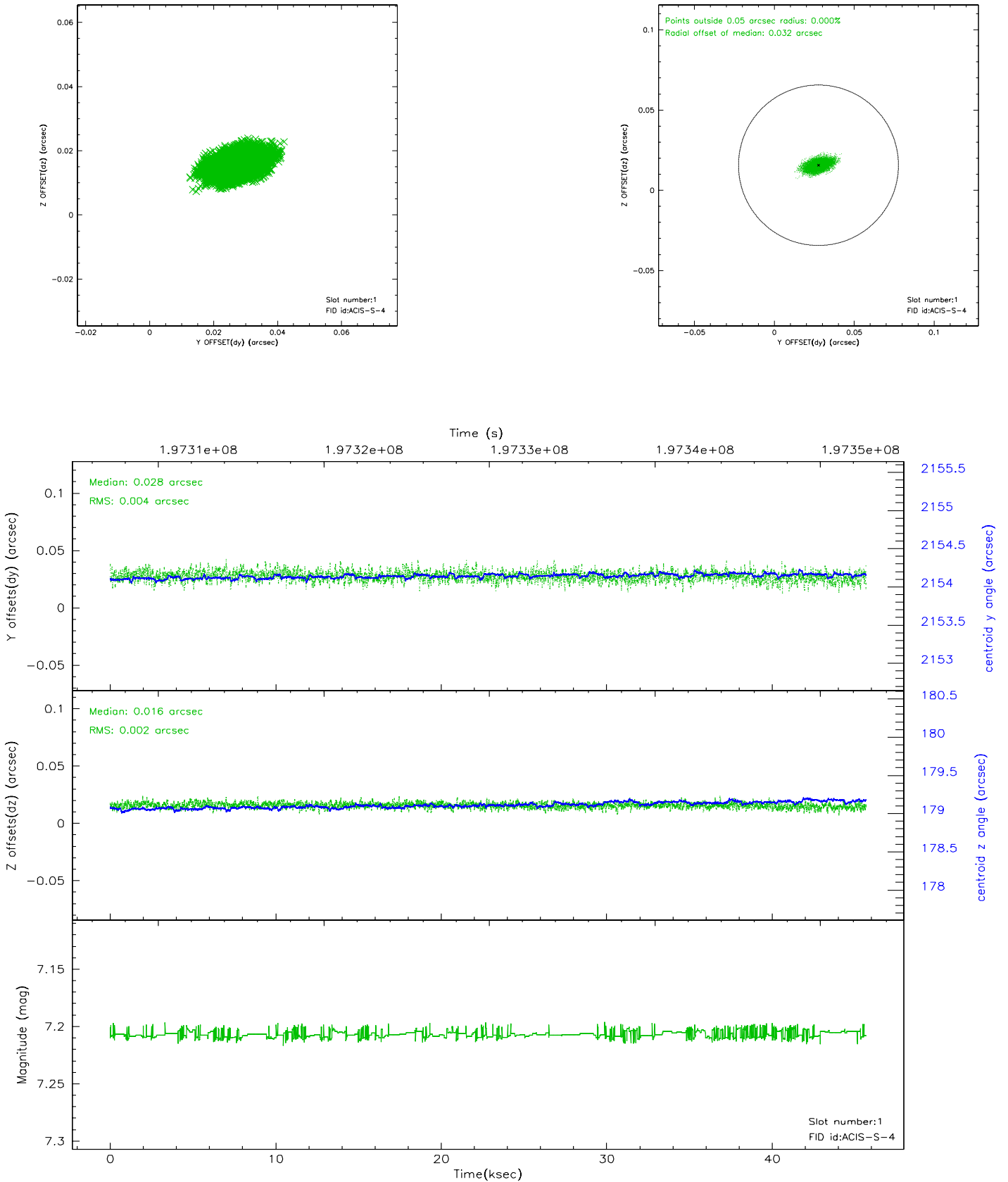


## 2.5 FID Slots

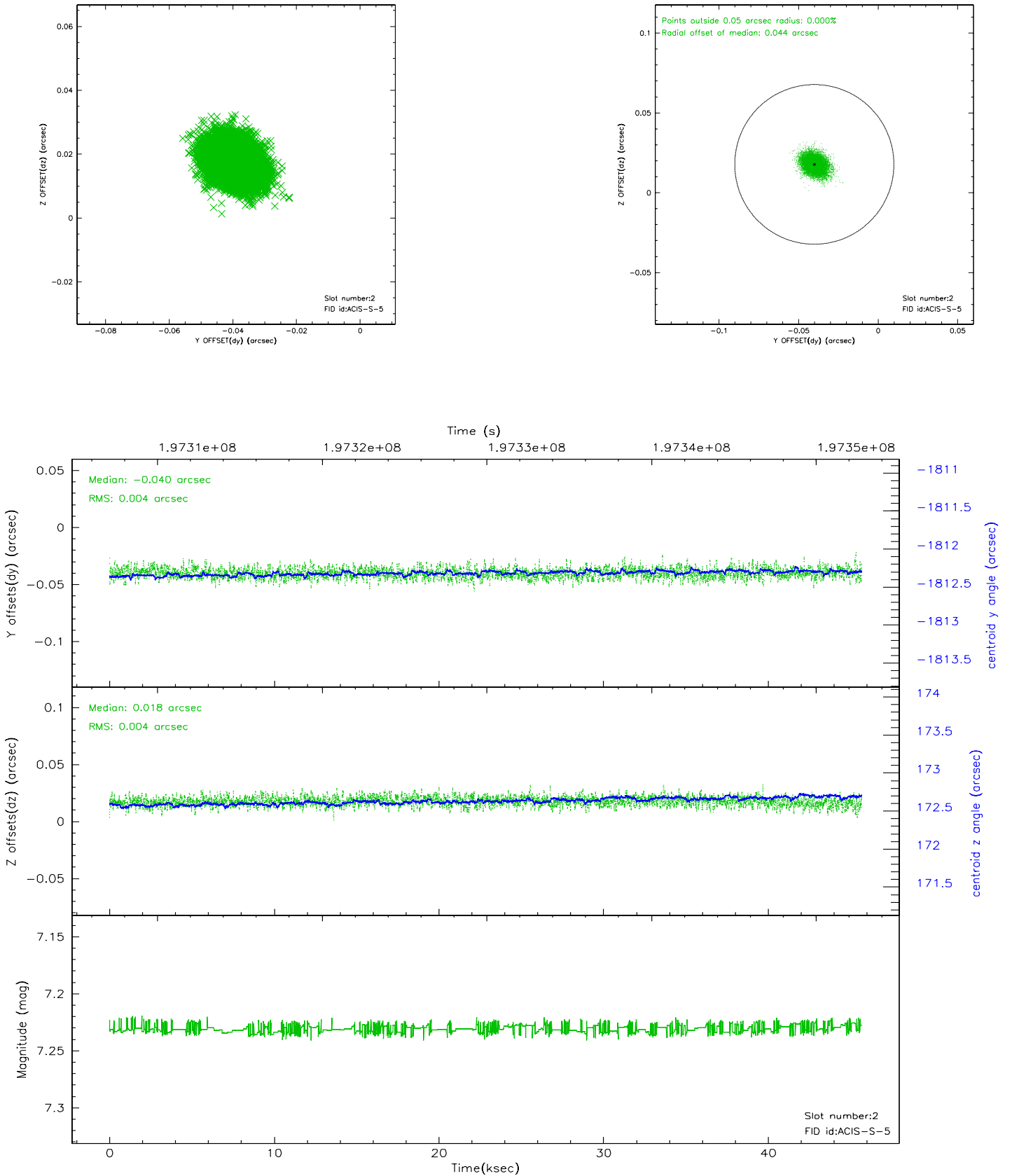
### 2.5.1 Slot 0



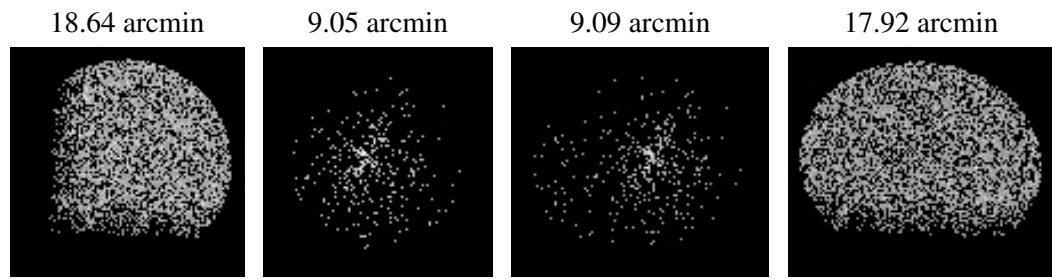
## 2.5.2 Slot 1



### 2.5.3 Slot 2



### 3 Point Sources



## A Summary

### A.1 Status

V&V Scientist	Jen Lauer
V&V Date (YYYY-MM-DD)	2006.05.30
V&V Edition	1
V&V Disposition and Status	OK
V&V Charge Time	45.257

### A.2 Comments