

# V&V Reference Report

## L2 ASCDS Version : 7.6.7.2

Observation 4945 - L2 Version 001  
Chandra X-Ray Center

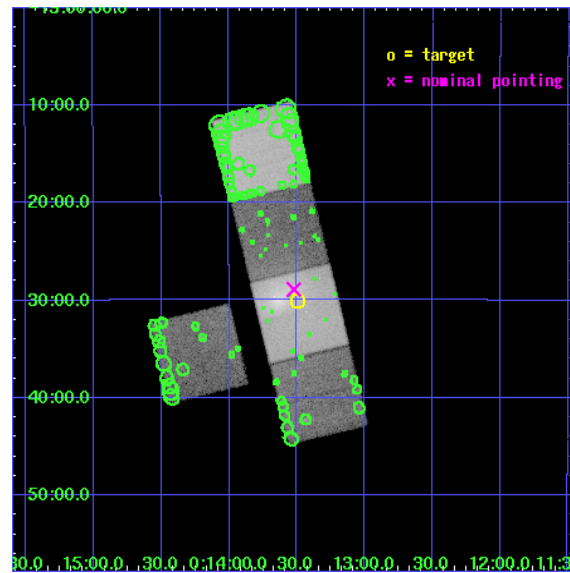
L2 Processing Date : Apr 25 2006

## Contents

<b>1</b>	<b>Front</b>	<b>2</b>
<b>2</b>	<b>OBI</b>	<b>3</b>
2.1	OBI . . . . .	3
2.1.1	Images . . . . .	3
2.1.2	Bias . . . . .	3
2.1.3	Parameters . . . . .	4
2.1.4	Events . . . . .	4
2.2	Compared Parameters . . . . .	5
2.3	Aspect . . . . .	6
2.4	Star Slots . . . . .	9
2.4.1	Slot 3 . . . . .	9
2.4.2	Slot 4 . . . . .	10
2.4.3	Slot 5 . . . . .	11
2.4.4	Slot 6 . . . . .	12
2.4.5	Slot 7 . . . . .	13
2.5	FID Slots . . . . .	14
2.5.1	Slot 0 . . . . .	14
2.5.2	Slot 1 . . . . .	15
2.5.3	Slot 2 . . . . .	16
<b>3</b>	<b>Point Sources</b>	<b>17</b>
<b>A</b>	<b>Summary</b>	<b>18</b>
A.1	Status . . . . .	18
A.2	Comments . . . . .	18

# 1 Front

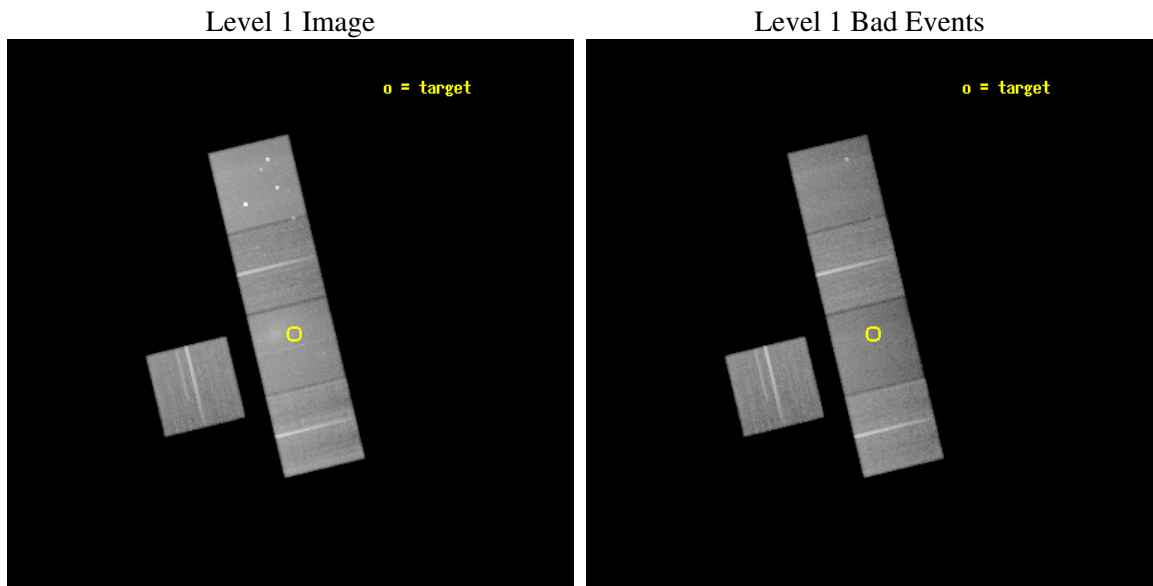
seq_num	800396
obs_id	4945
title	Filamentary Radio Relics in Clusters of Galaxies: Radio Bubbles or Merger Shocks?
observer	Dr. Craig Sarazin
object	Abell 13
dtcycle	0
cycle	P
ra_targ	3.37375
dec_targ	-19.501528
ra_nom	3.3806647511392
dec_nom	-19.48182668453
roll_nom	76.44739470142
revision	3
ontime	56038.699892253
livetime	55306.51302307
ontime3	56013.572000355
ontime5	56038.699892253
ontime6	56013.572080106
ontime7	56038.699892253
ontime8	56032.418001413
l2events	522983



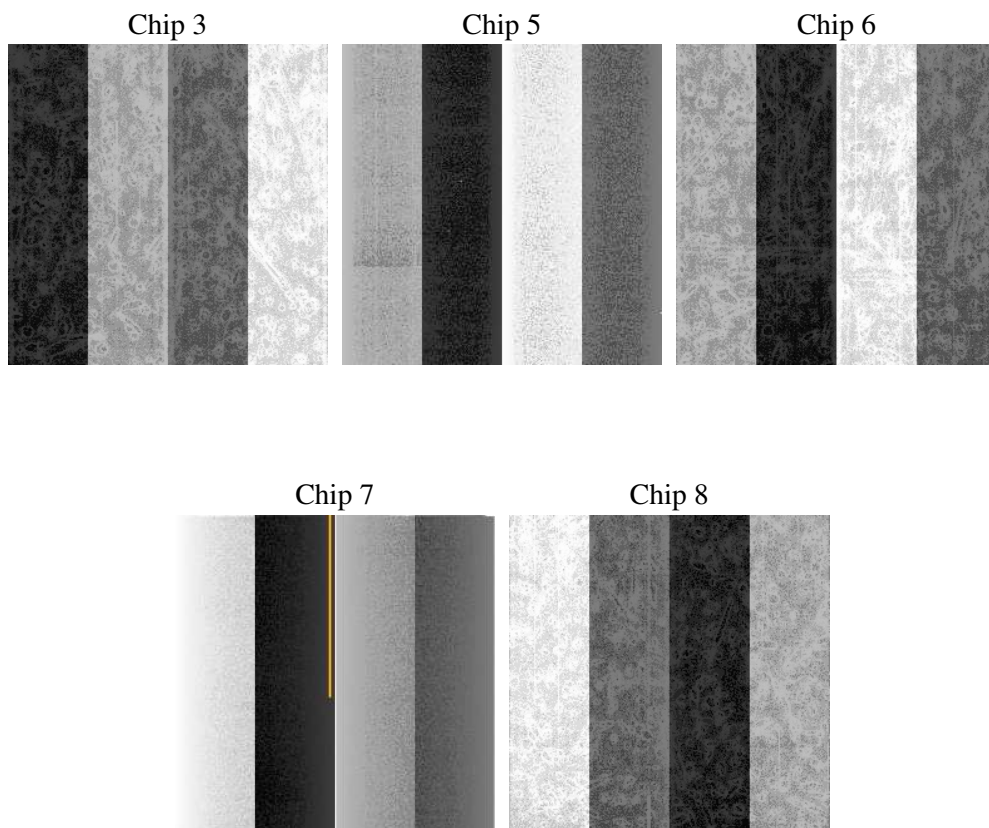
## 2 OBI

### 2.1 OBI

#### 2.1.1 Images



#### 2.1.2 Bias



### 2.1.3 Parameters

obi_num	0
ascdsver	7.6.7.2
caldsver	3.2.1
date	2006-04-25T06:23:21
revision	3

sched_exp_time	56000.000000
ontime	56041.931456774
ontime3	56016.803564876
ontime5	56041.931456774
ontime6	56016.803644627
ontime7	56041.931456774
ontime8	56035.649565935
l1events	2115530

### 2.1.4 Events

	ccd 3	ccd 5	ccd 6	ccd 7	ccd 8
level 1 events	352458	494146	374805	443418	450703
rejected events	318235	254180	333858	232074	349478
rejected %	90%	51%	89%	52%	77%

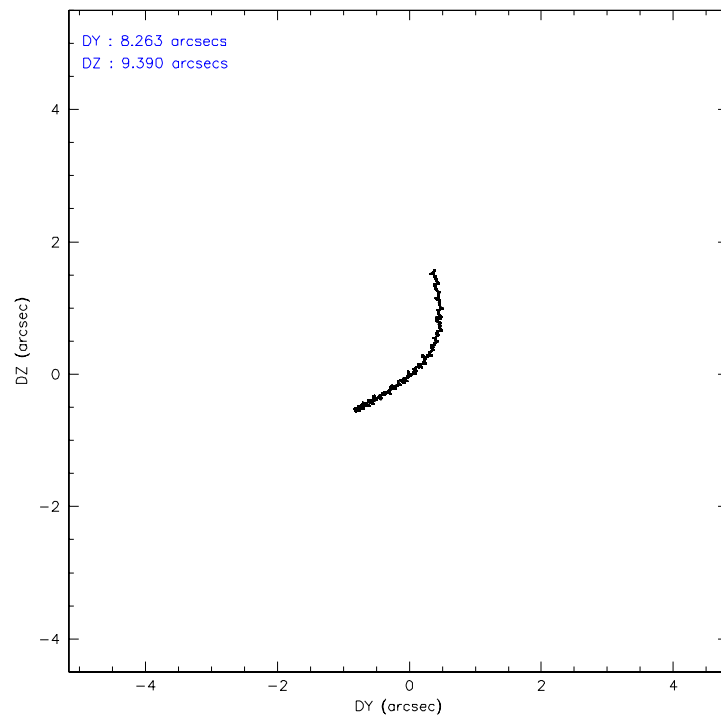
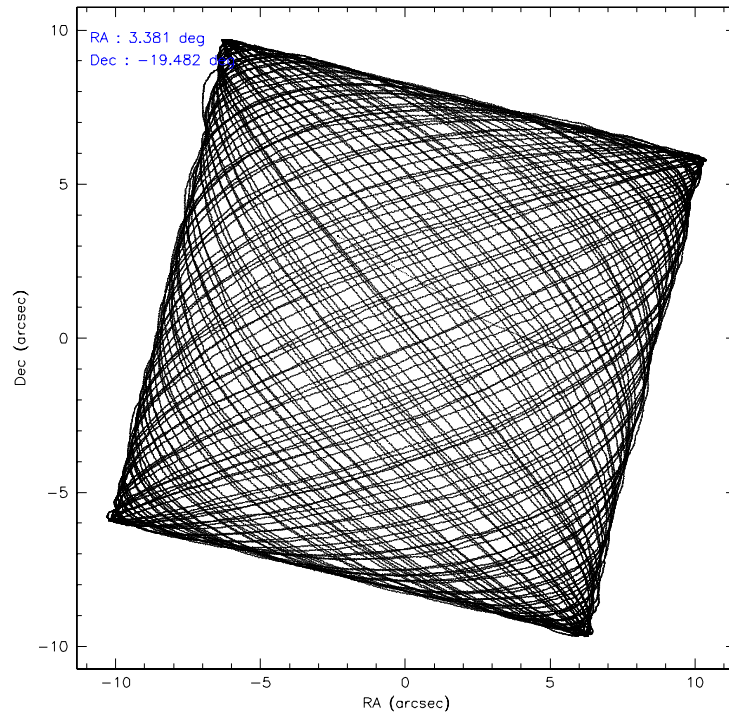
	ccd 3	ccd 5	ccd 6	ccd 7	ccd 8
grade 0 events	13028	28452	16505	22450	31332
	3%	5%	4%	5%	6%
grade 1 events	176	307	174	204	353
	0%	0%	0%	0%	0%
grade 2 events	6978	71618	8385	53934	22002
	1%	14%	2%	12%	4%
grade 3 events	3857	5873	4132	14548	10863
	1%	1%	1%	3%	2%
grade 4 events	3844	5390	4126	13964	10328
	1%	1%	1%	3%	2%
grade 5 events	13664	26136	14220	29654	19853
	3%	5%	3%	6%	4%
grade 6 events	6517	128646	7804	106460	26709
	1%	26%	2%	24%	5%
grade 7 events	304394	227724	319459	202204	329263
	86%	46%	85%	45%	73%

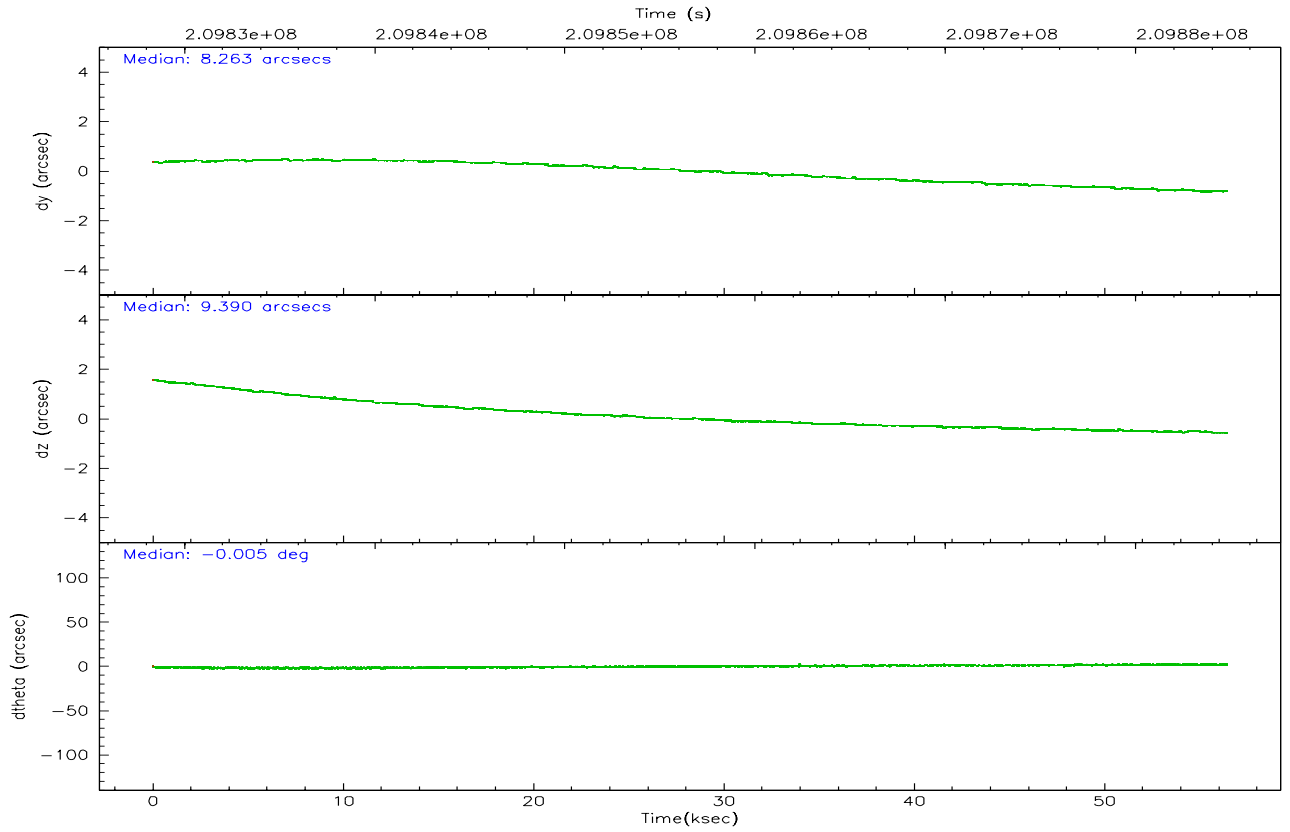
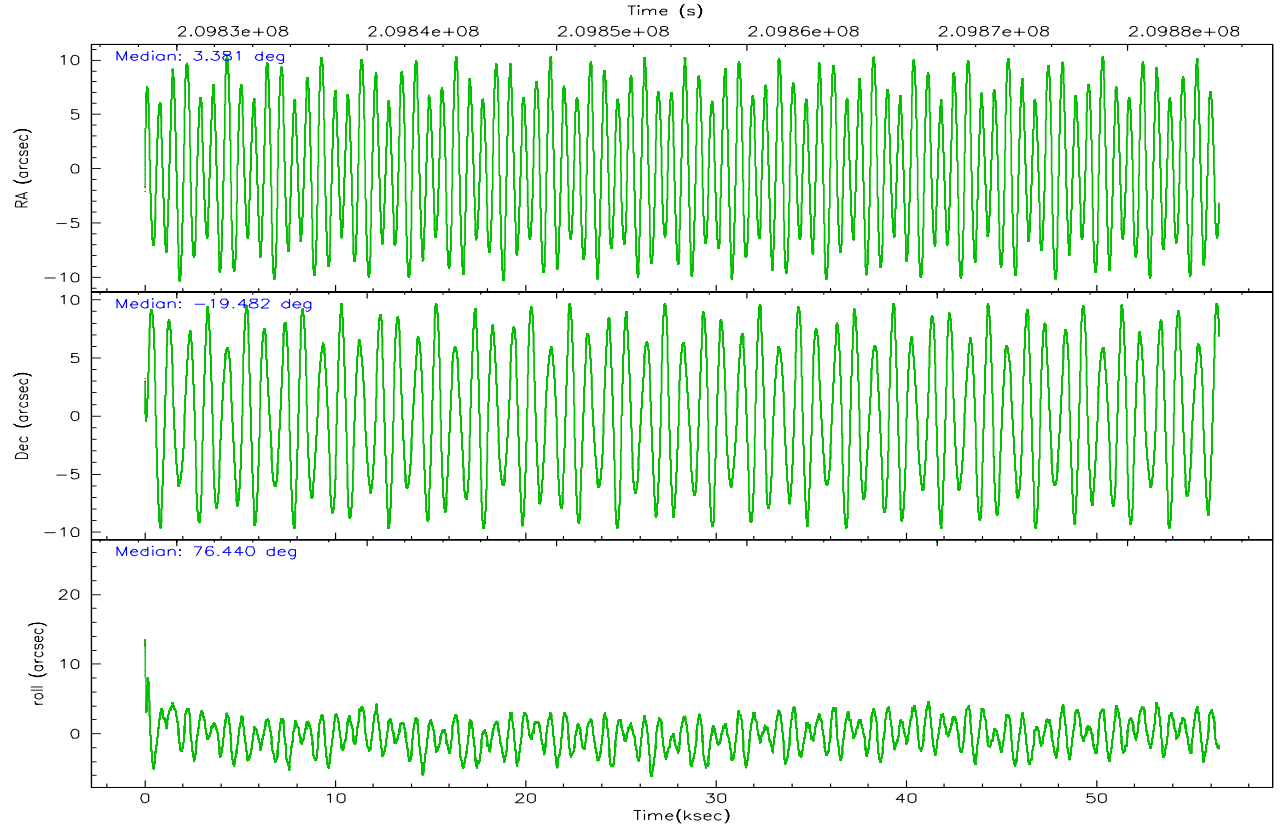


## 2.2 Compared Parameters

Parameter	Planned	Actual	Parameter	Planned	Actual
Instrument	ACIS	ACIS	Obspar format version number	6	6
Detector	ACIS-35678	ACIS-35678	Obspar file type	PREDICTED	ACTUAL
Grating	NONE	NONE	Obspar update status	NONE	UPDATED
Data mode	VFAINT	VFAINT	On-chip summing requested	N	N
Observation mode	POINTING	POINTING	Subarray requested	NONE	NONE
Pointing RA	3.389227	3.3806647511392	Alternating exposures requested	N	N
Pointing Dec	-19.507823	-19.48182668452975	Primary exposure time	0.000000	3.1
Pointing Roll	76.293617	76.44739470142017			
SIM focus pos (mm)	-0.684267	-0.6828225247311905			
SIM defocus (mm)	0	0.001444936568705701			
SIM translation stage pos (mm)	-190.132523	-190.1425803651734			
SIM translation stage offset (mm)	0	0.01005778216563158			
Observation start time	209828796.184000	209827741.65227			
Observation start date	2004-08-25T13:45:32	2004-08-25T13:29:01			
Observation end time	209884796.184000	209885653.12985			
Observation end date	2004-08-26T05:18:52	2004-08-26T05:34:13			
Read mode	TIMED	TIMED			

## 2.3 Aspect



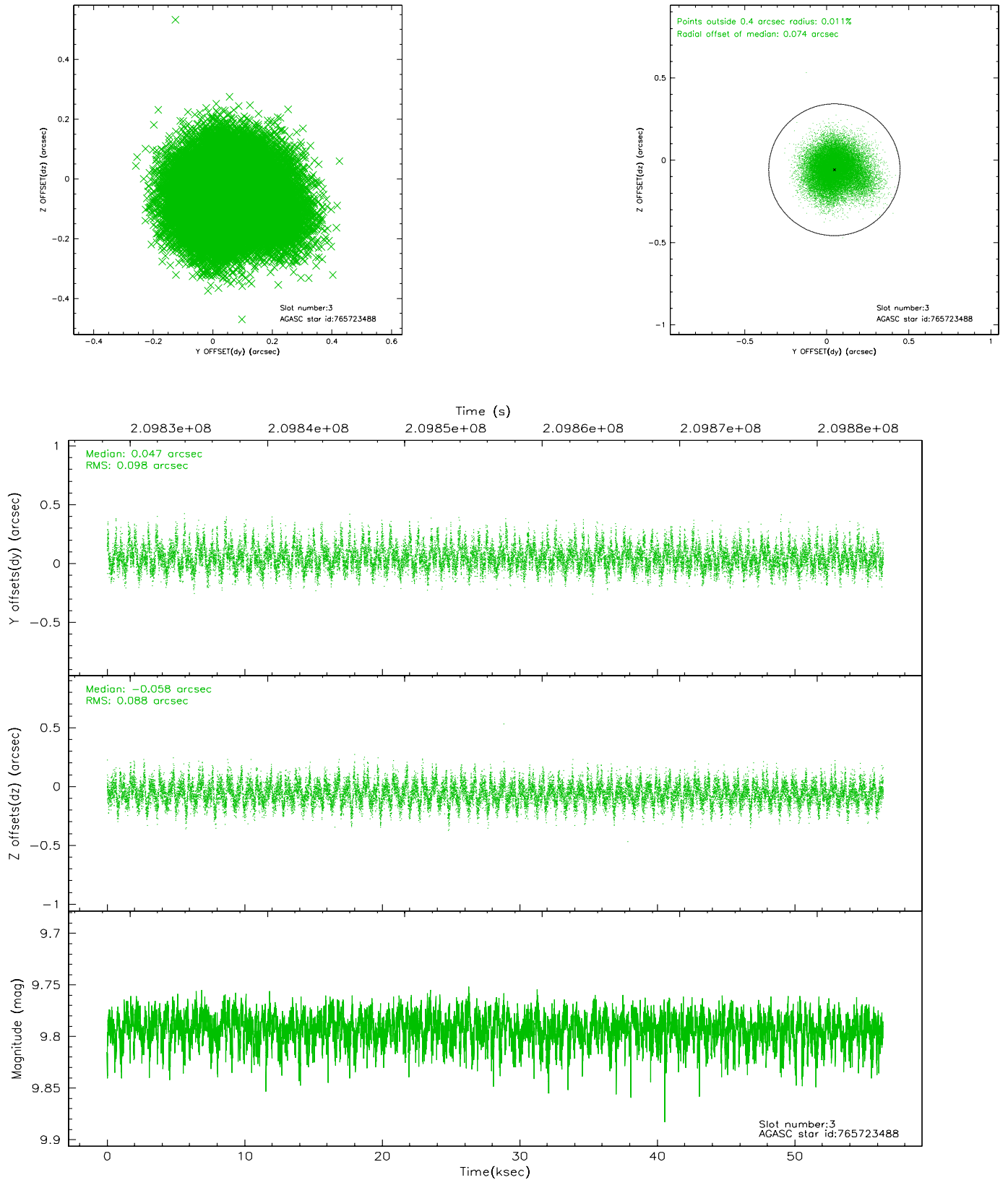


### Slot Statistics

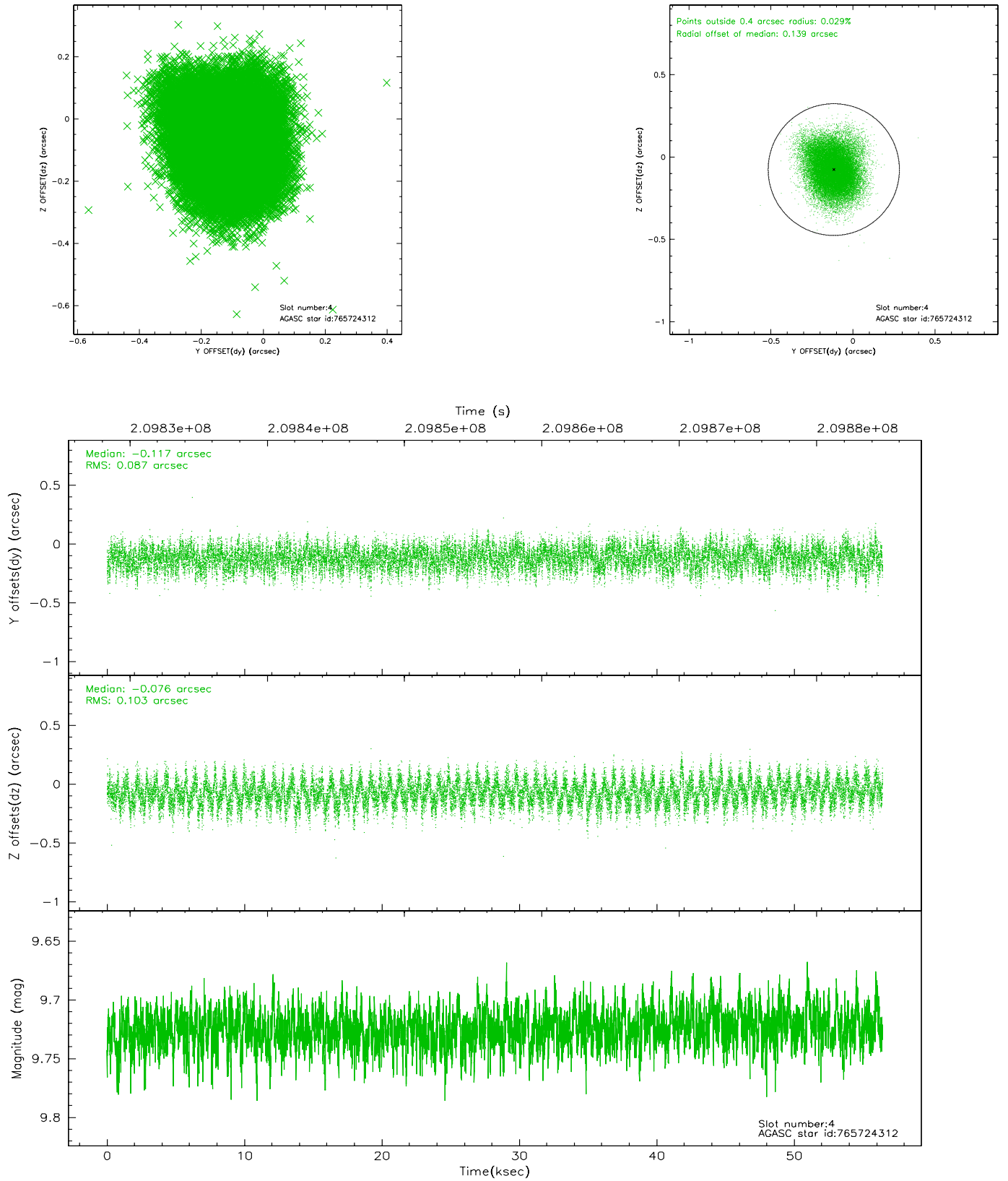
slot	status	id	mag	n_pts	med_dy	med_dz	dr1	dr2	ra	dec	mean_y	mean_z
0	FID	ACIS-S-2	7.11	13764	-0.017	-0.009	0.016	0.027	0.000000	0.000000	-760.99	-1730.75
1	FID	ACIS-S-4	7.20	13766	0.060	0.011	0.015	0.023	0.000000	0.000000	2152.36	177.83
2	FID	ACIS-S-5	7.23	13765	-0.074	0.008	0.017	0.023	0.000000	0.000000	-1813.96	171.40
3	GUIDE	765723488	9.79	27504	0.047	-0.058	0.141	0.227	2.962358	-19.703296	-1028.06	1237.40
4	GUIDE	765724312	9.72	27510	-0.117	-0.076	0.144	0.230	2.827474	-19.152847	785.48	2157.93
5	GUIDE	765724904	9.04	27508	-0.083	0.054	0.090	0.145	3.162307	-19.198136	899.49	1013.77
6	GUIDE	765730008	8.86	27521	0.032	0.217	0.085	0.137	4.092683	-19.399609	939.57	-2229.22
7	GUIDE	765724576	8.66	27516	0.116	-0.138	0.067	0.108	2.872210	-18.706898	2381.04	2395.54

## 2.4 Star Slots

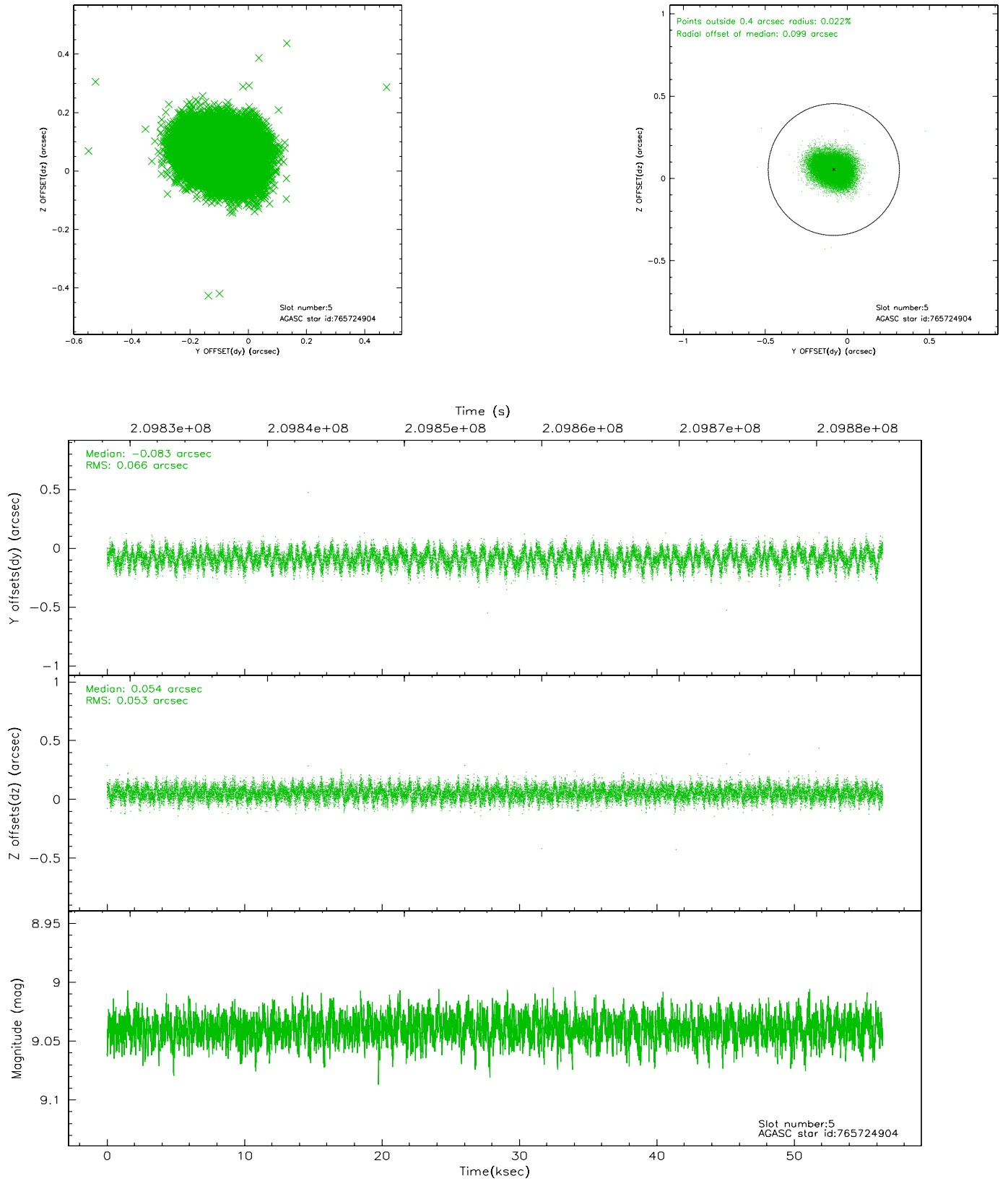
### 2.4.1 Slot 3



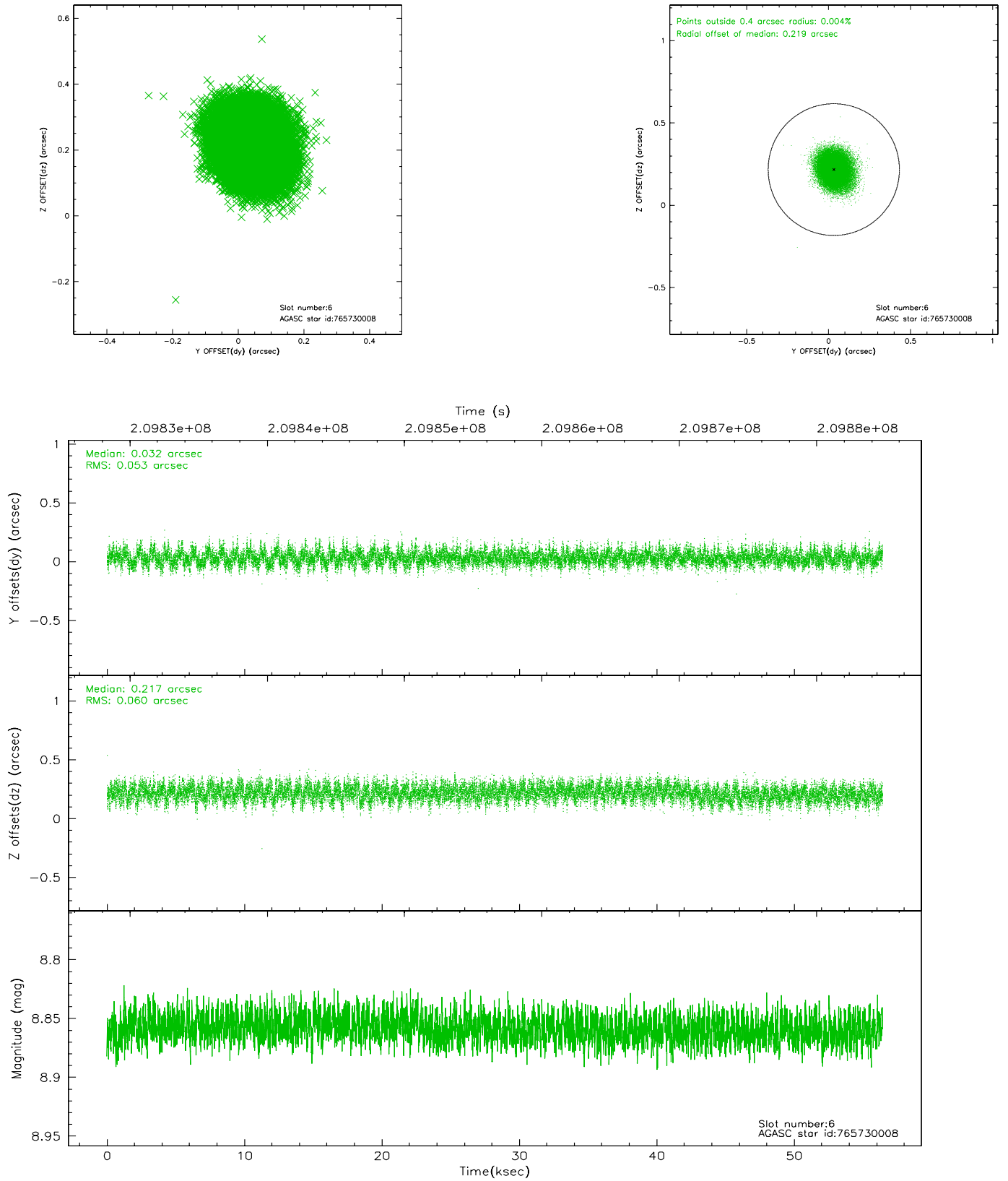
## 2.4.2 Slot 4



### 2.4.3 Slot 5

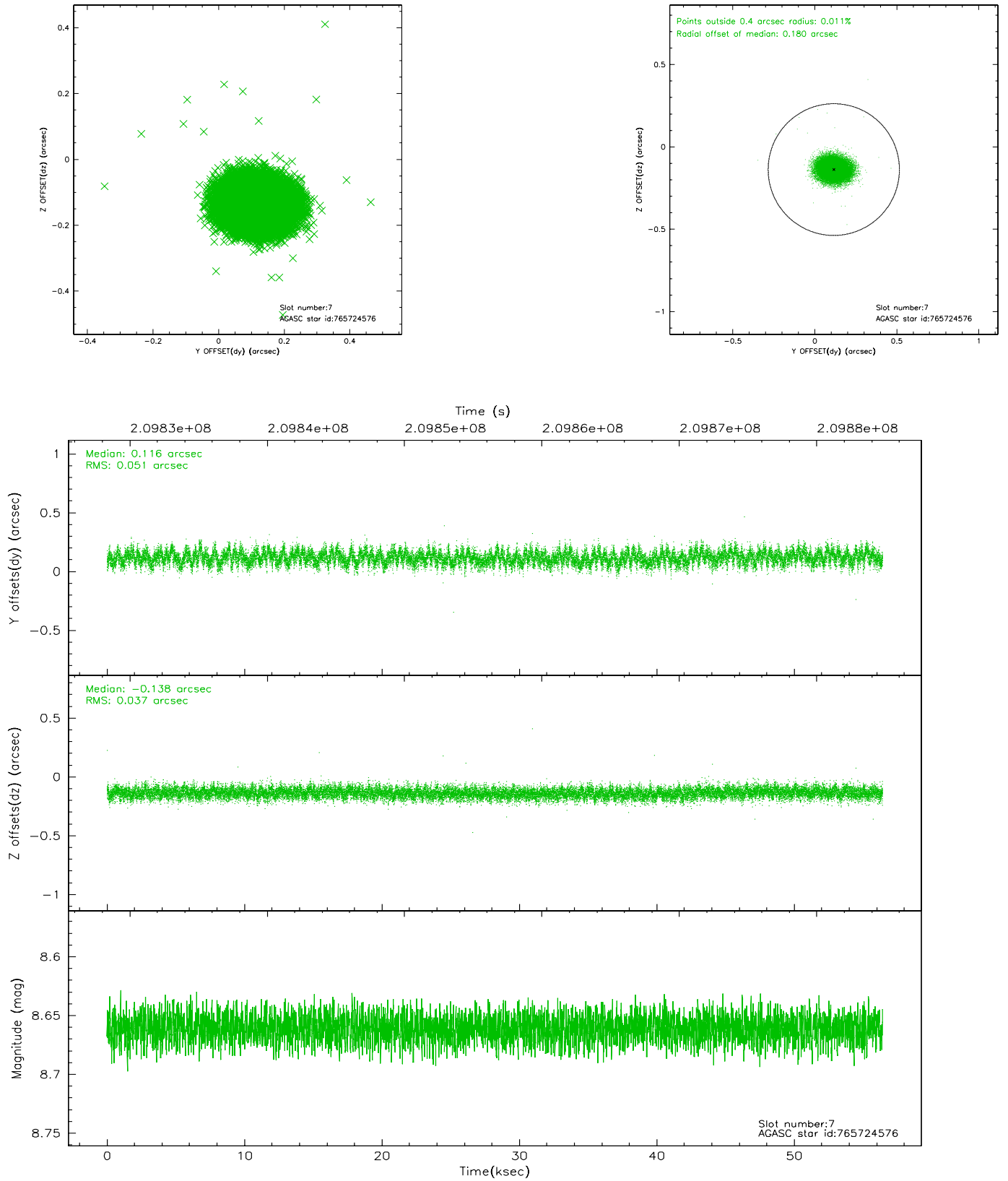


## 2.4.4 Slot 6



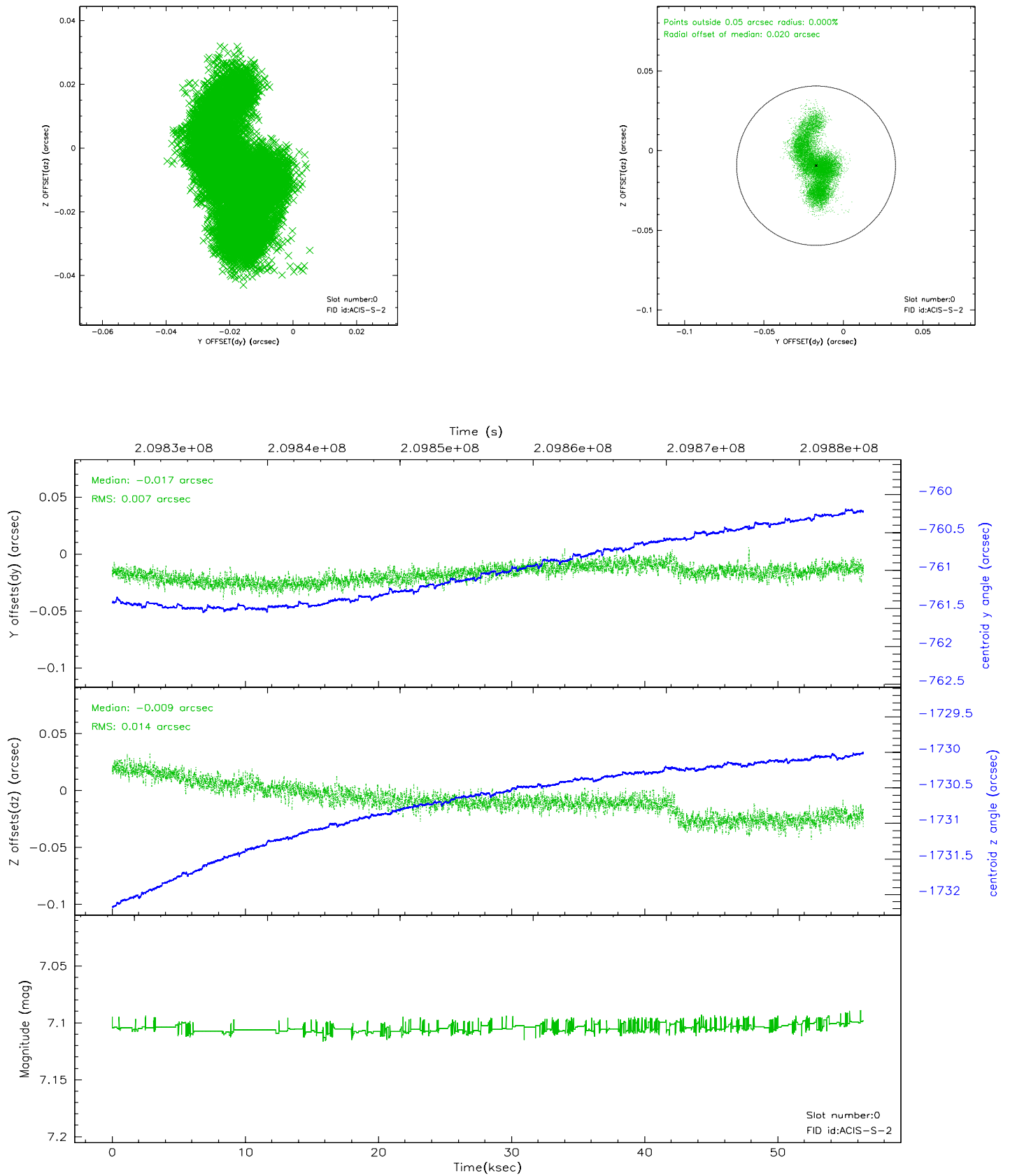


## 2.4.5 Slot 7

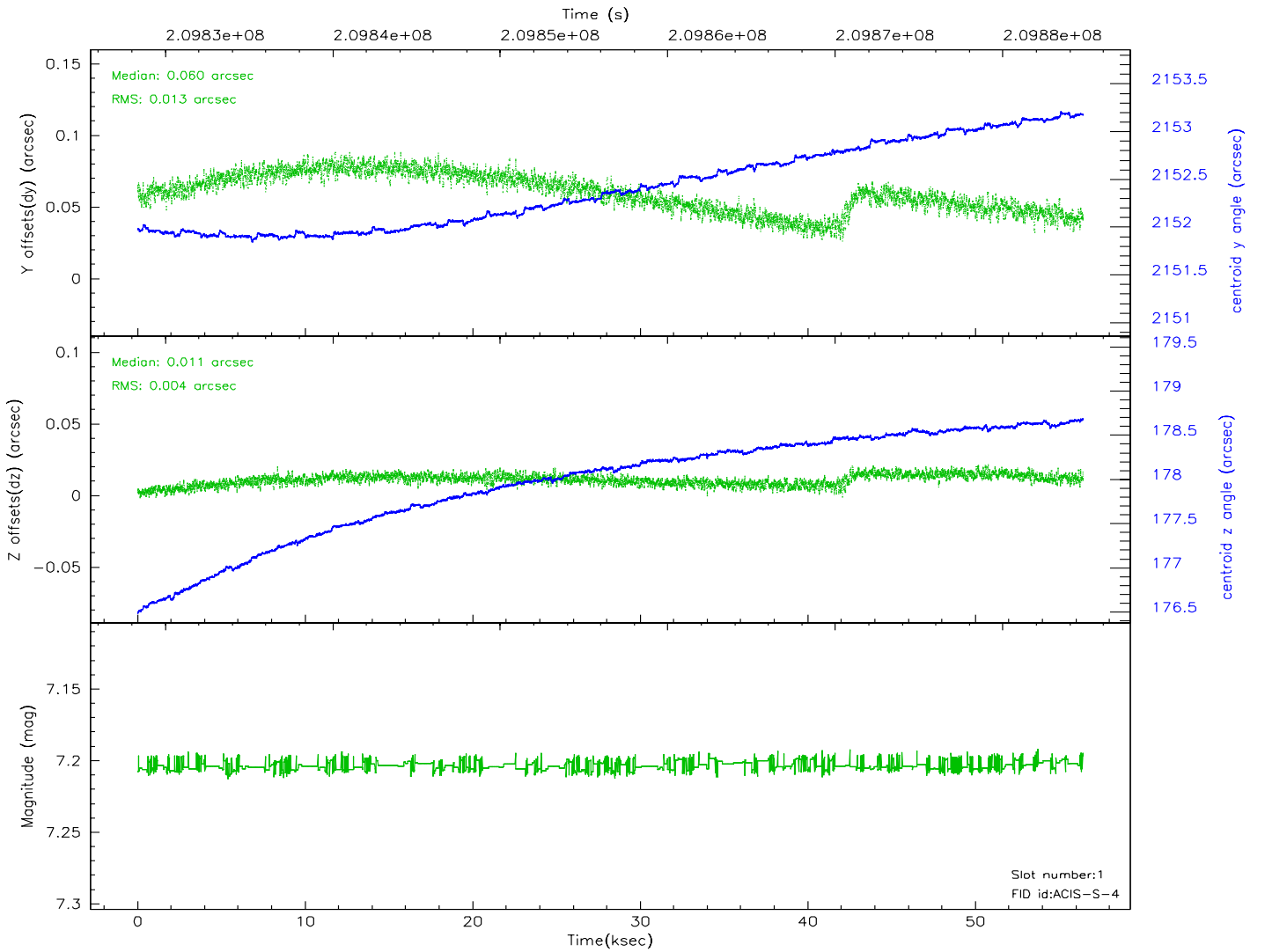
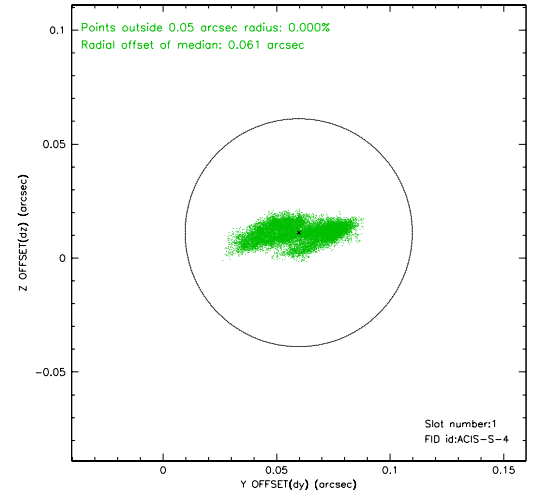
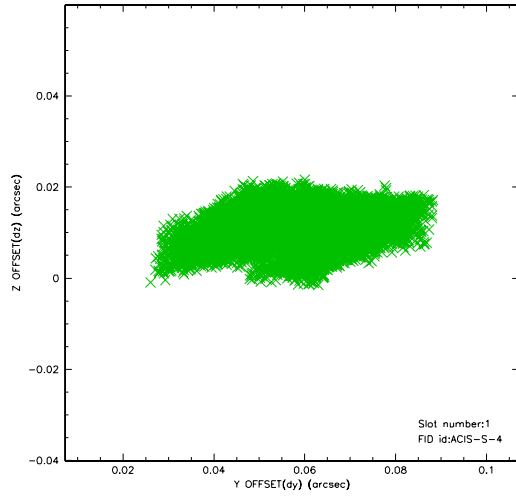


## 2.5 FID Slots

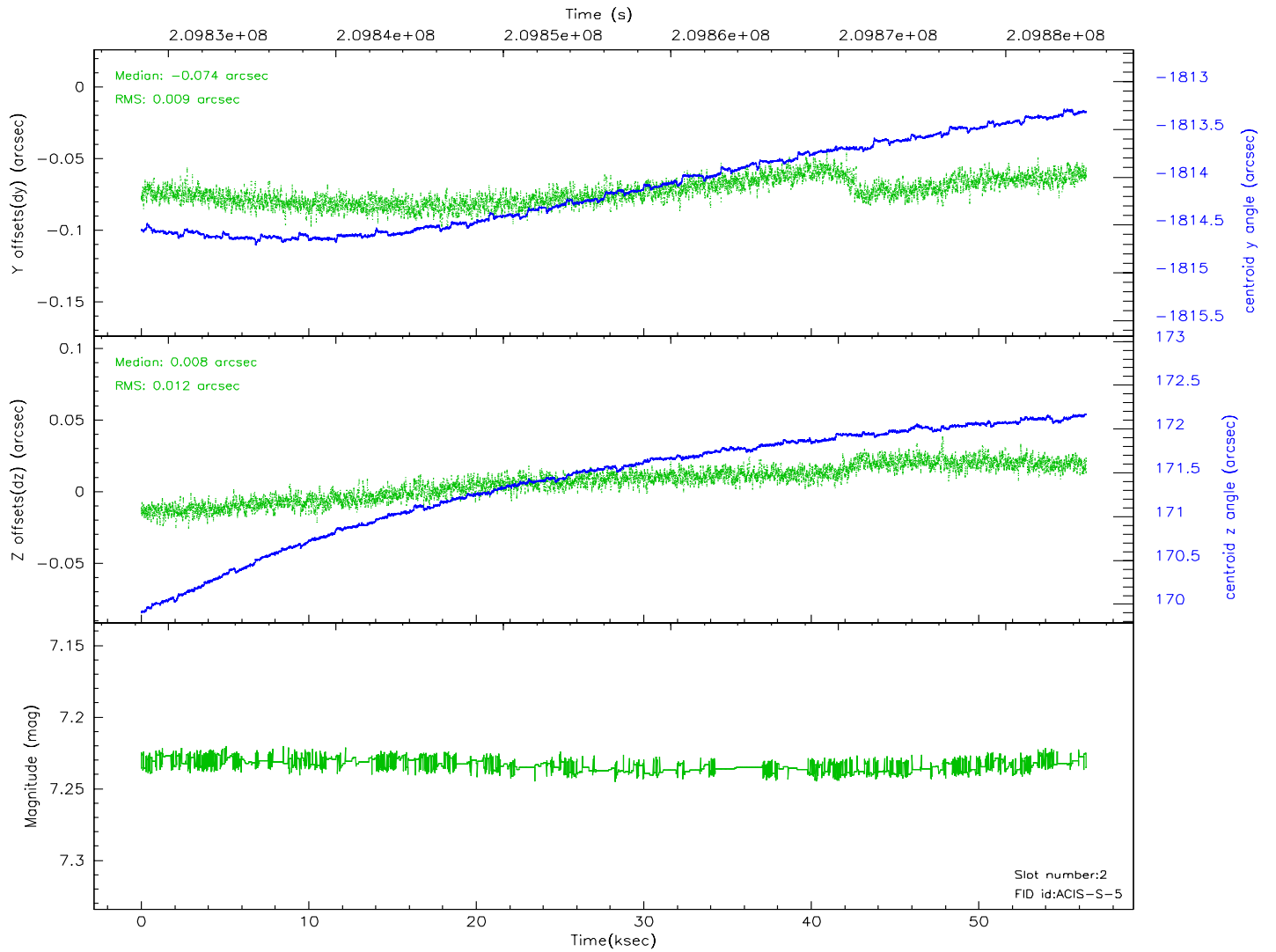
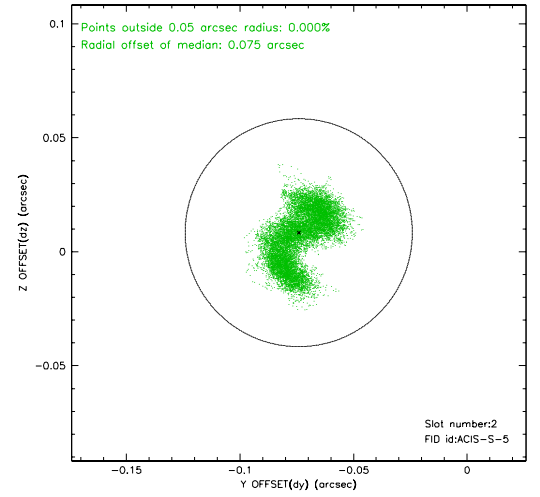
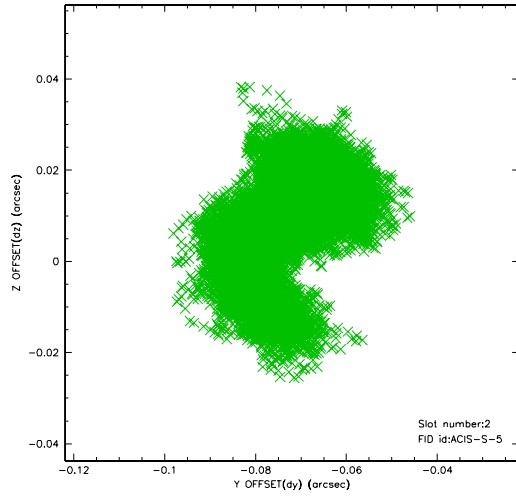
### 2.5.1 Slot 0



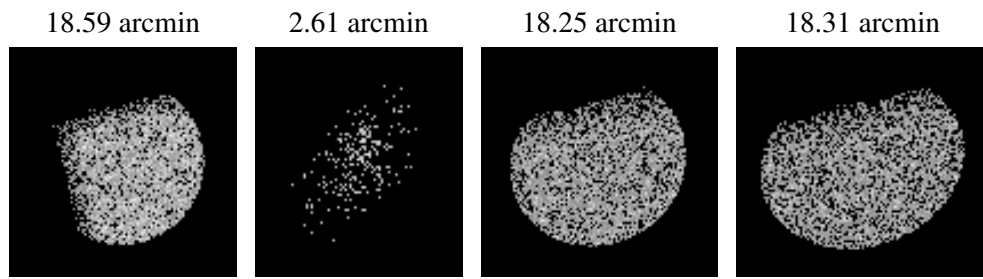
## 2.5.2 Slot 1



### 2.5.3 Slot 2



### 3 Point Sources



## A Summary

### A.1 Status

V&V Scientist	Beth Sundheim
V&V Date (YYYY-MM-DD)	2006.04.25
V&V Edition	1
V&V Disposition and Status	OK
V&V Charge Time	56.038

### A.2 Comments