

V&V Reference Report

L2 ASCDS Version : 8.4.5

Observation 5193 - L2 Version 3
Chandra X-Ray Center

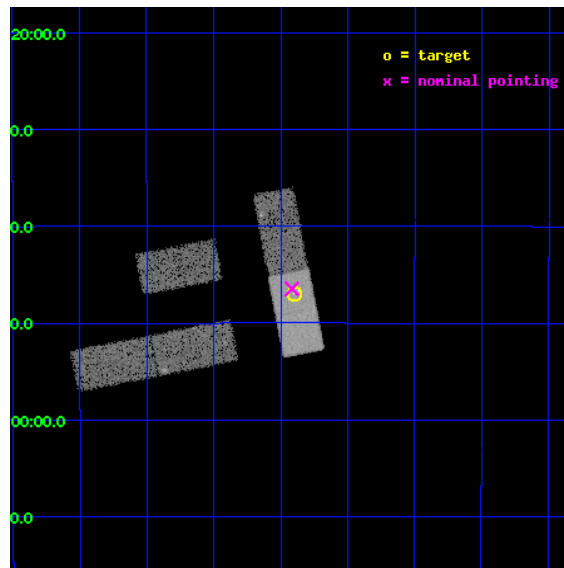
L2 Processing Date : Nov 8 2012

Contents

1	Front	2
2	OBI	3
2.1	OBI	3
2.1.1	Images	3
2.1.2	Bias	3
2.1.3	Parameters	4
2.1.4	Events	4
2.2	Compared Parameters	5
2.3	Aspect	6
2.4	Star Slots	9
2.4.1	Slot 3	9
2.4.2	Slot 4	10
2.4.3	Slot 5	11
2.4.4	Slot 6	12
2.4.5	Slot 7	13
2.5	FID Slots	14
2.5.1	Slot 0	14
2.5.2	Slot 1	15
2.5.3	Slot 2	16
A	Summary	17
A.1	Status	17
A.2	Comments	17

1 Front

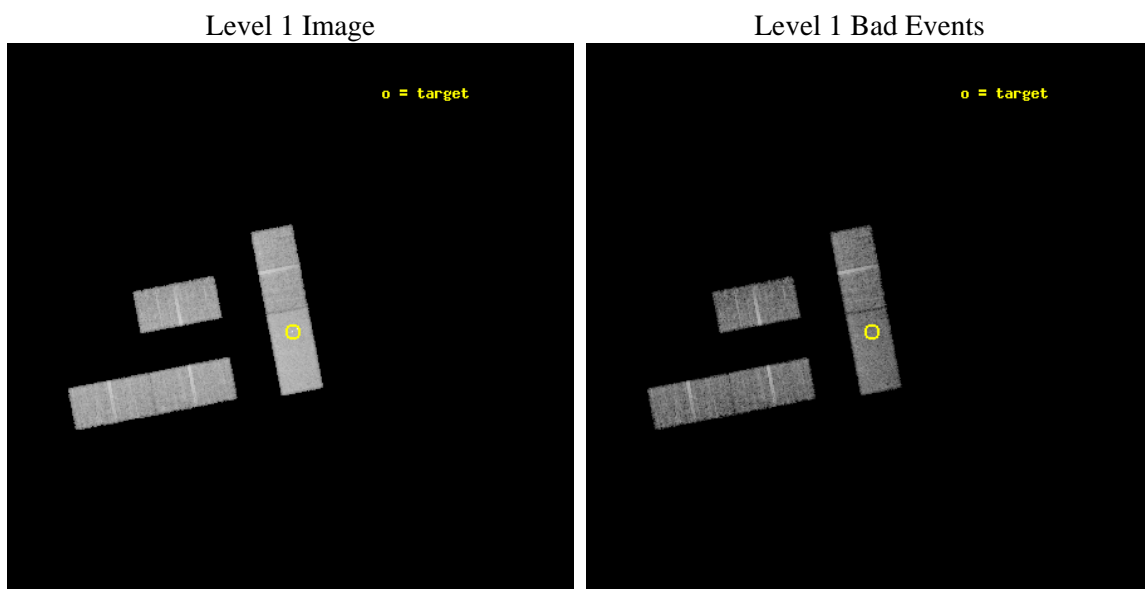
seq_num	701007	Sequence number
obs_id	5193	Observation id
title	Alternate - A STUDY OF QUASAR EVOLUTION WITH THE AID OF LENSING	Pr
observer	Professor Gordon Garmire	Principal investigator
object	Q1017-207	Source name
dtcycle	0	
cycle	P	events from which exps? Prim/Second/Both
ra_targ	154.350417	Observer's specified target RA [deg]
dec_targ	-20.783444	Observer's specified target Dec [deg]
ra_nom	154.35413354336	Nominal RA [deg]
dec_nom	-20.774412441485	Nominal Dec [deg]
roll_nom	79.079873212079	Nominal Roll [deg]
revision	3	Processing version of data
ontime	15005.899894774	Sum of GTIs [s]
livetime	14652.17905454	Livetime [s]
ontime1	15005.899894774	Sum of GTIs [s]
ontime2	15004.158884645	Sum of GTIs [s]
ontime3	15005.899894774	Sum of GTIs [s]
ontime6	15005.899894774	Sum of GTIs [s]
ontime7	15005.899894774	Sum of GTIs [s]
l2events	53447	Number of level 2 events



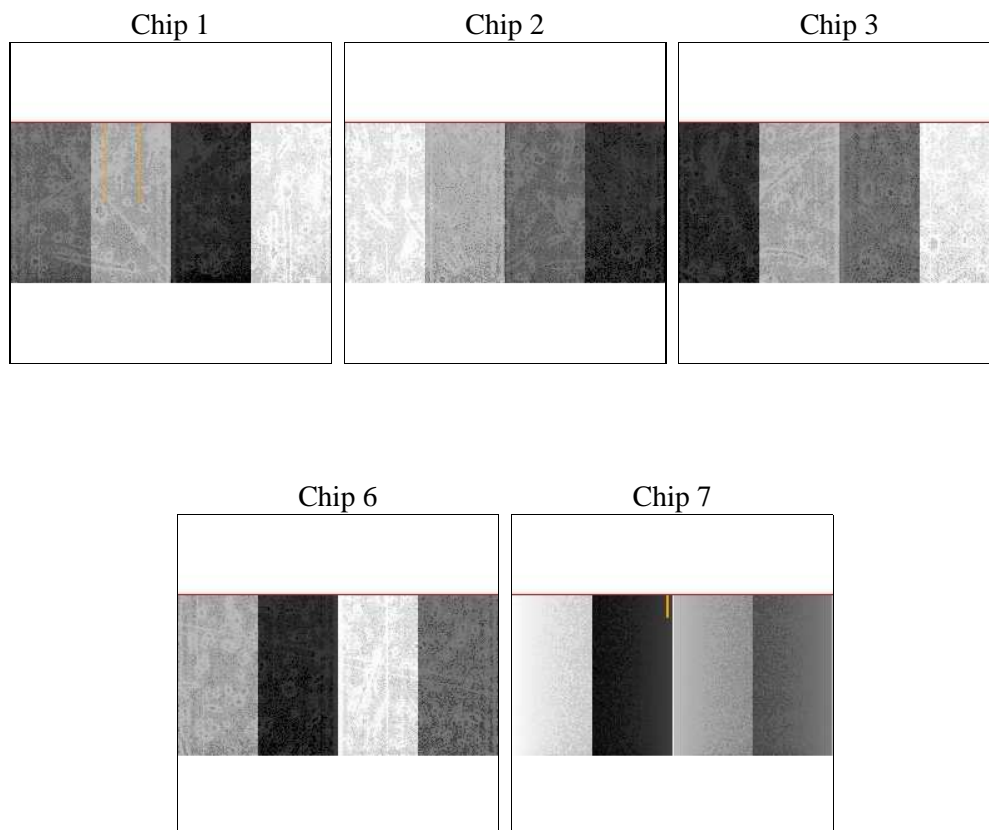
2 OBI

2.1 OBI

2.1.1 Images



2.1.2 Bias



2.1.3 Parameters

obi_num	0	Obi number	sched_exp_time	14800.000000	[s] Scheduled observation exposure time
ascdsver	8.4.5	Processing system revision	ontime	15005.899894774	Sum of GTIs [s]
caldsver	4.5.2	 	ontime1	15005.899894774	Sum of GTIs [s]
date	2012-11-08T02:09:50	Date and time of file creation	ontime2	15004.158884645	Sum of GTIs [s]
revision	3	Processing version of data	ontime3	15005.899894774	Sum of GTIs [s]
			ontime6	15005.899894774	Sum of GTIs [s]
			ontime7	15005.899894774	Sum of GTIs [s]
			l1events	256875	Number of level 1 events

2.1.4 Events

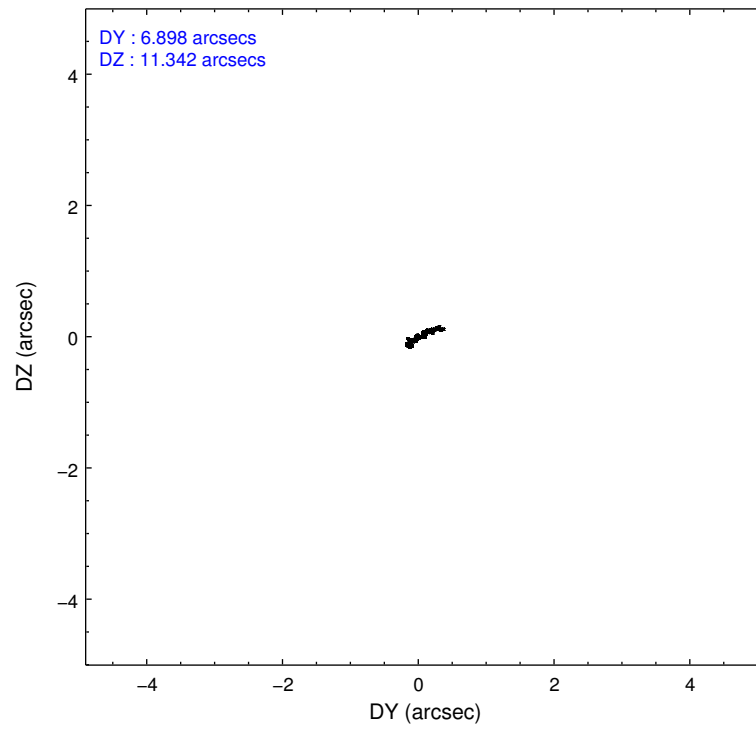
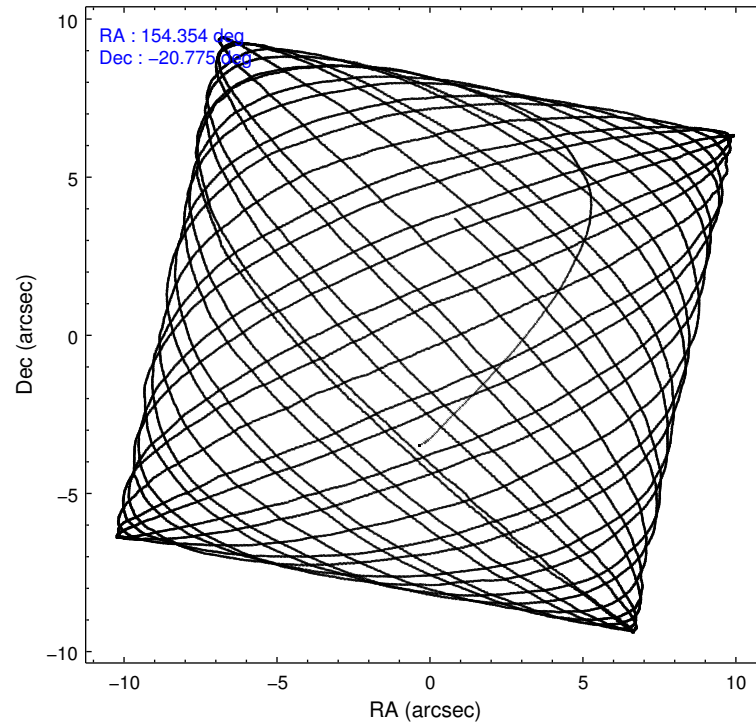
	ccd 1	ccd 2	ccd 3	ccd 6	ccd 7
level 1 events	46191	46229	46373	48896	69186
rejected events	39827	40255	40103	42172	36677
rejected %	86%	87%	86%	86%	53%

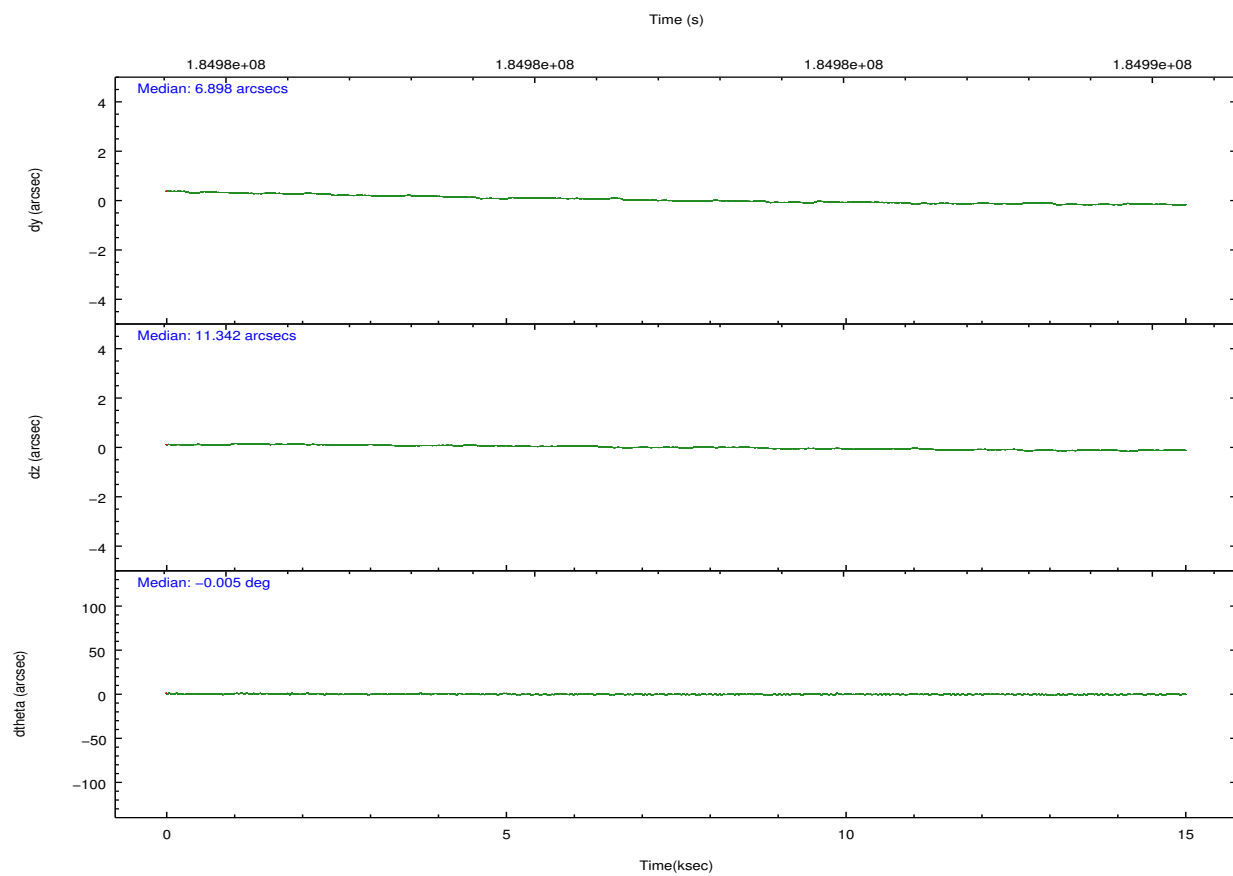
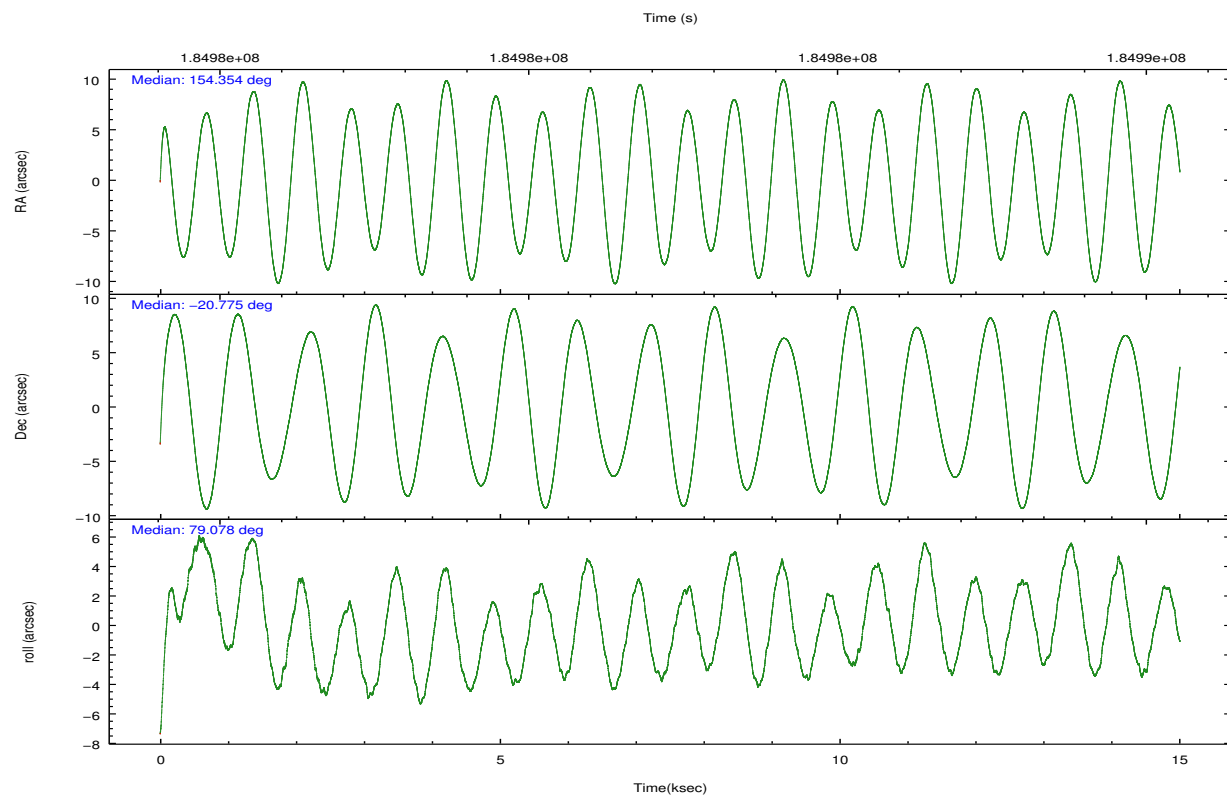
	ccd 1	ccd 2	ccd 3	ccd 6	ccd 7
grade 0 events	2571	2747	2847	3008	3581
	5%	5%	6%	6%	5%
grade 1 events	15	18	25	18	58
	0%	0%	0%	0%	0%
grade 2 events	1361	1109	1120	1258	6665
	2%	2%	2%	2%	9%
grade 3 events	724	641	695	721	3098
	1%	1%	1%	1%	4%
grade 4 events	698	618	702	678	3085
	1%	1%	1%	1%	4%
grade 5 events	1894	1793	1954	2225	5978
	4%	3%	4%	4%	8%
grade 6 events	1118	957	1021	1188	16645
	2%	2%	2%	2%	24%
grade 7 events	37810	38346	38009	39800	30076
	81%	82%	81%	81%	43%

2.2 Compared Parameters

Parameter	Planned	Actual	Parameter	Planned	Actual
Instrument	ACIS	ACIS	Obspar format version number	7	7
Detector	ACIS-12367	ACIS-12367	Obspar file type	PREDICTED	ACTUAL
Grating	NONE	NONE	Obspar update status	NONE	UPDATED
Data mode	VFAINT	VFAINT	Number of optional ACIS chips dropped	0	0
Observation mode	POINTING	POINTING	On-chip summing requested	N	N
[deg] Pointing RA	154.364021	154.3541335433561	Subarray requested	CUSTOM	1/2
[deg] Pointing Dec	-20.800034	-20.77441244148467	Subarray start row	257	257
[deg] Pointing Roll	78.926762	79.07987321207882	Subarray row count	512	512
[mm] SIM focus pos	-0.684267	-0.6828225247311905	Alternating exposures requested	N	N
[mm] SIM defocus	0	0.001444936568705701	[s] Primary exposure time	0.000000	1.7
[mm] SIM translation stage pos	-190.132523	-190.1400660498719			
[mm] SIM translation stage offset	0	0.00754346686406393			
[s] Observation start time (MET)	184974986.184000	184974012.57262			
Observation start date	2003-11-11T21:55:22	2003-11-11T21:40:12			
[s] Observation end time (MET)	184989786.184000	184990574.52333			
Observation end date	2003-11-12T02:02:02	2003-11-12T02:16:14			
Read mode	TIMED	TIMED			

2.3 Aspect



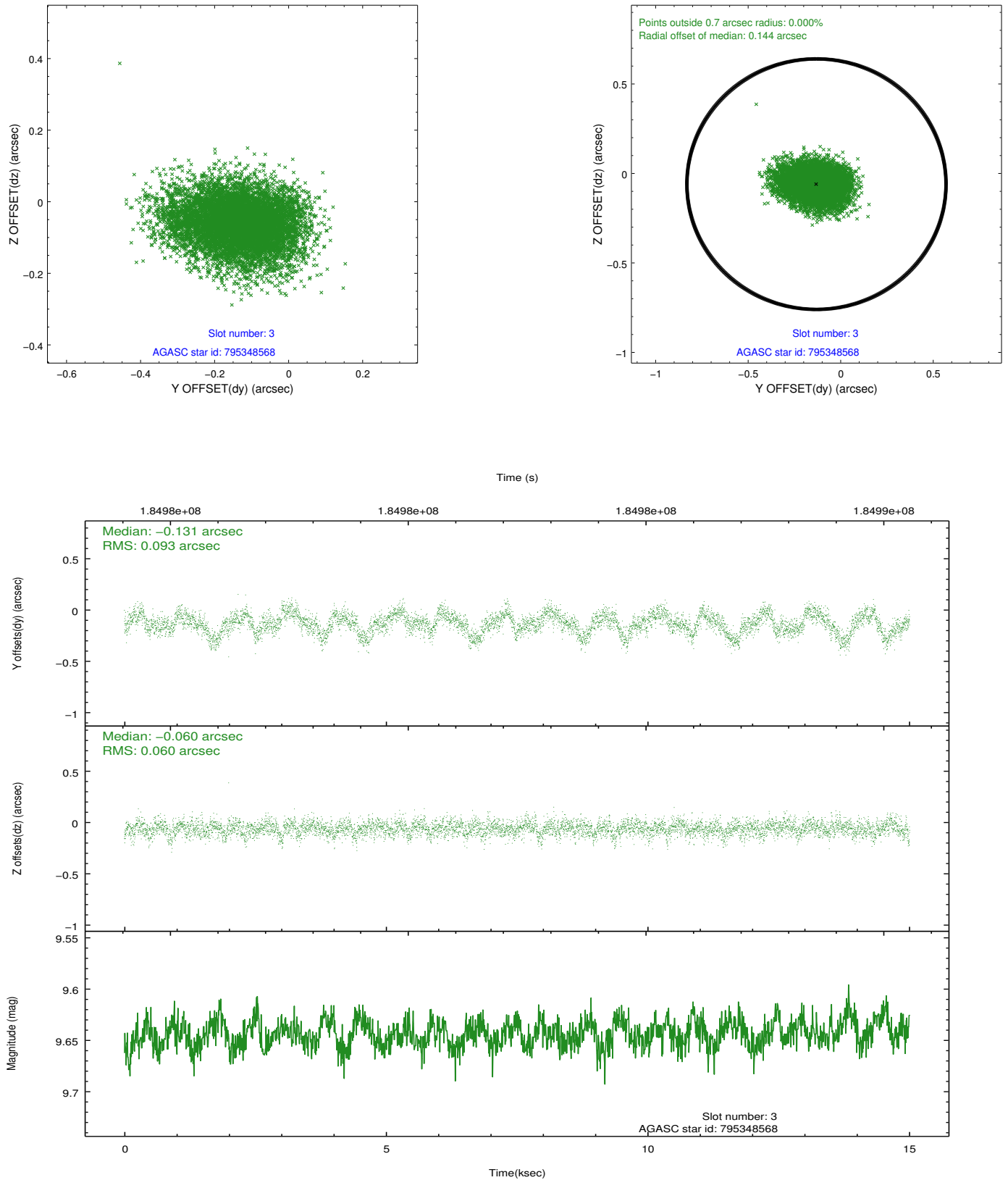


Slot Statistics

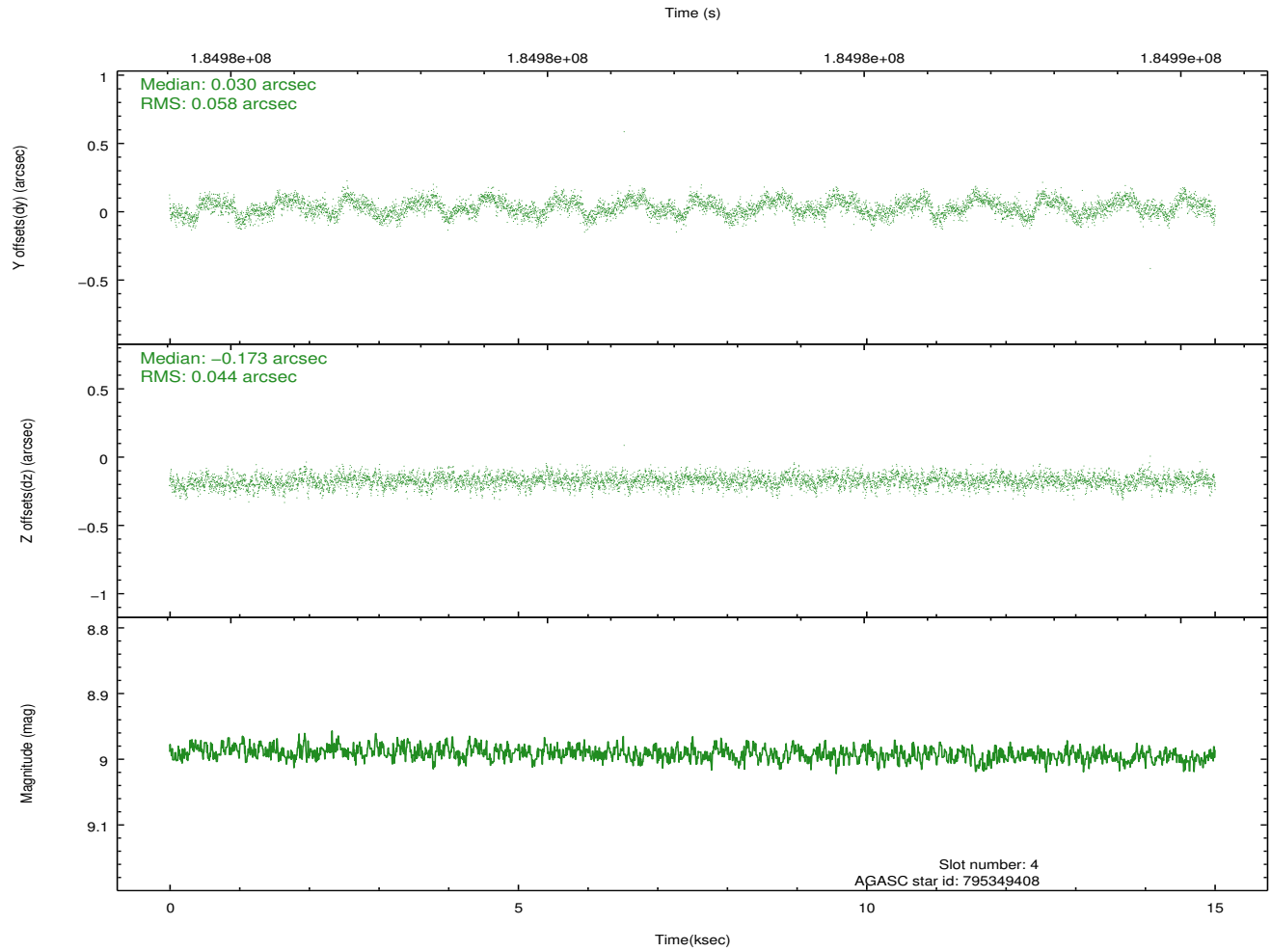
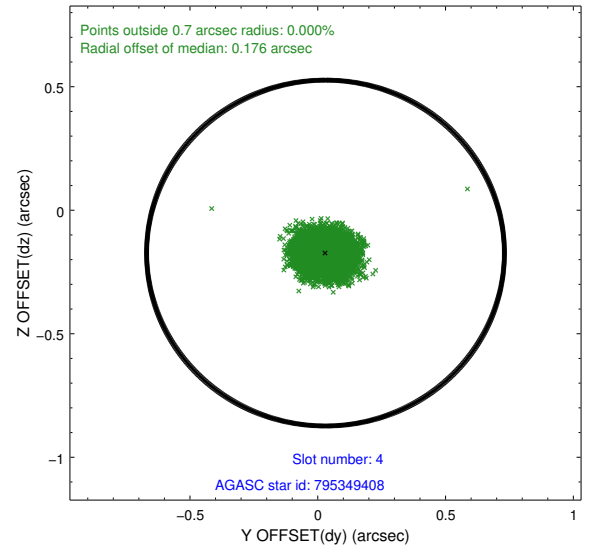
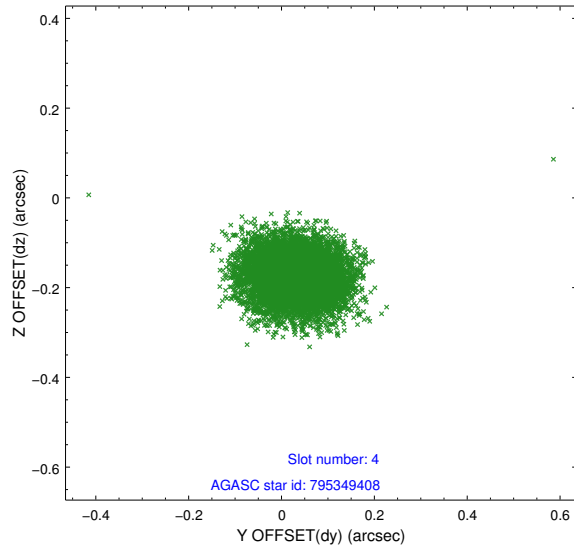
slot	status	id	mag	n_pts	med_dy	med_dz	dr1	dr2	ra	dec	mean_y	mean_z
0	FID	ACIS-S-2	7.10	3662	-0.044	-0.016	0.009	0.024	0.000000	0.000000	-759.71	-1732.65
1	FID	ACIS-S-4	7.20	3661	0.060	0.026	0.008	0.023	0.000000	0.000000	2153.51	175.59
2	FID	ACIS-S-5	7.23	3661	-0.047	-0.000	0.010	0.018	0.000000	0.000000	-1812.19	169.54
3	GUIDE	795348568	9.64	7319	-0.131	-0.060	0.117	0.193	154.597868	-20.494010	1232.27	-562.28
4	GUIDE	795349408	8.99	7321	0.030	-0.173	0.078	0.123	154.208540	-20.493910	981.02	726.15
5	GUIDE	795351136	8.43	7321	-0.195	0.131	0.060	0.097	154.748596	-20.311207	1975.17	-936.11
6	GUIDE	795875200	9.34	7319	0.250	0.064	0.081	0.131	154.628771	-21.519433	-2371.26	-1367.71
7	GUIDE	795878120	8.55	7319	0.049	0.040	0.082	0.122	155.010361	-21.224251	-1086.39	-2422.84

2.4 Star Slots

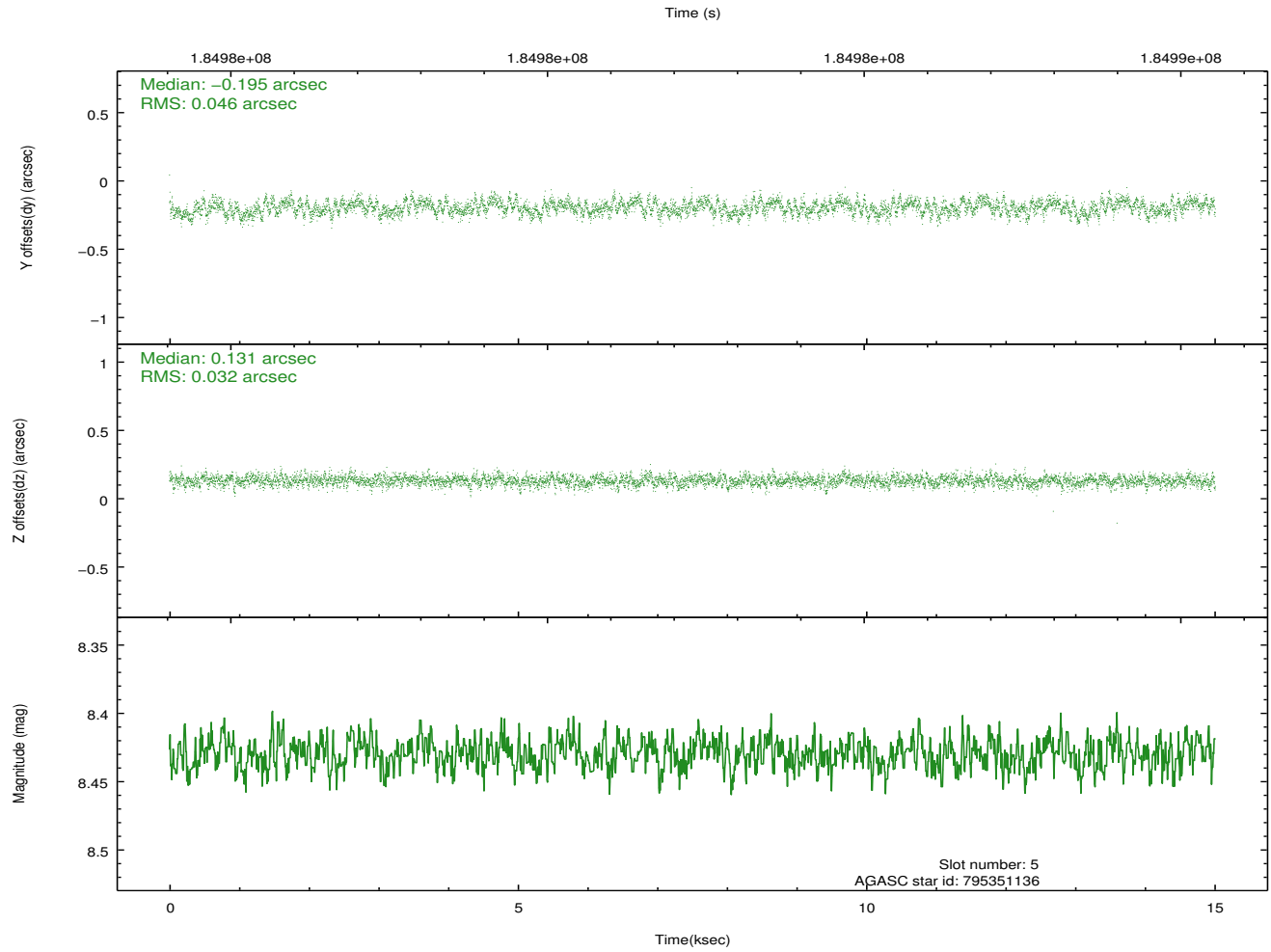
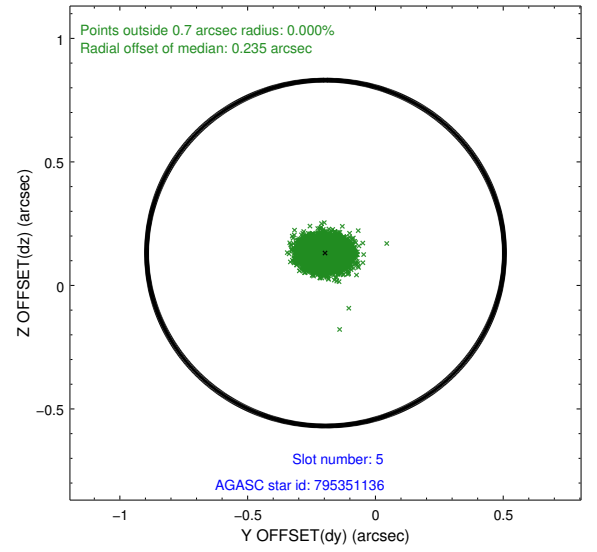
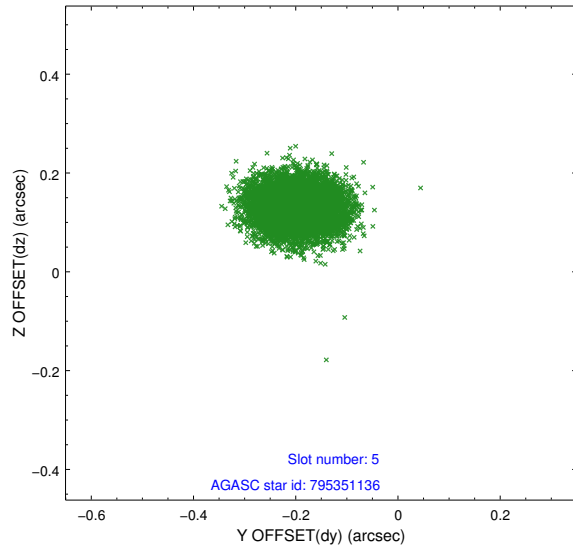
2.4.1 Slot 3



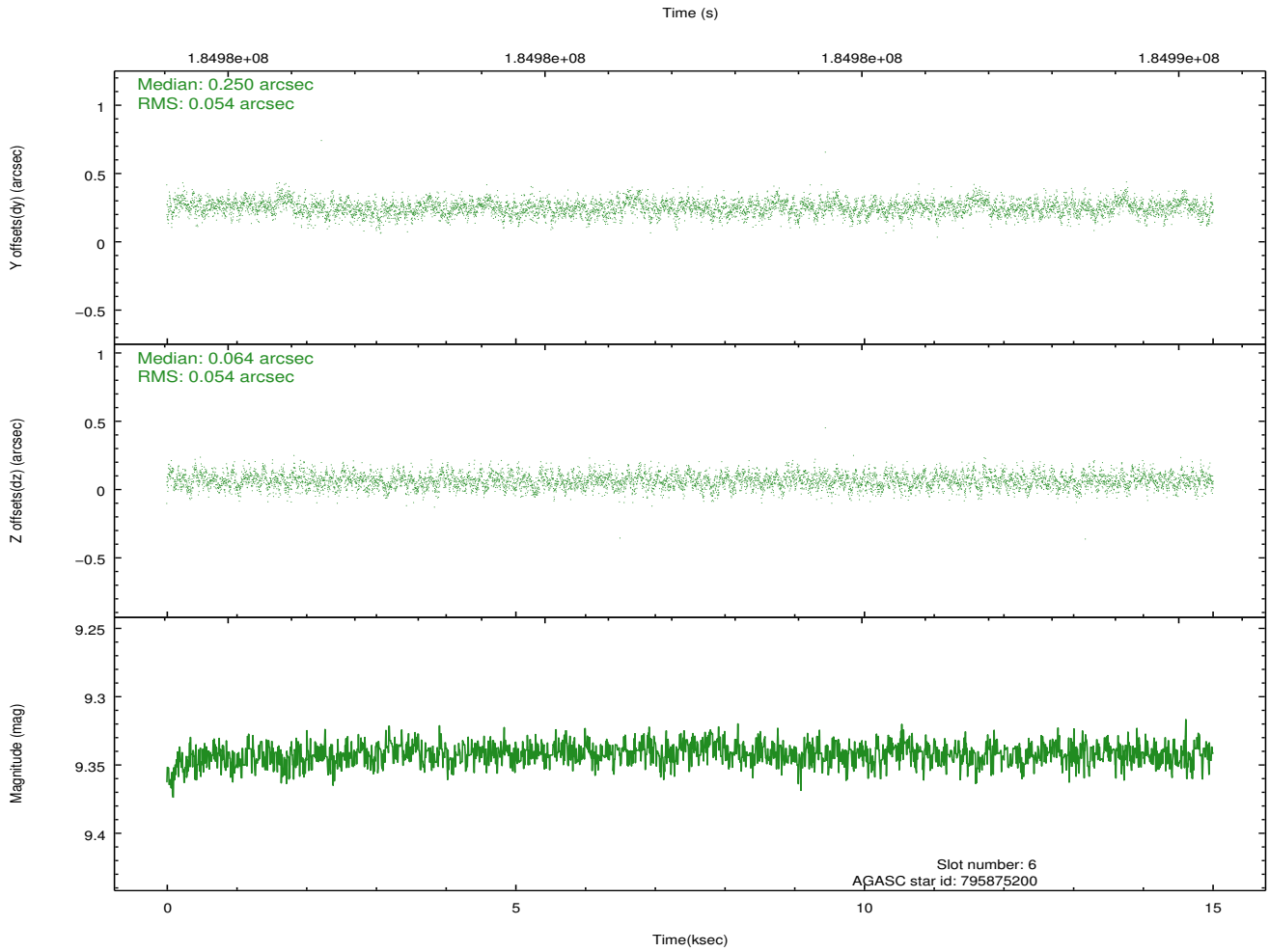
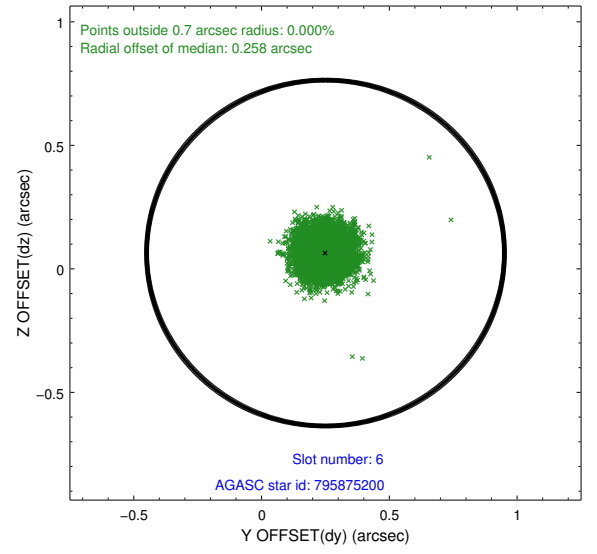
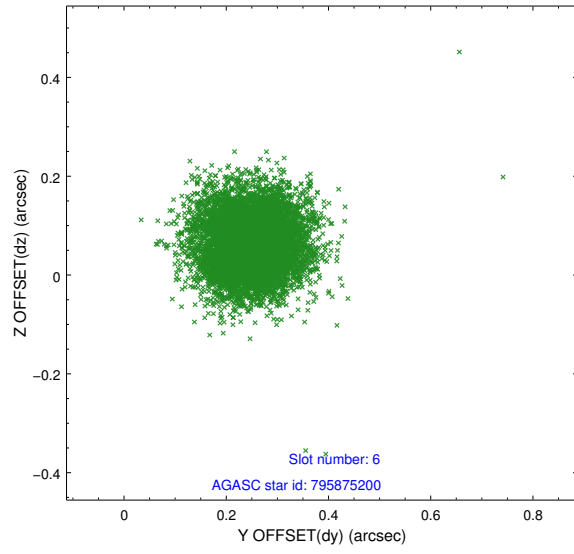
2.4.2 Slot 4



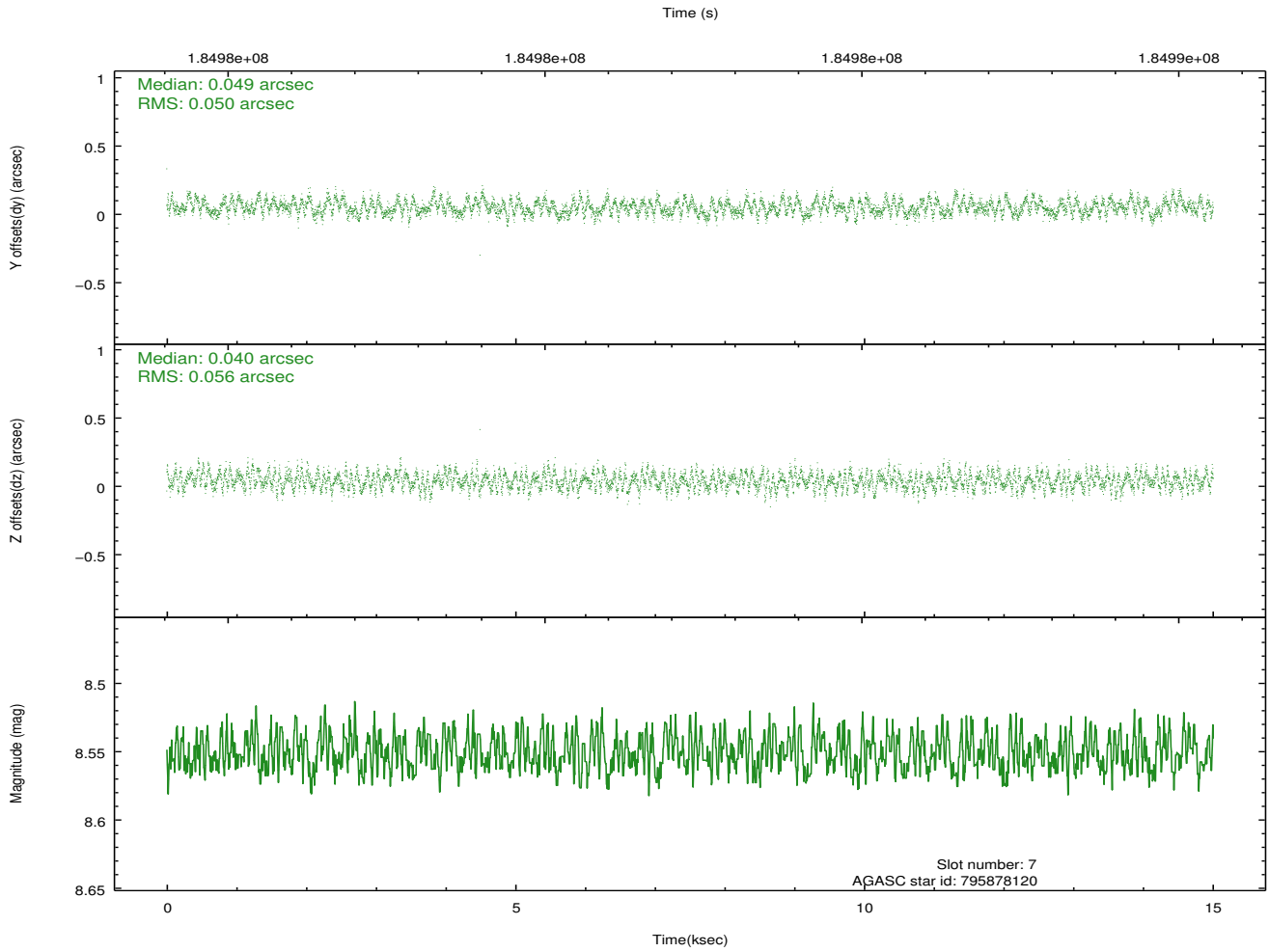
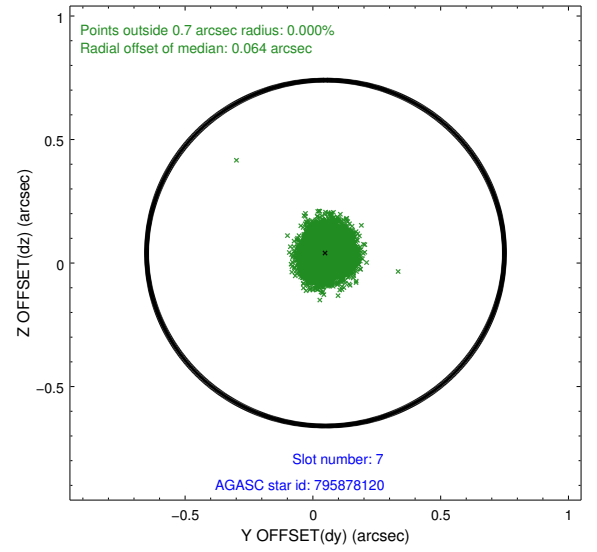
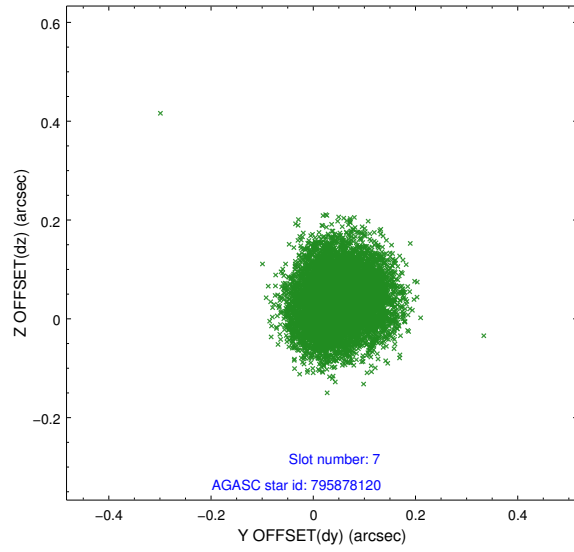
2.4.3 Slot 5



2.4.4 Slot 6

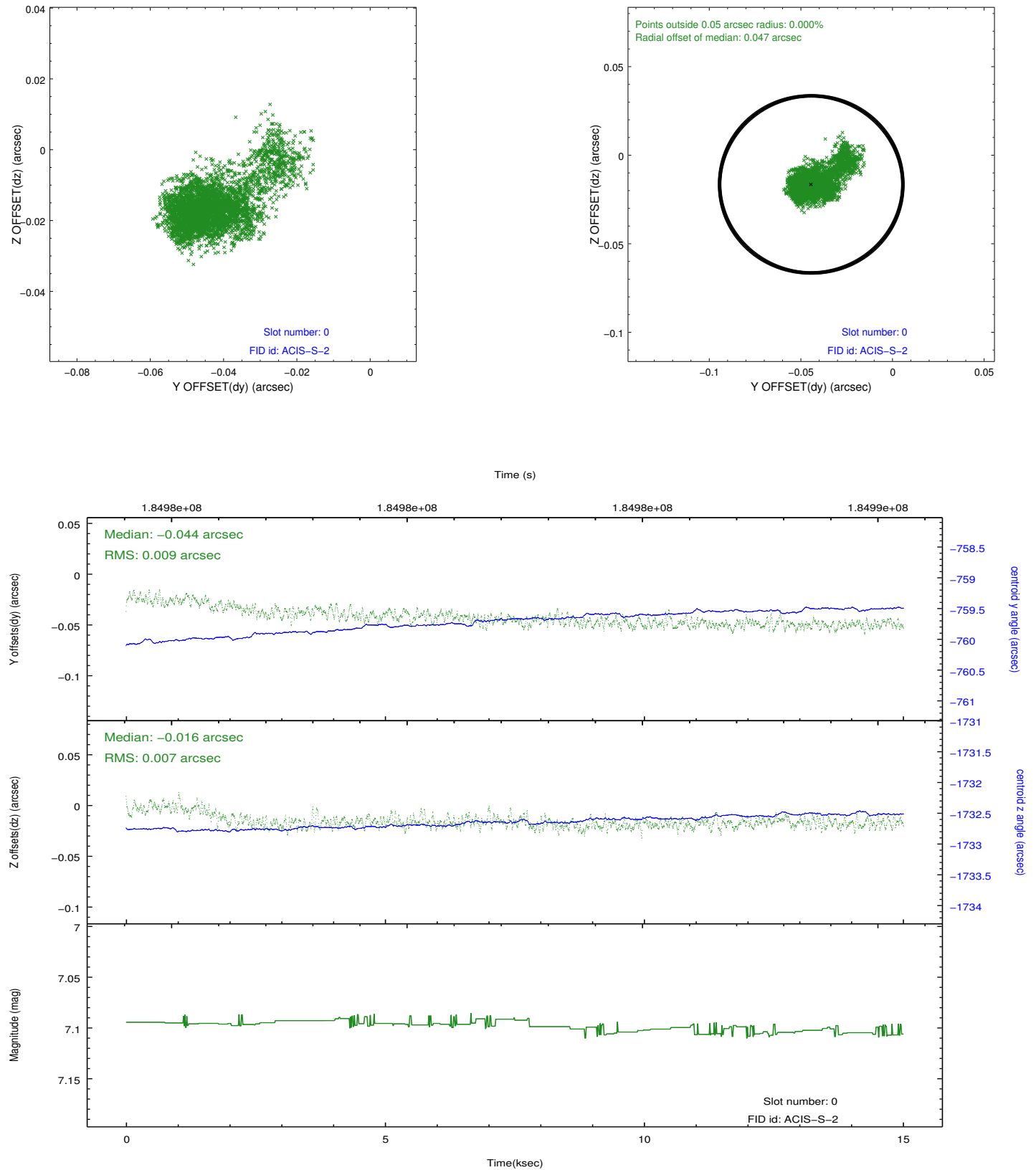


2.4.5 Slot 7

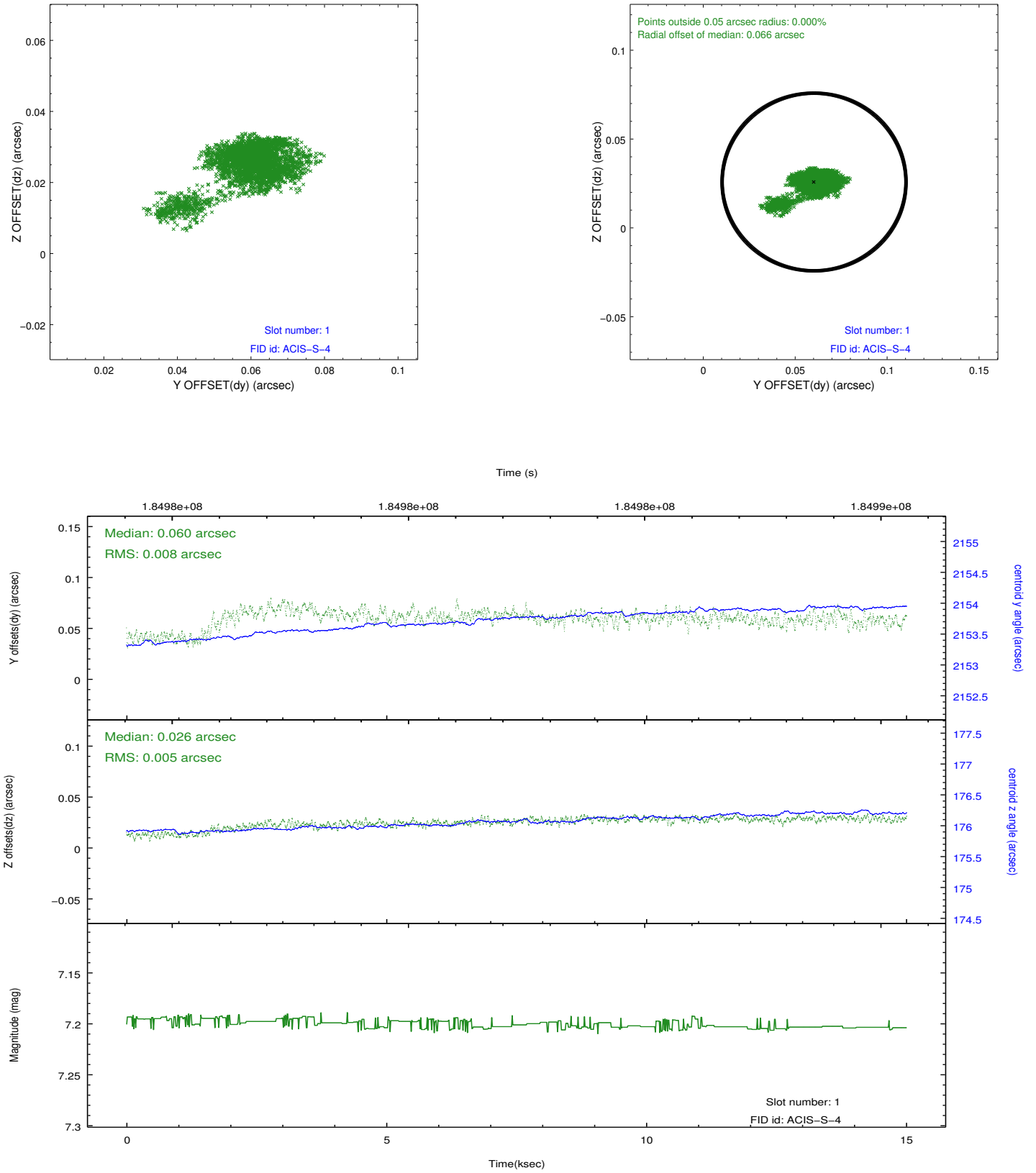


2.5 FID Slots

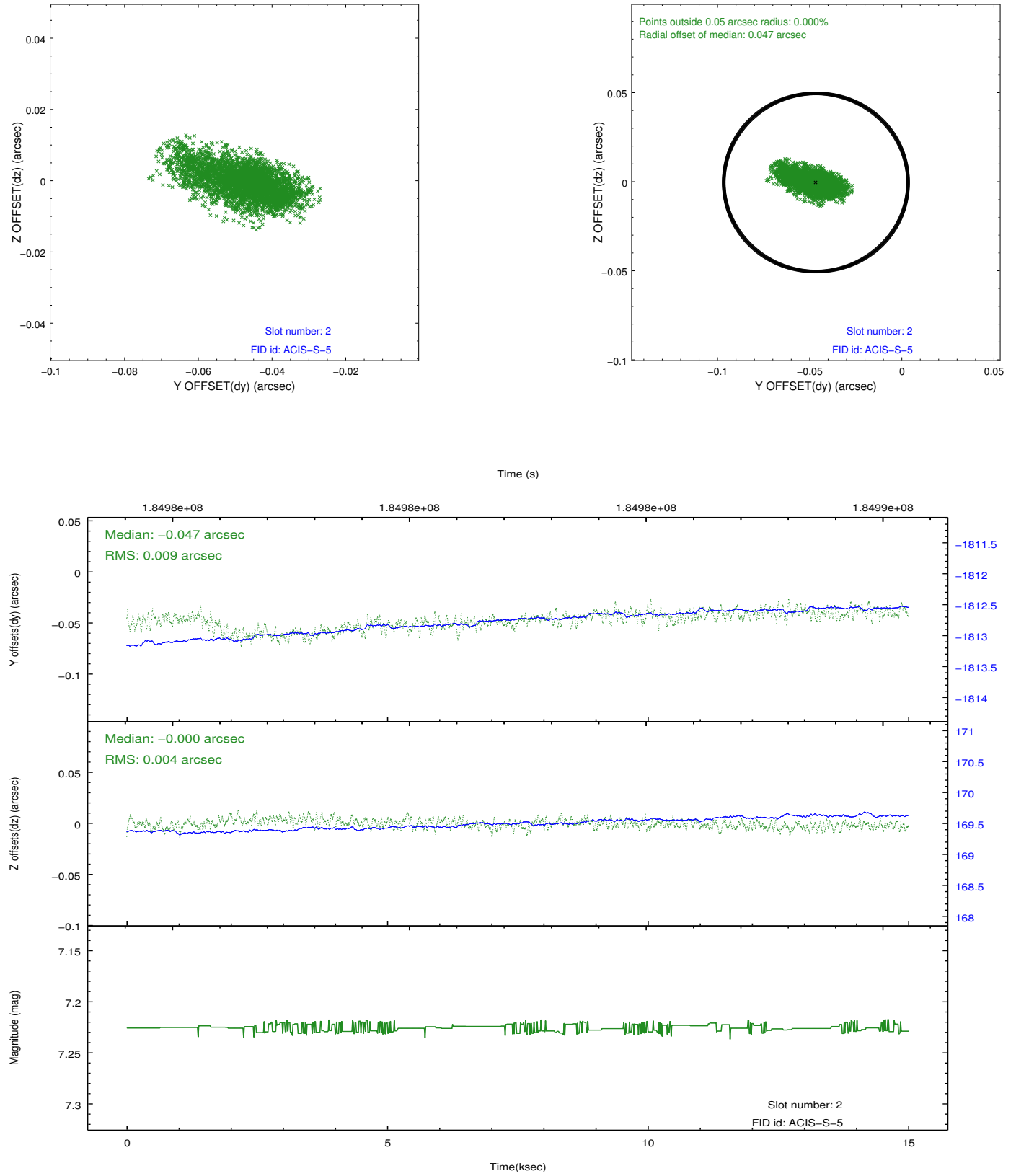
2.5.1 Slot 0



2.5.2 Slot 1



2.5.3 Slot 2



A Summary

A.1 Status

V&V Scientist	Beth Sundheim
V&V Date (YYYY-MM-DD)	2012.11.28
V&V Edition	1
V&V Disposition and Status	OK
V&V Charge Time	15.005

A.2 Comments