

V&V Reference Report

L2 ASCDS Version : 7.6.7.2

Observation 4915 - L2 Version 001
Chandra X-Ray Center

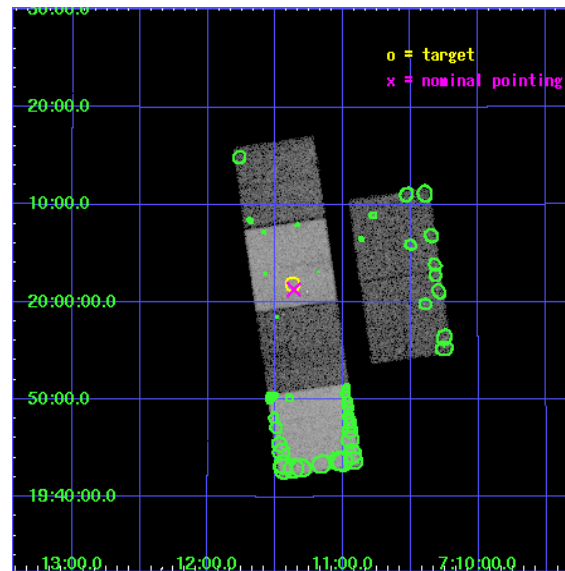
L2 Processing Date : May 18 2006

Contents

| | | |
|----------|-------------------------------|-----------|
| 1 | Front | 2 |
| 2 | OBI | 3 |
| 2.1 | OBI | 3 |
| 2.1.1 | Images | 3 |
| 2.1.2 | Bias | 3 |
| 2.1.3 | Parameters | 4 |
| 2.1.4 | Events | 4 |
| 2.2 | Compared Parameters | 5 |
| 2.3 | Aspect | 6 |
| 2.4 | Star Slots | 9 |
| 2.4.1 | Slot 3 | 9 |
| 2.4.2 | Slot 4 | 10 |
| 2.4.3 | Slot 5 | 11 |
| 2.4.4 | Slot 6 | 12 |
| 2.4.5 | Slot 7 | 13 |
| 2.5 | FID Slots | 14 |
| 2.5.1 | Slot 0 | 14 |
| 2.5.2 | Slot 1 | 15 |
| 2.5.3 | Slot 2 | 16 |
| 3 | Point Sources | 17 |
| A | Summary | 18 |
| A.1 | Status | 18 |
| A.2 | Comments | 18 |

1 Front

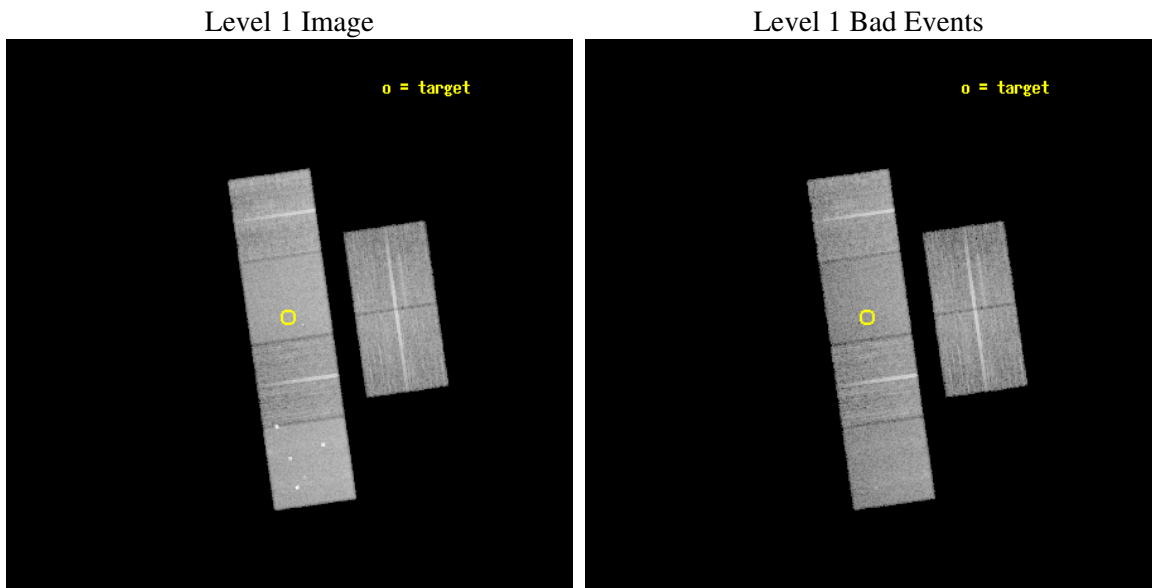
| | |
|----------|--|
| seq_num | 700996 |
| obs_id | 4915 |
| title | Characterization of quiescent X-ray emission from peculiar X-ray flash sources |
| observer | Dr Mariano Mendez |
| object | LEDA 1613994 |
| dtcycle | 0 |
| cycle | P |
| ra_targ | 107.844167 |
| dec_targ | 20.031139 |
| ra_nom | 107.84093444782 |
| dec_nom | 20.021948245215 |
| roll_nom | 261.83860233958 |
| revision | 2 |
| ontime | 15196.799943388 |
| livetime | 15004.36891209 |
| ontime2 | 15196.799943388 |
| ontime3 | 15196.799943388 |
| ontime5 | 15196.799943388 |
| ontime6 | 15196.799943388 |
| ontime7 | 15196.799943388 |
| ontime8 | 15196.799943388 |
| l2events | 165914 |



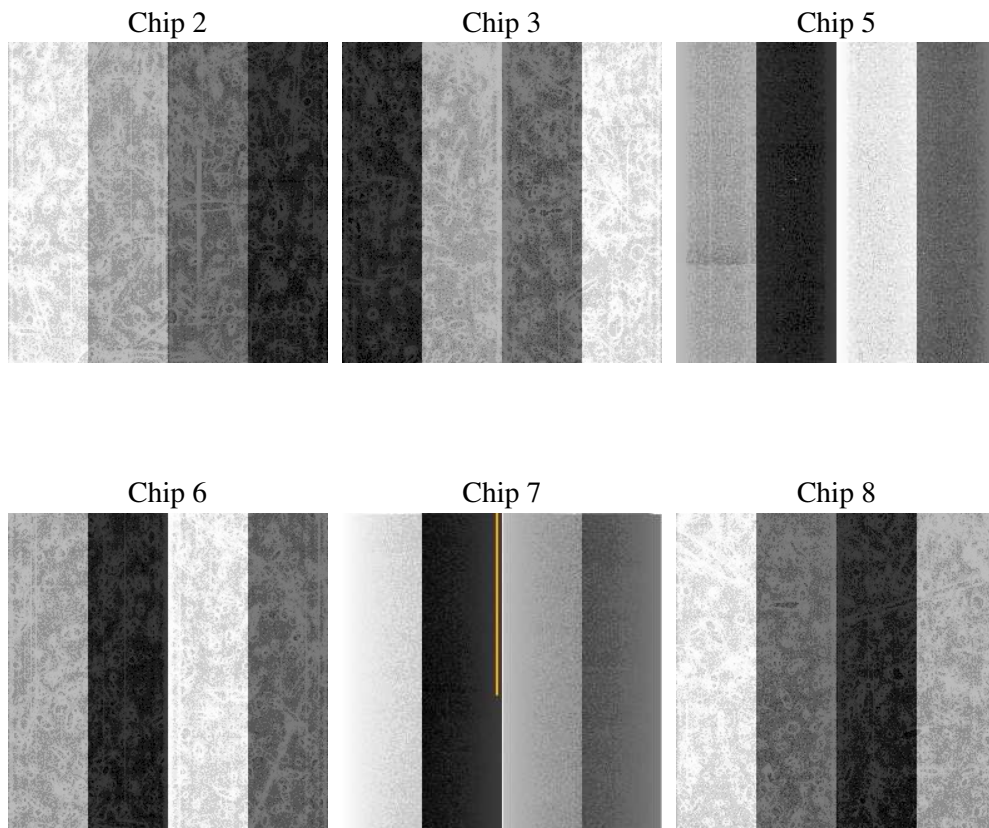
2 OBI

2.1 OBI

2.1.1 Images



2.1.2 Bias



2.1.3 Parameters

| | |
|----------|---------------------|
| obi_num | 0 |
| ascdsver | 7.6.7.2 |
| caldsver | 3.2.2 |
| date | 2006-05-18T18:54:53 |
| revision | 2 |

| | |
|----------------|-----------------|
| sched_exp_time | 15500.000000 |
| ontime | 15200.293070555 |
| ontime2 | 15200.293070555 |
| ontime3 | 15200.293070555 |
| ontime5 | 15200.293070555 |
| ontime6 | 15200.293070555 |
| ontime7 | 15200.293070555 |
| ontime8 | 15200.293070555 |
| l1events | 772780 |

2.1.4 Events

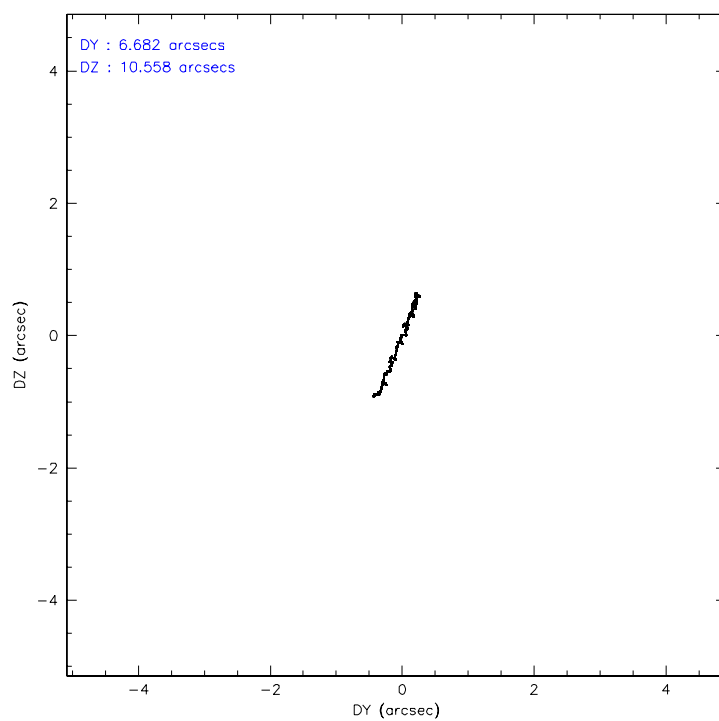
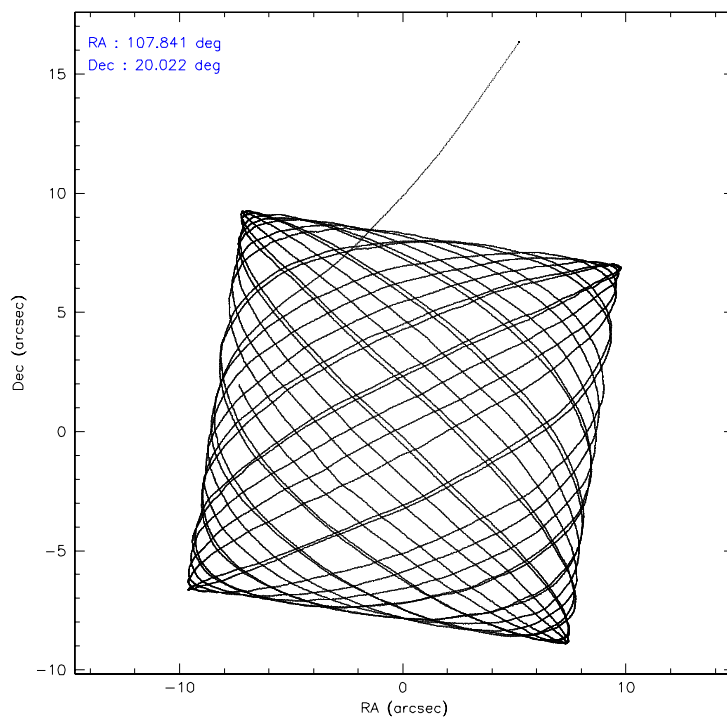
| | ccd 2 | ccd 3 | ccd 5 | ccd 6 | ccd 7 | ccd 8 |
|-----------------|--------|--------|--------|--------|--------|--------|
| level 1 events | 112027 | 102916 | 162841 | 111349 | 145787 | 137860 |
| rejected events | 99209 | 90793 | 89953 | 98637 | 90719 | 108672 |
| rejected % | 88% | 88% | 55% | 88% | 62% | 78% |

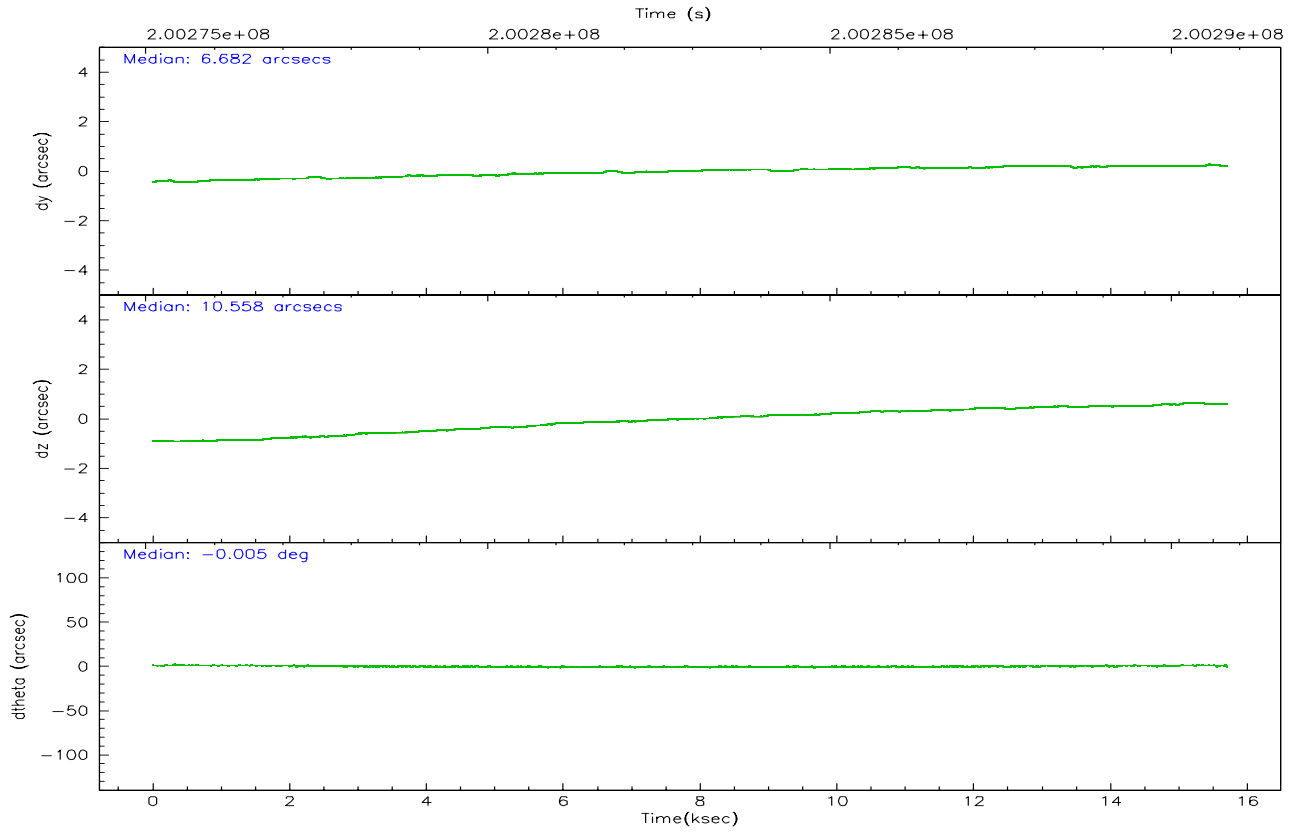
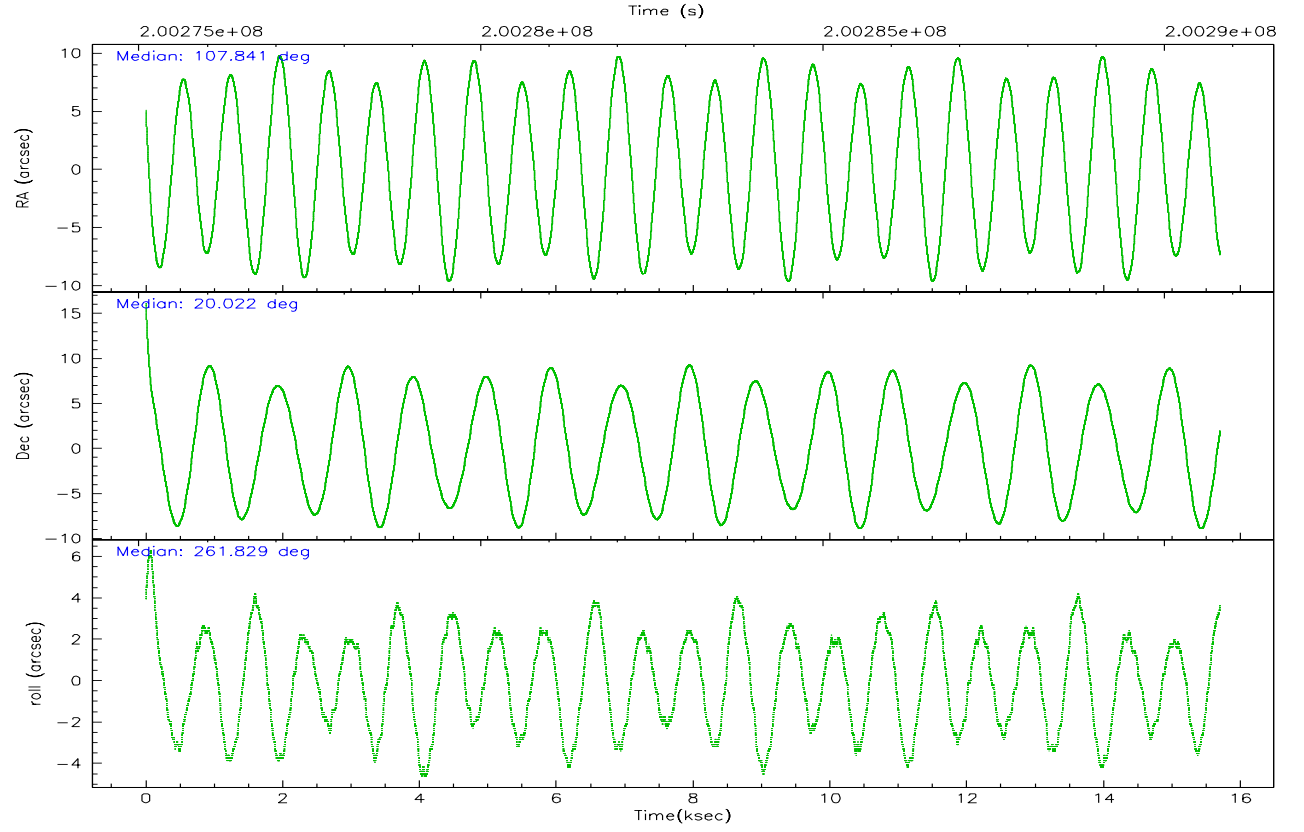
| | ccd 2 | ccd 3 | ccd 5 | ccd 6 | ccd 7 | ccd 8 |
|----------------|-------|-------|-------|-------|-------|--------|
| grade 0 events | 5692 | 5268 | 7830 | 5025 | 3047 | 9141 |
| | 5% | 5% | 4% | 4% | 2% | 6% |
| grade 1 events | 81 | 59 | 283 | 54 | 87 | 99 |
| | 0% | 0% | 0% | 0% | 0% | 0% |
| grade 2 events | 2678 | 2326 | 21737 | 2651 | 13711 | 6298 |
| | 2% | 2% | 13% | 2% | 9% | 4% |
| grade 3 events | 1234 | 1207 | 1598 | 1243 | 2730 | 3135 |
| | 1% | 1% | 0% | 1% | 1% | 2% |
| grade 4 events | 1133 | 1213 | 1520 | 1288 | 2822 | 3121 |
| | 1% | 1% | 0% | 1% | 1% | 2% |
| grade 5 events | 4360 | 4808 | 7625 | 5087 | 9850 | 6527 |
| | 3% | 4% | 4% | 4% | 6% | 4% |
| grade 6 events | 2084 | 2112 | 40215 | 2509 | 32771 | 7516 |
| | 1% | 2% | 24% | 2% | 22% | 5% |
| grade 7 events | 94765 | 85923 | 82033 | 93492 | 80769 | 102023 |
| | 84% | 83% | 50% | 83% | 55% | 74% |

2.2 Compared Parameters

| Parameter | Planned | Actual | Parameter | Planned | Actual |
|-----------------------------------|---------------------|----------------------|---------------------------------|-----------|---------|
| Instrument | ACIS | ACIS | Obspar format version number | 6 | 6 |
| Detector | ACIS-235678 | ACIS-235678 | Obspar file type | PREDICTED | ACTUAL |
| Grating | NONE | NONE | Obspar update status | NONE | UPDATED |
| Data mode | FAINT | FAINT | On-chip summing requested | N | N |
| Observation mode | POINTING | POINTING | Subarray requested | NONE | NONE |
| Pointing RA | 107.829794 | 107.8409344478157 | Alternating exposures requested | N | N |
| Pointing Dec | 20.047086 | 20.02194824521518 | Primary exposure time | 0.000000 | 3.2 |
| Pointing Roll | 261.685791 | 261.8386023395774 | | | |
| SIM focus pos (mm) | -0.684267 | -0.6828225247311905 | | | |
| SIM defocus (mm) | 0 | 0.001444936568705701 | | | |
| SIM translation stage pos (mm) | -190.132523 | -190.1400660498719 | | | |
| SIM translation stage offset (mm) | 0 | 0.00754346686406393 | | | |
| Observation start time | 200275310.184000 | 200274330.20382 | | | |
| Observation start date | 2004-05-07T00:00:46 | 2004-05-06T23:45:30 | | | |
| Observation end time | 200290810.184000 | 200292038.6171 | | | |
| Observation end date | 2004-05-07T04:19:06 | 2004-05-07T04:40:38 | | | |
| Read mode | TIMED | TIMED | | | |

2.3 Aspect



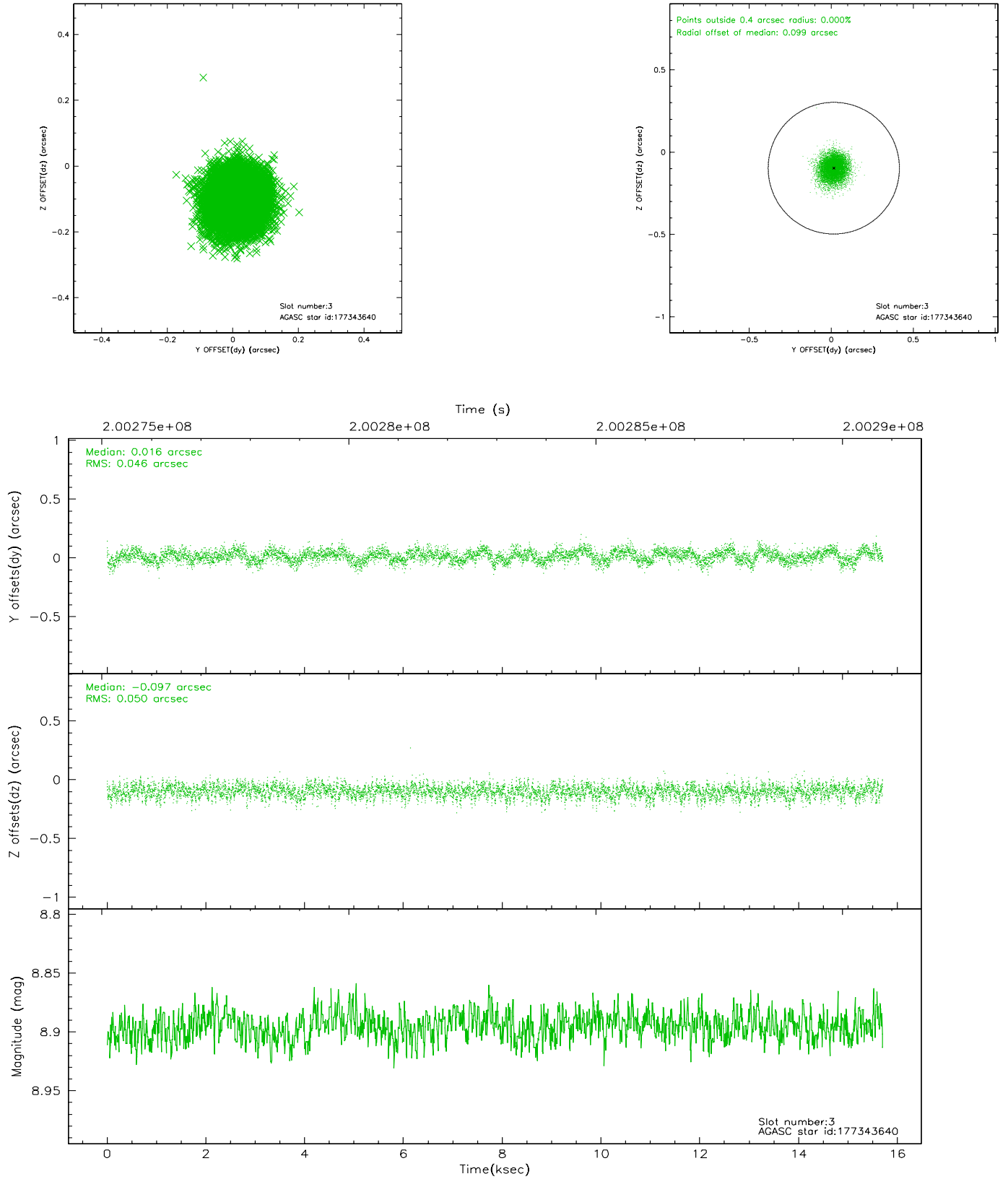


Slot Statistics

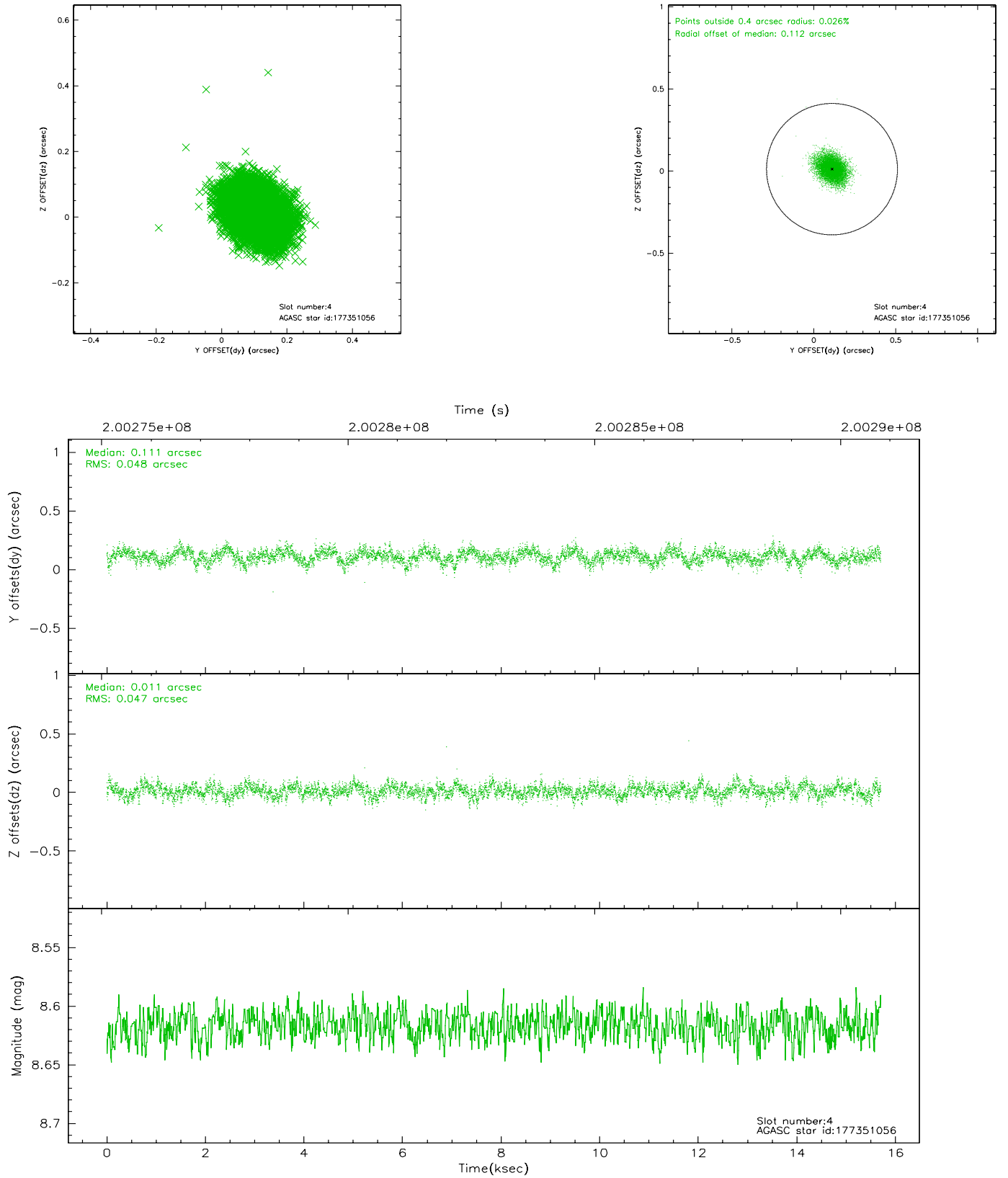
| slot | status | id | mag | n_pts | med_dy | med_dz | dr1 | dr2 | ra | dec | mean_y | mean_z |
|------|--------|-----------|------|-------|--------|--------|-------|-------|------------|-----------|----------|----------|
| 0 | FID | ACIS-S-2 | 7.10 | 3830 | -0.049 | 0.001 | 0.010 | 0.027 | 0.000000 | 0.000000 | -759.41 | -1731.76 |
| 1 | FID | ACIS-S-4 | 7.20 | 3827 | 0.043 | 0.024 | 0.008 | 0.039 | 0.000000 | 0.000000 | 2153.79 | 176.50 |
| 2 | FID | ACIS-S-5 | 7.23 | 3830 | -0.024 | -0.015 | 0.008 | 0.018 | 0.000000 | 0.000000 | -1811.90 | 170.39 |
| 3 | GUIDE | 177343640 | 8.90 | 7660 | 0.016 | -0.097 | 0.073 | 0.117 | 107.248573 | 20.055975 | 249.87 | -1949.70 |
| 4 | GUIDE | 177351056 | 8.62 | 7661 | 0.111 | 0.011 | 0.071 | 0.118 | 107.580697 | 19.999825 | 290.16 | -809.13 |
| 5 | GUIDE | 177352208 | 7.97 | 7660 | 0.120 | 0.044 | 0.048 | 0.077 | 107.641174 | 19.803037 | 961.96 | -504.74 |
| 6 | GUIDE | 177473832 | 8.28 | 7660 | -0.168 | 0.095 | 0.060 | 0.099 | 108.284806 | 20.563918 | -2064.78 | 1248.24 |
| 7 | GUIDE | 177343336 | 8.78 | 7660 | -0.078 | -0.050 | 0.070 | 0.113 | 107.095912 | 20.018287 | 456.54 | -2441.50 |

2.4 Star Slots

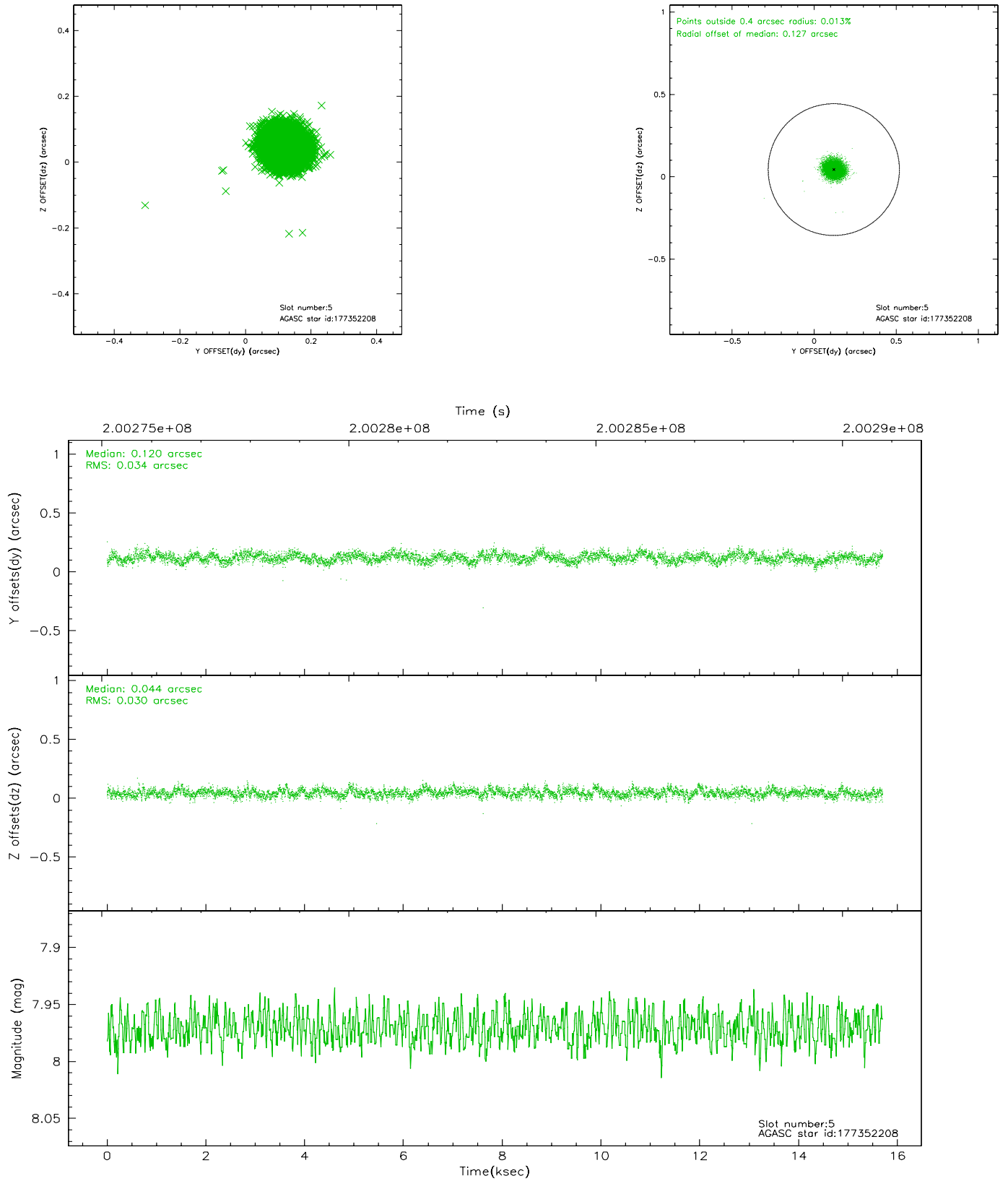
2.4.1 Slot 3



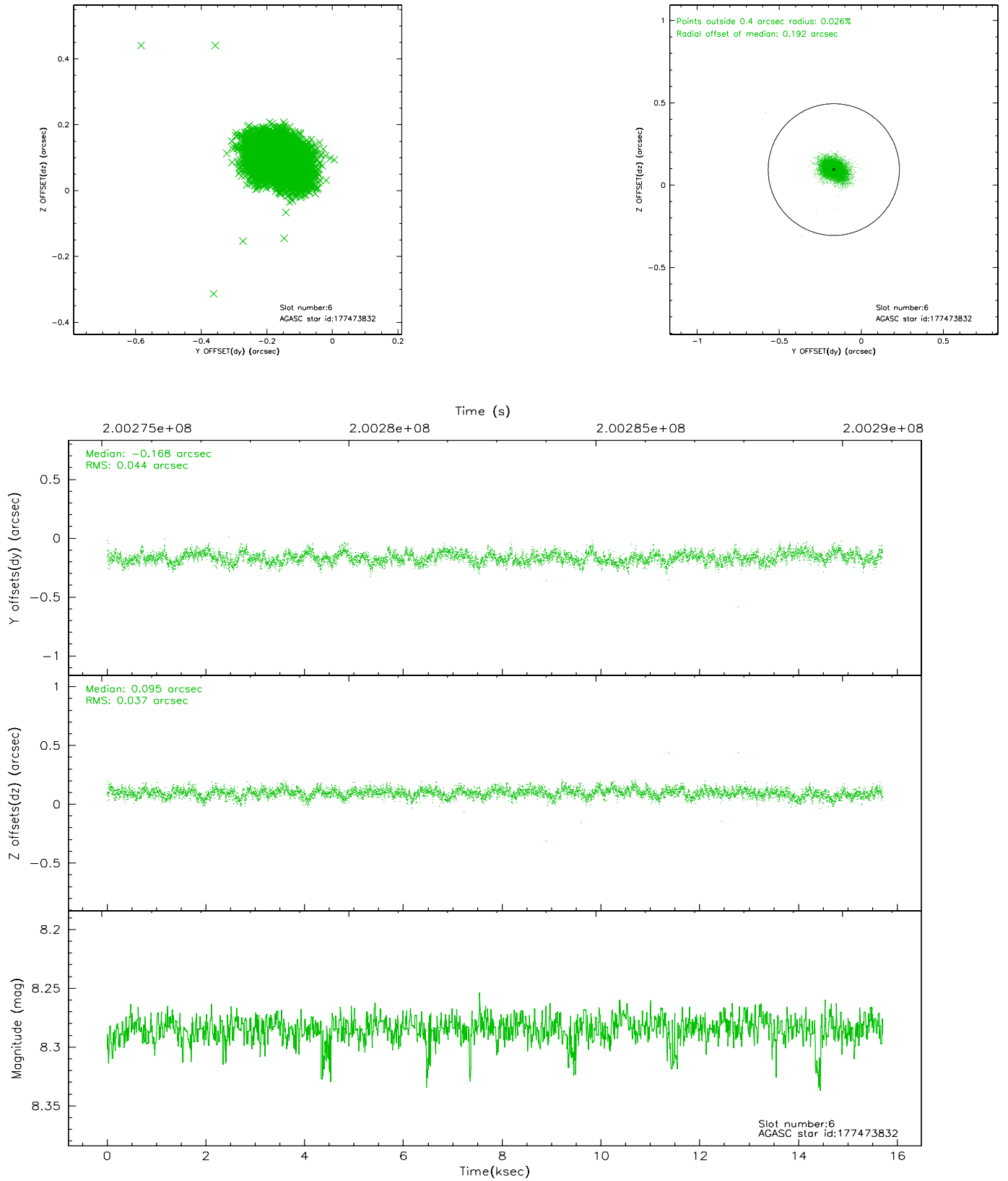
2.4.2 Slot 4



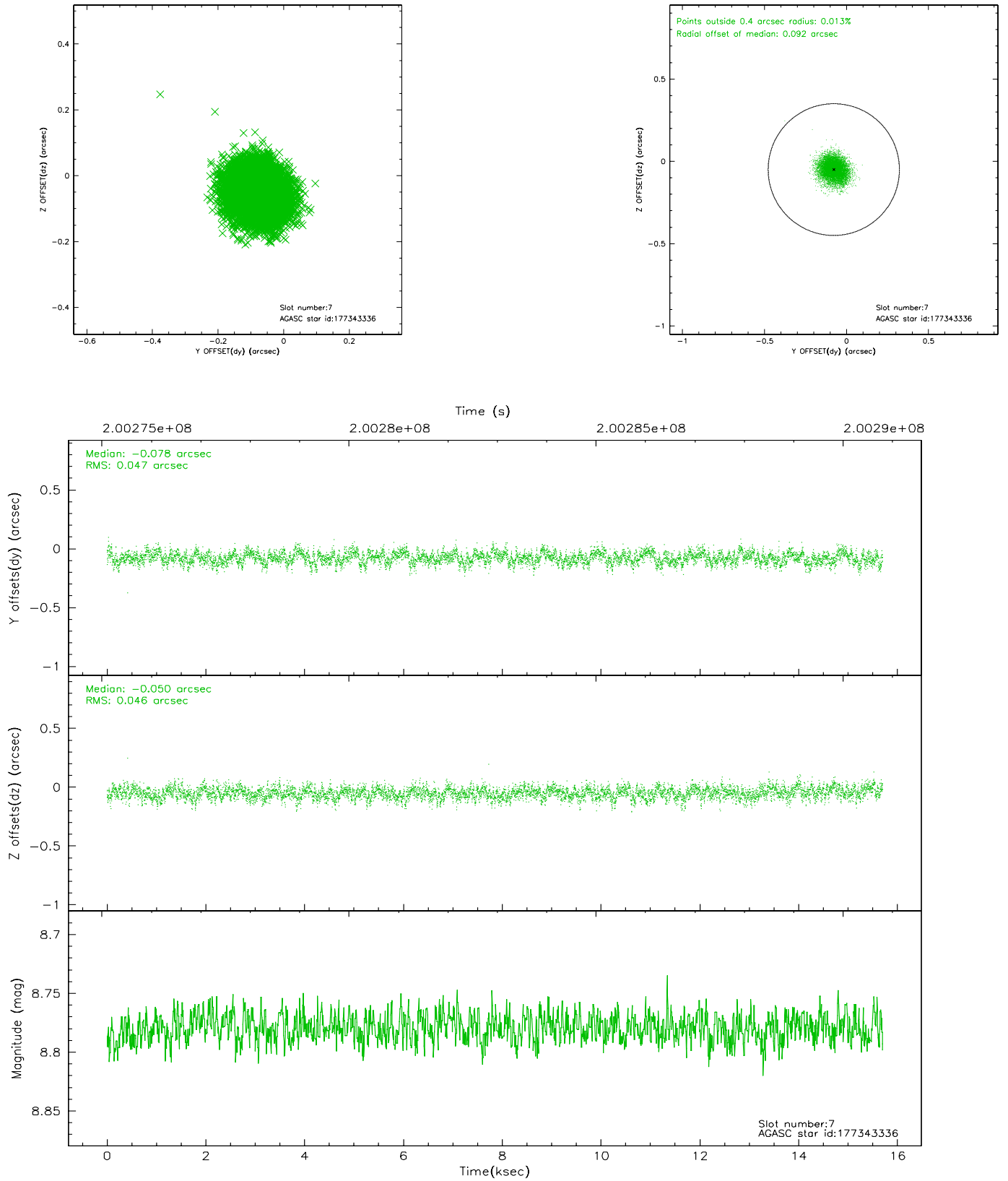
2.4.3 Slot 5



2.4.4 Slot 6

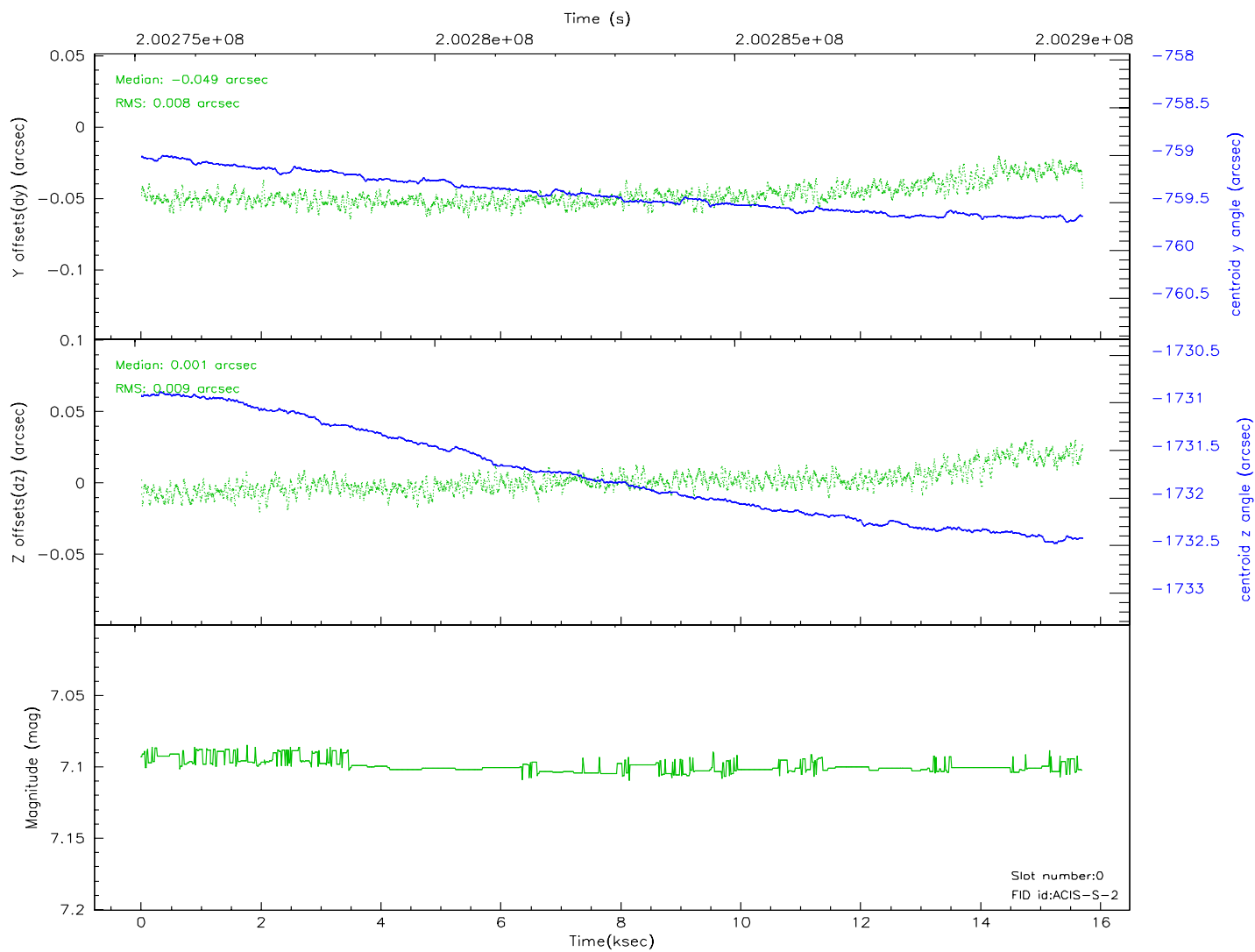
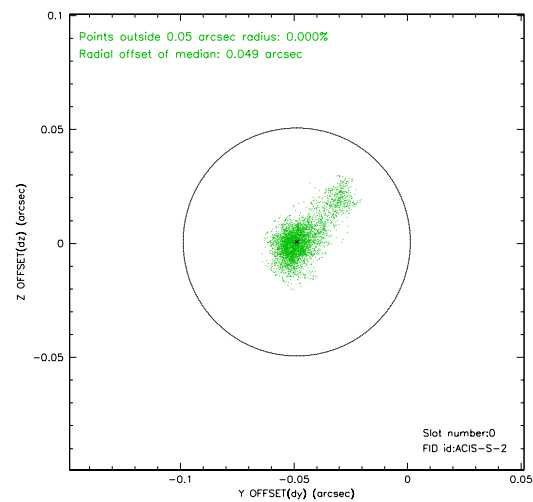
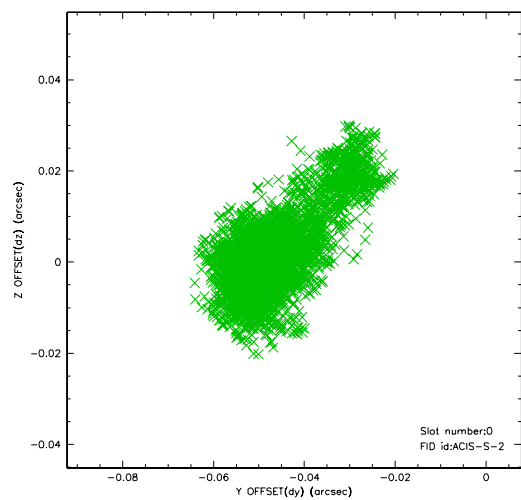


2.4.5 Slot 7

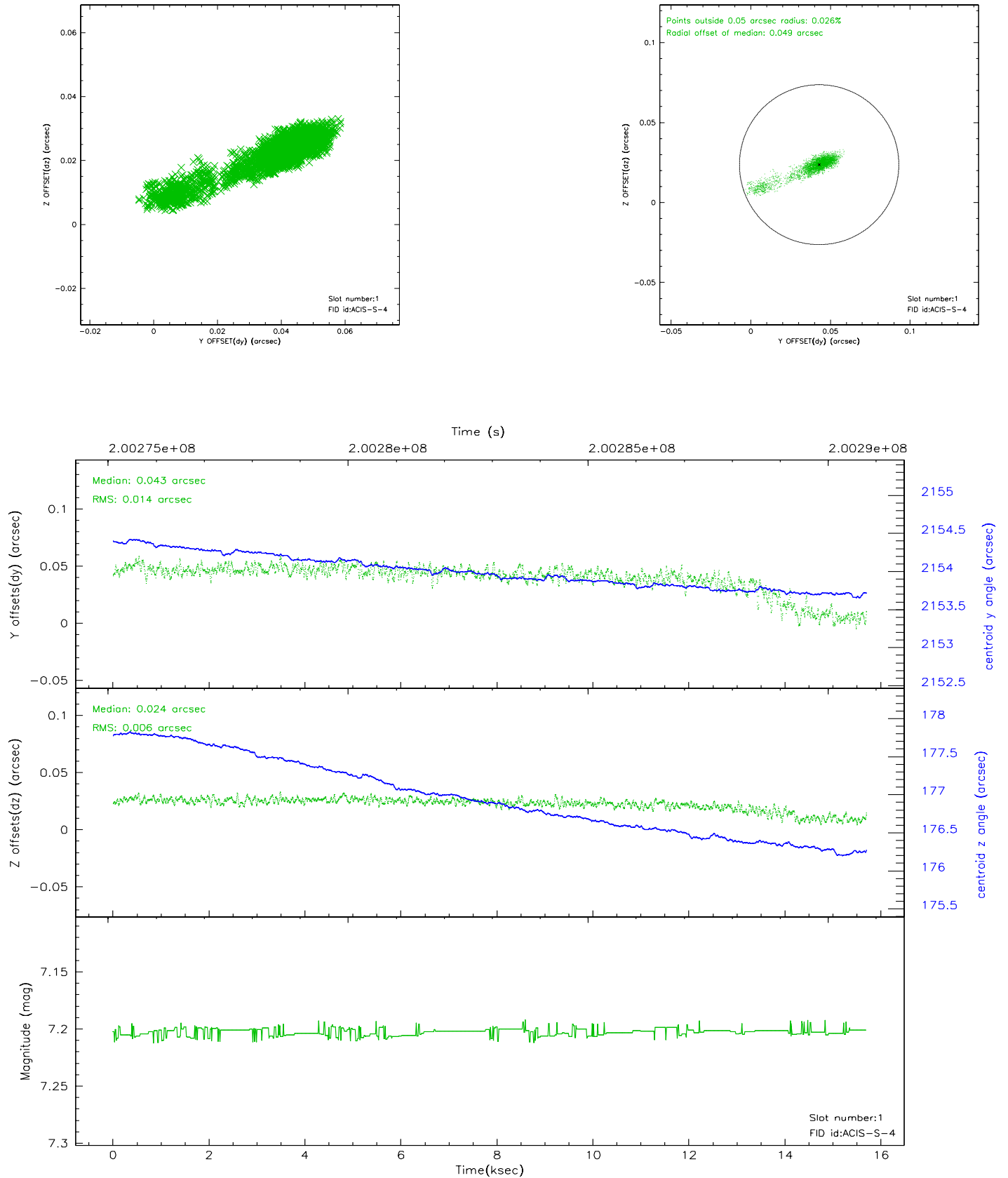


2.5 FID Slots

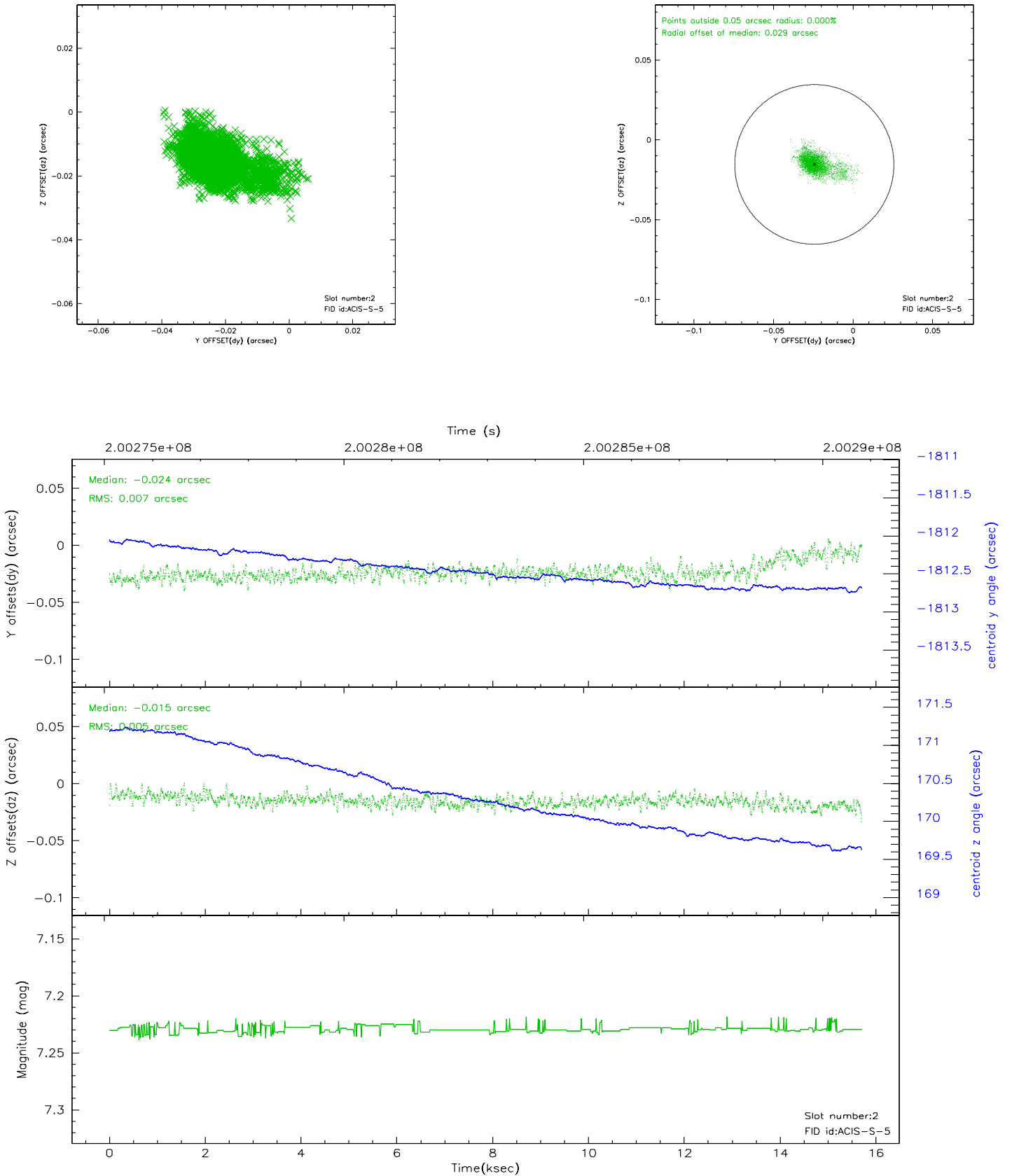
2.5.1 Slot 0



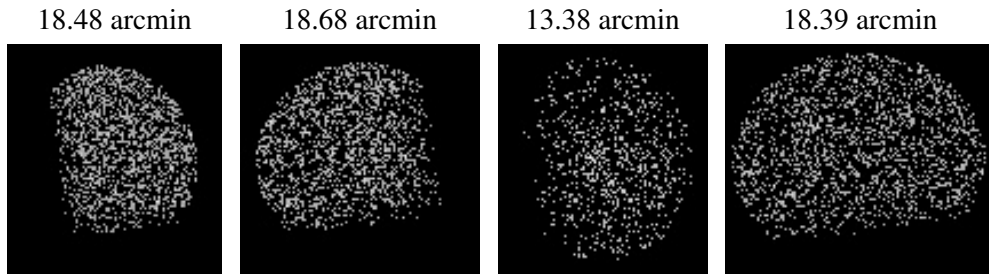
2.5.2 Slot 1



2.5.3 Slot 2



3 Point Sources



A Summary

A.1 Status

| | |
|----------------------------|------------|
| V&V Scientist | Jen Lauer |
| V&V Date (YYYY-MM-DD) | 2006.05.19 |
| V&V Edition | 1 |
| V&V Disposition and Status | OK |
| V&V Charge Time | 15.196 |

A.2 Comments