

V&V Reference Report

L2 ASCDS Version : 8.4.5

Observation 4890 - L2 Version 3
Chandra X-Ray Center

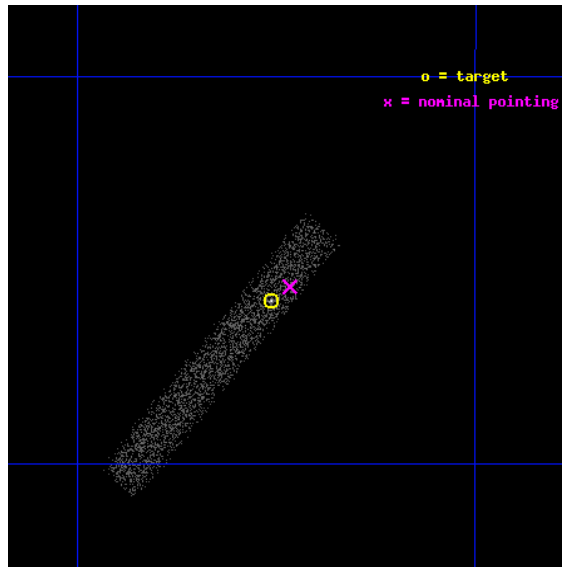
L2 Processing Date : Nov 13 2012

Contents

1	Front	2
2	OBI	3
2.1	OBI	3
2.1.1	Images	3
2.1.2	Bias	3
2.1.3	Parameters	4
2.1.4	Events	4
2.2	Compared Parameters	5
2.3	Aspect	6
2.4	Star Slots	9
2.4.1	Slot 3	9
2.4.2	Slot 4	10
2.4.3	Slot 5	11
2.4.4	Slot 6	12
2.4.5	Slot 7	13
2.5	FID Slots	14
2.5.1	Slot 0	14
2.5.2	Slot 1	15
2.5.3	Slot 2	16
A	Summary	17
A.1	Status	17
A.2	Comments	17

1 Front

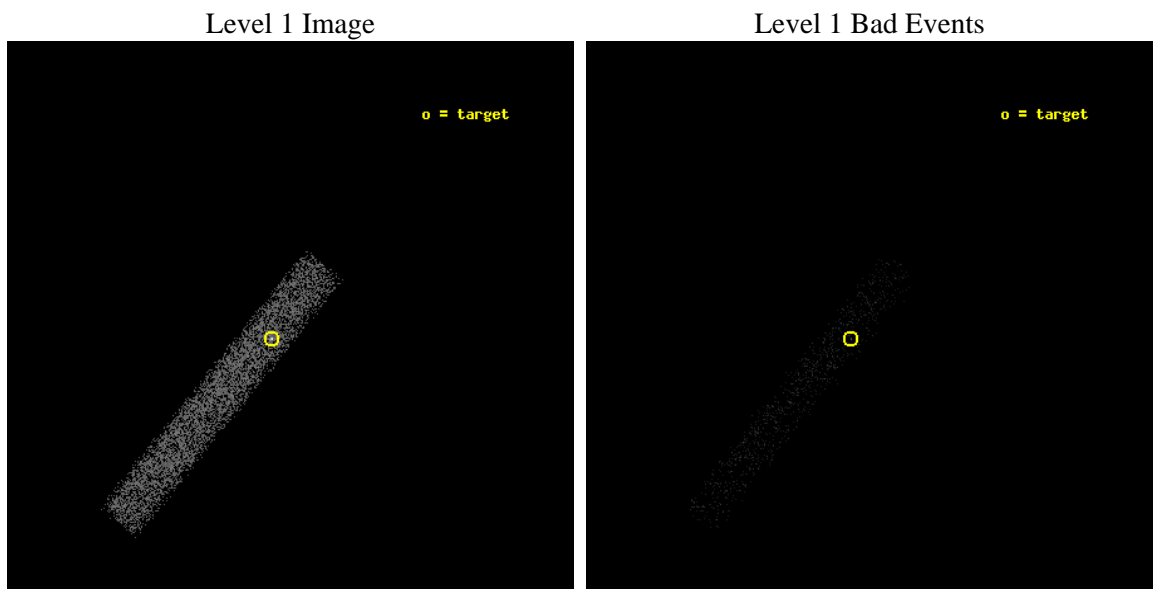
seq_num	700972	Sequence number
obs_id	4890	Observation id
title	Continuing a Flux-limited Survey for X-ray Emission from Radio Jets	
observer	Dr. Herman Marshall	Principal investigator
object	2123-463	Source name
dtcycle	0	
cycle	P	events from which exps? Prim/Second/Both
ra_targ	321.627917	Observer's specified target RA [deg]
dec_targ	-46.096528	Observer's specified target Dec [deg]
ra_nom	321.61652664665	Nominal RA [deg]
dec_nom	-46.090694281611	Nominal Dec [deg]
roll_nom	128.88961858081	Nominal Roll [deg]
revision	3	Processing version of data
ontime	7137.2001063228	Sum of GTIs [s]
livetime	6473.0637641237	Livetime [s]
ontime7	7137.2001063228	Sum of GTIs [s]
l2events	4461	Number of level 2 events



2 OBI

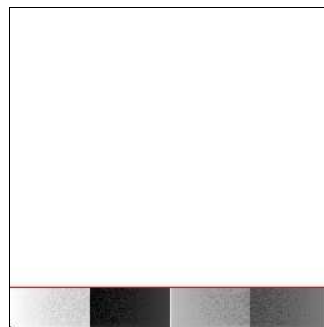
2.1 OBI

2.1.1 Images



2.1.2 Bias

Chip 7



2.1.3 Parameters

obi_num	0	Obi number	sched_exp_time	7000.000000	[s] Scheduled observation exposure time
ascdsver	8.4.5	Processing system revision	ontime	7137.2001063228	Sum of GTIs [s]
caldsver	4.5.2	 	ontime7	7137.2001063228	Sum of GTIs [s]
date	2012-11-14T00:11:29	Date and time of file creation	l1events	10618	Number of level 1 events
revision	3	Processing version of data			

2.1.4 Events

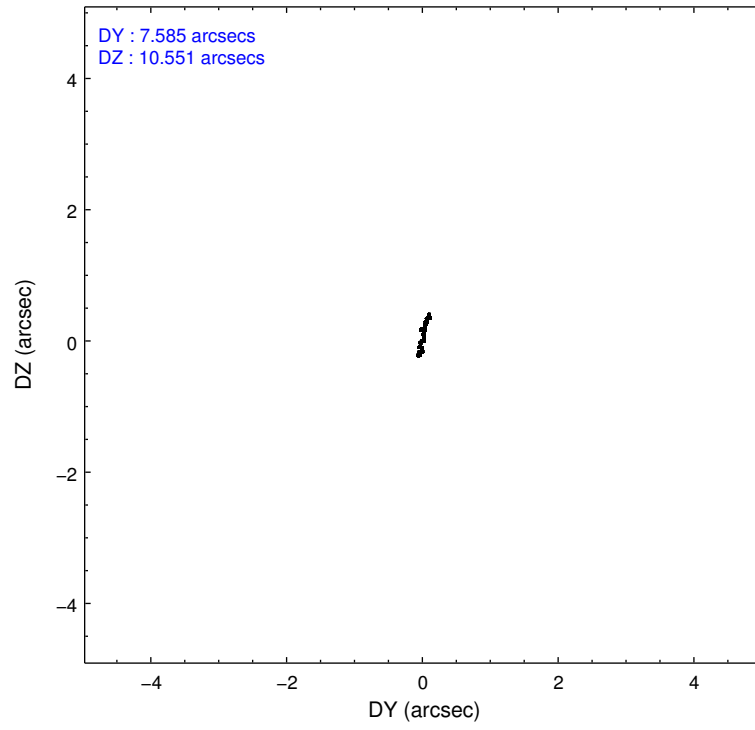
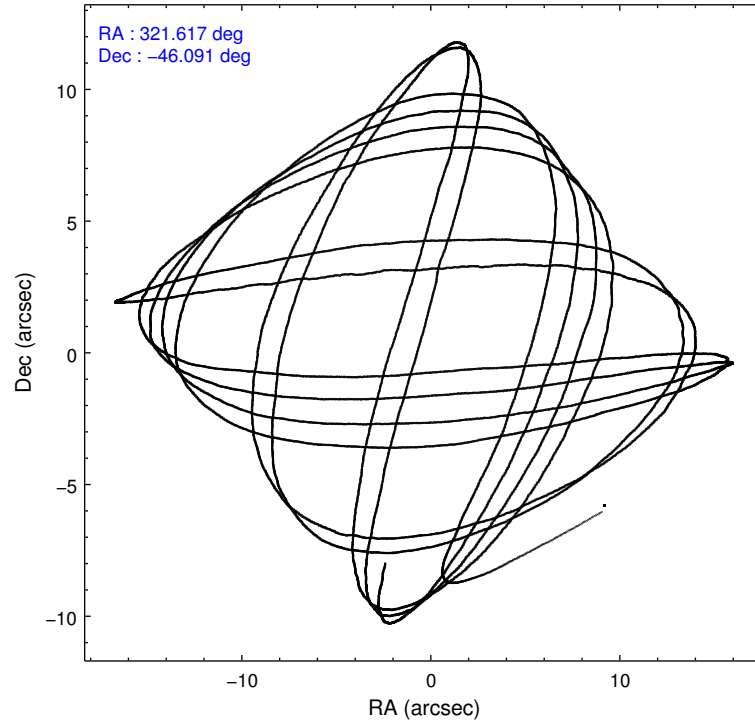
	ccd 7
level 1 events	10618
rejected events	6016
rejected %	56%

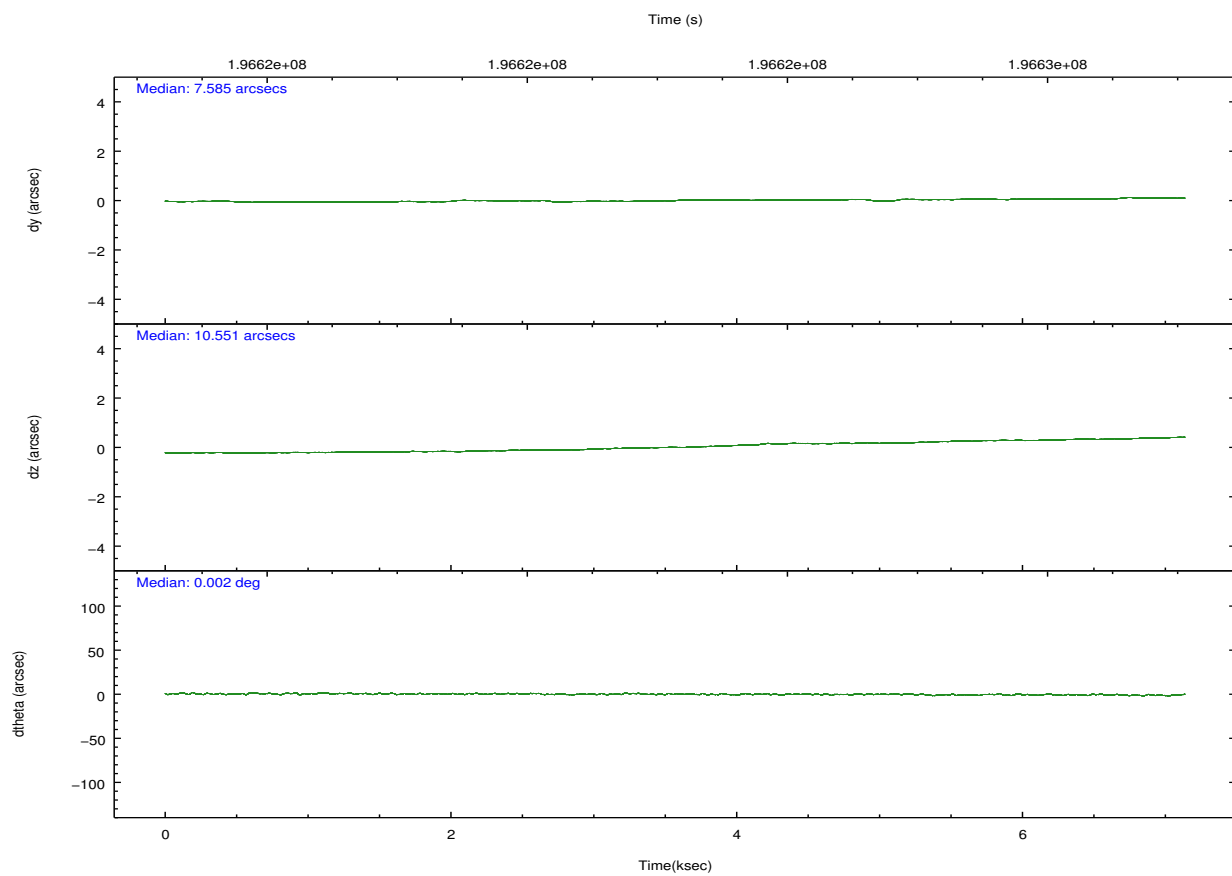
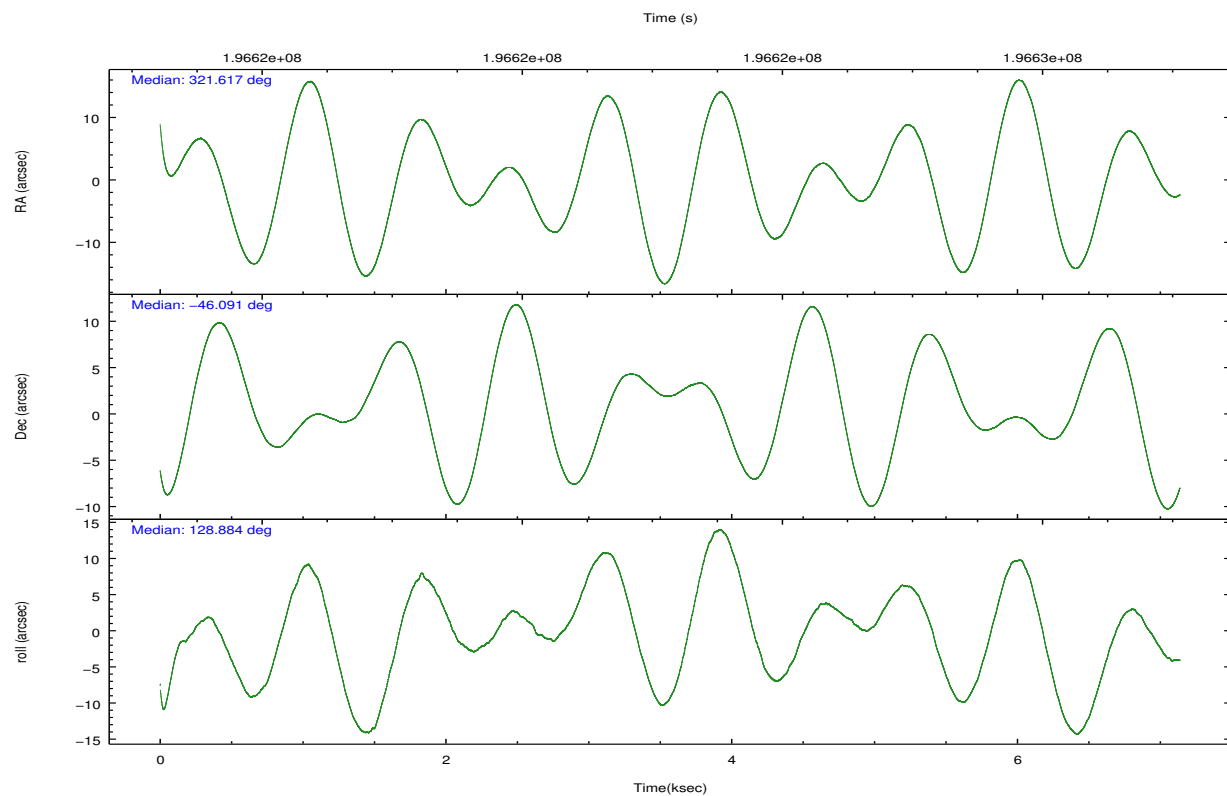
	ccd 7
grade 0 events	617
	5%
grade 1 events	7
	0%
grade 2 events	983
	9%
grade 3 events	666
	6%
grade 4 events	611
	5%
grade 5 events	926
	8%
grade 6 events	2245
	21%
grade 7 events	4563
	42%

2.2 Compared Parameters

Parameter	Planned	Actual	Parameter	Planned	Actual
Instrument	ACIS	ACIS	Obspar format version number	7	7
Detector	ACIS-7	ACIS-7	Obspar file type	PREDICTED	ACTUAL
Grating	NONE	NONE	Obspar update status	NONE	UPDATED
Data mode	FAINT	FAINT	Number of optional ACIS chips dropped	0	0
Observation mode	POINTING	POINTING	On-chip summing requested	N	N
[deg] Pointing RA	321.653340	321.6165266466508	Subarray requested	CUSTOM	1/8
[deg] Pointing Dec	-46.100114	-46.09069428161094	Subarray start row	1	1
[deg] Pointing Roll	128.759538	128.8896185808083	Subarray row count	128	128
[mm] SIM focus pos	-0.684267	-0.6828225247311905	Alternating exposures requested	N	N
[mm] SIM defocus	0	0.001444936568705701	[s] Primary exposure time	0.000000	0.4
[mm] SIM translation stage pos	-178.632523	-178.6370735452349			
[mm] SIM translation stage offset	-11.5	-11.49544903777291			
[s] Observation start time (MET)	196619706.184000	196618561.45538			
Observation start date	2004-03-25T16:34:02	2004-03-25T16:16:01			
[s] Observation end time (MET)	196626706.184000	196627412.33077			
Observation end date	2004-03-25T18:30:42	2004-03-25T18:43:32			
Read mode	TIMED	TIMED			

2.3 Aspect



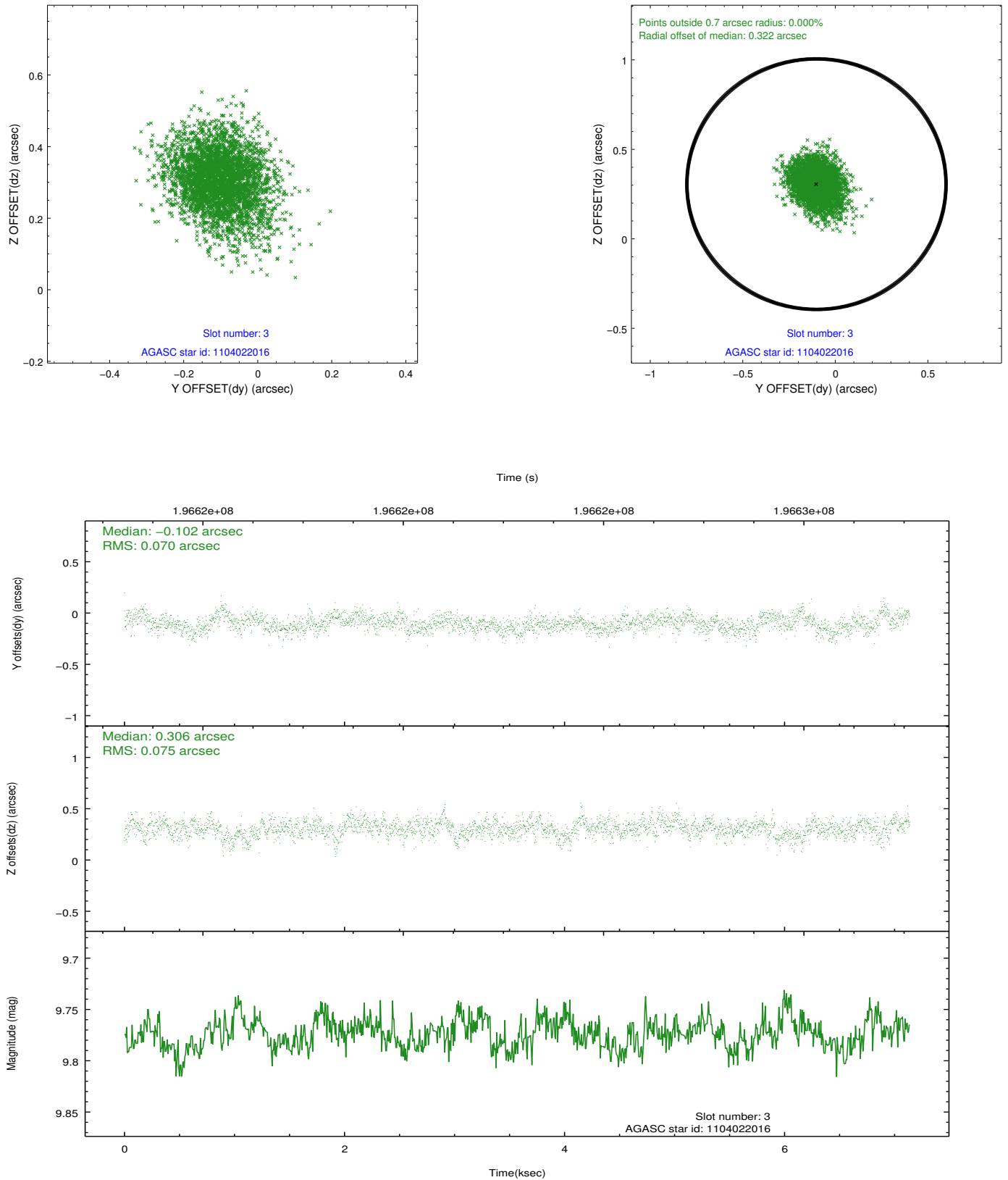


Slot Statistics

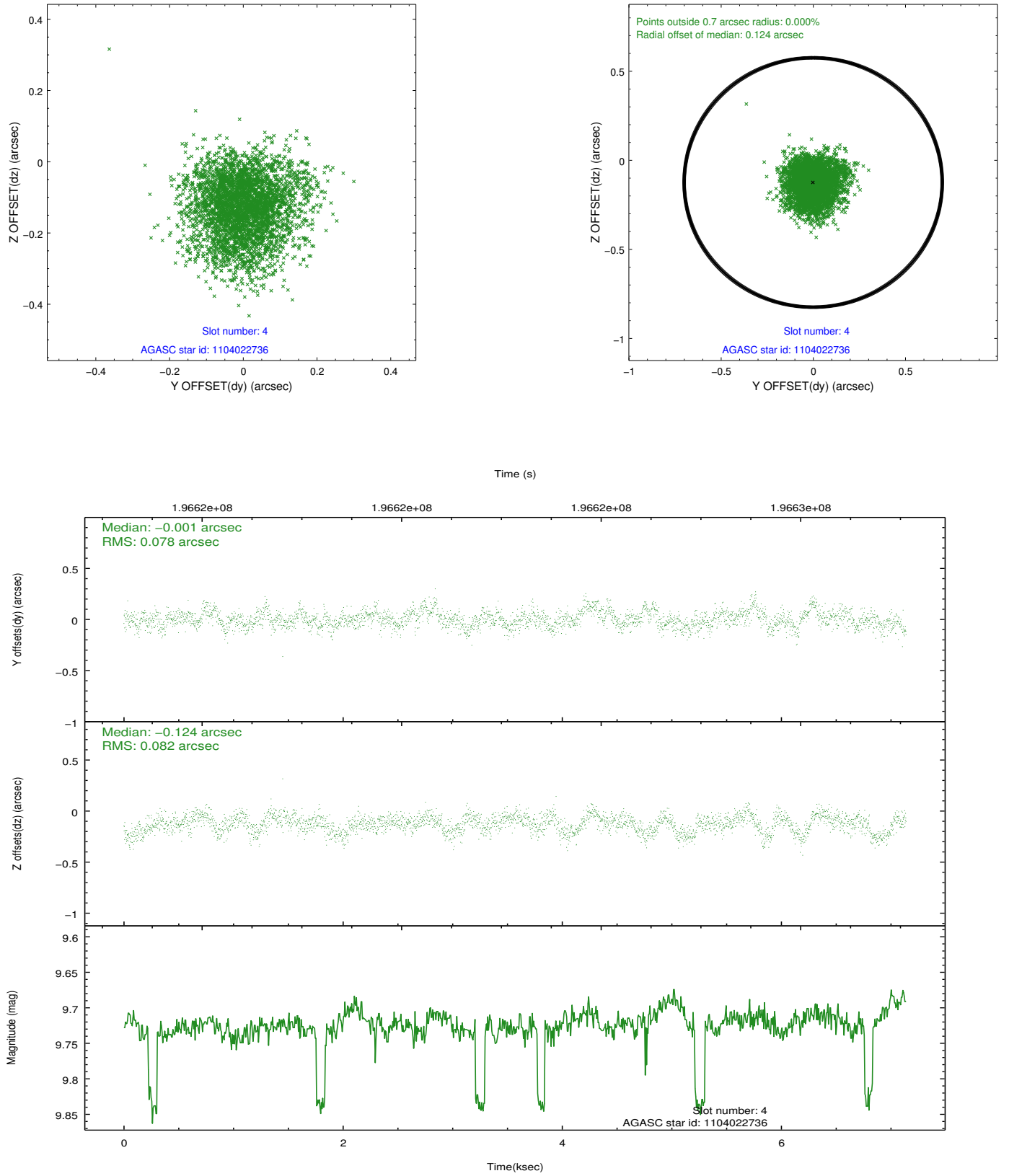
slot	status	id	mag	n_pts	med_dy	med_dz	dr1	dr2	ra	dec	mean_y	mean_z
0	FID	ACIS-S-2	7.09	1741	0.092	-0.318	0.014	0.026	0.000000	0.000000	-759.61	-1968.72
1	FID	ACIS-S-5	7.24	1742	-0.056	0.274	0.009	0.015	0.000000	0.000000	-1813.05	-67.04
2	FID	ACIS-S-6	7.42	1741	-0.063	0.050	0.008	0.013	0.000000	0.000000	401.23	577.33
3	GUIDE	1104022016	9.77	3481	-0.102	0.306	0.107	0.181	321.918335	-45.528777	1185.25	-1807.12
4	GUIDE	1104022736	9.72	3460	-0.001	-0.124	0.121	0.196	321.054358	-45.967505	1306.52	872.92
5	GUIDE	1104025192	8.96	3481	0.137	0.208	0.081	0.133	322.290908	-46.363651	-1735.52	-636.80
6	GUIDE	1104027304	6.69	3483	-0.042	-0.338	0.081	0.132	321.086840	-46.614708	-572.08	2254.71
7	GUIDE	1104022232	8.45	3481	0.007	-0.050	0.081	0.123	321.421143	-46.170139	165.35	610.72

2.4 Star Slots

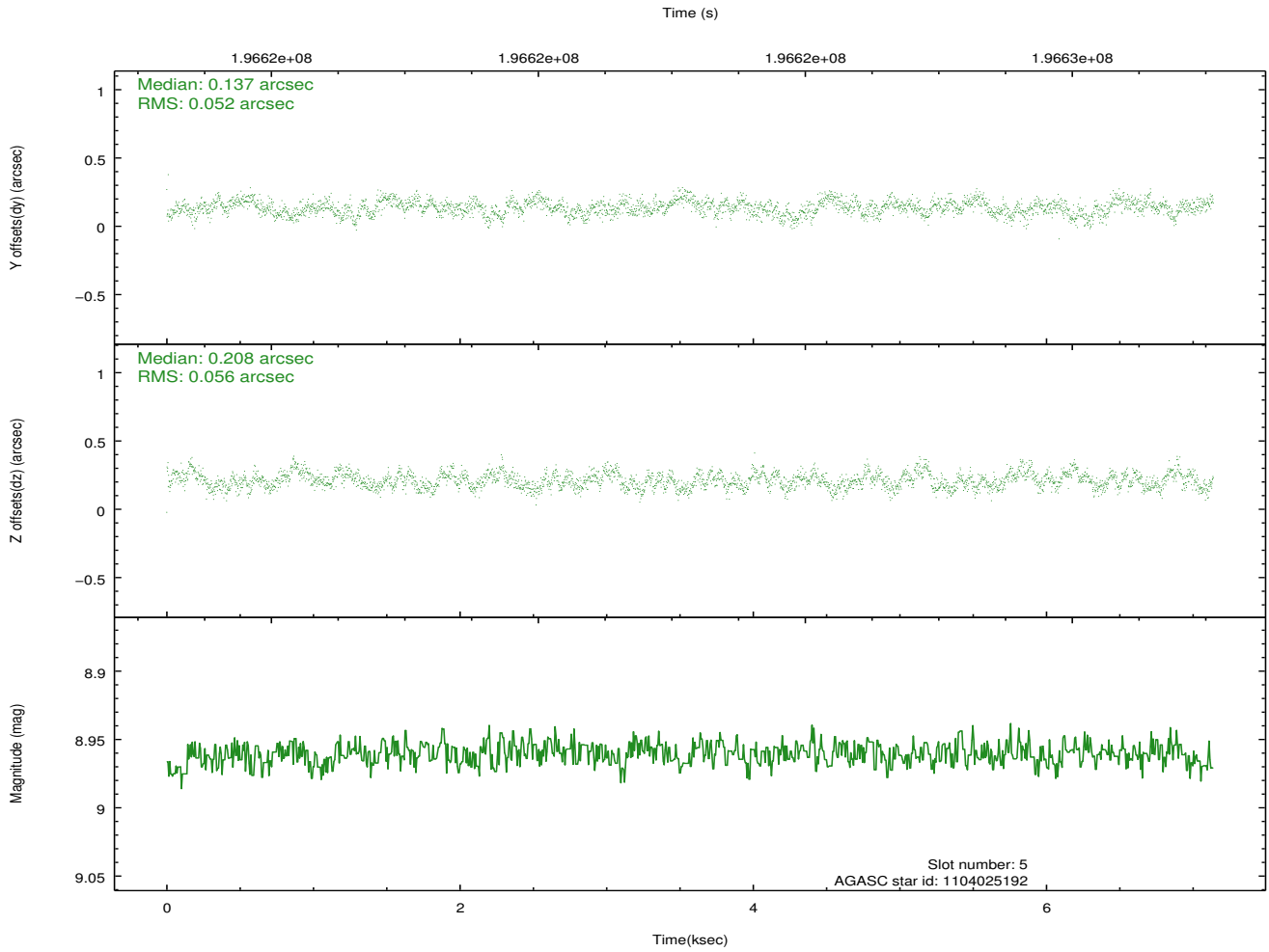
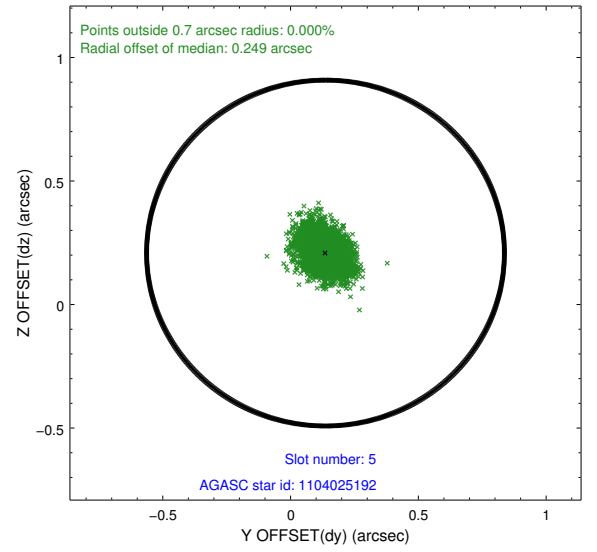
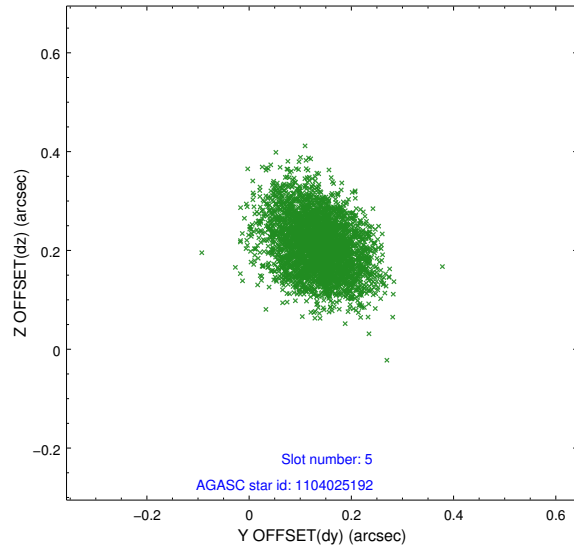
2.4.1 Slot 3



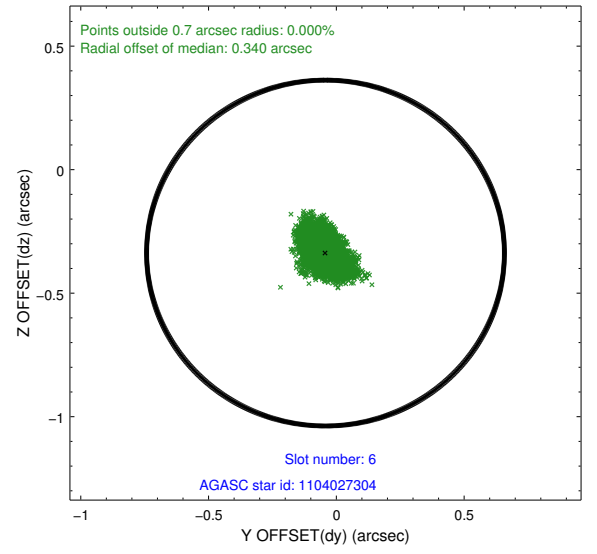
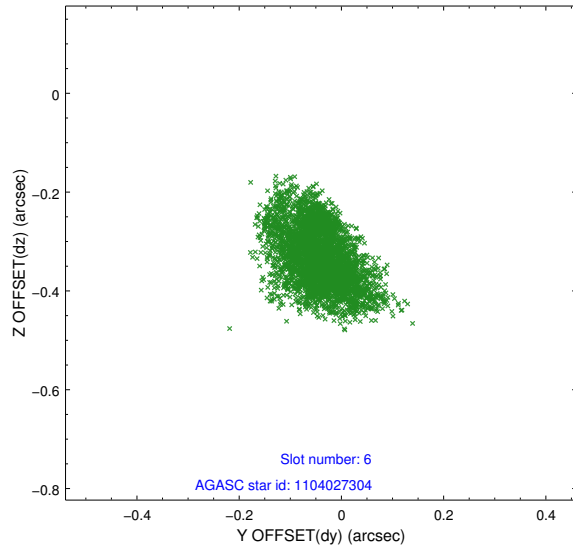
2.4.2 Slot 4



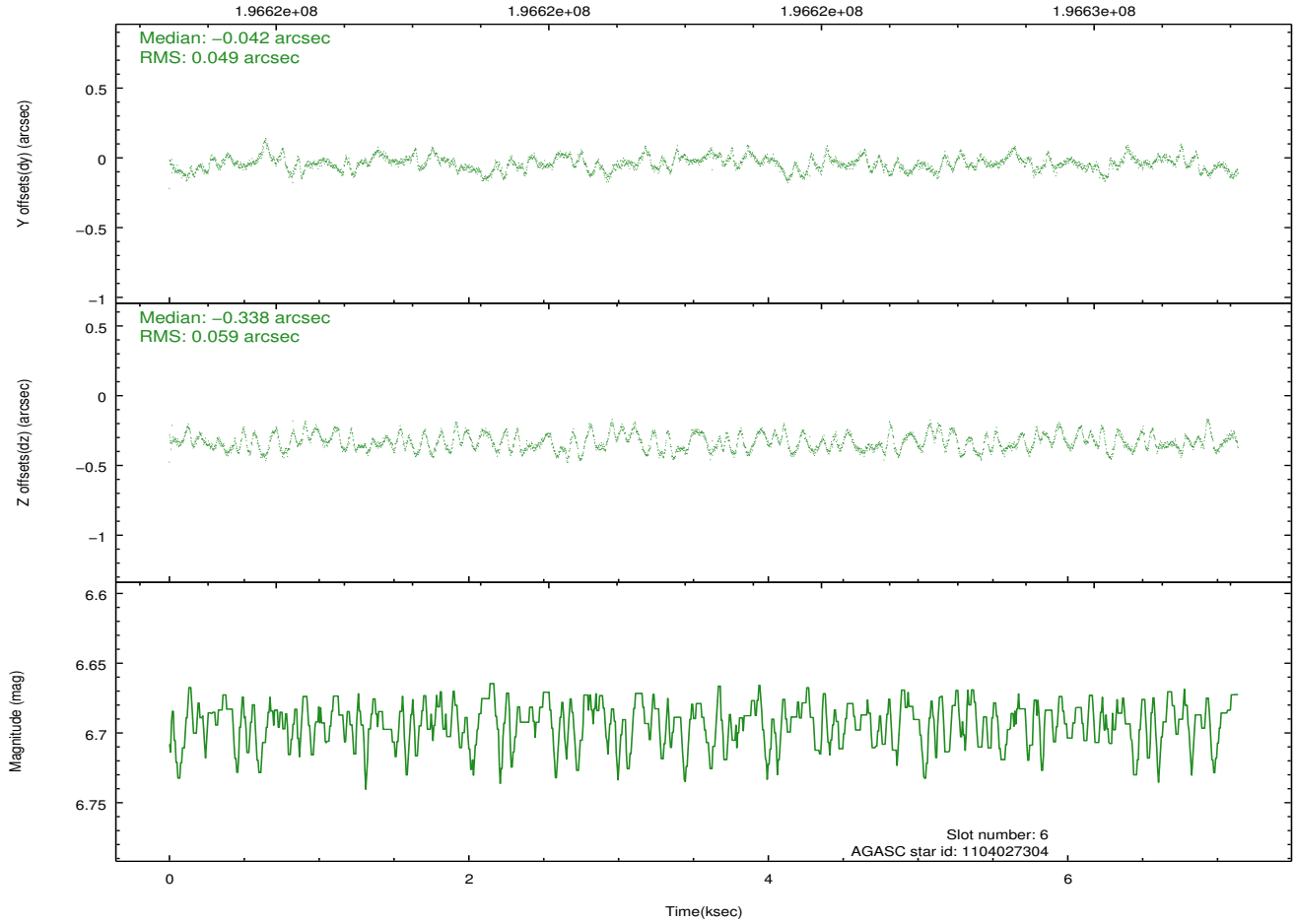
2.4.3 Slot 5



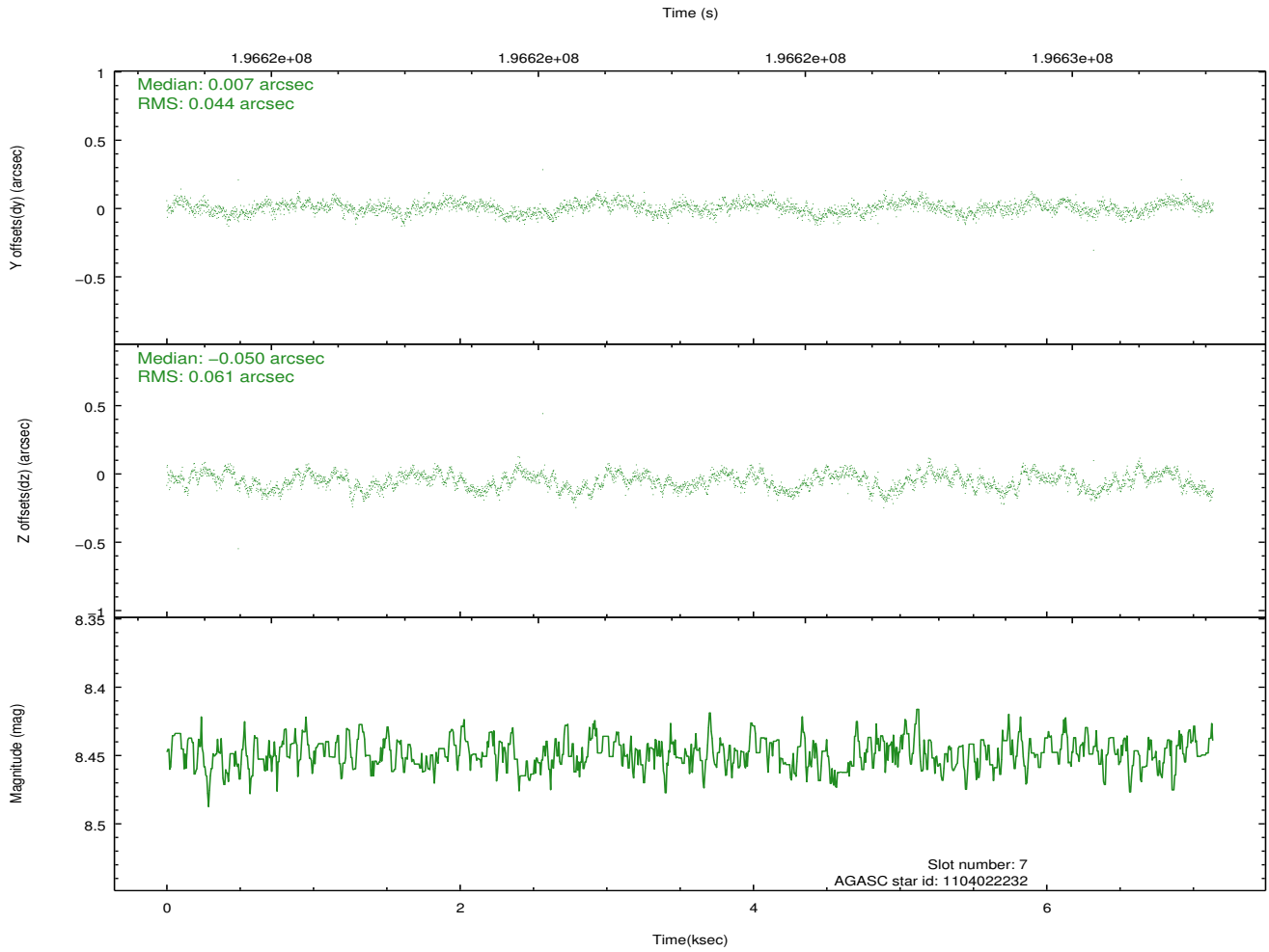
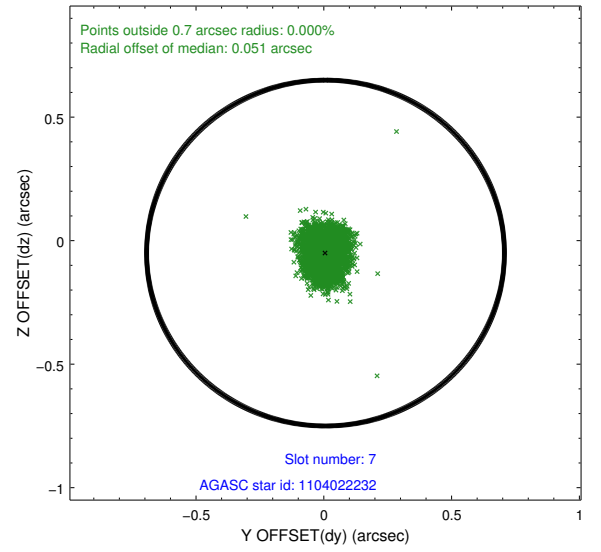
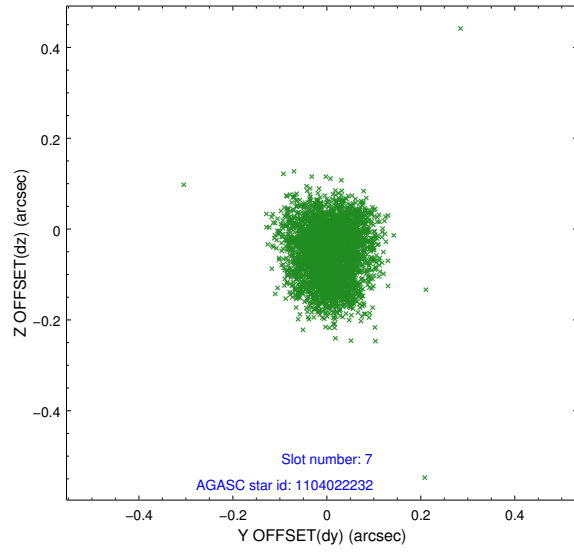
2.4.4 Slot 6



Time (s)

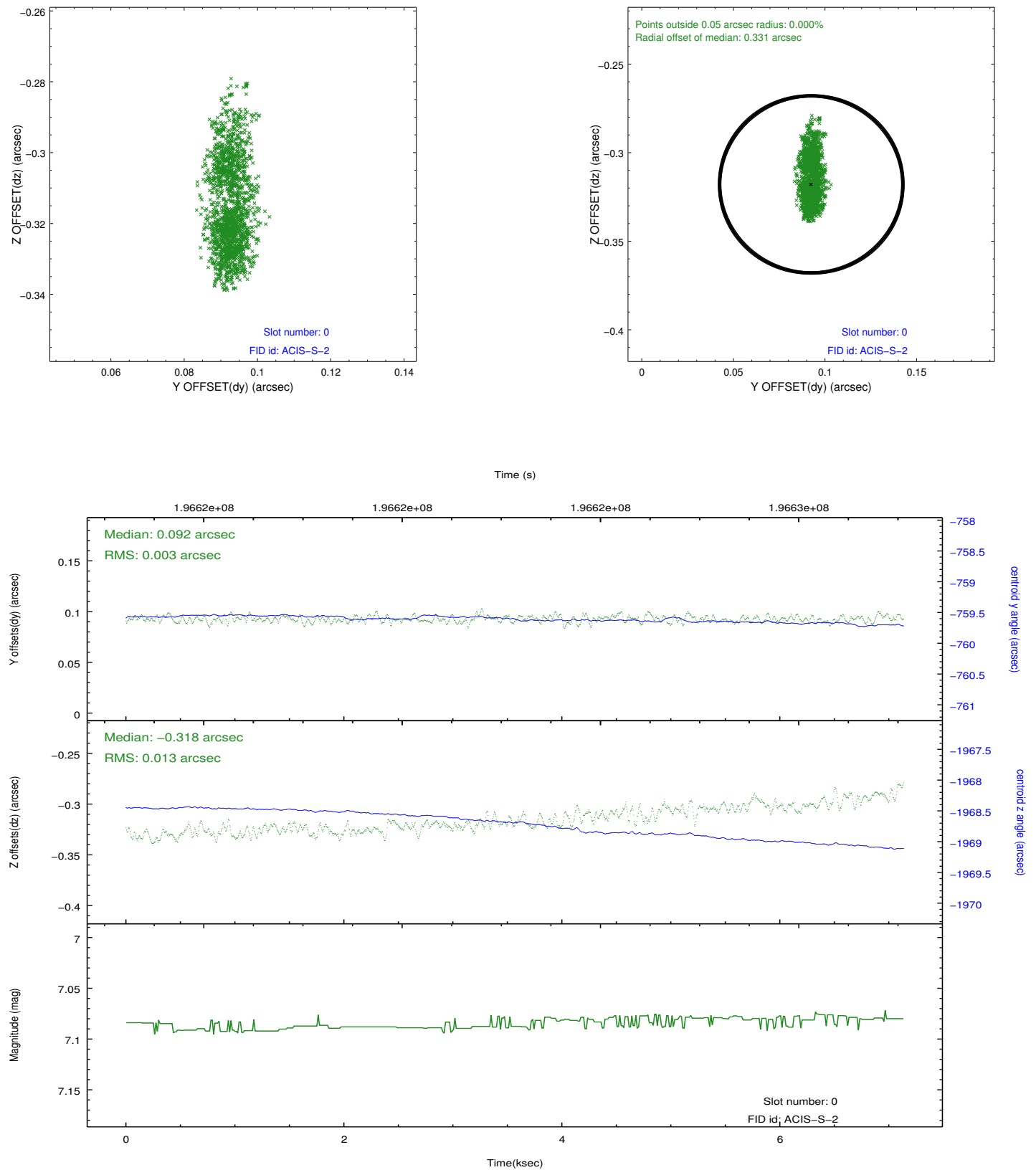


2.4.5 Slot 7

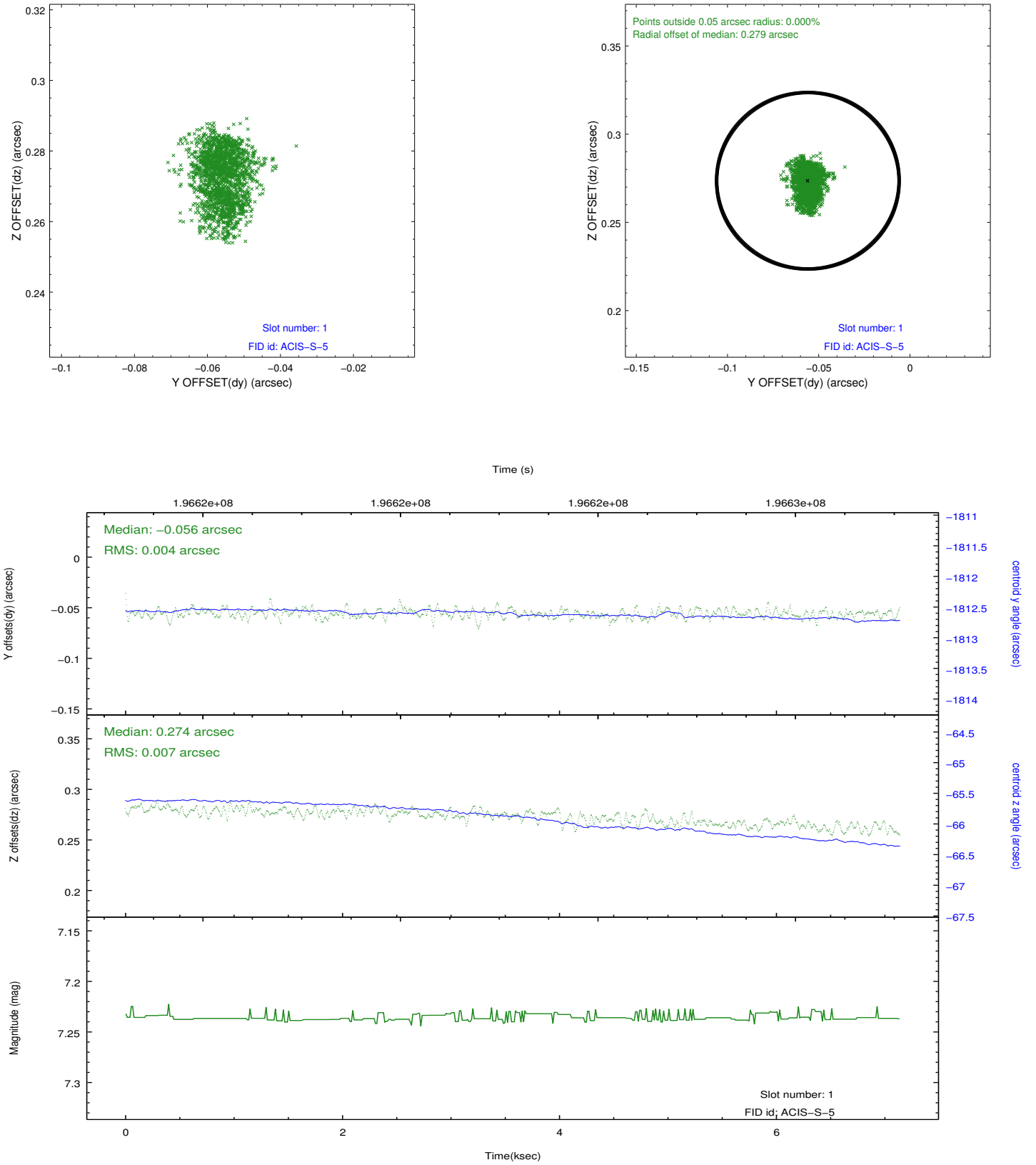


2.5 FID Slots

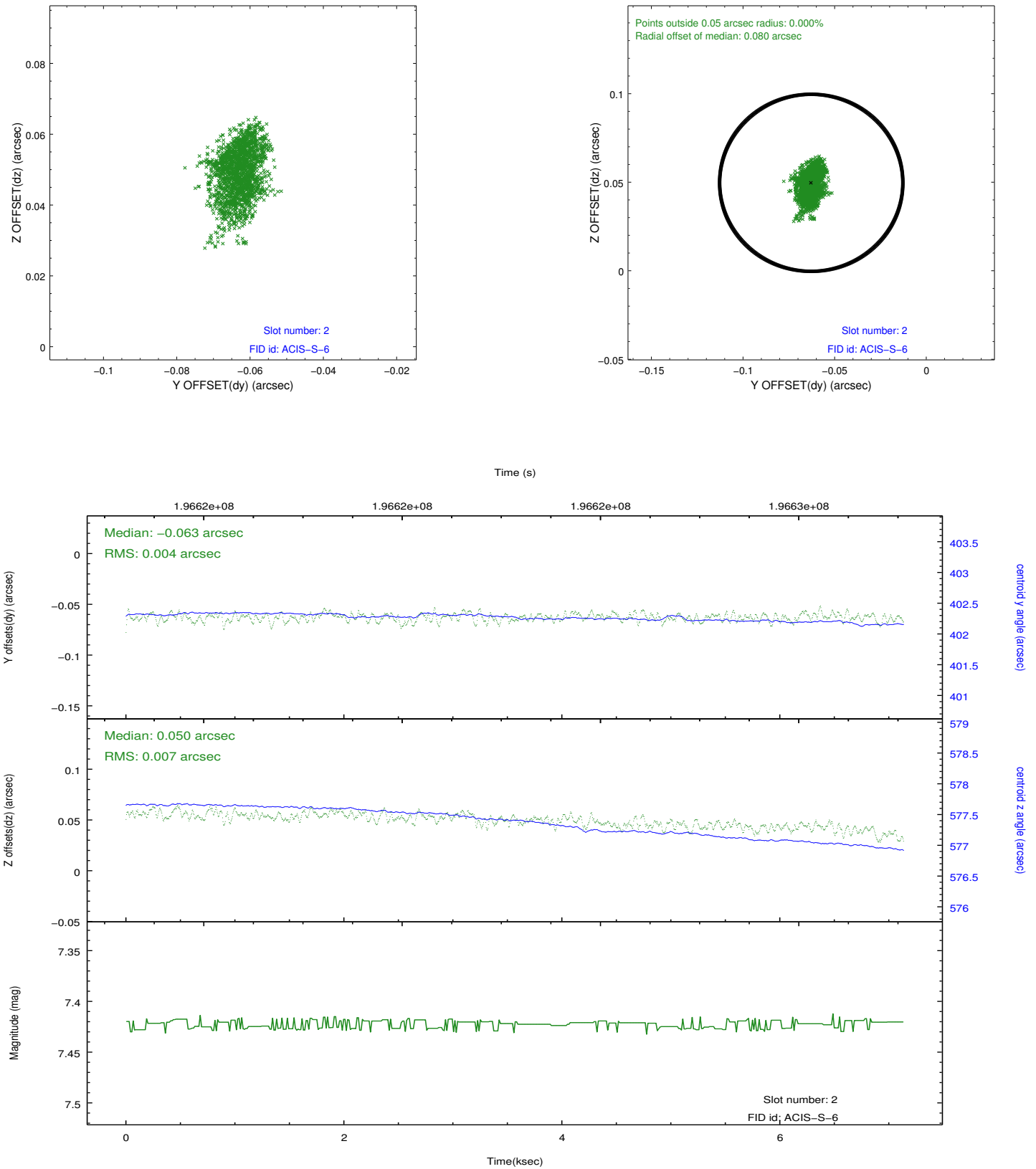
2.5.1 Slot 0



2.5.2 Slot 1



2.5.3 Slot 2



A Summary

A.1 Status

V&V Scientist	Beth Sundheim
V&V Date (YYYY-MM-DD)	2012.12.12
V&V Edition	1
V&V Disposition and Status	OK
V&V Charge Time	7.137

A.2 Comments