

# V&V Reference Report

## L2 ASCDS Version : 8.5

Observation 4887 - L2 Version 4  
Chandra X-Ray Center

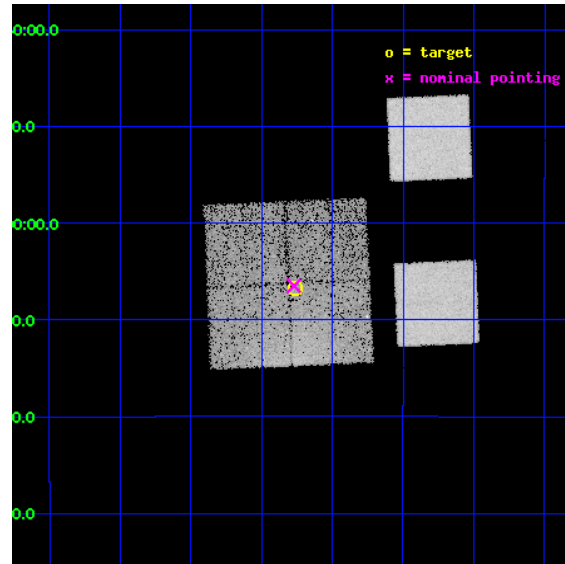
L2 Processing Date : Dec 8 2012

## Contents

<b>1</b>	<b>Front</b>	<b>2</b>
<b>2</b>	<b>OBI</b>	<b>3</b>
2.1	OBI . . . . .	3
2.1.1	Images . . . . .	3
2.1.2	Bias . . . . .	3
2.1.3	Parameters . . . . .	4
2.1.4	Events . . . . .	4
2.2	Compared Parameters . . . . .	5
2.3	Aspect . . . . .	6
2.4	Star Slots . . . . .	9
2.4.1	Slot 3 . . . . .	9
2.4.2	Slot 4 . . . . .	10
2.4.3	Slot 5 . . . . .	11
2.4.4	Slot 6 . . . . .	12
2.4.5	Slot 7 . . . . .	13
2.5	FID Slots . . . . .	14
2.5.1	Slot 0 . . . . .	14
2.5.2	Slot 1 . . . . .	15
2.5.3	Slot 2 . . . . .	16
<b>A</b>	<b>Summary</b>	<b>17</b>
A.1	Status . . . . .	17
A.2	Comments . . . . .	17

# 1 Front

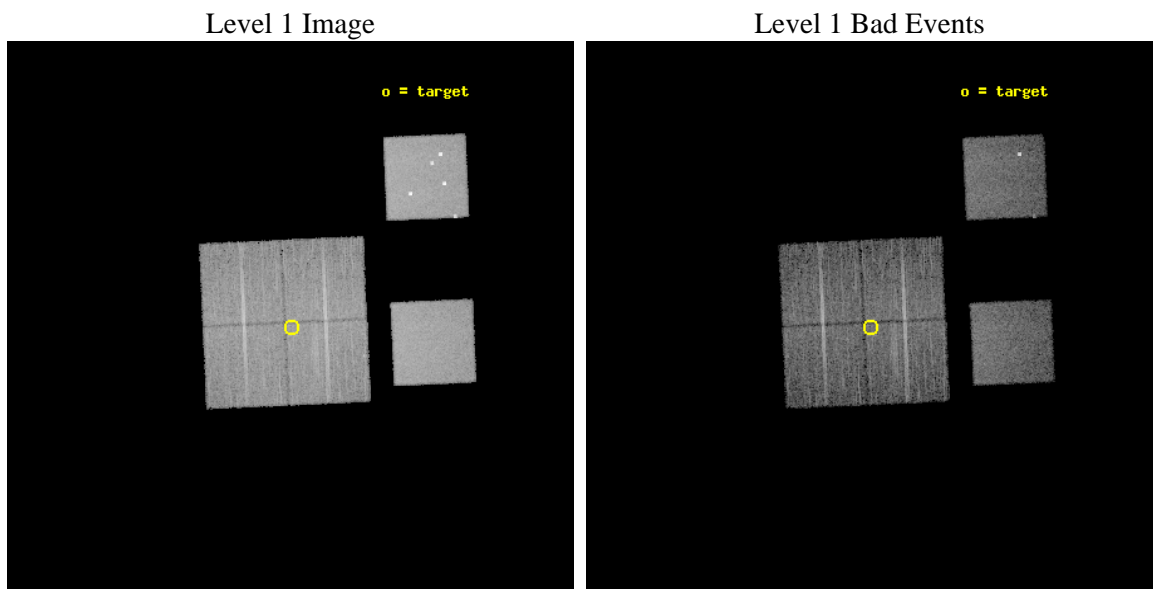
seq_num	700969	Sequence number
obs_id	4887	Observation id
title	AGN in low-redshift Clusters of Galaxies	Proposal title
observer	Prof. Paul Martini	Principal investigator
object	Abell85-P7	Source name
dtcycle	0	&#160
cycle	P	events from which exps? Prim/Second/Both
ra_targ	10.440833	Observer's specified target RA [deg]
dec_targ	-9.1125	Observer's specified target Dec [deg]
ra_nom	10.442827546576	Nominal RA [deg]
dec_nom	-9.1082928652493	Nominal Dec [deg]
roll_nom	87.436345929292	Nominal Roll [deg]
revision	4	Processing version of data
ontime	10179.19996208	Sum of GTIs [s]
livetime	10050.304802981	Livetime [s]
ontime0	10179.19996208	Sum of GTIs [s]
ontime1	10179.19996208	Sum of GTIs [s]
ontime2	10179.19996208	Sum of GTIs [s]
ontime3	10179.19996208	Sum of GTIs [s]
ontime5	10179.19996208	Sum of GTIs [s]
ontime7	10179.19996208	Sum of GTIs [s]
l2events	131912	Number of level 2 events



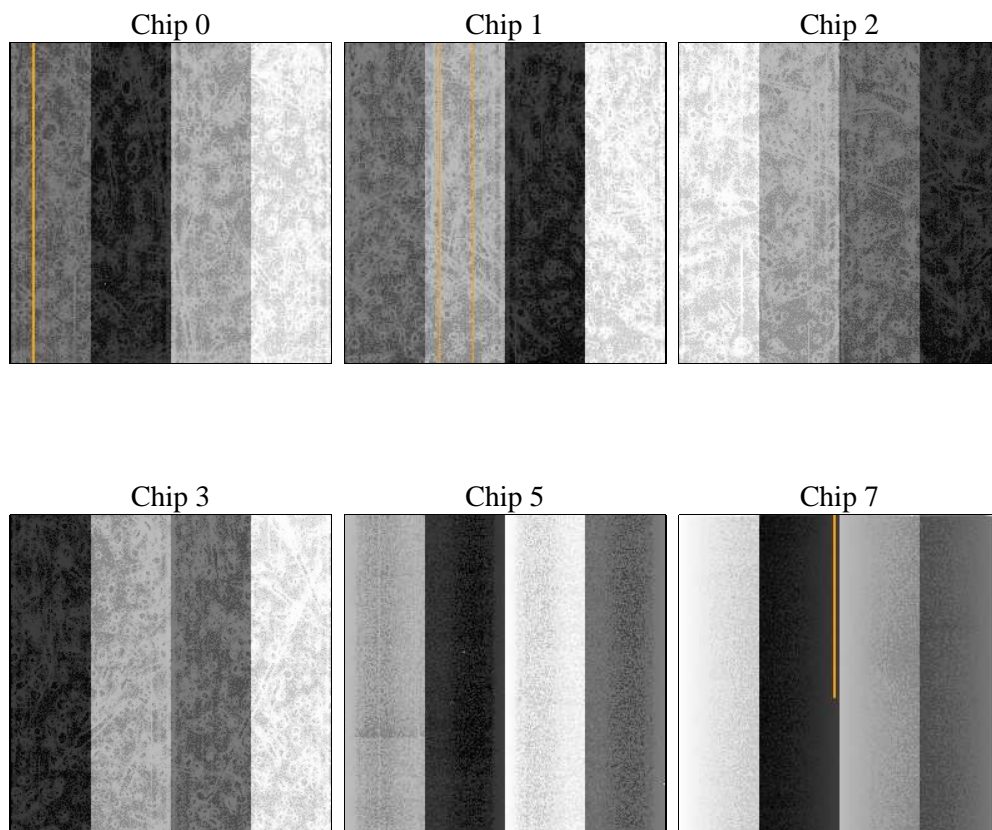
## 2 OBI

### 2.1 OBI

#### 2.1.1 Images



#### 2.1.2 Bias



### 2.1.3 Parameters

obi_num	1	Obi number	sched_exp_time	10000.000000	[s] Scheduled observation exposure time
ascdsver	8.5	Processing system revision	ontime	10179.19996208	Sum of GTIs [s]
caldsver	4.5.4	&#160	ontime0	10179.19996208	Sum of GTIs [s]
date	2012-12-08T09:31:06	Date and time of file creation	ontime1	10179.19996208	Sum of GTIs [s]
revision	4	Processing version of data	ontime2	10179.19996208	Sum of GTIs [s]
			ontime3	10179.19996208	Sum of GTIs [s]
			ontime5	10179.19996208	Sum of GTIs [s]
			ontime7	10179.19996208	Sum of GTIs [s]
			l1events	600505	Number of level 1 events

### 2.1.4 Events

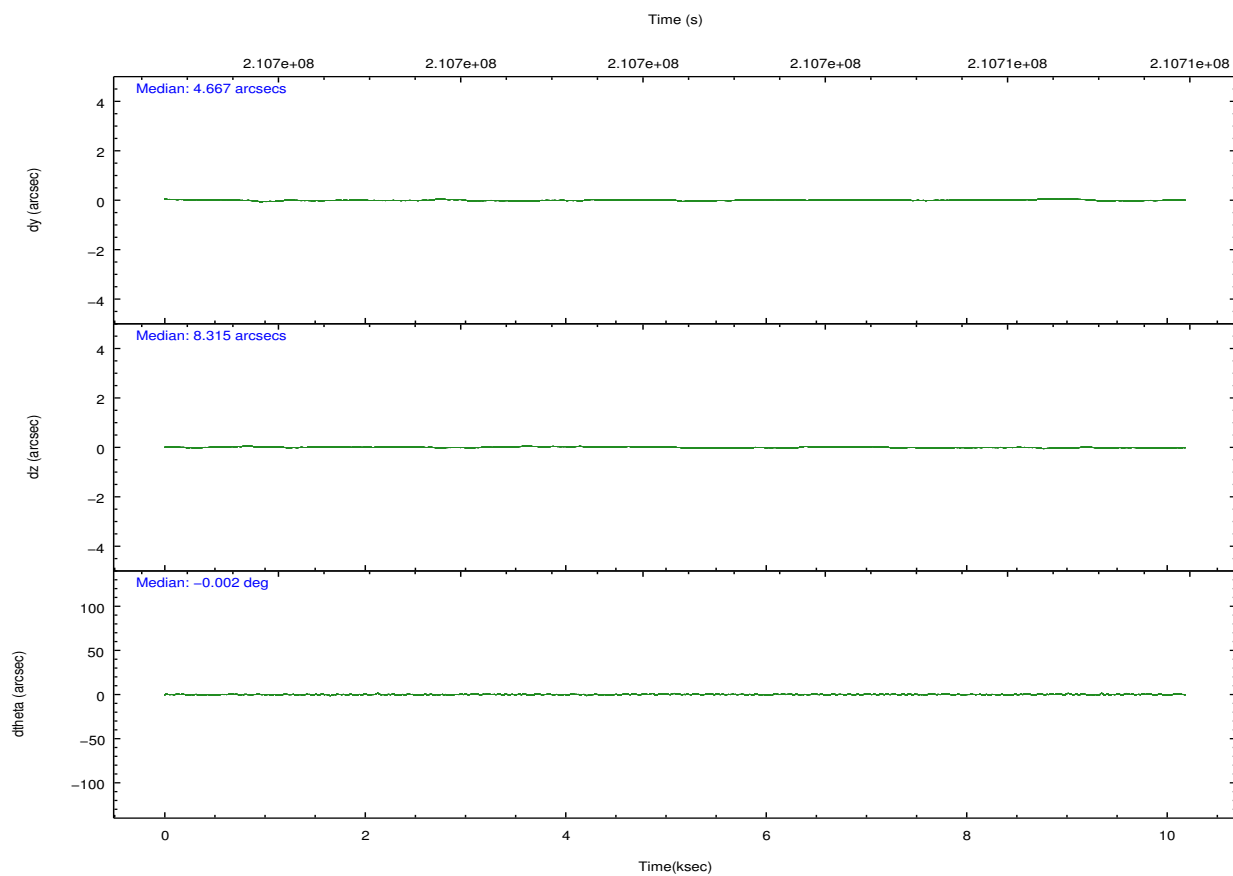
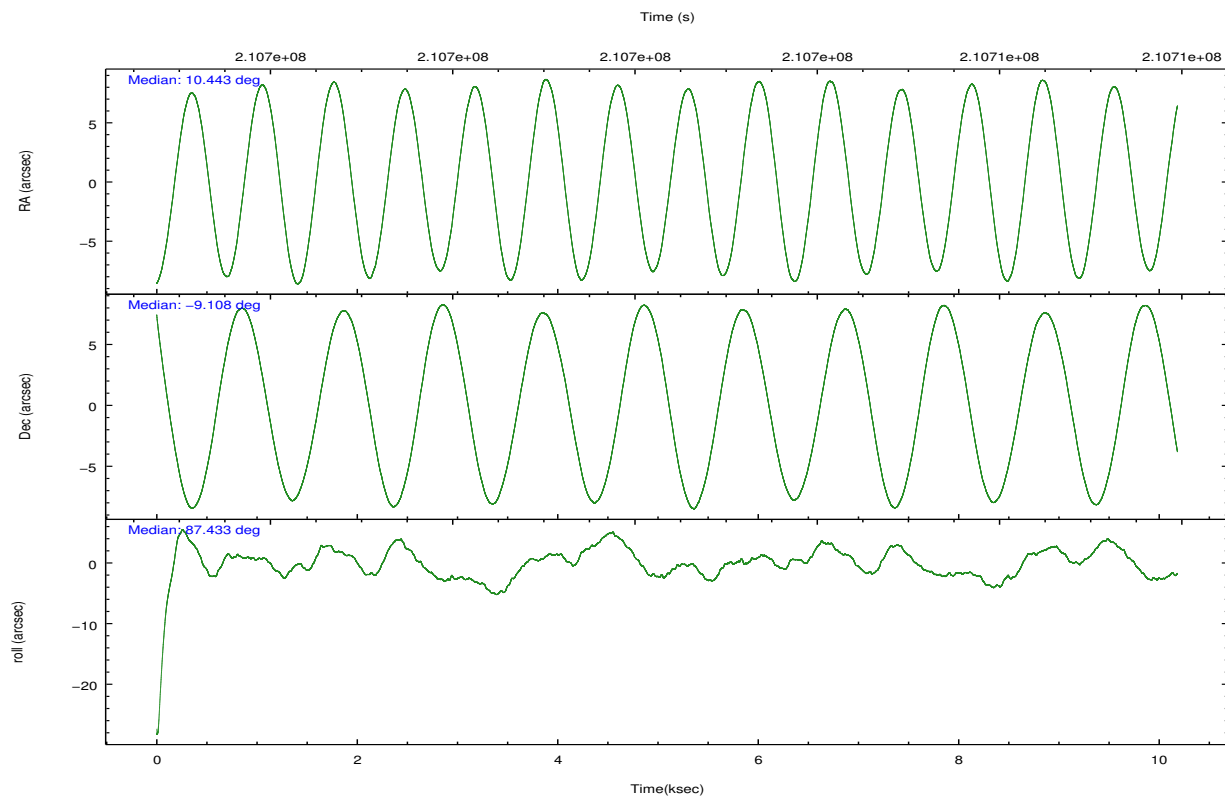
	ccd 0	ccd 1	ccd 2	ccd 3	ccd 5	ccd 7		ccd 0	ccd 1	ccd 2	ccd 3	ccd 5	ccd 7
level 1 events	83444	83589	86736	91692	138531	116513	grade 0 events	4950	8452	4859	9439	12617	4375
rejected events	73654	69252	77518	76813	80286	73883		5%	10%	5%	10%	9%	3%
rejected %	88%	82%	89%	83%	57%	63%	grade 1 events	66	44	50	80	314	95
								0%	0%	0%	0%	0%	0%
							grade 2 events	2325	2810	1970	2541	17978	9524
								2%	3%	2%	2%	12%	8%
							grade 3 events	1059	1240	992	1159	2205	4366
								1%	1%	1%	1%	1%	3%
							grade 4 events	976	1168	990	1142	2200	4210
								1%	1%	1%	1%	1%	3%
							grade 5 events	3632	3597	3401	3821	9386	10996
								4%	4%	3%	4%	6%	9%
							grade 6 events	1863	2218	1631	1869	30692	25474
								2%	2%	1%	2%	22%	21%
							grade 7 events	68573	64060	72843	71641	63139	57473
								82%	76%	83%	78%	45%	49%



## 2.2 Compared Parameters

Parameter	Planned	Actual	Parameter	Planned	Actual
Instrument	ACIS	ACIS	Obspar format version number	7	7
Detector	ACIS-012357	ACIS-012357	Obspar file type	PREDICTED	ACTUAL
Grating	NONE	NONE	Obspar update status	NONE	UPDATED
Data mode	VFAINT	VFAINT	Number of optional ACIS chips dropped	0	0
Observation mode	POINTING	POINTING	On-chip summing requested	N	N
[deg] Pointing RA	10.455739	10.44282754657564	Subarray requested	NONE	NONE
[deg] Pointing Dec	-9.132572	-9.108292865249336	Alternating exposures requested	N	N
[deg] Pointing Roll	87.229723	87.43634592929229	[s] Primary exposure time	0.000000	3.2
[mm] SIM focus pos	-0.782348	-0.7809083437167272			
[mm] SIM defocus	0	0.001439871863259334			
[mm] SIM translation stage pos	-233.592463	-233.5874344608287			
[mm] SIM translation stage offset	0	-0.005018542100998502			
[s] Observation start time (MET)	210697447.184000	210695731.67844			
Observation start date	2004-09-04T15:03:03	2004-09-04T14:35:31			
[s] Observation end time (MET)	210707447.184000	210707581.19147			
Observation end date	2004-09-04T17:49:43	2004-09-04T17:53:01			
Read mode	TIMED	TIMED			

## 2.3 Aspect

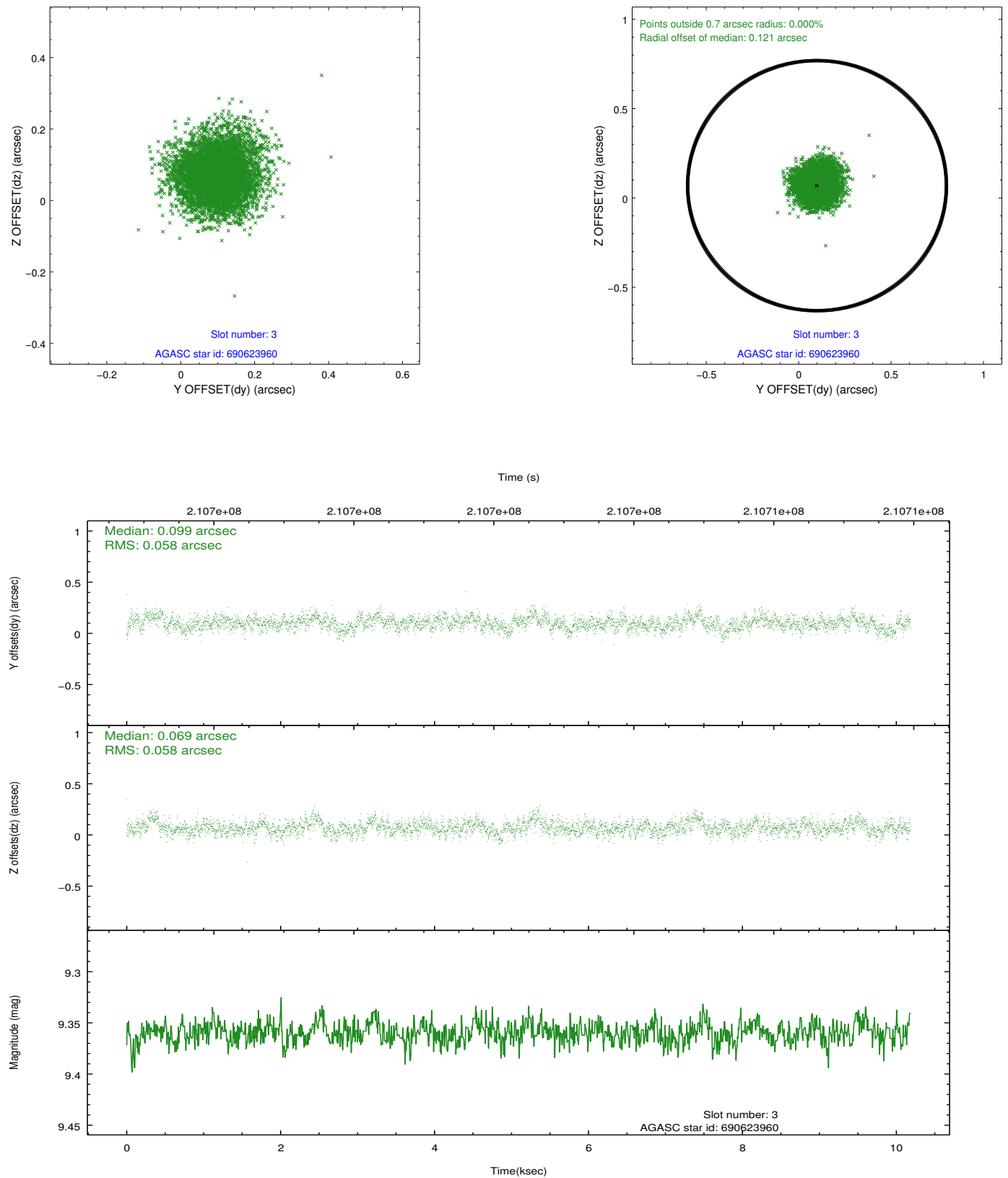


### Slot Statistics

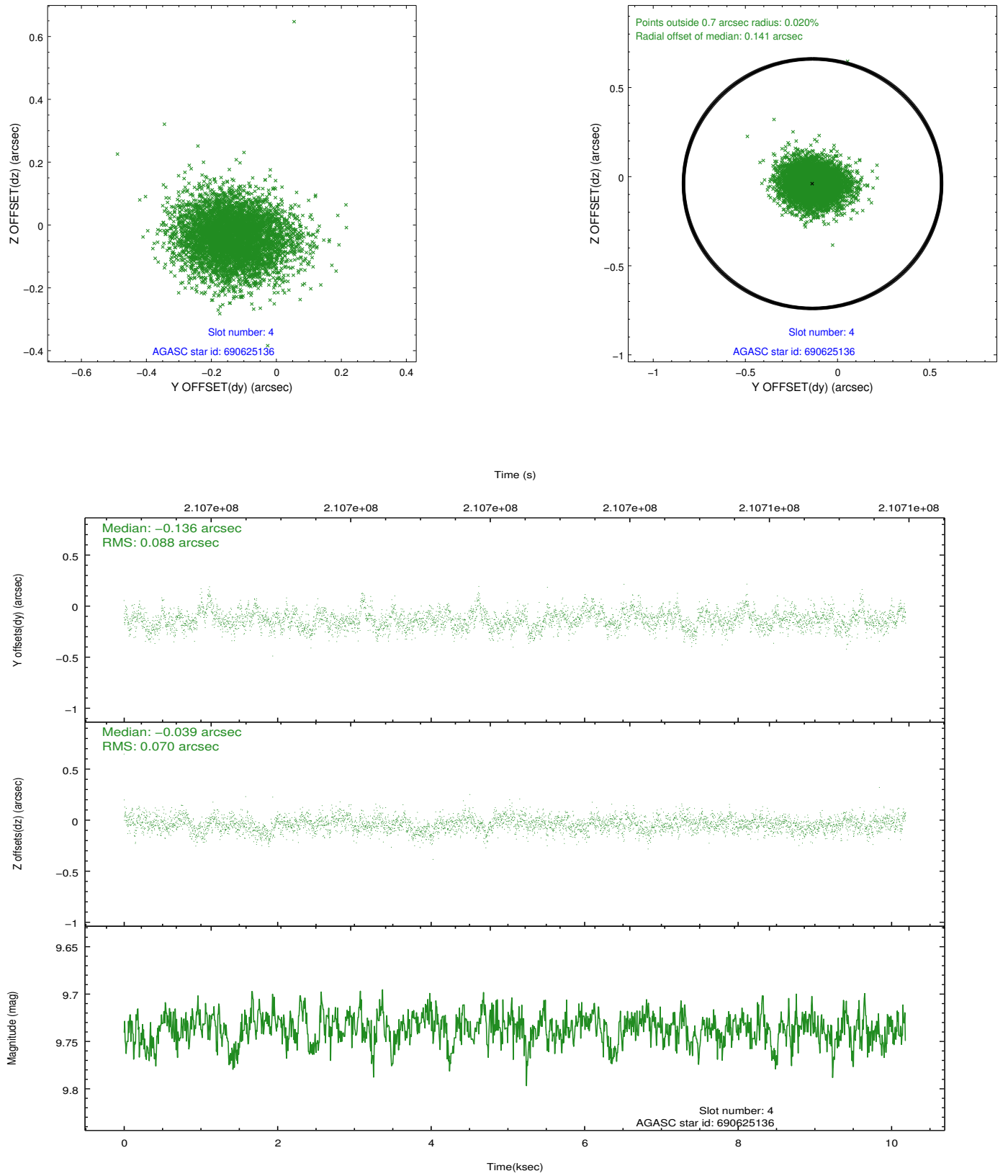
slot	status	id	mag	n_pts	med_dy	med_dz	dr1	dr2	ra	dec	mean_y	mean_z
0	FID	ACIS-I-1	7.24	2484	0.038	0.016	0.006	0.010	0.000000	0.000000	935.12	-831.73
1	FID	ACIS-I-5	7.22	2484	-0.183	0.057	0.006	0.010	0.000000	0.000000	-1812.92	1065.54
2	FID	ACIS-I-6	7.25	2484	0.053	-0.003	0.006	0.010	0.000000	0.000000	400.11	1710.58
3	GUIDE	690623960	9.36	4967	0.099	0.069	0.087	0.143	10.570675	-9.168103	-107.72	-413.93
4	GUIDE	690625136	9.74	4963	-0.136	-0.039	0.118	0.197	10.395190	-8.489346	2302.49	327.35
5	GUIDE	690625776	9.15	4966	-0.038	-0.007	0.082	0.132	10.846019	-9.315741	-591.36	-1418.18
6	GUIDE	690632656	9.26	4963	0.080	-0.113	0.073	0.121	10.397747	-9.674983	-1960.32	110.80
7	GUIDE	690636928	9.26	4966	-0.003	0.081	0.098	0.157	11.054156	-9.568424	-1466.49	-2197.72

## 2.4 Star Slots

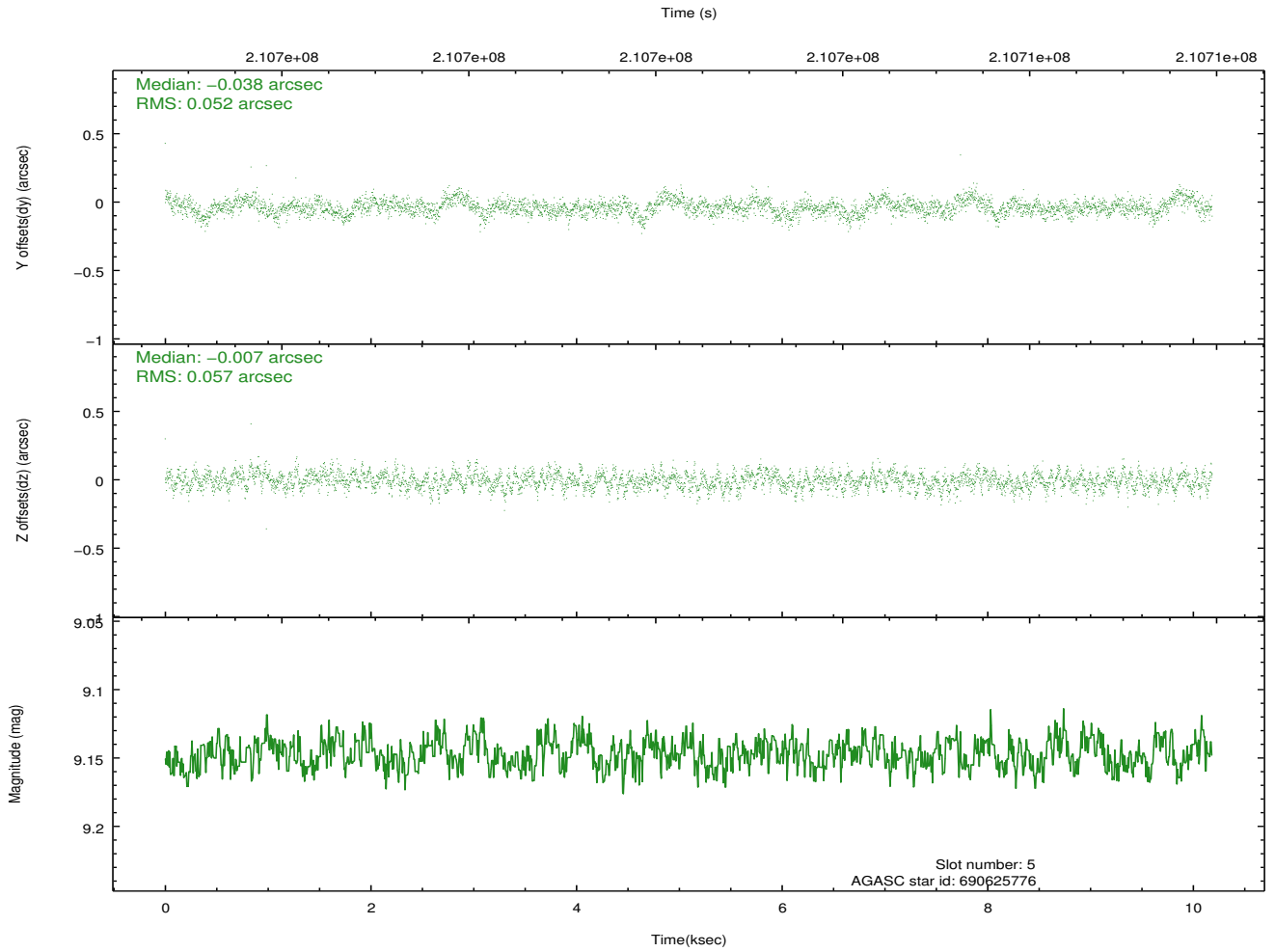
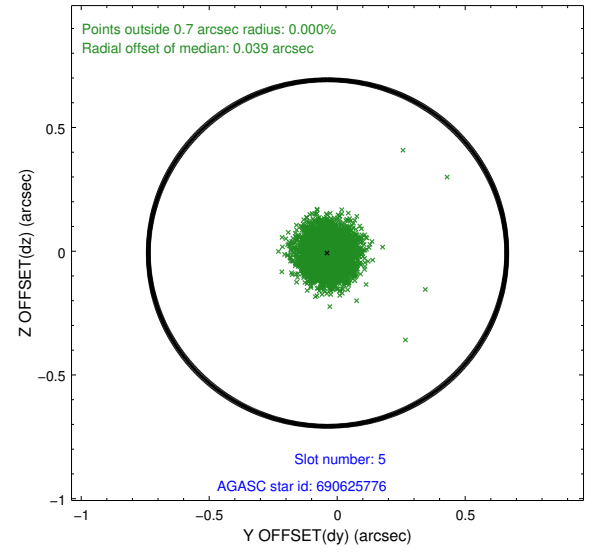
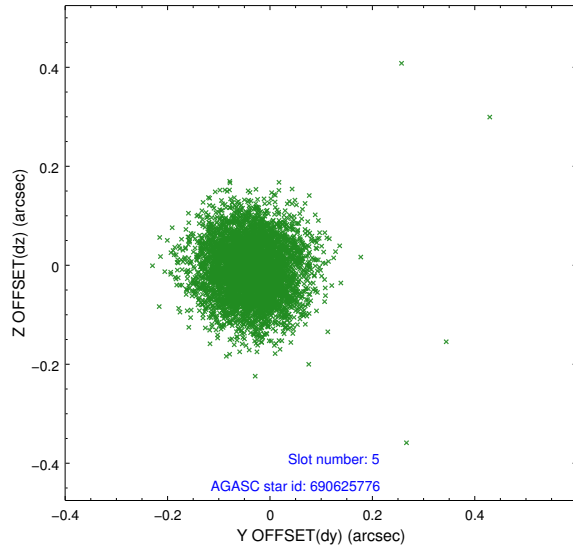
### 2.4.1 Slot 3



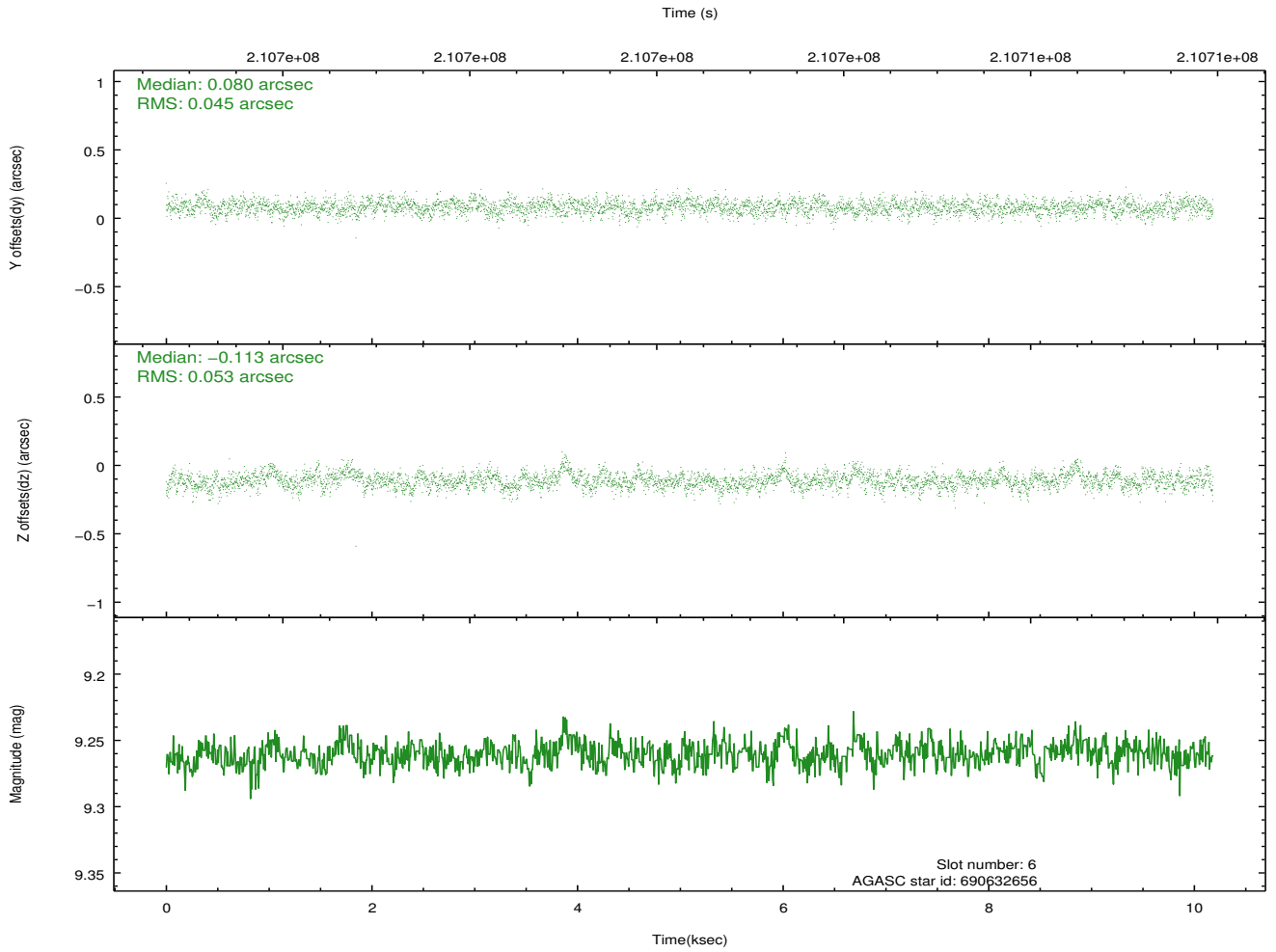
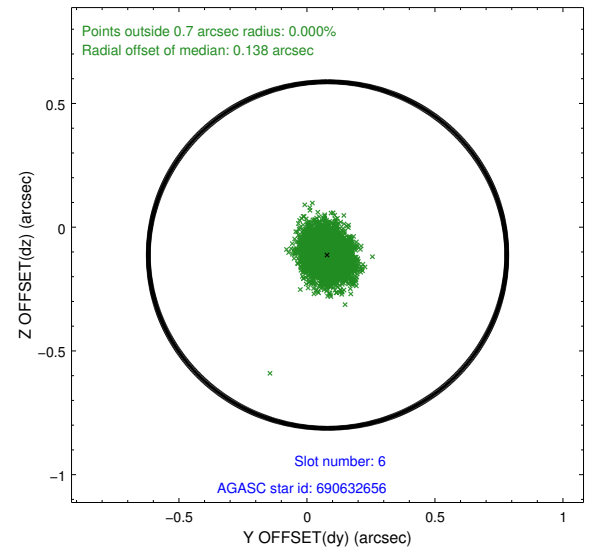
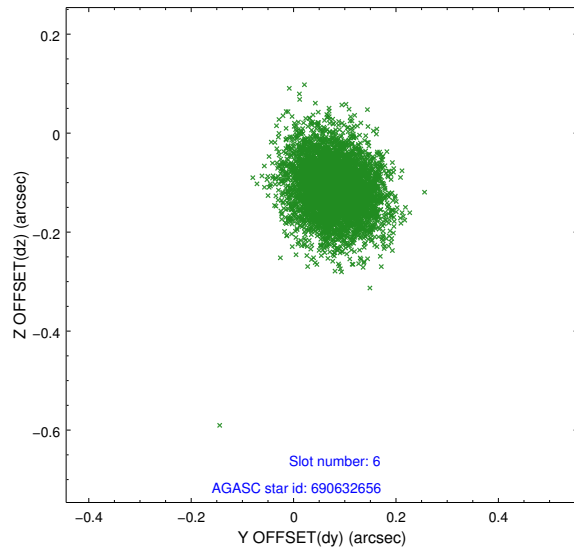
## 2.4.2 Slot 4



### 2.4.3 Slot 5

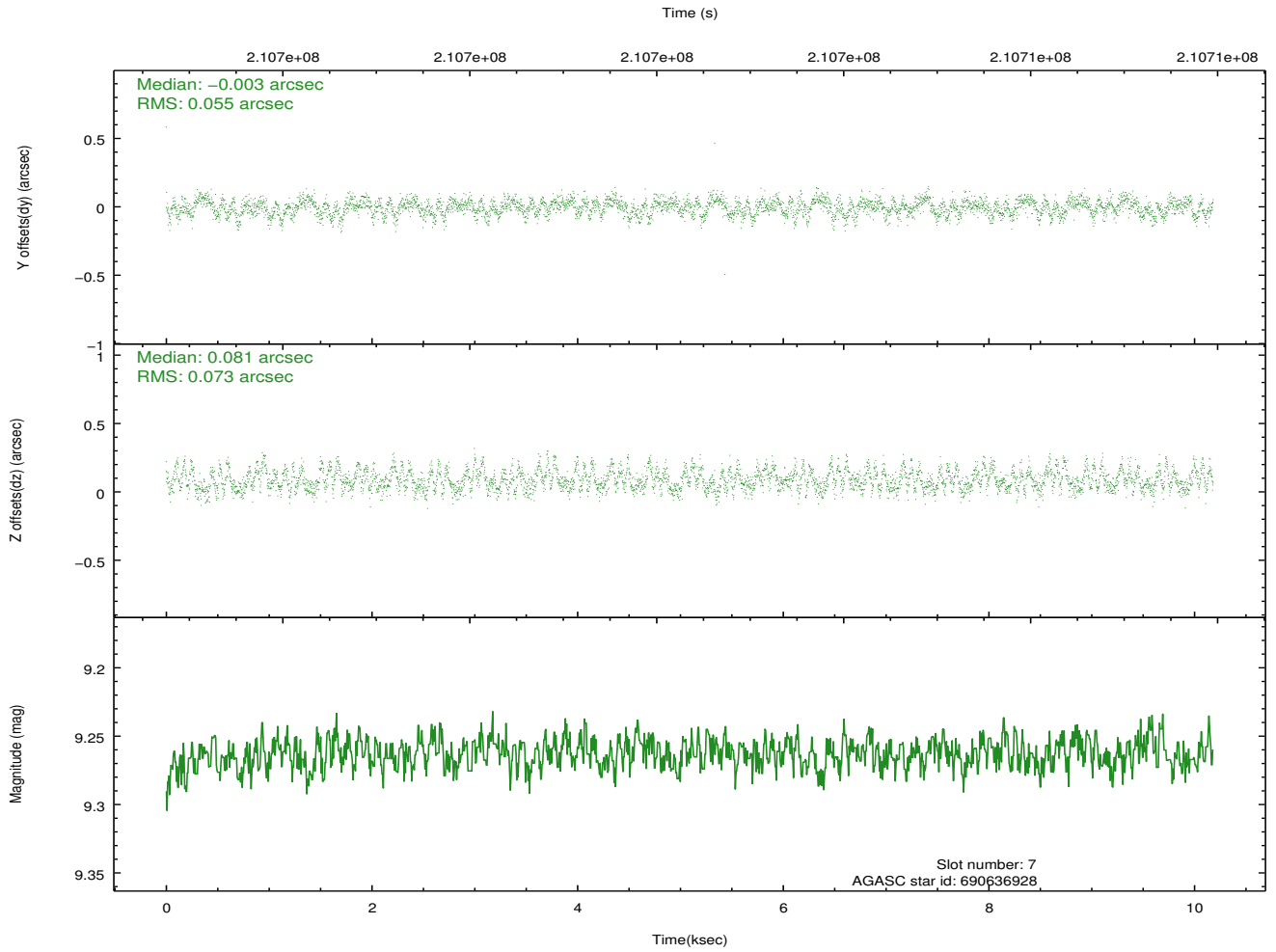
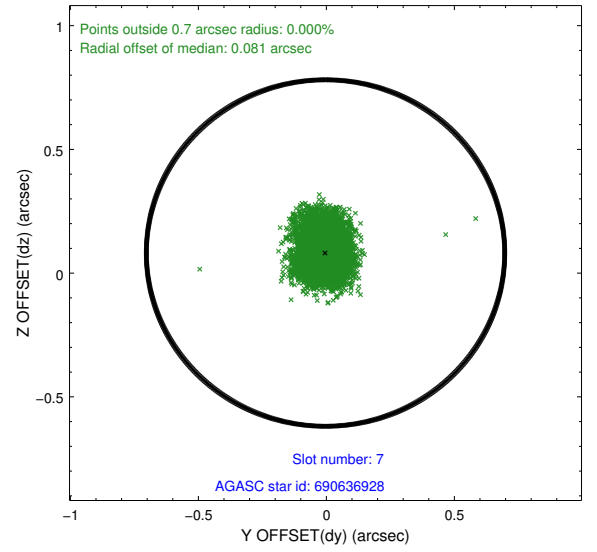
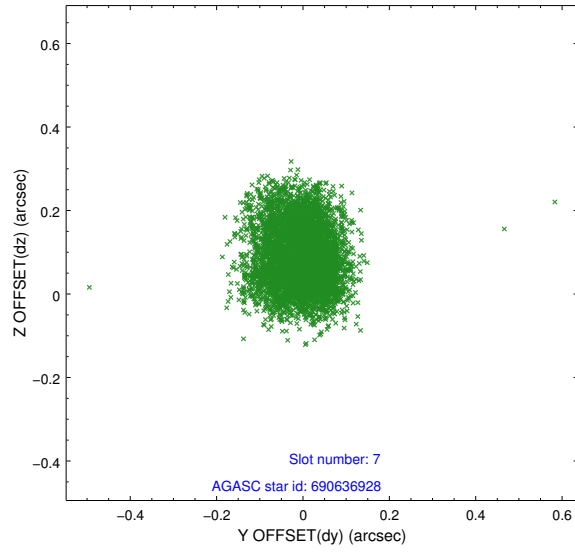


## 2.4.4 Slot 6



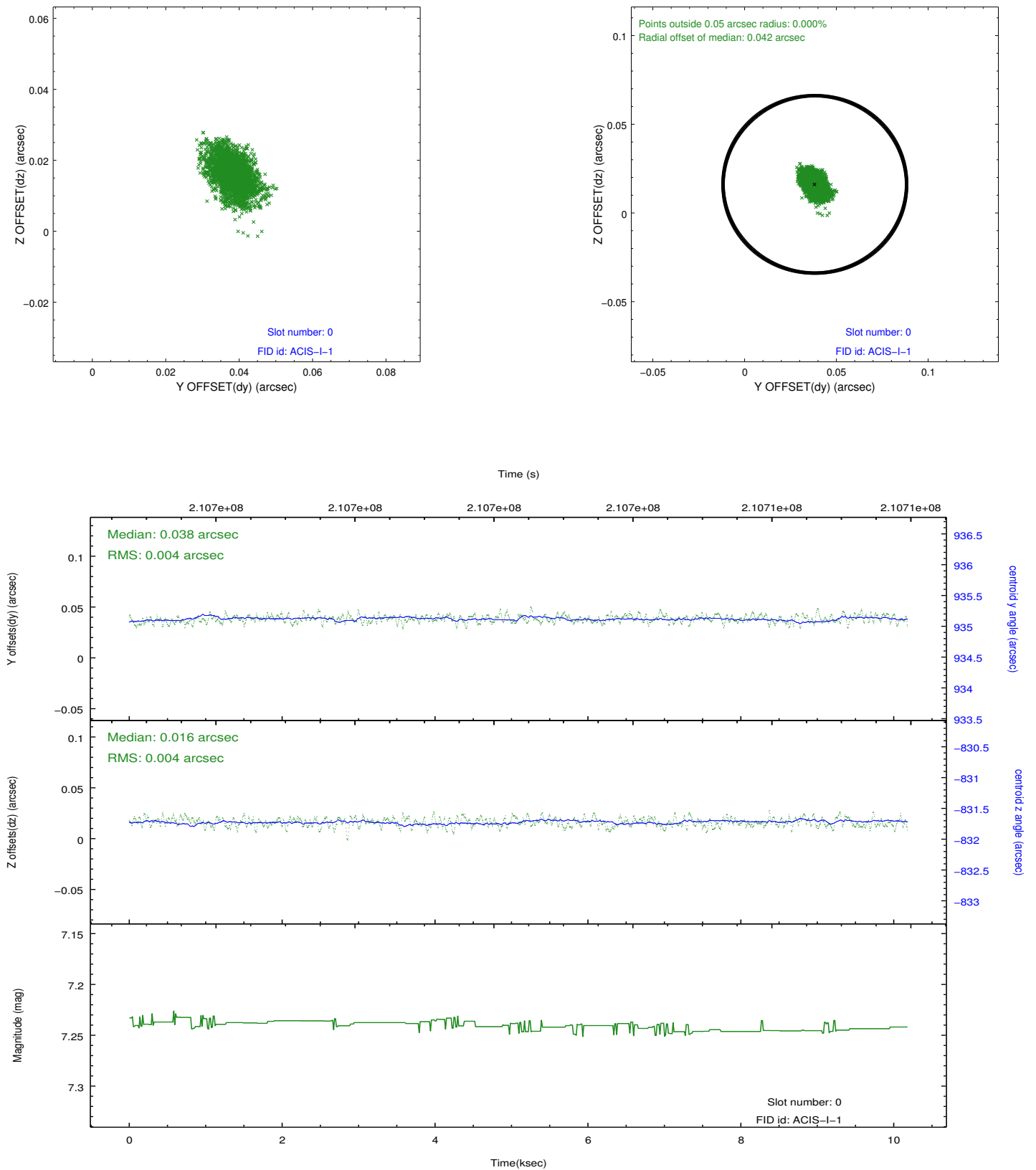


## 2.4.5 Slot 7

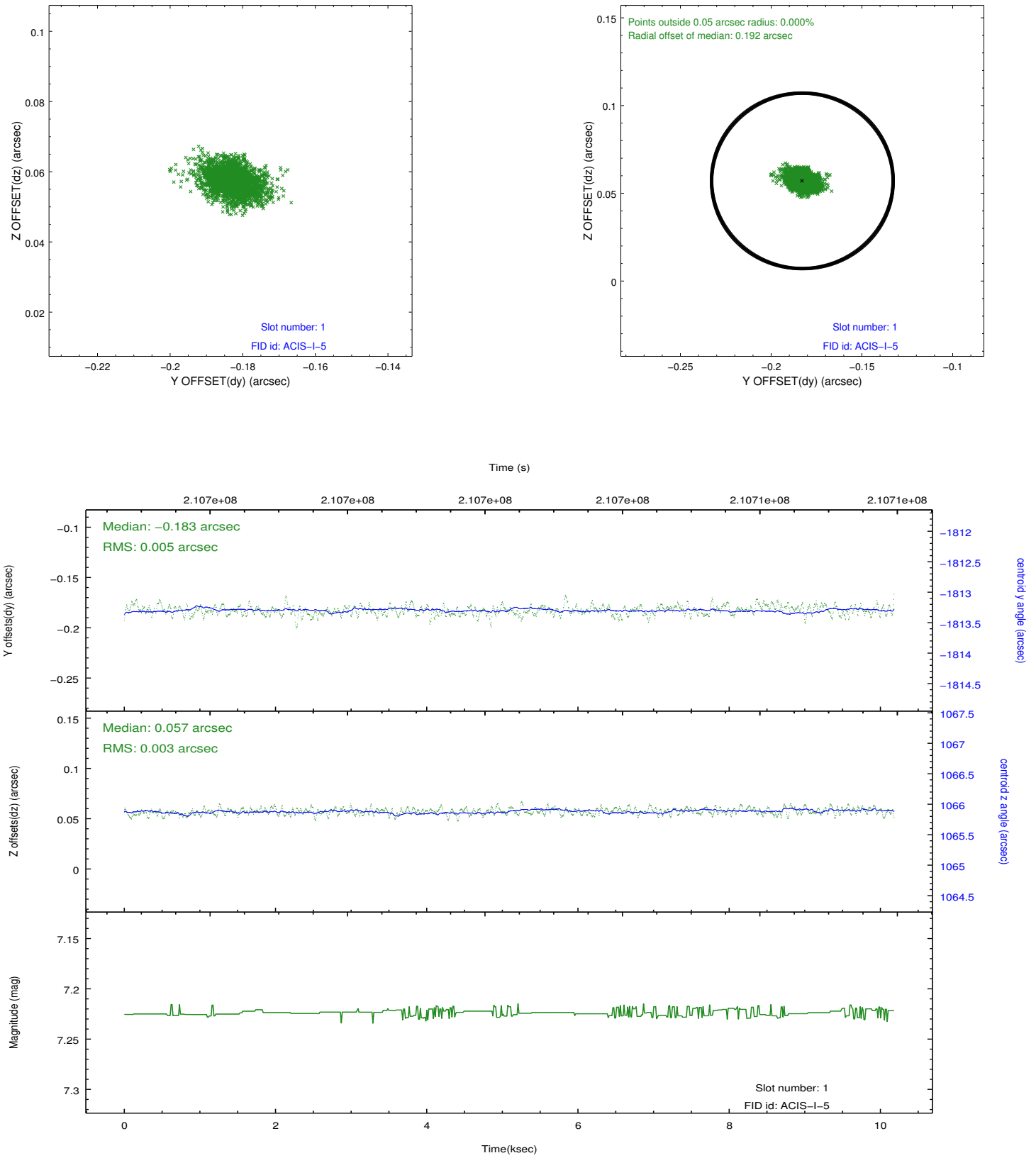


## 2.5 FID Slots

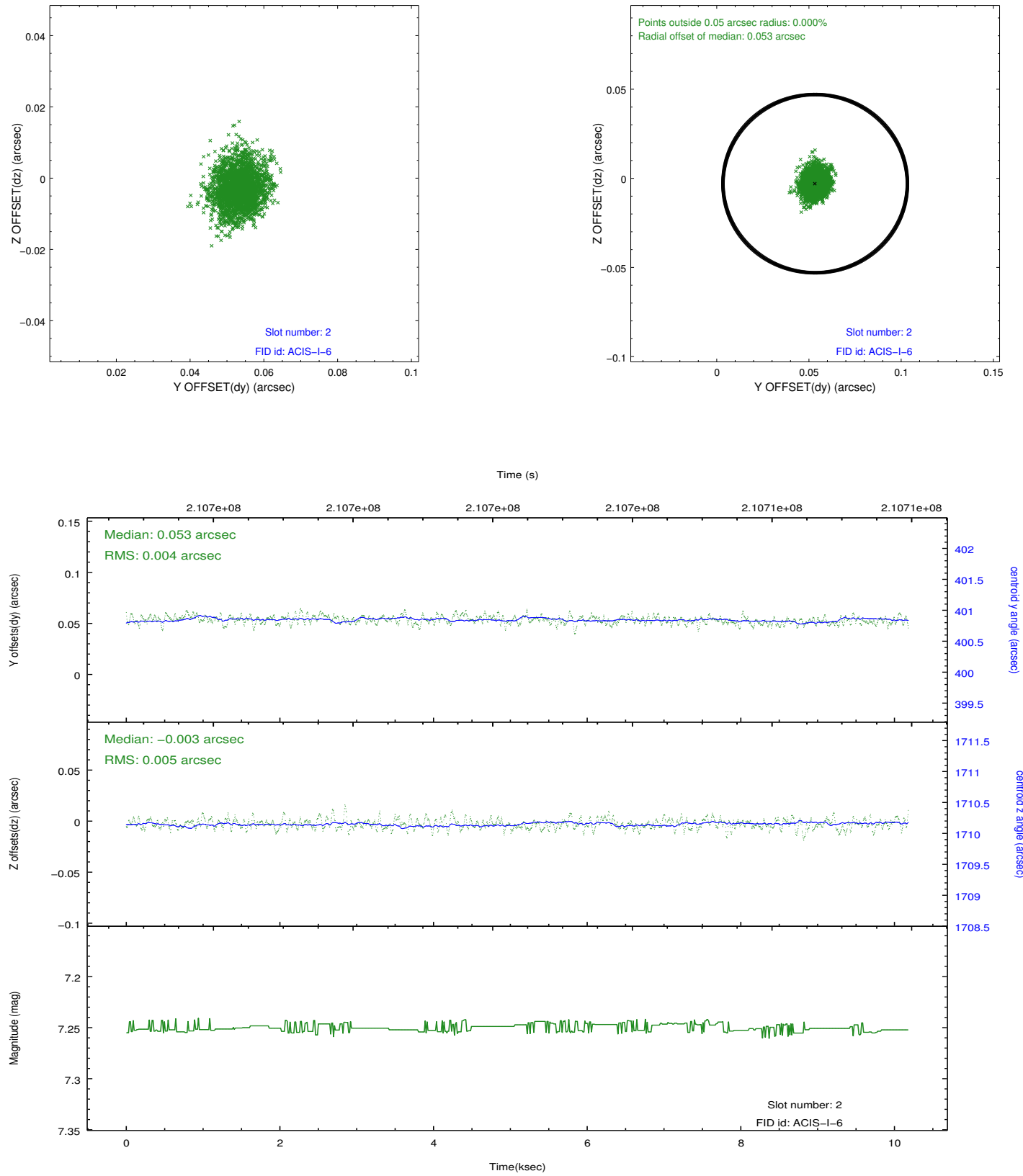
### 2.5.1 Slot 0



## 2.5.2 Slot 1



### 2.5.3 Slot 2



## **A Summary**

### **A.1 Status**

V&V Scientist	Jen Lauer
V&V Date (YYYY-MM-DD)	2013.01.02
V&V Edition	1
V&V Disposition and Status	OK
V&V Charge Time	10.179

### **A.2 Comments**