

V&V Reference Report

L2 ASCDS Version : 7.6.7.1

Observation 4887 - L2 Version 001
Chandra X-Ray Center

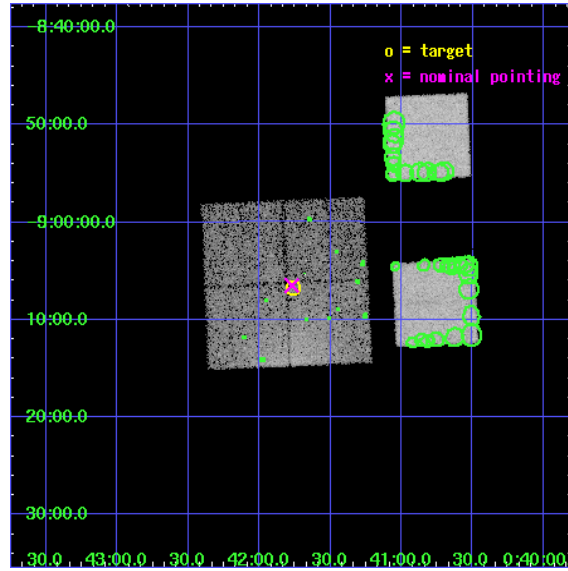
L2 Processing Date : Apr 19 2006

Contents

1	Front	2
2	OBI	3
2.1	OBI	3
2.1.1	Images	3
2.1.2	Bias	3
2.1.3	Parameters	4
2.1.4	Events	4
2.2	Compared Parameters	5
2.3	Aspect	6
2.4	Star Slots	9
2.4.1	Slot 3	9
2.4.2	Slot 4	10
2.4.3	Slot 5	11
2.4.4	Slot 6	12
2.4.5	Slot 7	13
2.5	FID Slots	14
2.5.1	Slot 0	14
2.5.2	Slot 1	15
2.5.3	Slot 2	16
3	Point Sources	17
A	Summary	18
A.1	Status	18
A.2	Comments	18

1 Front

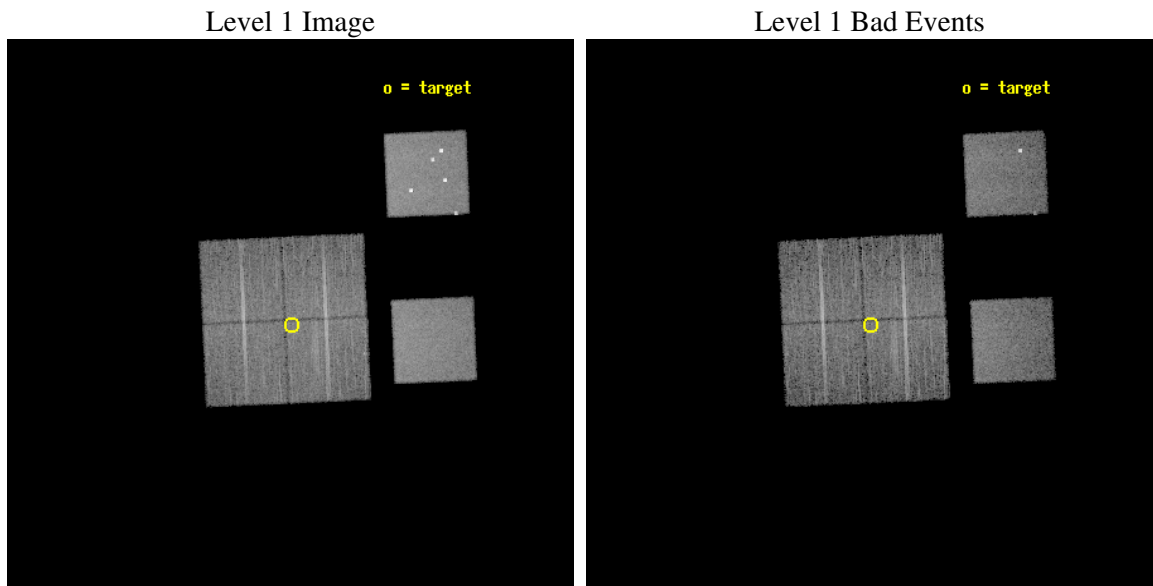
seq_num	700969
obs_id	4887
title	AGN in low-redshift Clusters of Galaxies
observer	Prof. Paul Martini
object	Abell85-P7
dtcycle	0
cycle	P
ra_targ	10.440833
dec_targ	-9.1125
ra_nom	10.442826173653
dec_nom	-9.1083206247479
roll_nom	87.43634569736
revision	3
ontime	10179.19996208
livetime	10050.304802981
ontime0	10179.19996208
ontime1	10179.19996208
ontime2	10179.19996208
ontime3	10179.19996208
ontime5	10179.19996208
ontime7	10179.19996208
l2events	127025



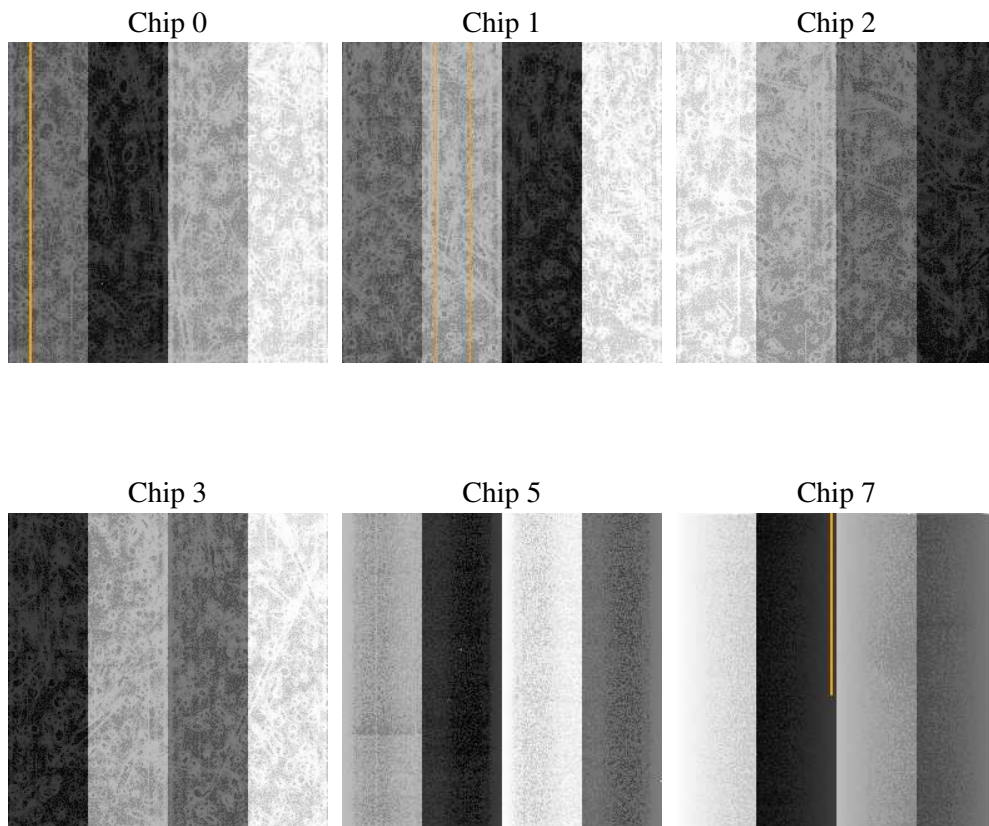
2 OBI

2.1 OBI

2.1.1 Images



2.1.2 Bias



2.1.3 Parameters

obi_num	1
ascdsver	7.6.7.1
caldbver	3.2.1
date	2006-04-19T10:37:40
revision	3

sched_exp_time	10000.000000
ontime	11473.171681643
ontime0	11473.171681643
ontime1	11473.171681643
ontime2	11473.171681643
ontime3	11473.171681643
ontime5	11473.171701521
ontime7	11473.171701521
l1events	600505

2.1.4 Events

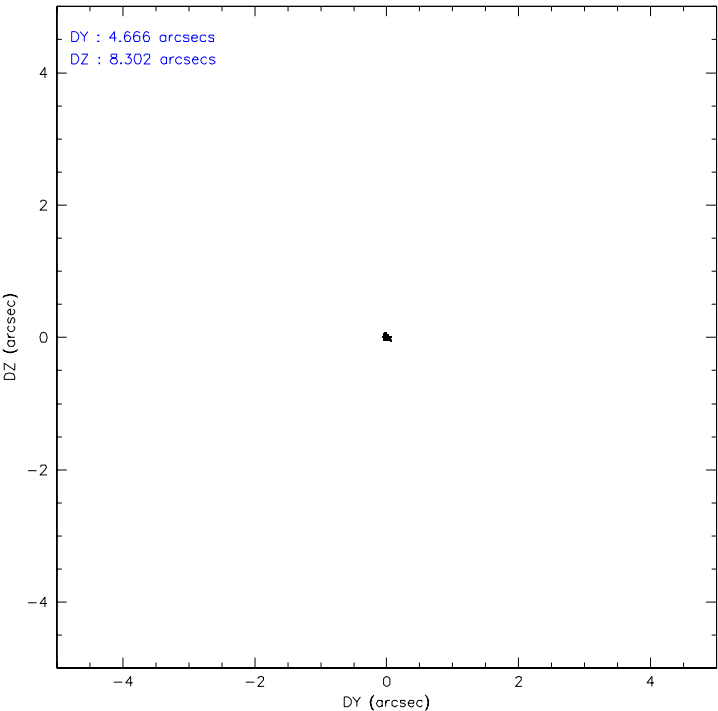
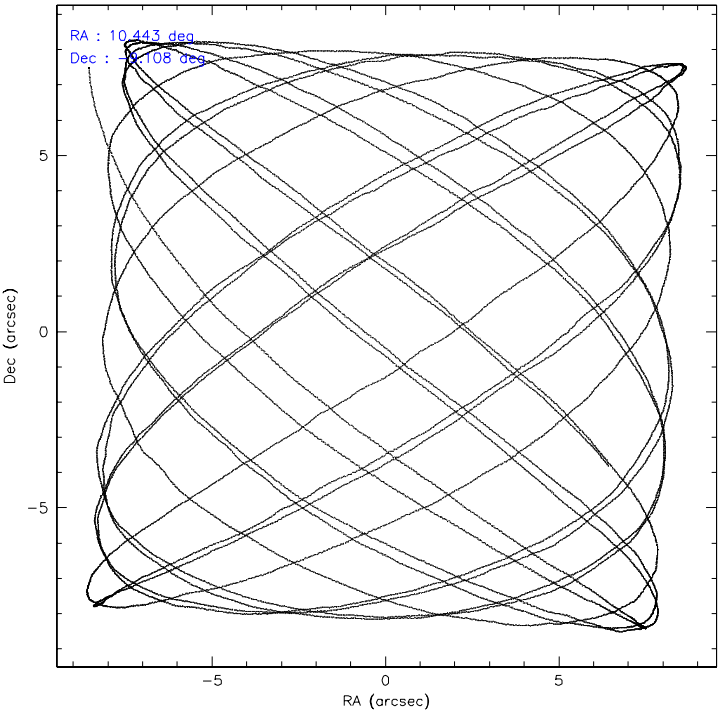
	ccd 0	ccd 1	ccd 2	ccd 3	ccd 5	ccd 7
level 1 events	83444	83589	86736	91692	138531	116513
rejected events	73655	69258	77517	76820	82016	77220
rejected %	88%	82%	89%	83%	59%	66%

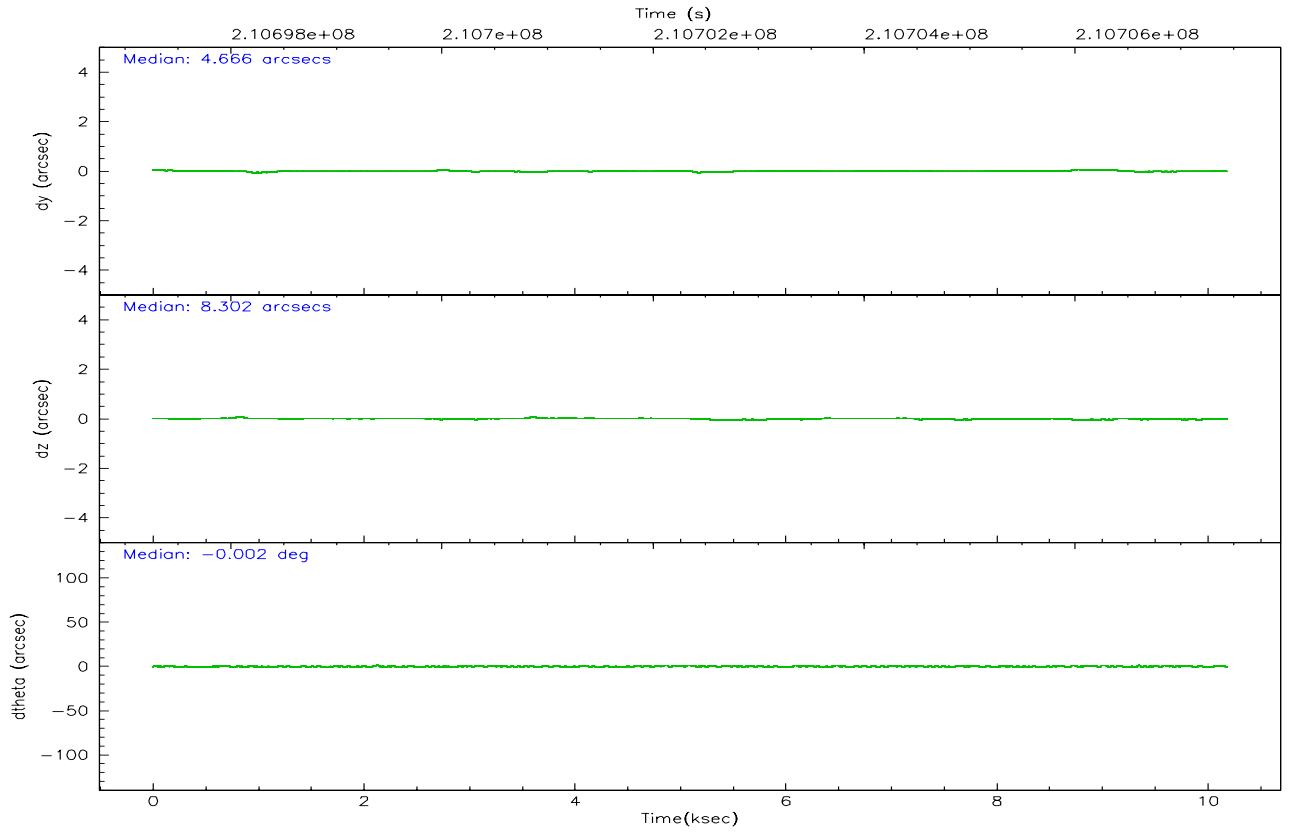
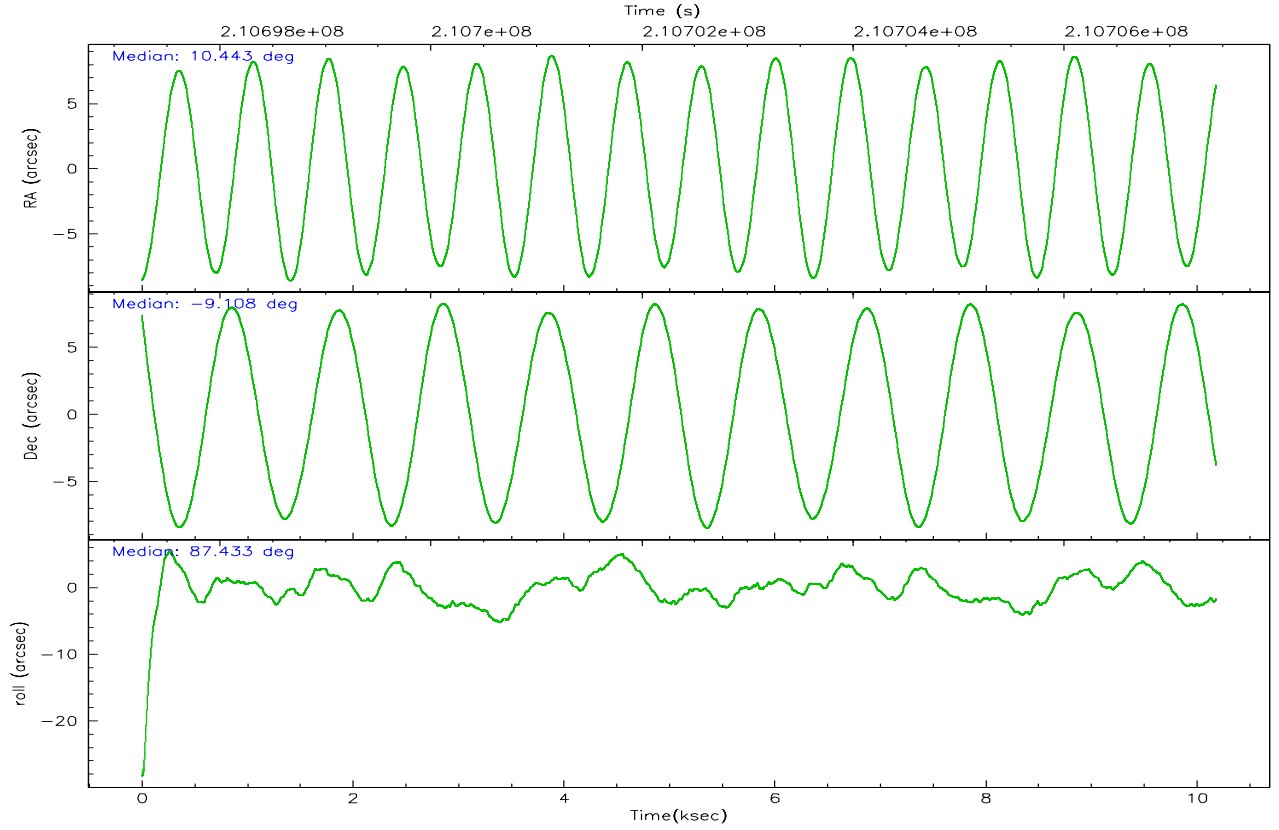
	ccd 0	ccd 1	ccd 2	ccd 3	ccd 5	ccd 7
grade 0 events	4949	8450	4857	9435	11286	2561
	5%	10%	5%	10%	8%	2%
grade 1 events	66	44	50	80	267	59
	0%	0%	0%	0%	0%	0%
grade 2 events	2326	2812	1972	2545	17974	11003
	2%	3%	2%	2%	12%	9%
grade 3 events	1058	1238	992	1158	1220	2259
	1%	1%	1%	1%	0%	1%
grade 4 events	976	1167	990	1142	1170	2166
	1%	1%	1%	1%	0%	1%
grade 5 events	3632	3592	3399	3819	6167	7801
	4%	4%	3%	4%	4%	6%
grade 6 events	1863	2224	1633	1870	32093	26203
	2%	2%	1%	2%	23%	22%
grade 7 events	68574	64062	72843	71643	68354	64461
	82%	76%	83%	78%	49%	55%

2.2 Compared Parameters

Parameter	Planned	Actual	Parameter	Planned	Actual
Instrument	ACIS	ACIS	Obspar format version number	6	6
Detector	ACIS-012357	ACIS-012357	Obspar file type	PREDICTED	ACTUAL
Grating	NONE	NONE	Obspar update status	NONE	UPDATED
Data mode	VFAINT	VFAINT	On-chip summing requested	N	N
Observation mode	POINTING	POINTING	Subarray requested	NONE	NONE
Pointing RA	10.455739	10.4428261736533	Alternating exposures requested	N	N
Pointing Dec	-9.132572	-9.108320624747856	Primary exposure time	0.000000	3.2
Pointing Roll	87.229723	87.43634569735981			
SIM focus pos (mm)	-0.782348	-0.7809083437167272			
SIM defocus (mm)	0	0.001439871863259334			
SIM translation stage pos (mm)	-233.592463	-233.5874344608287			
SIM translation stage offset (mm)	0	-0.005018542100998502			
Observation start time	210697447.184000	210695731.67844			
Observation start date	2004-09-04T15:03:03	2004-09-04T14:35:31			
Observation end time	210707447.184000	210707581.19147			
Observation end date	2004-09-04T17:49:43	2004-09-04T17:53:01			
Read mode	TIMED	TIMED			

2.3 Aspect



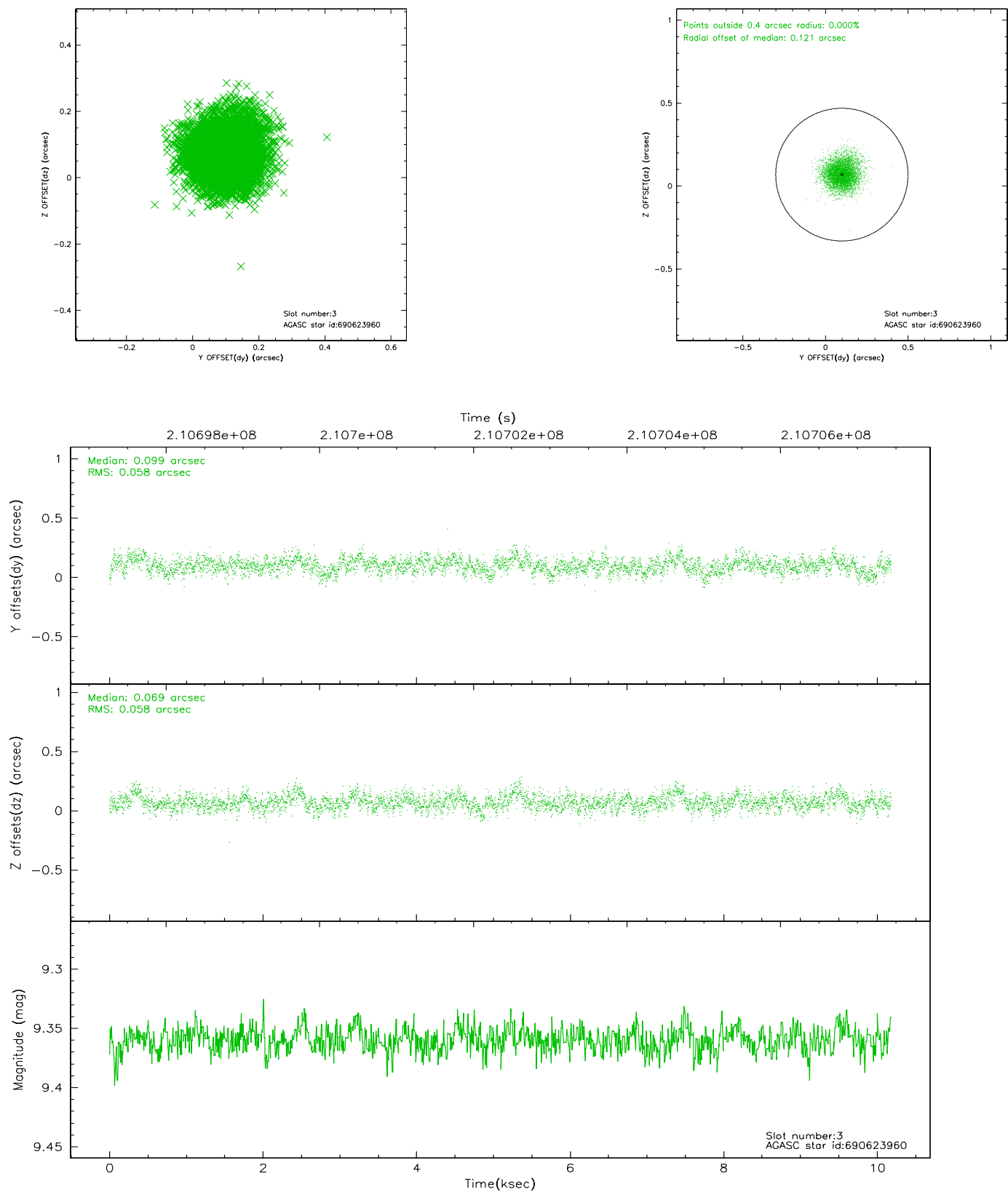


Slot Statistics

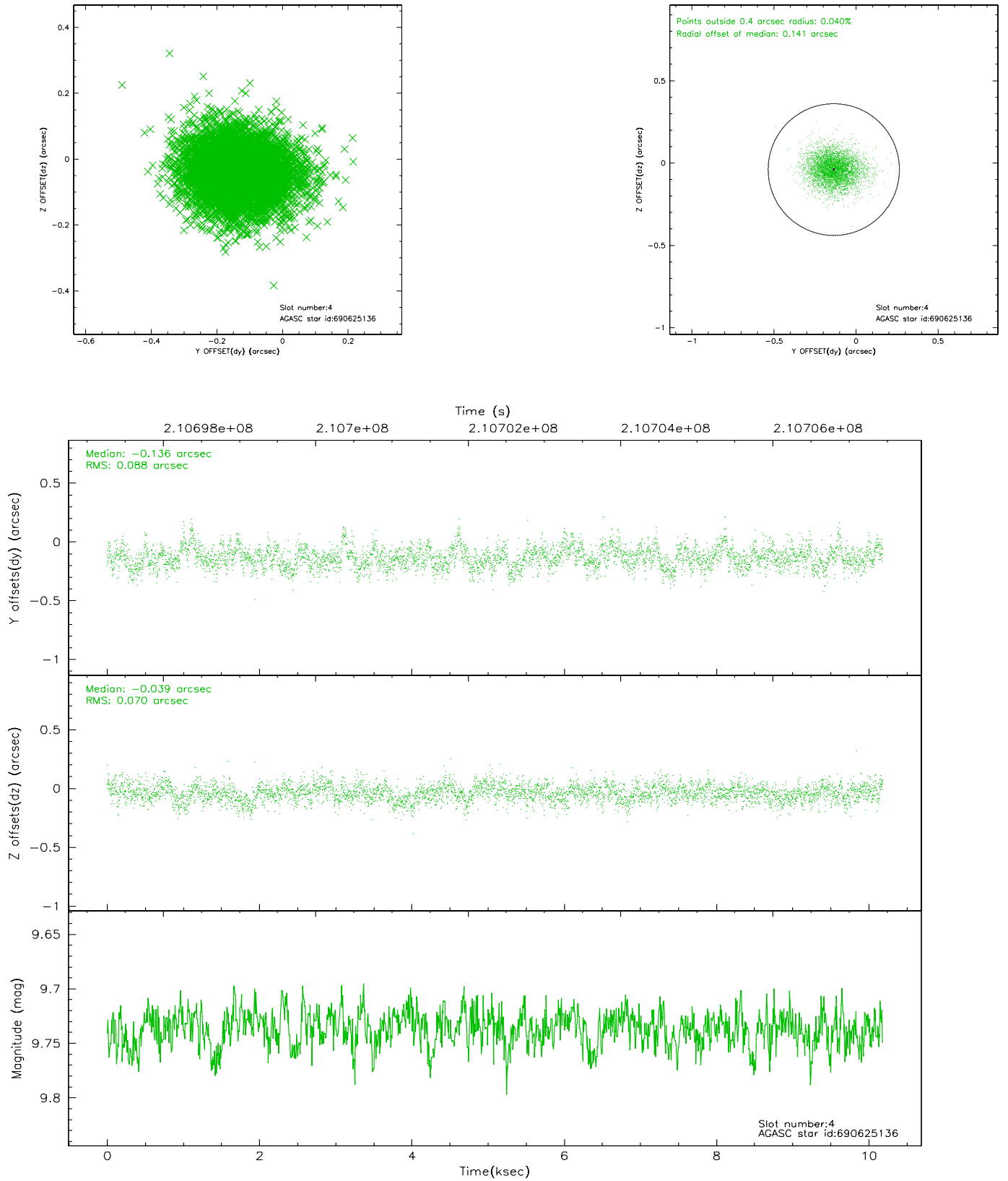
slot	status	id	mag	n_pts	med_dy	med_dz	dr1	dr2	ra	dec	mean_y	mean_z
0	FID	ACIS-I-1	7.24	2484	0.018	0.043	0.006	0.009	0.000000	0.000000	935.10	-831.68
1	FID	ACIS-I-5	7.22	2484	-0.152	0.049	0.006	0.009	0.000000	0.000000	-1812.89	1065.55
2	FID	ACIS-I-6	7.25	2484	0.043	-0.022	0.006	0.010	0.000000	0.000000	400.11	1710.57
3	GUIDE	690623960	9.36	4967	0.099	0.069	0.087	0.143	10.570675	-9.168103	-107.72	-413.93
4	GUIDE	690625136	9.74	4963	-0.136	-0.039	0.118	0.197	10.395190	-8.489346	2302.49	327.35
5	GUIDE	690625776	9.15	4966	-0.038	-0.007	0.082	0.132	10.846019	-9.315741	-591.36	-1418.18
6	GUIDE	690632656	9.26	4963	0.080	-0.113	0.073	0.121	10.397747	-9.674983	-1960.32	110.80
7	GUIDE	690636928	9.26	4966	-0.003	0.081	0.097	0.157	11.054156	-9.568424	-1466.49	-2197.72

2.4 Star Slots

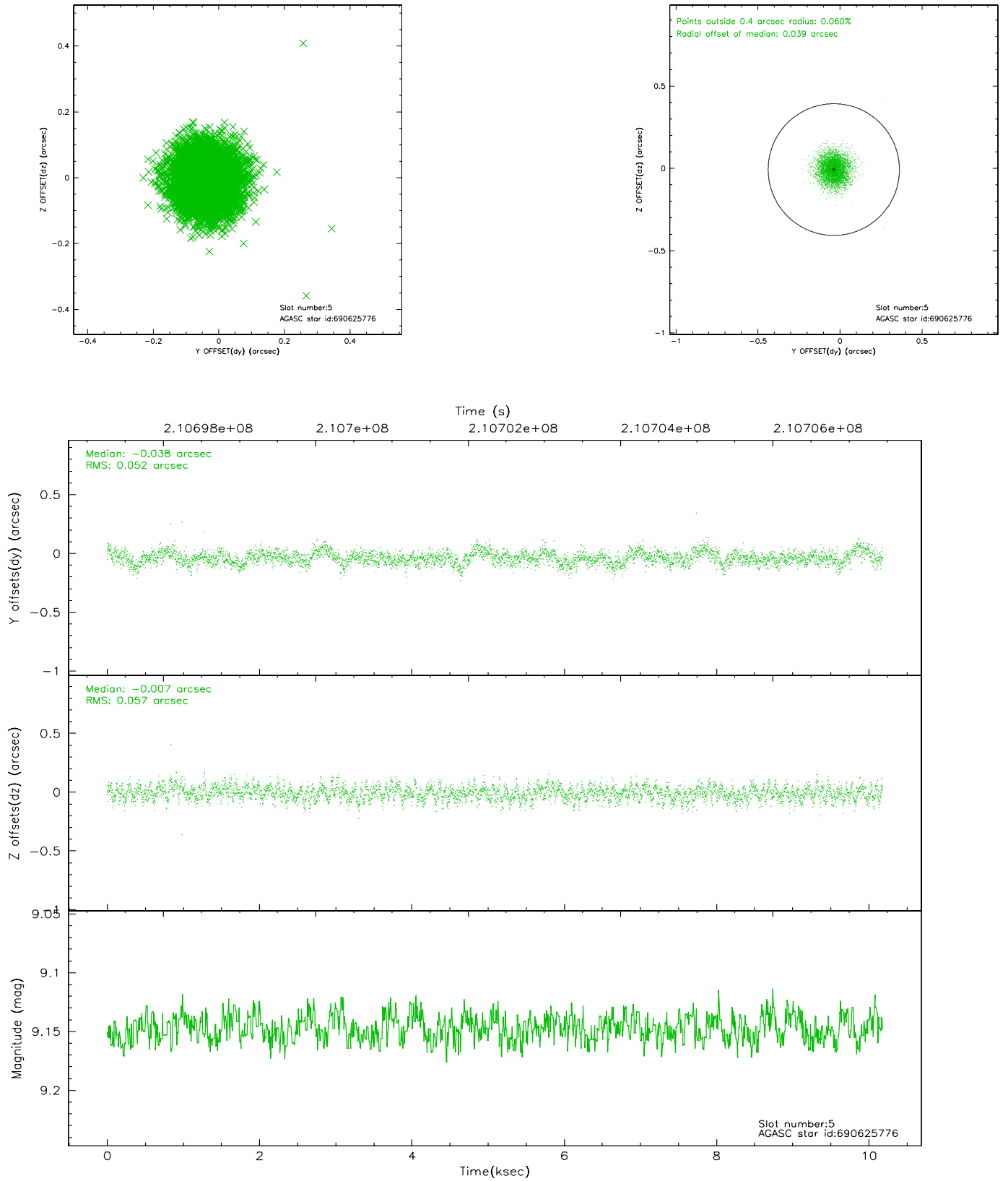
2.4.1 Slot 3



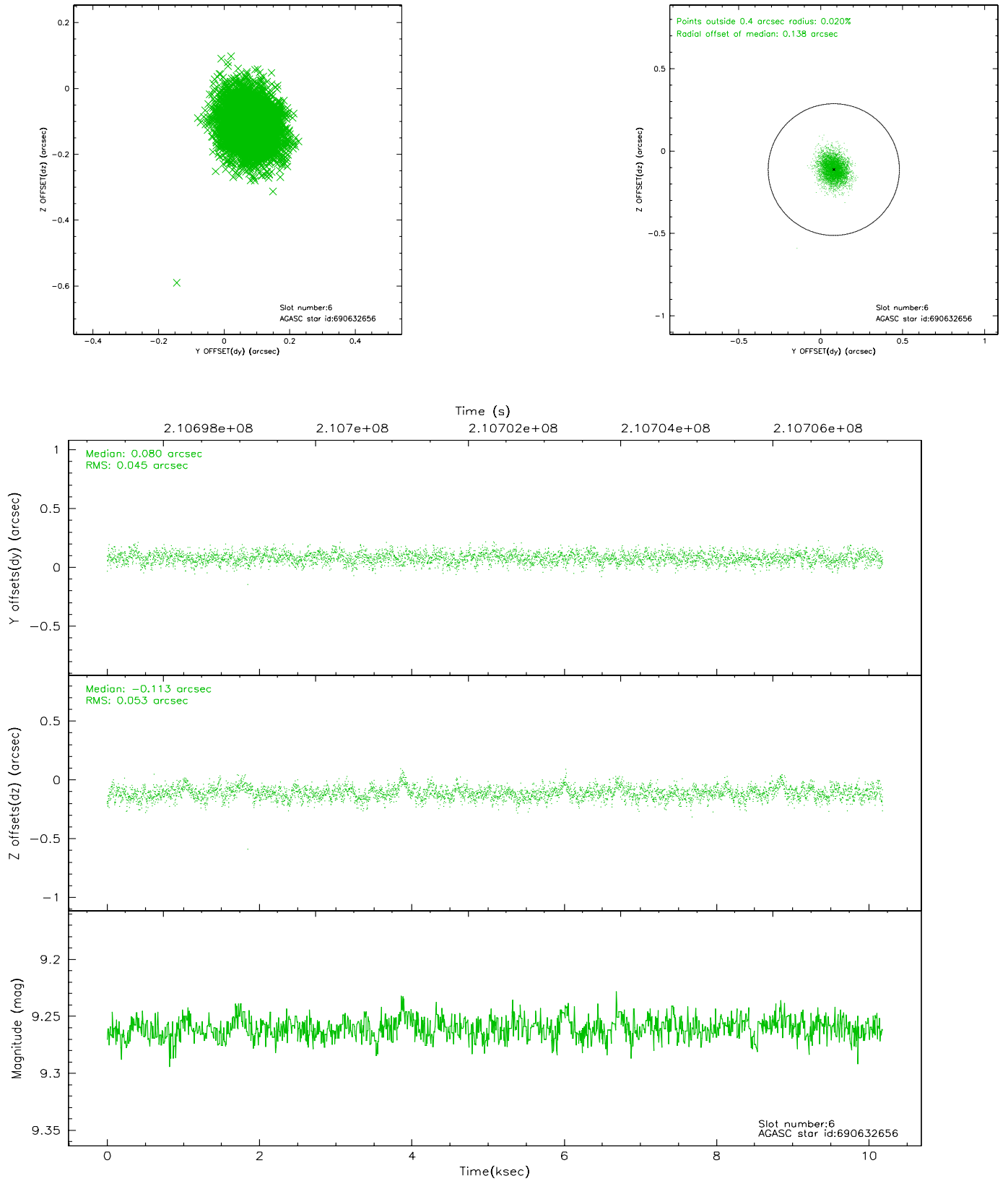
2.4.2 Slot 4



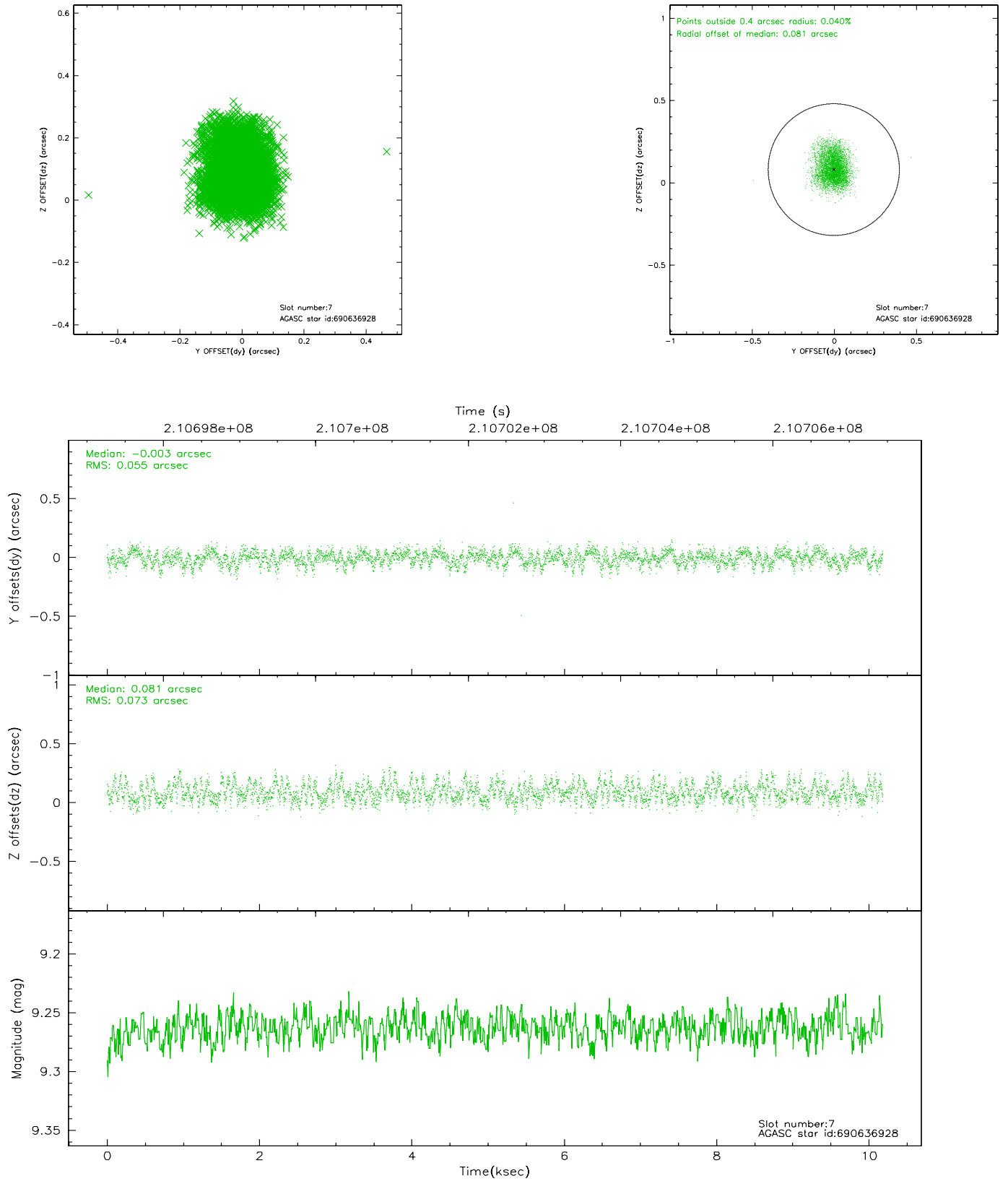
2.4.3 Slot 5



2.4.4 Slot 6

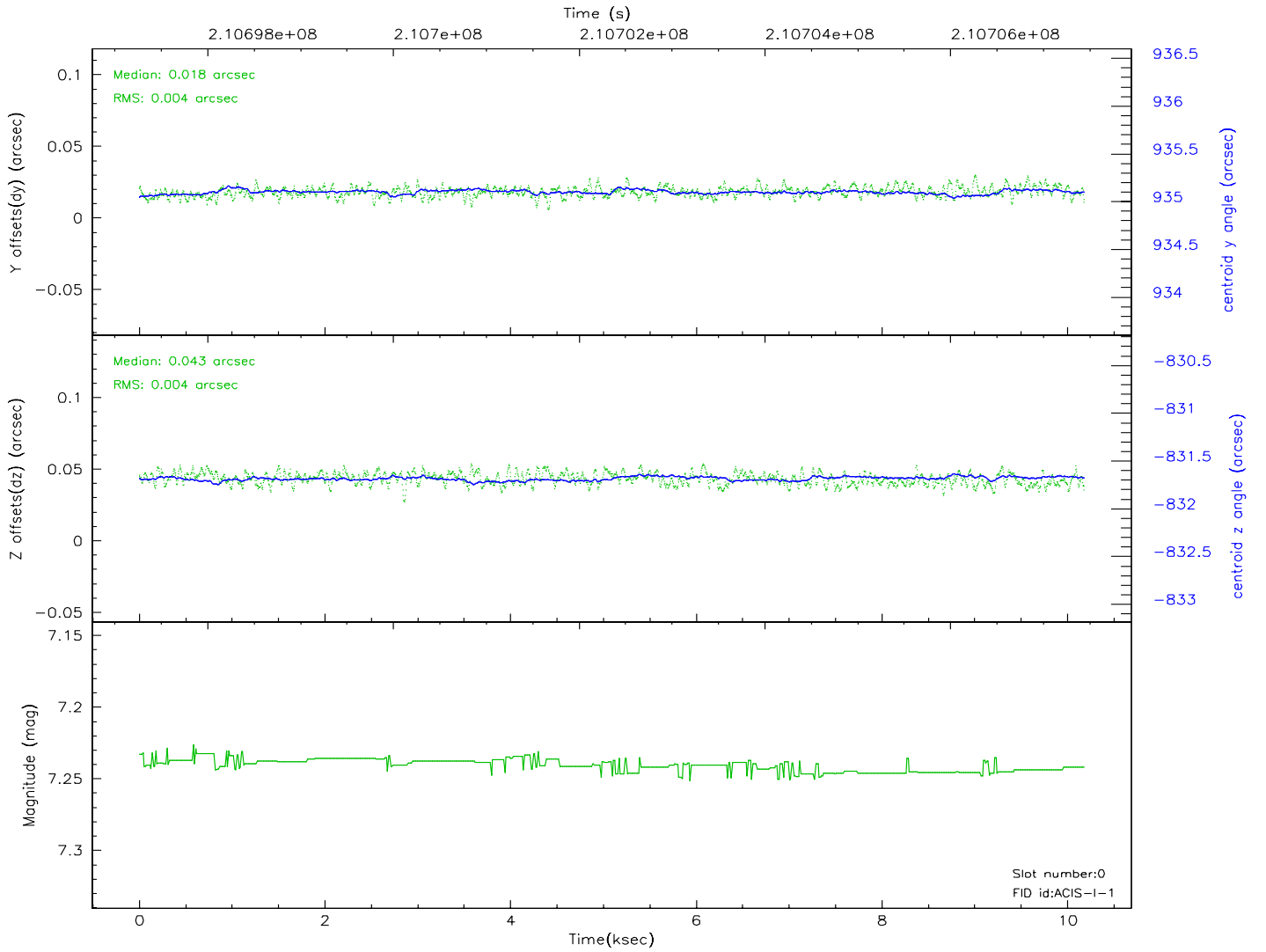
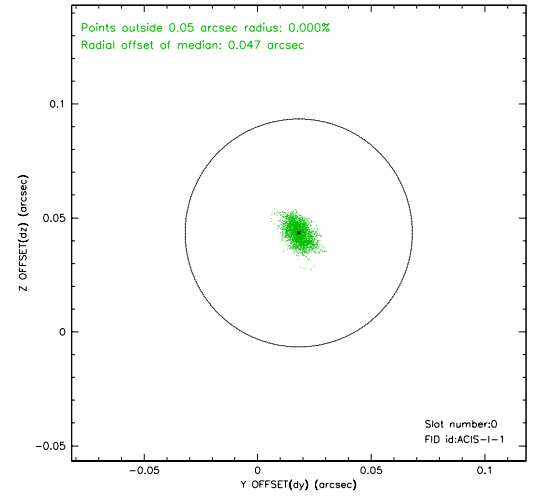
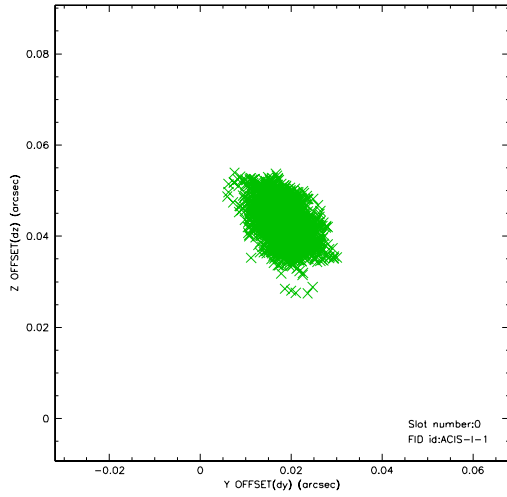


2.4.5 Slot 7

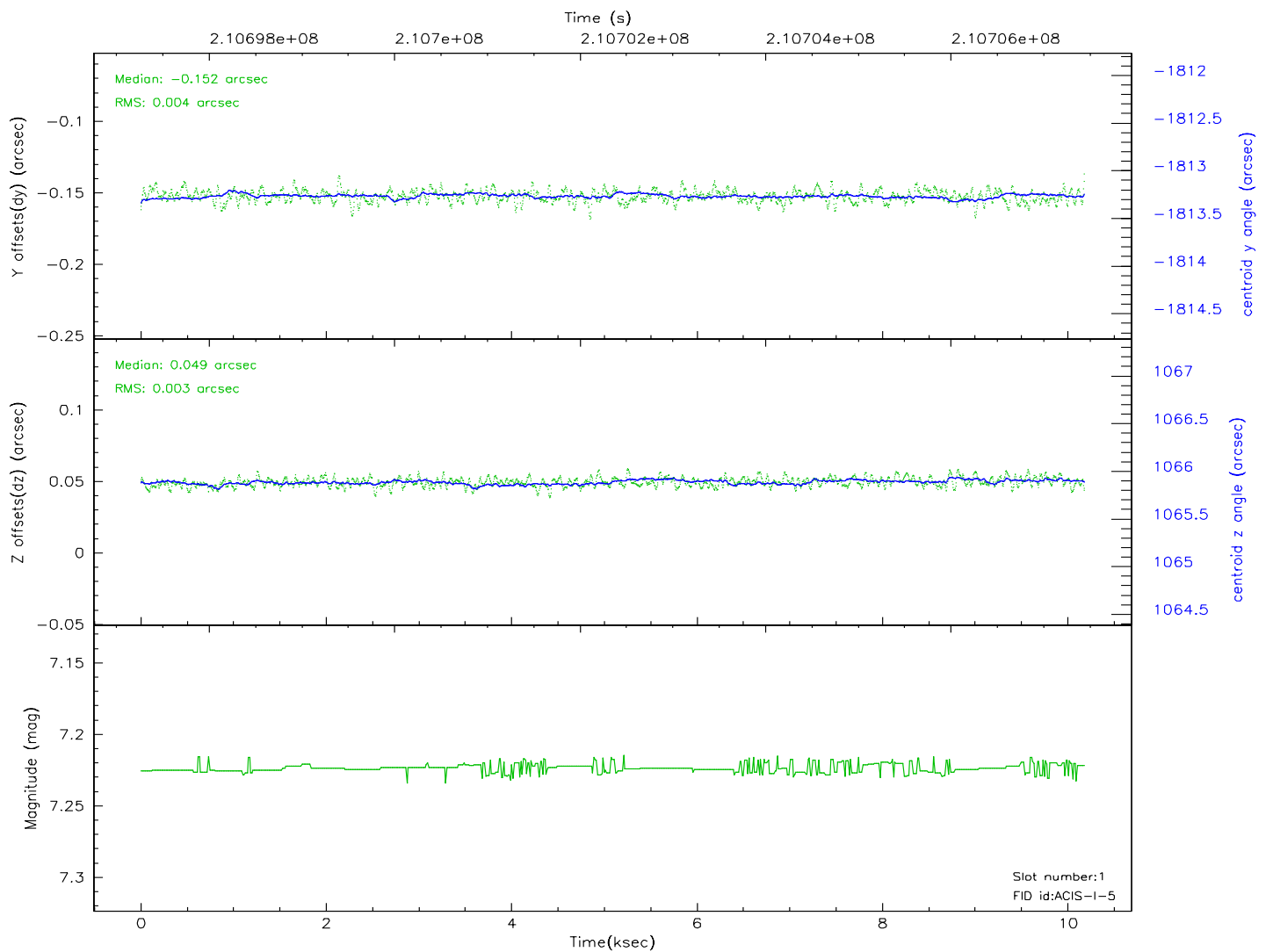
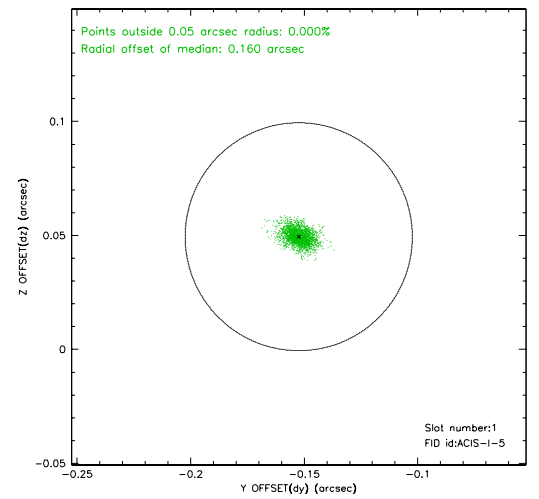
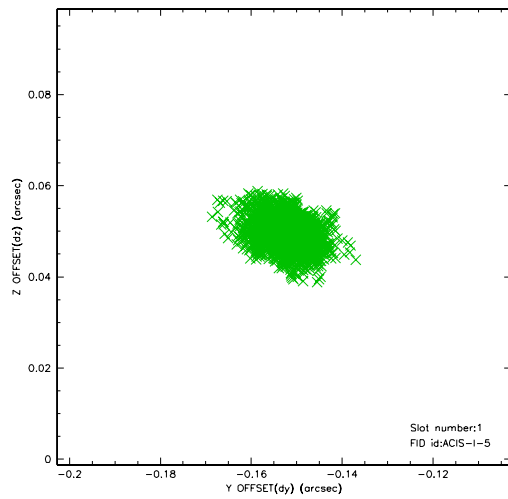


2.5 FID Slots

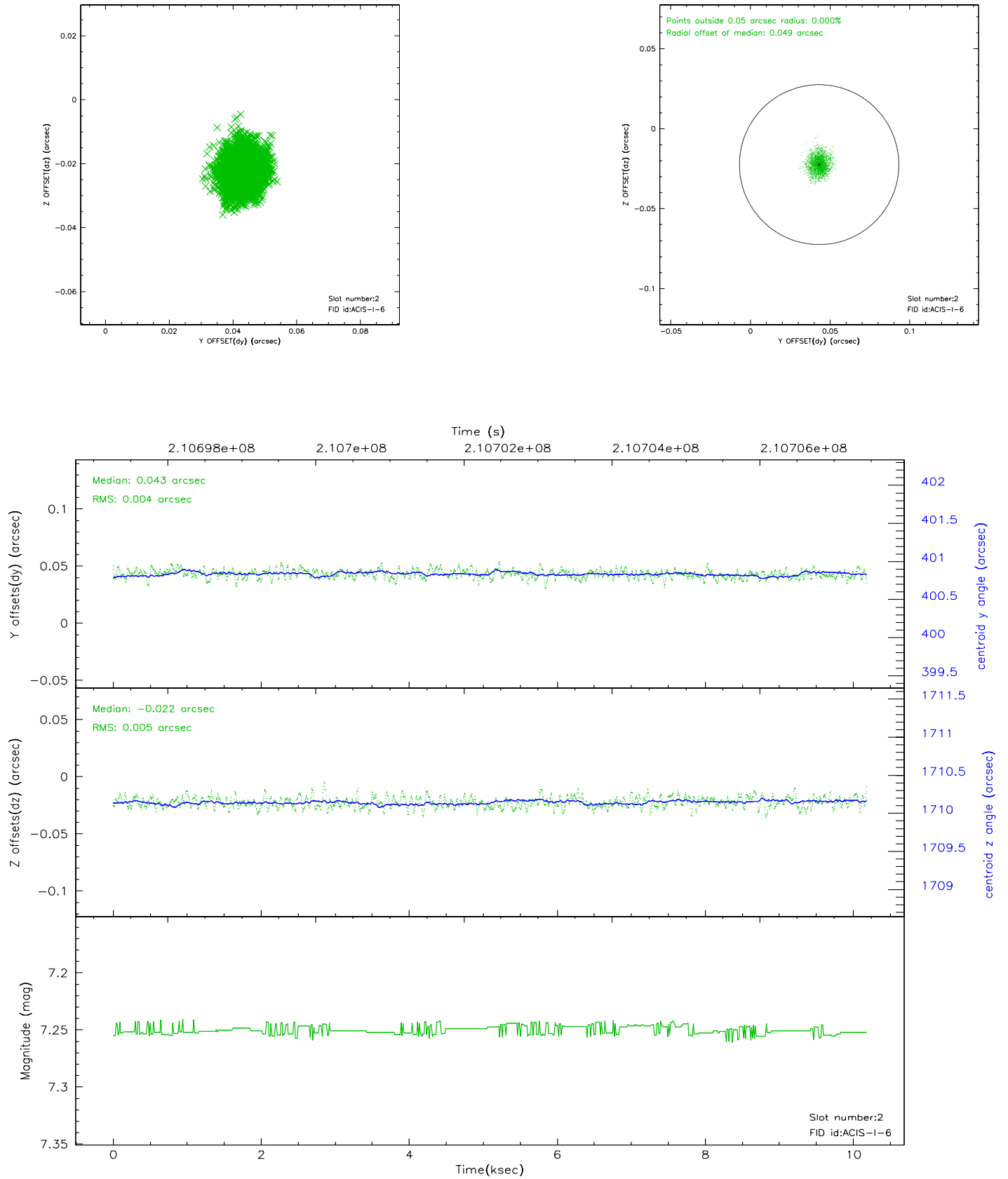
2.5.1 Slot 0



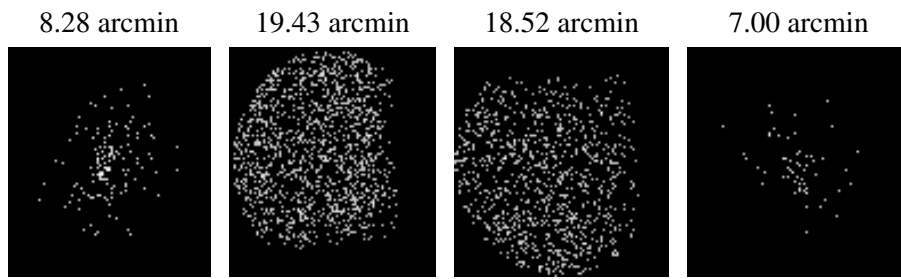
2.5.2 Slot 1



2.5.3 Slot 2



3 Point Sources



A Summary

A.1 Status

V&V Scientist	Beth Sundheim
V&V Date (YYYY-MM-DD)	2006.04.19
V&V Edition	1
V&V Disposition and Status	OK
V&V Charge Time	10.179

A.2 Comments