

# V&V Reference Report

## L2 ASCDS Version : 7.6.7.2

Observation 4858 - L2 Version 001  
Chandra X-Ray Center

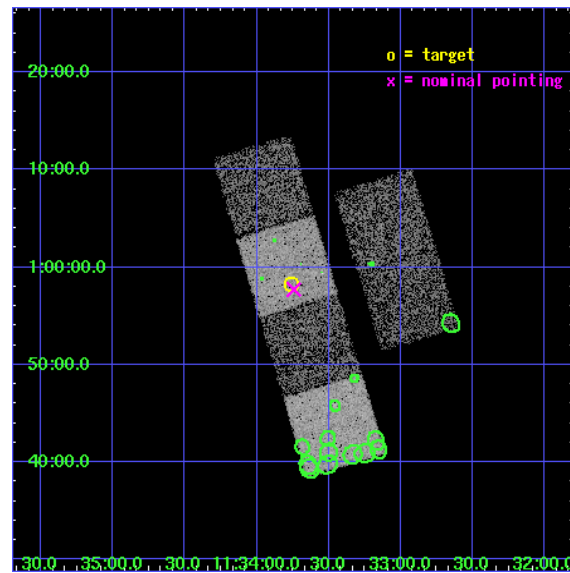
L2 Processing Date : May 27 2006

## Contents

<b>1</b>	<b>Front</b>	<b>2</b>
<b>2</b>	<b>OBI</b>	<b>3</b>
2.1	OBI . . . . .	3
2.1.1	Images . . . . .	3
2.1.2	Bias . . . . .	3
2.1.3	Parameters . . . . .	4
2.1.4	Events . . . . .	4
2.2	Compared Parameters . . . . .	5
2.3	Aspect . . . . .	6
2.4	Star Slots . . . . .	9
2.4.1	Slot 3 . . . . .	9
2.4.2	Slot 4 . . . . .	10
2.4.3	Slot 5 . . . . .	11
2.4.4	Slot 6 . . . . .	12
2.4.5	Slot 7 . . . . .	13
2.5	FID Slots . . . . .	14
2.5.1	Slot 0 . . . . .	14
2.5.2	Slot 1 . . . . .	15
2.5.3	Slot 2 . . . . .	16
<b>3</b>	<b>Point Sources</b>	<b>17</b>
<b>A</b>	<b>Summary</b>	<b>18</b>
A.1	Status . . . . .	18
A.2	Comments . . . . .	18

# 1 Front

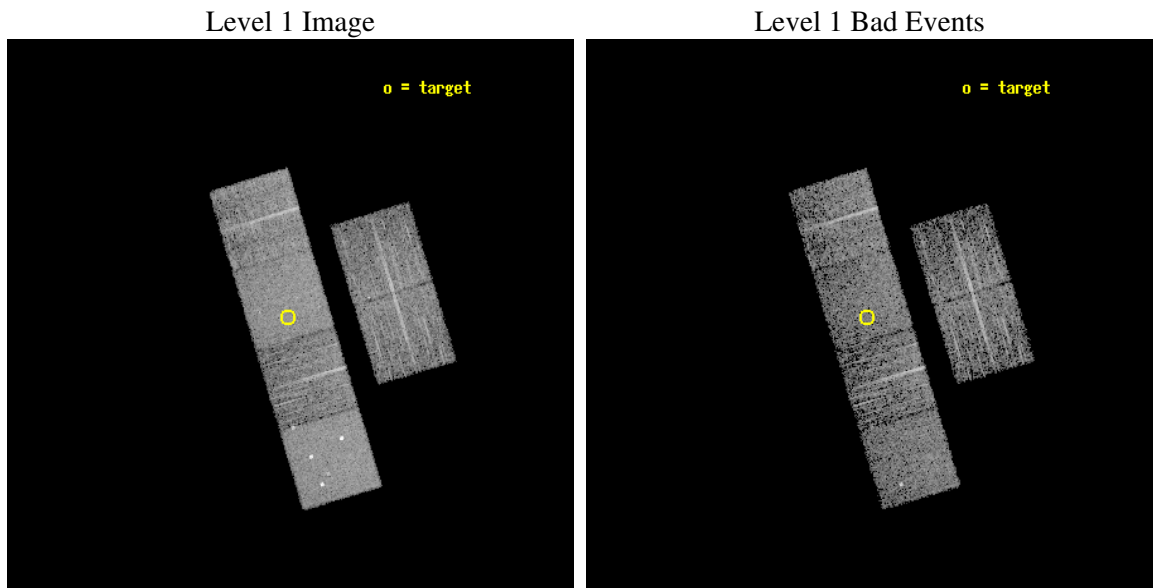
seq_num	700940
obs_id	4858
title	X-ray Properties of Dust Reddened Quasars from the Sloan Digital Sky Survey
observer	Gordon Richards
object	SDSS J113345.62+005813.4
dtcycle	0
cycle	P
ra_targ	173.44
dec_targ	0.970389
ra_nom	173.43571962776
dec_nom	0.96187886426736
roll_nom	253.19691535678
revision	2
ontime	4310.3999839425
liveltime	4255.8191039346
ontime2	4310.3999839425
ontime3	4310.3999839425
ontime5	4310.3999839425
ontime6	4310.3999839425
ontime7	4310.3999839425
ontime8	4310.3999839425
l2events	50206



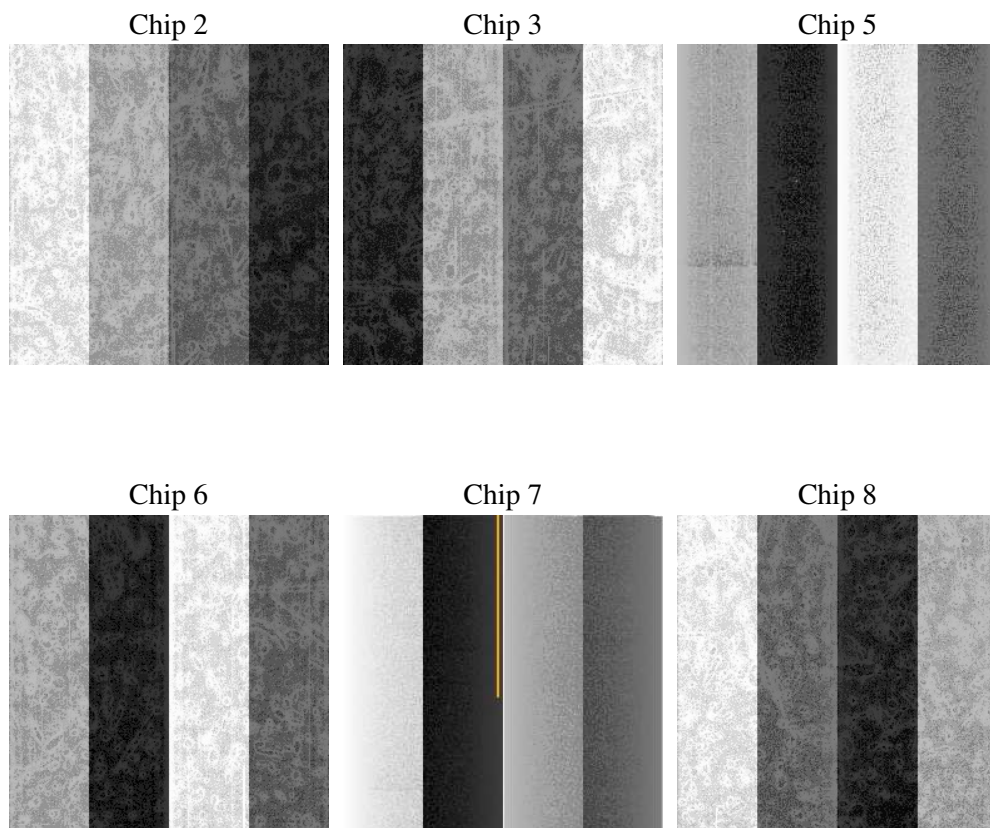
## 2 OBI

### 2.1 OBI

#### 2.1.1 Images



#### 2.1.2 Bias



### 2.1.3 Parameters

obi_num	0
ascdsver	7.6.7.2
caldsver	3.2.2
date	2006-05-27T06:13:53
revision	2

sched_exp_time	4350.000000
ontime	4317.024859786
ontime2	4313.7838197947
ontime3	4317.024859786
ontime5	4317.024859786
ontime6	4317.024859786
ontime7	4317.024859786
ontime8	4317.024859786
l1events	218178

### 2.1.4 Events

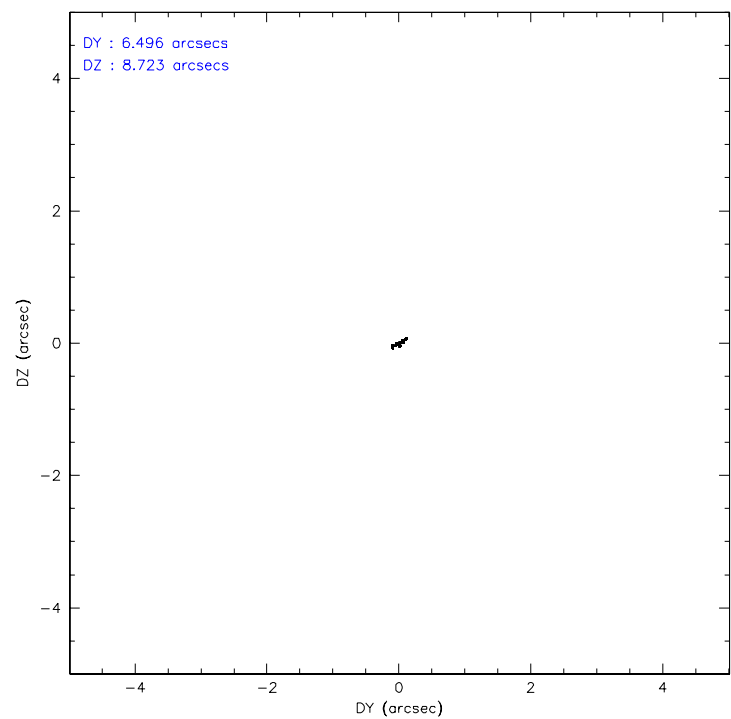
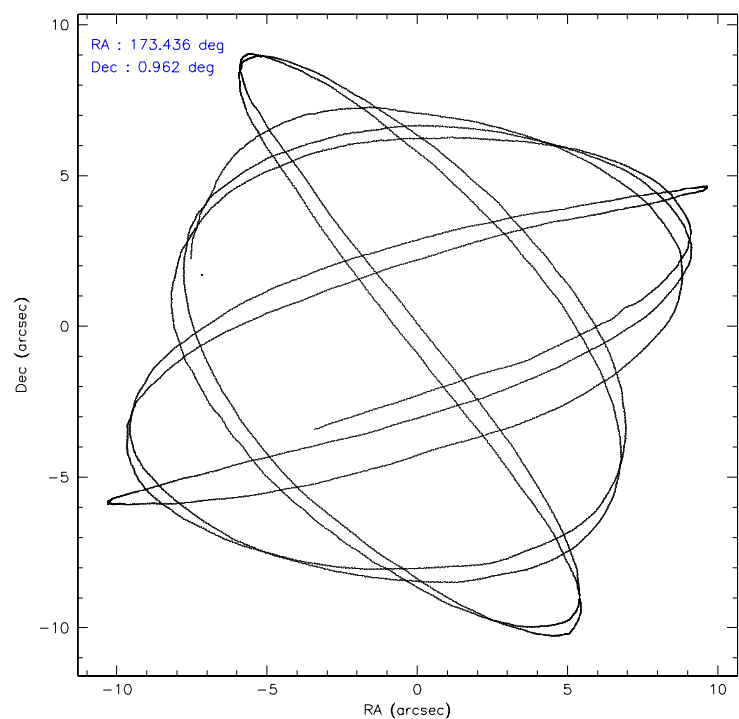
	ccd 2	ccd 3	ccd 5	ccd 6	ccd 7	ccd 8
level 1 events	31061	29665	47138	30701	41161	38452
rejected events	26920	25213	24954	26337	25137	29873
rejected %	86%	84%	52%	85%	61%	77%

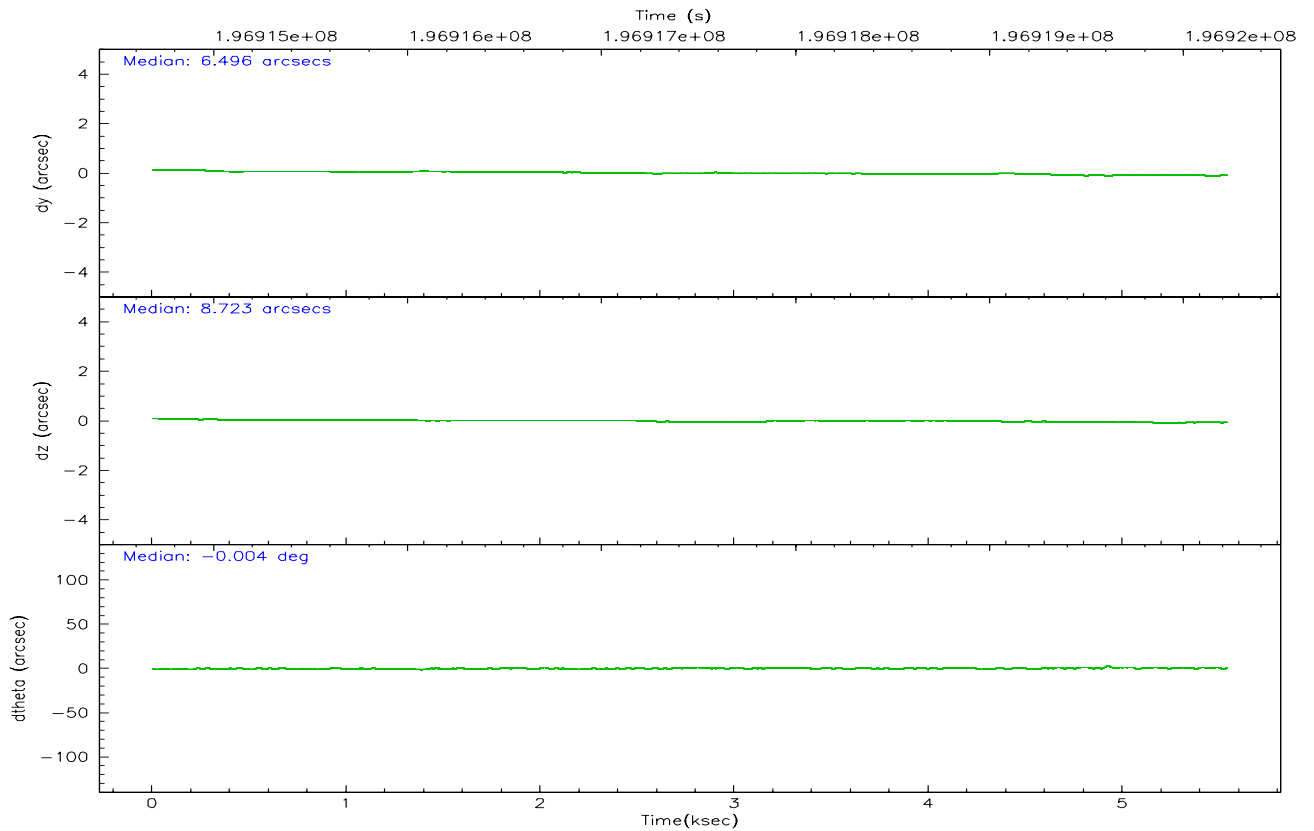
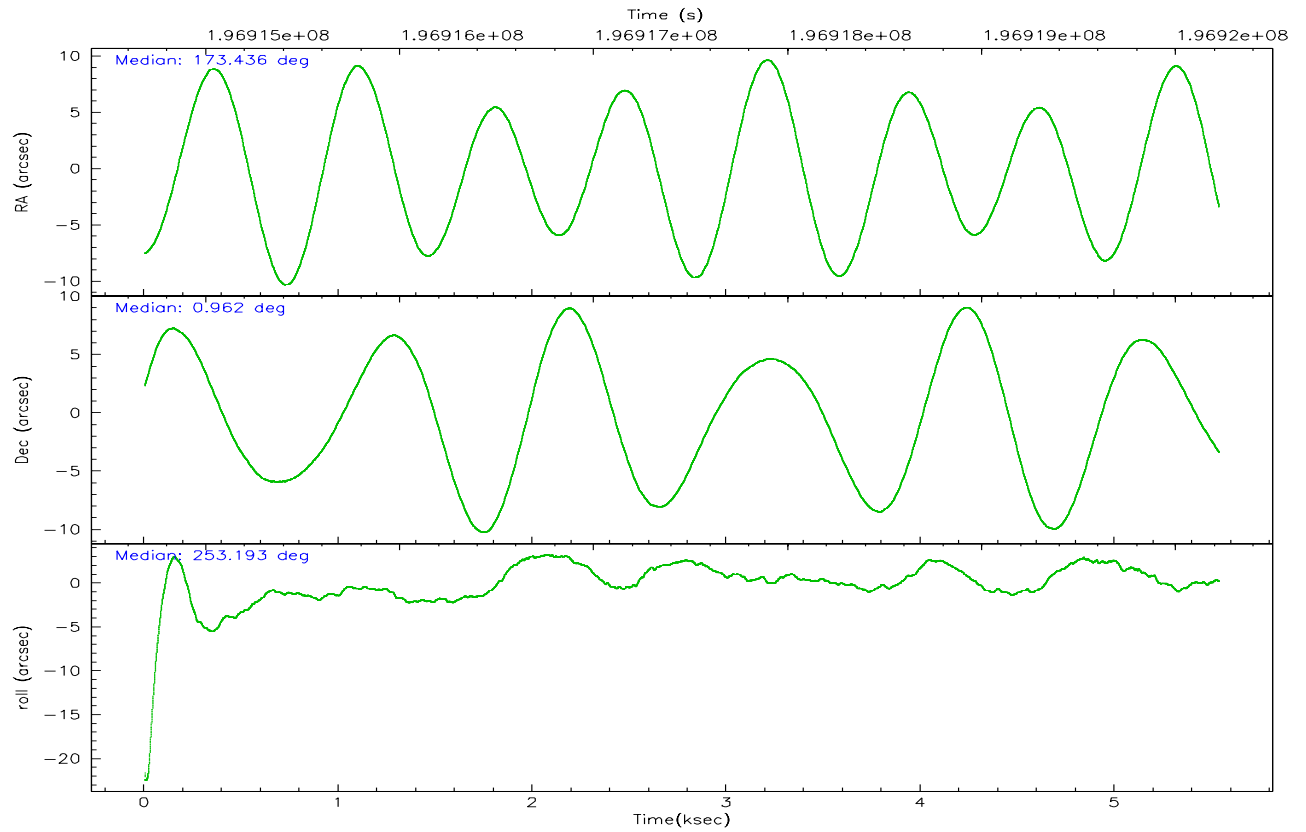
	ccd 2	ccd 3	ccd 5	ccd 6	ccd 7	ccd 8
grade 0 events	1983	2219	3119	1900	946	3025
	6%	7%	6%	6%	2%	7%
grade 1 events	24	24	71	19	26	32
	0%	0%	0%	0%	0%	0%
grade 2 events	796	780	6726	850	3994	1803
	2%	2%	14%	2%	9%	4%
grade 3 events	355	402	479	396	786	863
	1%	1%	1%	1%	1%	2%
grade 4 events	397	400	400	377	716	813
	1%	1%	0%	1%	1%	2%
grade 5 events	1215	1304	2190	1344	2633	1729
	3%	4%	4%	4%	6%	4%
grade 6 events	612	660	11492	854	9611	2088
	1%	2%	24%	2%	23%	5%
grade 7 events	25679	23876	22661	24961	22449	28099
	82%	80%	48%	81%	54%	73%

## 2.2 Compared Parameters

Parameter	Planned	Actual	Parameter	Planned	Actual
Instrument	ACIS	ACIS	Obspar format version number	6	6
Detector	ACIS-235678	ACIS-235678	Obspar file type	PREDICTED	ACTUAL
Grating	NONE	NONE	Obspar update status	NONE	UPDATED
Data mode	FAINT	FAINT	On-chip summing requested	N	N
Observation mode	POINTING	POINTING	Subarray requested	NONE	NONE
Pointing RA	173.429048	173.4357196277637	Alternating exposures requested	N	N
Pointing Dec	0.988194	0.9618788642673639	Primary exposure time	0.000000	3.2
Pointing Roll	253.040394	253.1969153567777			
SIM focus pos (mm)	-0.684267	-0.6828225247311905			
SIM defocus (mm)	0	0.001444936568705701			
SIM translation stage pos (mm)	-190.132523	-190.1425803651734			
SIM translation stage offset (mm)	0	0.01005778216563158			
Observation start time	196915881.184000	196914416.44338			
Observation start date	2004-03-29T02:50:17	2004-03-29T02:26:56			
Observation end time	196920231.184000	196921055.36867			
Observation end date	2004-03-29T04:02:47	2004-03-29T04:17:35			
Read mode	TIMED	TIMED			

### 2.3 Aspect





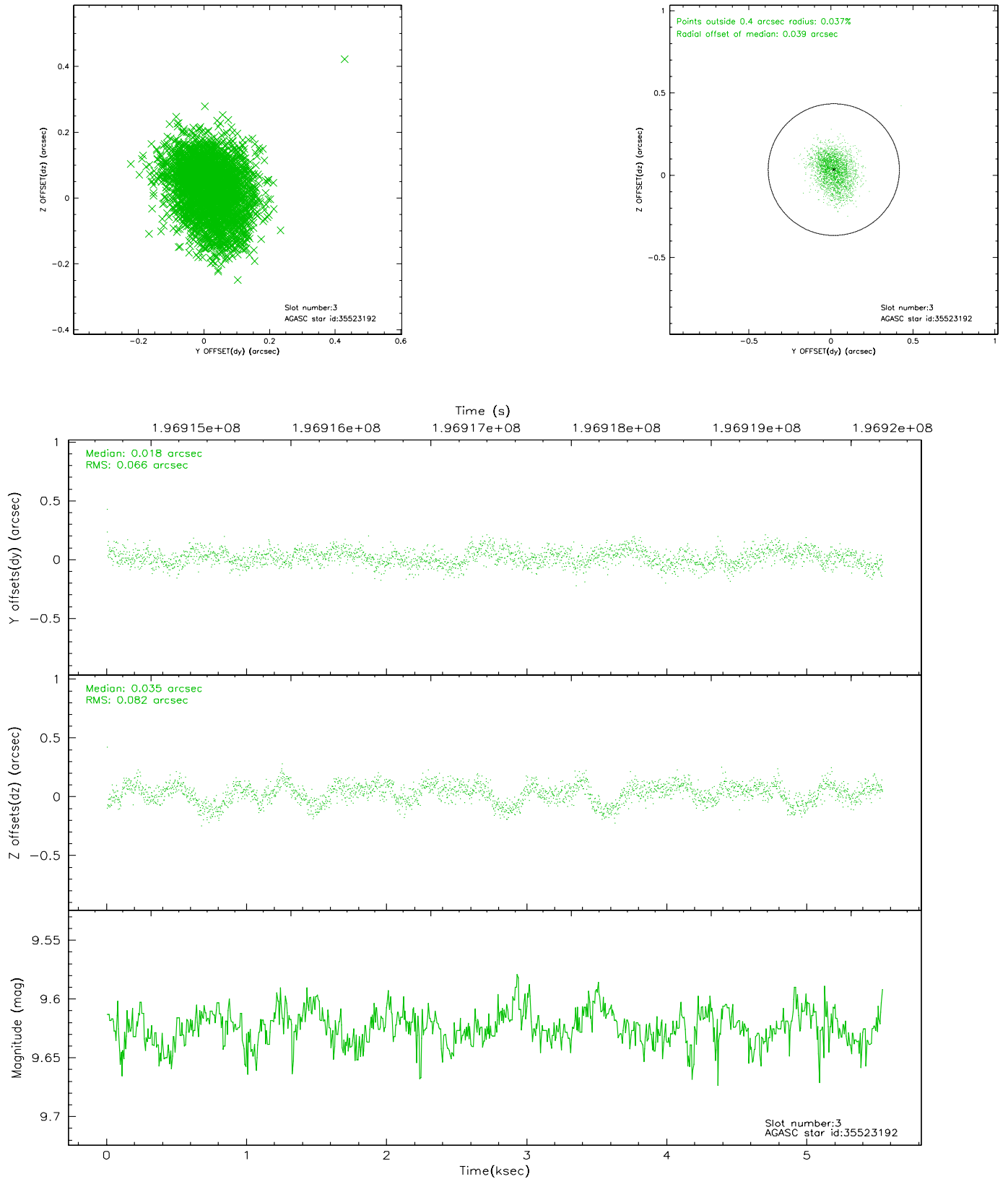
### Slot Statistics

slot	status	id	mag	n_pts	med_dy	med_dz	dr1	dr2	ra	dec	mean_y	mean_z
0	FID	ACIS-S-2	7.10	1351	-0.028	-0.024	0.006	0.011	0.000000	0.000000	-759.27	-1729.90
1	FID	ACIS-S-4	7.20	1351	0.040	0.020	0.005	0.008	0.000000	0.000000	2153.59	177.50
2	FID	ACIS-S-5	7.23	1351	-0.043	0.013	0.006	0.010	0.000000	0.000000	-1810.73	172.41
3	GUIDE	35523192	9.62	2700	0.018	0.035	0.112	0.182	173.097773	0.596002	1699.18	-728.75
4	GUIDE	35523488	8.11	2700	-0.050	0.010	0.060	0.097	173.259338	1.285912	-845.52	-897.19
5	GUIDE	35523696	9.78	2702	0.002	-0.003	0.106	0.187	173.049226	0.720444	1321.34	-1027.20
6	GUIDE	35523952	8.66	2698	0.010	-0.037	0.072	0.113	173.151656	1.340213	-919.33	-1325.38
7	GUIDE	35528048	9.44	2699	0.027	0.000	0.092	0.153	173.938879	1.190096	-1230.26	1542.56

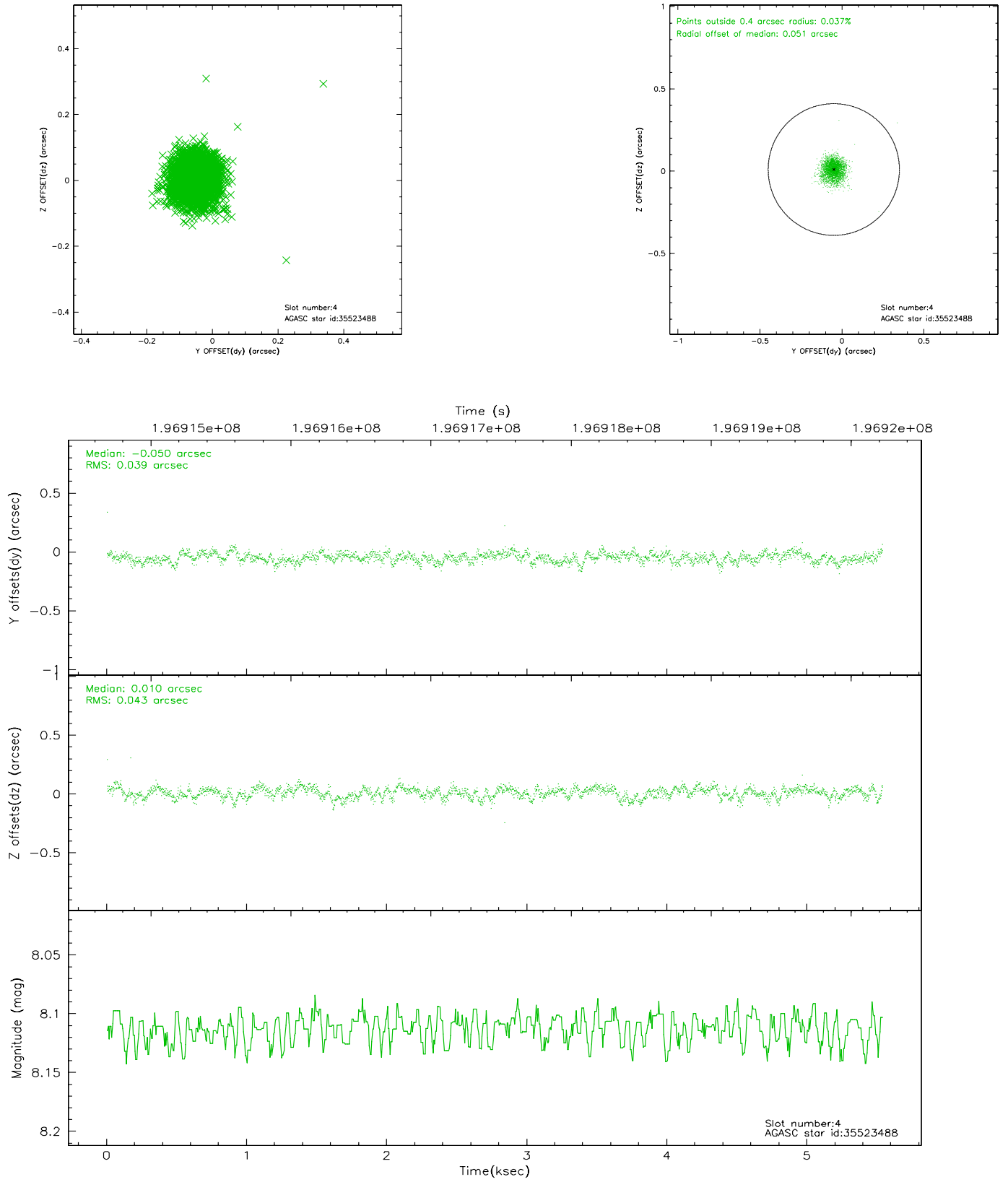


## 2.4 Star Slots

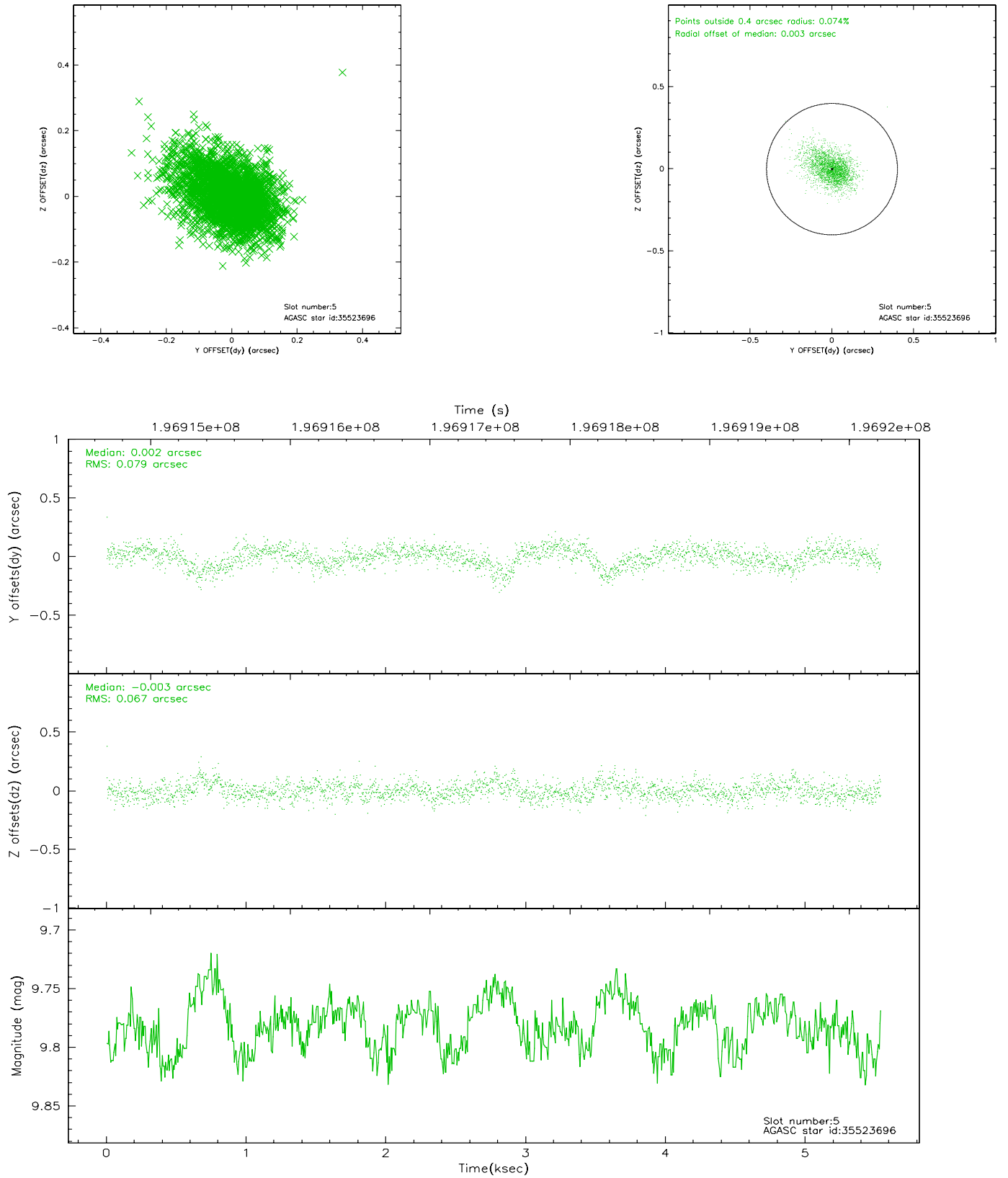
### 2.4.1 Slot 3



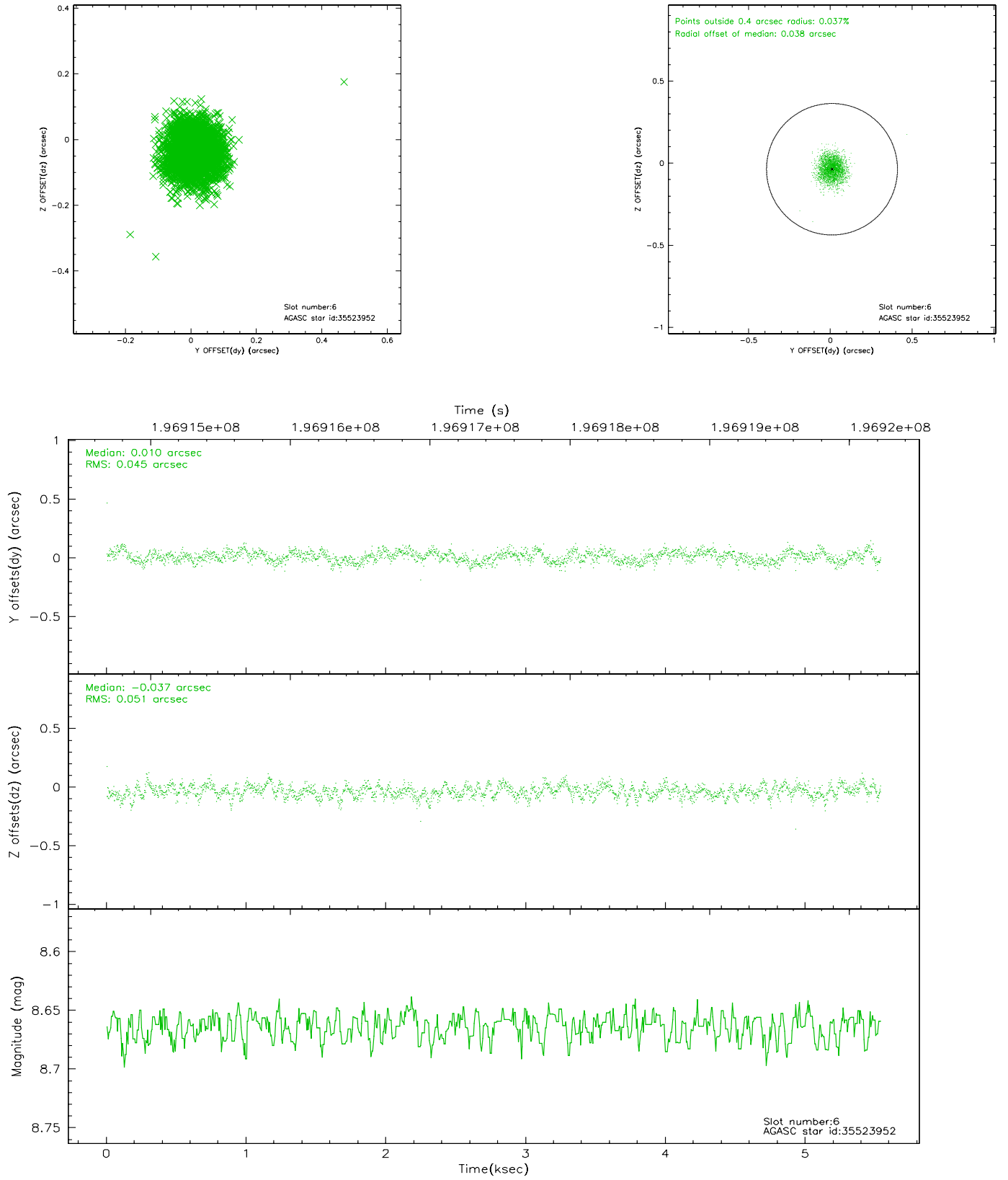
## 2.4.2 Slot 4



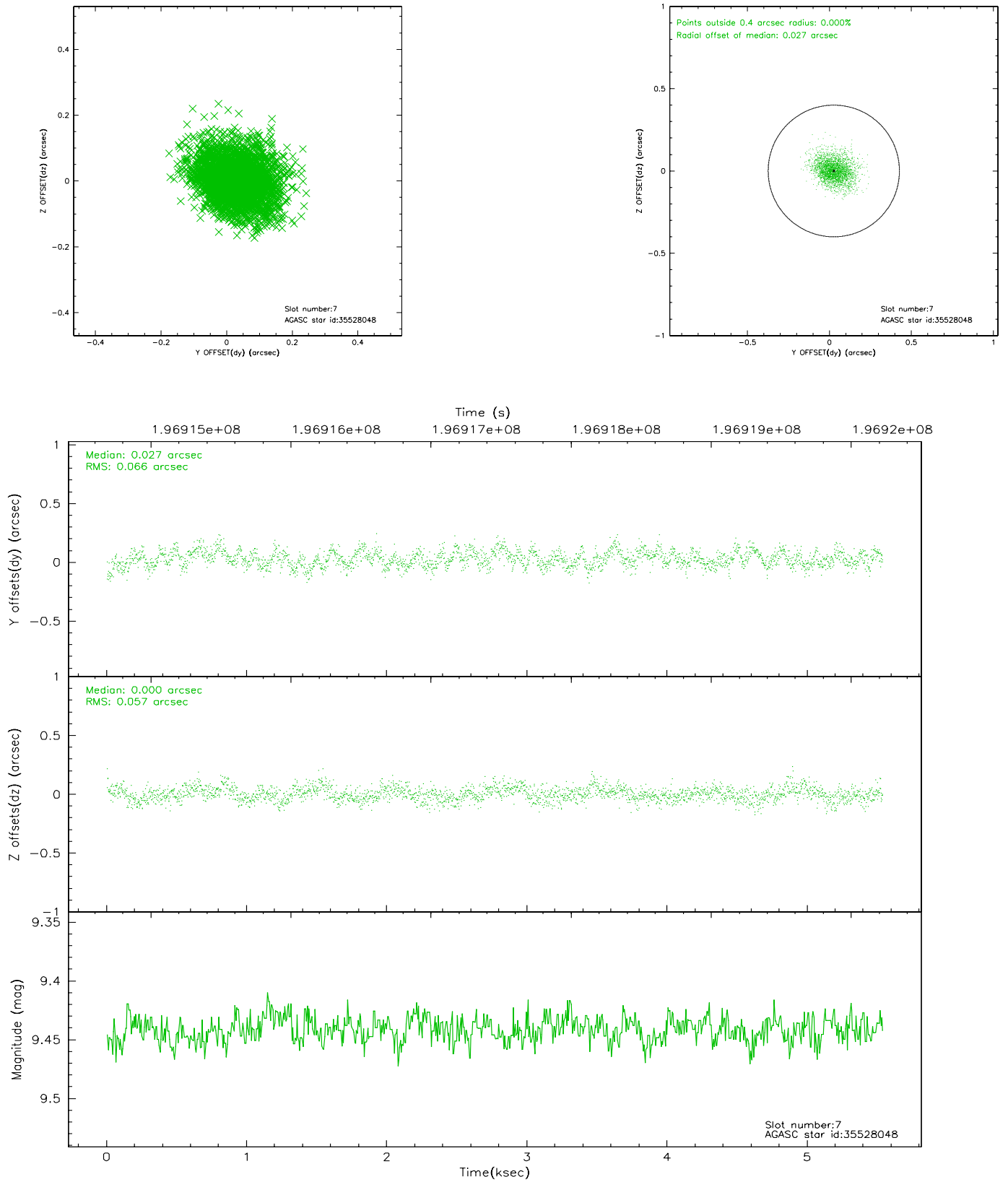
### 2.4.3 Slot 5



## 2.4.4 Slot 6

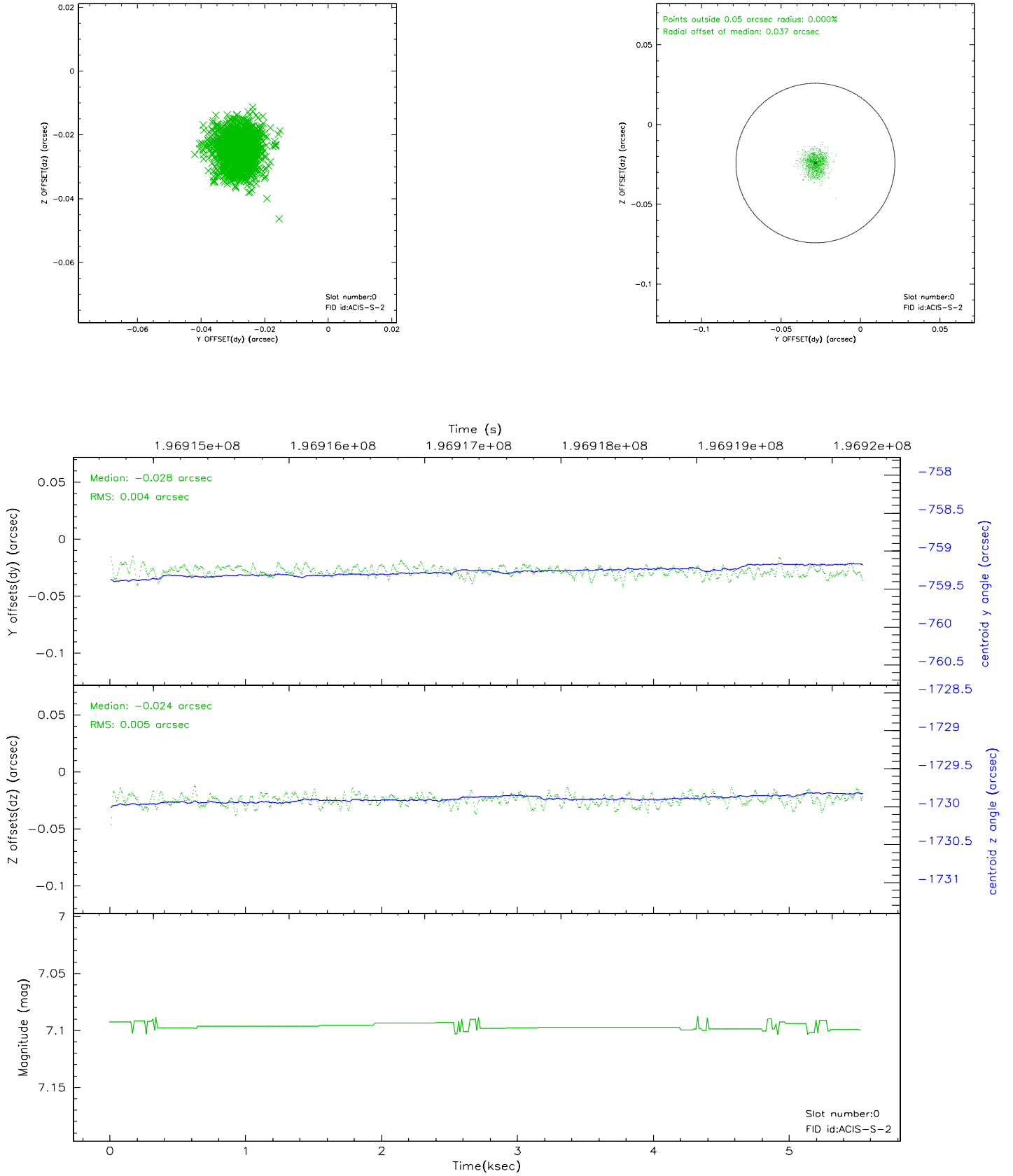


## 2.4.5 Slot 7

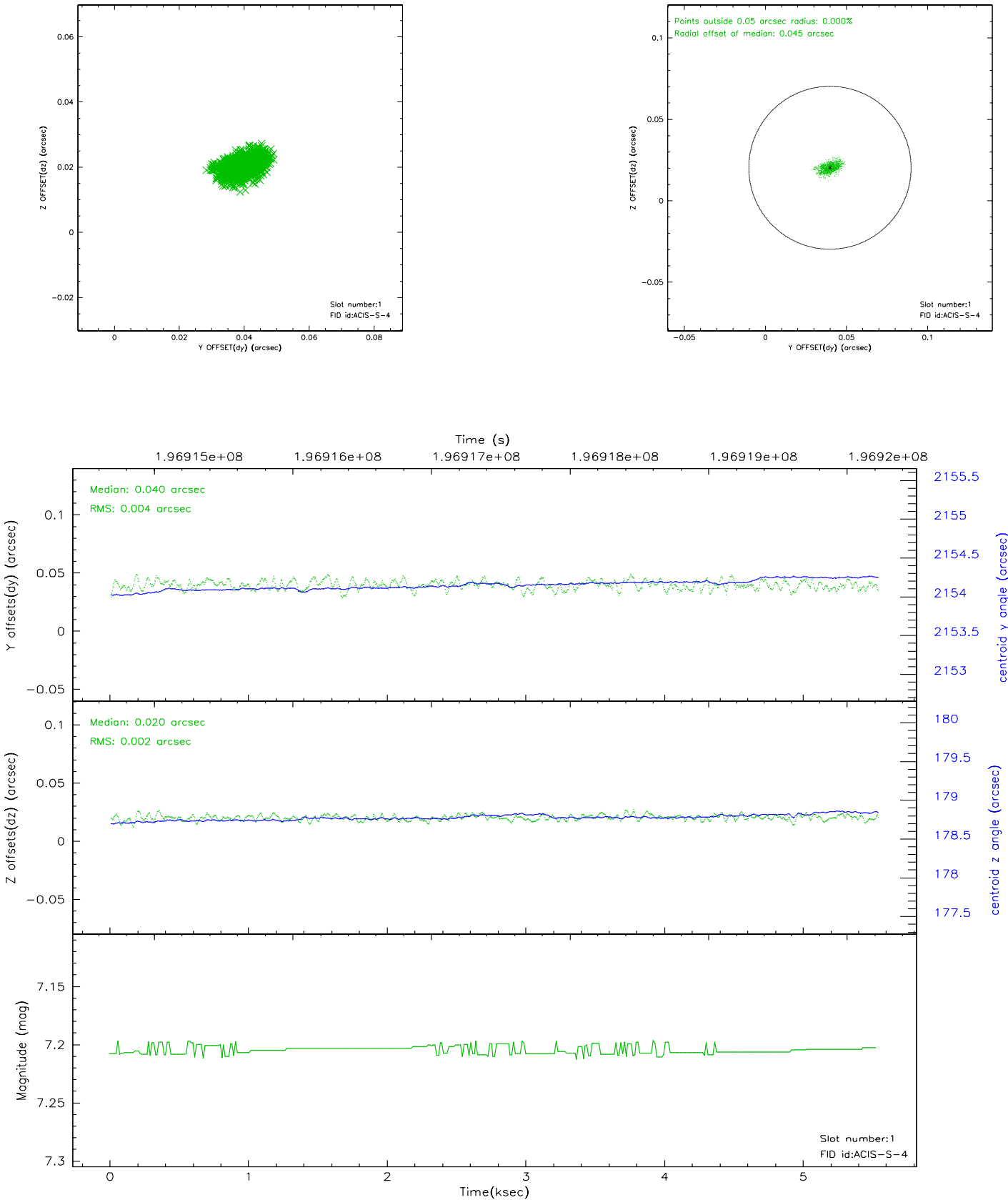


## 2.5 FID Slots

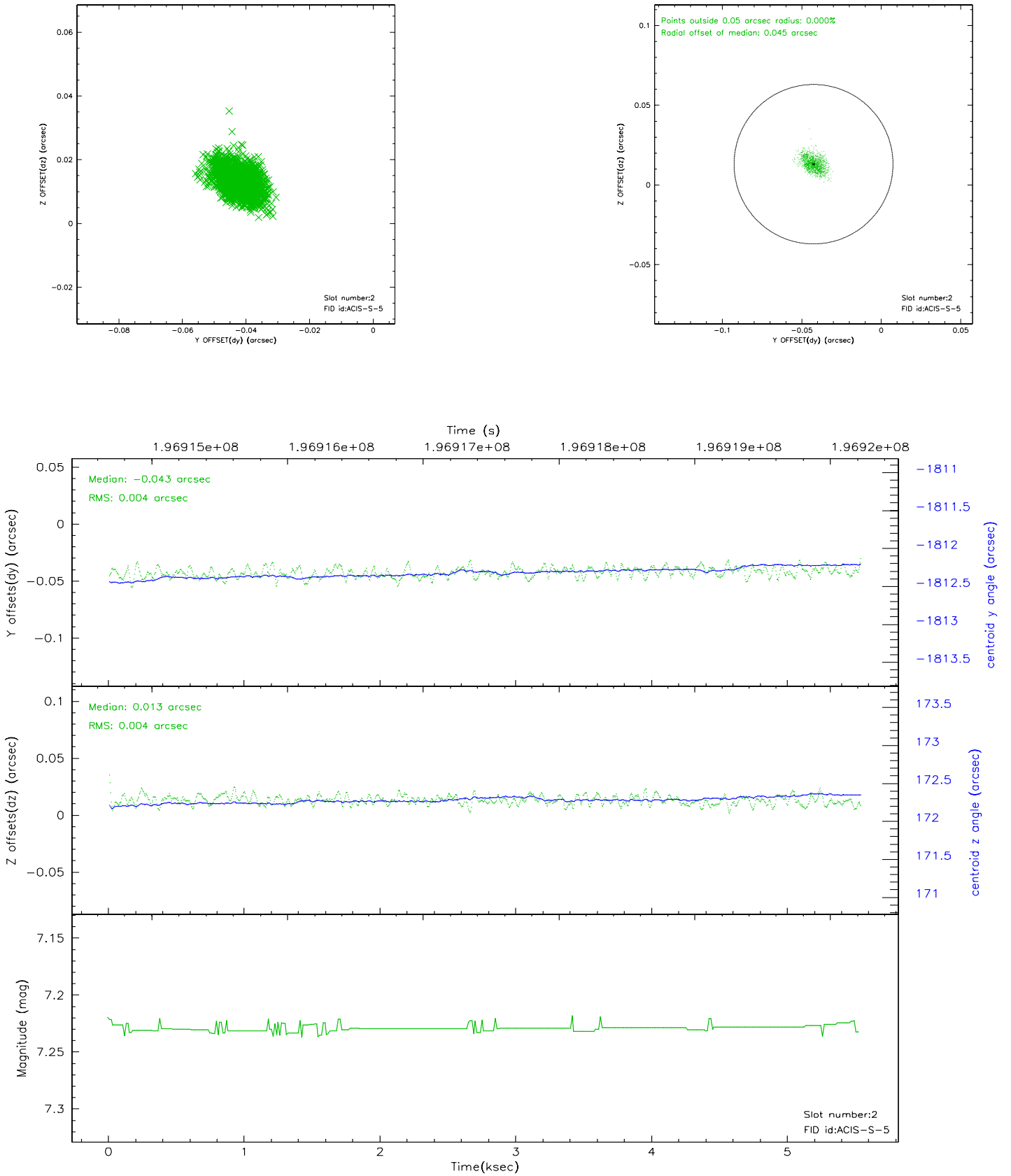
### 2.5.1 Slot 0



2.5.2 Slot 1

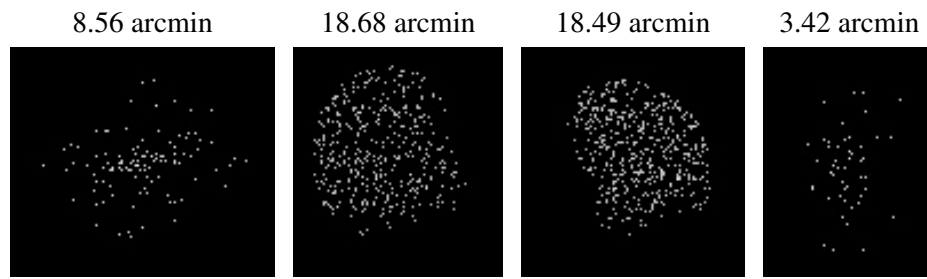


### 2.5.3 Slot 2





### 3 Point Sources



## A Summary

### A.1 Status

V&V Scientist	Beth Sundheim
V&V Date (YYYY-MM-DD)	2006.05.30
V&V Edition	1
V&V Disposition and Status	OK
V&V Charge Time	4.313

### A.2 Comments