

V&V Reference Report

L2 ASCDS Version : 7.6.7.2

Observation 4843 - L2 Version 001
Chandra X-Ray Center

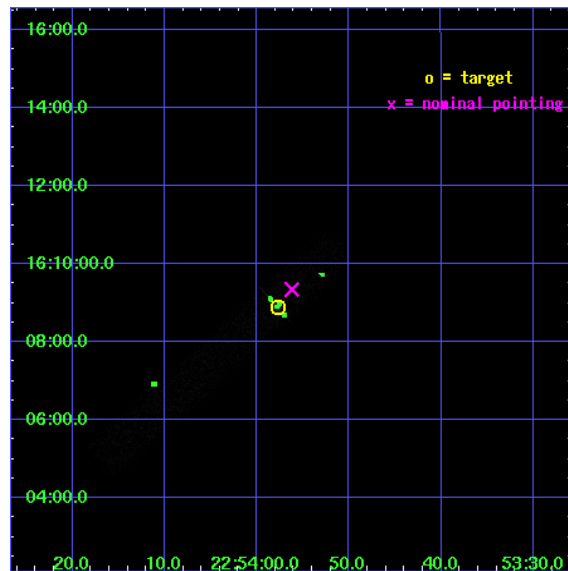
L2 Processing Date : Apr 26 2006

Contents

1	Front	2
2	OBI	3
2.1	OBI	3
2.1.1	Images	3
2.1.2	Bias	3
2.1.3	Parameters	4
2.1.4	Events	4
2.2	Compared Parameters	5
2.3	Aspect	6
2.4	Star Slots	9
2.4.1	Slot 3	9
2.4.2	Slot 4	10
2.4.3	Slot 5	11
2.4.4	Slot 6	12
2.4.5	Slot 7	13
2.5	FID Slots	14
2.5.1	Slot 0	14
2.5.2	Slot 1	15
2.5.3	Slot 2	16
3	Point Sources	17
A	Summary	18
A.1	Status	18
A.2	Comments	18

1 Front

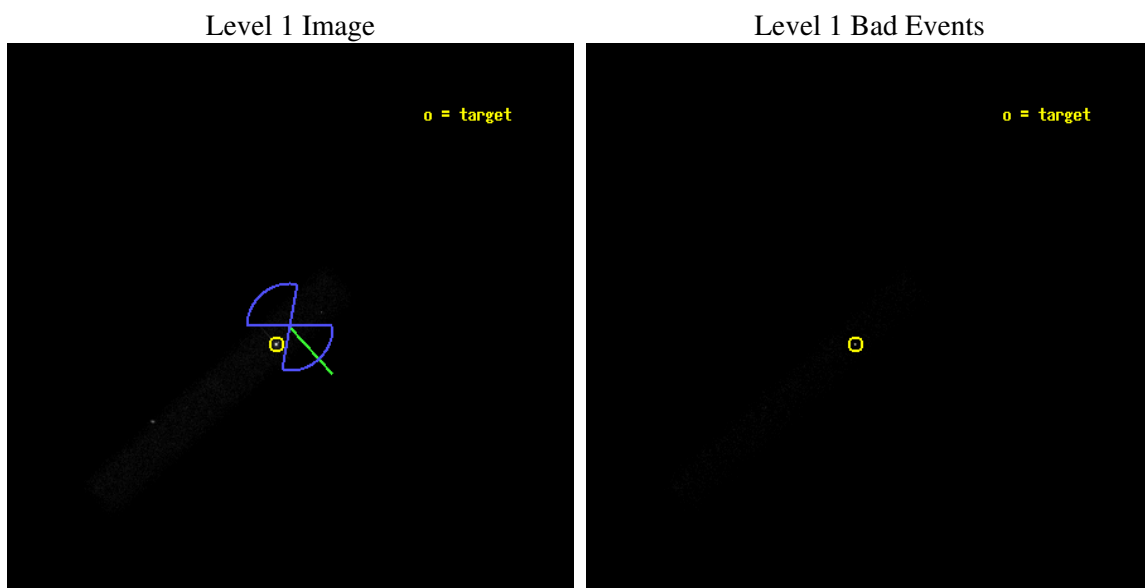
seq_num	700925
obs_id	4843
title	The Physics of Relativistic Jets: Chandra Imaging of Extended Jets in Gamma-loud Blazars
observer	Dr. FABRIZIO TAVECCHIO
object	3C454.3
dtcycle	0
cycle	P
ra_targ	343.490417
dec_targ	16.148194
ra_nom	343.48421175163
dec_nom	16.15577385687
roll_nom	138.23992707009
revision	2
ontime	20134.00030002
livetime	18260.475512443
ontime7	20134.00030002
l2events	33632



2 OBI

2.1 OBI

2.1.1 Images



2.1.2 Bias

Chip 7



2.1.3 Parameters

obi_num	2
ascdsver	7.6.7.2
caldbver	3.2.1
date	2006-04-26T11:46:29
revision	2

sched_exp_time	20000.000000
ontime	21059.435406327
ontime7	21059.435406327
l1events	51976

2.1.4 Events

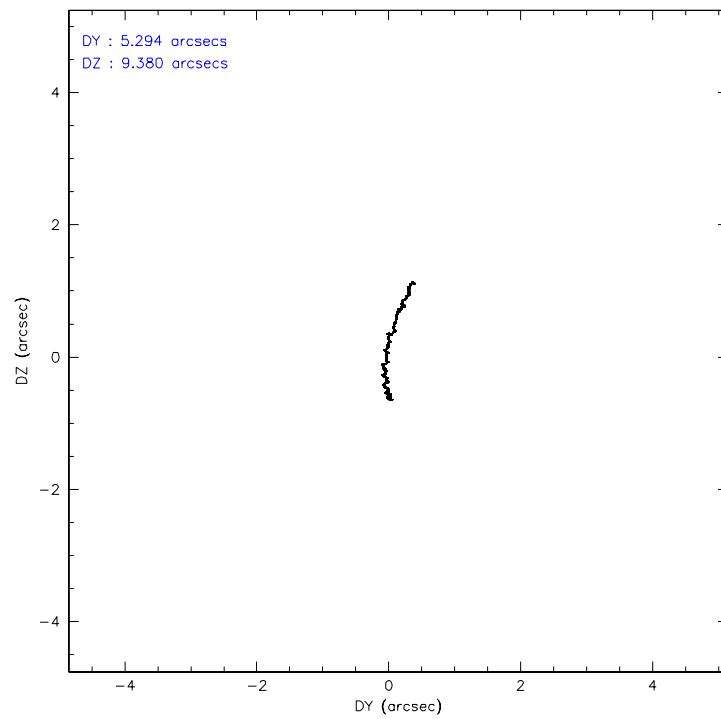
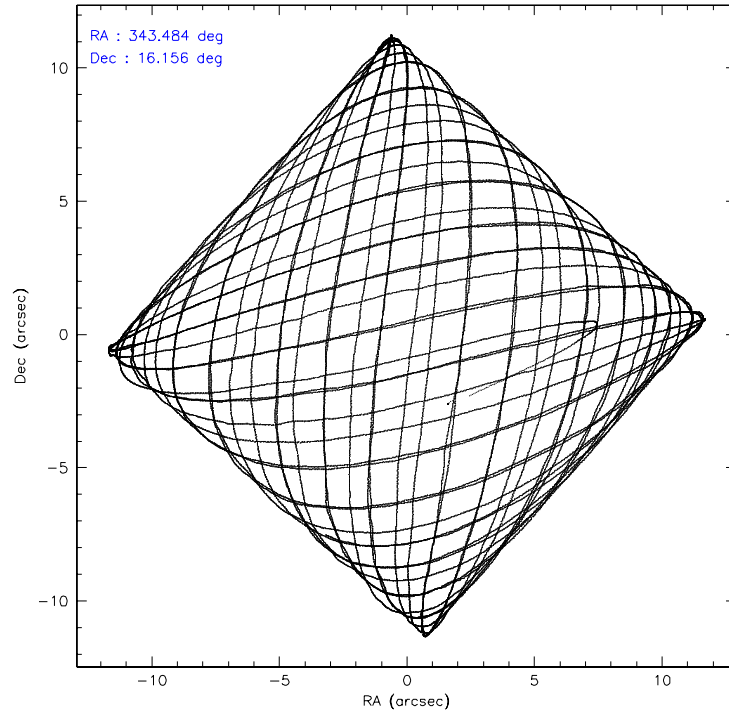
	ccd 7
level 1 events	51976
rejected events	17876
rejected %	34%

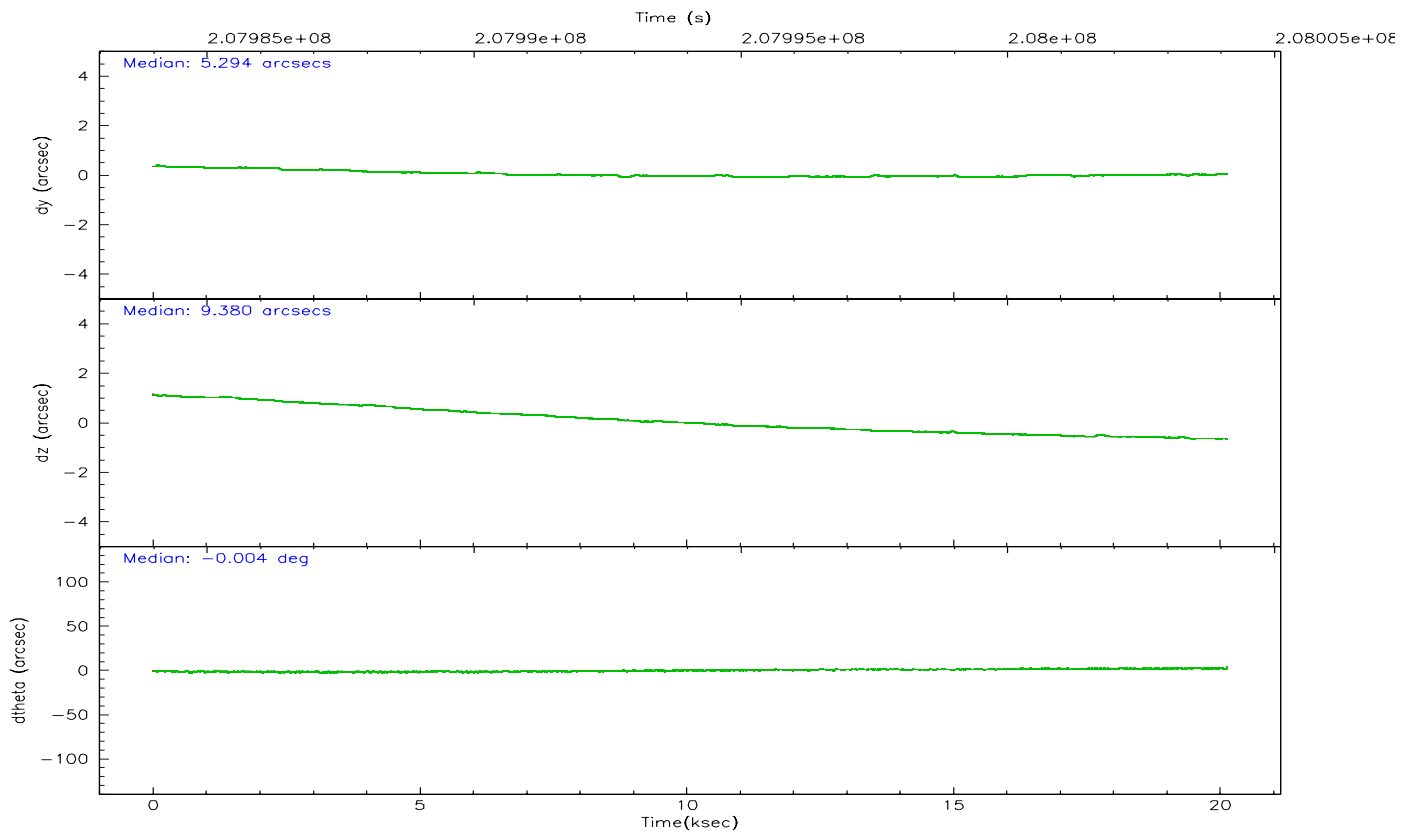
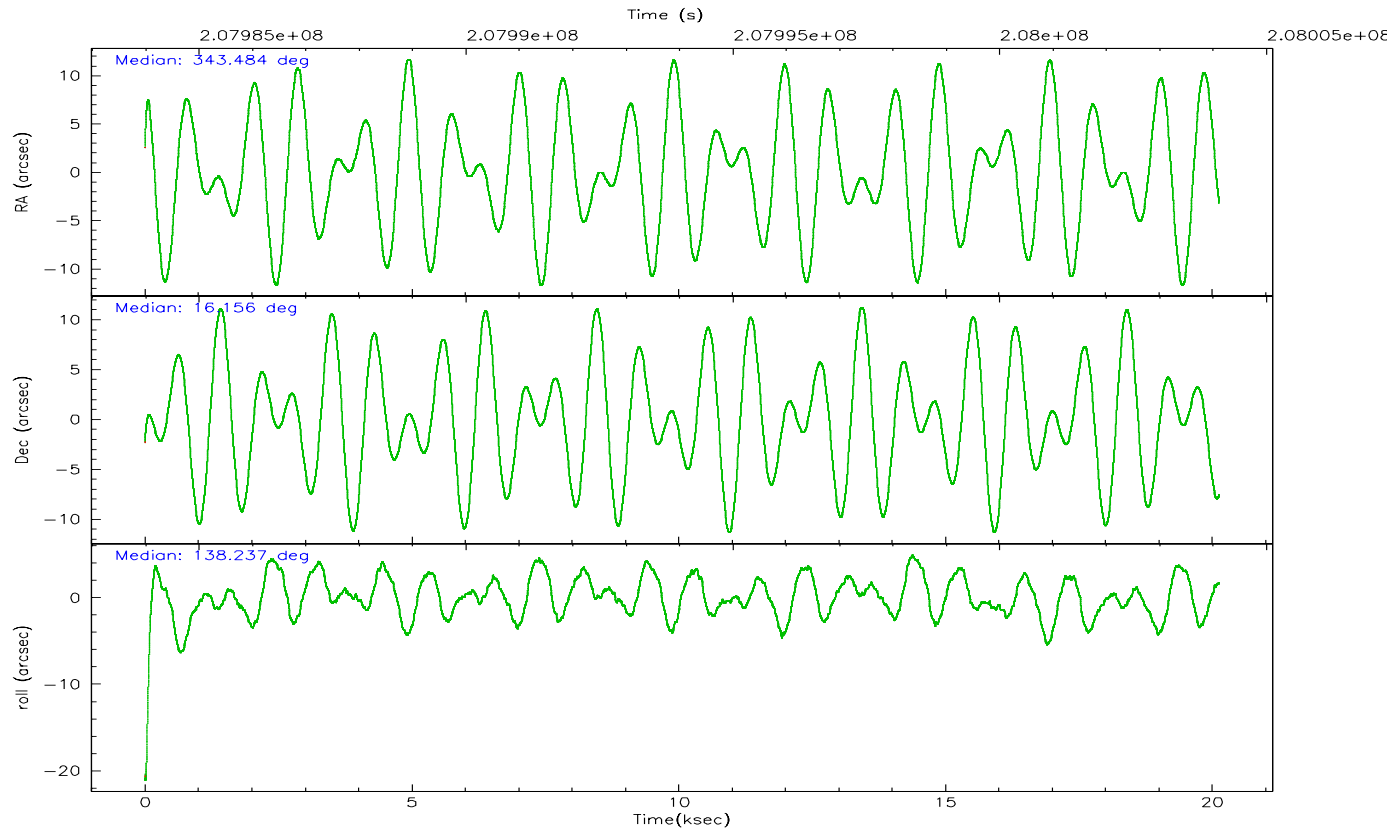
	ccd 7
grade 0 events	6820
	13%
grade 1 events	223
	0%
grade 2 events	8542
	16%
grade 3 events	3884
	7%
grade 4 events	3625
	6%
grade 5 events	3039
	5%
grade 6 events	11932
	22%
grade 7 events	13911
	26%

2.2 Compared Parameters

Parameter	Planned	Actual	Parameter	Planned	Actual
Instrument	ACIS	ACIS	Obspar format version number	6	6
Detector	ACIS-7	ACIS-7	Obspar file type	PREDICTED	ACTUAL
Grating	NONE	NONE	Obspar update status	NONE	UPDATED
Data mode	FAINT	FAINT	On-chip summing requested	N	N
Observation mode	POINTING	POINTING	Subarray requested	1/8	1/8
Pointing RA	343.512031	343.4842117516295	Subarray start row	0	449
Pointing Dec	16.150607	16.1557738568705	Subarray row count	1024	128
Pointing Roll	138.075568	138.2399270700884	Alternating exposures requested	N	N
Roll angle	140.000000	140.000000	Primary exposure time	0.000000	0.4
Roll tolerance	50.000000	50.000000			
Roll constraint allows 180D rotation	Y	Y			
SIM focus pos (mm)	-0.684267	-0.6828225247311905			
SIM defocus (mm)	0	0.001444936568705701			
SIM translation stage pos (mm)	-190.132523	-190.1400660498719			
SIM translation stage offset (mm)	0	0.00754346686406393			
Observation start time	207984117.184000	207982910.69519			
Observation start date	2004-08-04T05:20:53	2004-08-04T05:01:50			
Observation end time	208004117.184000	208004983.04617			
Observation end date	2004-08-04T10:54:13	2004-08-04T11:09:43			
Read mode	TIMED	TIMED			

2.3 Aspect



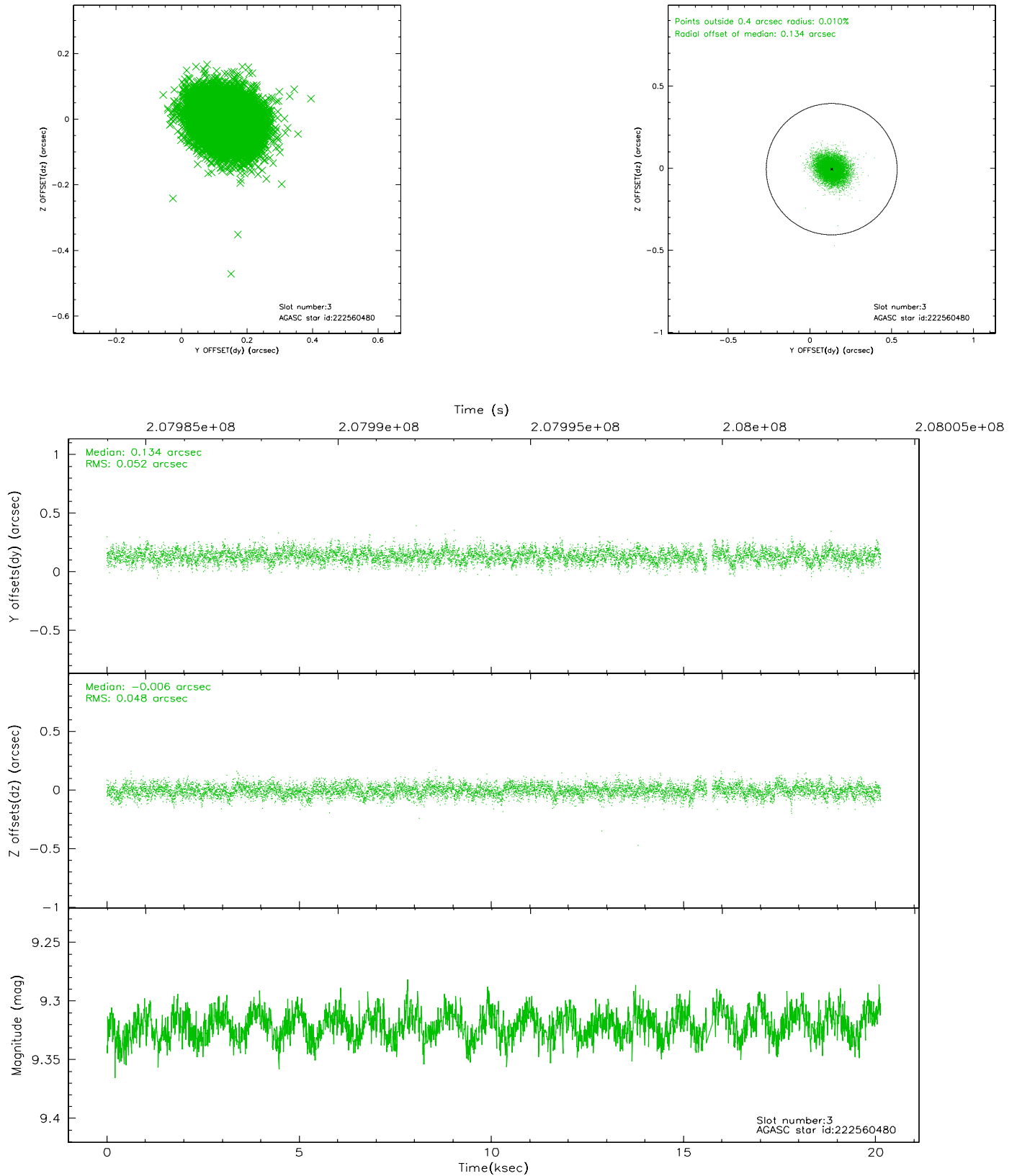


Slot Statistics

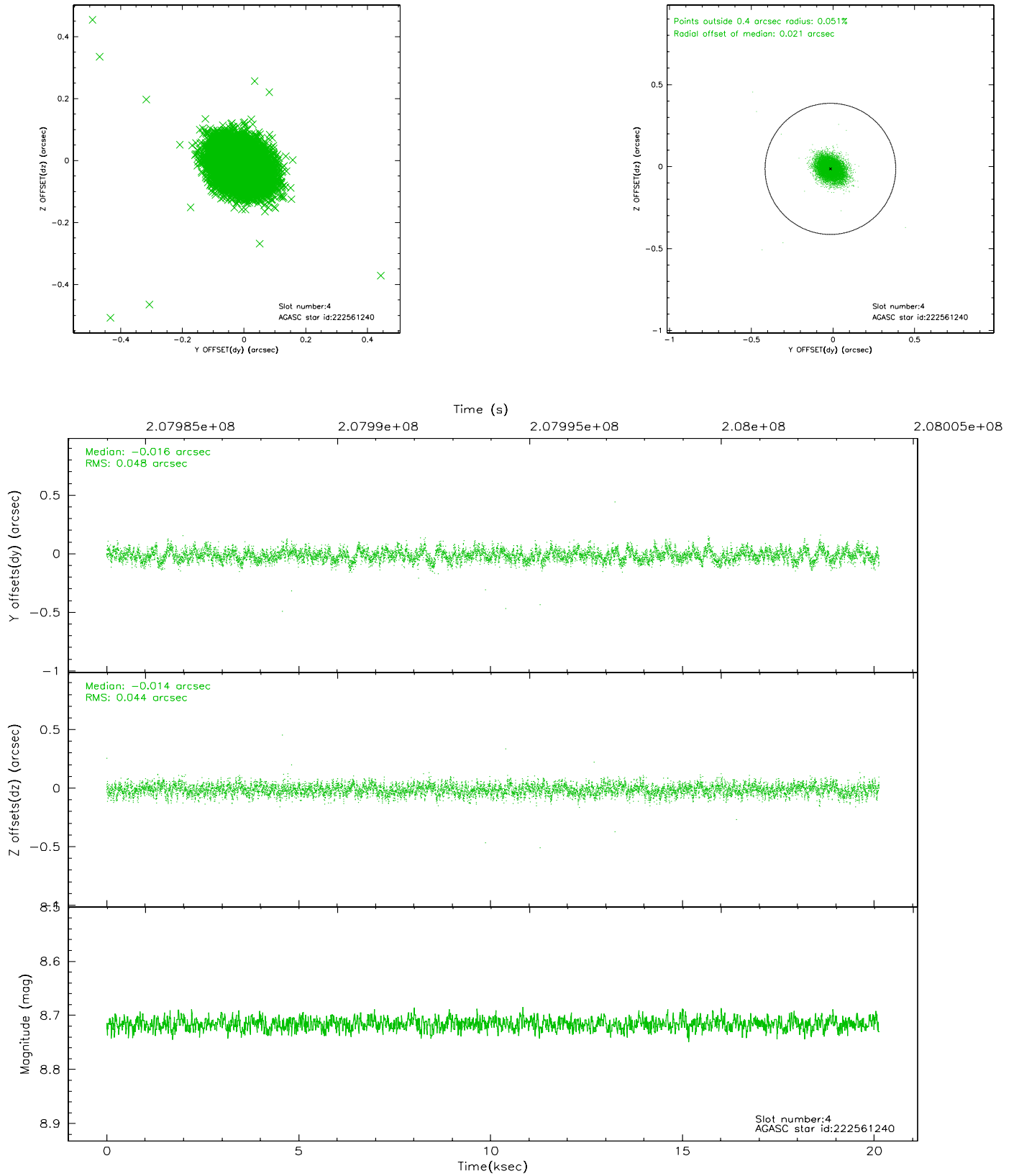
slot	status	id	mag	n_pts	med_dy	med_dz	dr1	dr2	ra	dec	mean_y	mean_z
0	FID	ACIS-S-1	7.19	4912	-0.002	0.016	0.019	0.034	0.000000	0.000000	937.96	-1726.33
1	FID	ACIS-S-5	7.24	4911	-0.066	-0.004	0.017	0.025	0.000000	0.000000	-1810.97	171.07
2	FID	ACIS-S-6	7.35	4912	0.044	-0.006	0.020	0.050	0.000000	0.000000	403.40	815.20
3	GUIDE	222560480	9.32	9745	0.134	-0.006	0.075	0.122	343.777779	15.665461	-1851.59	683.60
4	GUIDE	222561240	8.72	9823	-0.016	-0.014	0.067	0.109	343.355884	15.743652	-576.37	1451.31
5	GUIDE	222562432	8.96	9757	0.106	0.073	0.110	0.199	343.698150	16.309399	-96.21	-855.01
6	GUIDE	222563736	8.81	9819	-0.123	-0.146	0.080	0.128	343.076284	16.308502	1500.88	581.29
7	GUIDE	222565592	8.26	9820	-0.110	0.102	0.064	0.101	343.291662	16.508291	1426.96	-449.48

2.4 Star Slots

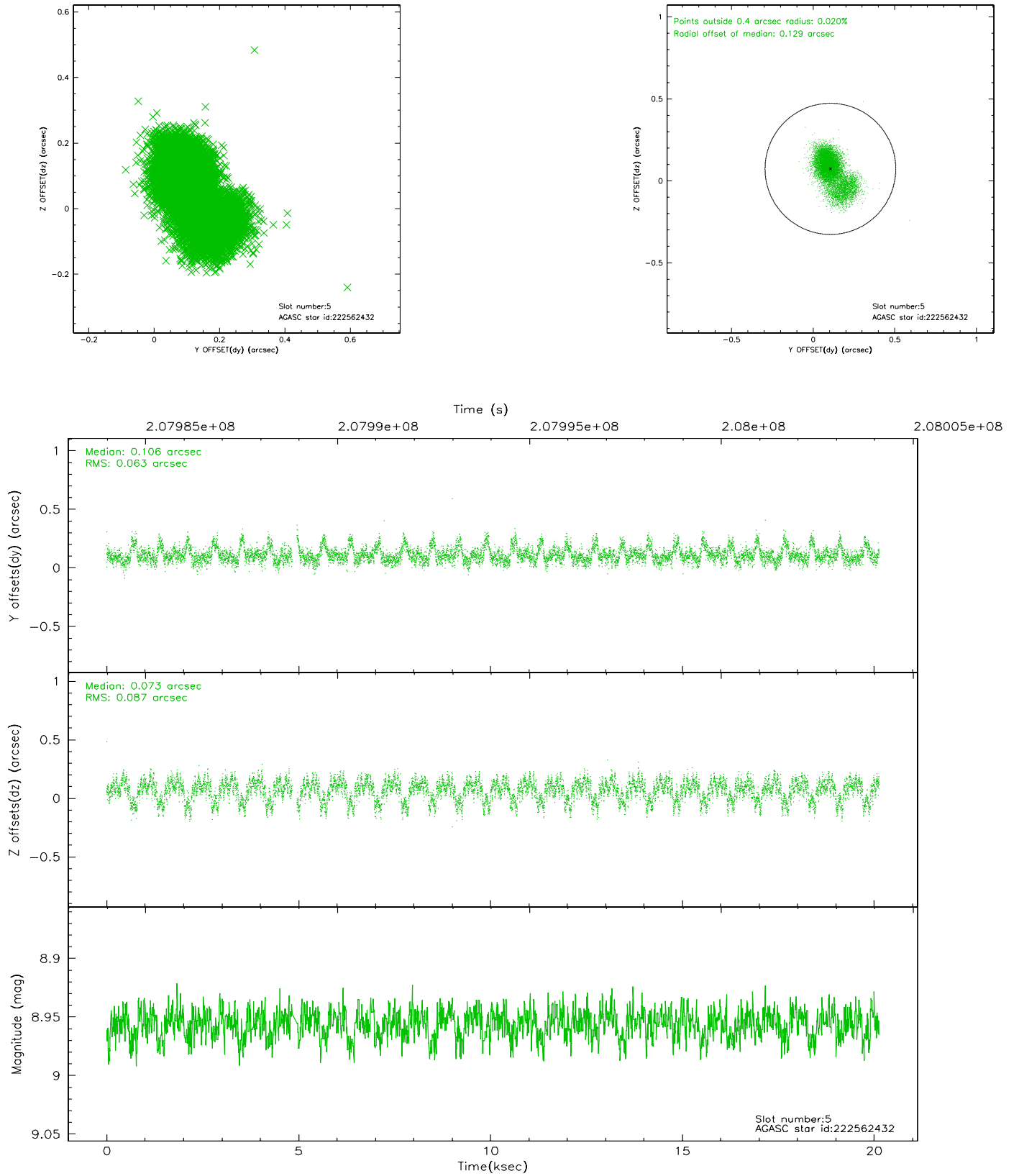
2.4.1 Slot 3



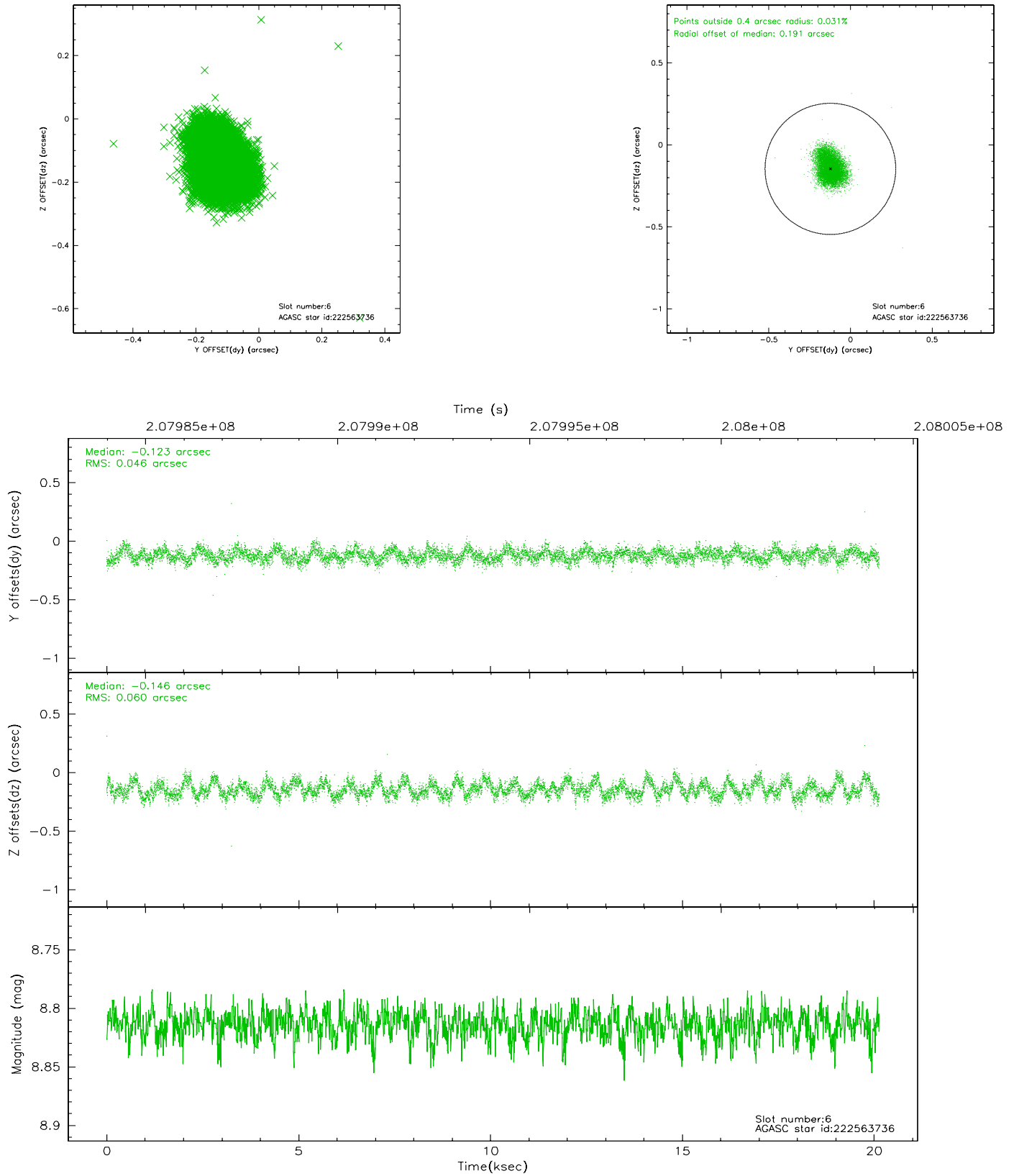
2.4.2 Slot 4



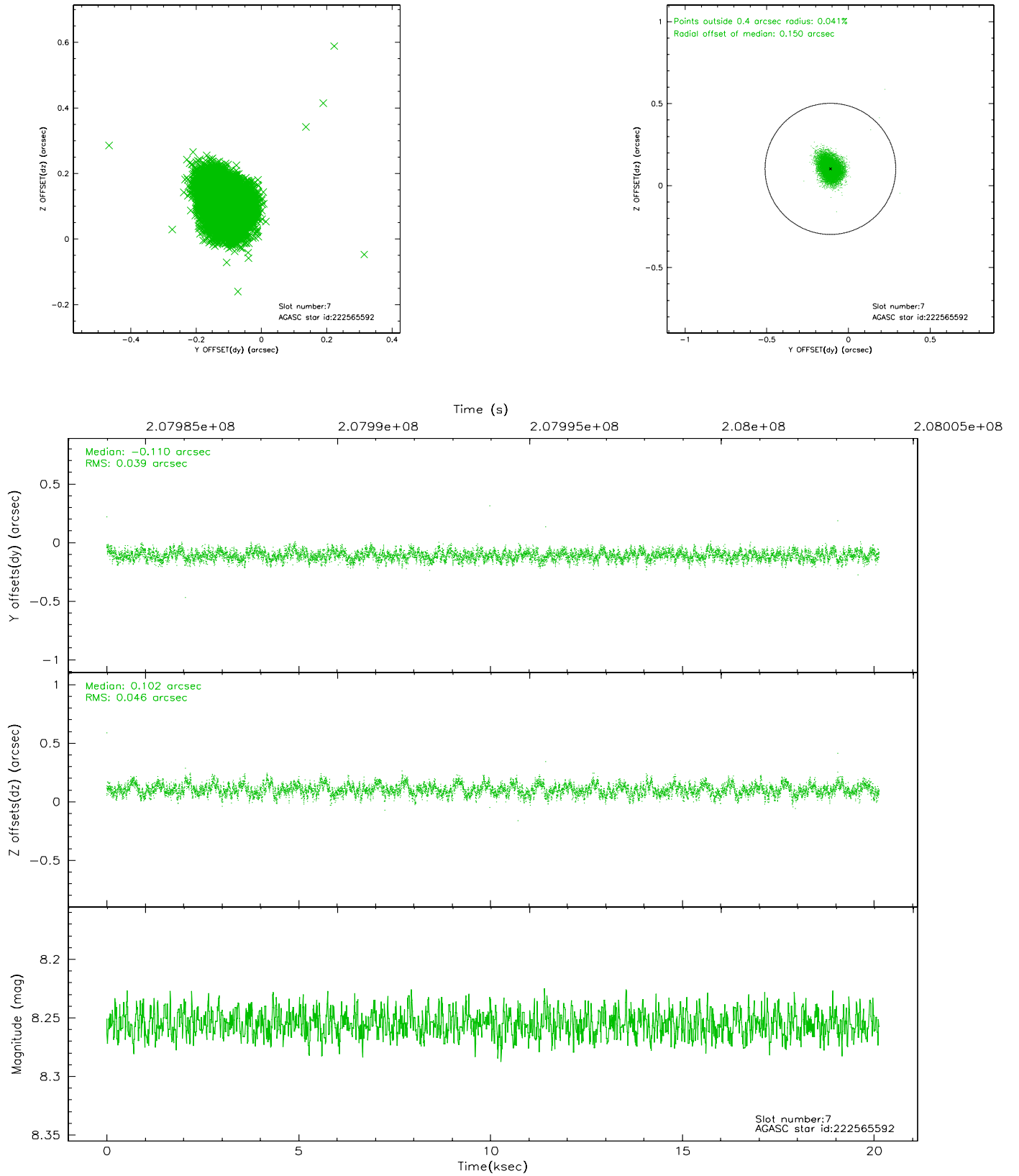
2.4.3 Slot 5



2.4.4 Slot 6

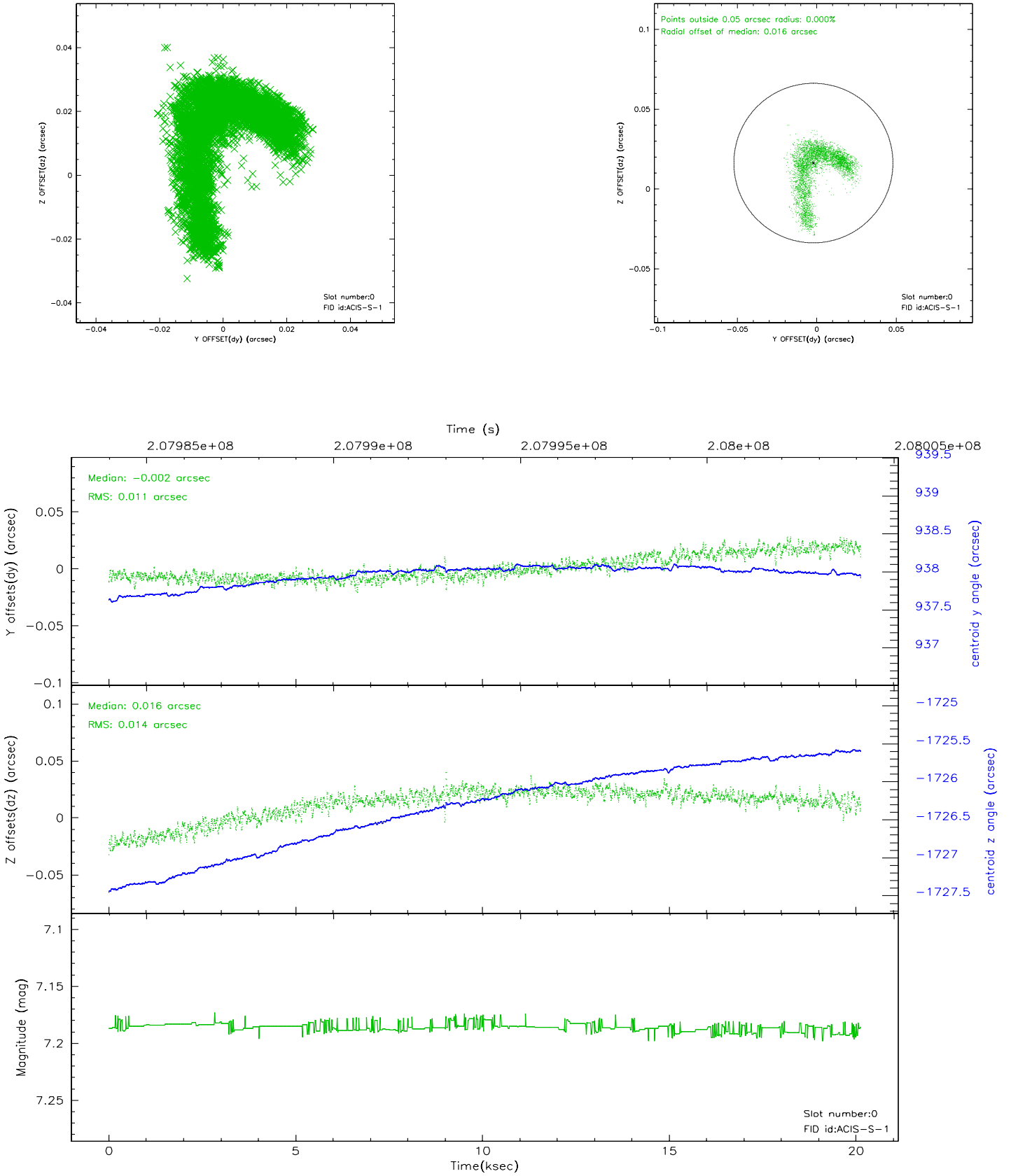


2.4.5 Slot 7

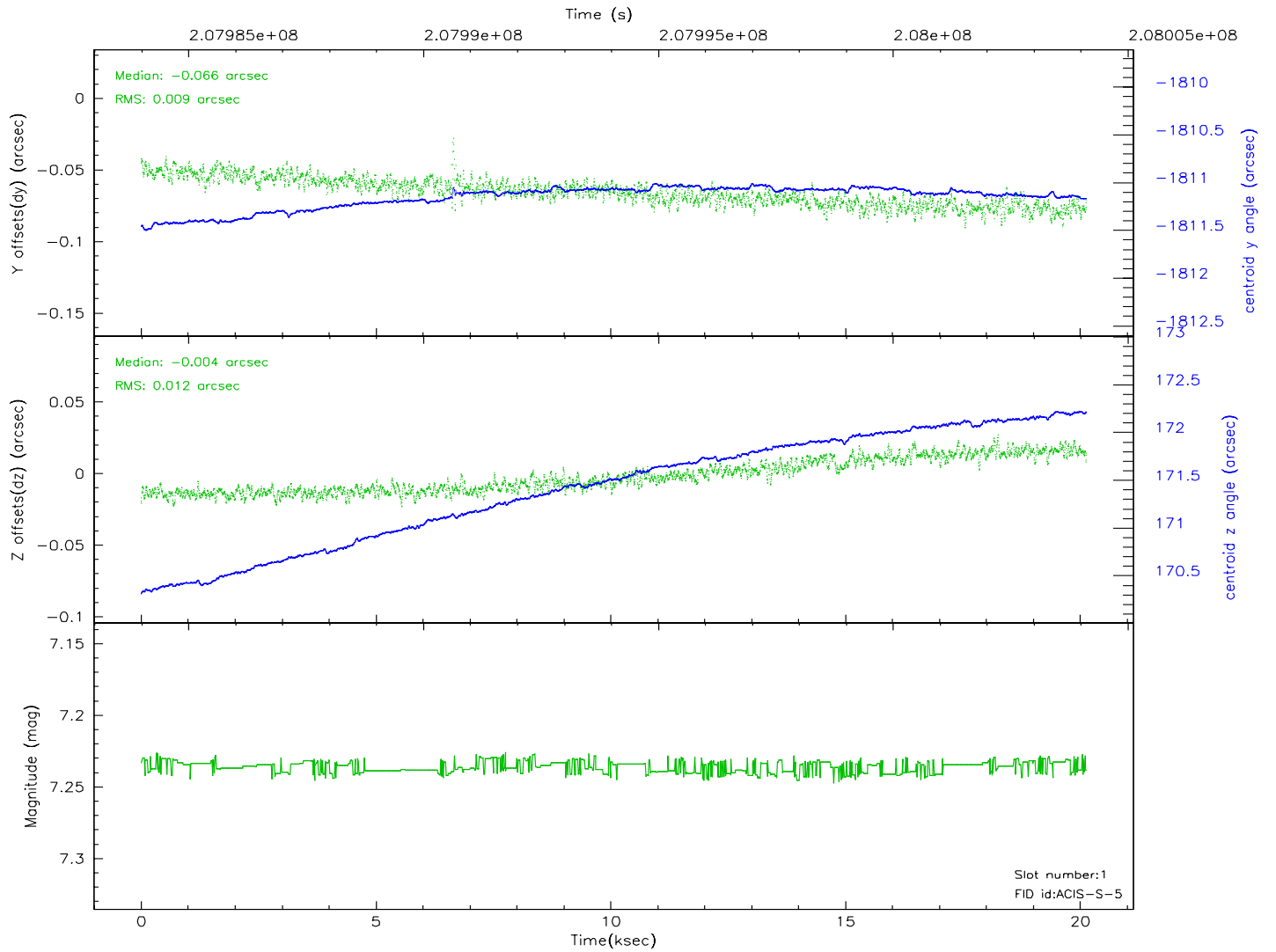
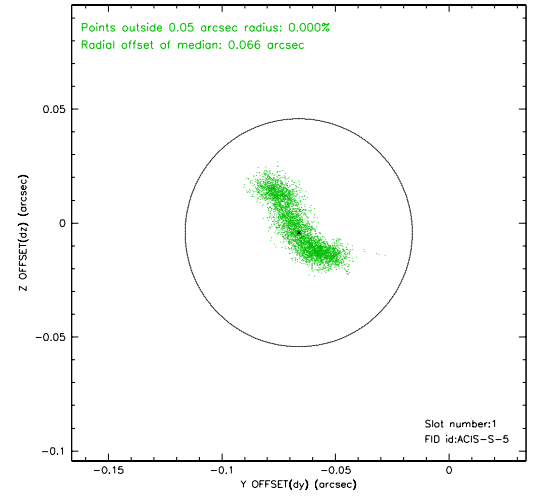
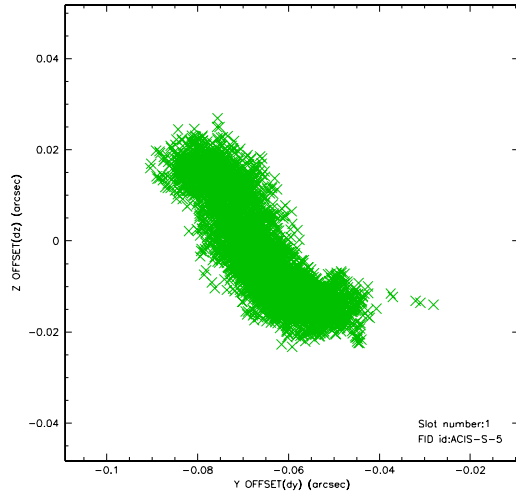


2.5 FID Slots

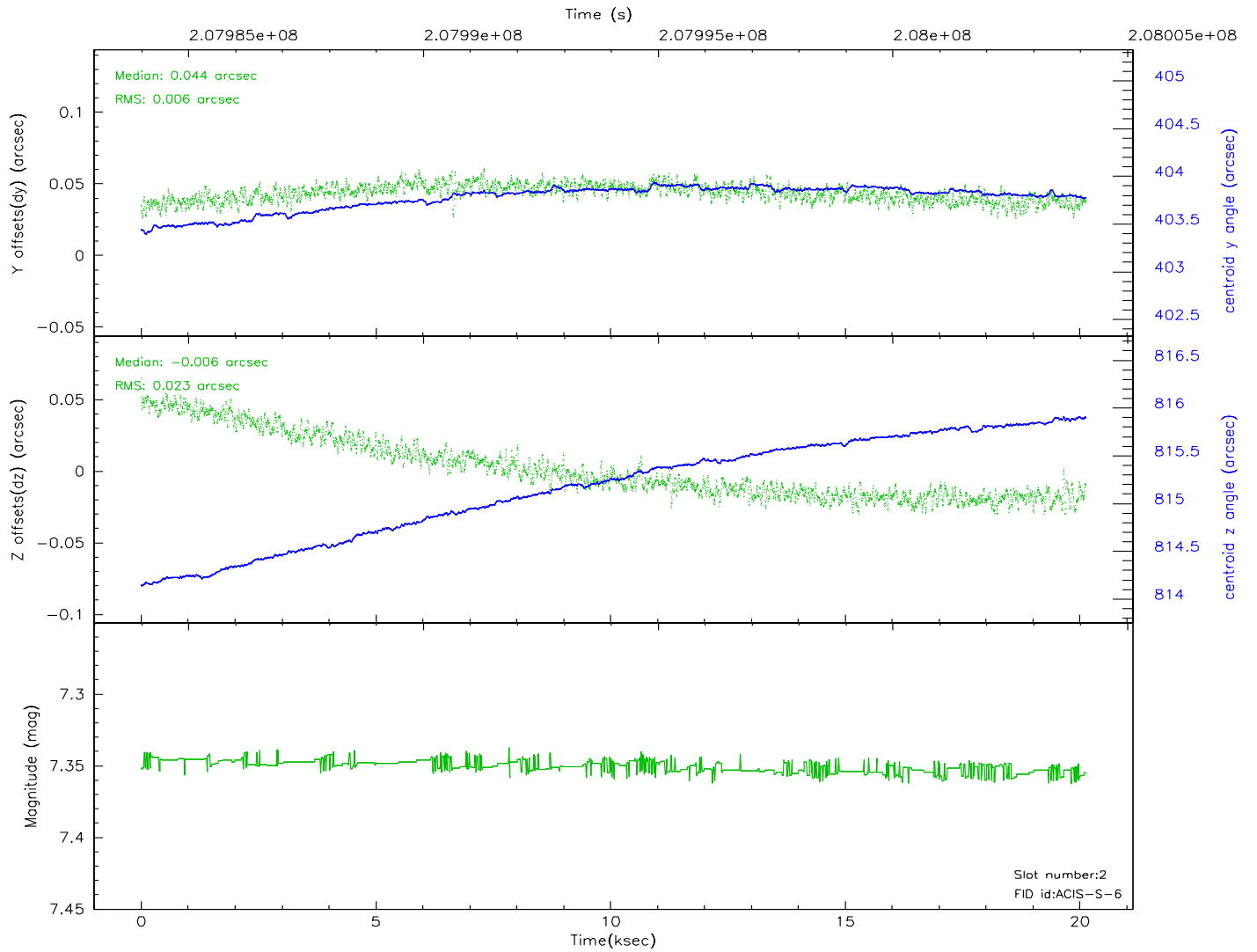
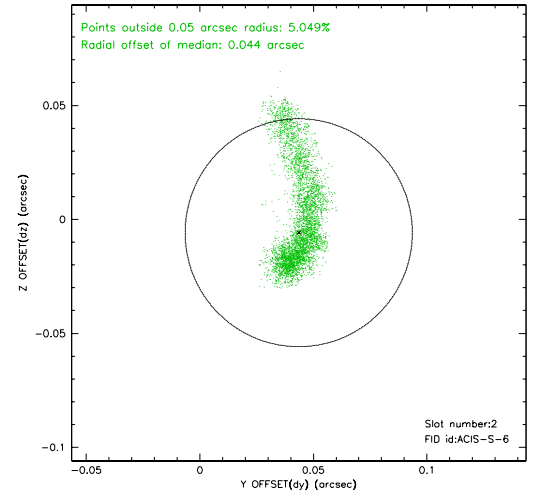
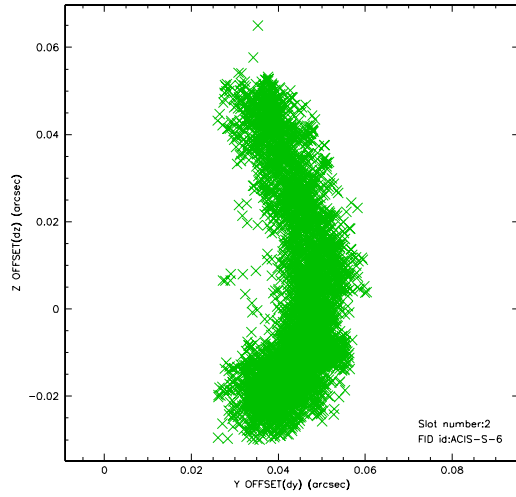
2.5.1 Slot 0



2.5.2 Slot 1



2.5.3 Slot 2



3 Point Sources

A Summary

A.1 Status

V&V Scientist	Jen Lauer
V&V Date (YYYY-MM-DD)	2006.04.27
V&V Edition	1
V&V Disposition and Status	OK
V&V Charge Time	20.1340003

A.2 Comments

Charge time:

New charge time differs by more than 5% of previous charge time and the difference is not due to more Obis.

NEW CHARGE TIME = 20.134000 ks, 1 Obis

PREVIOUS CHARGE TIME = 18.029000 ks, 1 Obis.

Roll constraint met.