

V&V Reference Report

L2 ASCDS Version : 7.6.7.2

Observation 4837 - L2 Version 001
Chandra X-Ray Center

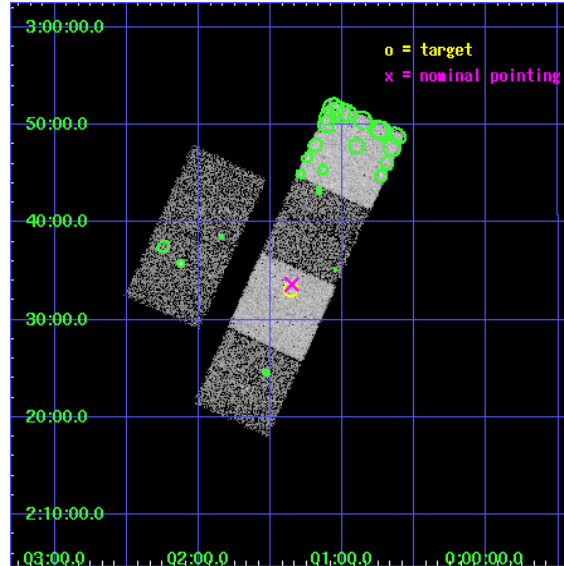
L2 Processing Date : Apr 27 2006

Contents

1	Front	2
2	OBI	3
2.1	OBI	3
2.1.1	Images	3
2.1.2	Bias	3
2.1.3	Parameters	4
2.1.4	Events	4
2.2	Compared Parameters	5
2.3	Aspect	6
2.4	Star Slots	9
2.4.1	Slot 3	9
2.4.2	Slot 4	10
2.4.3	Slot 5	11
2.4.4	Slot 6	12
2.4.5	Slot 7	13
2.5	FID Slots	14
2.5.1	Slot 0	14
2.5.2	Slot 1	15
2.5.3	Slot 2	16
3	Point Sources	17
A	Summary	18
A.1	Status	18
A.2	Comments	18

1 Front

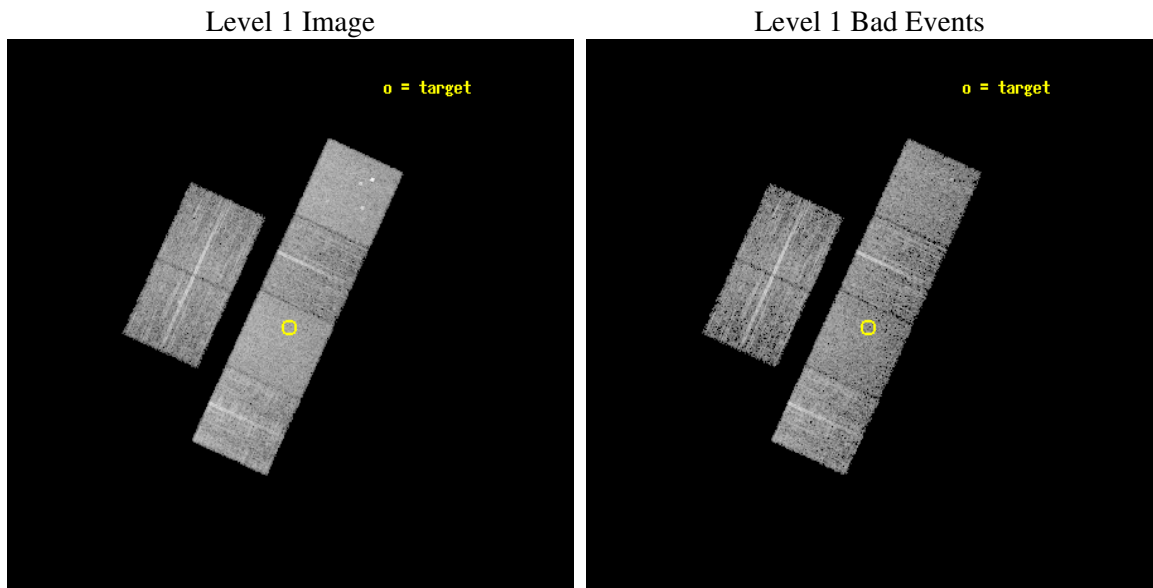
seq_num	700919
obs_id	4837
title	Constraining the Hard-X-ray Through Submm SEDs of a Complete Sample of Broad Absorption Line Quasars
observer	Dr. Sarah Gallagher
object	LBQS 2358+0216
dtcycle	0
cycle	P
ra_targ	0.340417
dec_targ	2.551139
ra_nom	0.3380308322593
dec_nom	2.5604102969489
roll_nom	114.63452779104
revision	2
ontime	5862.3999781609
livetime	5788.1667397239
ontime2	5862.3999781609
ontime3	5862.3999781609
ontime5	5862.3999781609
ontime6	5862.3999781609
ontime7	5862.3999781609
ontime8	5862.3999781609
l2events	65528



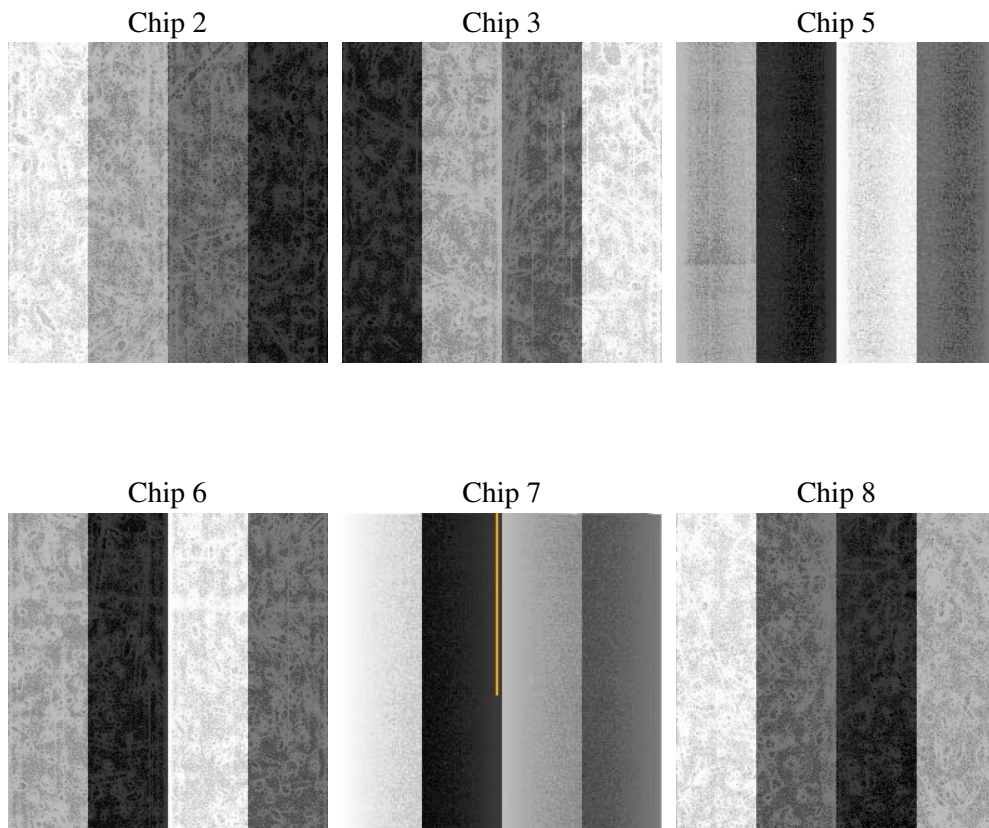
2 OBI

2.1 OBI

2.1.1 Images



2.1.2 Bias



2.1.3 Parameters

obi_num	1
ascdsver	7.6.7.2
caldbver	3.2.1
date	2006-04-28T02:23:48
revision	2

sched_exp_time	5908.000000
ontime	5869.4632708132
ontime2	5869.4632509351
ontime3	5869.4632708132
ontime5	5869.4632708132
ontime6	5869.4632509351
ontime7	5869.4632708132
ontime8	5869.4632509351
l1events	304457

2.1.4 Events

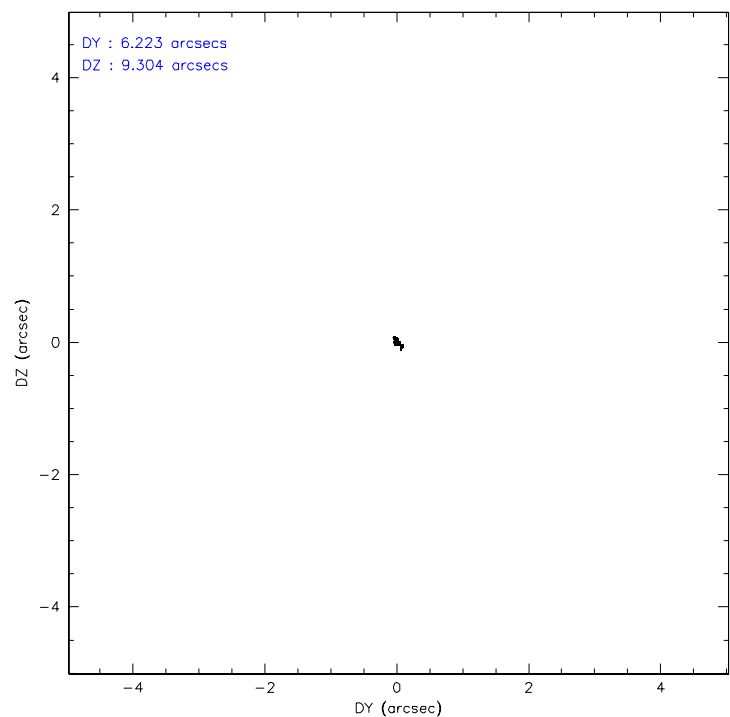
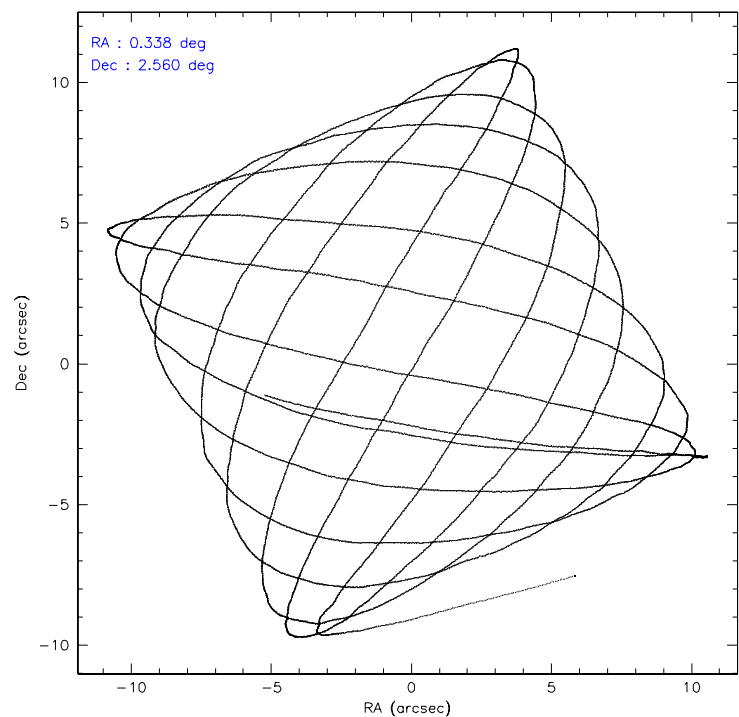
	ccd 2	ccd 3	ccd 5	ccd 6	ccd 7	ccd 8
level 1 events	43995	40913	62795	42844	57347	56563
rejected events	38931	35947	35264	37565	35365	45201
rejected %	88%	87%	56%	87%	61%	79%

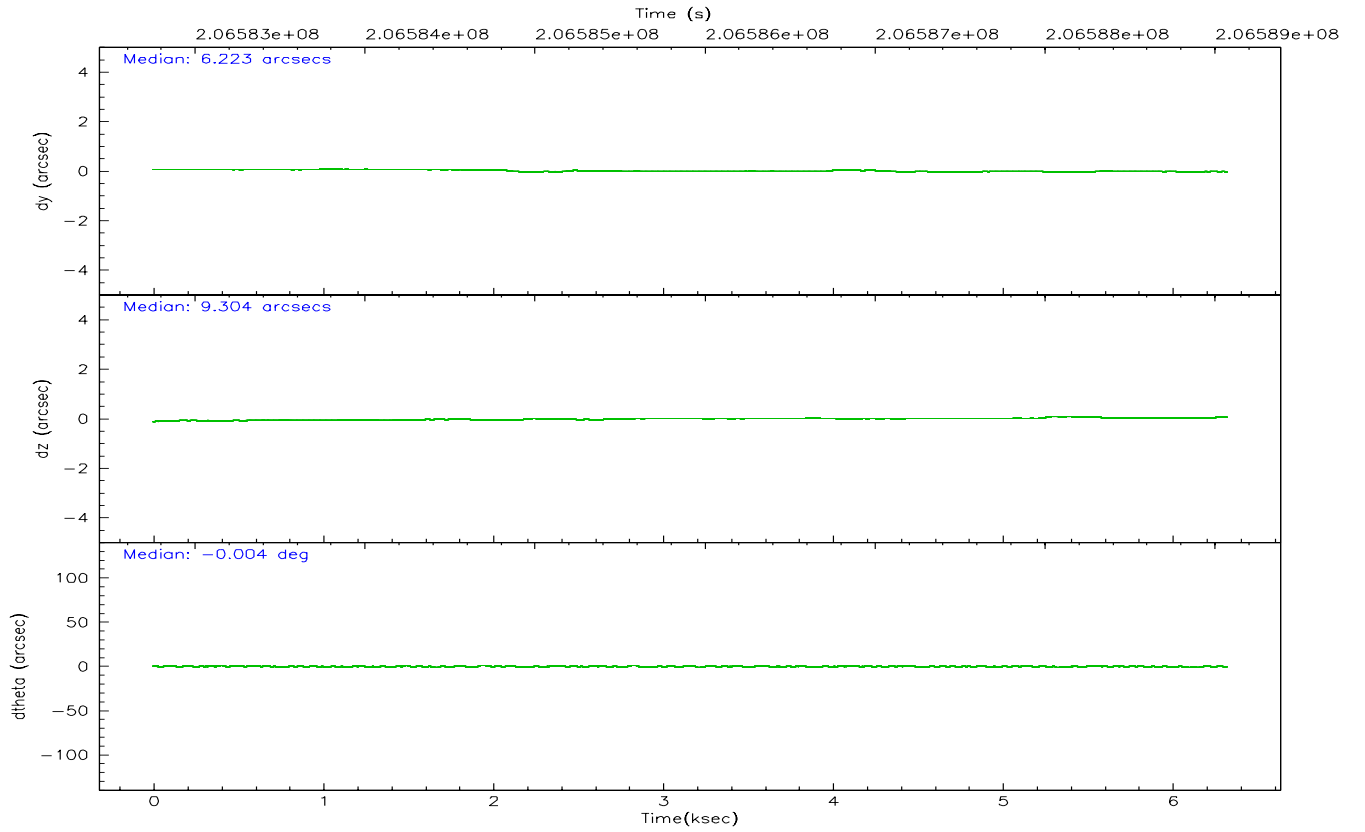
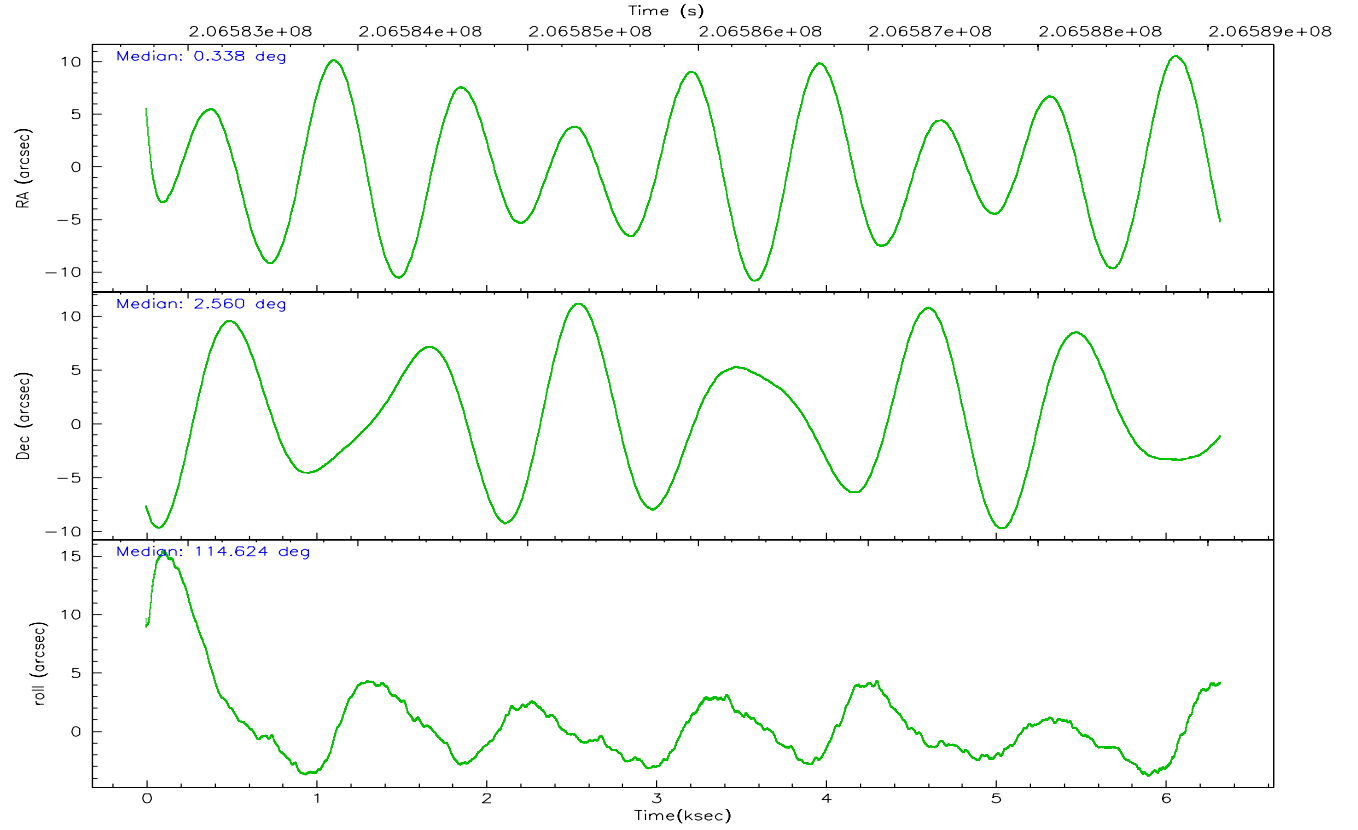
	ccd 2	ccd 3	ccd 5	ccd 6	ccd 7	ccd 8
grade 0 events	2284	2165	2225	2163	1287	3539
	5%	5%	3%	5%	2%	6%
grade 1 events	18	32	109	21	30	43
	0%	0%	0%	0%	0%	0%
grade 2 events	1014	944	8390	1096	5364	2606
	2%	2%	13%	2%	9%	4%
grade 3 events	475	465	564	488	1076	1114
	1%	1%	0%	1%	1%	1%
grade 4 events	463	502	537	472	1014	1047
	1%	1%	0%	1%	1%	1%
grade 5 events	1668	1961	2857	1942	3682	2662
	3%	4%	4%	4%	6%	4%
grade 6 events	836	896	15849	1067	13268	3100
	1%	2%	25%	2%	23%	5%
grade 7 events	37237	33948	32264	35595	31626	42452
	84%	82%	51%	83%	55%	75%

2.2 Compared Parameters

Parameter	Planned	Actual	Parameter	Planned	Actual
Instrument	ACIS	ACIS	Obspar format version number	6	6
Detector	ACIS-235678	ACIS-235678	Obspar file type	PREDICTED	ACTUAL
Grating	NONE	NONE	Obspar update status	NONE	UPDATED
Data mode	FAINT	FAINT	On-chip summing requested	N	N
Observation mode	POINTING	POINTING	Subarray requested	NONE	NONE
Pointing RA	0.360431	0.3380308322592961	Alternating exposures requested	N	N
Pointing Dec	2.545038	2.560410296948885	Primary exposure time	0.000000	3.2
Pointing Roll	114.476919	114.6345277910369			
SIM focus pos (mm)	-0.684267	-0.6828225247311905			
SIM defocus (mm)	0	0.001444936568705701			
SIM translation stage pos (mm)	-190.132523	-190.1400660498719			
SIM translation stage offset (mm)	0	0.00754346686406393			
Observation start time	206583163.184000	206582086.69543			
Observation start date	2004-07-19T00:11:39	2004-07-18T23:54:46			
Observation end time	206589071.184000	206589873.10828			
Observation end date	2004-07-19T01:50:07	2004-07-19T02:04:33			
Read mode	TIMED	TIMED			

2.3 Aspect



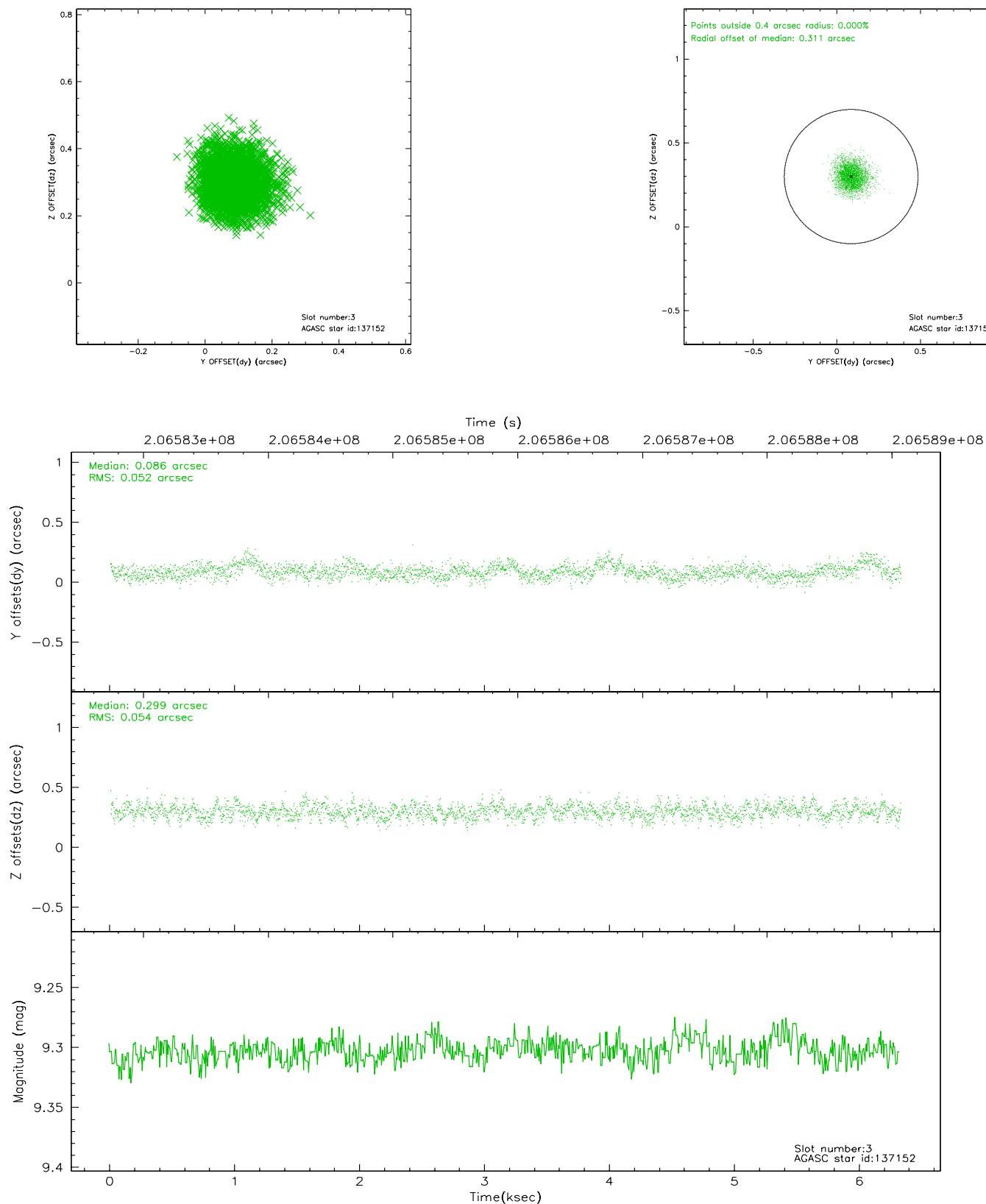


Slot Statistics

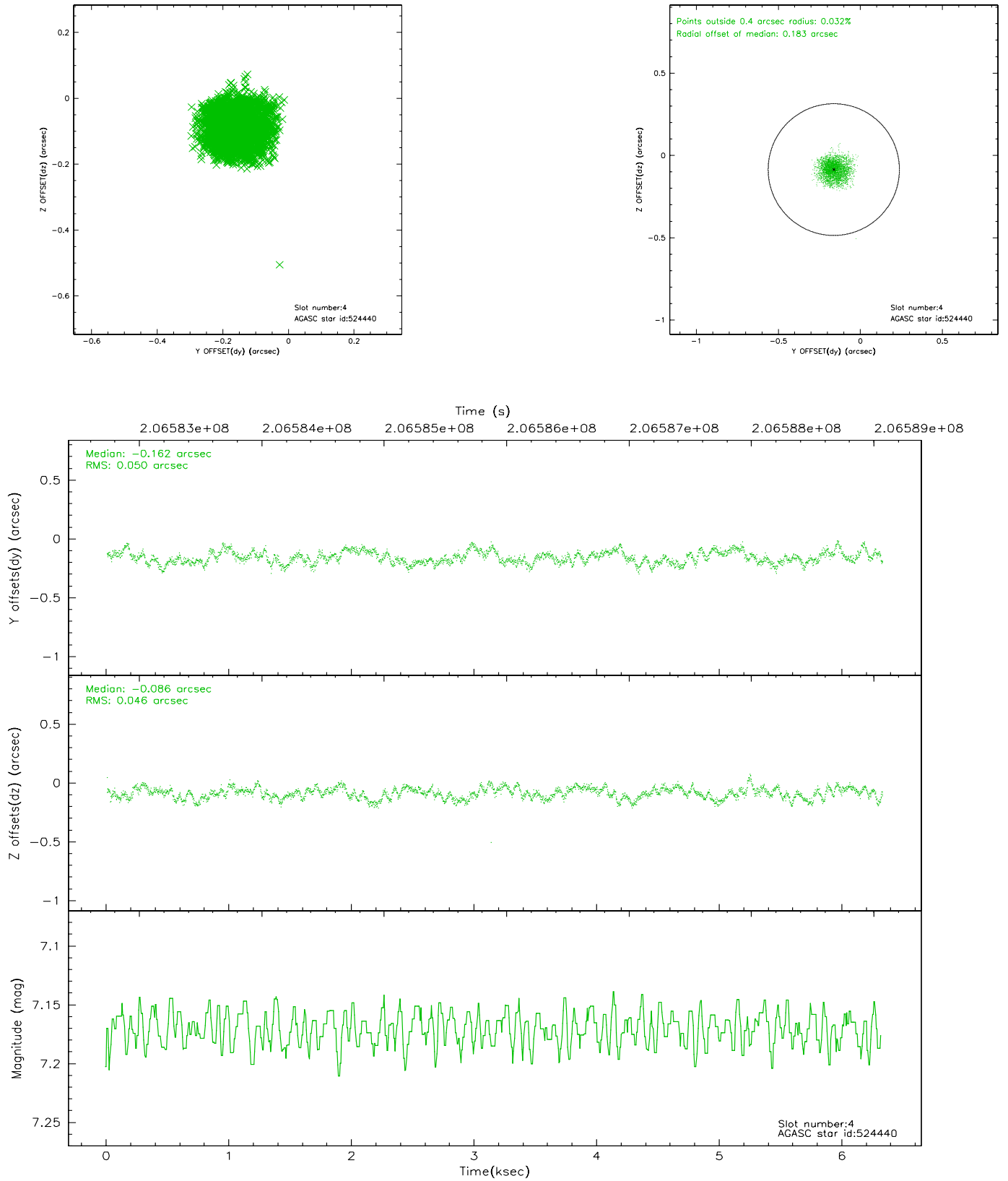
slot	status	id	mag	n_pts	med_dy	med_dz	dr1	dr2	ra	dec	mean_y	mean_z
0	FID	ACIS-S-2	7.09	1544	-0.050	-0.019	0.006	0.010	0.000000	0.000000	-759.00	-1730.55
1	FID	ACIS-S-4	7.20	1543	0.061	0.029	0.005	0.010	0.000000	0.000000	2153.95	177.04
2	FID	ACIS-S-5	7.23	1544	-0.042	-0.001	0.006	0.010	0.000000	0.000000	-1810.66	171.71
3	GUIDE	137152	9.30	3085	0.086	0.299	0.079	0.131	0.759422	2.357653	-1207.64	-1026.44
4	GUIDE	524440	7.17	3086	-0.162	-0.086	0.075	0.113	0.098087	2.675483	818.17	664.00
5	GUIDE	76944744	9.45	3085	0.121	-0.236	0.104	0.170	359.962342	1.870353	-1616.62	2309.63
6	GUIDE	76943944	9.50	3083	0.083	-0.259	0.110	0.178	359.805996	2.144458	-486.28	2413.43
7	GUIDE	526840	9.84	3083	-0.132	0.288	0.115	0.191	0.756293	3.261824	1759.78	-2362.61

2.4 Star Slots

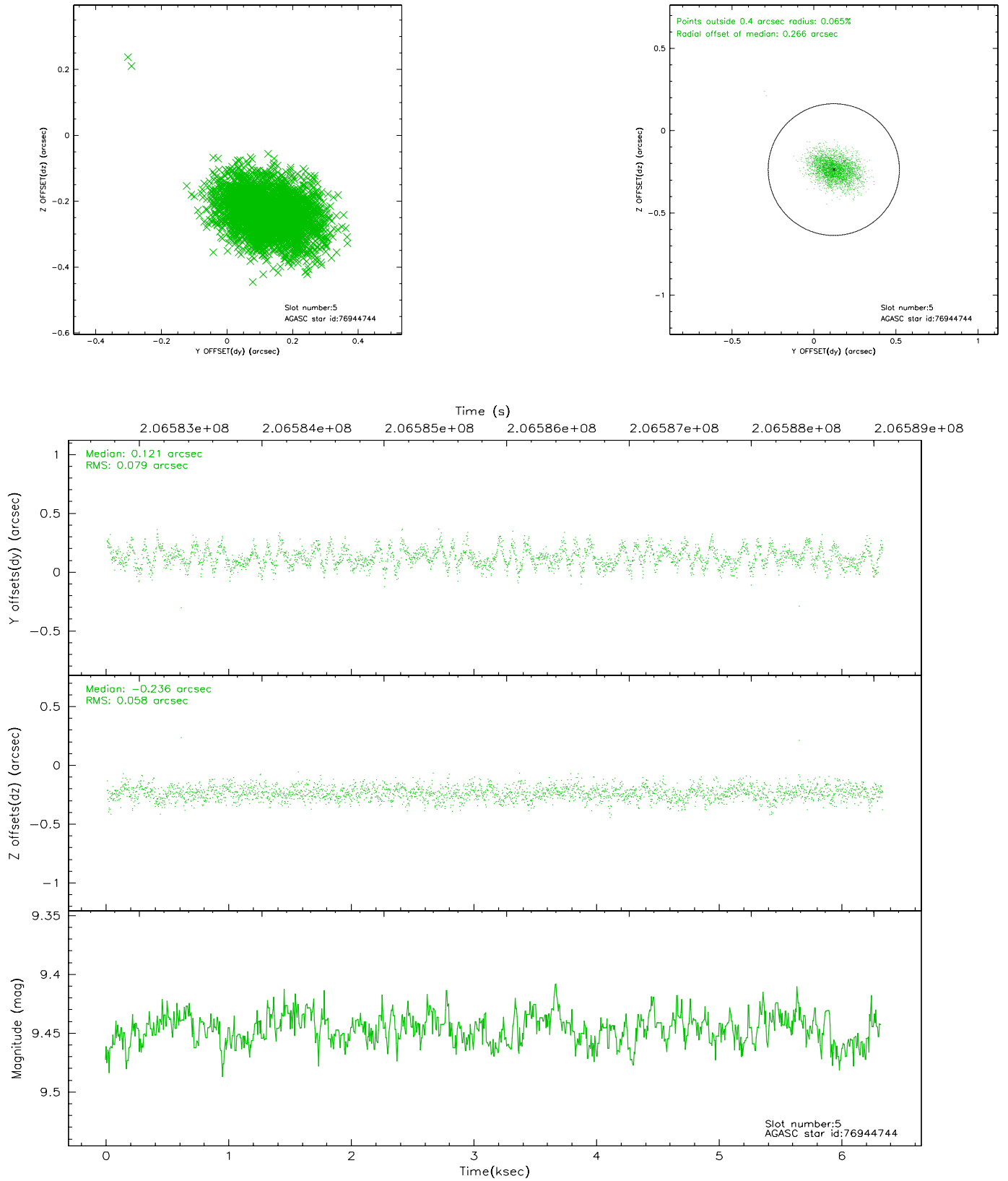
2.4.1 Slot 3



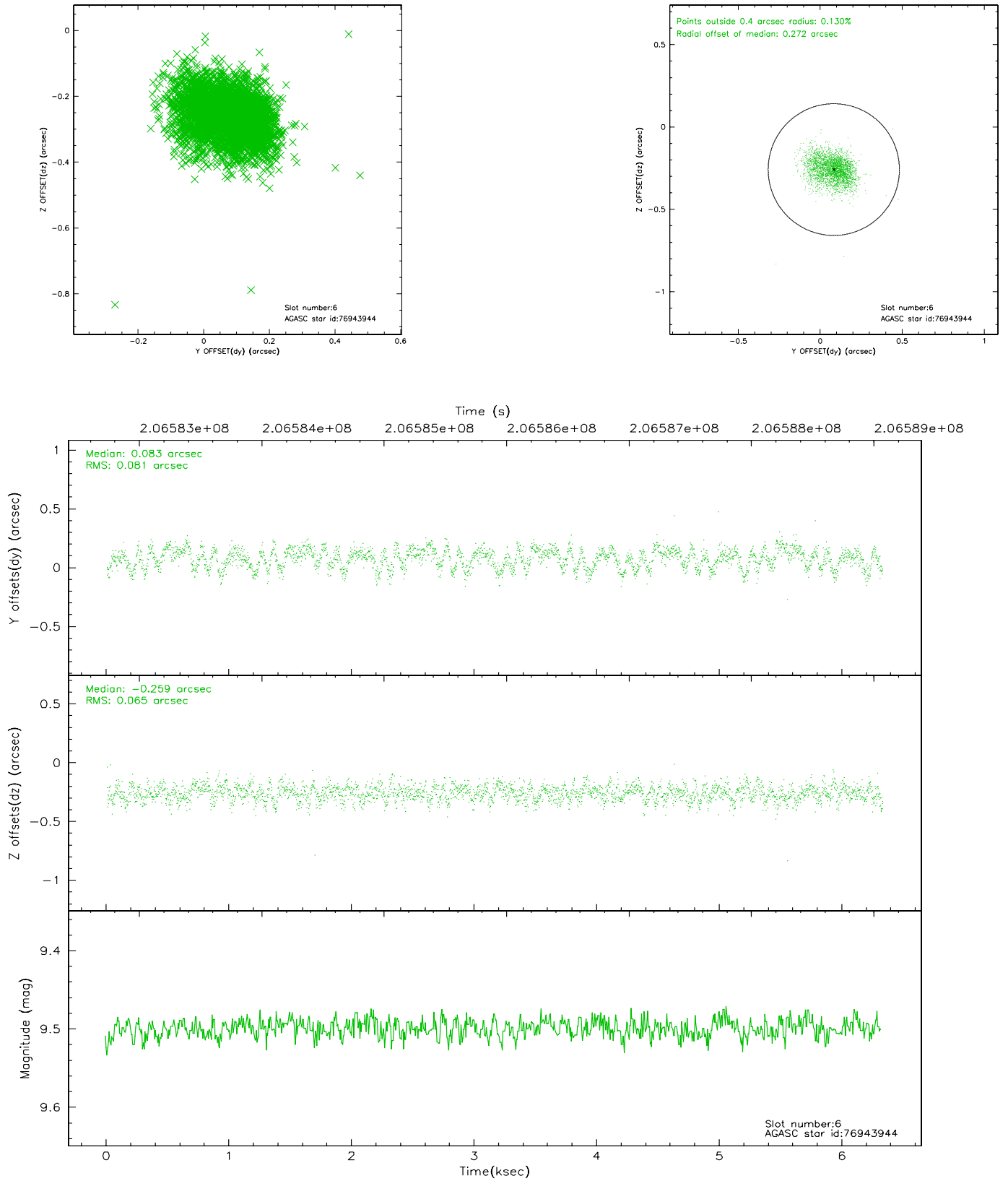
2.4.2 Slot 4



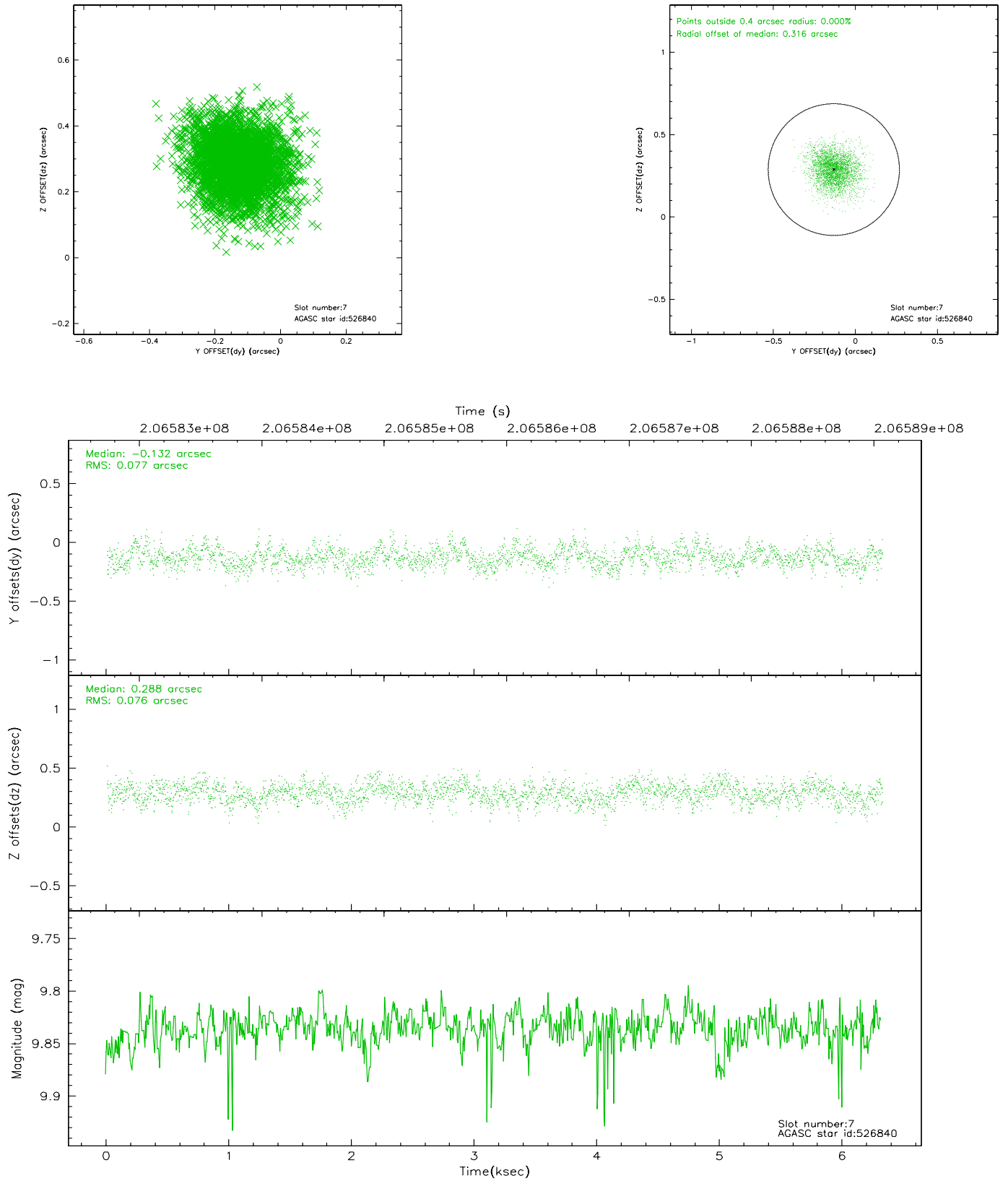
2.4.3 Slot 5



2.4.4 Slot 6

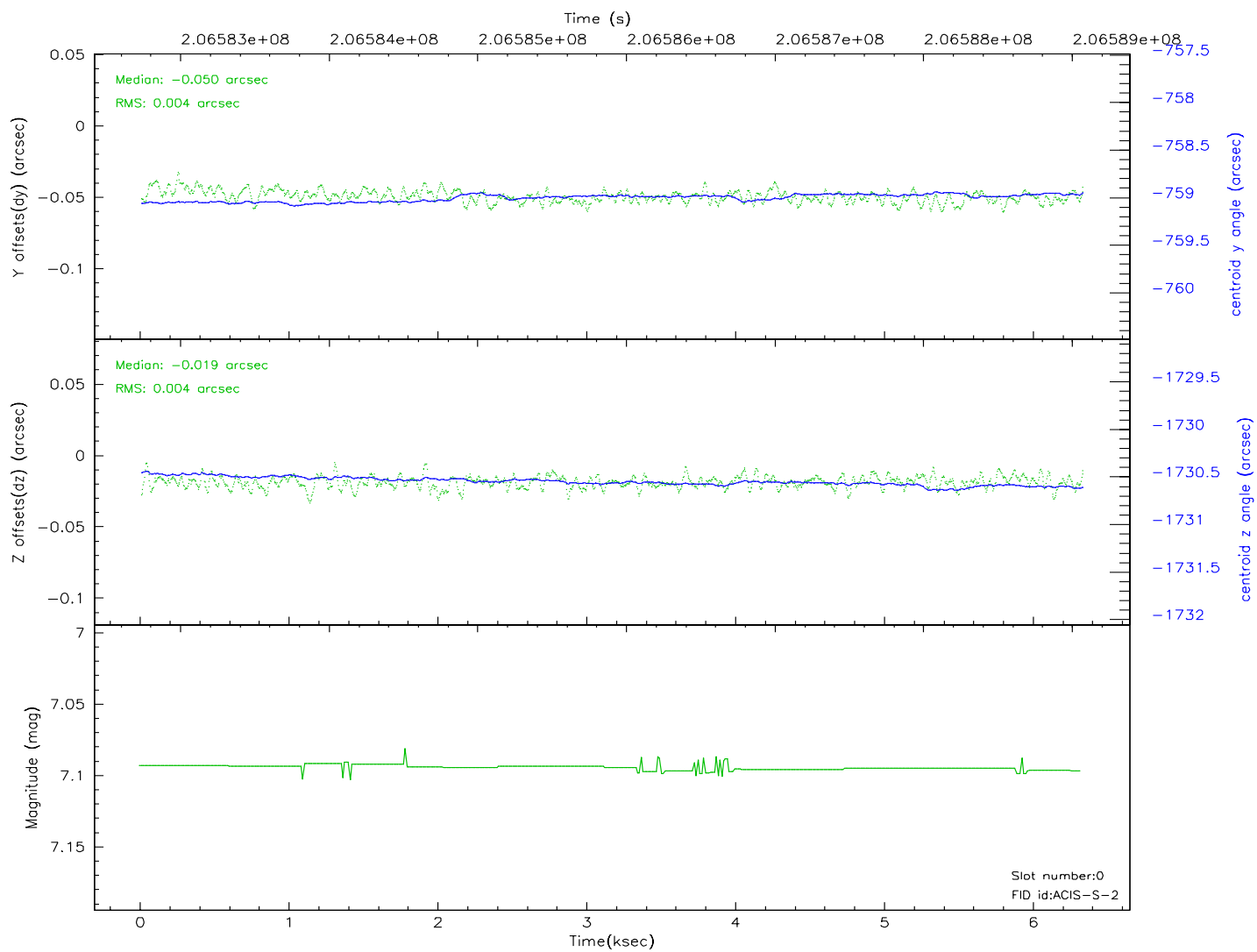
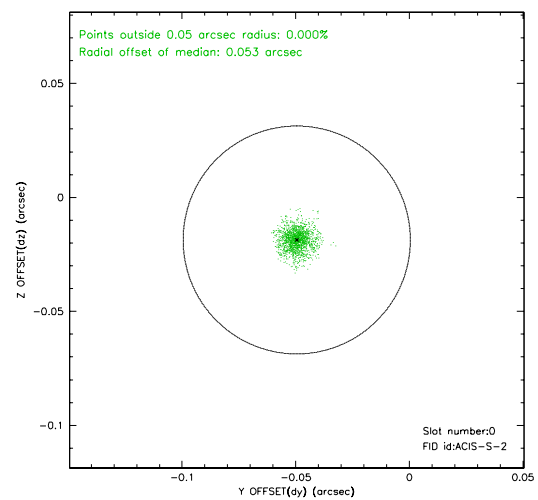
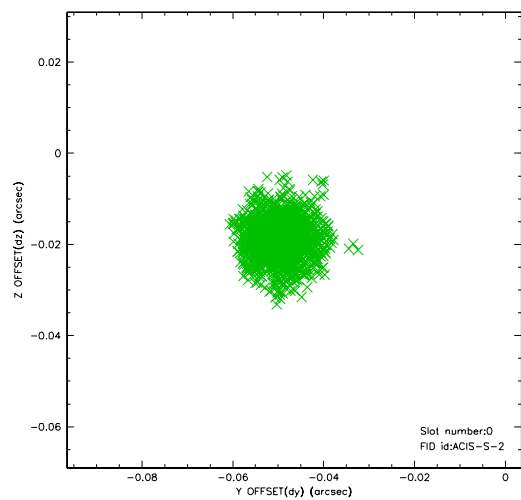


2.4.5 Slot 7

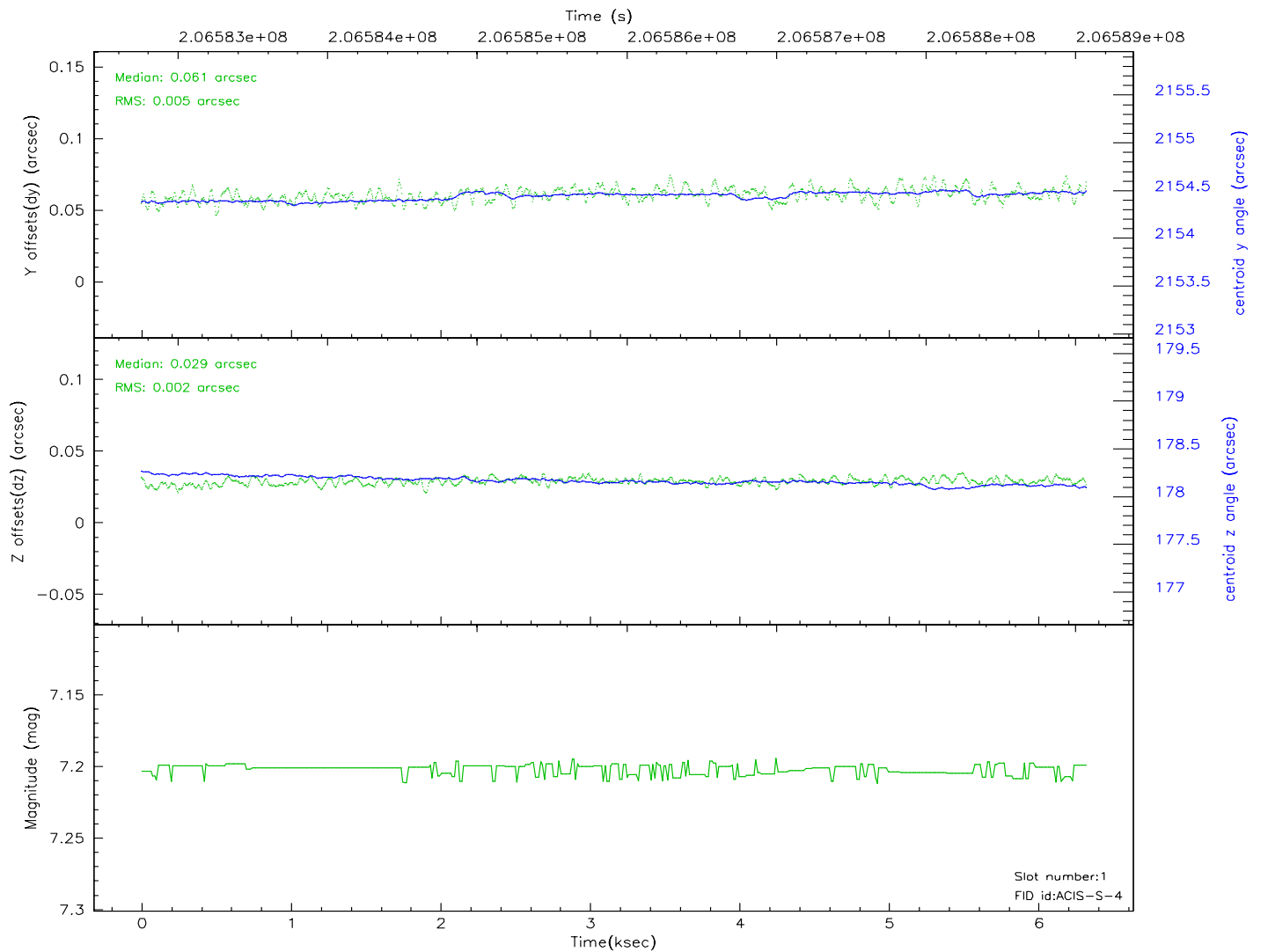
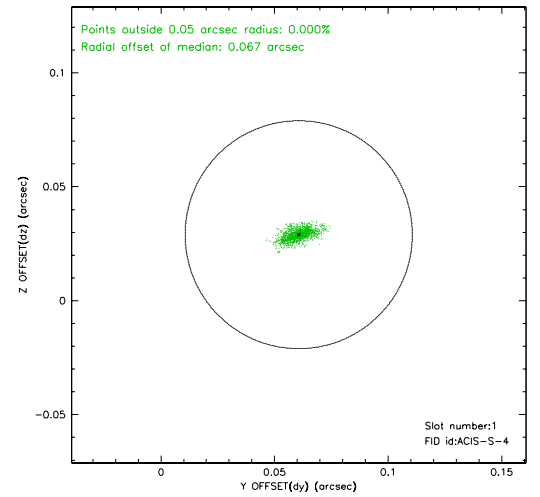
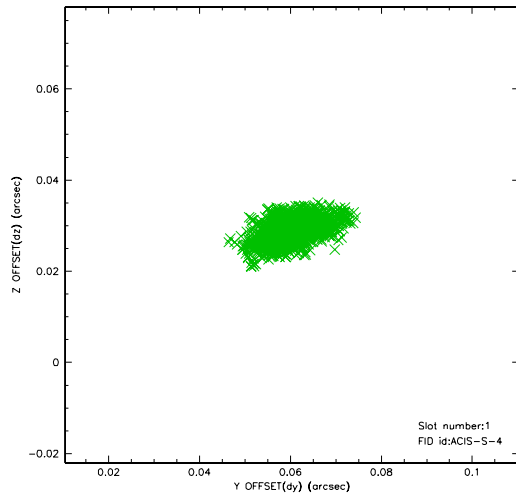


2.5 FID Slots

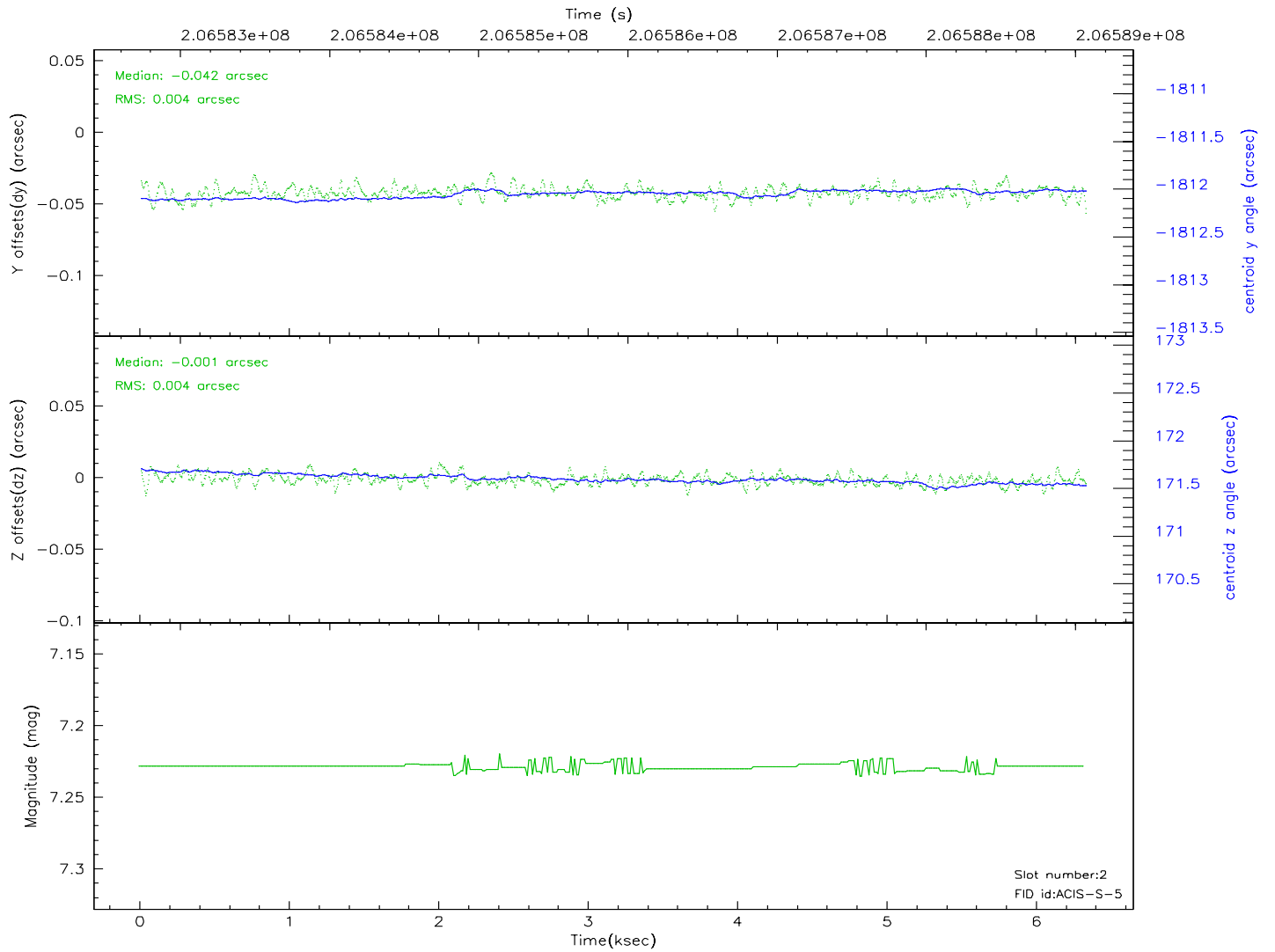
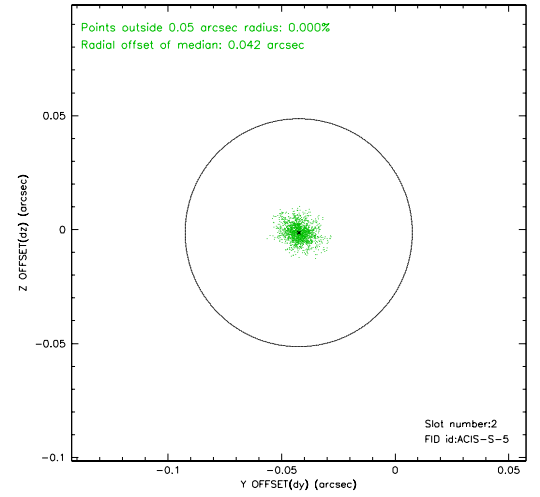
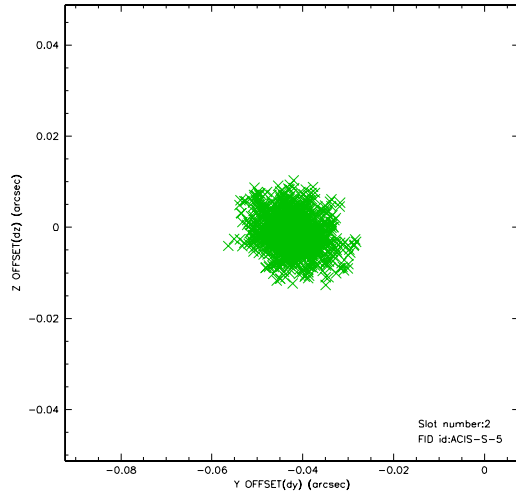
2.5.1 Slot 0



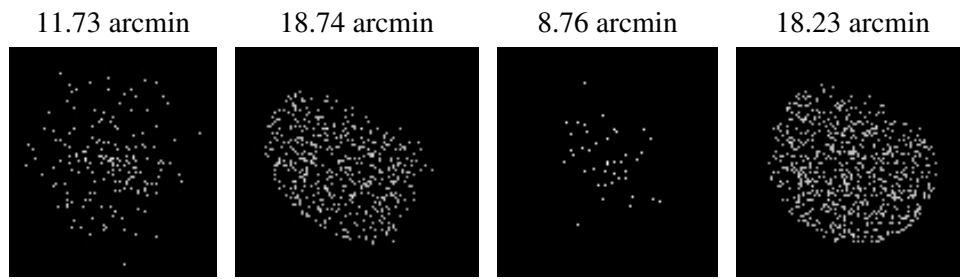
2.5.2 Slot 1



2.5.3 Slot 2



3 Point Sources



A Summary

A.1 Status

V&V Scientist	Jen Lauer
V&V Date (YYYY-MM-DD)	2006.04.28
V&V Edition	1
V&V Disposition and Status	OK
V&V Charge Time	5.862

A.2 Comments