

V&V Reference Report

L2 ASCDS Version : 7.6.7.2

Observation 4829 - L2 Version 001
Chandra X-Ray Center

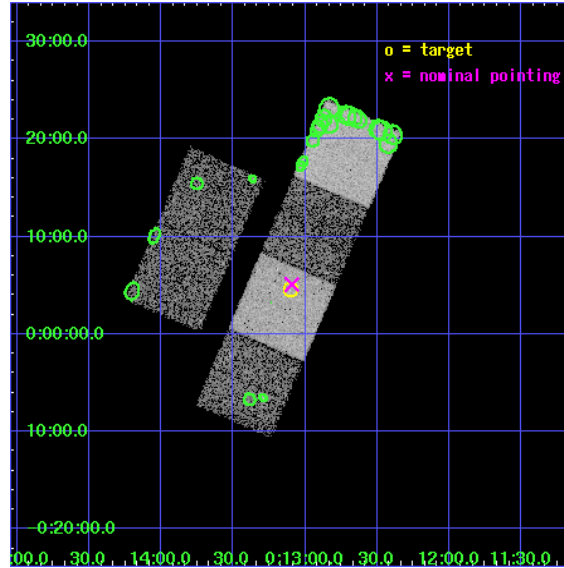
L2 Processing Date : May 23 2006

Contents

1	Front	2
2	OBI	3
2.1	OBI	3
2.1.1	Images	3
2.1.2	Bias	3
2.1.3	Parameters	4
2.1.4	Events	4
2.2	Compared Parameters	5
2.3	Aspect	6
2.4	Star Slots	9
2.4.1	Slot 3	9
2.4.2	Slot 4	10
2.4.3	Slot 5	11
2.4.4	Slot 6	12
2.4.5	Slot 7	13
2.5	FID Slots	14
2.5.1	Slot 0	14
2.5.2	Slot 1	15
2.5.3	Slot 2	16
3	Point Sources	17
A	Summary	18
A.1	Status	18
A.2	Comments	18

1 Front

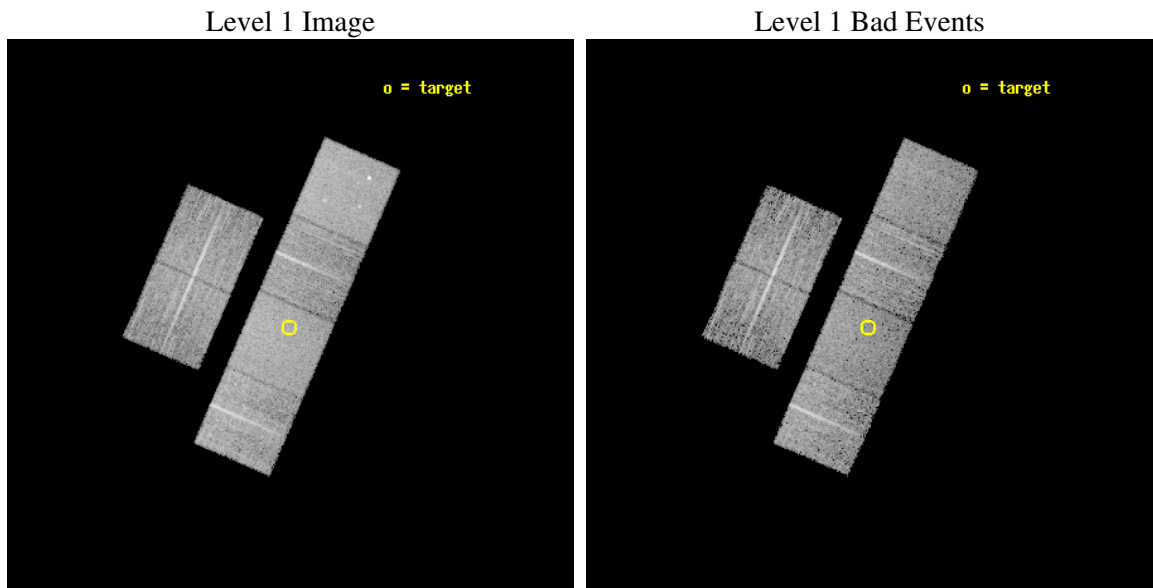
seq_num	700911
obs_id	4829
title	Constraining the Hard-X-ray Through Submm SEDs of a Complete Sample of Broad Absorption Line Quasars
observer	Dr. Sarah Gallagher
object	LBQS 0010-0012
dtcycle	0
cycle	P
ra_targ	3.275417
dec_targ	0.075472
ra_nom	3.2731323211276
dec_nom	0.084892326894758
roll_nom	113.46699716461
revision	2
ontime	6745.5999748707
livetime	6660.1831262762
ontime2	6745.5999748707
ontime3	6745.583612293
ontime5	6745.5999748707
ontime6	6745.5999748707
ontime7	6745.5999748707
ontime8	6745.5425723195
l2events	76694



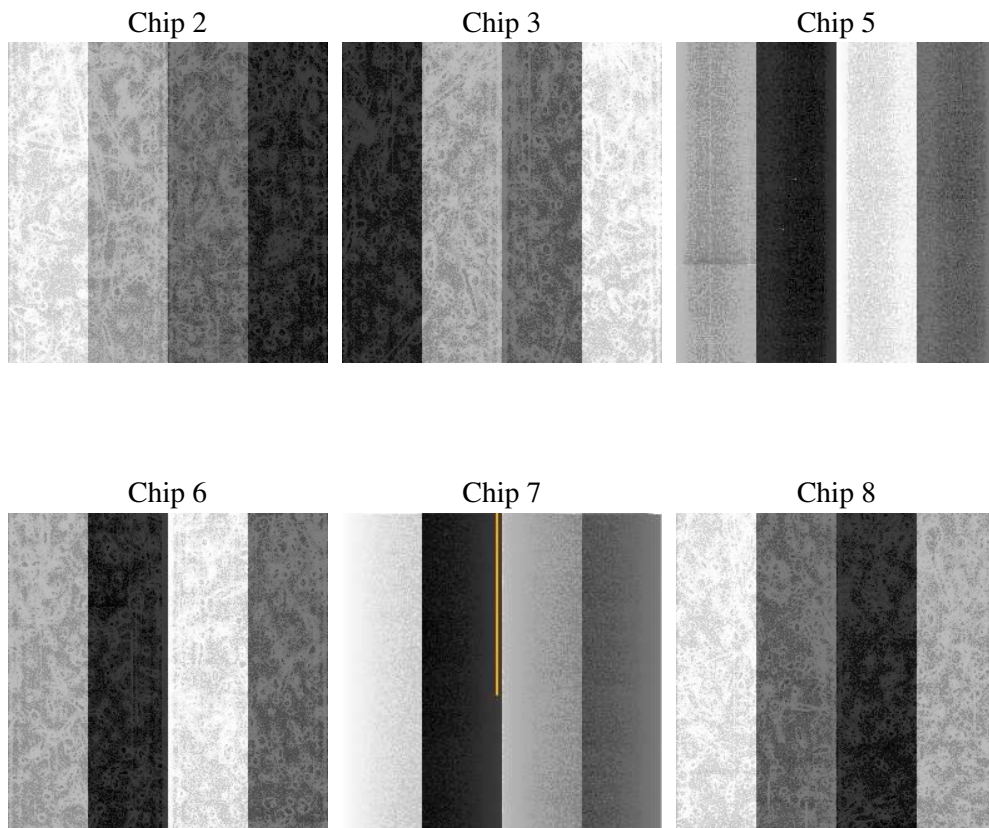
2 OBI

2.1 OBI

2.1.1 Images



2.1.2 Bias



2.1.3 Parameters

obi_num	1
ascdsver	7.6.7.2
caldsver	3.2.2
date	2006-05-23T21:03:32
revision	2

sched_exp_time	6784.000000
ontime	6747.7661491334
ontime2	6747.7661192417
ontime3	6747.7661192417
ontime5	6747.7661192417
ontime6	6747.7661192417
ontime7	6747.7661491334
ontime8	6747.7661192417
l1events	357907

2.1.4 Events

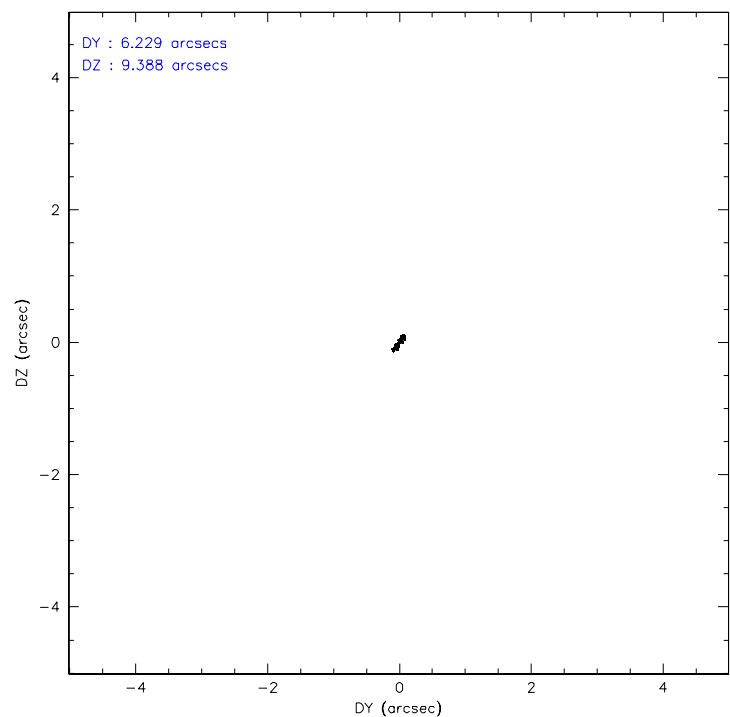
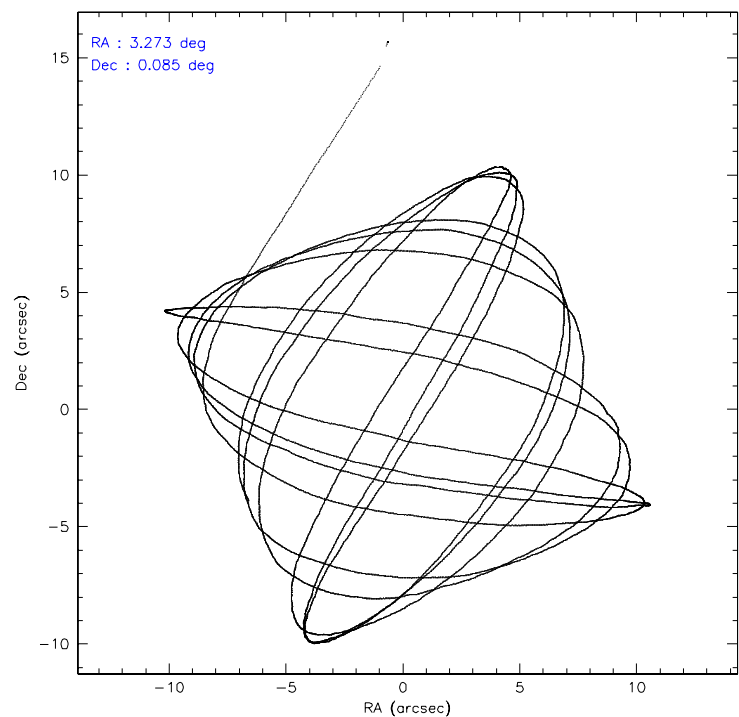
	ccd 2	ccd 3	ccd 5	ccd 6	ccd 7	ccd 8
level 1 events	51741	49705	73492	51474	66889	64606
rejected events	45813	43971	41264	45678	41270	51262
rejected %	88%	88%	56%	88%	61%	79%

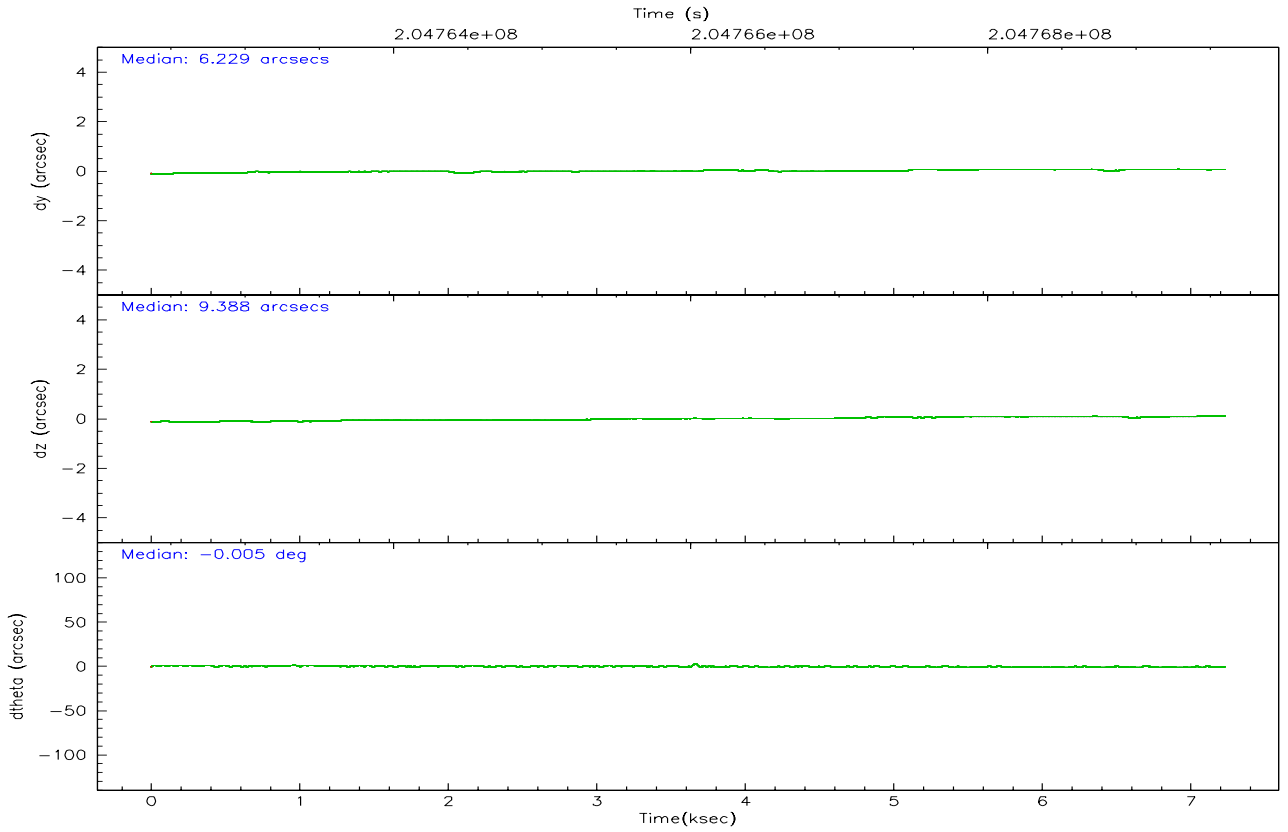
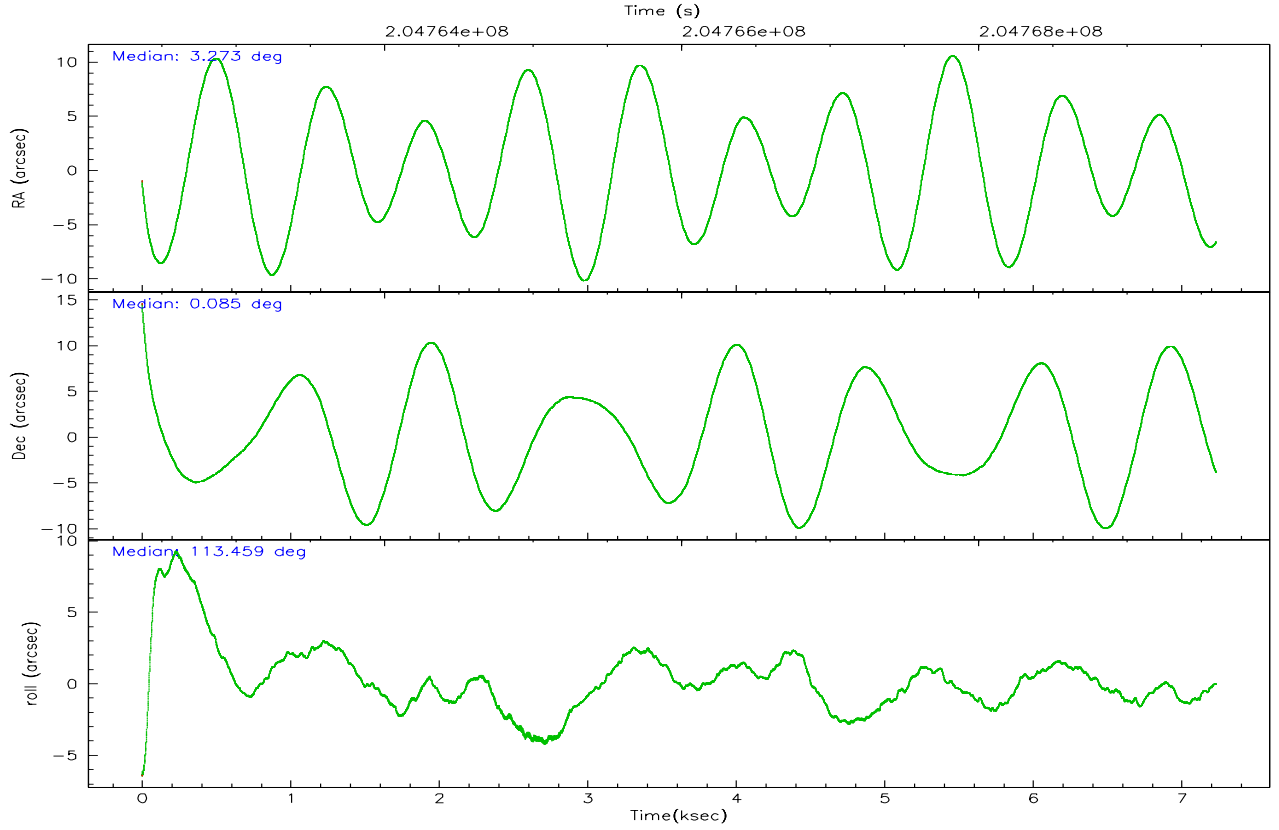
	ccd 2	ccd 3	ccd 5	ccd 6	ccd 7	ccd 8
grade 0 events	2591	2485	2204	2264	1483	4346
	5%	4%	2%	4%	2%	6%
grade 1 events	30	28	84	24	35	46
	0%	0%	0%	0%	0%	0%
grade 2 events	1238	1052	9891	1195	6346	2929
	2%	2%	13%	2%	9%	4%
grade 3 events	555	589	736	575	1294	1407
	1%	1%	1%	1%	1%	2%
grade 4 events	579	578	670	569	1270	1340
	1%	1%	0%	1%	1%	2%
grade 5 events	2077	2188	3562	2269	4414	3062
	4%	4%	4%	4%	6%	4%
grade 6 events	968	1035	18741	1198	15239	3325
	1%	2%	25%	2%	22%	5%
grade 7 events	43703	41750	37604	43380	36808	48151
	84%	83%	51%	84%	55%	74%

2.2 Compared Parameters

Parameter	Planned	Actual	Parameter	Planned	Actual
Instrument	ACIS	ACIS	Obspar format version number	6	6
Detector	ACIS-235678	ACIS-235678	Obspar file type	PREDICTED	ACTUAL
Grating	NONE	NONE	Obspar update status	NONE	UPDATED
Data mode	FAINT	FAINT	On-chip summing requested	N	N
Observation mode	POINTING	POINTING	Subarray requested	NONE	NONE
Pointing RA	3.295277	3.273132321127585	Alternating exposures requested	N	N
Pointing Dec	0.068971	0.08489232689475837	Primary exposure time	0.000000	3.2
Pointing Roll	113.310364	113.4669971646074			
SIM focus pos (mm)	-0.684267	-0.6828225247311905			
SIM defocus (mm)	0	0.001444936568705701			
SIM translation stage pos (mm)	-190.132523	-190.1400660498719			
SIM translation stage offset (mm)	0	0.00754346686406393			
Observation start time	204762813.184000	204761712.75218			
Observation start date	2004-06-27T22:32:29	2004-06-27T22:15:12			
Observation end time	204769597.184000	204770126.46505			
Observation end date	2004-06-28T00:25:33	2004-06-28T00:35:26			
Read mode	TIMED	TIMED			

2.3 Aspect



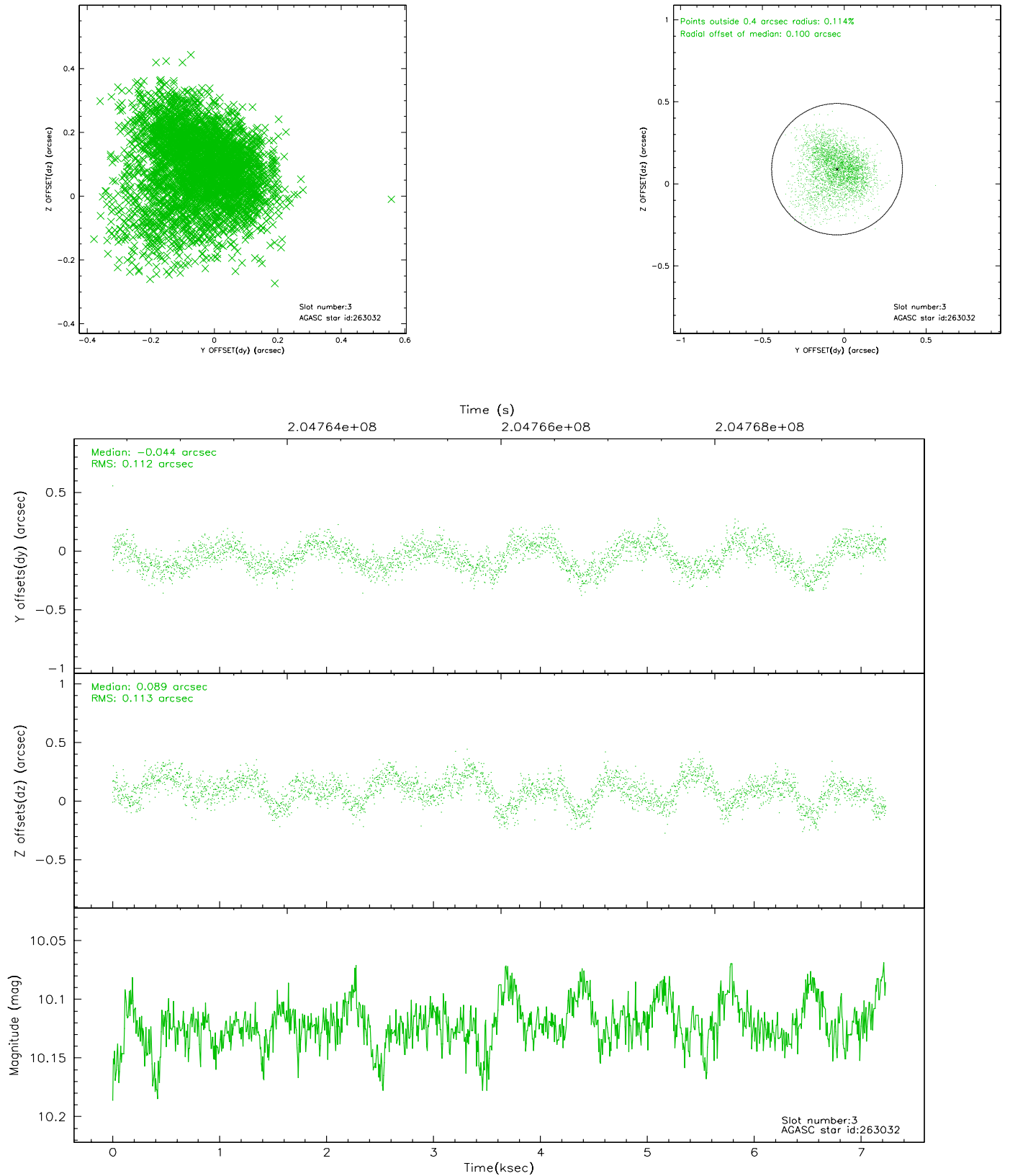


Slot Statistics

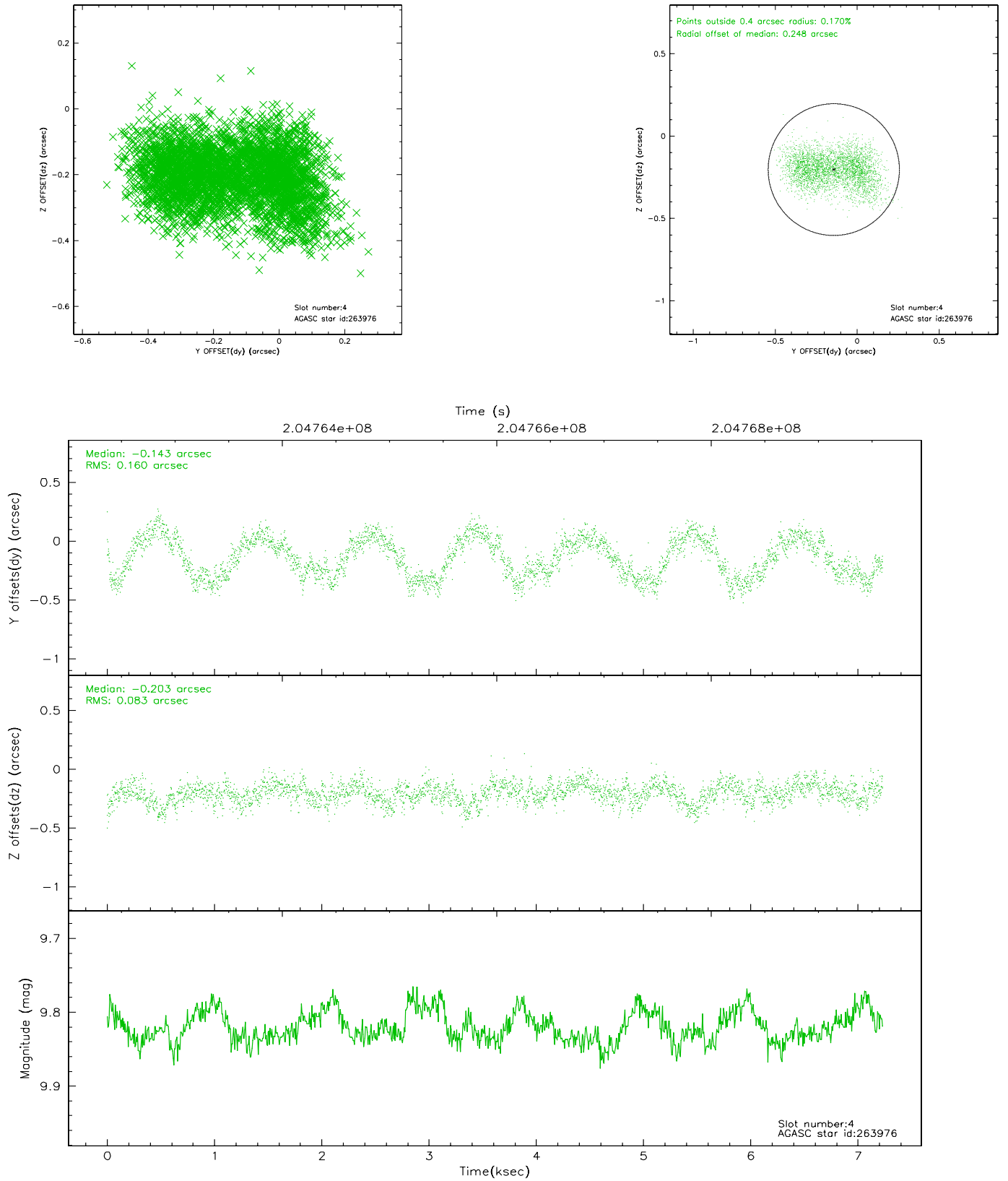
slot	status	id	mag	n_pts	med_dy	med_dz	dr1	dr2	ra	dec	mean_y	mean_z
0	FID	ACIS-S-2	7.10	1765	-0.045	-0.017	0.006	0.010	0.000000	0.000000	-758.99	-1730.64
1	FID	ACIS-S-4	7.21	1765	0.052	0.026	0.005	0.009	0.000000	0.000000	2154.00	177.09
2	FID	ACIS-S-5	7.23	1765	-0.038	-0.000	0.006	0.010	0.000000	0.000000	-1810.83	171.60
3	GUIDE	263032	10.12	3524	-0.044	0.089	0.170	0.273	3.396655	0.471240	1185.36	-908.06
4	GUIDE	263976	9.82	3526	-0.143	-0.203	0.199	0.292	2.919483	0.122082	711.04	1166.47
5	GUIDE	270728	9.24	3529	0.061	0.358	0.110	0.174	3.932457	0.117996	-745.02	-2175.81
6	GUIDE	611322832	9.88	3526	0.113	-0.095	0.125	0.201	3.142733	-0.431778	-1438.64	1216.68
7	GUIDE	611323648	8.91	3524	0.011	-0.148	0.091	0.146	2.997068	-0.229699	-563.17	1411.60

2.4 Star Slots

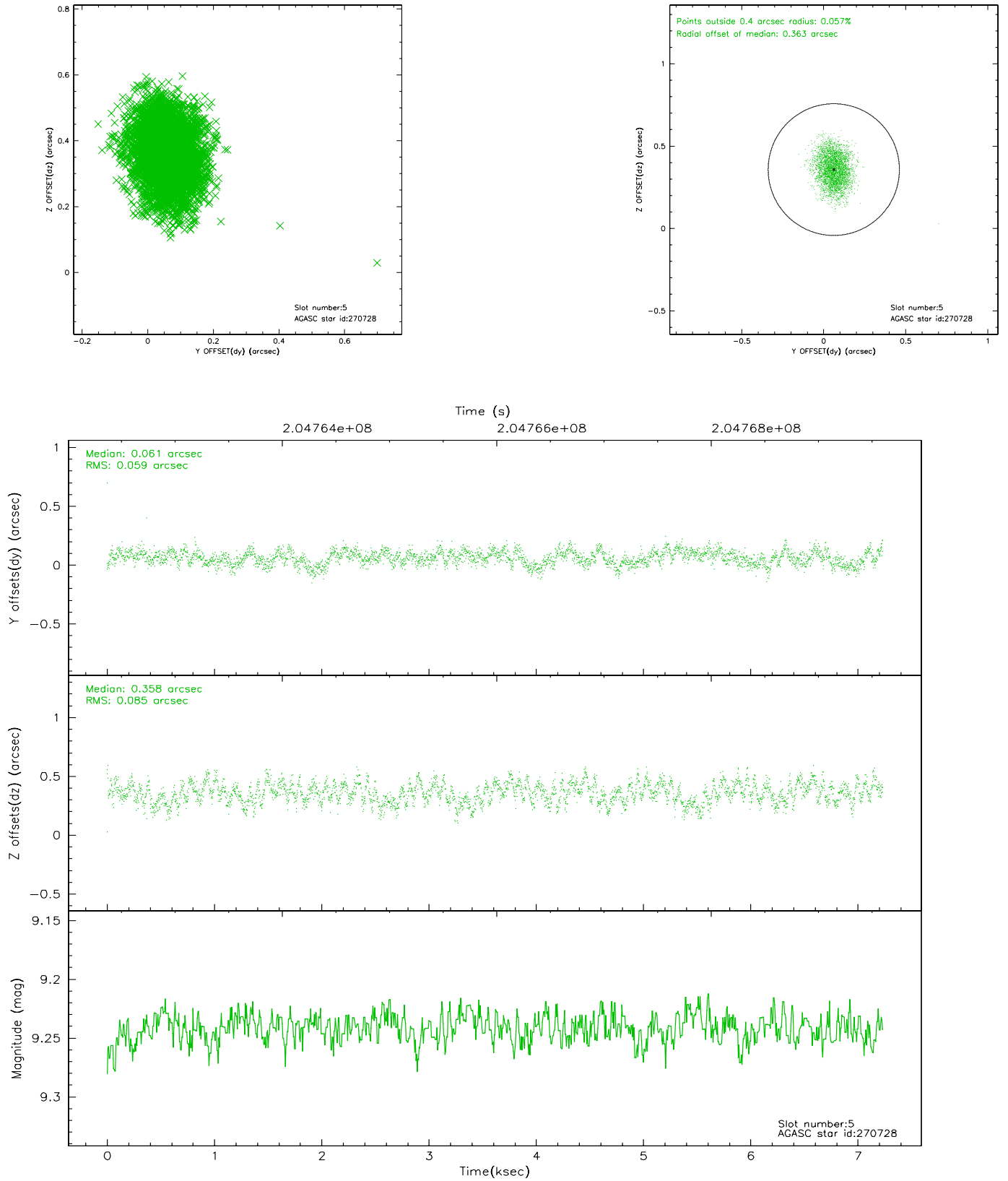
2.4.1 Slot 3



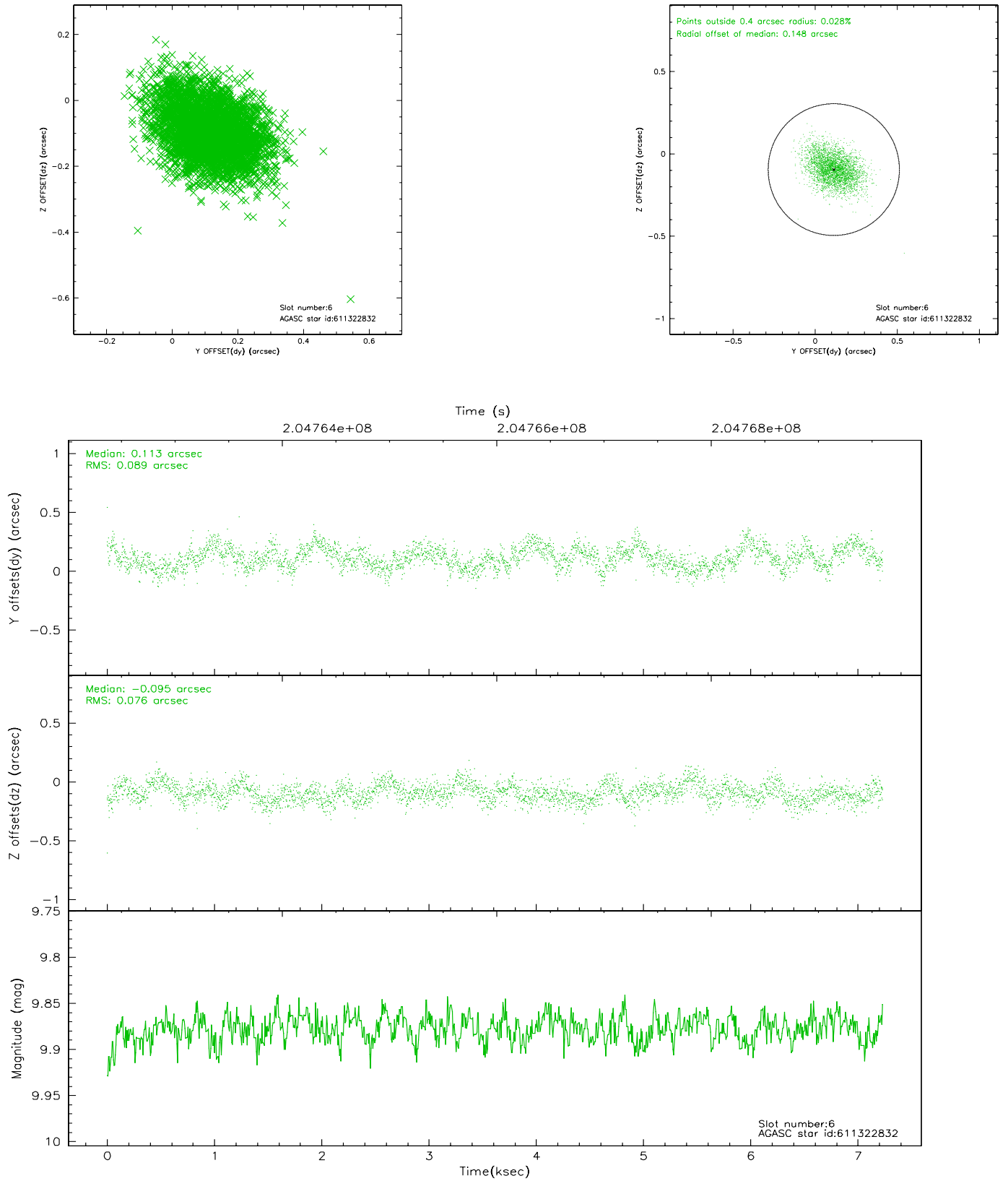
2.4.2 Slot 4



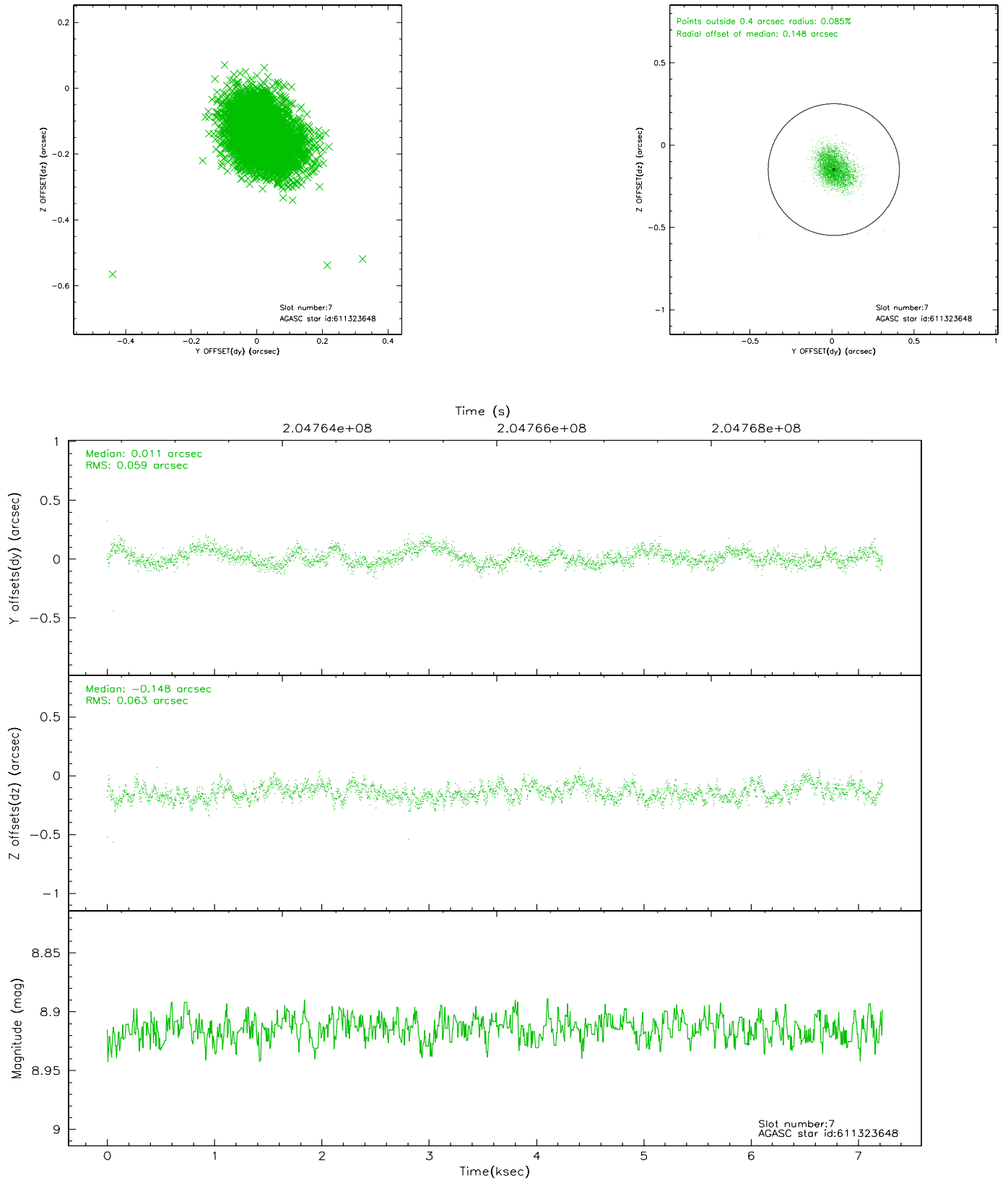
2.4.3 Slot 5



2.4.4 Slot 6

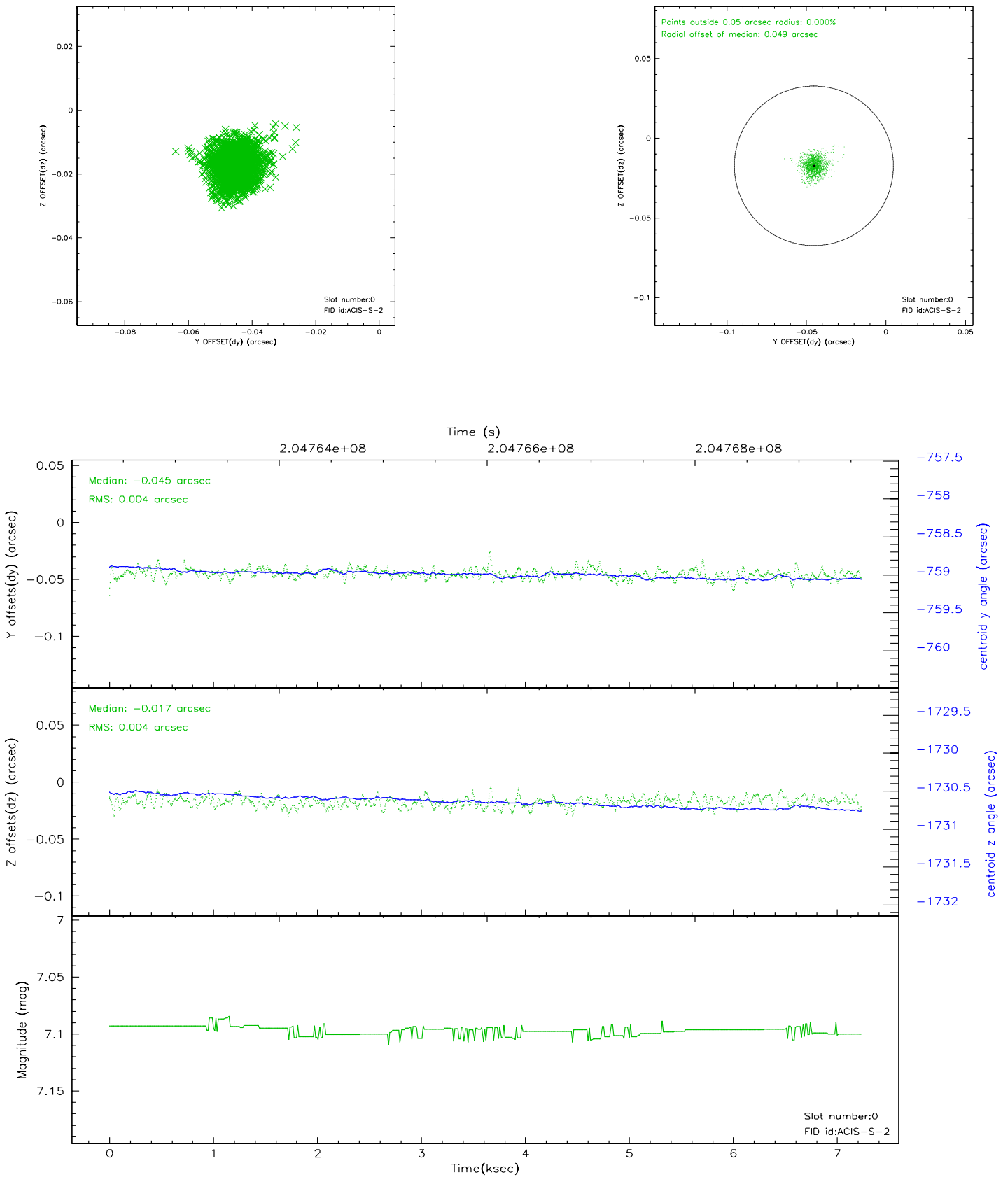


2.4.5 Slot 7

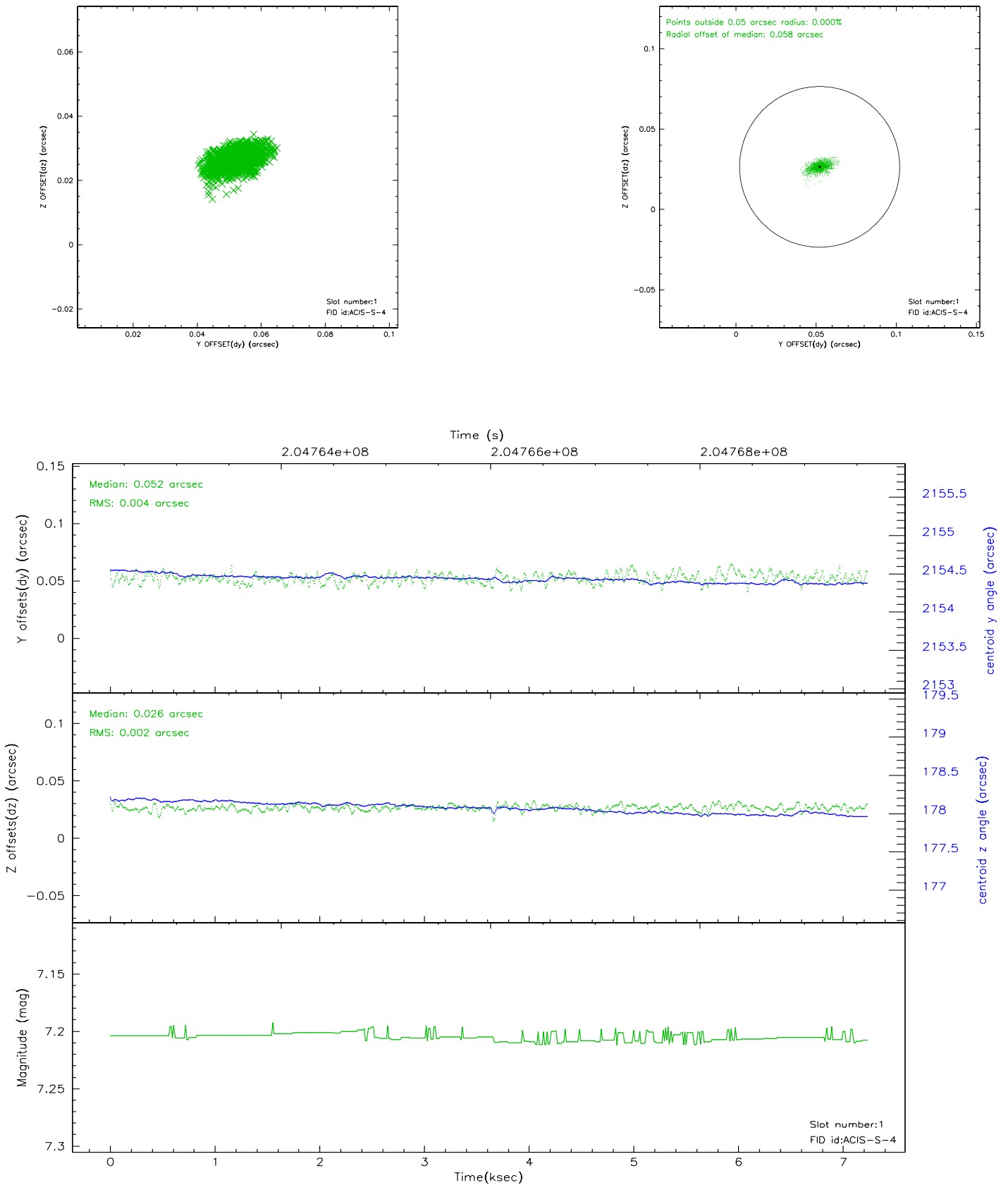


2.5 FID Slots

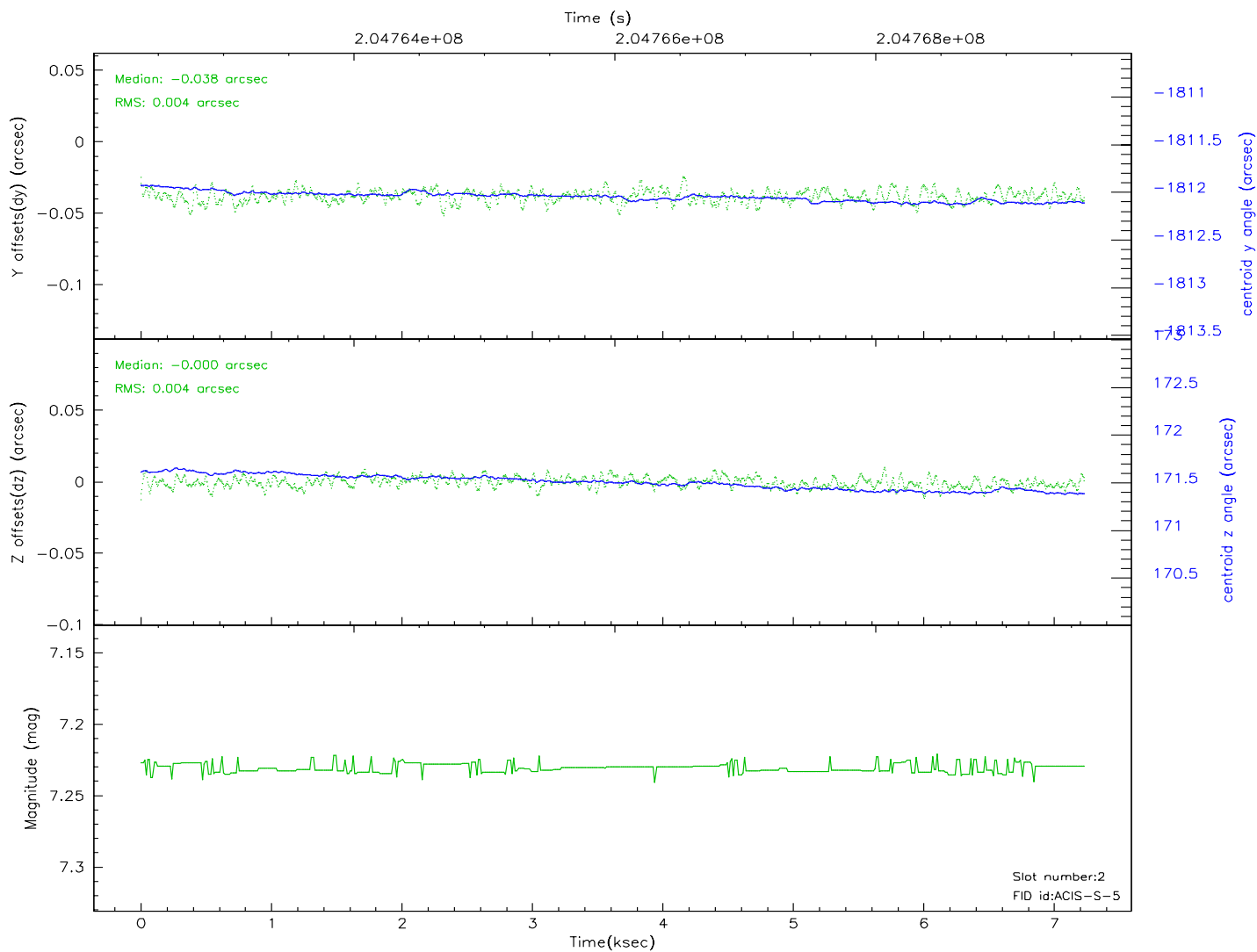
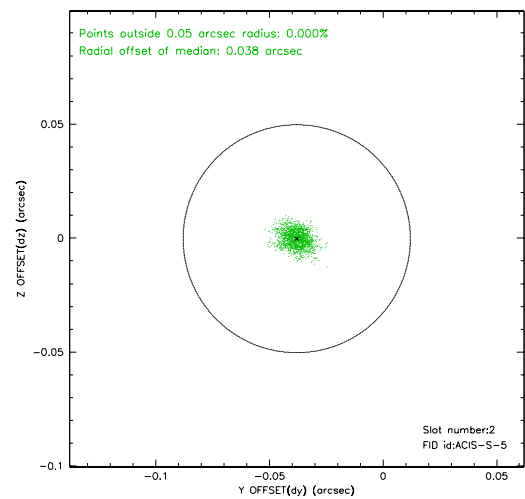
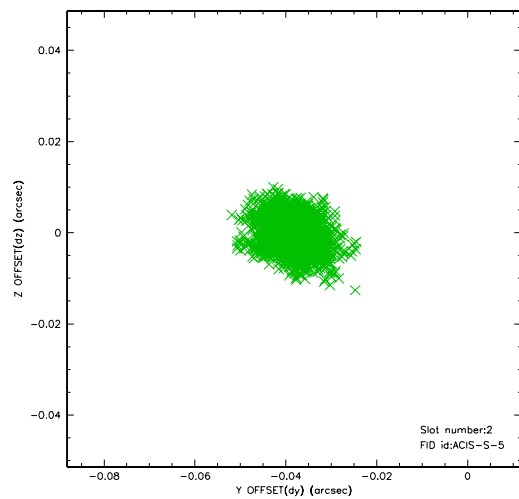
2.5.1 Slot 0



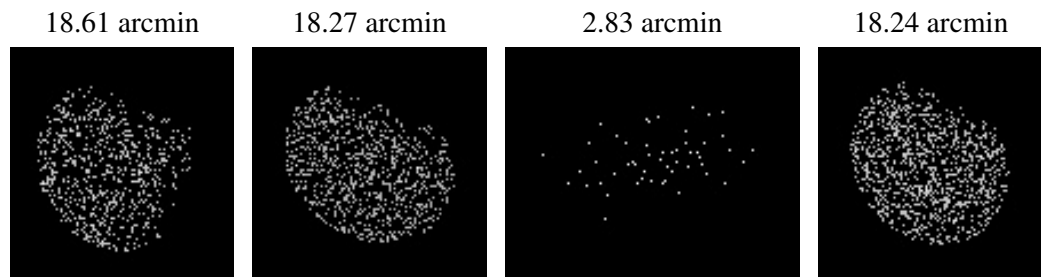
2.5.2 Slot 1



2.5.3 Slot 2



3 Point Sources



A Summary

A.1 Status

V&V Scientist	Jen Lauer
V&V Date (YYYY-MM-DD)	2006.05.24
V&V Edition	1
V&V Disposition and Status	OK
V&V Charge Time	6.745

A.2 Comments