

V&V Reference Report

L2 ASCDS Version : 7.6.7

Observation 4824 - L2 Version 003
Chandra X-Ray Center

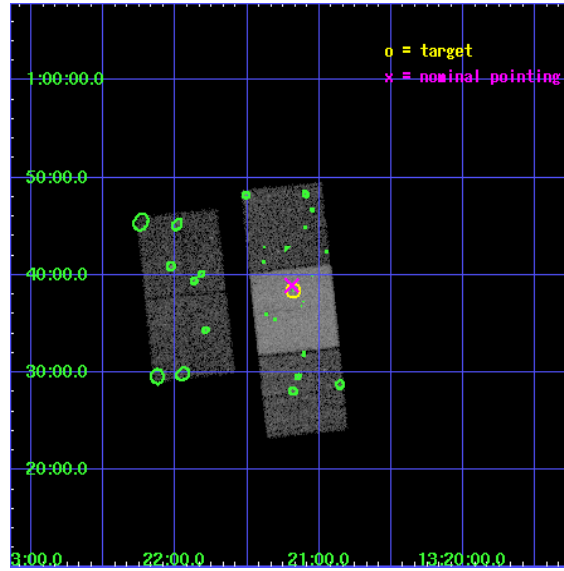
L2 Processing Date: Feb 26 2006

Contents

1	Front	2
2	OBI	3
2.1	OBI	3
2.1.1	Images	3
2.1.2	Bias	3
2.1.3	Parameters	4
2.1.4	Events	4
2.2	Compared Parameters	5
2.3	Aspect	6
2.4	Star Slots	9
2.4.1	Slot 3	9
2.4.2	Slot 4	10
2.4.3	Slot 5	11
2.4.4	Slot 6	12
2.5	FID Slots	13
2.5.1	Slot 0	13
2.5.2	Slot 1	14
2.5.3	Slot 2	15
3	Point Sources	16
A	Summary	17
A.1	Status	17
A.2	Comments	17

1 Front

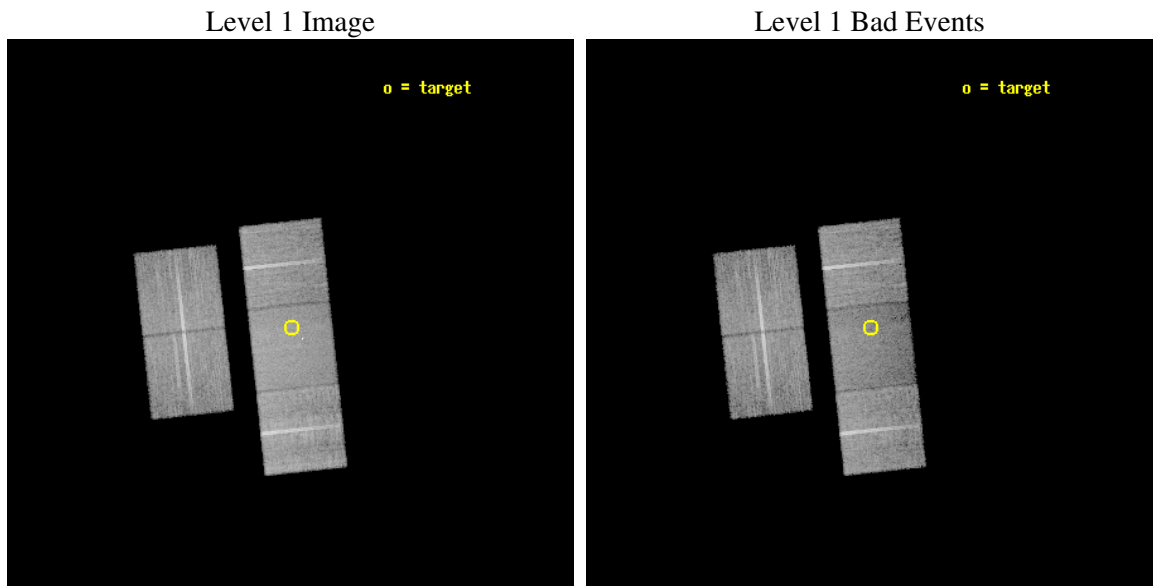
seq_num	700906
obs_id	4824
title	Destroying Degeneracy: Spanning the Luminosity Range for Radio-Quiet Quasars at $z=4$
observer	Dr. Jill Bechtold
object	SDS 1321+0038
dtcycle	0
cycle	P
ra_targ	200.295
dec_targ	0.639444
ra_nom	200.29771082419
dec_nom	0.64871751946767
roll_nom	83.856616396335
revision	3
ontime	18035.799965322
livetime	17800.148961012
ontime2	18032.658975065
ontime3	18035.799965322
ontime6	18035.799965322
ontime7	18035.799965322
ontime8	18032.658955187
l2events	91573



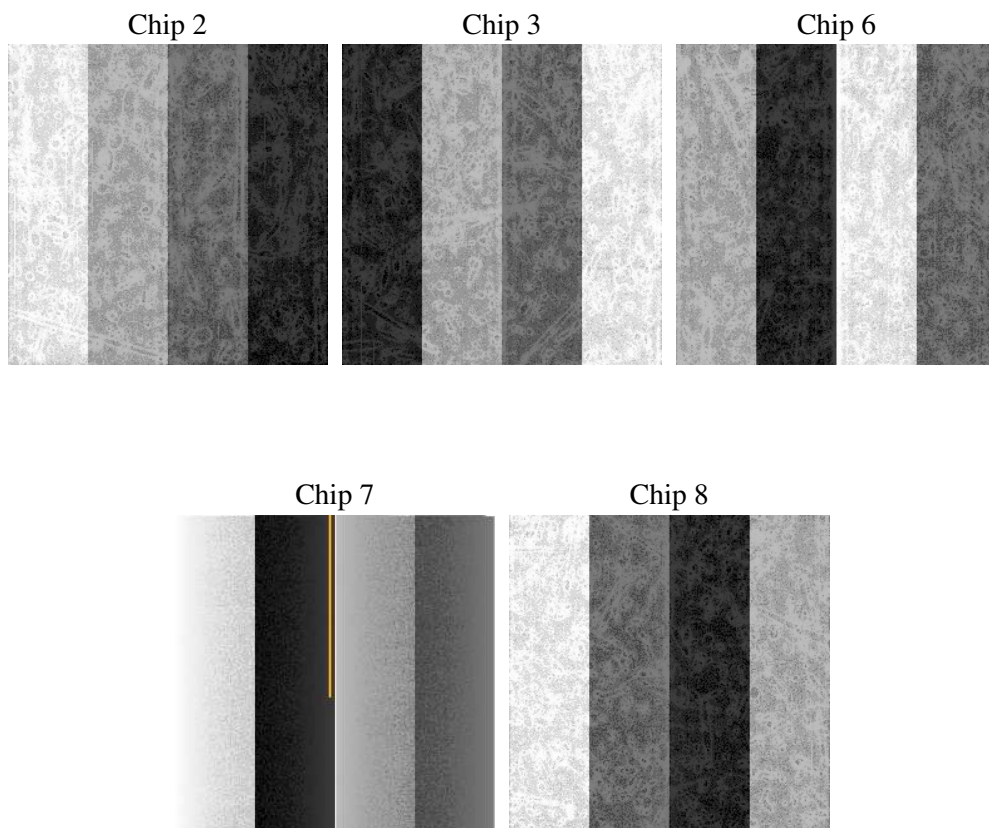
2 OBI

2.1 OBI

2.1.1 Images



2.1.2 Bias



2.1.3 Parameters

obi_num	1
ascdsver	7.6.7
caldbver	3.2.1
date	2006-02-26T16:24:51
revision	3

sched_exp_time	18000.000000
ontime	18041.989547253
ontime2	18038.848537117
ontime3	18041.989527375
ontime6	18041.989527375
ontime7	18041.989547253
ontime8	18038.848517239
l1events	604469

2.1.4 Events

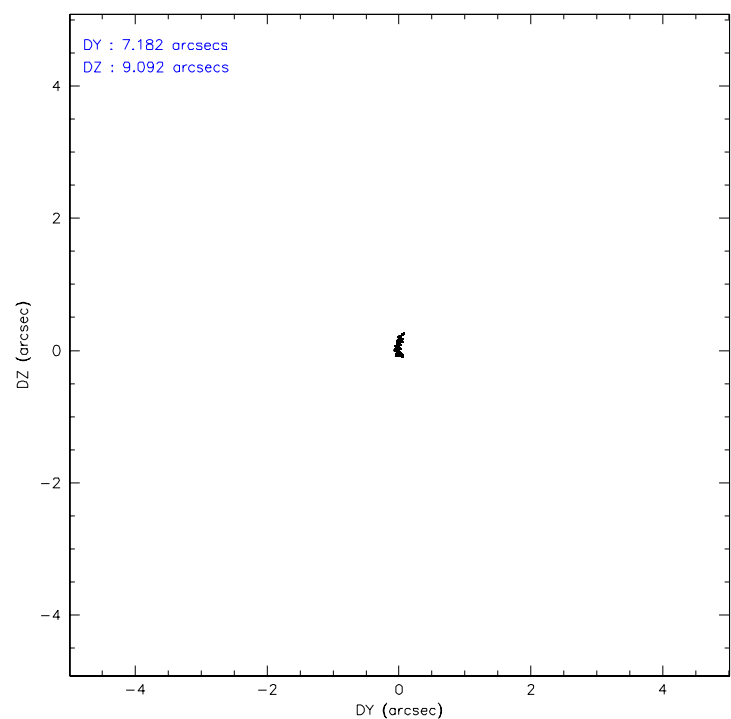
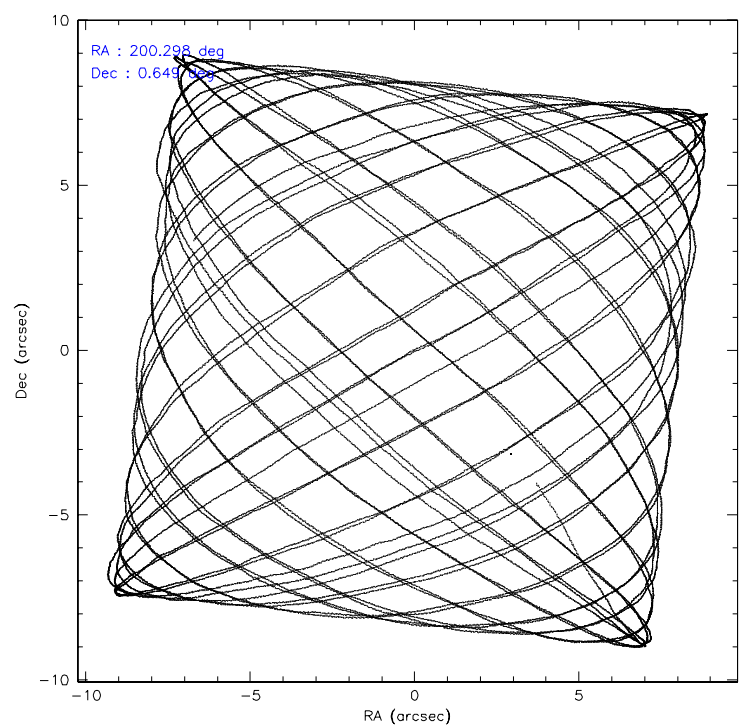
	ccd 2	ccd 3	ccd 6	ccd 7	ccd 8
level 1 events	112180	110666	114015	124993	142615
rejected events	101298	100338	102297	72738	108389
rejected %	90%	90%	89%	58%	76%

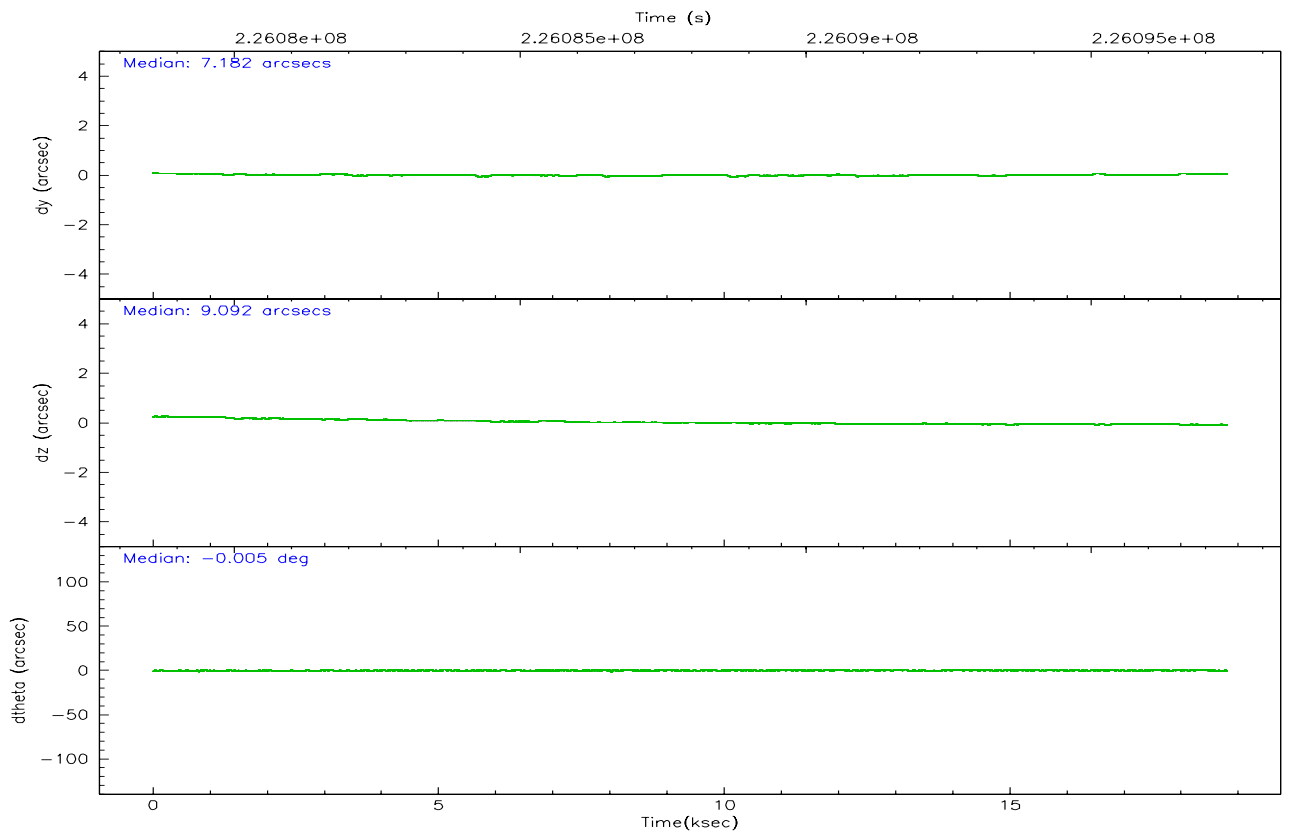
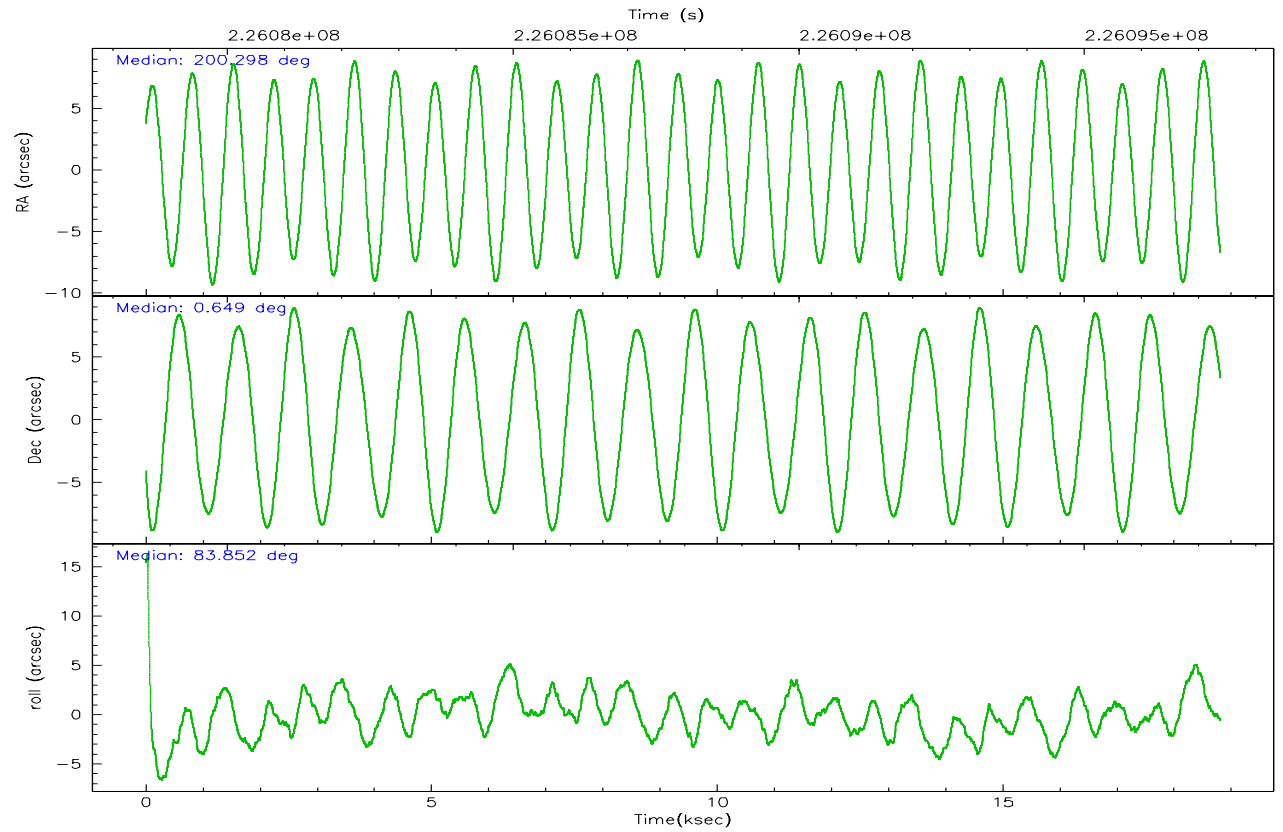
	ccd 2	ccd 3	ccd 6	ccd 7	ccd 8
grade 0 events	3951	3648	4237	3221	10379
	3%	3%	3%	2%	7%
grade 1 events	74	55	47	70	94
	0%	0%	0%	0%	0%
grade 2 events	2513	2200	2440	13090	7259
	2%	1%	2%	10%	5%
grade 3 events	1267	1202	1260	3002	4027
	1%	1%	1%	2%	2%
grade 4 events	1185	1161	1231	2916	3643
	1%	1%	1%	2%	2%
grade 5 events	3648	4369	4505	9426	6374
	3%	3%	3%	7%	4%
grade 6 events	1971	2120	2555	30036	8922
	1%	1%	2%	24%	6%
grade 7 events	97571	95911	97740	63232	101917
	86%	86%	85%	50%	71%

2.2 Compared Parameters

Parameter	Planned	Actual	Parameter	Planned	Actual
Instrument	ACIS	ACIS	Obspar format version number	6	6
Detector	ACIS-23678	ACIS-23678	Obspar file type	PREDICTED	ACTUAL
Grating	NONE	NONE	Obspar update status	NONE	UPDATED
Data mode	VFAINT	VFAINT	On-chip summing requested	N	N
Observation mode	POINTING	POINTING	Subarray requested	NONE	NONE
Pointing RA	200.309051	200.2977108241909	Alternating exposures requested	N	N
Pointing Dec	0.623977	0.6487175194676698	Primary exposure time	0.000000	3.1
Pointing Roll	83.699849	83.85661639633503			
SIM focus pos (mm)	-0.684267	-0.6828225247311905			
SIM defocus (mm)	0	0.001444936568705701			
SIM translation stage pos (mm)	-190.132523	-190.1400660498719			
SIM translation stage offset (mm)	0	0.00754346686406393			
Observation start time	226079382.184000	226078144.14484			
Observation start date	2005-03-01T15:48:38	2005-03-01T15:29:04			
Observation end time	226097382.184000	226097828.24573			
Observation end date	2005-03-01T20:48:38	2005-03-01T20:57:08			
Read mode	TIMED	TIMED			

2.3 Aspect



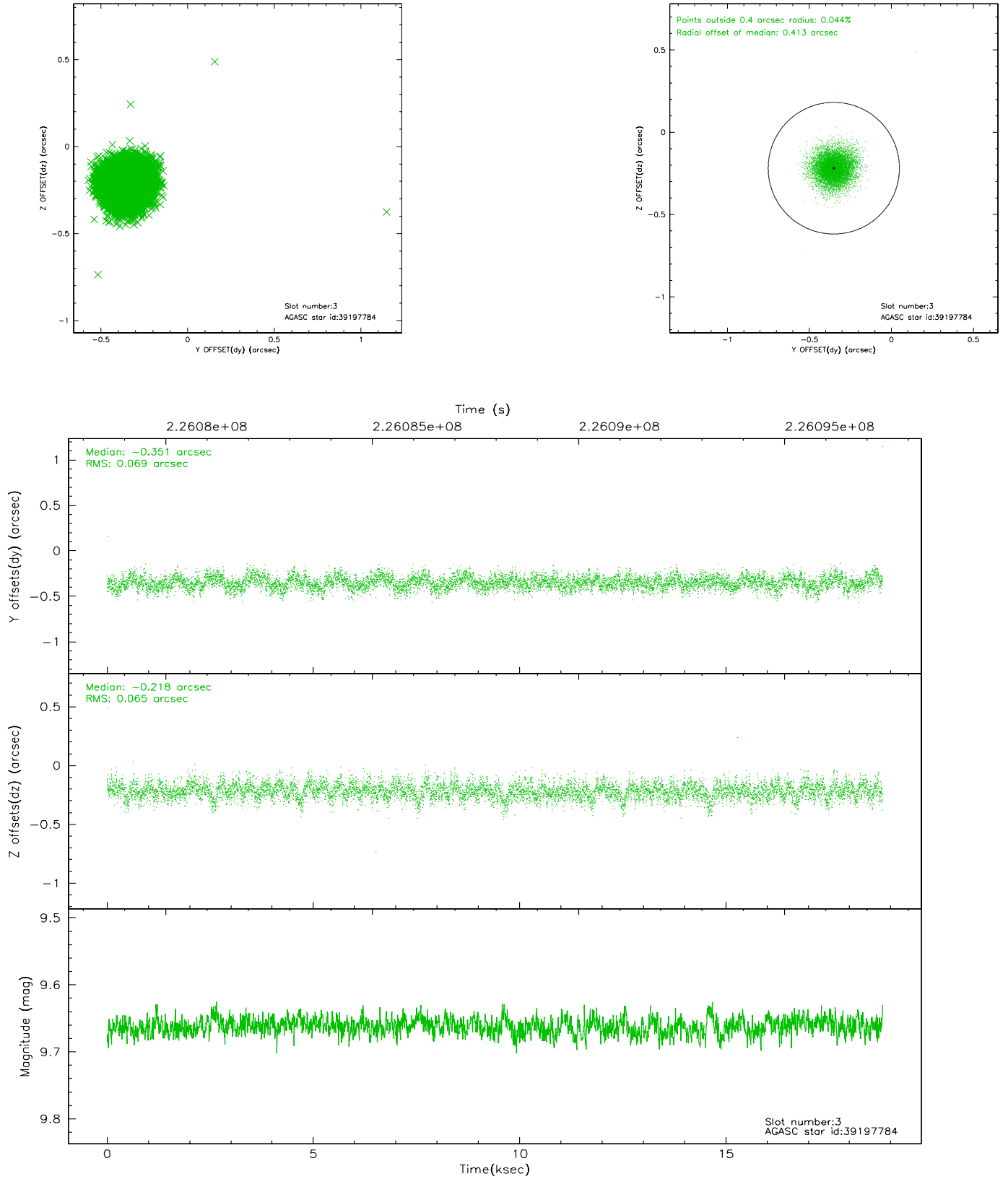


Slot Statistics

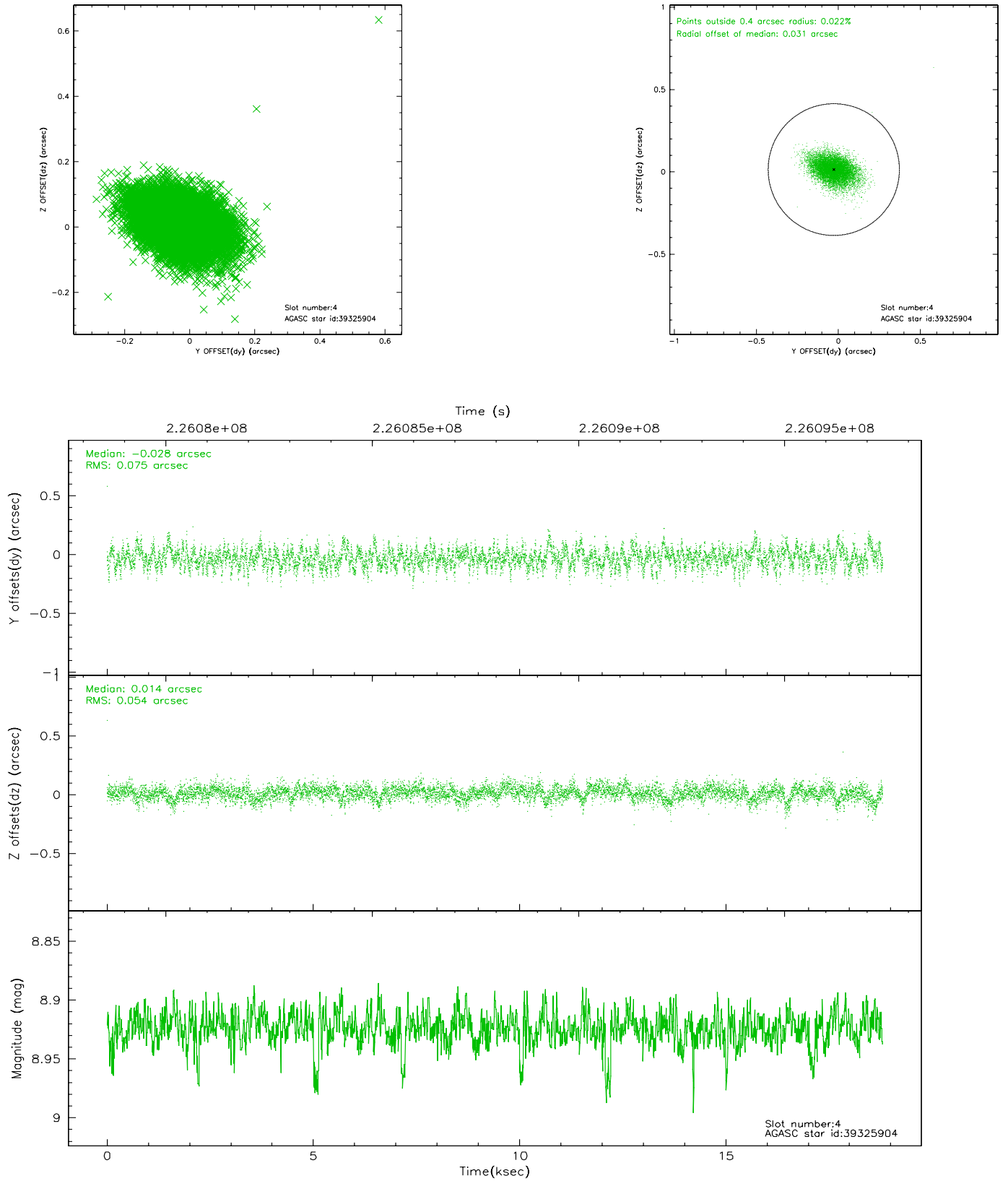
slot	status	id	mag	n_pts	med_dy	med_dz	dr1	dr2	ra	dec	mean_y	mean_z
0	FID	ACIS-S-2	7.10	4587	-0.029	-0.024	0.007	0.012	0.000000	0.000000	-759.95	-1730.38
1	FID	ACIS-S-4	7.21	4587	0.052	0.021	0.005	0.010	0.000000	0.000000	2153.29	177.96
2	FID	ACIS-S-5	7.23	4587	-0.054	0.012	0.007	0.011	0.000000	0.000000	-1812.57	171.82
3	GUIDE	39197784	9.66	9162	-0.351	-0.218	0.099	0.162	199.911028	1.264167	2133.70	1677.19
4	GUIDE	39325904	8.92	9166	-0.028	0.014	0.095	0.162	201.024165	1.205349	2363.82	-2328.21
5	GUIDE	39326016	10.02	9161	0.298	0.003	0.119	0.205	200.101287	0.633158	-48.28	746.95
6	GUIDE	39327968	9.36	9167	0.077	0.204	0.108	0.169	200.905774	0.519018	-139.22	-2176.06
7	OMITTED		0.00	0	0.000	0.000	0.000	0.000	0.000000	0.000000	0.00	0.00

2.4 Star Slots

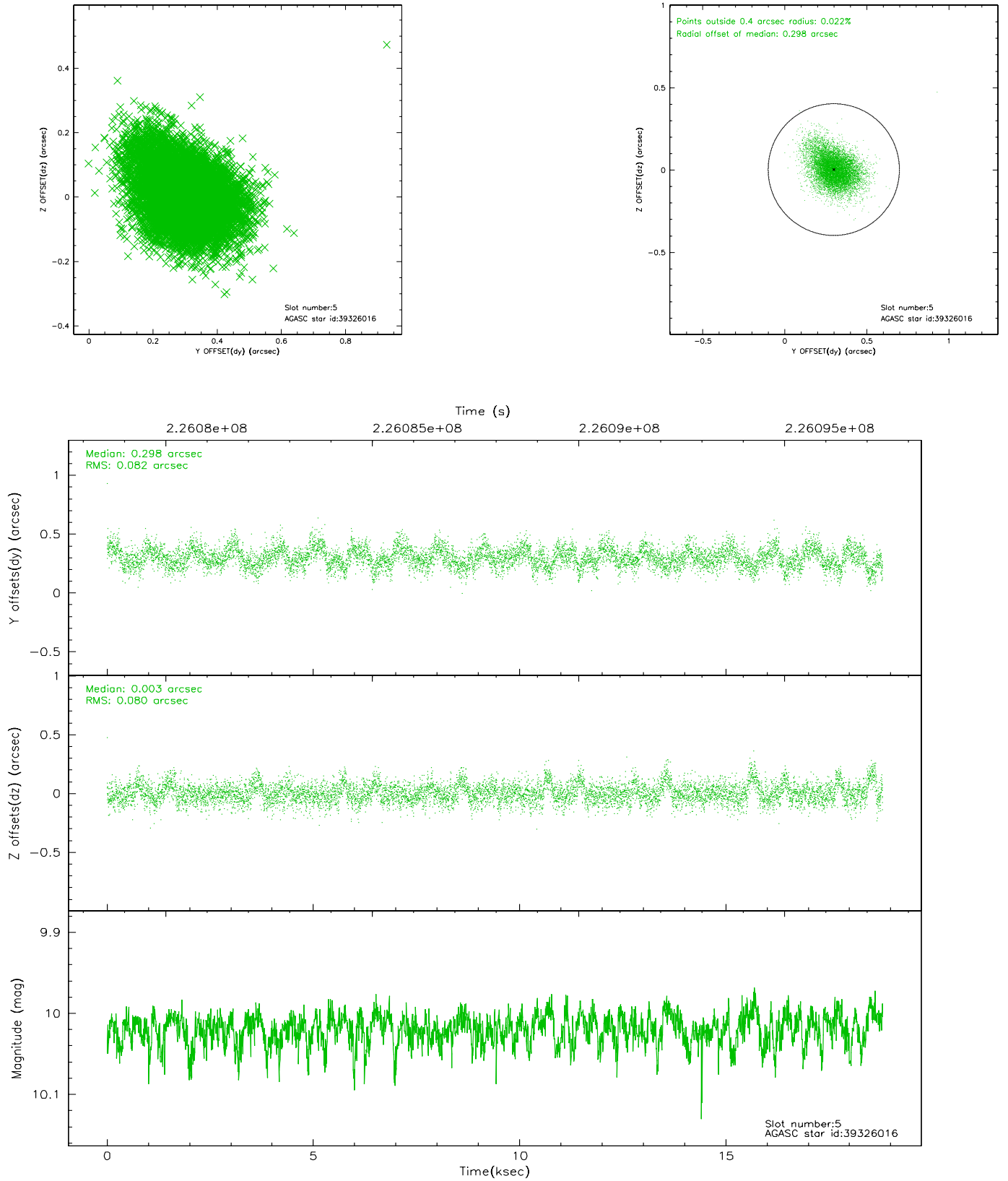
2.4.1 Slot 3



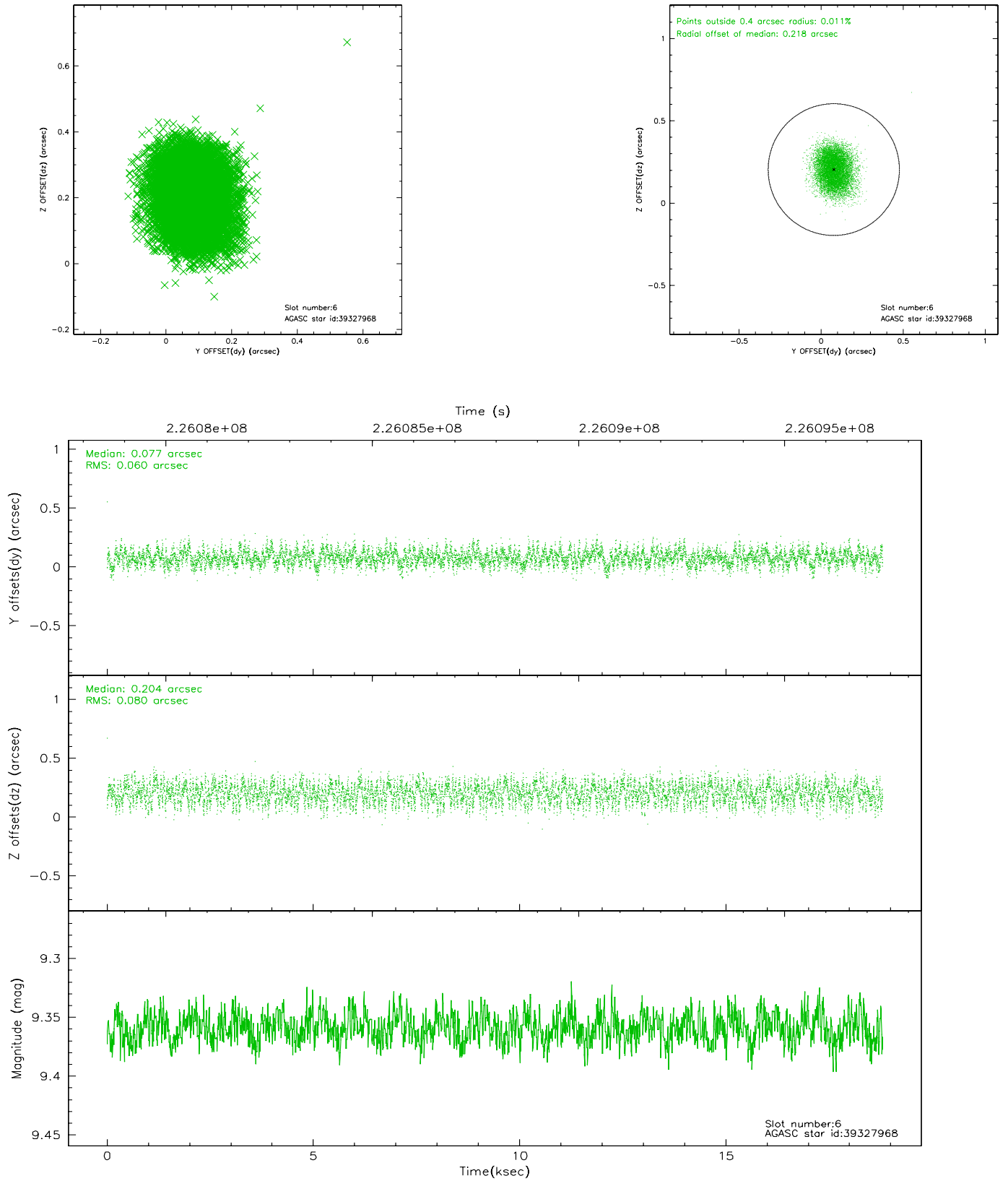
2.4.2 Slot 4



2.4.3 Slot 5

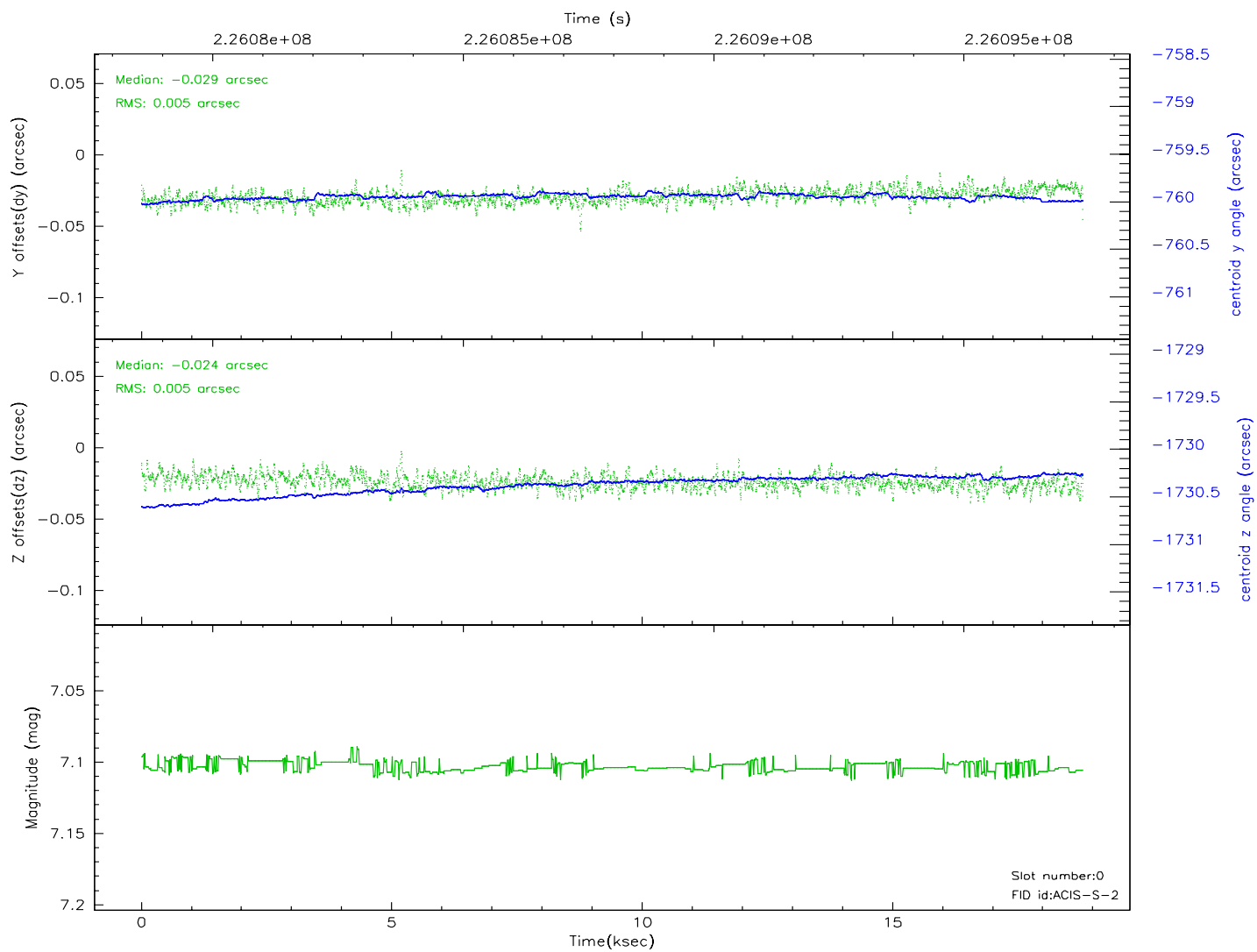
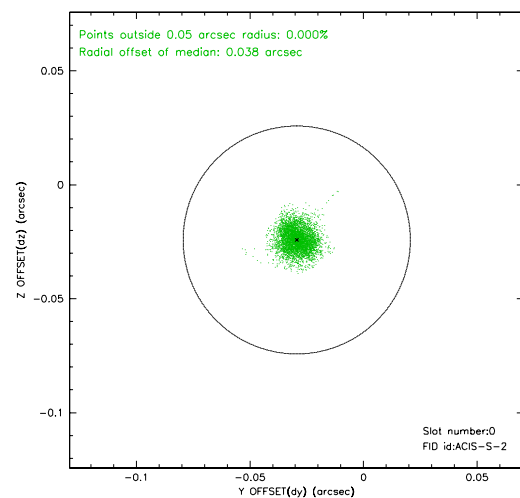
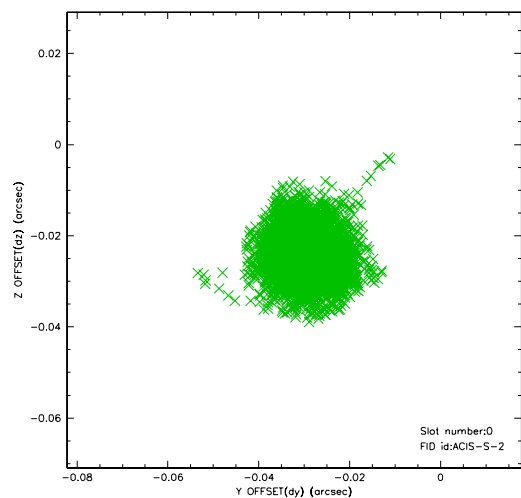


2.4.4 Slot 6

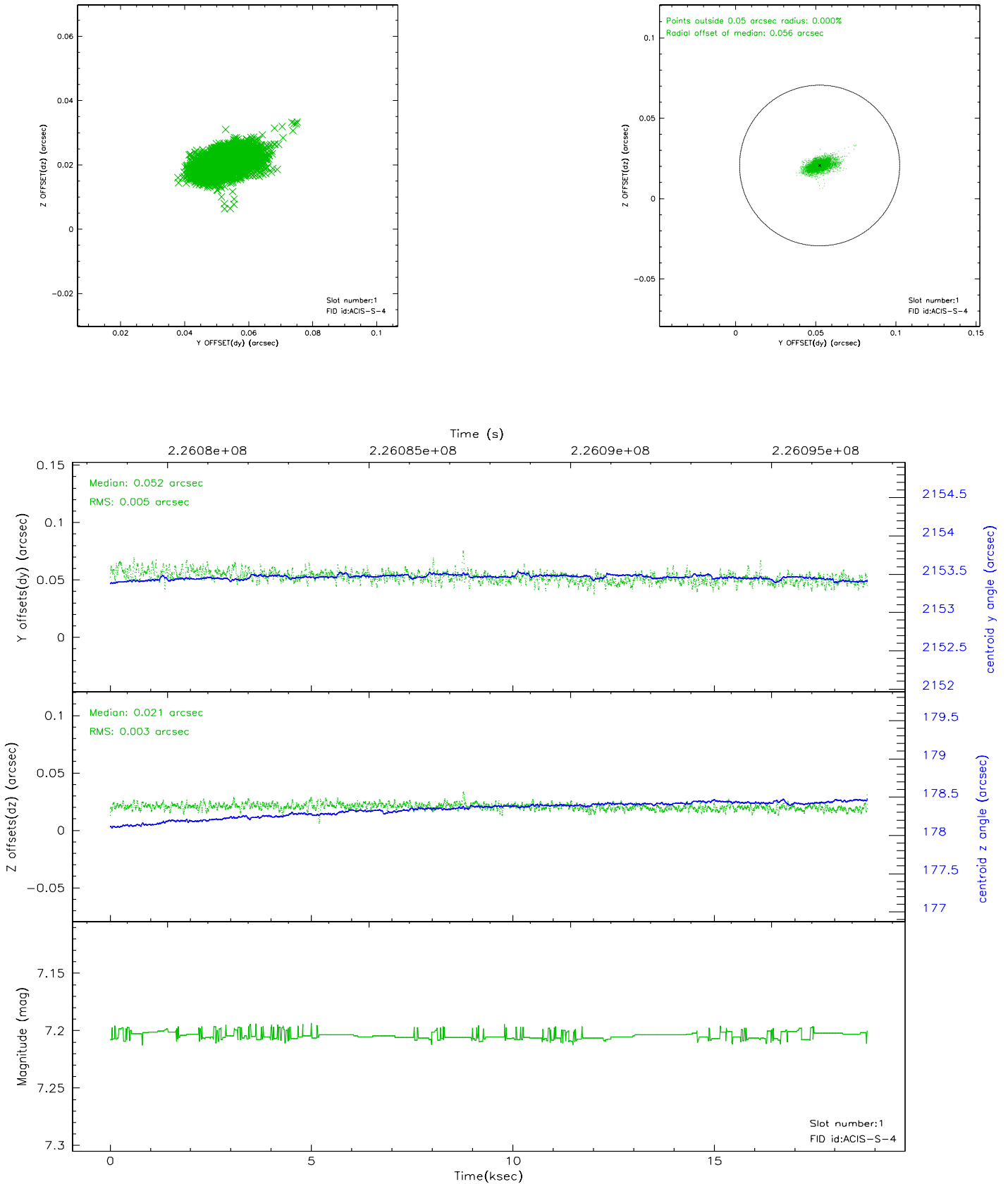


2.5 FID Slots

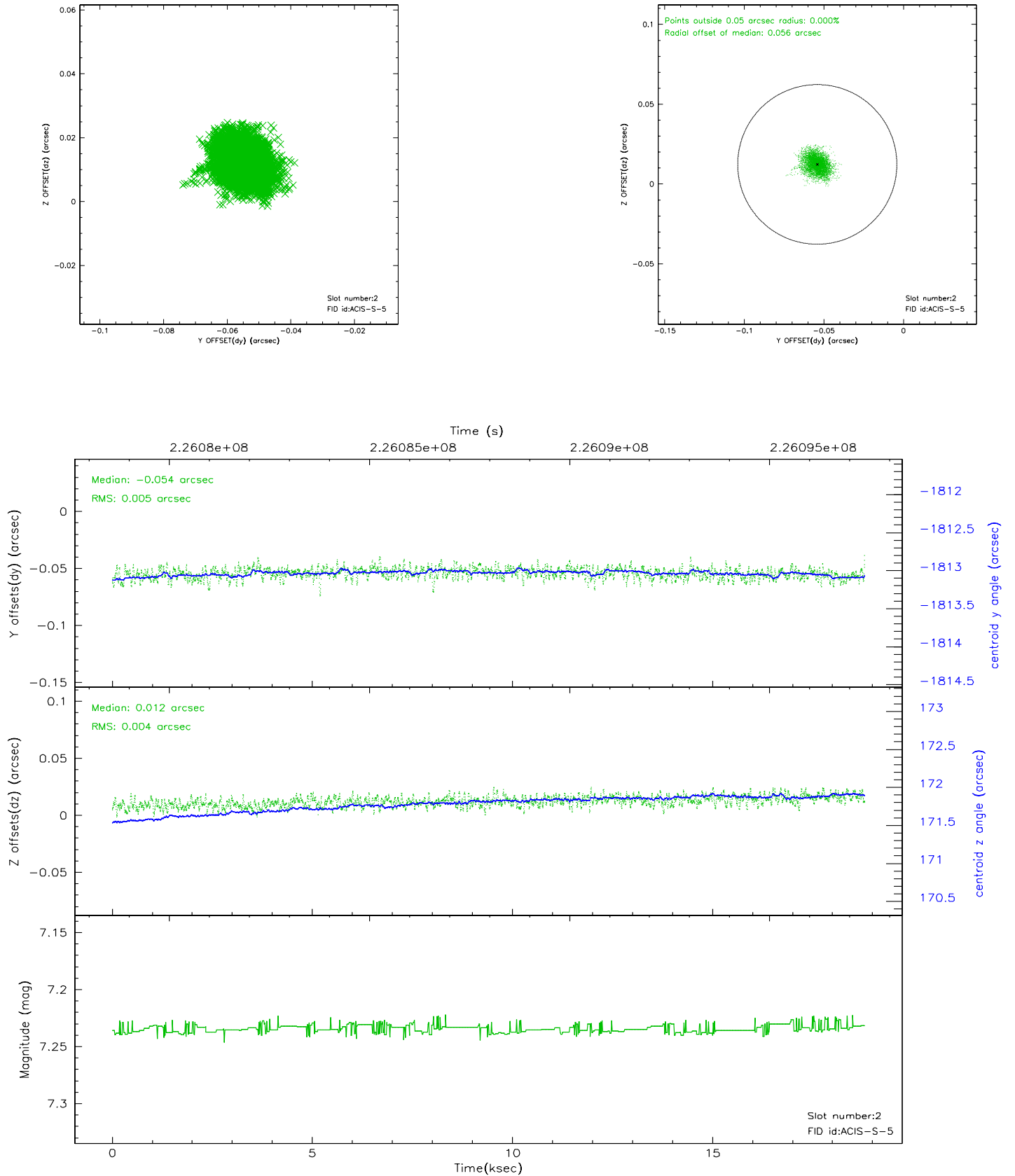
2.5.1 Slot 0



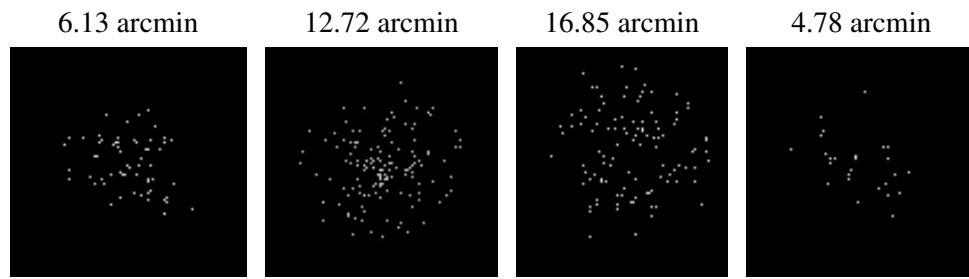
2.5.2 Slot 1



2.5.3 Slot 2



3 Point Sources



A Summary

A.1 Status

V&V Scientist	Beth Sundheim
V&V Date (YYYY-MM-DD)	2010.10.04
V&V Edition	2
V&V Disposition and Status	OK
V&V Charge Time	18.03579

A.2 Comments

The guide star in slot 7 was manually excluded from the processing due to poor data quality.