

# V&V Reference Report

## L2 ASCDS Version : 7.6.8

Observation 4799 - L2 Version 001  
Chandra X-Ray Center

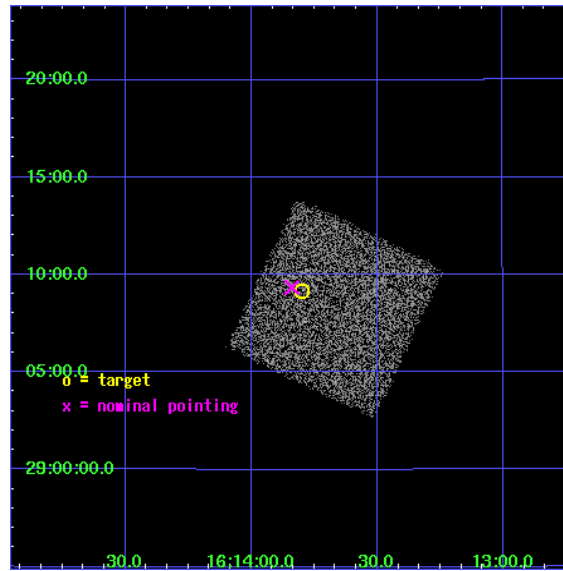
L2 Processing Date : Jun 22 2006

## Contents

<b>1</b>	<b>Front</b>	<b>2</b>
<b>2</b>	<b>OBI</b>	<b>3</b>
2.1	OBI . . . . .	3
2.1.1	Images . . . . .	3
2.1.2	Bias . . . . .	3
2.1.3	Parameters . . . . .	4
2.1.4	Events . . . . .	4
2.2	Compared Parameters . . . . .	5
2.3	Aspect . . . . .	6
2.4	Star Slots . . . . .	9
2.4.1	Slot 3 . . . . .	9
2.4.2	Slot 4 . . . . .	10
2.4.3	Slot 5 . . . . .	11
2.4.4	Slot 6 . . . . .	12
2.4.5	Slot 7 . . . . .	13
2.5	FID Slots . . . . .	14
2.5.1	Slot 0 . . . . .	14
2.5.2	Slot 1 . . . . .	15
2.5.3	Slot 2 . . . . .	16
<b>3</b>	<b>Point Sources</b>	<b>17</b>
<b>A</b>	<b>Summary</b>	<b>18</b>
A.1	Status . . . . .	18
A.2	Comments . . . . .	18

# 1 Front

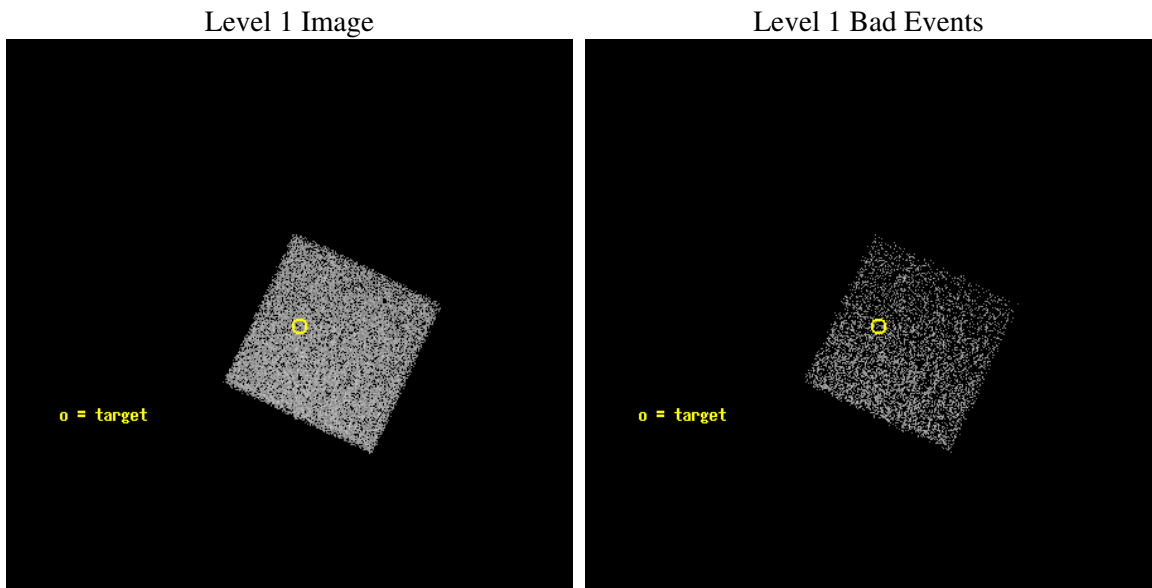
seq_num	700882
obs_id	4799
title	Anchoring the AGN X-ray Luminosity Function
observer	Dr. JOHN SALZER
object	F1610-1418
dtcycle	0
cycle	P
ra_targ	243.449167
dec_targ	29.153222
ra_nom	243.45979869617
dec_nom	29.155764007557
roll_nom	25.288442543391
revision	2
ontime	4098.0
livetime	4042.6959198169
ontime7	4098.0
l2events	12421



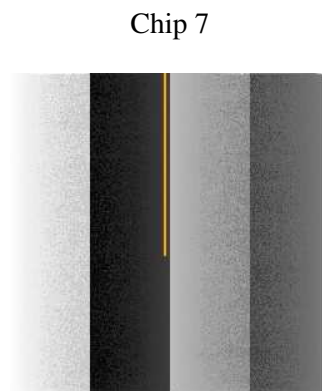
## 2 OBI

### 2.1 OBI

#### 2.1.1 Images



#### 2.1.2 Bias



### 2.1.3 Parameters

obi_num	0
ascdsver	7.6.8
caldbver	3.2.2
date	2006-06-22T04:06:48
revision	2

sched_exp_time	3956.000000
ontime	5096.7316815555
ontime7	5096.7316815555
l1events	41478

### 2.1.4 Events

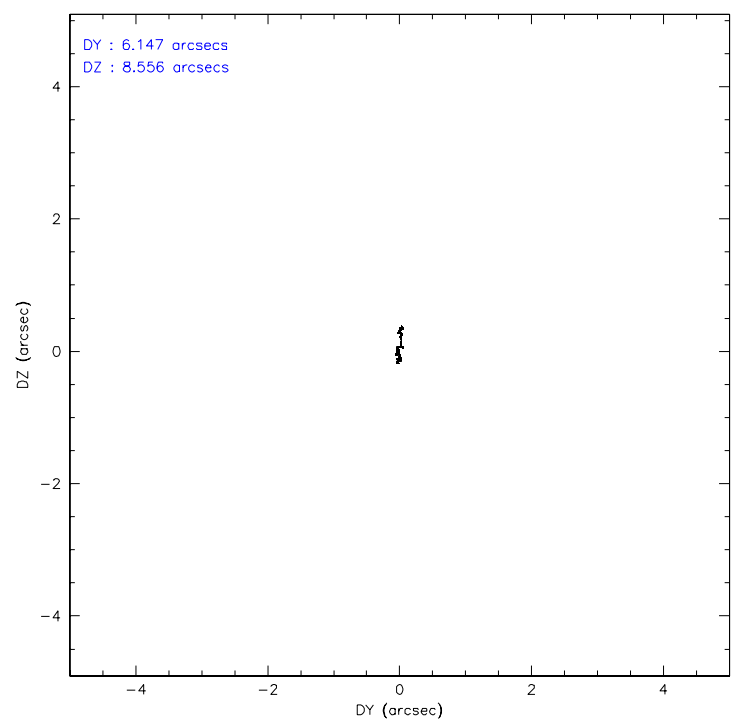
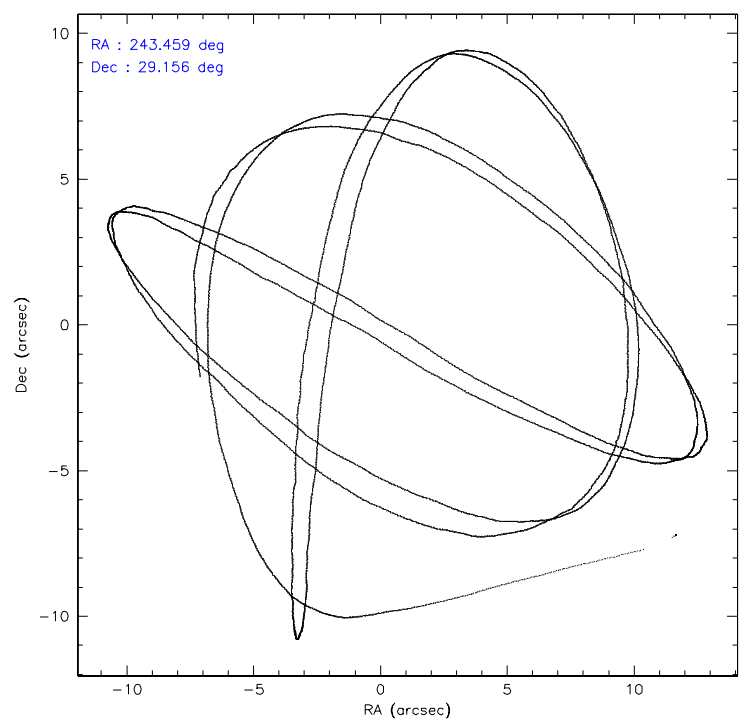
	<b>ccd 7</b>
level 1 events	41478
rejected events	28725
rejected %	69%

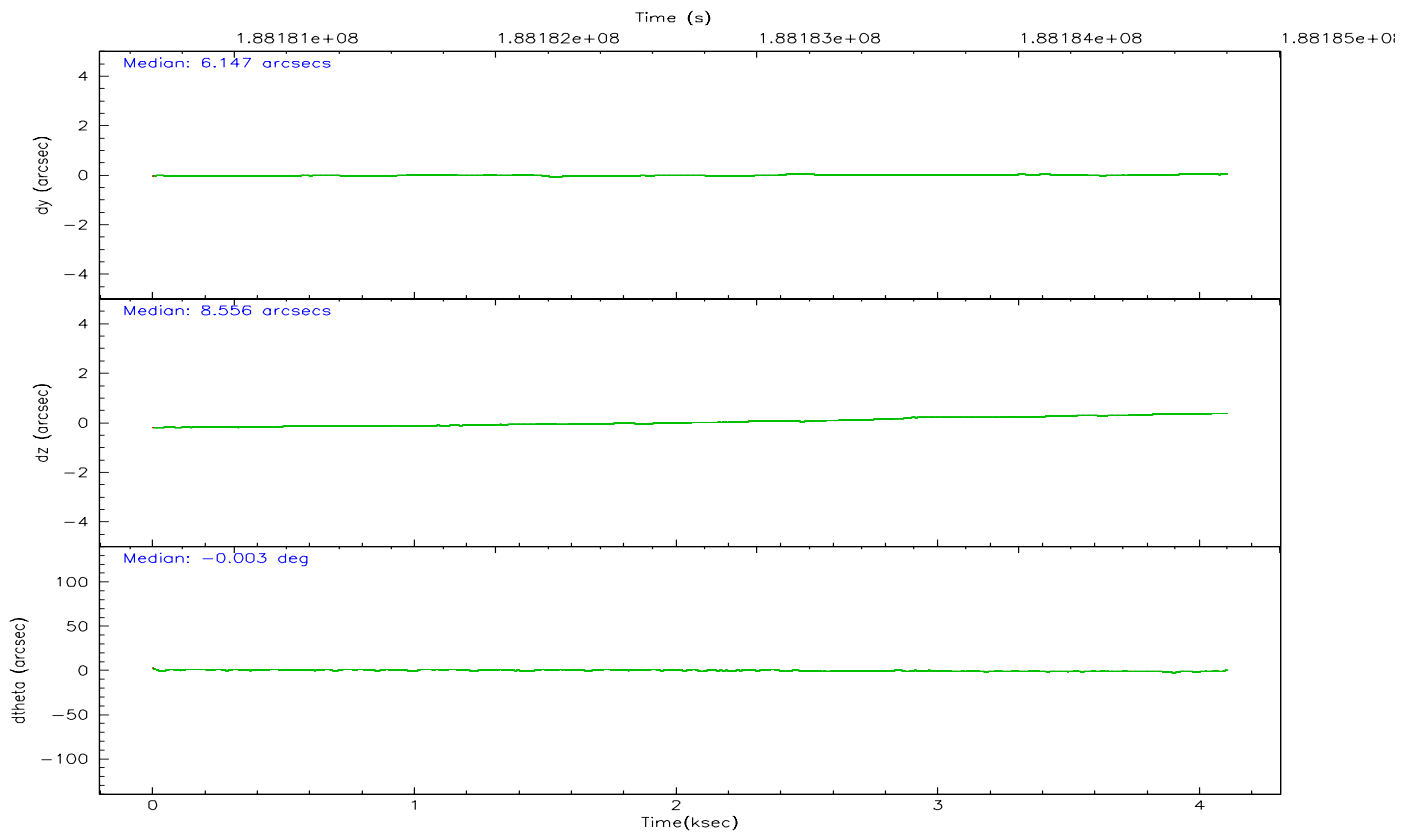
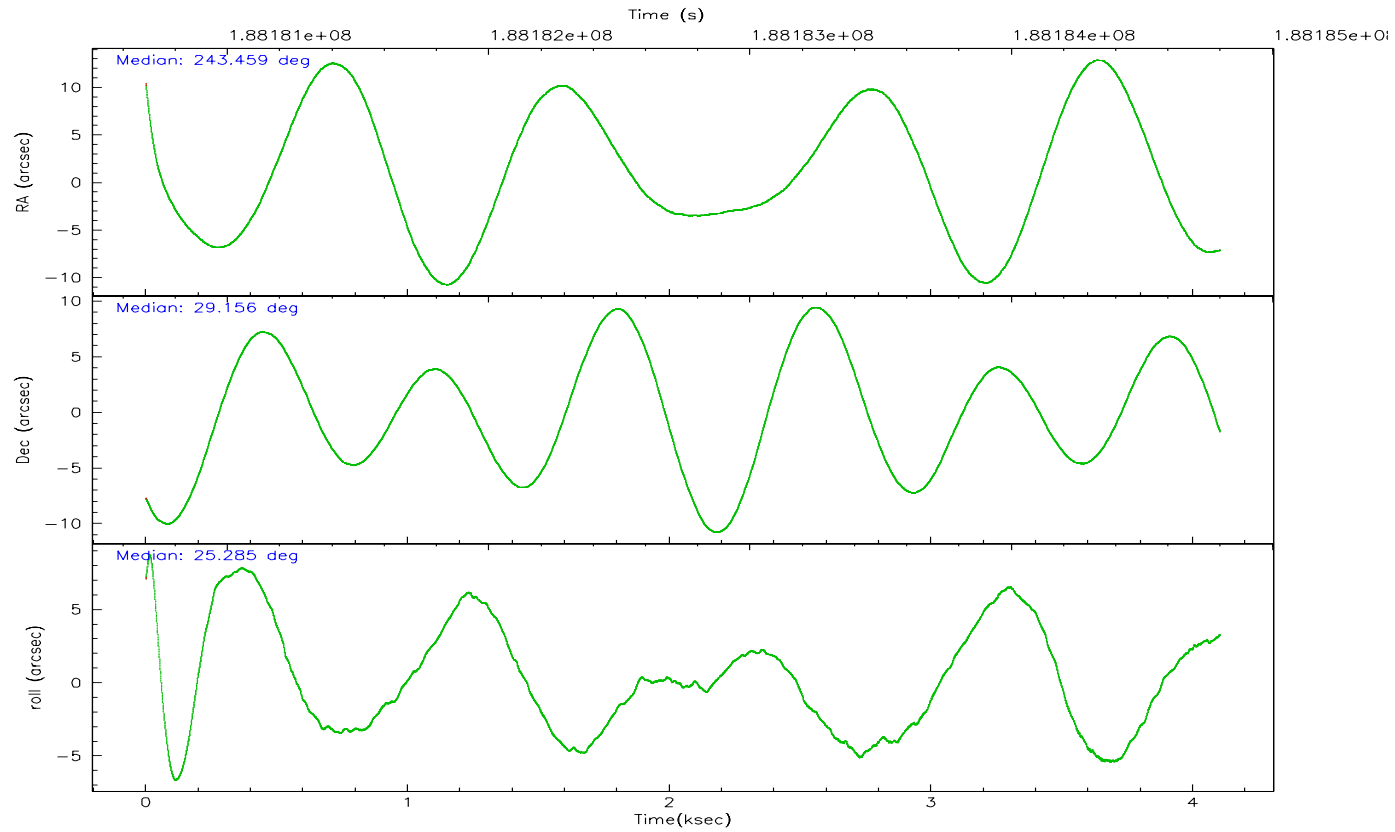
	<b>ccd 7</b>
grade 0 events	939
	2%
grade 1 events	21
	0%
grade 2 events	3892
	9%
grade 3 events	855
	2%
grade 4 events	846
	2%
grade 5 events	2782
	6%
grade 6 events	9267
	22%
grade 7 events	22876
	55%

## 2.2 Compared Parameters

Parameter	Planned	Actual	Parameter	Planned	Actual
Instrument	ACIS	ACIS	Obspar format version number	6	6
Detector	ACIS-7	ACIS-7	Obspar file type	PREDICTED	ACTUAL
Grating	NONE	NONE	Obspar update status	NONE	UPDATED
Data mode	FAINT	FAINT	On-chip summing requested	N	N
Observation mode	POINTING	POINTING	Subarray requested	NONE	NONE
Pointing RA	243.442452	243.4597986961653	Alternating exposures requested	N	N
Pointing Dec	29.133161	29.15576400755732	Primary exposure time	0.000000	3
Pointing Roll	25.140206	25.28844254339068			
SIM focus pos (mm)	-0.684267	-0.6828225247311905			
SIM defocus (mm)	0	0.001444936568705701			
SIM translation stage pos (mm)	-190.132523	-190.1400660498719			
SIM translation stage offset (mm)	0	0.00754346686406393			
Observation start time	188180838.184000	188179628.97413			
Observation start date	2003-12-19T00:26:14	2003-12-19T00:07:08			
Observation end time	188184794.184000	188186296.59942			
Observation end date	2003-12-19T01:32:10	2003-12-19T01:58:16			
Read mode	TIMED	TIMED			

## 2.3 Aspect





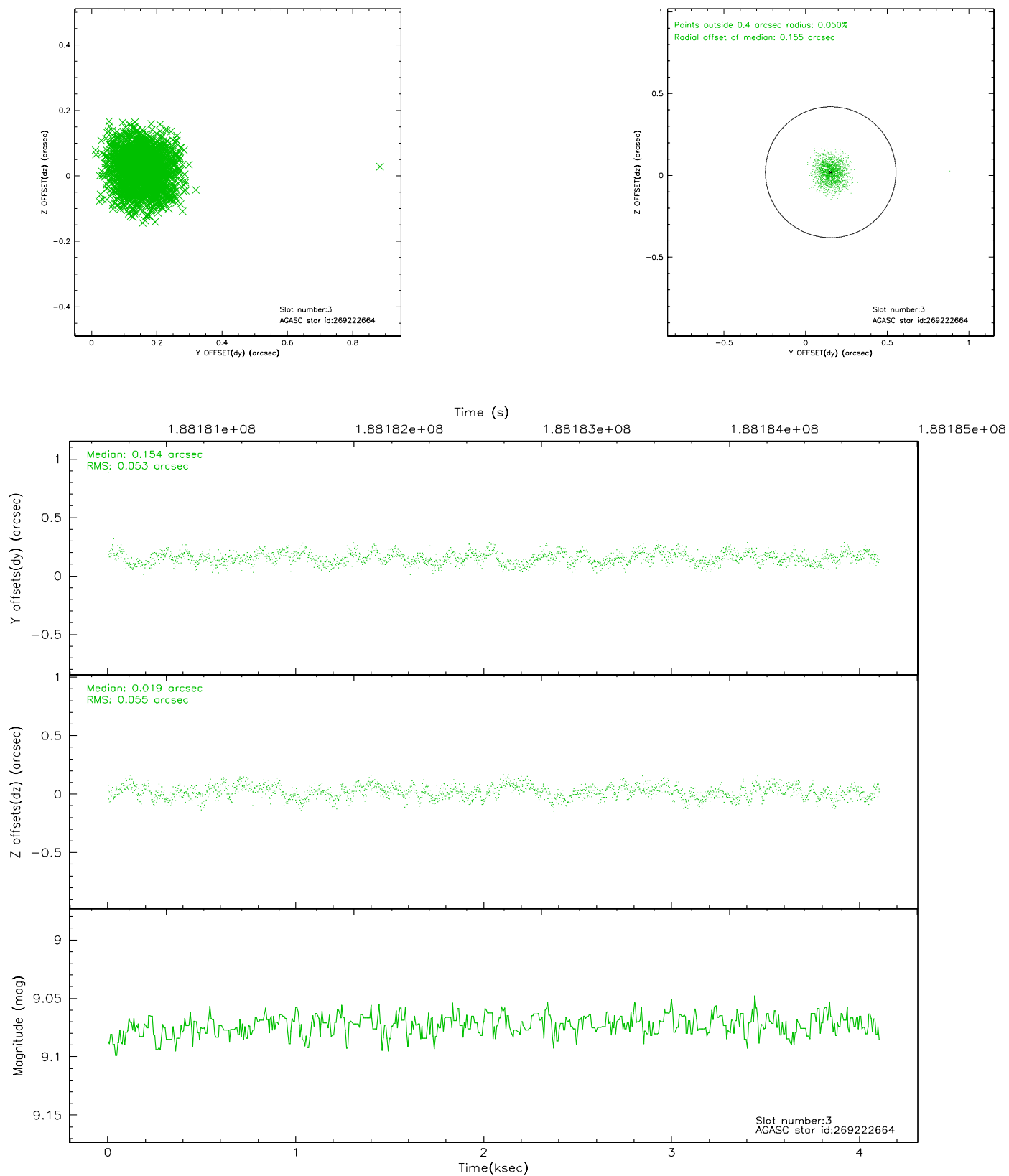
# Slot Statistics

slot	status	id	mag	n_pts	med_dy	med_dz	dr1	dr2	ra	dec	mean_y	mean_z
0	FID	ACIS-S-2	7.10	1002	-0.029	-0.021	0.007	0.011	0.000000	0.000000	-758.92	-1729.82
1	FID	ACIS-S-4	7.20	1002	0.032	0.020	0.005	0.009	0.000000	0.000000	2153.75	177.11
2	FID	ACIS-S-5	7.23	1001	-0.034	0.011	0.006	0.011	0.000000	0.000000	-1809.80	172.53
3	GUIDE	269222664	9.07	2003	0.154	0.019	0.080	0.126	243.194465	28.531507	-1629.06	-1627.06
4	GUIDE	269229312	9.02	2002	0.033	-0.278	0.096	0.146	243.759306	29.395270	1300.96	432.16
5	GUIDE	269229408	9.13	2003	0.010	0.125	0.080	0.131	244.113130	28.936543	1615.94	-1532.53
6	GUIDE	269230256	9.77	1999	-0.048	0.069	0.126	0.201	243.700399	28.707348	87.98	-1733.67
7	GUIDE	269229352	8.39	2002	-0.147	0.066	0.064	0.102	244.216758	29.172148	2266.98	-900.44

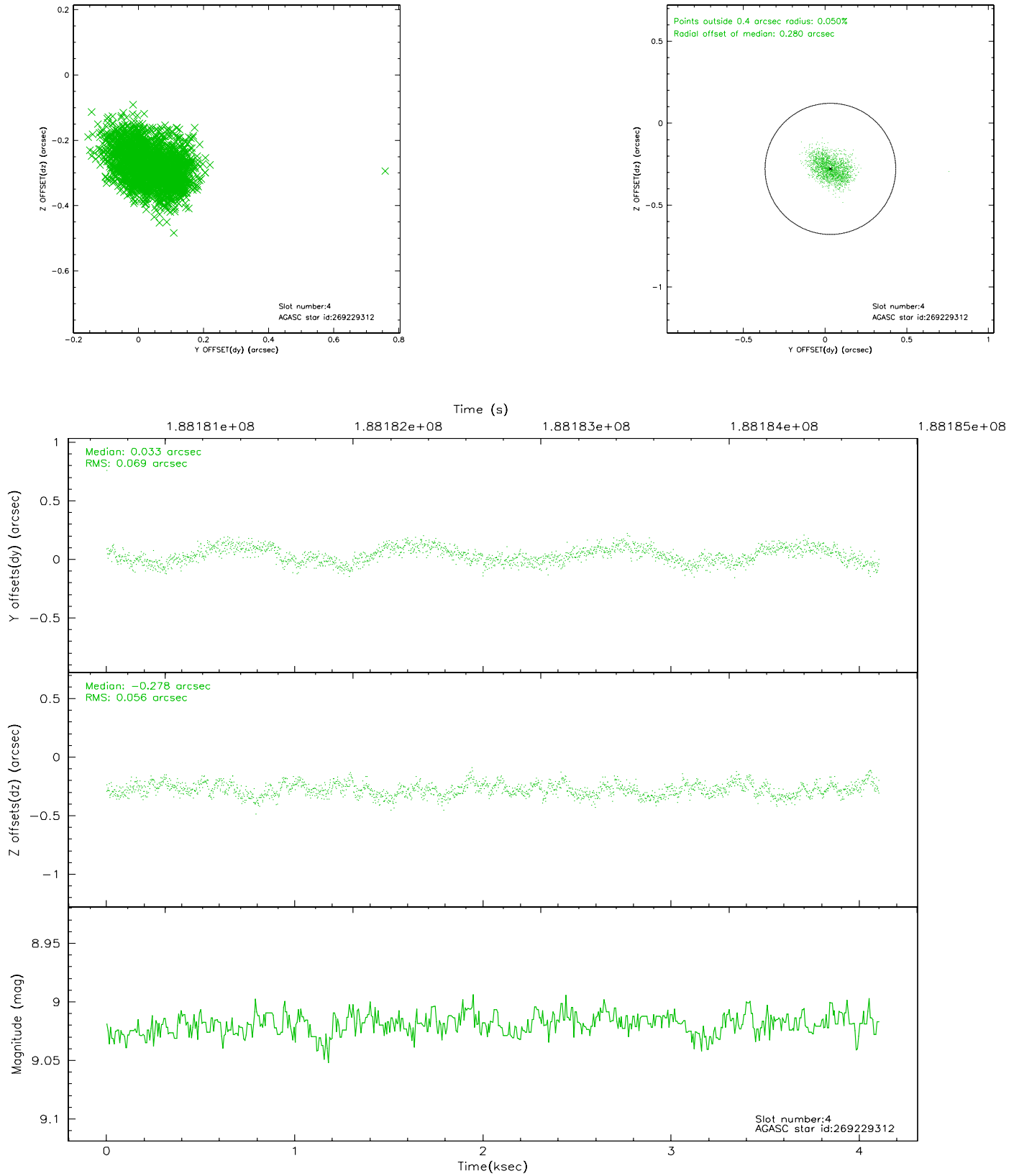


## 2.4 Star Slots

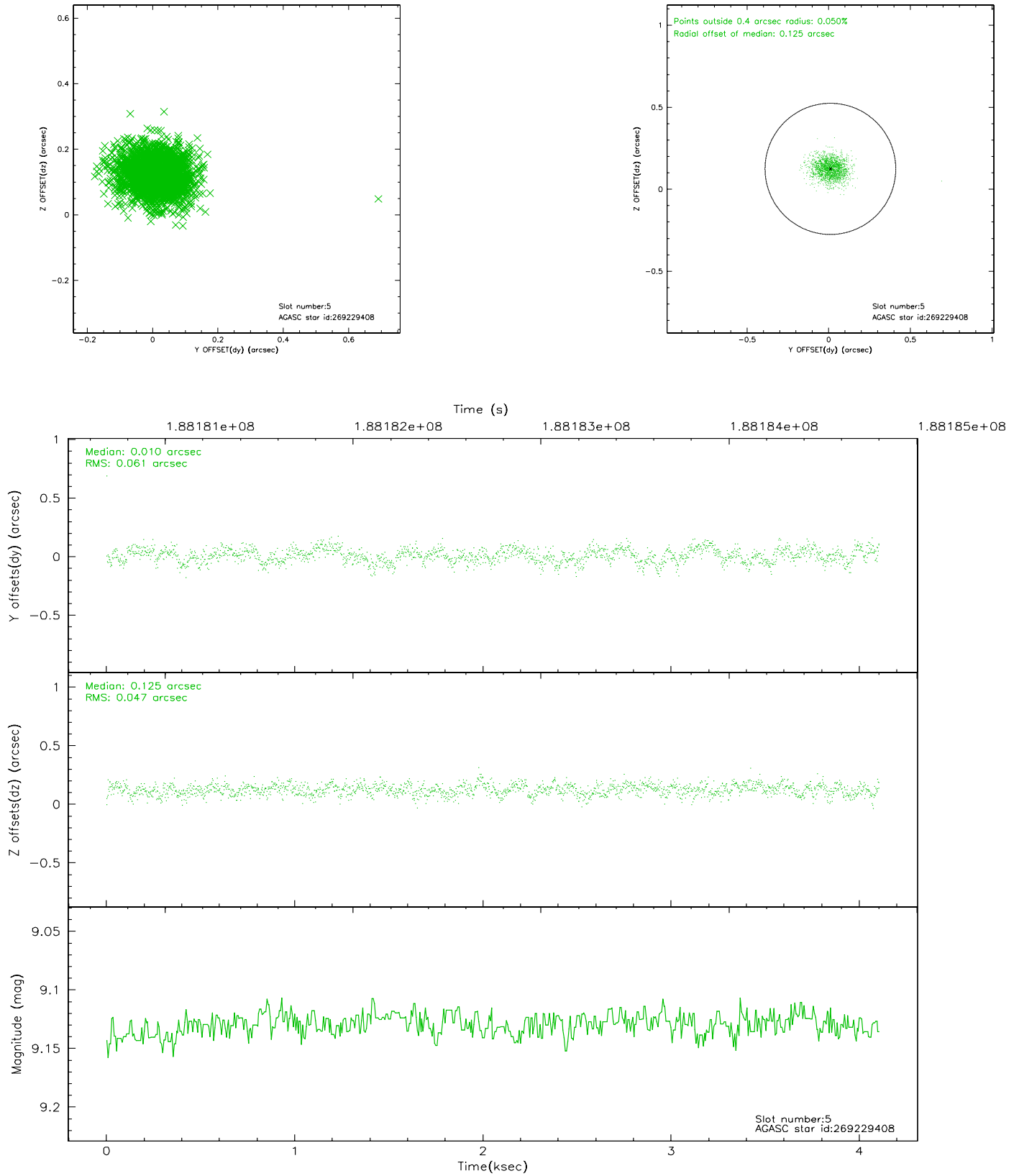
### 2.4.1 Slot 3



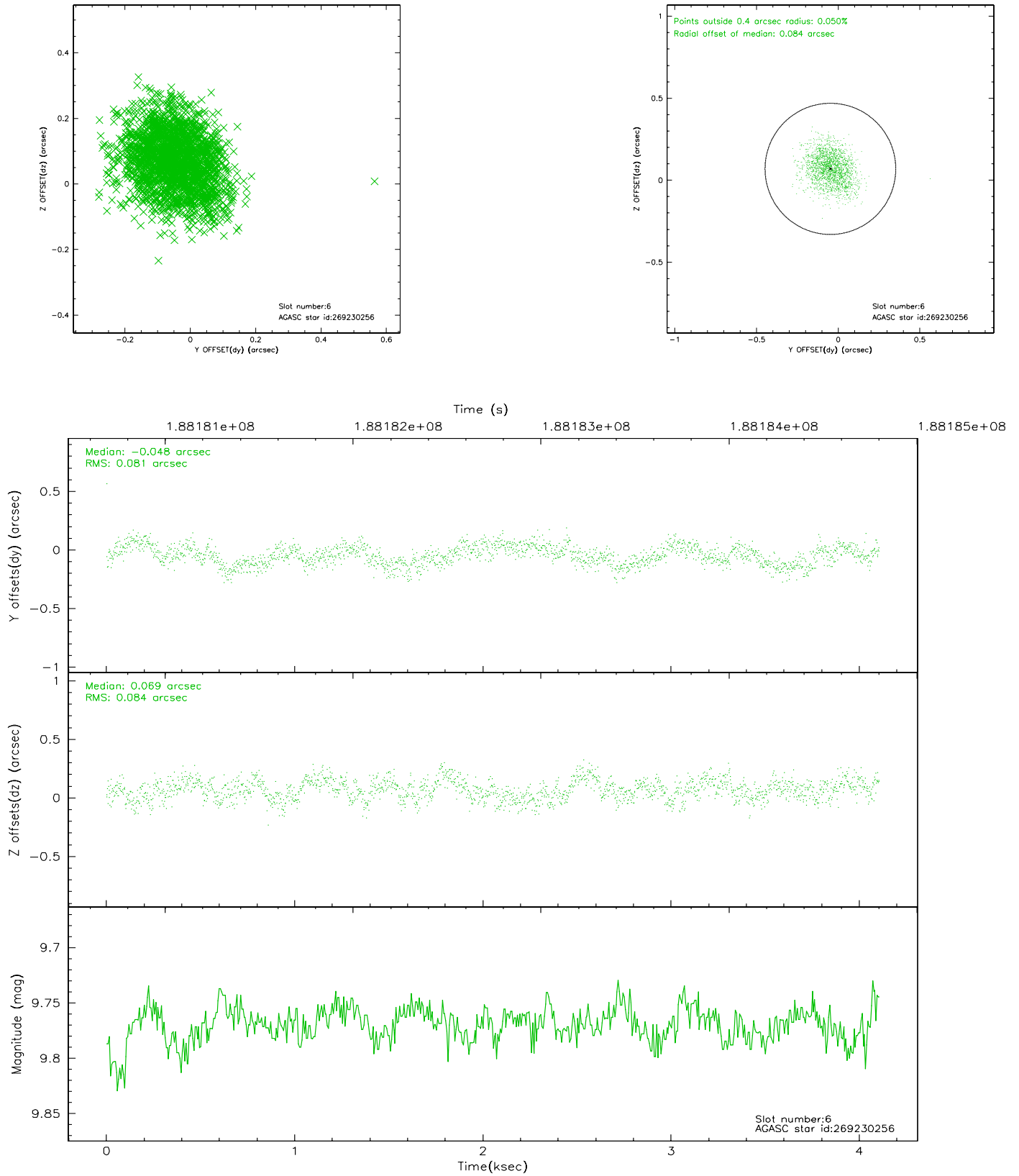
## 2.4.2 Slot 4



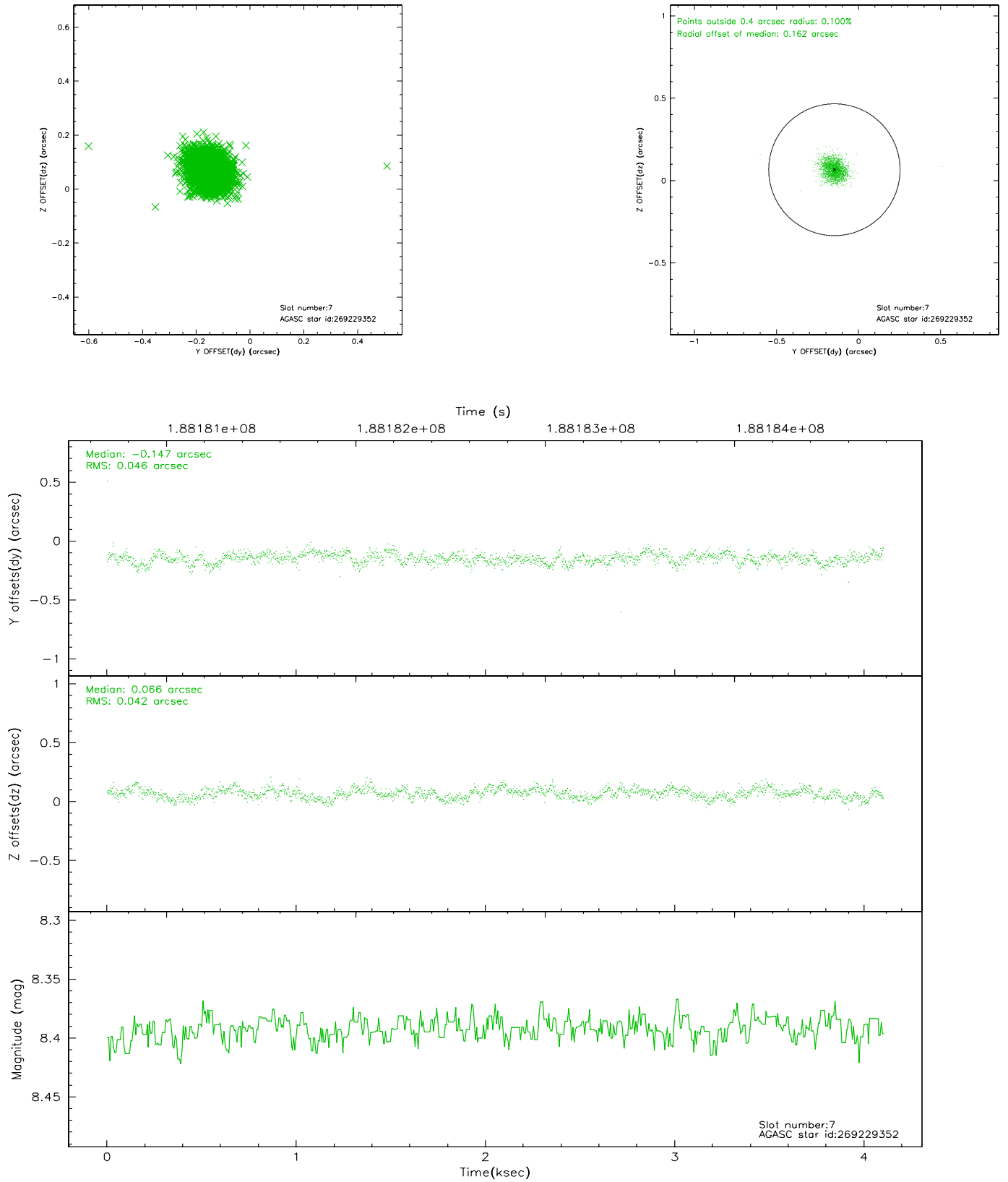
### 2.4.3 Slot 5



## 2.4.4 Slot 6

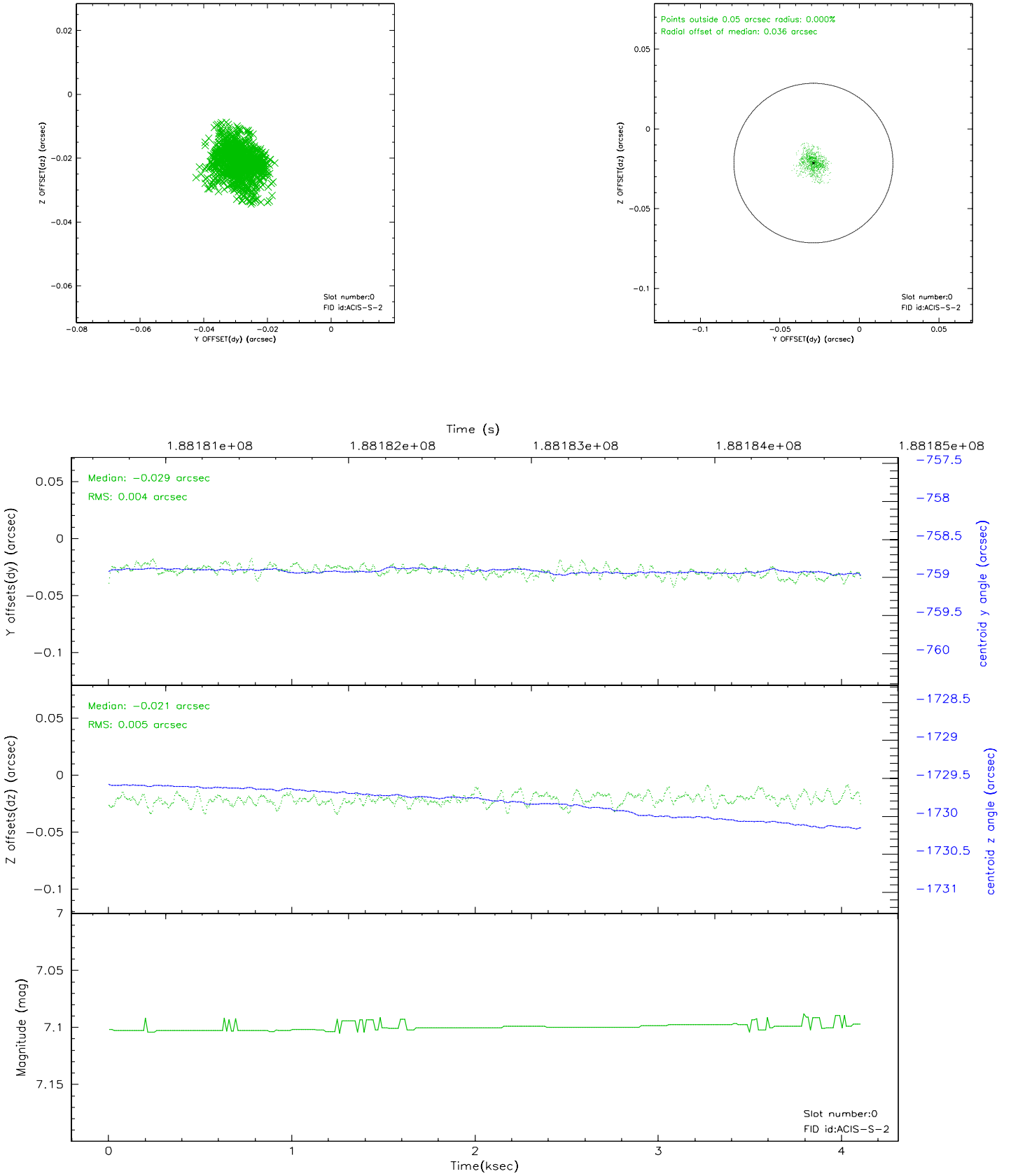


## 2.4.5 Slot 7

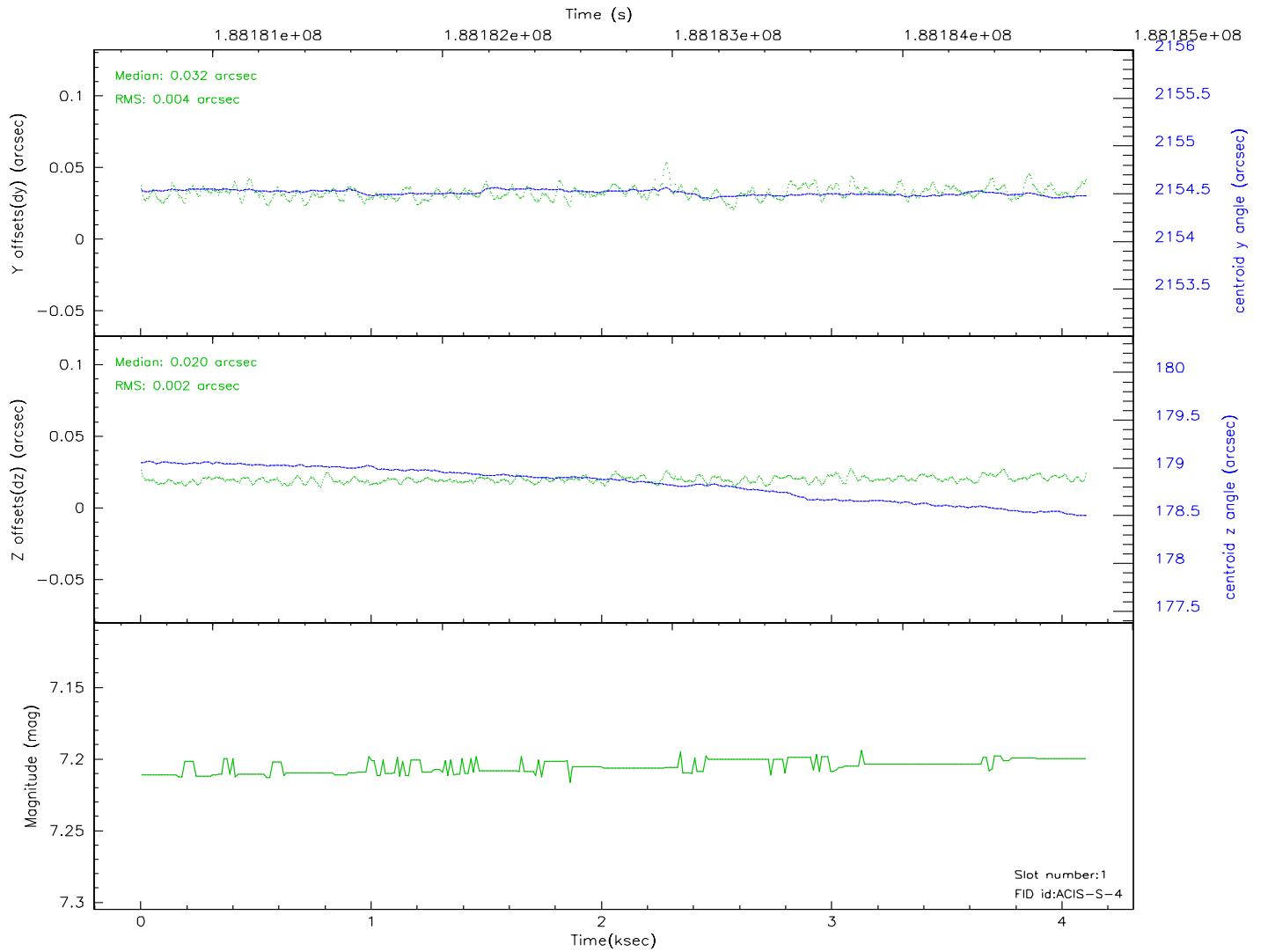
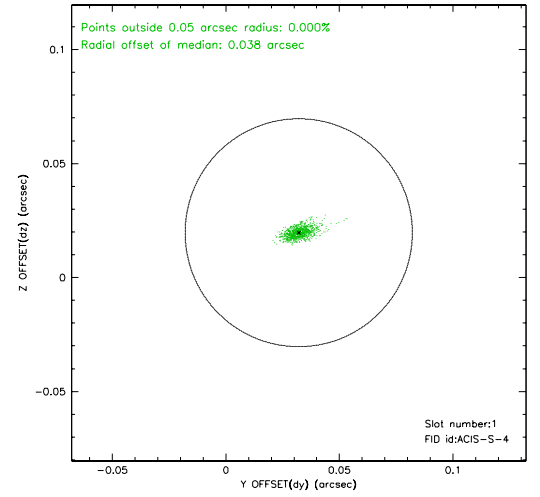
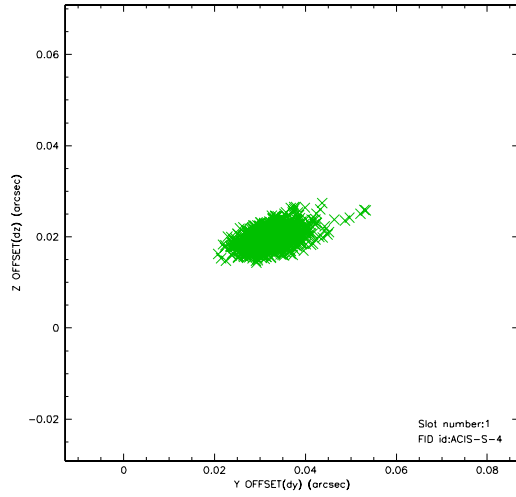


## 2.5 FID Slots

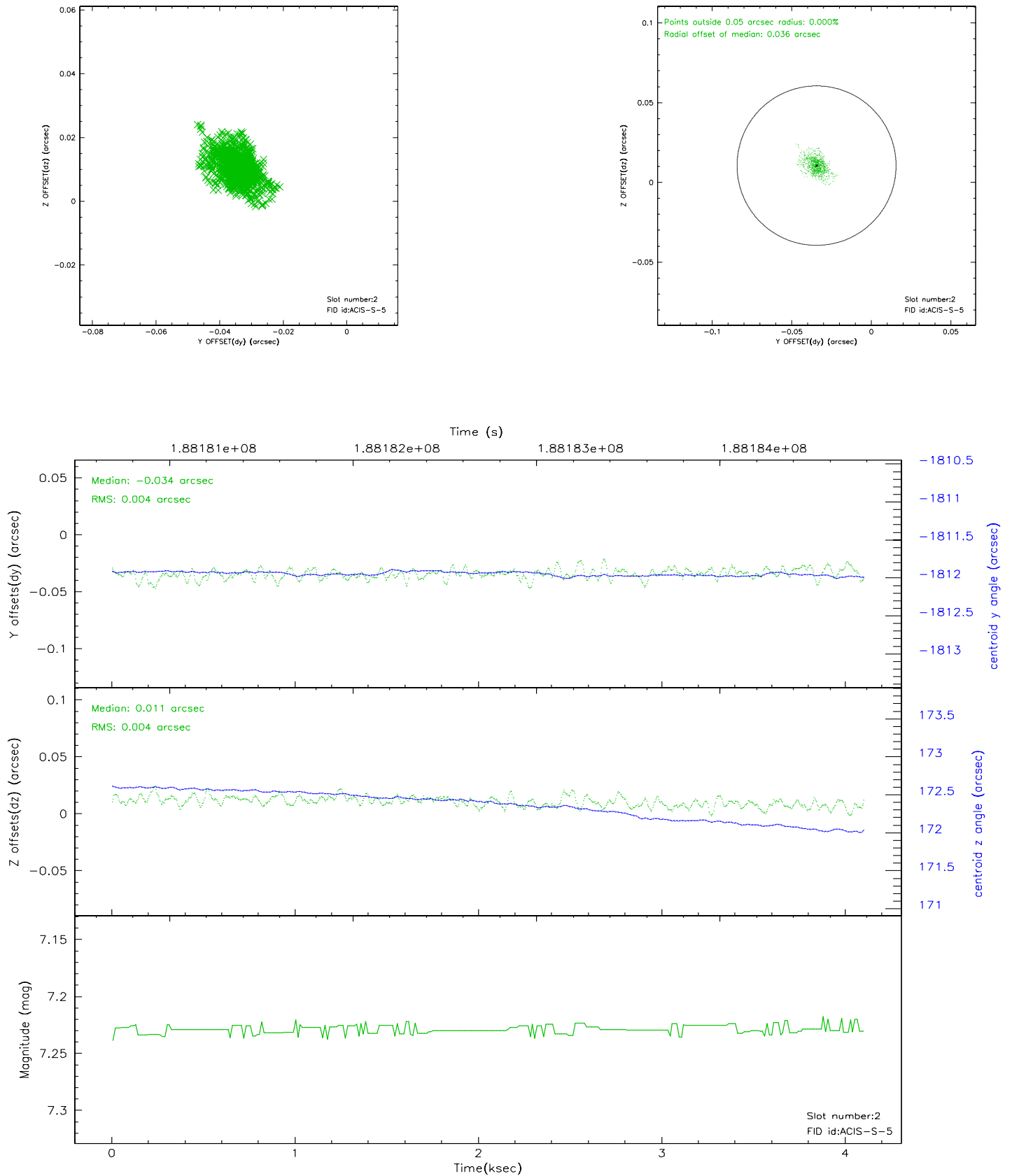
### 2.5.1 Slot 0



## 2.5.2 Slot 1



### 2.5.3 Slot 2





### 3 Point Sources

## A Summary

### A.1 Status

V&V Scientist	Jen Lauer
V&V Date (YYYY-MM-DD)	2006.06.22
V&V Edition	1
V&V Disposition and Status	OK
V&V Charge Time	4.098

### A.2 Comments