

V&V Reference Report

L2 ASCDS Version : 7.6.7.2

Observation 5339 - L2 Version 001
Chandra X-Ray Center

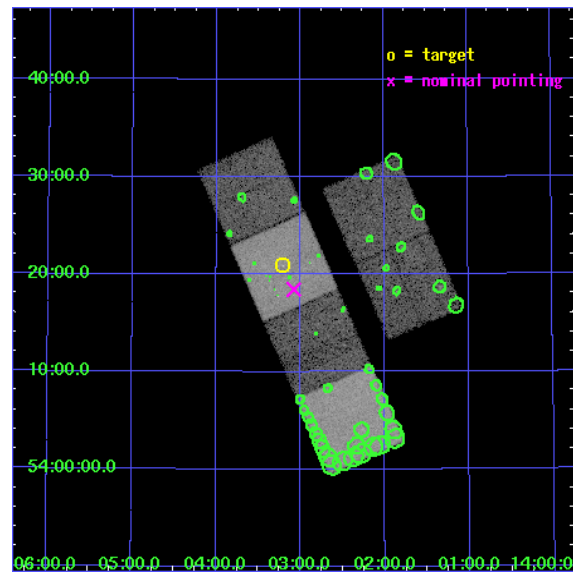
L2 Processing Date : Apr 29 2006

Contents

1	Front	2
2	OBI	3
2.1	OBI	3
2.1.1	Images	3
2.1.2	Bias	3
2.1.3	Parameters	4
2.1.4	Events	4
2.2	Compared Parameters	5
2.3	Aspect	6
2.4	Star Slots	9
2.4.1	Slot 3	9
2.4.2	Slot 4	10
2.4.3	Slot 5	11
2.4.4	Slot 6	12
2.4.5	Slot 7	13
2.5	FID Slots	14
2.5.1	Slot 0	14
2.5.2	Slot 1	15
2.5.3	Slot 2	16
3	Point Sources	17
A	Summary	18
A.1	Status	18
A.2	Comments	18

1 Front

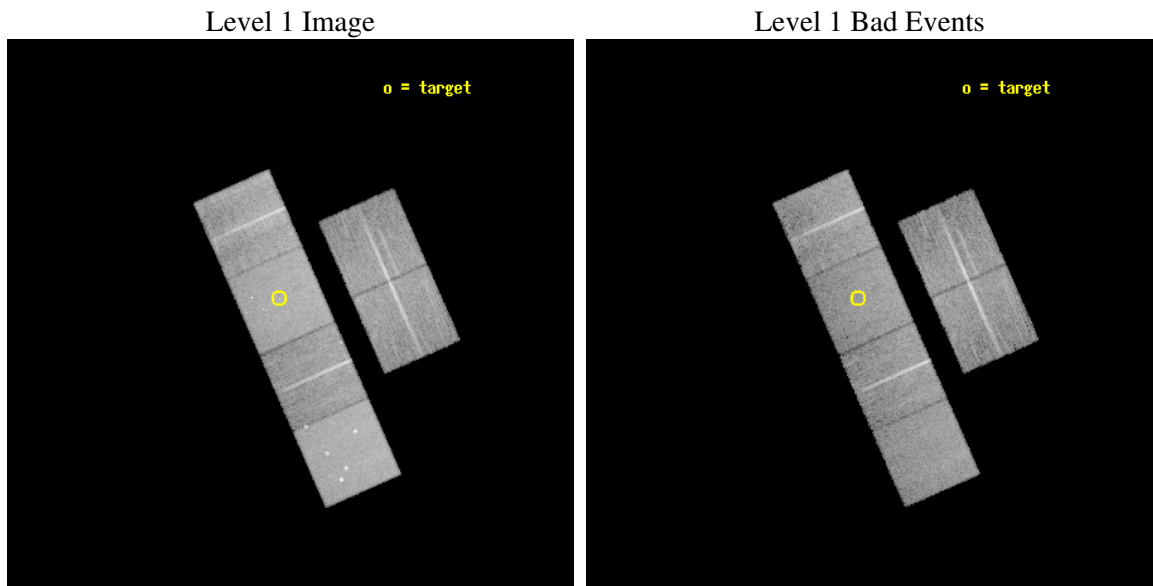
seq_num	600389
obs_id	5339
title	An Ultra-Deep Study of M101
observer	Dr. K. Kuntz
object	M101
dtcycle	0
cycle	P
ra_targ	210.80375
dec_targ	54.348778
ra_nom	210.76922890215
dec_nom	54.307692068407
roll_nom	246.18468109534
revision	2
ontime	14505.599945962
livetime	14321.921305223
ontime2	14502.358985662
ontime3	14505.599945962
ontime5	14505.599945962
ontime6	14505.599945962
ontime7	14505.599945962
ontime8	14505.599945962
l2events	189169



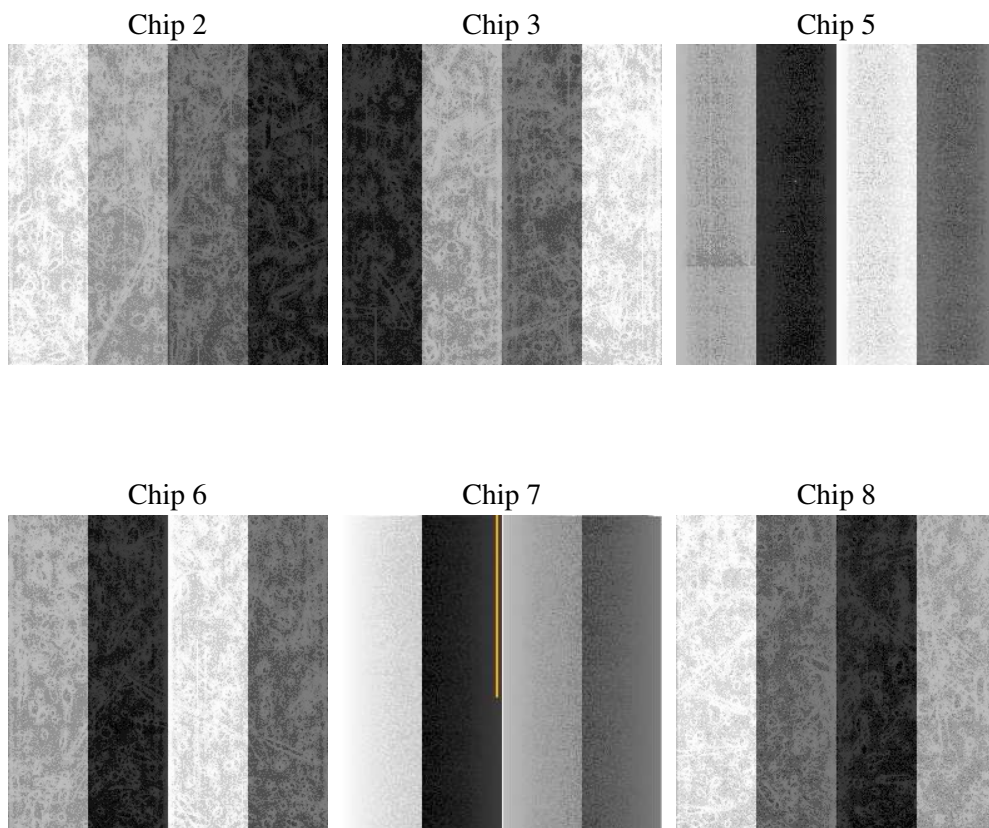
2 OBI

2.1 OBI

2.1.1 Images



2.1.2 Bias



2.1.3 Parameters

obi_num	0
ascdsver	7.6.7.2
caldbver	3.2.1
date	2006-04-29T10:20:33
revision	2

sched_exp_time	14335.706000
ontime	14522.937764138
ontime2	14519.696773946
ontime3	14522.937734246
ontime5	14522.937764138
ontime6	14522.937734246
ontime7	14522.937764138
ontime8	14522.937764138
l1events	801519

2.1.4 Events

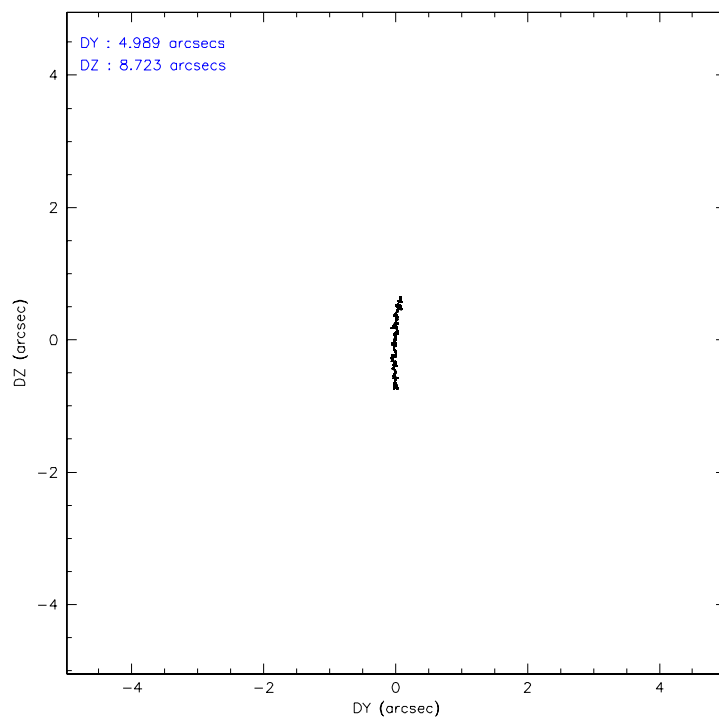
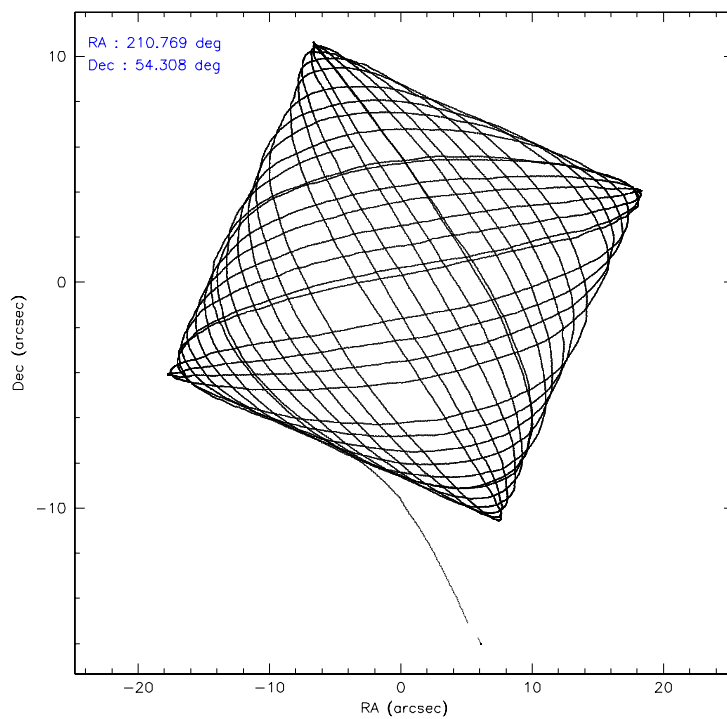
	ccd 2	ccd 3	ccd 5	ccd 6	ccd 7	ccd 8
level 1 events	115073	109874	168607	113168	155522	139275
rejected events	99289	94766	91772	97073	92783	107964
rejected %	86%	86%	54%	85%	59%	77%

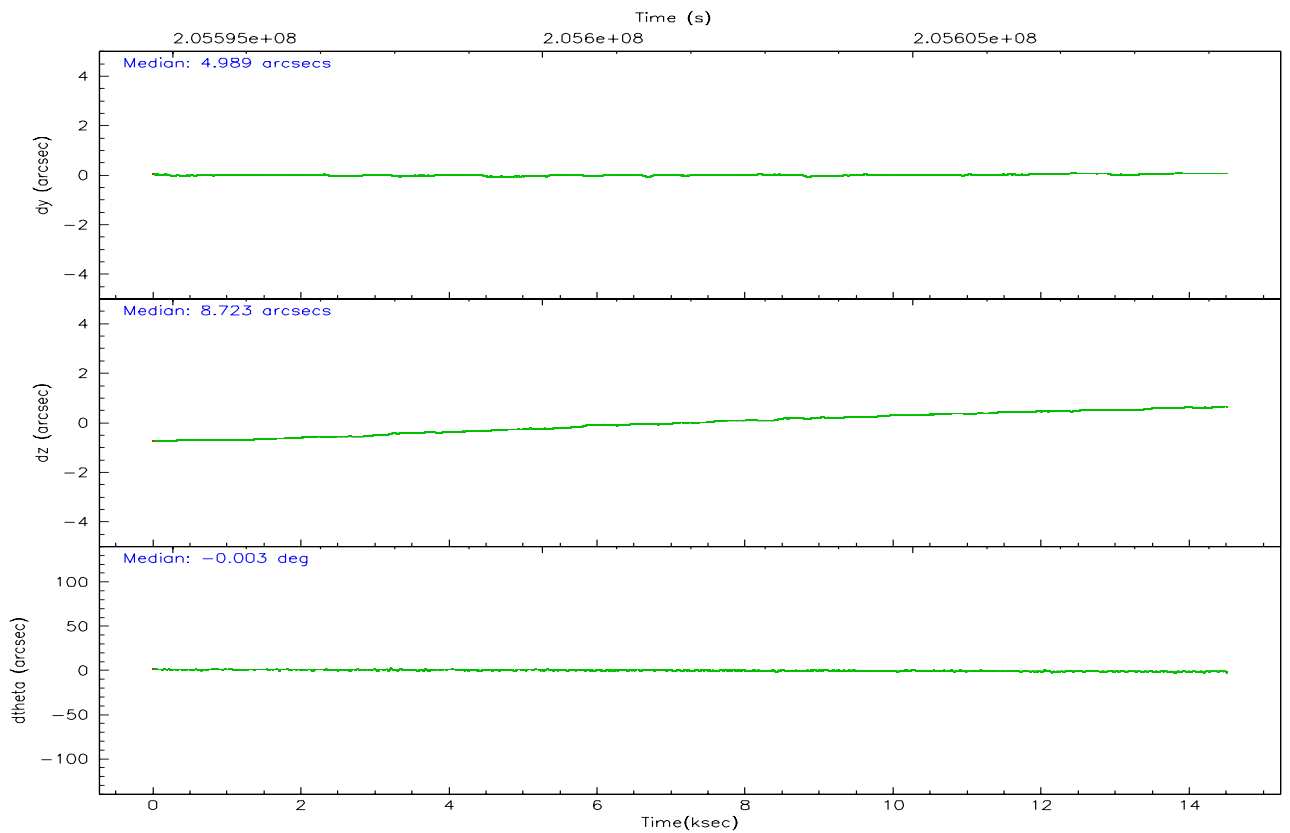
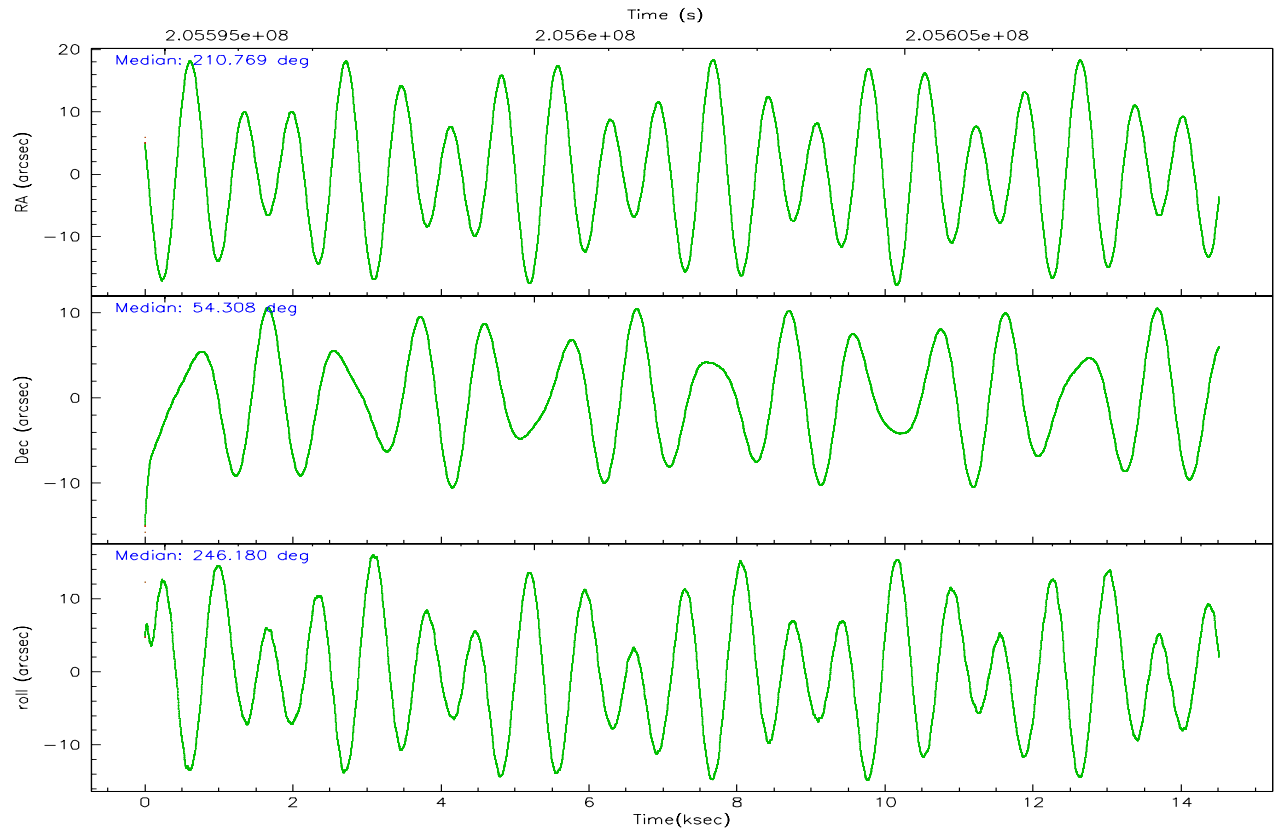
	ccd 2	ccd 3	ccd 5	ccd 6	ccd 7	ccd 8
grade 0 events	7931	7490	7392	7678	4661	11389
	6%	6%	4%	6%	2%	8%
grade 1 events	84	76	194	68	74	109
	0%	0%	0%	0%	0%	0%
grade 2 events	2980	2681	23363	3046	15380	6489
	2%	2%	13%	2%	9%	4%
grade 3 events	1323	1273	1663	1319	3147	3068
	1%	1%	0%	1%	2%	2%
grade 4 events	1315	1300	1599	1340	3050	2995
	1%	1%	0%	1%	1%	2%
grade 5 events	4347	4830	7920	5137	9690	6445
	3%	4%	4%	4%	6%	4%
grade 6 events	2253	2381	42914	2736	36575	7384
	1%	2%	25%	2%	23%	5%
grade 7 events	94840	89843	83562	91844	82945	101396
	82%	81%	49%	81%	53%	72%

2.2 Compared Parameters

Parameter	Planned	Actual	Parameter	Planned	Actual
Instrument	ACIS	ACIS	Obspar format version number	6	6
Detector	ACIS-235678	ACIS-235678	Obspar file type	PREDICTED	ACTUAL
Grating	NONE	NONE	Obspar update status	NONE	UPDATED
Data mode	VFAINT	VFAINT	On-chip summing requested	N	N
Observation mode	POINTING	POINTING	Subarray requested	NONE	NONE
Pointing RA	210.763621	210.7692289021481	Alternating exposures requested	N	N
Pointing Dec	54.334730	54.30769206840741	Primary exposure time	0.000000	3.2
Pointing Roll	246.032598	246.1846810953394			
SIM focus pos (mm)	-0.684267	-0.6828225247311905			
SIM defocus (mm)	0	0.001444936568705701			
SIM translation stage pos (mm)	-190.132523	-190.1425803651734			
SIM translation stage offset (mm)	0	0.01005778216563158			
Observation start time	205594914.184000	205593841.61406			
Observation start date	2004-07-07T13:40:50	2004-07-07T13:24:01			
Observation end time	205609250.184000	205609477.98976			
Observation end date	2004-07-07T17:39:46	2004-07-07T17:44:37			
Read mode	TIMED	TIMED			

2.3 Aspect



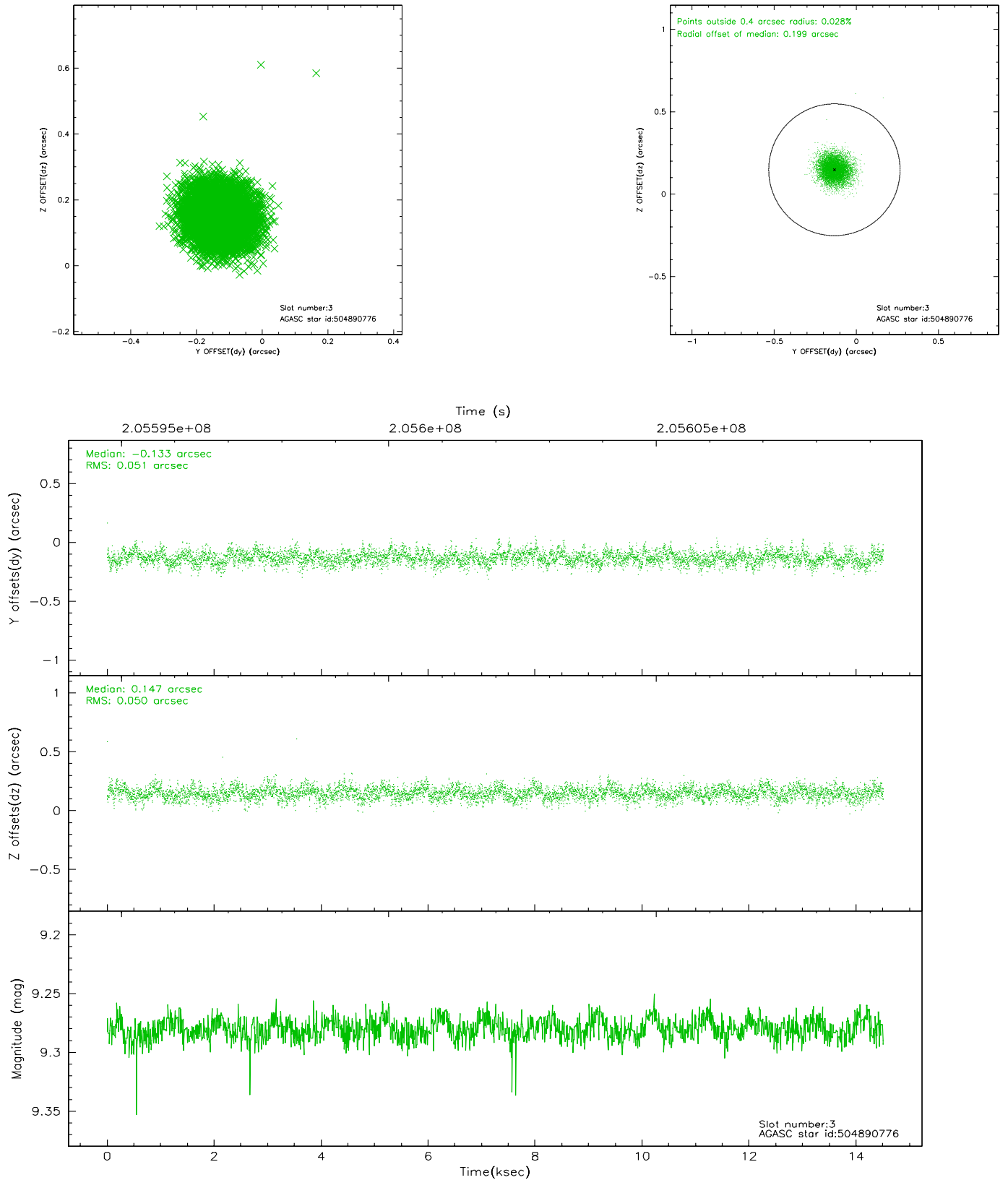


Slot Statistics

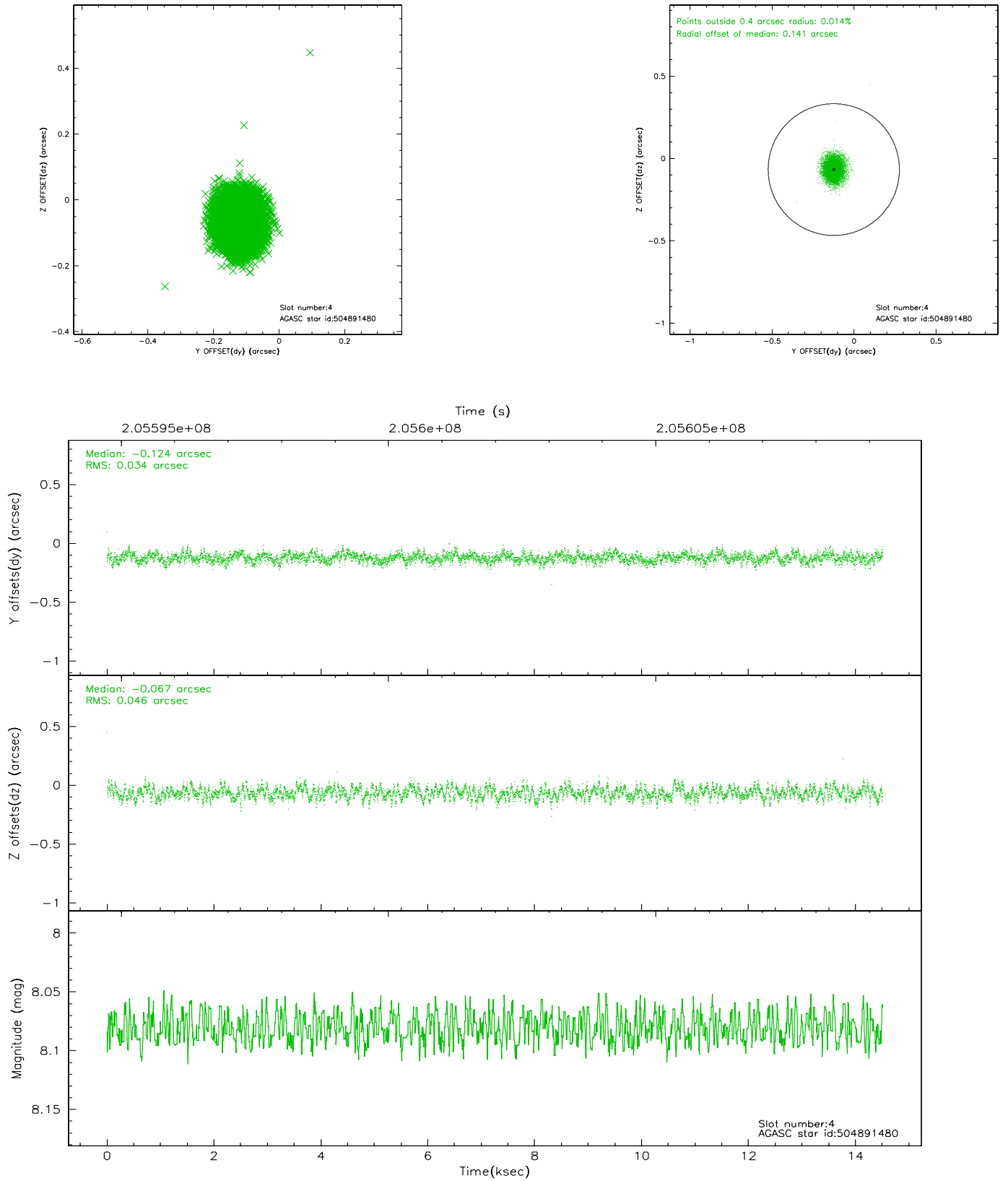
slot	status	id	mag	n_pts	med_dy	med_dz	dr1	dr2	ra	dec	mean_y	mean_z
0	FID	ACIS-S-2	7.10	3539	-0.068	-0.036	0.009	0.016	0.000000	0.000000	-757.78	-1729.88
1	FID	ACIS-S-4	7.20	3540	0.036	0.049	0.007	0.013	0.000000	0.000000	2155.48	178.32
2	FID	ACIS-S-6	7.35	3540	0.004	-0.006	0.007	0.012	0.000000	0.000000	404.72	816.05
3	GUIDE	504890776	9.28	7075	-0.133	0.147	0.075	0.124	211.095934	54.816966	-1867.70	-75.74
4	GUIDE	504891480	8.08	7079	-0.124	-0.067	0.061	0.097	210.708012	54.666096	-1043.12	-590.31
5	GUIDE	504893088	9.21	7073	0.055	-0.060	0.078	0.127	210.351715	54.364955	249.53	-834.54
6	GUIDE	504894856	8.98	7076	0.120	-0.101	0.077	0.123	209.819510	54.132689	1461.98	-1529.44
7	GUIDE	504890480	8.18	7077	0.081	0.080	0.068	0.106	210.132463	53.768436	2404.13	-401.39

2.4 Star Slots

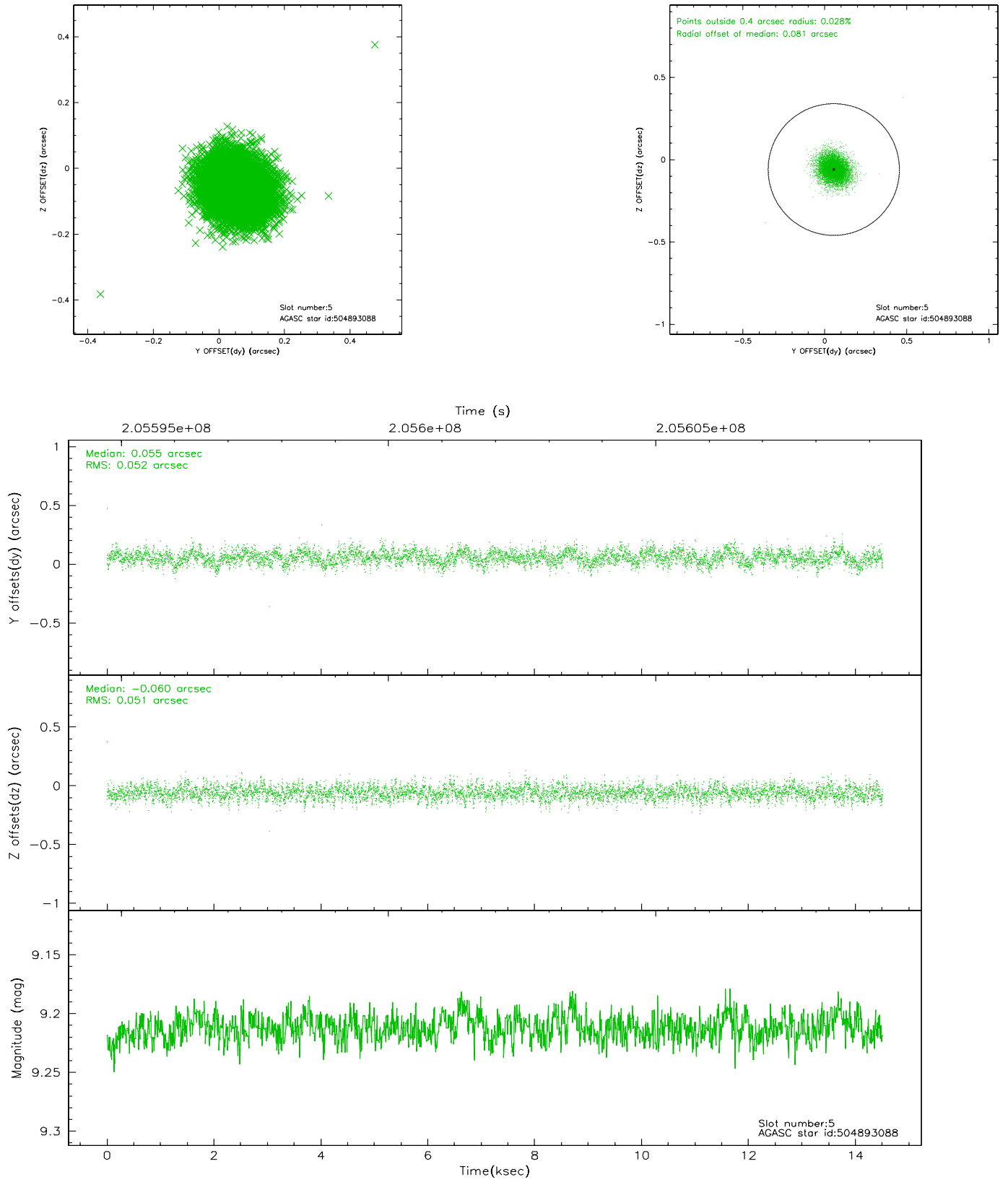
2.4.1 Slot 3



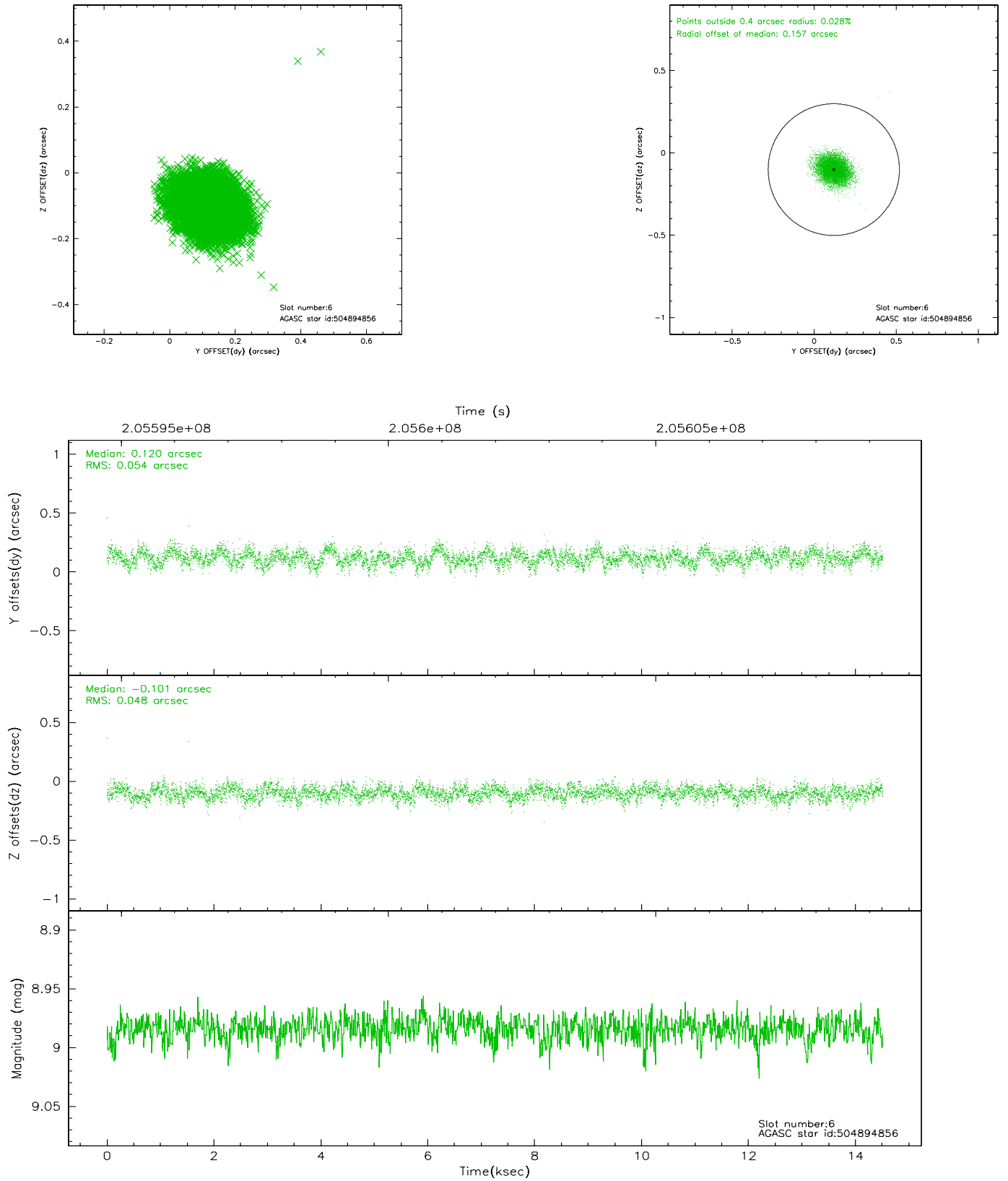
2.4.2 Slot 4



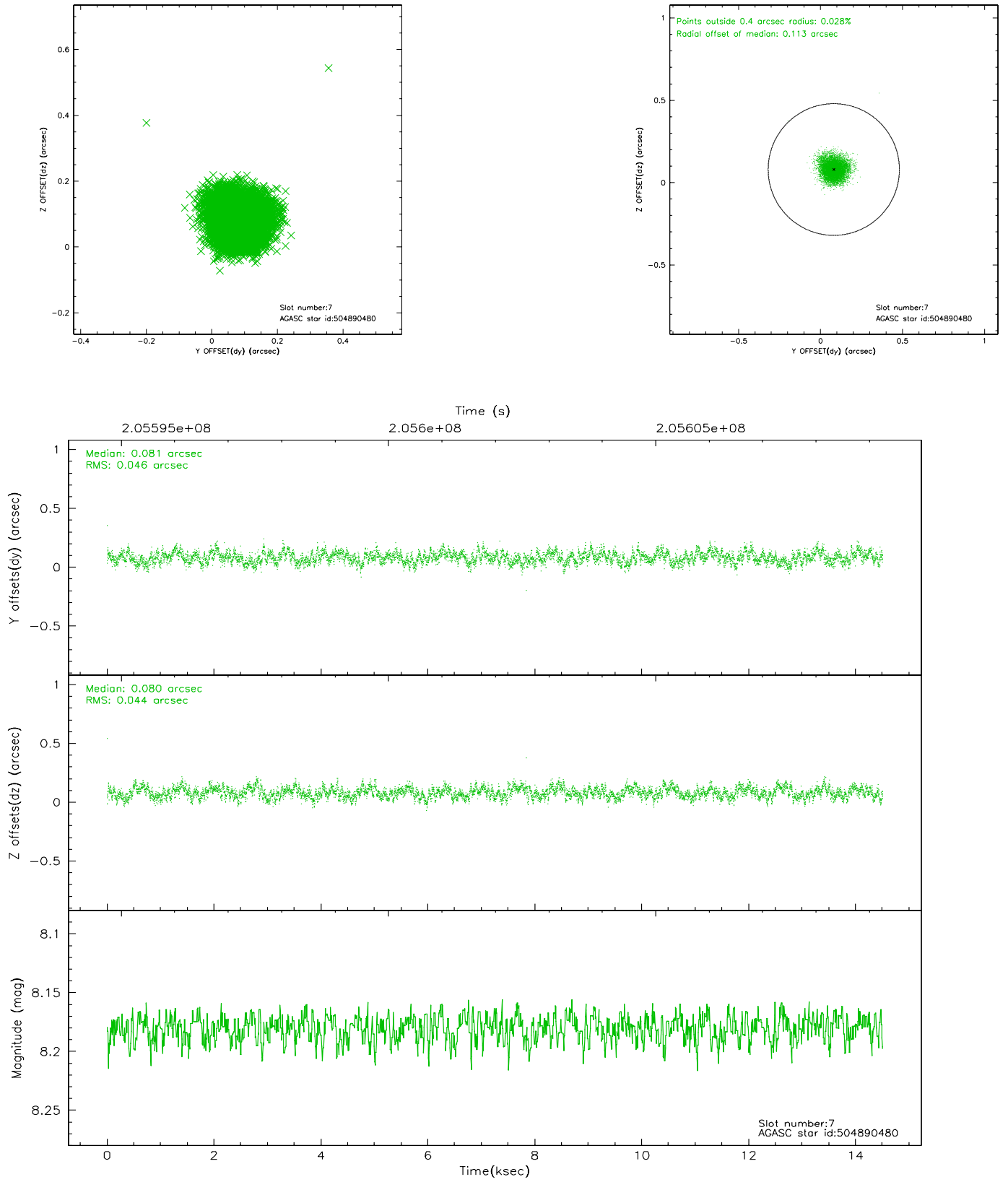
2.4.3 Slot 5



2.4.4 Slot 6

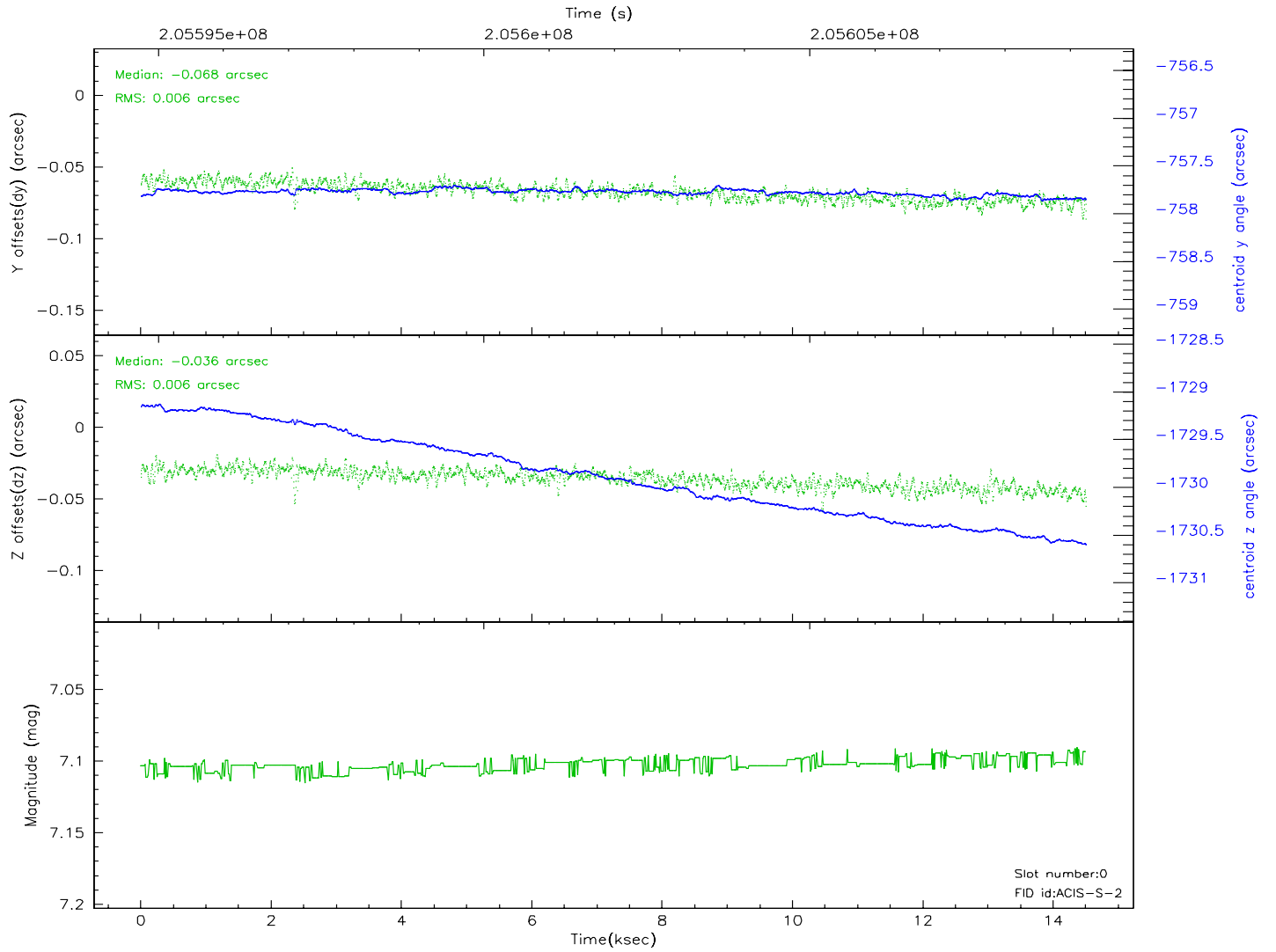
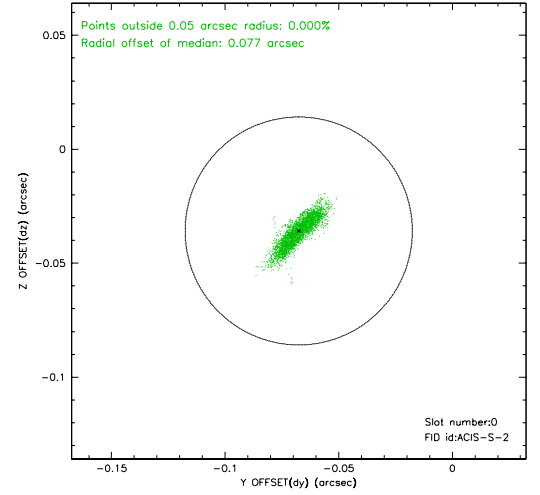
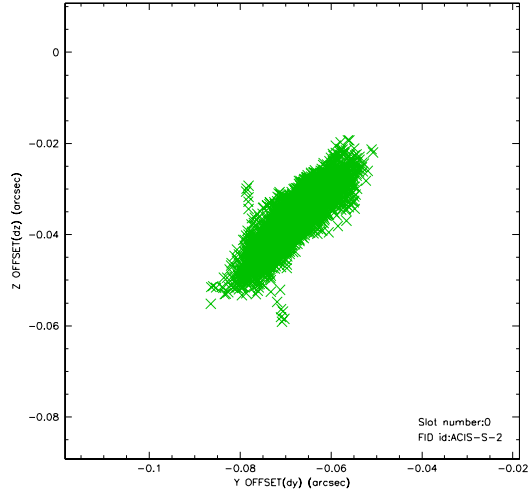


2.4.5 Slot 7

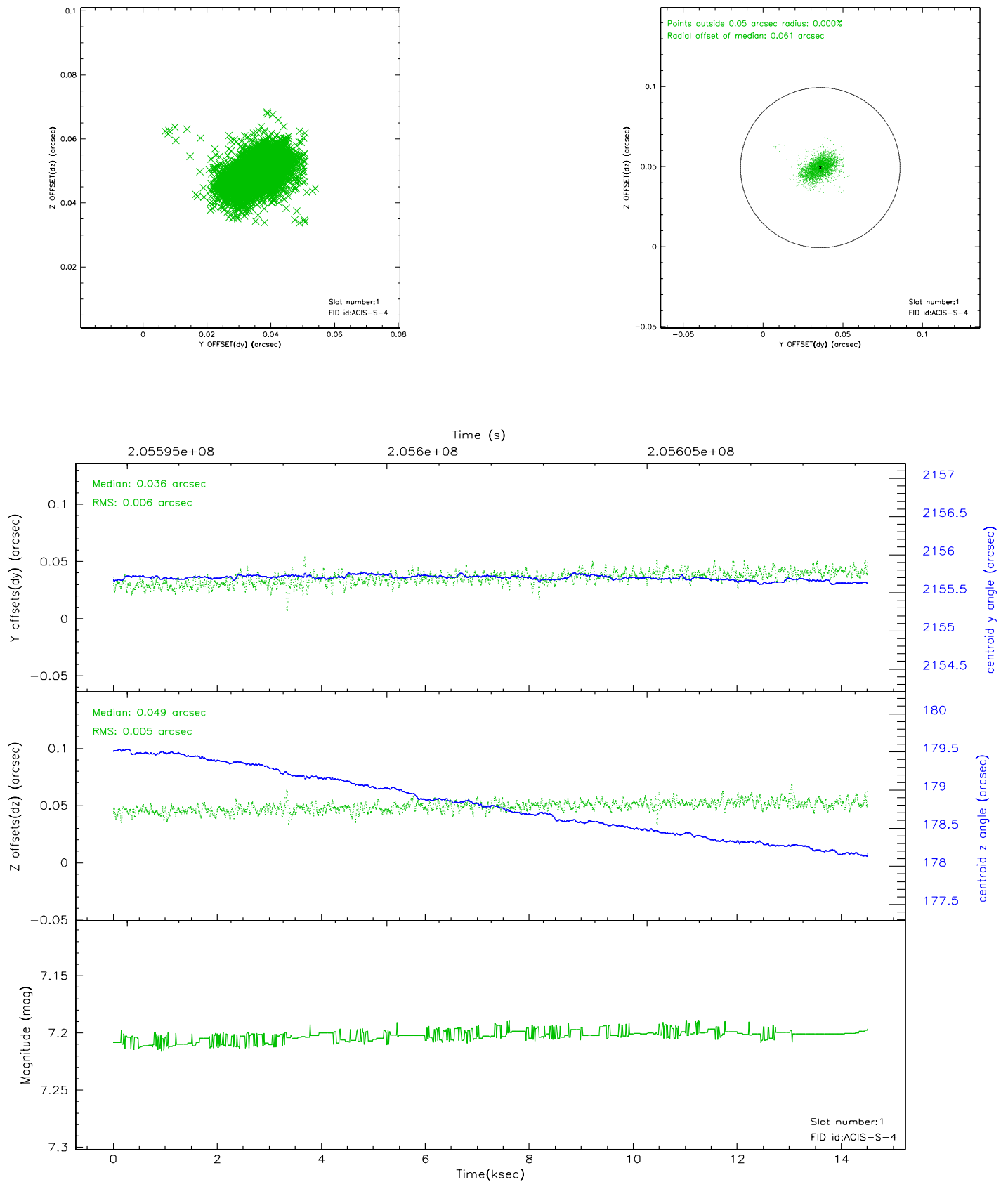


2.5 FID Slots

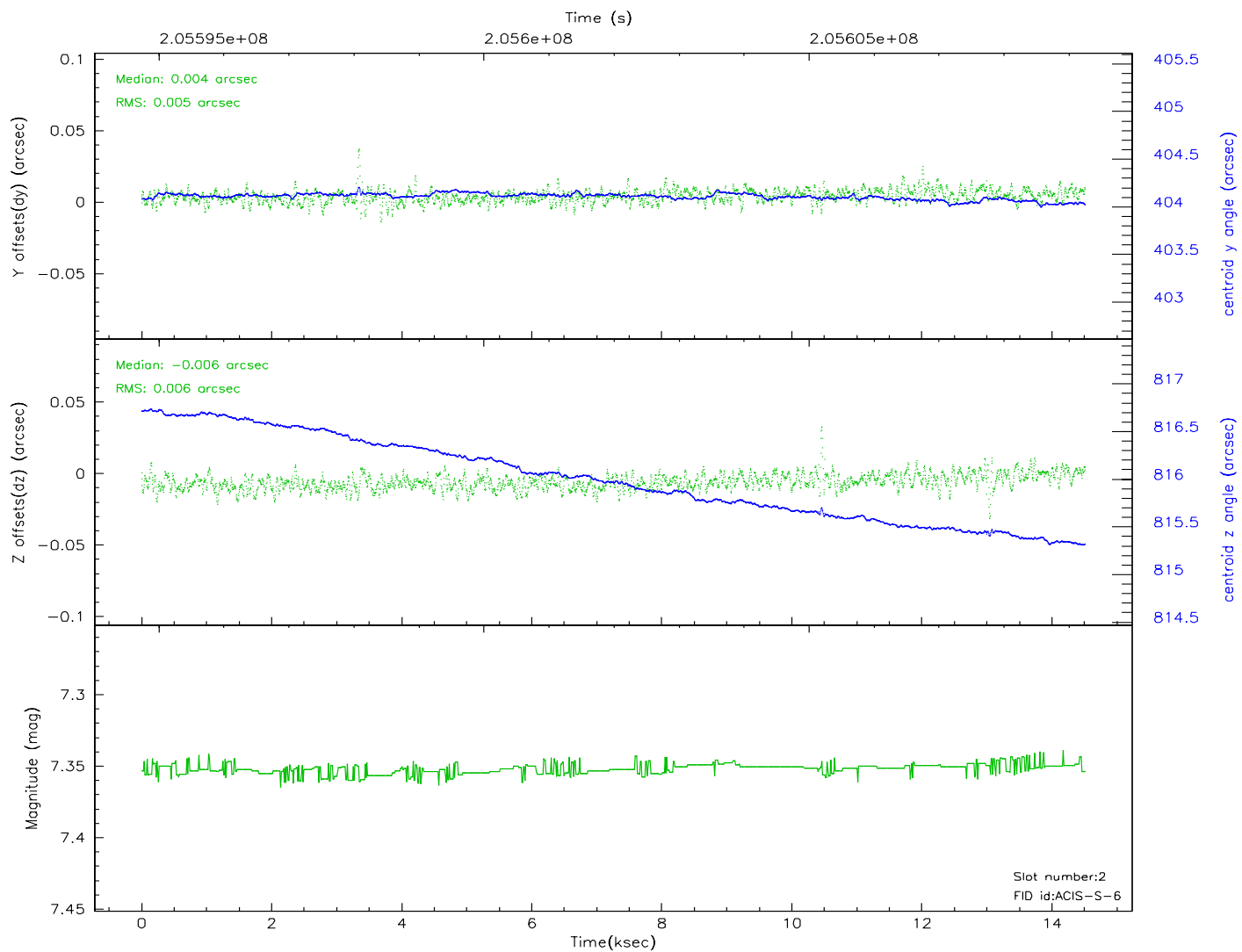
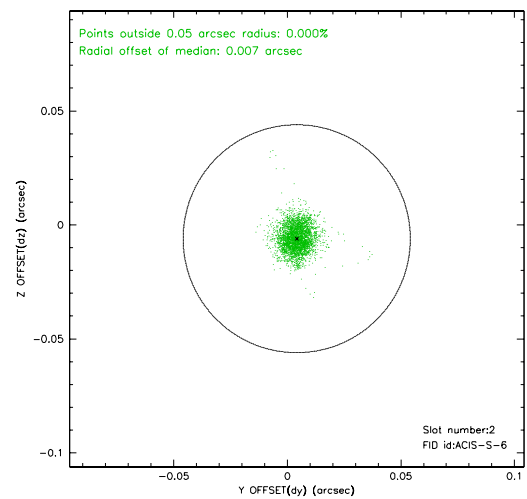
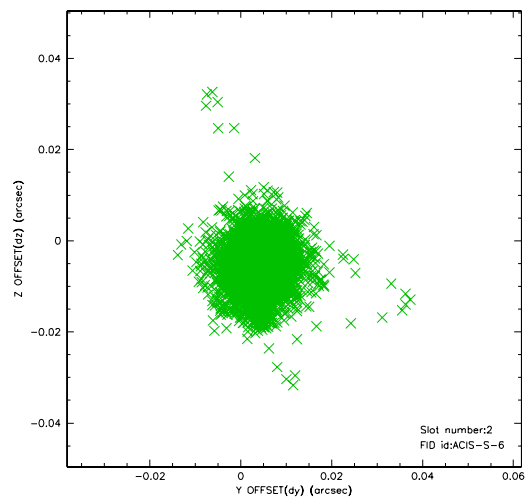
2.5.1 Slot 0



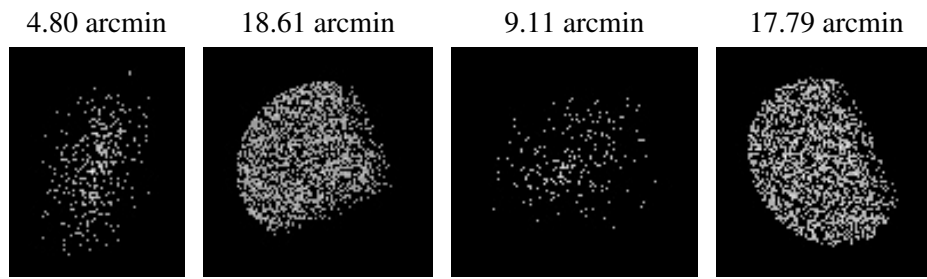
2.5.2 Slot 1



2.5.3 Slot 2



3 Point Sources



A Summary

A.1 Status

V&V Scientist	Jen Lauer
V&V Date (YYYY-MM-DD)	2006.04.30
V&V Edition	1
V&V Disposition and Status	OK
V&V Charge Time	14.505

A.2 Comments

Monitor constraint met.