

# V&V Reference Report

## L2 ASCDS Version : 7.6.7.2

Observation 4743 - L2 Version 001  
Chandra X-Ray Center

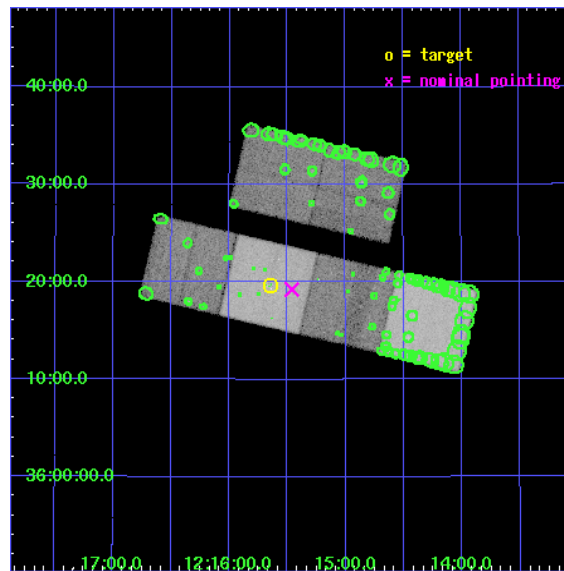
L2 Processing Date : May 27 2006

## Contents

<b>1</b>	<b>Front</b>	<b>2</b>
<b>2</b>	<b>OBI</b>	<b>3</b>
2.1	OBI . . . . .	3
2.1.1	Images . . . . .	3
2.1.2	Bias . . . . .	3
2.1.3	Parameters . . . . .	4
2.1.4	Events . . . . .	4
2.2	Compared Parameters . . . . .	5
2.3	Aspect . . . . .	6
2.4	Star Slots . . . . .	9
2.4.1	Slot 3 . . . . .	9
2.4.2	Slot 4 . . . . .	10
2.4.3	Slot 5 . . . . .	11
2.4.4	Slot 6 . . . . .	12
2.4.5	Slot 7 . . . . .	13
2.5	FID Slots . . . . .	14
2.5.1	Slot 0 . . . . .	14
2.5.2	Slot 1 . . . . .	15
2.5.3	Slot 2 . . . . .	16
<b>3</b>	<b>Point Sources</b>	<b>17</b>
<b>A</b>	<b>Summary</b>	<b>18</b>
A.1	Status . . . . .	18
A.2	Comments . . . . .	18

# 1 Front

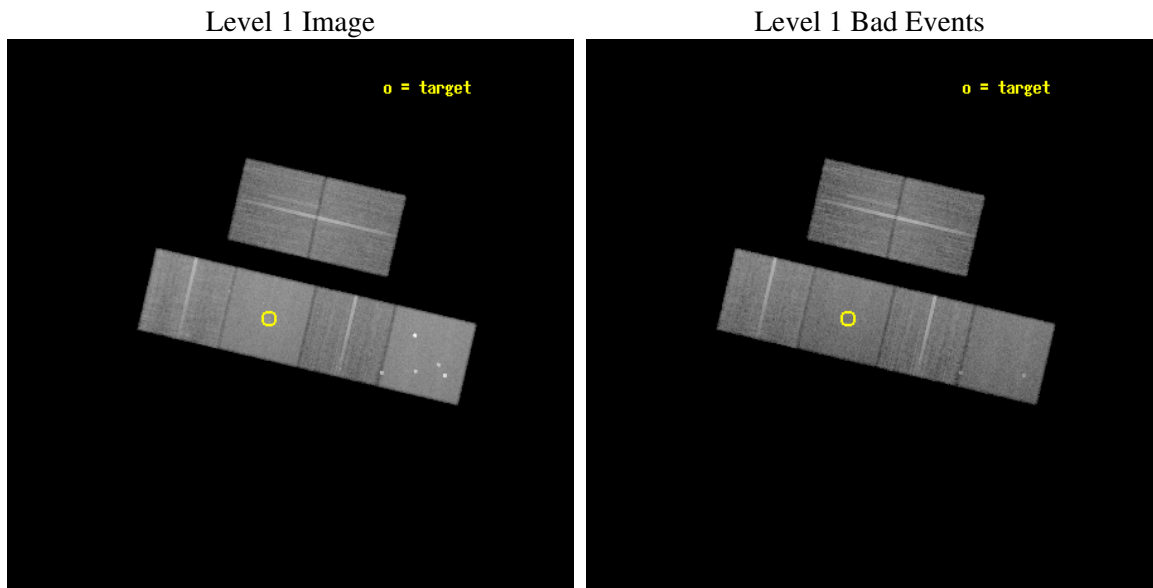
seq_num	600398
obs_id	4743
title	The discrete X-ray source populations in an age sequence of nearby starburst galaxies
observer	Dr. Andreas Zezas
object	NGC4214
dtcycle	0
cycle	P
ra_targ	183.912083
dec_targ	36.327778
ra_nom	183.86543845854
dec_nom	36.320856437959
roll_nom	193.12440116606
revision	2
ontime	27558.399897337
livetime	27209.438844161
ontime2	27558.399897337
ontime3	27555.15891704
ontime5	27558.399897337
ontime6	27558.399897337
ontime7	27558.399897337
ontime8	27555.158907056
l2events	382047



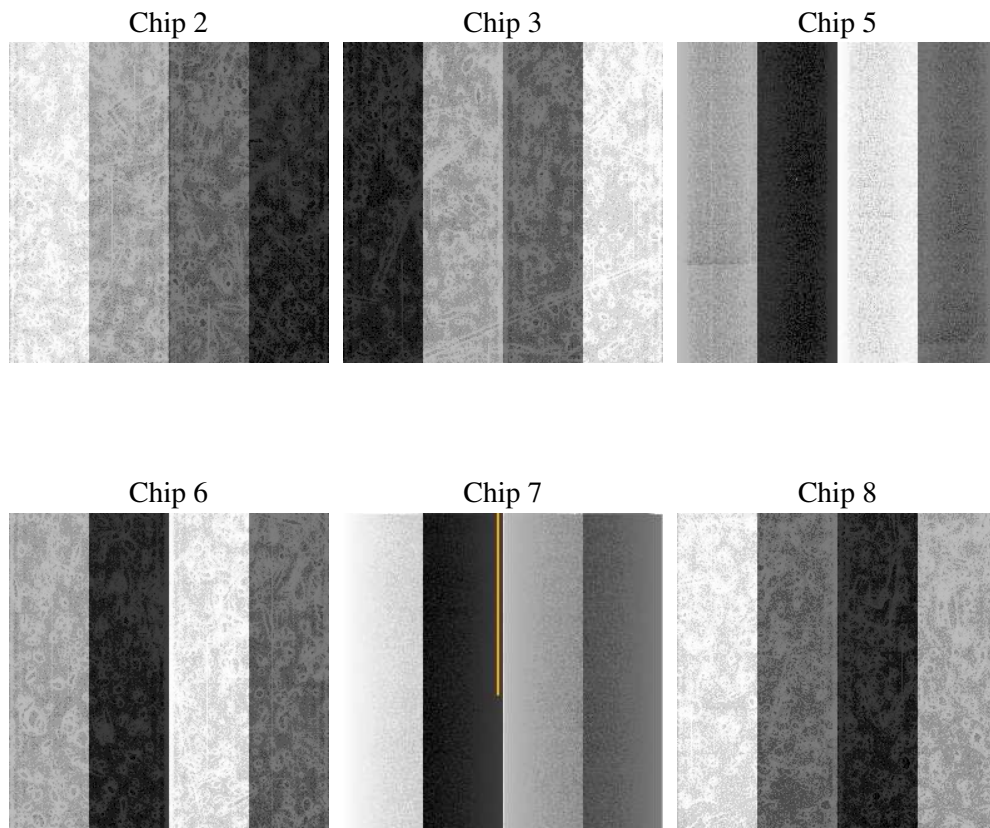
## 2 OBI

### 2.1 OBI

#### 2.1.1 Images



#### 2.1.2 Bias



### 2.1.3 Parameters

obi_num	0
ascdsver	7.6.7.2
caldsver	3.2.2
date	2006-05-27T10:15:41
revision	2

sched_exp_time	27798.146000
ontime	27561.563931137
ontime2	27561.563931137
ontime3	27558.32295084
ontime5	27561.563931137
ontime6	27561.563931137
ontime7	27561.563931137
ontime8	27558.322881222
l1events	1475572

### 2.1.4 Events

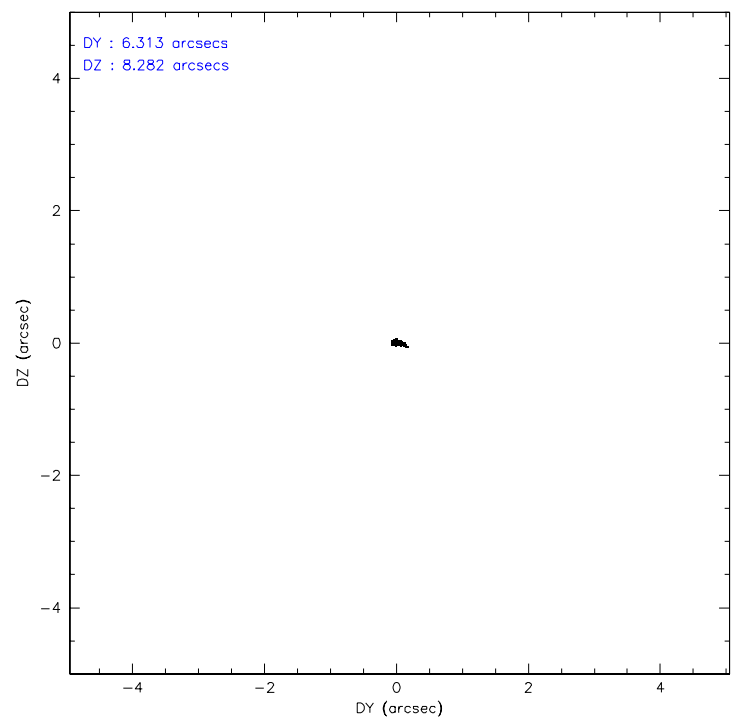
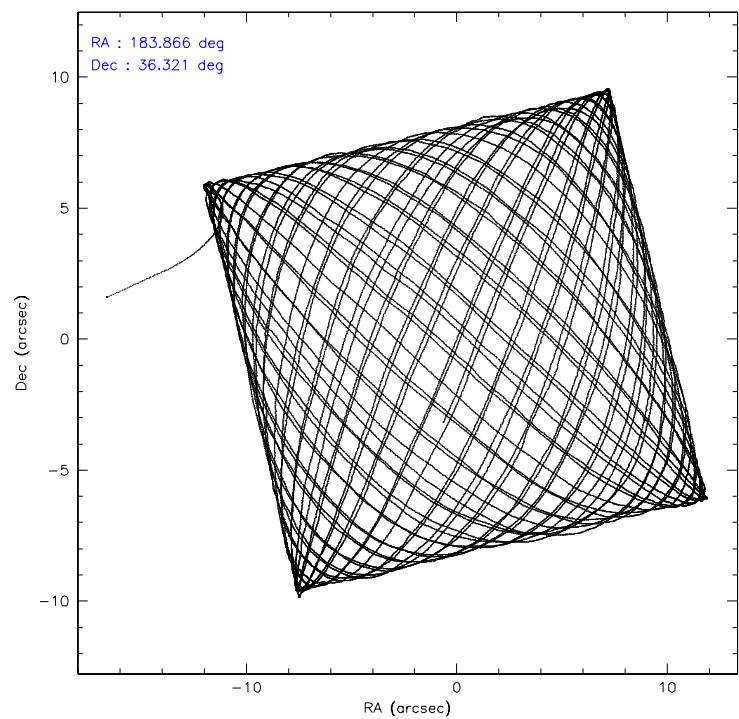
	ccd 2	ccd 3	ccd 5	ccd 6	ccd 7	ccd 8
level 1 events	205691	200411	316136	208613	281592	263129
rejected events	169836	163789	162831	171103	164995	196606
rejected %	82%	81%	51%	82%	58%	74%

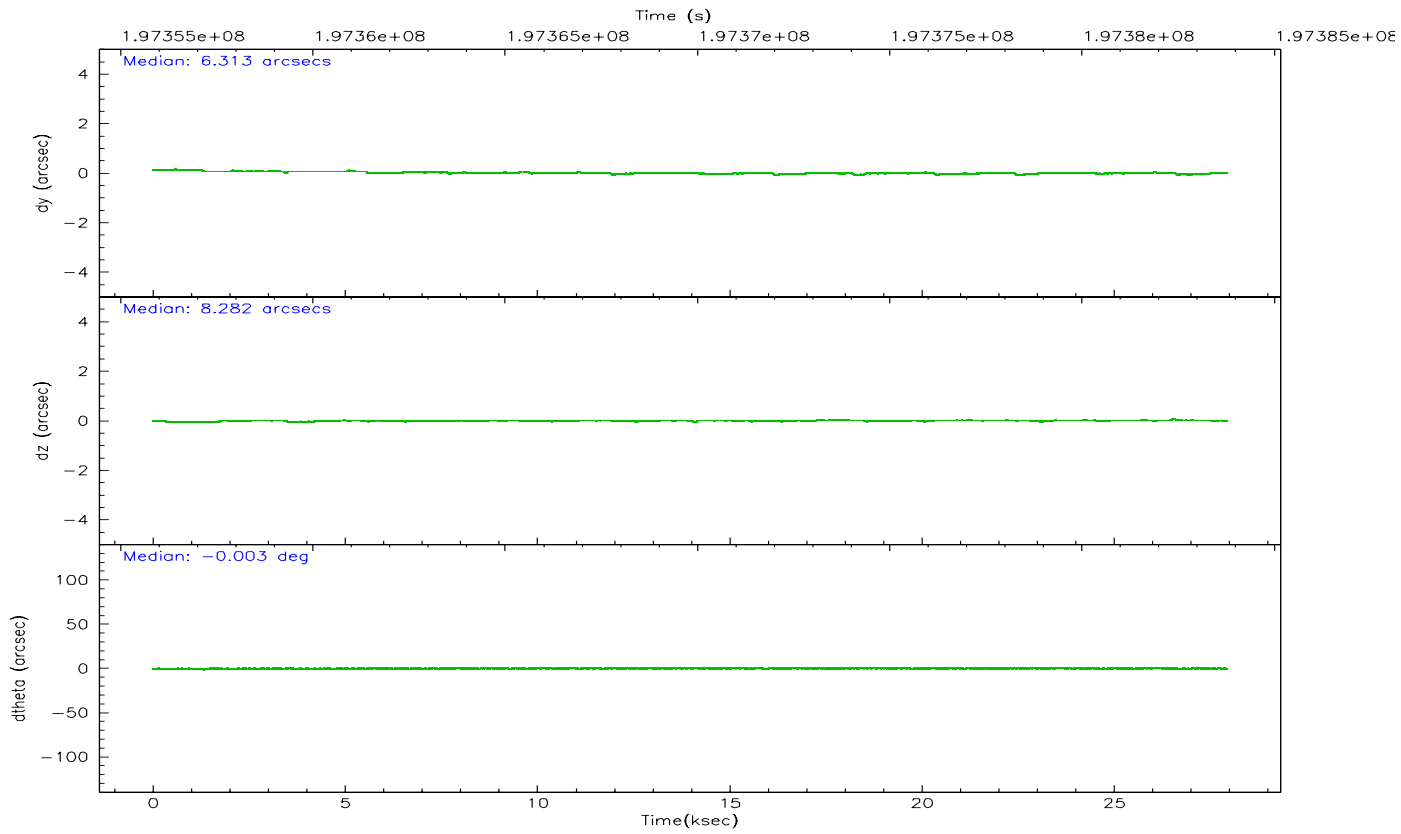
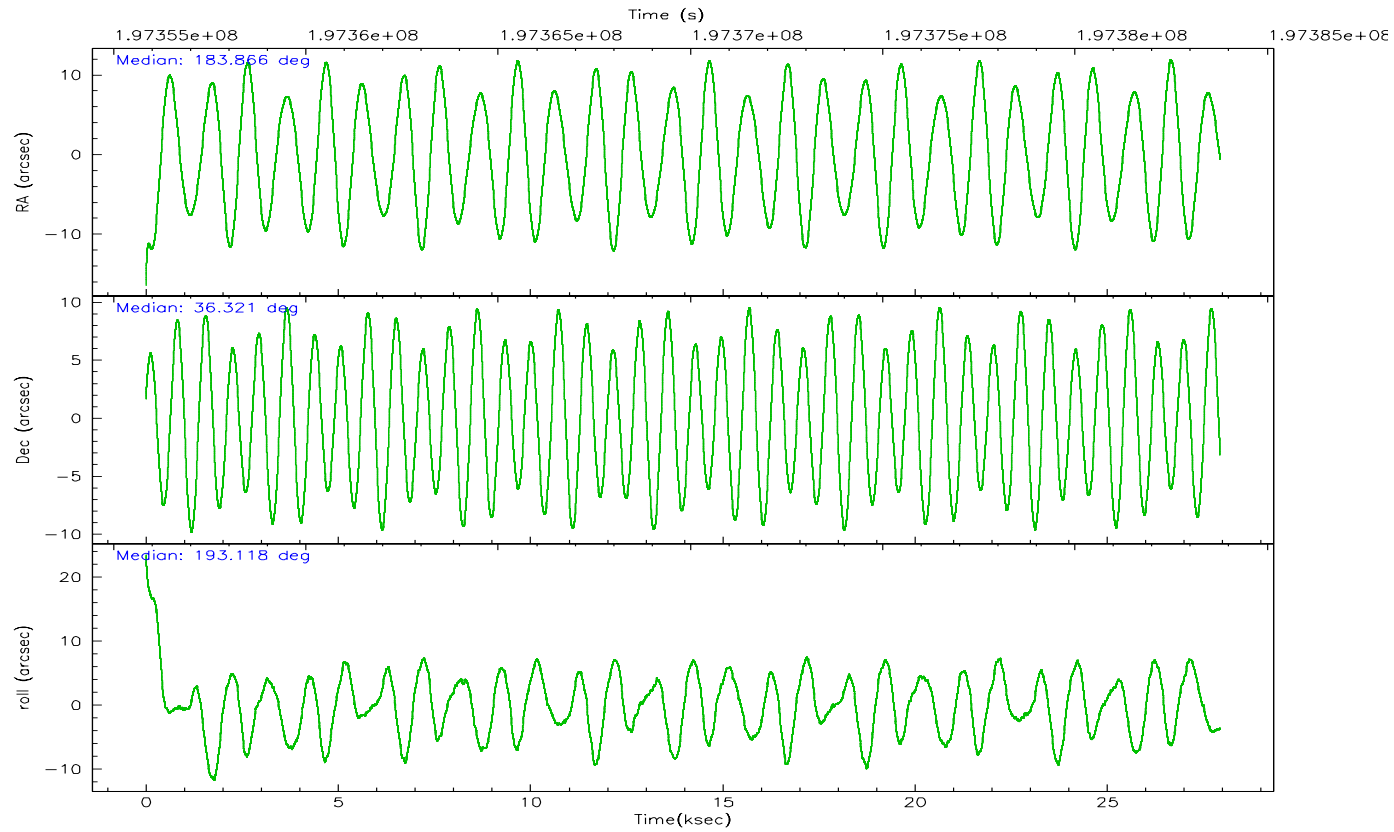
	ccd 2	ccd 3	ccd 5	ccd 6	ccd 7	ccd 8
grade 0 events	20160	20680	21451	19802	7570	27765
	9%	10%	6%	9%	2%	10%
grade 1 events	196	189	981	151	150	209
	0%	0%	0%	0%	0%	0%
grade 2 events	5831	5613	45943	6423	28170	12989
	2%	2%	14%	3%	10%	4%
grade 3 events	2594	2785	3135	2718	5683	5913
	1%	1%	0%	1%	2%	2%
grade 4 events	2622	2742	3141	2686	5588	5481
	1%	1%	0%	1%	1%	2%
grade 5 events	7509	8271	13966	9000	17042	11684
	3%	4%	4%	4%	6%	4%
grade 6 events	4650	4805	79647	5888	69604	14375
	2%	2%	25%	2%	24%	5%
grade 7 events	162129	155326	147872	161945	147785	184713
	78%	77%	46%	77%	52%	70%

## 2.2 Compared Parameters

Parameter	Planned	Actual	Parameter	Planned	Actual
Instrument	ACIS	ACIS	Obspar format version number	6	6
Detector	ACIS-235678	ACIS-235678	Obspar file type	PREDICTED	ACTUAL
Grating	NONE	NONE	Obspar update status	NONE	UPDATED
Data mode	FAINT	FAINT	On-chip summing requested	N	N
Observation mode	POINTING	POINTING	Subarray requested	NONE	NONE
Pointing RA	183.889783	183.8654384585415	Alternating exposures requested	N	N
Pointing Dec	36.339723	36.32085643795899	Primary exposure time	0.000000	3.2
Pointing Roll	192.953349	193.1244011660556			
SIM focus pos (mm)	-0.684267	-0.6828225247311905			
SIM defocus (mm)	0	0.001444936568705701			
SIM translation stage pos (mm)	-190.132523	-190.1400660498719			
SIM translation stage offset (mm)	0	0.00754346686406393			
Observation start time	197355979.184000	197354253.7002			
Observation start date	2004-04-03T05:05:15	2004-04-03T04:37:33			
Observation end time	197383777.184000	197384091.96401			
Observation end date	2004-04-03T12:48:33	2004-04-03T12:54:51			
Read mode	TIMED	TIMED			

2.3 Aspect





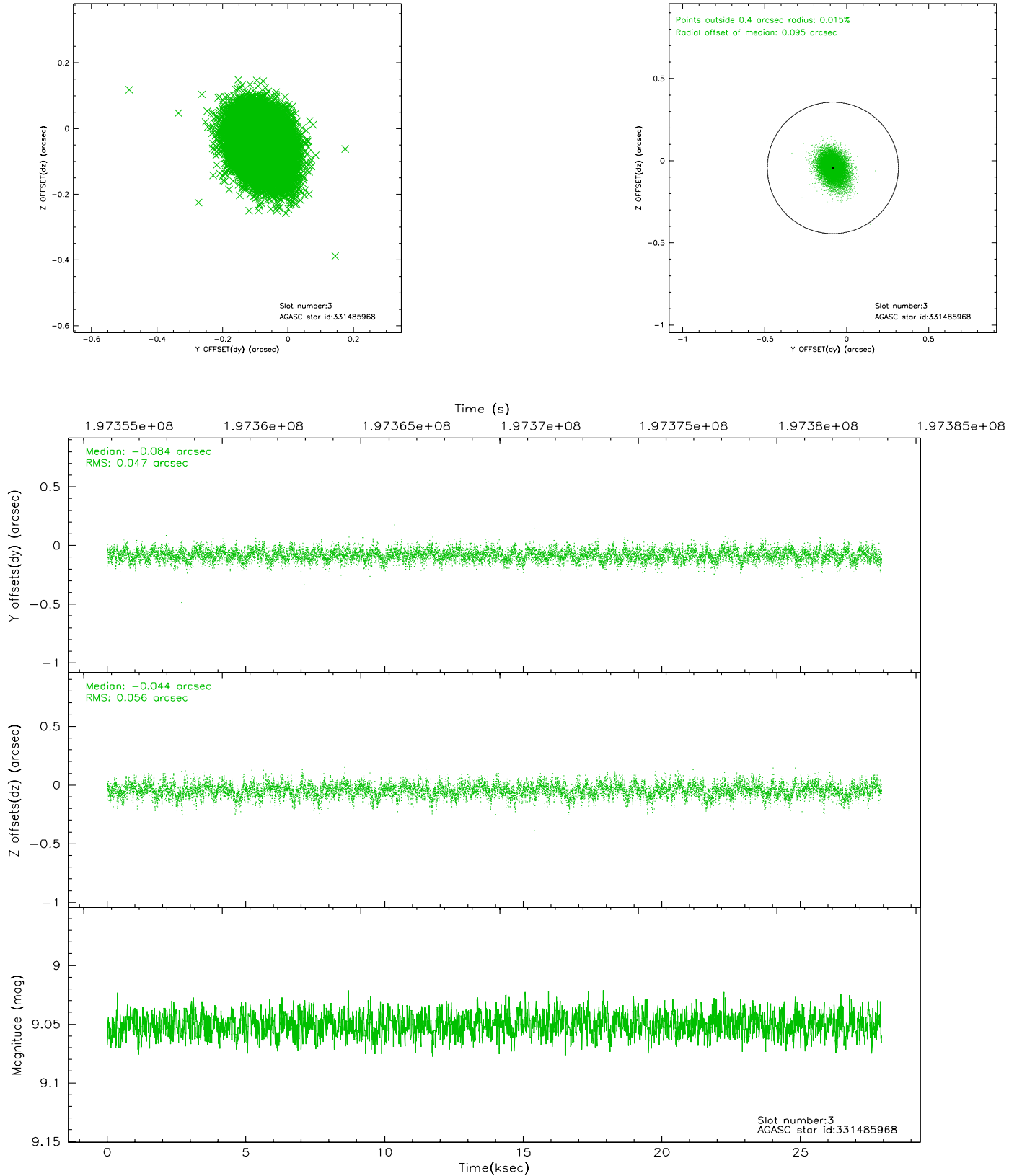
### Slot Statistics

slot	status	id	mag	n_pts	med_dy	med_dz	dr1	dr2	ra	dec	mean_y	mean_z
0	FID	ACIS-S-2	7.10	6816	-0.023	-0.025	0.007	0.011	0.000000	0.000000	-759.10	-1729.50
1	FID	ACIS-S-4	7.21	6816	0.029	0.018	0.005	0.009	0.000000	0.000000	2154.21	178.91
2	FID	ACIS-S-5	7.23	6816	-0.037	0.016	0.006	0.010	0.000000	0.000000	-1811.82	172.72
3	GUIDE	331485968	9.05	13624	-0.084	-0.044	0.077	0.127	183.439805	36.736932	944.13	-1687.14
4	GUIDE	331488032	8.80	13631	-0.028	0.079	0.077	0.125	183.136084	36.256011	2198.14	-204.65
5	GUIDE	331488832	9.95	13613	0.042	-0.052	0.128	0.205	184.485285	36.899363	-2123.09	-1584.44
6	GUIDE	331496008	9.38	13626	0.043	0.030	0.100	0.164	184.214946	35.936223	-598.57	1626.82
7	GUIDE	331496608	9.62	13624	0.022	-0.012	0.099	0.158	183.557200	35.638037	1514.80	2242.72

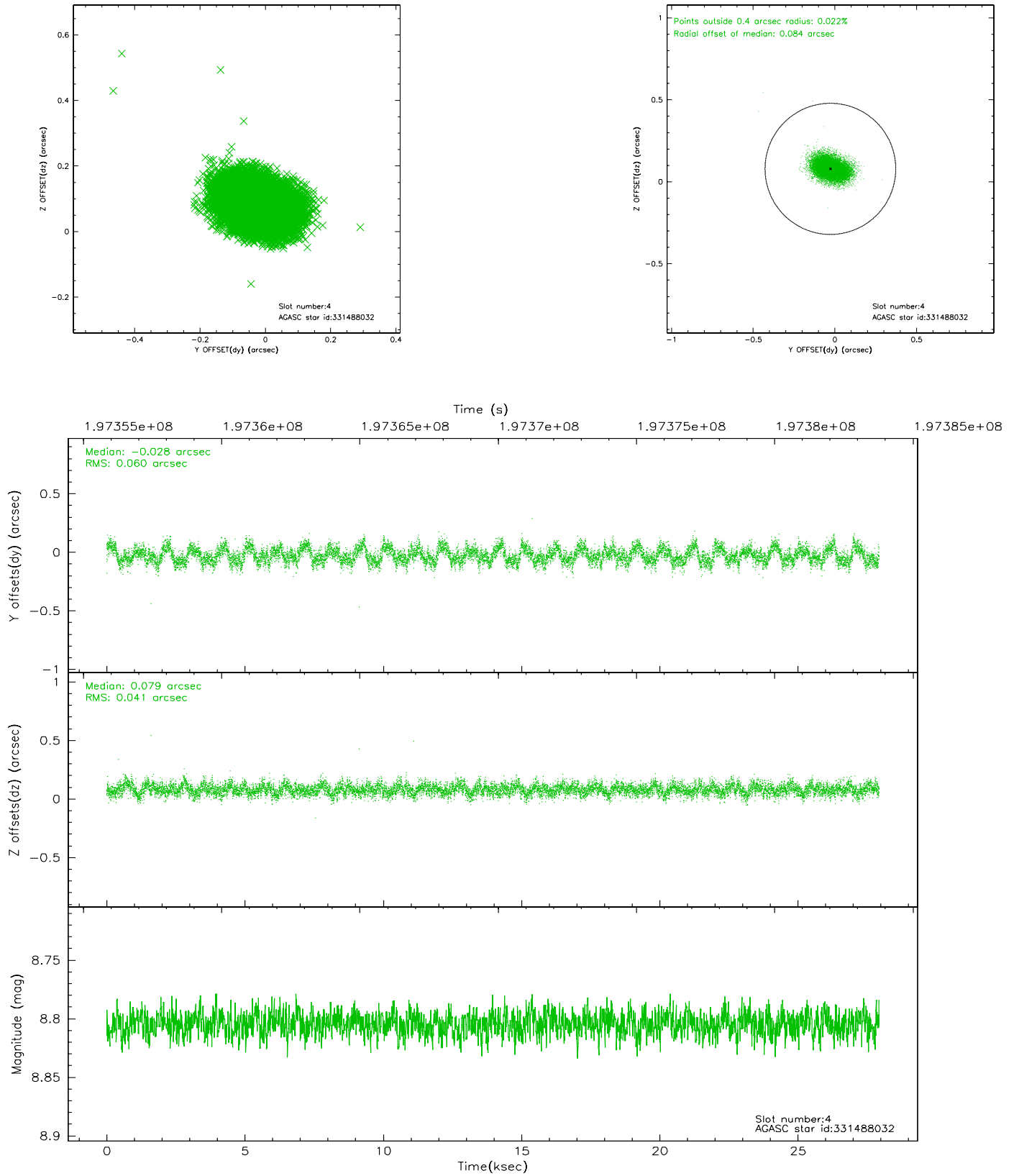


## 2.4 Star Slots

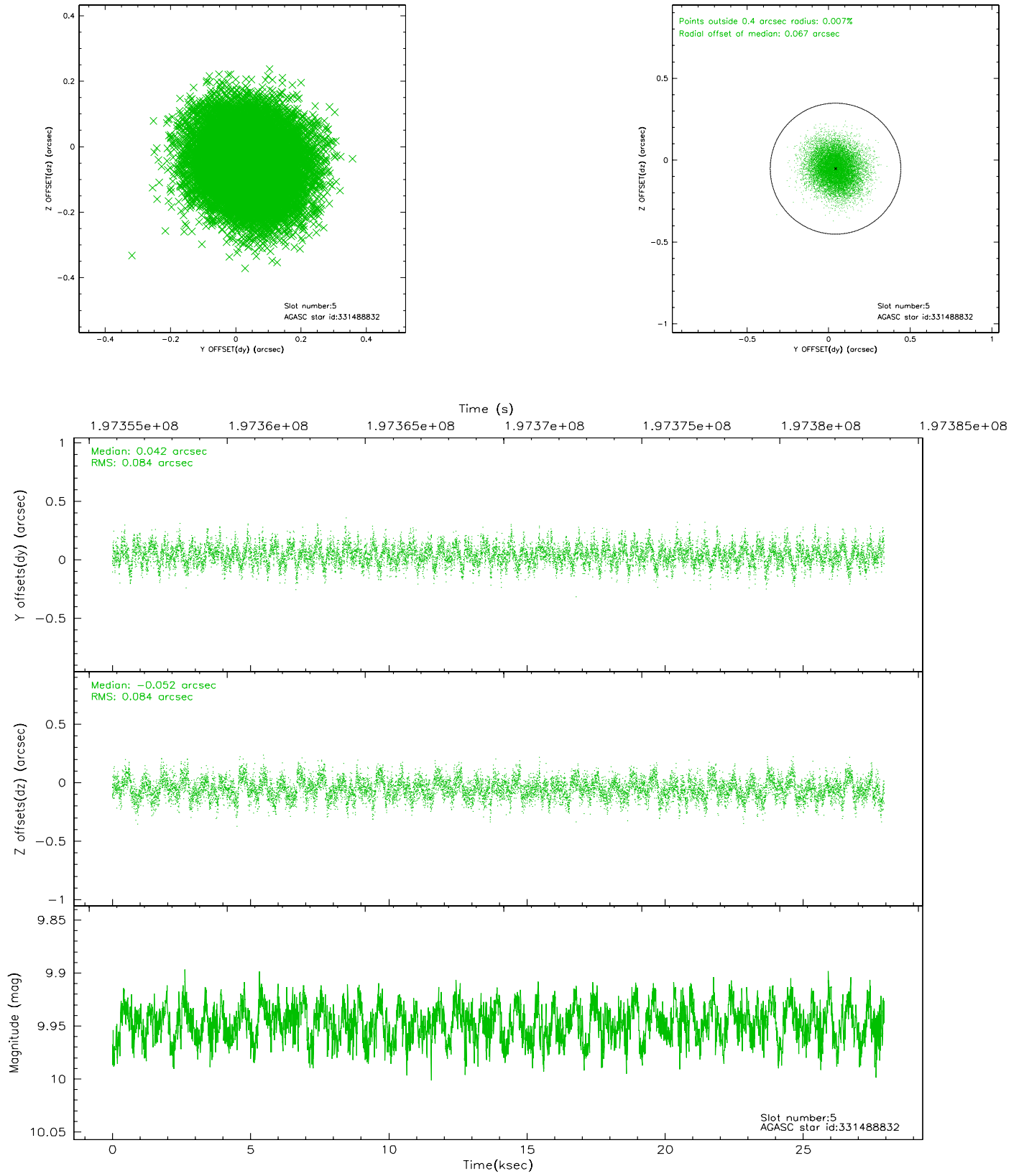
### 2.4.1 Slot 3



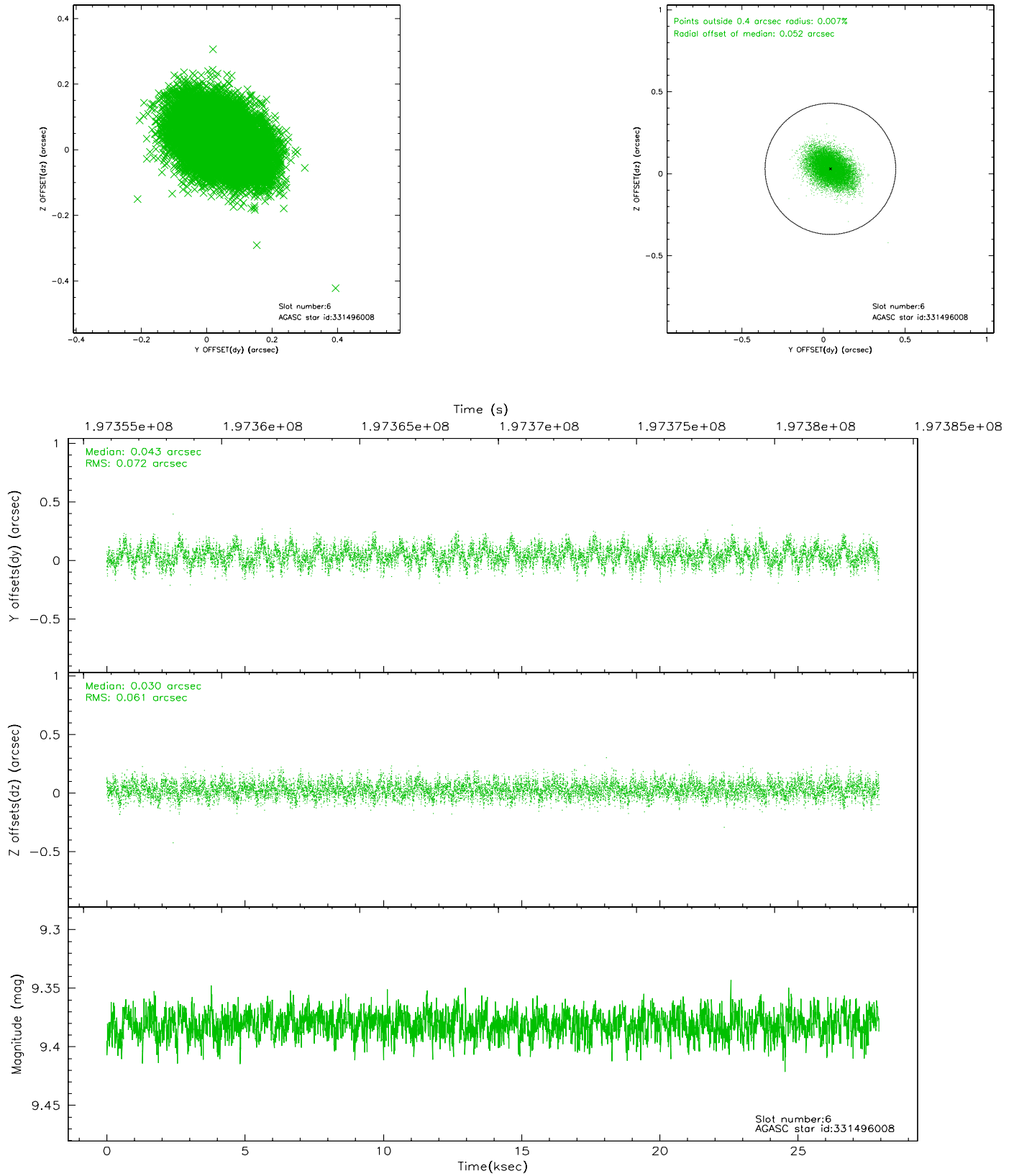
## 2.4.2 Slot 4



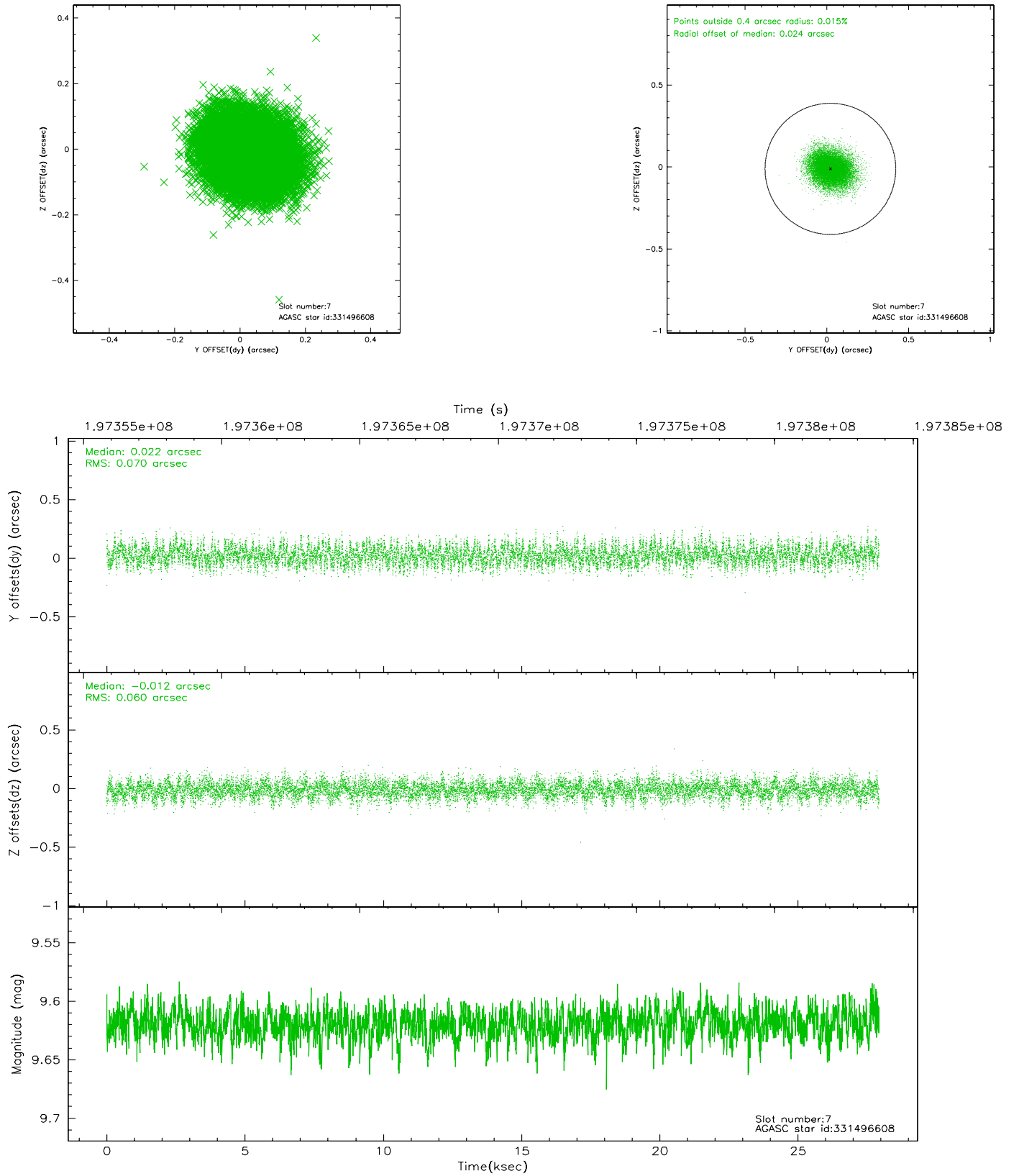
### 2.4.3 Slot 5



## 2.4.4 Slot 6

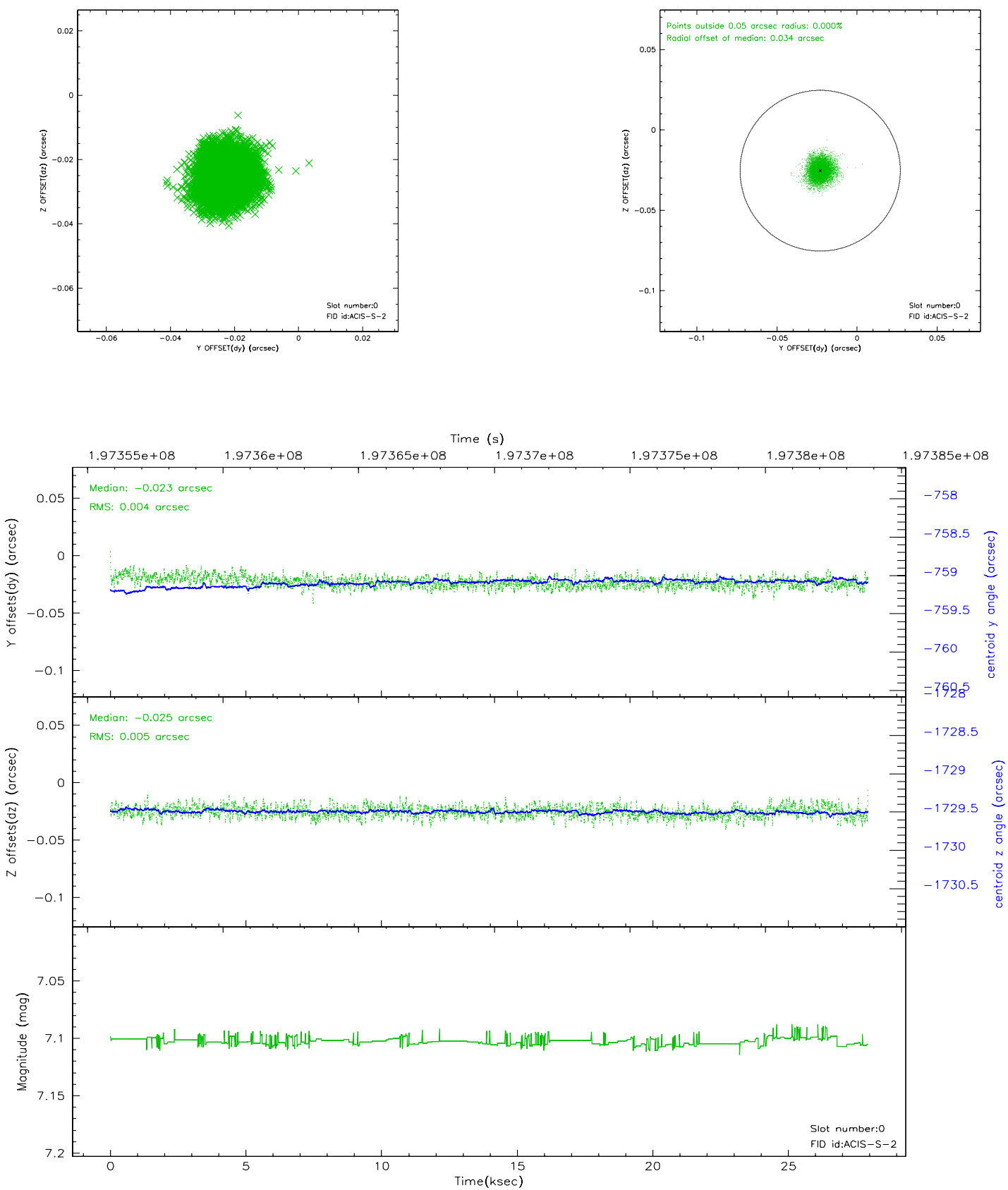


## 2.4.5 Slot 7

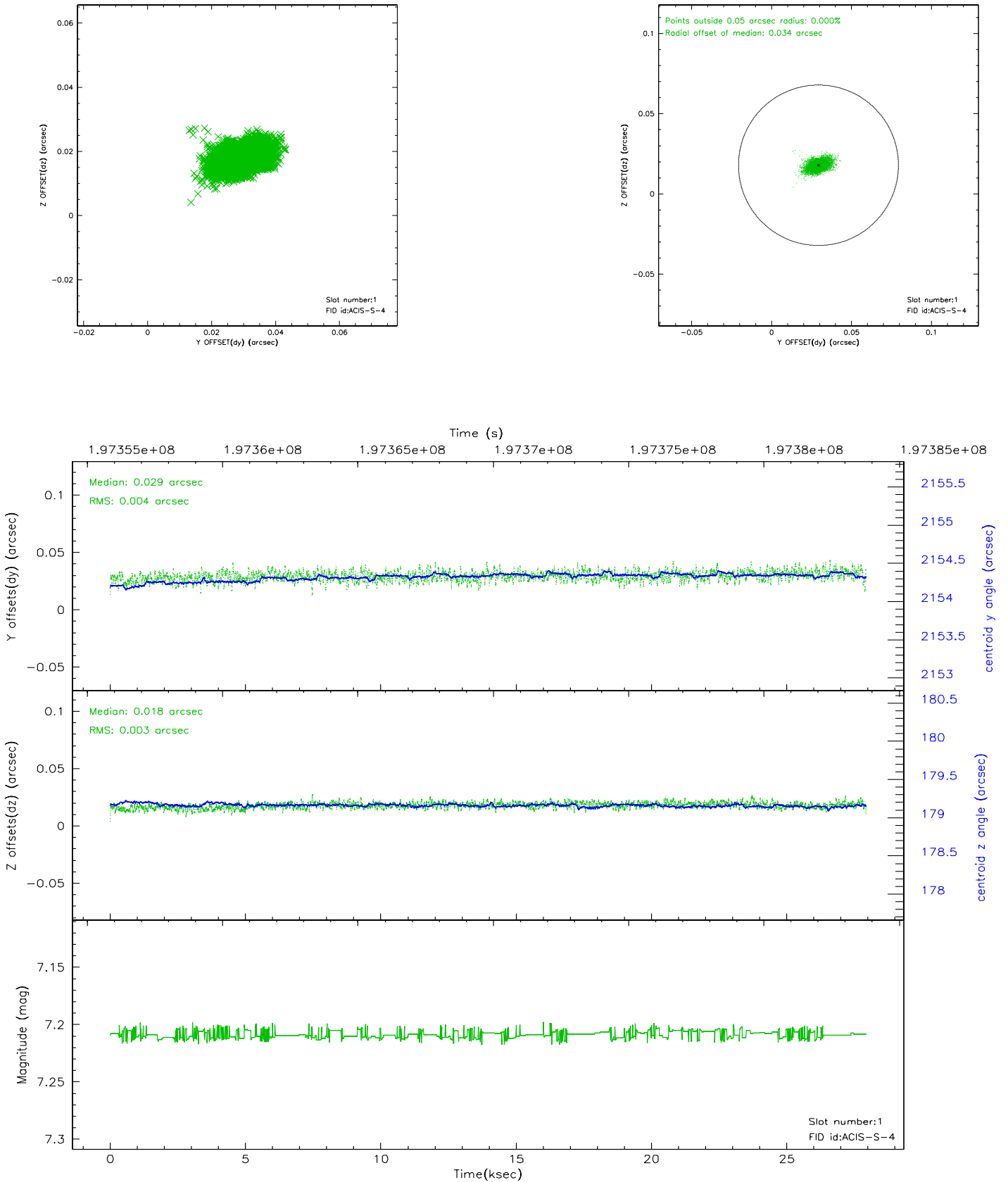


## 2.5 FID Slots

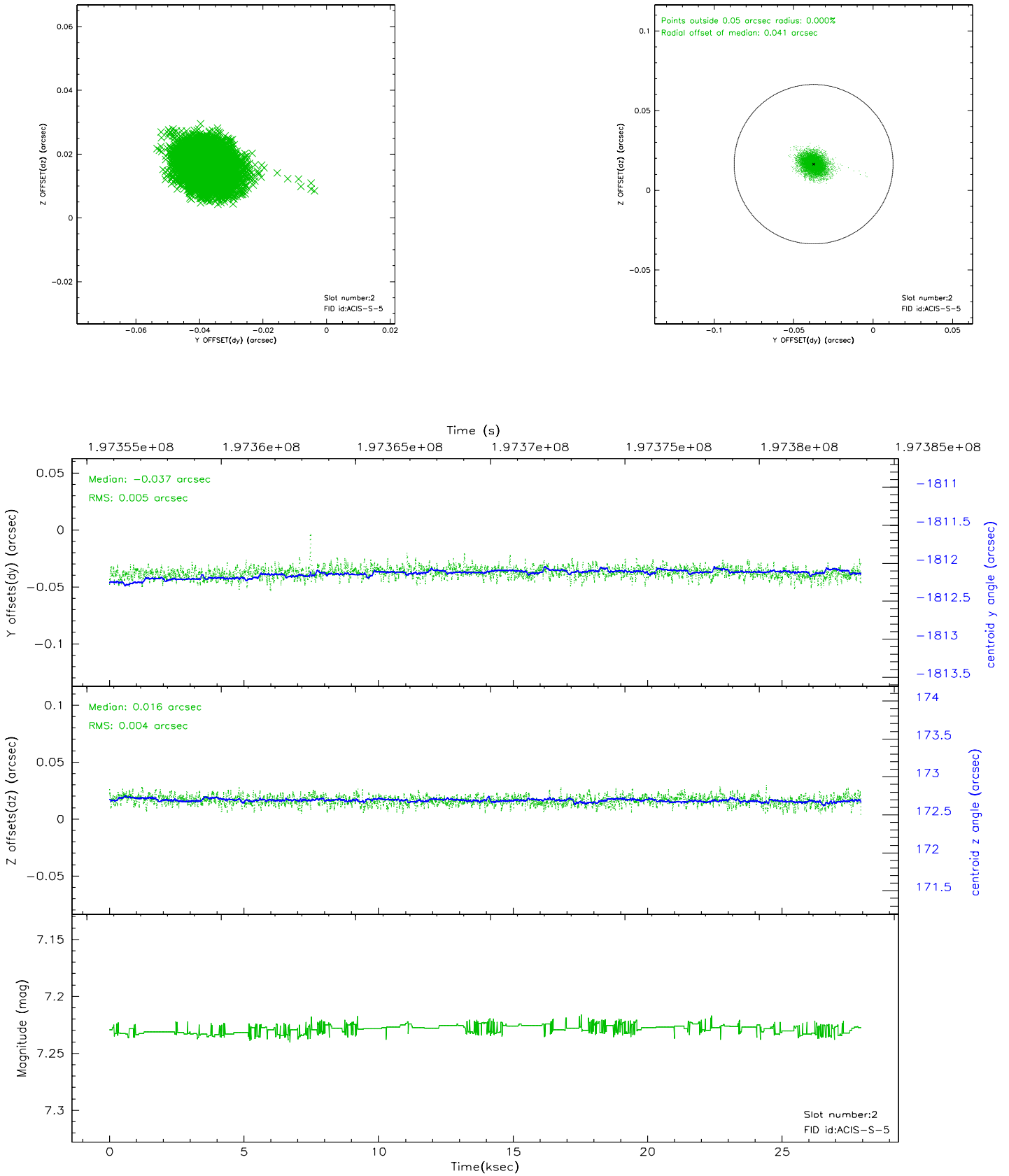
### 2.5.1 Slot 0



## 2.5.2 Slot 1

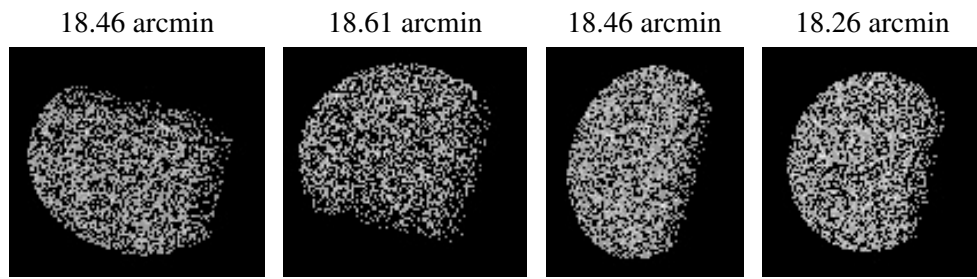


### 2.5.3 Slot 2





### 3 Point Sources



## A Summary

### A.1 Status

V&V Scientist	Beth Sundheim
V&V Date (YYYY-MM-DD)	2006.05.30
V&V Edition	1
V&V Disposition and Status	OK
V&V Charge Time	27.558

### A.2 Comments