

V&V Reference Report

L2 ASCDS Version : 8.4.5

Observation 4729 - L2 Version 3
Chandra X-Ray Center

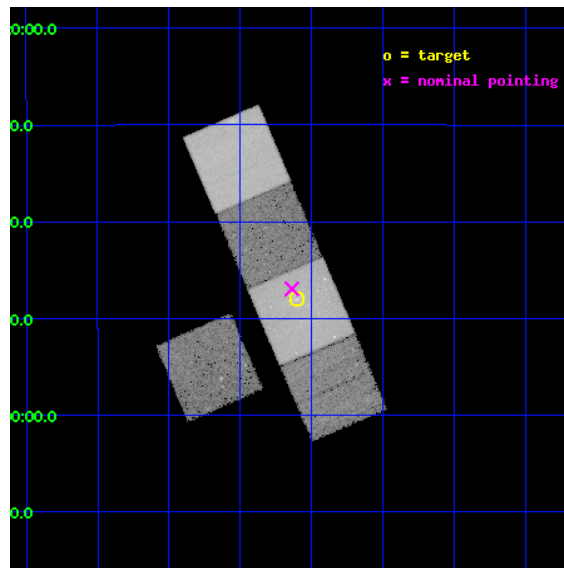
L2 Processing Date : Nov 11 2012

Contents

1	Front	2
2	OBI	3
2.1	OBI	3
2.1.1	Images	3
2.1.2	Bias	3
2.1.3	Parameters	4
2.1.4	Events	4
2.2	Compared Parameters	5
2.3	Aspect	6
2.4	Star Slots	9
2.4.1	Slot 3	9
2.4.2	Slot 4	10
2.4.3	Slot 5	11
2.4.4	Slot 6	12
2.4.5	Slot 7	13
2.5	FID Slots	14
2.5.1	Slot 0	14
2.5.2	Slot 1	15
2.5.3	Slot 2	16
A	Summary	17
A.1	Status	17
A.2	Comments	17

1 Front

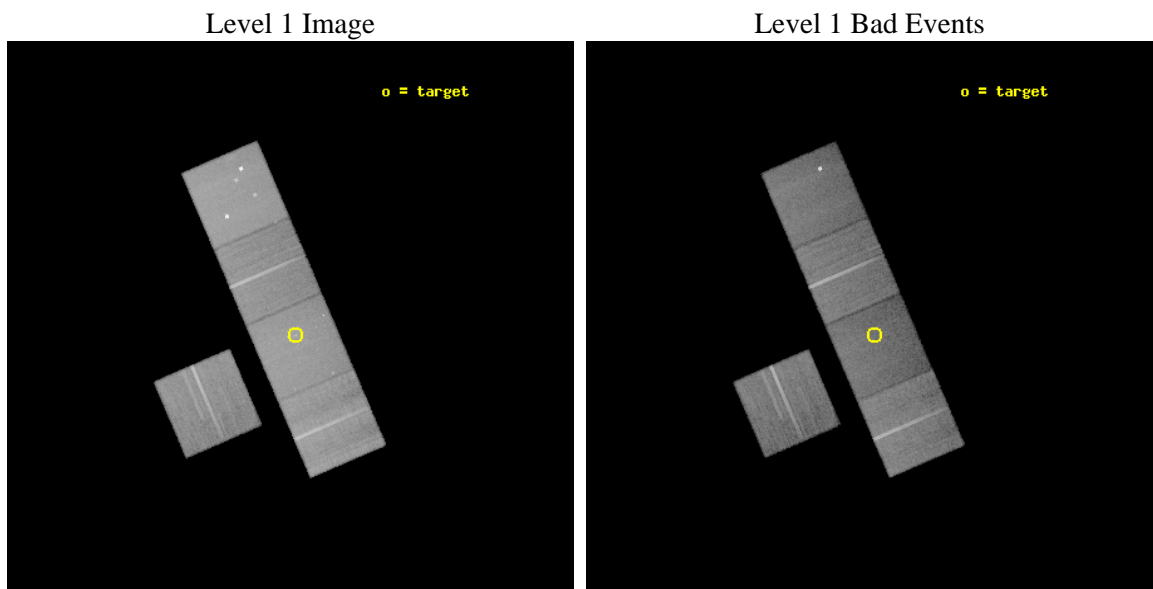
seq_num	600384	Sequence number
obs_id	4729	Observation id
title	Deep Chandra and Hubble Observations NGC 4697, the Nearest Optically Luminous, X-ray Faint Elliptical Galaxy	Proposal title
observer	Dr. CRAIG SARAZIN	Principal investigator
object	NGC4697	Source name
dtcycle	0	
cycle	P	events from which exps? Prim/Second/Both
ra_targ	192.149583	Observer's specified target RA [deg]
dec_targ	-5.800556	Observer's specified target Dec [deg]
ra_nom	192.15937981123	Nominal RA [deg]
dec_nom	-5.7822099735091	Nominal Dec [deg]
roll_nom	66.769359243022	Nominal Roll [deg]
revision	3	Processing version of data
ontime	38604.299925745	Sum of GTIs [s]
livetime	38099.906327143	Livetime [s]
ontime3	38594.876965135	Sum of GTIs [s]
ontime5	38604.299925745	Sum of GTIs [s]
ontime6	38604.299925745	Sum of GTIs [s]
ontime7	38604.299925745	Sum of GTIs [s]
ontime8	38604.299925745	Sum of GTIs [s]
l2events	343319	Number of level 2 events



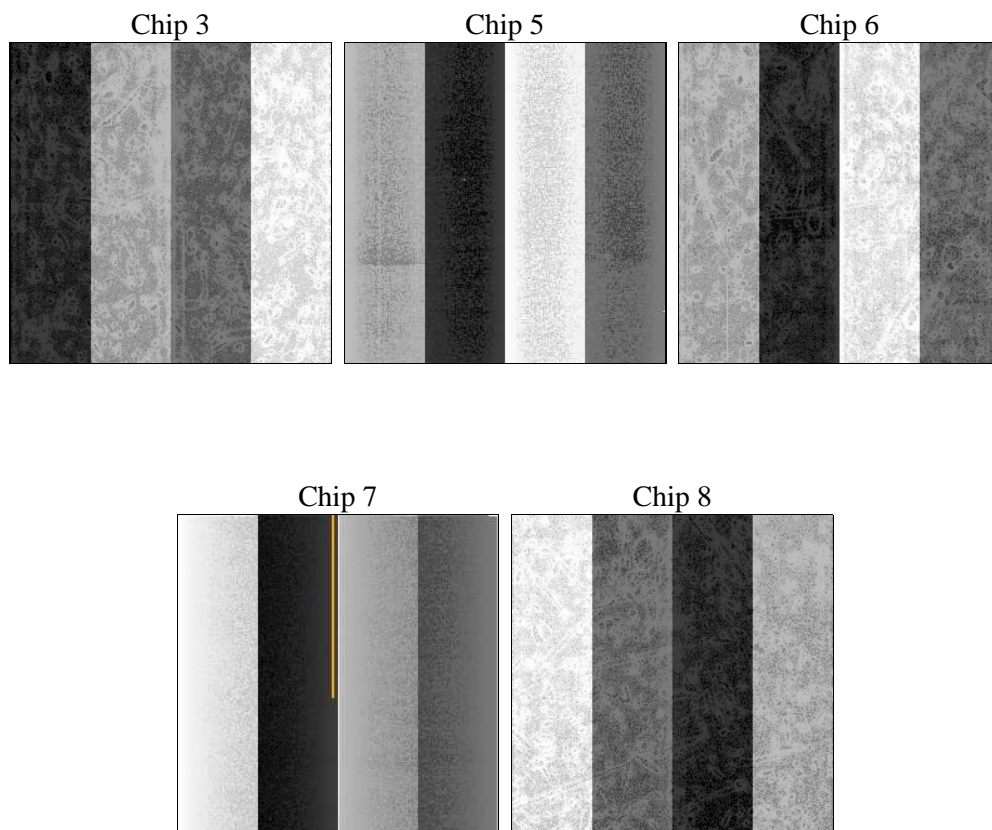
2 OBI

2.1 OBI

2.1.1 Images



2.1.2 Bias



2.1.3 Parameters

obi_num	0	Obi number	sched_exp_time	38500.000000	[s] Scheduled observation exposure time
ascdsver	8.4.5	Processing system revision	ontime	38604.299925745	Sum of GTIs [s]
caldbver	4.5.2	 	ontime3	38594.876965135	Sum of GTIs [s]
date	2012-11-11T23:58:59	Date and time of file creation	ontime5	38604.299925745	Sum of GTIs [s]
revision	3	Processing version of data	ontime6	38604.299925745	Sum of GTIs [s]
			ontime7	38604.299925745	Sum of GTIs [s]
			ontime8	38604.299925745	Sum of GTIs [s]
			l1events	1253165	Number of level 1 events

2.1.4 Events

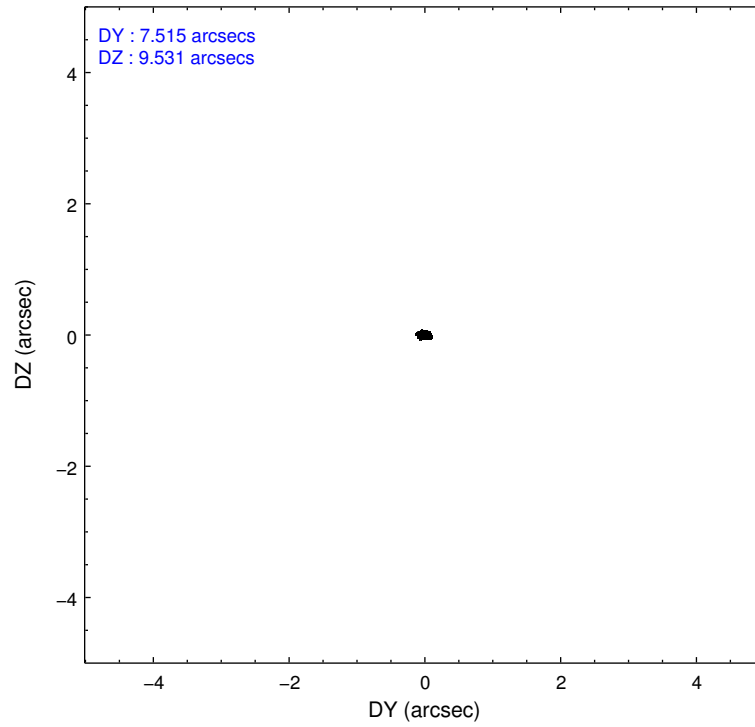
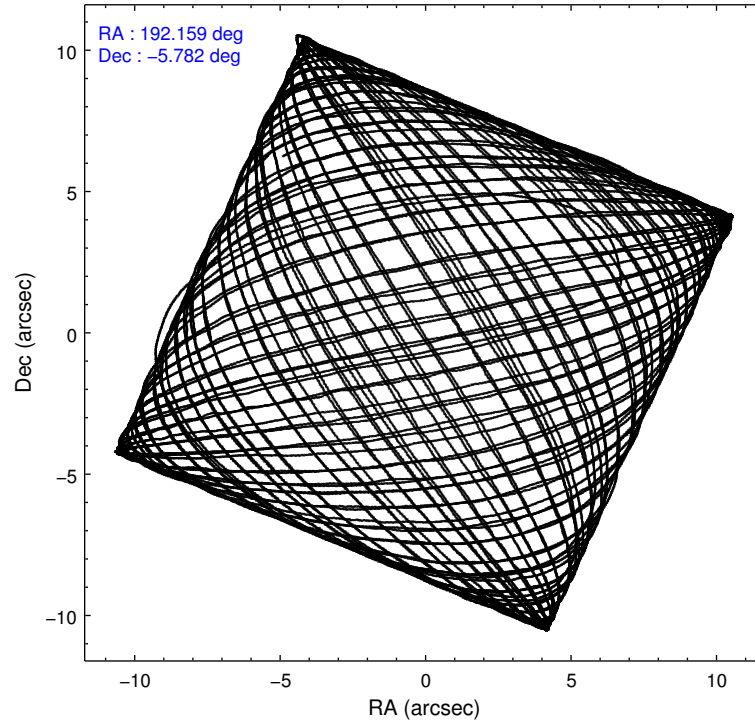
	ccd 3	ccd 5	ccd 6	ccd 7	ccd 8
level 1 events	199376	318168	208187	259032	268402
rejected events	178608	149665	183373	126681	204317
rejected %	89%	47%	88%	48%	76%

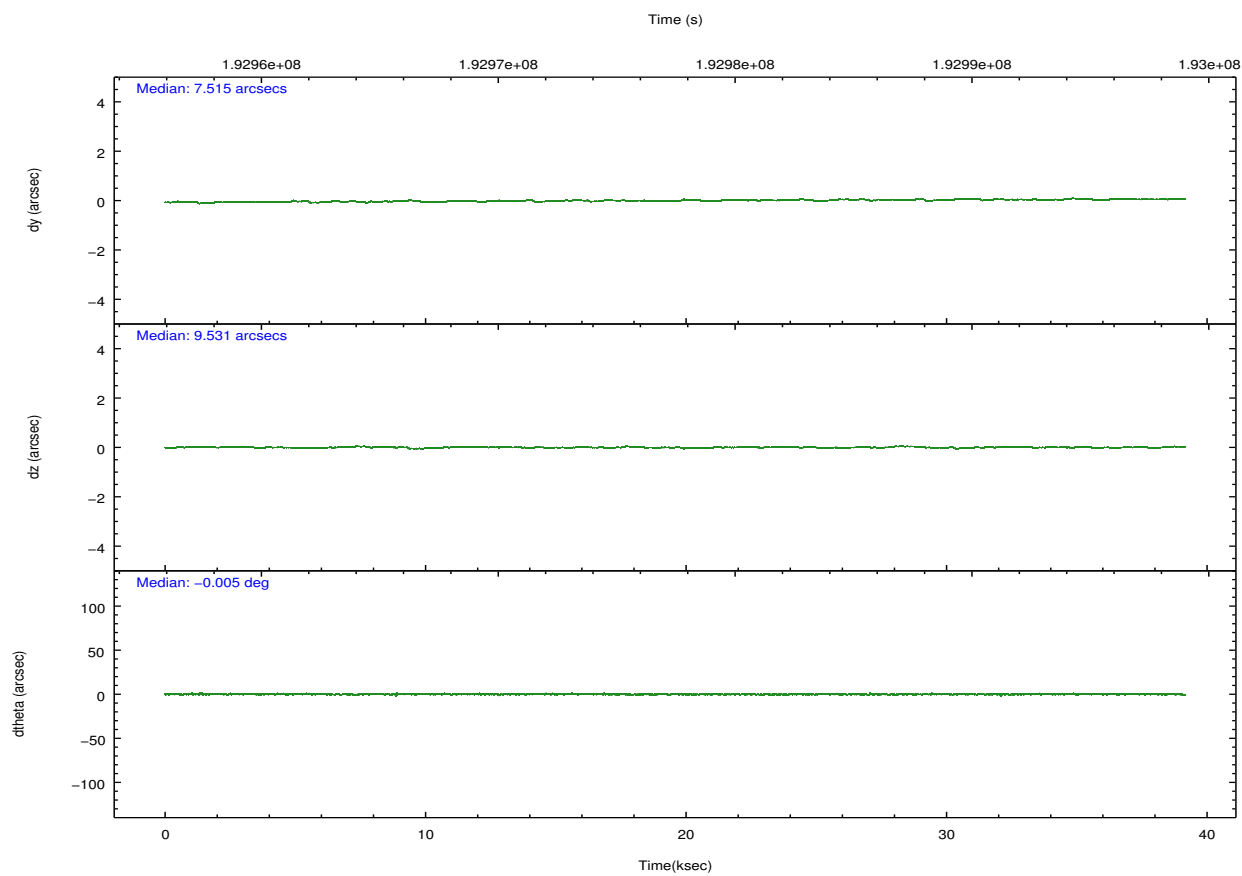
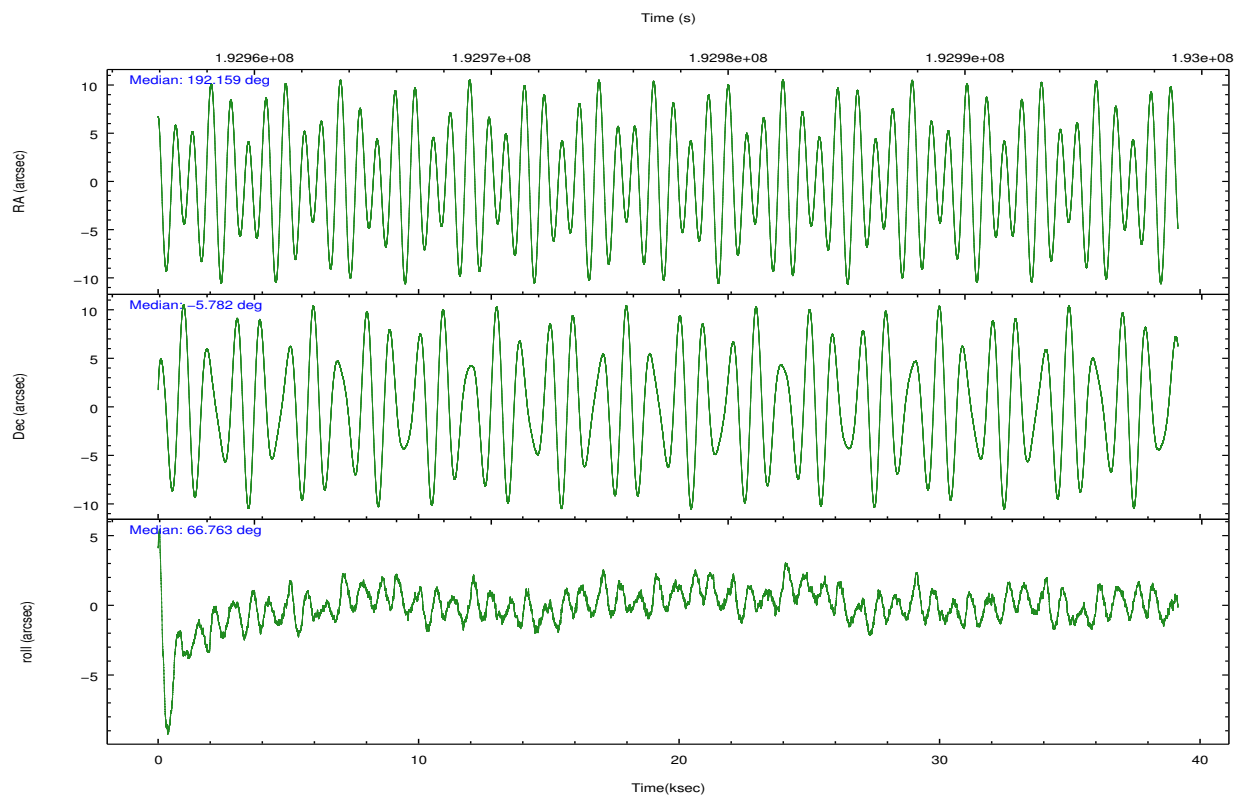
	ccd 3	ccd 5	ccd 6	ccd 7	ccd 8
grade 0 events	8284	25736	10347	14867	21248
	4%	8%	4%	5%	7%
grade 1 events	94	262	95	188	181
	0%	0%	0%	0%	0%
grade 2 events	4146	49044	4778	26419	13384
	2%	15%	2%	10%	4%
grade 3 events	2257	7483	2572	12505	6957
	1%	2%	1%	4%	2%
grade 4 events	2231	7149	2507	12291	6541
	1%	2%	1%	4%	2%
grade 5 events	8093	24252	8354	24696	11717
	4%	7%	4%	9%	4%
grade 6 events	3851	79100	4611	66281	15959
	1%	24%	2%	25%	5%
grade 7 events	170420	125142	174923	101785	192415
	85%	39%	84%	39%	71%

2.2 Compared Parameters

Parameter	Planned	Actual	Parameter	Planned	Actual
Instrument	ACIS	ACIS	Obspar format version number	7	7
Detector	ACIS-35678	ACIS-35678	Obspar file type	PREDICTED	ACTUAL
Grating	NONE	NONE	Obspar update status	NONE	UPDATED
Data mode	VFAINT	VFAINT	Number of optional ACIS chips dropped	0	0
Observation mode	POINTING	POINTING	On-chip summing requested	N	N
[deg] Pointing RA	192.162973	192.1593798112278	Subarray requested	NONE	NONE
[deg] Pointing Dec	-5.809223	-5.782209973509146	Alternating exposures requested	N	N
[deg] Pointing Roll	66.613091	66.76935924302155	[s] Primary exposure time	0.000000	3.1
[mm] SIM focus pos	-0.684267	-0.6828225247311905			
[mm] SIM defocus	0	0.001444936568705701			
[mm] SIM translation stage pos	-190.132523	-190.1400660498719			
[mm] SIM translation stage offset	0	0.00754346686406393			
[s] Observation start time (MET)	192958538.184000	192957346.3699			
Observation start date	2004-02-12T07:34:34	2004-02-12T07:15:46			
[s] Observation end time (MET)	192997038.184000	192997342.38415			
Observation end date	2004-02-12T18:16:14	2004-02-12T18:22:22			
Read mode	TIMED	TIMED			

2.3 Aspect



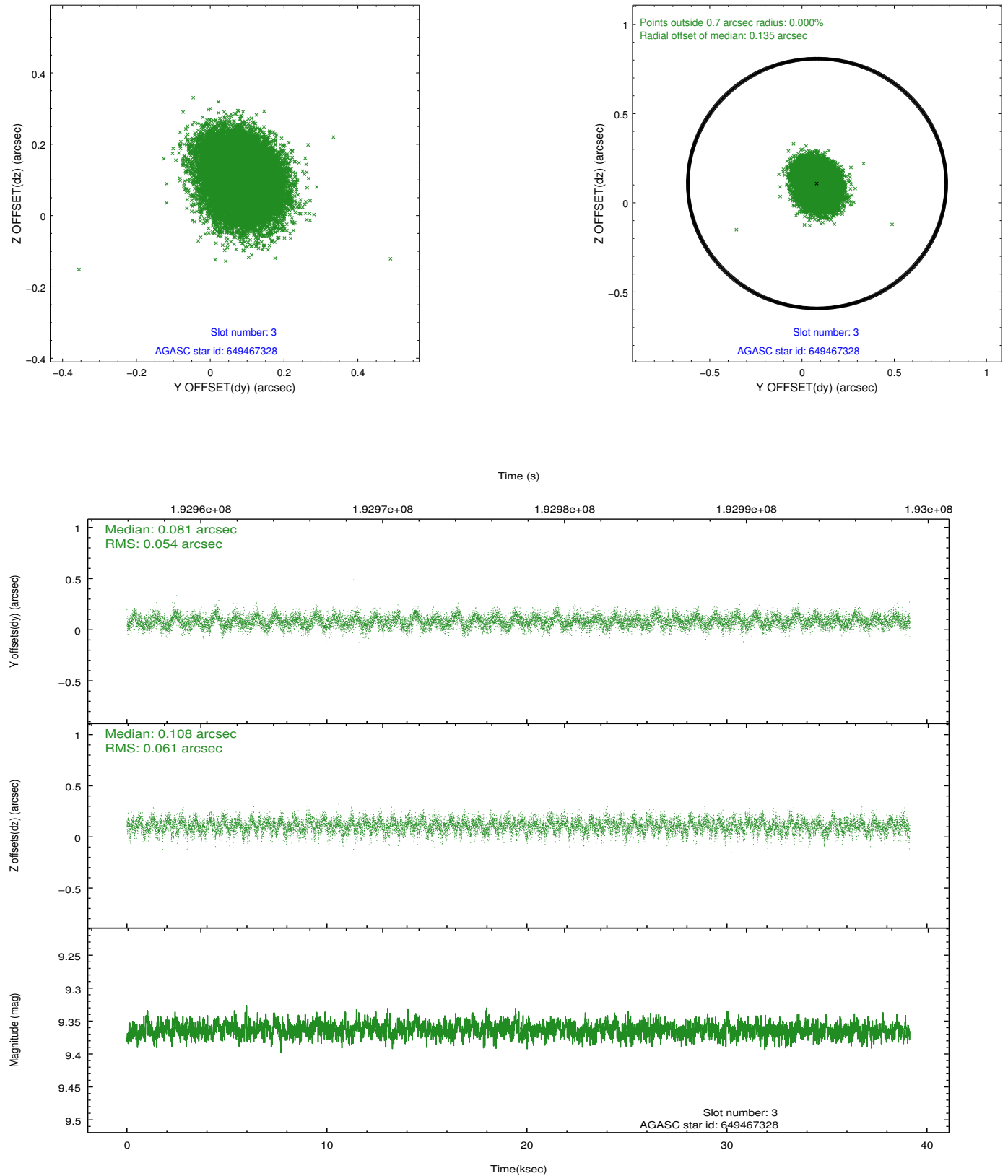


Slot Statistics

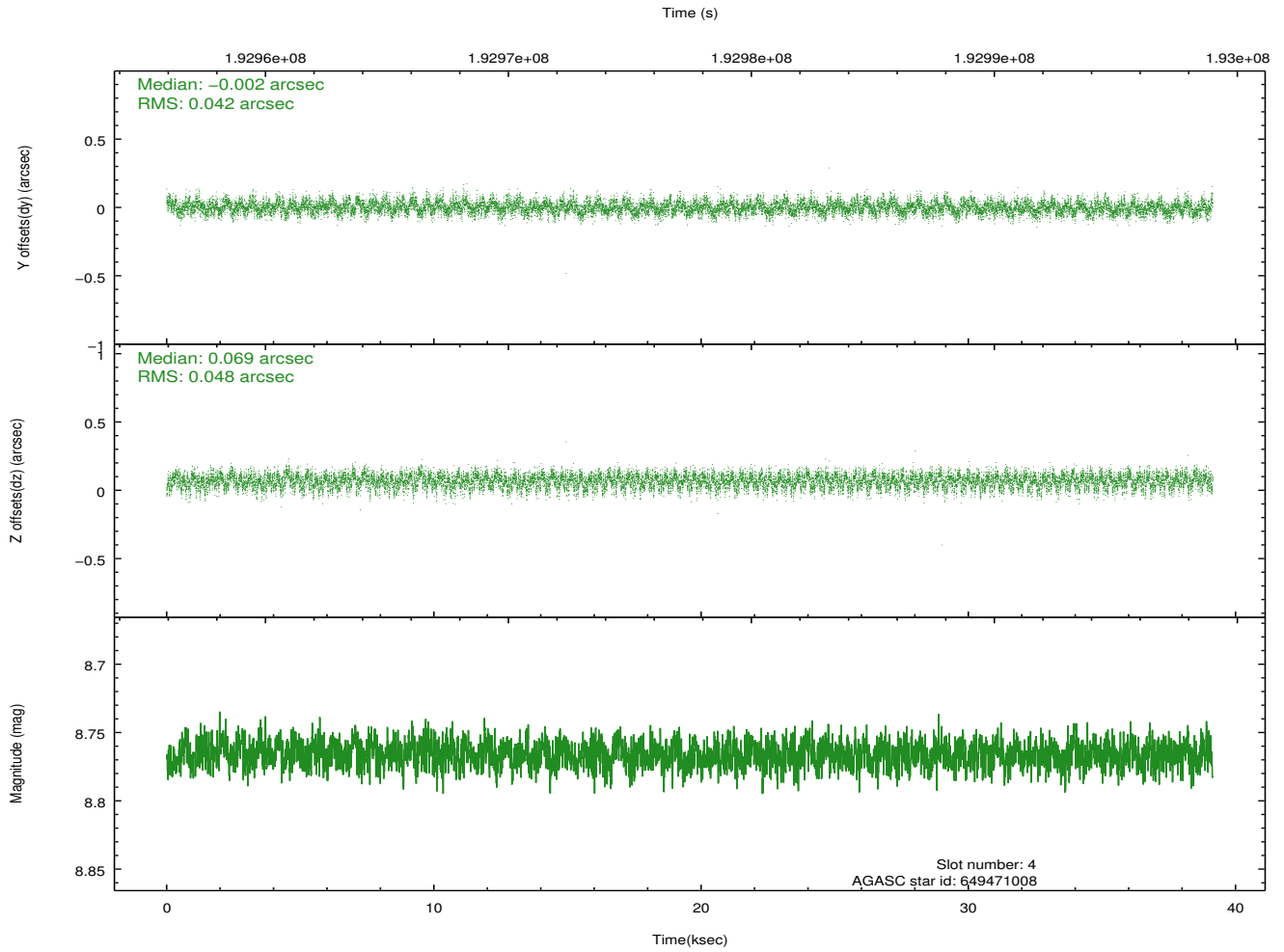
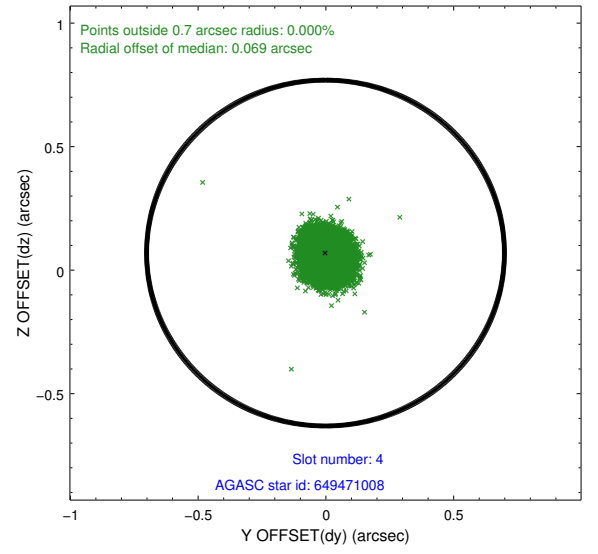
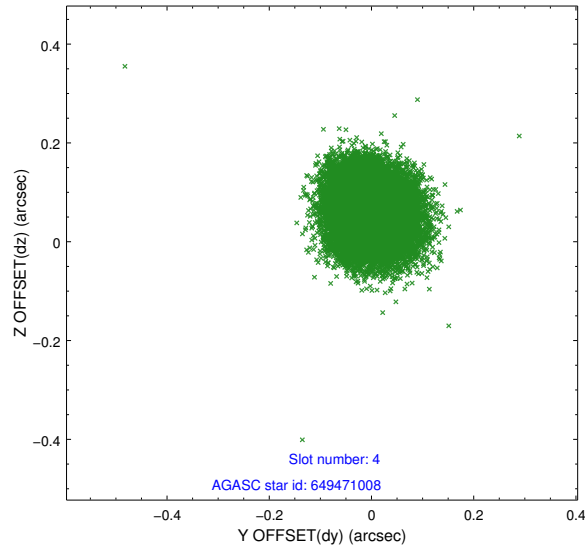
slot	status	id	mag	n_pts	med_dy	med_dz	dr1	dr2	ra	dec	mean_y	mean_z
0	FID	ACIS-S-2	7.10	9549	-0.037	-0.032	0.007	0.011	0.000000	0.000000	-760.29	-1730.81
1	FID	ACIS-S-4	7.20	9548	0.086	0.026	0.006	0.010	0.000000	0.000000	2153.07	177.76
2	FID	ACIS-S-5	7.23	9549	-0.081	0.015	0.006	0.011	0.000000	0.000000	-1813.18	171.38
3	GUIDE	649467328	9.36	19087	0.081	0.108	0.087	0.140	192.312268	-5.822418	169.07	-509.33
4	GUIDE	649471008	8.77	19091	-0.002	0.069	0.068	0.109	191.883055	-5.890695	-667.17	803.64
5	GUIDE	649471216	9.00	19091	0.004	-0.246	0.078	0.124	192.046748	-5.955581	-648.68	172.60
6	GUIDE	649471800	8.60	19082	-0.097	-0.149	0.056	0.090	192.288030	-5.445033	1381.11	109.20
7	GUIDE	649594712	8.43	19089	0.012	0.218	0.078	0.120	192.730305	-6.061024	-26.20	-2223.96

2.4 Star Slots

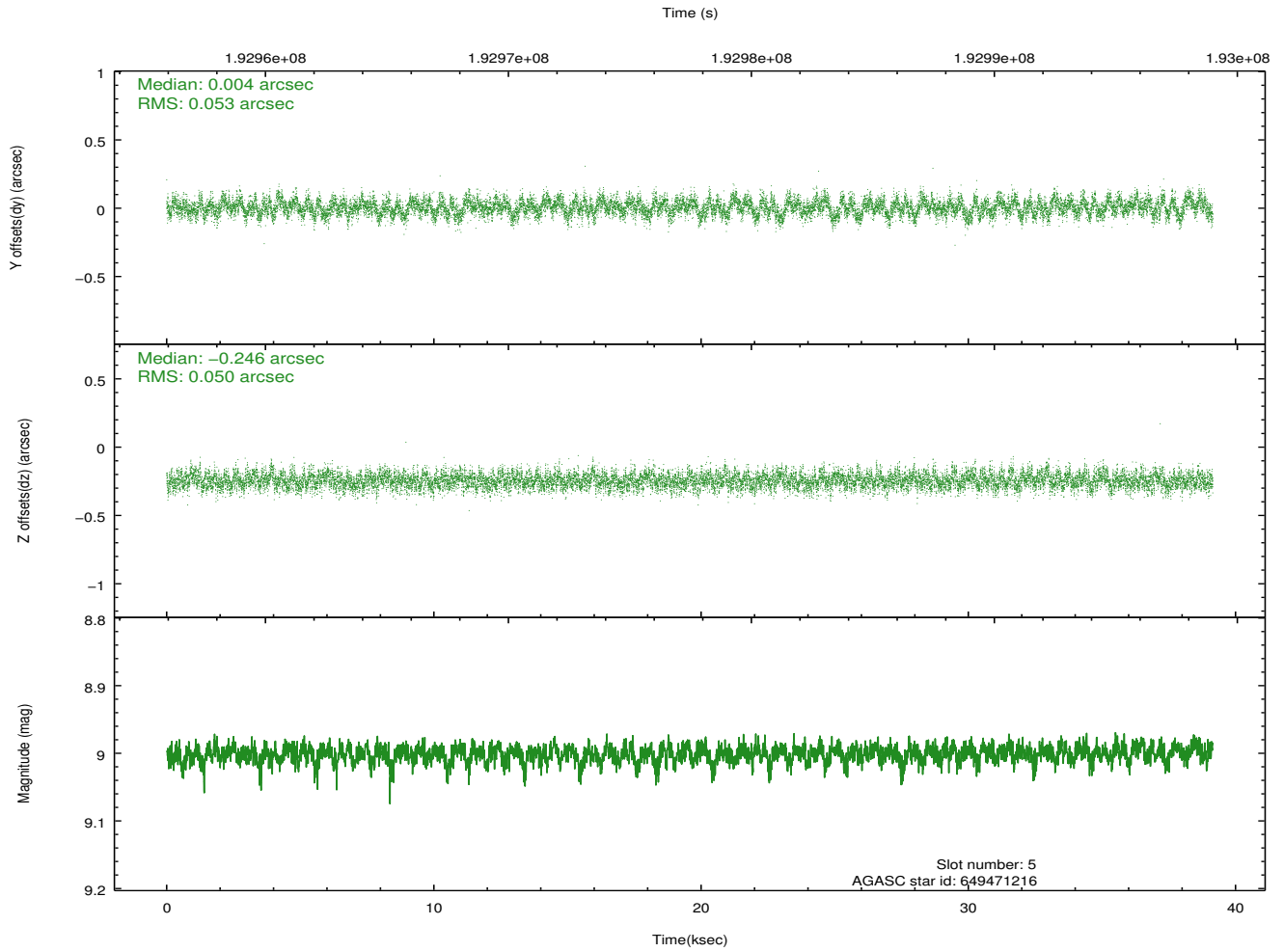
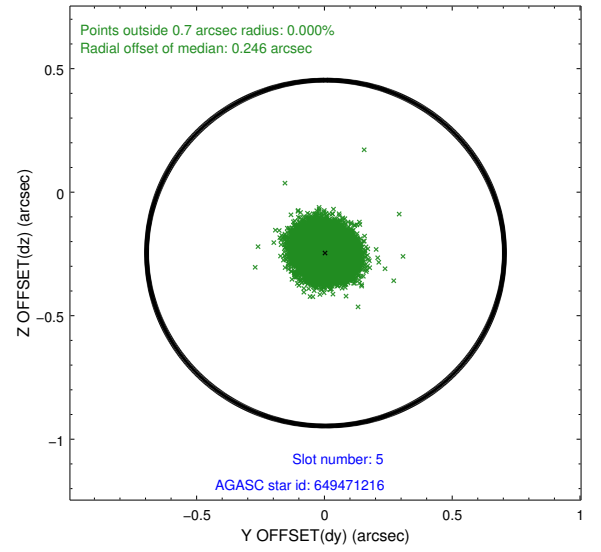
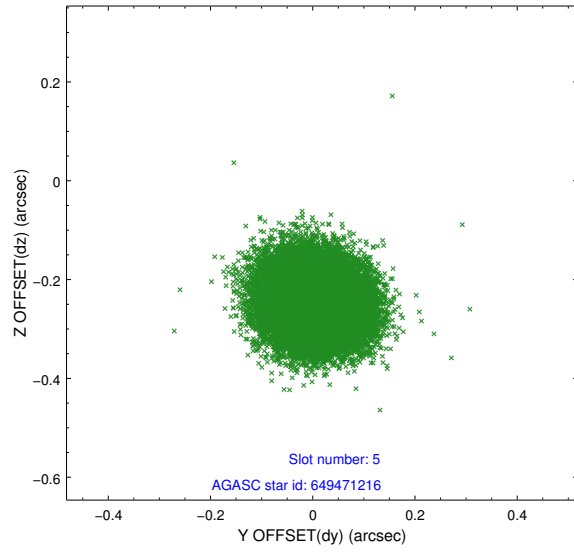
2.4.1 Slot 3



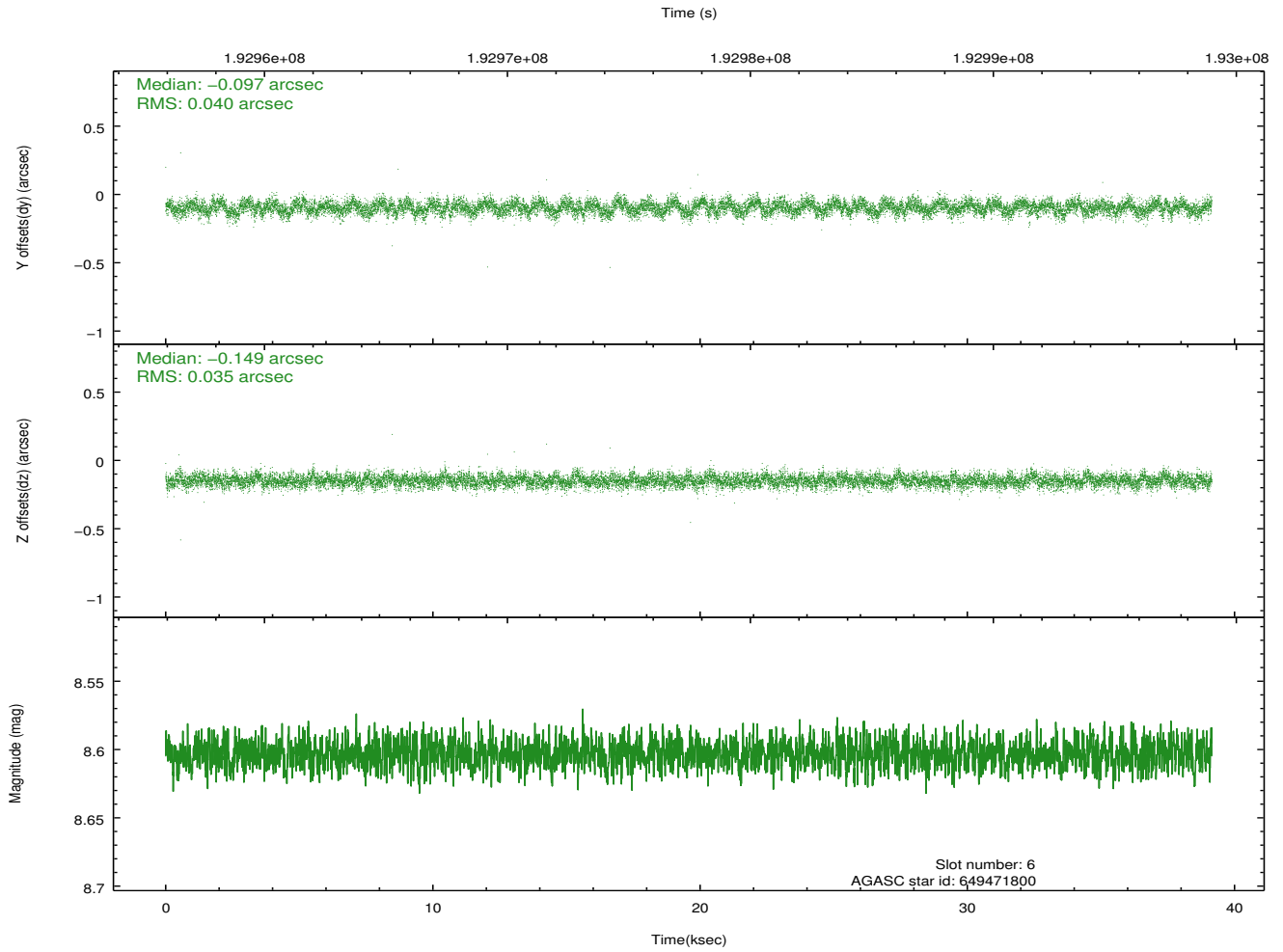
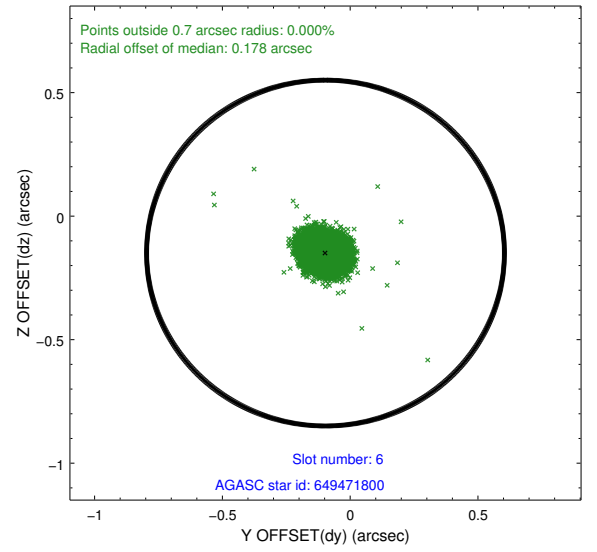
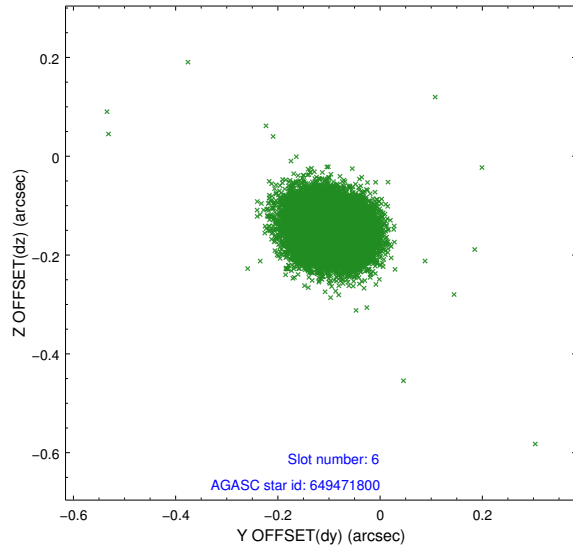
2.4.2 Slot 4



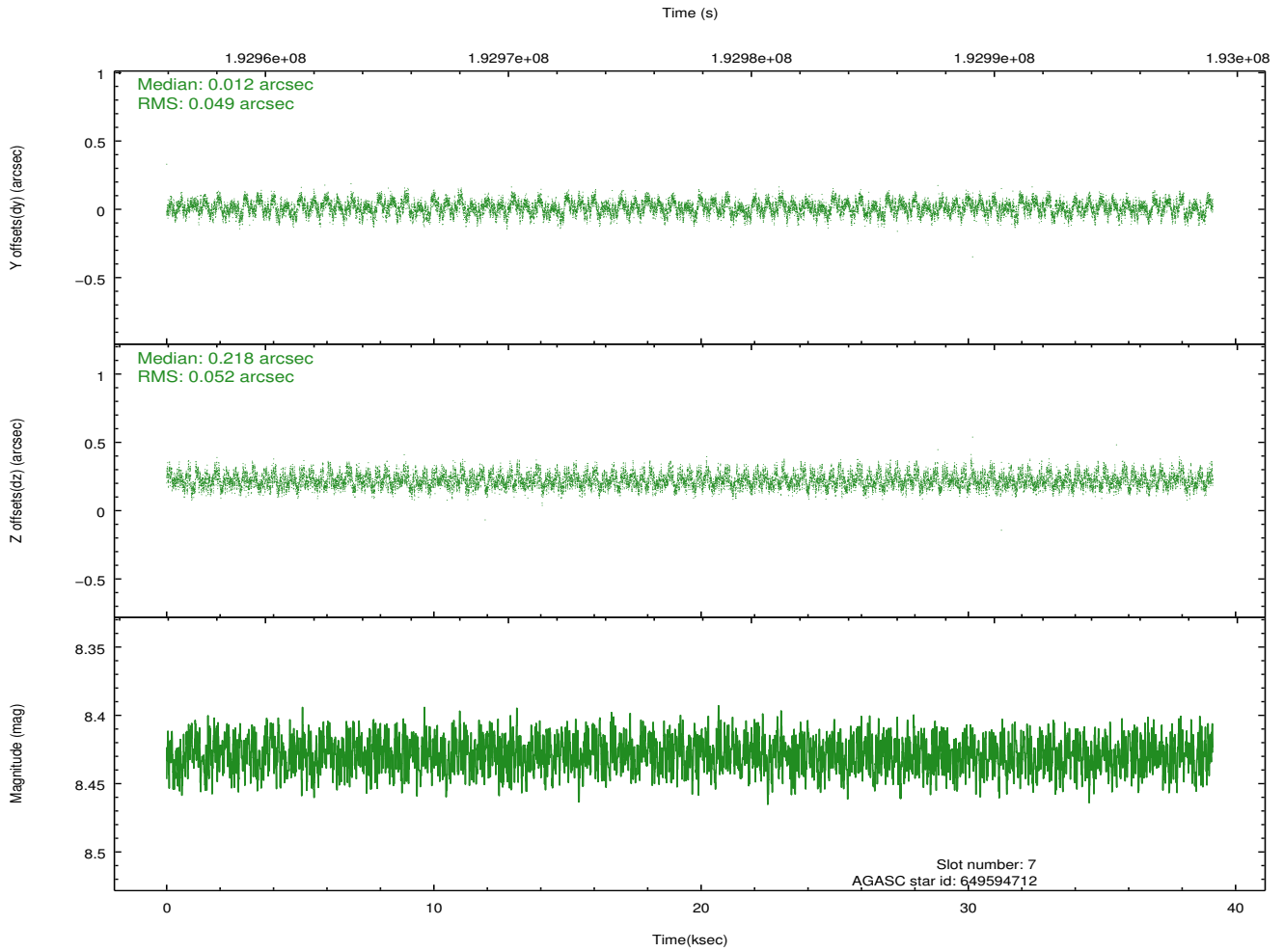
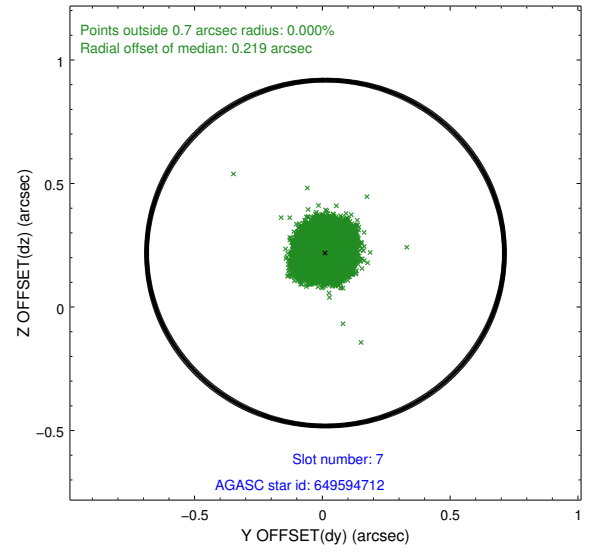
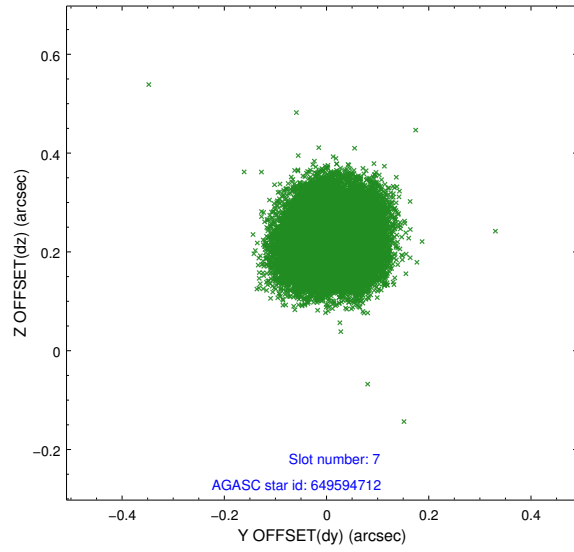
2.4.3 Slot 5



2.4.4 Slot 6

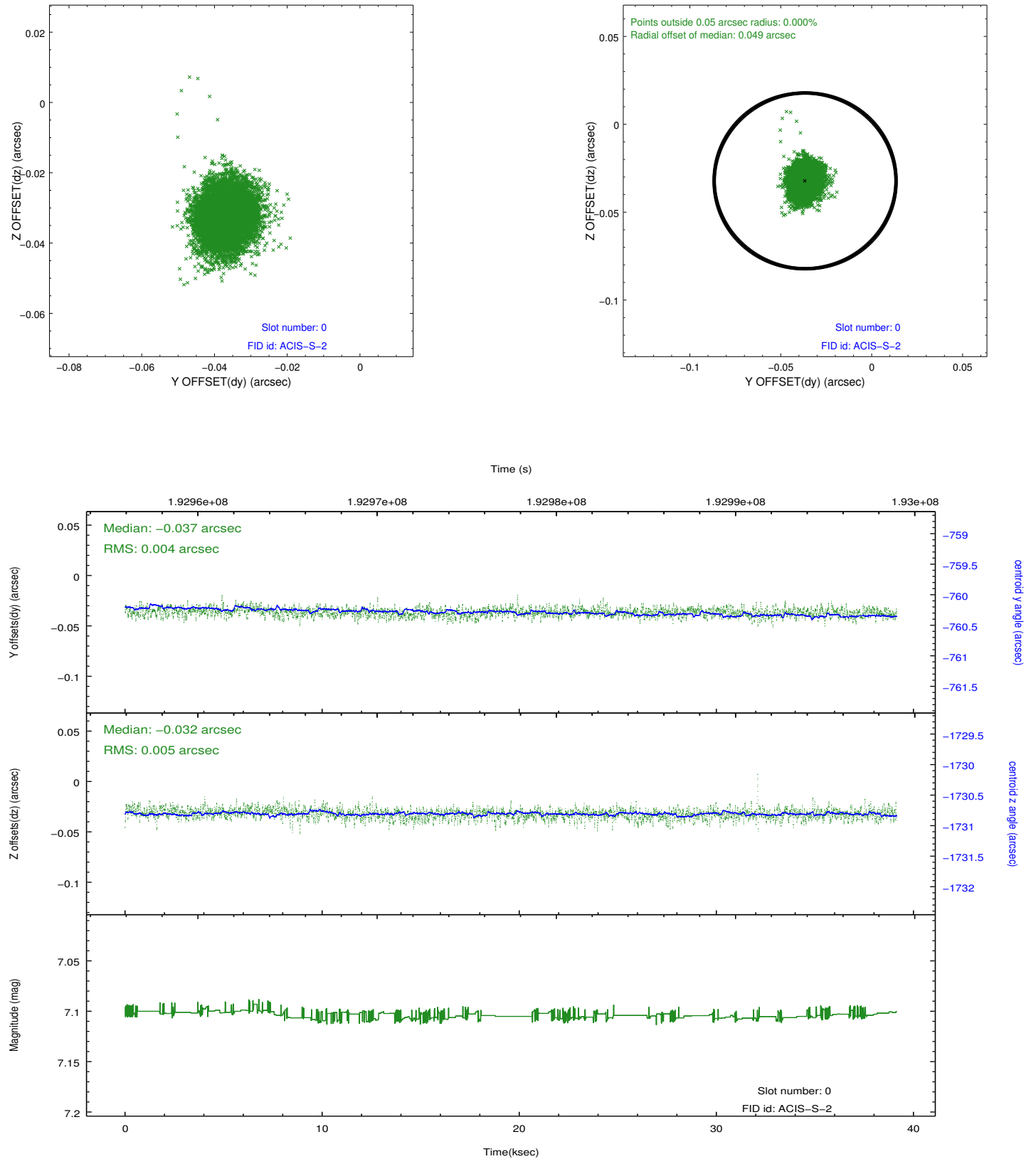


2.4.5 Slot 7

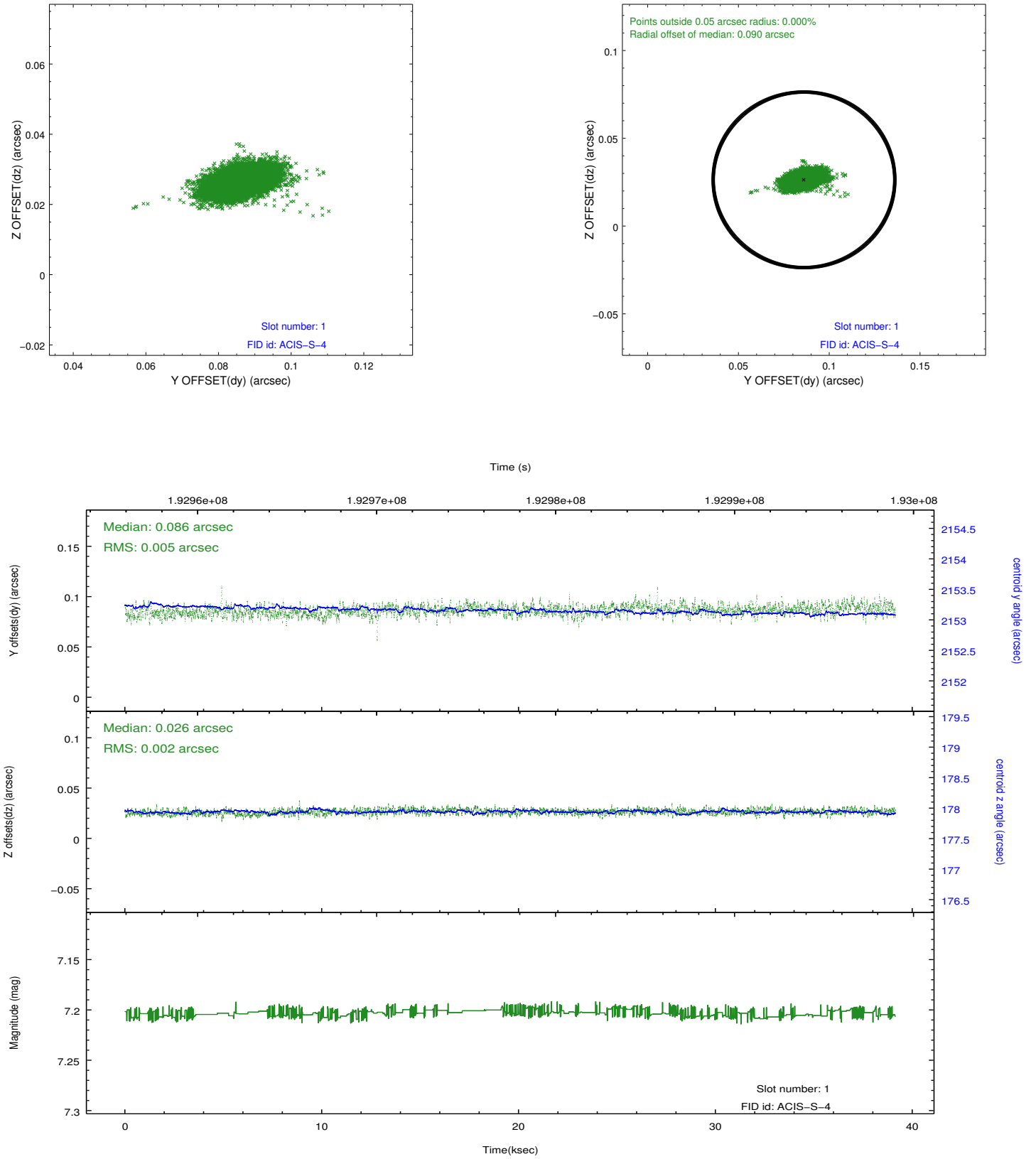


2.5 FID Slots

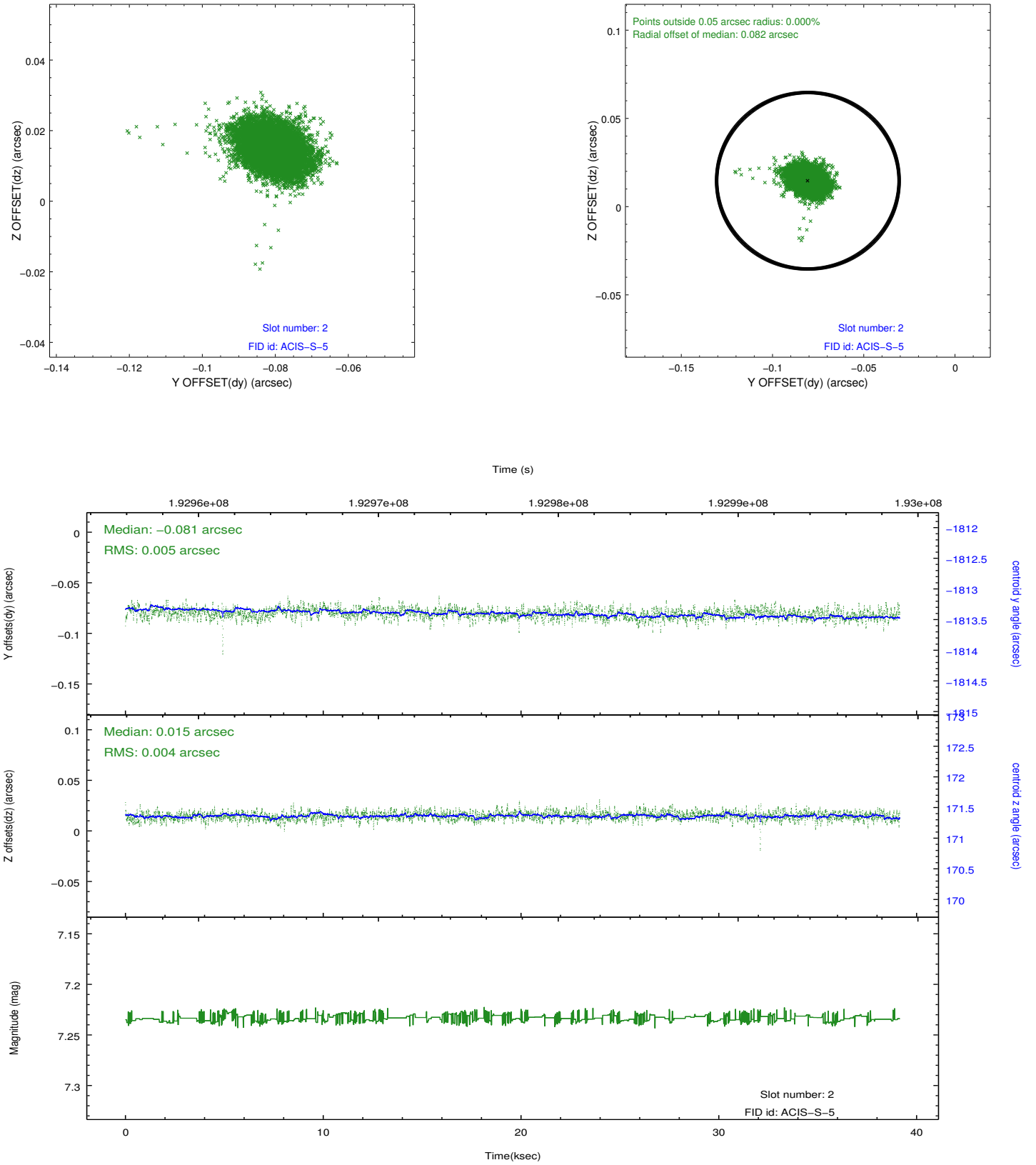
2.5.1 Slot 0



2.5.2 Slot 1



2.5.3 Slot 2



A Summary

A.1 Status

V&V Scientist	Jen Lauer
V&V Date (YYYY-MM-DD)	2012.12.11
V&V Edition	1
V&V Disposition and Status	OK
V&V Charge Time	38.607

A.2 Comments

Window preference not met. Joint Proposal: HST