

V&V Reference Report

L2 ASCDS Version : 7.6.7.1

Observation 4723 - L2 Version _e1
Chandra X-Ray Center

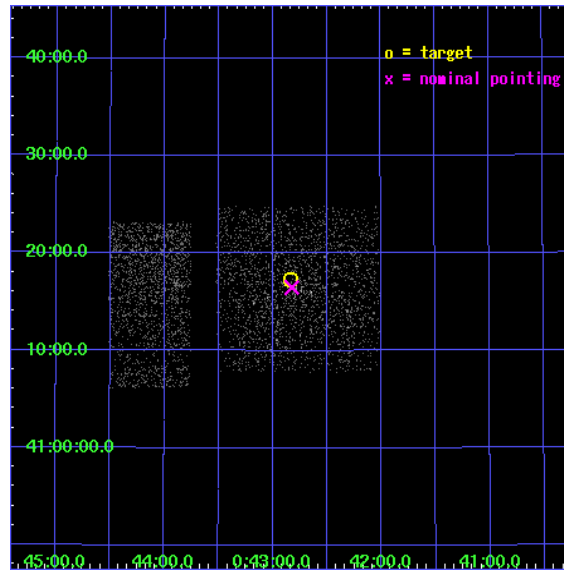
L2 Processing Date : Apr 8 2006

Contents

1	Front	2
2	OBI Primary	3
2.1	OBI	3
2.1.1	Images	3
2.1.2	Bias	3
2.1.3	Parameters	4
2.1.4	Events	4
2.2	Compared Parameters	5
2.3	Aspect	6
2.4	Star Slots	9
2.4.1	Slot 3	9
2.4.2	Slot 4	10
2.4.3	Slot 5	11
2.4.4	Slot 6	12
2.4.5	Slot 7	13
2.5	FID Slots	14
2.5.1	Slot 0	14
2.5.2	Slot 1	15
2.5.3	Slot 2	16
3	OBI Secondary	17
3.1	OBI	17
3.1.1	Images	17
3.1.2	Bias	17
3.1.3	Parameters	18
3.1.4	Events	18
4	Point Sources	19
A	Summary	20
A.1	Status	20
A.2	Comments	20

1 Front

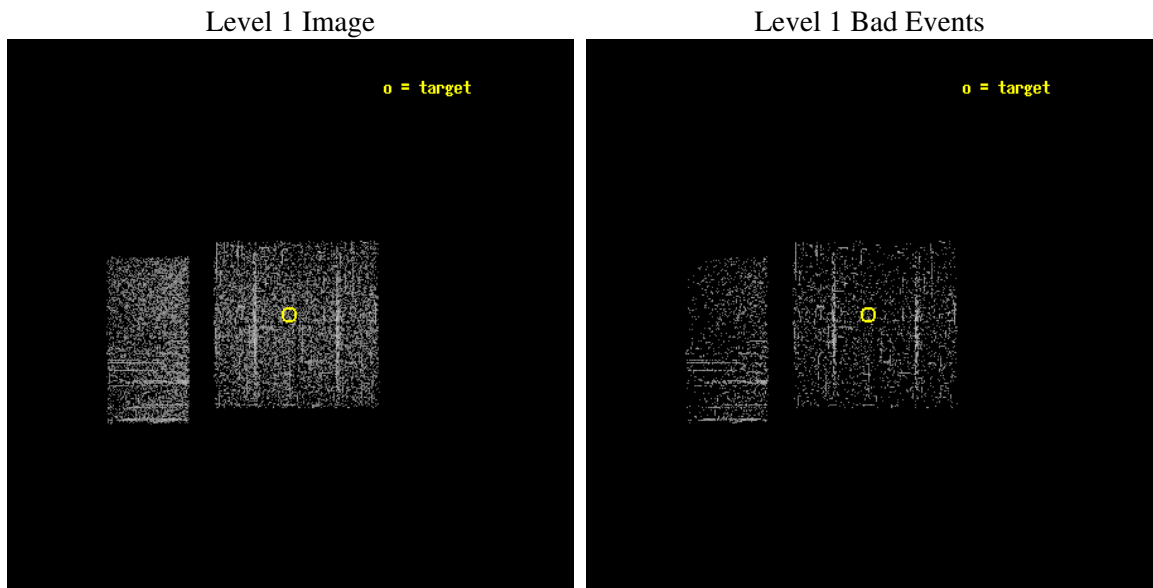
seq_num	600378
obs_id	4723
title	Black Hole X-ray Novae in M31
observer	Dr. MICHAEL GARCIA
object	M31-bulge
dtcycle	0
cycle	P
ra_targ	10.708333
dec_targ	41.2875
ra_nom	10.705940897466
dec_nom	41.27489609057
roll_nom	269.814174988
revision	2
ontime	960.46272039413
livetime	151.20000006204
ontime0	960.46272039413
ontime1	960.46272039413
ontime2	960.46272039413
ontime3	960.46272039413
ontime6	960.46272039413
ontime7	960.46272039413
l2events	4445



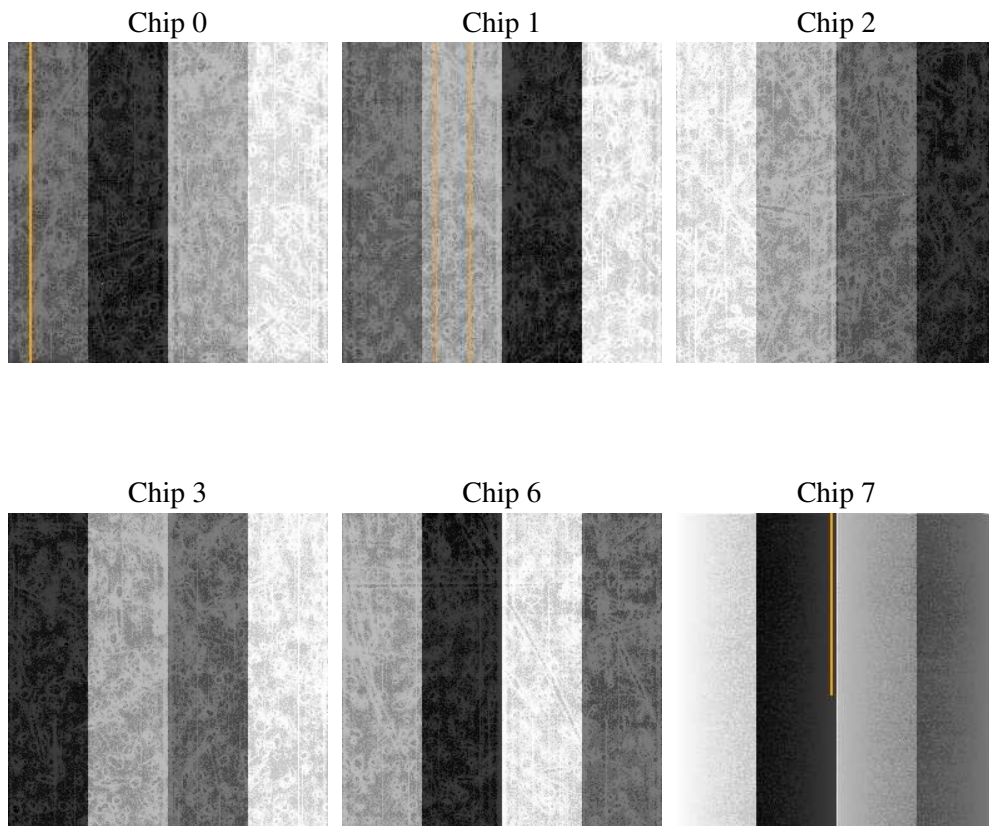
2 OBI Primary

2.1 OBI

2.1.1 Images



2.1.2 Bias



2.1.3 Parameters

obi_num	0
ascdsver	7.6.7.1
caldsver	3.2.1
date	2006-04-08T12:50:56
revision	2

sched_exp_time	4906.362000
ontime	979.51952040195
ontime0	979.51952040195
ontime1	979.51952040195
ontime2	979.51952040195
ontime3	979.51952040195
ontime6	979.51952040195
ontime7	979.51952040195
l1events	25972

2.1.4 Events

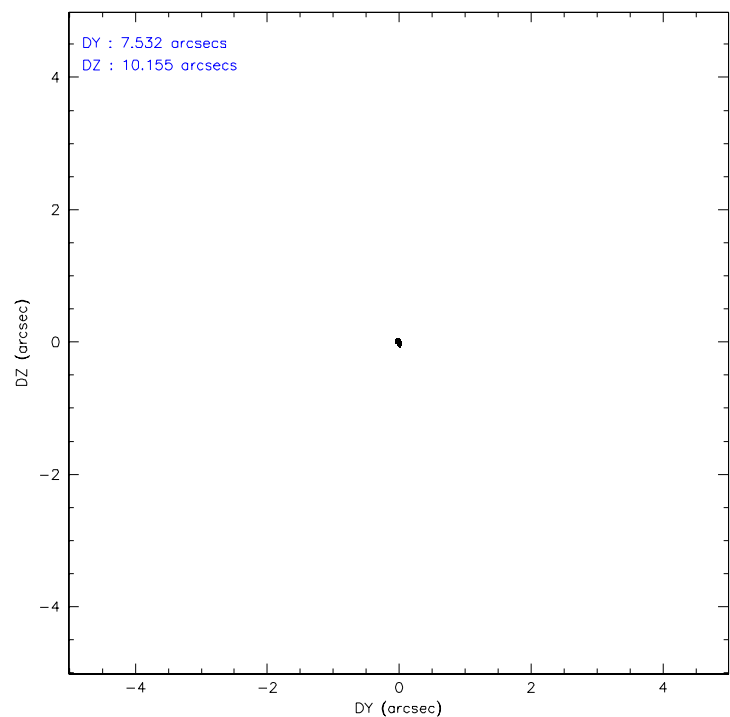
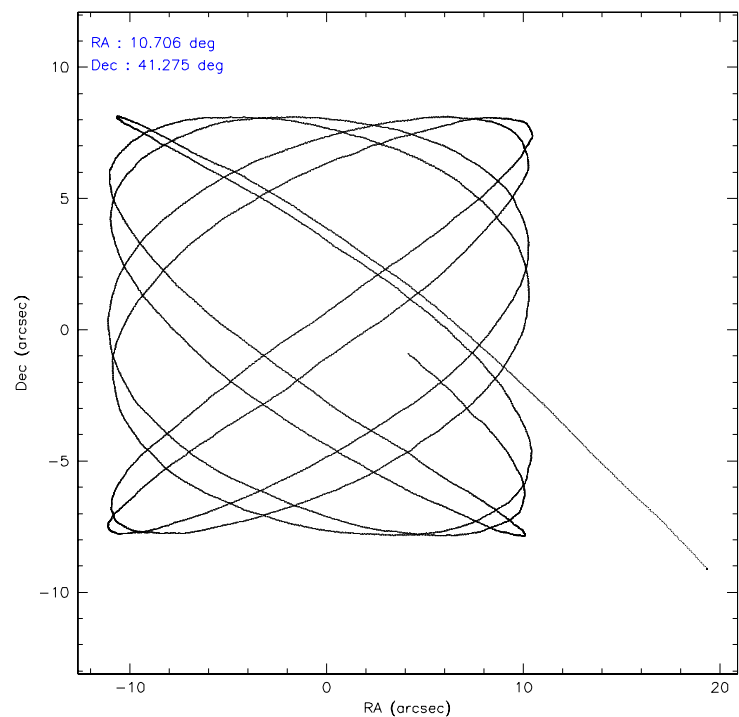
	ccd 0	ccd 1	ccd 2	ccd 3	ccd 6	ccd 7
level 1 events	4188	3864	4478	4402	4975	4065
rejected events	3341	3140	3677	3688	4270	2849
rejected %	79%	81%	82%	83%	85%	70%

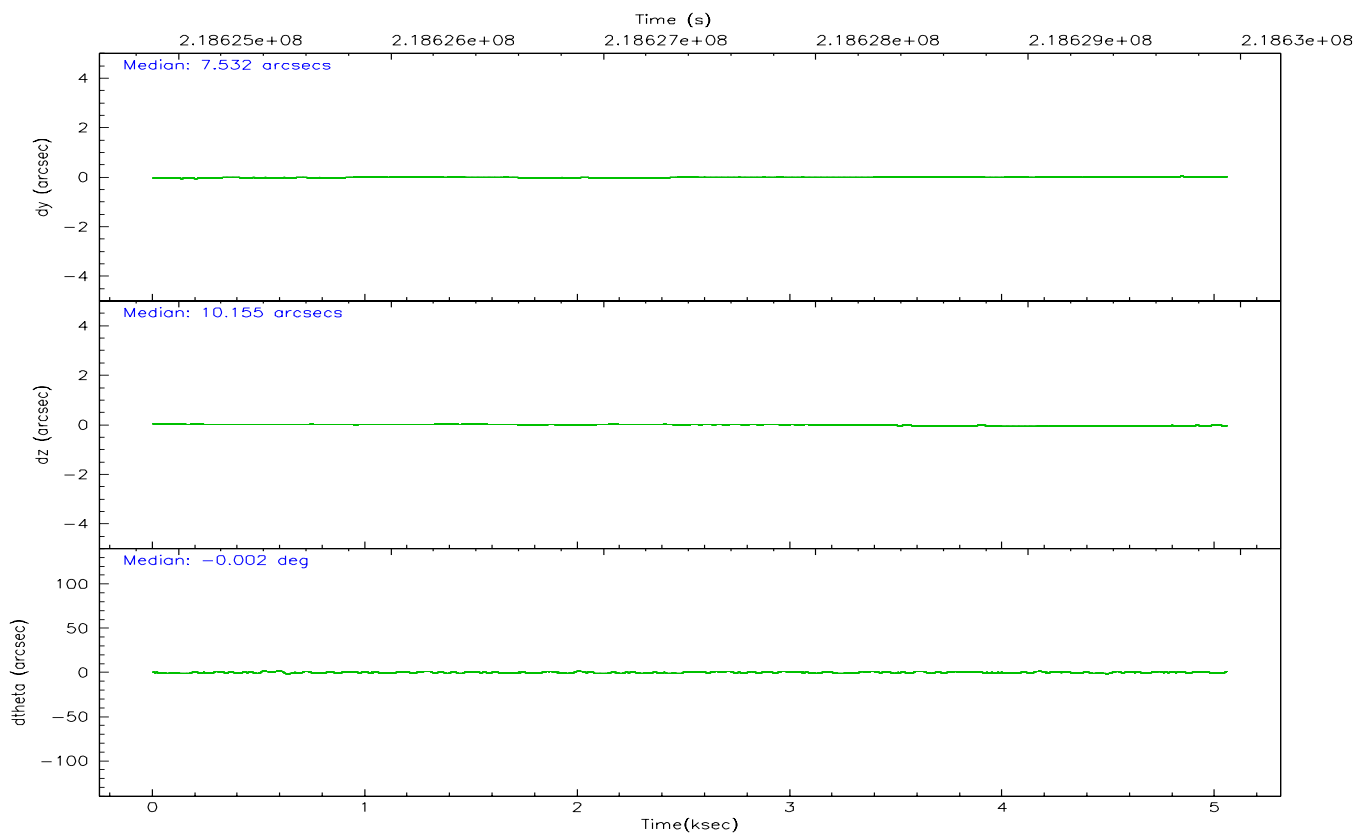
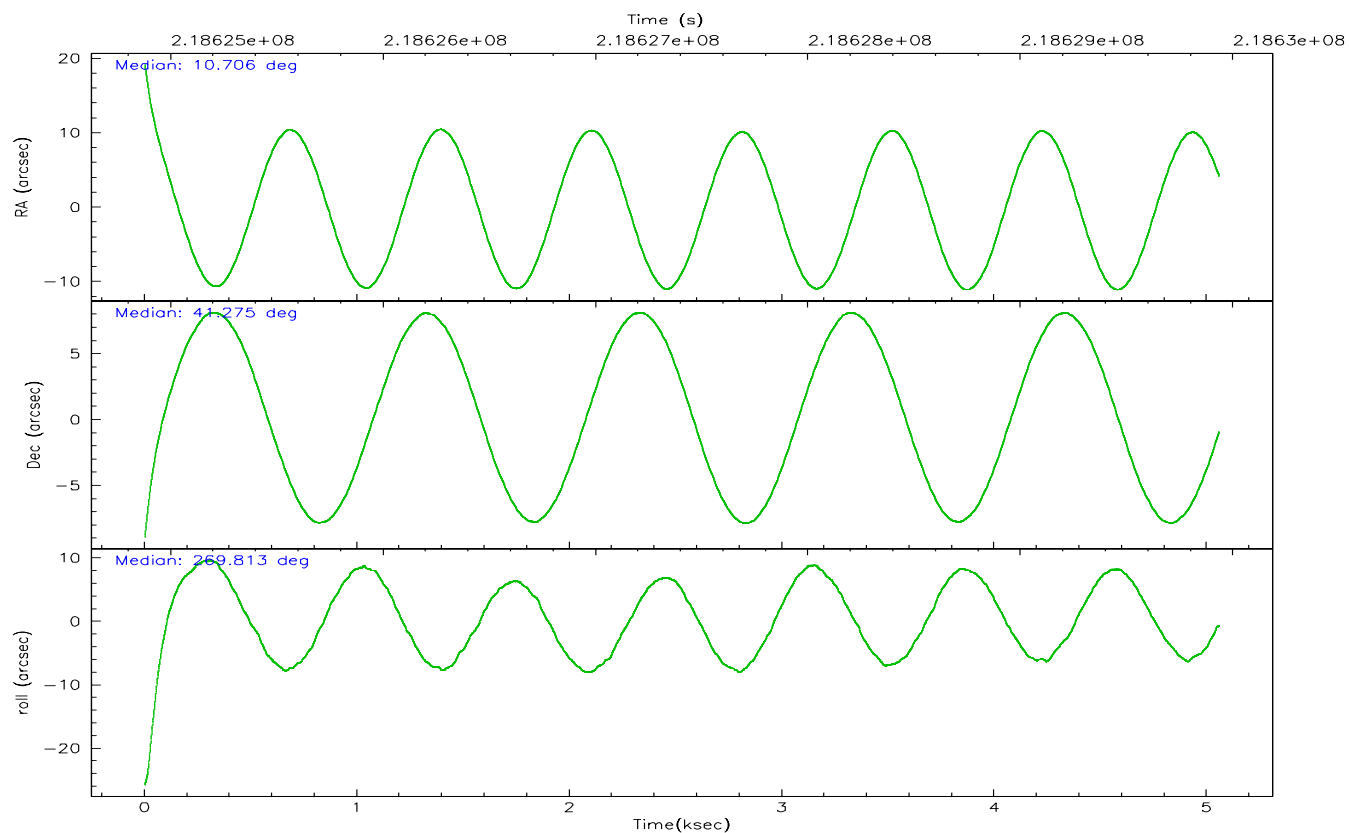
	ccd 0	ccd 1	ccd 2	ccd 3	ccd 6	ccd 7
grade 0 events	417	261	360	277	274	90
	9%	6%	8%	6%	5%	2%
grade 1 events	2	3	2	2	1	7
	0%	0%	0%	0%	0%	0%
grade 2 events	208	227	201	232	239	339
	4%	5%	4%	5%	4%	8%
grade 3 events	53	59	42	40	48	74
	1%	1%	0%	0%	0%	1%
grade 4 events	41	45	64	45	49	63
	0%	1%	1%	1%	0%	1%
grade 5 events	122	102	122	134	152	217
	2%	2%	2%	3%	3%	5%
grade 6 events	147	146	141	129	105	672
	3%	3%	3%	2%	2%	16%
grade 7 events	3198	3021	3546	3543	4107	2603
	76%	78%	79%	80%	82%	64%

2.2 Compared Parameters

Parameter	Planned	Actual	Parameter	Planned	Actual
Instrument	ACIS	ACIS	Obspar format version number	6	6
Detector	ACIS-012367	ACIS-012367	Obspar file type	PREDICTED	ACTUAL
Grating	NONE	NONE	Obspar update status	NONE	UPDATED
Data mode	FAINT	FAINT	On-chip summing requested	N	N
Observation mode	POINTING	POINTING	Subarray requested	NONE	NONE
Pointing RA	10.687588	10.70594089746568	Alternating exposures requested	Y	Y
Pointing Dec	41.298605	41.27489609057049	Primary exposure time	0.600000	0.6
Pointing Roll	269.617640	269.814174988004	Secondary exposure time	0.000000	3.2
Window start time	218073664.184000	218073664.184000	Duty cycle	5	5
Window stop time	218678464.184000	218678464.184000			
SIM focus pos (mm)	-0.782348	-0.7809083437167272			
SIM defocus (mm)	0	0.001439871863259334			
SIM translation stage pos (mm)	-233.592463	-233.5874344608287			
SIM translation stage offset (mm)	0	-0.005018542100998502			
Observation start time	218625034.184000	218623894.34591			
Observation start date	2004-12-05T09:09:30	2004-12-05T08:51:34			
Observation end time	218629940.184000	218630179.13369			
Observation end date	2004-12-05T10:31:16	2004-12-05T10:36:19			
Read mode	TIMED	TIMED			

2.3 Aspect



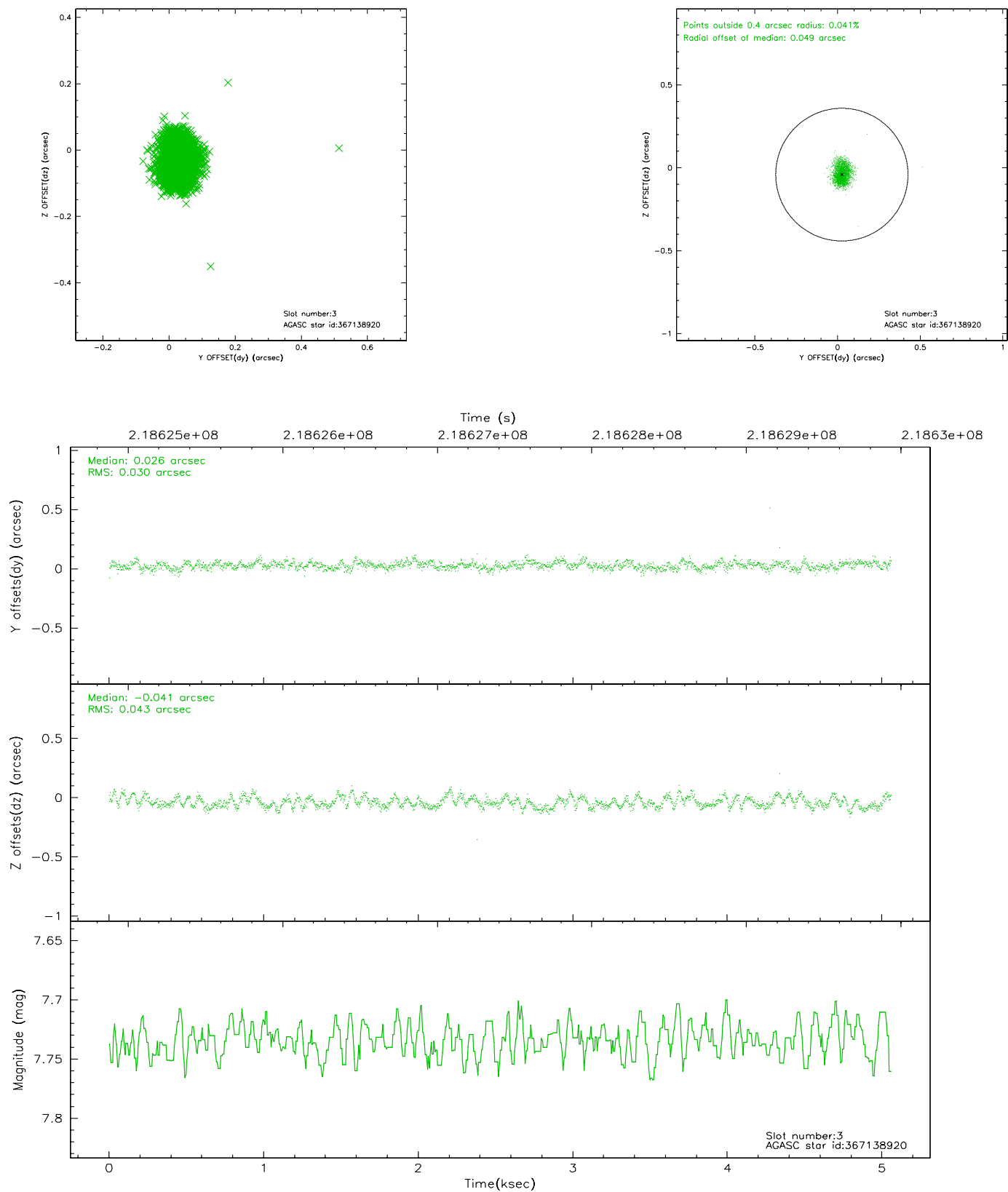


Slot Statistics

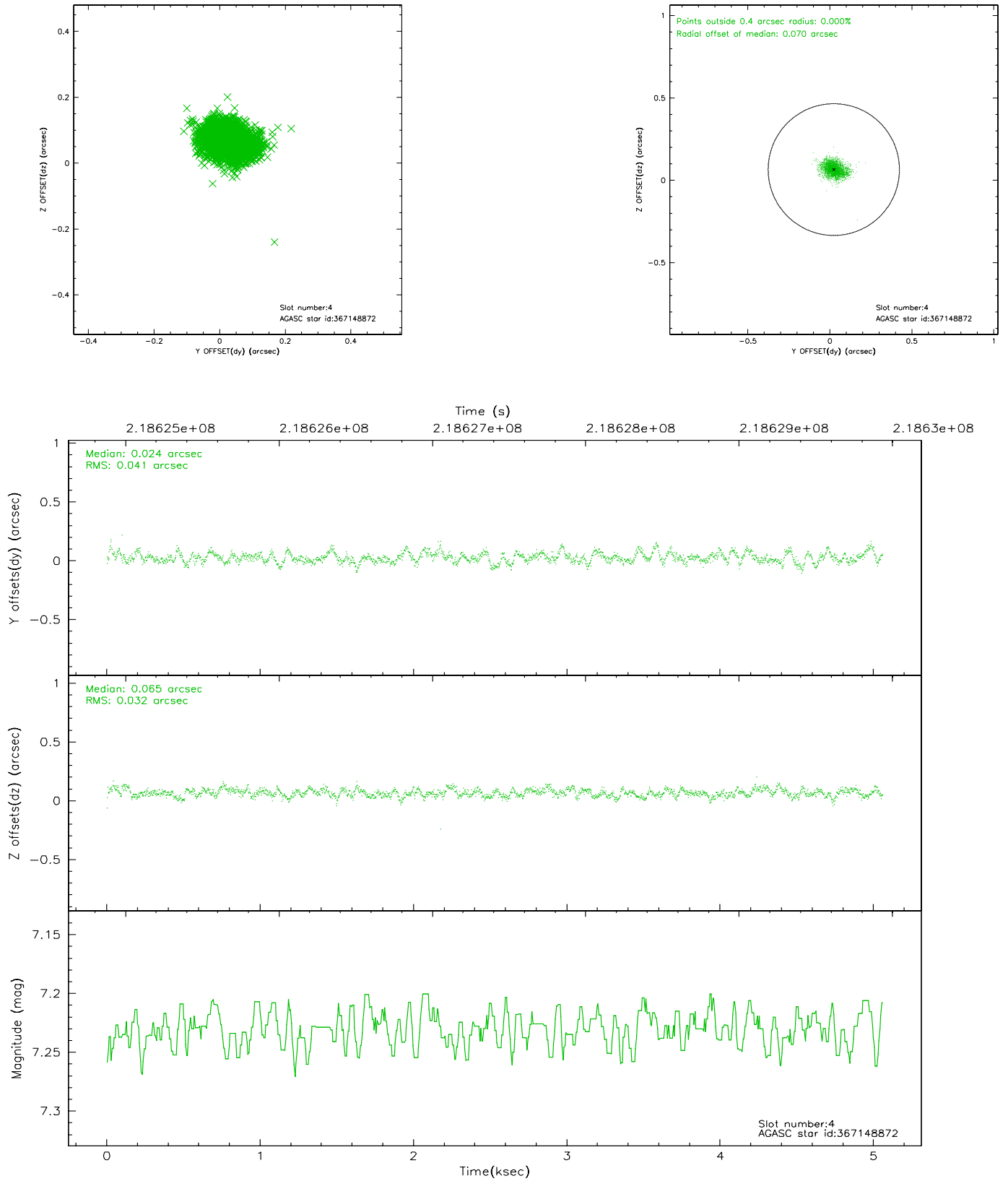
slot	status	id	mag	n_pts	med_dy	med_dz	dr1	dr2	ra	dec	mean_y	mean_z
0	FID	ACIS-I-1	7.24	1234	-0.036	0.042	0.008	0.014	0.000000	0.000000	932.10	-833.59
1	FID	ACIS-I-4	7.19	1234	0.110	0.012	0.007	0.011	0.000000	0.000000	2152.97	1065.58
2	FID	ACIS-I-5	7.22	1233	-0.173	0.017	0.006	0.011	0.000000	0.000000	-1814.48	1064.83
3	GUIDE	367138920	7.73	2468	0.026	-0.041	0.055	0.089	11.513485	40.808909	1737.58	2262.39
4	GUIDE	367148872	7.23	2468	0.024	0.065	0.055	0.091	10.505940	40.688258	2201.13	-480.40
5	GUIDE	367657896	9.01	2468	0.037	0.009	0.073	0.118	11.197765	41.313576	-66.19	1378.73
6	GUIDE	367663272	9.29	2467	-0.073	0.044	0.077	0.131	10.656279	41.699429	-1442.22	-93.79
7	GUIDE	367674552	8.85	2467	-0.018	-0.078	0.078	0.124	11.016238	41.570845	-988.13	878.33

2.4 Star Slots

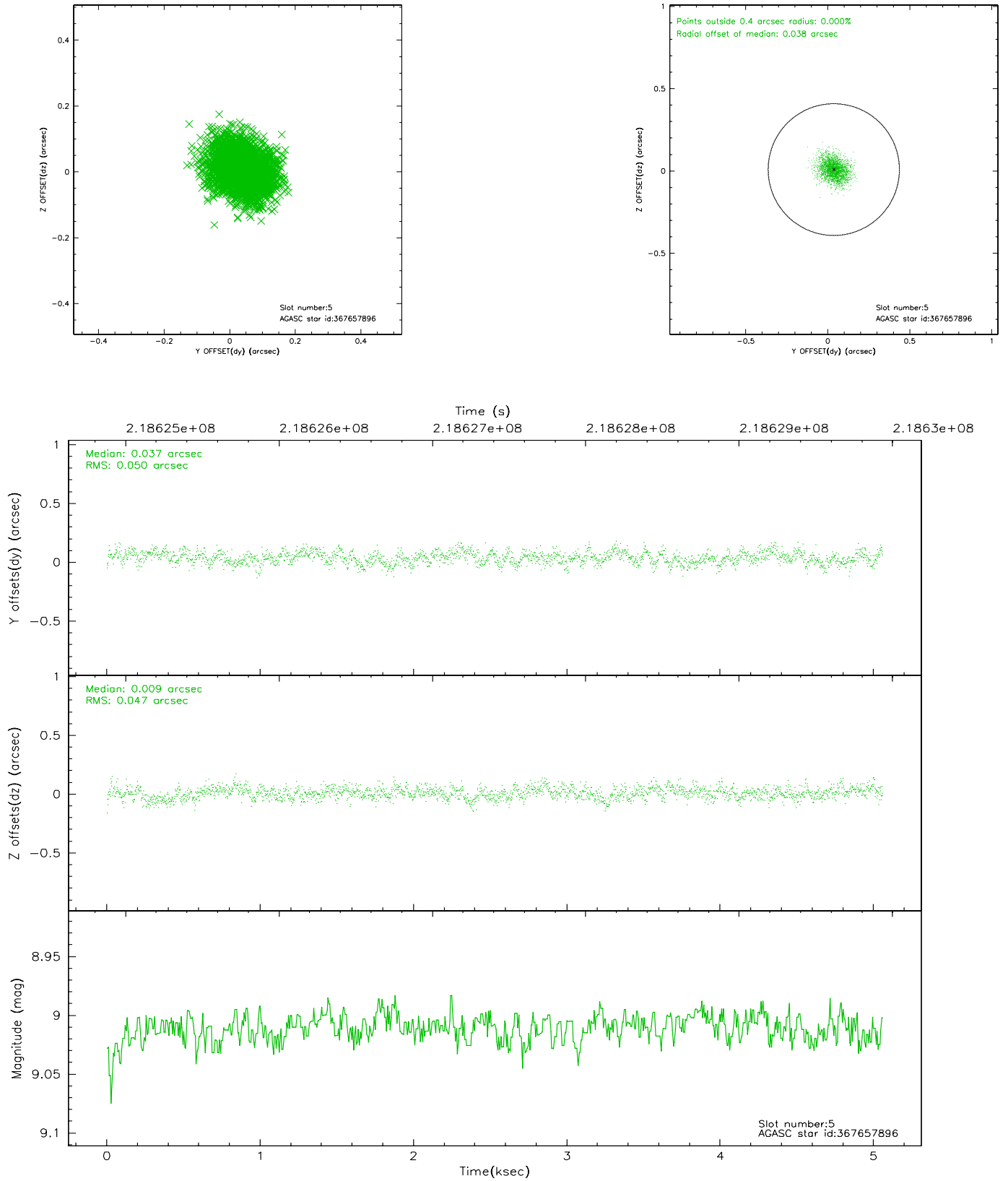
2.4.1 Slot 3



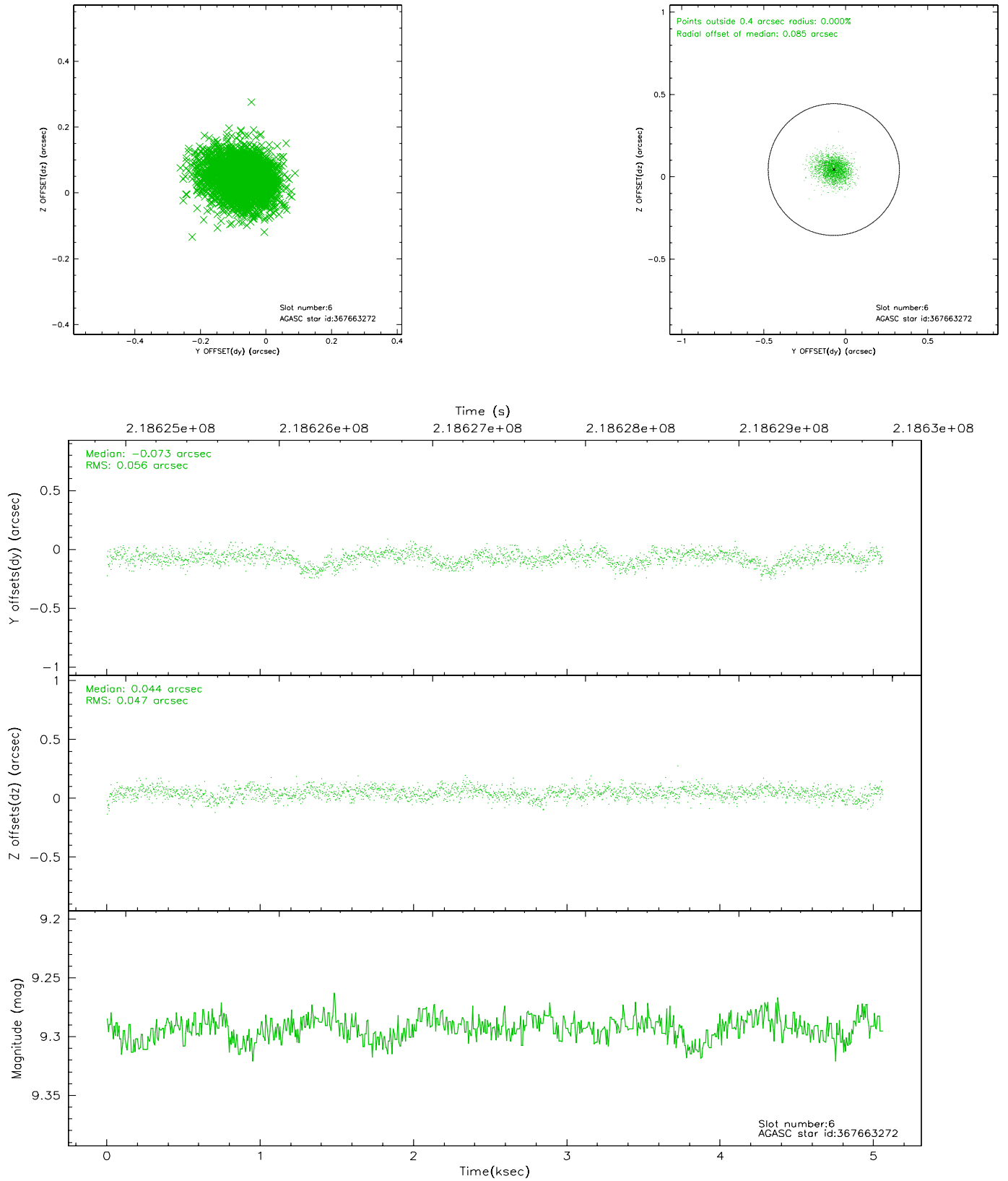
2.4.2 Slot 4



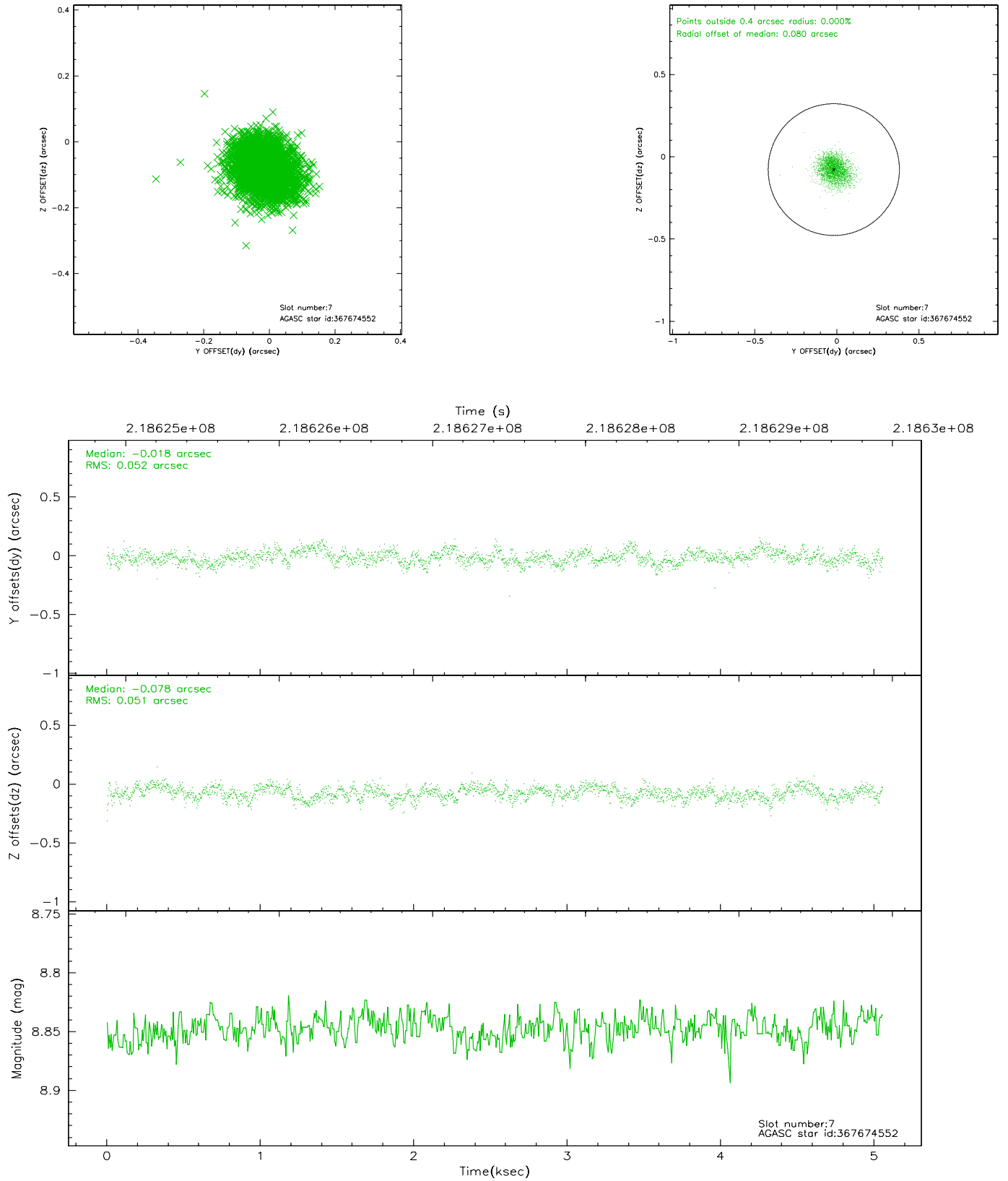
2.4.3 Slot 5



2.4.4 Slot 6

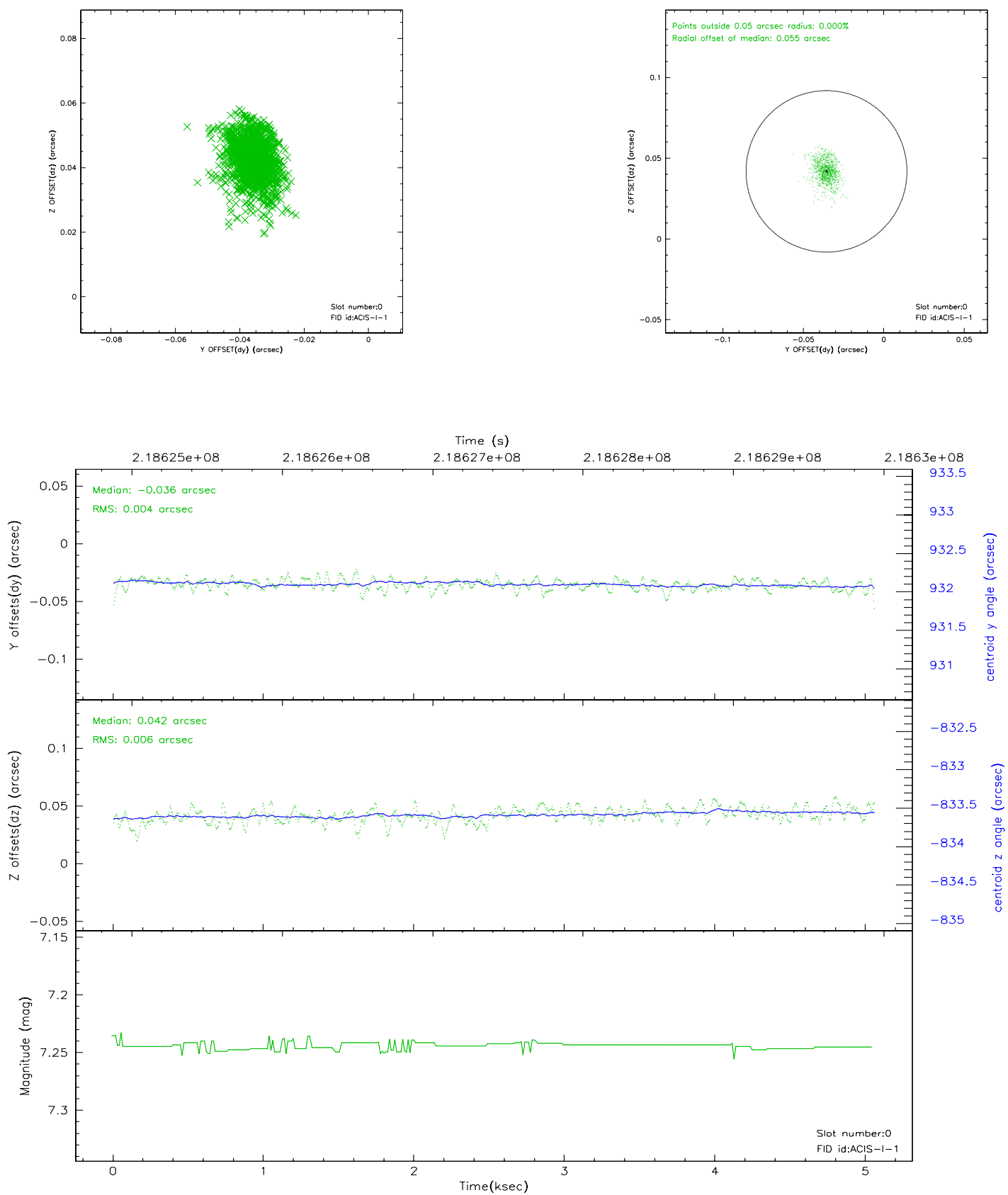


2.4.5 Slot 7

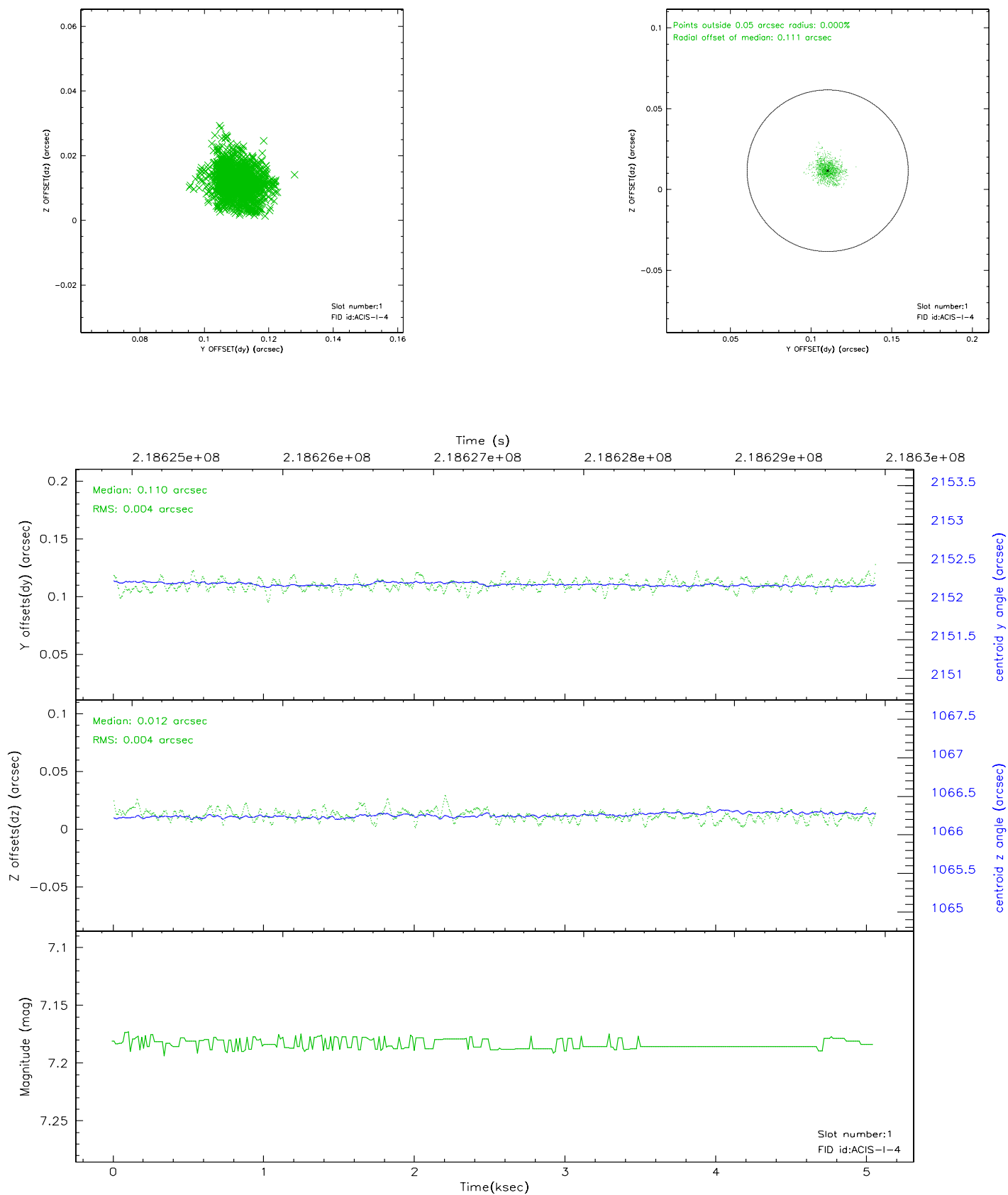


2.5 FID Slots

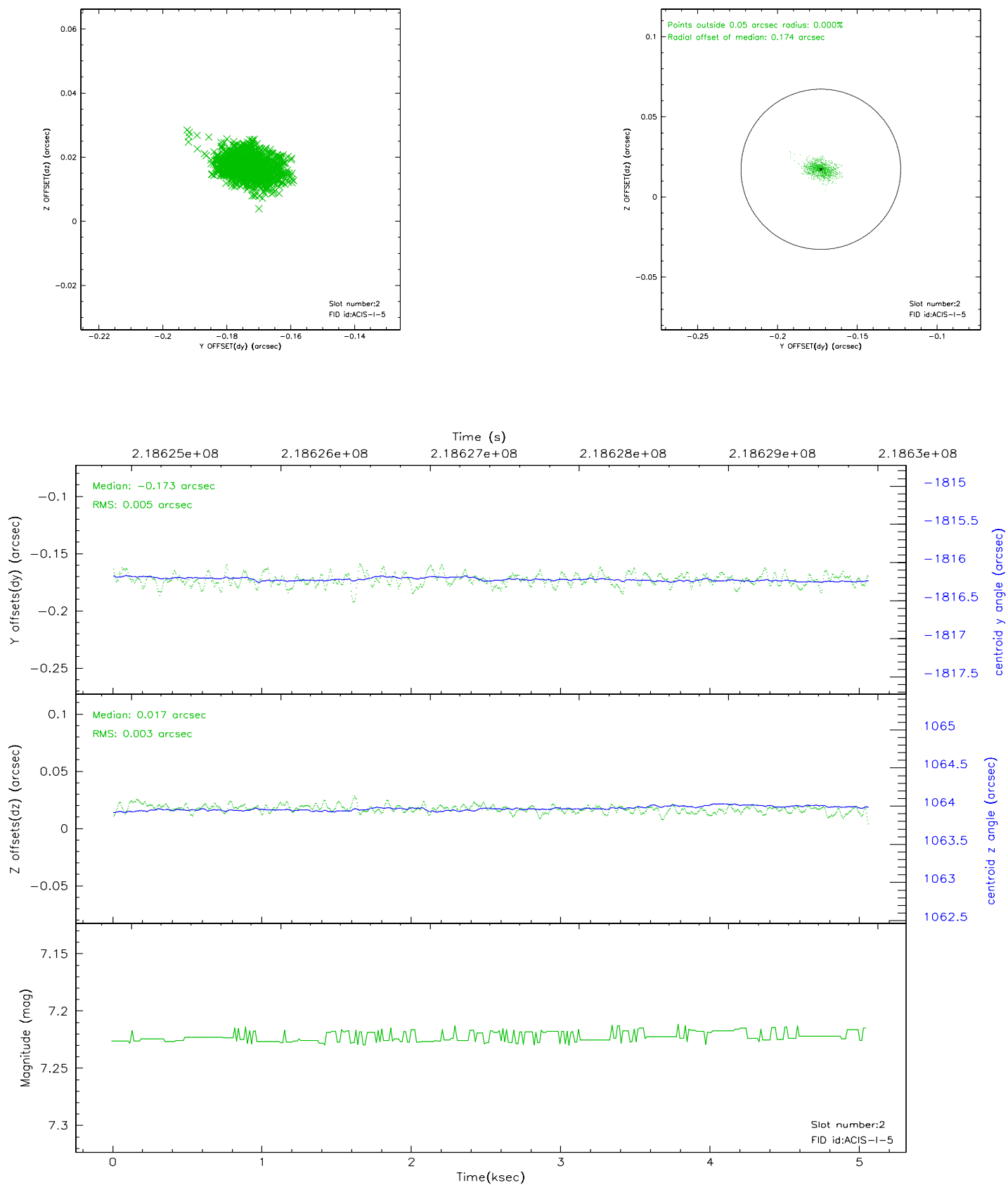
2.5.1 Slot 0



2.5.2 Slot 1



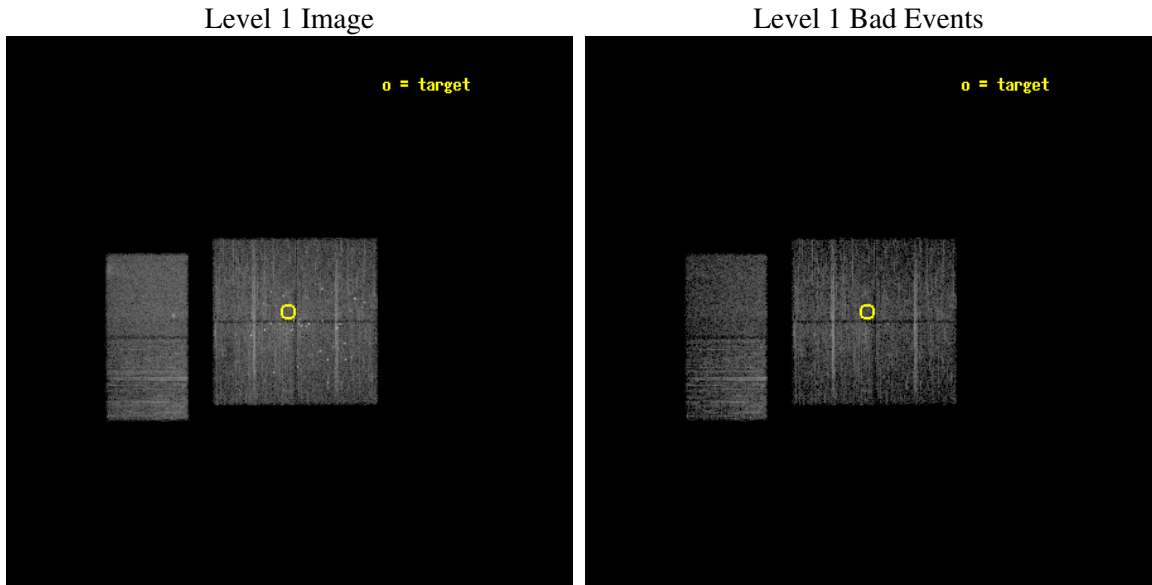
2.5.3 Slot 2



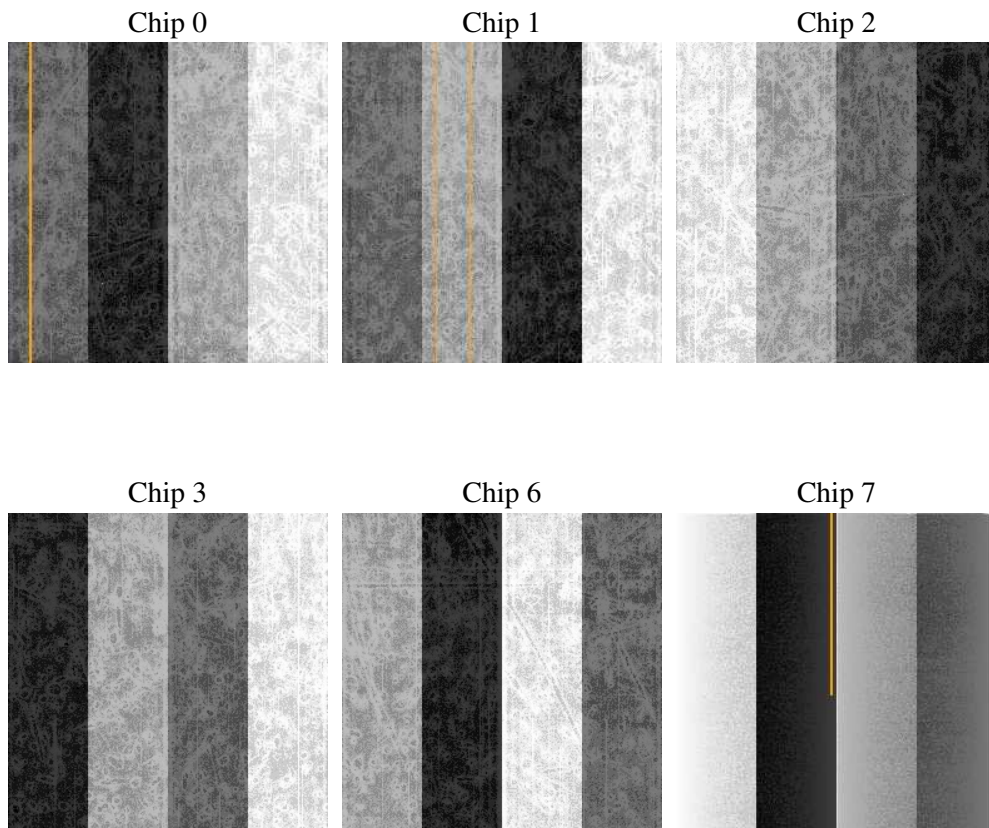
3 OBI Secondary

3.1 OBI

3.1.1 Images



3.1.2 Bias



3.1.3 Parameters

obi_num	0
ascdsver	7.6.7.1
caldbver	3.2.1
date	2006-04-08T12:57:43
revision	2

sched_exp_time	4906.362000
ontime	4161.461058408
ontime0	4161.461078465
ontime1	4161.4612874091
ontime2	4161.4614267051
ontime3	4161.461058408
ontime6	4161.4610386491
ontime7	4161.4613673389
l1events	295990

3.1.4 Events

	ccd 0	ccd 1	ccd 2	ccd 3	ccd 6	ccd 7
level 1 events	46151	45668	50789	50019	50154	53209
rejected events	29176	30873	35946	35585	37013	29480
rejected %	63%	67%	70%	71%	73%	55%

	ccd 0	ccd 1	ccd 2	ccd 3	ccd 6	ccd 7
grade 0 events	8791	6037	7972	6569	5517	1713
	19%	13%	15%	13%	11%	3%
grade 1 events	174	41	89	48	26	47
	0%	0%	0%	0%	0%	0%
grade 2 events	4484	5170	3619	4671	4845	5885
	9%	11%	7%	9%	9%	11%
grade 3 events	644	569	518	495	473	1317
	1%	1%	1%	0%	0%	2%
grade 4 events	706	508	705	549	443	1335
	1%	1%	1%	1%	0%	2%
grade 5 events	1253	1383	1270	1441	1456	3033
	2%	3%	2%	2%	2%	5%
grade 6 events	2583	2726	2206	2331	2034	13845
	5%	5%	4%	4%	4%	26%
grade 7 events	27516	29234	34410	33915	35360	26034
	59%	64%	67%	67%	70%	48%

4 Point Sources

A Summary

A.1 Status

V&V Scientist	Jen Lauer
V&V Date (YYYY-MM-DD)	2006.04.10
V&V Edition	1
V&V Disposition and Status	OK
V&V Charge Time	5.047217

A.2 Comments