

V&V Reference Report

L2 ASCDS Version : 7.6.7.1

Observation 4720 - L2 Version _e1
Chandra X-Ray Center

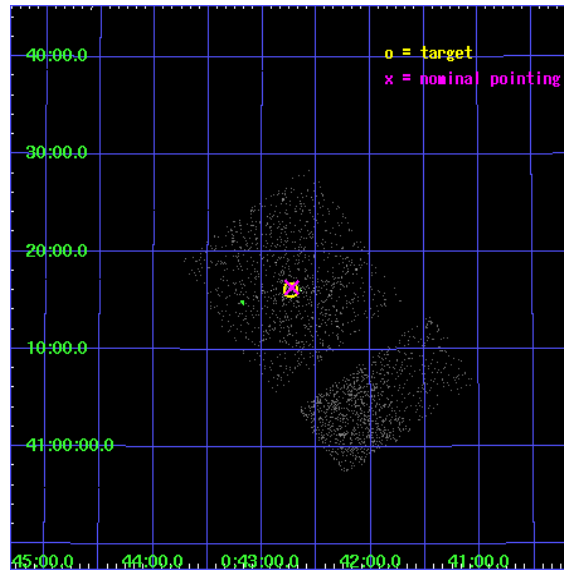
L2 Processing Date : Apr 19 2006

Contents

1	Front	2
2	OBI Primary	3
2.1	OBI	3
2.1.1	Images	3
2.1.2	Bias	3
2.1.3	Parameters	4
2.1.4	Events	4
2.2	Compared Parameters	5
2.3	Aspect	6
2.4	Star Slots	9
2.4.1	Slot 3	9
2.4.2	Slot 4	10
2.4.3	Slot 5	11
2.4.4	Slot 6	12
2.4.5	Slot 7	13
2.5	FID Slots	14
2.5.1	Slot 0	14
2.5.2	Slot 1	15
2.5.3	Slot 2	16
3	OBI Secondary	17
3.1	OBI	17
3.1.1	Images	17
3.1.2	Bias	17
3.1.3	Parameters	18
3.1.4	Events	18
4	Point Sources	19
A	Summary	20
A.1	Status	20
A.2	Comments	20

1 Front

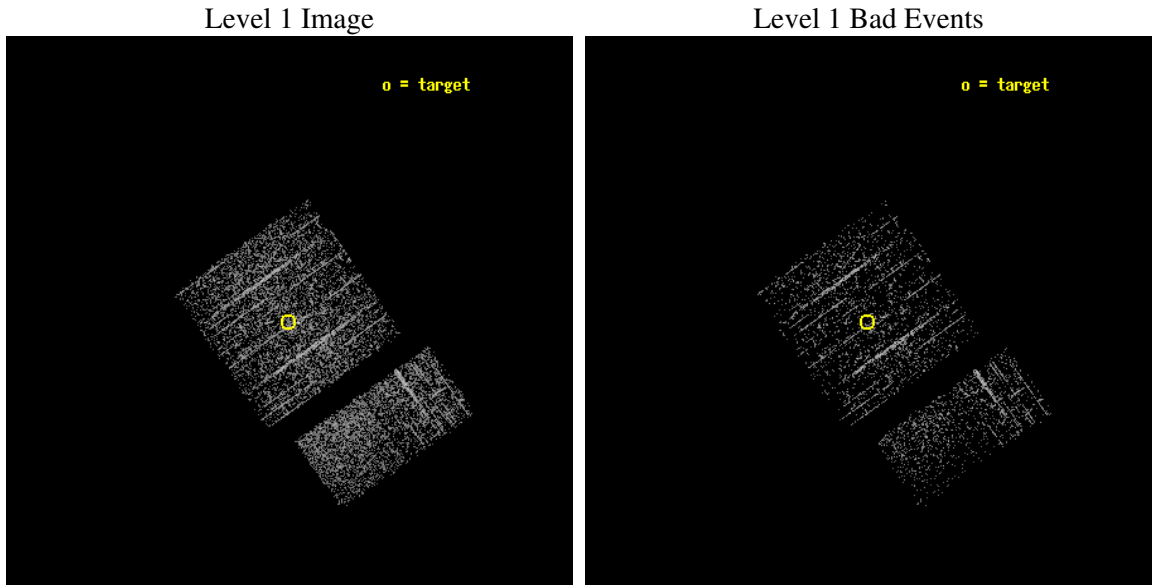
seq_num	600375
obs_id	4720
title	Black Hole X-ray Novae in M31
observer	Dr. MICHAEL GARCIA
object	M31-bulge
dtcycle	0
cycle	P
ra_targ	10.684583
dec_targ	41.269
ra_nom	10.681386544316
dec_nom	41.272958012416
roll_nom	144.79806877096
revision	2
ontime	975.56156343222
livetime	153.57692216409
ontime0	975.43844345212
ontime1	975.47948342562
ontime2	975.52052342892
ontime3	975.56156343222
ontime6	975.64364343882
ontime7	975.60260343552
l2events	2677



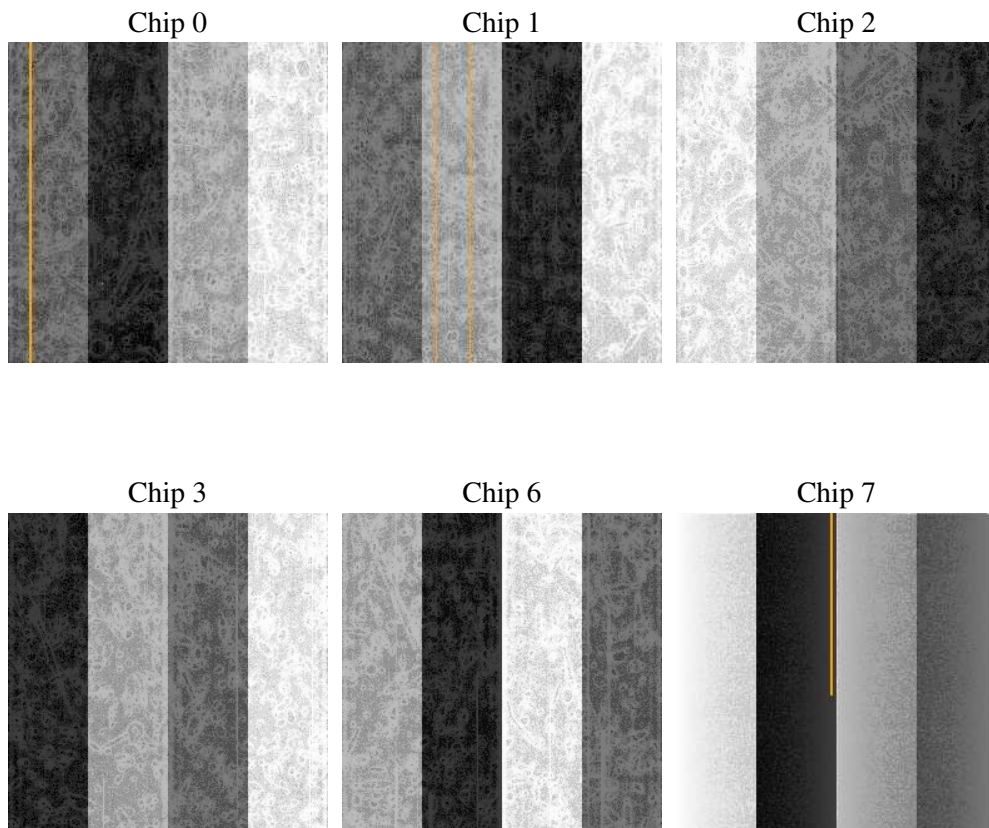
2 OBI Primary

2.1 OBI

2.1.1 Images



2.1.2 Bias



2.1.3 Parameters

obi_num	1
ascdsver	7.6.7.1
caldsver	3.2.1
date	2006-04-19T07:27:50
revision	2

sched_exp_time	5000.000000
ontime	1105.2944004536
ontime0	1105.2944004536
ontime1	1105.2944004536
ontime2	1105.2944004536
ontime3	1105.2944004536
ontime6	1105.2944004536
ontime7	1105.2944004536
llevents	25466

2.1.4 Events

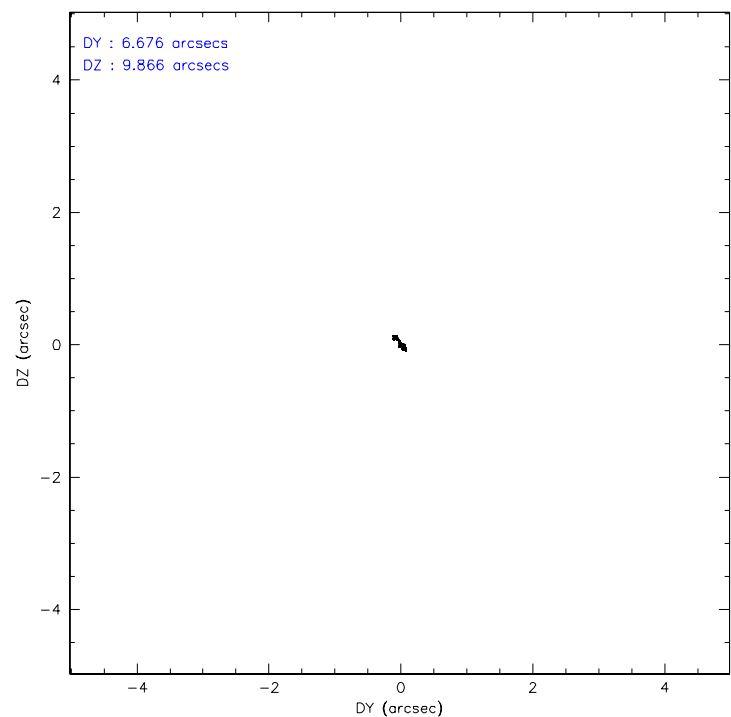
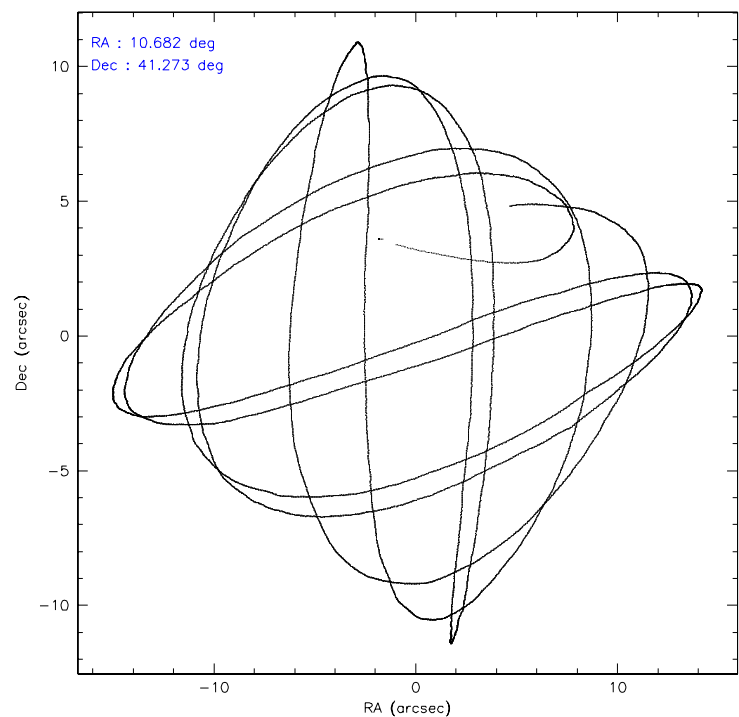
	ccd 0	ccd 1	ccd 2	ccd 3	ccd 6	ccd 7
level 1 events	3812	4167	4446	4136	4585	4320
rejected events	3452	3759	3918	3709	4265	3332
rejected %	90%	90%	88%	89%	93%	77%

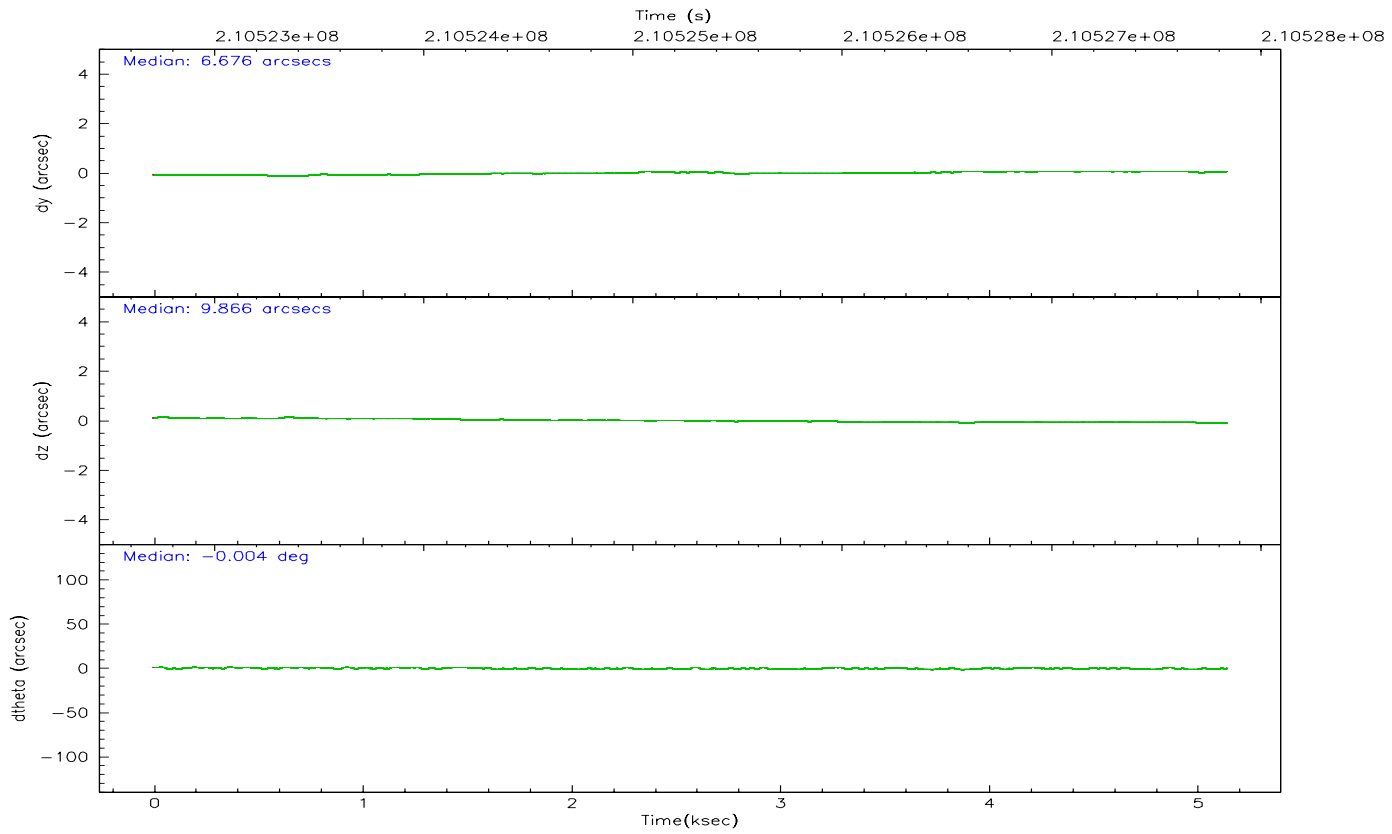
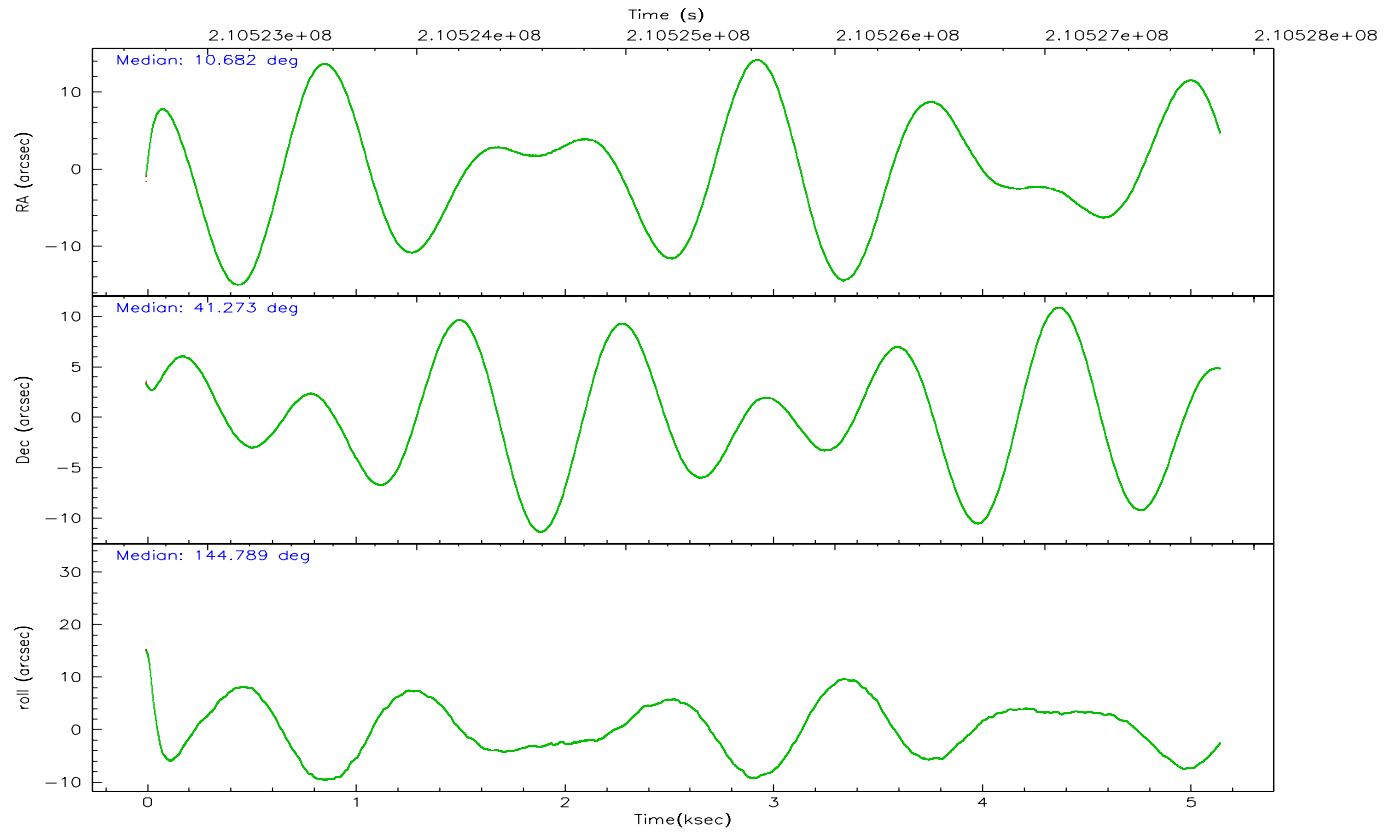
	ccd 0	ccd 1	ccd 2	ccd 3	ccd 6	ccd 7
grade 0 events	159	195	310	247	98	70
	4%	4%	6%	5%	2%	1%
grade 1 events	1	2	9	2	3	4
	0%	0%	0%	0%	0%	0%
grade 2 events	85	85	103	89	95	307
	2%	2%	2%	2%	2%	7%
grade 3 events	42	48	51	33	51	85
	1%	1%	1%	0%	1%	1%
grade 4 events	42	51	51	40	50	84
	1%	1%	1%	0%	1%	1%
grade 5 events	127	136	142	111	147	287
	3%	3%	3%	2%	3%	6%
grade 6 events	69	77	71	77	72	577
	1%	1%	1%	1%	1%	13%
grade 7 events	3287	3573	3709	3537	4069	2906
	86%	85%	83%	85%	88%	67%

2.2 Compared Parameters

Parameter	Planned	Actual	Parameter	Planned	Actual
Instrument	ACIS	ACIS	Obspar format version number	6	6
Detector	ACIS-012367	ACIS-012367	Obspar file type	PREDICTED	ACTUAL
Grating	NONE	NONE	Obspar update status	NONE	UPDATED
Data mode	FAINT	FAINT	On-chip summing requested	N	N
Observation mode	POINTING	POINTING	Subarray requested	NONE	NONE
Pointing RA	10.717624	10.68138654431639	Alternating exposures requested	Y	Y
Pointing Dec	41.270563	41.27295801241648	Primary exposure time	0.600000	0.6
Pointing Roll	144.565429	144.7980687709639	Secondary exposure time	0.000000	3.2
Window start time	210211264.184000	210211264.184000	Duty cycle	5	5
Window stop time	210816064.184000	210816064.184000			
SIM focus pos (mm)	-0.782348	-0.7809083437167272			
SIM defocus (mm)	0	0.001439871863259334			
SIM translation stage pos (mm)	-233.592463	-233.5874344608287			
SIM translation stage offset (mm)	0	-0.005018542100998502			
Observation start time	210522843.184000	210521362.25818			
Observation start date	2004-09-02T14:32:59	2004-09-02T14:09:22			
Observation end time	210527843.184000	210528571.596			
Observation end date	2004-09-02T15:56:19	2004-09-02T16:09:31			
Read mode	TIMED	TIMED			

2.3 Aspect



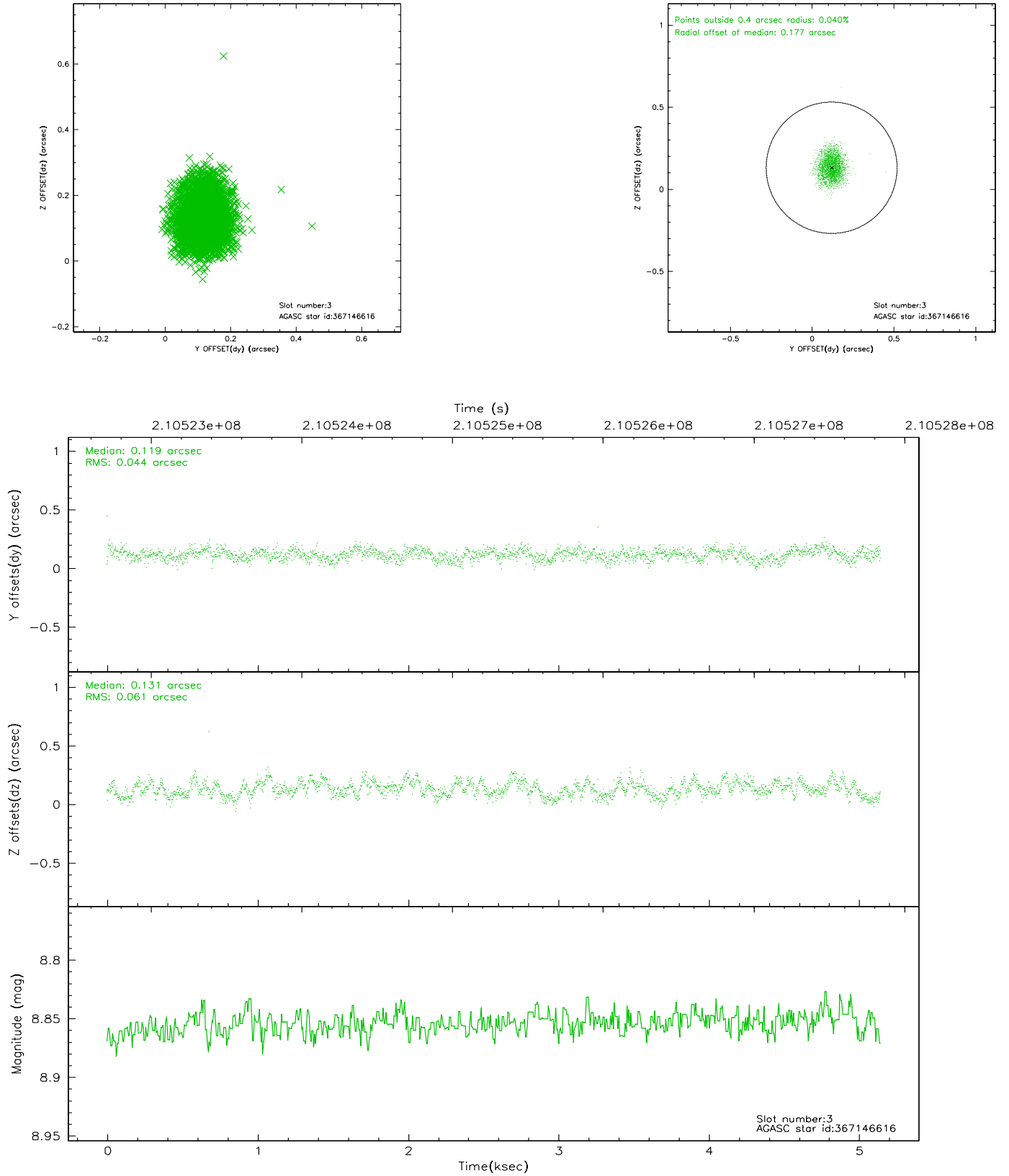


Slot Statistics

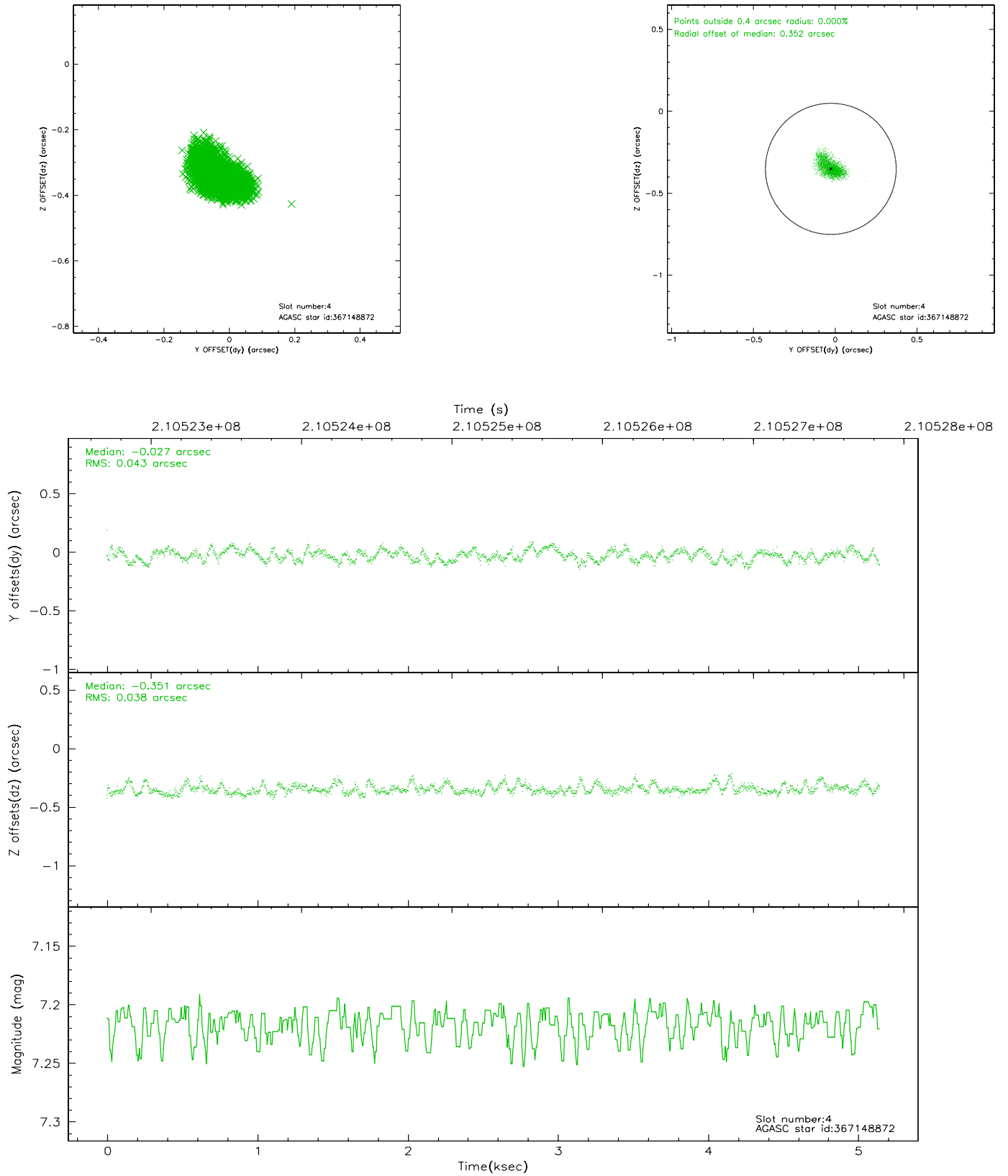
slot	status	id	mag	n_pts	med_dy	med_dz	dr1	dr2	ra	dec	mean_y	mean_z
0	FID	ACIS-I-1	7.24	1256	-0.022	0.038	0.006	0.011	0.000000	0.000000	933.02	-833.28
1	FID	ACIS-I-2	7.14	1256	-0.018	-0.052	0.009	0.017	0.000000	0.000000	-760.40	-840.45
2	FID	ACIS-I-5	7.22	1256	-0.053	0.086	0.007	0.013	0.000000	0.000000	-1815.87	1063.57
3	GUIDE	367146616	8.85	2510	0.119	0.131	0.080	0.125	11.418645	41.190163	-1710.22	-871.20
4	GUIDE	367148872	7.22	2510	-0.027	-0.351	0.061	0.103	10.505940	40.688258	-745.07	2042.37
5	GUIDE	367663272	9.28	2511	-0.100	0.018	0.083	0.135	10.656279	41.699429	1029.76	-1160.62
6	GUIDE	367674552	8.85	2510	0.004	0.094	0.079	0.127	11.016238	41.570845	-26.93	-1348.14
7	GUIDE	367657896	9.02	2510	0.004	0.103	0.070	0.113	11.197765	41.313576	-965.58	-881.97

2.4 Star Slots

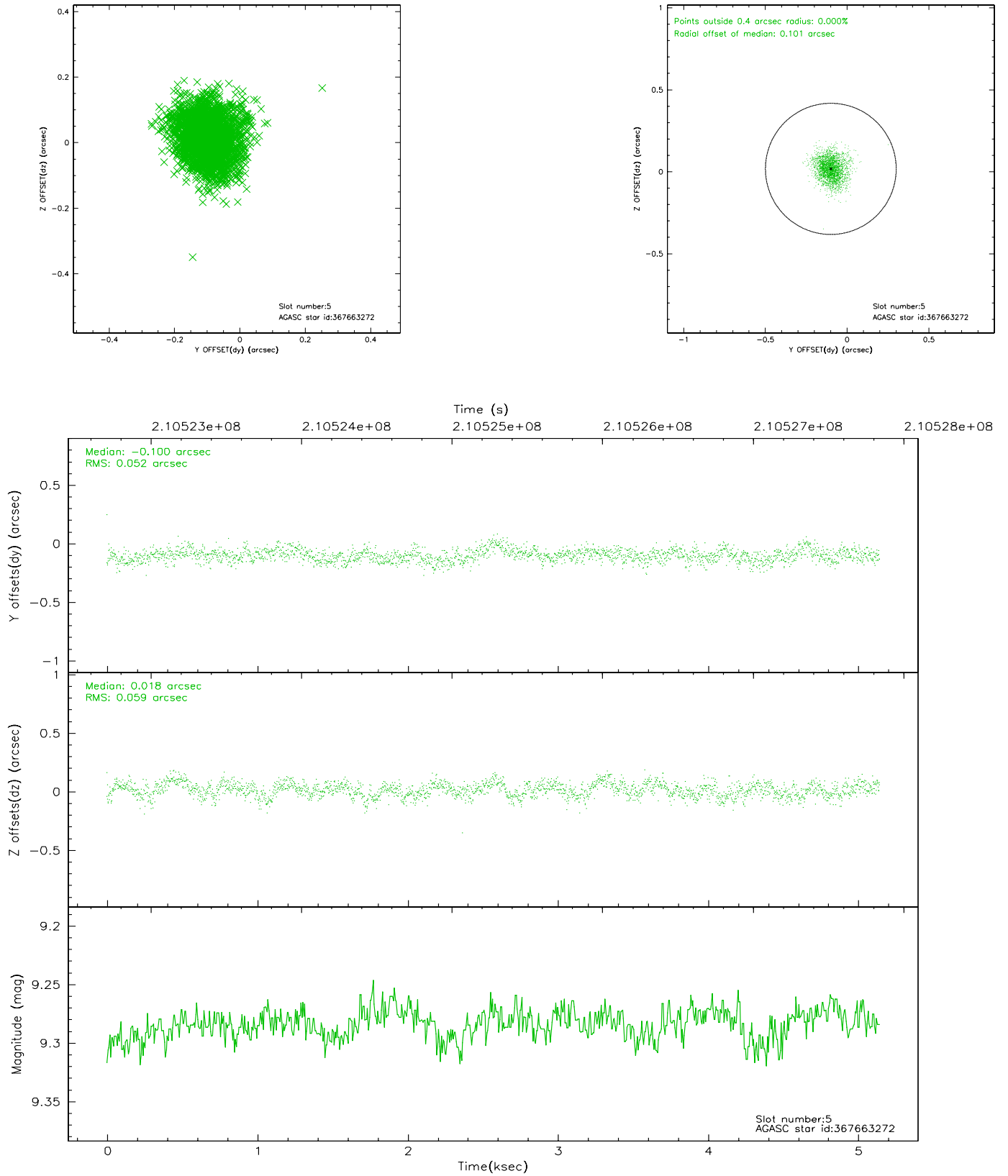
2.4.1 Slot 3



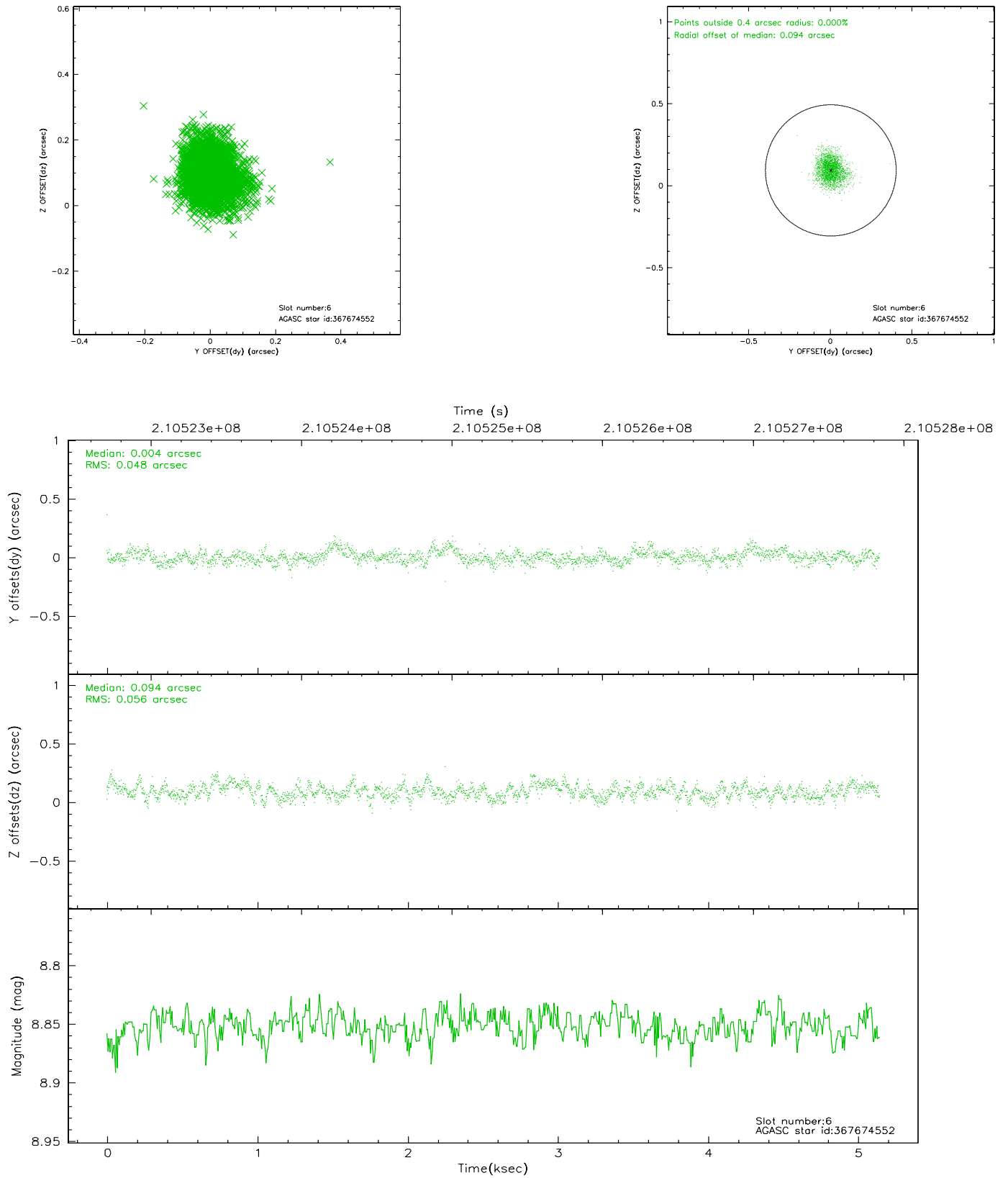
2.4.2 Slot 4



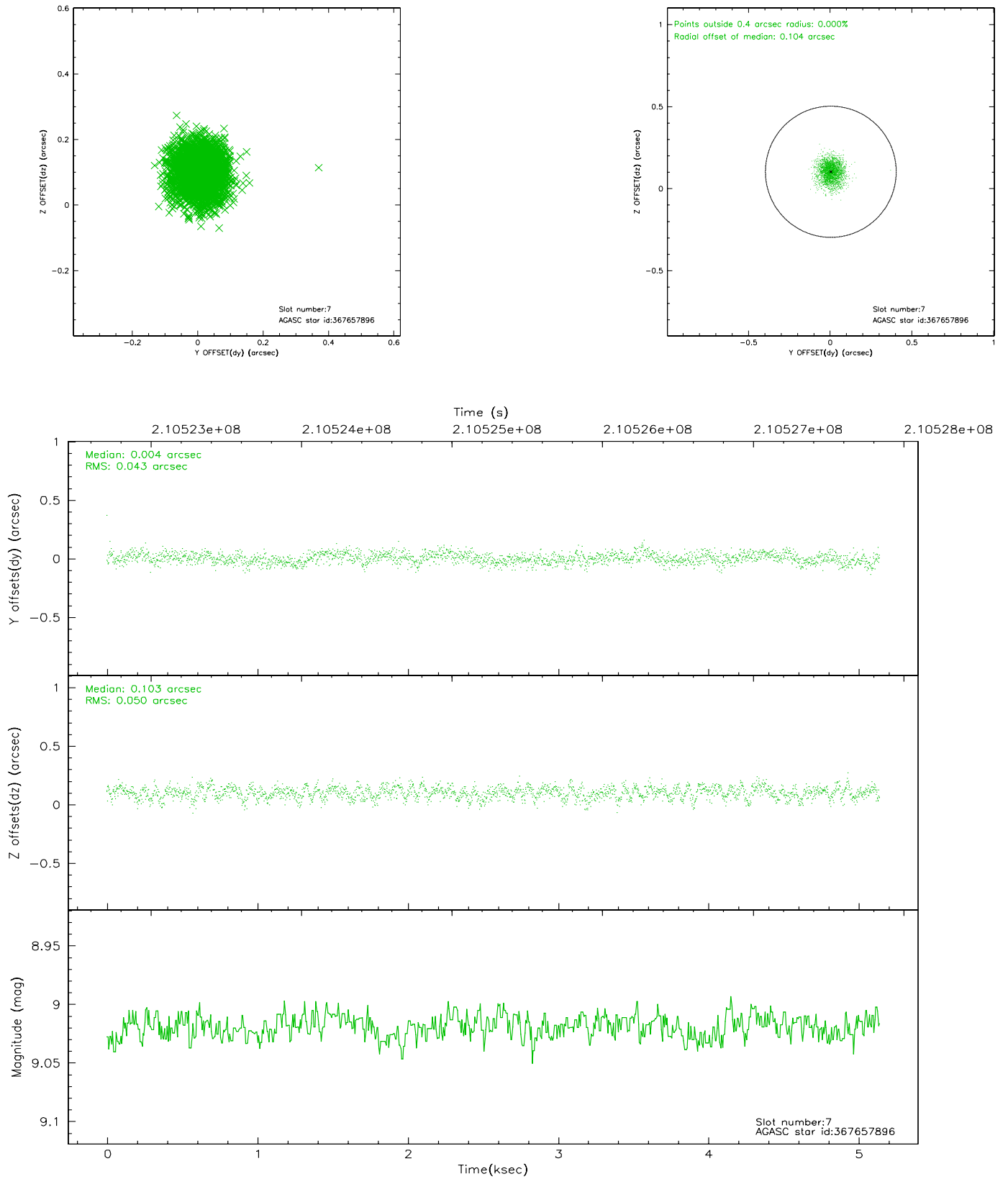
2.4.3 Slot 5



2.4.4 Slot 6

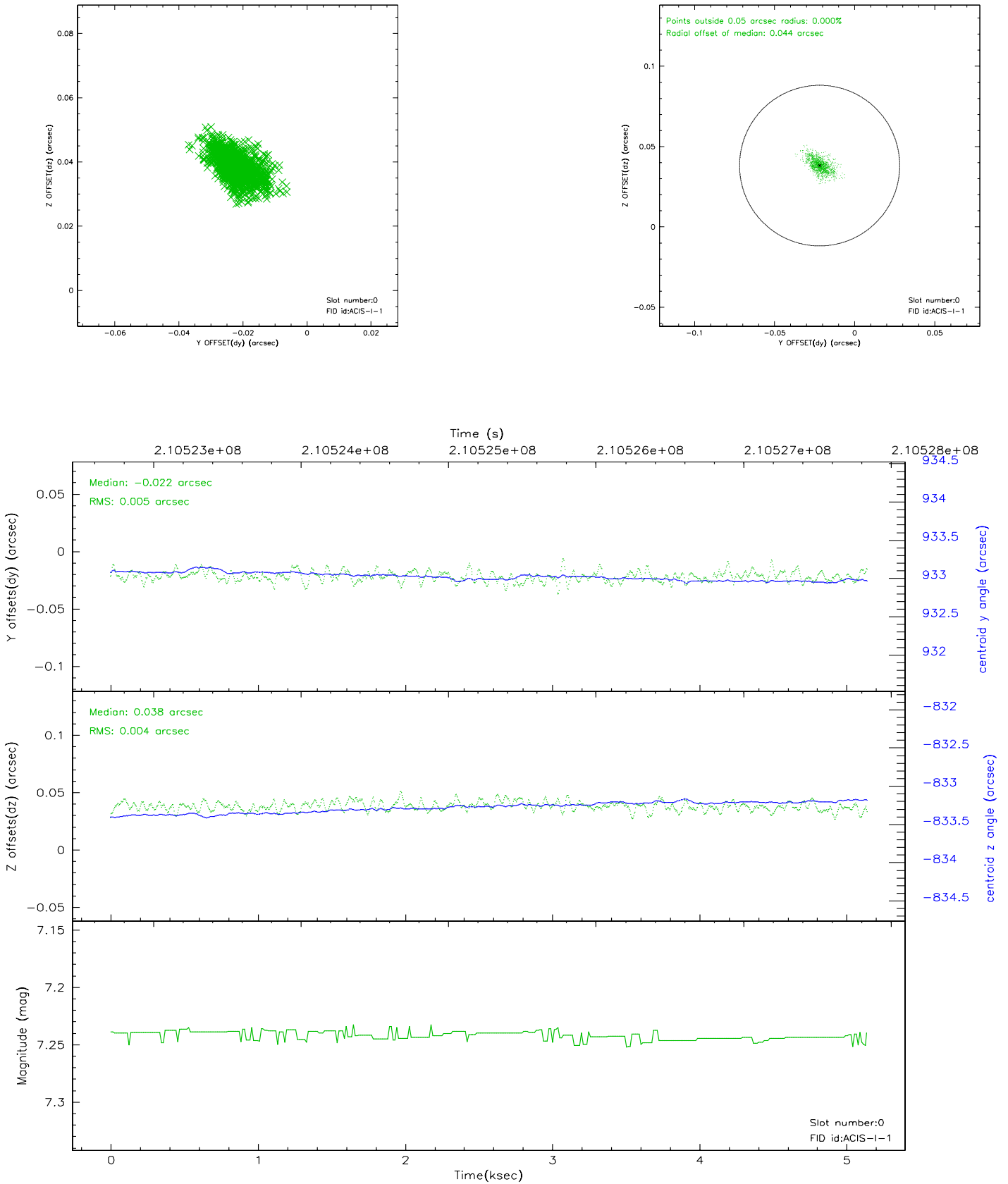


2.4.5 Slot 7

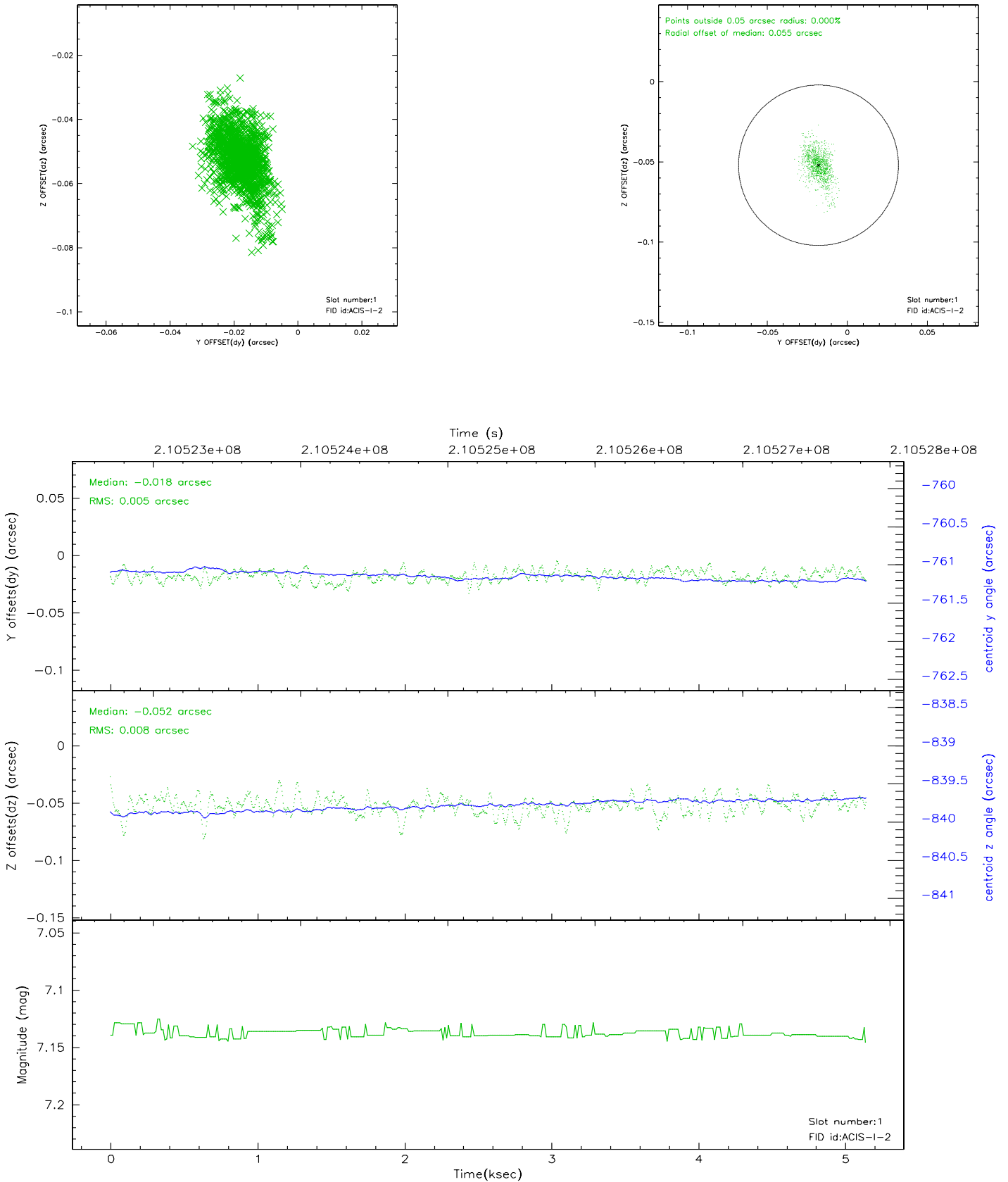


2.5 FID Slots

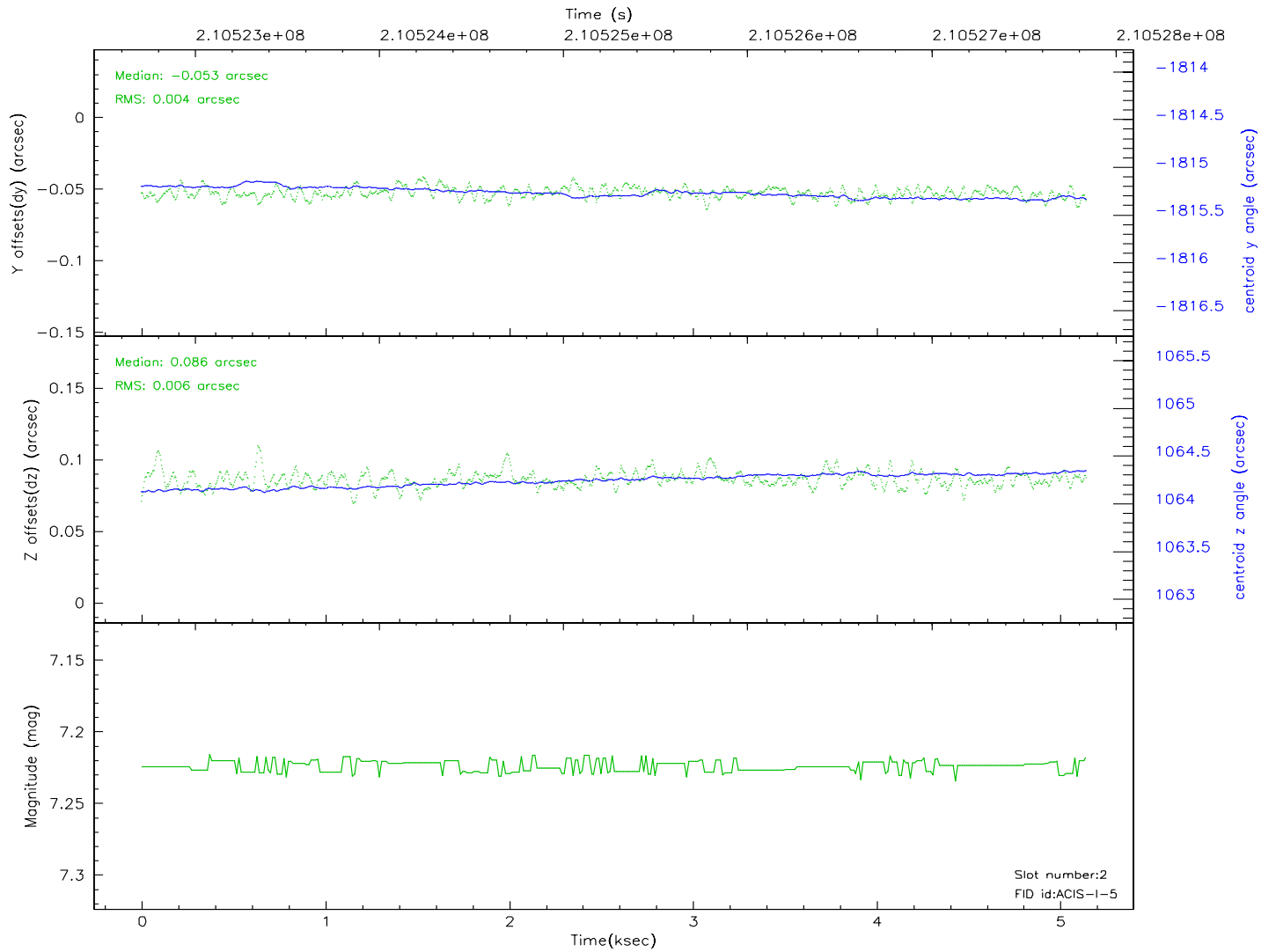
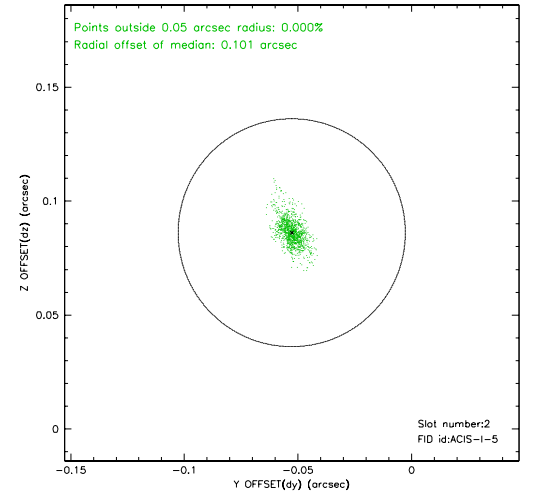
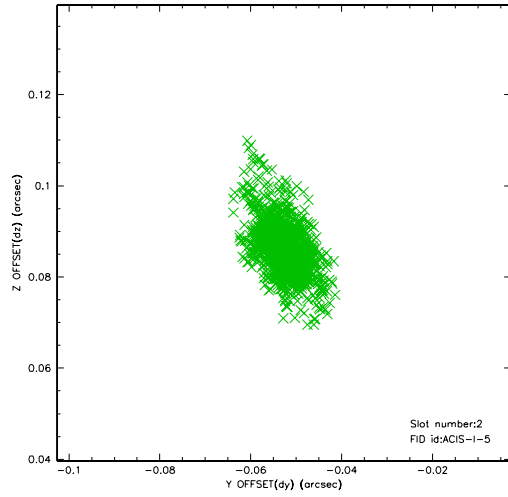
2.5.1 Slot 0



2.5.2 Slot 1



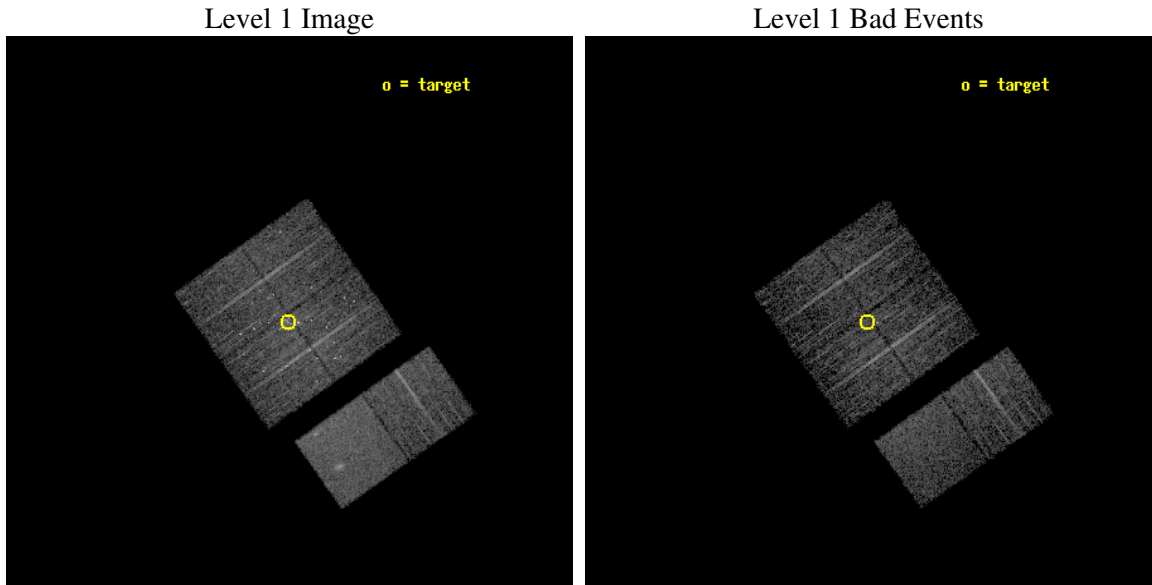
2.5.3 Slot 2



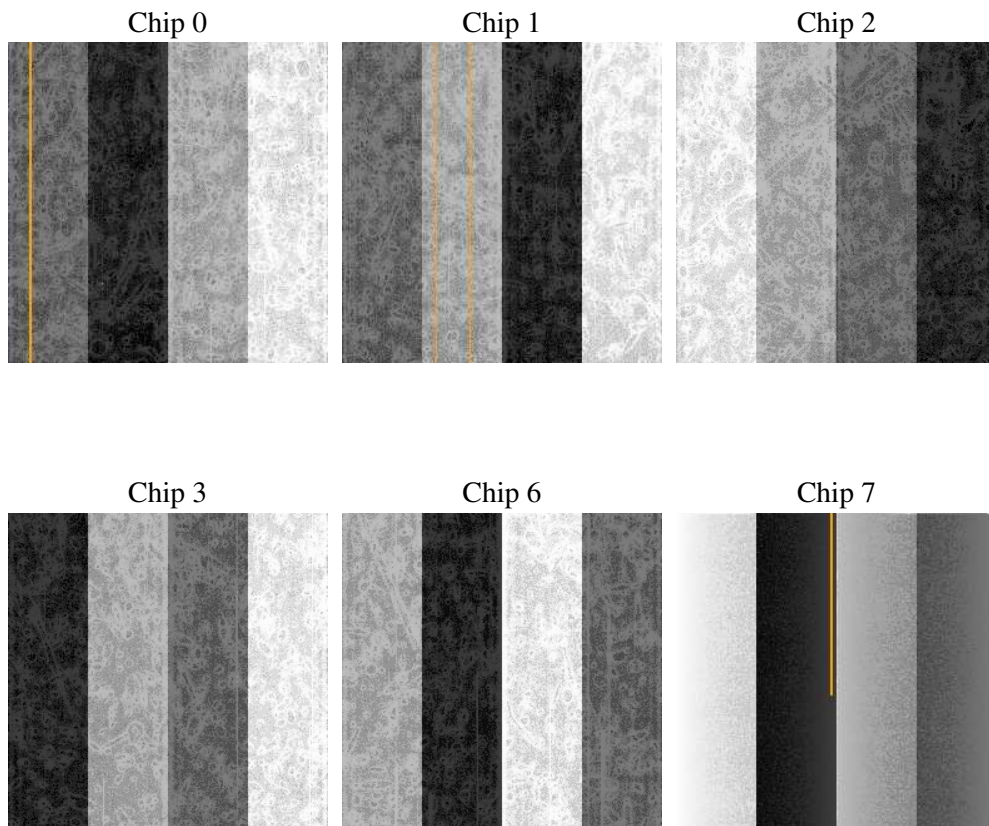
3 OBI Secondary

3.1 OBI

3.1.1 Images



3.1.2 Bias



3.1.3 Parameters

obi_num	1
ascdsver	7.6.7.1
caldsver	3.2.1
date	2006-04-19T07:30:45
revision	2

sched_exp_time	5000.000000
ontime	4709.1900056601
ontime0	4709.1900151968
ontime1	4709.1899453402
ontime2	4709.1898358762
ontime3	4709.1900056601
ontime6	4709.1899457574
ontime7	4709.1898956299
l1events	228274

3.1.4 Events

	ccd 0	ccd 1	ccd 2	ccd 3	ccd 6	ccd 7
level 1 events	32878	33404	38220	38559	36368	48845
rejected events	28210	26830	30441	30899	32659	31681
rejected %	85%	80%	79%	80%	89%	64%

	ccd 0	ccd 1	ccd 2	ccd 3	ccd 6	ccd 7
grade 0 events	2656	4014	5116	5296	1716	1360
	8%	12%	13%	13%	4%	2%
grade 1 events	28	42	172	78	16	30
	0%	0%	0%	0%	0%	0%
grade 2 events	1032	1245	1375	1135	875	4867
	3%	3%	3%	2%	2%	9%
grade 3 events	421	554	549	536	374	1023
	1%	1%	1%	1%	1%	2%
grade 4 events	413	516	539	513	378	1015
	1%	1%	1%	1%	1%	2%
grade 5 events	1437	1428	1496	1535	1591	3139
	4%	4%	3%	3%	4%	6%
grade 6 events	703	901	831	807	825	11113
	2%	2%	2%	2%	2%	22%
grade 7 events	26188	24704	28142	28659	30593	26298
	79%	73%	73%	74%	84%	53%

4 Point Sources

A Summary

A.1 Status

V&V Scientist	Beth Sundheim
V&V Date (YYYY-MM-DD)	2006.04.19
V&V Edition	1
V&V Disposition and Status	OK
V&V Charge Time	5.136

A.2 Comments