

V&V Reference Report

L2 ASCDS Version : 7.6.7.2

Observation 4719 - L2 Version _e1
Chandra X-Ray Center

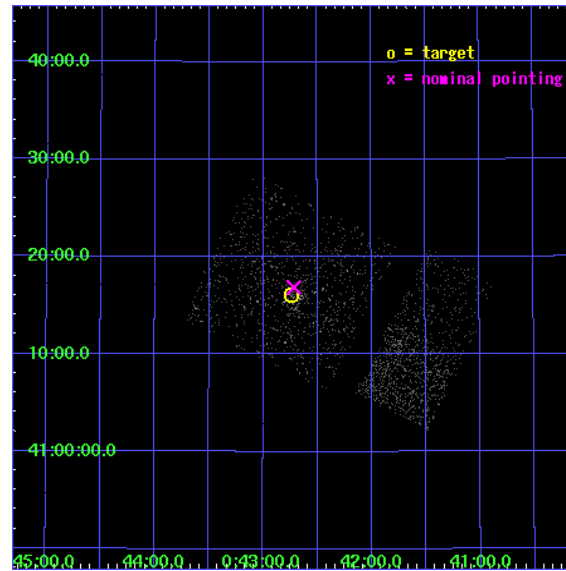
L2 Processing Date : Apr 28 2006

Contents

1	Front	2
2	OBI Primary	3
2.1	OBI	3
2.1.1	Images	3
2.1.2	Bias	3
2.1.3	Parameters	4
2.1.4	Events	4
2.2	Compared Parameters	5
2.3	Aspect	6
2.4	Star Slots	9
2.4.1	Slot 3	9
2.4.2	Slot 4	10
2.4.3	Slot 5	11
2.4.4	Slot 6	12
2.4.5	Slot 7	13
2.5	FID Slots	14
2.5.1	Slot 0	14
2.5.2	Slot 1	15
2.5.3	Slot 2	16
3	OBI Secondary	17
3.1	OBI	17
3.1.1	Images	17
3.1.2	Bias	17
3.1.3	Parameters	18
3.1.4	Events	18
4	Point Sources	19
A	Summary	20
A.1	Status	20
A.2	Comments	20

1 Front

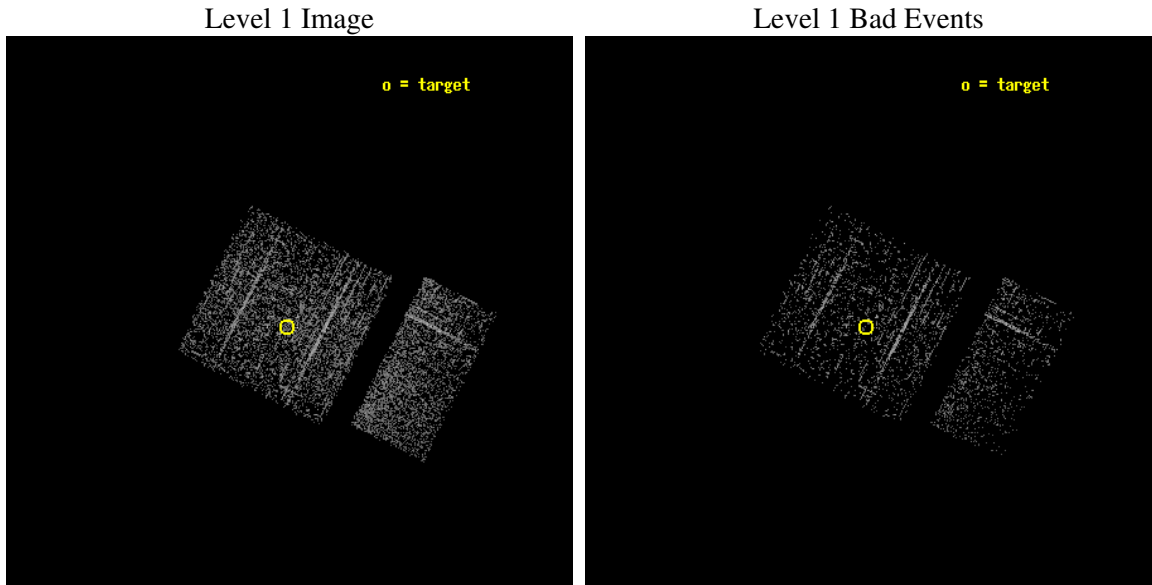
seq_num	600374
obs_id	4719
title	Black Hole X-ray Novae in M31
observer	Dr. MICHAEL GARCIA
object	M31-bulge
dtcycle	0
cycle	P
ra_targ	10.684583
dec_targ	41.269
ra_nom	10.679097448171
dec_nom	41.281056870818
roll_nom	116.82957208754
revision	2
ontime	981.51694080234
livetime	154.51444221522
ontime0	981.51694080234
ontime1	981.51694080234
ontime2	981.51694080234
ontime3	981.51694080234
ontime6	981.51694080234
ontime7	981.51694080234
l2events	2502



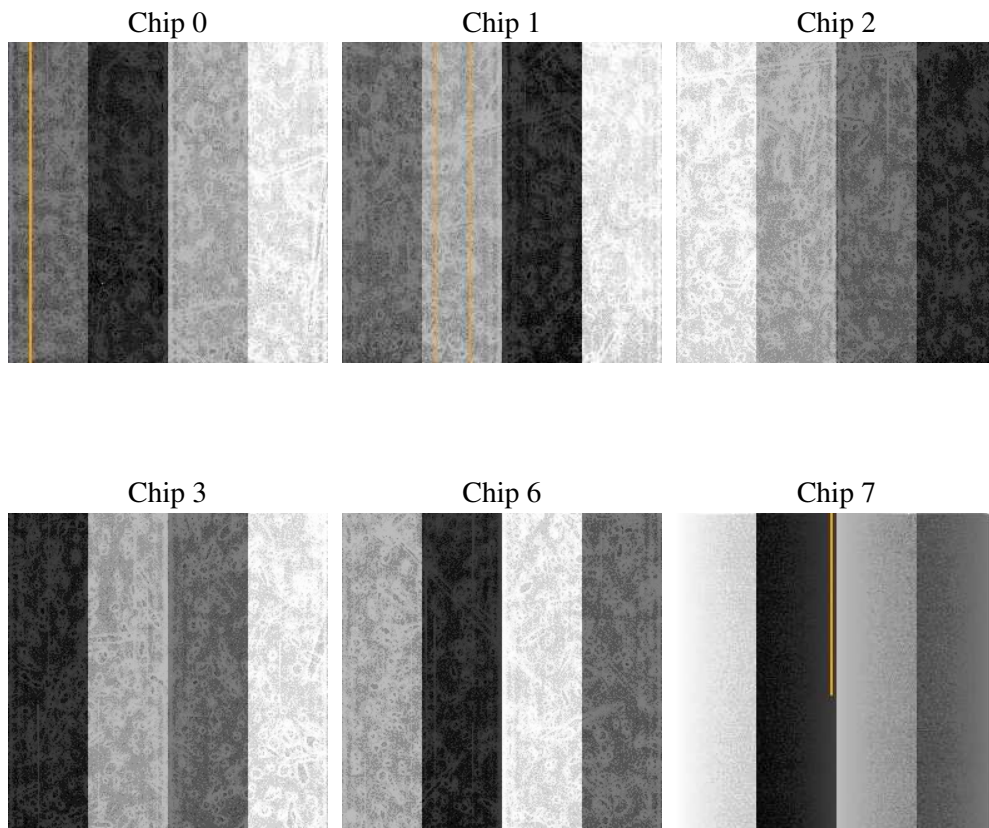
2 OBI Primary

2.1 OBI

2.1.1 Images



2.1.2 Bias



2.1.3 Parameters

obi_num	0
ascdsver	7.6.7.2
caldsver	3.2.1
date	2006-04-28T02:05:26
revision	2

sched_exp_time	5000.000000
ontime	1288.2396805286
ontime0	1288.2396805286
ontime1	1288.2396805286
ontime2	1288.2396805286
ontime3	1288.2396805286
ontime6	1284.4283205271
ontime7	1284.4283205271
l1events	27060

2.1.4 Events

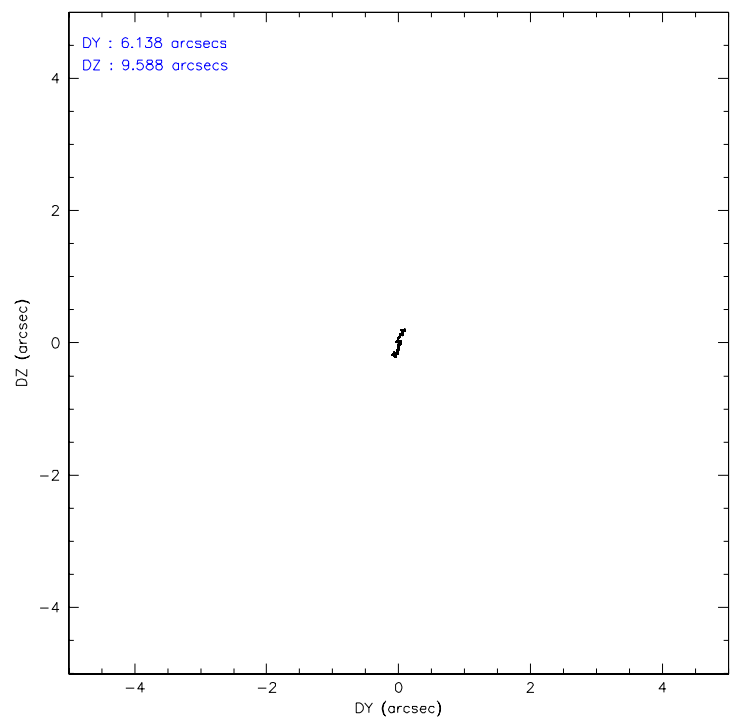
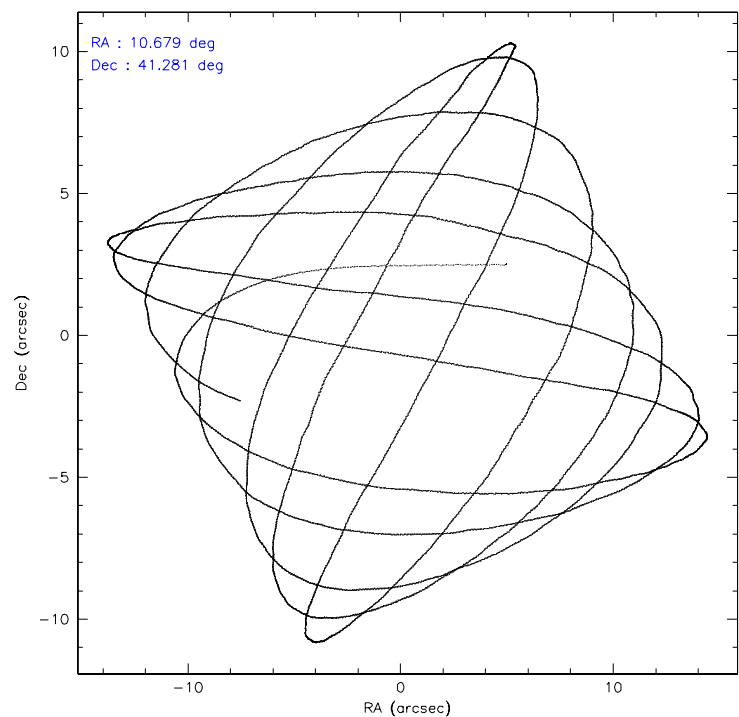
	ccd 0	ccd 1	ccd 2	ccd 3	ccd 6	ccd 7
level 1 events	3926	4154	5017	4764	4781	4418
rejected events	3591	3762	4676	4172	4510	3520
rejected %	91%	90%	93%	87%	94%	79%

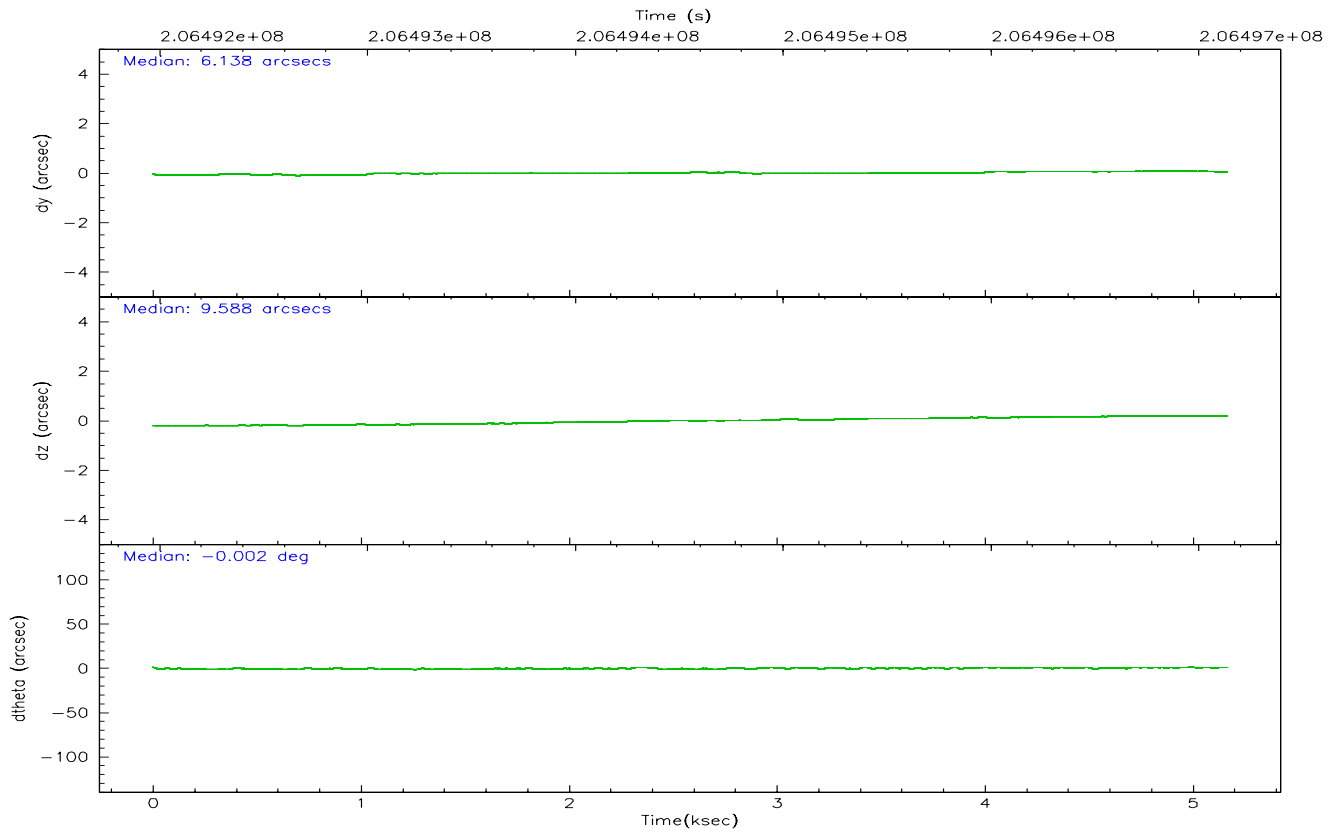
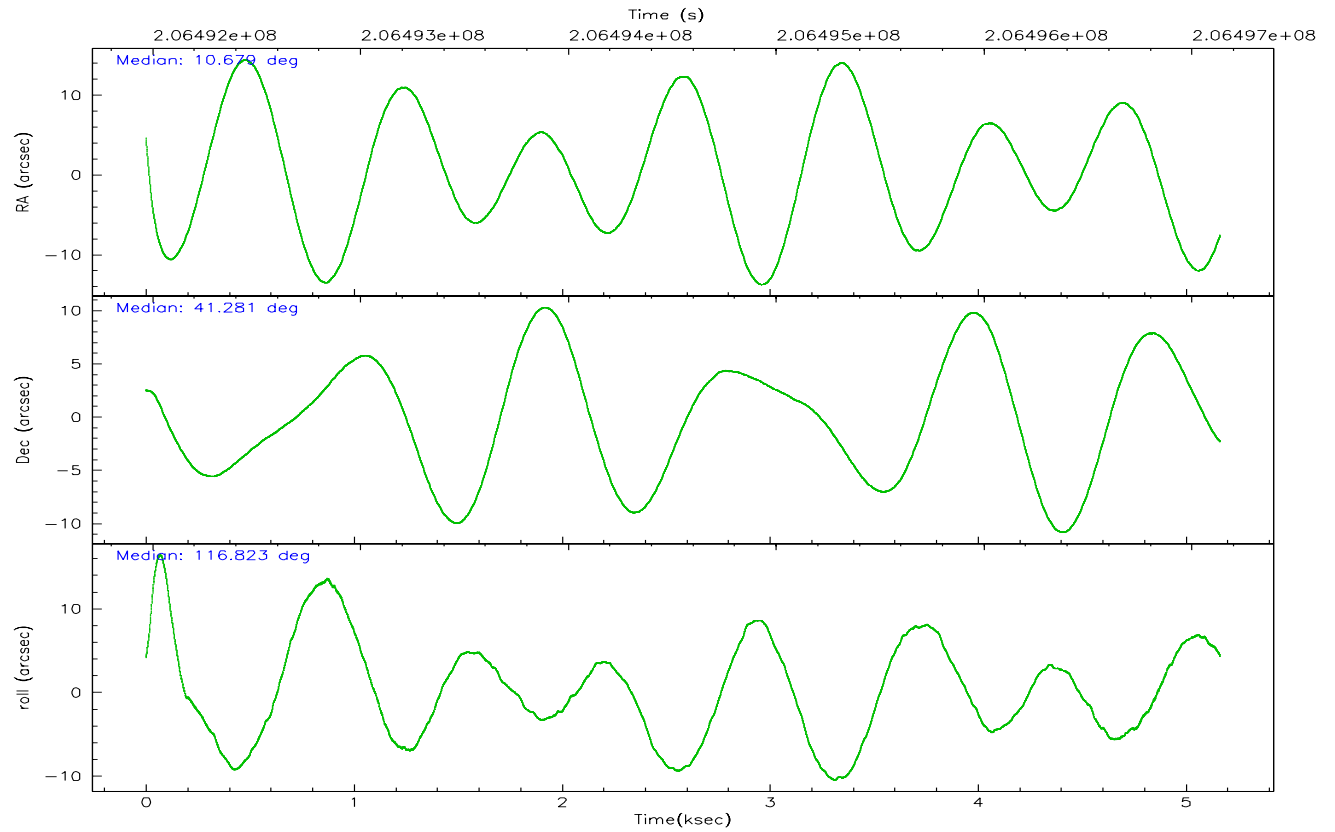
	ccd 0	ccd 1	ccd 2	ccd 3	ccd 6	ccd 7
grade 0 events	147	193	200	381	95	85
	3%	4%	3%	7%	1%	1%
grade 1 events	2	1	2	9	2	4
	0%	0%	0%	0%	0%	0%
grade 2 events	81	97	89	125	78	286
	2%	2%	1%	2%	1%	6%
grade 3 events	64	63	34	62	42	85
	1%	1%	0%	1%	0%	1%
grade 4 events	48	54	42	44	44	86
	1%	1%	0%	0%	0%	1%
grade 5 events	127	135	129	164	147	317
	3%	3%	2%	3%	3%	7%
grade 6 events	67	82	57	63	91	644
	1%	1%	1%	1%	1%	14%
grade 7 events	3390	3529	4464	3916	4282	2911
	86%	84%	88%	82%	89%	65%

2.2 Compared Parameters

Parameter	Planned	Actual	Parameter	Planned	Actual
Instrument	ACIS	ACIS	Obspar format version number	6	6
Detector	ACIS-012367	ACIS-012367	Obspar file type	PREDICTED	ACTUAL
Grating	NONE	NONE	Obspar update status	NONE	UPDATED
Data mode	FAINT	FAINT	On-chip summing requested	N	N
Observation mode	POINTING	POINTING	Subarray requested	NONE	NONE
Pointing RA	10.709779	10.67909744817111	Alternating exposures requested	Y	Y
Pointing Dec	41.266185	41.28105687081823	Primary exposure time	0.600000	0.6
Pointing Roll	116.600666	116.8295720875378	Secondary exposure time	0.000000	3.2
Window start time	205977664.184000	205977664.184000	Duty cycle	5	5
Window stop time	206582464.184000	206582464.184000			
SIM focus pos (mm)	-0.782348	-0.7809083437167272			
SIM defocus (mm)	0	0.001439871863259334			
SIM translation stage pos (mm)	-233.592463	-233.5874344608287			
SIM translation stage offset (mm)	0	-0.005018542100998502			
Observation start time	206492132.184000	206490236.44135			
Observation start date	2004-07-17T22:54:28	2004-07-17T22:23:56			
Observation end time	206497132.184000	206497910.10419			
Observation end date	2004-07-18T00:17:48	2004-07-18T00:31:50			
Read mode	TIMED	TIMED			

2.3 Aspect



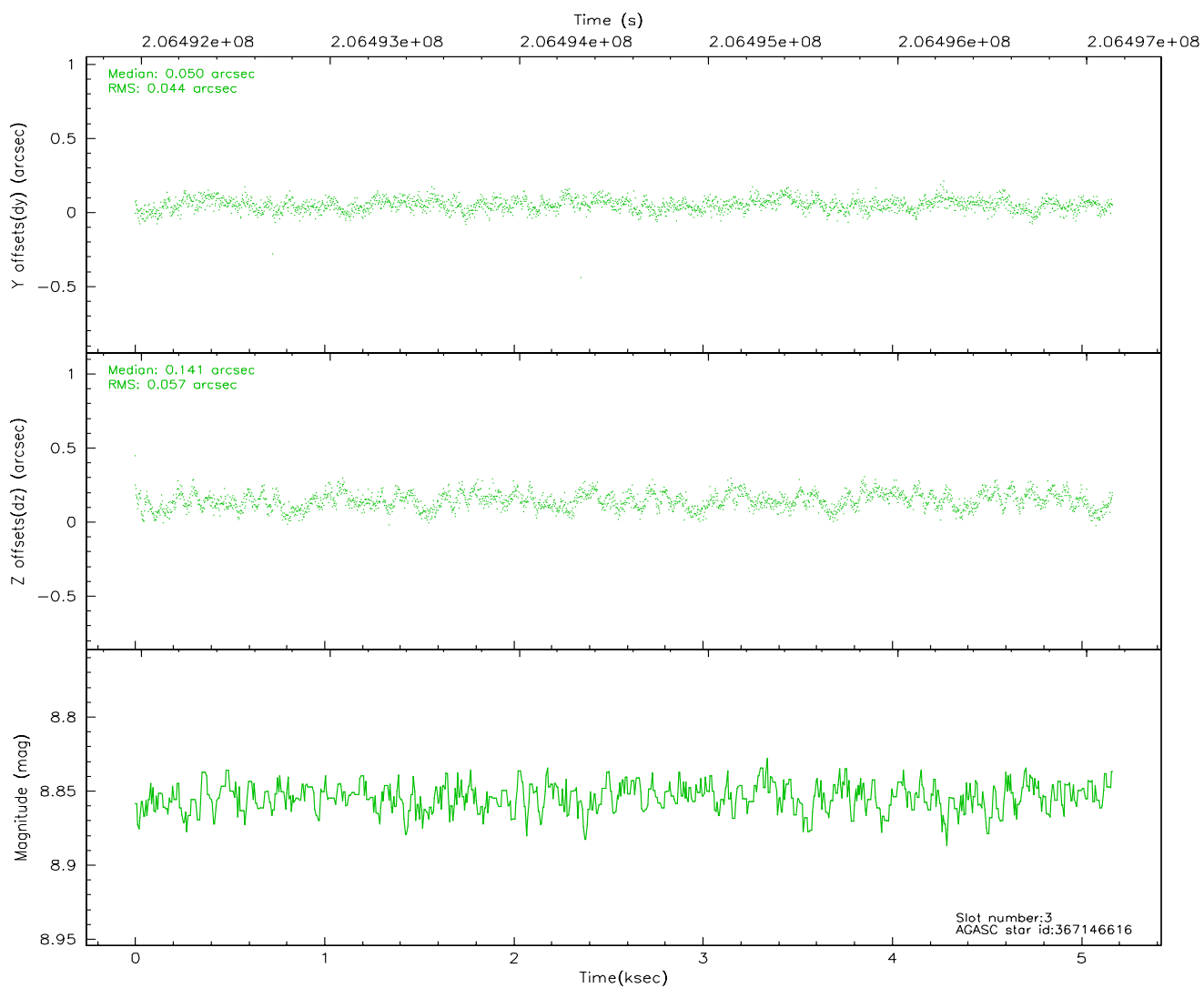
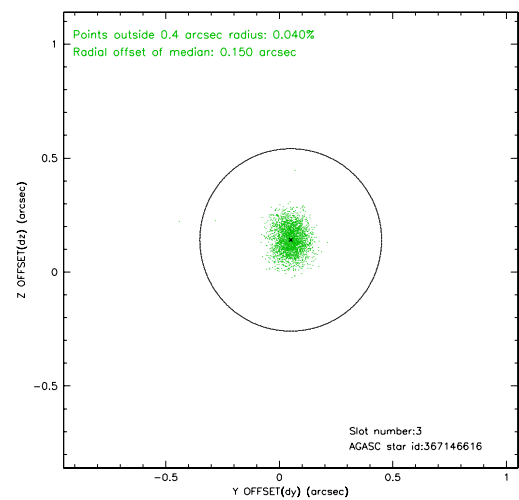
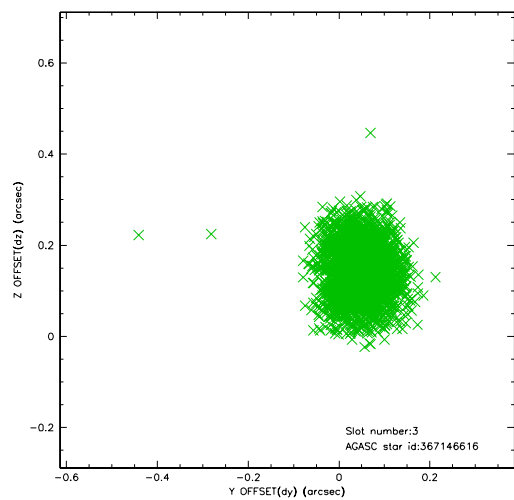


Slot Statistics

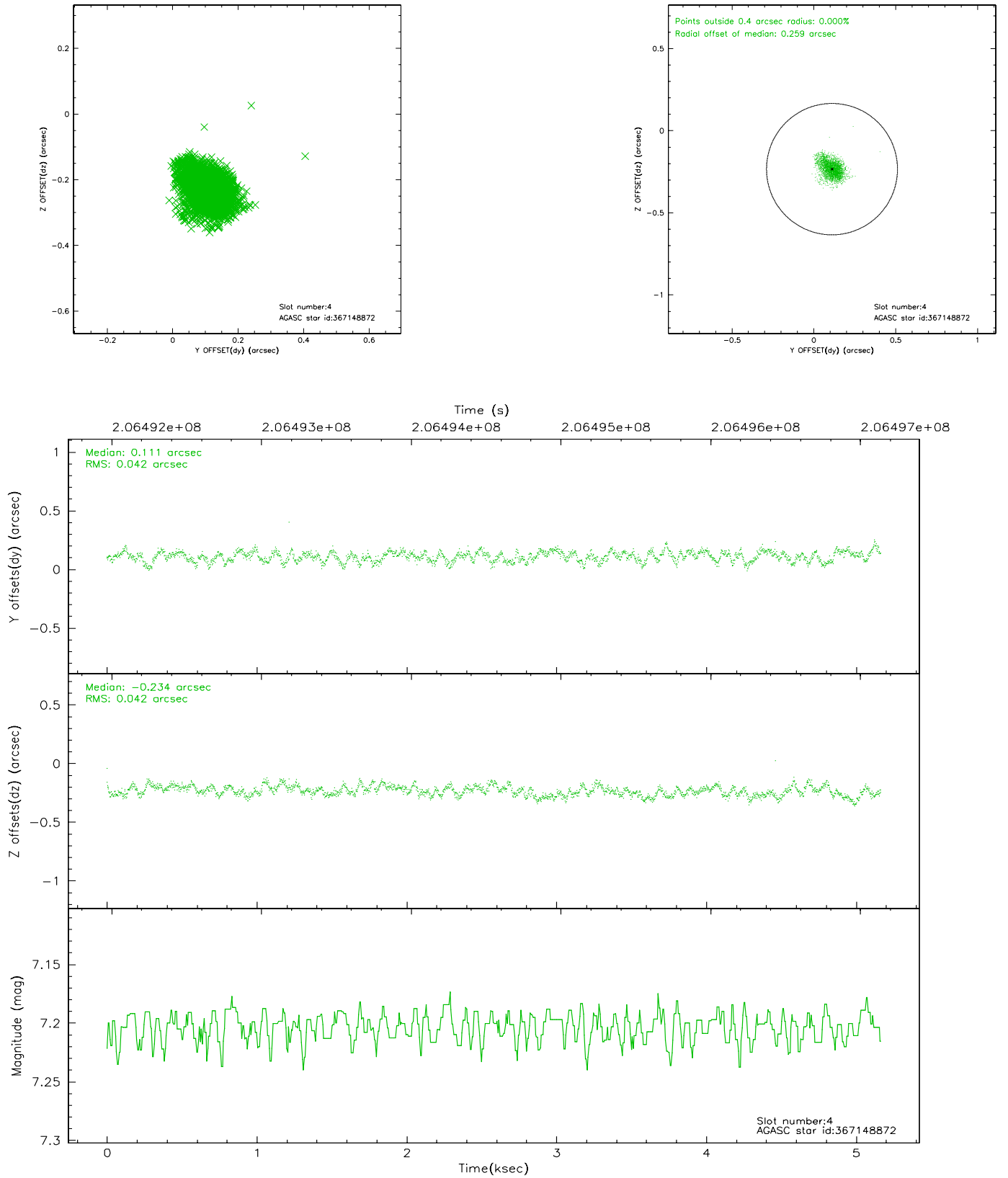
slot	status	id	mag	n_pts	med_dy	med_dz	dr1	dr2	ra	dec	mean_y	mean_z
0	FID	ACIS-I-1	7.24	1260	-0.023	0.065	0.009	0.014	0.000000	0.000000	933.54	-832.97
1	FID	ACIS-I-5	7.23	1260	-0.122	0.016	0.013	0.018	0.000000	0.000000	-1814.02	1063.87
2	FID	ACIS-I-6	7.26	1260	0.055	-0.011	0.009	0.014	0.000000	0.000000	397.88	1709.69
3	GUIDE	367146616	8.85	2518	0.050	0.141	0.077	0.125	11.418645	41.190163	-1097.24	-1598.05
4	GUIDE	367148872	7.20	2521	0.111	-0.234	0.062	0.105	10.505940	40.688258	-1611.16	1428.02
5	GUIDE	367657896	9.02	2521	0.026	0.039	0.087	0.133	11.197765	41.313576	-435.31	-1257.33
6	GUIDE	367663272	9.28	2507	-0.083	-0.022	0.088	0.145	10.656279	41.699429	1458.99	-569.76
7	GUIDE	367674552	8.84	2519	-0.101	0.074	0.063	0.102	11.016238	41.570845	613.11	-1229.89

2.4 Star Slots

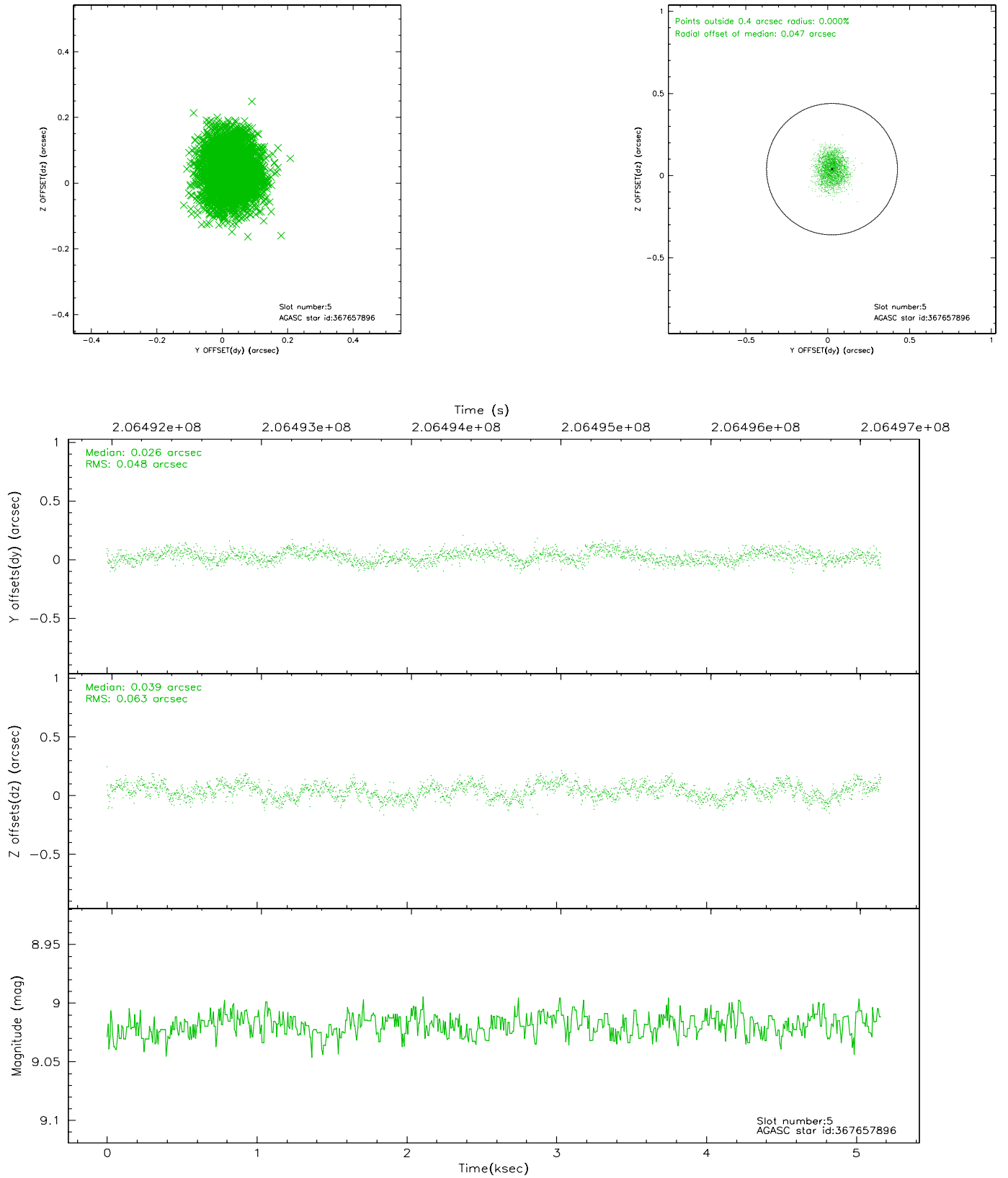
2.4.1 Slot 3



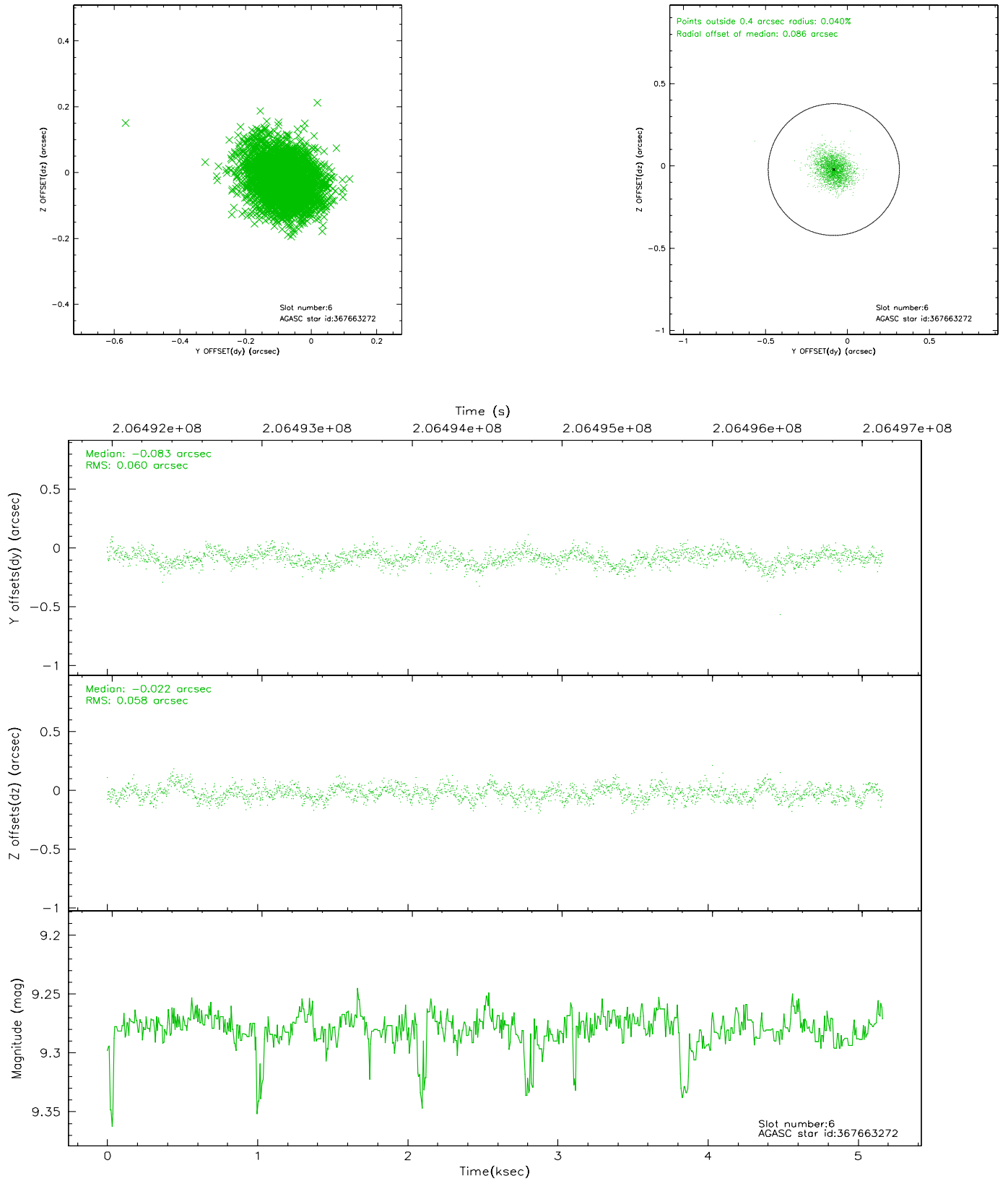
2.4.2 Slot 4



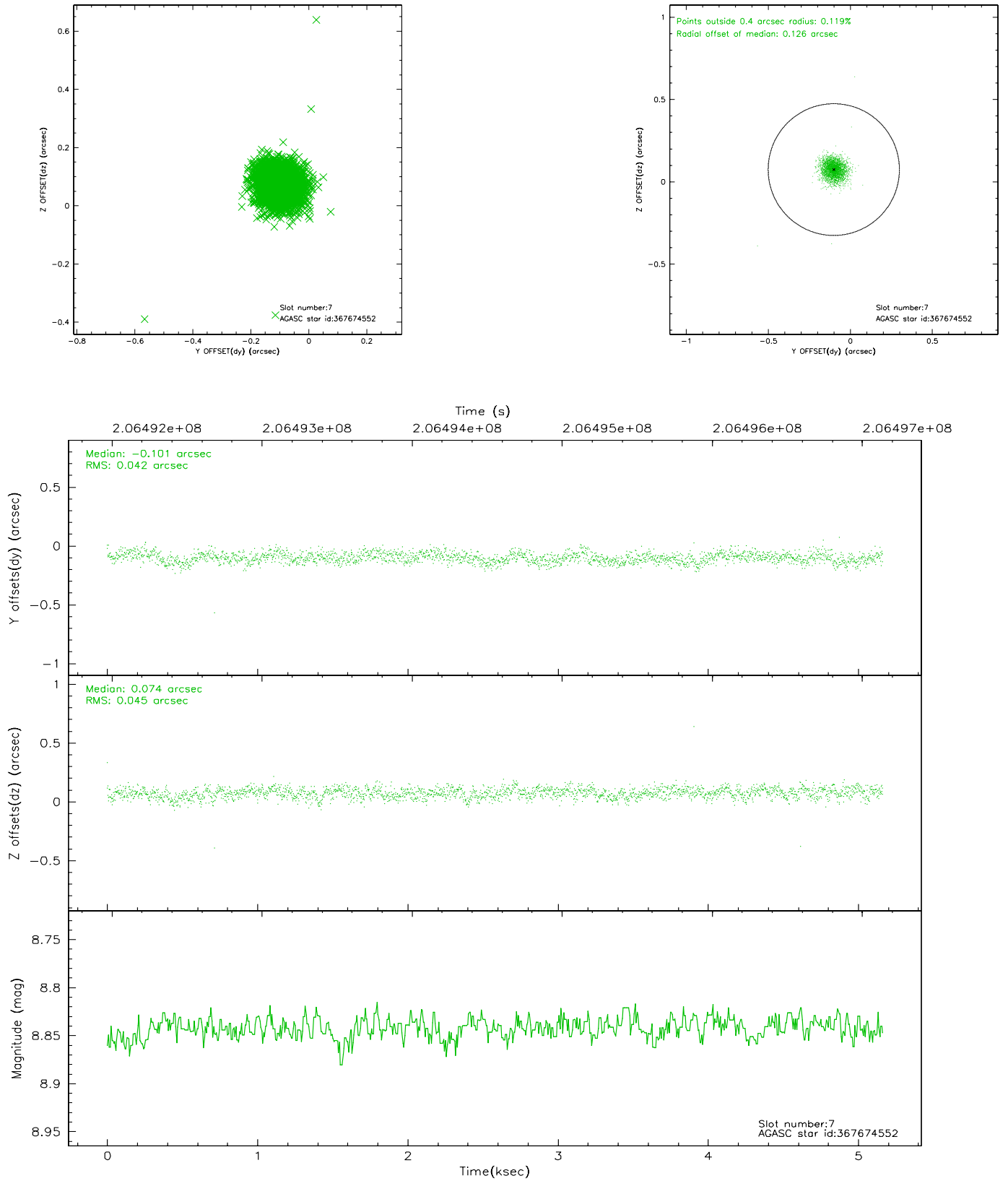
2.4.3 Slot 5



2.4.4 Slot 6

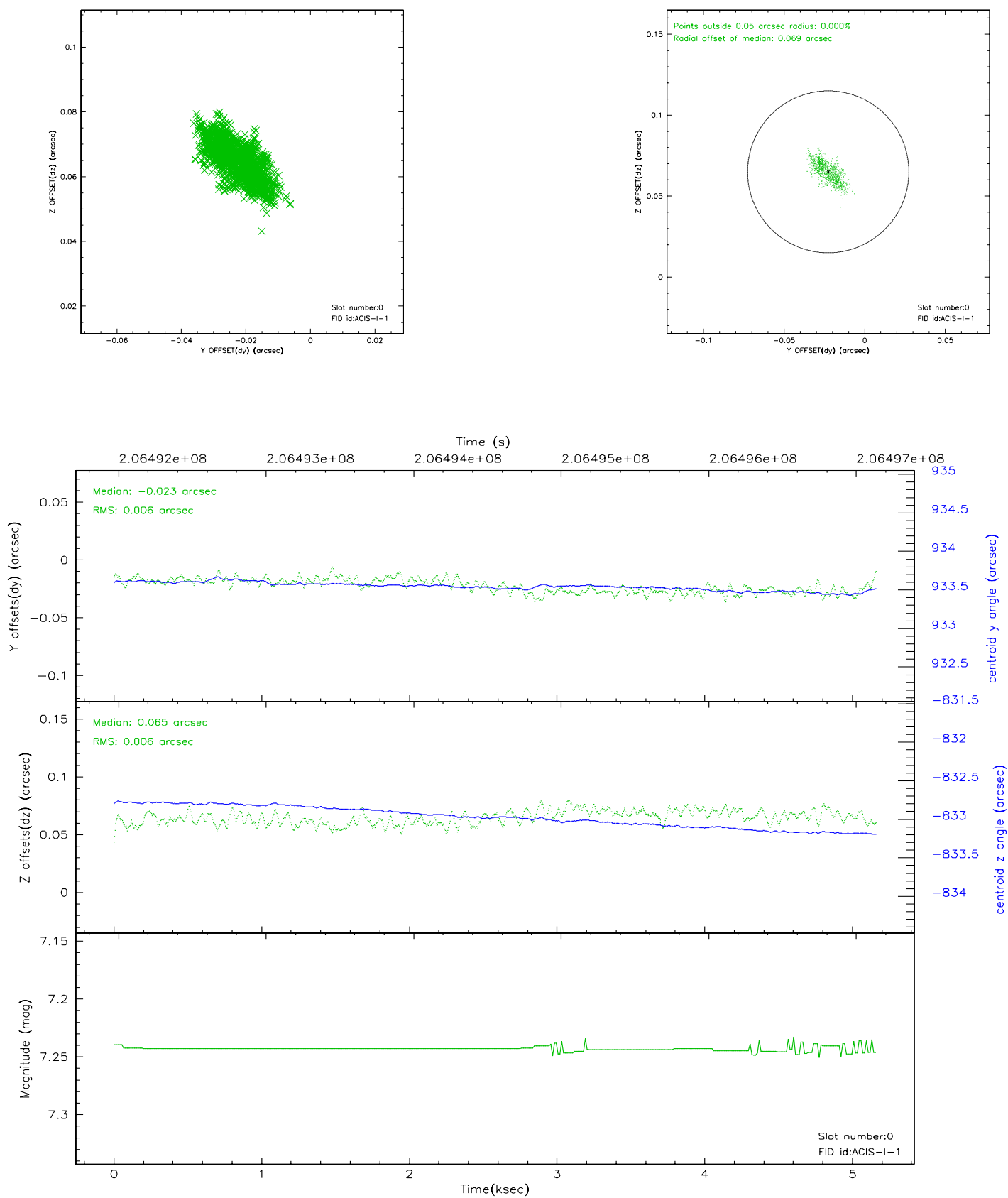


2.4.5 Slot 7

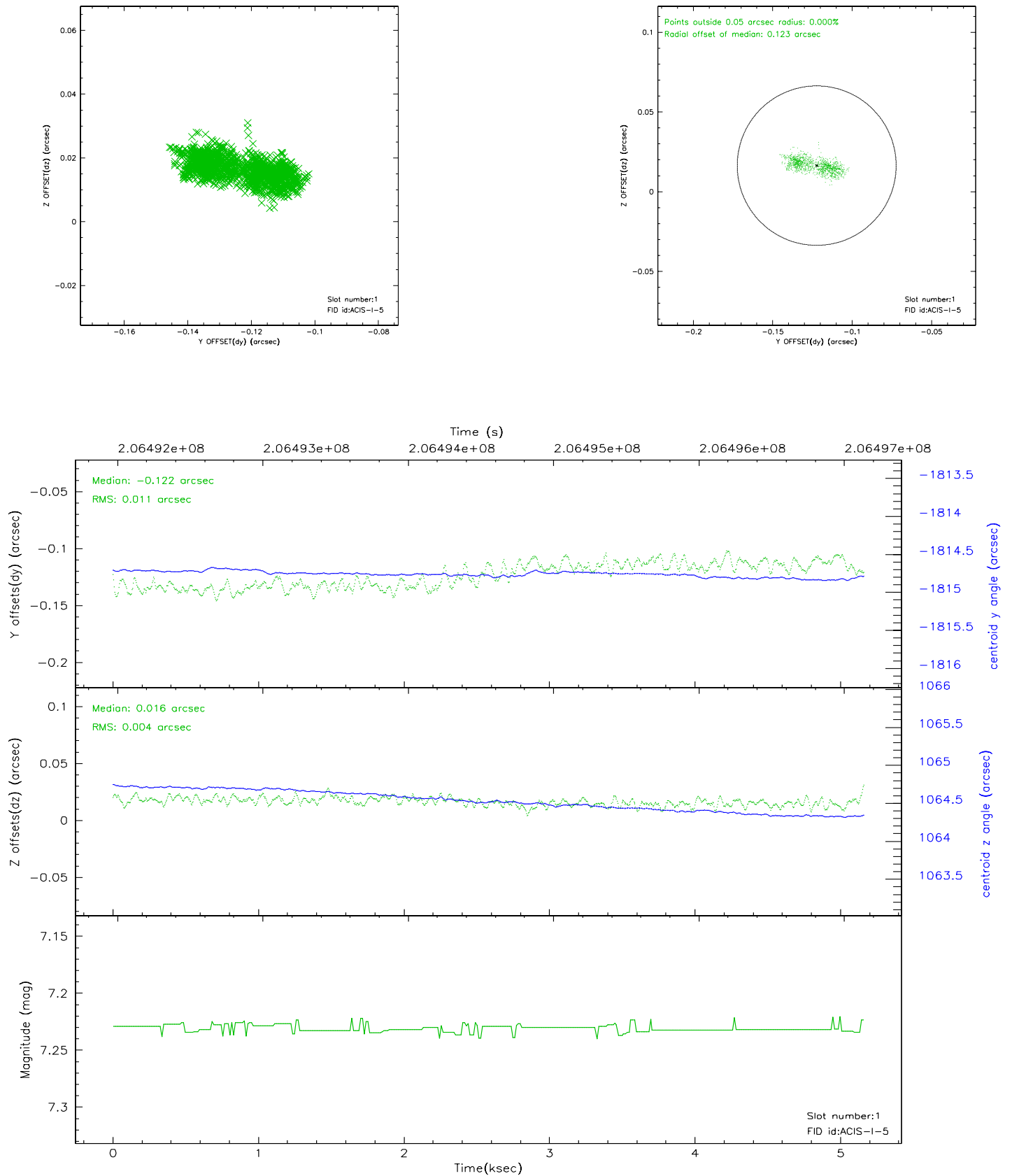


2.5 FID Slots

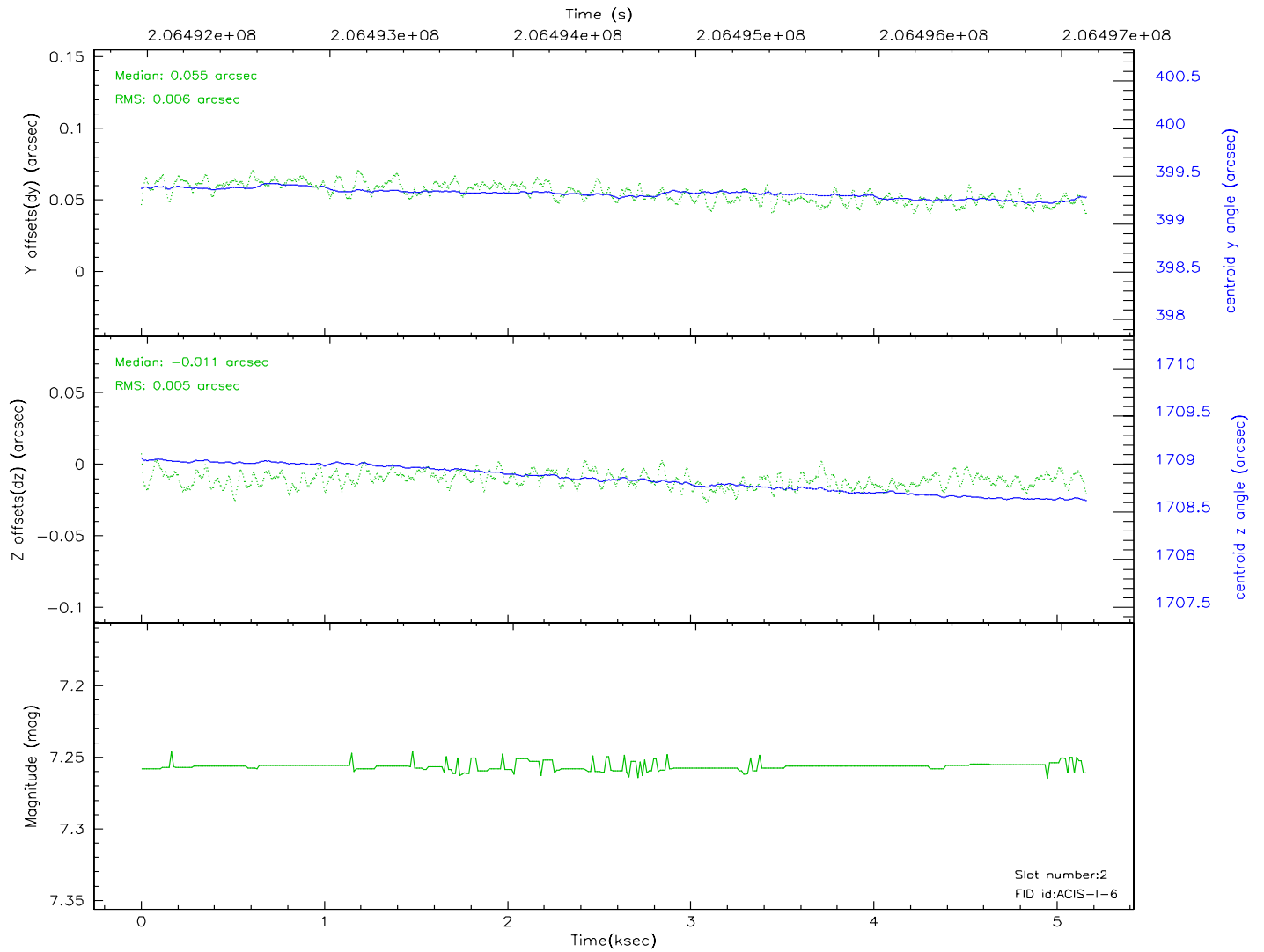
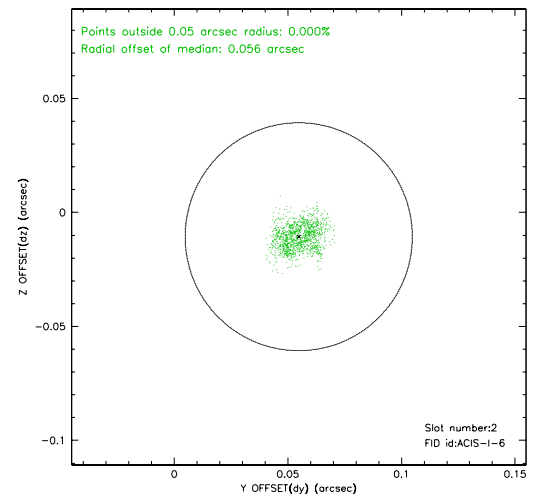
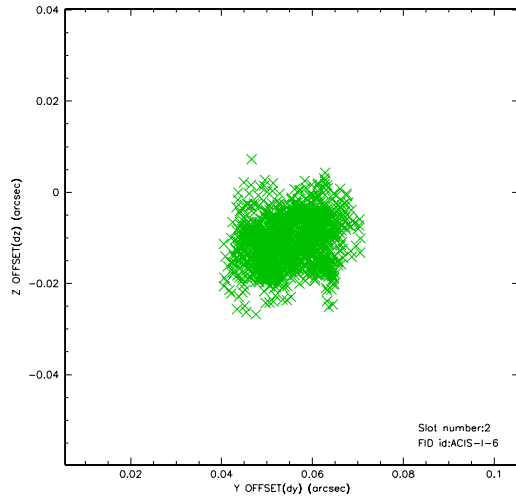
2.5.1 Slot 0



2.5.2 Slot 1



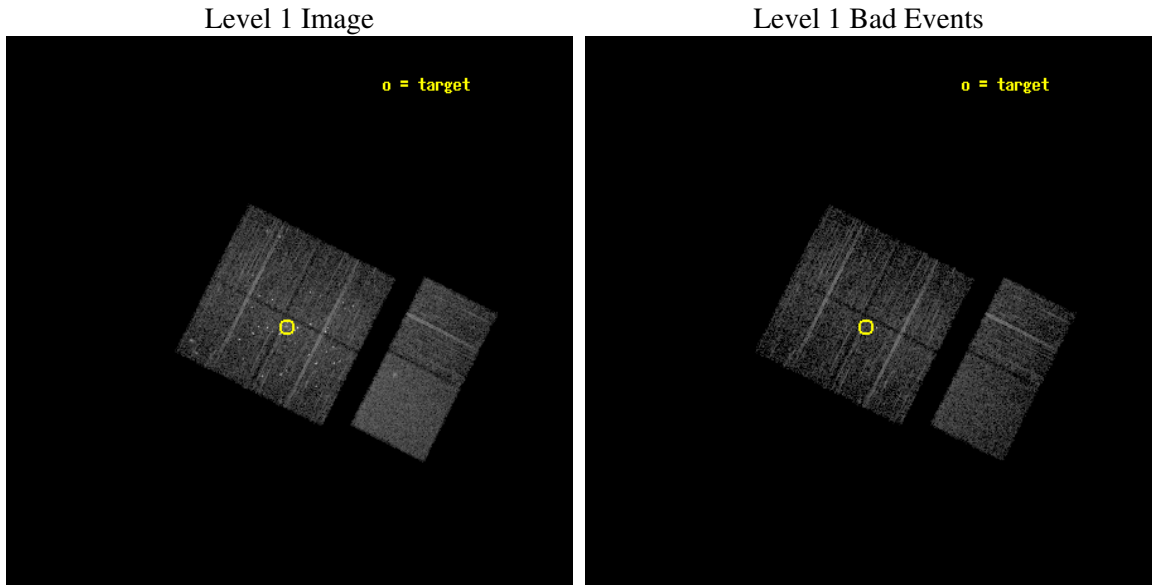
2.5.3 Slot 2



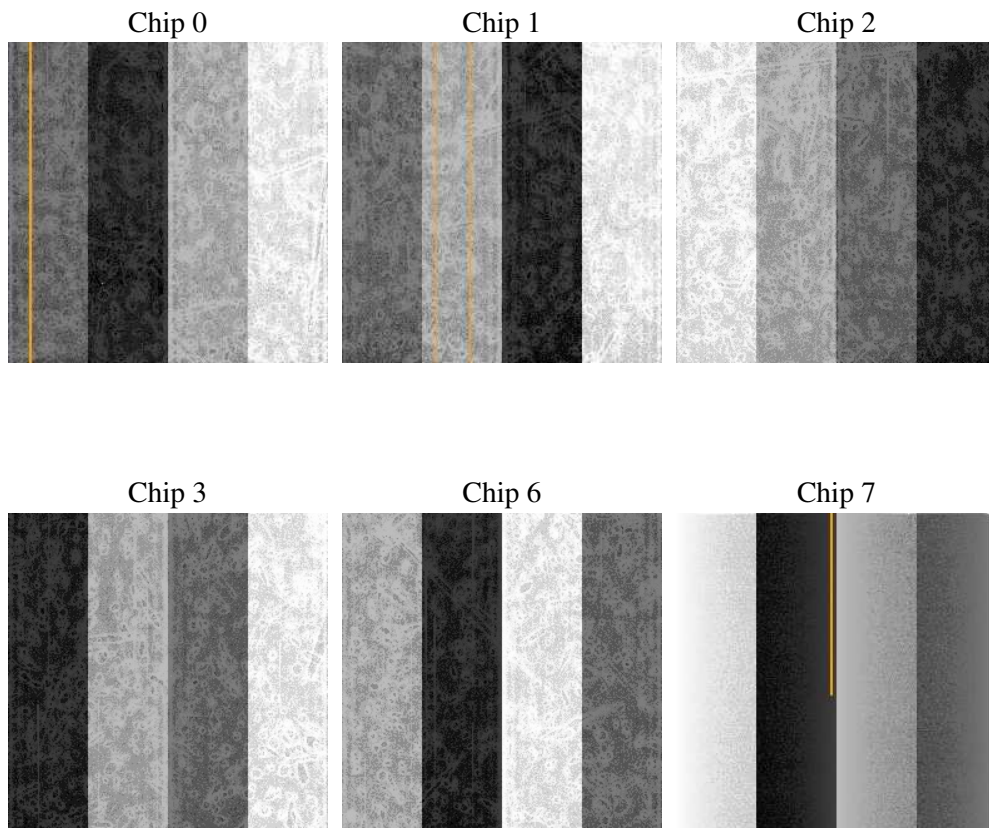
3 OBI Secondary

3.1 OBI

3.1.1 Images



3.1.2 Bias



3.1.3 Parameters

obi_num	0
ascdsver	7.6.7.2
caldsver	3.2.1
date	2006-04-28T02:09:43
revision	2

sched_exp_time	5000.000000
ontime	5470.8313716054
ontime0	5470.8313910961
ontime1	5470.8311026394
ontime2	5470.8312719166
ontime3	5470.8313716054
ontime6	5470.8309831619
ontime7	5470.8312122226
l1events	257828

3.1.4 Events

	ccd 0	ccd 1	ccd 2	ccd 3	ccd 6	ccd 7
level 1 events	38990	37627	40963	45905	40906	53437
rejected events	34008	31336	35160	36247	37140	37801
rejected %	87%	83%	85%	78%	90%	70%

	ccd 0	ccd 1	ccd 2	ccd 3	ccd 6	ccd 7
grade 0 events	3210	4208	4207	7240	1909	1197
	8%	11%	10%	15%	4%	2%
grade 1 events	26	35	45	196	20	40
	0%	0%	0%	0%	0%	0%
grade 2 events	1126	1327	1297	1710	1001	5003
	2%	3%	3%	3%	2%	9%
grade 3 events	507	520	528	707	457	1020
	1%	1%	1%	1%	1%	1%
grade 4 events	454	593	487	688	479	1023
	1%	1%	1%	1%	1%	1%
grade 5 events	1564	1645	1557	1941	1917	3567
	4%	4%	3%	4%	4%	6%
grade 6 events	866	982	785	1004	975	12073
	2%	2%	1%	2%	2%	22%
grade 7 events	31237	28317	32057	32419	34148	29514
	80%	75%	78%	70%	83%	55%

4 Point Sources

A Summary

A.1 Status

V&V Scientist	Jen Lauer
V&V Date (YYYY-MM-DD)	2006.04.28
V&V Edition	1
V&V Disposition and Status	OK
V&V Charge Time	5.1

A.2 Comments

Window constraint met.