

V&V Reference Report

L2 ASCDS Version : 8.5.1

Observation 4718 - L2 Version 3
Chandra X-Ray Center

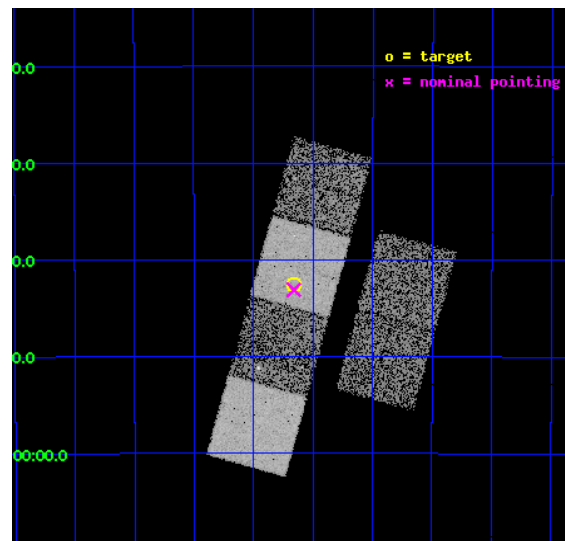
L2 Processing Date : Dec 16 2012

Contents

1	Front	2
2	OBI	3
2.1	OBI	3
2.1.1	Images	3
2.1.2	Bias	3
2.1.3	Parameters	4
2.1.4	Events	4
2.2	Compared Parameters	5
2.3	Aspect	6
2.4	Star Slots	9
2.4.1	Slot 3	9
2.4.2	Slot 4	10
2.4.3	Slot 5	11
2.4.4	Slot 6	12
2.4.5	Slot 7	13
2.5	FID Slots	14
2.5.1	Slot 0	14
2.5.2	Slot 1	15
2.5.3	Slot 2	16
A	Summary	17
A.1	Status	17
A.2	Comments	17

1 Front

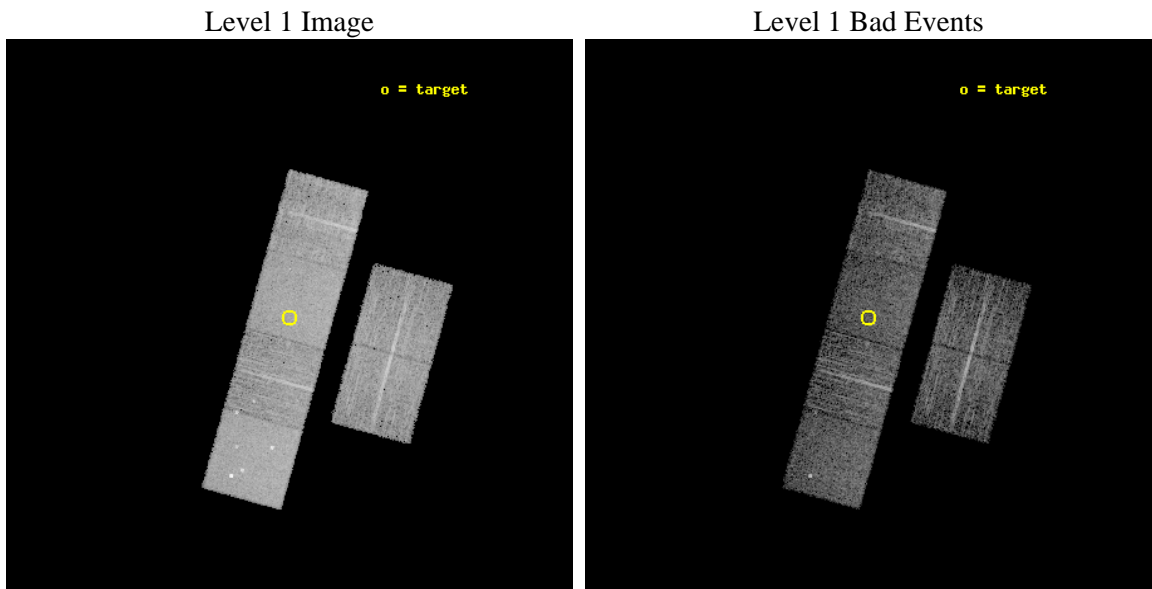
seq_num	600373	Sequence number
obs_id	4718	Observation id
title	Using the Sculptor Dwarf Spheroidal Galaxy to Constrain X-ray Binary Production in Population II	Proposal title
observer	Dr Thomas Maccarone	Principal investigator
object	SCULPTOR DWARF SPHEROIDAL	Source name
dtcycle	0	
cycle	P	events from which exps? Prim/Second/Both
ra_targ	15.039167	Observer's specified target RA [deg]
dec_targ	-33.708889	Observer's specified target Dec [deg]
ra_nom	15.040240982437	Nominal RA [deg]
dec_nom	-33.718499833472	Nominal Dec [deg]
roll_nom	285.50292153966	Nominal Roll [deg]
revision	3	Processing version of data
ontime	6137.5999771357	Sum of GTIs [s]
livetime	6059.8819906061	Livetime [s]
ontime2	6137.5999771357	Sum of GTIs [s]
ontime3	6137.5999771357	Sum of GTIs [s]
ontime5	6137.5999771357	Sum of GTIs [s]
ontime6	6137.5999771357	Sum of GTIs [s]
ontime7	6137.5999771357	Sum of GTIs [s]
ontime8	6137.5999771357	Sum of GTIs [s]
l2events	69757	Number of level 2 events



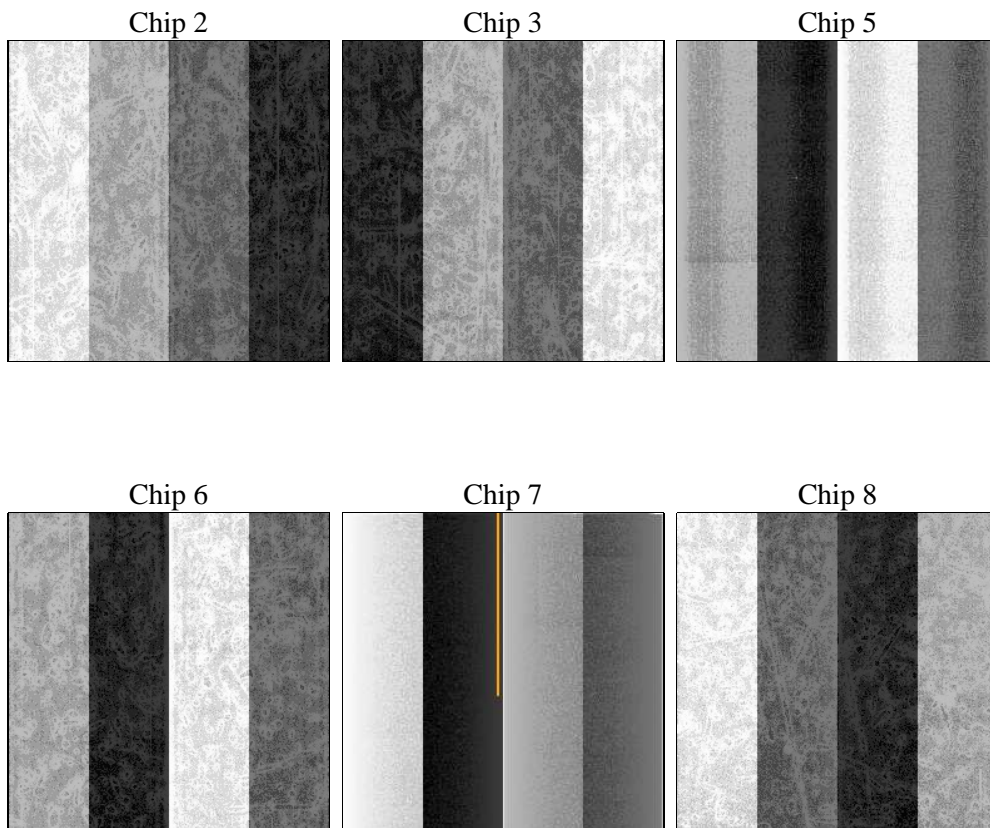
2 OBI

2.1 OBI

2.1.1 Images



2.1.2 Bias



2.1.3 Parameters

obi_num	0	Obi number	sched_exp_time	6000.000000	[s] Scheduled observation exposure time
ascdsver	8.5.1	Processing system revision	ontime	6137.5999771357	Sum of GTIs [s]
caldsver	4.5.5	 	ontime2	6137.5999771357	Sum of GTIs [s]
date	2012-12-15T22:36:36	Date and time of file creation	ontime3	6137.5999771357	Sum of GTIs [s]
revision	3	Processing version of data	ontime5	6137.5999771357	Sum of GTIs [s]
			ontime6	6137.5999771357	Sum of GTIs [s]
			ontime7	6137.5999771357	Sum of GTIs [s]
			ontime8	6137.5999771357	Sum of GTIs [s]
			l1events	309771	Number of level 1 events

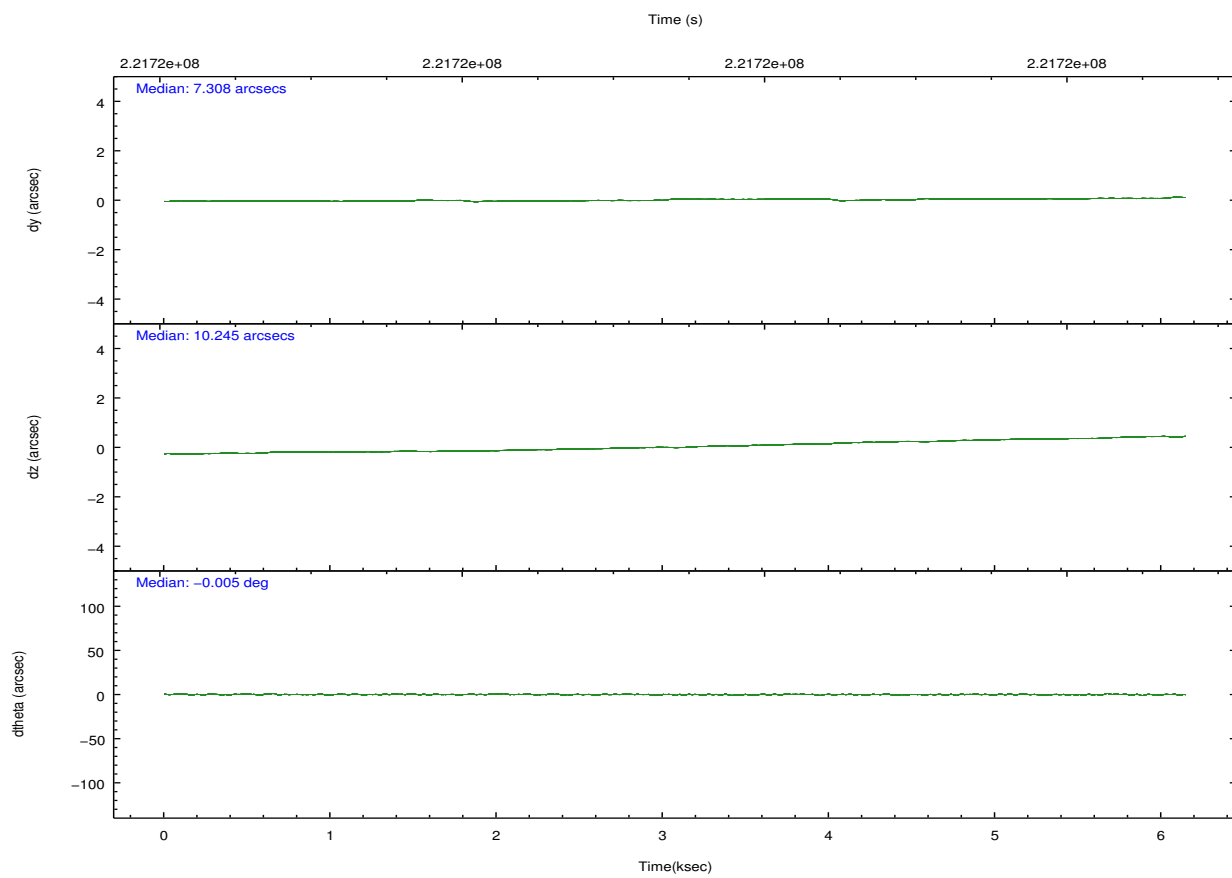
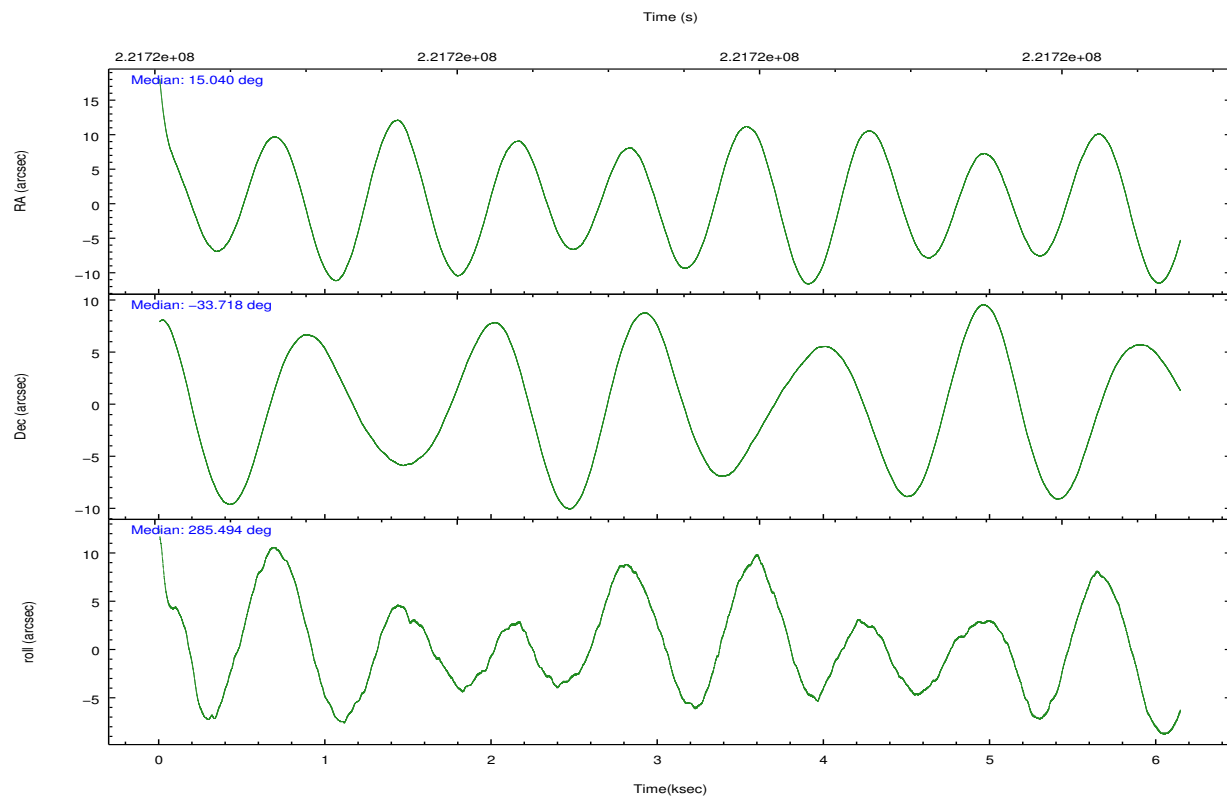
2.1.4 Events

	ccd 2	ccd 3	ccd 5	ccd 6	ccd 7	ccd 8		ccd 2	ccd 3	ccd 5	ccd 6	ccd 7	ccd 8
level 1 events	42649	40989	68095	45021	59209	53808	grade 0 events	2277	2198	4553	2413	2323	3815
rejected events	37623	36137	36867	39533	34742	42446		5%	5%	6%	5%	3%	7%
rejected %	88%	88%	54%	87%	58%	78%	grade 1 events	35	24	685	21	67	39
								0%	0%	1%	0%	0%	0%
							grade 2 events	1054	918	9212	1153	4973	2428
								2%	2%	13%	2%	8%	4%
							grade 3 events	481	485	1257	508	2265	1292
								1%	1%	1%	1%	3%	2%
							grade 4 events	485	482	1185	533	2187	1162
								1%	1%	1%	1%	3%	2%
							grade 5 events	1743	1876	4929	1961	5608	2669
								4%	4%	7%	4%	9%	4%
							grade 6 events	818	888	15709	990	13227	2913
								1%	2%	23%	2%	22%	5%
							grade 7 events	35756	34118	30565	37442	28559	39490
								83%	83%	44%	83%	48%	73%

2.2 Compared Parameters

Parameter	Planned	Actual	Parameter	Planned	Actual
Instrument	ACIS	ACIS	Obspar format version number	7	7
Detector	ACIS-235678	ACIS-235678	Obspar file type	PREDICTED	ACTUAL
Grating	NONE	NONE	Obspar update status	NONE	UPDATED
Data mode	VFAINT	VFAINT	Number of optional ACIS chips dropped	0	0
Observation mode	POINTING	POINTING	On-chip summing requested	N	N
[deg] Pointing RA	15.016607	15.0402409824375	Subarray requested	NONE	NONE
[deg] Pointing Dec	-33.699695	-33.71849983347221	Alternating exposures requested	N	N
[deg] Pointing Roll	285.333175	285.5029215396646	[s] Primary exposure time	0.000000	3.2
[mm] SIM focus pos	-0.684267	-0.6828225247311905			
[mm] SIM defocus	0	0.001444936568705701			
[mm] SIM translation stage pos	-190.132523	-190.1400660498719			
[mm] SIM translation stage offset	0	0.00754346686406393			
[s] Observation start time (MET)	221718486.184000	221717377.79772			
Observation start date	2005-01-10T04:27:02	2005-01-10T04:09:37			
[s] Observation end time (MET)	221724486.184000	221725389.19809			
Observation end date	2005-01-10T06:07:02	2005-01-10T06:23:09			
Read mode	TIMED	TIMED			

2.3 Aspect

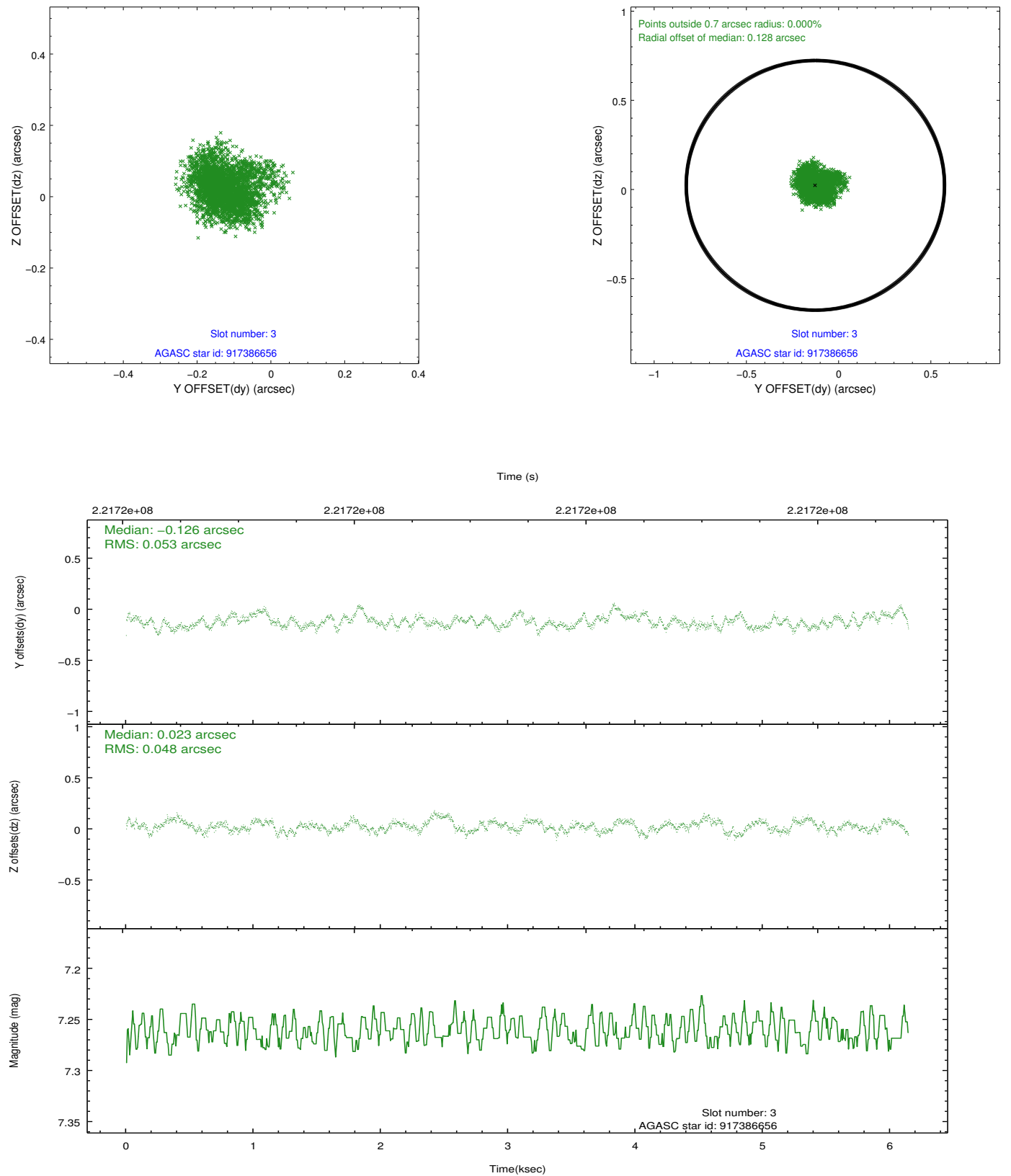


Slot Statistics

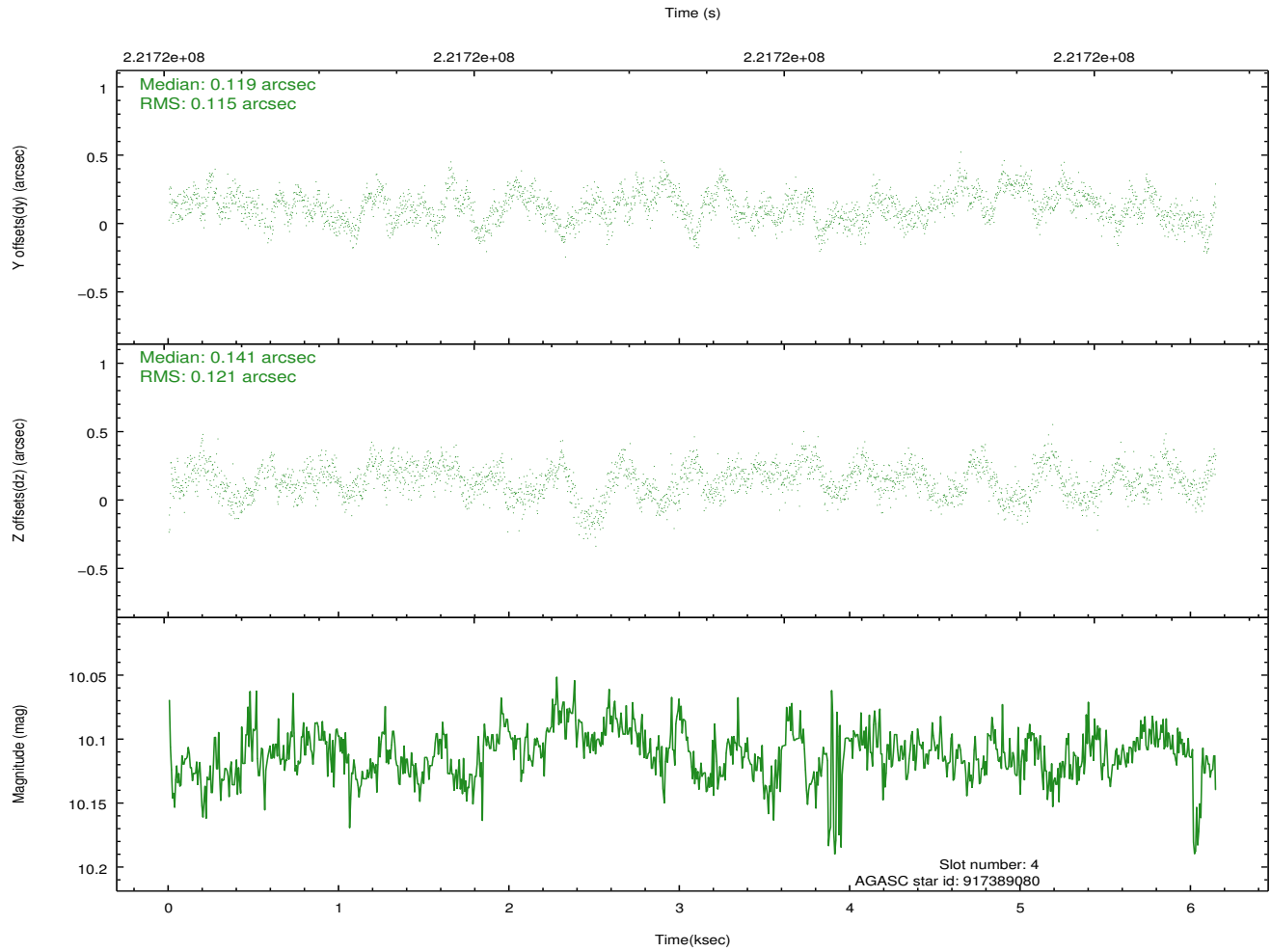
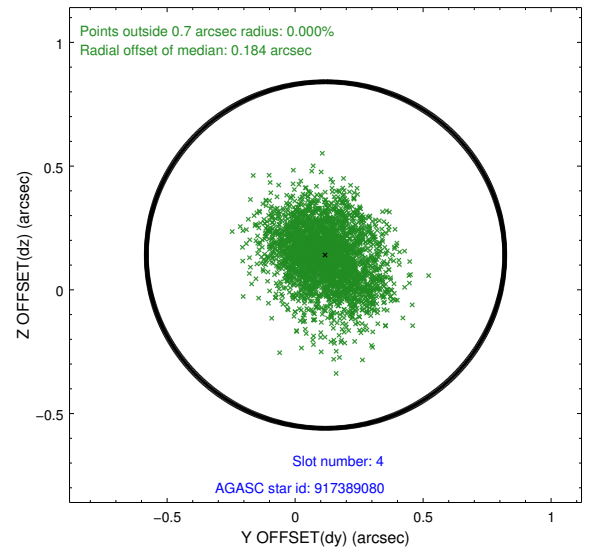
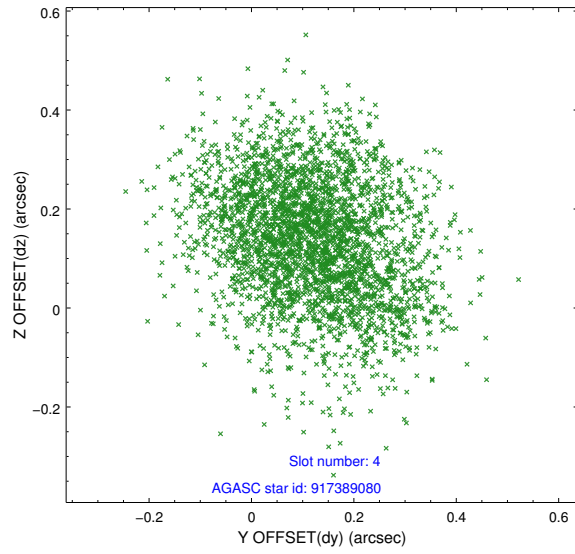
slot	status	id	mag	n_pts	med_dy	med_dz	dr1	dr2	ra	dec	mean_y	mean_z
0	FID	ACIS-S-2	7.10	1499	-0.055	-0.027	0.007	0.011	0.000000	0.000000	-760.09	-1731.59
1	FID	ACIS-S-4	7.20	1499	0.101	0.034	0.005	0.009	0.000000	0.000000	2152.86	176.03
2	FID	ACIS-S-5	7.23	1499	-0.077	0.002	0.006	0.011	0.000000	0.000000	-1811.76	170.67
3	GUIDE	917386656	7.26	2998	-0.126	0.023	0.077	0.123	15.342124	-33.359890	-919.61	1267.32
4	GUIDE	917389080	10.11	2951	0.119	0.141	0.178	0.283	15.722484	-33.662555	437.12	2074.17
5	GUIDE	917389288	9.56	2997	0.002	0.057	0.107	0.173	15.394706	-33.185862	-1480.53	1588.05
6	GUIDE	917390768	9.87	2996	-0.162	-0.070	0.101	0.169	14.870561	-33.104152	-2184.25	142.57
7	GUIDE	917651048	9.66	2997	0.161	-0.147	0.117	0.187	14.655628	-34.424089	2233.34	-1723.35

2.4 Star Slots

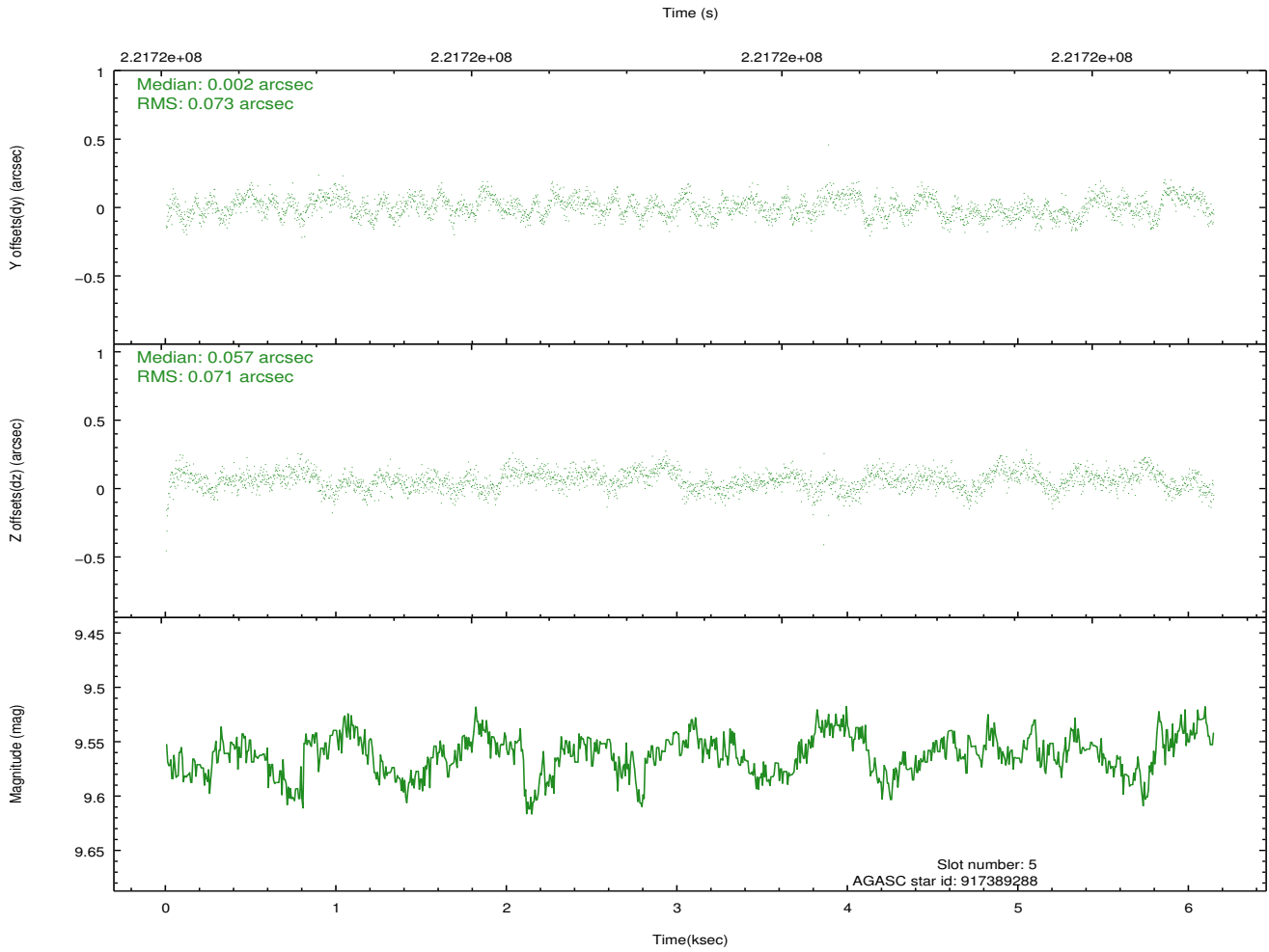
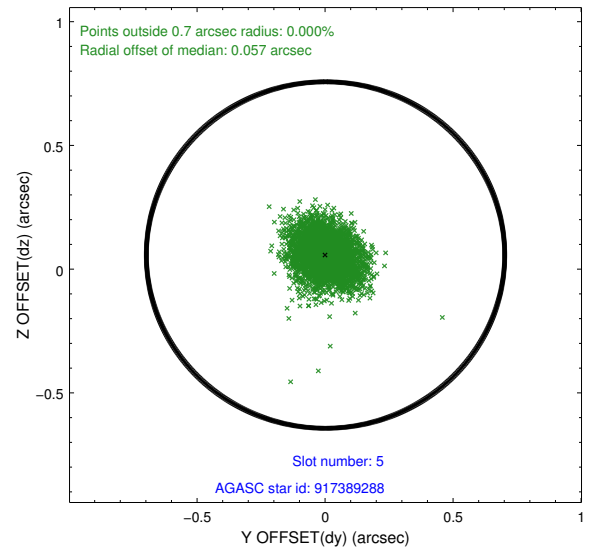
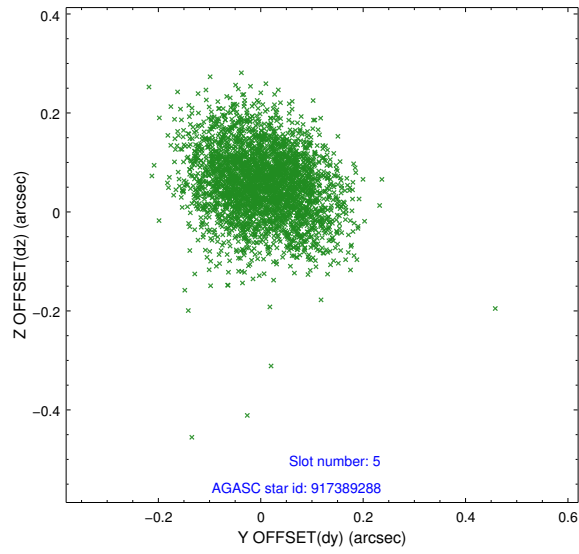
2.4.1 Slot 3



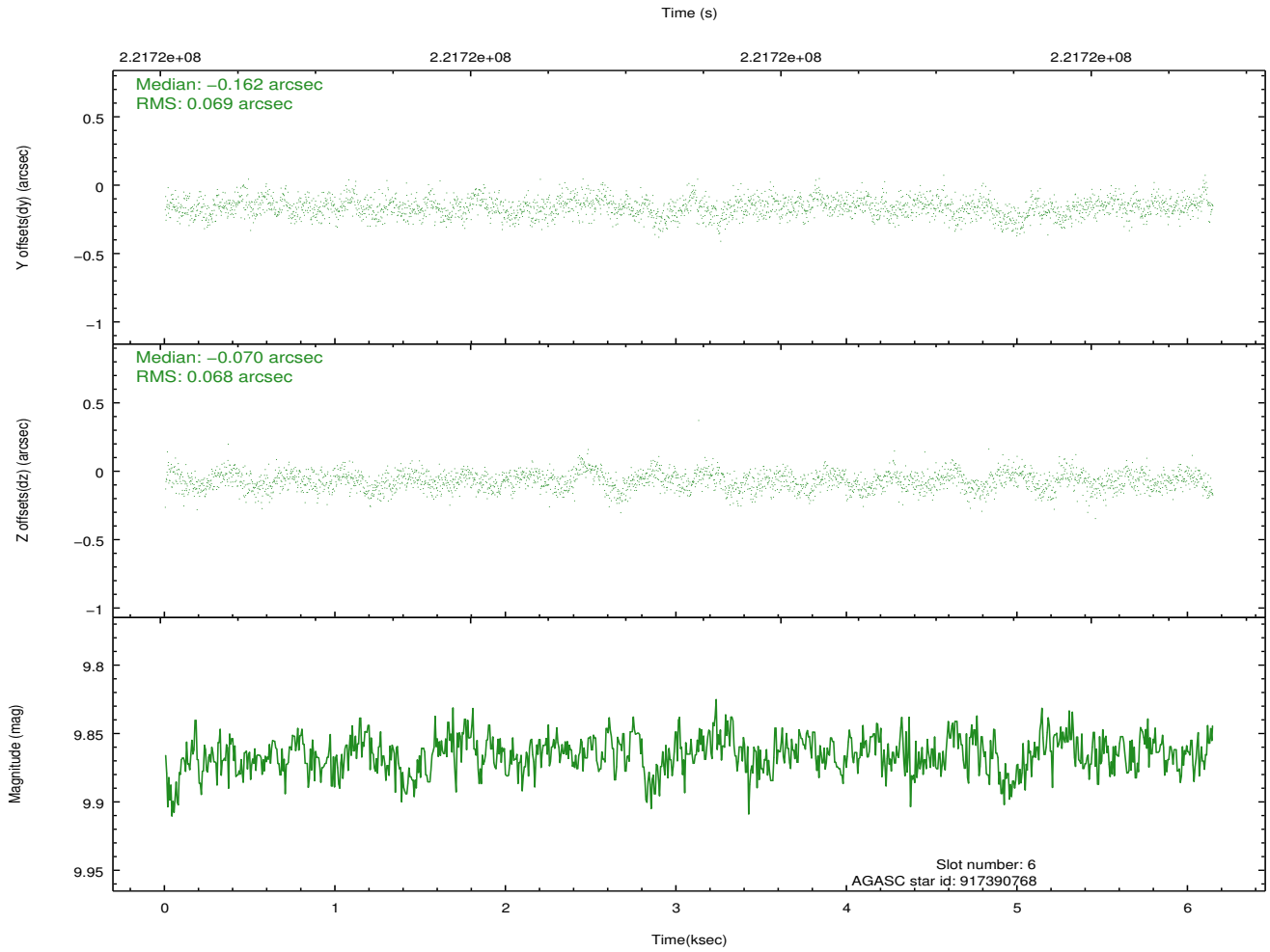
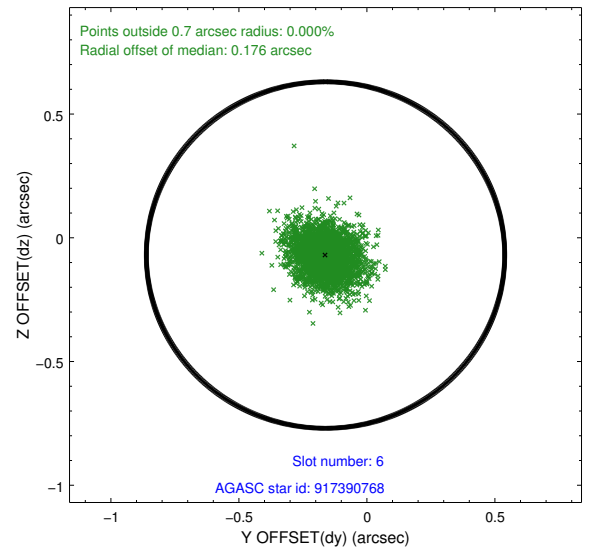
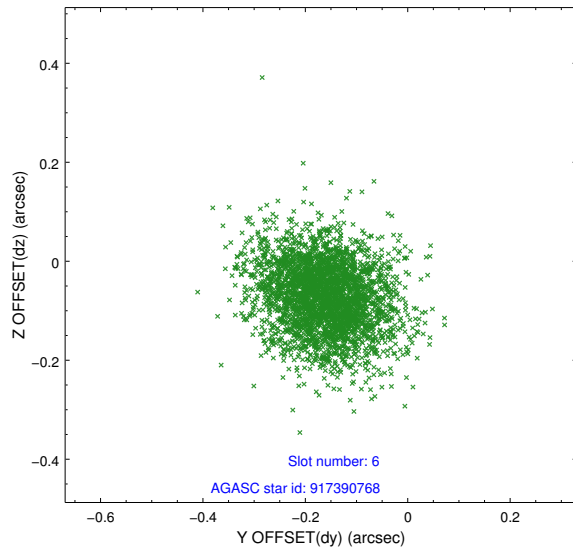
2.4.2 Slot 4



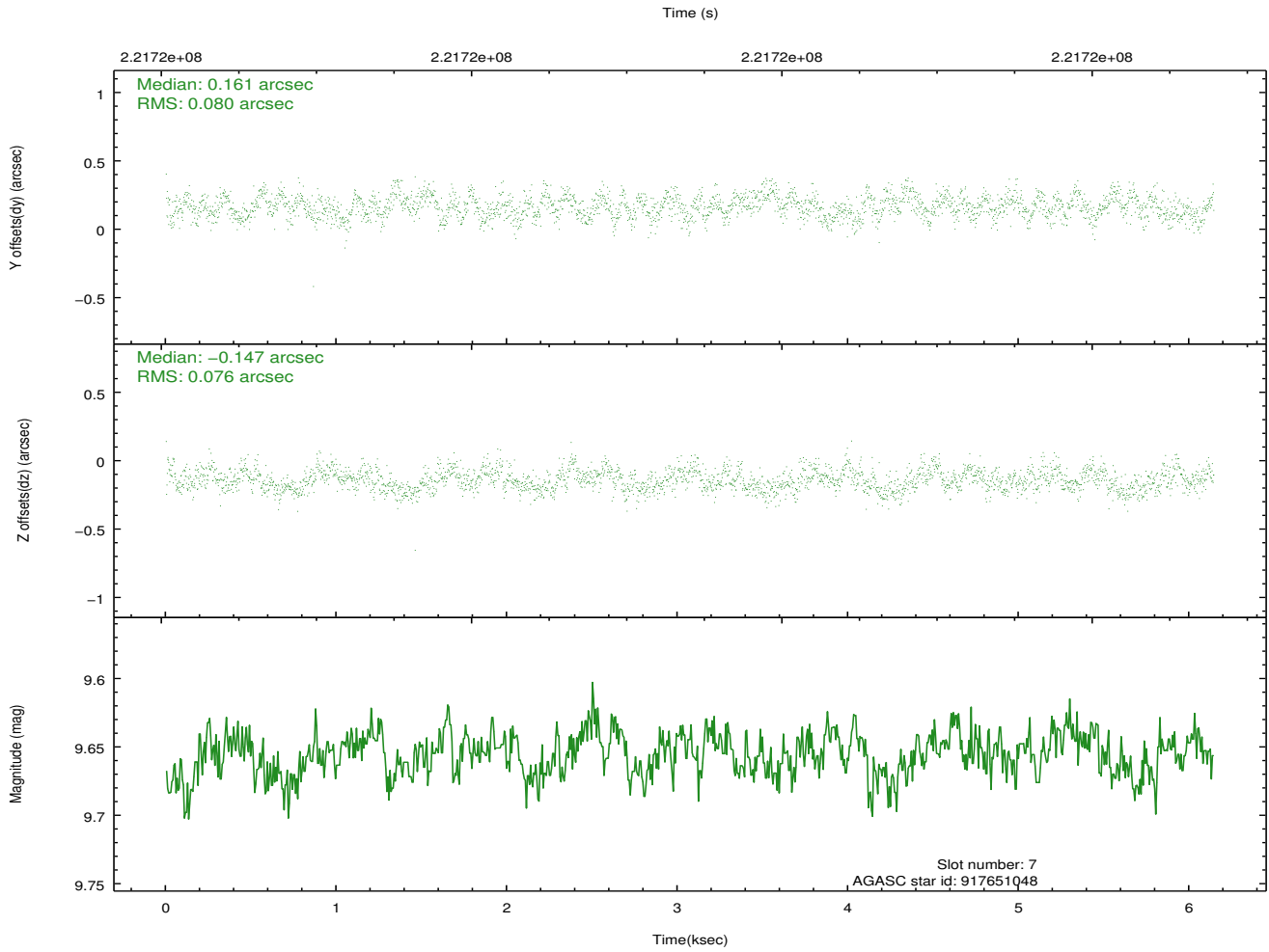
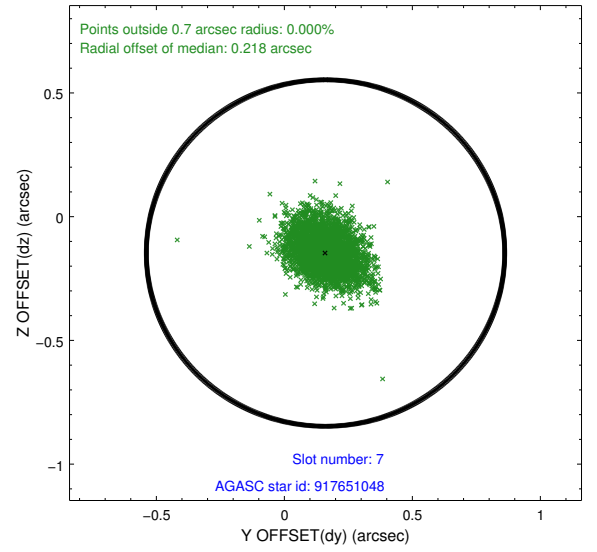
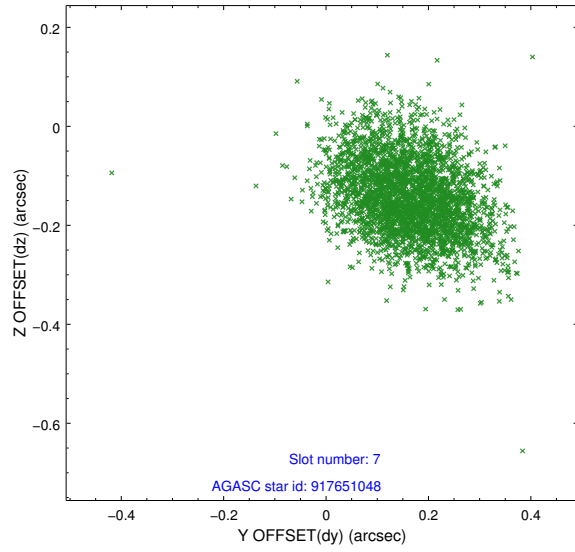
2.4.3 Slot 5



2.4.4 Slot 6

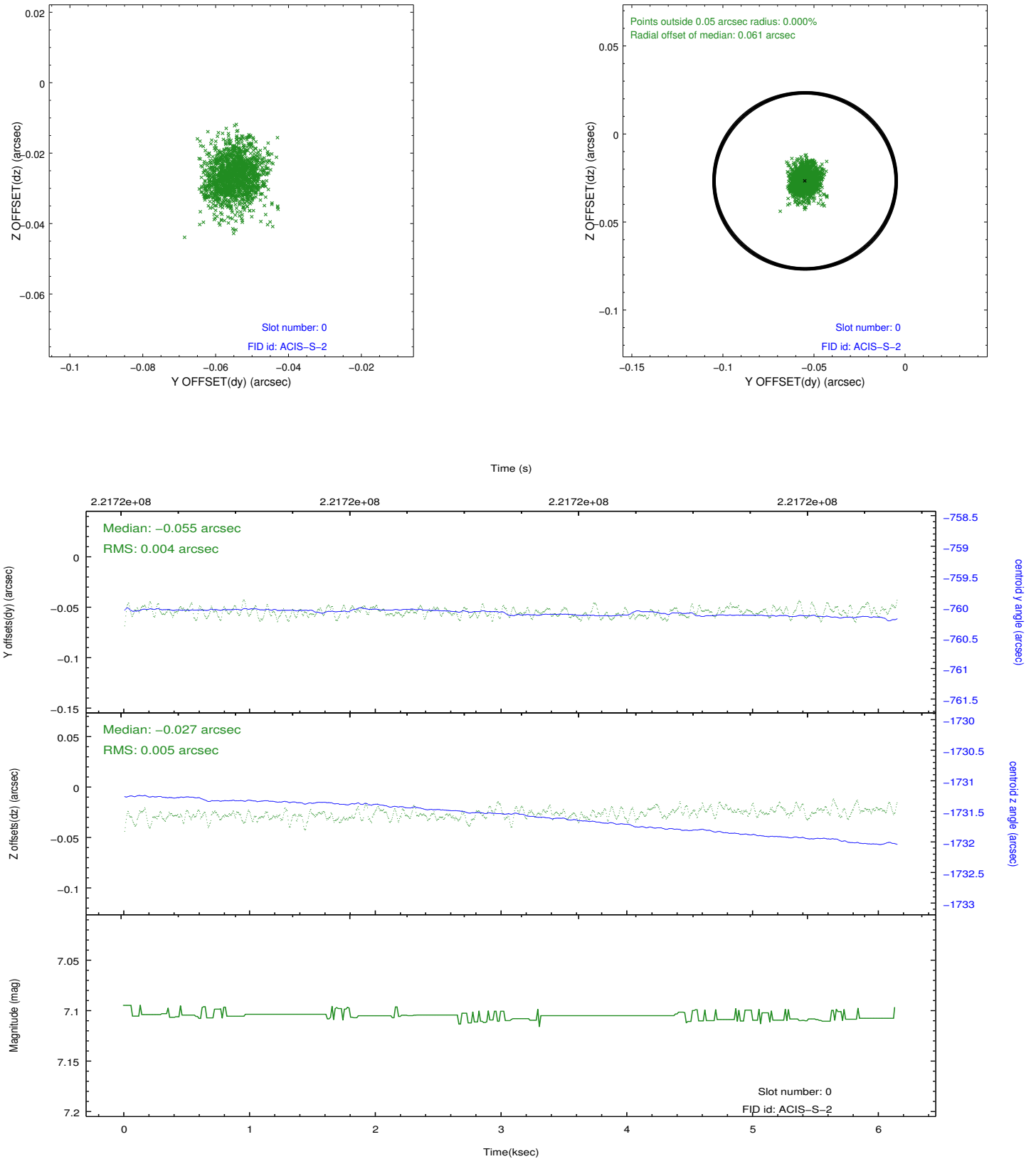


2.4.5 Slot 7

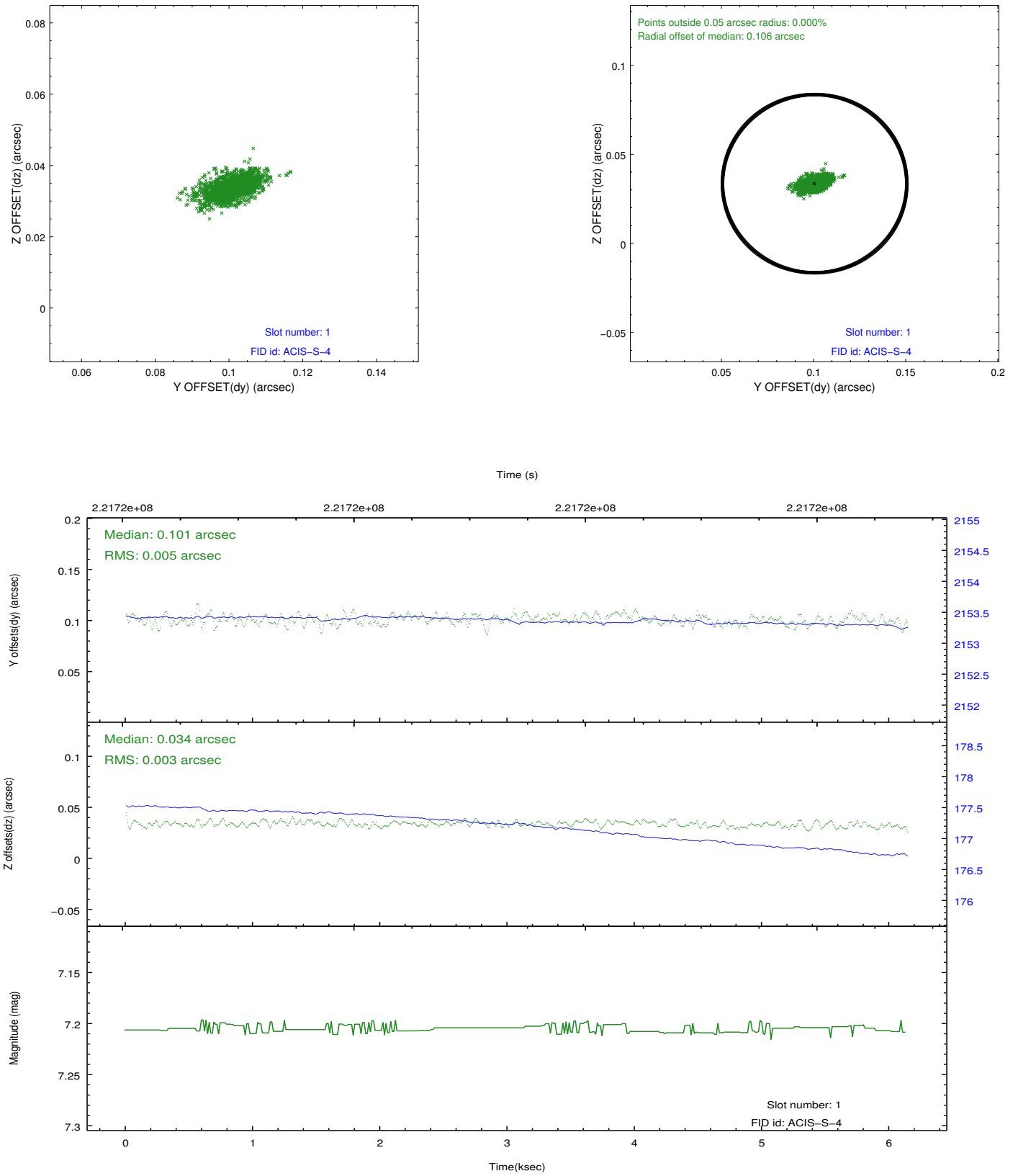


2.5 FID Slots

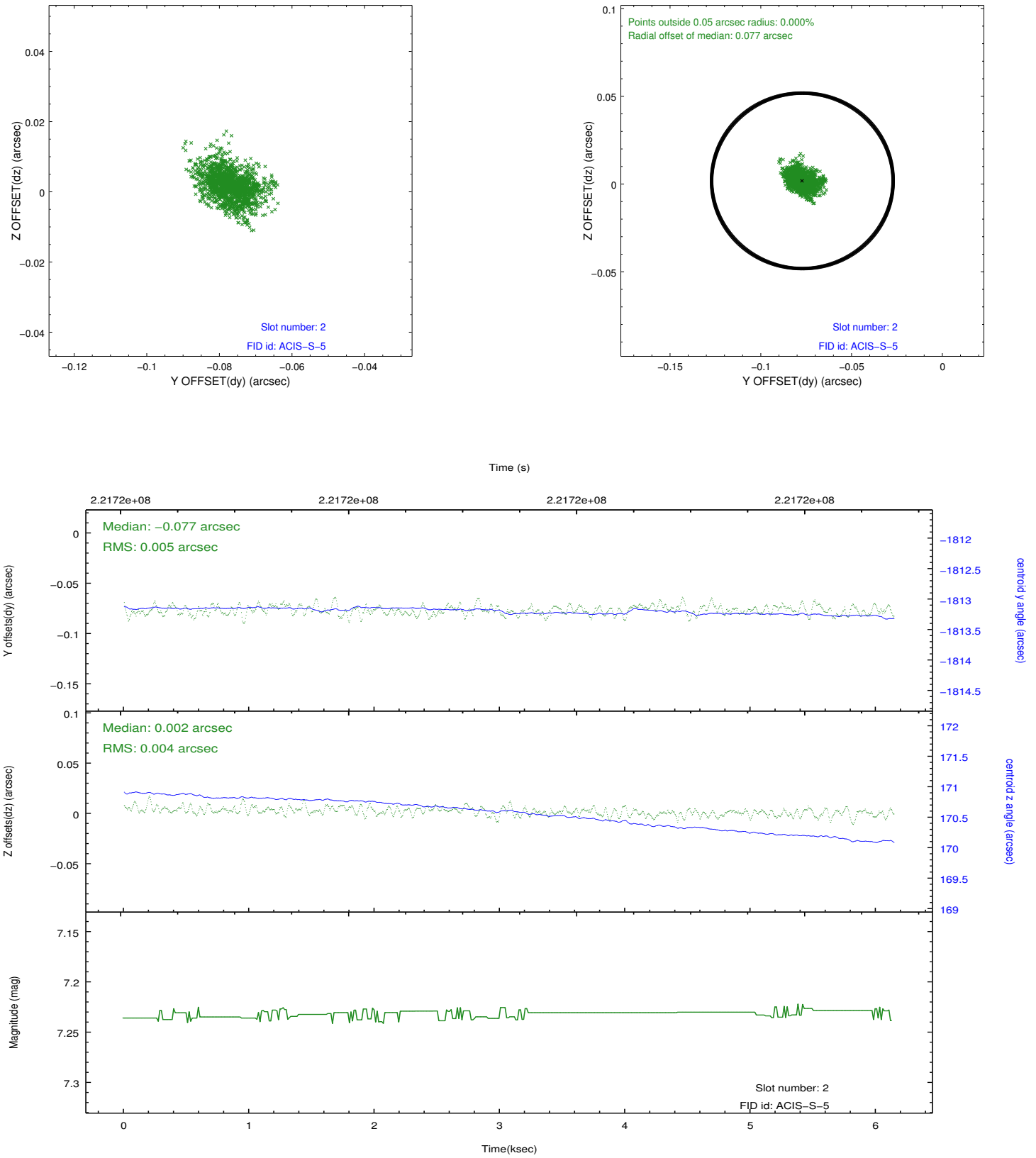
2.5.1 Slot 0



2.5.2 Slot 1



2.5.3 Slot 2



A Summary

A.1 Status

V&V Scientist	Jen Lauer
V&V Date (YYYY-MM-DD)	2013.01.08
V&V Edition	1
V&V Disposition and Status	OK
V&V Charge Time	6.137599

A.2 Comments

Joint Proposal: NOAO