

V&V Reference Report

L2 ASCDS Version : 7.6.7

Observation 4718 - L2 Version 002
Chandra X-Ray Center

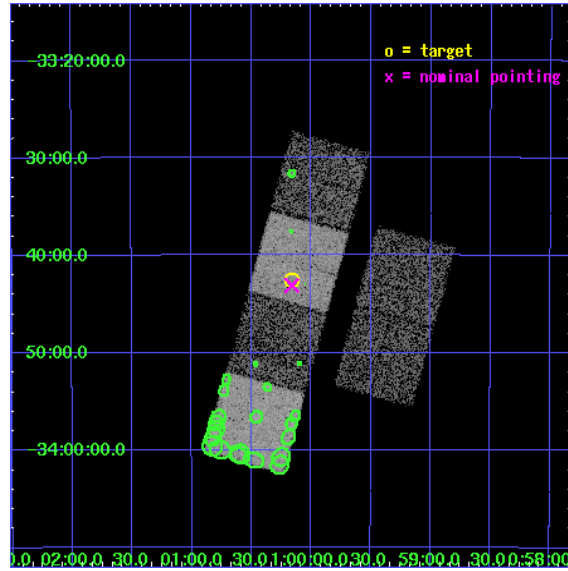
L2 Processing Date: Feb 16 2006

Contents

1	Front	2
2	OBI	3
2.1	OBI	3
2.1.1	Images	3
2.1.2	Bias	3
2.1.3	Parameters	4
2.1.4	Events	4
2.2	Compared Parameters	5
2.3	Aspect	6
2.4	Star Slots	9
2.4.1	Slot 3	9
2.4.2	Slot 4	10
2.4.3	Slot 5	11
2.4.4	Slot 6	12
2.4.5	Slot 7	13
2.5	FID Slots	14
2.5.1	Slot 0	14
2.5.2	Slot 1	15
2.5.3	Slot 2	16
3	Point Sources	17
A	Summary	18
A.1	Status	18
A.2	Comments	18

1 Front

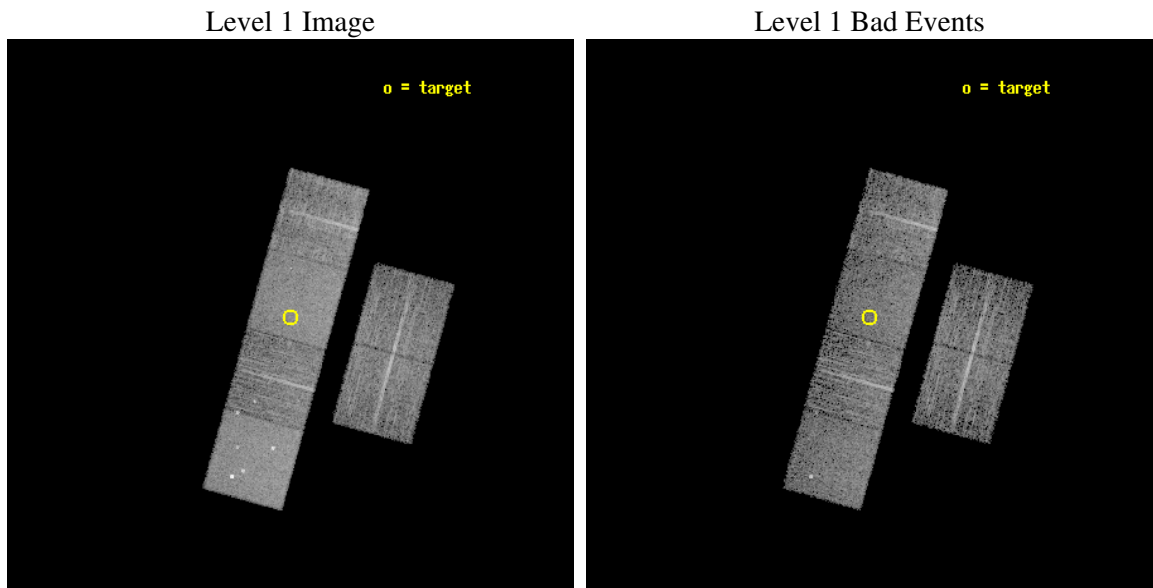
seq_num	600373
obs_id	4718
title	Using the Sculptor Dwarf Spheroidal Galaxy to Constrain X-ray Binary Production in Population II
observer	Dr. Thomas Maccarone
object	SCULPTOR DWARF SPHEROIDAL
dtcycle	0
cycle	P
ra_targ	15.039167
dec_targ	-33.708889
ra_nom	15.040232144166
dec_nom	-33.718473046141
roll_nom	285.50291662664
revision	2
ontime	6137.5999771357
livetime	6059.8819906061
ontime2	6137.5999771357
ontime3	6137.5999771357
ontime5	6137.5999771357
ontime6	6137.5999771357
ontime7	6137.5999771357
ontime8	6137.5999771357
l2events	67099



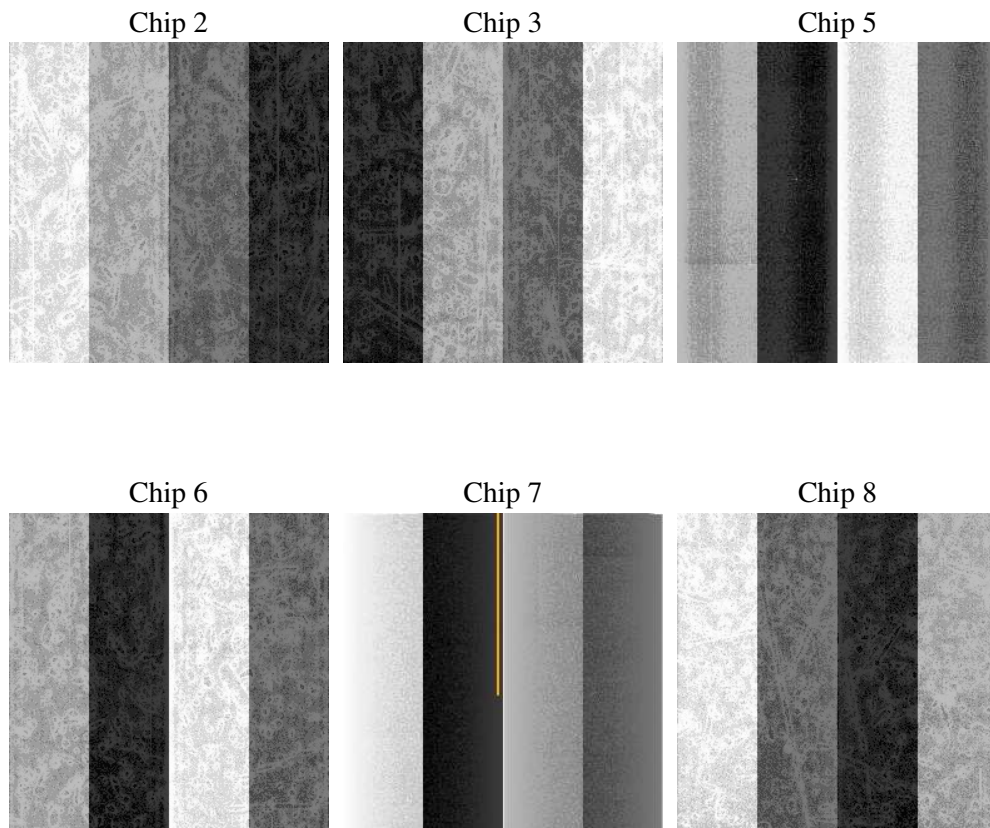
2 OBI

2.1 OBI

2.1.1 Images



2.1.2 Bias



2.1.3 Parameters

obi_num	0
ascdsver	7.6.7
caldbver	3.2.1
date	2006-02-16T17:15:55
revision	2

sched_exp_time	6000.000000
ontime	6258.3842223287
ontime2	6258.3842024505
ontime3	6258.3842223287
ontime5	6258.3842223287
ontime6	6258.3842223287
ontime7	6258.3842223287
ontime8	6258.3842223287
l1events	309771

2.1.4 Events

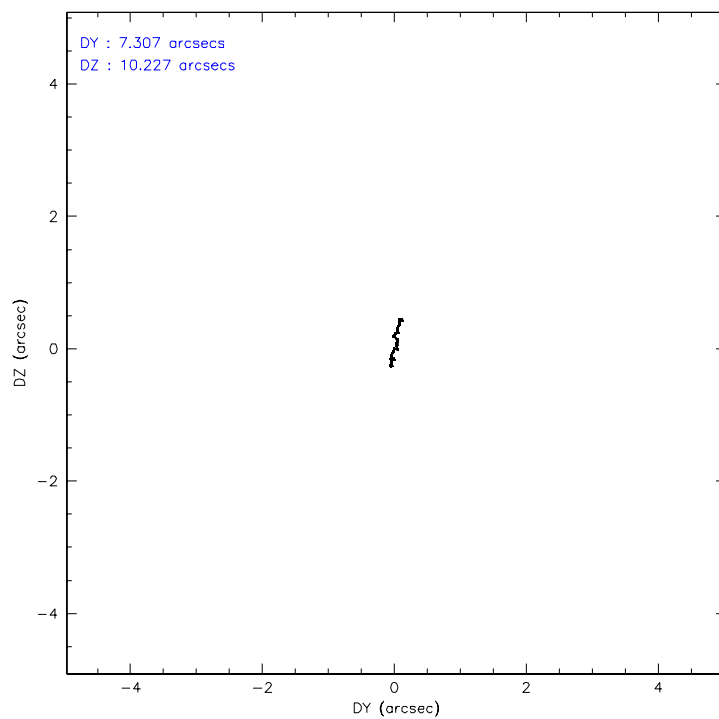
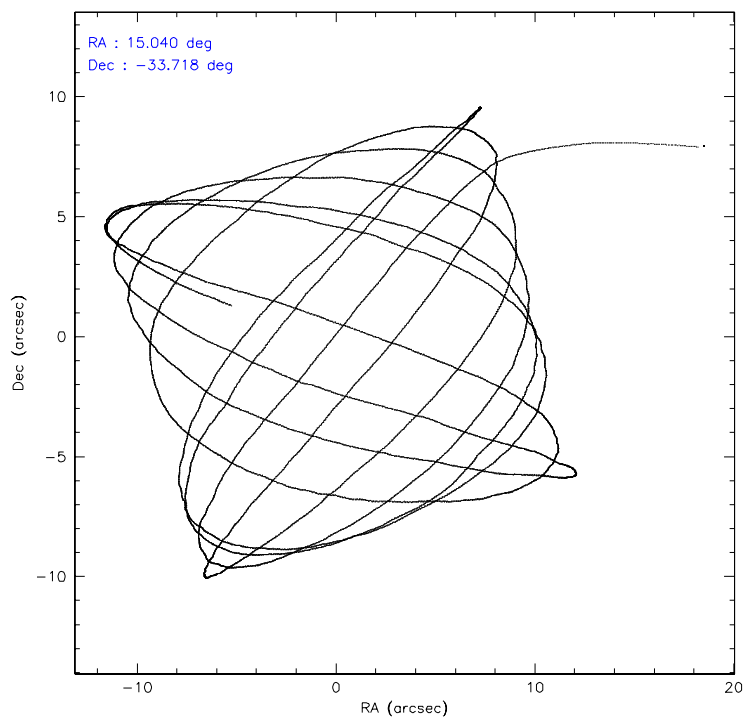
	ccd 2	ccd 3	ccd 5	ccd 6	ccd 7	ccd 8
level 1 events	42649	40989	68095	45021	59209	53808
rejected events	37620	36134	37824	39531	36669	42444
rejected %	88%	88%	55%	87%	61%	78%

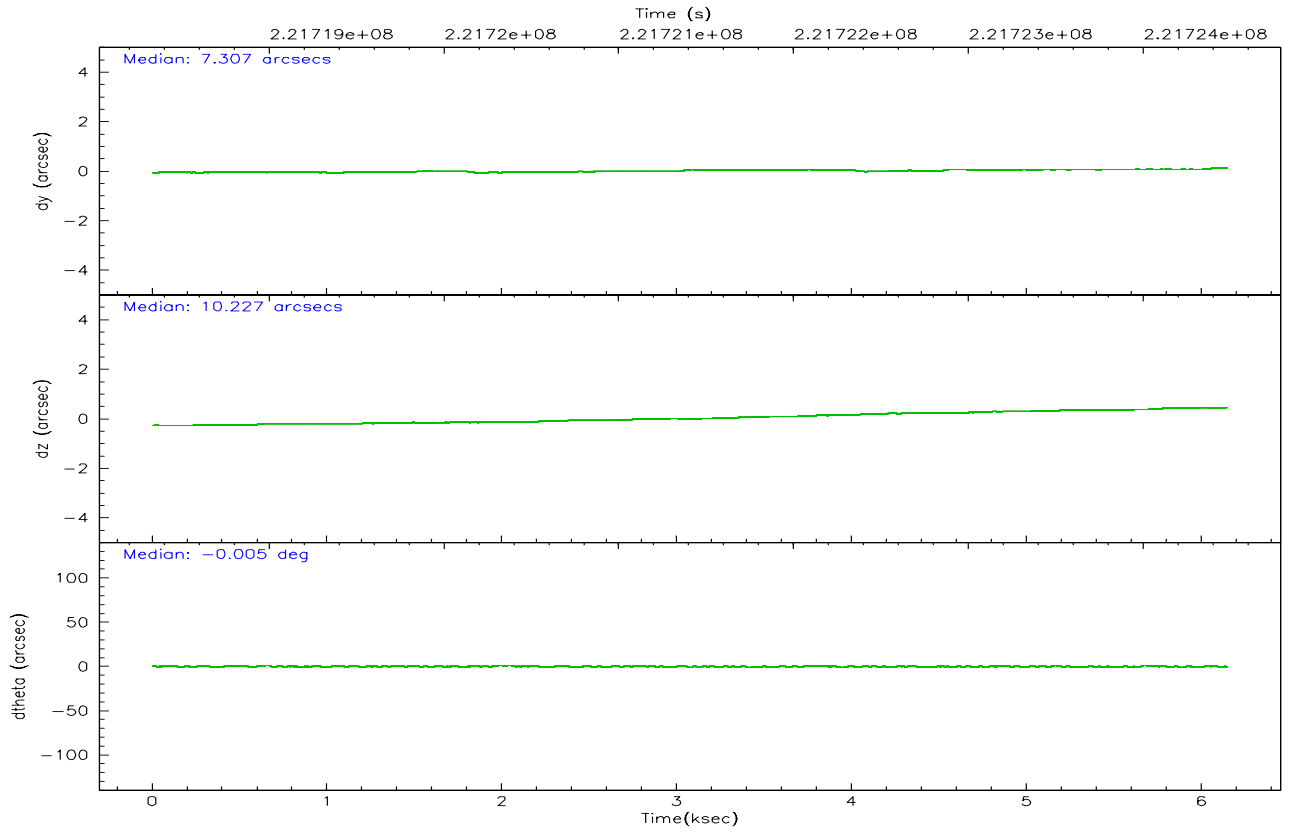
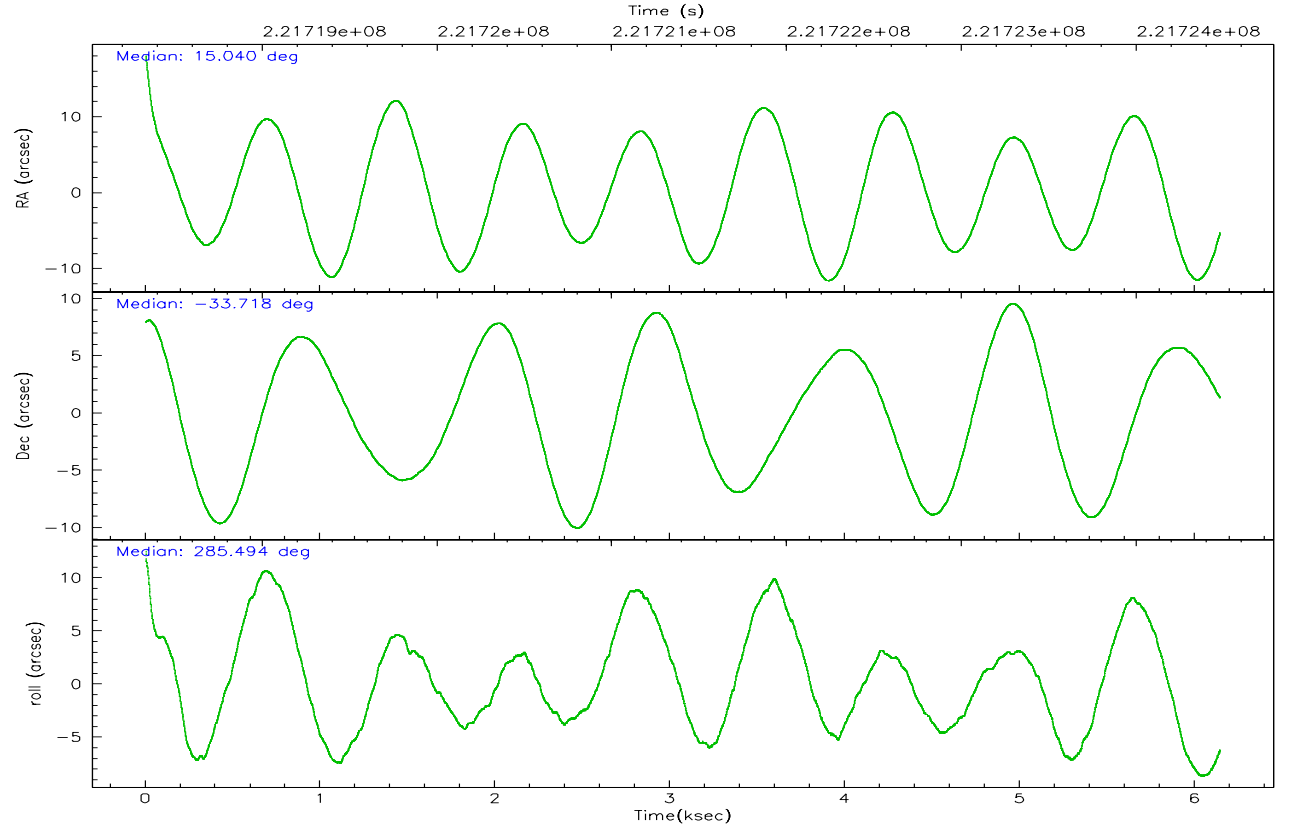
	ccd 2	ccd 3	ccd 5	ccd 6	ccd 7	ccd 8
grade 0 events	2277	2198	3836	2413	1378	3815
	5%	5%	5%	5%	2%	7%
grade 1 events	35	24	646	21	38	39
	0%	0%	0%	0%	0%	0%
grade 2 events	1054	918	9306	1153	5751	2428
	2%	2%	13%	2%	9%	4%
grade 3 events	481	485	640	508	1167	1292
	1%	1%	0%	1%	1%	2%
grade 4 events	485	482	622	533	1088	1162
	1%	1%	0%	1%	1%	2%
grade 5 events	1743	1876	3158	1961	3867	2669
	4%	4%	4%	4%	6%	4%
grade 6 events	818	888	16515	990	13611	2913
	1%	2%	24%	2%	22%	5%
grade 7 events	35756	34118	33372	37442	32309	39490
	83%	83%	49%	83%	54%	73%

2.2 Compared Parameters

Parameter	Planned	Actual	Parameter	Planned	Actual
Instrument	ACIS	ACIS	Obspar format version number	6	6
Detector	ACIS-235678	ACIS-235678	Obspar file type	PREDICTED	ACTUAL
Grating	NONE	NONE	Obspar update status	NONE	UPDATED
Data mode	VFAINT	VFAINT	On-chip summing requested	N	N
Observation mode	POINTING	POINTING	Subarray requested	NONE	NONE
Pointing RA	15.016607	15.04023214416643	Alternating exposures requested	N	N
Pointing Dec	-33.699695	-33.71847304614143	Primary exposure time	0.000000	3.2
Pointing Roll	285.333175	285.502916626641			
SIM focus pos (mm)	-0.684267	-0.6828225247311905			
SIM defocus (mm)	0	0.001444936568705701			
SIM translation stage pos (mm)	-190.132523	-190.1400660498719			
SIM translation stage offset (mm)	0	0.00754346686406393			
Observation start time	221718486.184000	221717377.79772			
Observation start date	2005-01-10T04:27:02	2005-01-10T04:09:37			
Observation end time	221724486.184000	221725389.19809			
Observation end date	2005-01-10T06:07:02	2005-01-10T06:23:09			
Read mode	TIMED	TIMED			

2.3 Aspect



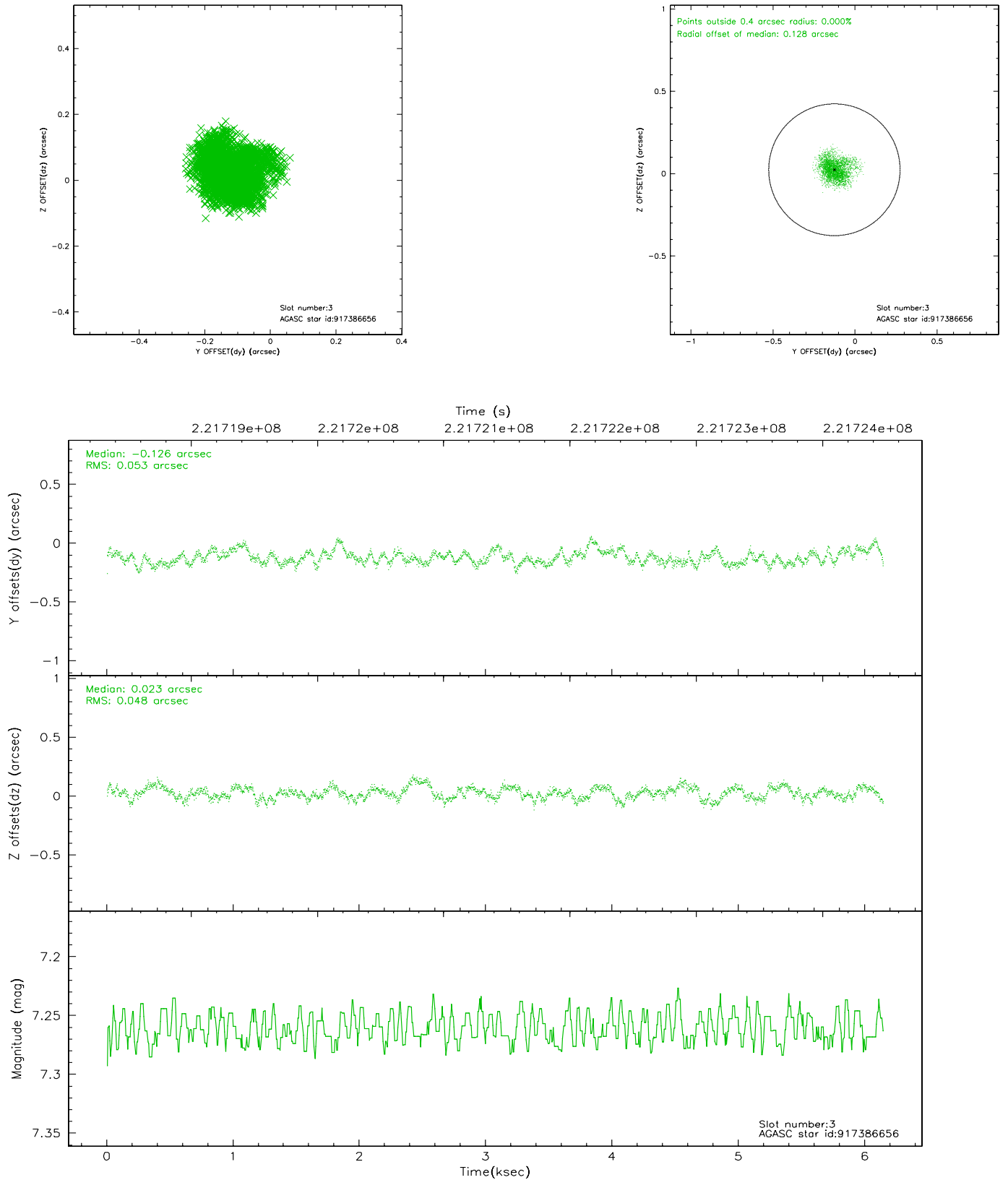


Slot Statistics

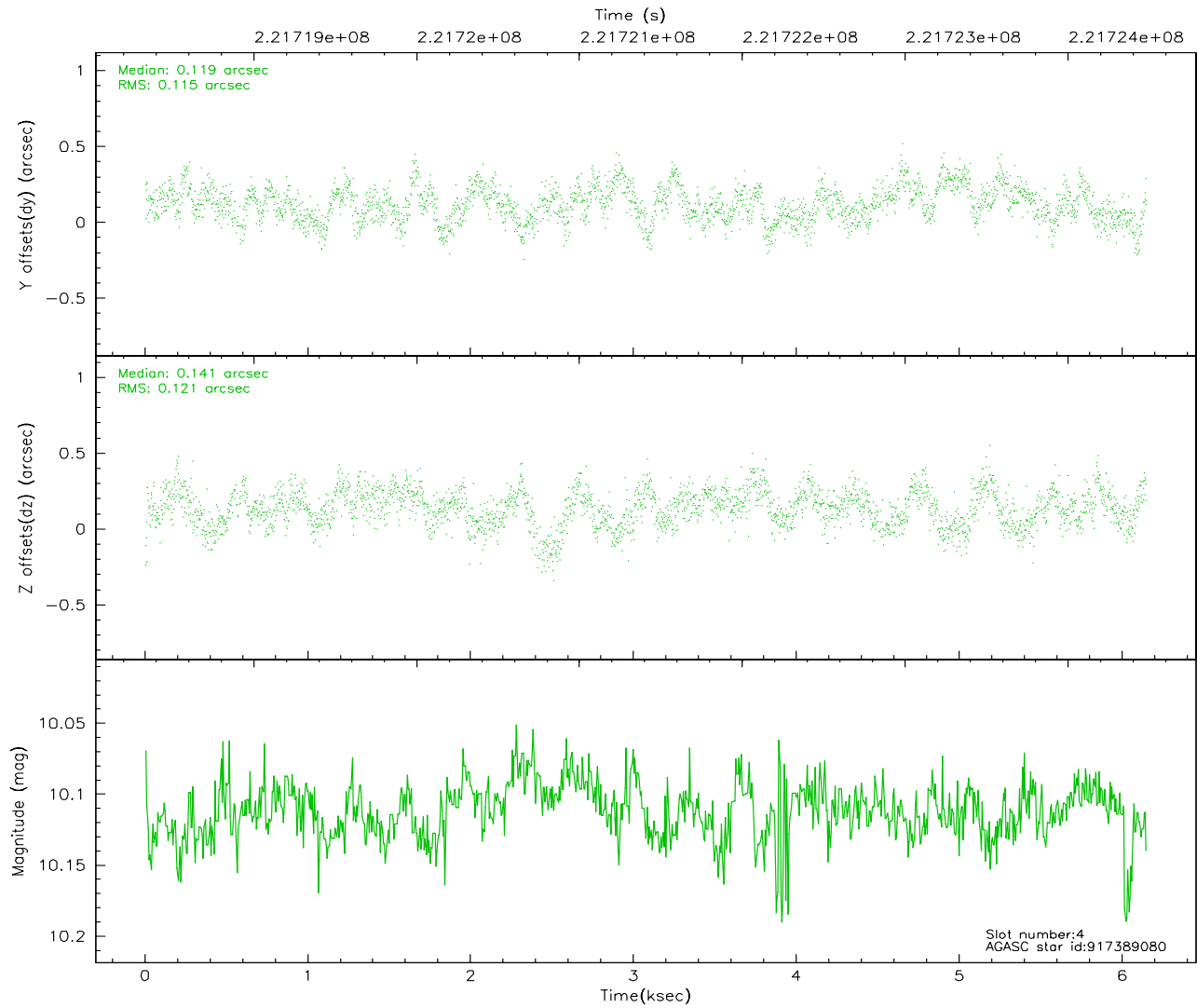
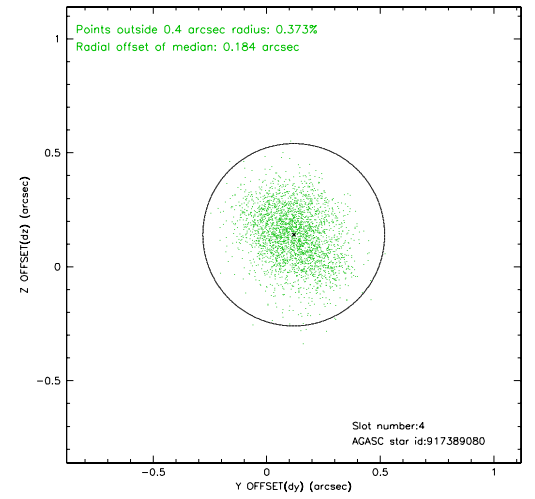
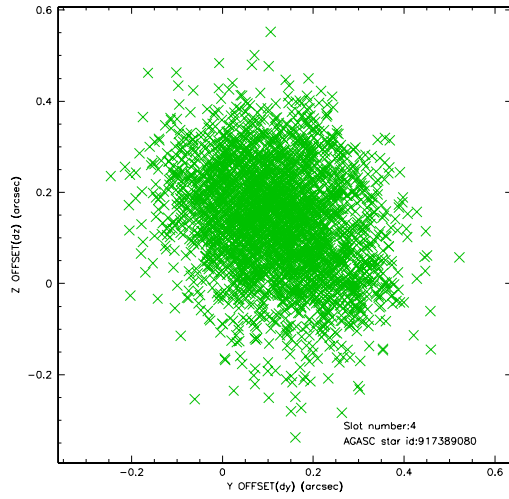
slot	status	id	mag	n_pts	med_dy	med_dz	dr1	dr2	ra	dec	mean_y	mean_z
0	FID	ACIS-S-2	7.10	1499	-0.044	-0.003	0.007	0.011	0.000000	0.000000	-760.08	-1731.55
1	FID	ACIS-S-4	7.20	1499	0.059	0.022	0.005	0.009	0.000000	0.000000	2152.82	176.03
2	FID	ACIS-S-5	7.23	1499	-0.046	-0.010	0.006	0.010	0.000000	0.000000	-1811.73	170.67
3	GUIDE	917386656	7.26	2998	-0.126	0.023	0.077	0.123	15.342124	-33.359890	-919.61	1267.32
4	GUIDE	917389080	10.11	2951	0.119	0.141	0.178	0.283	15.722484	-33.662555	437.12	2074.17
5	GUIDE	917389288	9.56	2997	0.002	0.057	0.107	0.173	15.394706	-33.185862	-1480.53	1588.05
6	GUIDE	917390768	9.87	2996	-0.162	-0.070	0.101	0.169	14.870561	-33.104152	-2184.25	142.57
7	GUIDE	917651048	9.66	2997	0.161	-0.147	0.117	0.187	14.655628	-34.424089	2233.34	-1723.35

2.4 Star Slots

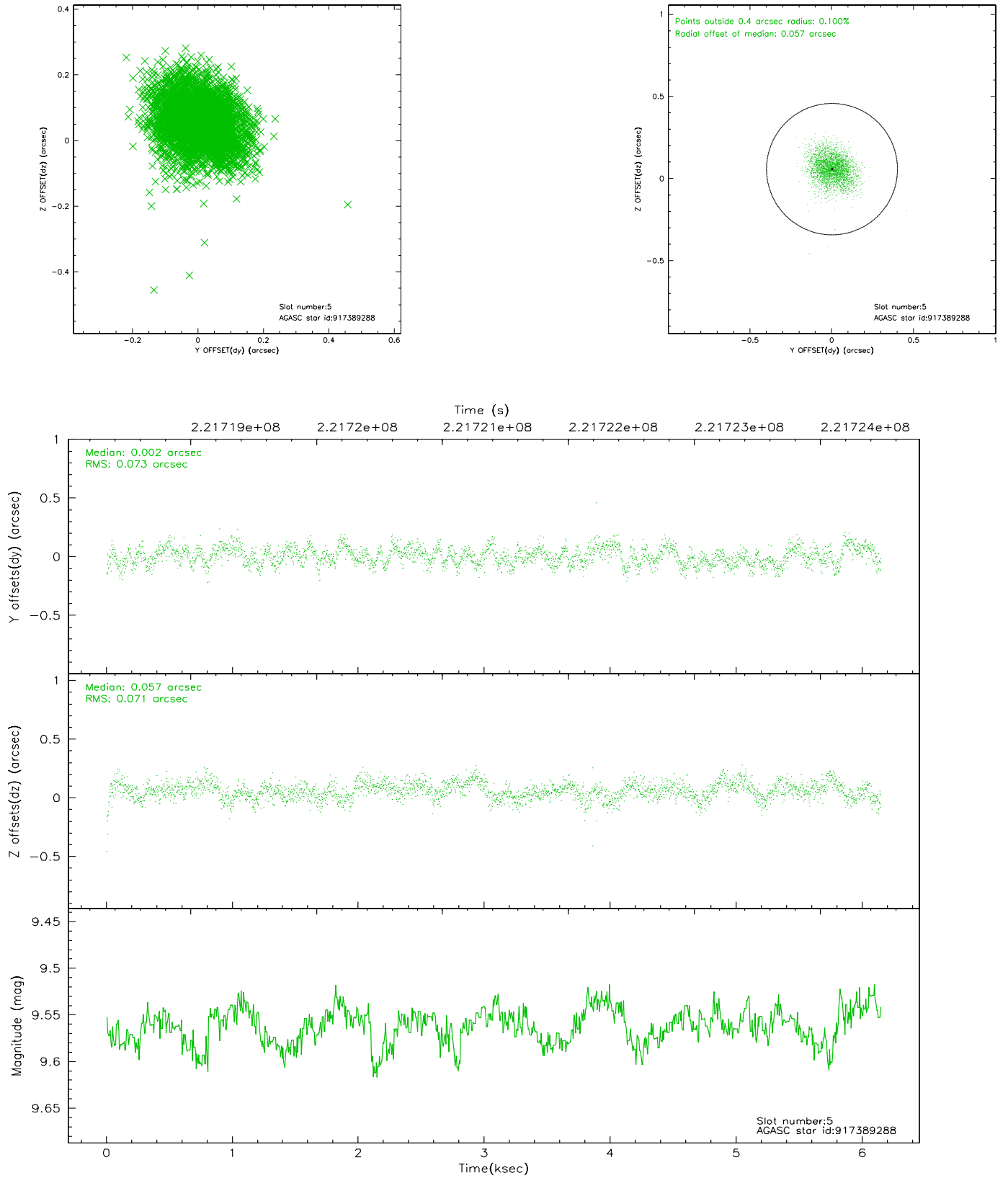
2.4.1 Slot 3



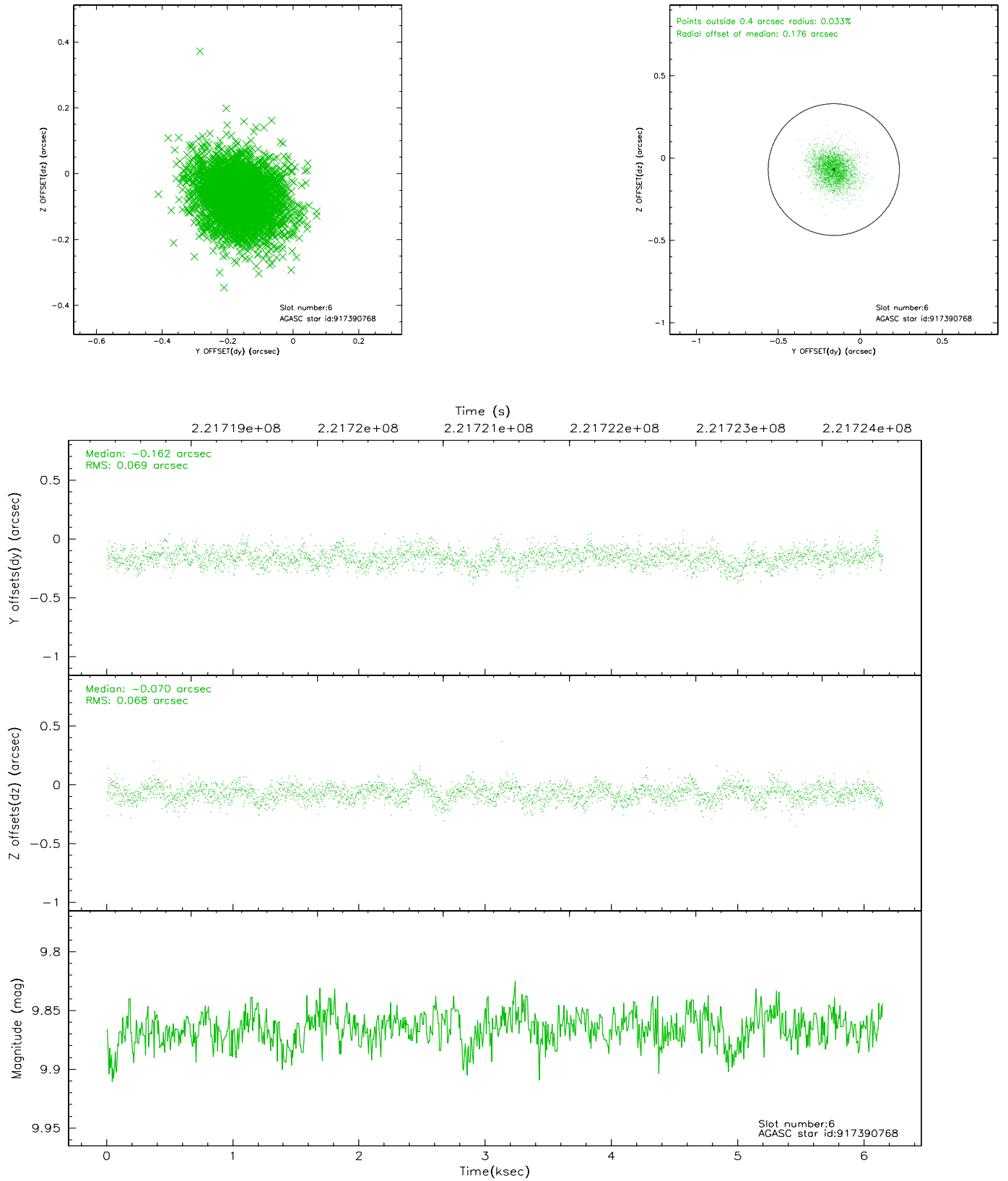
2.4.2 Slot 4



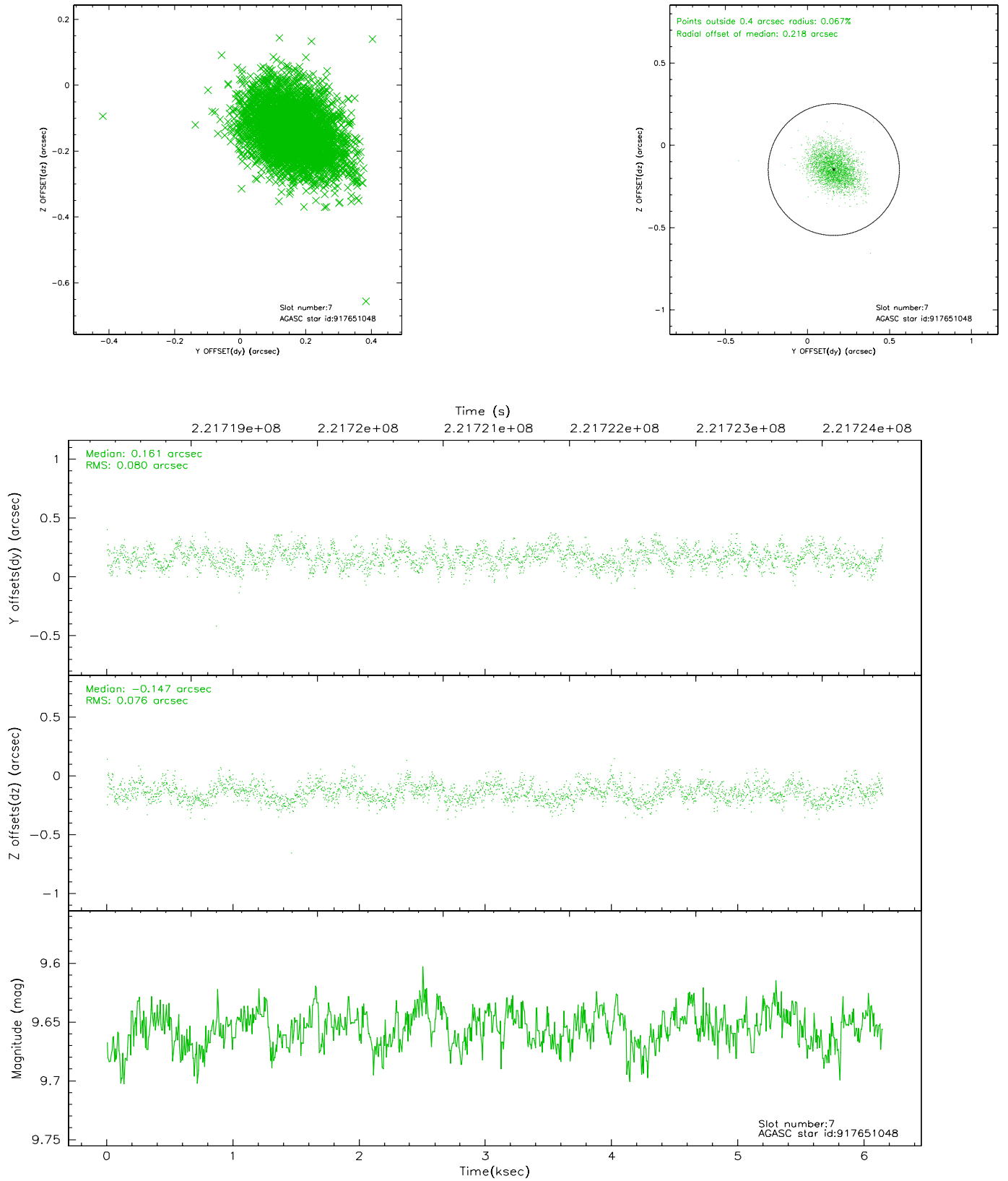
2.4.3 Slot 5



2.4.4 Slot 6

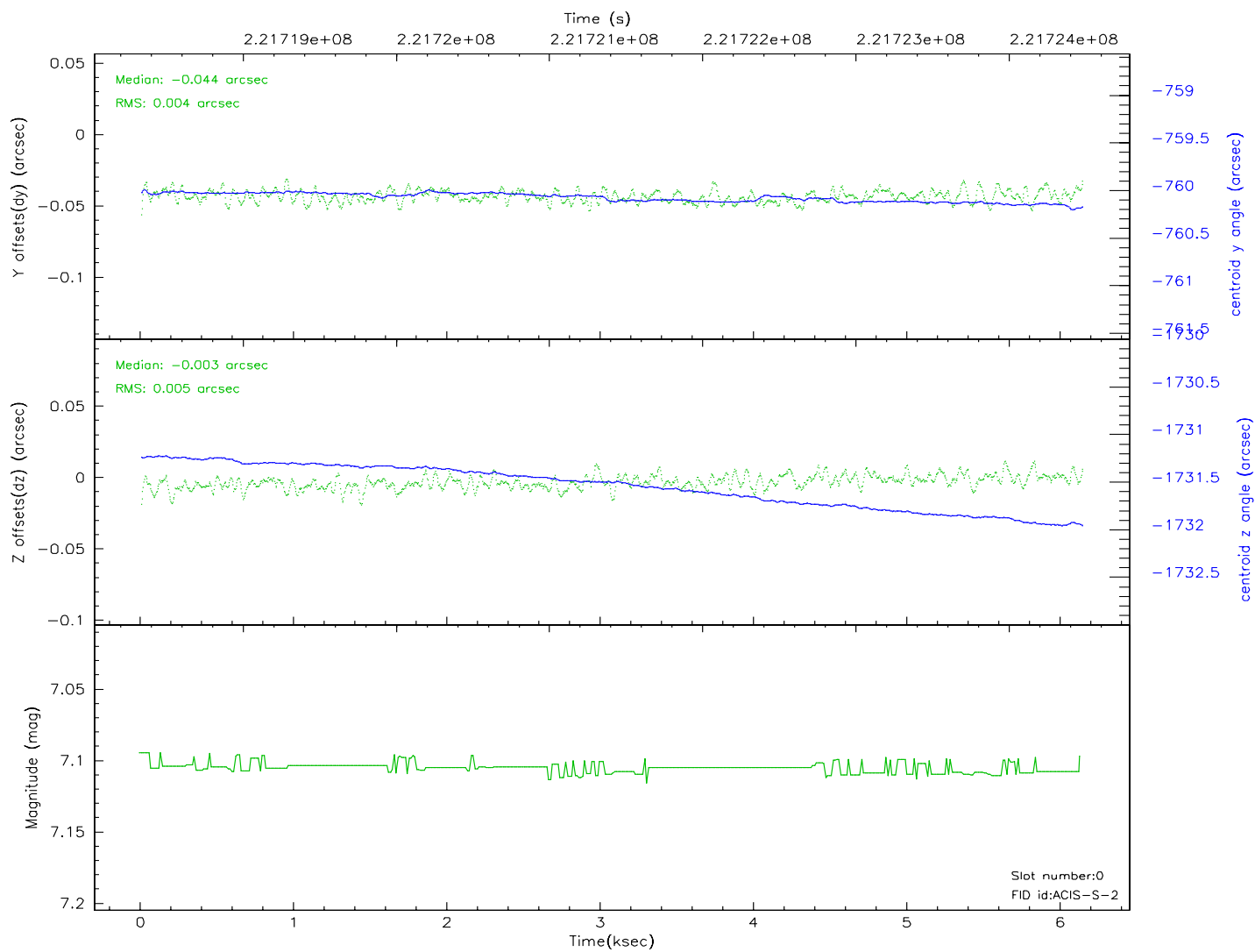
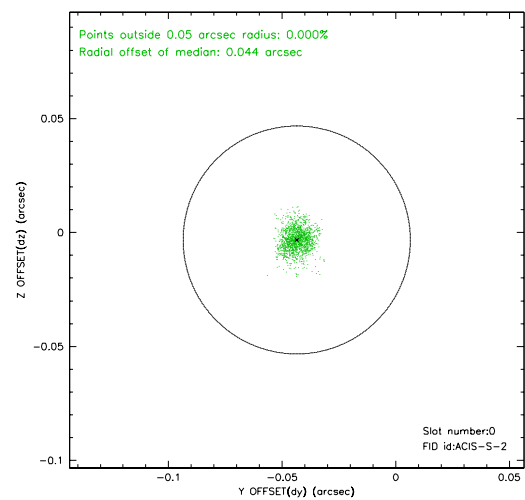
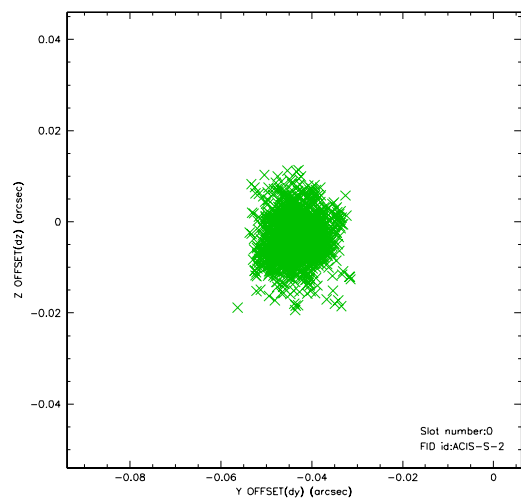


2.4.5 Slot 7

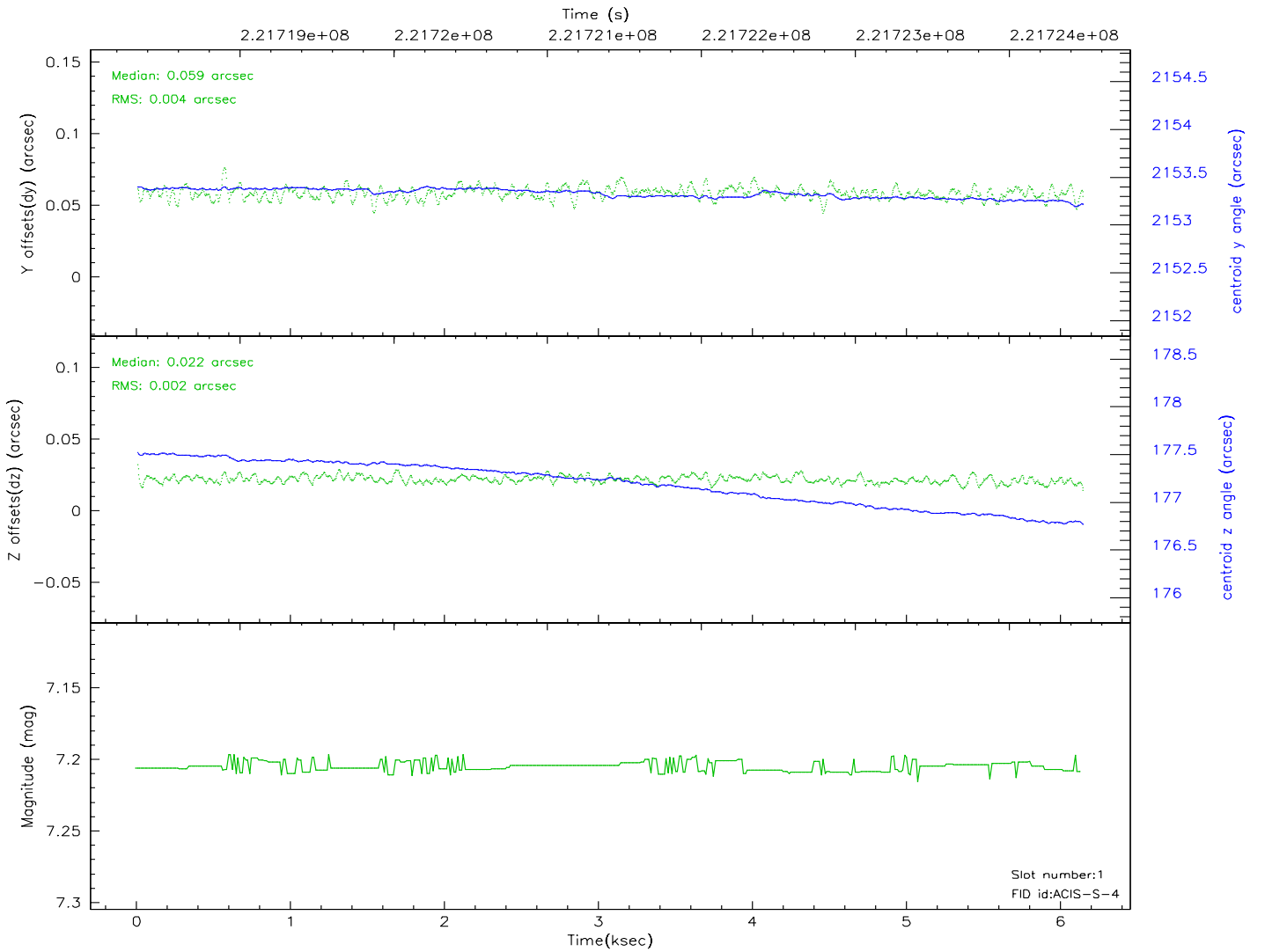
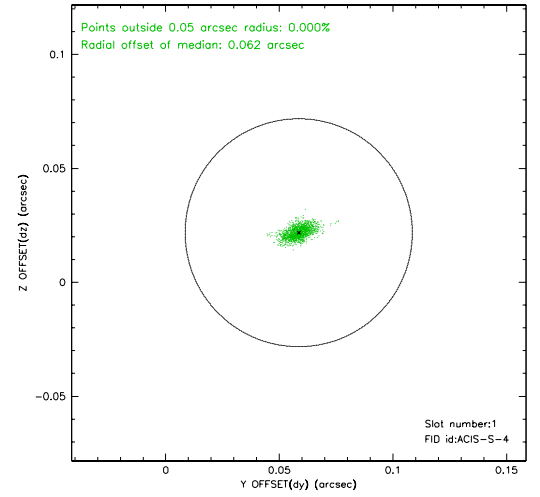
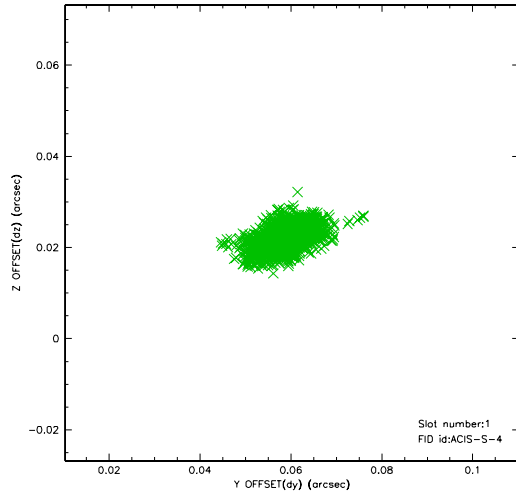


2.5 FID Slots

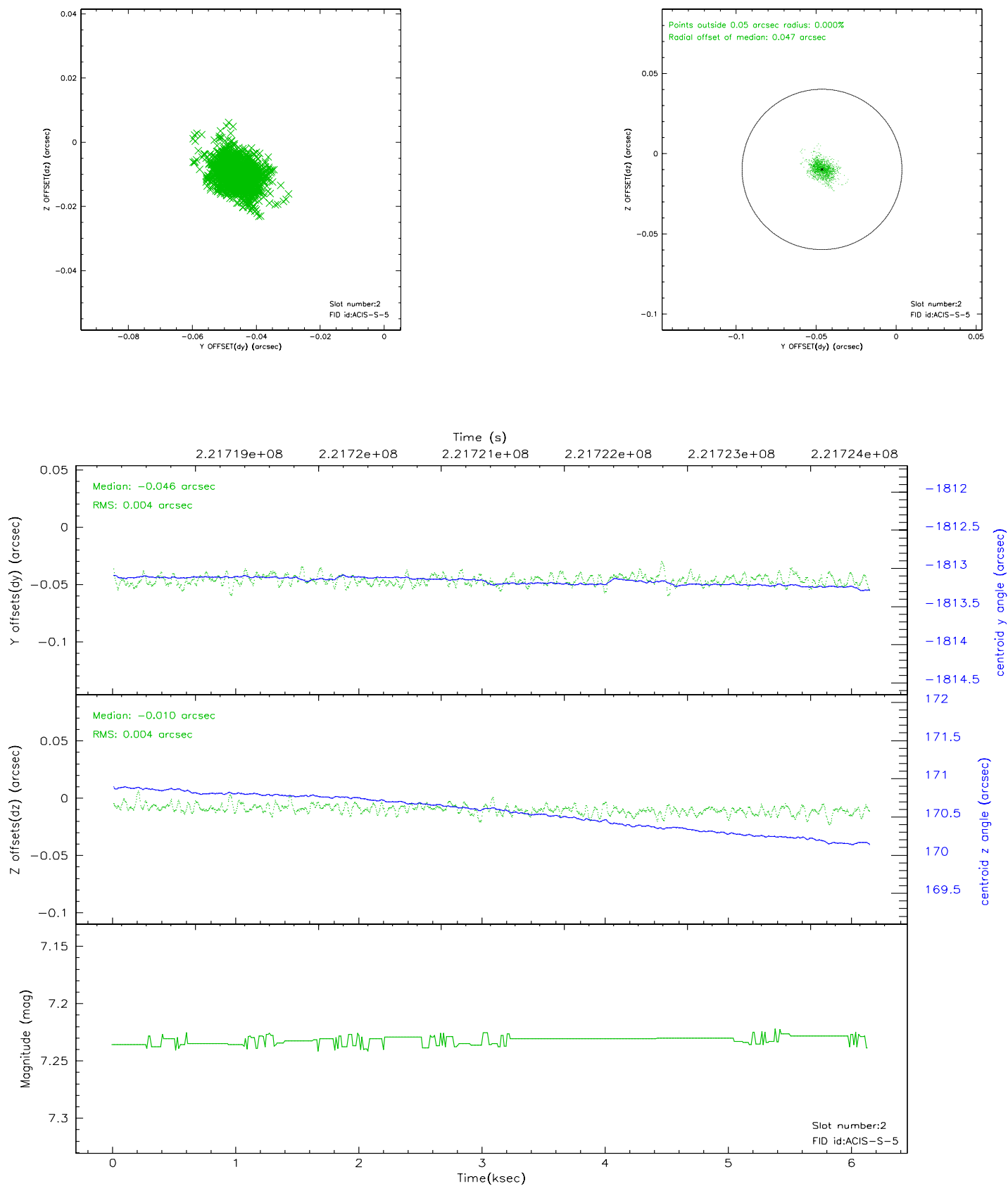
2.5.1 Slot 0



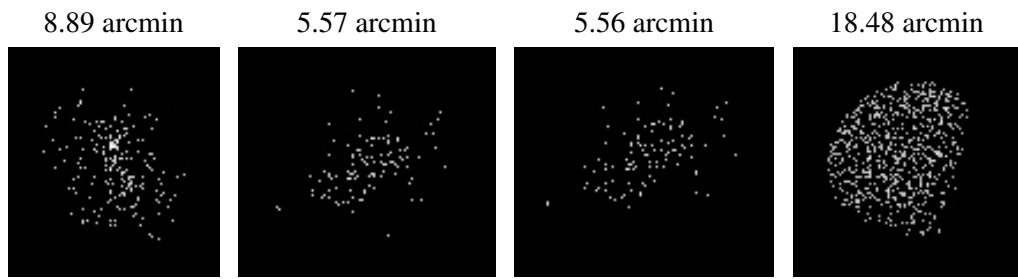
2.5.2 Slot 1



2.5.3 Slot 2



3 Point Sources



A Summary

A.1 Status

V&V Scientist	Beth Sundheim
V&V Date (YYYY-MM-DD)	2006.02.16
V&V Edition	1
V&V Disposition and Status	OK
V&V Charge Time	6.137599

A.2 Comments

Charge time:

Using existing charge time of 6.137599.