

V&V Reference Report

L2 ASCDS Version : 8.5.1

Observation 4717 - L2 Version 3
Chandra X-Ray Center

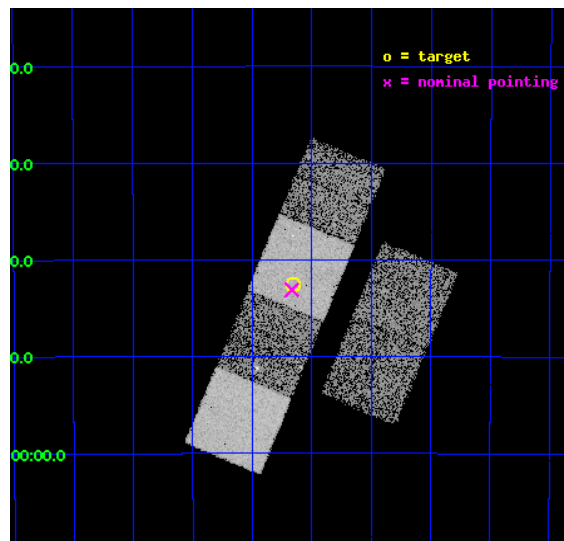
L2 Processing Date : Dec 15 2012

Contents

1	Front	2
2	OBI	3
2.1	OBI	3
2.1.1	Images	3
2.1.2	Bias	3
2.1.3	Parameters	4
2.1.4	Events	4
2.2	Compared Parameters	5
2.3	Aspect	6
2.4	Star Slots	9
2.4.1	Slot 3	9
2.4.2	Slot 4	10
2.4.3	Slot 5	11
2.4.4	Slot 6	12
2.4.5	Slot 7	13
2.5	FID Slots	14
2.5.1	Slot 0	14
2.5.2	Slot 1	15
2.5.3	Slot 2	16
A	Summary	17
A.1	Status	17
A.2	Comments	17

1 Front

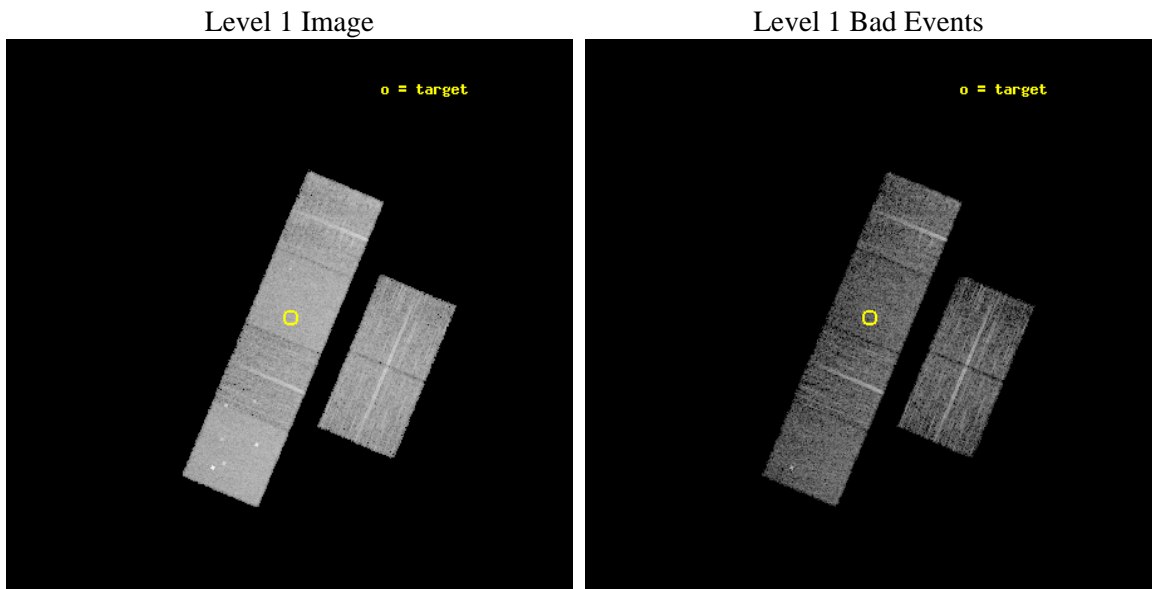
seq_num	600372	Sequence number
obs_id	4717	Observation id
title	Using the Sculptor Dwarf Spheroidal Galaxy to Constrain X-ray Binary Production in Population II	Proposal title
observer	Dr Thomas Maccarone	Principal investigator
object	SCULPTOR DWARF SPHEROIDAL	Source name
dtcycle	0	
cycle	P	events from which exps? Prim/Second/Both
ra_targ	15.039167	Observer's specified target RA [deg]
dec_targ	-33.708889	Observer's specified target Dec [deg]
ra_nom	15.041629738107	Nominal RA [deg]
dec_nom	-33.718307500602	Nominal Dec [deg]
roll_nom	292.62515333143	Nominal Roll [deg]
revision	3	Processing version of data
ontime	6150.399977088	Sum of GTIs [s]
livetime	6072.5199092518	Livetime [s]
ontime2	6150.399977088	Sum of GTIs [s]
ontime3	6150.399977088	Sum of GTIs [s]
ontime5	6150.399977088	Sum of GTIs [s]
ontime6	6150.399977088	Sum of GTIs [s]
ontime7	6150.399977088	Sum of GTIs [s]
ontime8	6143.9181062579	Sum of GTIs [s]
l2events	74843	Number of level 2 events



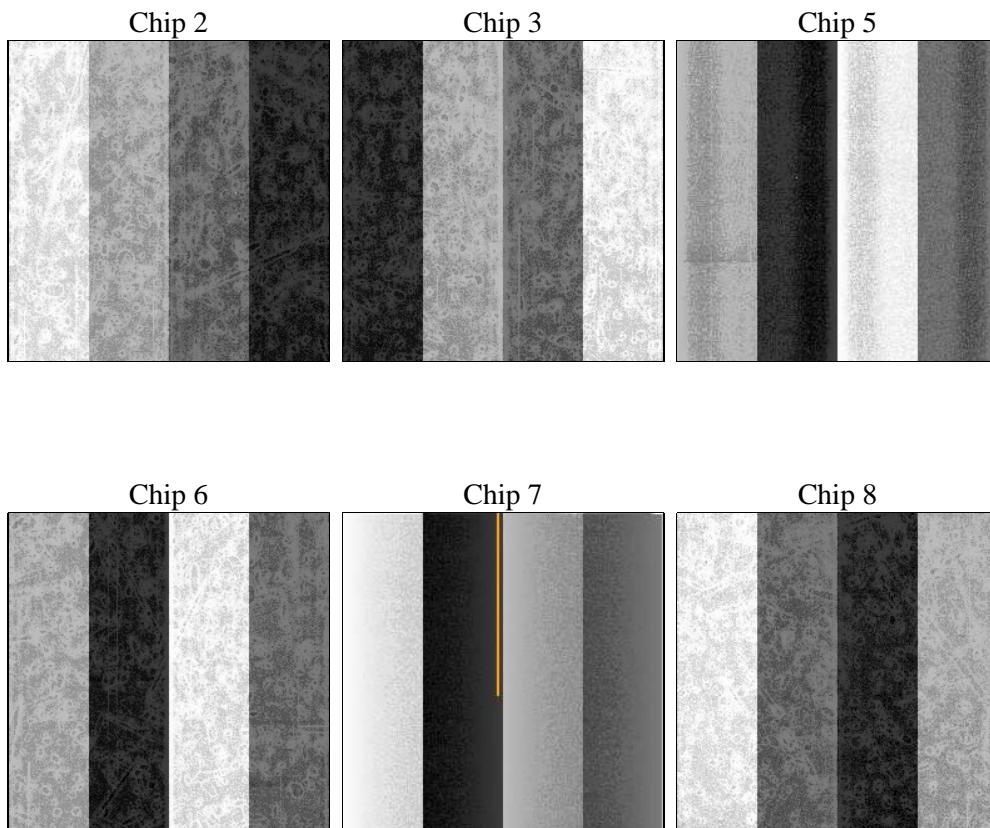
2 OBI

2.1 OBI

2.1.1 Images



2.1.2 Bias



2.1.3 Parameters

obi_num	0	Obi number	sched_exp_time	6000.000000	[s] Scheduled observation exposure time
ascdsver	8.5.1	Processing system revision	ontime	6150.399977088	Sum of GTIs [s]
caldbver	4.5.5	 	ontime2	6150.399977088	Sum of GTIs [s]
date	2012-12-15T06:41:38	Date and time of file creation	ontime3	6150.399977088	Sum of GTIs [s]
revision	3	Processing version of data	ontime5	6150.399977088	Sum of GTIs [s]
			ontime6	6150.399977088	Sum of GTIs [s]
			ontime7	6150.399977088	Sum of GTIs [s]
			ontime8	6143.9181062579	Sum of GTIs [s]
			l1events	338443	Number of level 1 events

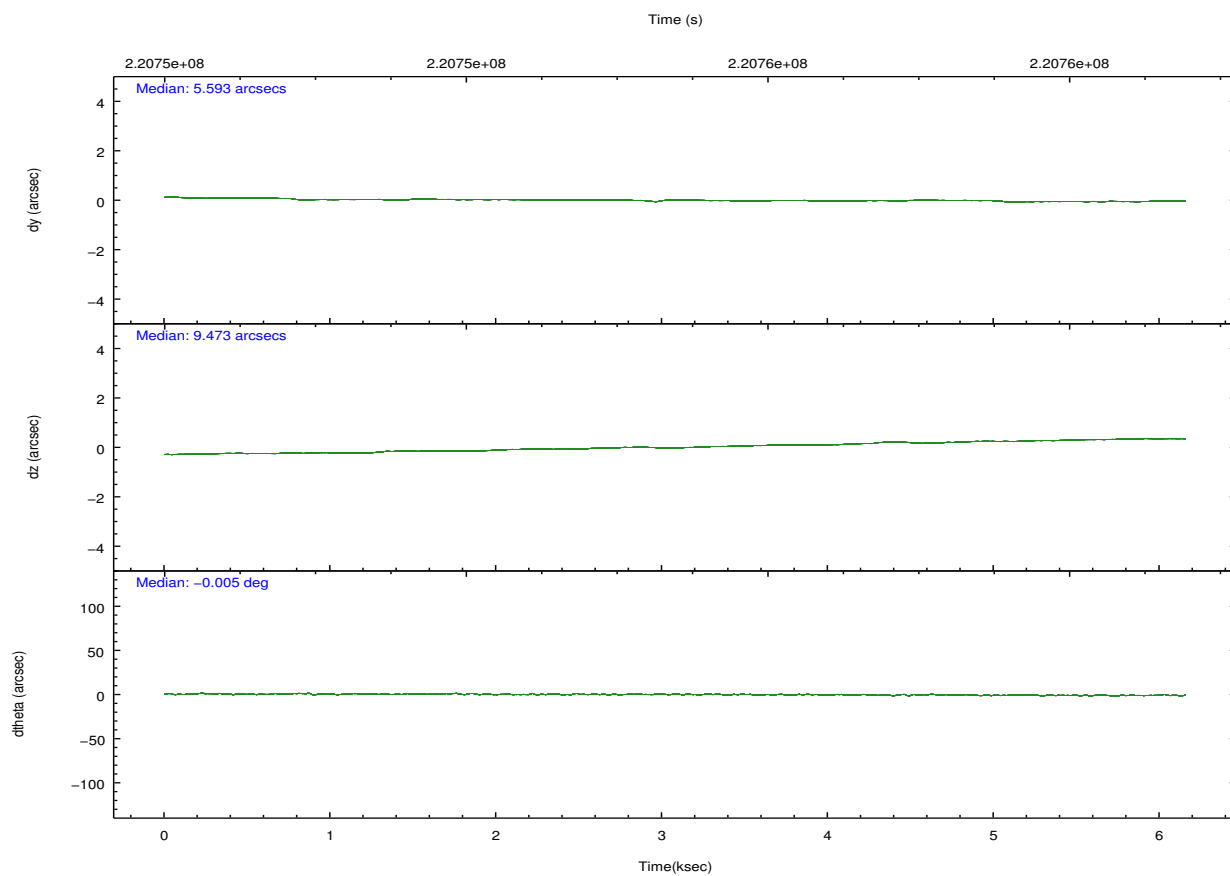
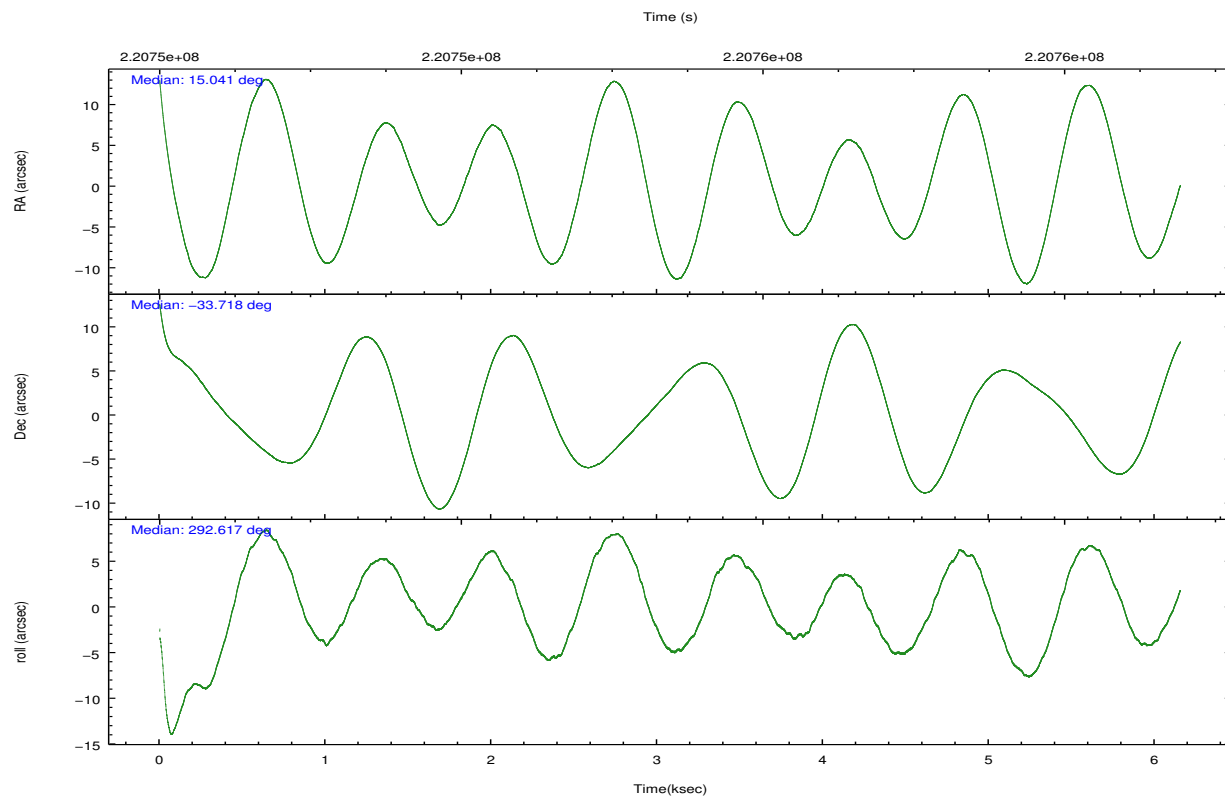
2.1.4 Events

	ccd 2	ccd 3	ccd 5	ccd 6	ccd 7	ccd 8		ccd 2	ccd 3	ccd 5	ccd 6	ccd 7	ccd 8
level 1 events	48991	46499	72443	47454	64918	58138	grade 0 events	2472	2418	4454	2526	2544	4174
rejected events	43592	41130	39681	41694	38536	45776		5%	5%	6%	5%	3%	7%
rejected %	88%	88%	54%	87%	59%	78%	grade 1 events	22	29	380	21	57	33
								0%	0%	0%	0%	0%	0%
							grade 2 events	1130	1110	9729	1214	5472	2704
								2%	2%	13%	2%	8%	4%
							grade 3 events	515	526	1339	590	2349	1395
								1%	1%	1%	1%	3%	2%
							grade 4 events	535	506	1232	513	2362	1309
								1%	1%	1%	1%	3%	2%
							grade 5 events	1869	2109	5152	2201	6108	2771
								3%	4%	7%	4%	9%	4%
							grade 6 events	901	994	17070	1090	14515	3232
								1%	2%	23%	2%	22%	5%
							grade 7 events	41547	38807	33087	39299	31511	42520
								84%	83%	45%	82%	48%	73%

2.2 Compared Parameters

Parameter	Planned	Actual	Parameter	Planned	Actual
Instrument	ACIS	ACIS	Obspar format version number	7	7
Detector	ACIS-235678	ACIS-235678	Obspar file type	PREDICTED	ACTUAL
Grating	NONE	NONE	Obspar update status	NONE	UPDATED
Data mode	VFAINT	VFAINT	Number of optional ACIS chips dropped	0	0
Observation mode	POINTING	POINTING	On-chip summing requested	N	N
[deg] Pointing RA	15.015413	15.04162973810694	Subarray requested	NONE	NONE
[deg] Pointing Dec	-33.702092	-33.71830750060212	Alternating exposures requested	N	N
[deg] Pointing Roll	292.453971	292.6251533314304	[s] Primary exposure time	0.000000	3.2
[mm] SIM focus pos	-0.684267	-0.6828225247311905			
[mm] SIM defocus	0	0.001444936568705701			
[mm] SIM translation stage pos	-190.132523	-190.1400660498719			
[mm] SIM translation stage offset	0	0.00754346686406393			
[s] Observation start time (MET)	220752463.184000	220751308.07918			
Observation start date	2004-12-30T00:06:39	2004-12-29T23:48:28			
[s] Observation end time (MET)	220758463.184000	220759850.94207			
Observation end date	2004-12-30T01:46:39	2004-12-30T02:10:50			
Read mode	TIMED	TIMED			

2.3 Aspect

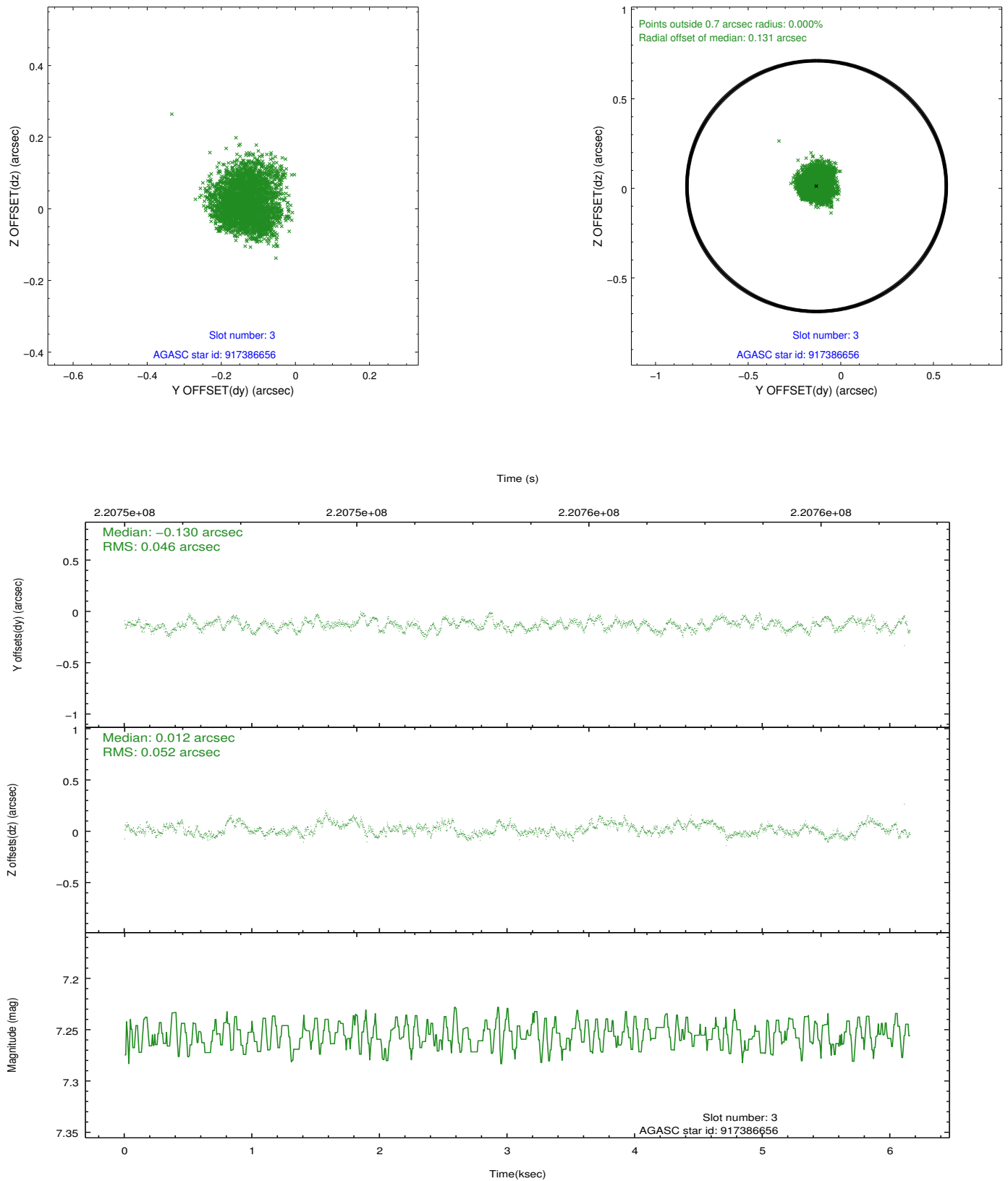


Slot Statistics

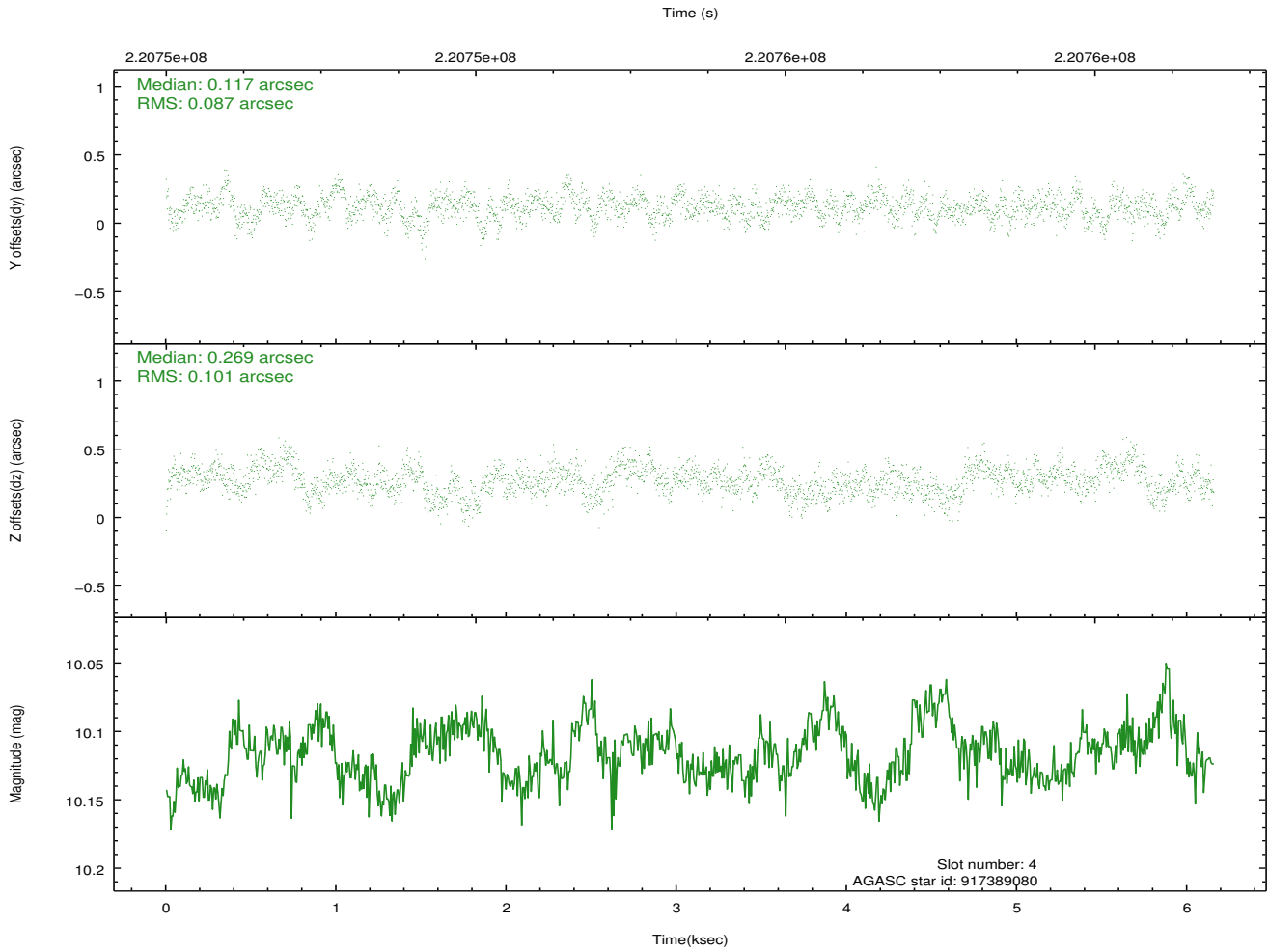
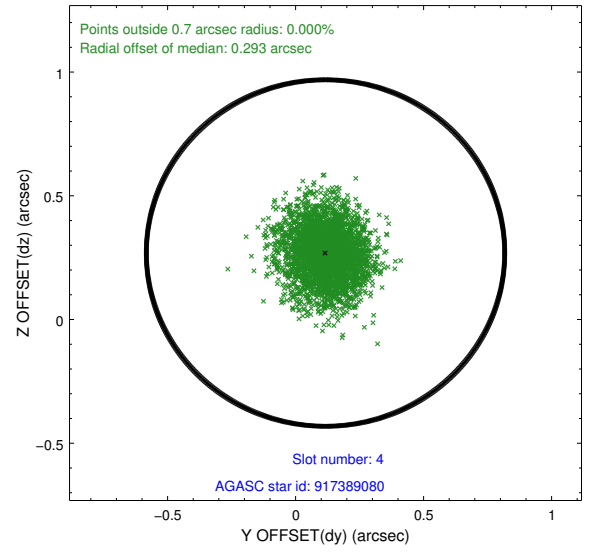
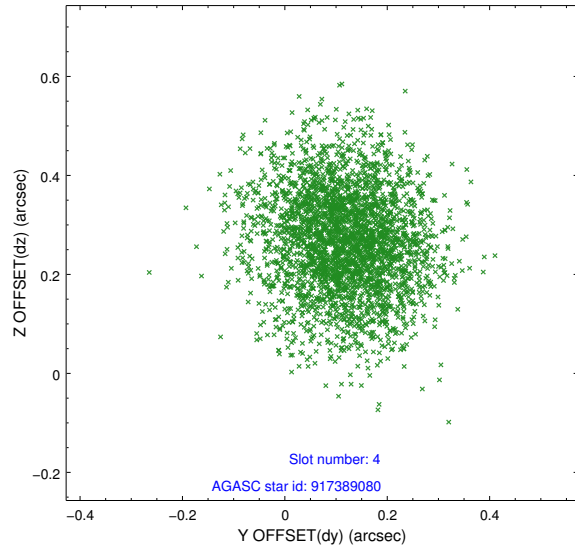
slot	status	id	mag	n_pts	med_dy	med_dz	dr1	dr2	ra	dec	mean_y	mean_z
0	FID	ACIS-S-2	7.10	1502	-0.071	-0.045	0.009	0.013	0.000000	0.000000	-758.36	-1730.78
1	FID	ACIS-S-4	7.20	1502	0.122	0.046	0.006	0.011	0.000000	0.000000	2154.65	176.83
2	FID	ACIS-S-5	7.23	1502	-0.083	0.007	0.008	0.013	0.000000	0.000000	-1810.00	171.52
3	GUIDE	917386656	7.26	3004	-0.130	0.012	0.075	0.115	15.342124	-33.359890	-761.73	1378.12
4	GUIDE	917389080	10.12	3001	0.117	0.269	0.143	0.229	15.722484	-33.662555	684.48	2010.73
5	GUIDE	917389288	9.57	3003	-0.071	0.036	0.094	0.153	15.394706	-33.185862	-1278.63	1765.92
6	GUIDE	917650528	8.72	3003	-0.104	-0.132	0.085	0.141	14.274554	-33.869842	-279.99	-2279.57
7	GUIDE	917651048	9.65	3002	0.189	-0.185	0.099	0.161	14.655628	-34.424089	1996.79	-1981.28

2.4 Star Slots

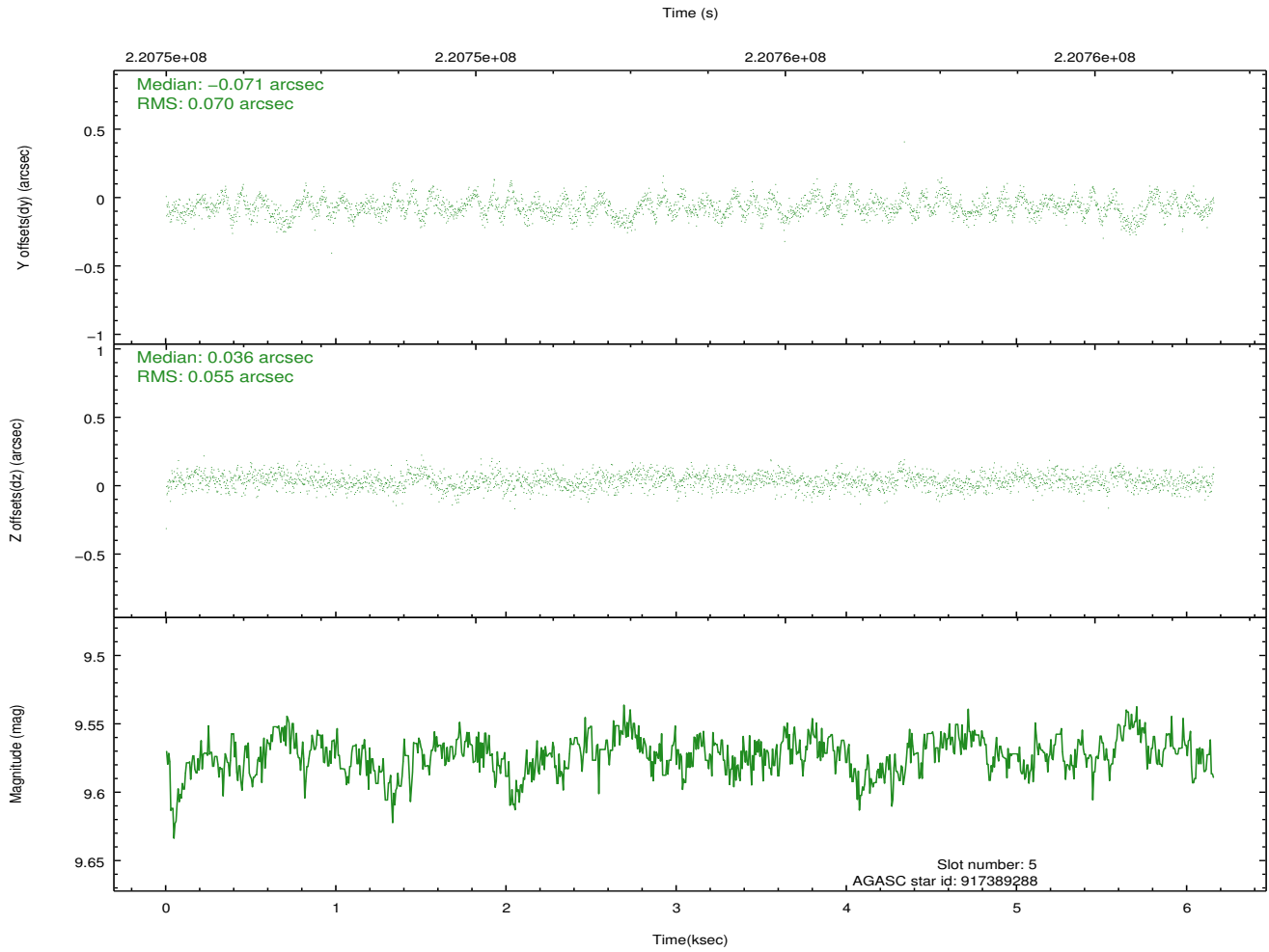
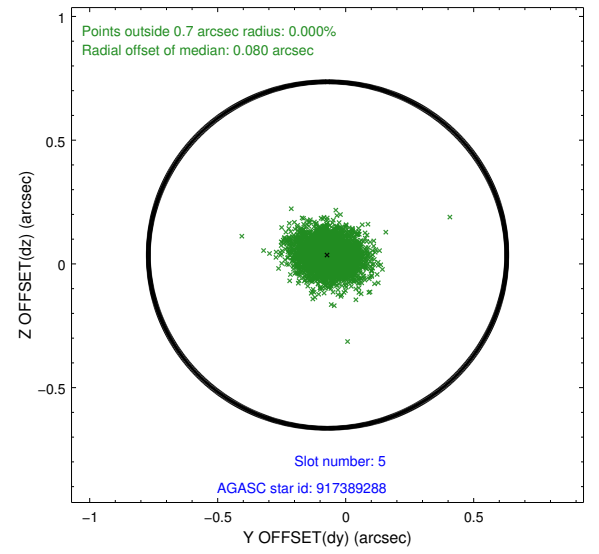
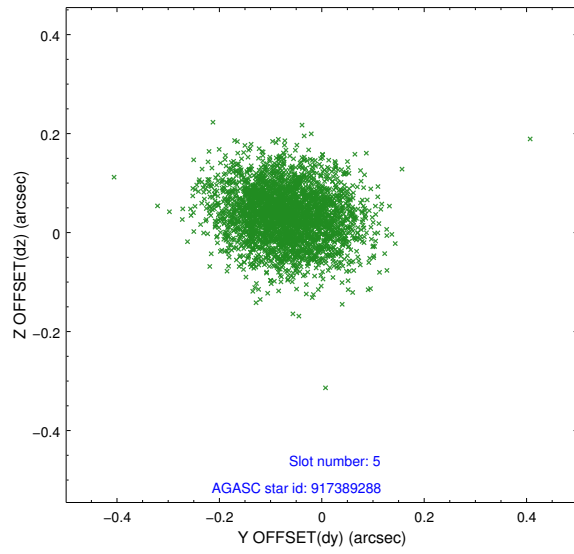
2.4.1 Slot 3



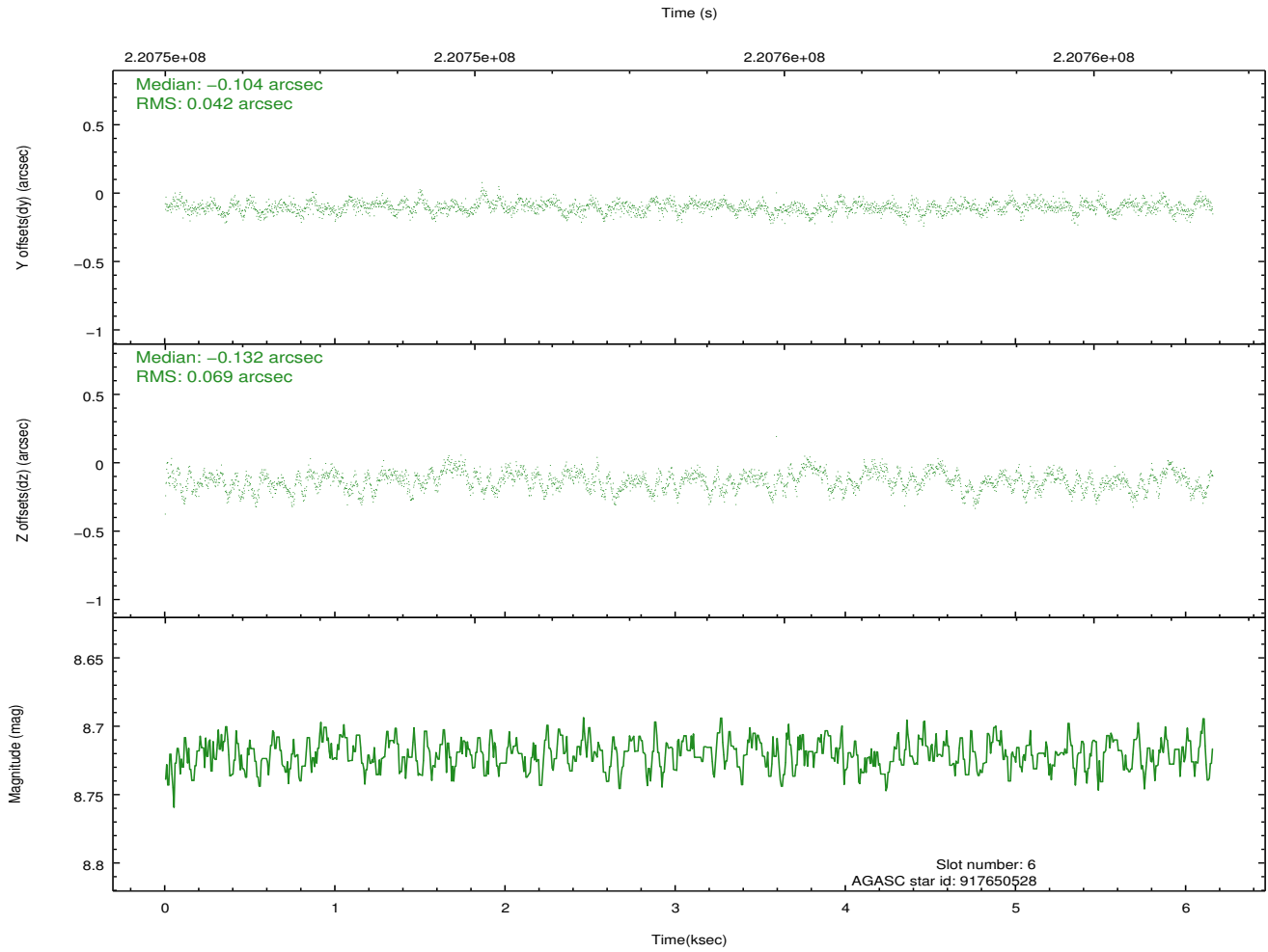
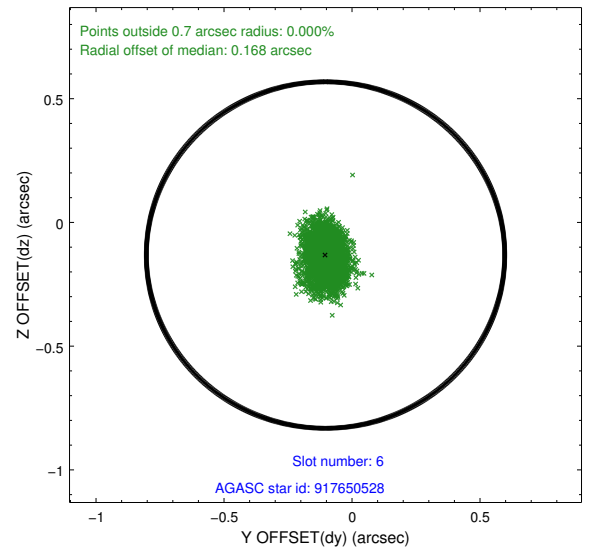
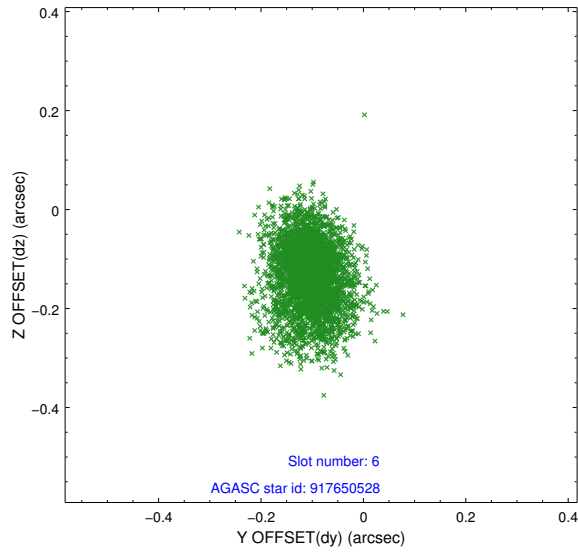
2.4.2 Slot 4



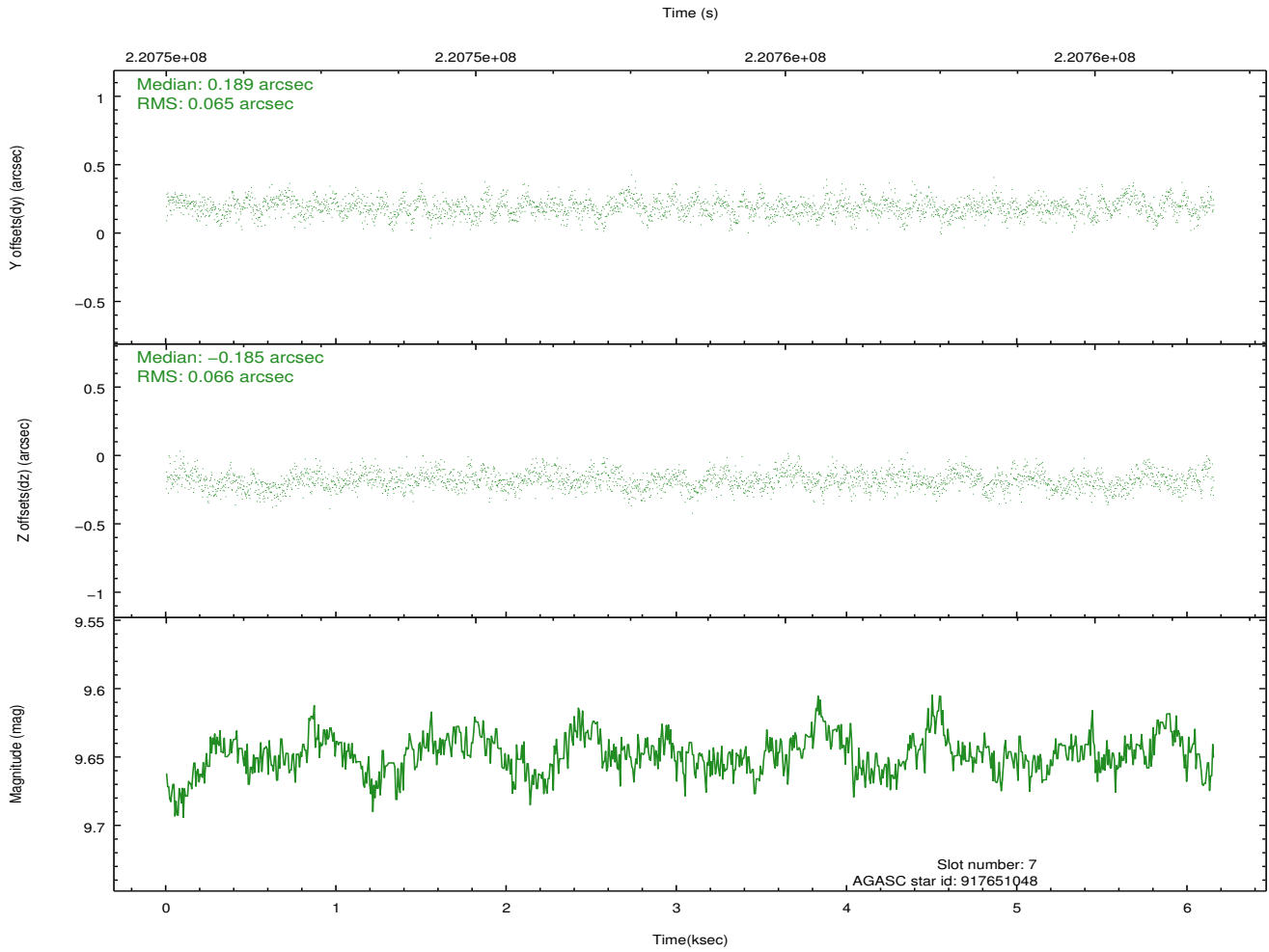
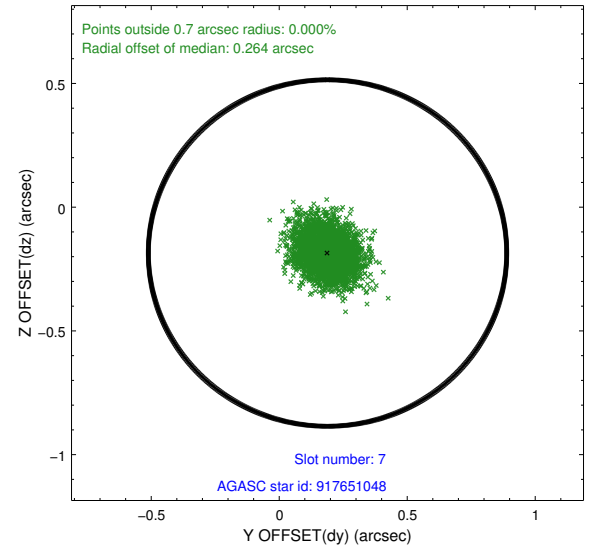
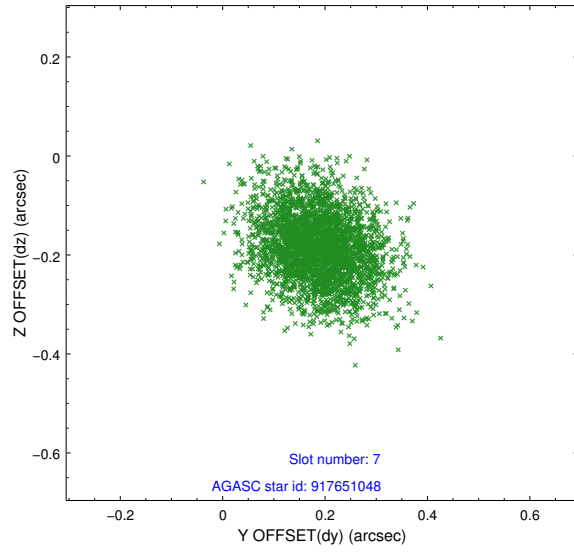
2.4.3 Slot 5



2.4.4 Slot 6

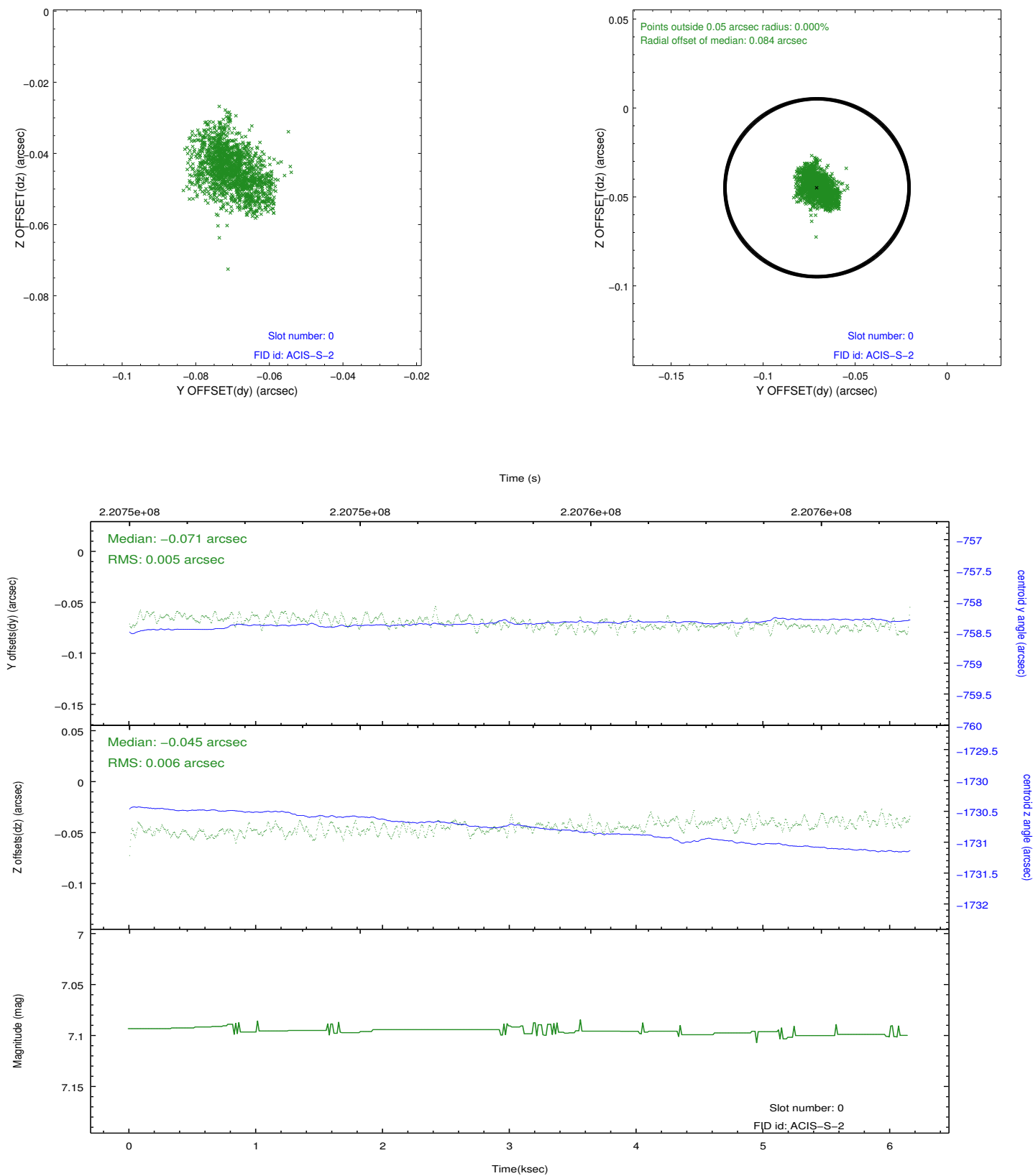


2.4.5 Slot 7

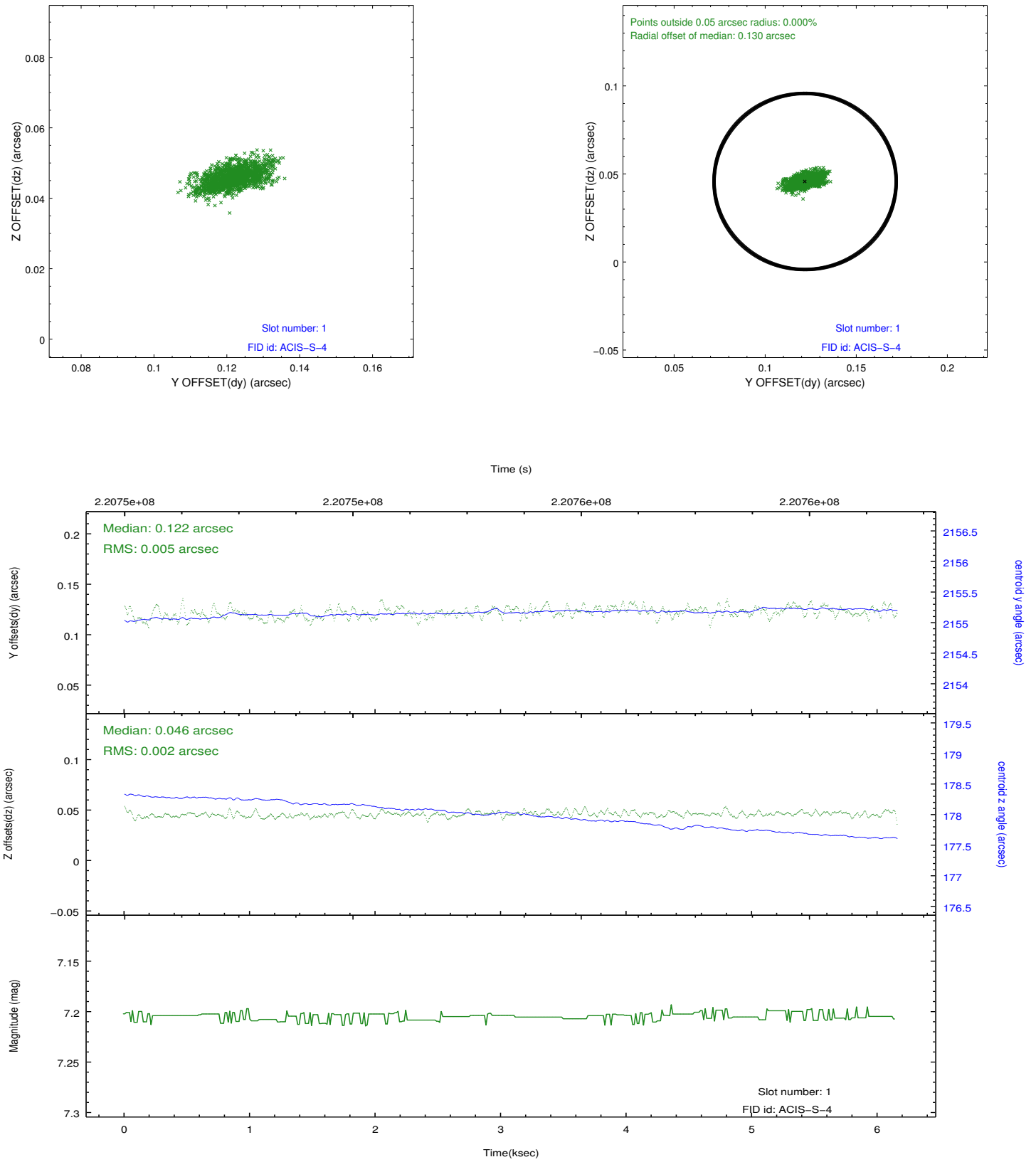


2.5 FID Slots

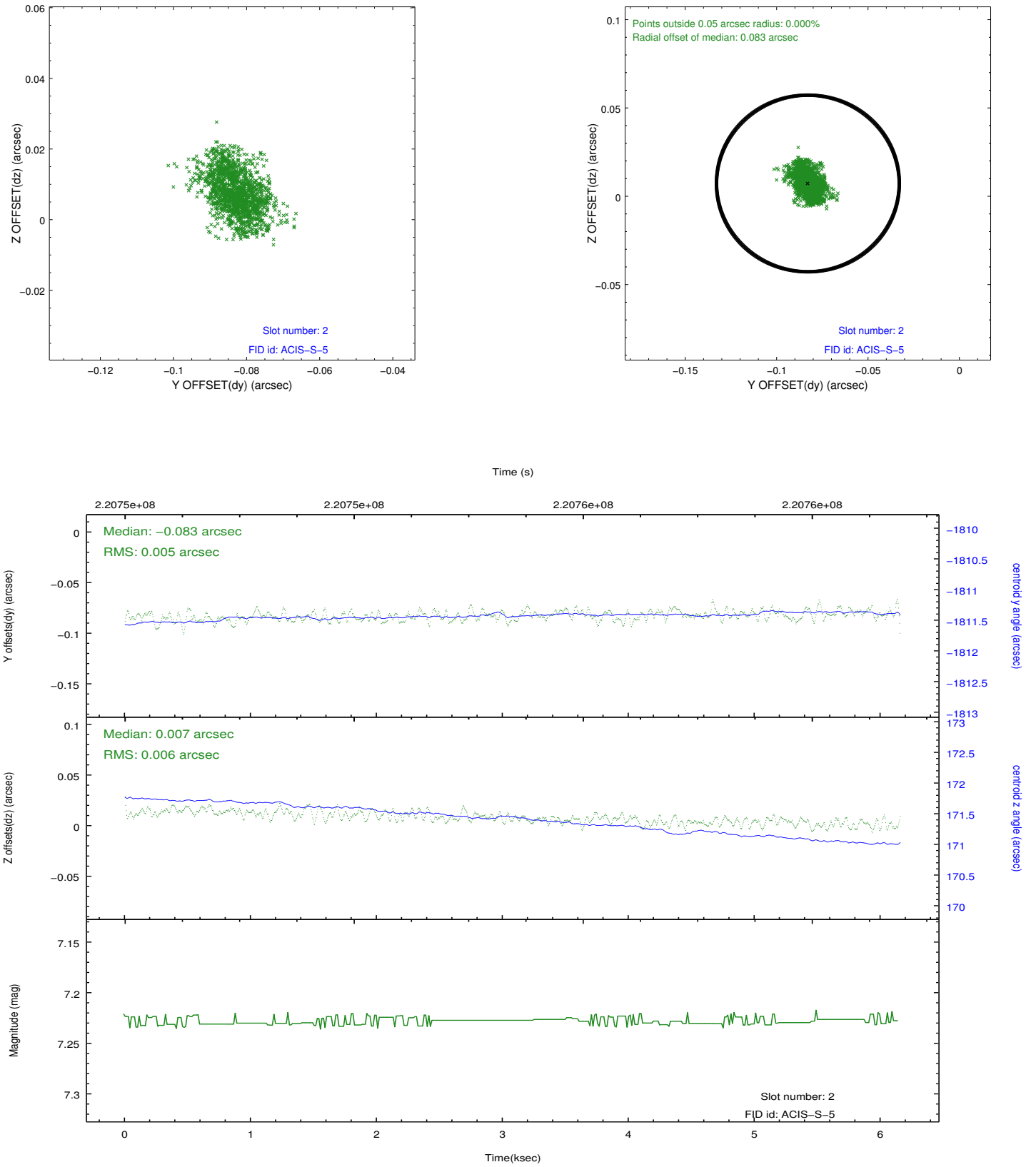
2.5.1 Slot 0



2.5.2 Slot 1



2.5.3 Slot 2



A Summary

A.1 Status

V&V Scientist	Jen Lauer
V&V Date (YYYY-MM-DD)	2013.01.08
V&V Edition	1
V&V Disposition and Status	OK
V&V Charge Time	6.150399

A.2 Comments

Joint Proposal: NOAO