

V&V Reference Report

L2 ASCDS Version : 7.6.7.1

Observation 4715 - L2 Version 002
Chandra X-Ray Center

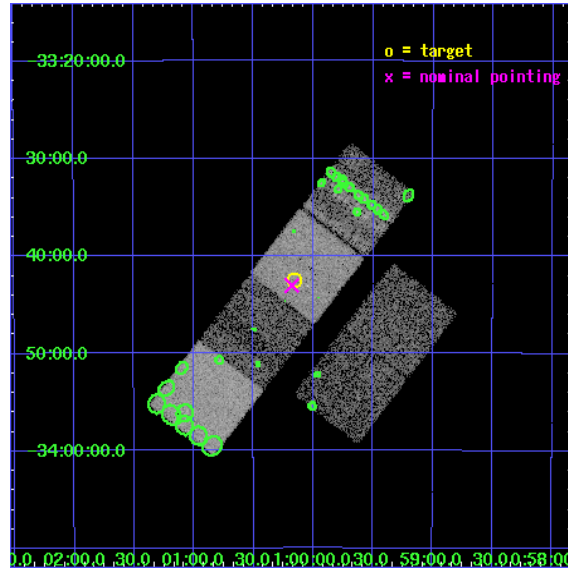
L2 Processing Date : Apr 8 2006

Contents

1	Front	2
2	OBI	3
2.1	OBI	3
2.1.1	Images	3
2.1.2	Bias	3
2.1.3	Parameters	4
2.1.4	Events	4
2.2	Compared Parameters	5
2.3	Aspect	6
2.4	Star Slots	9
2.4.1	Slot 3	9
2.4.2	Slot 4	10
2.4.3	Slot 5	11
2.4.4	Slot 6	12
2.4.5	Slot 7	13
2.5	FID Slots	14
2.5.1	Slot 0	14
2.5.2	Slot 1	15
2.5.3	Slot 2	16
3	Point Sources	17
A	Summary	18
A.1	Status	18
A.2	Comments	18

1 Front

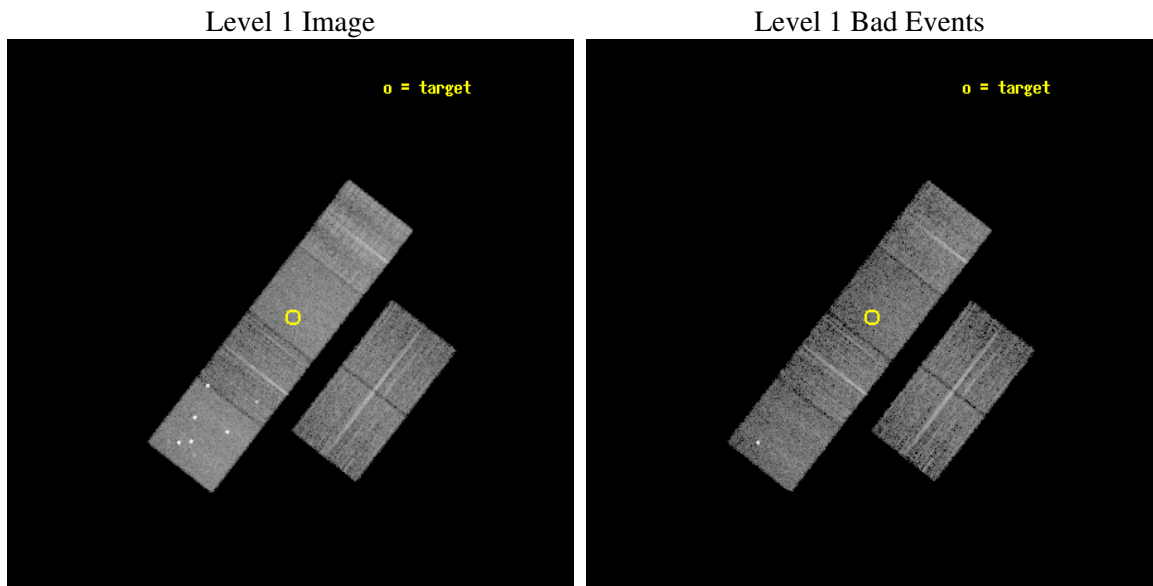
seq_num	600370
obs_id	4715
title	Using the Sculptor Dwarf Spheroidal Galaxy to Constrain X-ray Binary Production in Population II
observer	Dr. Thomas Maccarone
object	SCULPTOR DWARF SPHEROIDAL
dtcycle	0
cycle	P
ra_targ	15.039167
dec_targ	-33.708889
ra_nom	15.044666370387
dec_nom	-33.717395549156
roll_nom	307.78106921879
revision	2
ontime	5753.5999785662
livetime	5680.7444312356
ontime2	5753.5999785662
ontime3	5753.5999785662
ontime5	5753.5999785662
ontime6	5753.5999785662
ontime7	5753.5999785662
ontime8	5750.3589882851
l2events	81533



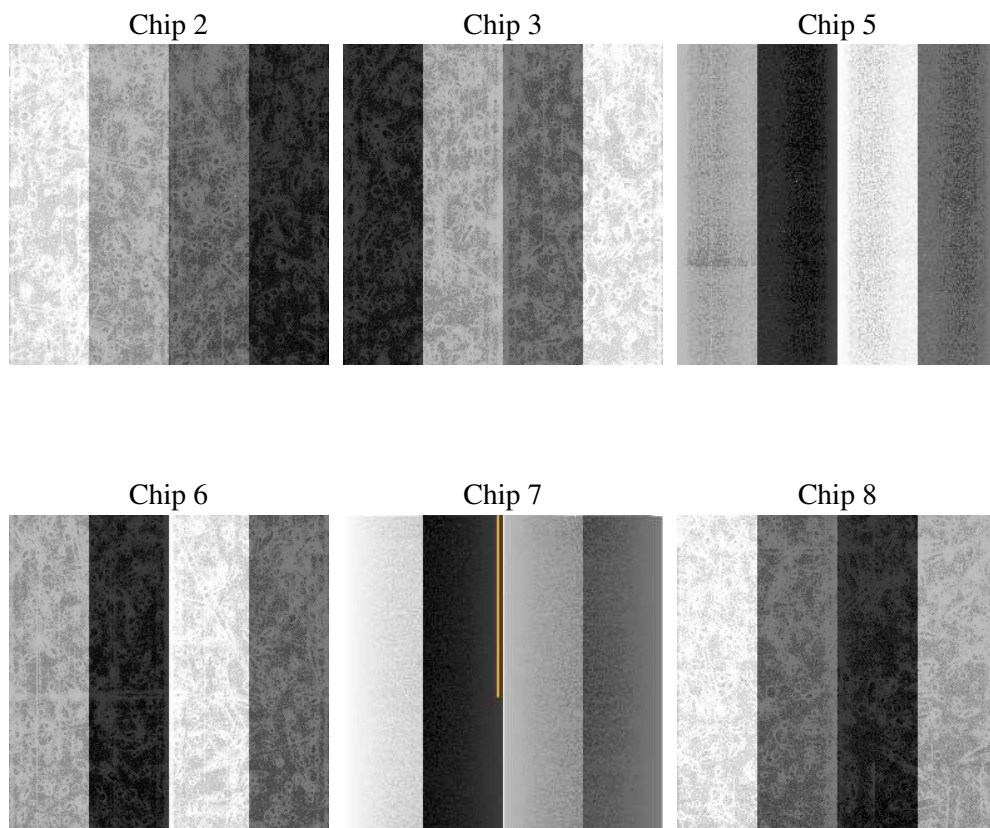
2 OBI

2.1 OBI

2.1.1 Images



2.1.2 Bias



2.1.3 Parameters

obi_num	1
ascdsver	7.6.7.1
caldbver	3.2.1
date	2006-04-08T12:55:28
revision	2

sched_exp_time	6000.000000
ontime	5759.2759691179
ontime2	5759.2759492397
ontime3	5759.2759492397
ontime5	5759.2759691179
ontime6	5759.2759492397
ontime7	5759.2759691179
ontime8	5756.0349589586
l1events	369146

2.1.4 Events

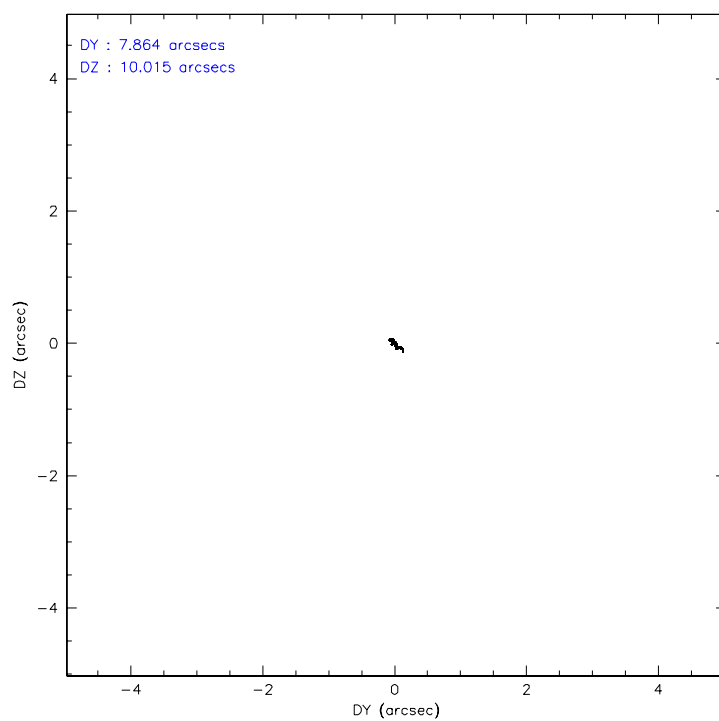
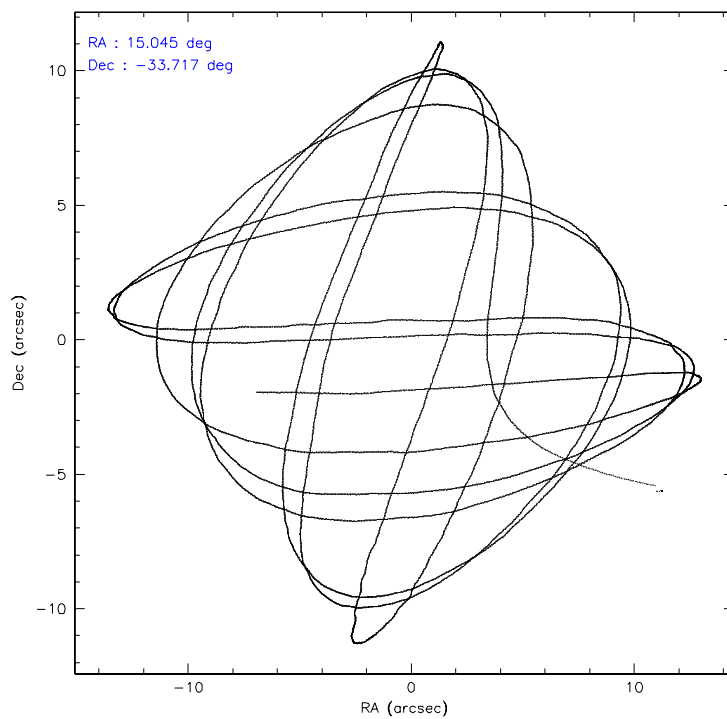
	ccd 2	ccd 3	ccd 5	ccd 6	ccd 7	ccd 8
level 1 events	51518	48735	78901	51468	63164	75360
rejected events	44846	42265	40788	44163	38733	51633
rejected %	87%	86%	51%	85%	61%	68%

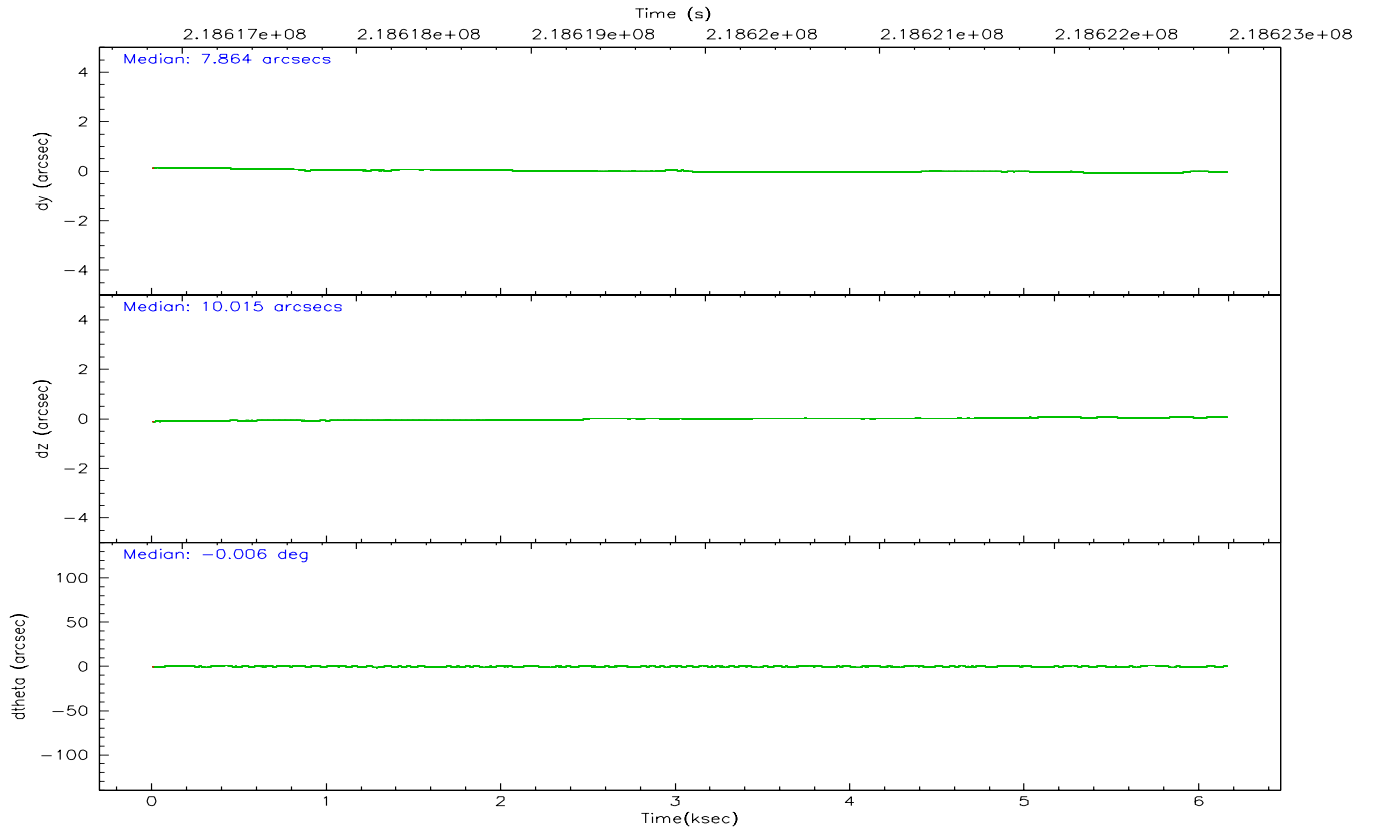
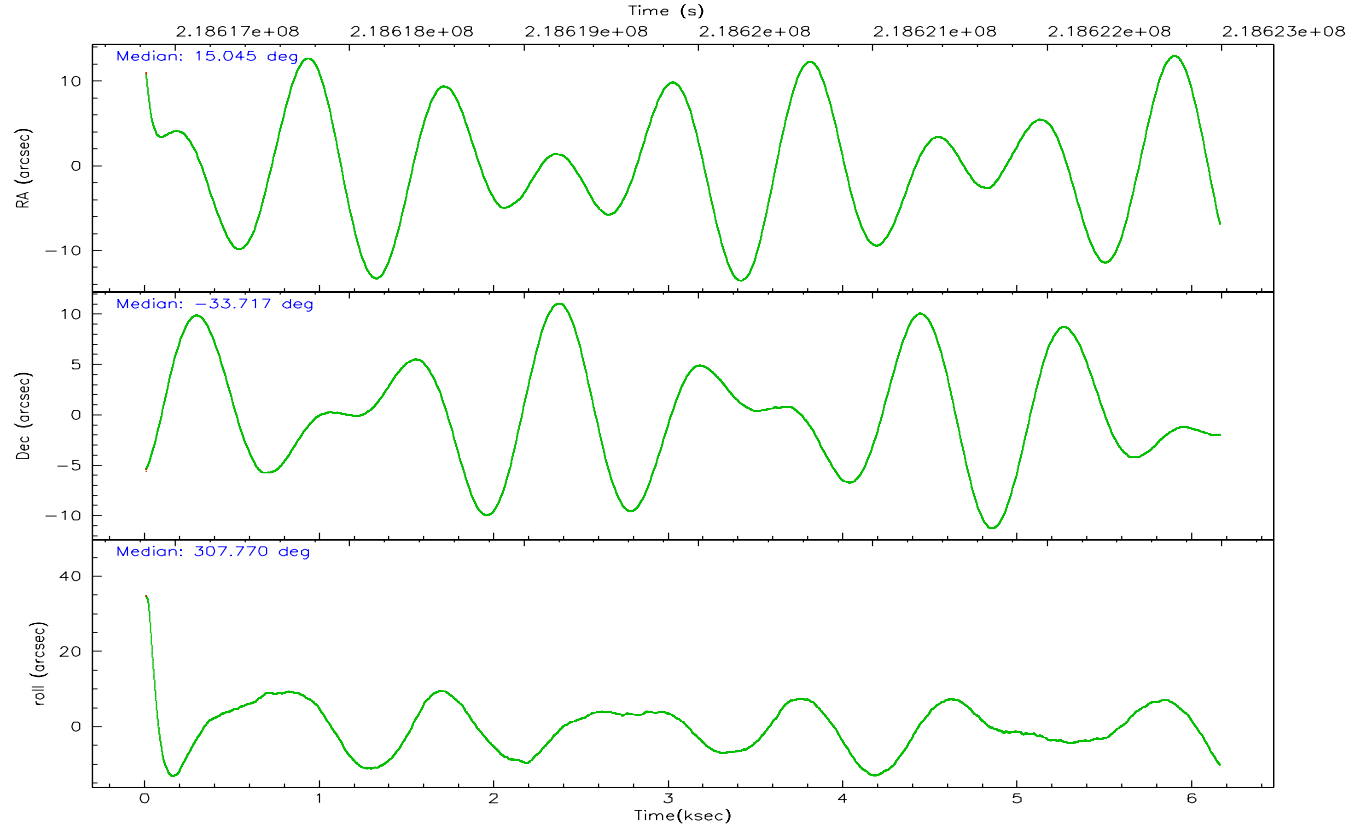
	ccd 2	ccd 3	ccd 5	ccd 6	ccd 7	ccd 8
grade 0 events	2954	2636	6435	3014	1449	8023
	5%	5%	8%	5%	2%	10%
grade 1 events	41	29	74	25	41	92
	0%	0%	0%	0%	0%	0%
grade 2 events	1489	1590	10337	1786	6098	4083
	2%	3%	13%	3%	9%	5%
grade 3 events	518	525	903	542	1195	3465
	1%	1%	1%	1%	1%	4%
grade 4 events	598	472	847	575	1085	3058
	1%	0%	1%	1%	1%	4%
grade 5 events	1793	1923	3238	2053	3932	2837
	3%	3%	4%	3%	6%	3%
grade 6 events	1116	1252	19611	1392	14619	5106
	2%	2%	24%	2%	23%	6%
grade 7 events	43009	40308	37456	42081	34745	48696
	83%	82%	47%	81%	55%	64%

2.2 Compared Parameters

Parameter	Planned	Actual	Parameter	Planned	Actual
Instrument	ACIS	ACIS	Obspar format version number	6	6
Detector	ACIS-235678	ACIS-235678	Obspar file type	PREDICTED	ACTUAL
Grating	NONE	NONE	Obspar update status	NONE	UPDATED
Data mode	VFAINT	VFAINT	On-chip summing requested	N	N
Observation mode	POINTING	POINTING	Subarray requested	NONE	NONE
Pointing RA	15.014102	15.04466637038668	Alternating exposures requested	N	N
Pointing Dec	-33.707495	-33.71739554915636	Primary exposure time	0.000000	3.2
Pointing Roll	307.607363	307.7810692187903			
SIM focus pos (mm)	-0.684267	-0.6828225247311905			
SIM defocus (mm)	0	0.001444936568705701			
SIM translation stage pos (mm)	-190.132523	-190.1425803651734			
SIM translation stage offset (mm)	0	0.01005778216563158			
Observation start time	218616997.184000	218616070.00806			
Observation start date	2004-12-05T06:55:33	2004-12-05T06:41:10			
Observation end time	218622997.184000	218623894.34591			
Observation end date	2004-12-05T08:35:33	2004-12-05T08:51:34			
Read mode	TIMED	TIMED			

2.3 Aspect



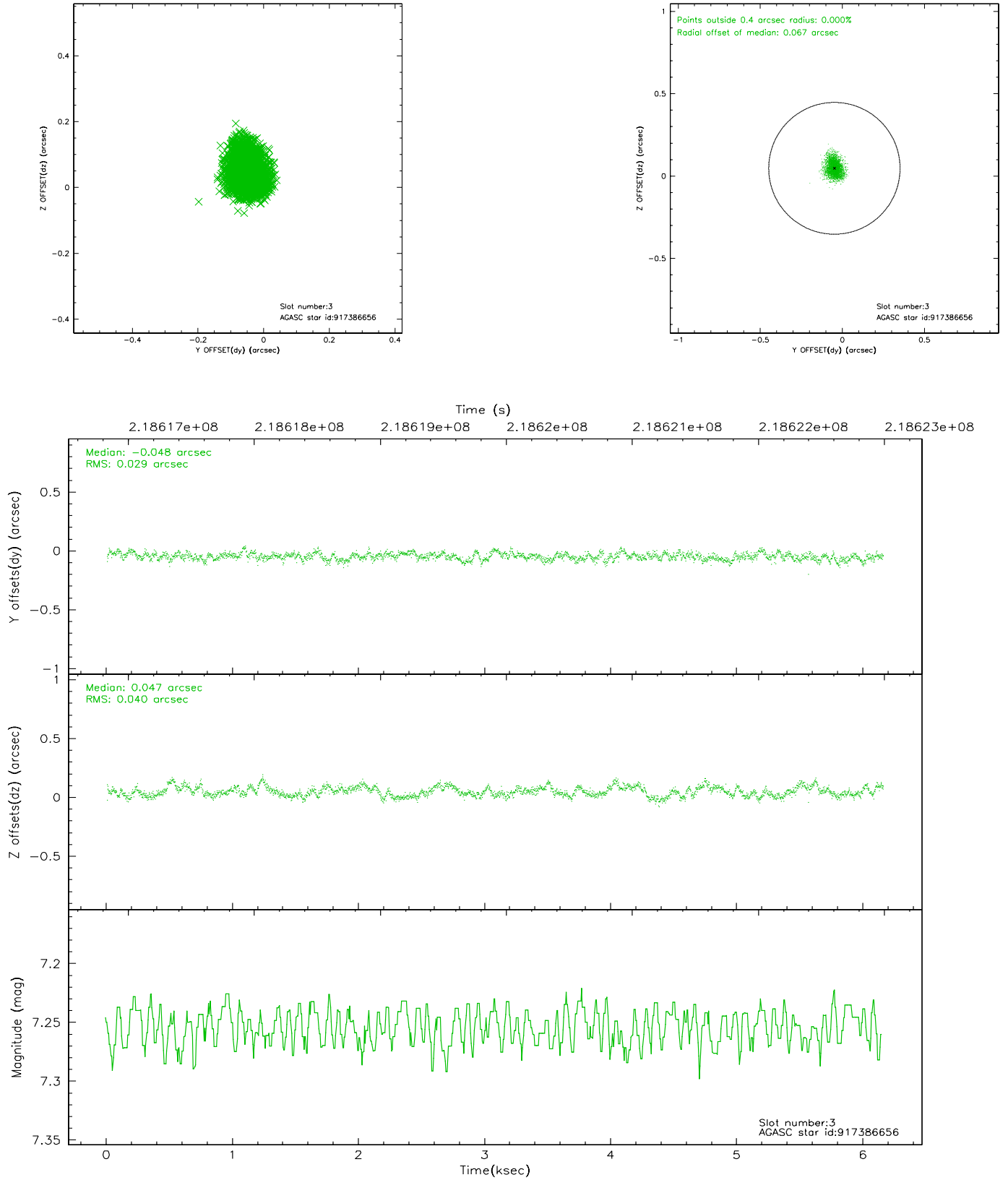


Slot Statistics

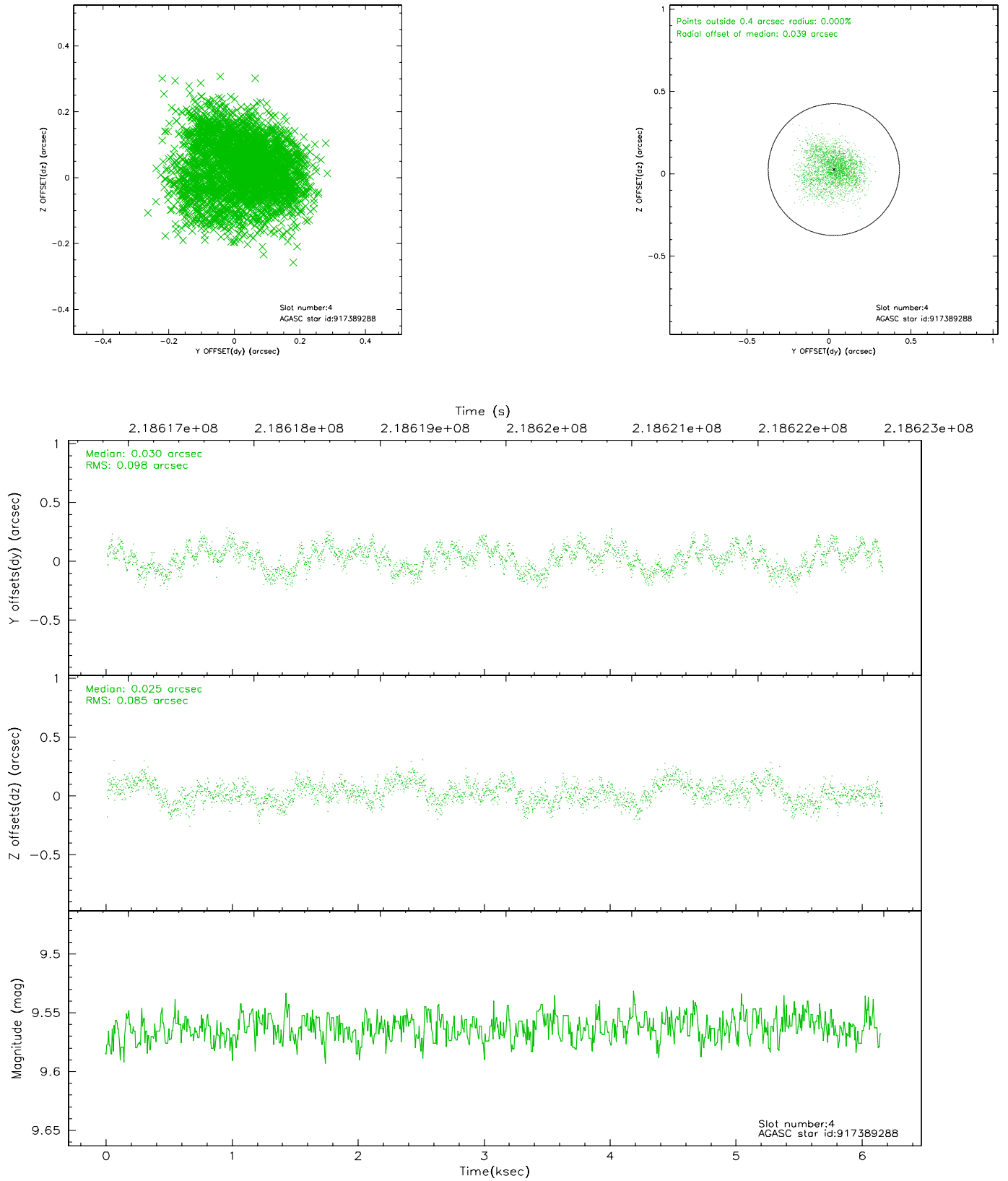
slot	status	id	mag	n_pts	med_dy	med_dz	dr1	dr2	ra	dec	mean_y	mean_z
0	FID	ACIS-S-1	7.19	1501	0.020	-0.010	0.006	0.011	0.000000	0.000000	935.42	-1726.83
1	FID	ACIS-S-5	7.24	1502	-0.056	0.018	0.007	0.011	0.000000	0.000000	-1813.13	169.74
2	FID	ACIS-S-6	7.35	1502	0.014	0.003	0.007	0.011	0.000000	0.000000	399.92	814.79
3	GUIDE	917386656	7.25	3004	-0.048	0.047	0.053	0.084	15.342124	-33.359890	-388.37	1544.09
4	GUIDE	917389288	9.56	3004	0.030	0.025	0.144	0.215	15.394706	-33.185862	-786.47	2053.41
5	GUIDE	917650528	8.72	3001	-0.076	-0.044	0.089	0.140	14.274554	-33.869842	-879.41	-2112.29
6	GUIDE	917651768	9.62	2987	-0.084	0.026	0.164	0.245	14.115744	-33.817552	-1316.12	-2378.46
7	GUIDE	917651048	9.66	2999	0.186	-0.058	0.116	0.182	14.655628	-34.424089	1396.07	-2419.38

2.4 Star Slots

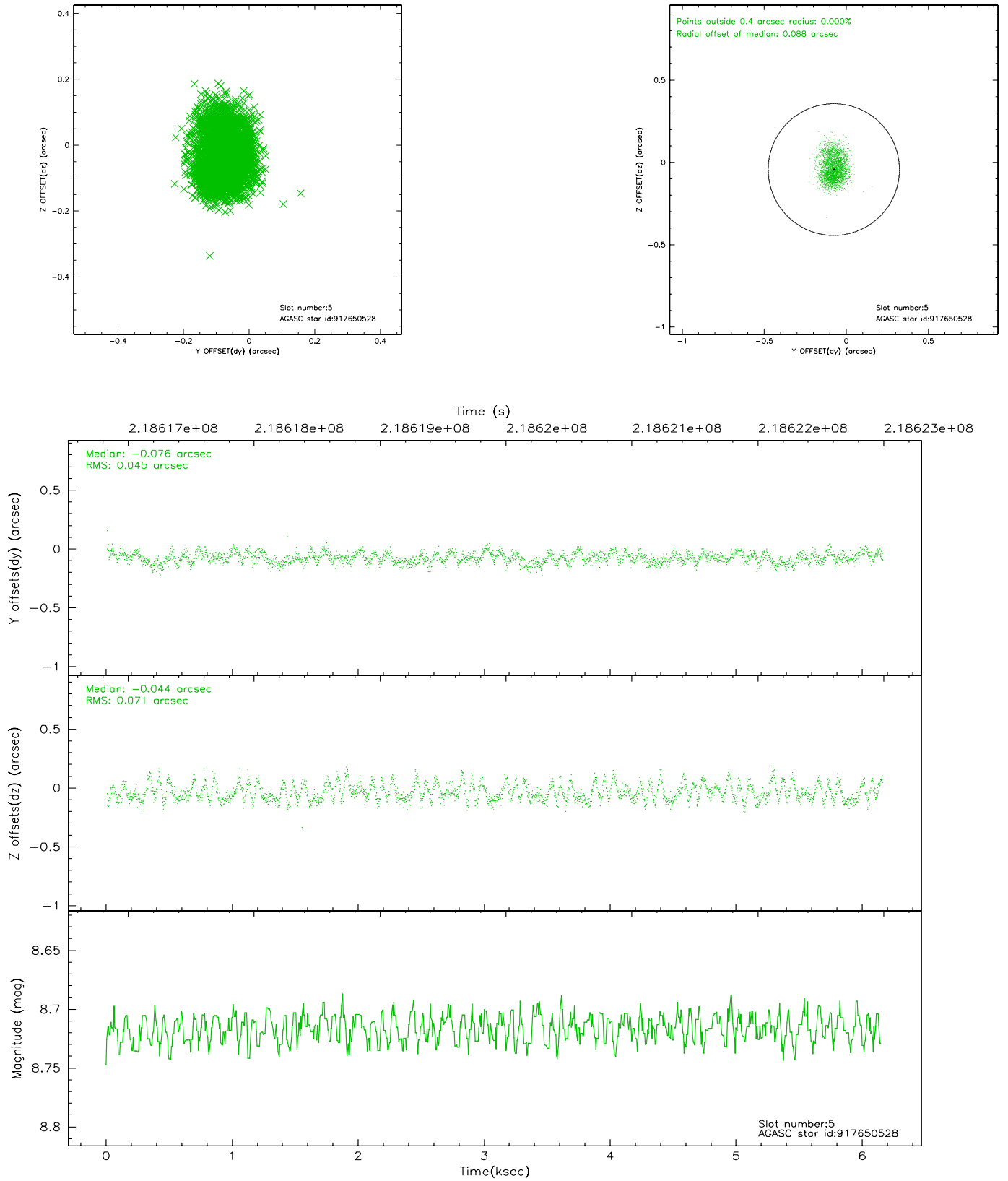
2.4.1 Slot 3



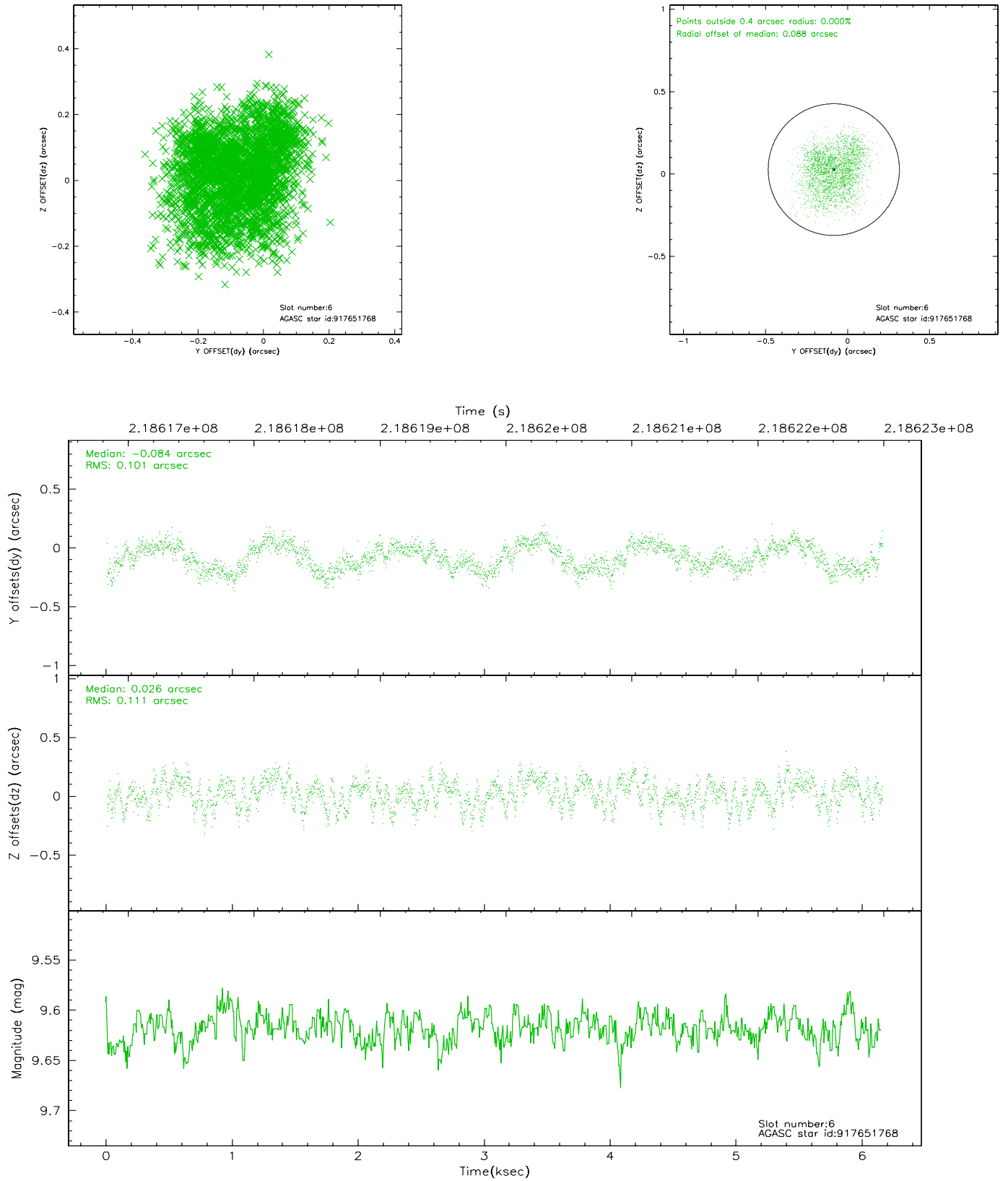
2.4.2 Slot 4



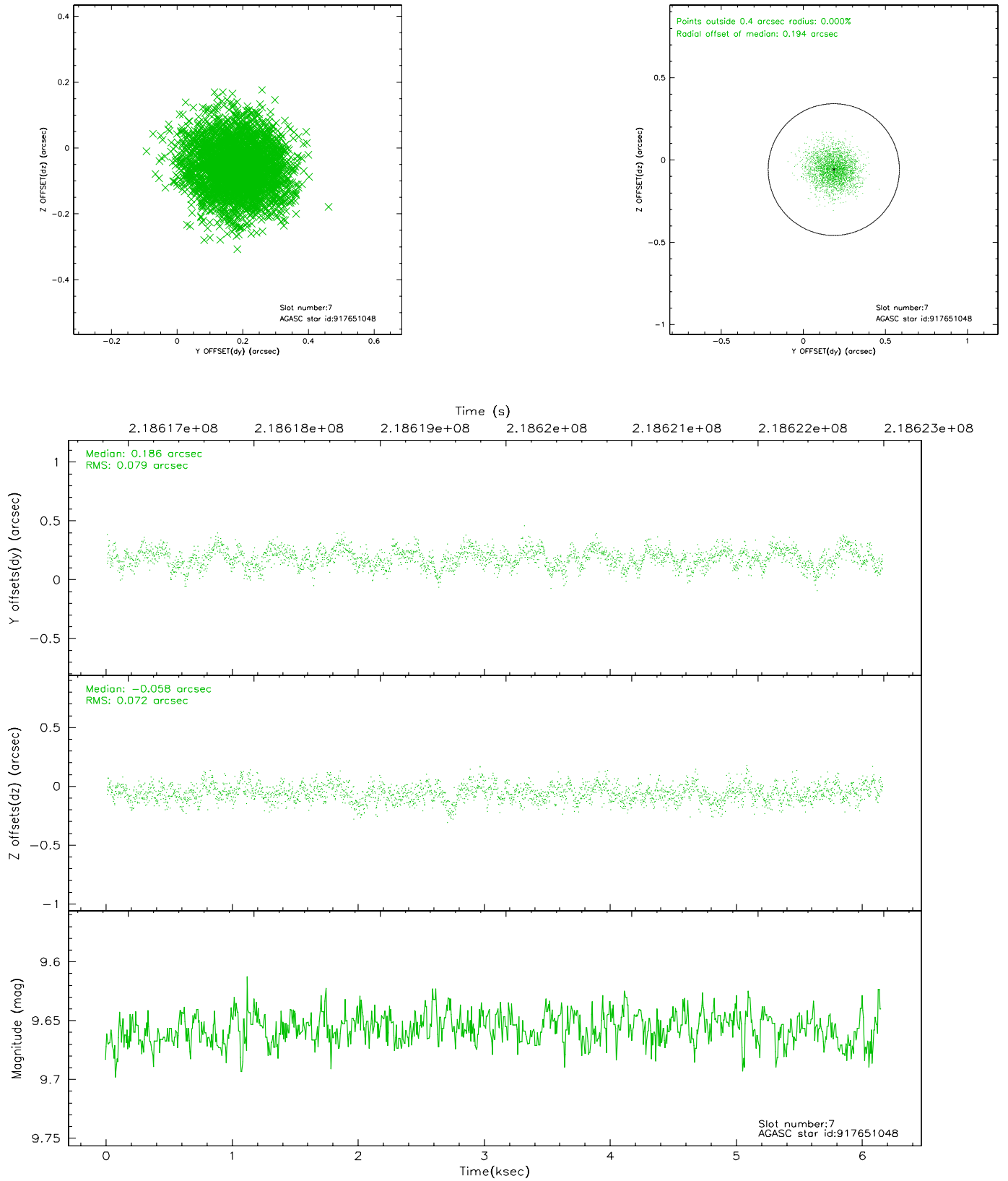
2.4.3 Slot 5



2.4.4 Slot 6

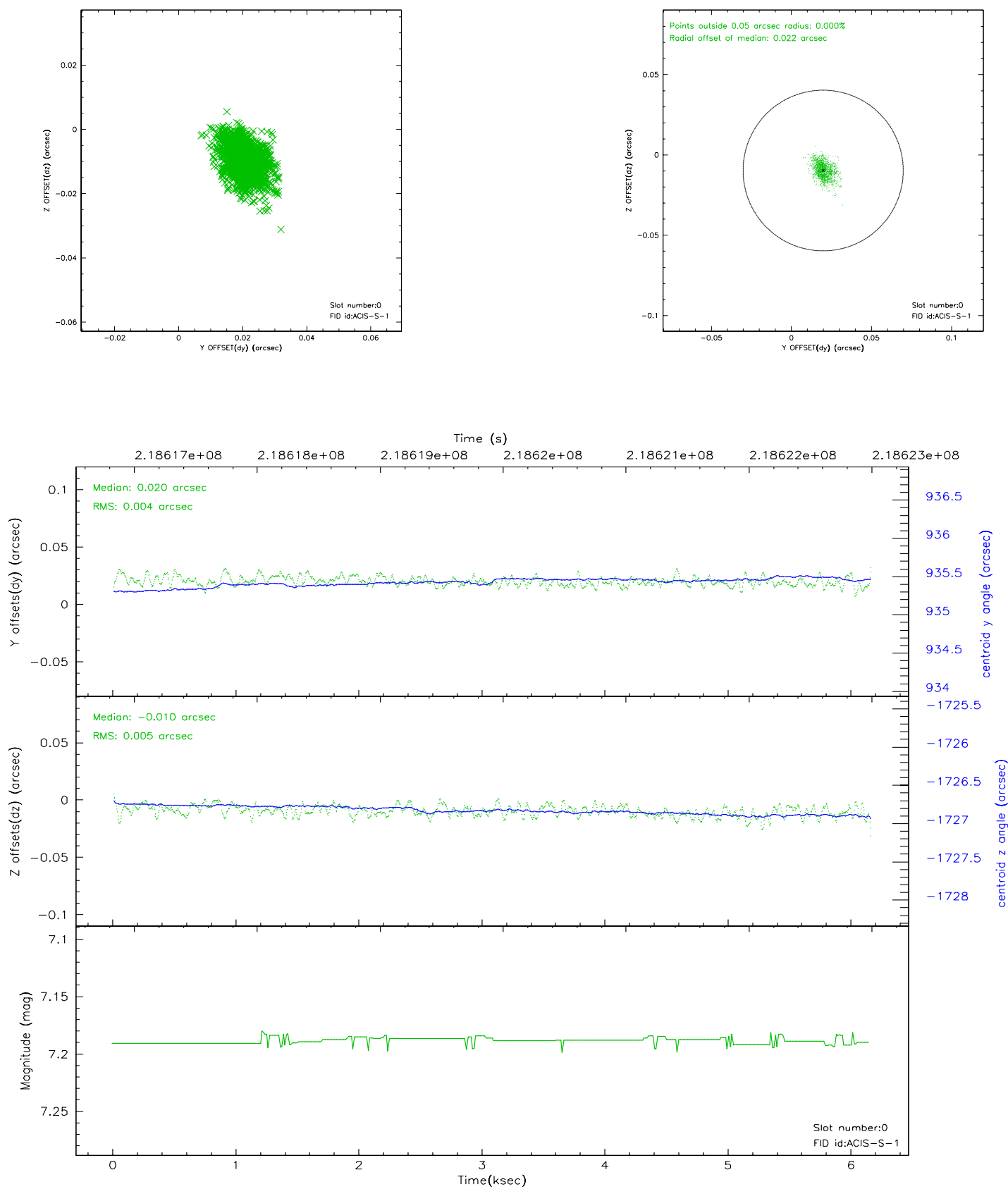


2.4.5 Slot 7

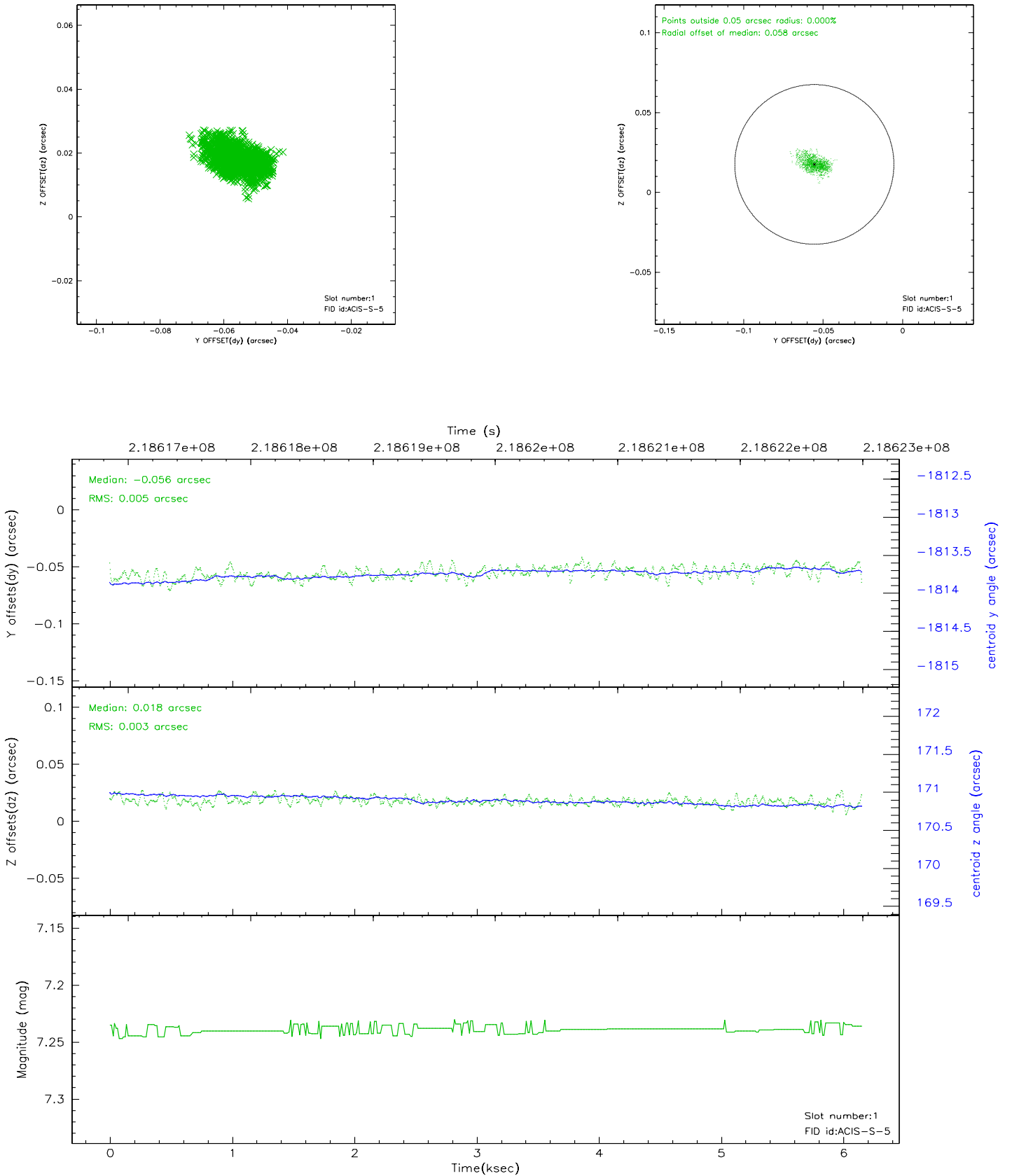


2.5 FID Slots

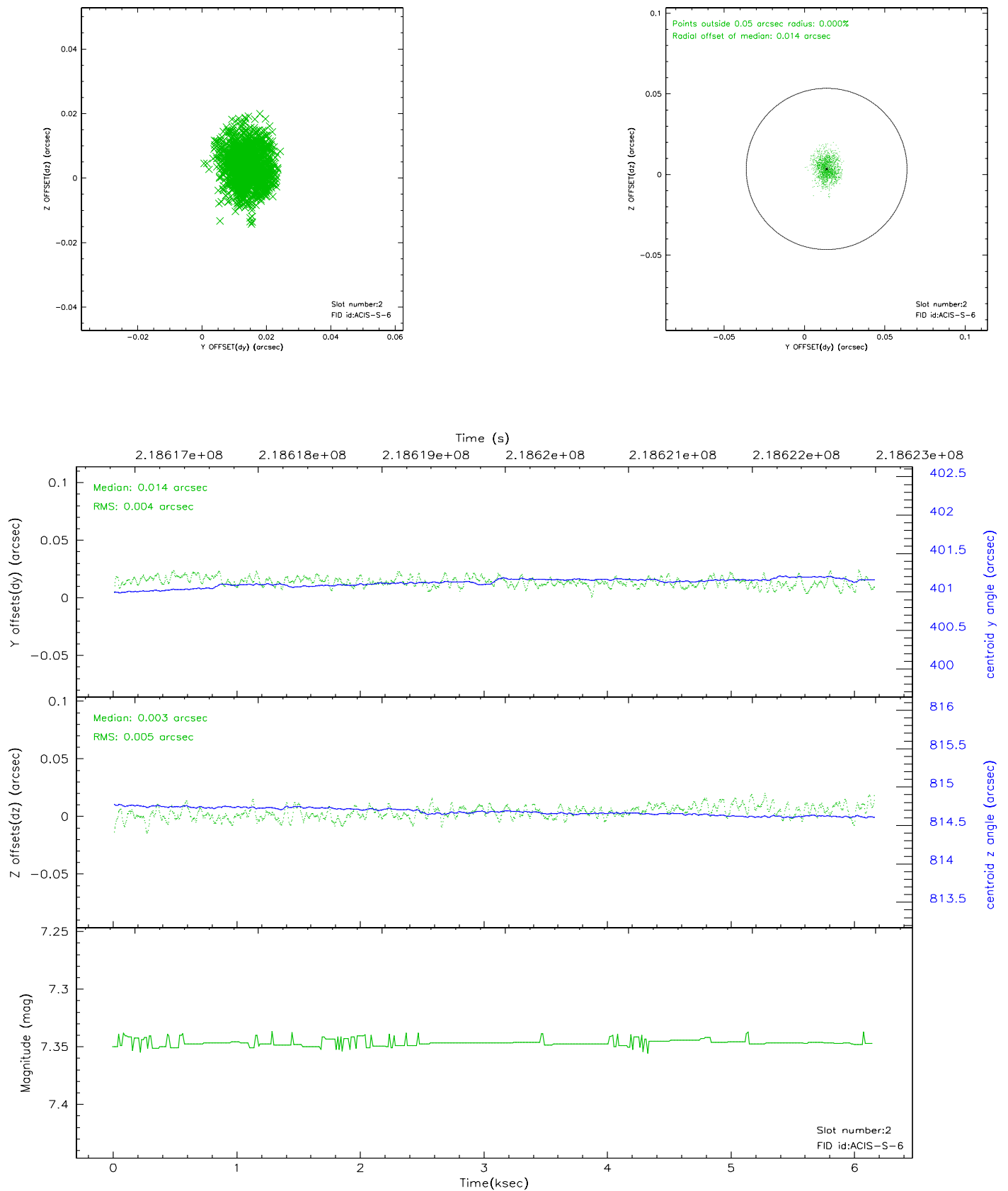
2.5.1 Slot 0



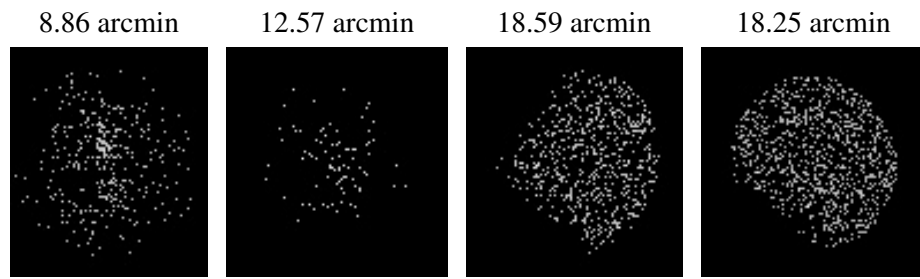
2.5.2 Slot 1



2.5.3 Slot 2



3 Point Sources



A Summary

A.1 Status

V&V Scientist	Jen Lauer
V&V Date (YYYY-MM-DD)	2006.04.10
V&V Edition	1
V&V Disposition and Status	OK
V&V Charge Time	5.753599

A.2 Comments

Monitor constraint met.