

V&V Reference Report

L2 ASCDS Version : 7.6.7.1

Observation 4713 - L2 Version 001
Chandra X-Ray Center

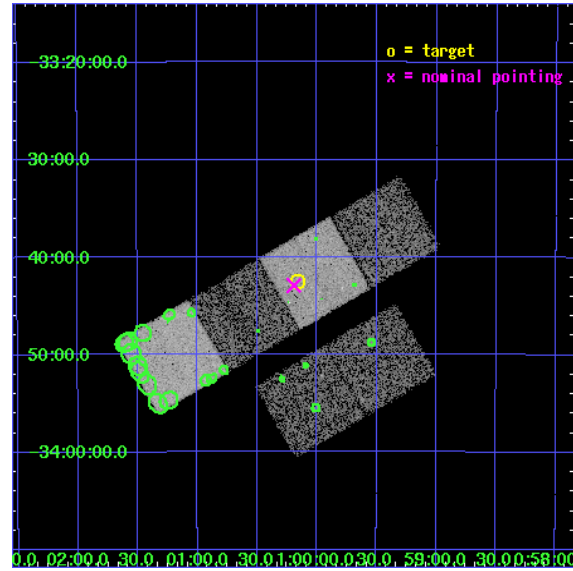
L2 Processing Date : Apr 12 2006

Contents

1	Front	2
2	OBI	3
2.1	OBI	3
2.1.1	Images	3
2.1.2	Bias	3
2.1.3	Parameters	4
2.1.4	Events	4
2.2	Compared Parameters	5
2.3	Aspect	6
2.4	Star Slots	9
2.4.1	Slot 3	9
2.4.2	Slot 4	10
2.4.3	Slot 5	11
2.4.4	Slot 6	12
2.4.5	Slot 7	13
2.5	FID Slots	14
2.5.1	Slot 0	14
2.5.2	Slot 1	15
2.5.3	Slot 2	16
3	Point Sources	17
A	Summary	18
A.1	Status	18
A.2	Comments	18

1 Front

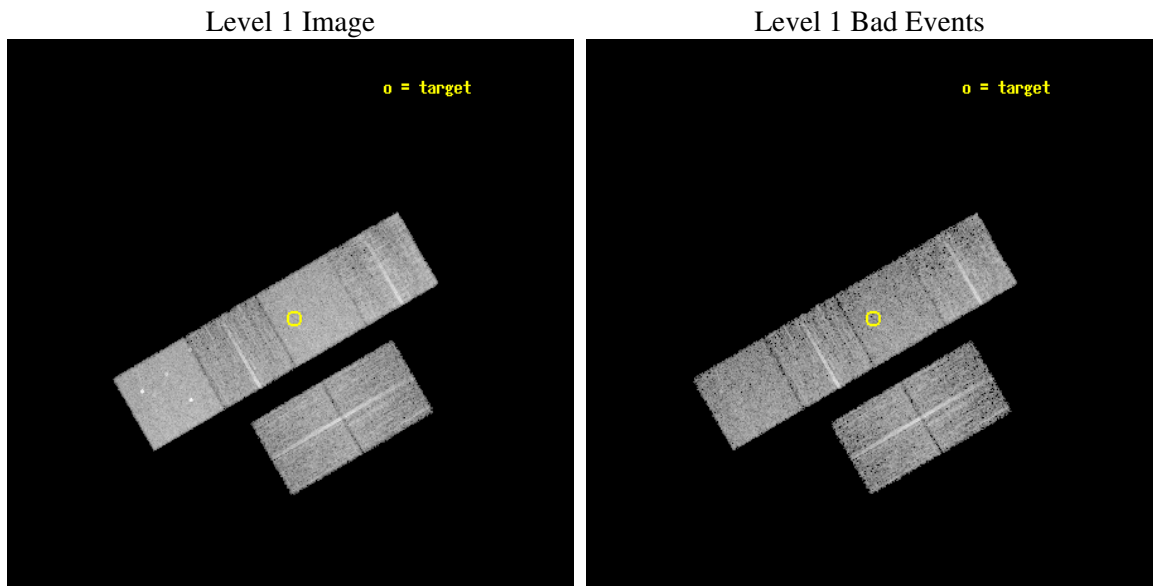
seq_num	600368
obs_id	4713
title	Using the Sculptor Dwarf Spheroidal Galaxy to Constrain X-ray Binary Production in Population II
observer	Dr. Thomas Maccarone
object	SCULPTOR DWARF SPHEROIDAL
dtcycle	0
cycle	P
ra_targ	15.039167
dec_targ	-33.708889
ra_nom	15.04802457752
dec_nom	-33.715136330083
roll_nom	329.87003467285
revision	2
ontime	6150.399977088
livetime	6072.5199092518
ontime2	6143.9180465341
ontime3	6143.9180166125
ontime5	6150.399977088
ontime6	6150.399977088
ontime7	6150.399977088
ontime8	6147.1591263711
l2events	74726



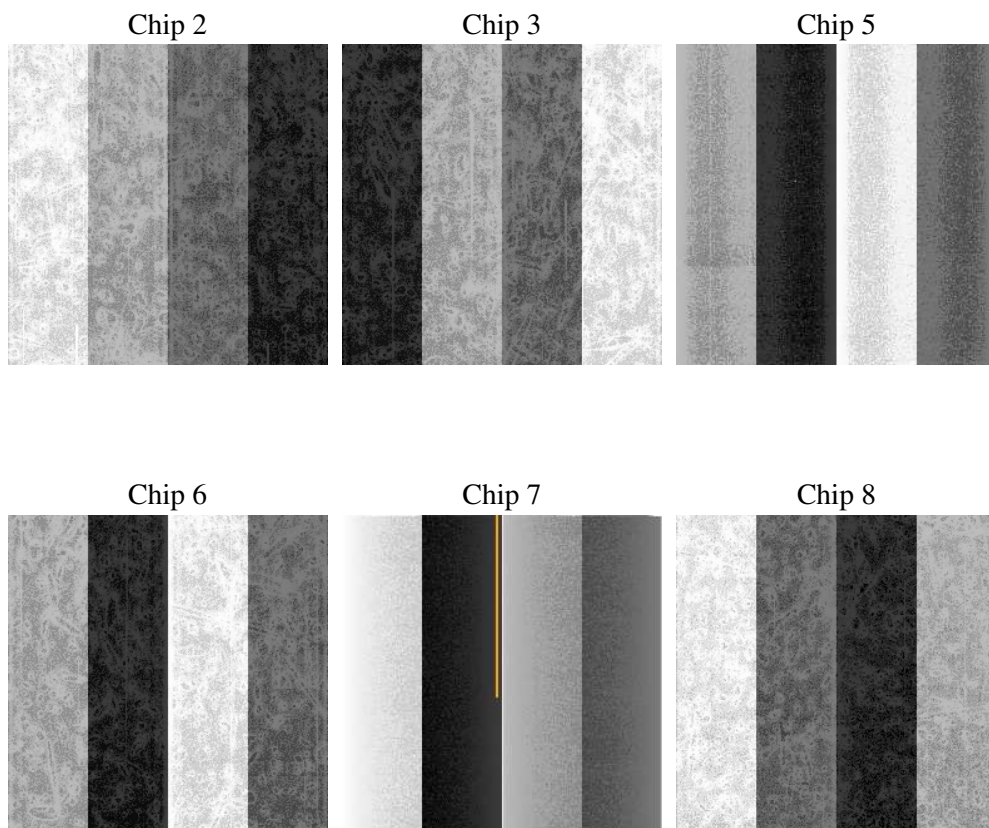
2 OBI

2.1 OBI

2.1.1 Images



2.1.2 Bias



2.1.3 Parameters

obi_num	0
ascdsver	7.6.7.1
caldsver	3.2.1
date	2006-04-12T05:10:04
revision	2

sched_exp_time	6000.000000
ontime	6161.1451664269
ontime2	6154.663235873
ontime3	6154.6632059515
ontime5	6161.1451863348
ontime6	6161.1451464891
ontime7	6161.1451664269
ontime8	6157.9043157101
l1events	343332

2.1.4 Events

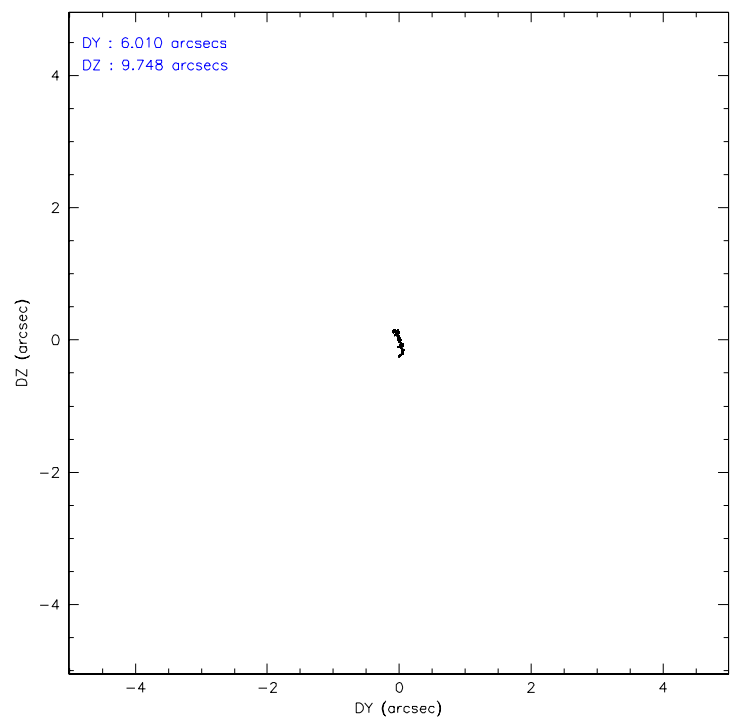
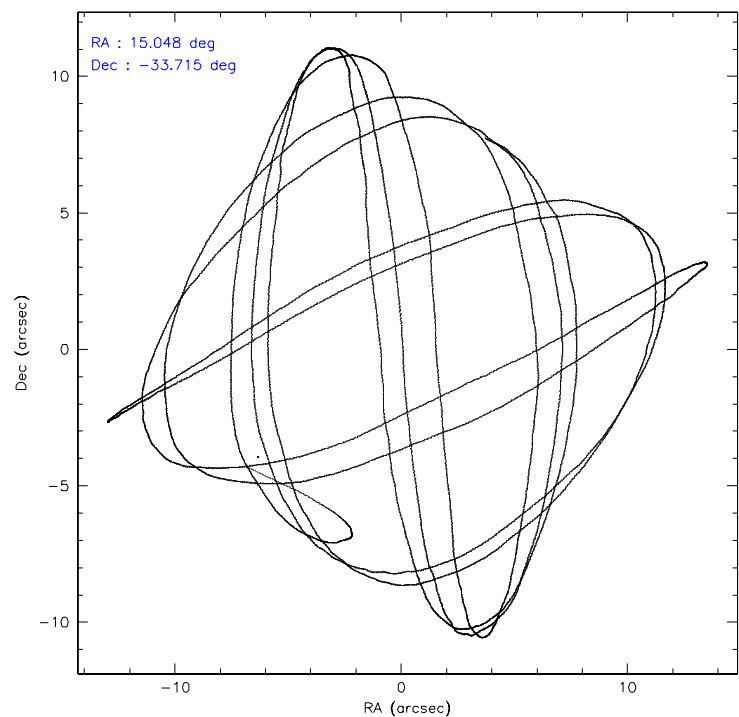
	ccd 2	ccd 3	ccd 5	ccd 6	ccd 7	ccd 8
level 1 events	49594	46253	71363	49496	65307	61319
rejected events	43660	40753	39402	43701	40480	48325
rejected %	88%	88%	55%	88%	61%	78%

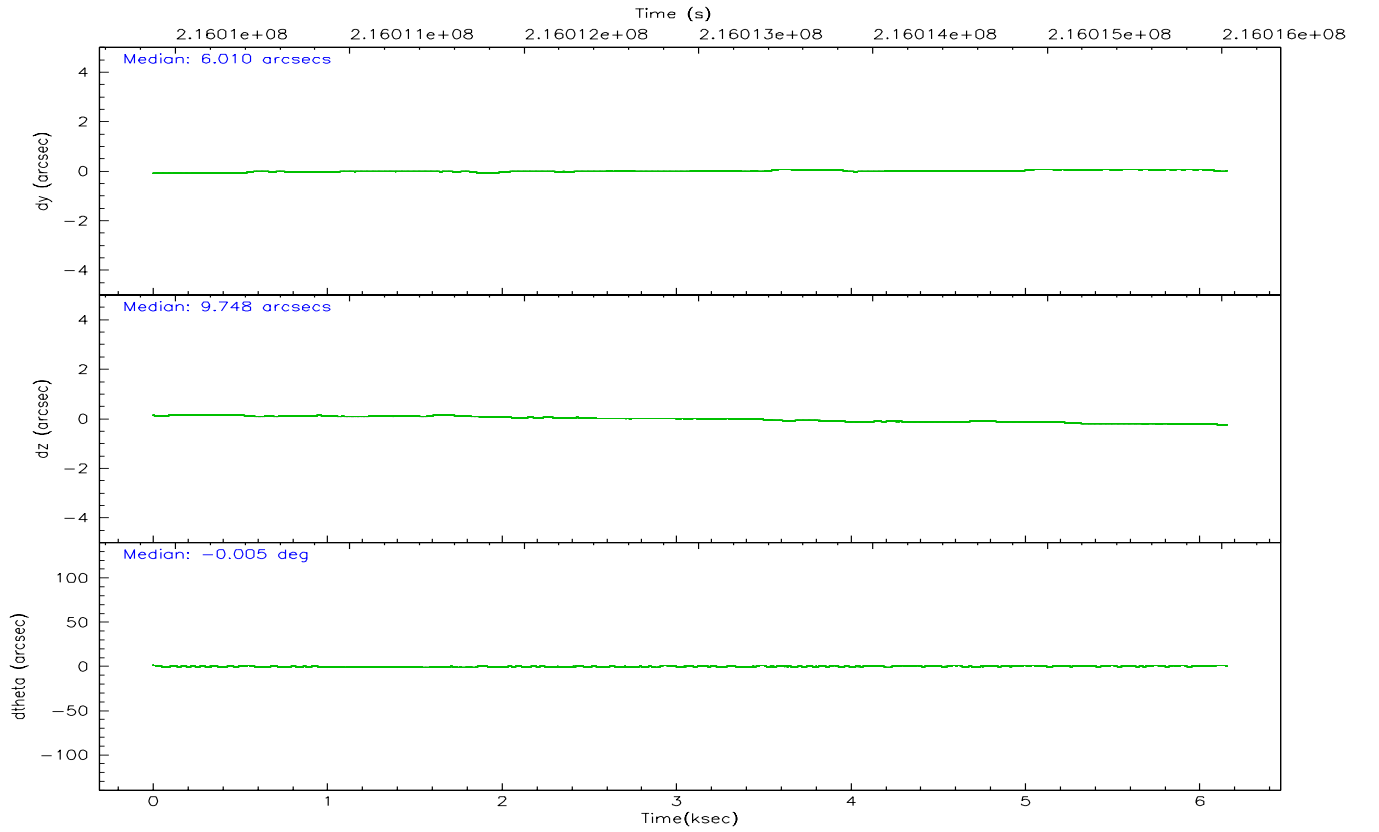
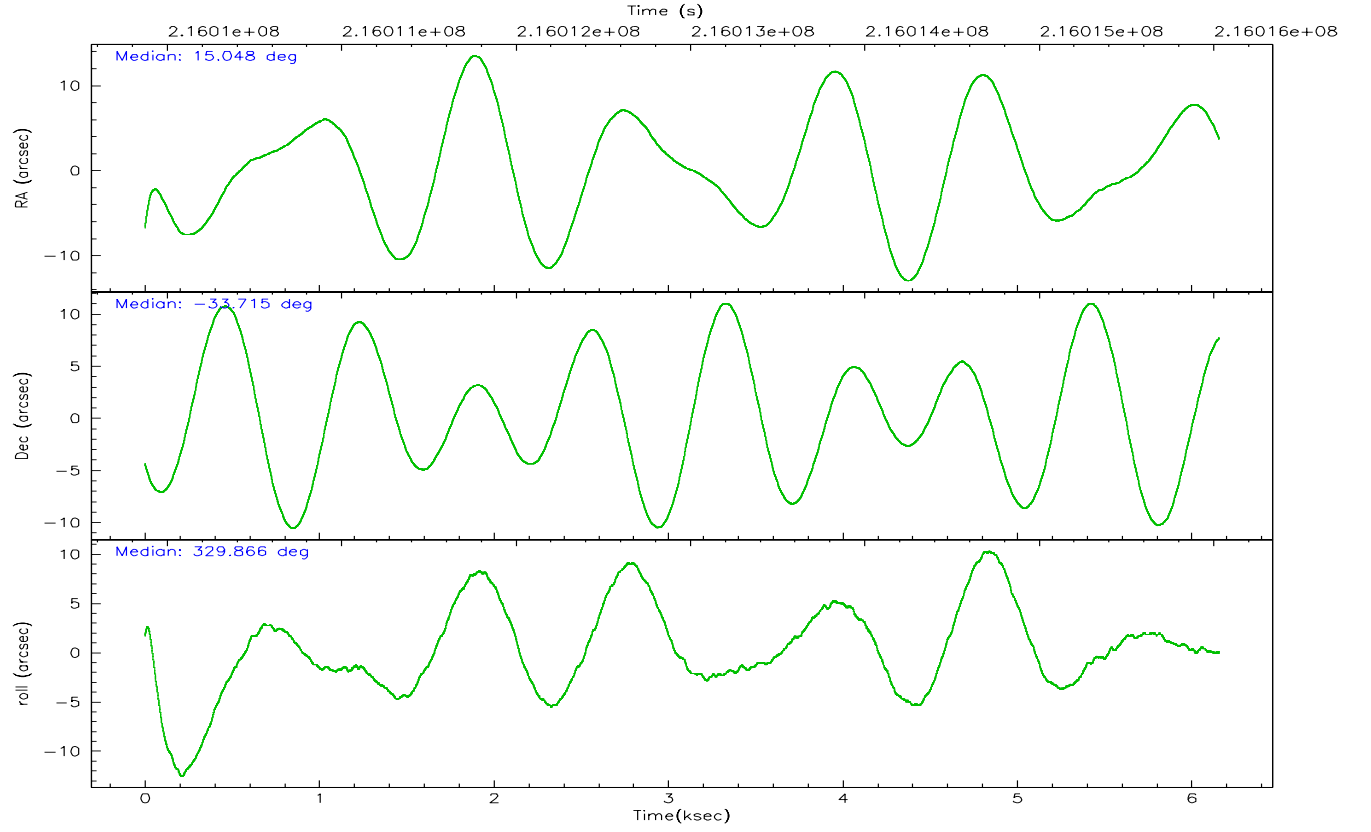
	ccd 2	ccd 3	ccd 5	ccd 6	ccd 7	ccd 8
grade 0 events	2676	2420	2738	2314	1431	4087
	5%	5%	3%	4%	2%	6%
grade 1 events	40	26	110	25	45	35
	0%	0%	0%	0%	0%	0%
grade 2 events	1216	1039	9953	1263	6234	2801
	2%	2%	13%	2%	9%	4%
grade 3 events	537	536	645	555	1221	1426
	1%	1%	0%	1%	1%	2%
grade 4 events	565	555	692	526	1188	1346
	1%	1%	0%	1%	1%	2%
grade 5 events	1847	2104	3446	2249	4292	2884
	3%	4%	4%	4%	6%	4%
grade 6 events	949	955	17978	1150	14789	3346
	1%	2%	25%	2%	22%	5%
grade 7 events	41764	38618	35801	41414	36107	45394
	84%	83%	50%	83%	55%	74%

2.2 Compared Parameters

Parameter	Planned	Actual	Parameter	Planned	Actual
Instrument	ACIS	ACIS	Obspar format version number	6	6
Detector	ACIS-235678	ACIS-235678	Obspar file type	PREDICTED	ACTUAL
Grating	NONE	NONE	Obspar update status	NONE	UPDATED
Data mode	VFAINT	VFAINT	On-chip summing requested	N	N
Observation mode	POINTING	POINTING	Subarray requested	NONE	NONE
Pointing RA	15.015302	15.0480245775196	Alternating exposures requested	N	N
Pointing Dec	-33.715443	-33.71513633008318	Primary exposure time	0.000000	3.2
Pointing Roll	329.695213	329.8700346728453			
SIM focus pos (mm)	-0.684267	-0.6828225247311905			
SIM defocus (mm)	0	0.001444936568705701			
SIM translation stage pos (mm)	-190.132523	-190.1400660498719			
SIM translation stage offset (mm)	0	0.00754346686406393			
Observation start time	216010028.184000	216008968.04101			
Observation start date	2004-11-05T02:46:04	2004-11-05T02:29:28			
Observation end time	216016028.184000	216016720.62886			
Observation end date	2004-11-05T04:26:04	2004-11-05T04:38:40			
Read mode	TIMED	TIMED			

2.3 Aspect



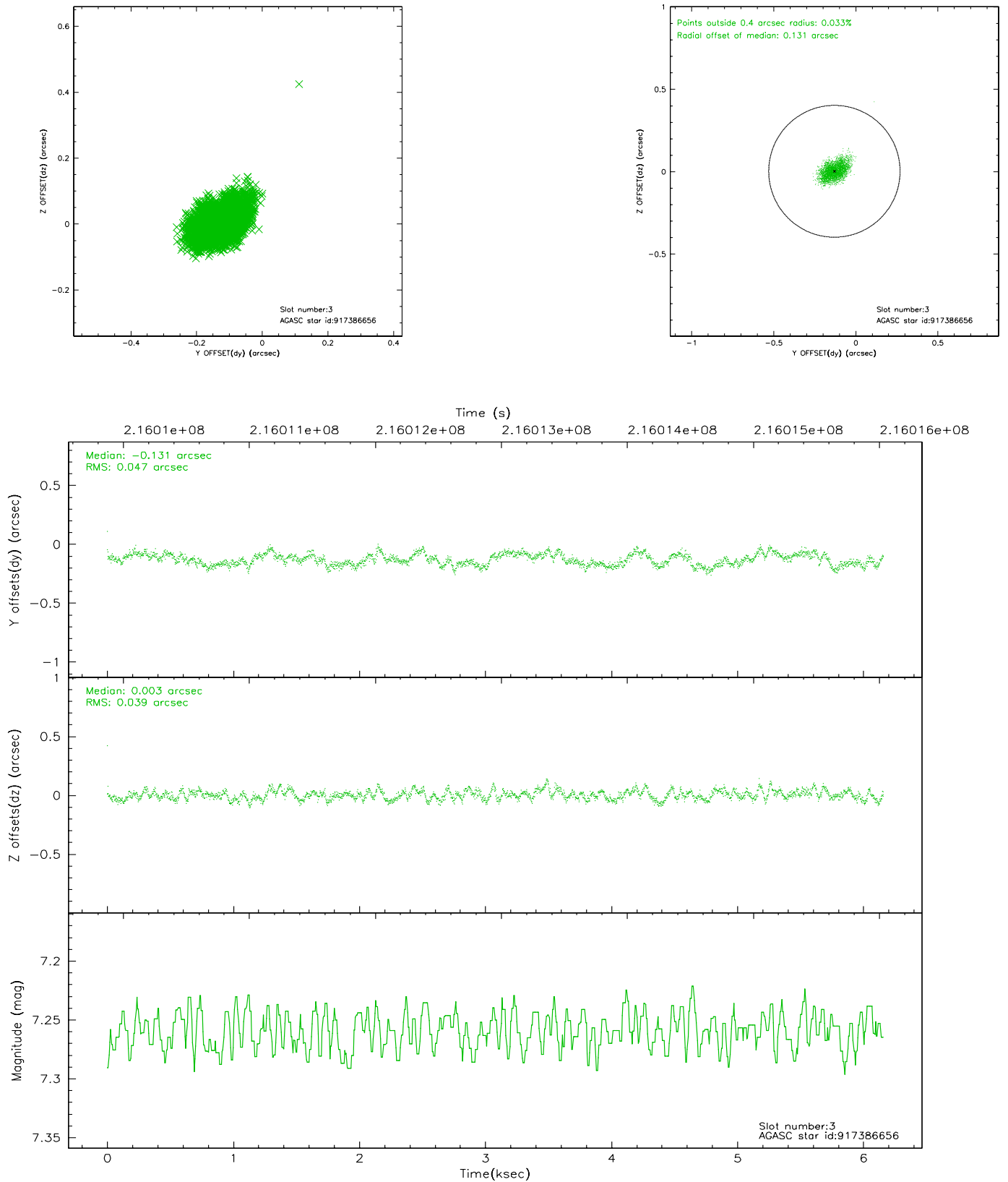


Slot Statistics

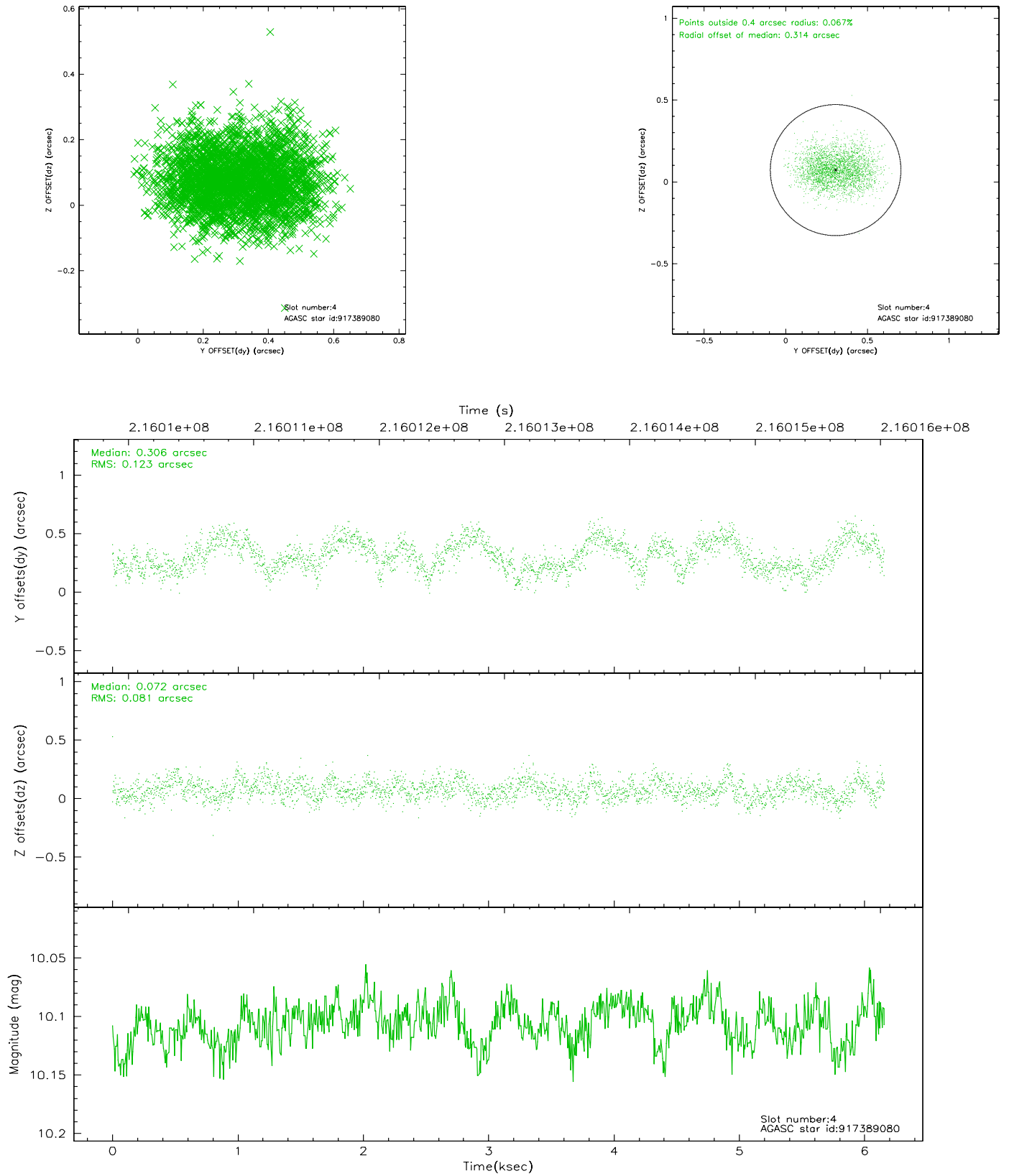
slot	status	id	mag	n_pts	med_dy	med_dz	dr1	dr2	ra	dec	mean_y	mean_z
0	FID	ACIS-S-2	7.10	1502	-0.053	-0.010	0.008	0.013	0.000000	0.000000	-758.76	-1730.99
1	FID	ACIS-S-4	7.20	1502	0.053	0.028	0.005	0.008	0.000000	0.000000	2154.16	176.58
2	FID	ACIS-S-5	7.23	1501	-0.031	-0.009	0.007	0.012	0.000000	0.000000	-1810.37	171.25
3	GUIDE	917386656	7.26	3005	-0.131	0.003	0.065	0.104	15.342124	-33.359890	203.31	1599.96
4	GUIDE	917389080	10.11	3004	0.306	0.072	0.159	0.249	15.722484	-33.662555	1737.52	1228.35
5	GUIDE	917390768	9.88	3004	-0.038	0.108	0.115	0.184	14.870561	-33.104152	-1486.53	1680.11
6	GUIDE	917650528	8.71	3004	-0.083	-0.047	0.071	0.110	14.274554	-33.869842	-1627.38	-1603.41
7	GUIDE	917651768	9.61	3002	-0.060	-0.140	0.099	0.163	14.115744	-33.817552	-2131.57	-1685.71

2.4 Star Slots

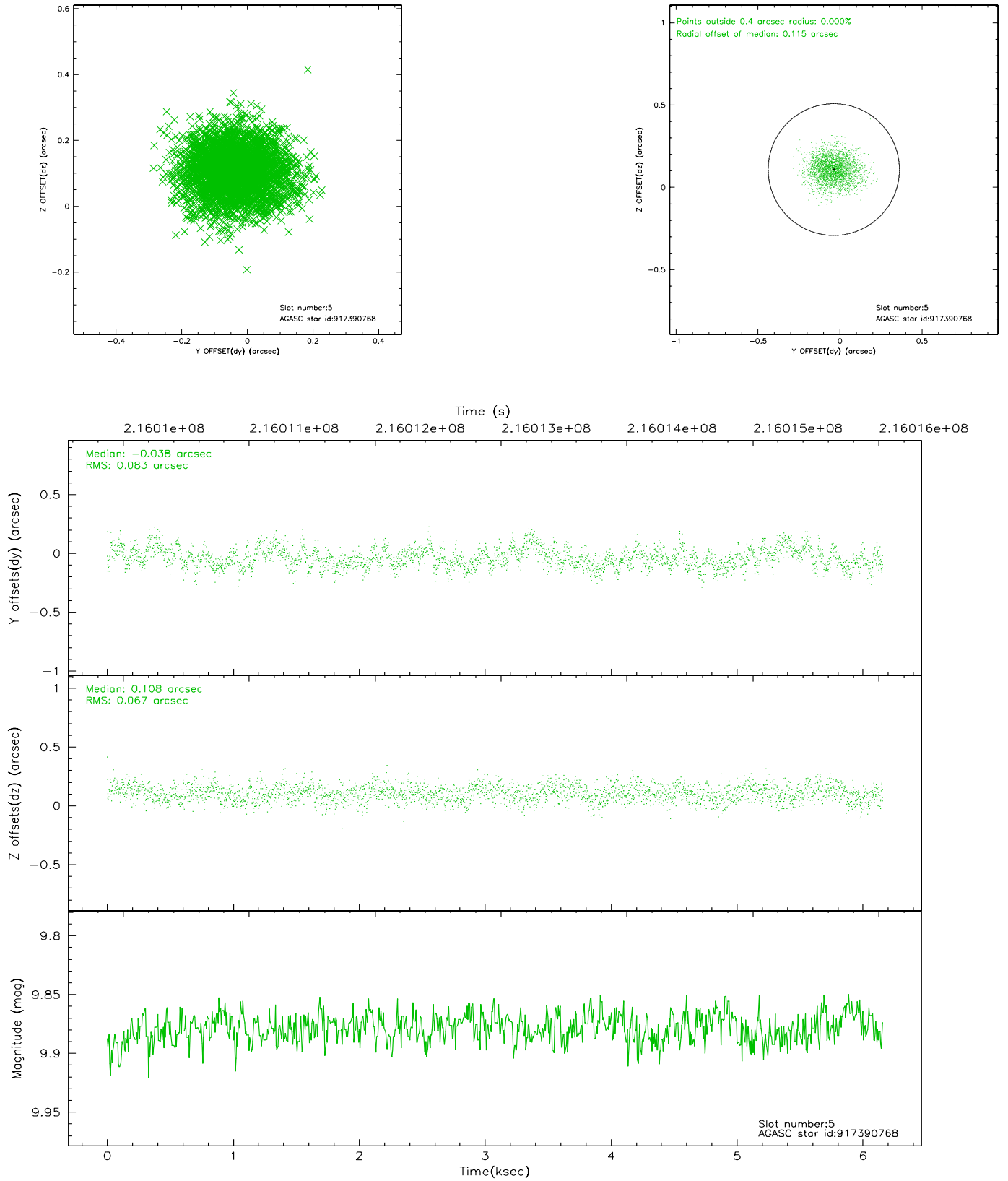
2.4.1 Slot 3



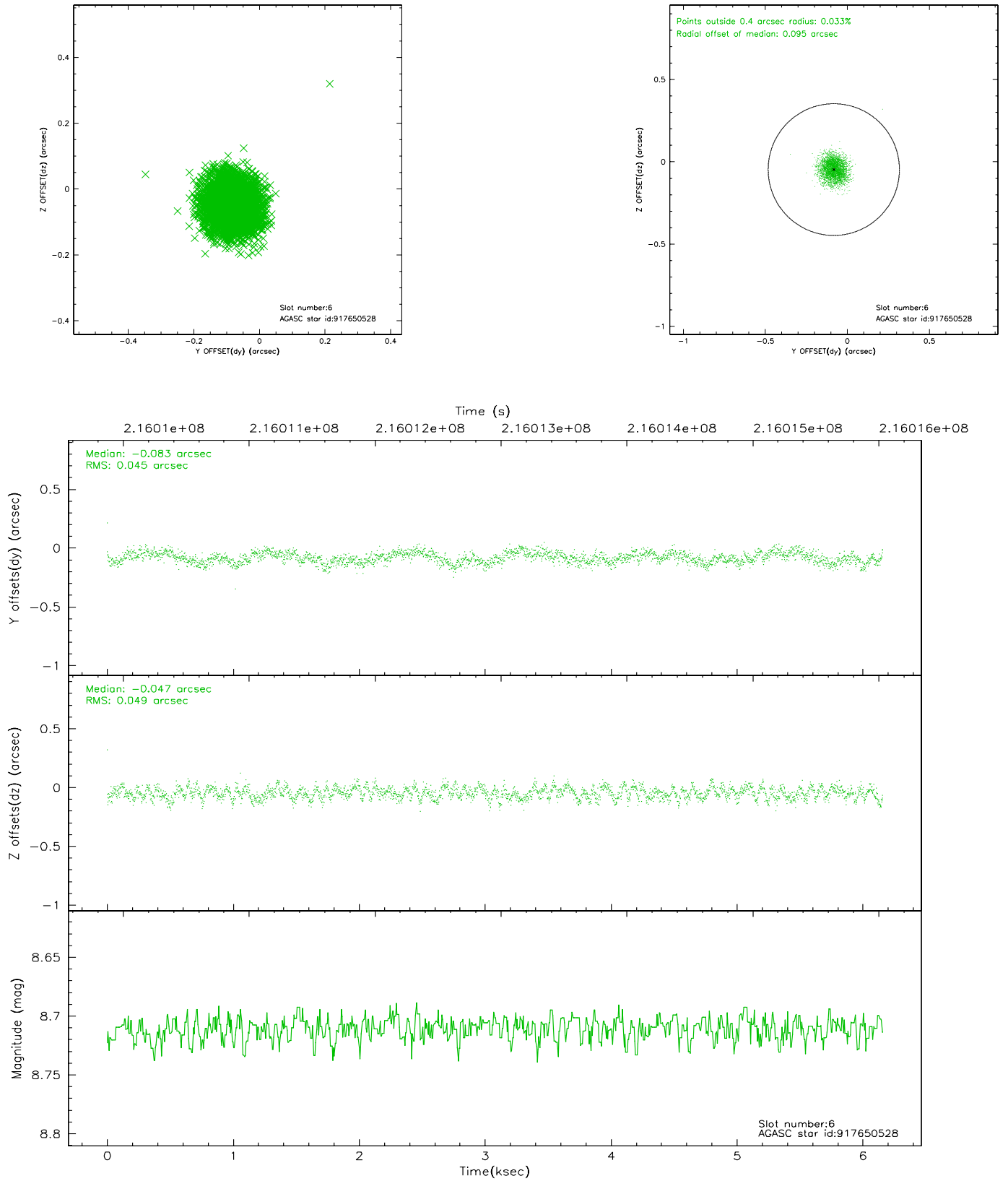
2.4.2 Slot 4



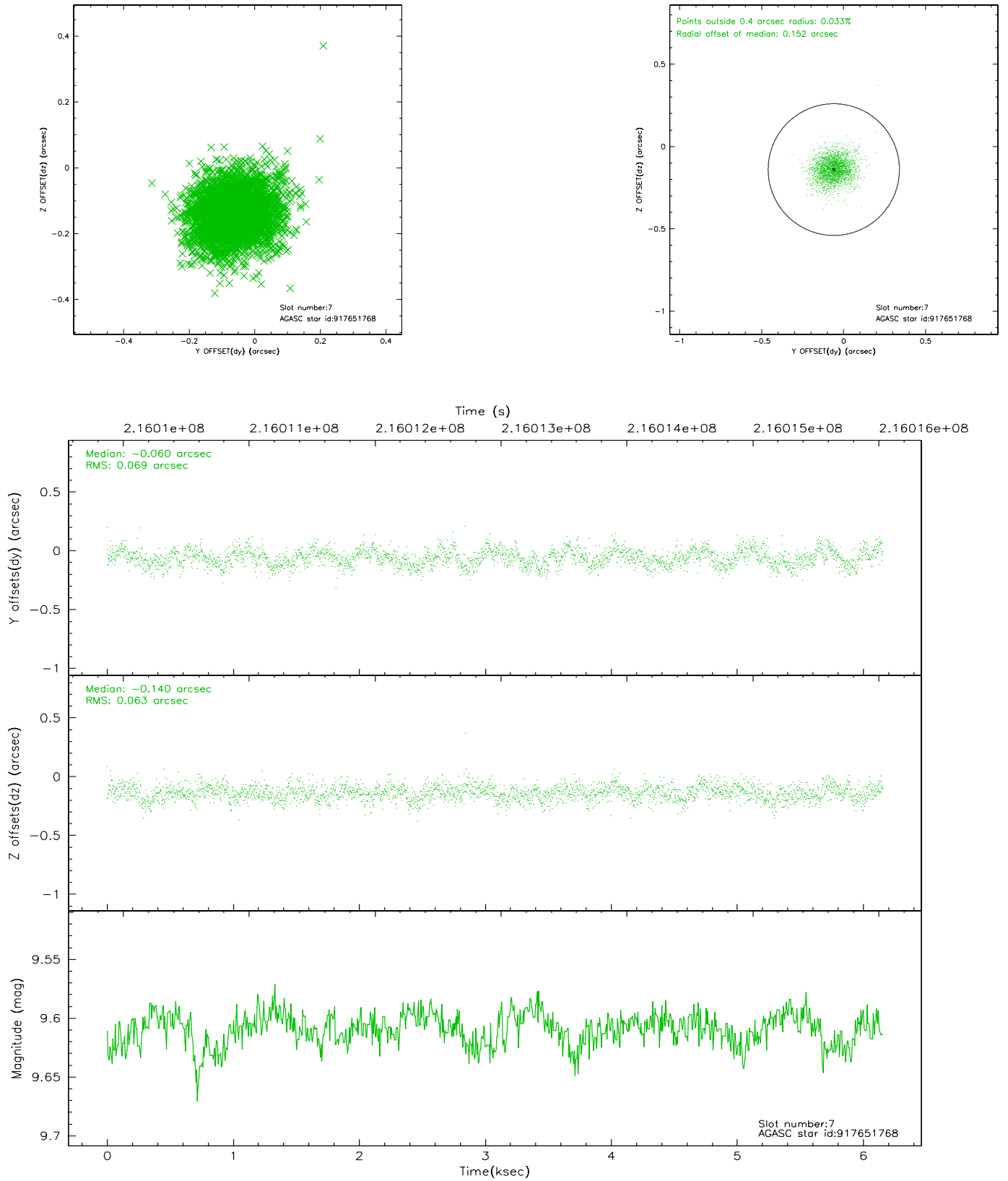
2.4.3 Slot 5



2.4.4 Slot 6

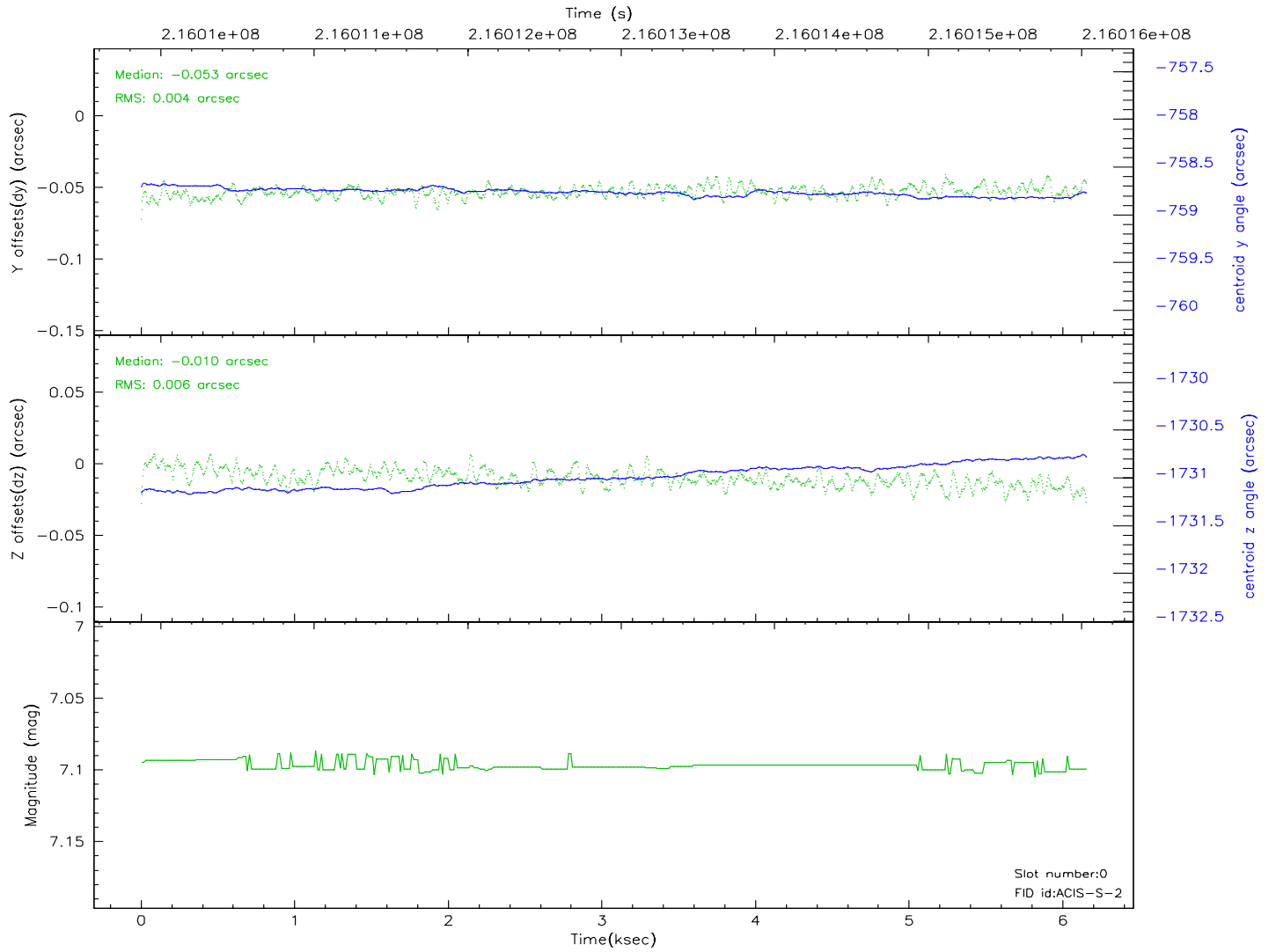
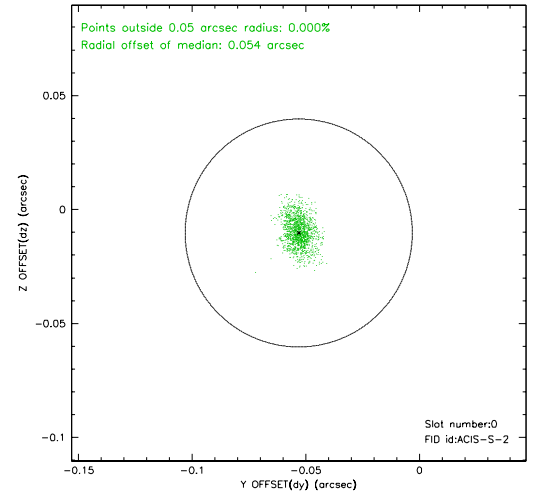
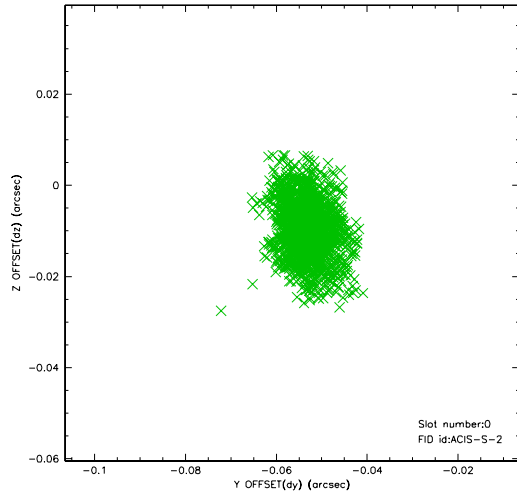


2.4.5 Slot 7

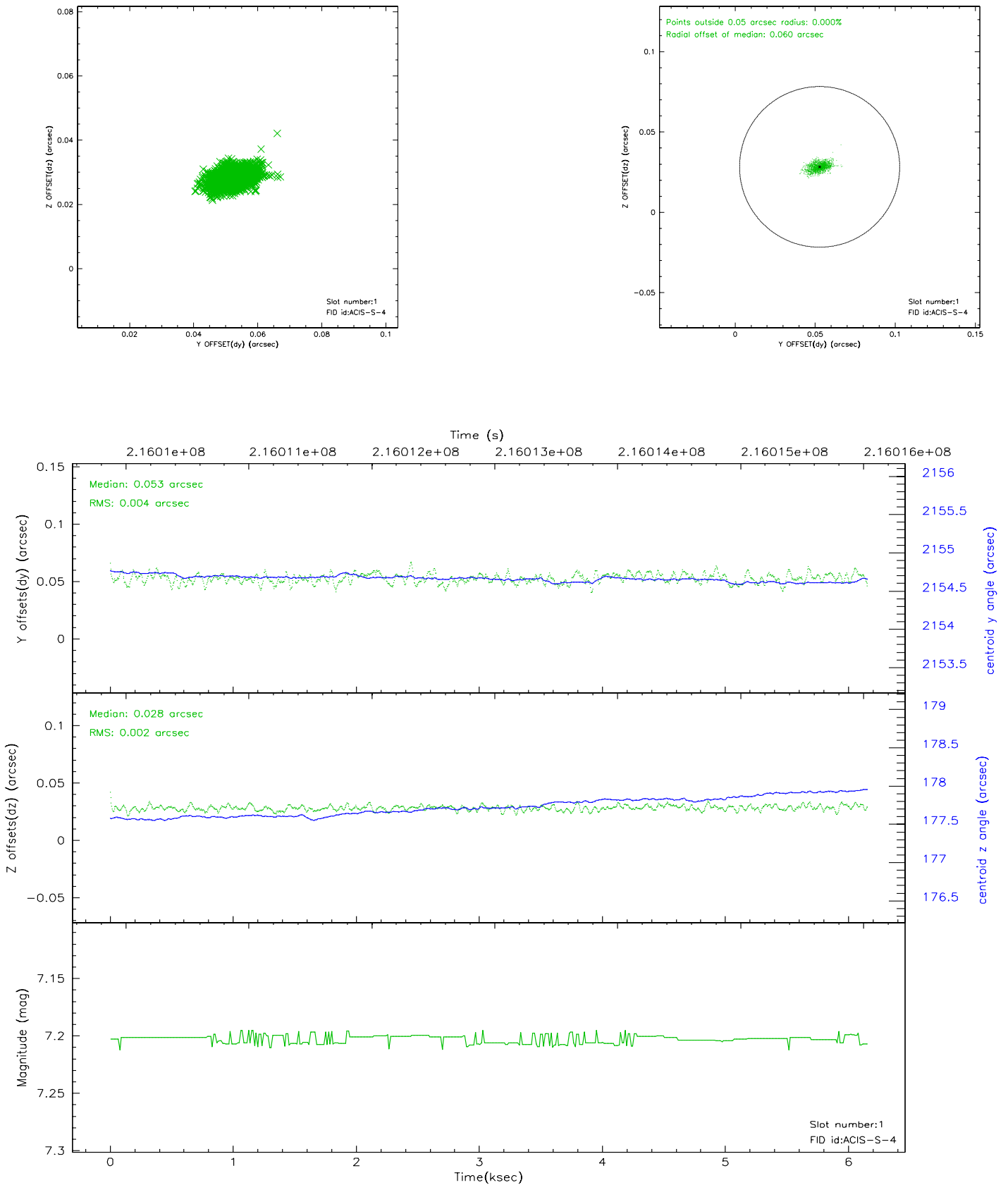


2.5 FID Slots

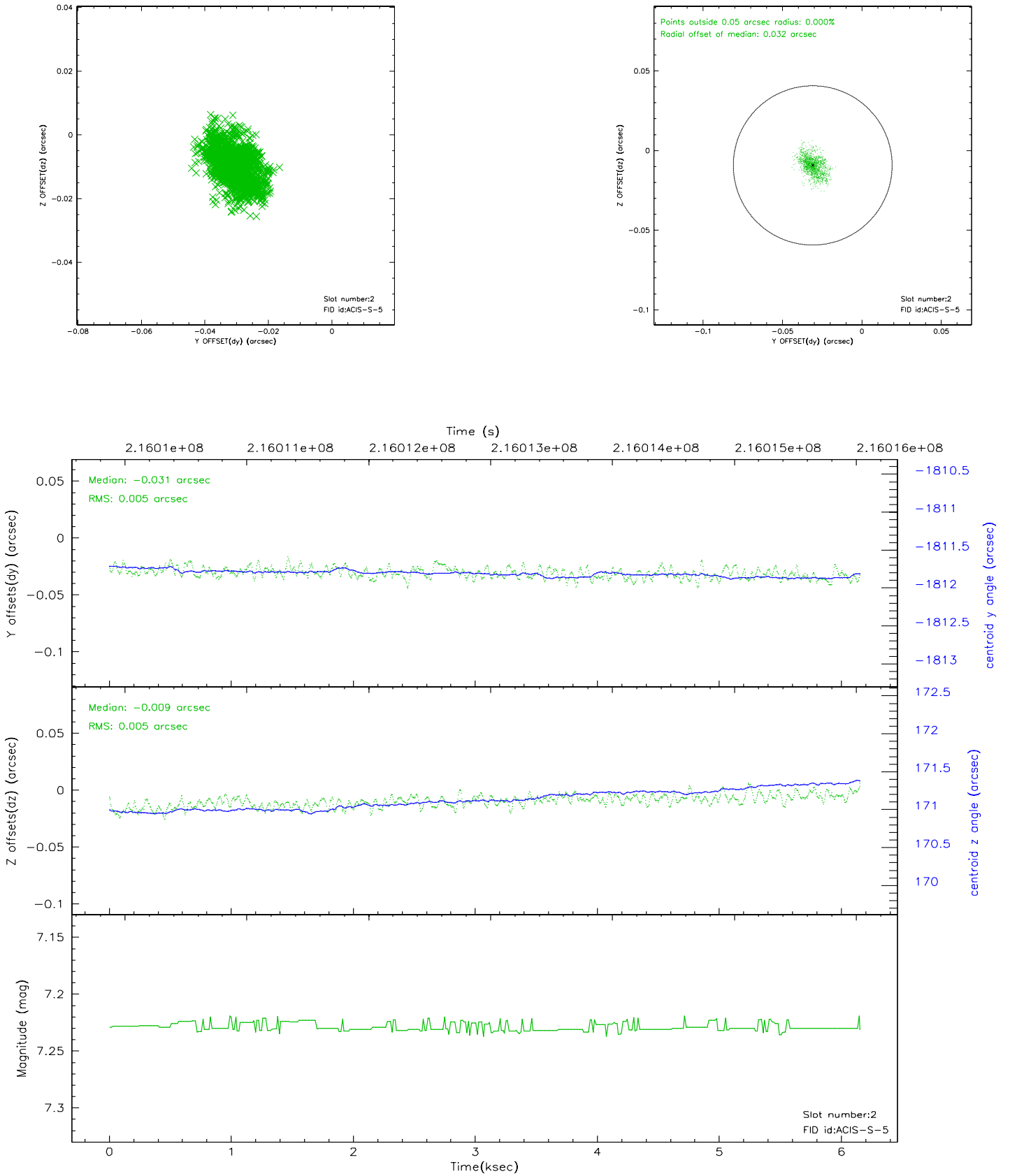
2.5.1 Slot 0



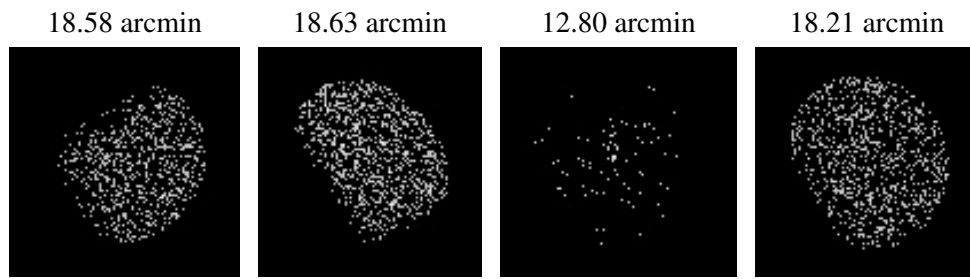
2.5.2 Slot 1



2.5.3 Slot 2



3 Point Sources



A Summary

A.1 Status

V&V Scientist	Jen Lauer
V&V Date (YYYY-MM-DD)	2006.04.12
V&V Edition	1
V&V Disposition and Status	OK
V&V Charge Time	6.15

A.2 Comments

Monitor constraint met.