

V&V Reference Report

L2 ASCDS Version : 8.5

Observation 4711 - L2 Version 3
Chandra X-Ray Center

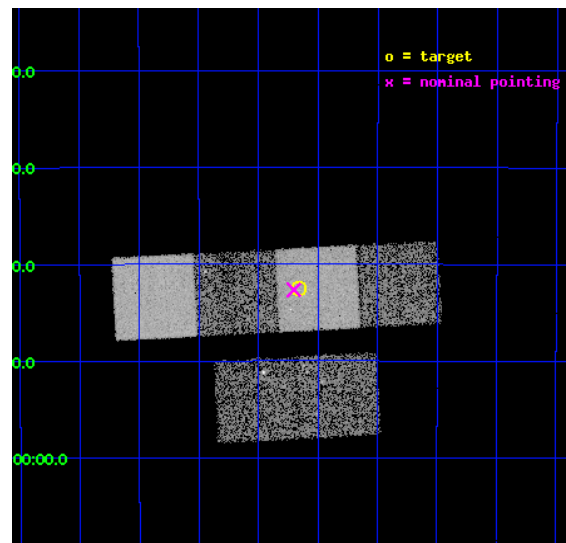
L2 Processing Date : Dec 9 2012

Contents

1	Front	2
2	OBI	3
2.1	OBI	3
2.1.1	Images	3
2.1.2	Bias	3
2.1.3	Parameters	4
2.1.4	Events	4
2.2	Compared Parameters	5
2.3	Aspect	6
2.4	Star Slots	9
2.4.1	Slot 3	9
2.4.2	Slot 4	10
2.4.3	Slot 5	11
2.4.4	Slot 6	12
2.4.5	Slot 7	13
2.5	FID Slots	14
2.5.1	Slot 0	14
2.5.2	Slot 1	15
2.5.3	Slot 2	16
A	Summary	17
A.1	Status	17
A.2	Comments	17

1 Front

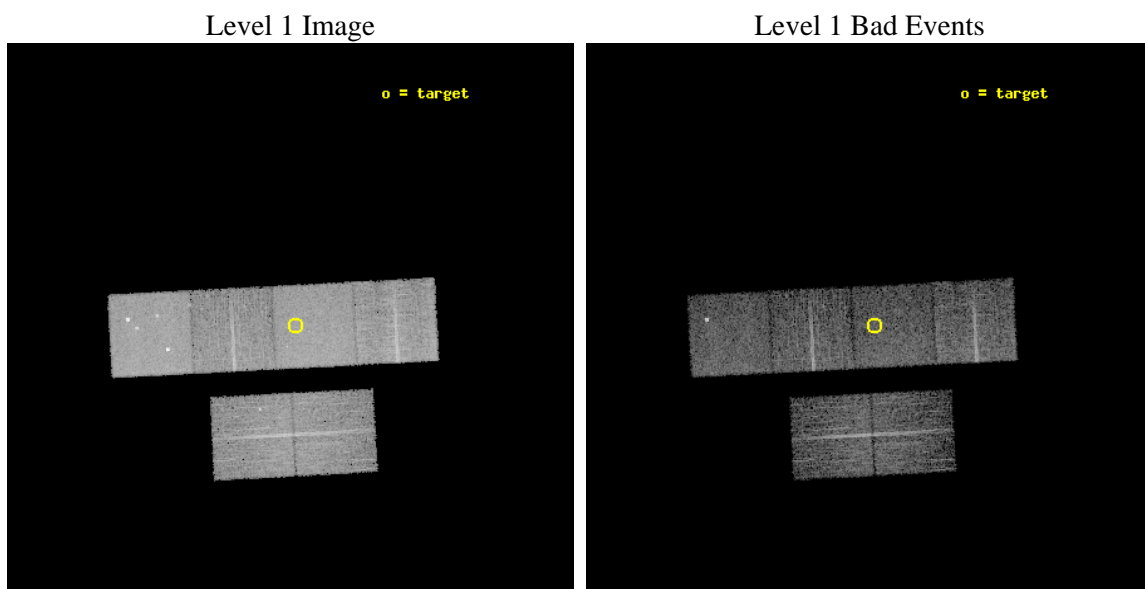
seq_num	600366	Sequence number
obs_id	4711	Observation id
title	Using the Sculptor Dwarf Spheroidal Galaxy to Constrain X-ray Binary Production in Population II	Proposal title
observer	Dr Thomas Maccarone	Principal investigator
object	SCULPTOR DWARF SPHEROIDAL	Source name
dtcycle	0	
cycle	P	events from which exps? Prim/Second/Both
ra_targ	15.039167	Observer's specified target RA [deg]
dec_targ	-33.708889	Observer's specified target Dec [deg]
ra_nom	15.050542904259	Nominal RA [deg]
dec_nom	-33.711044106876	Nominal Dec [deg]
roll_nom	356.99433896805	Nominal Roll [deg]
revision	3	Processing version of data
ontime	5955.1999778152	Sum of GTIs [s]
livetime	5879.7916499051	Livetime [s]
ontime2	5955.1999778152	Sum of GTIs [s]
ontime3	5955.1999778152	Sum of GTIs [s]
ontime5	5955.1999778152	Sum of GTIs [s]
ontime6	5955.1999778152	Sum of GTIs [s]
ontime7	5955.1999778152	Sum of GTIs [s]
ontime8	5955.1999778152	Sum of GTIs [s]
l2events	75046	Number of level 2 events



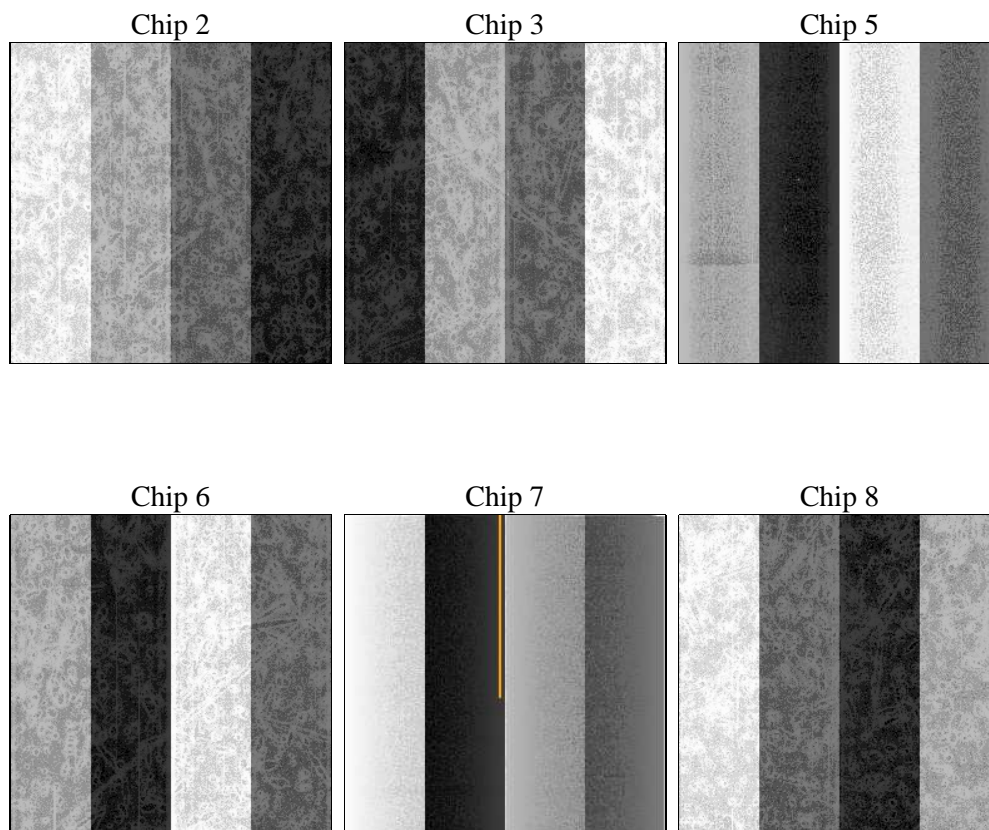
2 OBI

2.1 OBI

2.1.1 Images



2.1.2 Bias



2.1.3 Parameters

obi_num	0	Obi number	sched_exp_time	6000.000000	[s] Scheduled observation exposure time
ascdsver	8.5	Processing system revision	ontime	5955.1999778152	Sum of GTIs [s]
caldbver	4.5.4	 	ontime2	5955.1999778152	Sum of GTIs [s]
date	2012-12-09T20:13:04	Date and time of file creation	ontime3	5955.1999778152	Sum of GTIs [s]
revision	3	Processing version of data	ontime5	5955.1999778152	Sum of GTIs [s]
			ontime6	5955.1999778152	Sum of GTIs [s]
			ontime7	5955.1999778152	Sum of GTIs [s]
			ontime8	5955.1999778152	Sum of GTIs [s]
			l1events	332813	Number of level 1 events

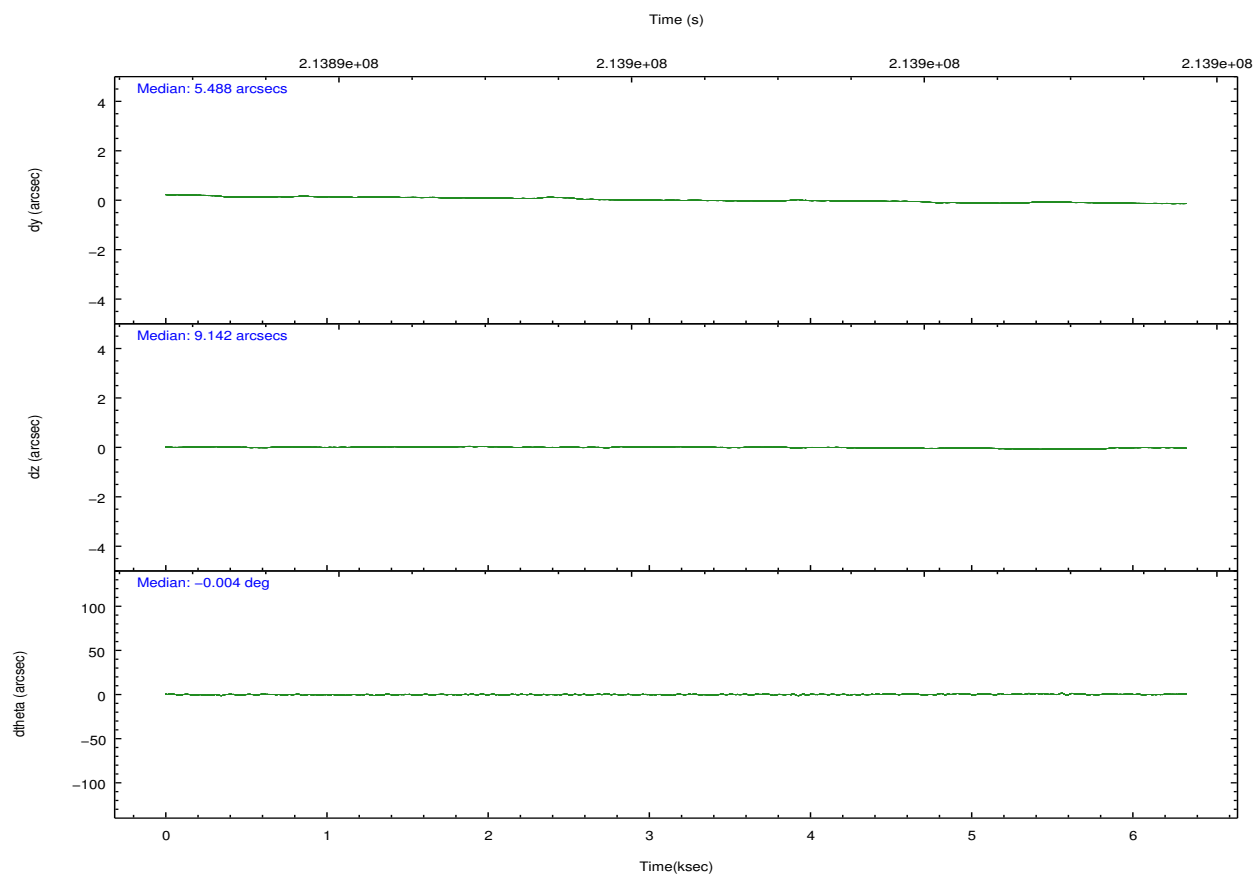
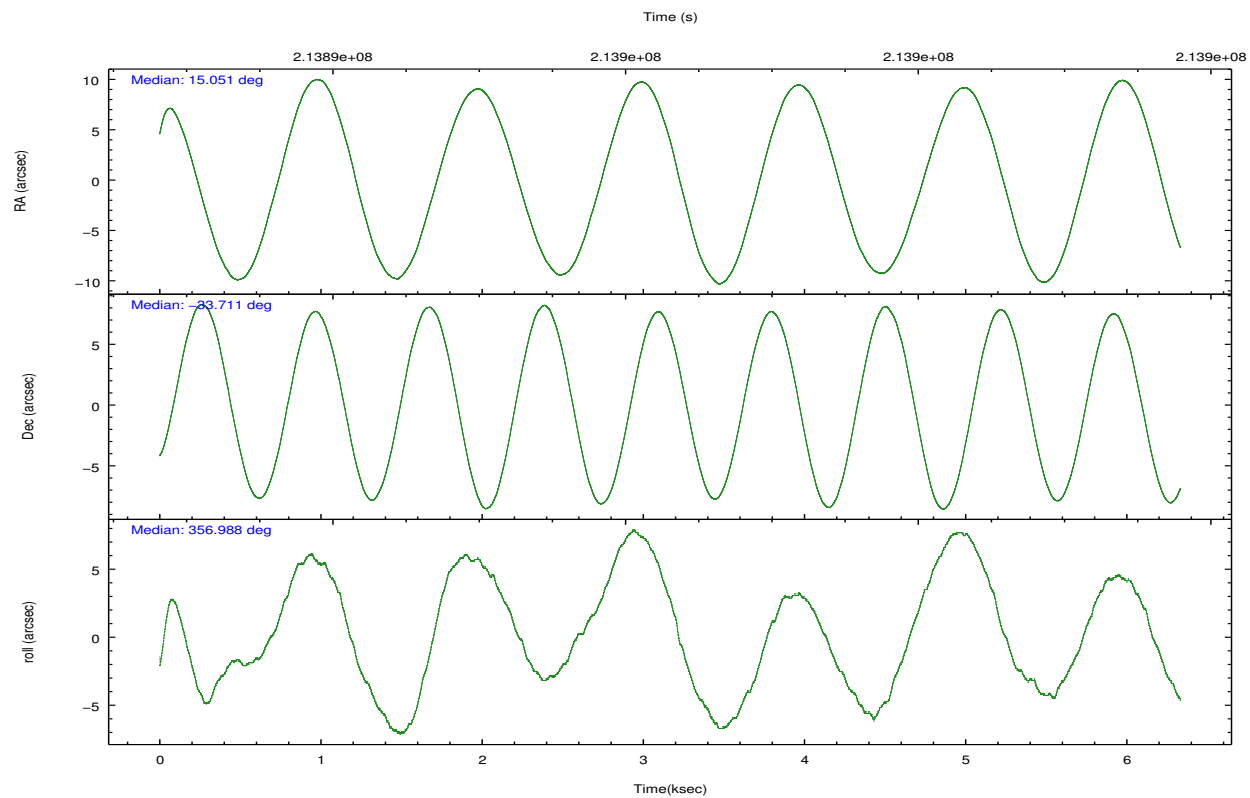
2.1.4 Events

	ccd 2	ccd 3	ccd 5	ccd 6	ccd 7	ccd 8		ccd 2	ccd 3	ccd 5	ccd 6	ccd 7	ccd 8
level 1 events	47777	43789	72923	46590	62854	58880	grade 0 events	2685	2461	4807	2218	2249	4168
rejected events	41974	38393	38917	40932	36959	46055		5%	5%	6%	4%	3%	7%
rejected %	87%	87%	53%	87%	58%	78%	grade 1 events	30	23	97	25	64	27
								0%	0%	0%	0%	0%	0%
							grade 2 events	1136	974	9857	1250	5094	2813
								2%	2%	13%	2%	8%	4%
							grade 3 events	528	509	1259	571	2317	1347
								1%	1%	1%	1%	3%	2%
							grade 4 events	539	491	1225	523	2348	1282
								1%	1%	1%	1%	3%	2%
							grade 5 events	1807	1979	5079	2188	6001	2731
								3%	4%	6%	4%	9%	4%
							grade 6 events	919	965	16873	1097	13898	3220
								1%	2%	23%	2%	22%	5%
							grade 7 events	40133	36387	33726	38718	30883	43292
								84%	83%	46%	83%	49%	73%

2.2 Compared Parameters

Parameter	Planned	Actual	Parameter	Planned	Actual
Instrument	ACIS	ACIS	Obspar format version number	7	7
Detector	ACIS-235678	ACIS-235678	Obspar file type	PREDICTED	ACTUAL
Grating	NONE	NONE	Obspar update status	NONE	UPDATED
Data mode	VFAINT	VFAINT	Number of optional ACIS chips dropped	0	0
Observation mode	POINTING	POINTING	On-chip summing requested	N	N
[deg] Pointing RA	15.021515	15.05054290425891	Subarray requested	NONE	NONE
[deg] Pointing Dec	-33.723765	-33.71104410687624	Alternating exposures requested	N	N
[deg] Pointing Roll	356.821604	356.9943389680524	[s] Primary exposure time	0.000000	3.2
[mm] SIM focus pos	-0.684267	-0.6828225247311905			
[mm] SIM defocus	0	0.001444936568705701			
[mm] SIM translation stage pos	-190.132523	-190.1400660498719			
[mm] SIM translation stage offset	0	0.00754346686406393			
[s] Observation start time (MET)	213893469.184000	213892431.60874			
Observation start date	2004-10-11T14:50:05	2004-10-11T14:33:51			
[s] Observation end time (MET)	213899469.184000	213900797.65911			
Observation end date	2004-10-11T16:30:05	2004-10-11T16:53:17			
Read mode	TIMED	TIMED			

2.3 Aspect

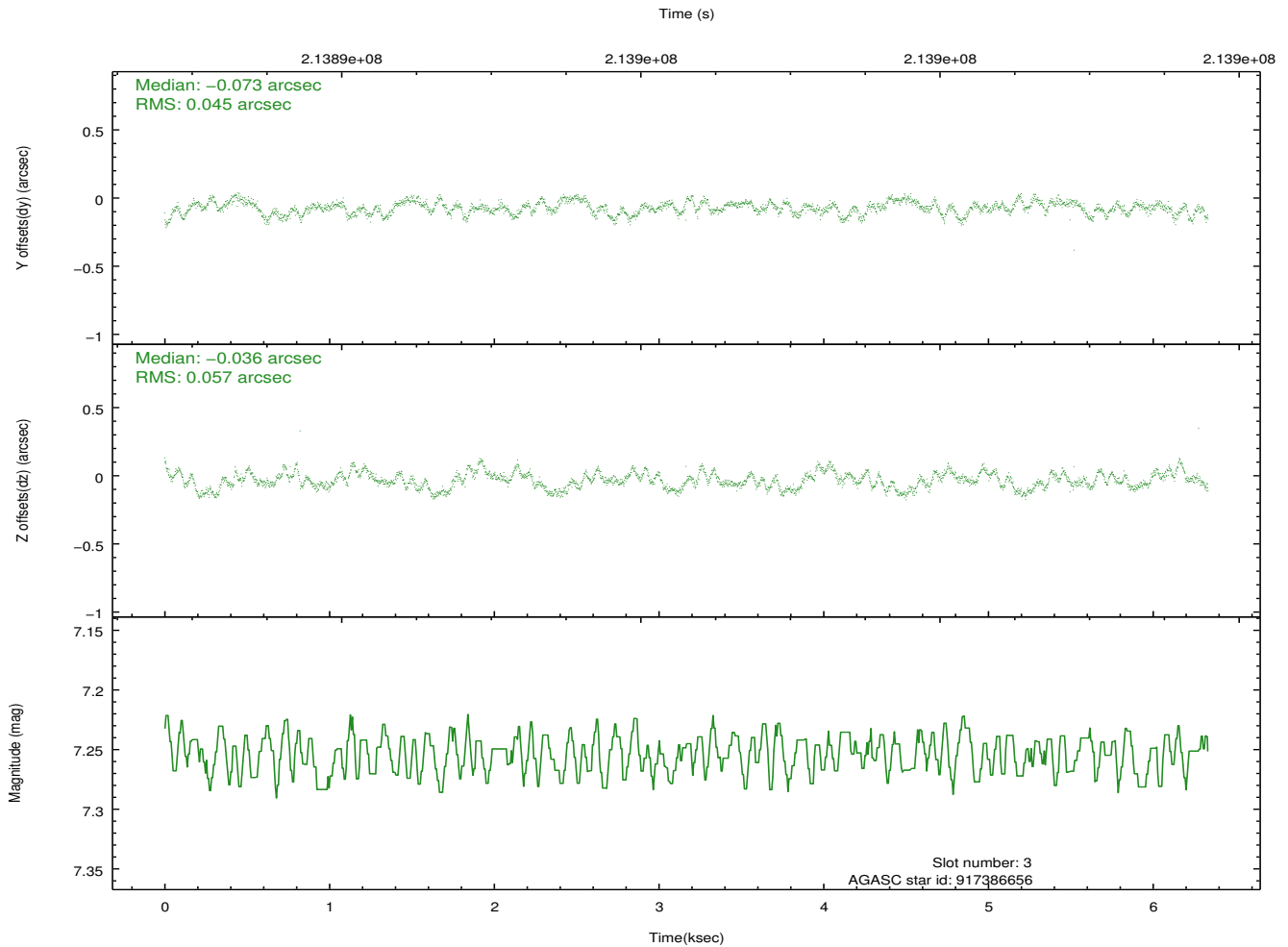
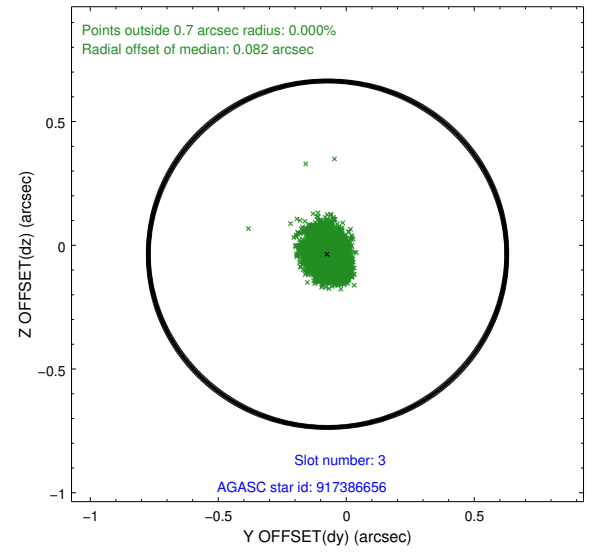
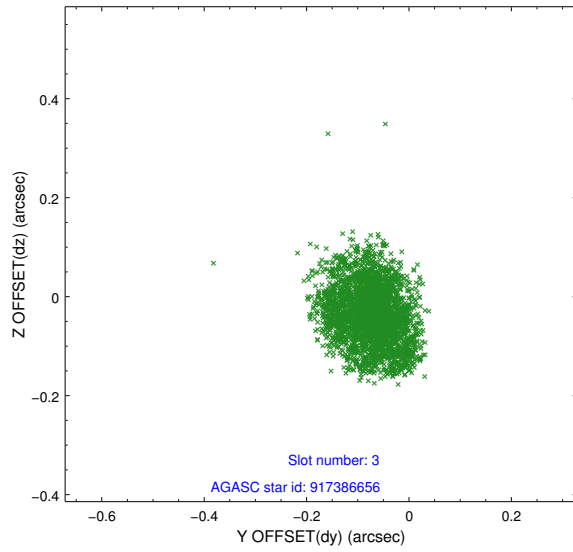


Slot Statistics

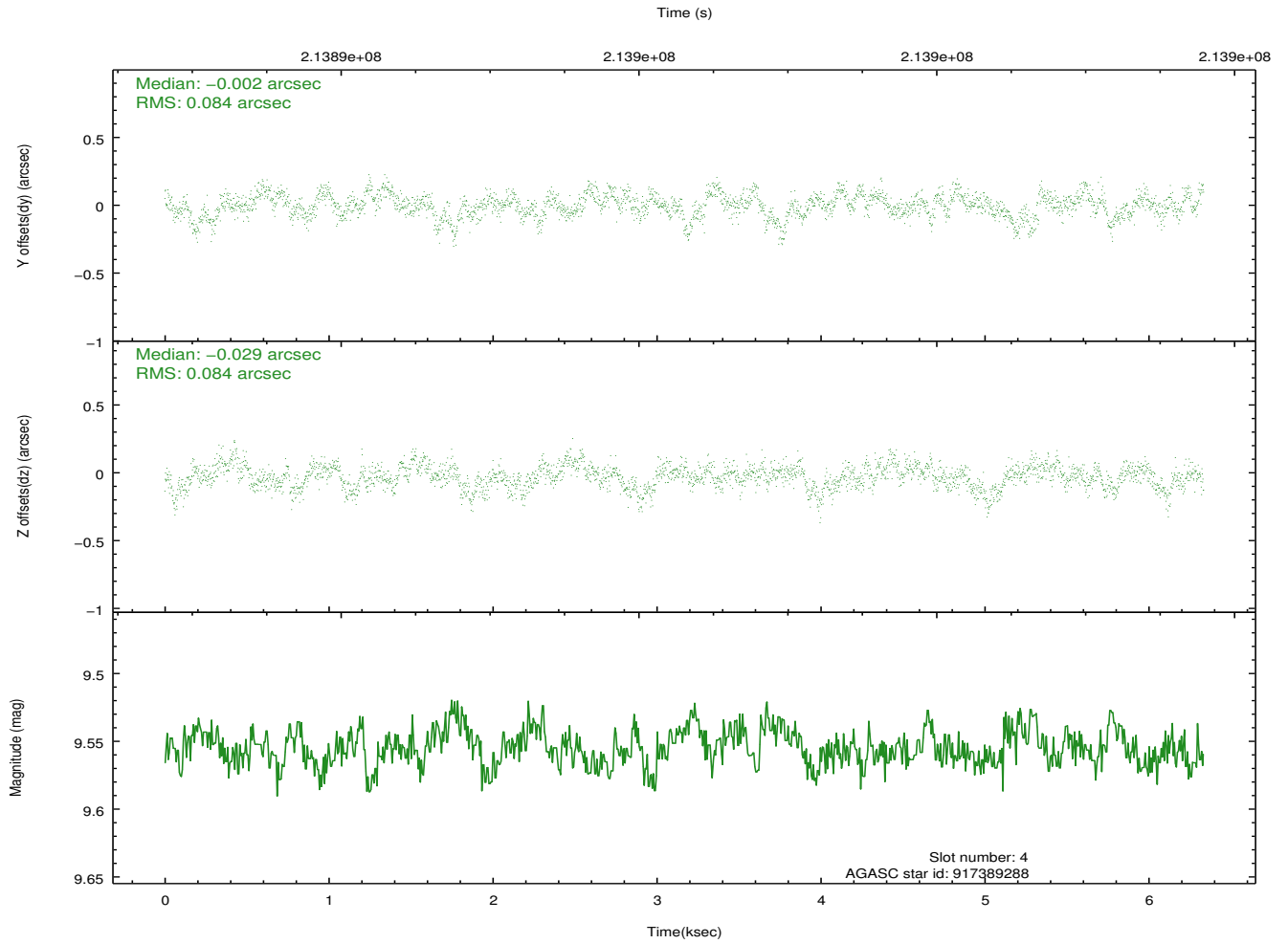
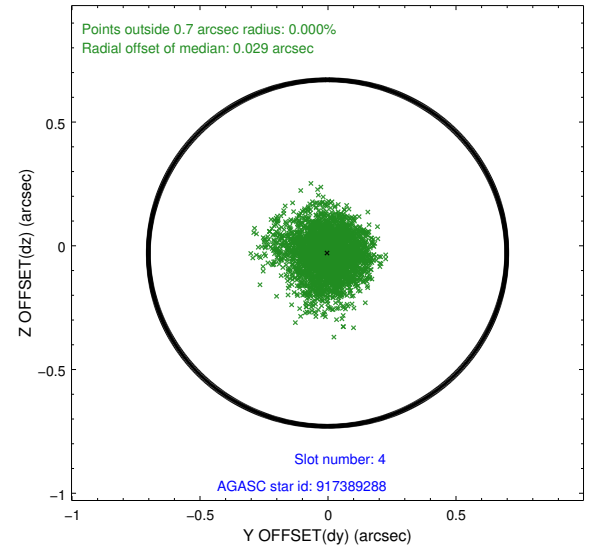
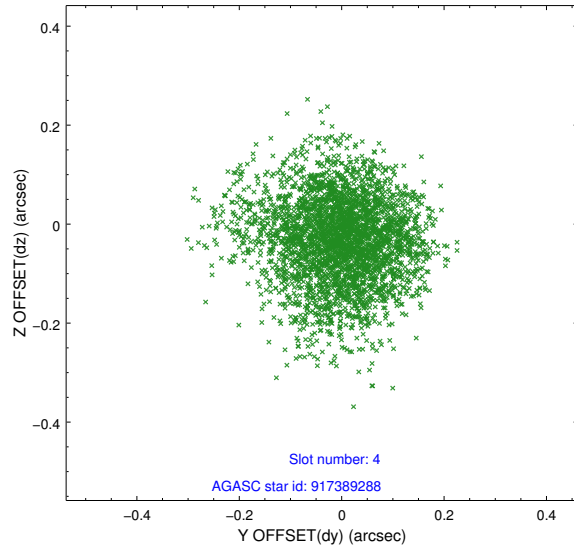
slot	status	id	mag	n_pts	med_dy	med_dz	dr1	dr2	ra	dec	mean_y	mean_z
0	FID	ACIS-S-1	7.18	1545	0.019	0.004	0.007	0.011	0.000000	0.000000	937.80	-1726.00
1	FID	ACIS-S-5	7.23	1545	-0.089	0.010	0.006	0.011	0.000000	0.000000	-1810.74	170.66
2	FID	ACIS-S-6	7.36	1545	0.048	-0.002	0.007	0.012	0.000000	0.000000	402.44	815.61
3	GUIDE	917386656	7.25	3091	-0.073	-0.036	0.079	0.121	15.342124	-33.359890	889.85	1359.93
4	GUIDE	917389288	9.55	3089	-0.002	-0.029	0.127	0.205	15.394706	-33.185862	1015.48	1994.12
5	GUIDE	917390768	9.87	3088	0.005	-0.019	0.156	0.245	14.870561	-33.104152	-578.10	2202.07
6	GUIDE	917642024	8.90	3090	0.054	-0.003	0.097	0.153	15.645887	-34.369984	1982.47	-2224.66
7	GUIDE	917650528	8.71	3086	0.020	0.083	0.081	0.128	14.274554	-33.869842	-2198.93	-657.95

2.4 Star Slots

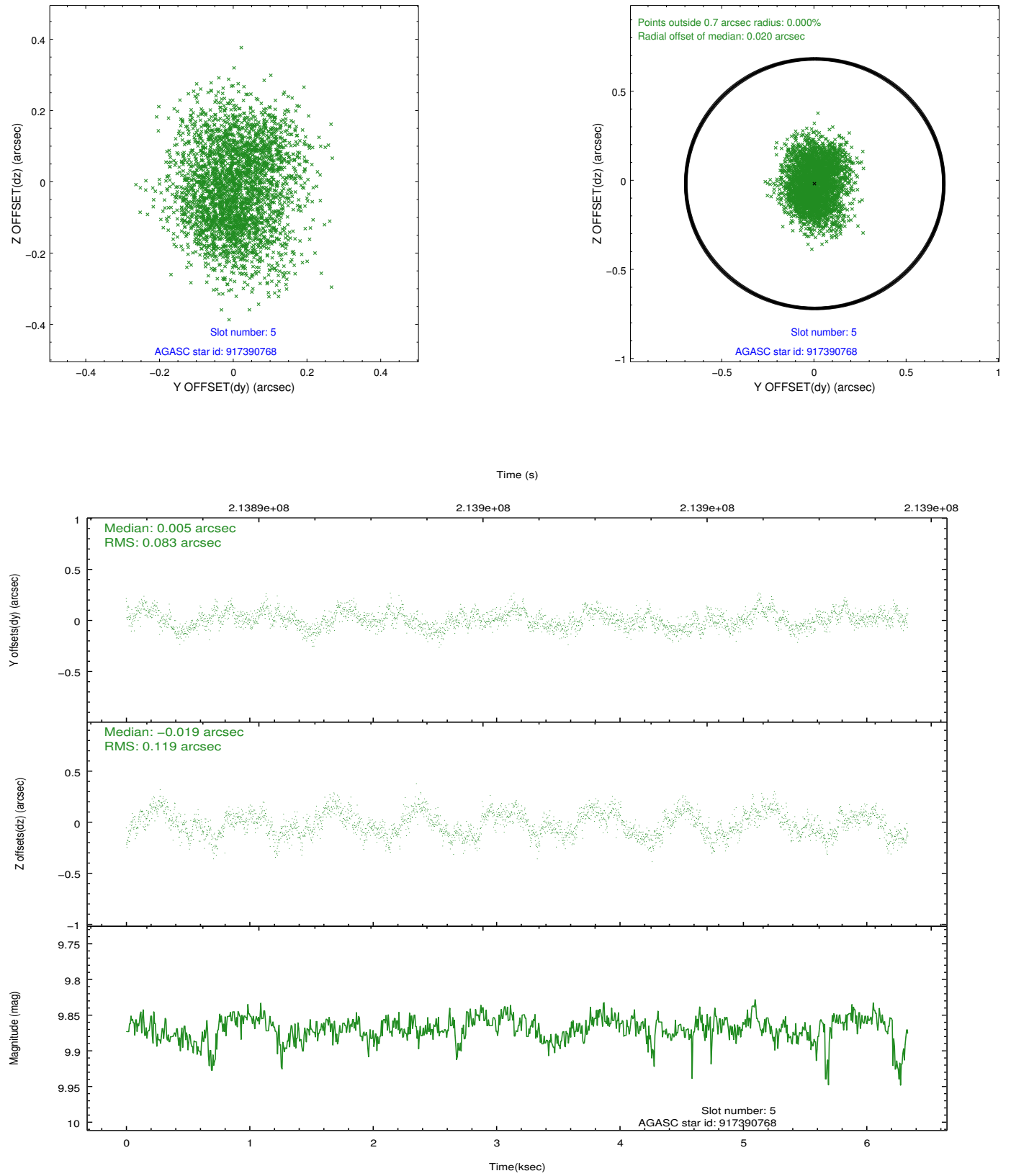
2.4.1 Slot 3



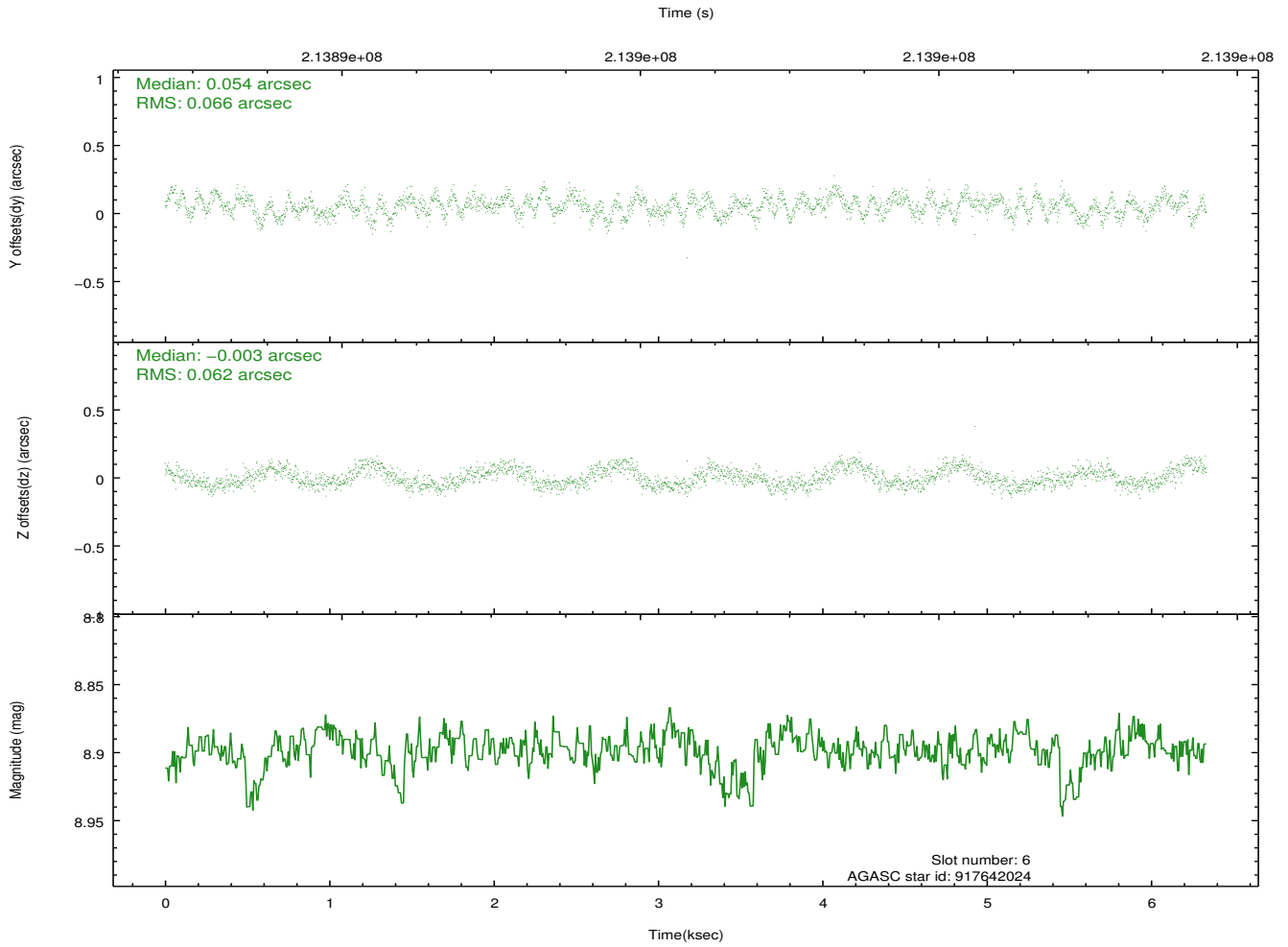
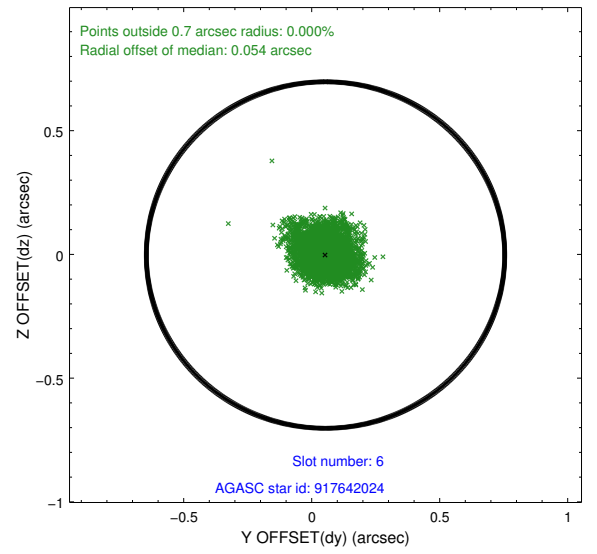
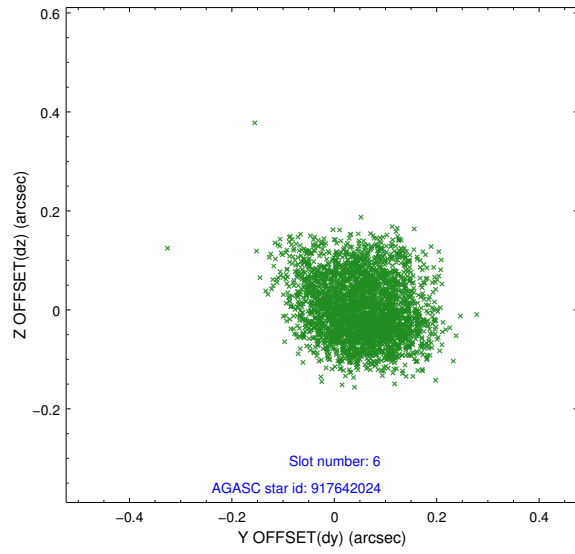
2.4.2 Slot 4



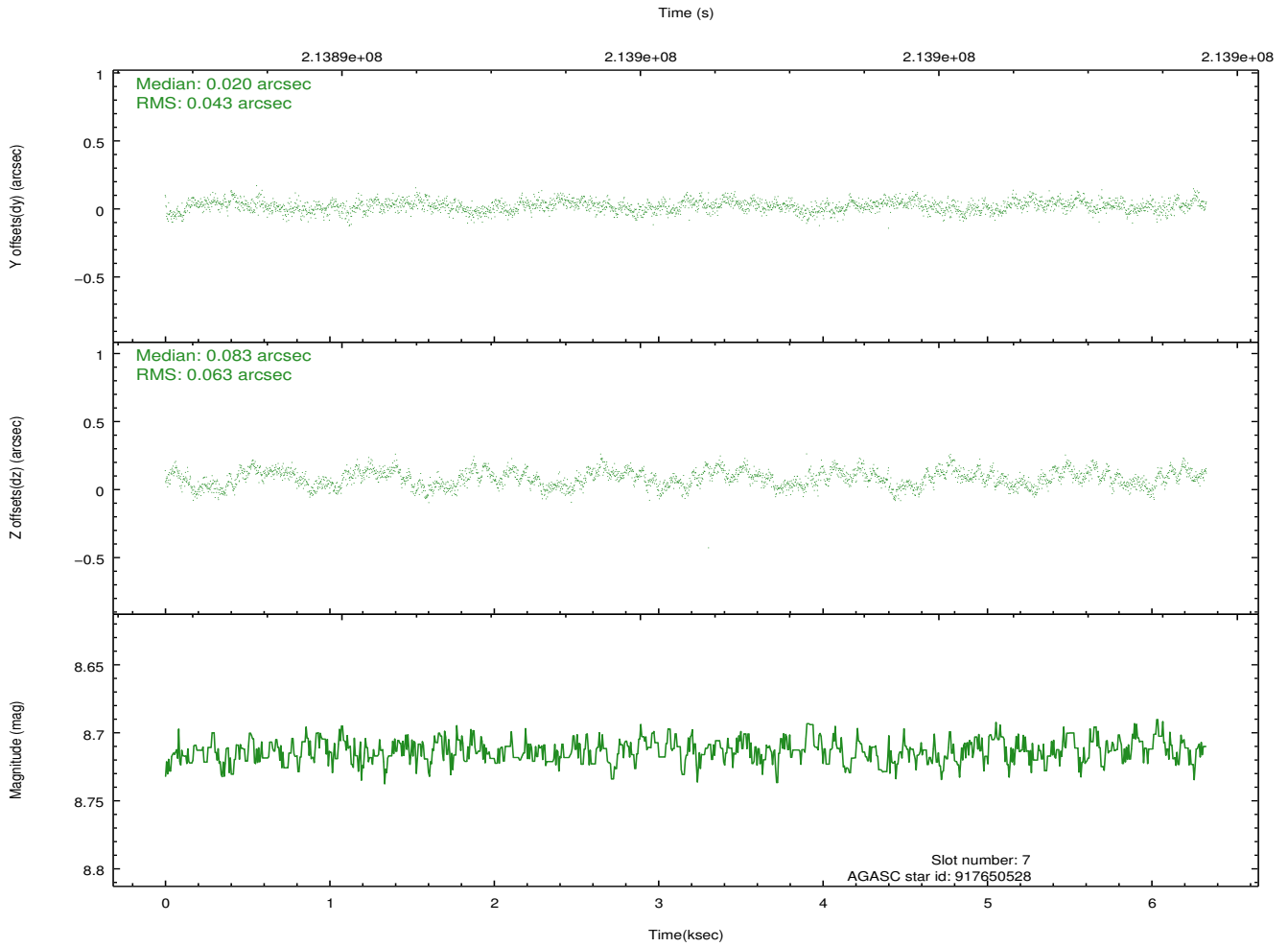
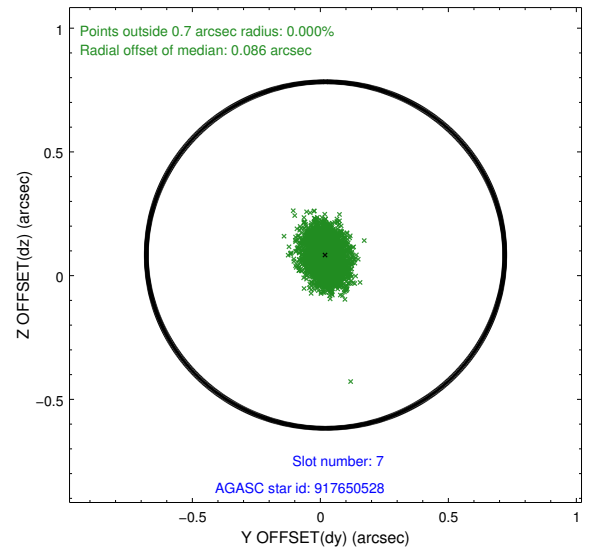
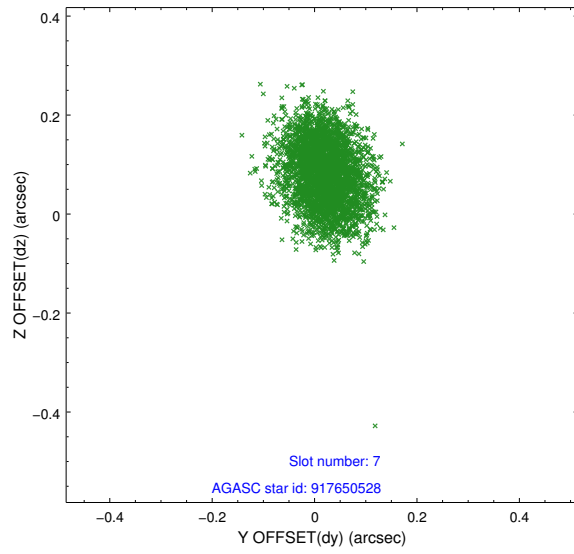
2.4.3 Slot 5



2.4.4 Slot 6

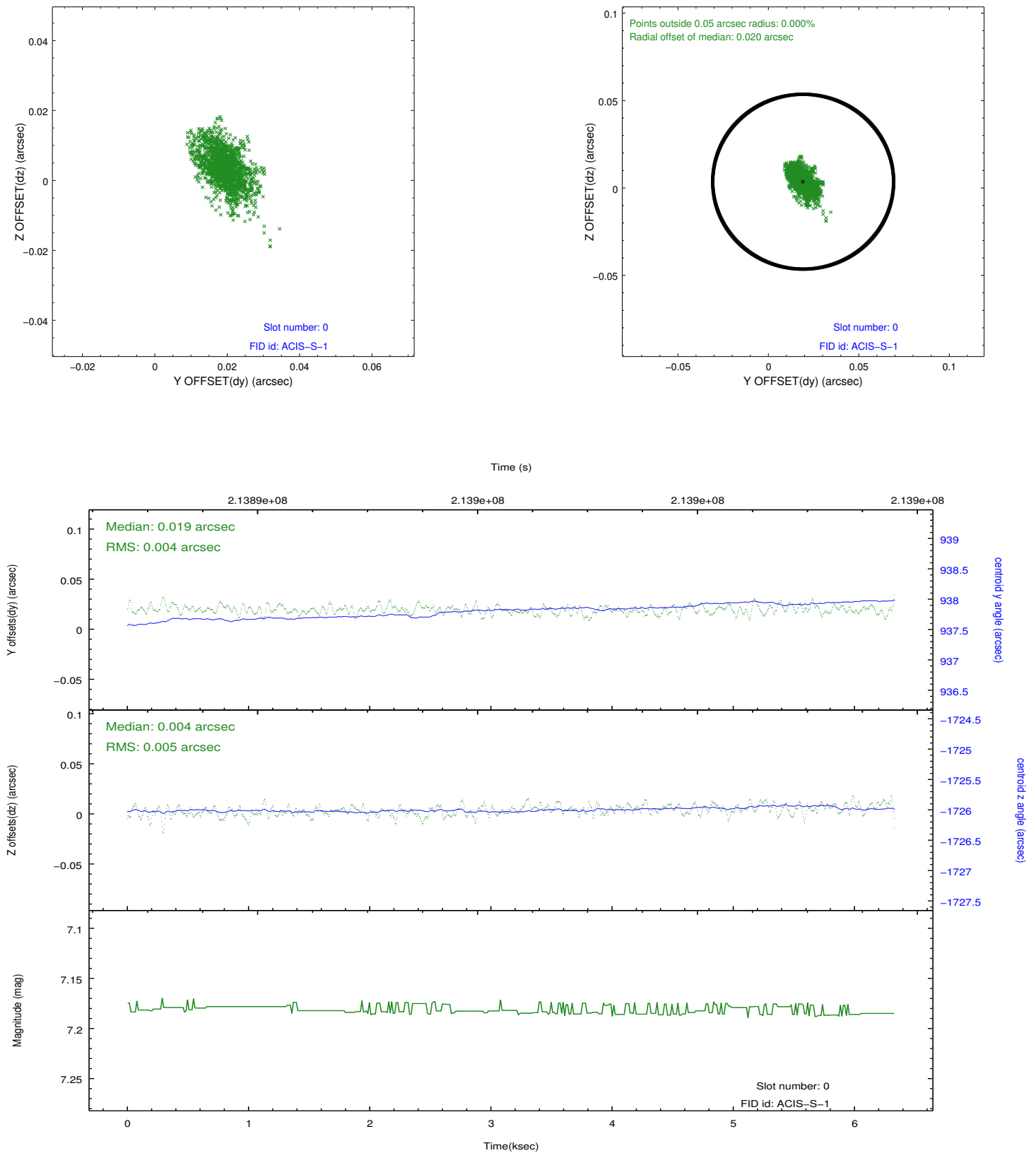


2.4.5 Slot 7

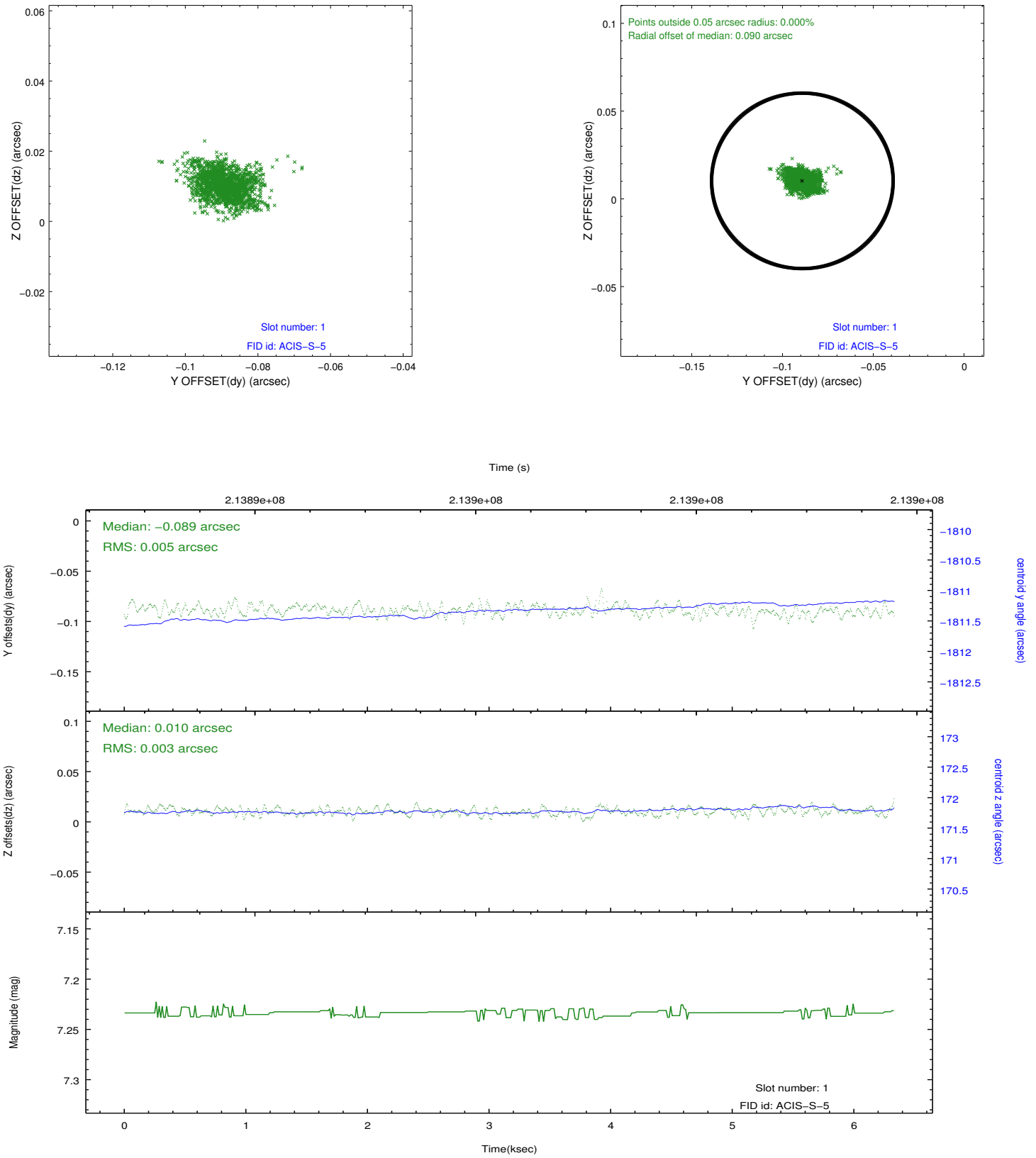


2.5 FID Slots

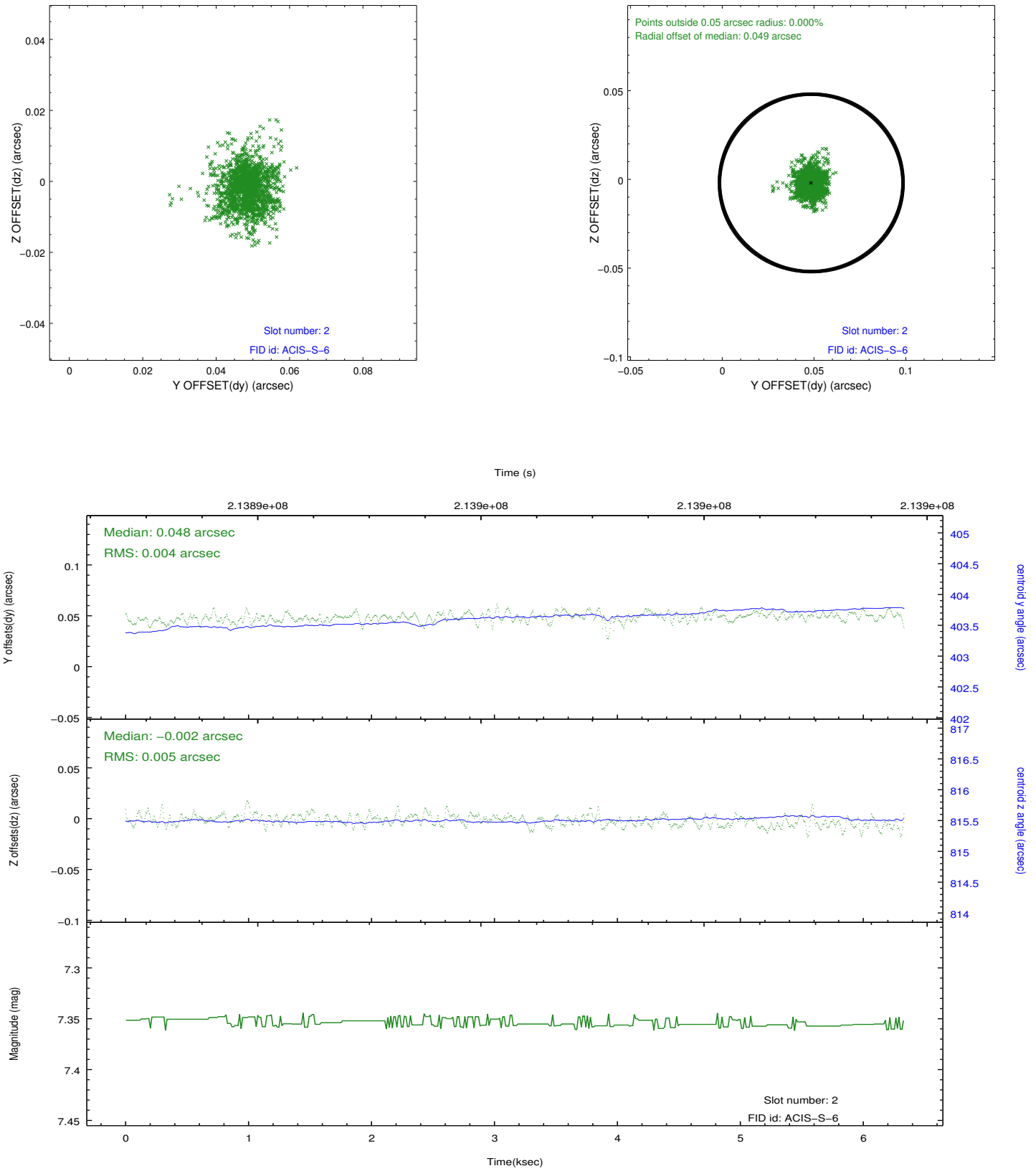
2.5.1 Slot 0



2.5.2 Slot 1



2.5.3 Slot 2



A Summary

A.1 Status

V&V Scientist	Beth Sundheim
V&V Date (YYYY-MM-DD)	2012.12.21
V&V Edition	1
V&V Disposition and Status	OK
V&V Charge Time	5.955

A.2 Comments

Joint proposal with NOAO.