

V&V Reference Report

L2 ASCDS Version : 7.6.7.1

Observation 4708 - L2 Version 001
Chandra X-Ray Center

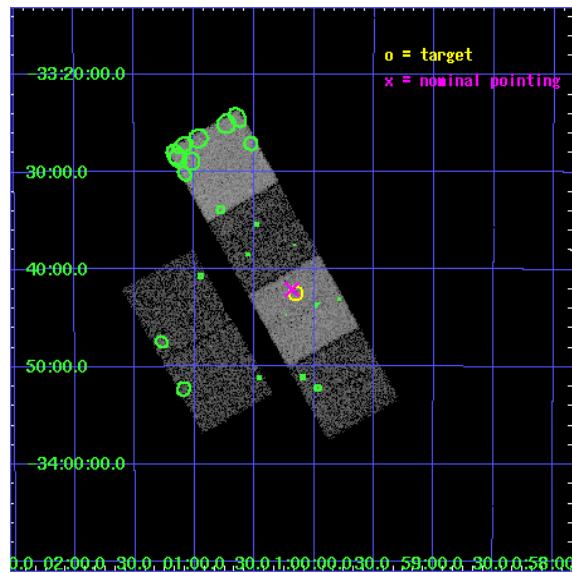
L2 Processing Date : Apr 19 2006

Contents

1	Front	2
2	OBI	3
2.1	OBI	3
2.1.1	Images	3
2.1.2	Bias	3
2.1.3	Parameters	4
2.1.4	Events	4
2.2	Compared Parameters	5
2.3	Aspect	6
2.4	Star Slots	9
2.4.1	Slot 3	9
2.4.2	Slot 4	10
2.4.3	Slot 5	11
2.4.4	Slot 6	12
2.4.5	Slot 7	13
2.5	FID Slots	14
2.5.1	Slot 0	14
2.5.2	Slot 1	15
2.5.3	Slot 2	16
3	Point Sources	17
A	Summary	18
A.1	Status	18
A.2	Comments	18

1 Front

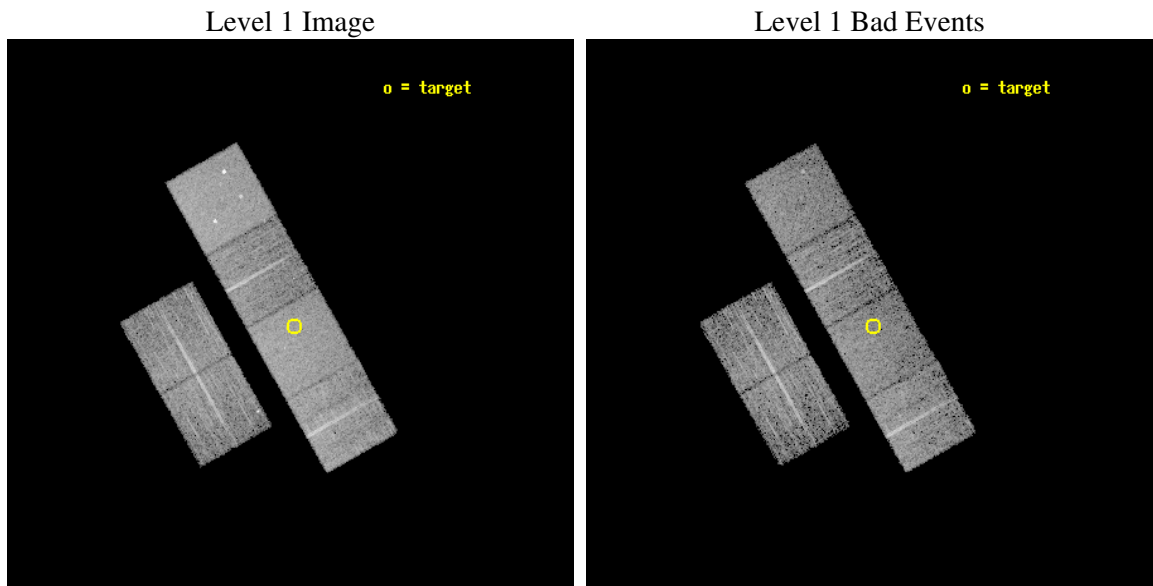
seq_num	600363
obs_id	4708
title	Using the Sculptor Dwarf Spheroidal Galaxy to Constrain X-ray Binary Production in Population II
observer	Dr. Thomas Maccarone
object	SCULPTOR DWARF SPHEROIDAL
dtcycle	0
cycle	P
ra_targ	15.039167
dec_targ	-33.708889
ra_nom	15.046446049305
dec_nom	-33.70148212242
roll_nom	60.544996969845
revision	2
ontime	5955.1999778152
livetime	5879.7916499051
ontime2	5951.9590075314
ontime3	5955.1999778152
ontime5	5955.1999778152
ontime6	5955.1999778152
ontime7	5955.1999778152
ontime8	5955.1999778152
l2events	69075



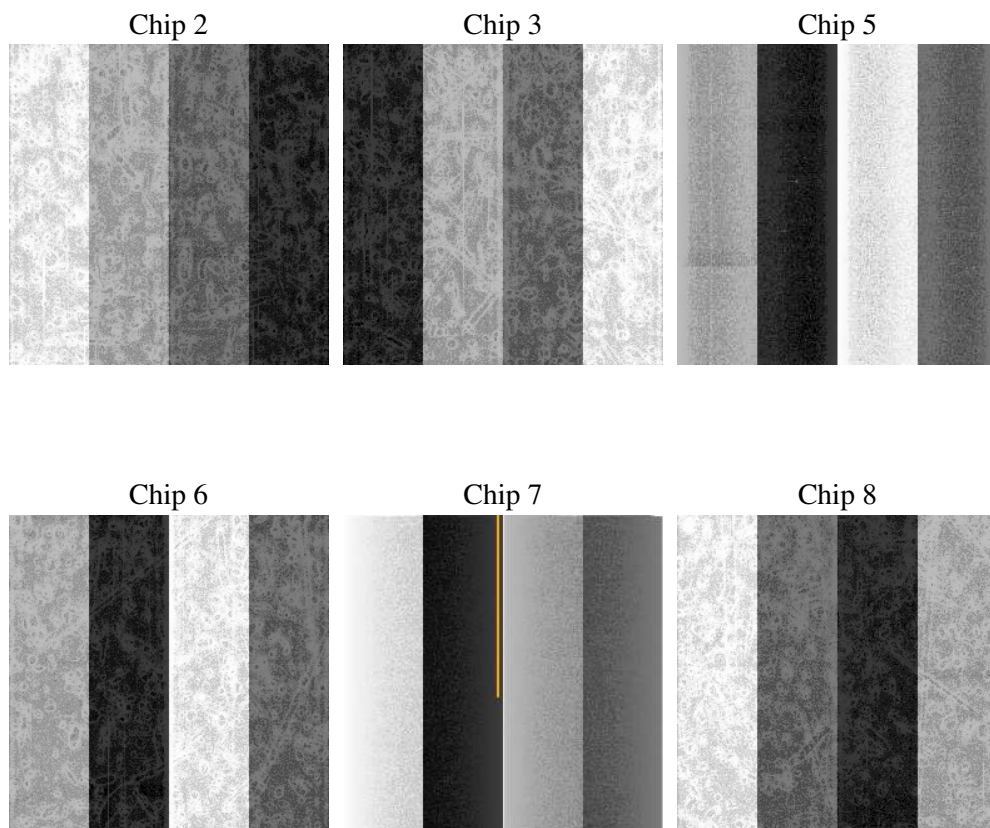
2 OBI

2.1 OBI

2.1.1 Images



2.1.2 Bias



2.1.3 Parameters

obi_num	0
ascdsver	7.6.7.1
caldbver	3.2.1
date	2006-04-19T05:06:09
revision	2

sched_exp_time	6000.000000
ontime	5960.2074356675
ontime2	5956.9664455056
ontime3	5963.4484358728
ontime5	5960.2074157894
ontime6	5963.4484358728
ontime7	5960.2074356675
ontime8	5963.4484358728
l1events	317351

2.1.4 Events

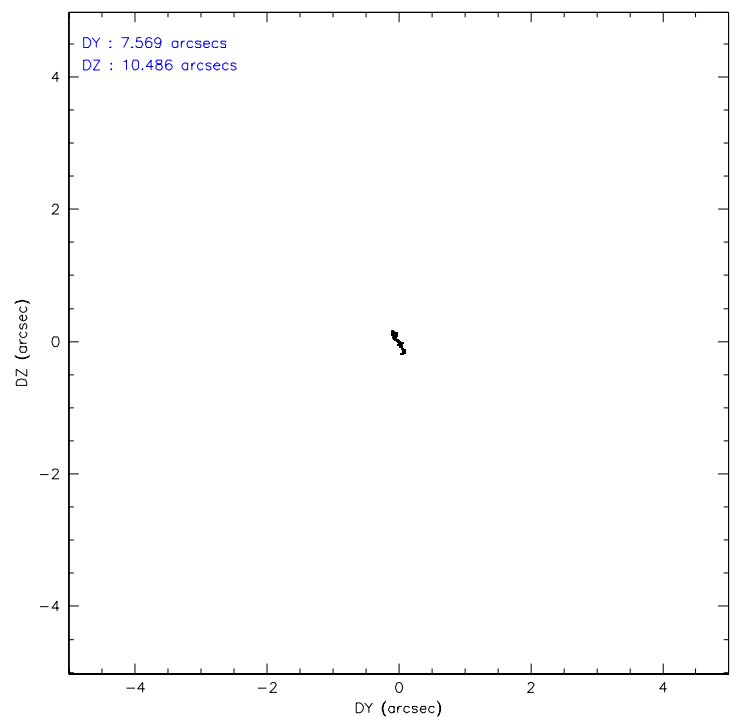
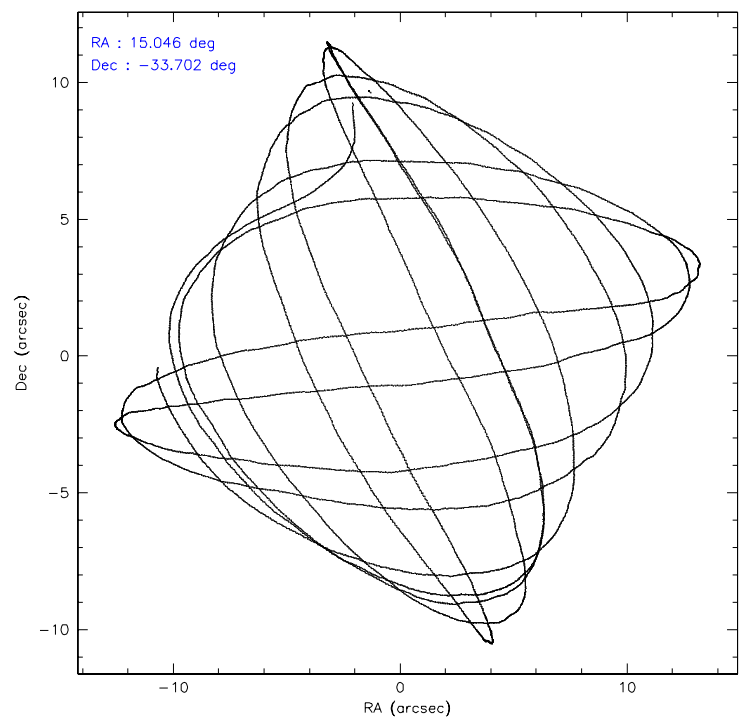
	ccd 2	ccd 3	ccd 5	ccd 6	ccd 7	ccd 8
level 1 events	45630	43000	67015	43773	59595	58338
rejected events	40367	37579	36561	38410	37071	46255
rejected %	88%	87%	54%	87%	62%	79%

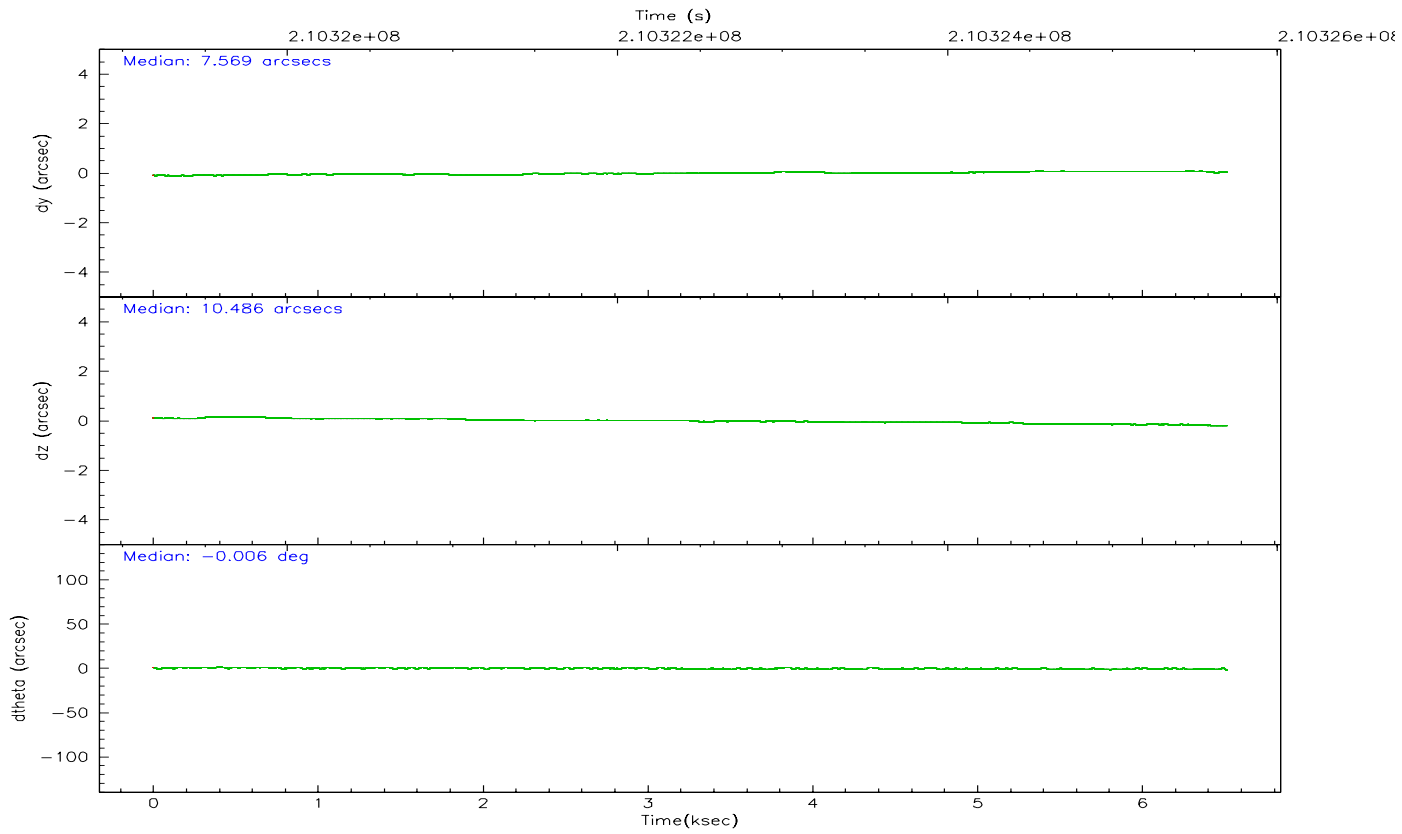
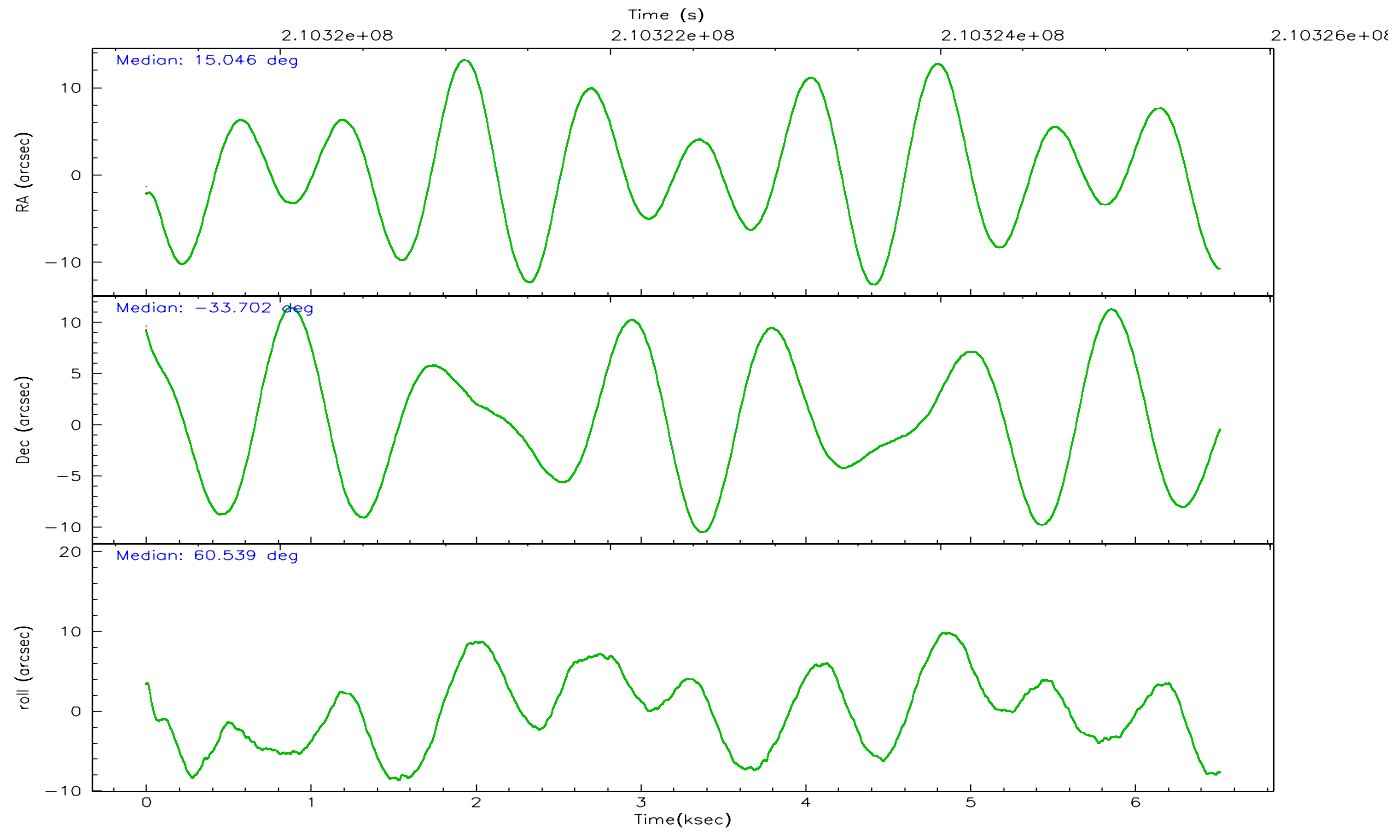
	ccd 2	ccd 3	ccd 5	ccd 6	ccd 7	ccd 8
grade 0 events	2384	2493	2820	2229	1291	3831
	5%	5%	4%	5%	2%	6%
grade 1 events	21	26	116	20	40	37
	0%	0%	0%	0%	0%	0%
grade 2 events	1091	1001	9317	1100	5590	2705
	2%	2%	13%	2%	9%	4%
grade 3 events	450	536	661	497	1112	1255
	0%	1%	0%	1%	1%	2%
grade 4 events	514	486	594	509	1093	1201
	1%	1%	0%	1%	1%	2%
grade 5 events	1793	1963	3190	2108	3963	2734
	3%	4%	4%	4%	6%	4%
grade 6 events	831	908	17092	1038	13472	3098
	1%	2%	25%	2%	22%	5%
grade 7 events	38546	35587	33225	36272	33034	43477
	84%	82%	49%	82%	55%	74%

2.2 Compared Parameters

Parameter	Planned	Actual	Parameter	Planned	Actual
Instrument	ACIS	ACIS	Obspar format version number	6	6
Detector	ACIS-235678	ACIS-235678	Obspar file type	PREDICTED	ACTUAL
Grating	NONE	NONE	Obspar update status	NONE	UPDATED
Data mode	VFAINT	VFAINT	On-chip summing requested	N	N
Observation mode	POINTING	POINTING	Subarray requested	NONE	NONE
Pointing RA	15.047324	15.04644604930487	Alternating exposures requested	N	N
Pointing Dec	-33.728659	-33.70148212241984	Primary exposure time	0.000000	3.2
Pointing Roll	60.388839	60.54499696984519			
SIM focus pos (mm)	-0.684267	-0.6828225247311905			
SIM defocus (mm)	0	0.001444936568705701			
SIM translation stage pos (mm)	-190.132523	-190.1400660498719			
SIM translation stage offset (mm)	0	0.00754346686406393			
Observation start time	210319699.184000	210318426.59914			
Observation start date	2004-08-31T06:07:15	2004-08-31T05:47:06			
Observation end time	210325699.184000	210326785.98701			
Observation end date	2004-08-31T07:47:15	2004-08-31T08:06:25			
Read mode	TIMED	TIMED			

2.3 Aspect



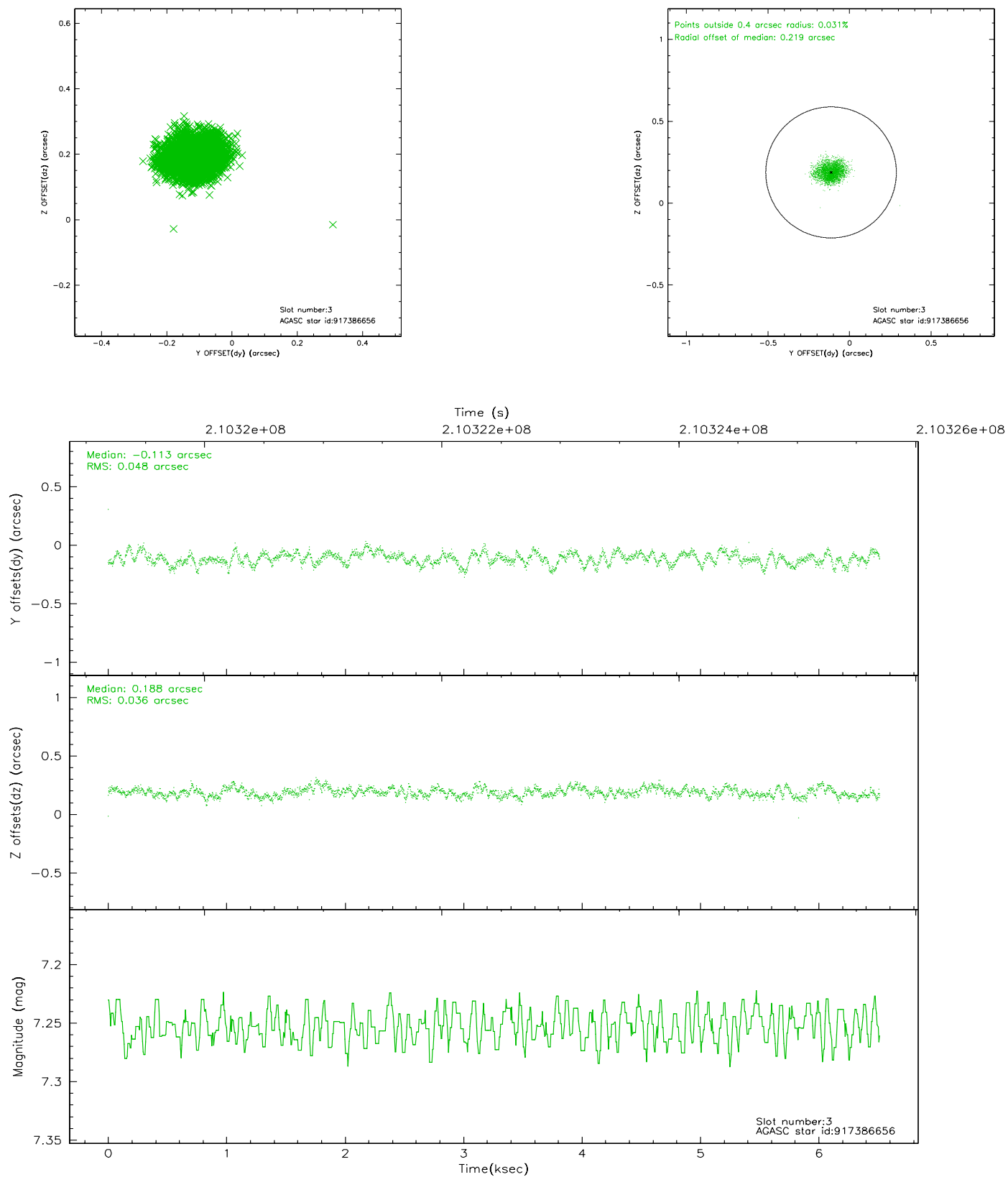


Slot Statistics

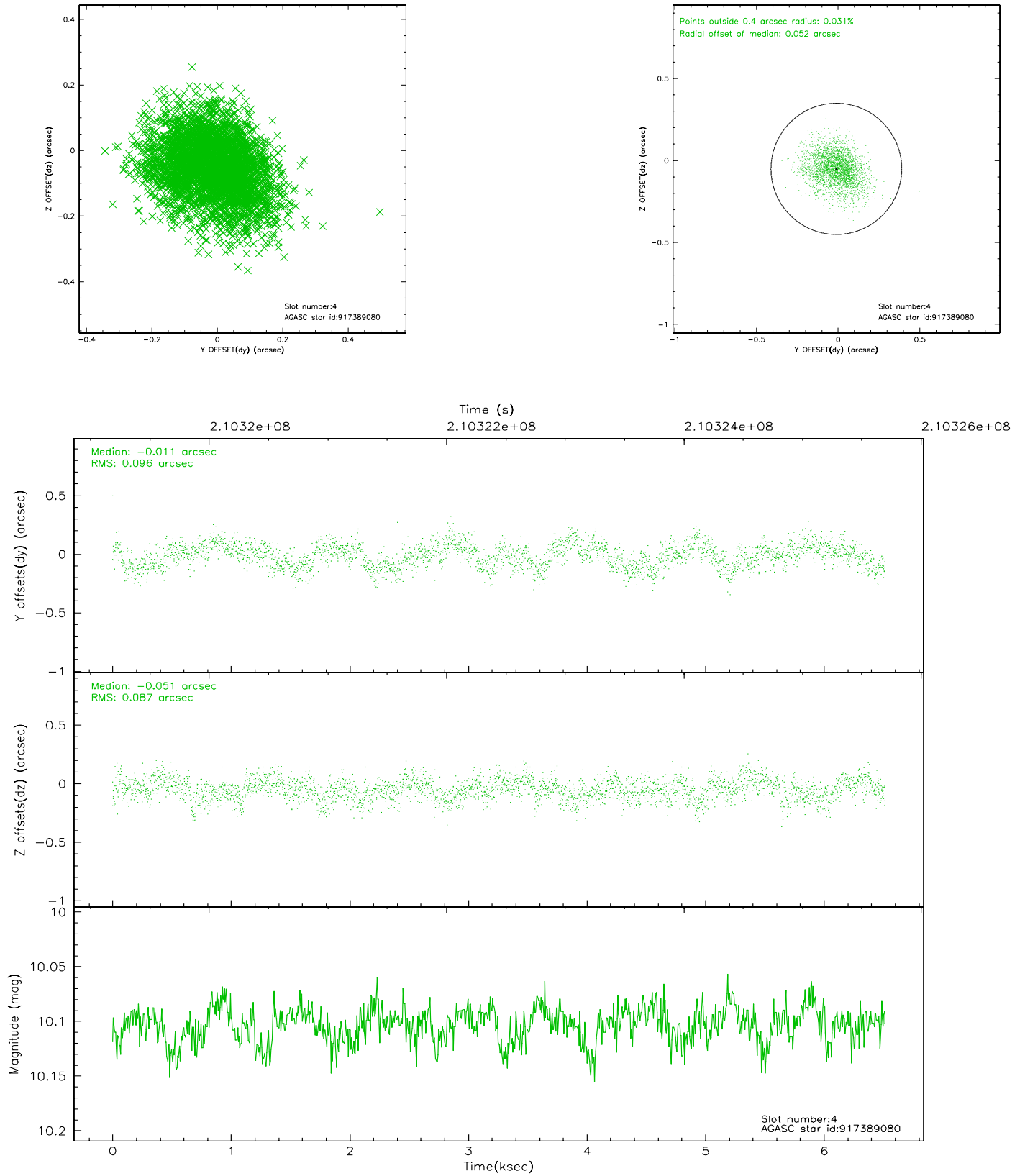
slot	status	id	mag	n_pts	med_dy	med_dz	dr1	dr2	ra	dec	mean_y	mean_z
0	FID	ACIS-S-1	7.18	1590	0.022	-0.041	0.007	0.012	0.000000	0.000000	935.74	-1727.40
1	FID	ACIS-S-5	7.23	1590	-0.043	0.016	0.006	0.011	0.000000	0.000000	-1812.83	169.28
2	FID	ACIS-S-6	7.35	1590	-0.000	0.037	0.008	0.013	0.000000	0.000000	400.29	814.28
3	GUIDE	917386656	7.25	3180	-0.113	0.188	0.064	0.103	15.342124	-33.359890	1591.52	-115.05
4	GUIDE	917389080	10.10	3175	-0.011	-0.051	0.138	0.223	15.722484	-33.662555	1201.88	-1644.54
5	GUIDE	917389288	9.57	3178	-0.104	0.009	0.107	0.174	15.394706	-33.185862	2215.12	54.34
6	GUIDE	917650528	8.72	3180	0.118	-0.019	0.070	0.114	14.274554	-33.869842	-1589.67	1752.57
7	GUIDE	917651768	9.62	3177	0.110	-0.126	0.114	0.187	14.115744	-33.817552	-1666.07	2258.10

2.4 Star Slots

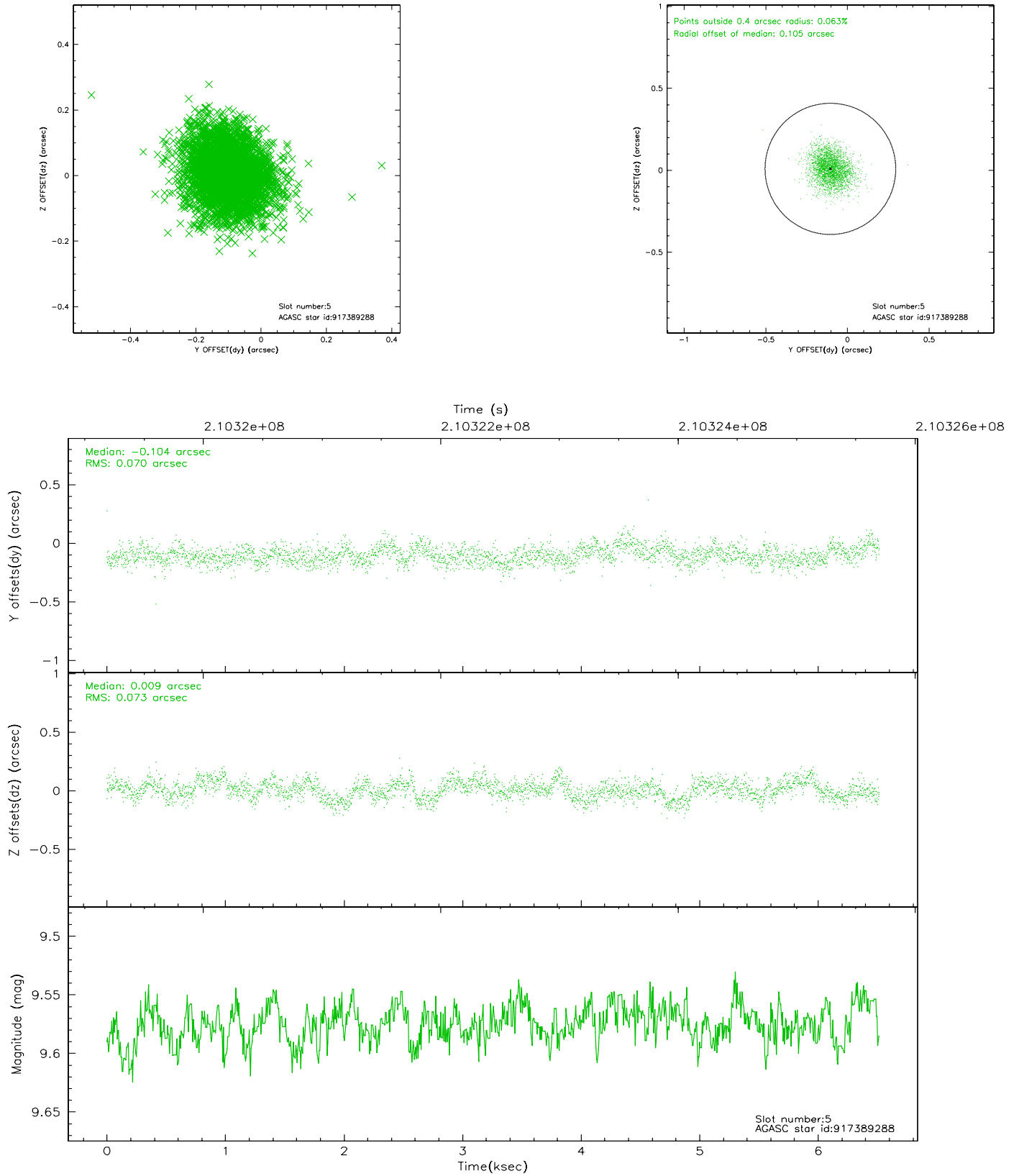
2.4.1 Slot 3



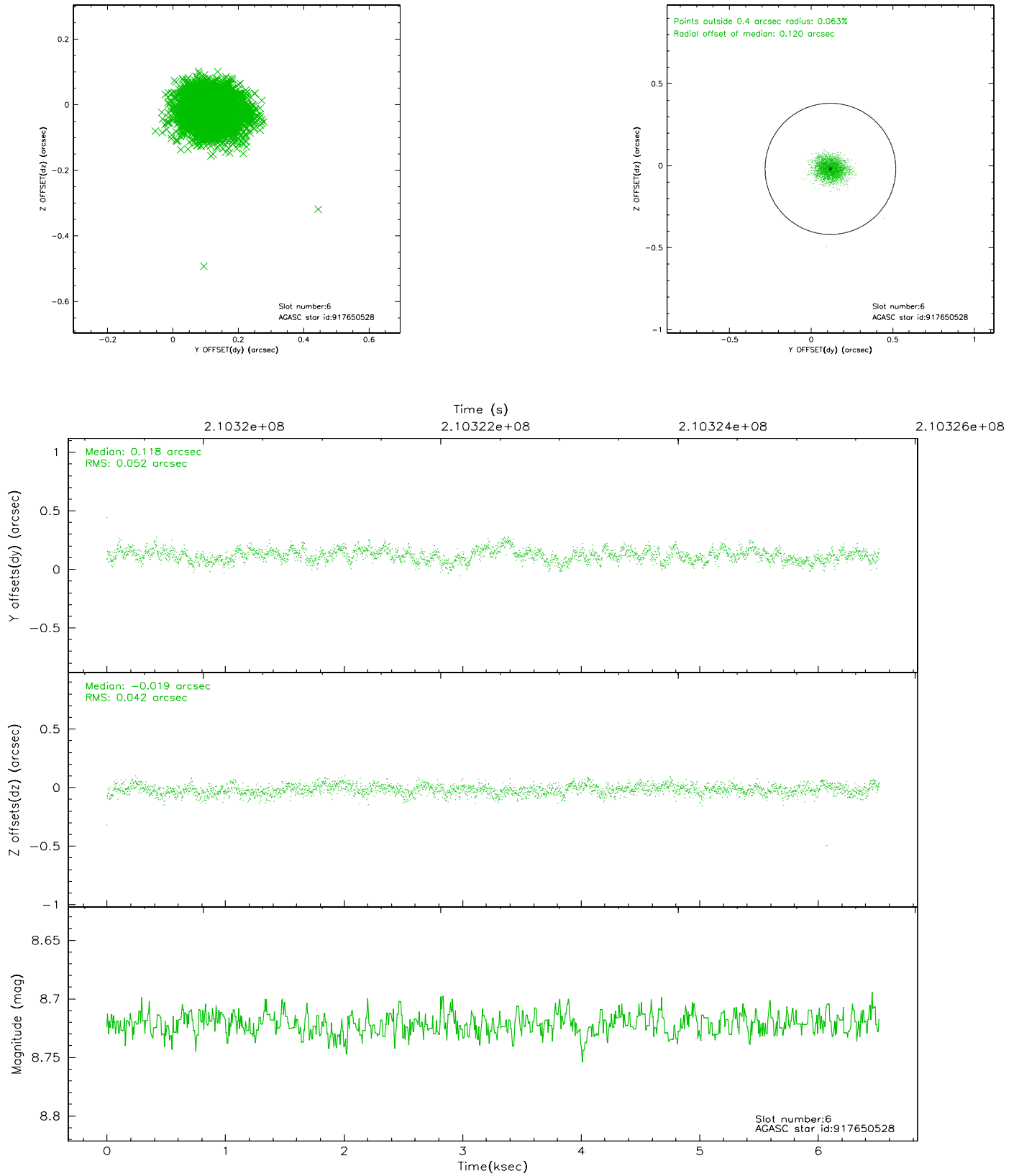
2.4.2 Slot 4



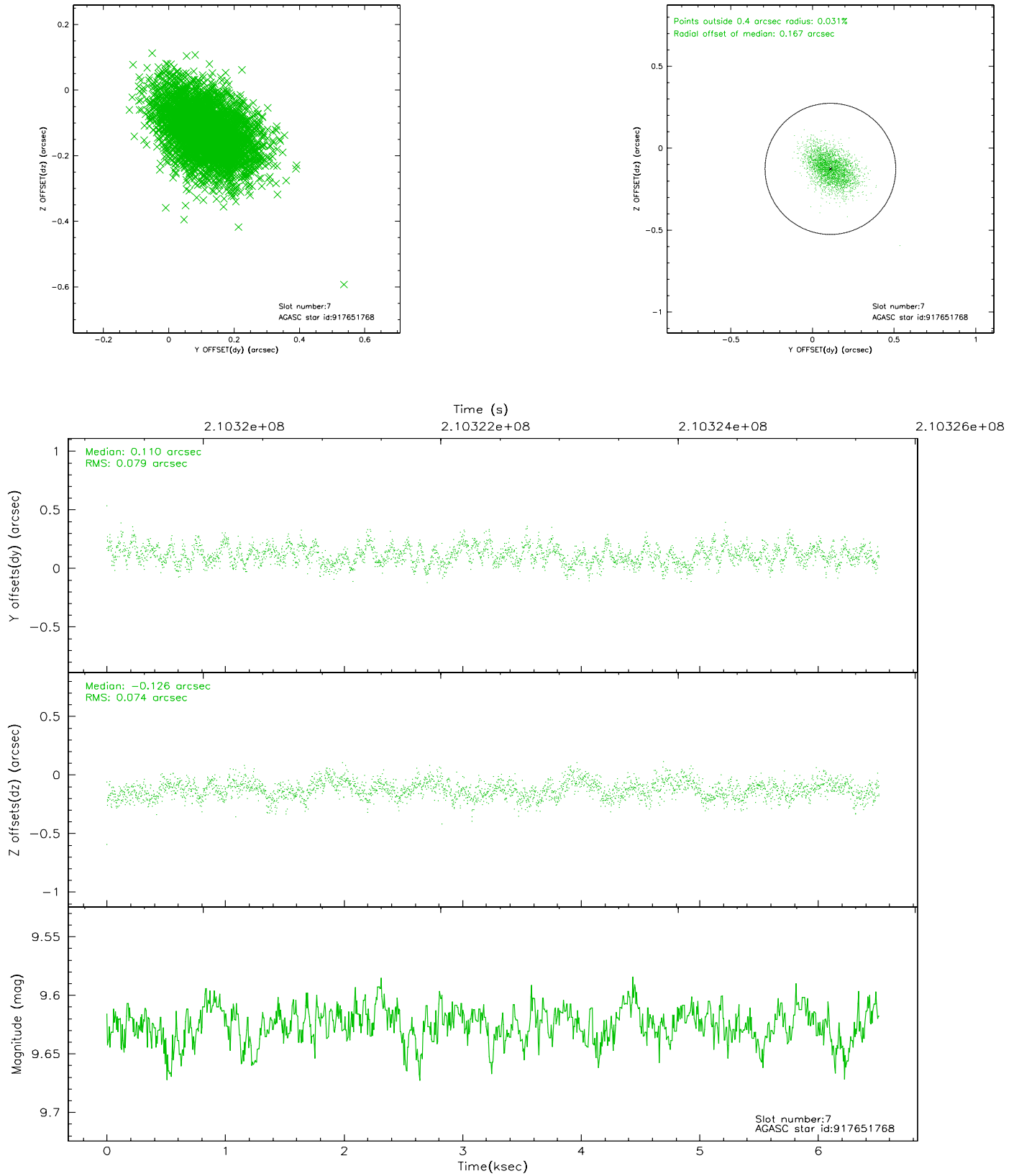
2.4.3 Slot 5



2.4.4 Slot 6

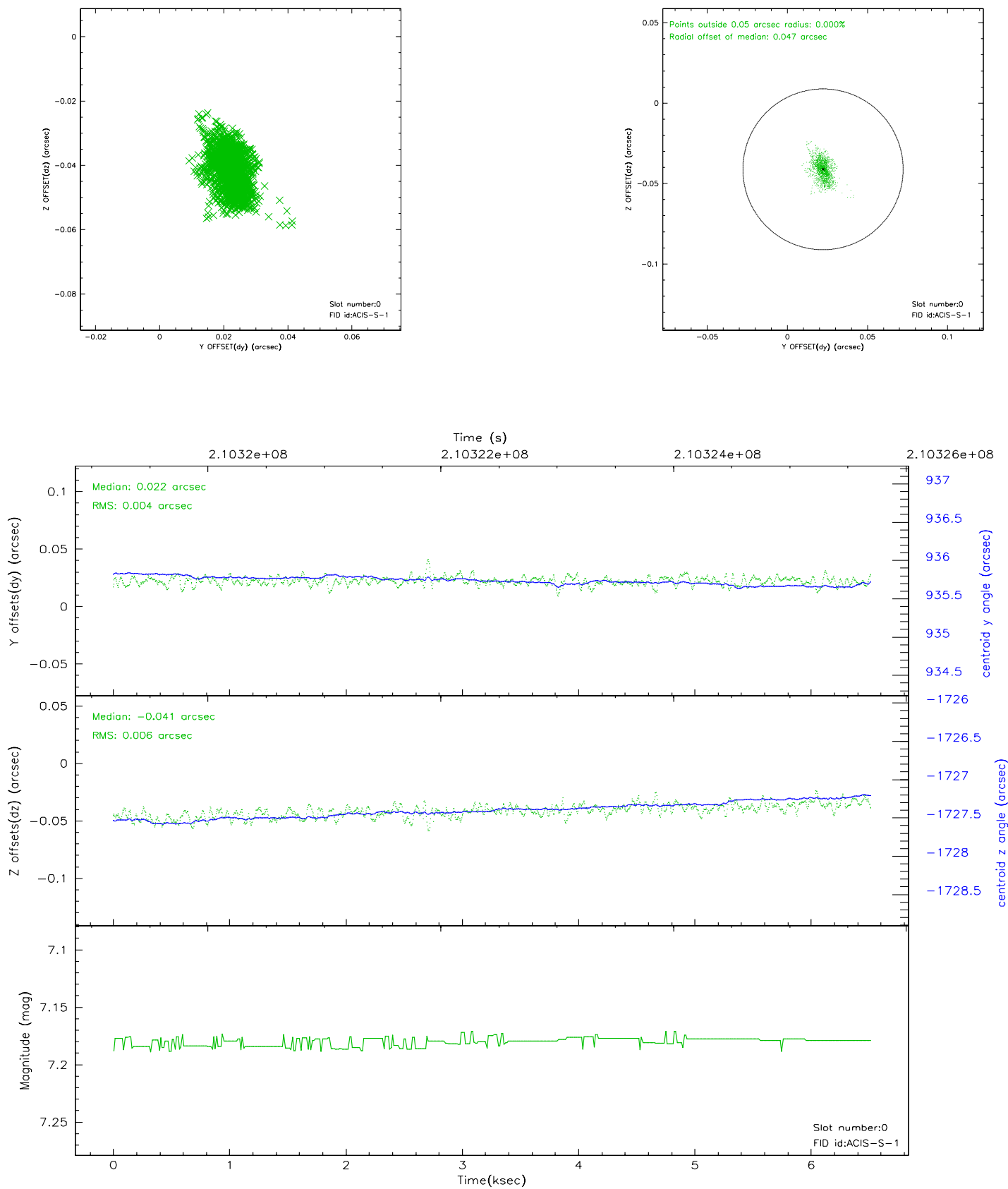


2.4.5 Slot 7

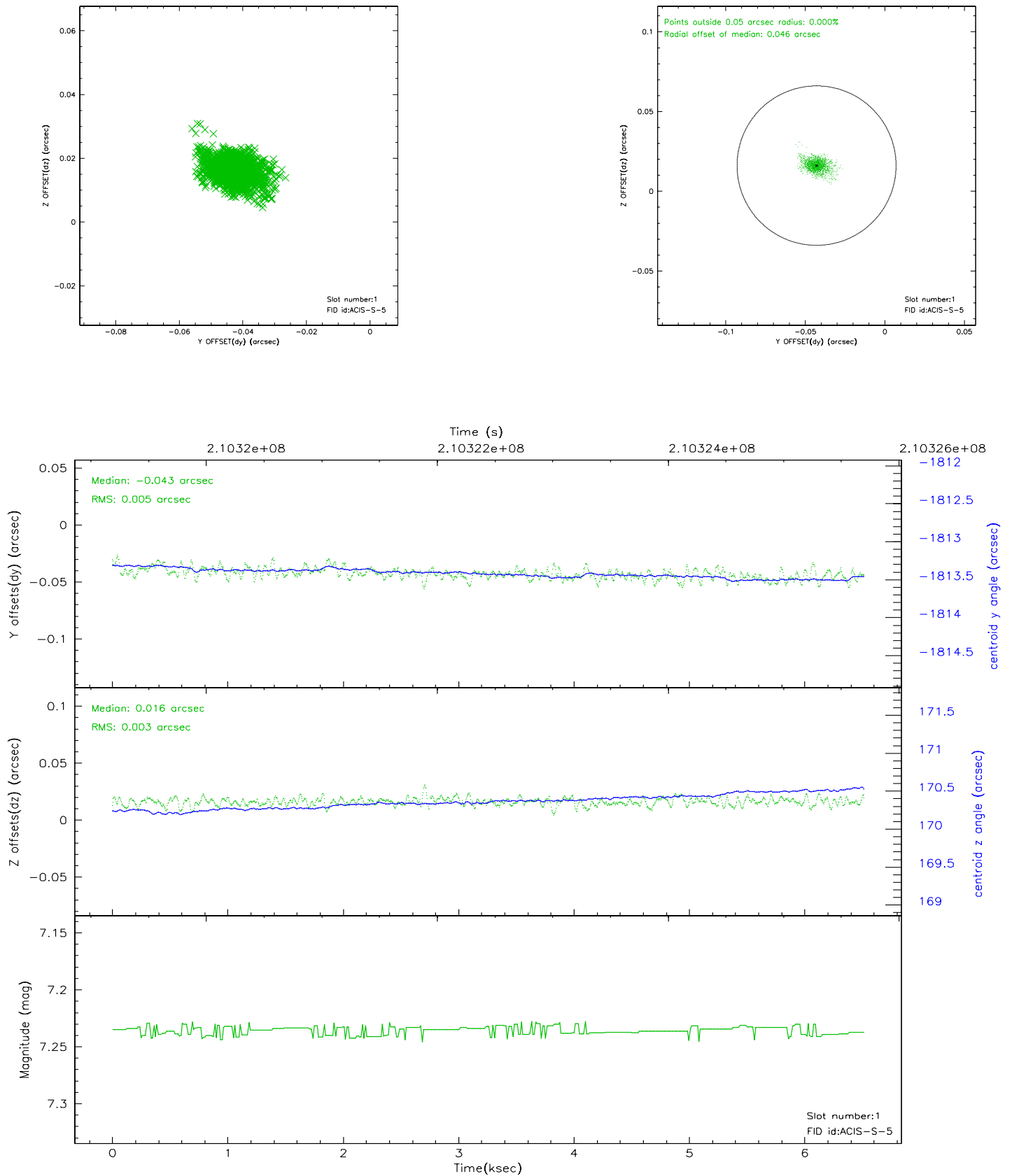


2.5 FID Slots

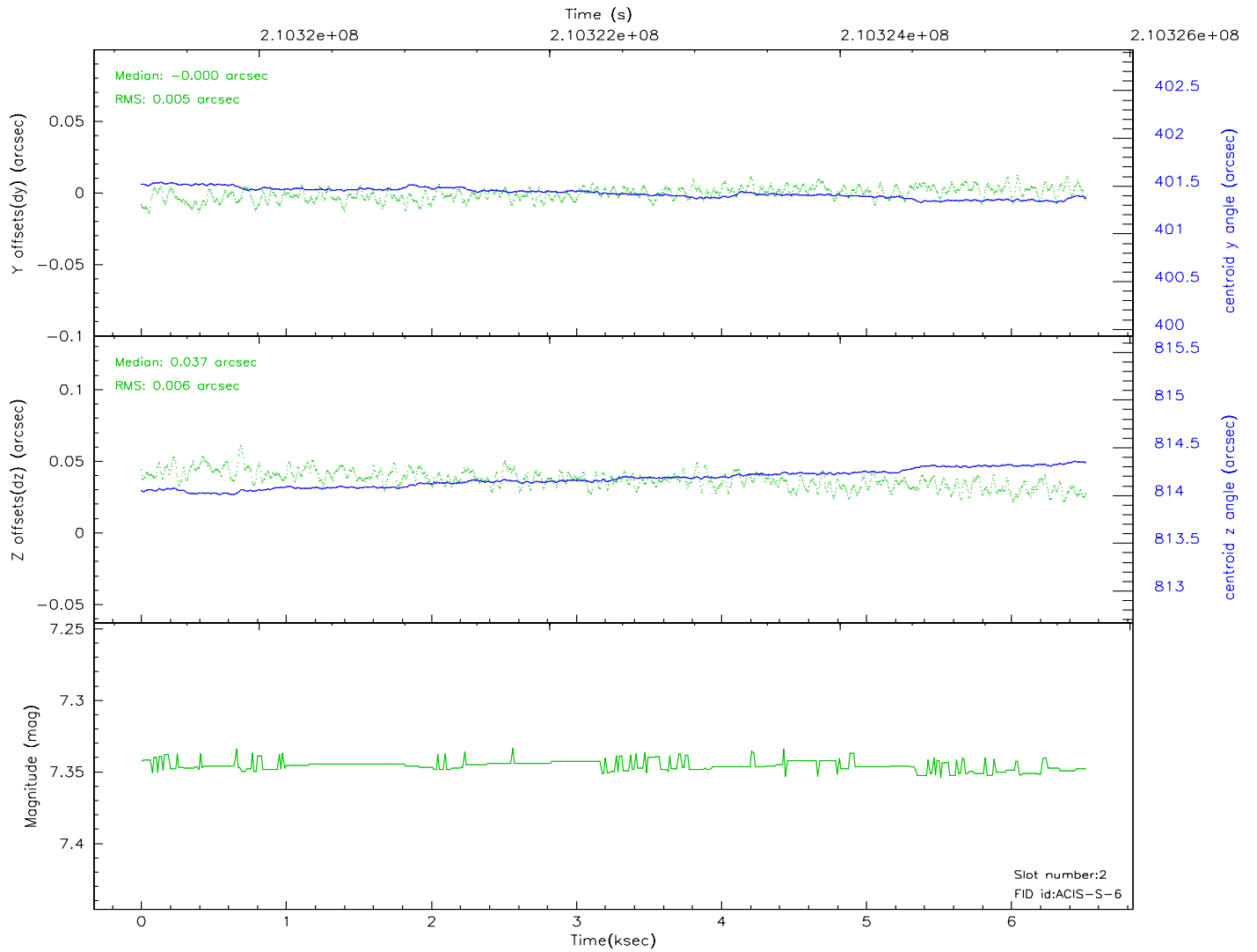
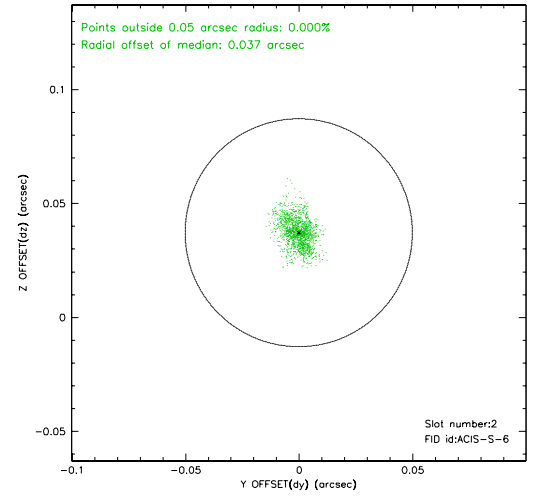
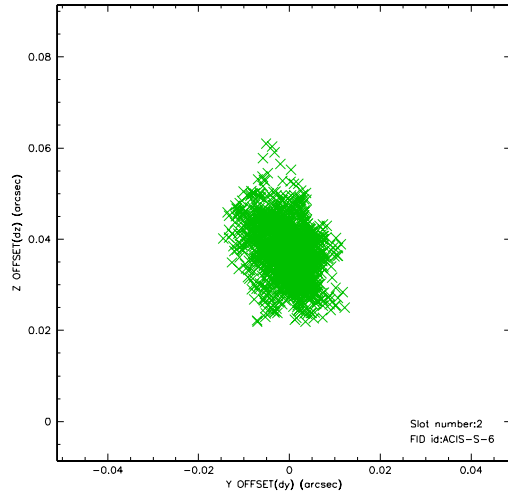
2.5.1 Slot 0



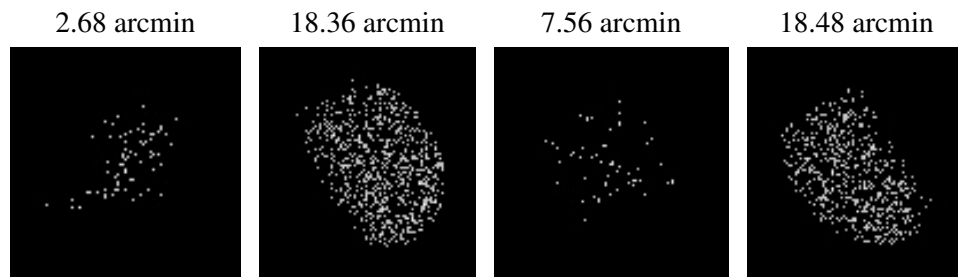
2.5.2 Slot 1



2.5.3 Slot 2



3 Point Sources



A Summary

A.1 Status

V&V Scientist	Jen Lauer
V&V Date (YYYY-MM-DD)	2006.04.19
V&V Edition	1
V&V Disposition and Status	OK
V&V Charge Time	5.955

A.2 Comments

Monitor constraint met.