

V&V Reference Report

L2 ASCDS Version : 7.6.7.2

Observation 4699 - L2 Version 001
Chandra X-Ray Center

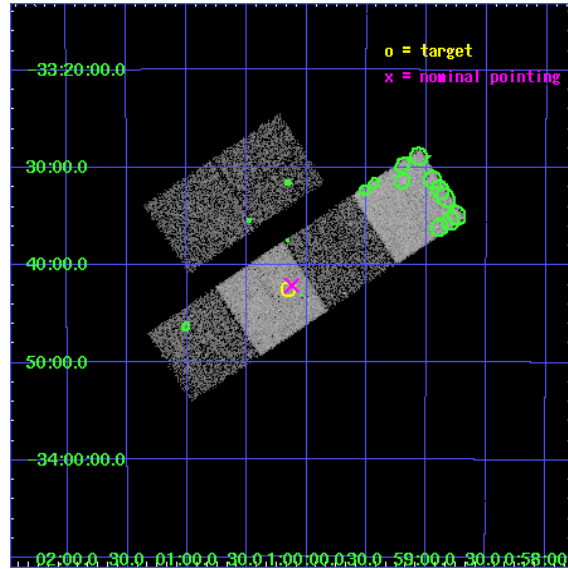
L2 Processing Date : May 18 2006

Contents

1	Front	2
2	OBI	3
2.1	OBI	3
2.1.1	Images	3
2.1.2	Bias	3
2.1.3	Parameters	4
2.1.4	Events	4
2.2	Compared Parameters	5
2.3	Aspect	6
2.4	Star Slots	9
2.4.1	Slot 3	9
2.4.2	Slot 4	10
2.4.3	Slot 5	11
2.4.4	Slot 6	12
2.4.5	Slot 7	13
2.5	FID Slots	14
2.5.1	Slot 0	14
2.5.2	Slot 1	15
2.5.3	Slot 2	16
3	Point Sources	17
A	Summary	18
A.1	Status	18
A.2	Comments	18

1 Front

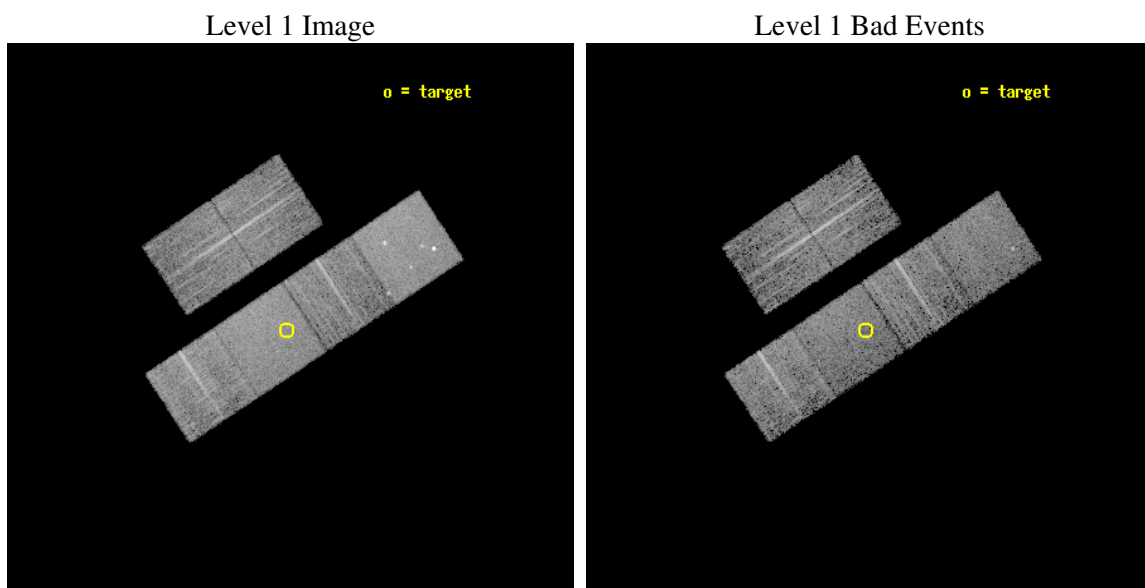
seq_num	600354
obs_id	4699
title	Using the Sculptor Dwarf Spheroidal Galaxy to Constrain X-ray Binary Production in Population II
observer	Dr. Thomas Maccarone
object	SCULPTOR DWARF SPHEROIDAL
dtcycle	0
cycle	P
ra_targ	15.039167
dec_targ	-33.708889
ra_nom	15.030669147531
dec_nom	-33.70215230574
roll_nom	146.42164584229
revision	2
ontime	6355.199976325
livetime	6274.7266075828
ontime2	6355.199976325
ontime3	6355.199976325
ontime5	6355.199976325
ontime6	6355.199976325
ontime7	6355.199976325
ontime8	6355.199976325
l2events	70476



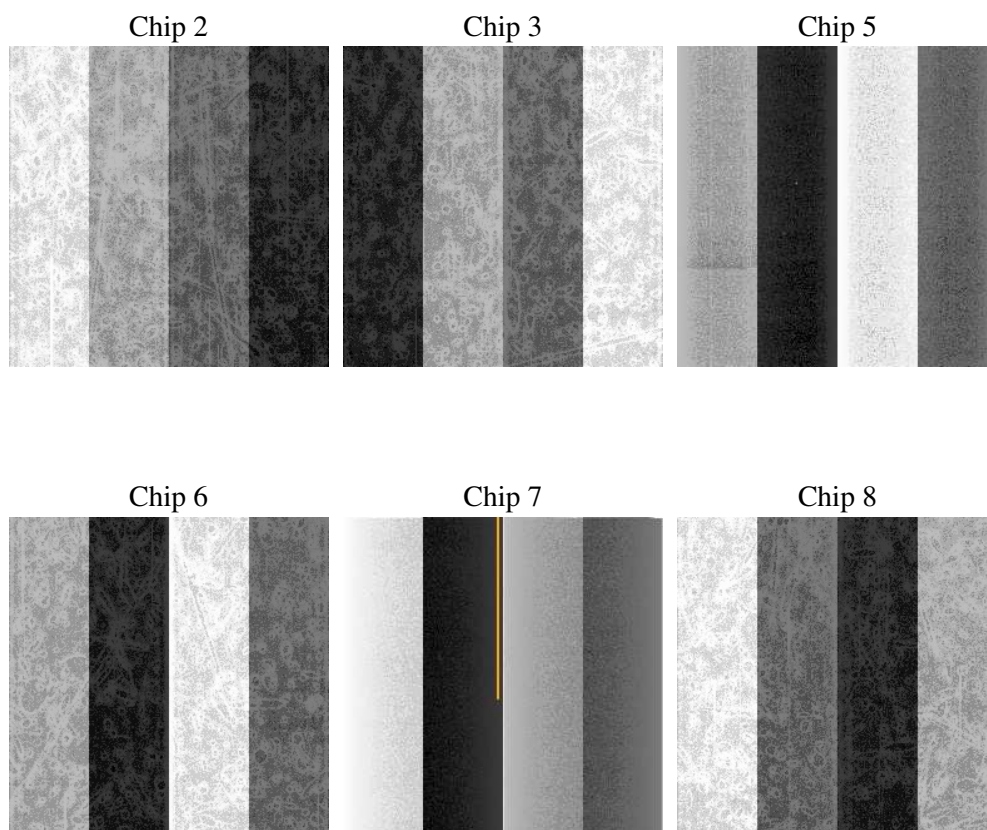
2 OBI

2.1 OBI

2.1.1 Images



2.1.2 Bias



2.1.3 Parameters

obi_num	0
ascdsver	7.6.7.2
caldsver	3.2.2
date	2006-05-18T18:55:50
revision	2

sched_exp_time	6200.000000
ontime	7182.0561369658
ontime2	7182.0561170876
ontime3	7182.0561170876
ontime5	7182.0561369658
ontime6	7182.0561170876
ontime7	7182.0561369658
ontime8	7182.0561369658
l1events	371438

2.1.4 Events

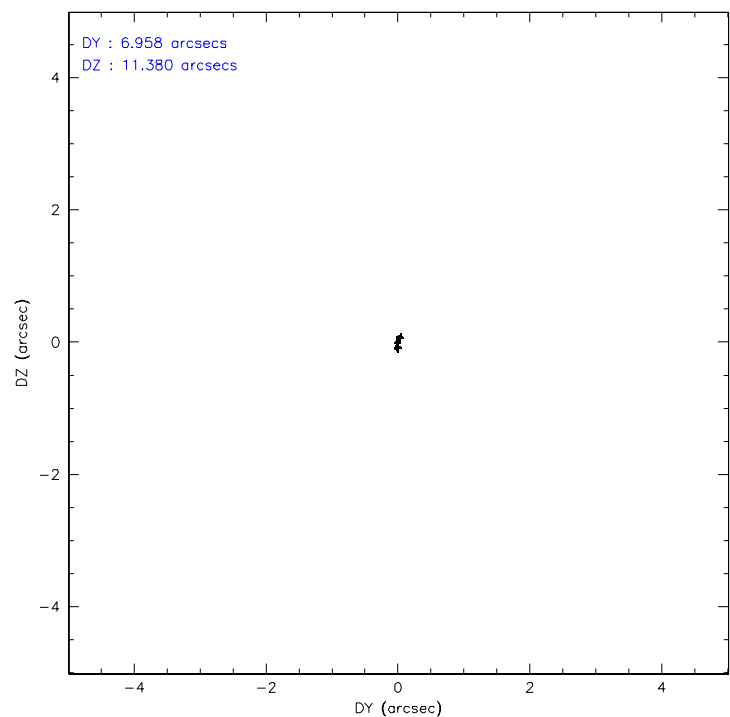
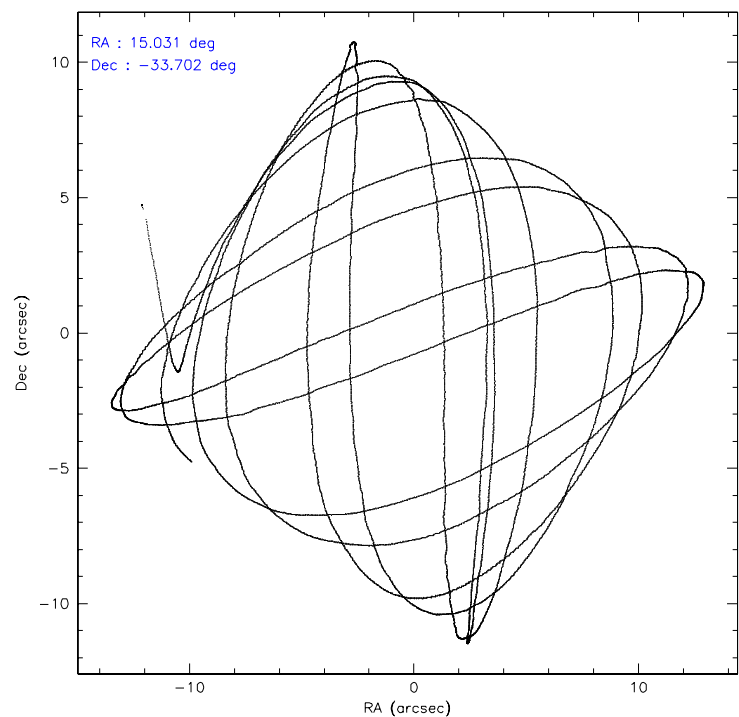
	ccd 2	ccd 3	ccd 5	ccd 6	ccd 7	ccd 8
level 1 events	54511	50578	78879	53499	69124	64847
rejected events	48981	45269	47413	48144	45678	52610
rejected %	89%	89%	60%	89%	66%	81%

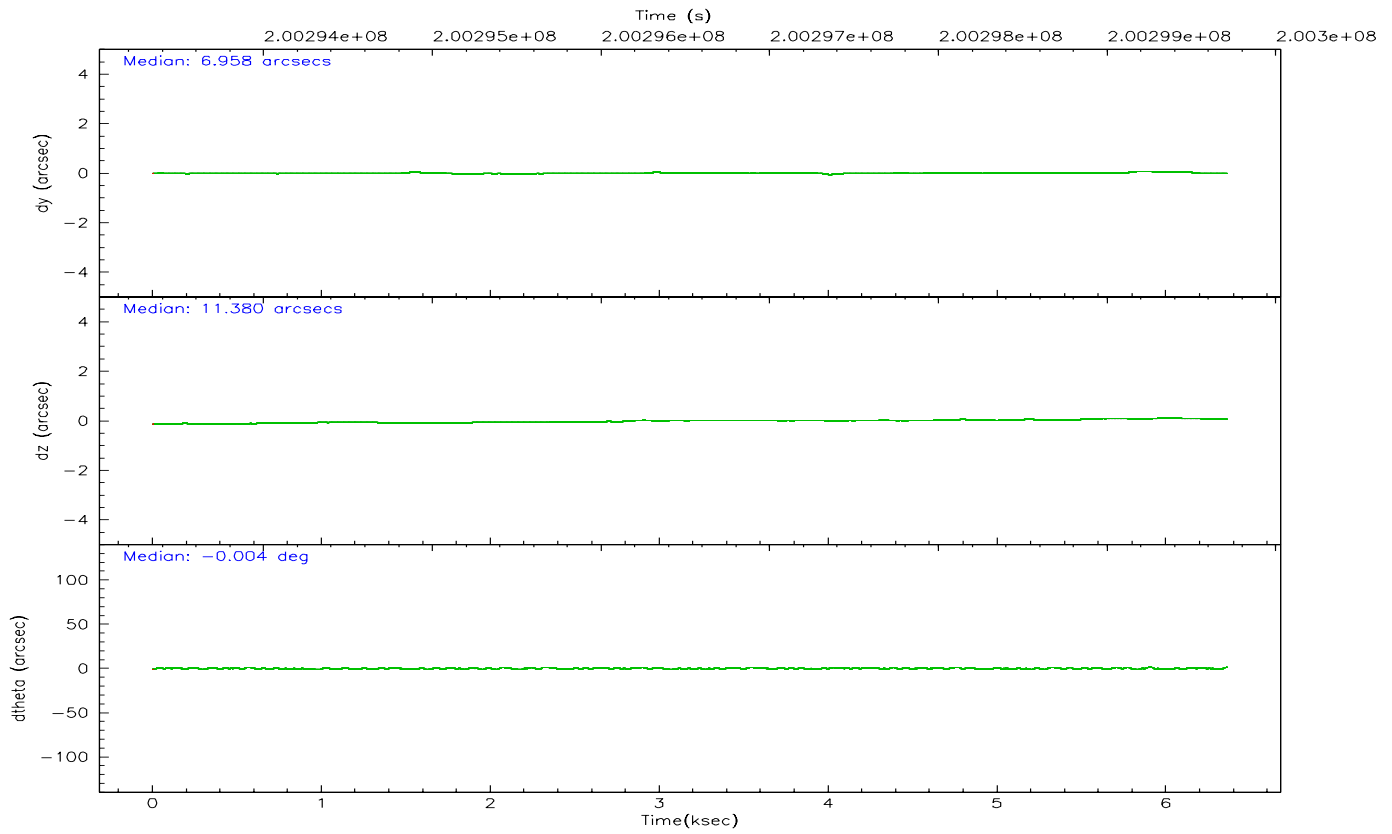
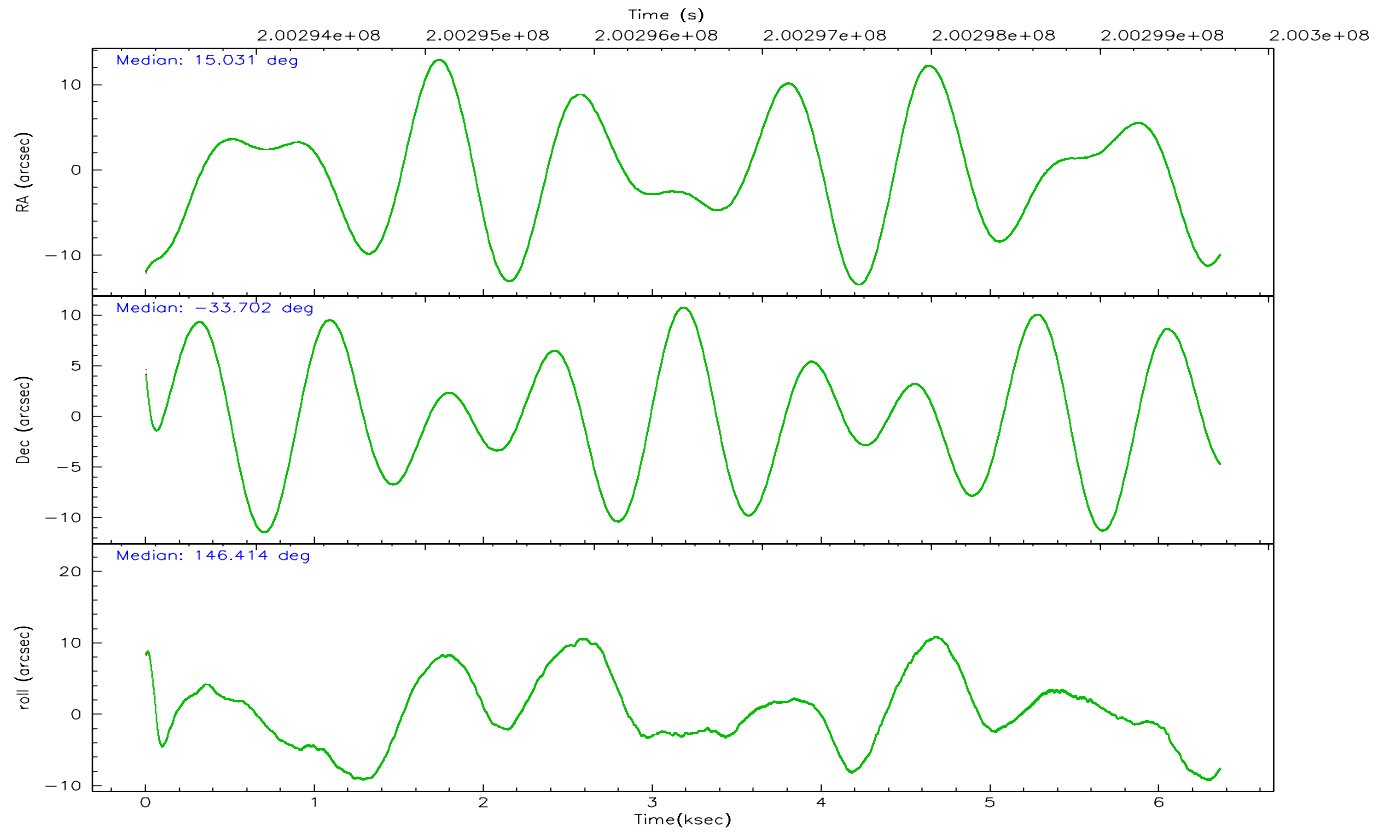
	ccd 2	ccd 3	ccd 5	ccd 6	ccd 7	ccd 8
grade 0 events	2711	2562	3874	2436	1549	4291
	4%	5%	4%	4%	2%	6%
grade 1 events	38	27	364	30	45	42
	0%	0%	0%	0%	0%	0%
grade 2 events	1341	1151	11018	1181	6490	3063
	2%	2%	13%	2%	9%	4%
grade 3 events	603	629	777	647	1281	1385
	1%	1%	0%	1%	1%	2%
grade 4 events	574	611	715	610	1284	1317
	1%	1%	0%	1%	1%	2%
grade 5 events	2141	2224	3573	2421	4526	3124
	3%	4%	4%	4%	6%	4%
grade 6 events	1061	1026	19159	1228	15831	3703
	1%	2%	24%	2%	22%	5%
grade 7 events	46042	42348	39399	44946	38118	47922
	84%	83%	49%	84%	55%	73%

2.2 Compared Parameters

Parameter	Planned	Actual	Parameter	Planned	Actual
Instrument	ACIS	ACIS	Obspar format version number	6	6
Detector	ACIS-235678	ACIS-235678	Obspar file type	PREDICTED	ACTUAL
Grating	NONE	NONE	Obspar update status	NONE	UPDATED
Data mode	VFAINT	VFAINT	On-chip summing requested	N	N
Observation mode	POINTING	POINTING	Subarray requested	NONE	NONE
Pointing RA	15.063456	15.03066914753094	Alternating exposures requested	N	N
Pointing Dec	-33.703541	-33.70215230574009	Primary exposure time	0.000000	3.2
Pointing Roll	146.283183	146.4216458422899			
SIM focus pos (mm)	-0.684267	-0.6828225247311905			
SIM defocus (mm)	0	0.001444936568705701			
SIM translation stage pos (mm)	-190.132523	-190.1400660498719			
SIM translation stage offset (mm)	0	0.00754346686406393			
Observation start time	200293509.184000	200292038.6171			
Observation start date	2004-05-07T05:04:05	2004-05-07T04:40:38			
Observation end time	200299709.184000	200300464.62997			
Observation end date	2004-05-07T06:47:25	2004-05-07T07:01:04			
Read mode	TIMED	TIMED			

2.3 Aspect



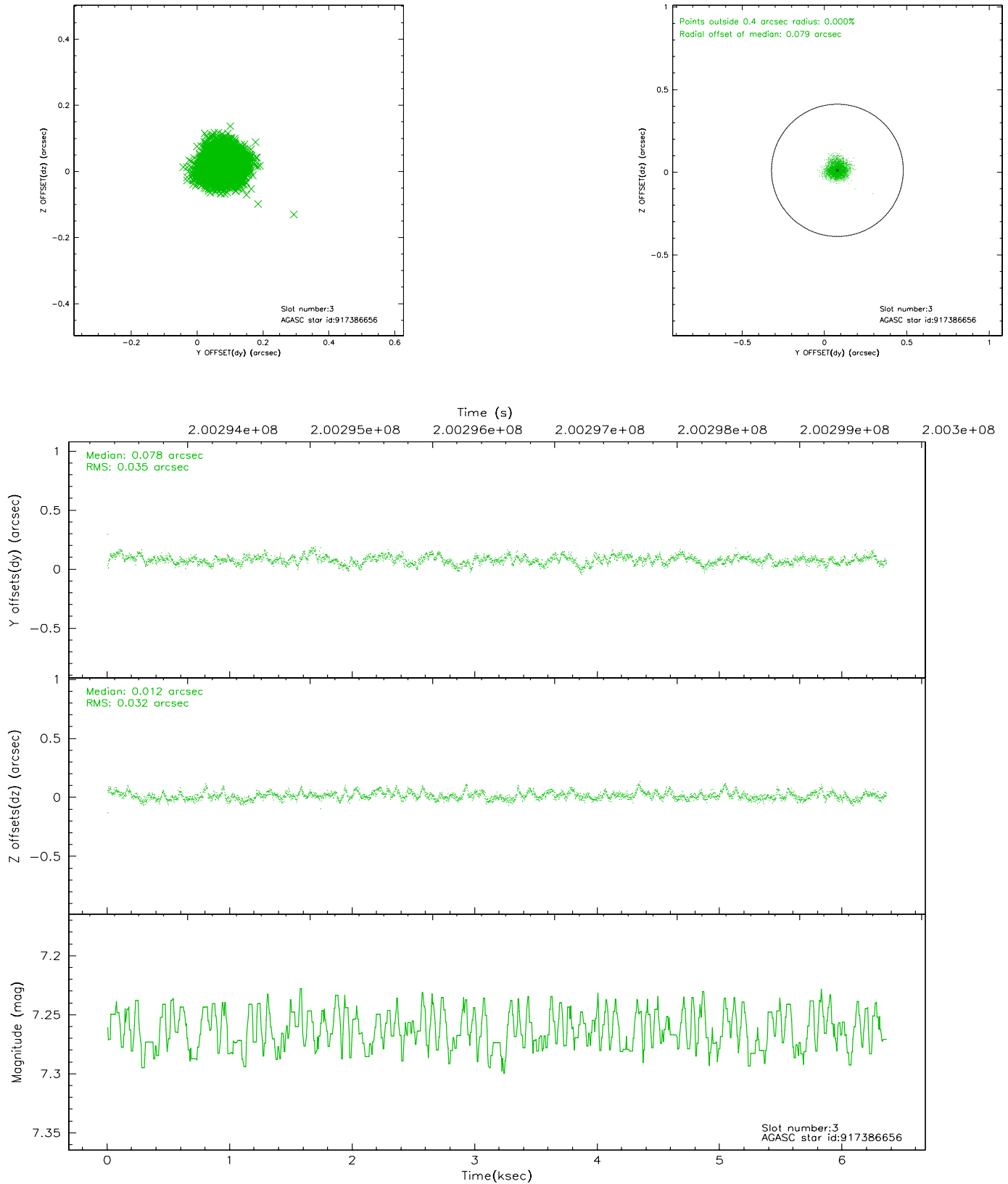


Slot Statistics

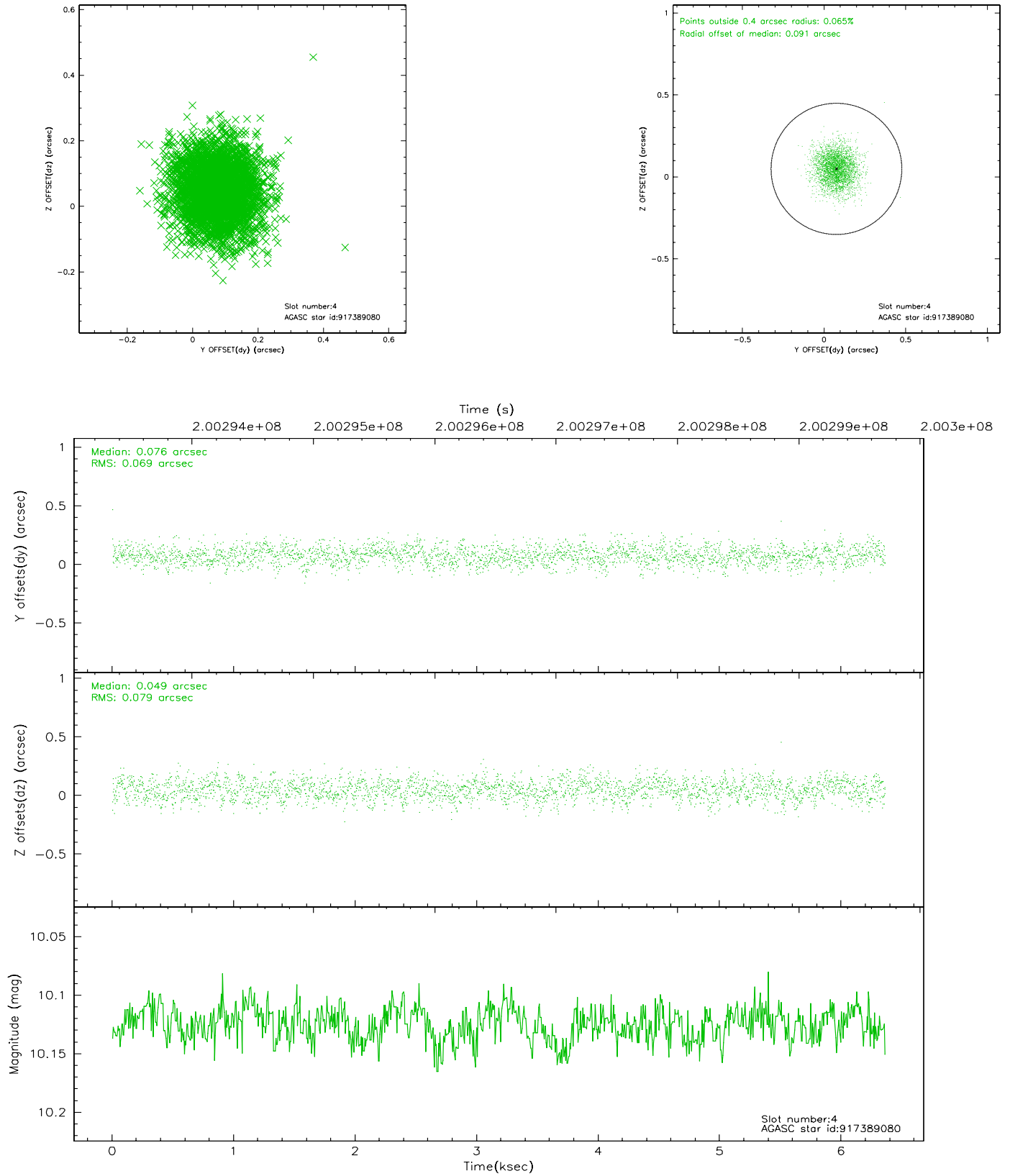
slot	status	id	mag	n_pts	med_dy	med_dz	dr1	dr2	ra	dec	mean_y	mean_z
0	FID	ACIS-S-2	7.10	1552	-0.011	0.004	0.005	0.010	0.000000	0.000000	-759.71	-1732.65
1	FID	ACIS-S-4	7.20	1552	0.014	0.002	0.006	0.010	0.000000	0.000000	2153.16	174.90
2	FID	ACIS-S-6	7.34	1552	-0.030	0.000	0.007	0.011	0.000000	0.000000	403.42	813.33
3	GUIDE	917386656	7.26	3102	0.078	0.012	0.050	0.080	15.342124	-33.359890	-10.73	-1493.14
4	GUIDE	917389080	10.12	3099	0.076	0.049	0.112	0.182	15.722484	-33.662555	-1564.01	-1214.14
5	GUIDE	917389288	9.57	3100	0.014	0.225	0.104	0.168	15.394706	-33.185862	203.10	-2102.73
6	GUIDE	917650528	8.72	3102	-0.144	-0.195	0.081	0.127	14.274554	-33.869842	1623.67	1813.97
7	GUIDE	917651768	9.63	3099	-0.022	-0.099	0.118	0.183	14.115744	-33.817552	2122.68	1926.60

2.4 Star Slots

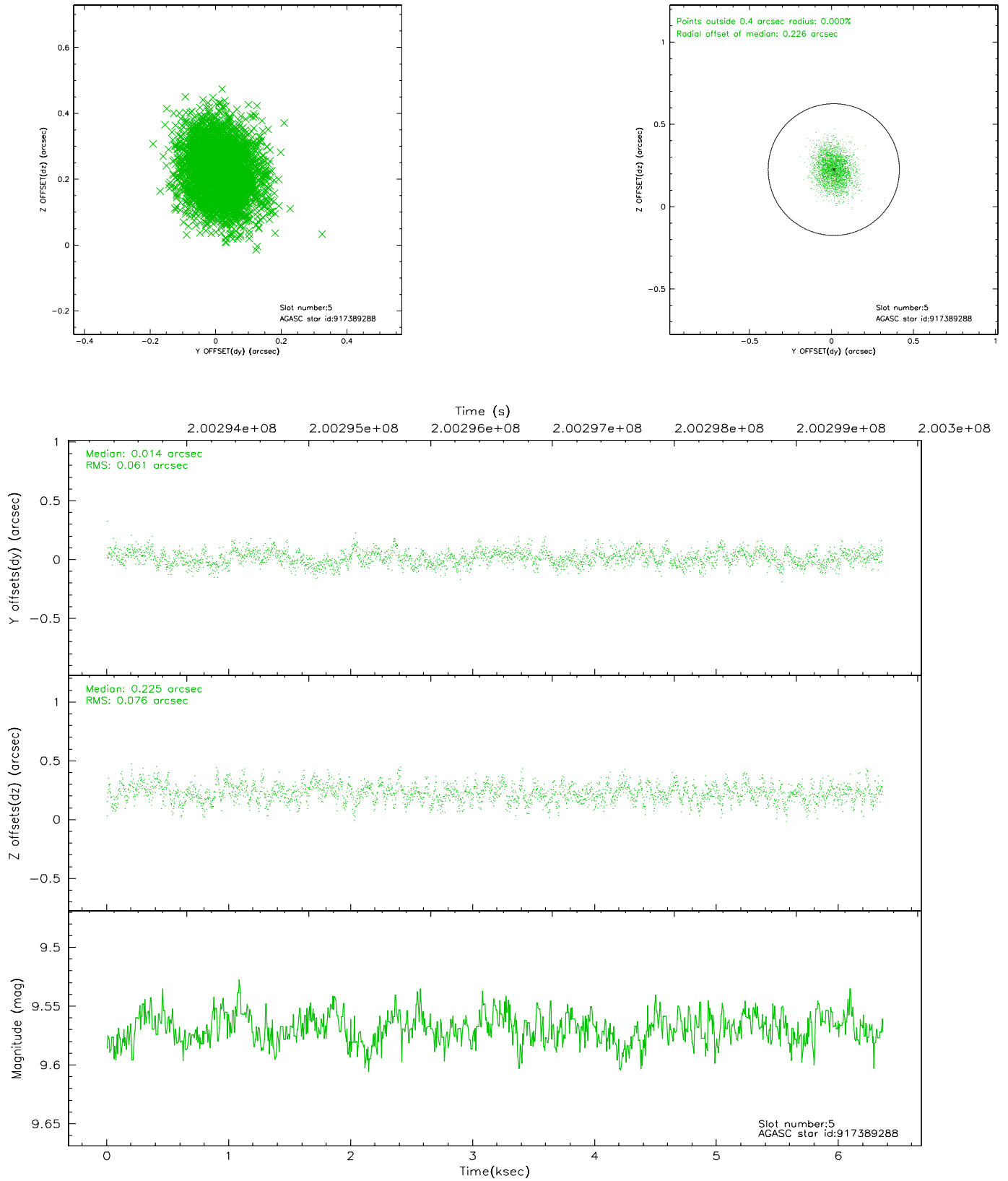
2.4.1 Slot 3



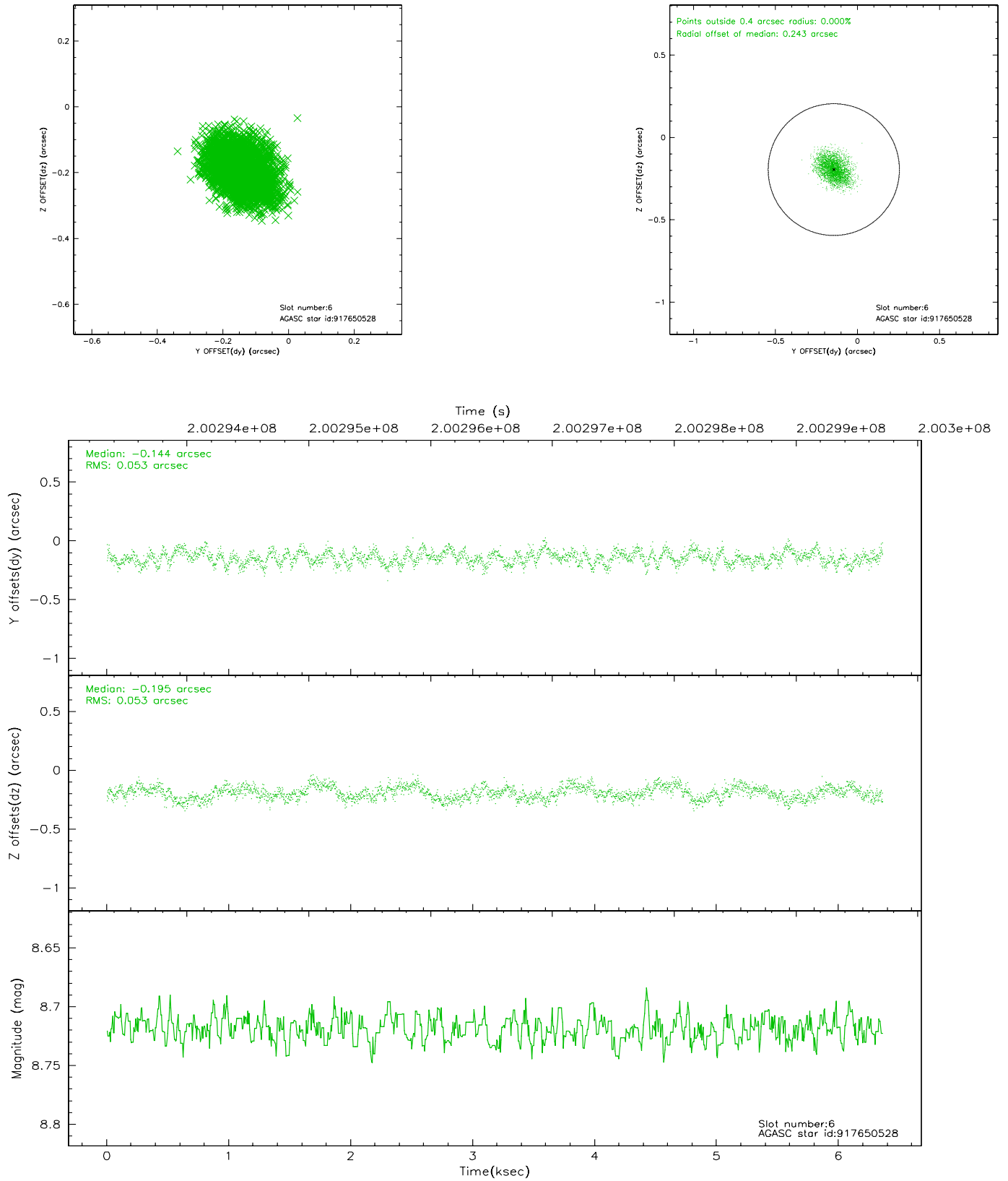
2.4.2 Slot 4



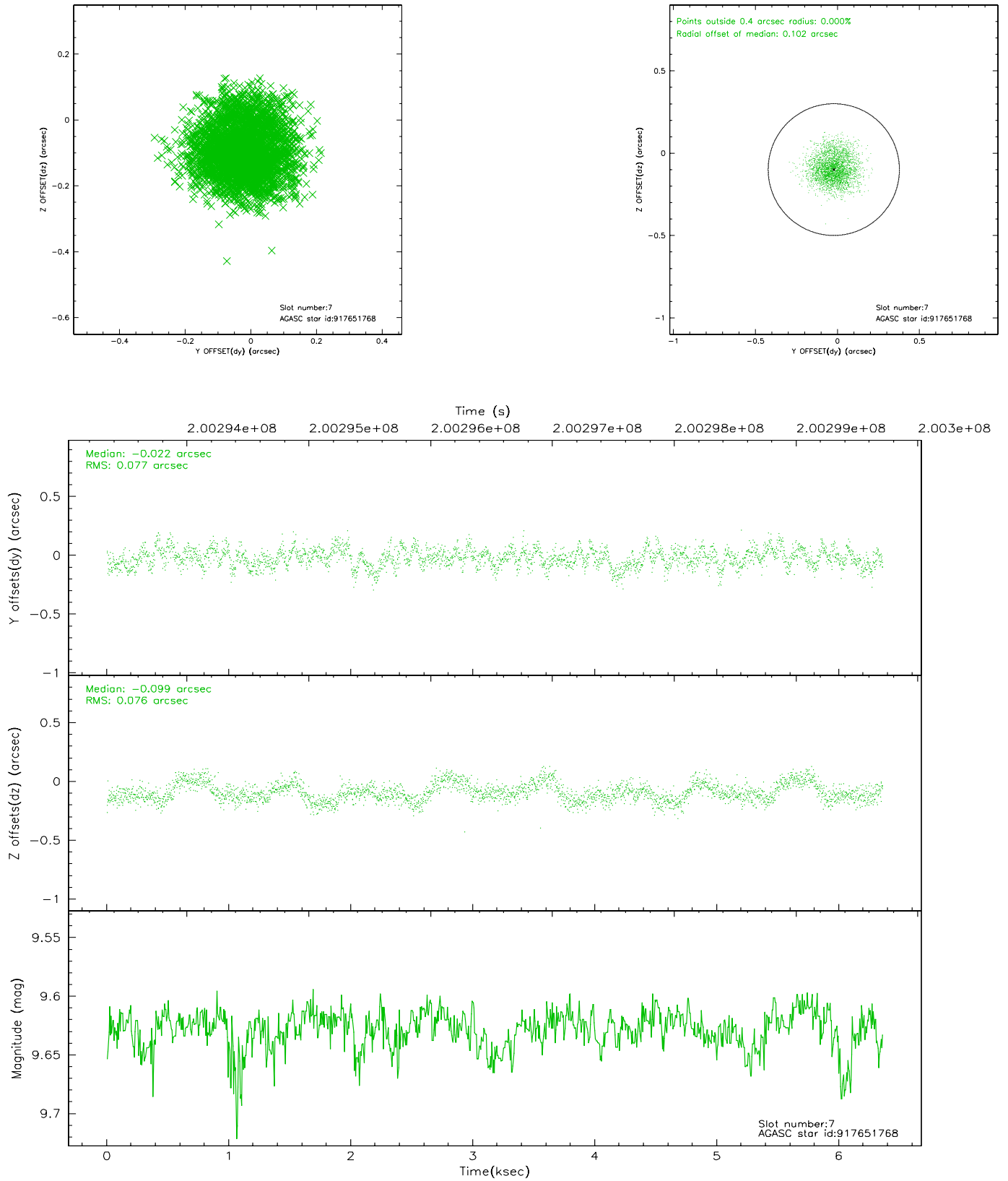
2.4.3 Slot 5



2.4.4 Slot 6

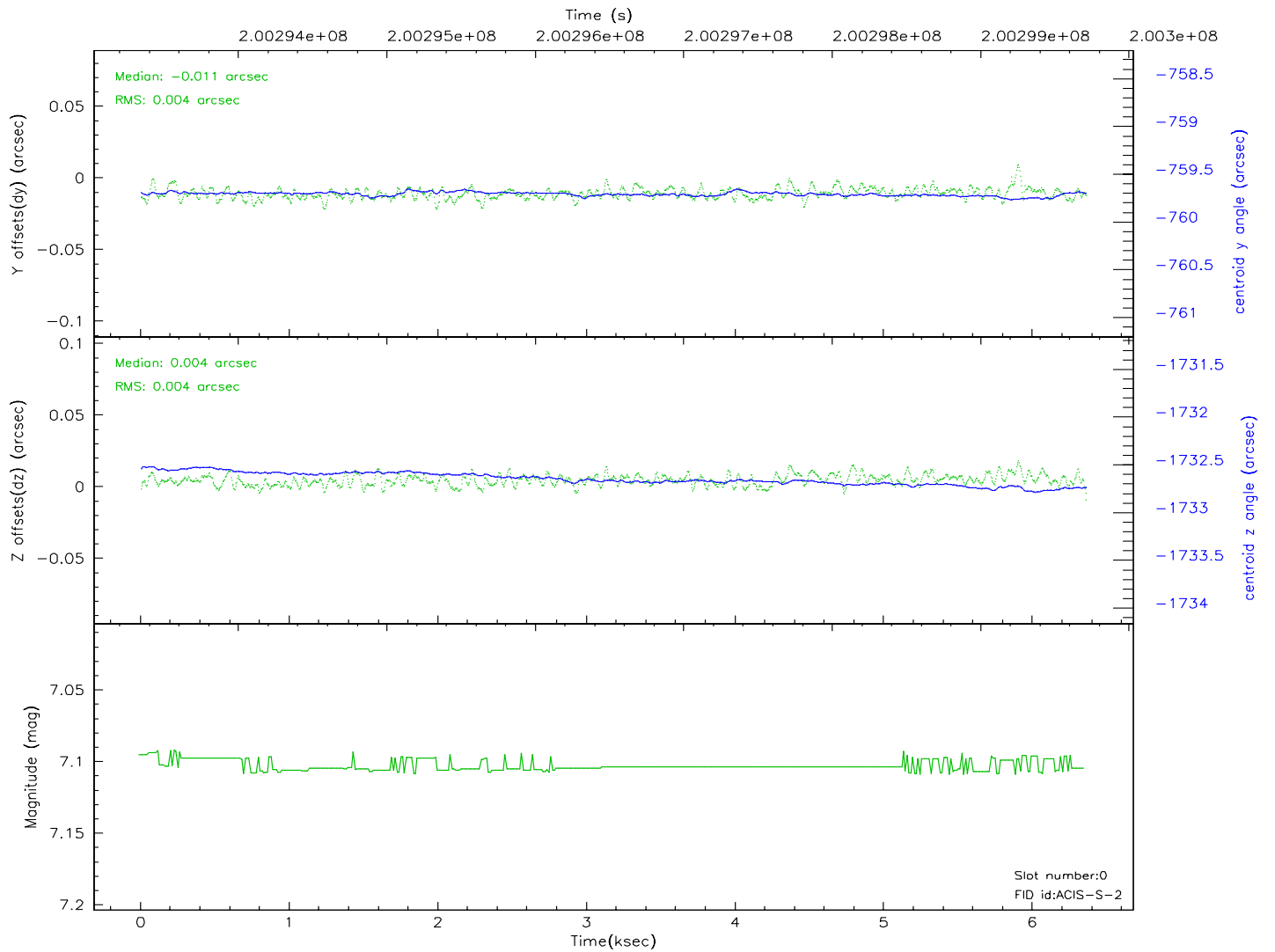
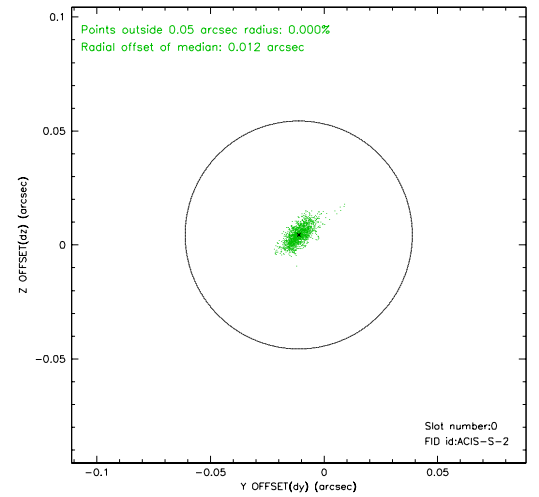
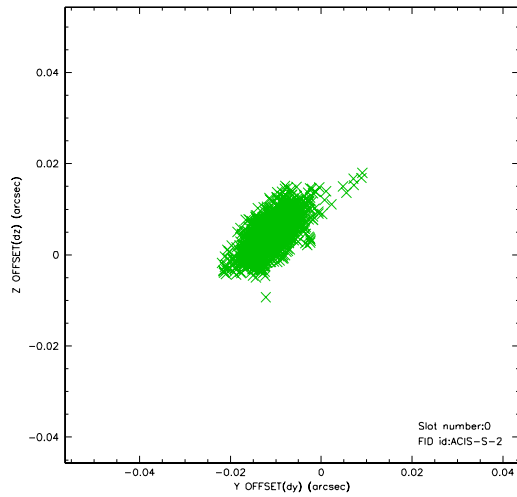


2.4.5 Slot 7

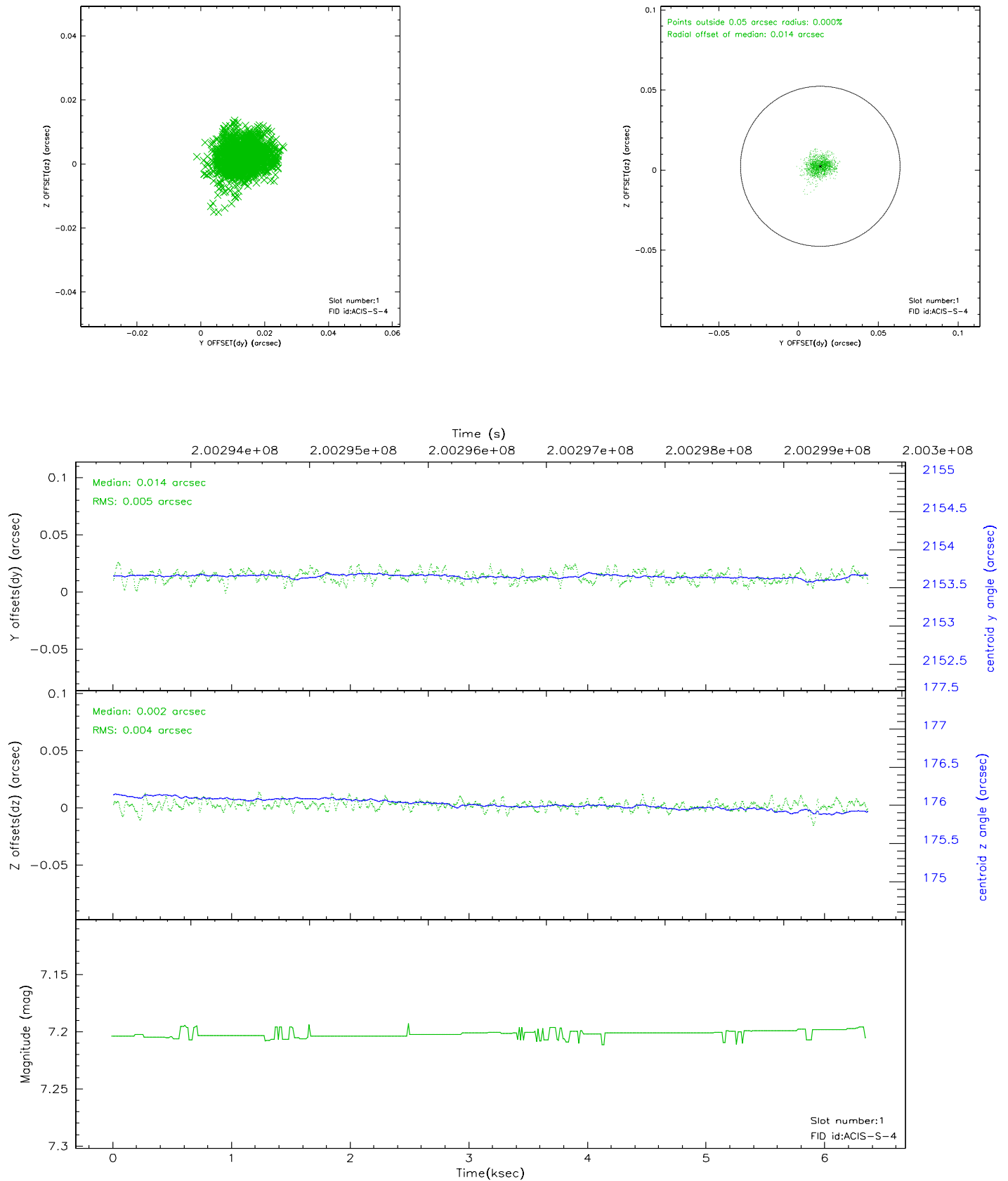


2.5 FID Slots

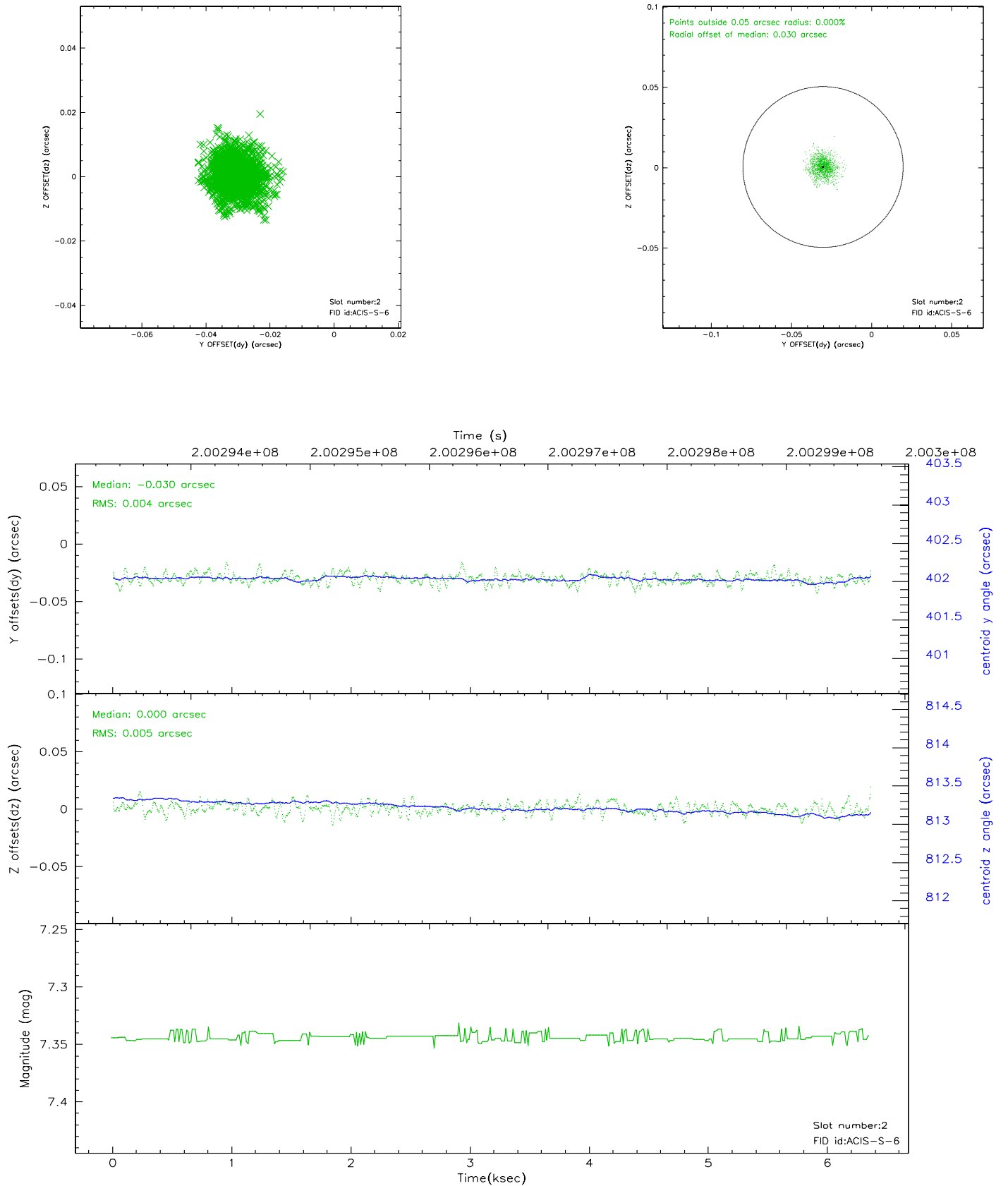
2.5.1 Slot 0



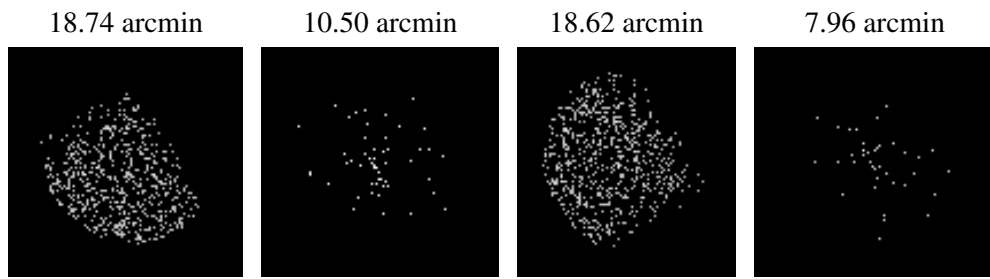
2.5.2 Slot 1



2.5.3 Slot 2



3 Point Sources



A Summary

A.1 Status

V&V Scientist	Beth Sundheim
V&V Date (YYYY-MM-DD)	2006.05.18
V&V Edition	1
V&V Disposition and Status	OK
V&V Charge Time	6.355

A.2 Comments