

V&V Reference Report

L2 ASCDS Version : 7.6.7.2

Observation 4698 - L2 Version 001
Chandra X-Ray Center

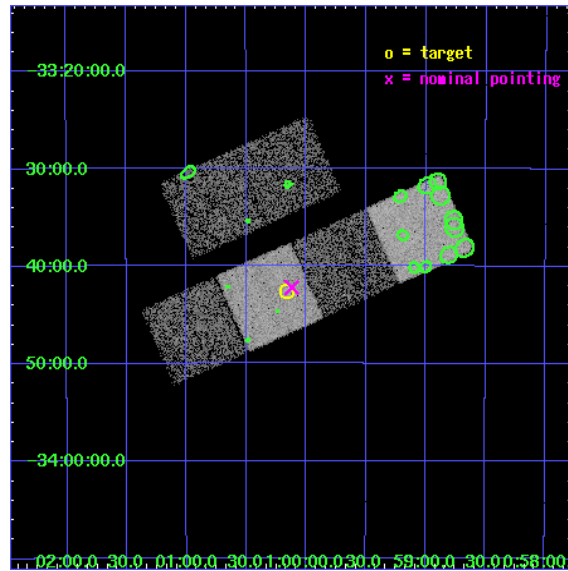
L2 Processing Date : May 20 2006

Contents

1	Front	2
2	OBI	3
2.1	OBI	3
2.1.1	Images	3
2.1.2	Bias	3
2.1.3	Parameters	4
2.1.4	Events	4
2.2	Compared Parameters	5
2.3	Aspect	6
2.4	Star Slots	9
2.4.1	Slot 3	9
2.4.2	Slot 4	10
2.4.3	Slot 5	11
2.4.4	Slot 6	12
2.4.5	Slot 7	13
2.5	FID Slots	14
2.5.1	Slot 0	14
2.5.2	Slot 1	15
2.5.3	Slot 2	16
3	Point Sources	17
A	Summary	18
A.1	Status	18
A.2	Comments	18

1 Front

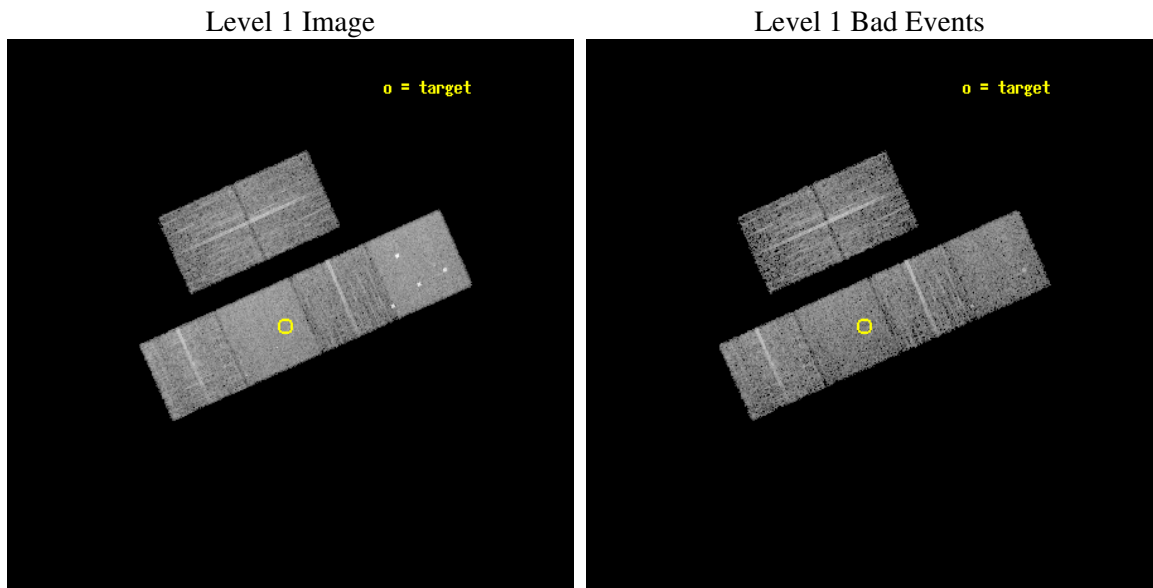
seq_num	600353
obs_id	4698
title	Using the Sculptor Dwarf Spheroidal Galaxy to Constrain X-ray Binary Production in Population II
observer	Dr. Thomas Maccarone
object	SCULPTOR DWARF SPHEROIDAL
dtcycle	0
cycle	P
ra_targ	15.039167
dec_targ	-33.708889
ra_nom	15.029555382569
dec_nom	-33.703407546517
roll_nom	155.96402028194
revision	3
ontime	6137.5999771357
livetime	6059.8819906061
ontime2	6137.5999771357
ontime3	6137.5999771357
ontime5	6137.5999771357
ontime6	6134.358986944
ontime7	6137.5999771357
ontime8	6137.5999771357
l2events	65671



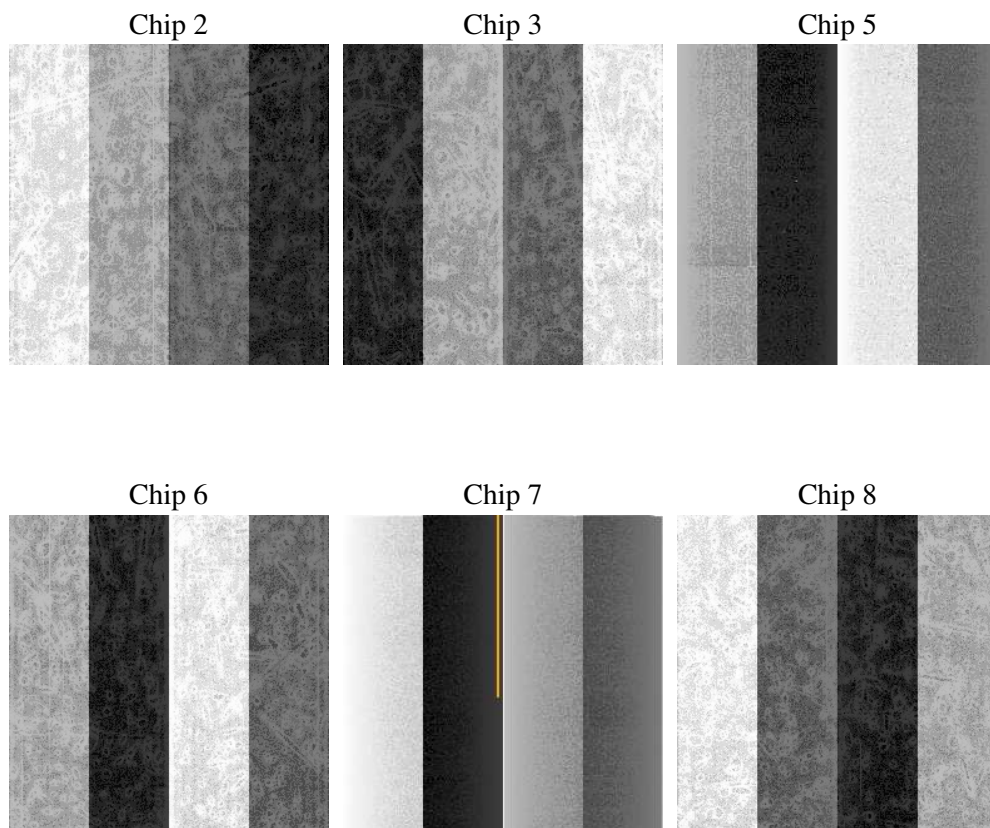
2 OBI

2.1 OBI

2.1.1 Images



2.1.2 Bias



2.1.3 Parameters

obi_num	0
ascdsver	7.6.7.2
caldsver	3.2.2
date	2006-05-20T10:31:29
revision	3

sched_exp_time	6000.000000
ontime	7036.2091802955
ontime2	7036.2091603875
ontime3	7036.2091603875
ontime5	7036.2091802955
ontime6	7032.9681701958
ontime7	7036.2091802955
ontime8	7036.2091603875
l1events	351144

2.1.4 Events

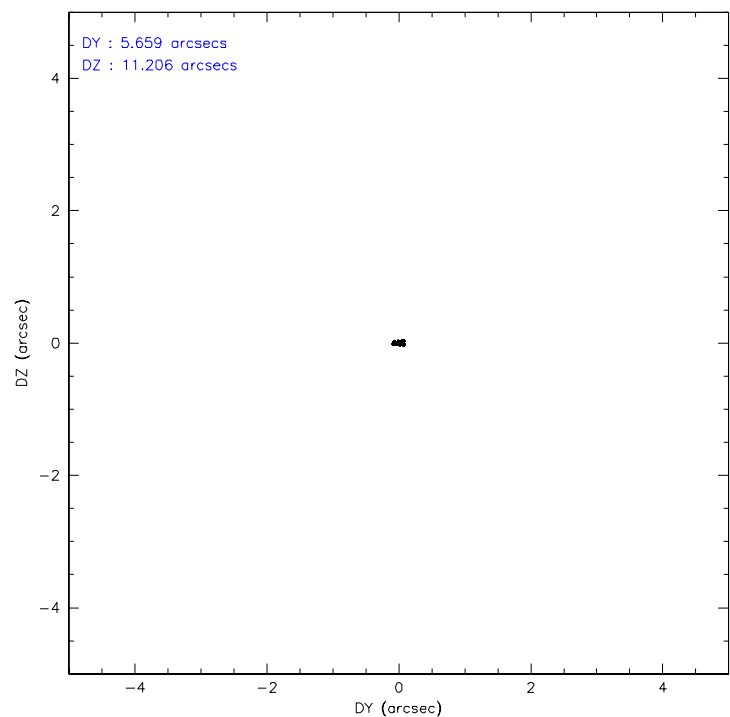
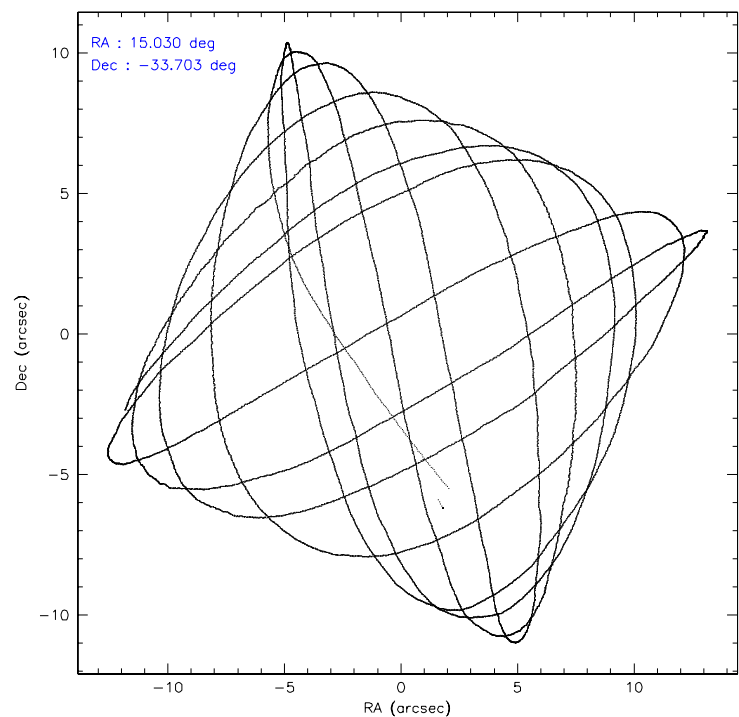
	ccd 2	ccd 3	ccd 5	ccd 6	ccd 7	ccd 8
level 1 events	47758	47796	76350	50762	67052	61426
rejected events	42773	42880	46300	45694	45185	50176
rejected %	89%	89%	60%	90%	67%	81%

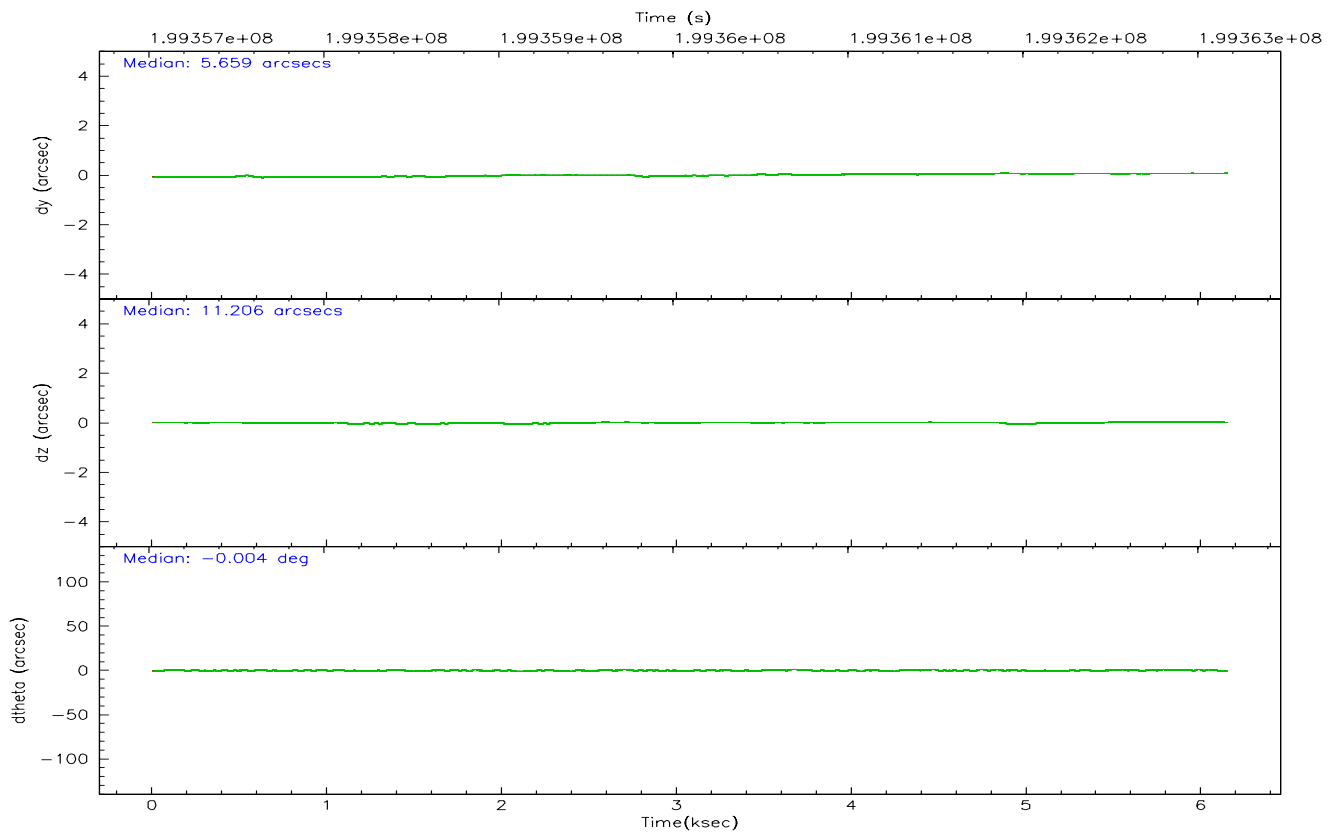
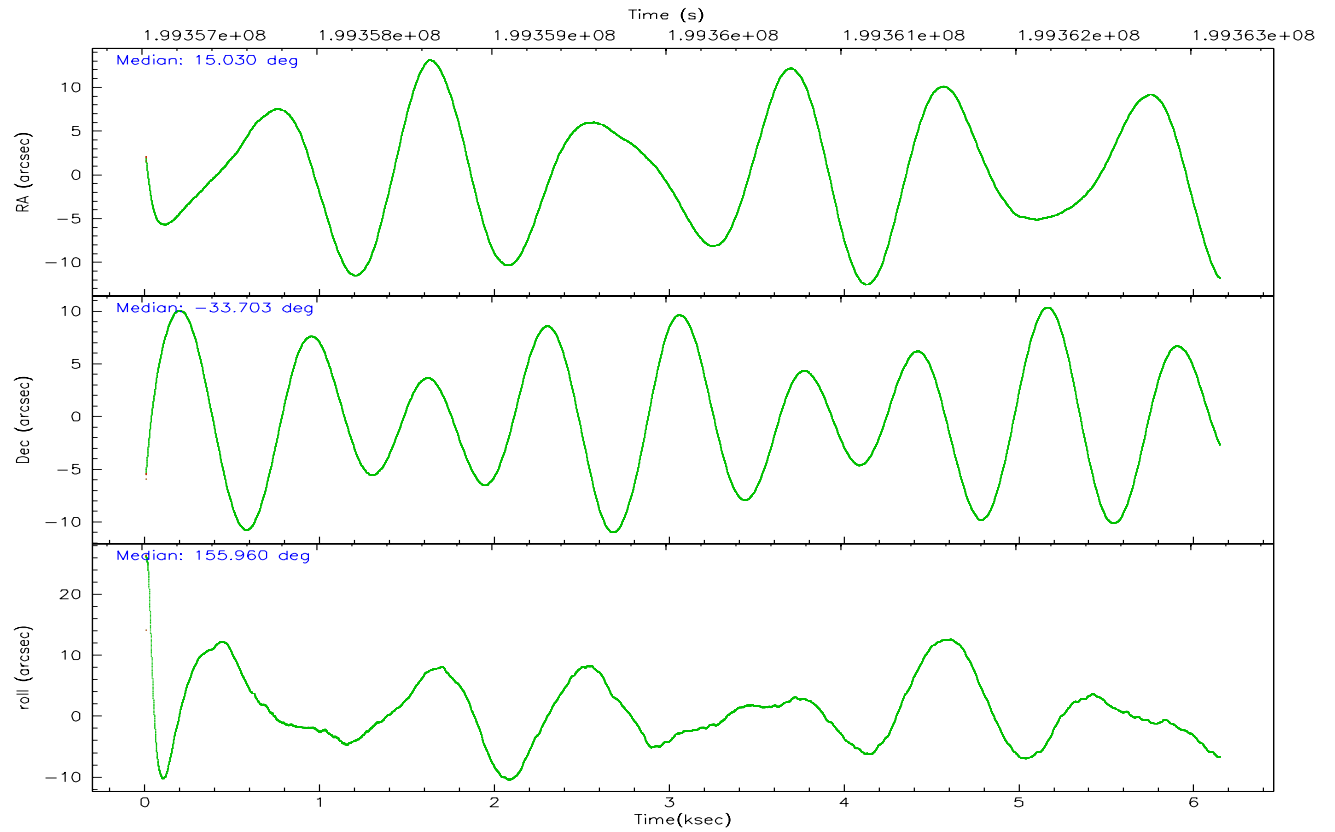
	ccd 2	ccd 3	ccd 5	ccd 6	ccd 7	ccd 8
grade 0 events	2567	2554	4434	2368	1426	3972
	5%	5%	5%	4%	2%	6%
grade 1 events	27	27	214	17	37	38
	0%	0%	0%	0%	0%	0%
grade 2 events	1138	1073	10392	1156	6185	2934
	2%	2%	13%	2%	9%	4%
grade 3 events	509	477	724	568	1298	1272
	1%	0%	0%	1%	1%	2%
grade 4 events	549	553	722	549	1218	1204
	1%	1%	0%	1%	1%	1%
grade 5 events	1943	2163	3640	2277	4400	2905
	4%	4%	4%	4%	6%	4%
grade 6 events	936	1019	18356	1174	15020	3450
	1%	2%	24%	2%	22%	5%
grade 7 events	40089	39930	37868	42653	37468	45651
	83%	83%	49%	84%	55%	74%

2.2 Compared Parameters

Parameter	Planned	Actual	Parameter	Planned	Actual
Instrument	ACIS	ACIS	Obspar format version number	6	6
Detector	ACIS-235678	ACIS-235678	Obspar file type	PREDICTED	ACTUAL
Grating	NONE	NONE	Obspar update status	NONE	UPDATED
Data mode	VFAINT	VFAINT	On-chip summing requested	N	N
Observation mode	POINTING	POINTING	Subarray requested	NONE	NONE
Pointing RA	15.062049	15.02955538256939	Alternating exposures requested	N	N
Pointing Dec	-33.700258	-33.70340754651654	Primary exposure time	0.000000	3.2
Pointing Roll	155.825356	155.9640202819411			
SIM focus pos (mm)	-0.684267	-0.6828225247311905			
SIM defocus (mm)	0	0.001444936568705701			
SIM translation stage pos (mm)	-190.132523	-190.1400660498719			
SIM translation stage offset (mm)	0	0.00754346686406393			
Observation start time	199357175.184000	199355678.01332			
Observation start date	2004-04-26T08:58:31	2004-04-26T08:34:38			
Observation end time	199363175.184000	199363777.56367			
Observation end date	2004-04-26T10:38:31	2004-04-26T10:49:37			
Read mode	TIMED	TIMED			

2.3 Aspect



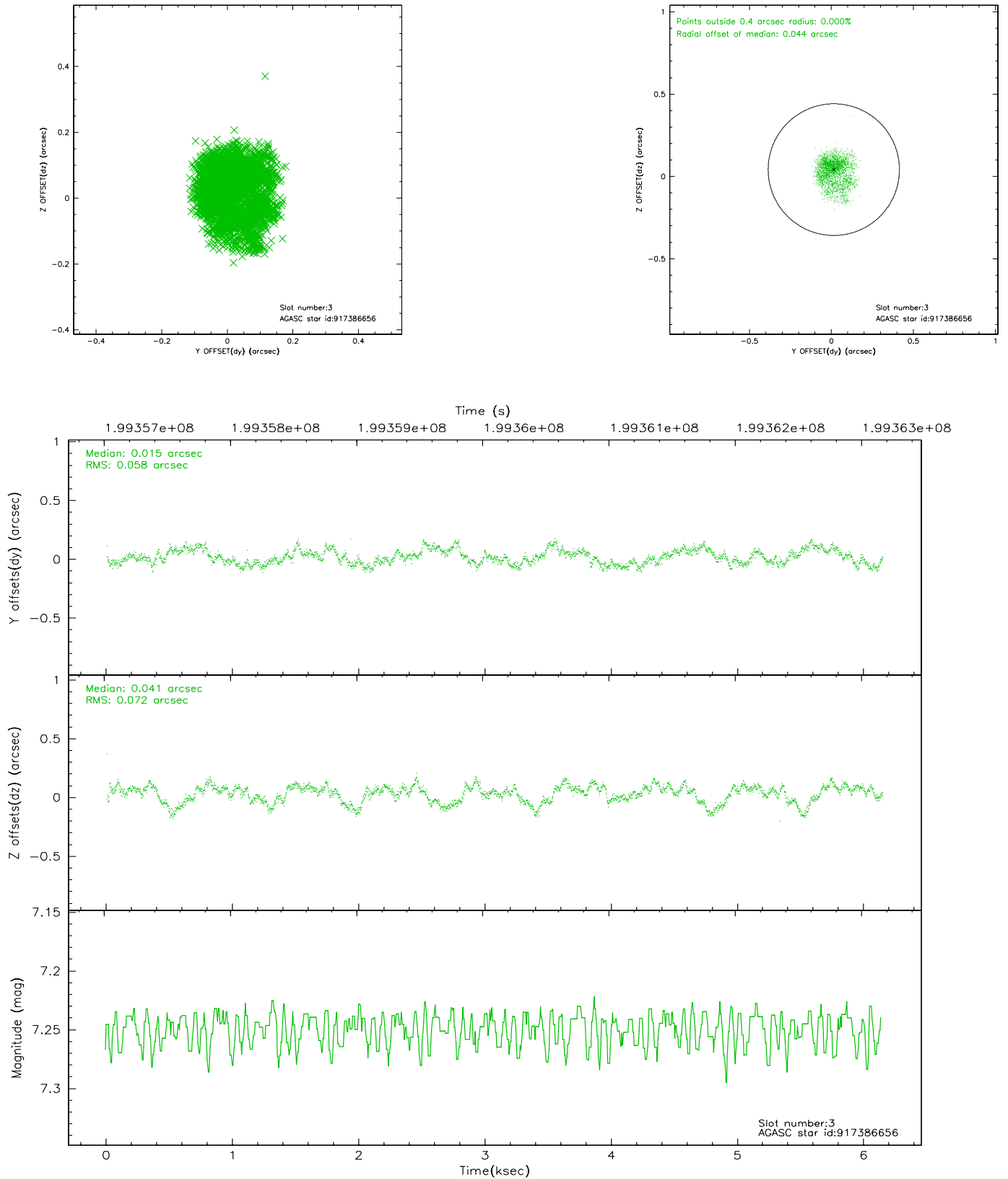


Slot Statistics

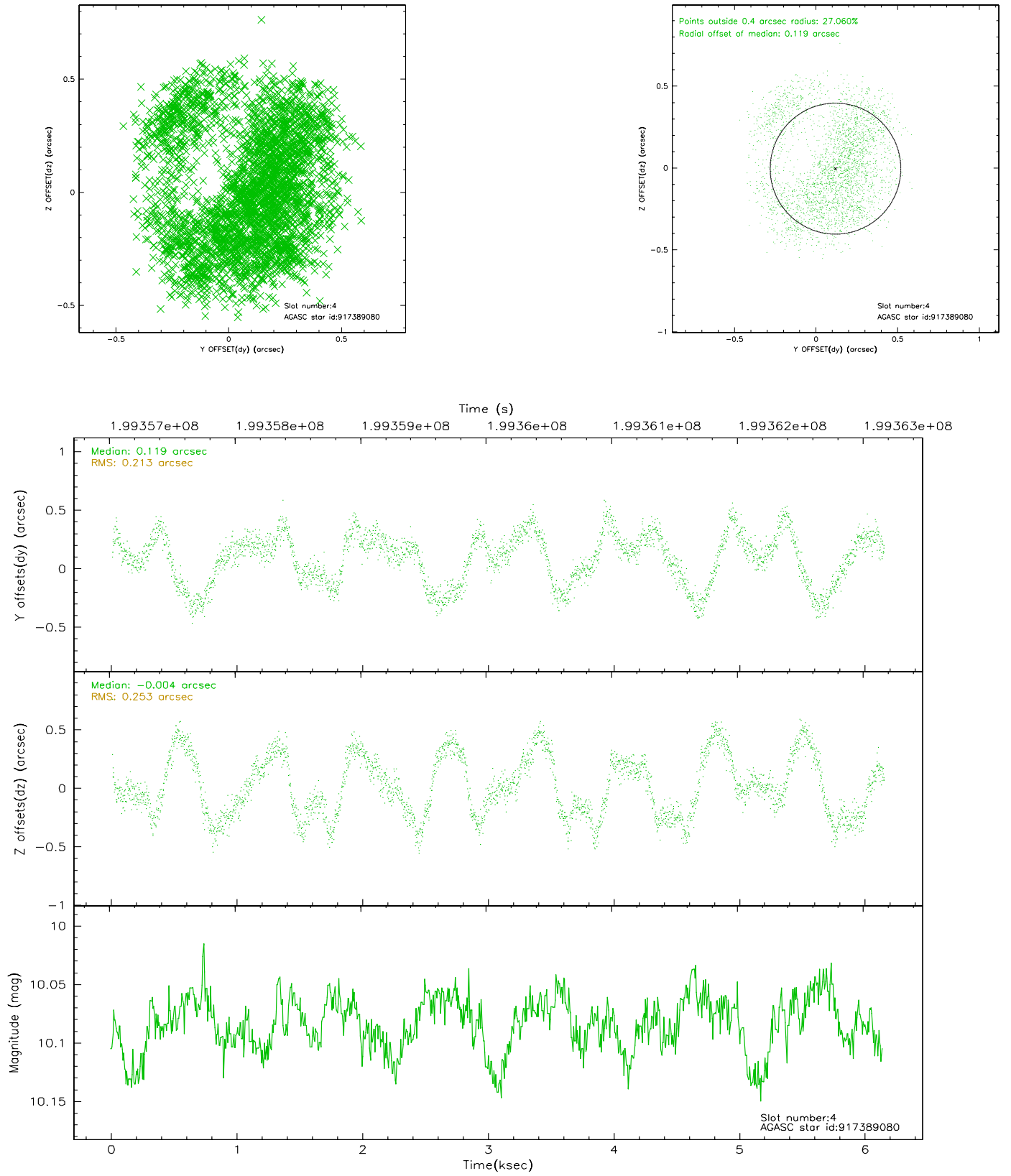
slot	status	id	mag	n_pts	med_dy	med_dz	dr1	dr2	ra	dec	mean_y	mean_z
0	FID	ACIS-S-2	7.10	1499	-0.041	0.013	0.008	0.014	0.000000	0.000000	-758.40	-1732.48
1	FID	ACIS-S-4	7.20	1499	0.032	0.016	0.009	0.017	0.000000	0.000000	2154.50	175.03
2	FID	ACIS-S-5	7.23	1499	-0.023	-0.020	0.008	0.014	0.000000	0.000000	-1810.00	169.74
3	GUIDE	917386656	7.25	2996	0.015	0.041	0.099	0.162	15.342124	-33.359890	-266.74	-1461.30
4	GUIDE	917389080	10.08	2997	0.119	-0.004	0.376	0.533	15.722484	-33.662555	-1752.17	-928.58
5	GUIDE	917389288	9.58	2931	0.061	0.169	0.133	0.212	15.394706	-33.185862	-156.80	-2098.13
6	GUIDE	917650528	8.72	2997	-0.107	-0.158	0.099	0.151	14.274554	-33.869842	1893.66	1528.88
7	GUIDE	917651768	9.63	2992	-0.061	-0.039	0.146	0.236	14.115744	-33.817552	2404.35	1557.27

2.4 Star Slots

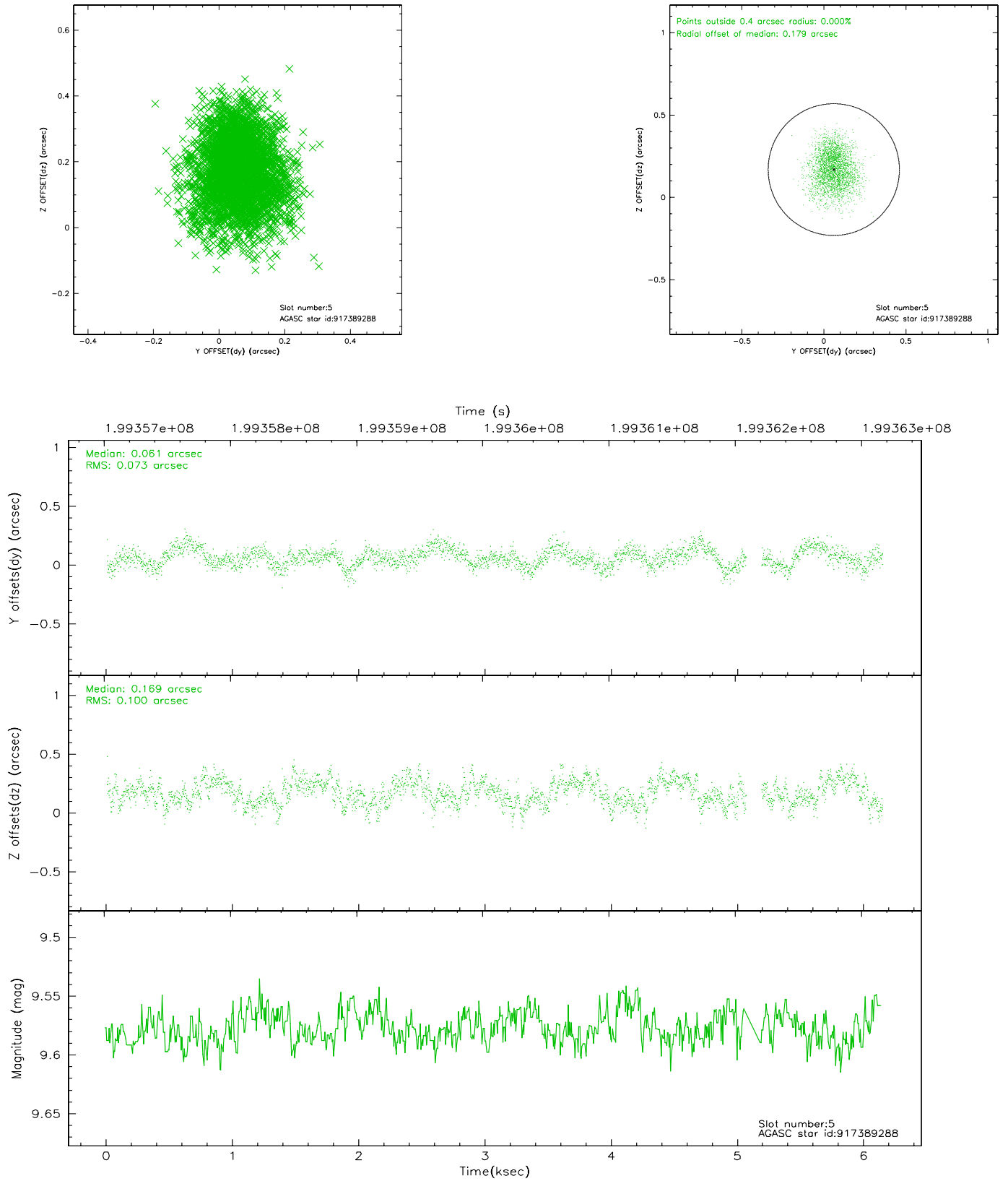
2.4.1 Slot 3



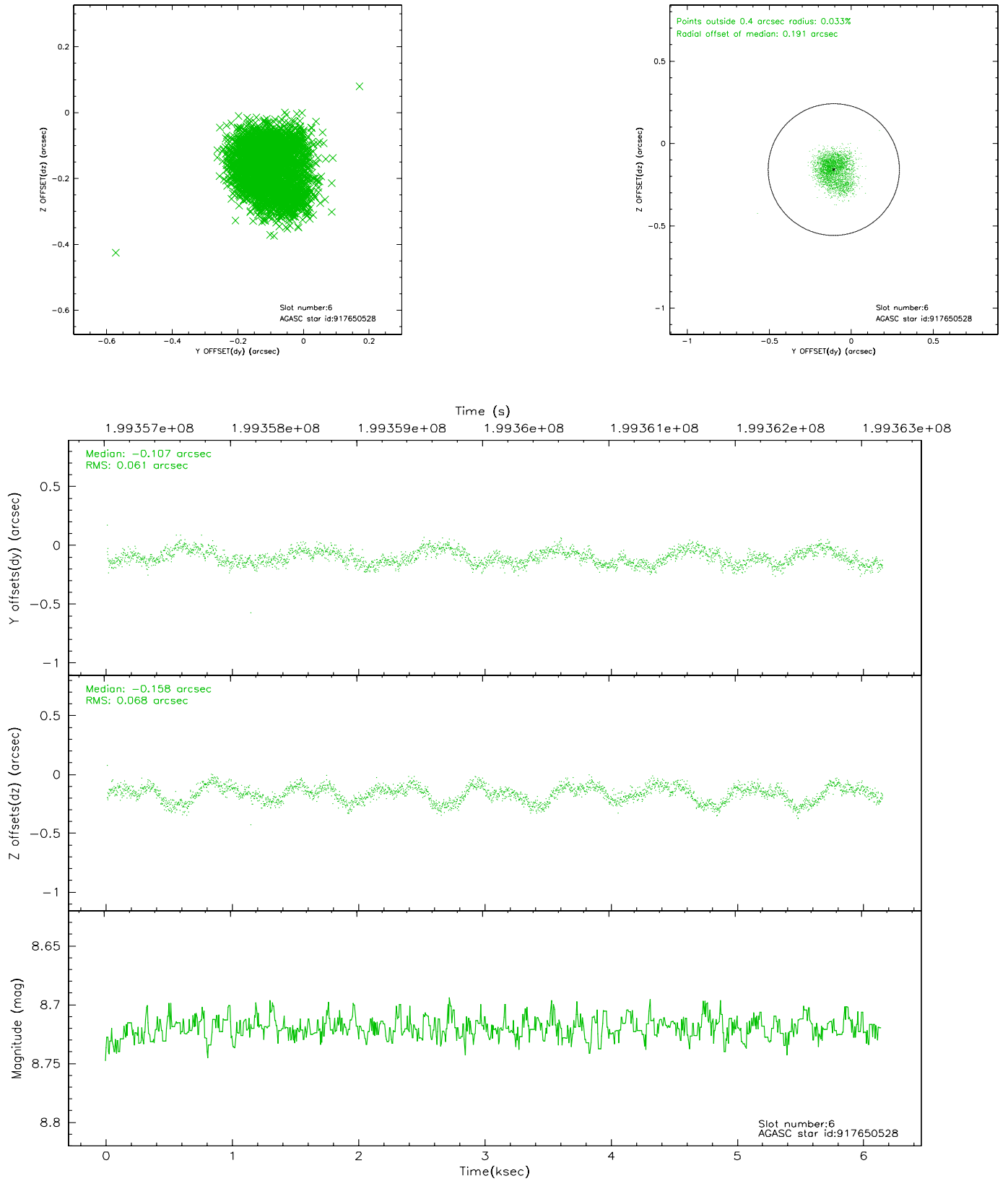
2.4.2 Slot 4



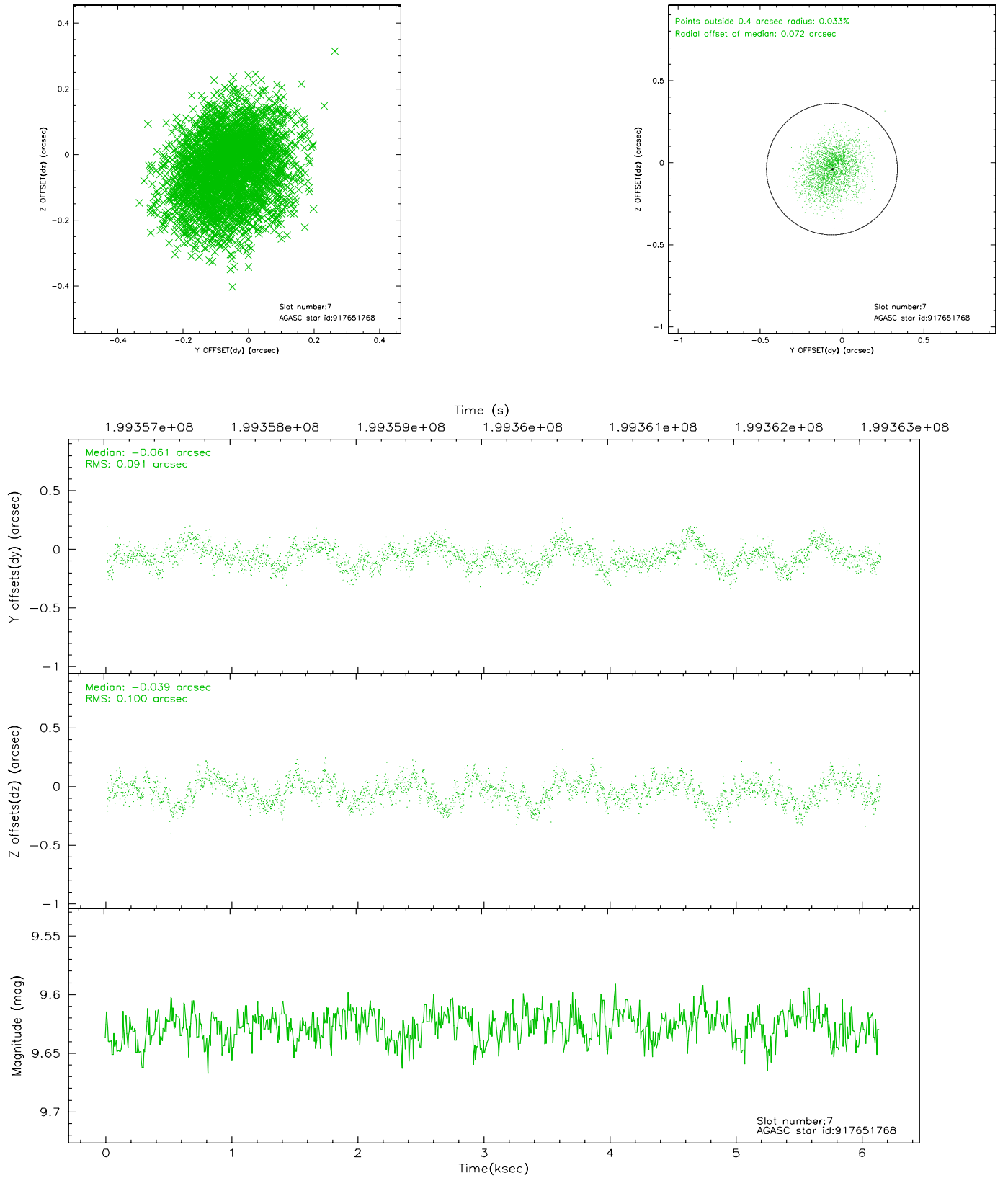
2.4.3 Slot 5



2.4.4 Slot 6

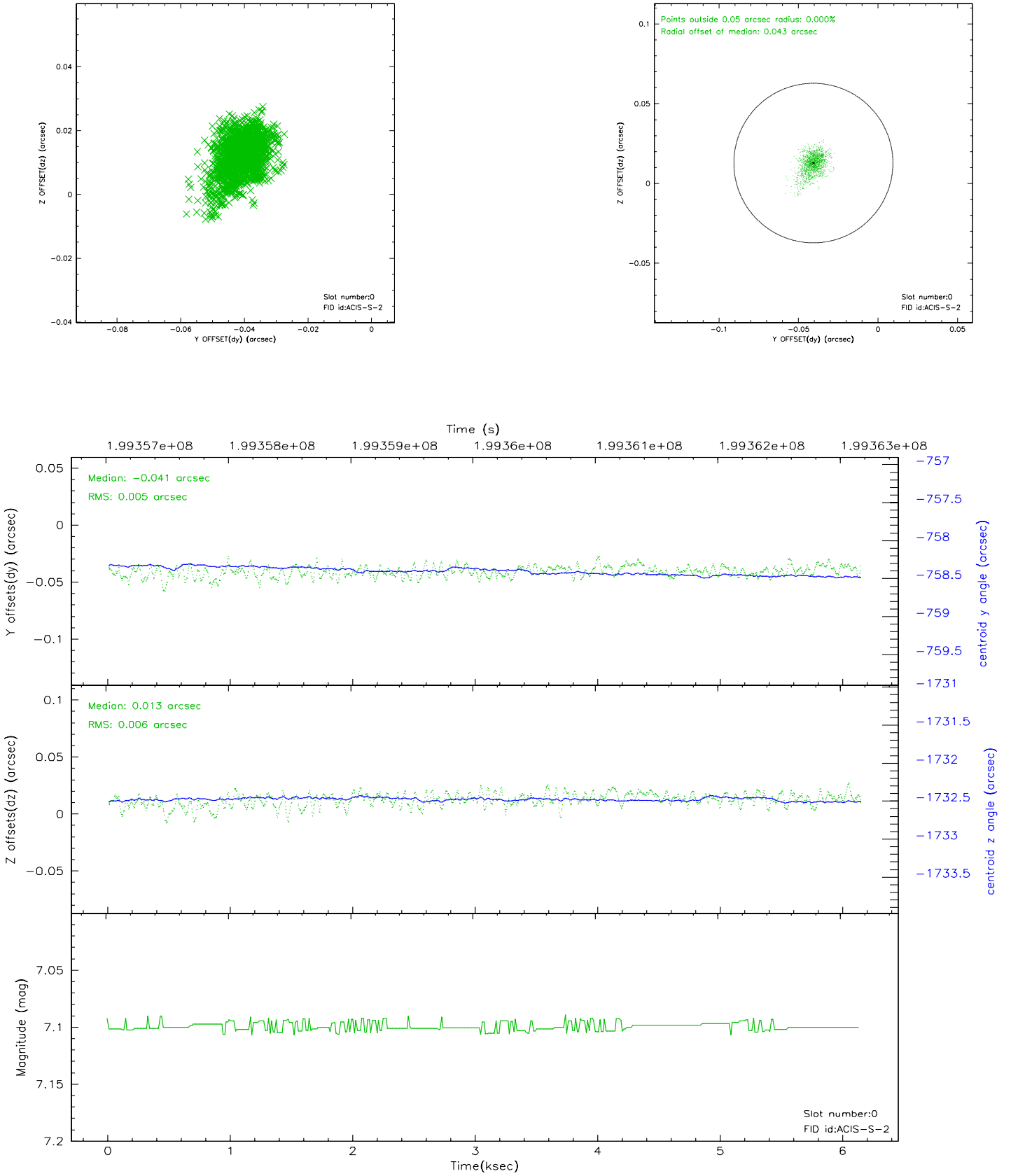


2.4.5 Slot 7

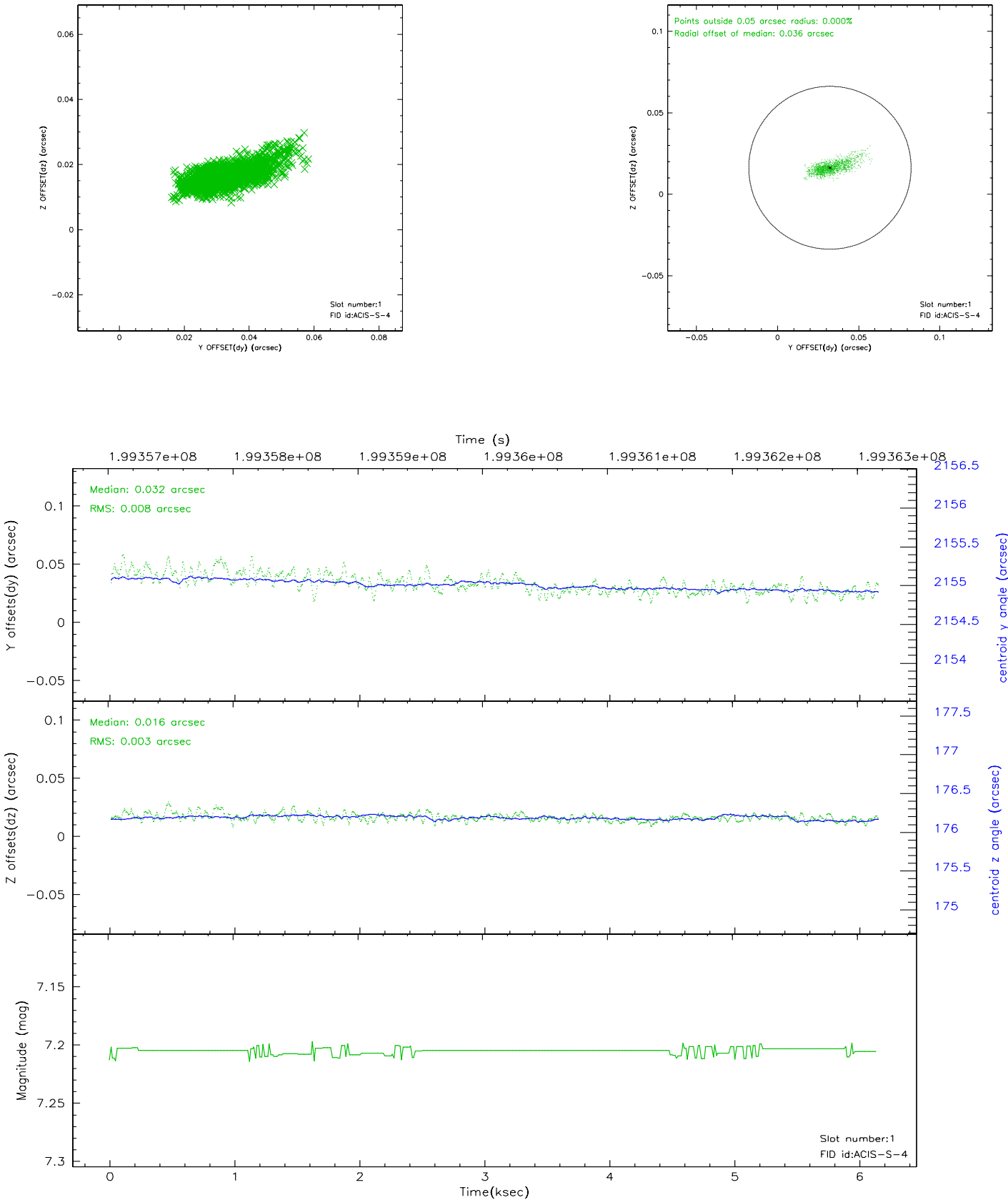


2.5 FID Slots

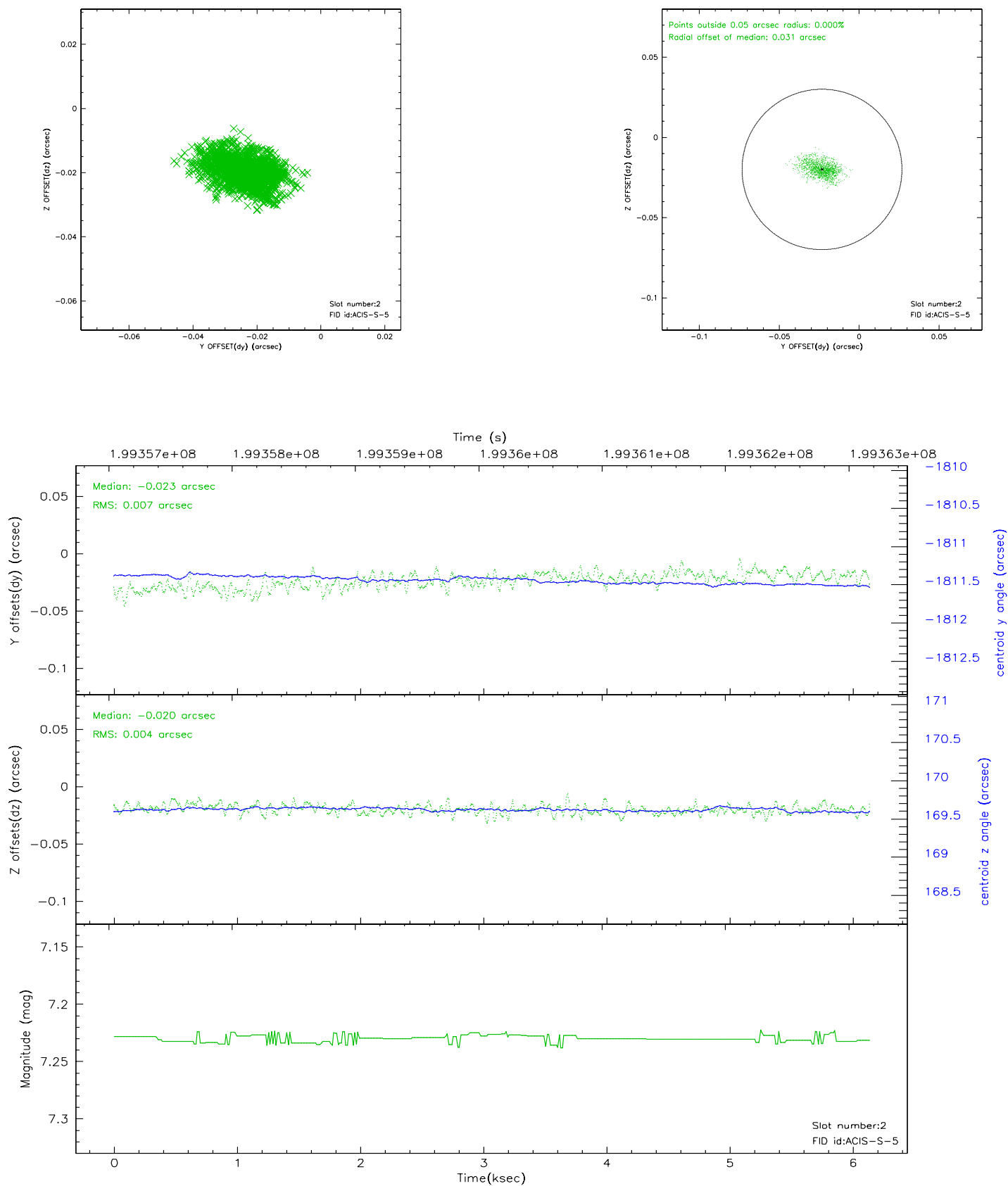
2.5.1 Slot 0



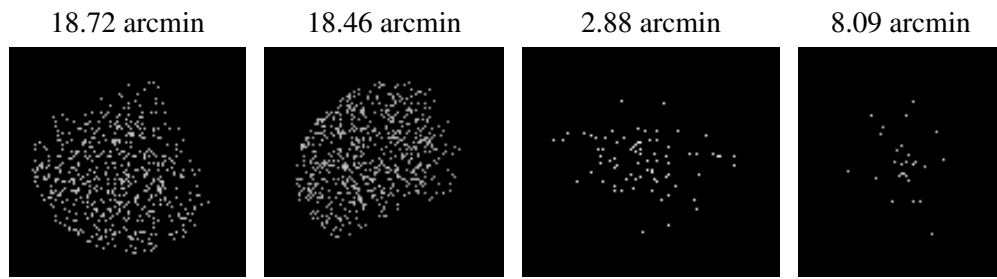
2.5.2 Slot 1



2.5.3 Slot 2



3 Point Sources



A Summary

A.1 Status

V&V Scientist	Joy Nichols
V&V Date (YYYY-MM-DD)	2006.06.05
V&V Edition	1
V&V Disposition and Status	OK
V&V Charge Time	6.137

A.2 Comments

Star in slot 4 has an RMS deviation > 0.200000 arcsec,which is not large enough
to negatively affect the aspect solution.