

# V&V Reference Report

## L2 ASCDS Version : 8.4.5

Observation 4691 - L2 Version 3  
Chandra X-Ray Center

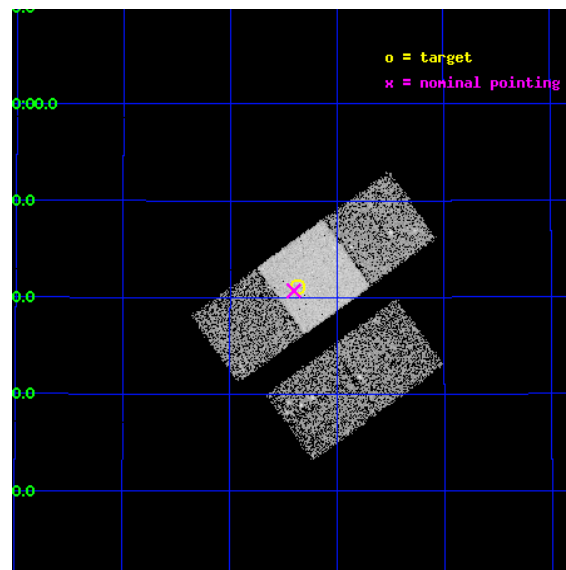
L2 Processing Date : Nov 13 2012

## Contents

<b>1</b>	<b>Front</b>	<b>2</b>
<b>2</b>	<b>OBI</b>	<b>3</b>
2.1	OBI . . . . .	3
2.1.1	Images . . . . .	3
2.1.2	Bias . . . . .	3
2.1.3	Parameters . . . . .	4
2.1.4	Events . . . . .	4
2.2	Compared Parameters . . . . .	5
2.3	Aspect . . . . .	6
2.4	Star Slots . . . . .	9
2.4.1	Slot 3 . . . . .	9
2.4.2	Slot 4 . . . . .	10
2.4.3	Slot 5 . . . . .	11
2.4.4	Slot 6 . . . . .	12
2.4.5	Slot 7 . . . . .	13
2.5	FID Slots . . . . .	14
2.5.1	Slot 0 . . . . .	14
2.5.2	Slot 1 . . . . .	15
2.5.3	Slot 2 . . . . .	16
<b>A</b>	<b>Summary</b>	<b>17</b>
A.1	Status . . . . .	17
A.2	Comments . . . . .	17

# 1 Front

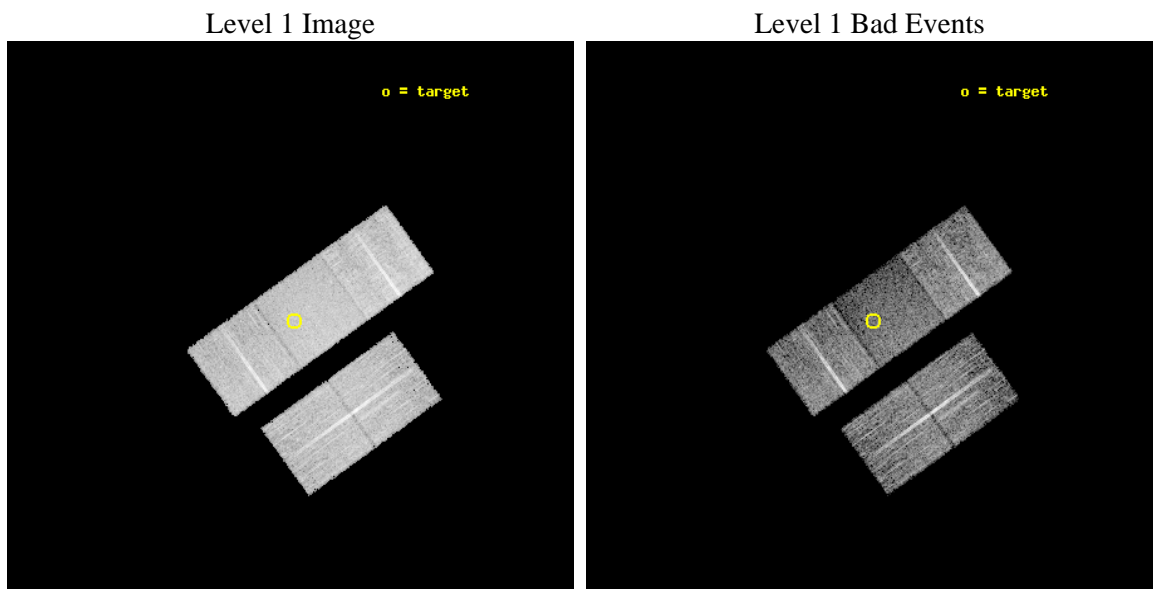
seq_num	600346	Sequence number
obs_id	4691	Observation id
title	Physics of Accretion Flows in Ultra-low Luminosity AGNs: A Mini Survey of a Distance-Limited Sample of Inactive Galaxies	Proposal tit
observer	Dr. Yuichi Terashima	Principal investigator
object	NGC 205	Source name
dtcycle	0	&#160
cycle	P	events from which exps? Prim/Second/Both
ra_targ	10.091667	Observer's specified target RA [deg]
dec_targ	41.685278	Observer's specified target Dec [deg]
ra_nom	10.100710015091	Nominal RA [deg]
dec_nom	41.678355455786	Nominal Dec [deg]
roll_nom	324.22967063549	Nominal Roll [deg]
revision	3	Processing version of data
ontime	9997.213209033	Sum of GTIs [s]
livetime	9866.5922586157	Livetime [s]
ontime2	9975.2264373899	Sum of GTIs [s]
ontime3	9987.7902187109	Sum of GTIs [s]
ontime6	9987.7903183401	Sum of GTIs [s]
ontime7	9997.213209033	Sum of GTIs [s]
ontime8	9987.7903082669	Sum of GTIs [s]
l2events	47840	Number of level 2 events



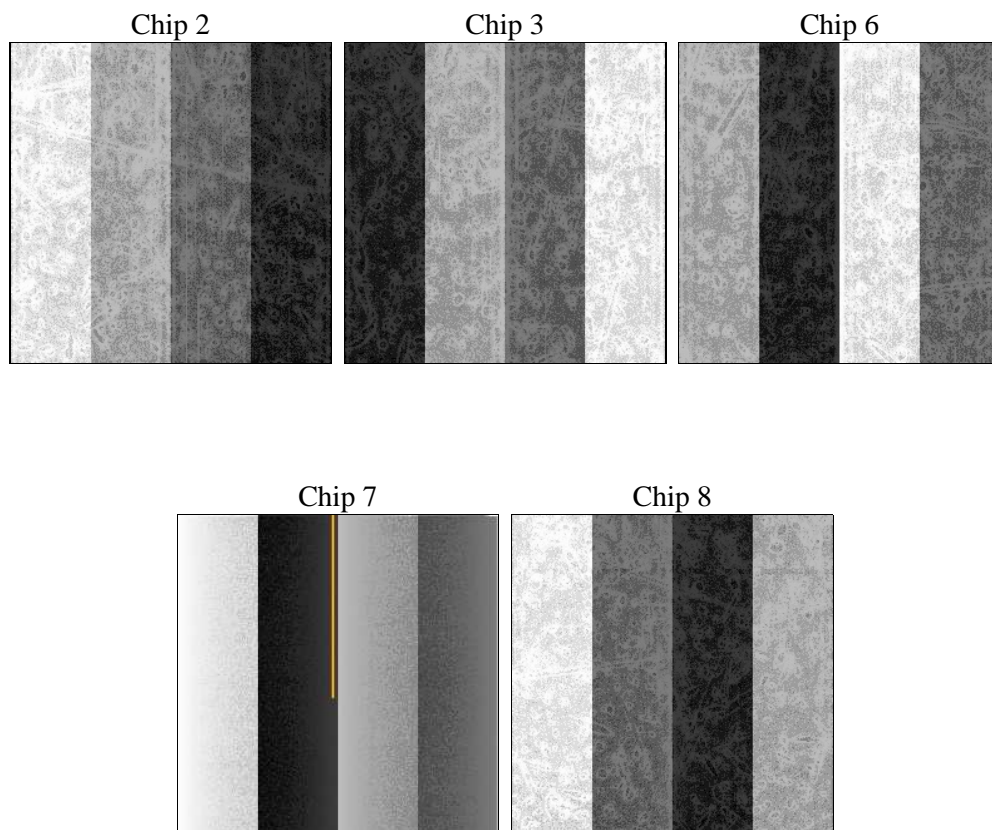
## 2 OBI

### 2.1 OBI

#### 2.1.1 Images



#### 2.1.2 Bias



### 2.1.3 Parameters

obi_num	0	Obi number	sched_exp_time	10250.000000	[s] Scheduled observation exposure time
ascdsver	8.4.5	Processing system revision	ontime	9997.213209033	Sum of GTIs [s]
caldsver	4.5.2	&#160	ontime2	9975.2264373899	Sum of GTIs [s]
date	2012-11-13T16:54:41	Date and time of file creation	ontime3	9987.7902187109	Sum of GTIs [s]
revision	3	Processing version of data	ontime6	9987.7903183401	Sum of GTIs [s]
			ontime7	9997.213209033	Sum of GTIs [s]
			ontime8	9987.7903082669	Sum of GTIs [s]
			l1events	303764	Number of level 1 events

### 2.1.4 Events

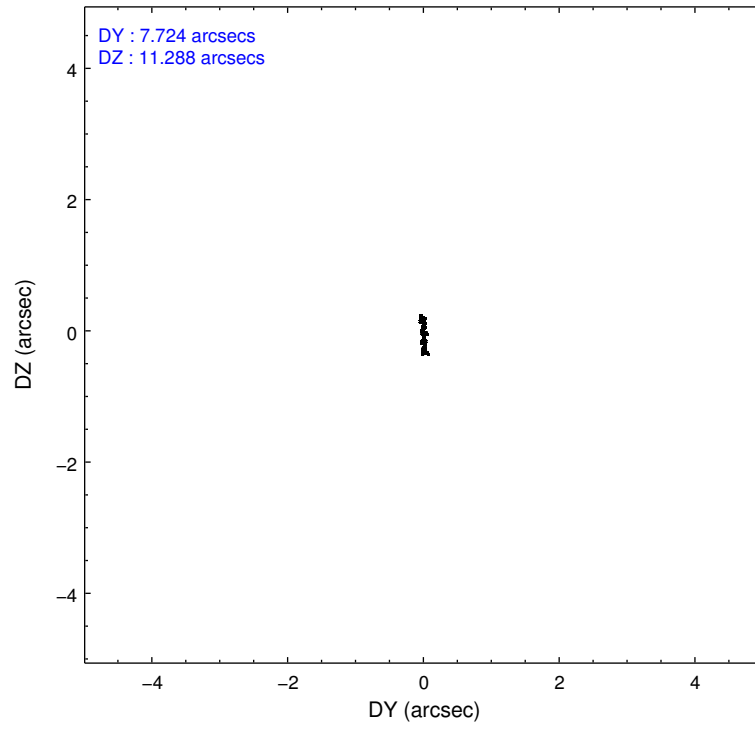
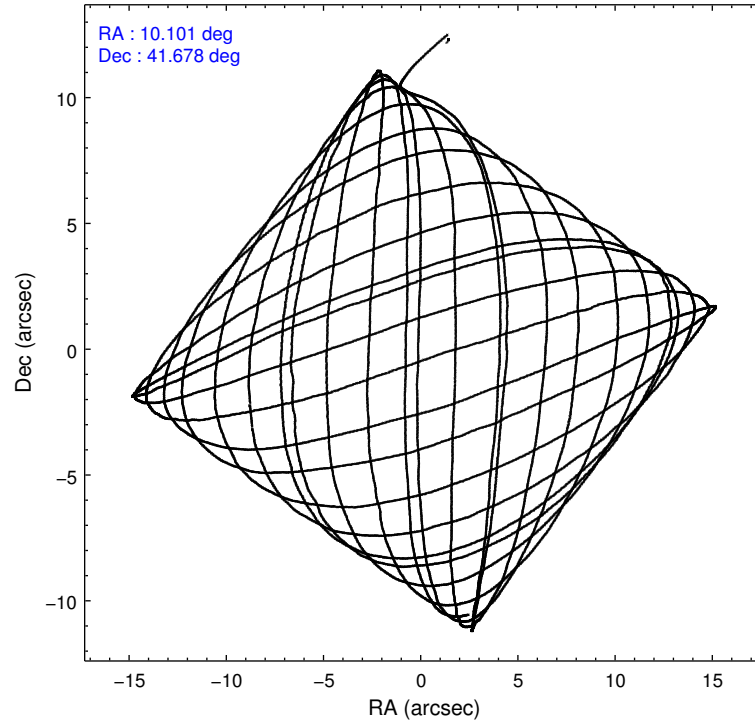
	ccd 2	ccd 3	ccd 6	ccd 7	ccd 8
level 1 events	56111	55270	57261	61463	73659
rejected events	50484	50124	51356	33470	57551
rejected %	89%	90%	89%	54%	78%

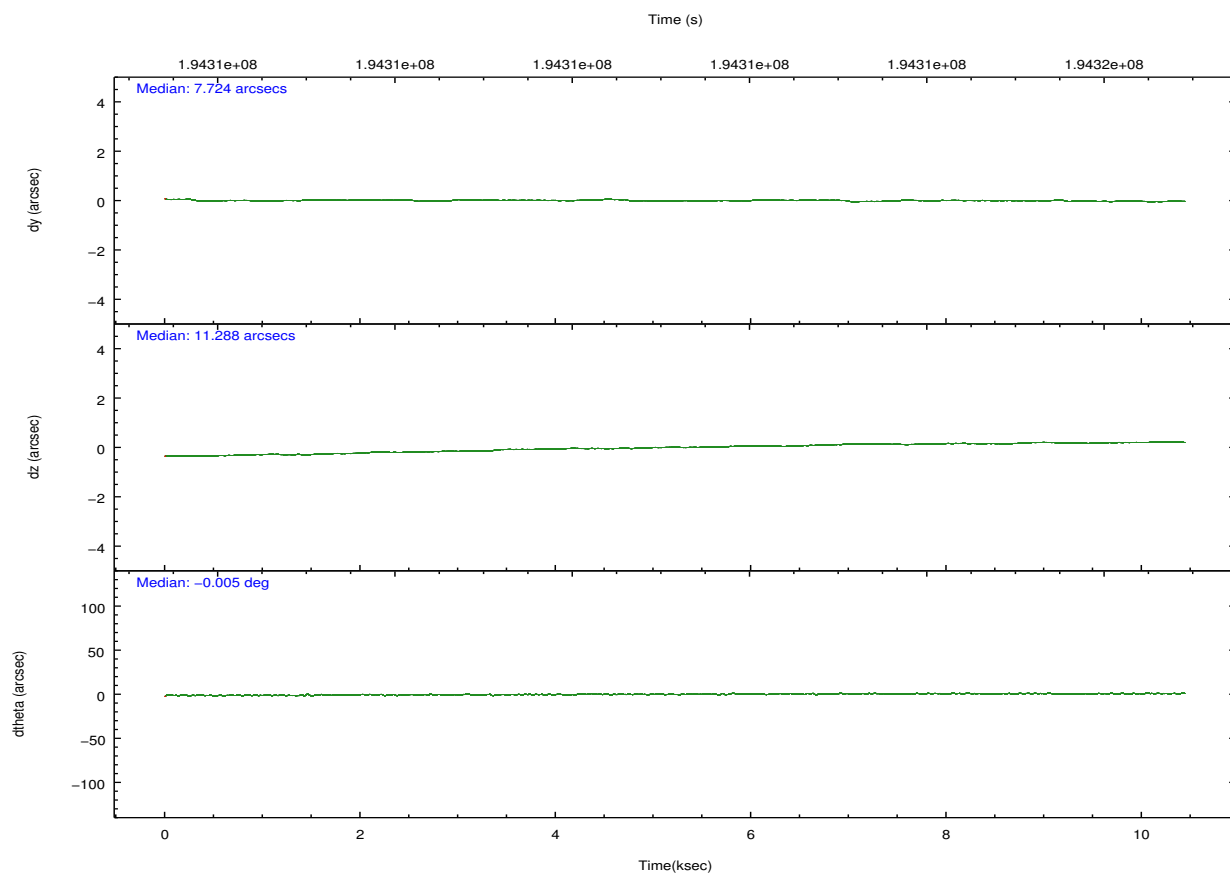
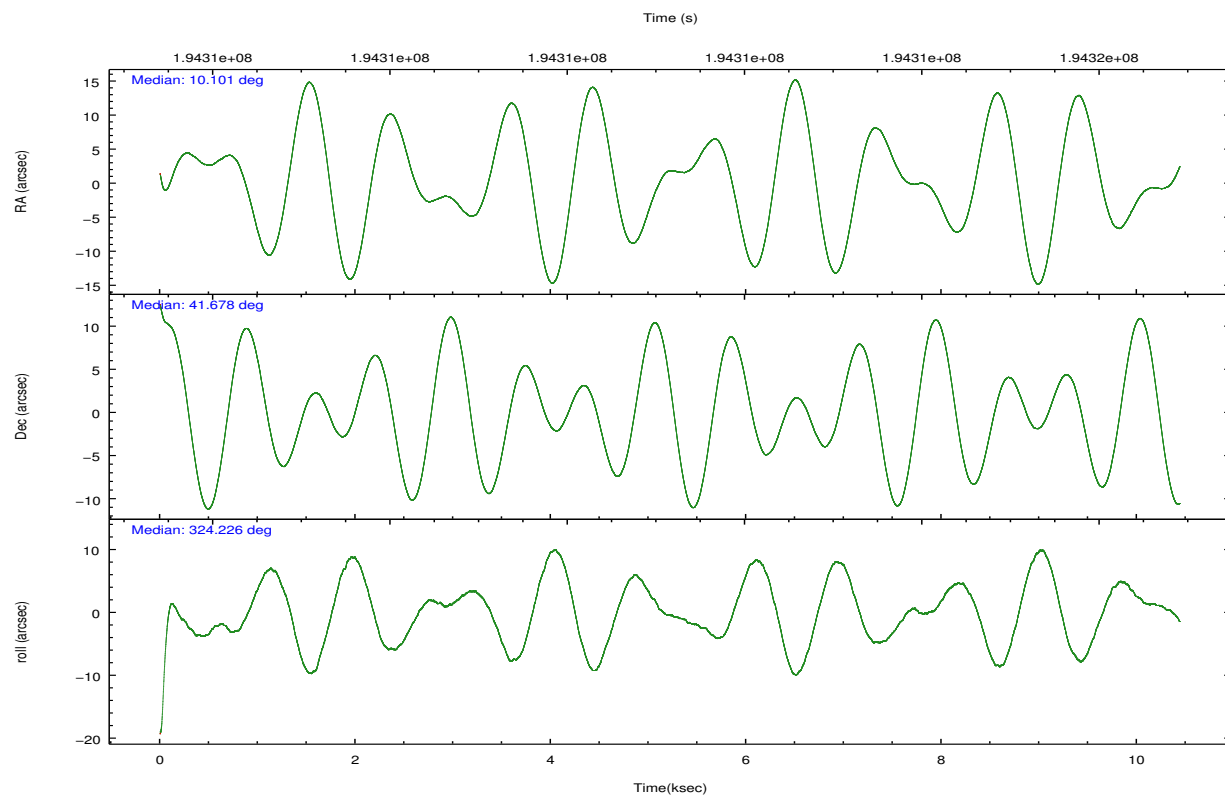
	ccd 2	ccd 3	ccd 6	ccd 7	ccd 8
grade 0 events	2145	1858	2102	2525	5232
	3%	3%	3%	4%	7%
grade 1 events	26	27	33	42	50
	0%	0%	0%	0%	0%
grade 2 events	1266	1109	1240	5696	3399
	2%	2%	2%	9%	4%
grade 3 events	625	611	653	2719	1789
	1%	1%	1%	4%	2%
grade 4 events	638	616	664	2610	1688
	1%	1%	1%	4%	2%
grade 5 events	1900	2178	2271	6502	3119
	3%	3%	3%	10%	4%
grade 6 events	964	956	1248	14469	4013
	1%	1%	2%	23%	5%
grade 7 events	48547	47915	49050	26900	54369
	86%	86%	85%	43%	73%

## 2.2 Compared Parameters

Parameter	Planned	Actual	Parameter	Planned	Actual
Instrument	ACIS	ACIS	Obspar format version number	7	7
Detector	ACIS-23678	ACIS-23678	Obspar file type	PREDICTED	ACTUAL
Grating	NONE	NONE	Obspar update status	NONE	UPDATED
Data mode	VFAINT	VFAINT	Number of optional ACIS chips dropped	0	0
Observation mode	POINTING	POINTING	On-chip summing requested	N	N
[deg] Pointing RA	10.064368	10.10071001509118	Subarray requested	NONE	NONE
[deg] Pointing Dec	41.680706	41.67835545578649	Alternating exposures requested	N	N
[deg] Pointing Roll	324.097238	324.2296706354925	[s] Primary exposure time	0.000000	3.1
[mm] SIM focus pos	-0.684267	-0.6828225247311905			
[mm] SIM defocus	0	0.001444936568705701			
[mm] SIM translation stage pos	-190.132523	-190.1400660498719			
[mm] SIM translation stage offset	0	0.00754346686406393			
[s] Observation start time (MET)	194306132.184000	194305404.90389			
Observation start date	2004-02-27T21:54:28	2004-02-27T21:43:24			
[s] Observation end time (MET)	194316382.184000	194317662.36693			
Observation end date	2004-02-28T00:45:18	2004-02-28T01:07:42			
Read mode	TIMED	TIMED			

## 2.3 Aspect



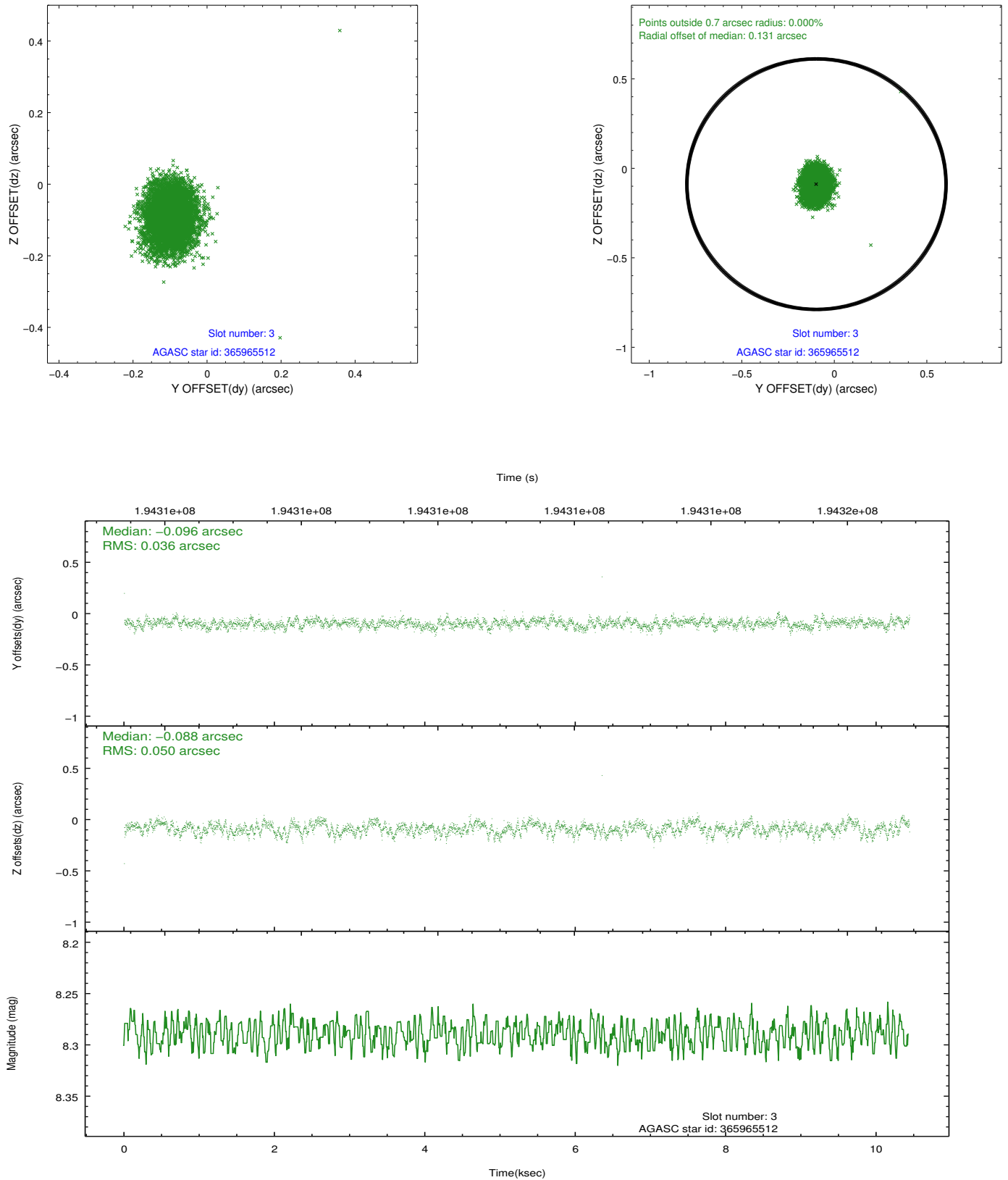


### Slot Statistics

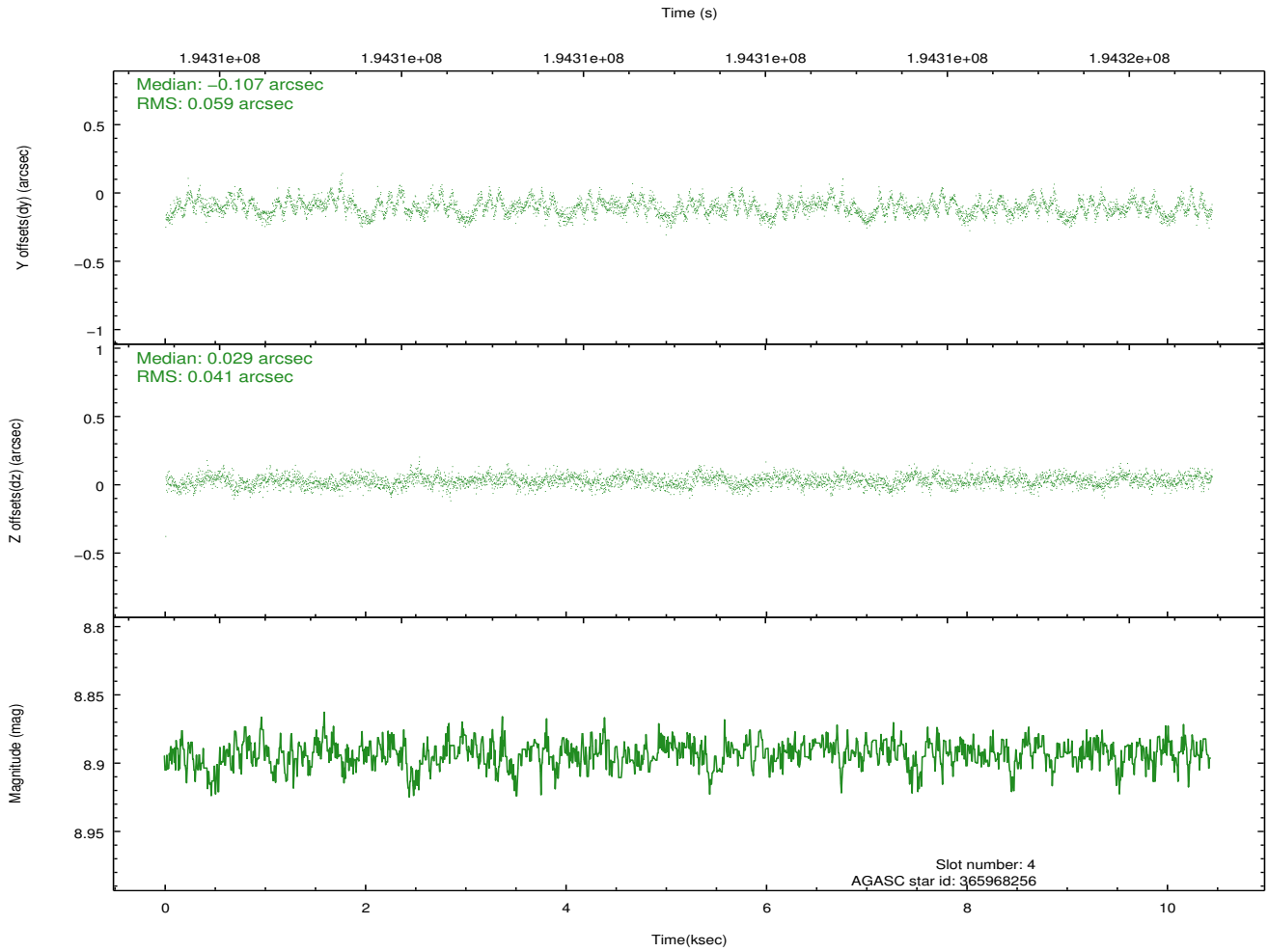
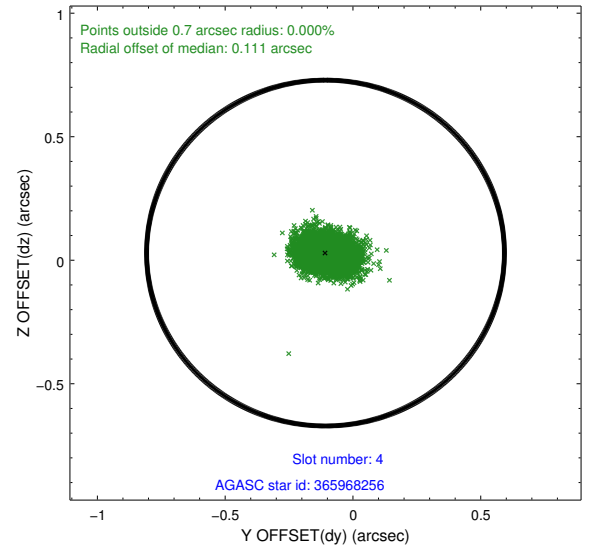
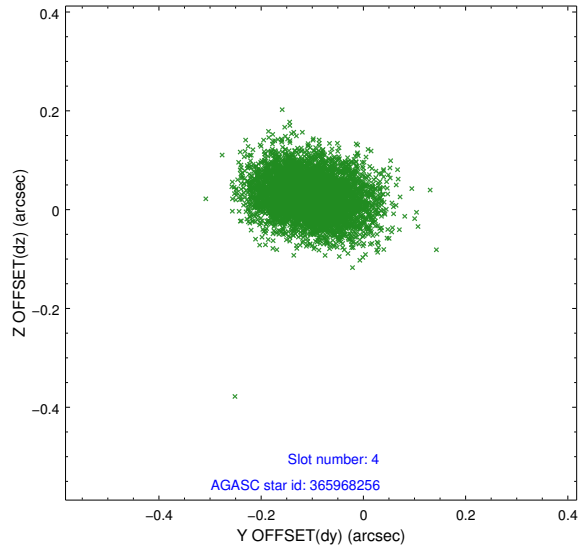
slot	status	id	mag	n_pts	med_dy	med_dz	dr1	dr2	ra	dec	mean_y	mean_z
0	FID	ACIS-S-1	7.19	2523	0.020	-0.078	0.008	0.014	0.000000	0.000000	935.54	-1728.26
1	FID	ACIS-S-4	7.20	2519	0.051	0.049	0.008	0.013	0.000000	0.000000	2153.27	175.49
2	FID	ACIS-S-5	7.23	2523	-0.097	0.042	0.007	0.011	0.000000	0.000000	-1812.78	169.68
3	GUIDE	365965512	8.29	5060	-0.096	-0.088	0.065	0.105	9.391602	41.418521	-921.47	-1824.08
4	GUIDE	365968256	8.89	5060	-0.107	0.029	0.076	0.125	9.948038	42.383555	-1734.60	1867.90
5	GUIDE	367658664	9.59	5052	0.046	0.048	0.091	0.146	10.374070	41.369746	1333.29	-414.35
6	GUIDE	367663272	9.28	5056	0.098	0.006	0.079	0.127	10.656279	41.699429	1246.36	991.74
7	GUIDE	367674552	8.86	5054	0.056	0.010	0.066	0.109	11.016238	41.570845	2300.73	1194.89

## 2.4 Star Slots

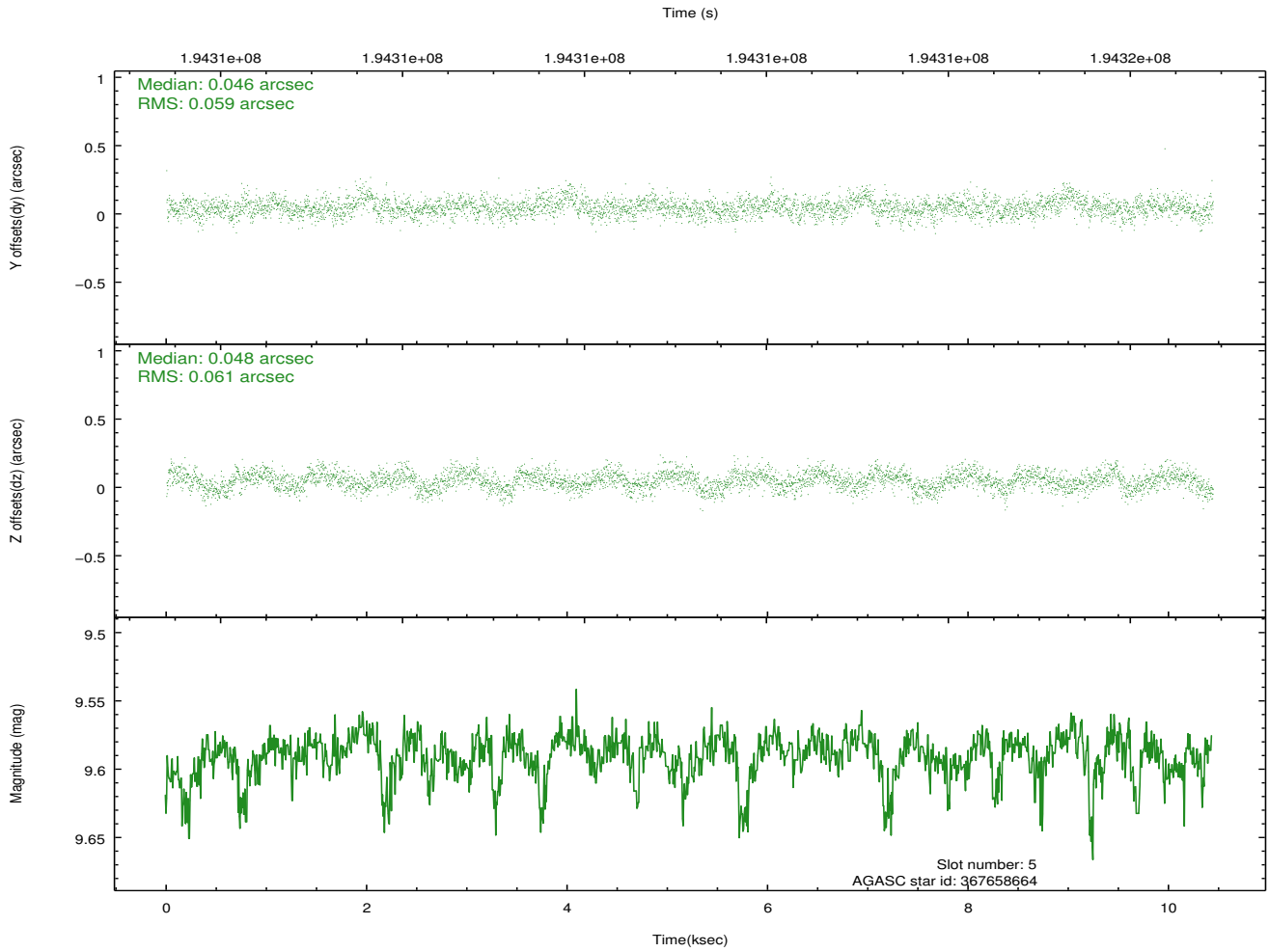
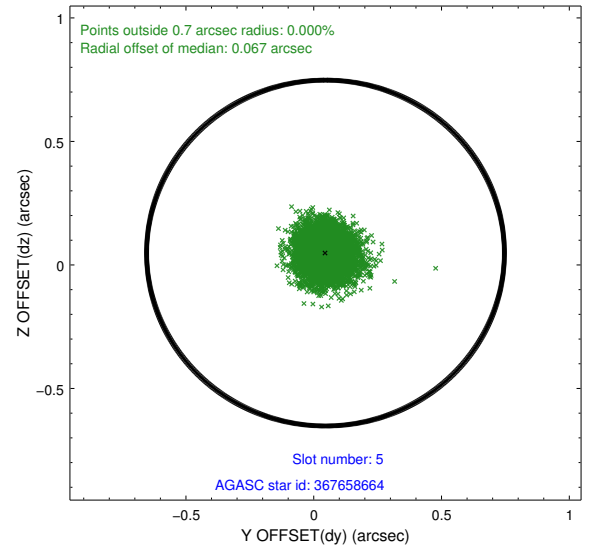
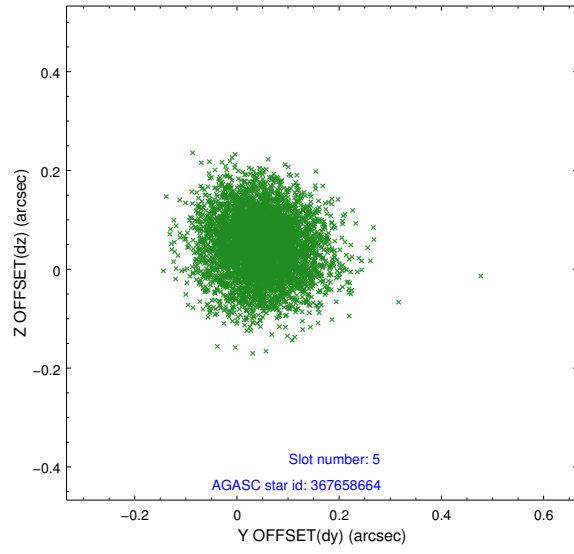
### 2.4.1 Slot 3



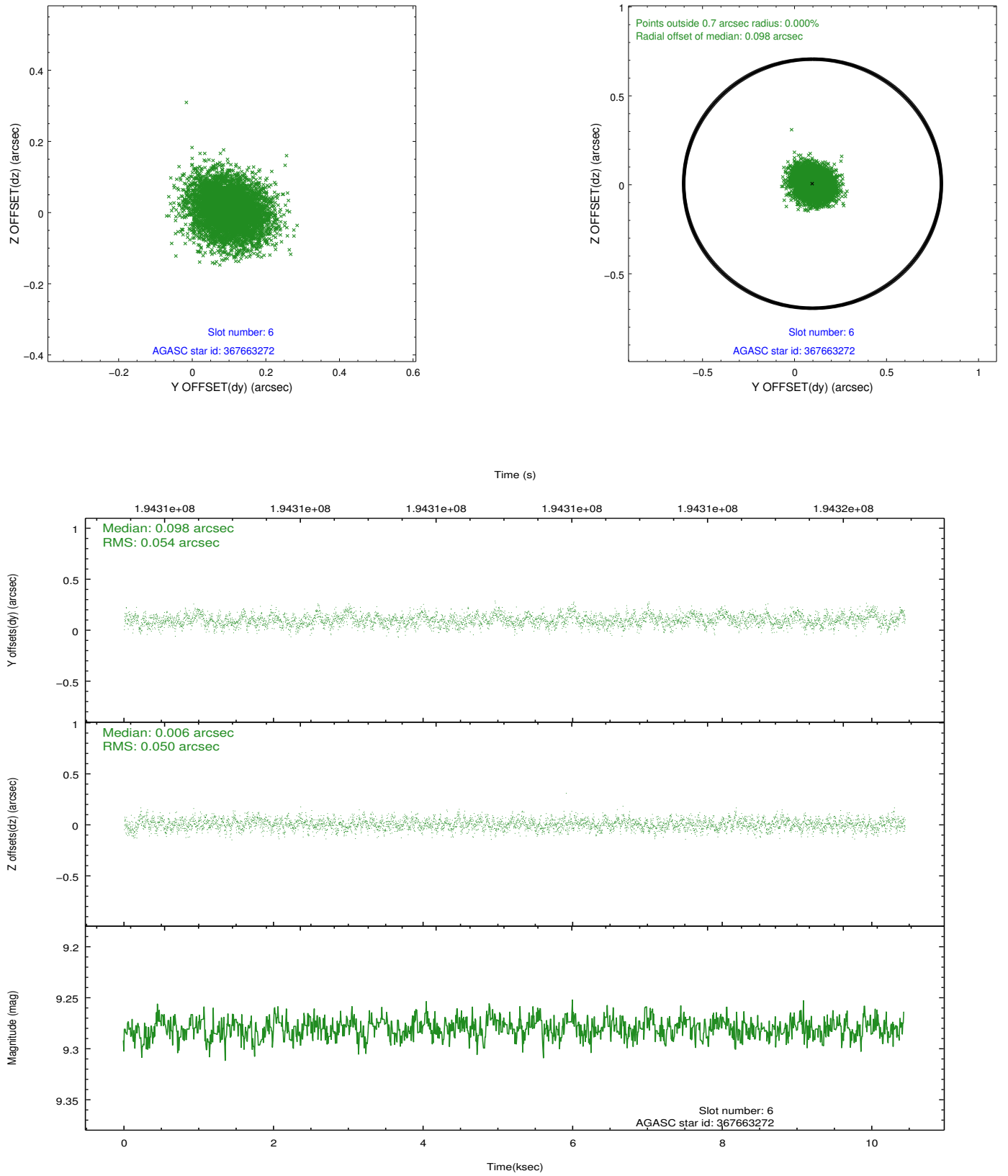
## 2.4.2 Slot 4



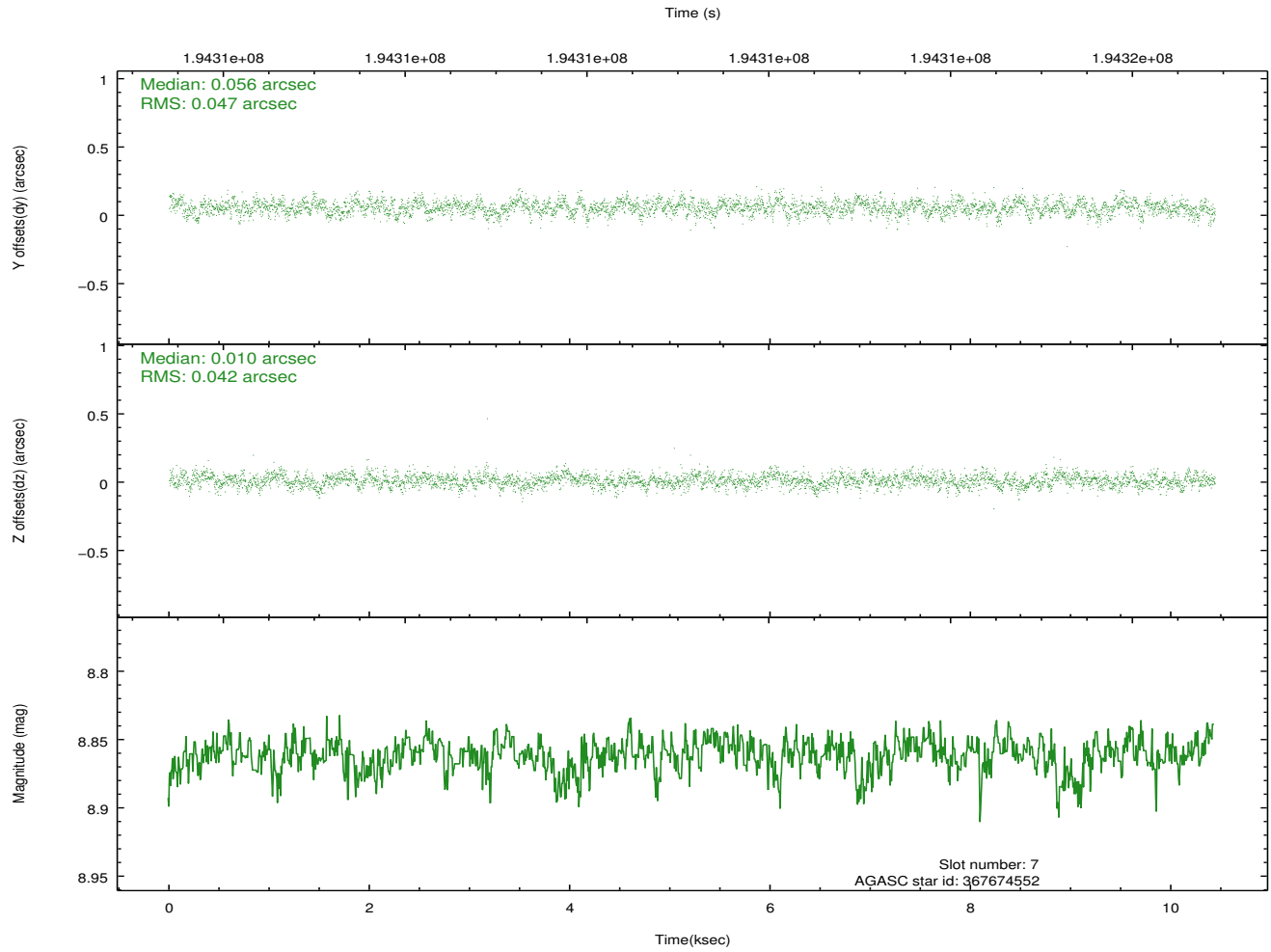
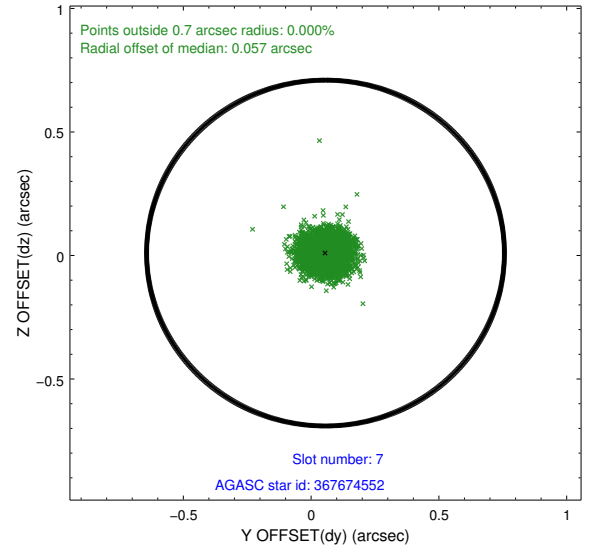
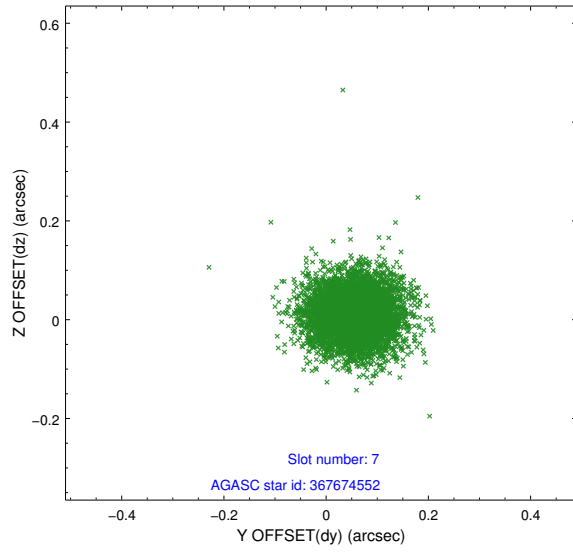
### 2.4.3 Slot 5



## 2.4.4 Slot 6

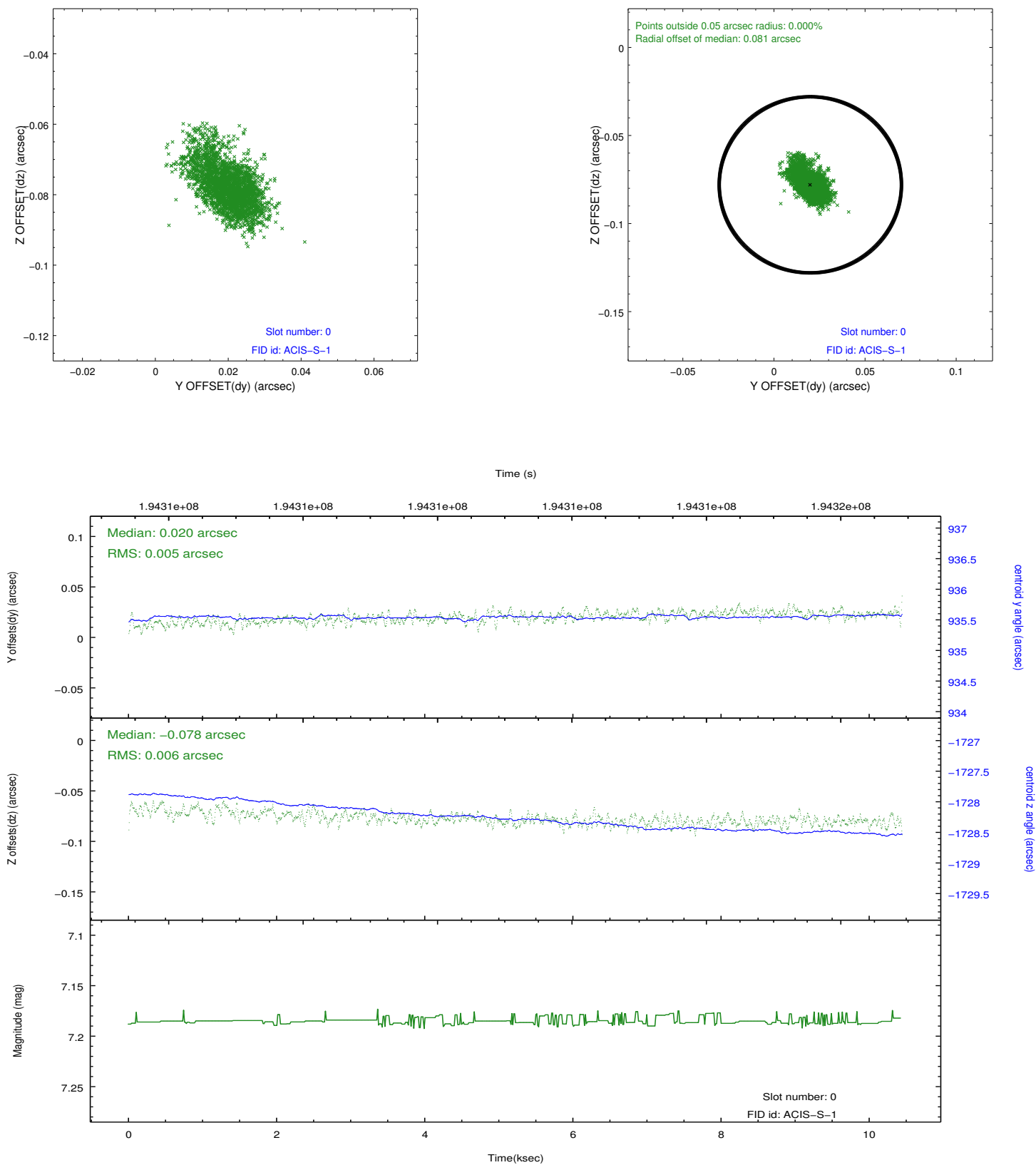


## 2.4.5 Slot 7

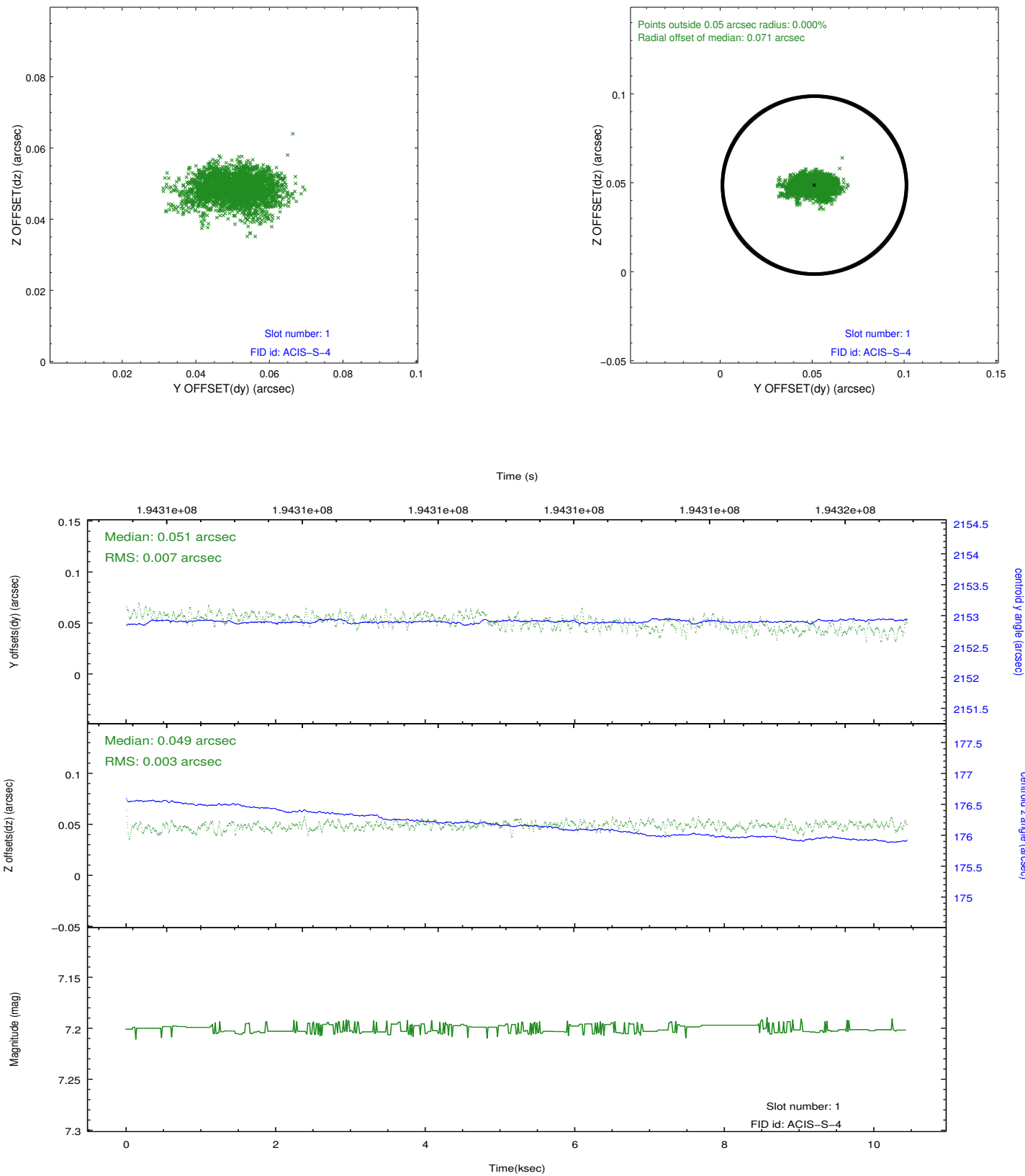


## 2.5 FID Slots

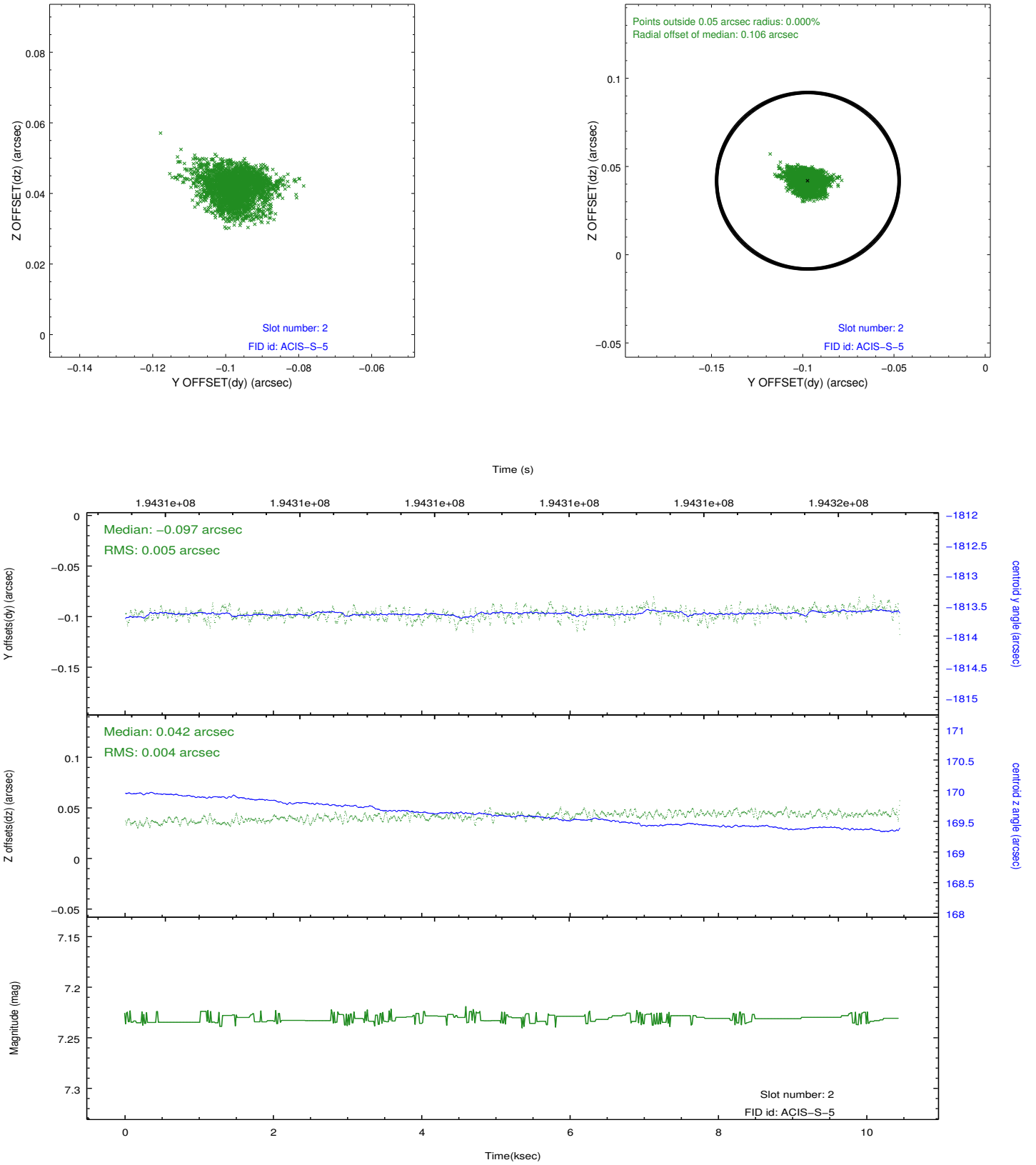
### 2.5.1 Slot 0



## 2.5.2 Slot 1



### 2.5.3 Slot 2



## **A Summary**

### **A.1 Status**

V&V Scientist	Beth Sundheim
V&V Date (YYYY-MM-DD)	2012.12.11
V&V Edition	1
V&V Disposition and Status	OK
V&V Charge Time	10

### **A.2 Comments**