

V&V Reference Report

L2 ASCDS Version : 7.6.7.2

Observation 4689 - L2 Version 001
Chandra X-Ray Center

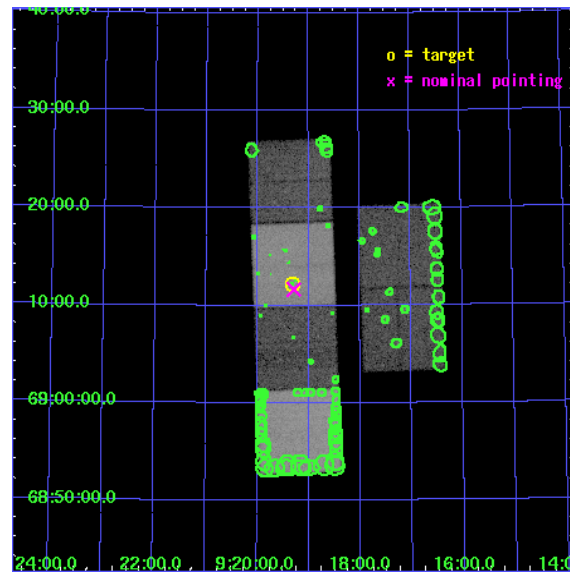
L2 Processing Date : May 18 2006

Contents

1	Front	2
2	OBI	3
2.1	OBI	3
2.1.1	Images	3
2.1.2	Bias	3
2.1.3	Parameters	4
2.1.4	Events	4
2.2	Compared Parameters	5
2.3	Aspect	6
2.4	Star Slots	9
2.4.1	Slot 3	9
2.4.2	Slot 4	10
2.4.3	Slot 5	11
2.4.4	Slot 6	12
2.4.5	Slot 7	13
2.5	FID Slots	14
2.5.1	Slot 0	14
2.5.2	Slot 1	15
2.5.3	Slot 2	16
3	Point Sources	17
A	Summary	18
A.1	Status	18
A.2	Comments	18

1 Front

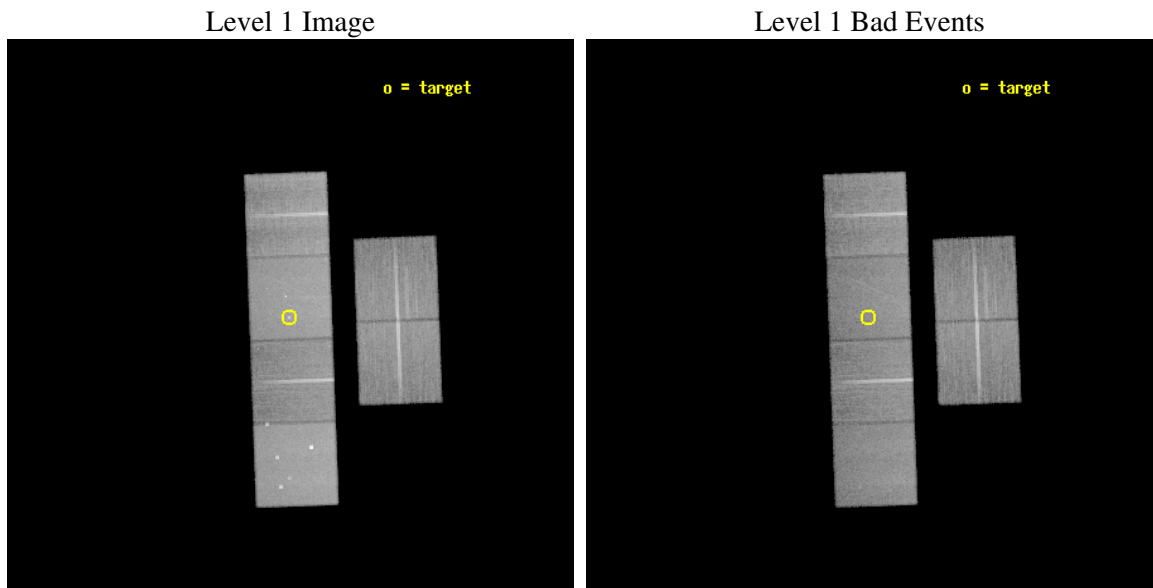
seq_num	600344
obs_id	4689
title	X-ray Census of Supermassive Black Holes: I. New Observations
observer	Dr. Michael Loewenstein
object	NGC 2787
dtcycle	0
cycle	P
ra_targ	139.8275
dec_targ	69.203333
ra_nom	139.8217851659
dec_nom	69.194405414093
roll_nom	267.90087021568
revision	2
ontime	31241.599883616
livetime	30845.999934457
ontime2	31228.635992587
ontime3	31241.599883616
ontime5	31241.599883616
ontime6	31241.599883616
ontime7	31241.599883616
ontime8	31241.599883616
l2events	352492



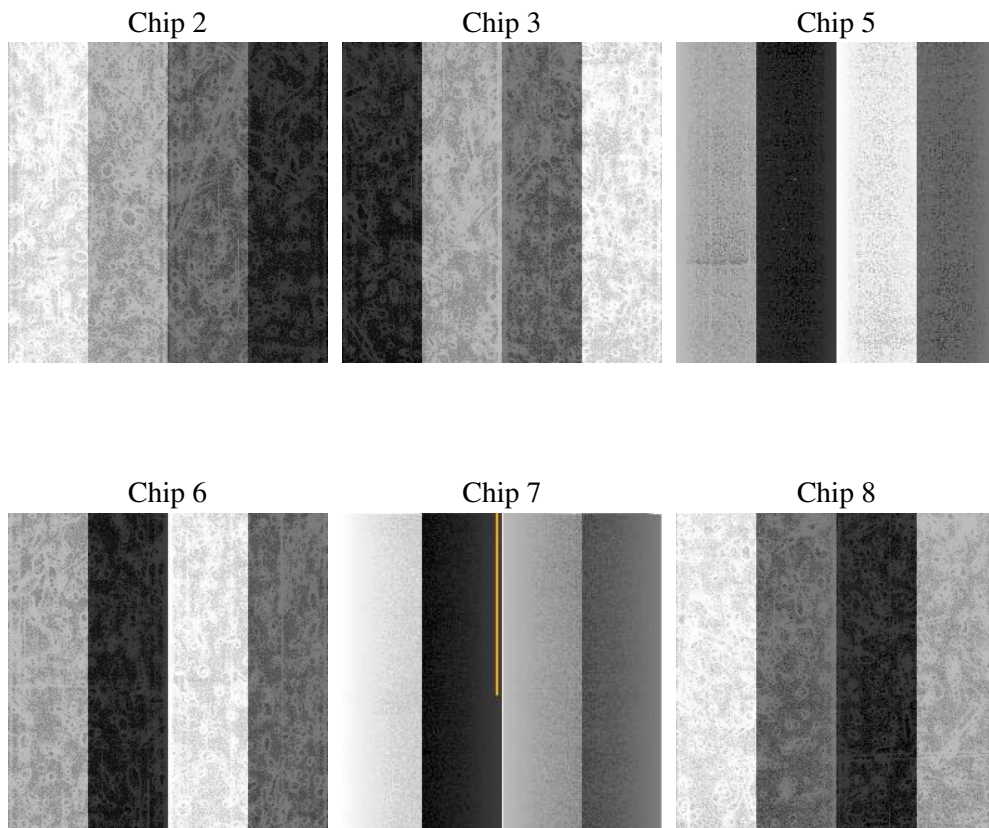
2 OBI

2.1 OBI

2.1.1 Images



2.1.2 Bias



2.1.3 Parameters

obi_num	1
ascdsver	7.6.7.2
caldsver	3.2.2
date	2006-05-18T04:49:15
revision	2

sched_exp_time	31110.000000
ontime	31842.832266688
ontime2	31829.868355751
ontime3	31842.83224678
ontime5	31842.83229658
ontime6	31842.832266688
ontime7	31842.832266688
ontime8	31842.832266688
l1events	1655361

2.1.4 Events

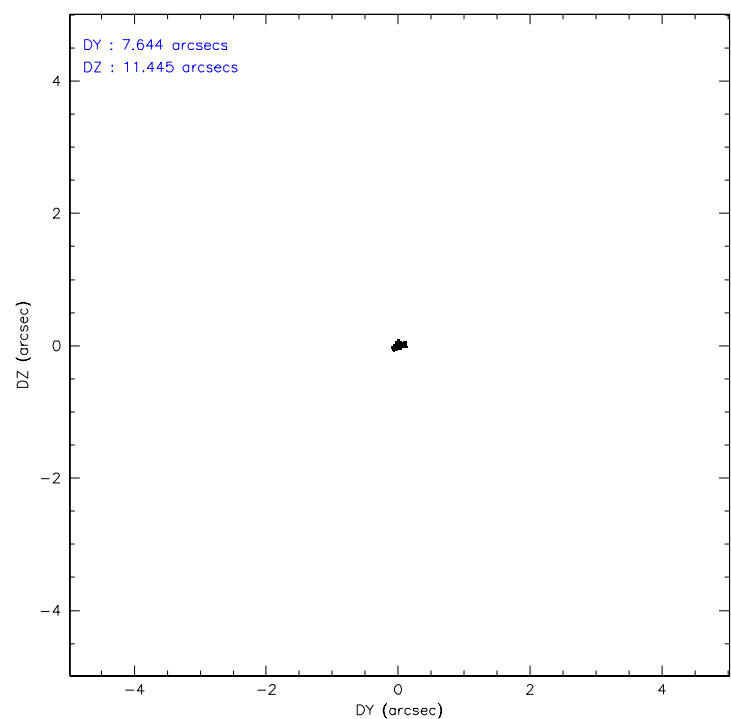
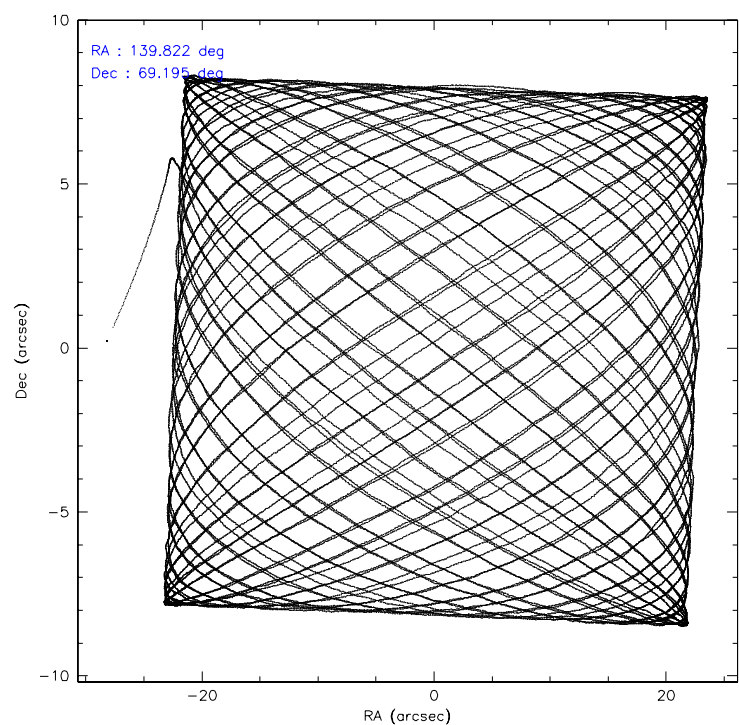
	ccd 2	ccd 3	ccd 5	ccd 6	ccd 7	ccd 8
level 1 events	237254	228100	348450	233803	316792	290962
rejected events	210148	202138	195716	206263	198590	230742
rejected %	88%	88%	56%	88%	62%	79%

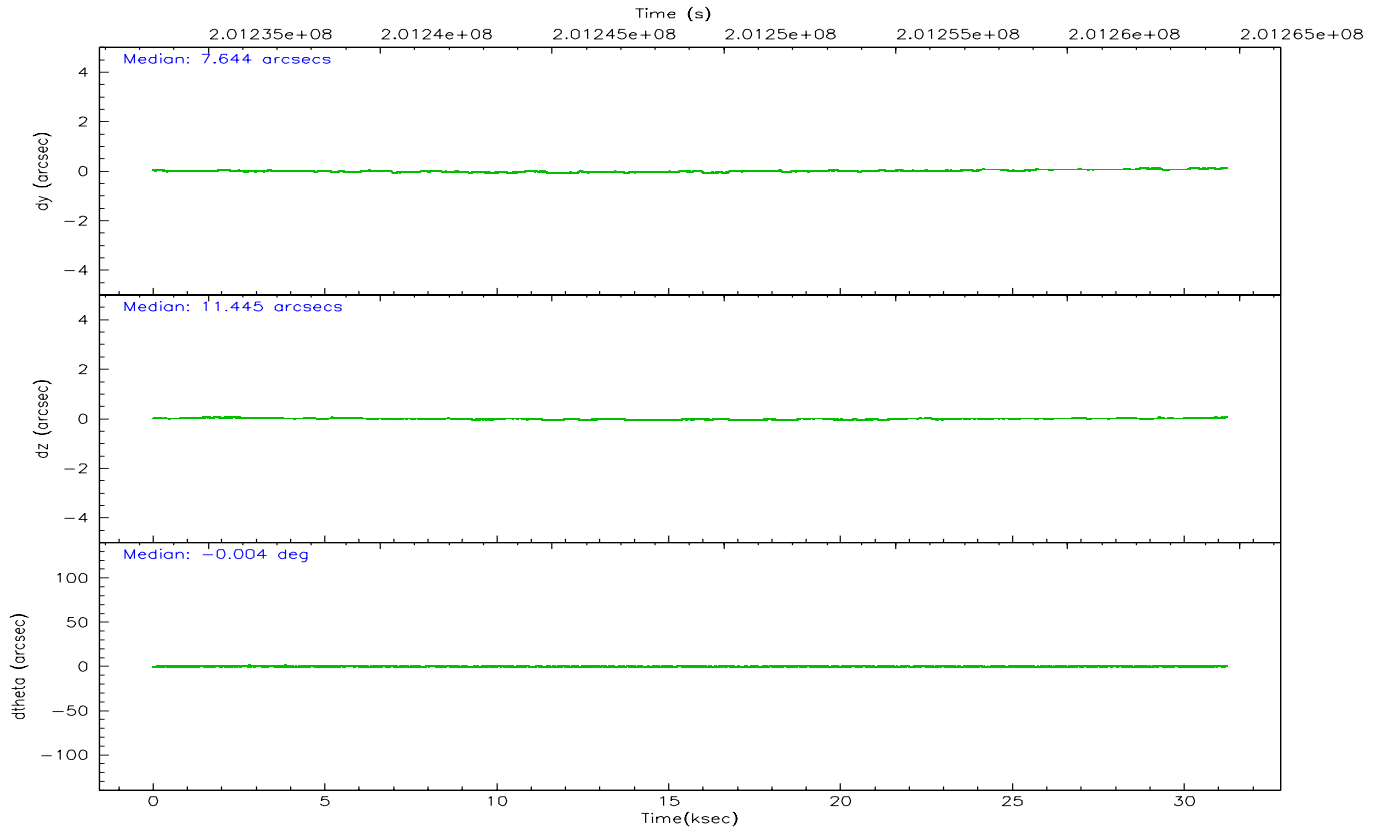
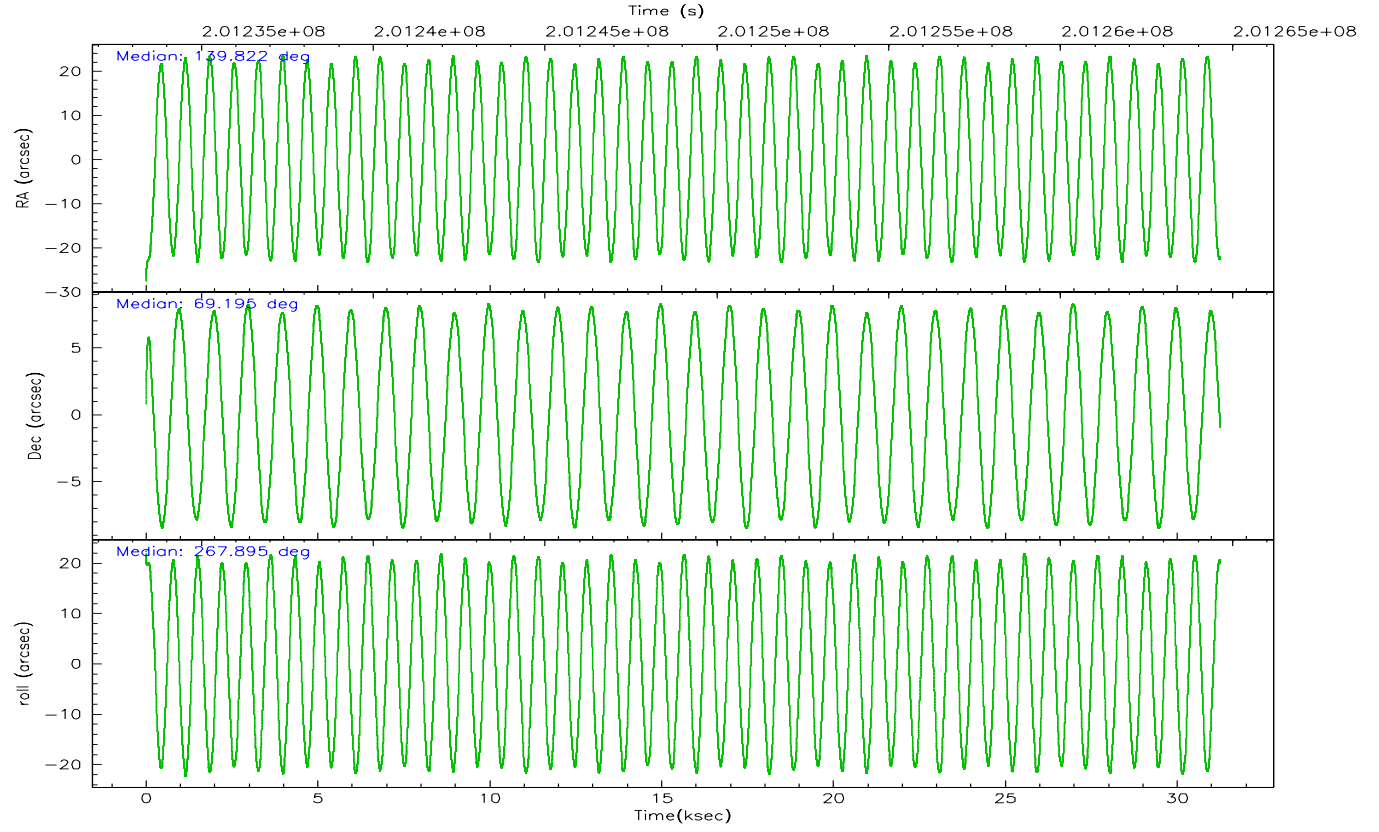
	ccd 2	ccd 3	ccd 5	ccd 6	ccd 7	ccd 8
grade 0 events	12328	11503	14897	11270	7138	19232
	5%	5%	4%	4%	2%	6%
grade 1 events	154	136	287	109	216	216
	0%	0%	0%	0%	0%	0%
grade 2 events	5554	4979	47039	5699	29829	13554
	2%	2%	13%	2%	9%	4%
grade 3 events	2564	2697	3236	2765	6076	6286
	1%	1%	0%	1%	1%	2%
grade 4 events	2650	2555	3060	2700	5769	6071
	1%	1%	0%	1%	1%	2%
grade 5 events	9085	10151	16428	10622	20788	13804
	3%	4%	4%	4%	6%	4%
grade 6 events	4503	4726	87575	5594	71651	16144
	1%	2%	25%	2%	22%	5%
grade 7 events	200416	191353	175928	195044	175325	215655
	84%	83%	50%	83%	55%	74%

2.2 Compared Parameters

Parameter	Planned	Actual	Parameter	Planned	Actual
Instrument	ACIS	ACIS	Obspar format version number	6	6
Detector	ACIS-235678	ACIS-235678	Obspar file type	PREDICTED	ACTUAL
Grating	NONE	NONE	Obspar update status	NONE	UPDATED
Data mode	VFAINT	VFAINT	On-chip summing requested	N	N
Observation mode	POINTING	POINTING	Subarray requested	NONE	NONE
Pointing RA	139.784989	139.8217851659003	Alternating exposures requested	N	N
Pointing Dec	69.218270	69.19440541409314	Primary exposure time	0.000000	3.2
Pointing Roll	267.778648	267.9008702156766			
SIM focus pos (mm)	-0.684267	-0.6828225247311905			
SIM defocus (mm)	0	0.001444936568705701			
SIM translation stage pos (mm)	-190.132523	-190.1425803651734			
SIM translation stage offset (mm)	0	0.01005778216563158			
Observation start time	201233529.184000	201232184.0336			
Observation start date	2004-05-18T02:11:05	2004-05-18T01:49:44			
Observation end time	201264639.184000	201265404.28507			
Observation end date	2004-05-18T10:49:35	2004-05-18T11:03:24			
Read mode	TIMED	TIMED			

2.3 Aspect



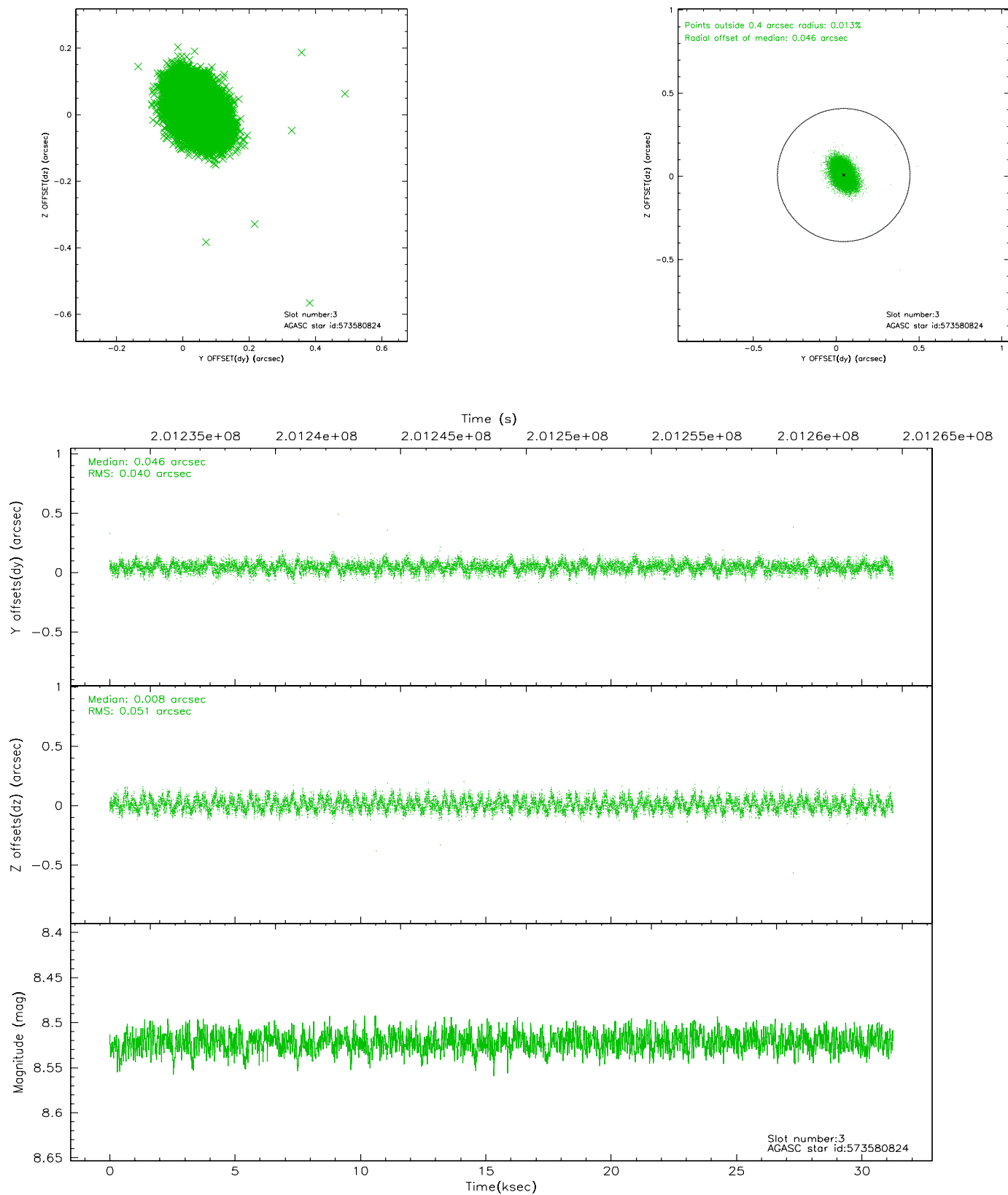


Slot Statistics

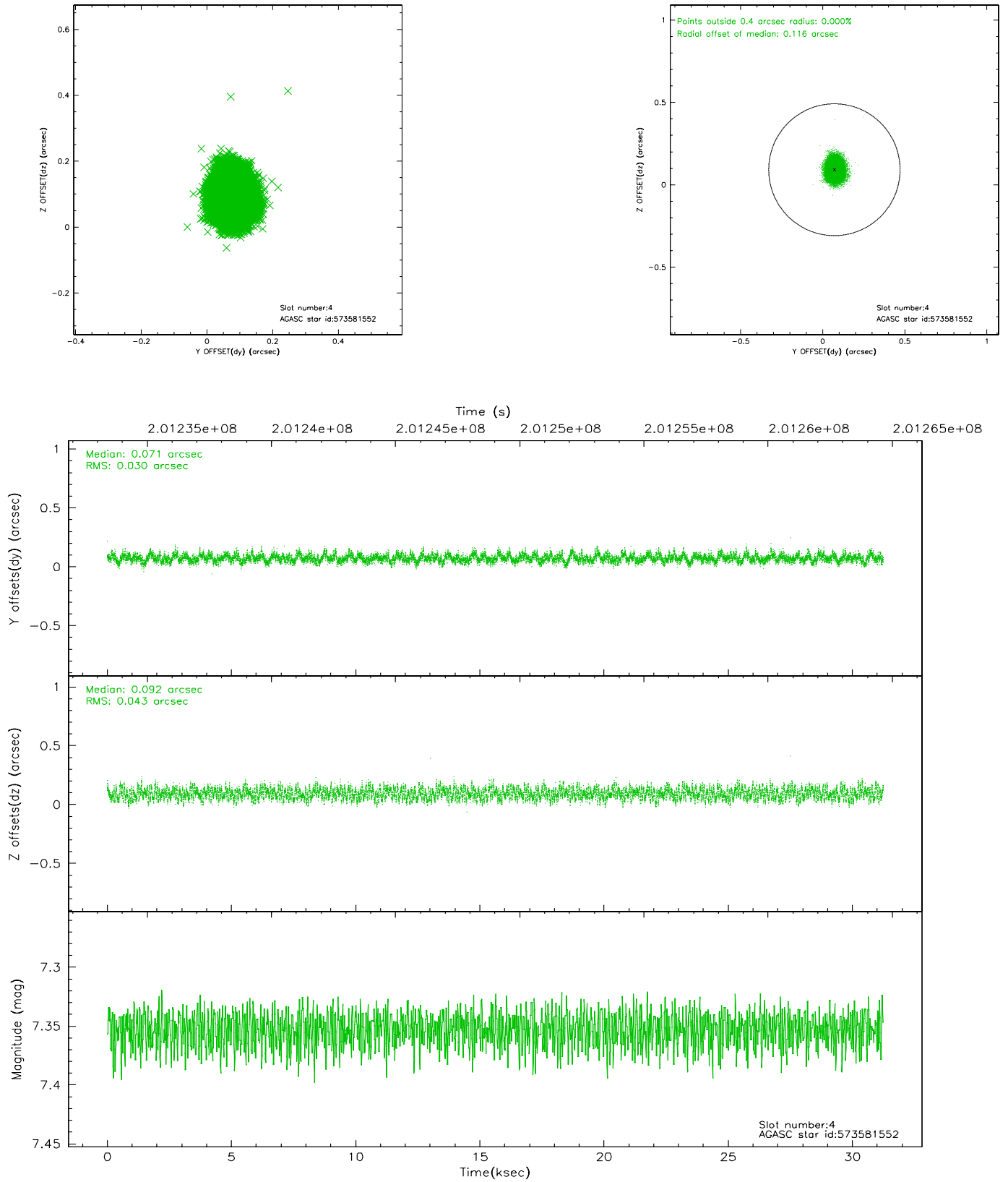
slot	status	id	mag	n_pts	med_dy	med_dz	dr1	dr2	ra	dec	mean_y	mean_z
0	FID	ACIS-S-2	7.10	7622	-0.015	0.011	0.007	0.012	0.000000	0.000000	-760.42	-1732.67
1	FID	ACIS-S-4	7.20	7622	0.026	0.004	0.006	0.010	0.000000	0.000000	2152.85	175.76
2	FID	ACIS-S-5	7.23	7620	-0.042	-0.007	0.007	0.012	0.000000	0.000000	-1813.22	169.46
3	GUIDE	573580824	8.52	15240	0.046	0.008	0.069	0.111	139.317201	69.093462	470.43	-582.84
4	GUIDE	573581552	7.35	15244	0.071	0.092	0.057	0.087	141.027156	68.861240	1205.83	1660.99
5	GUIDE	573582400	8.52	15241	0.055	-0.018	0.073	0.121	137.975421	69.043191	686.46	-2304.48
6	GUIDE	573583888	8.07	15236	-0.032	-0.060	0.060	0.094	138.092051	69.084957	534.54	-2156.05
7	GUIDE	573576200	6.96	15240	-0.143	-0.019	0.048	0.073	139.379850	69.873523	-2339.05	-593.16

2.4 Star Slots

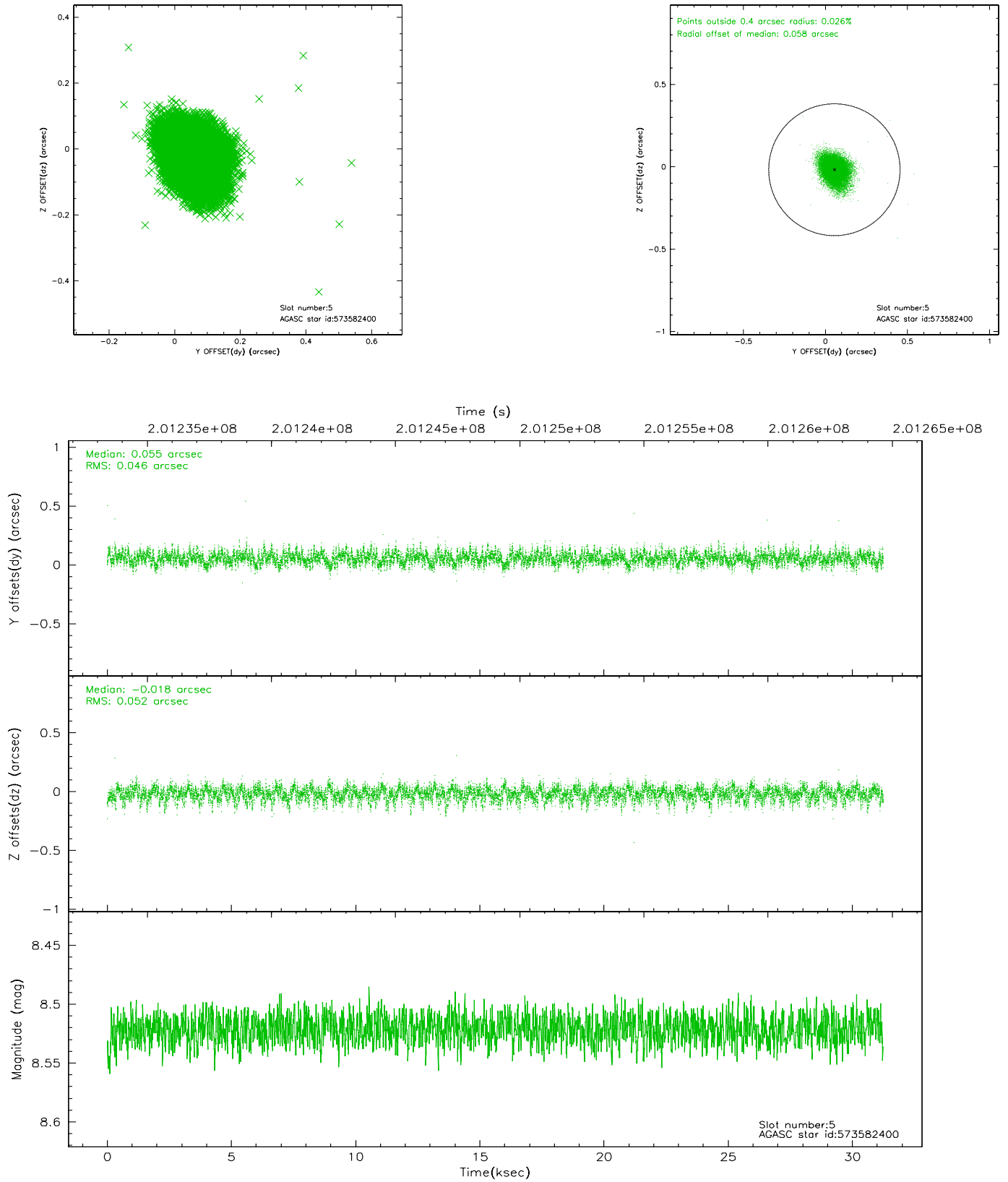
2.4.1 Slot 3



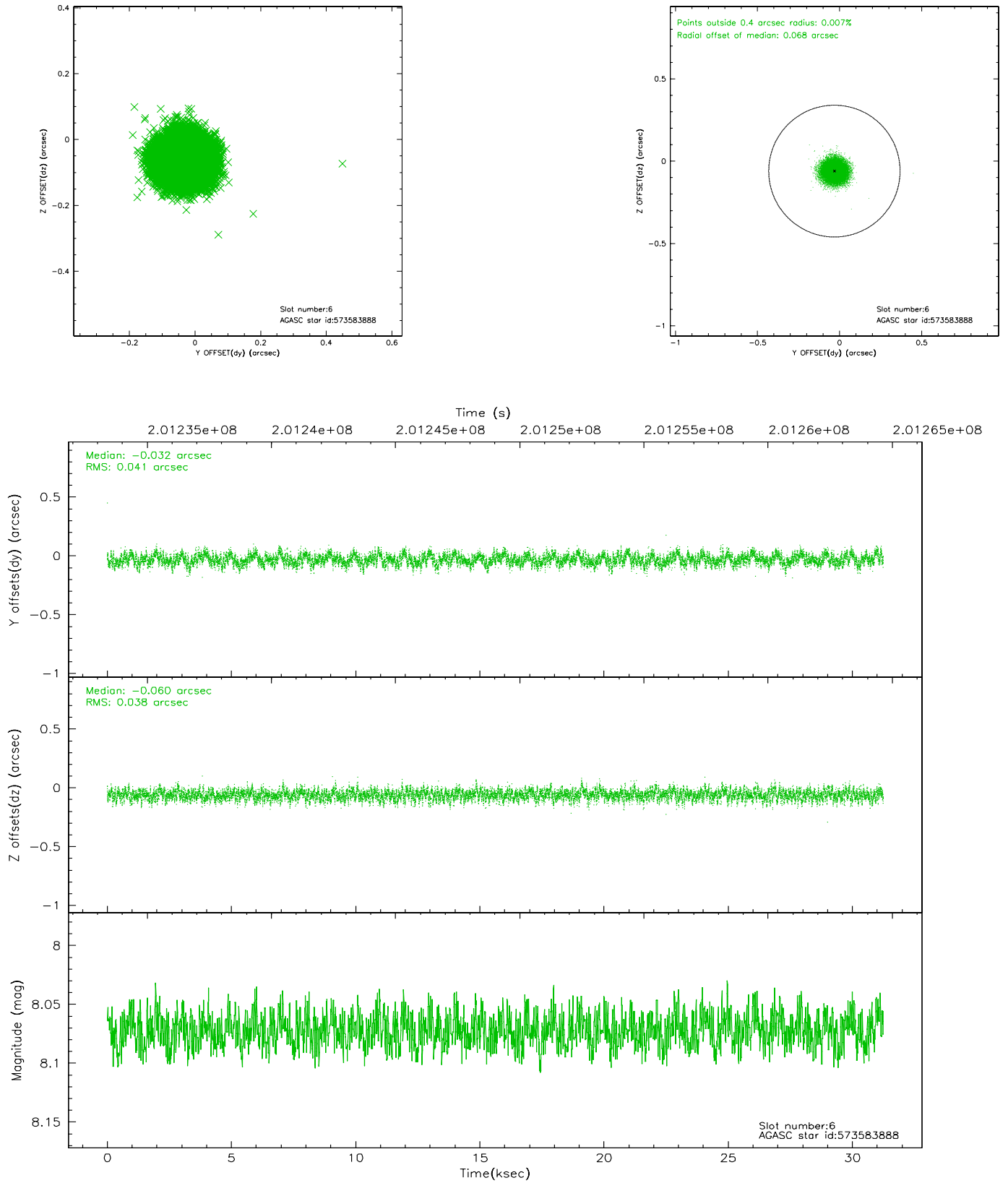
2.4.2 Slot 4



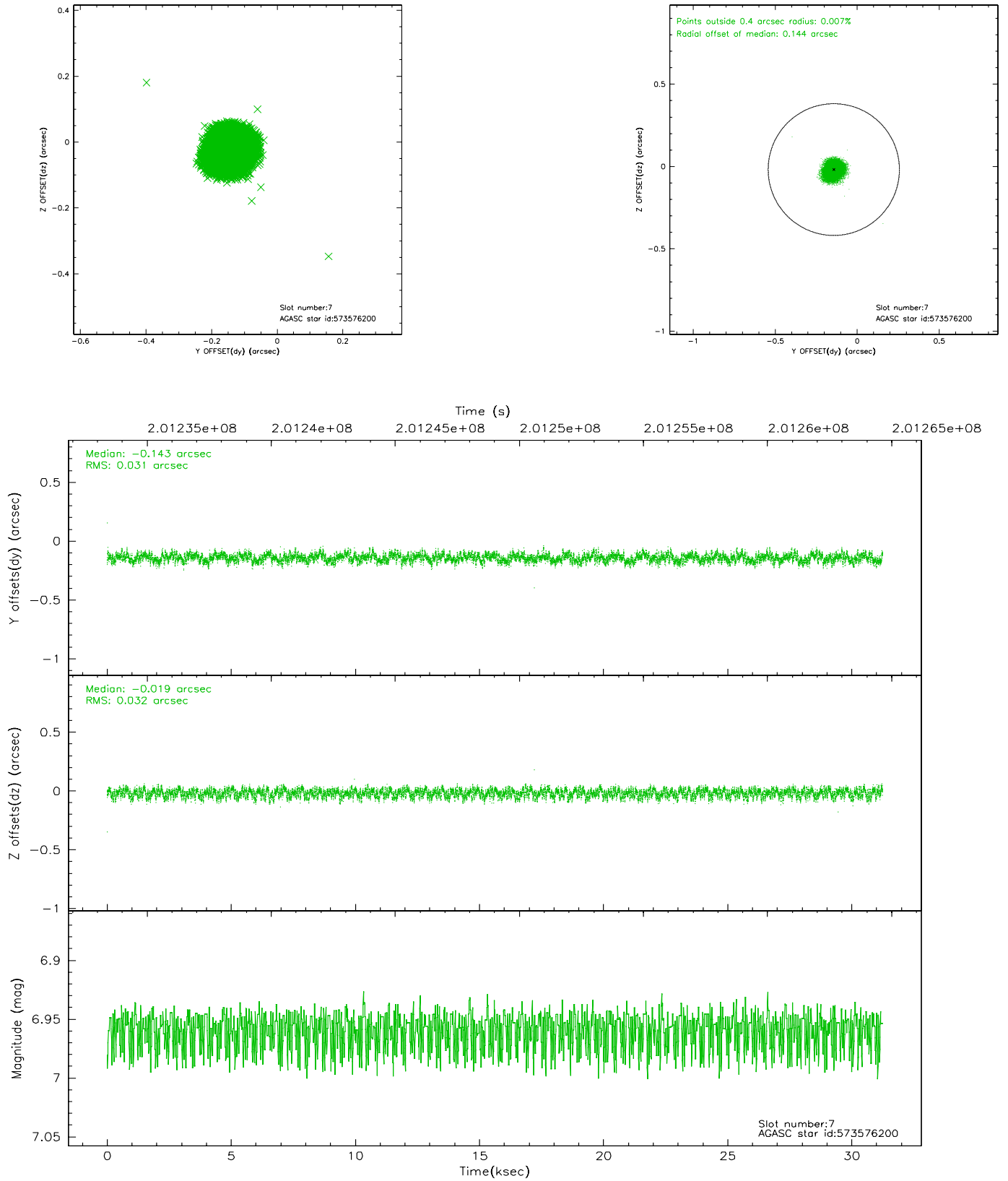
2.4.3 Slot 5



2.4.4 Slot 6

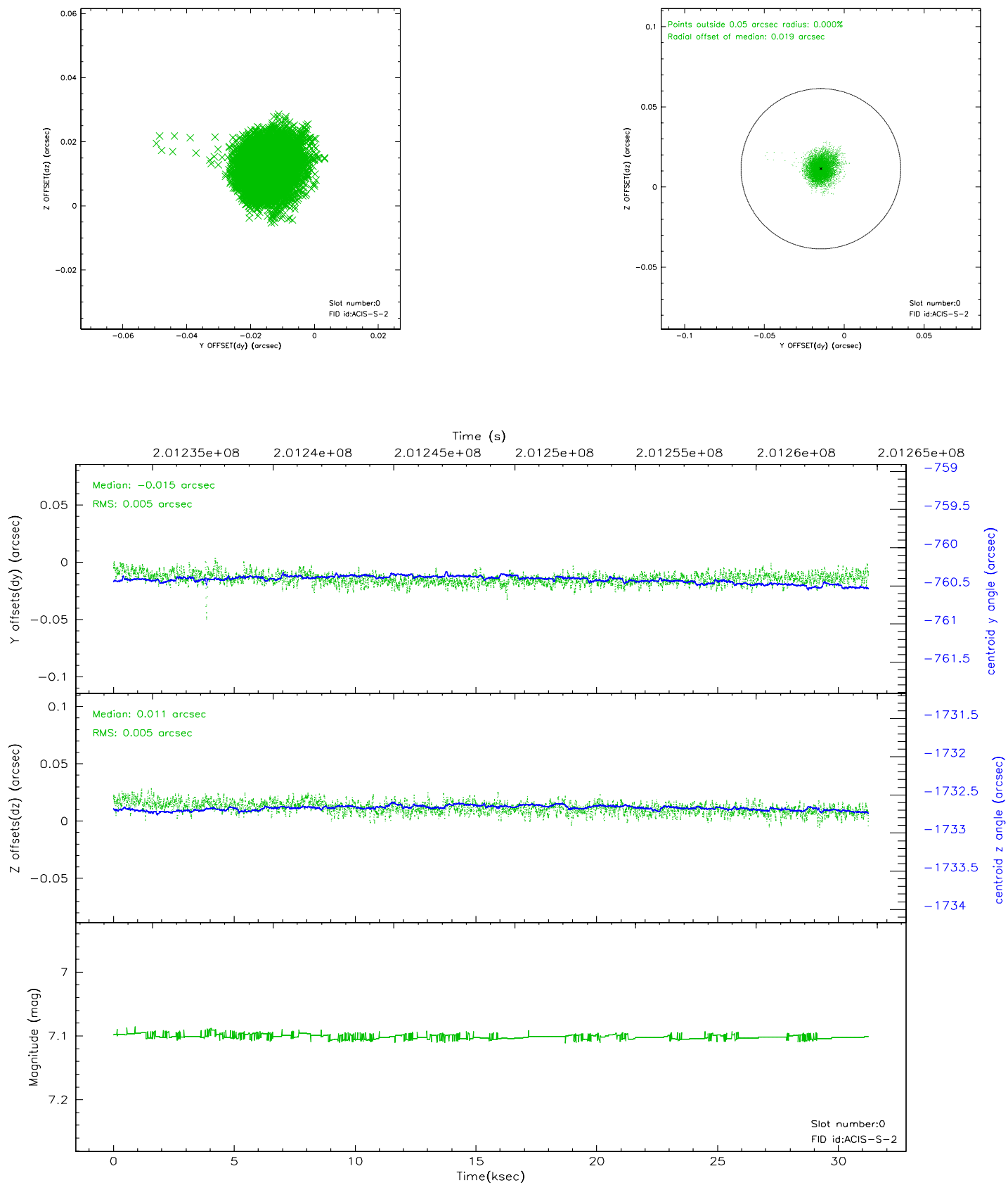


2.4.5 Slot 7

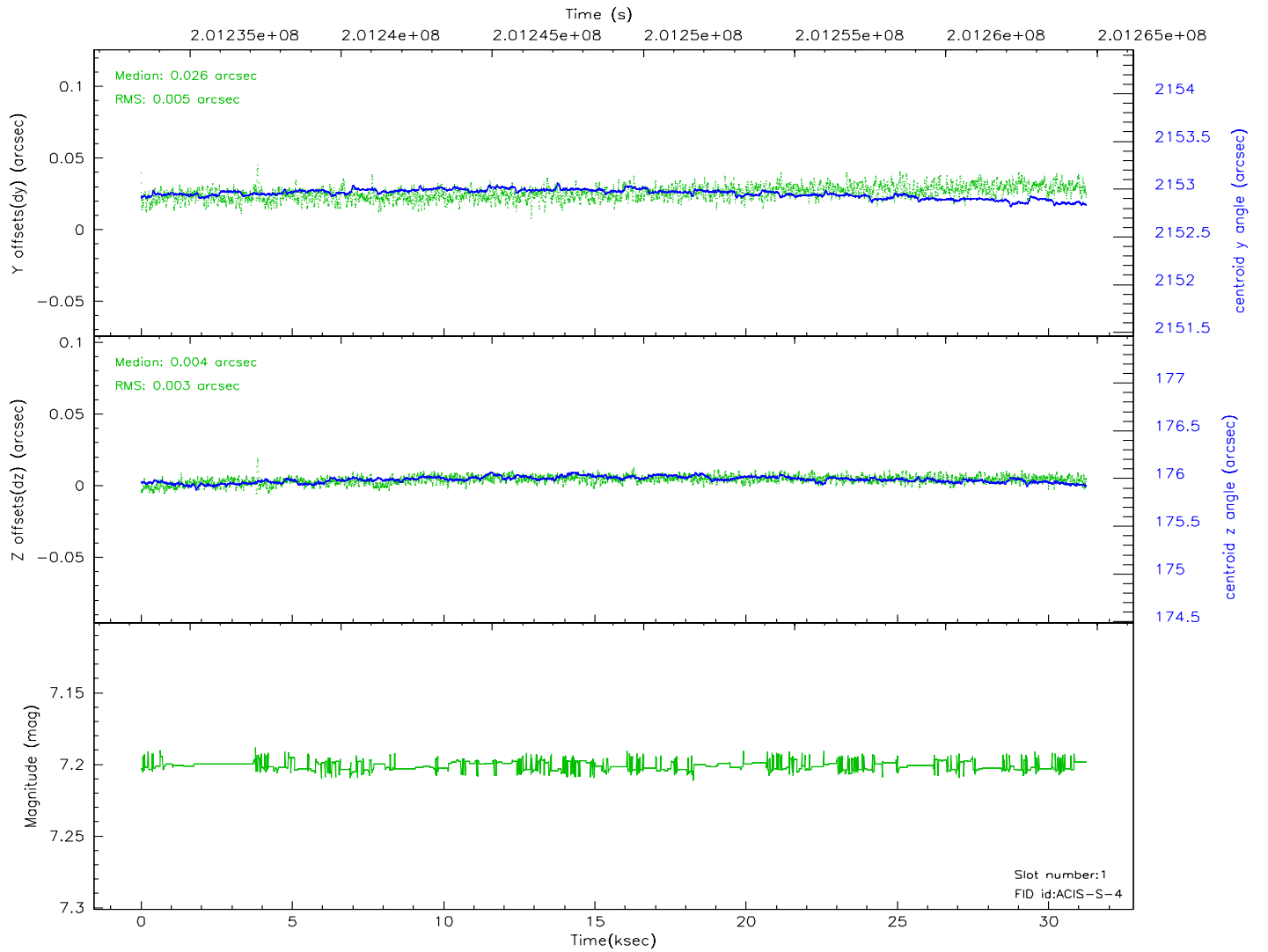
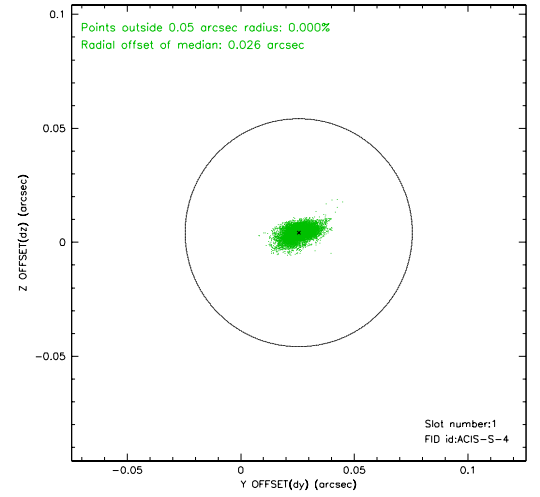
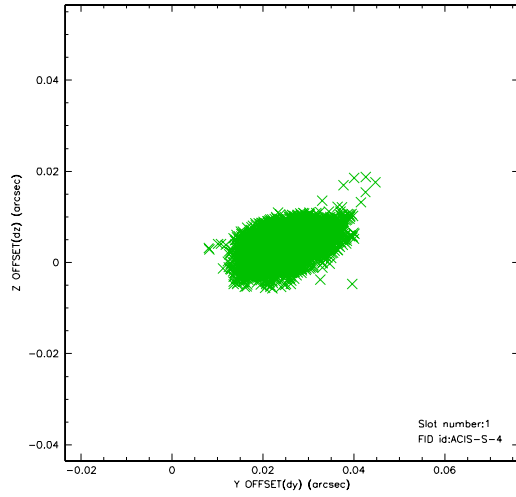


2.5 FID Slots

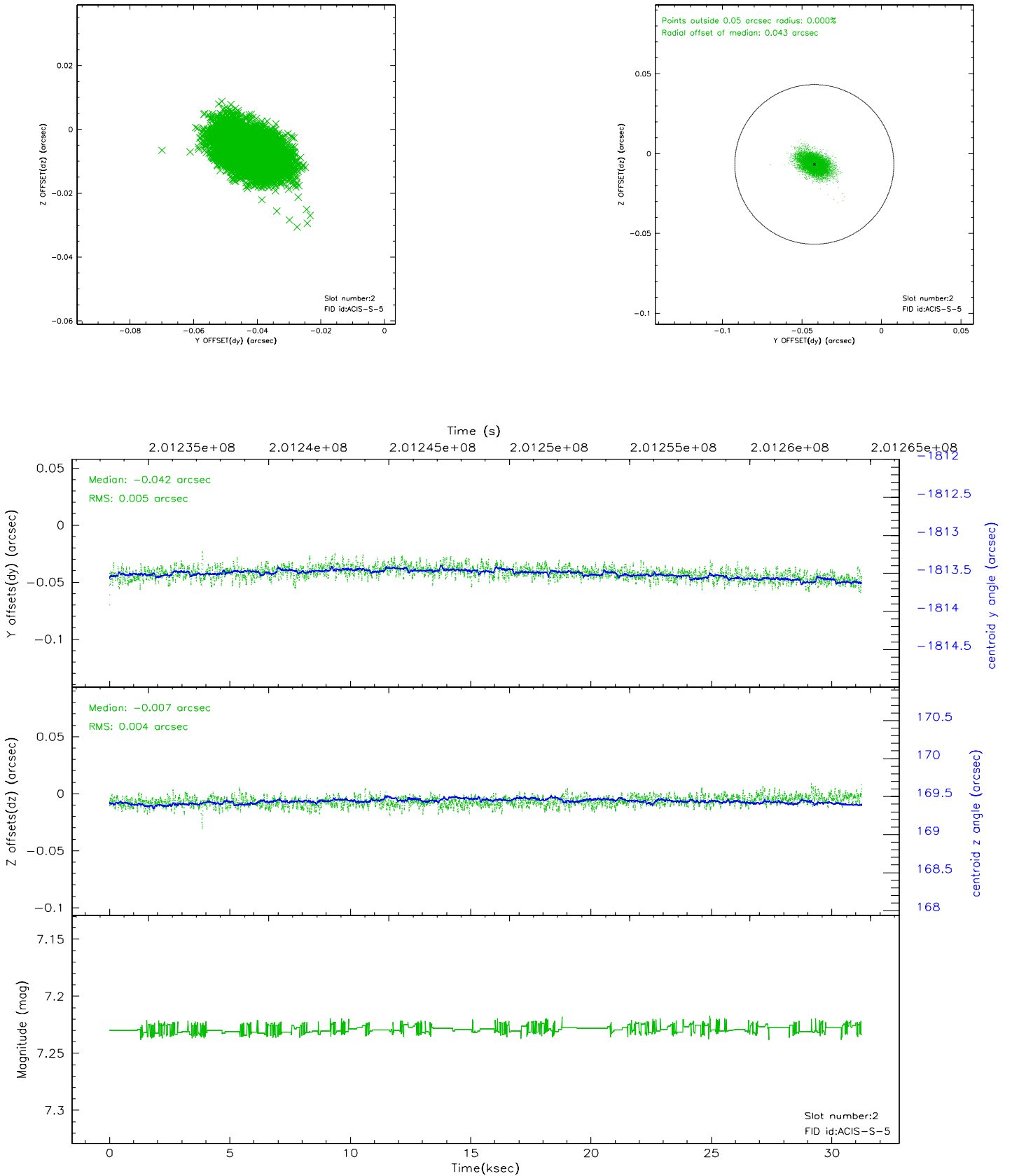
2.5.1 Slot 0



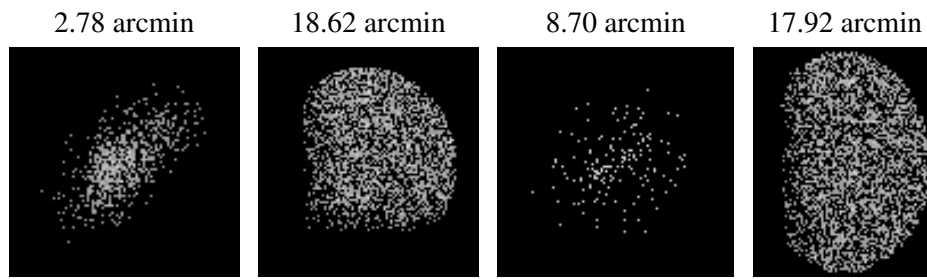
2.5.2 Slot 1



2.5.3 Slot 2



3 Point Sources



A Summary

A.1 Status

V&V Scientist	Jen Lauer
V&V Date (YYYY-MM-DD)	2006.05.18
V&V Edition	1
V&V Disposition and Status	OK
V&V Charge Time	31.241

A.2 Comments