

V&V Reference Report

L2 ASCDS Version : 7.6.7

Observation 4688 - L2 Version 004
Chandra X-Ray Center

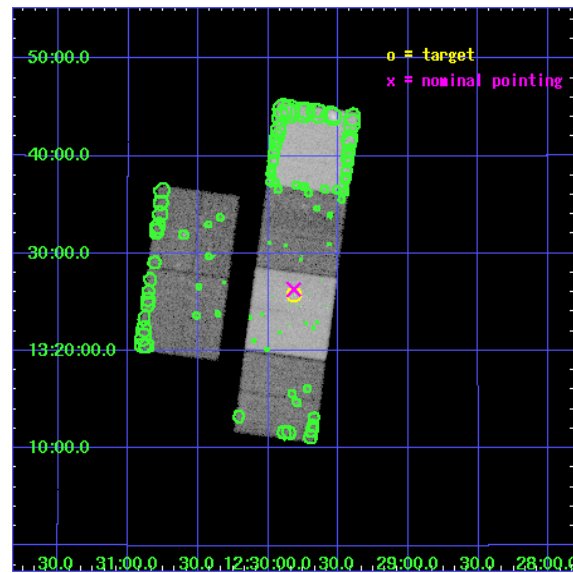
L2 Processing Date : Mar 15 2006

Contents

1	Front	2
2	OBI	3
2.1	OBI	3
2.1.1	Images	3
2.1.2	Bias	3
2.1.3	Parameters	4
2.1.4	Events	4
2.2	Compared Parameters	5
2.3	Aspect	6
2.4	Star Slots	9
2.4.1	Slot 3	9
2.4.2	Slot 4	10
2.4.3	Slot 5	11
2.4.4	Slot 6	12
2.5	FID Slots	13
2.5.1	Slot 0	13
2.5.2	Slot 1	14
2.5.3	Slot 2	15
3	Point Sources	16
A	Summary	17
A.1	Status	17
A.2	Comments	17

1 Front

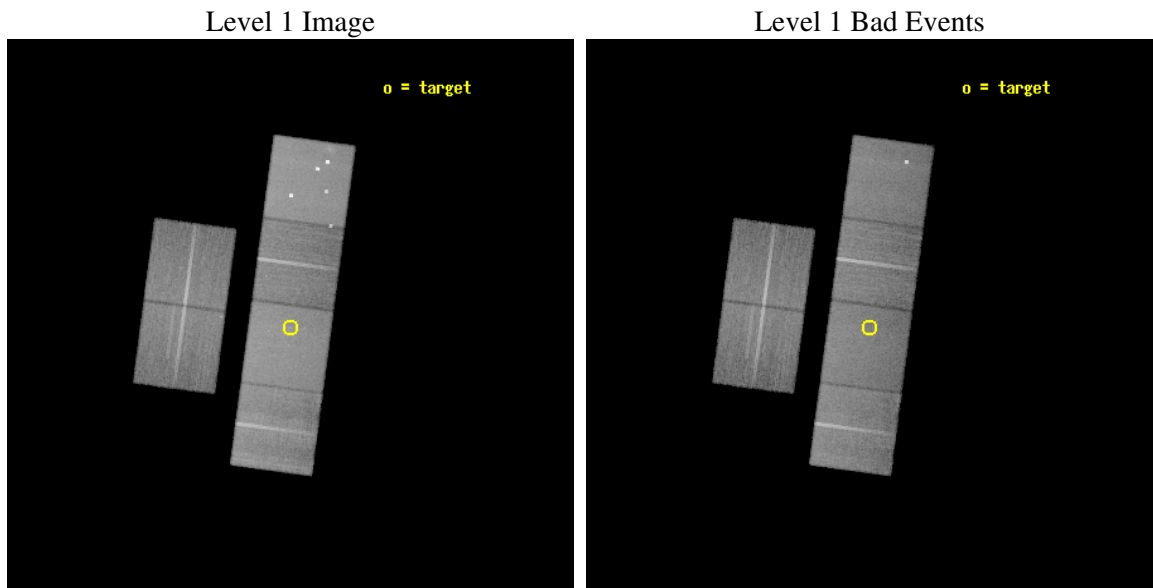
seq_num	600343
obs_id	4688
title	X-ray Census of Supermassive Black Holes: I. New Observations
observer	Dr. Michael Loewenstein
object	NGC 4473
dtcycle	0
cycle	P
ra_targ	187.45375
dec_targ	13.429444
ra_nom	187.45425485364
dec_nom	13.43857797714
roll_nom	97.644856769764
revision	4
ontime	29958.399888396
livetime	29579.048590227
ontime2	29958.399888396
ontime3	29958.399888396
ontime5	29958.399888396
ontime6	29955.158918023
ontime7	29958.399888396
ontime8	29958.399888396
l2events	373746



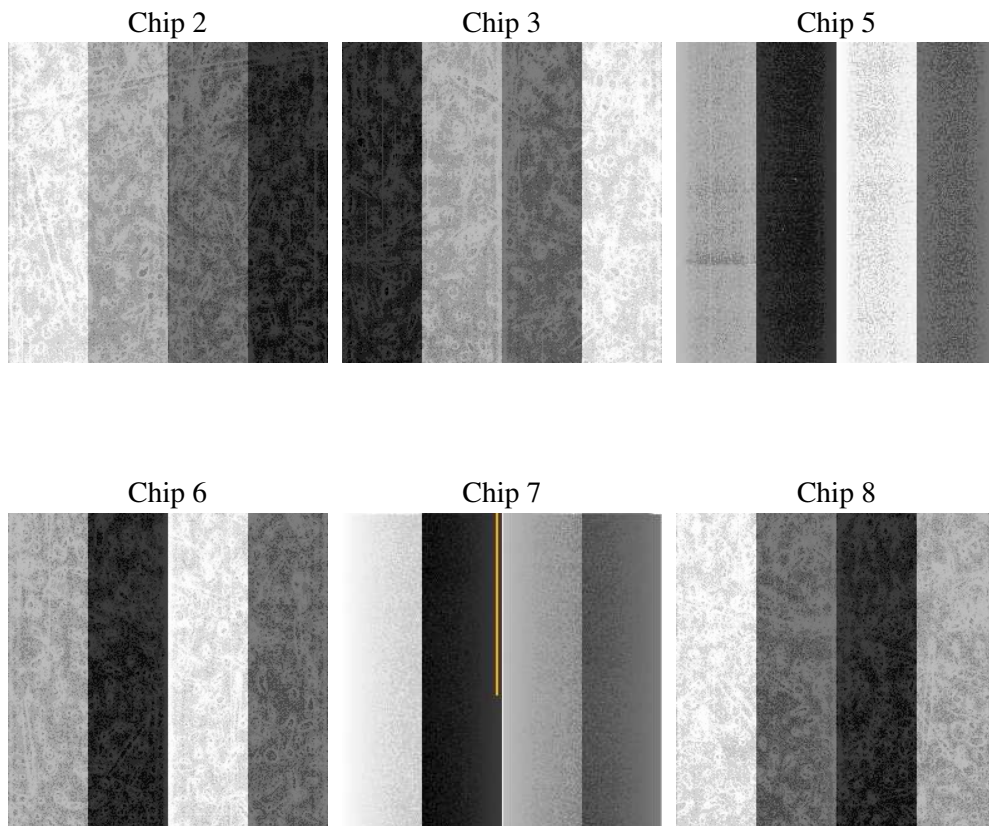
2 OBI

2.1 OBI

2.1.1 Images



2.1.2 Bias



2.1.3 Parameters

obi_num	0
ascdsver	7.6.7.1
caldsver	3.2.1
date	2006-03-15T19:57:56
revision	4

sched_exp_time	30000.000000
ontime	29963.164457142
ontime2	29963.164457142
ontime3	29963.164457142
ontime5	29963.164457142
ontime6	29959.923486769
ontime7	29963.164457142
ontime8	29963.164457142
l1events	1627258

2.1.4 Events

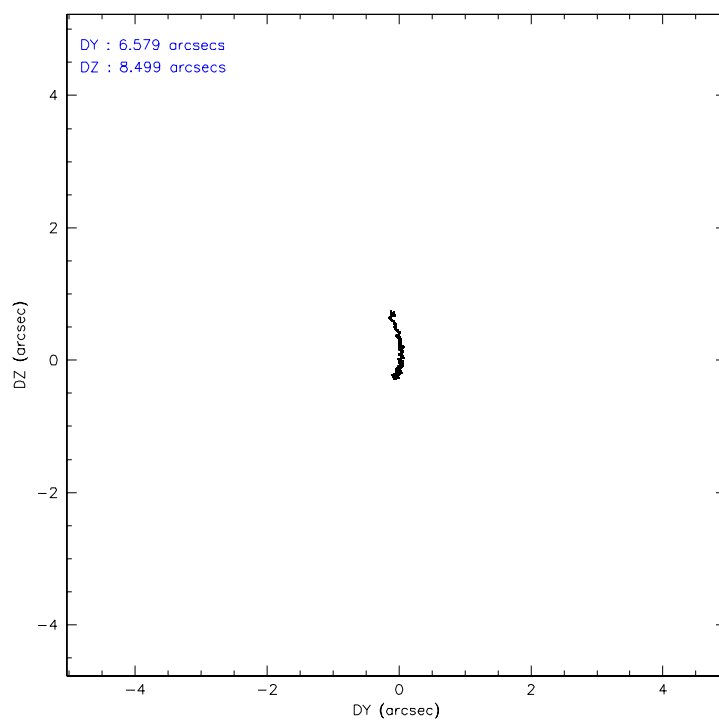
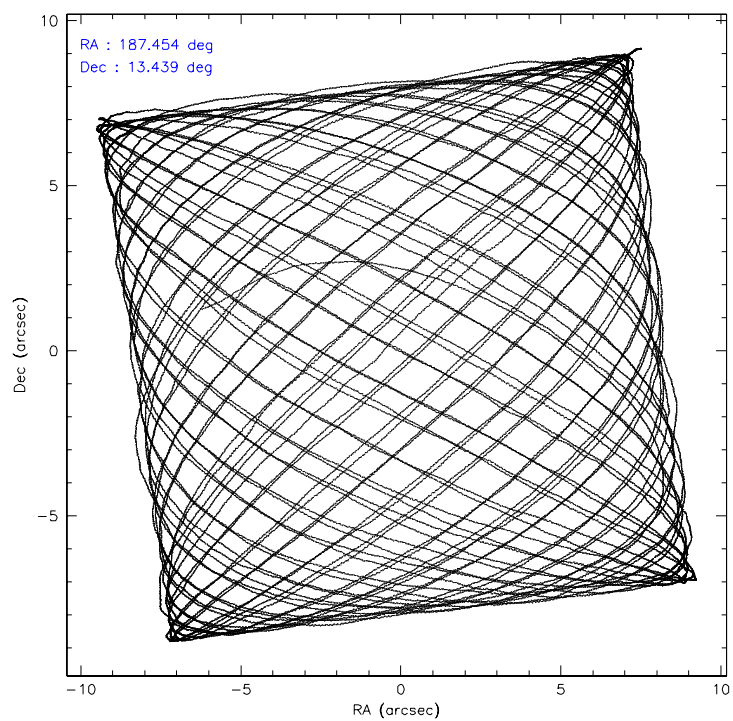
	ccd 2	ccd 3	ccd 5	ccd 6	ccd 7	ccd 8
level 1 events	217511	216854	361907	227017	314138	289831
rejected events	188230	187718	192278	195920	190576	223628
rejected %	86%	86%	53%	86%	60%	77%

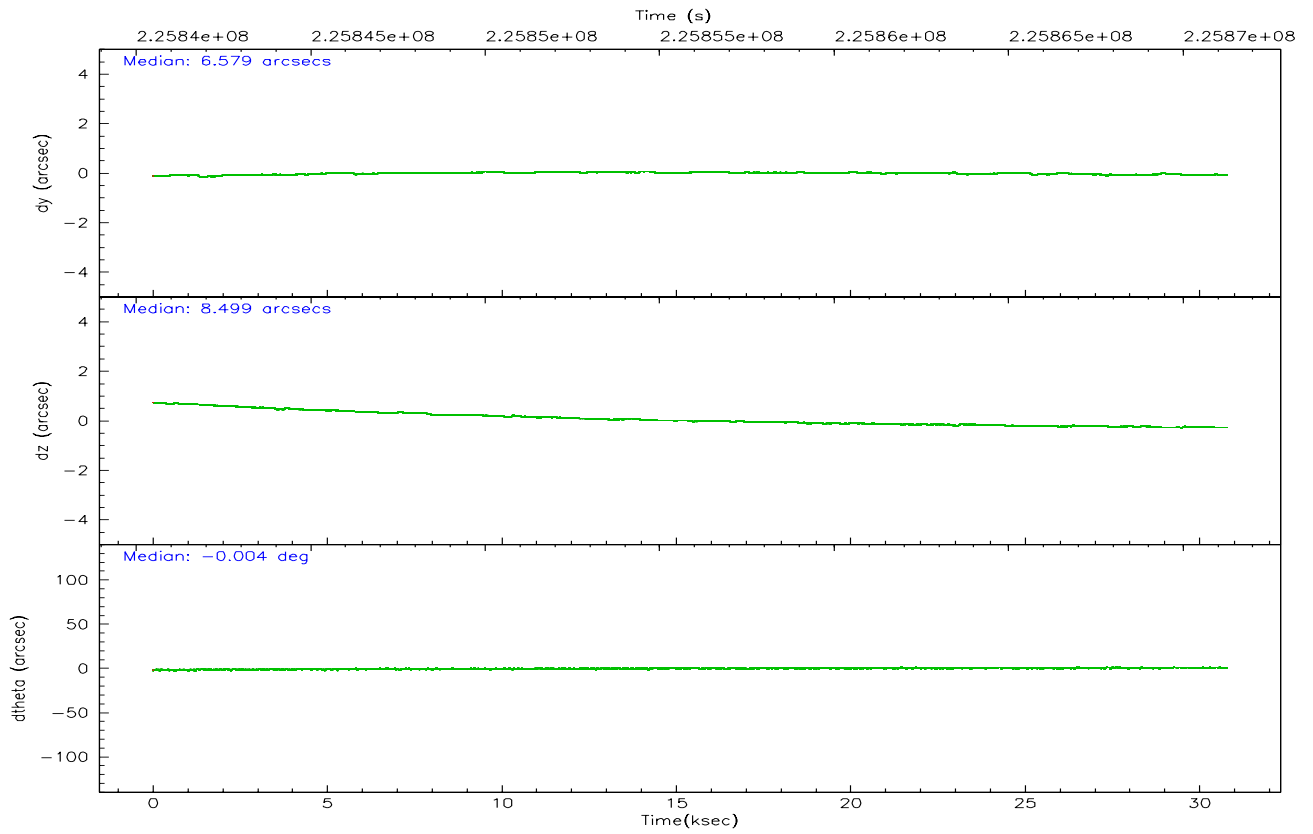
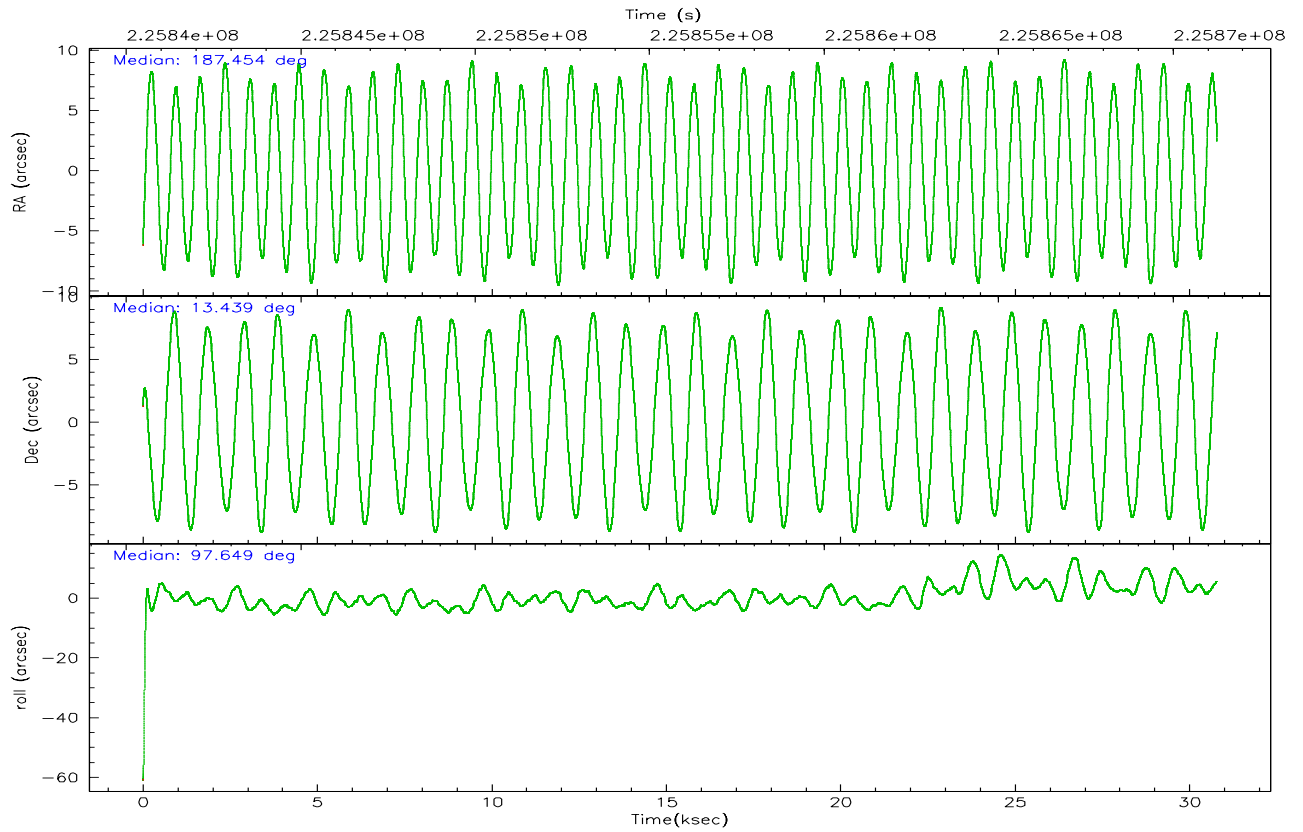
	ccd 2	ccd 3	ccd 5	ccd 6	ccd 7	ccd 8
grade 0 events	14206	14187	27419	14242	8923	23443
	6%	6%	7%	6%	2%	8%
grade 1 events	173	148	342	125	176	225
	0%	0%	0%	0%	0%	0%
grade 2 events	5540	5185	49926	5941	31078	14131
	2%	2%	13%	2%	9%	4%
grade 3 events	2459	2557	3575	2782	6411	6558
	1%	1%	0%	1%	2%	2%
grade 4 events	2543	2668	3365	2591	6430	6248
	1%	1%	0%	1%	2%	2%
grade 5 events	8724	10023	15645	10137	19761	13729
	4%	4%	4%	4%	6%	4%
grade 6 events	4538	4543	85388	5549	70752	15828
	2%	2%	23%	2%	22%	5%
grade 7 events	179328	177543	176247	185650	170607	209669
	82%	81%	48%	81%	54%	72%

2.2 Compared Parameters

Parameter	Planned	Actual	Parameter	Planned	Actual
Instrument	ACIS	ACIS	Obspar format version number	6	6
Detector	ACIS-235678	ACIS-235678	Obspar file type	PREDICTED	ACTUAL
Grating	NONE	NONE	Obspar update status	NONE	UPDATED
Data mode	VFAINT	VFAINT	On-chip summing requested	N	N
Observation mode	POINTING	POINTING	Subarray requested	NONE	NONE
Pointing RA	187.471632	187.4542548536381	Alternating exposures requested	N	N
Pointing Dec	13.417273	13.43857797714012	Primary exposure time	0.000000	3.2
Pointing Roll	97.484226	97.64485676976402			
SIM focus pos (mm)	-0.684267	-0.6828225247311905			
SIM defocus (mm)	0	0.001444936568705701			
SIM translation stage pos (mm)	-190.132523	-190.1400660498719			
SIM translation stage offset (mm)	0	0.00754346686406393			
Observation start time	225841270.184000	225840007.42155			
Observation start date	2005-02-26T21:40:06	2005-02-26T21:20:07			
Observation end time	225871270.184000	225872764.88554			
Observation end date	2005-02-27T06:00:06	2005-02-27T06:26:04			
Read mode	TIMED	TIMED			

2.3 Aspect



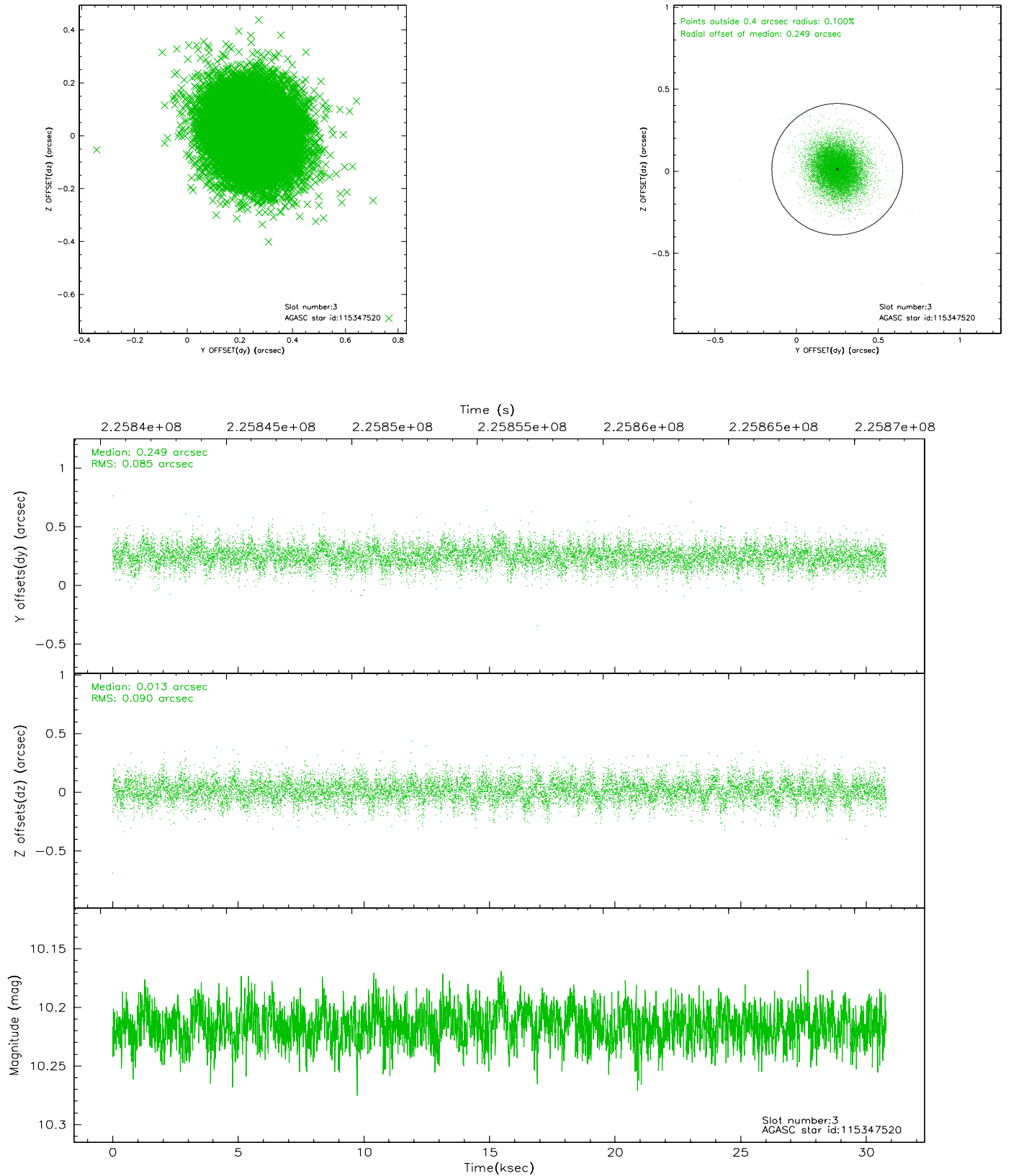


Slot Statistics

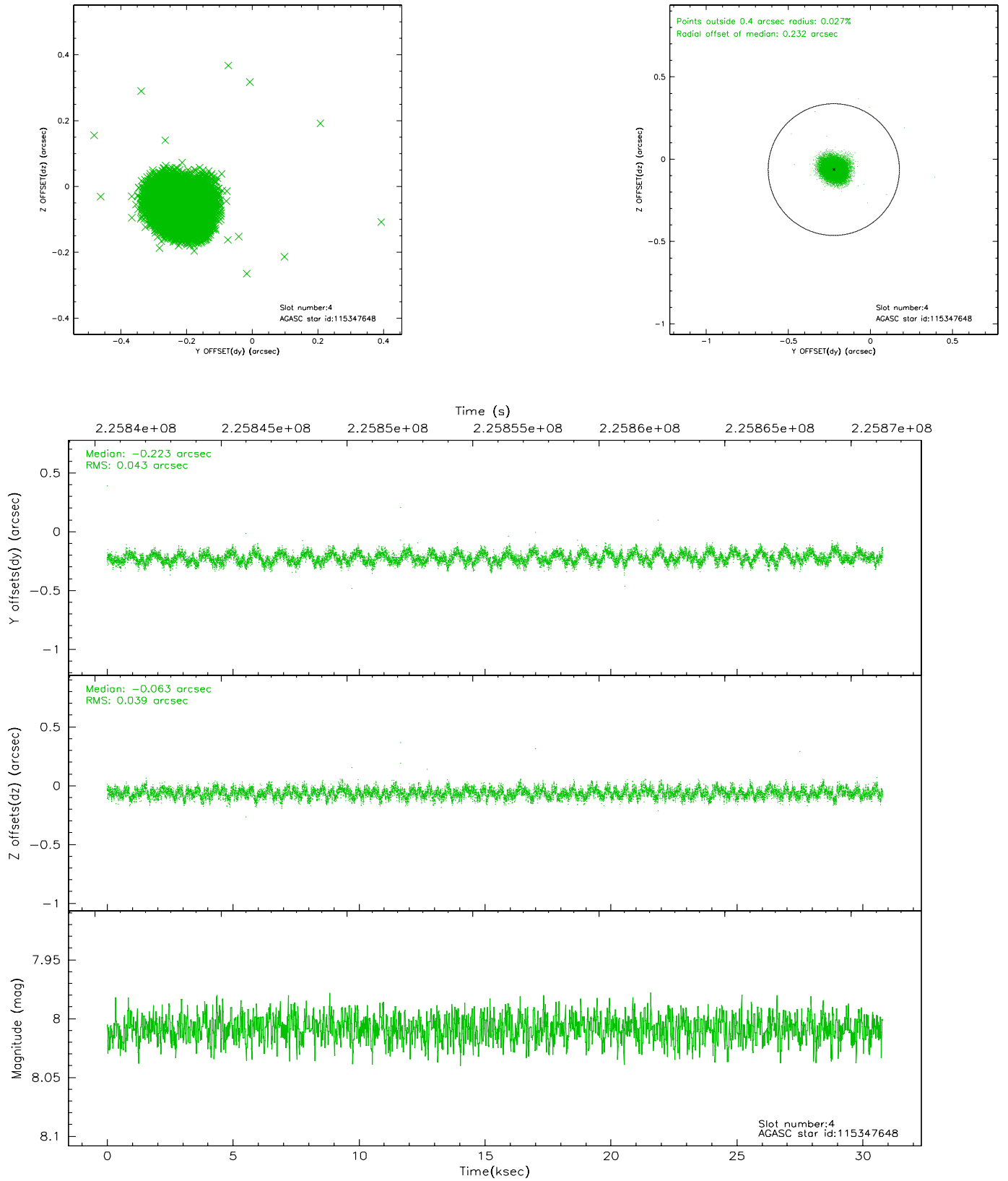
slot	status	id	mag	n_pts	med_dy	med_dz	dr1	dr2	ra	dec	mean_y	mean_z
0	FID	ACIS-S-2	7.10	7511	-0.021	-0.020	0.008	0.015	0.000000	0.000000	-759.34	-1729.80
1	FID	ACIS-S-4	7.21	7511	0.028	0.016	0.005	0.009	0.000000	0.000000	2153.97	178.63
2	FID	ACIS-S-5	7.23	7510	-0.037	0.014	0.008	0.016	0.000000	0.000000	-1812.10	172.40
3	GUIDE	115347520	10.22	15002	0.249	0.013	0.129	0.215	187.517505	12.810279	-2187.22	125.46
4	GUIDE	115347648	8.01	15020	-0.223	-0.063	0.062	0.097	187.273687	13.950334	1992.74	435.94
5	GUIDE	115348424	9.51	15010	0.193	-0.000	0.093	0.152	187.199498	13.087929	-1050.45	1100.98
6	GUIDE	115350296	9.10	15013	-0.217	0.045	0.085	0.135	187.140806	13.950701	2055.12	896.17
7	OMITTED		0.00	0	0.000	0.000	0.000	0.000	0.000000	0.000000	0.00	0.00

2.4 Star Slots

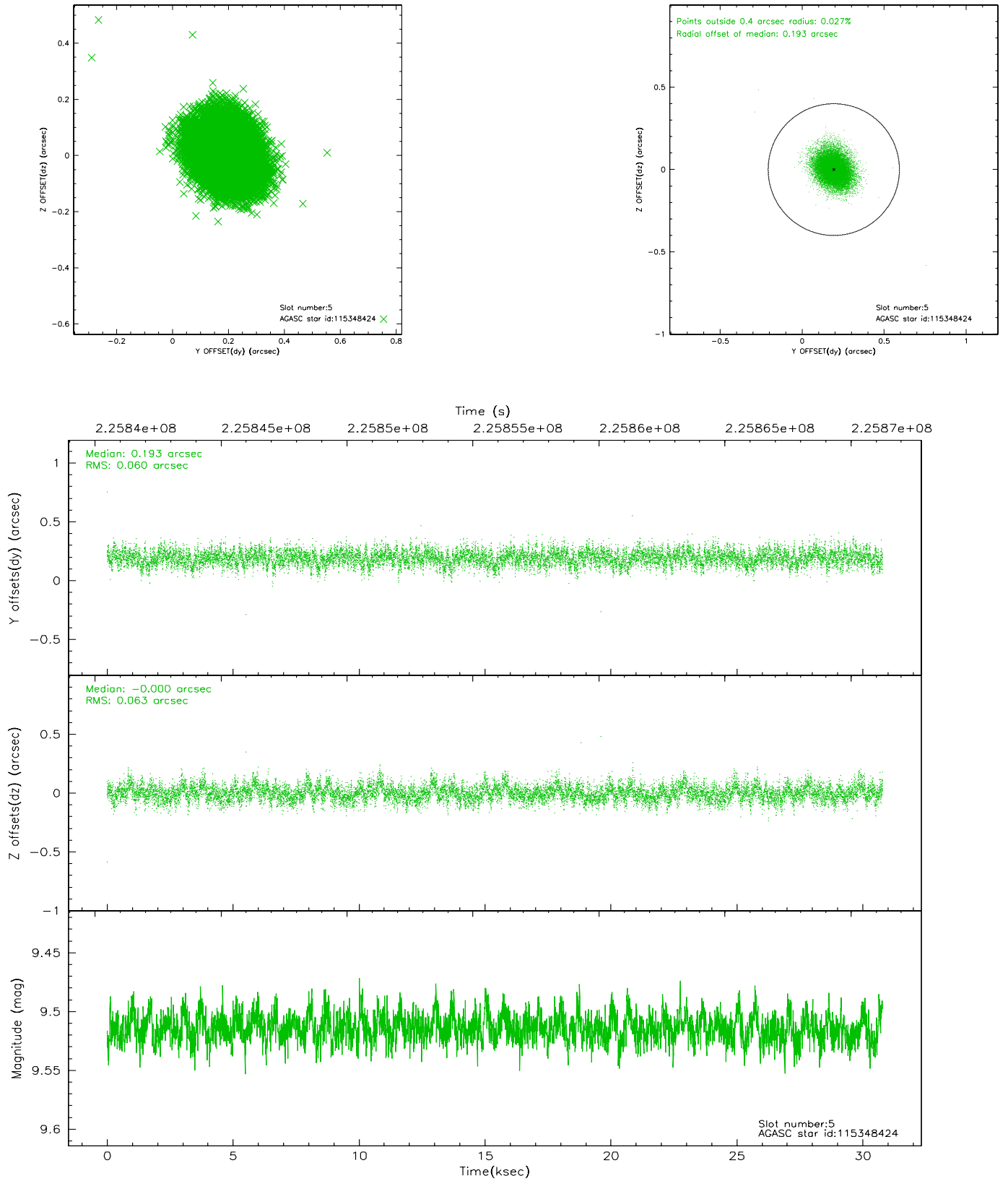
2.4.1 Slot 3



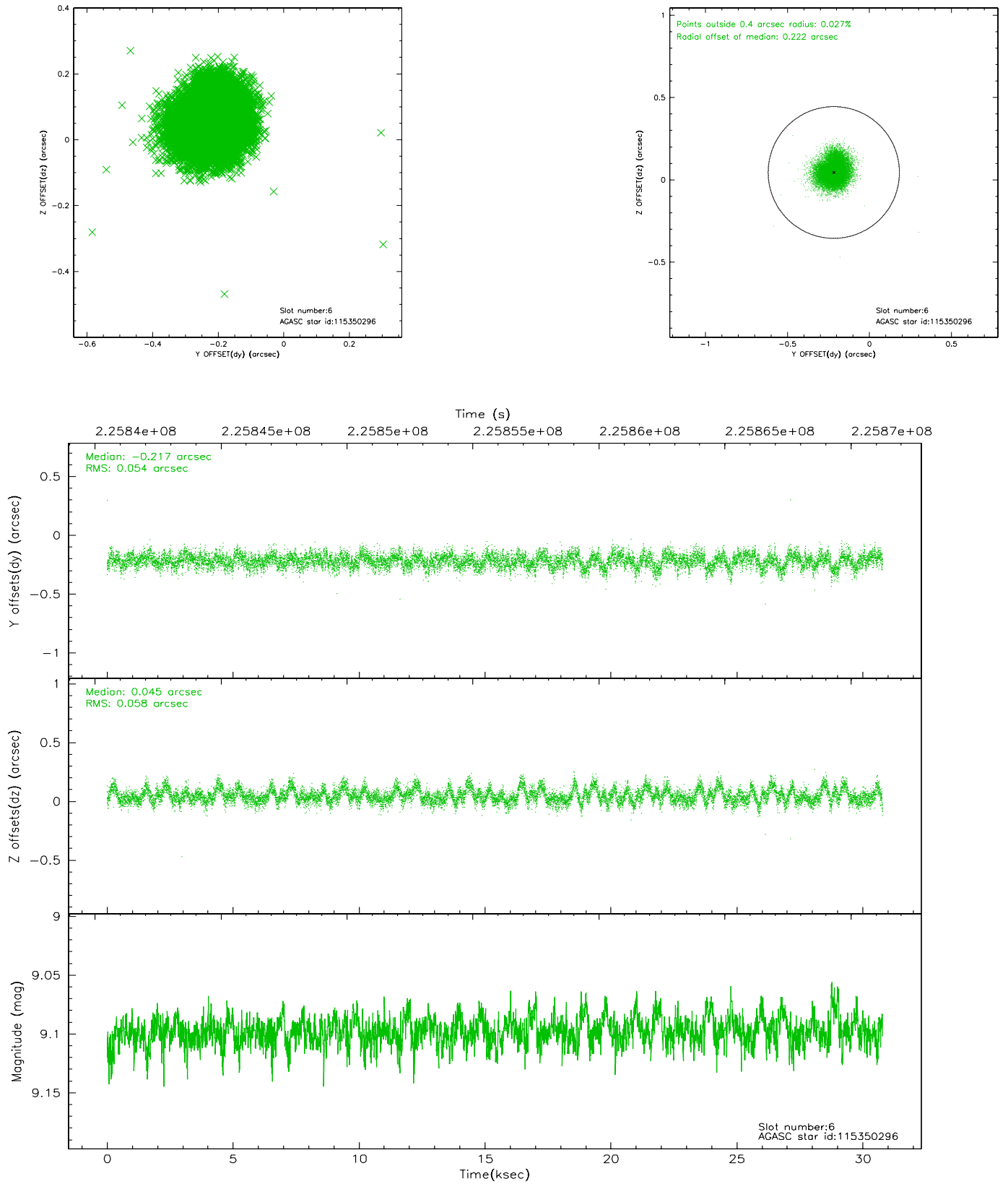
2.4.2 Slot 4



2.4.3 Slot 5

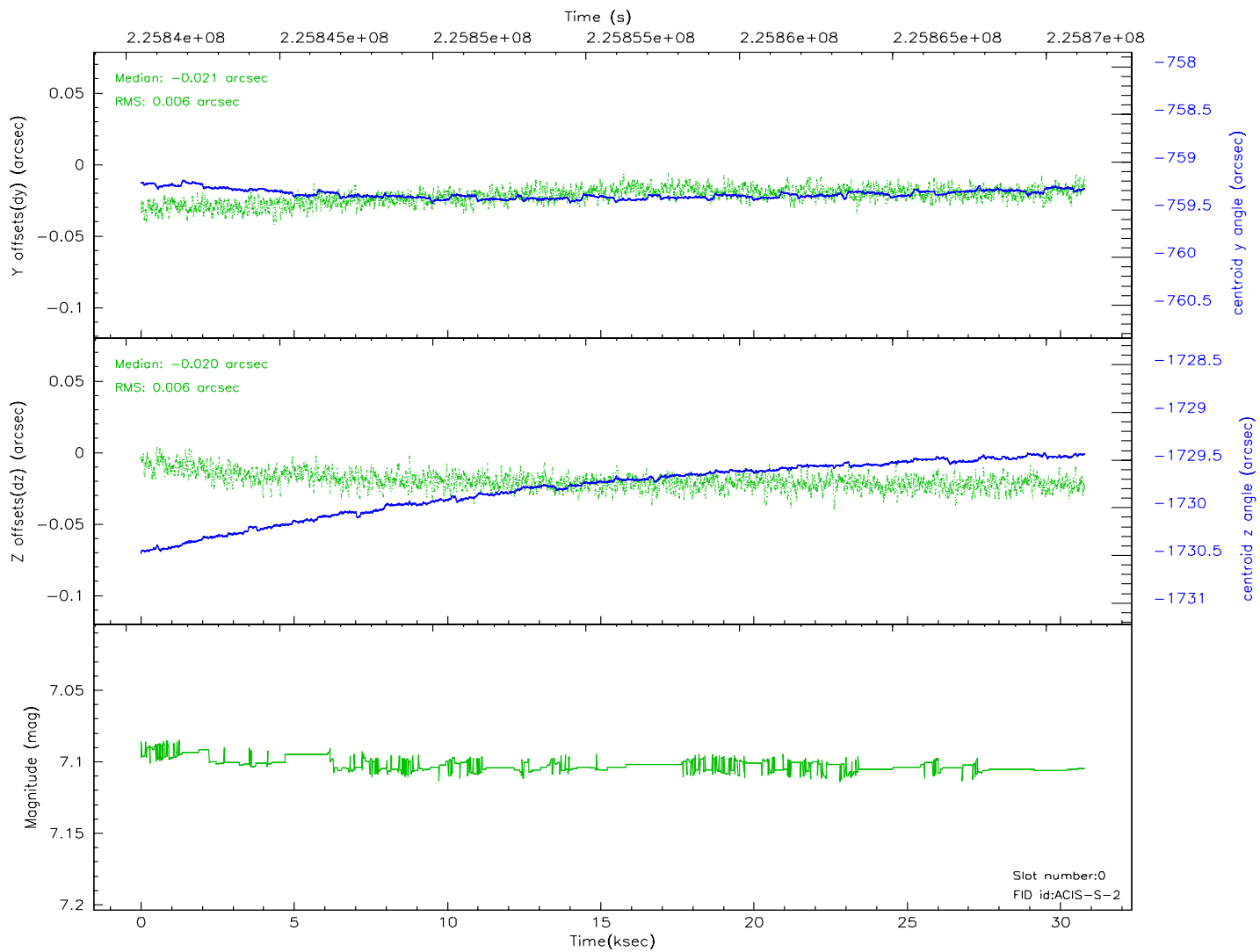
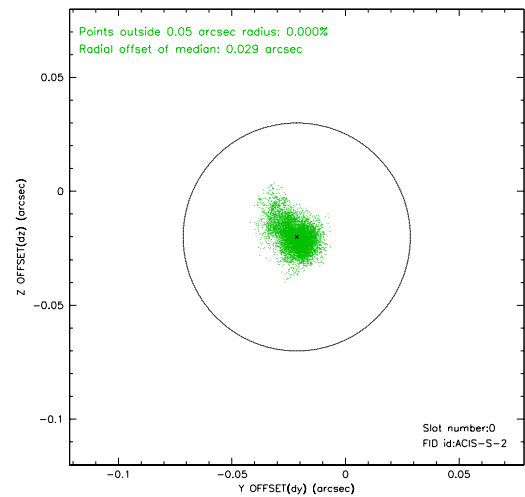
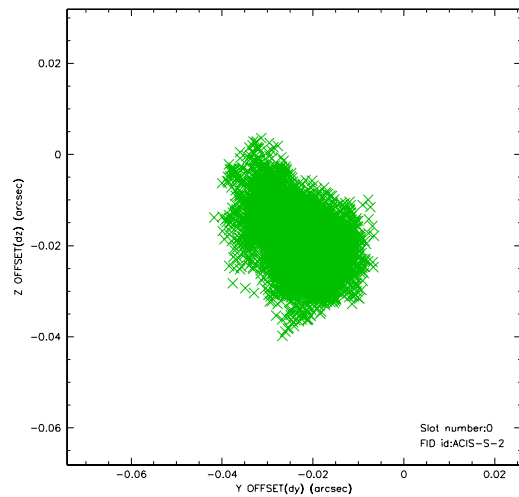


2.4.4 Slot 6

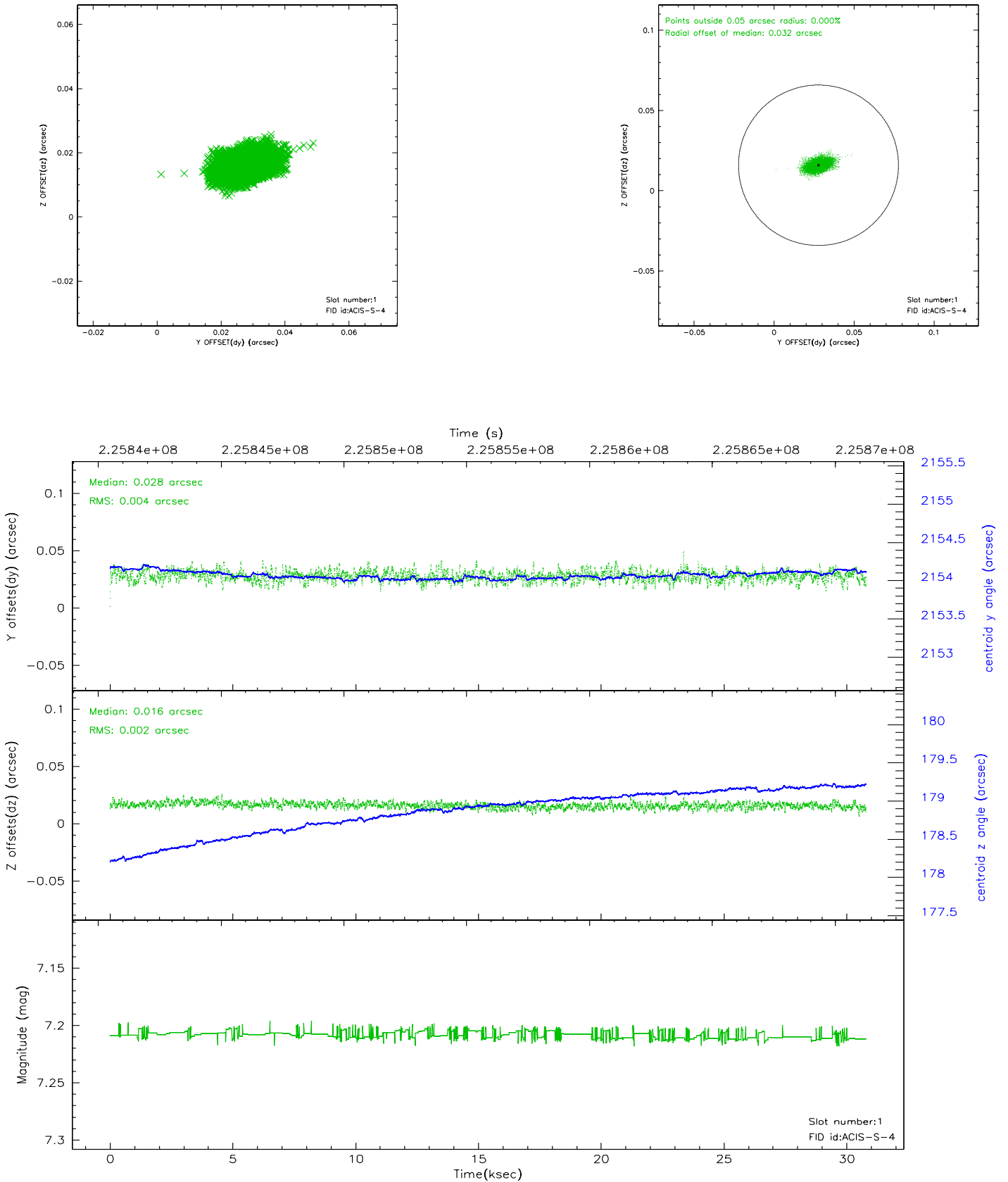


2.5 FID Slots

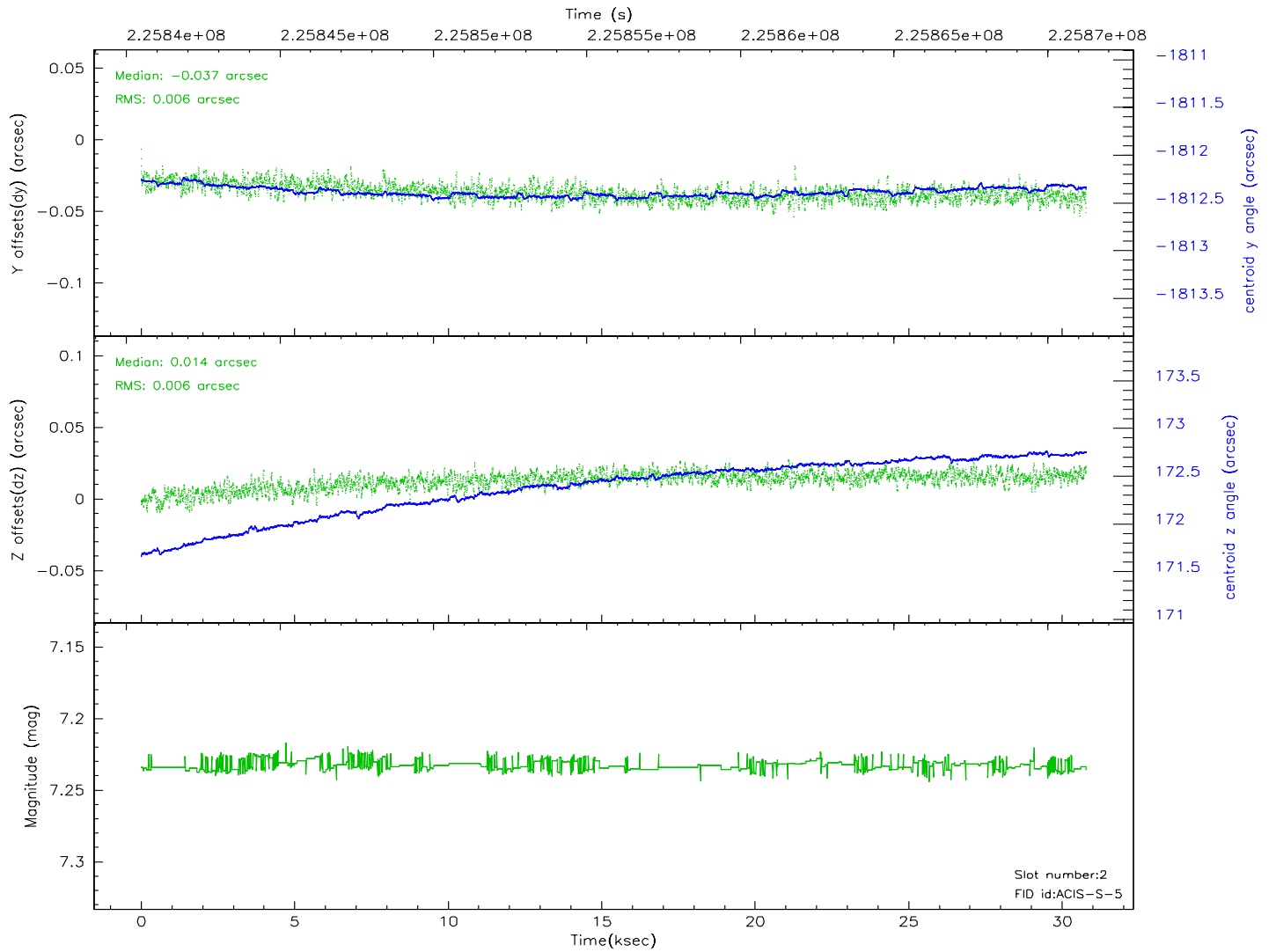
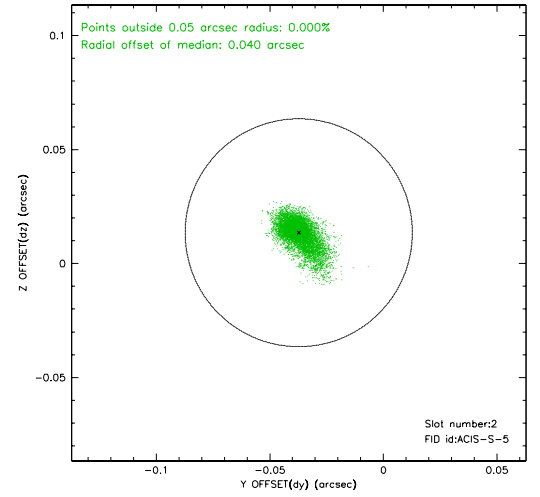
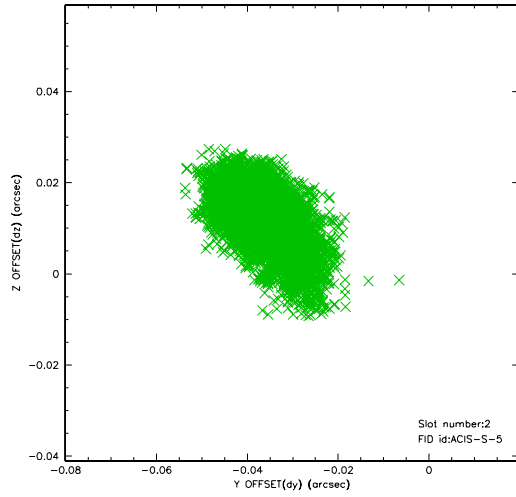
2.5.1 Slot 0



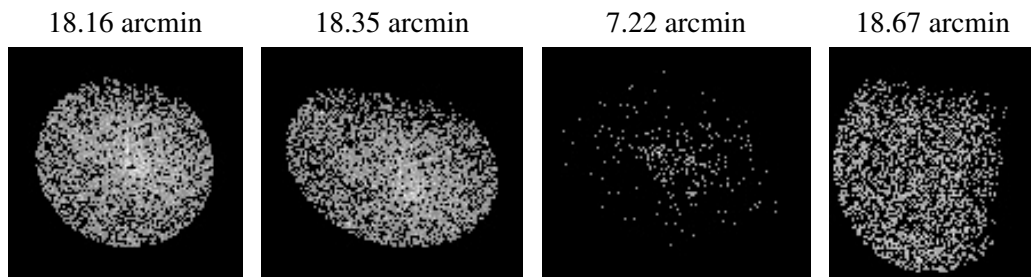
2.5.2 Slot 1



2.5.3 Slot 2



3 Point Sources



A Summary

A.1 Status

V&V Scientist	Jen Lauer
V&V Date (YYYY-MM-DD)	2006.03.16
V&V Edition	1
V&V Disposition and Status	OK
V&V Charge Time	29.95839

A.2 Comments