

V&V Reference Report

L2 ASCDS Version : 7.6.7.2

Observation 4683 - L2 Version 001
Chandra X-Ray Center

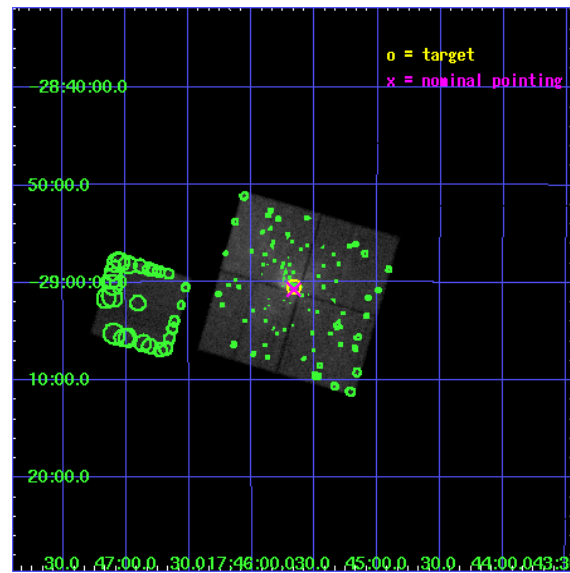
L2 Processing Date : Apr 29 2006

Contents

1	Front	2
2	OBI	3
2.1	OBI	3
2.1.1	Images	3
2.1.2	Bias	3
2.1.3	Parameters	4
2.1.4	Events	4
2.2	Compared Parameters	5
2.3	Aspect	6
2.4	Star Slots	9
2.4.1	Slot 3	9
2.4.2	Slot 4	10
2.4.3	Slot 5	11
2.4.4	Slot 6	12
2.4.5	Slot 7	13
2.5	FID Slots	14
2.5.1	Slot 0	14
2.5.2	Slot 1	15
2.5.3	Slot 2	16
3	Point Sources	17
A	Summary	18
A.1	Status	18
A.2	Comments	18

1 Front

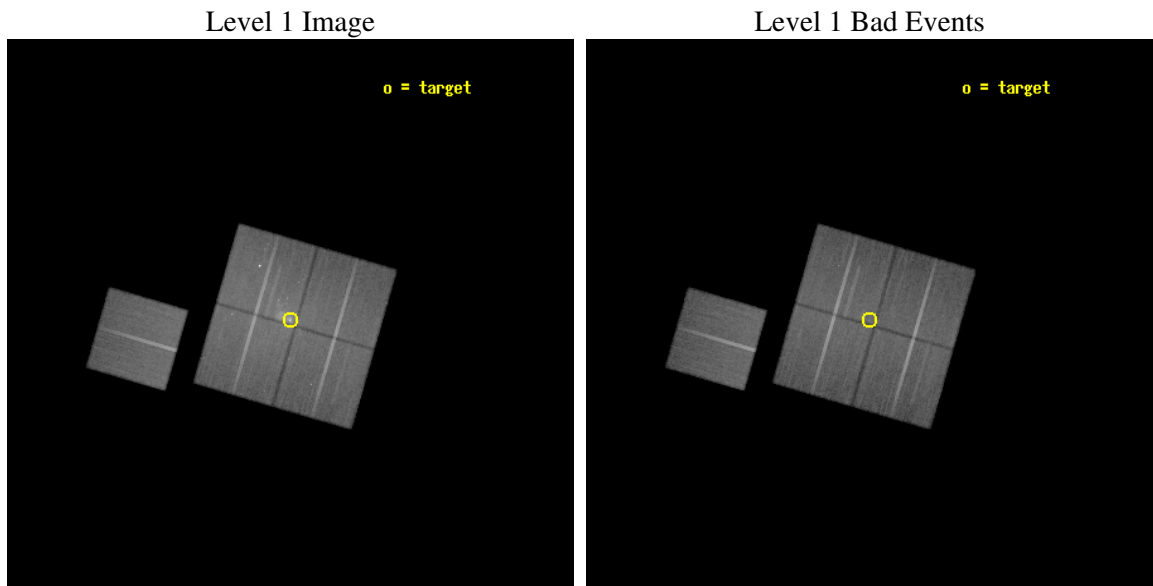
seq_num	600338
obs_id	4683
title	Simultaneous X-ray, Sub-millimeter, and Mid-Infrared Monitoring of Sagittarius A*
observer	Professor Gordon Garmire
object	Sgr A*
dtcycle	0
cycle	P
ra_targ	266.416667
dec_targ	-29.007778
ra_nom	266.4160479105
dec_nom	-29.012377055601
roll_nom	286.23393318463
revision	2
ontime	50179.699903518
livetime	49524.065182521
ontime0	50176.558923274
ontime1	50176.558913291
ontime2	50179.699903518
ontime3	50179.699903518
ontime6	50179.699903518
l2events	408412



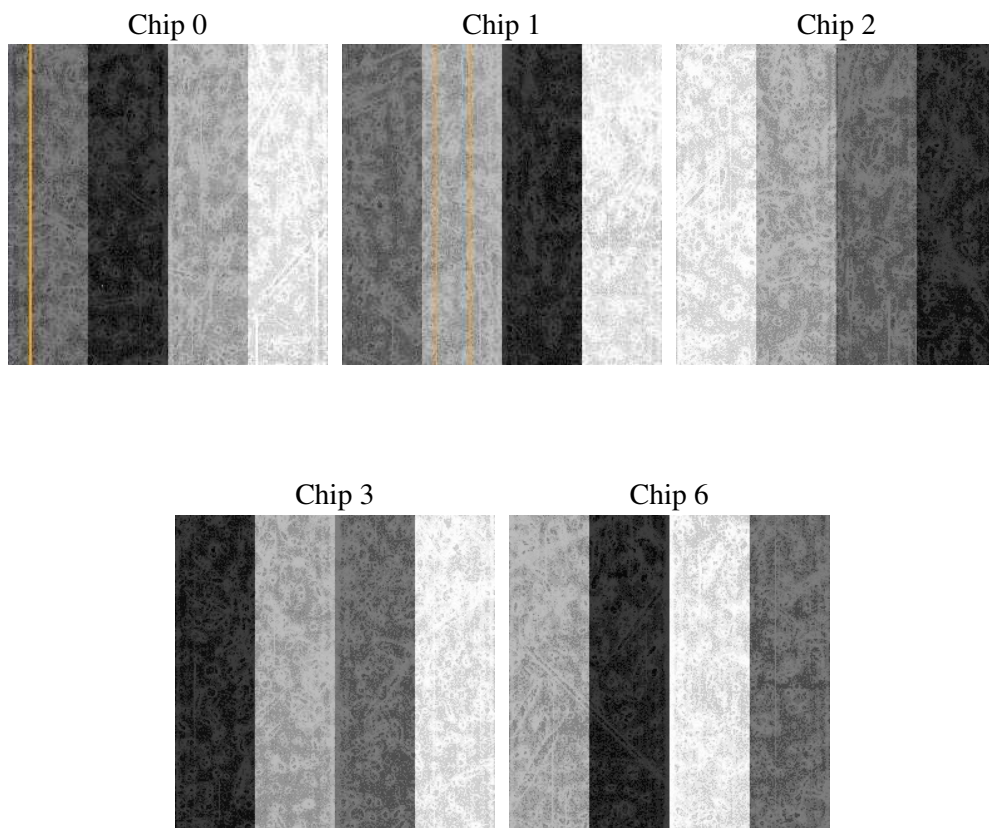
2 OBI

2.1 OBI

2.1.1 Images



2.1.2 Bias



2.1.3 Parameters

obi_num	0
ascdsver	7.6.7.2
caldbver	3.2.1
date	2006-04-29T10:04:24
revision	2

sched_exp_time	50000.000000
ontime	50262.443198413
ontime0	50259.302218169
ontime1	50259.302208185
ontime2	50262.443198413
ontime3	50262.443198413
ontime6	50262.443198413
l1events	2074011

2.1.4 Events

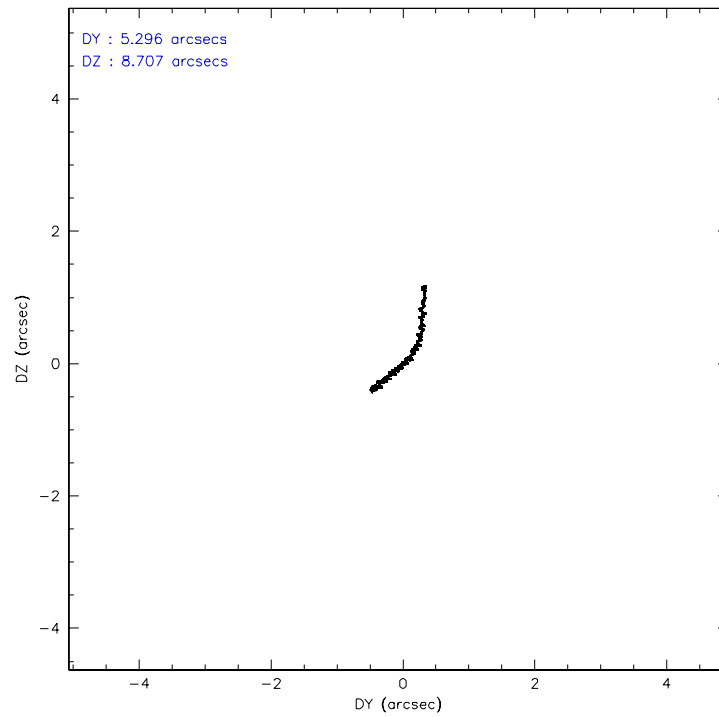
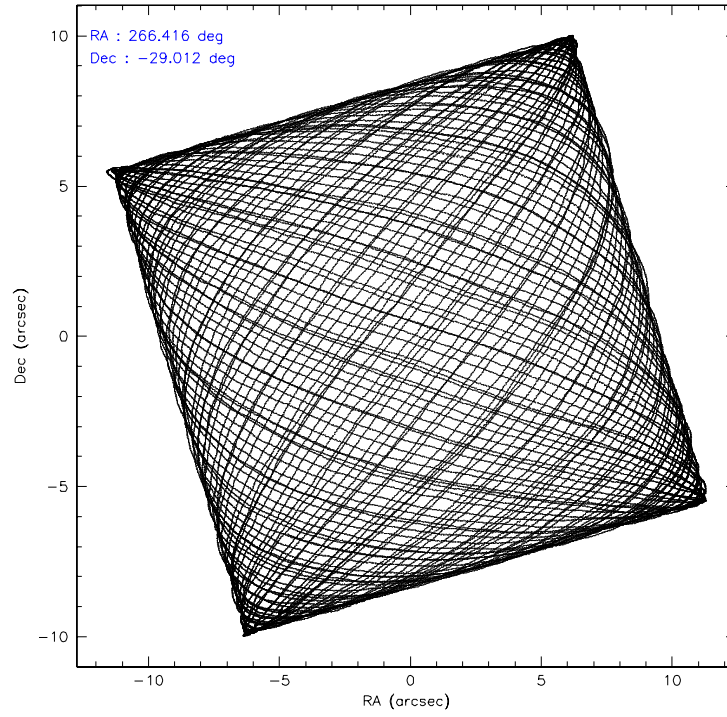
	ccd 0	ccd 1	ccd 2	ccd 3	ccd 6
level 1 events	386726	385295	430245	482086	389659
rejected events	308475	304984	339333	337175	334914
rejected %	79%	79%	78%	69%	85%

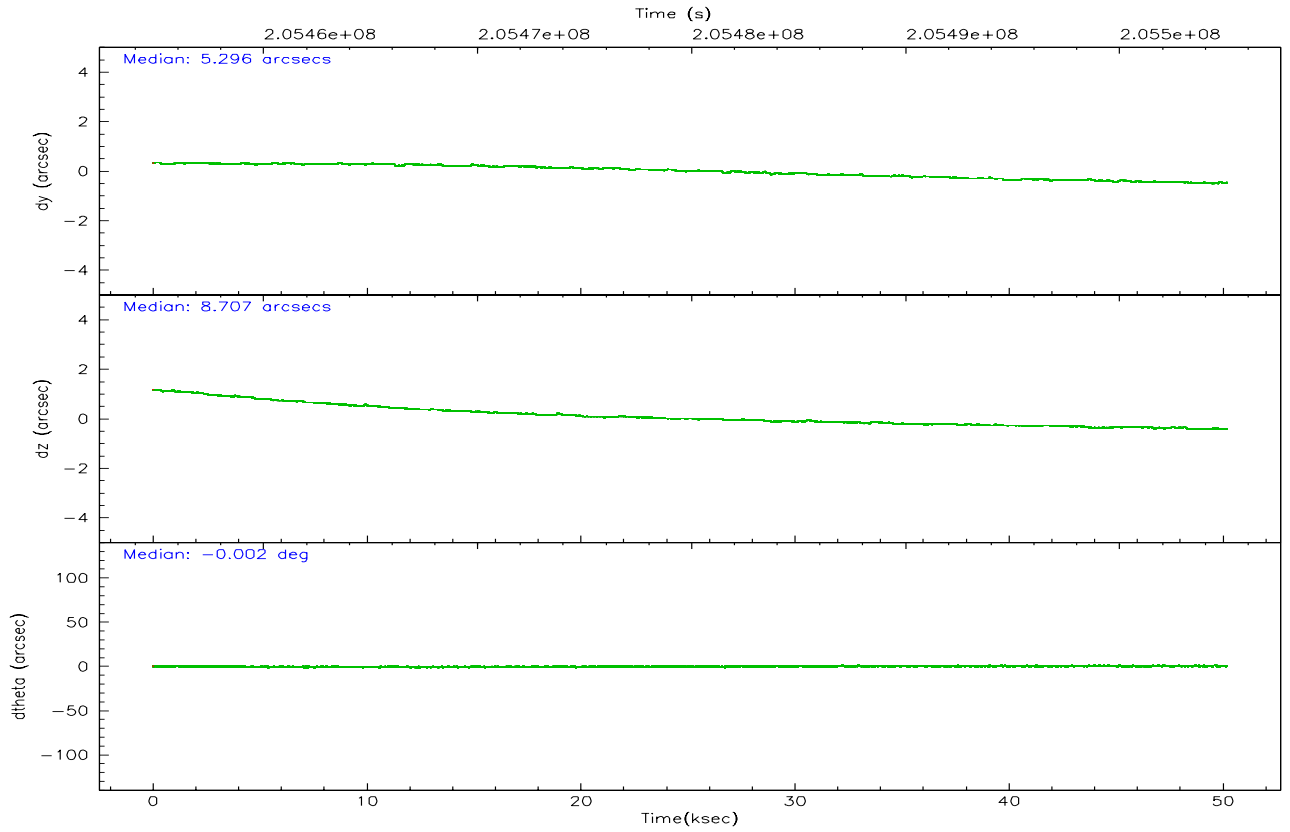
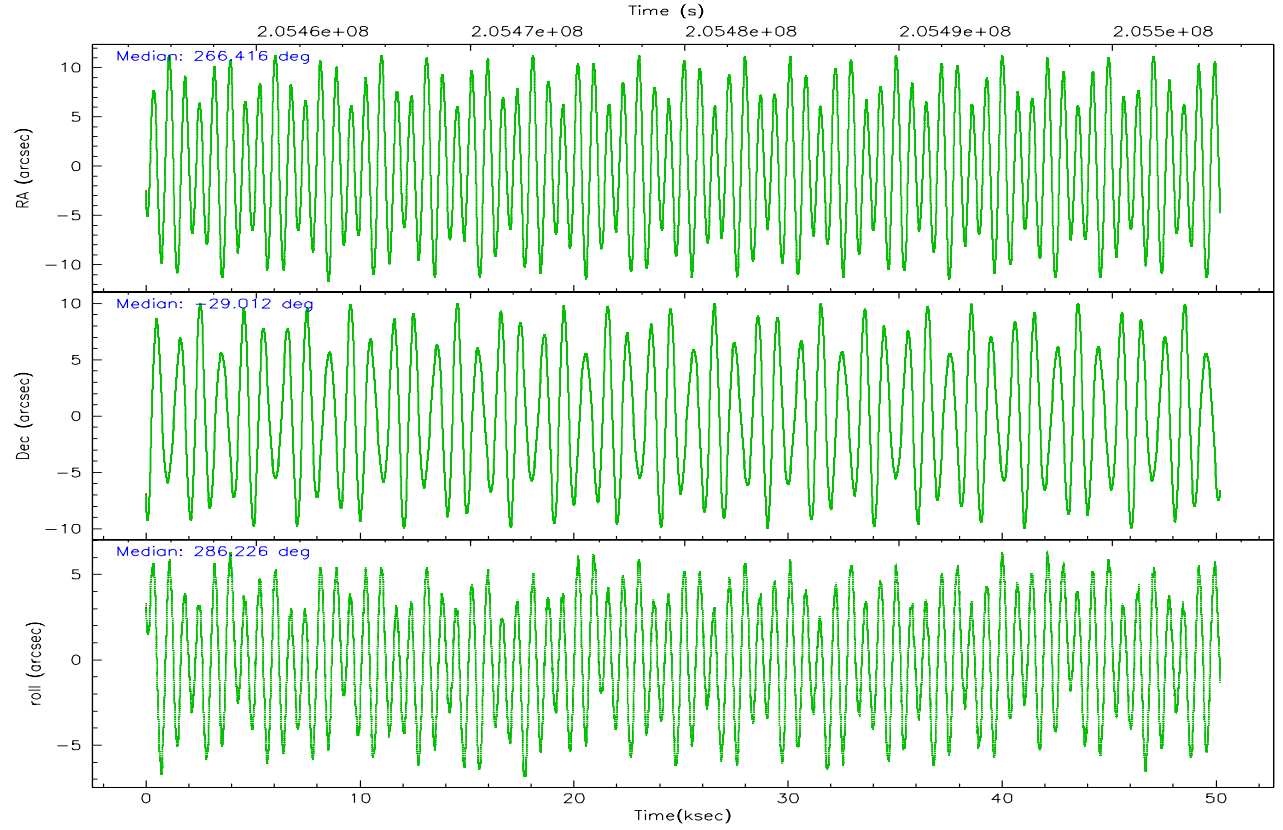
	ccd 0	ccd 1	ccd 2	ccd 3	ccd 6
grade 0 events	41827	41477	52830	89086	24988
	10%	10%	12%	18%	6%
grade 1 events	331	300	449	754	211
	0%	0%	0%	0%	0%
grade 2 events	14099	14800	15025	22367	10525
	3%	3%	3%	4%	2%
grade 3 events	6225	6254	6427	9318	4920
	1%	1%	1%	1%	1%
grade 4 events	5726	6268	6414	9157	4778
	1%	1%	1%	1%	1%
grade 5 events	15518	15919	14978	17563	17080
	4%	4%	3%	3%	4%
grade 6 events	10522	11645	10361	15193	9632
	2%	3%	2%	3%	2%
grade 7 events	292478	288632	323761	318648	317525
	75%	74%	75%	66%	81%

2.2 Compared Parameters

Parameter	Planned	Actual	Parameter	Planned	Actual
Instrument	ACIS	ACIS	Obspar format version number	6	6
Detector	ACIS-01236	ACIS-01236	Obspar file type	PREDICTED	ACTUAL
Grating	NONE	NONE	Obspar update status	NONE	UPDATED
Data mode	FAINT	FAINT	On-chip summing requested	N	N
Observation mode	POINTING	POINTING	Subarray requested	NONE	NONE
Pointing RA	266.393343	266.4160479105042	Alternating exposures requested	N	N
Pointing Dec	-28.993516	-29.01237705560145	Primary exposure time	0.000000	3.1
Pointing Roll	286.014238	286.2339331846317			
Window start time	205455004.184000	205455004.184000			
Window stop time	205504984.184000	205504984.184000			
SIM focus pos (mm)	-0.782348	-0.7809083437167272			
SIM defocus (mm)	0	0.001439871863259334			
SIM translation stage pos (mm)	-233.592463	-233.5874344608287			
SIM translation stage offset (mm)	0	-0.005018542100998502			
Observation start time	205455024.184000	205453991.63286			
Observation start date	2004-07-05T22:49:20	2004-07-05T22:33:11			
Observation end time	205505024.184000	205505809.48516			
Observation end date	2004-07-06T12:42:40	2004-07-06T12:56:49			
Read mode	TIMED	TIMED			

2.3 Aspect



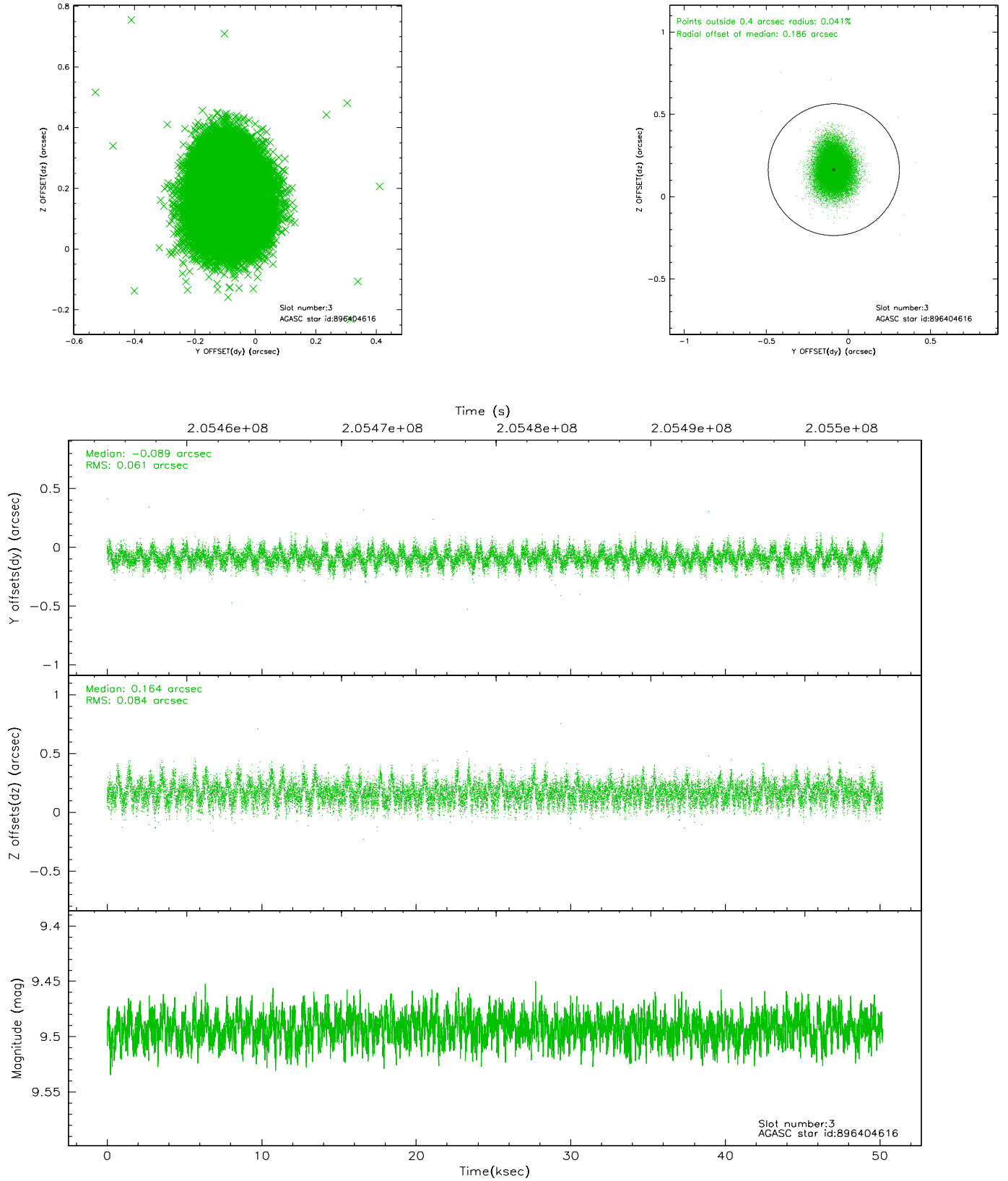


Slot Statistics

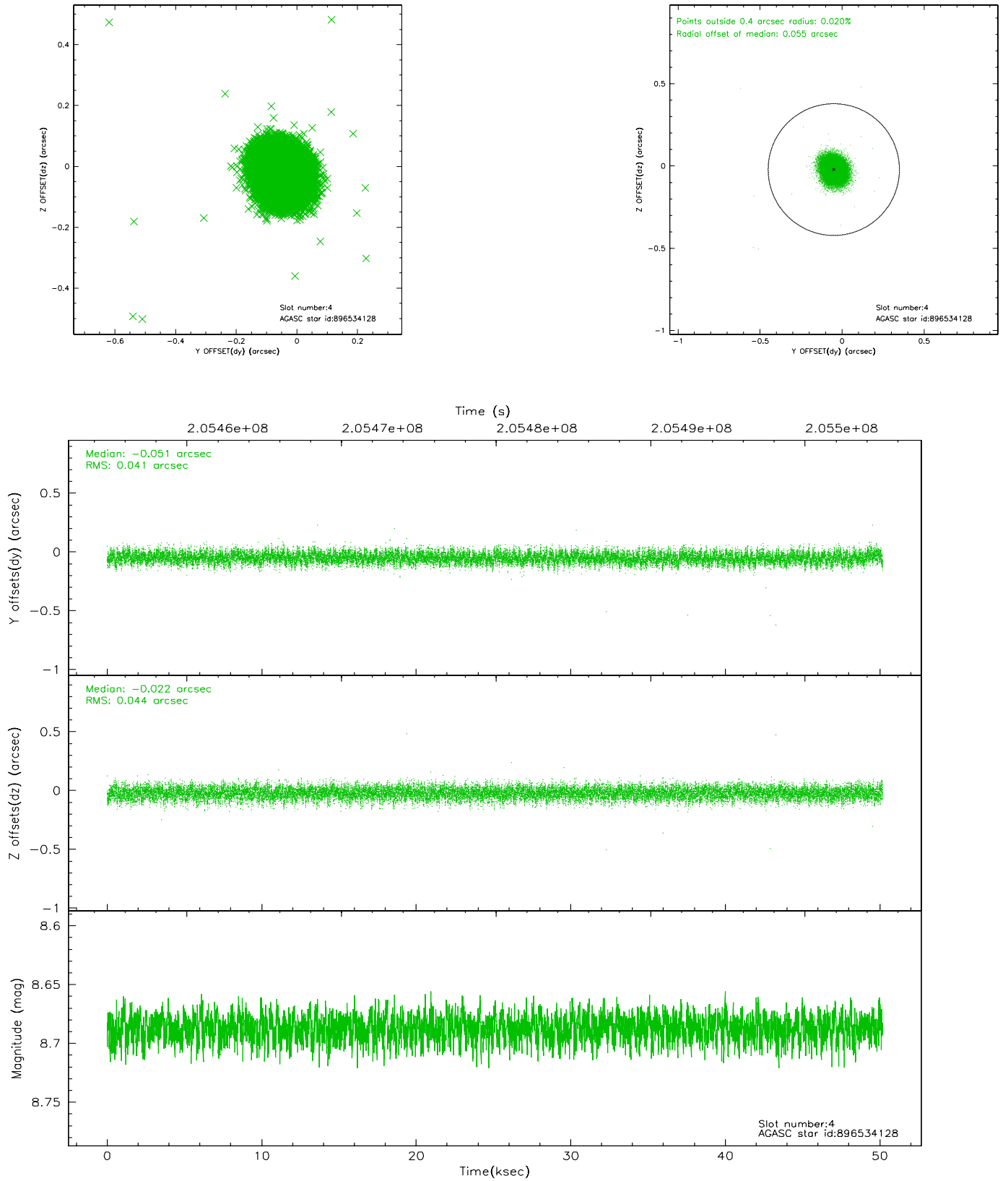
slot	status	id	mag	n_pts	med_dy	med_dz	dr1	dr2	ra	dec	mean_y	mean_z
0	FID	ACIS-I-1	7.24	12241	-0.014	0.068	0.011	0.019	0.000000	0.000000	934.44	-832.19
1	FID	ACIS-I-5	7.22	12242	-0.118	0.029	0.011	0.017	0.000000	0.000000	-1813.79	1065.25
2	FID	ACIS-I-6	7.25	12242	0.040	-0.028	0.013	0.026	0.000000	0.000000	400.04	1709.69
3	GUIDE	896404616	9.49	24470	-0.089	0.164	0.111	0.179	265.524948	-28.708456	-1732.75	-2355.10
4	GUIDE	896534128	8.69	24474	-0.051	-0.022	0.064	0.102	266.503837	-29.080853	398.36	247.51
5	GUIDE	896534664	8.18	24479	0.138	-0.061	0.055	0.089	266.405570	-28.407461	-2016.94	619.15
6	GUIDE	896541576	8.19	24478	-0.098	-0.077	0.071	0.117	267.051055	-28.762912	-220.07	2222.65
7	GUIDE	896403520	9.00	24471	0.098	-0.011	0.088	0.136	265.626481	-28.748780	-1506.48	-2085.53

2.4 Star Slots

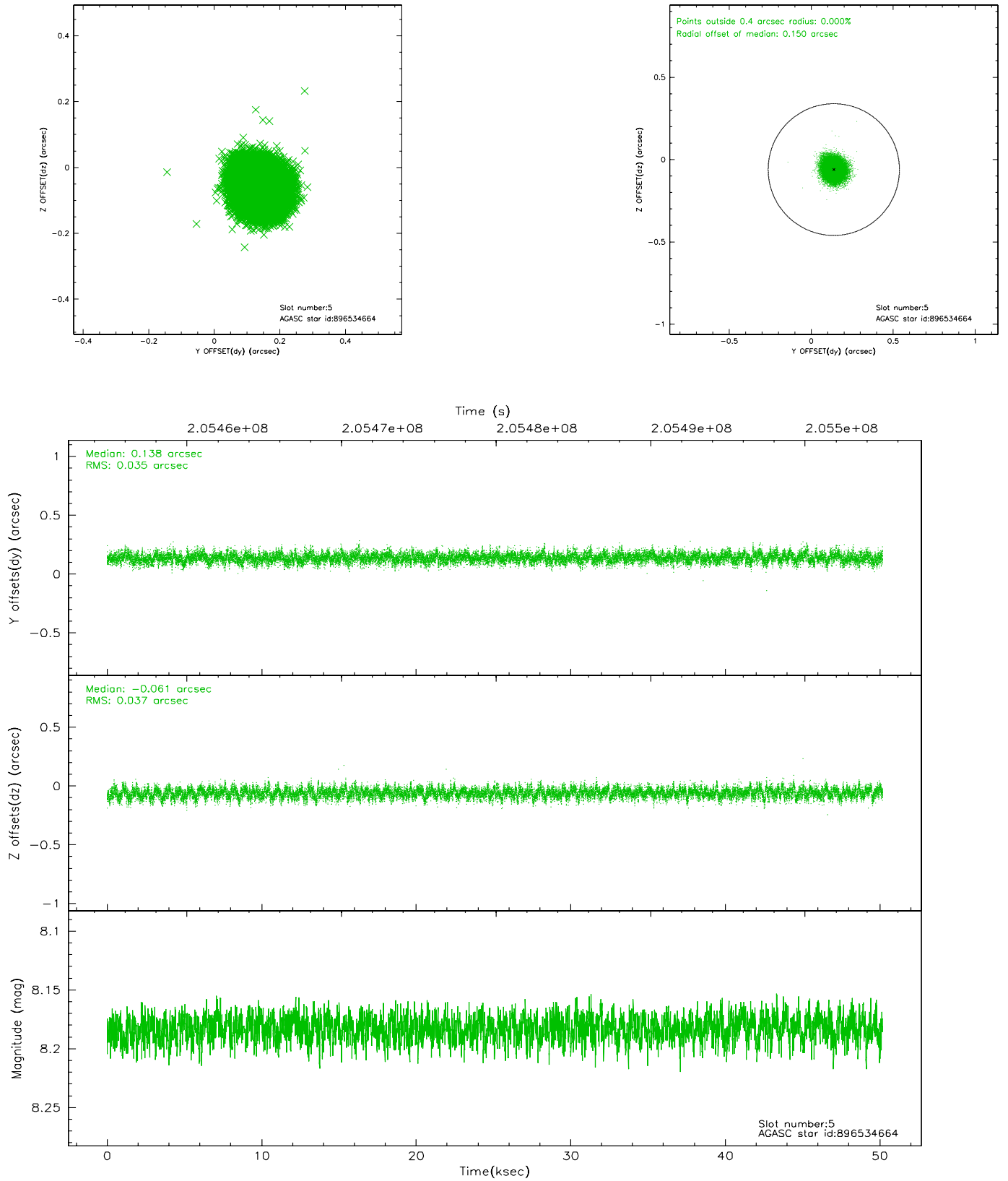
2.4.1 Slot 3



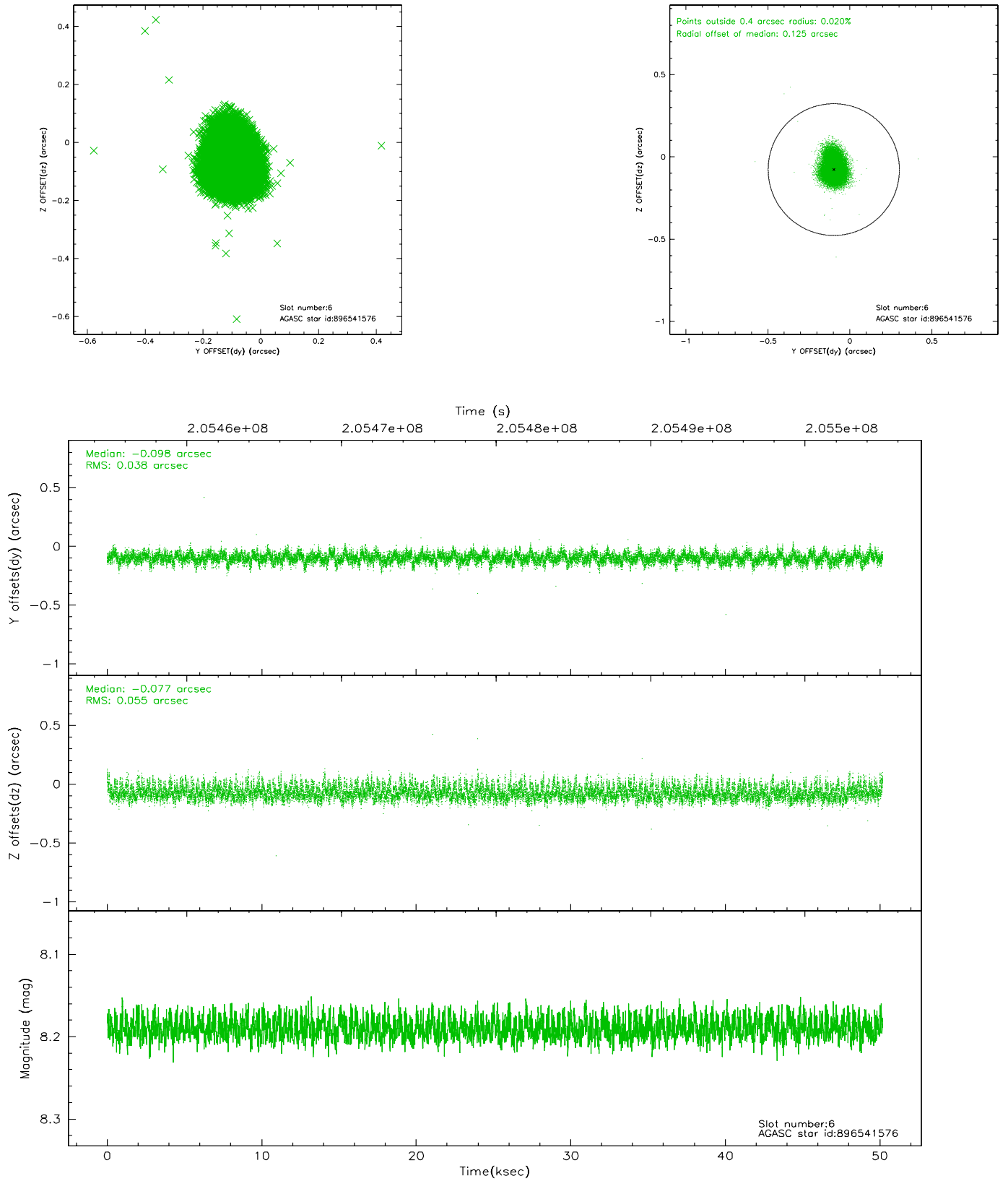
2.4.2 Slot 4



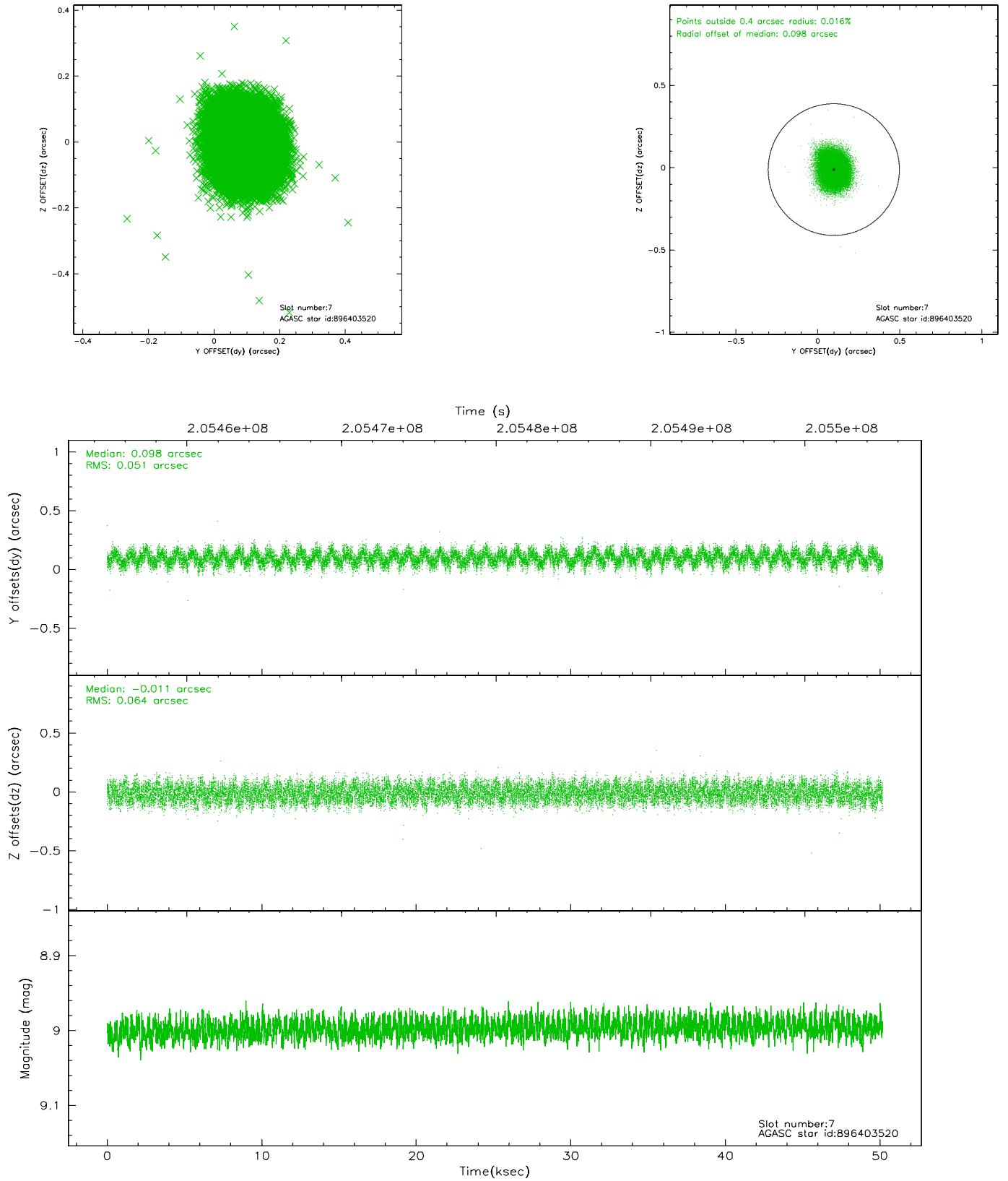
2.4.3 Slot 5



2.4.4 Slot 6

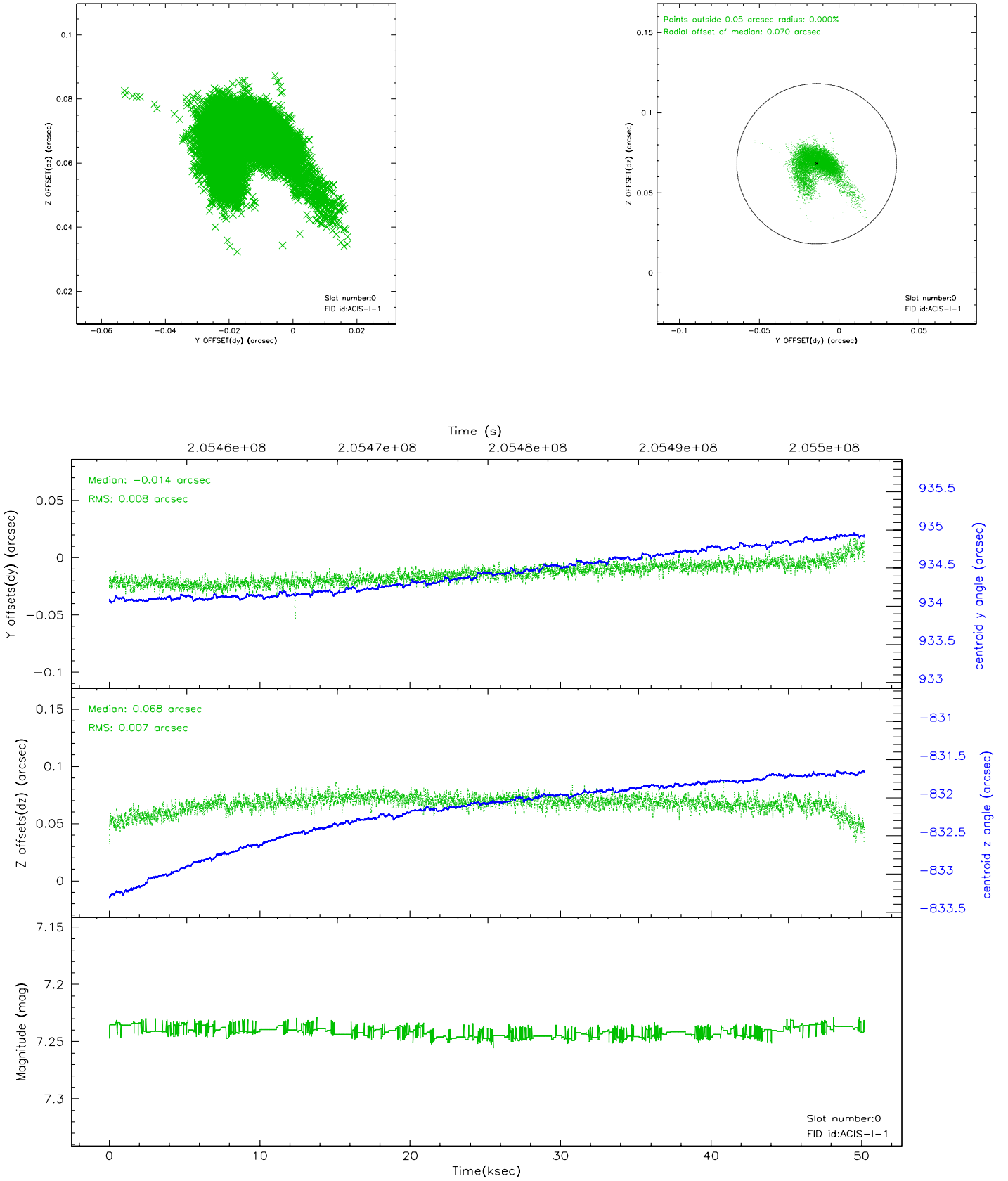


2.4.5 Slot 7

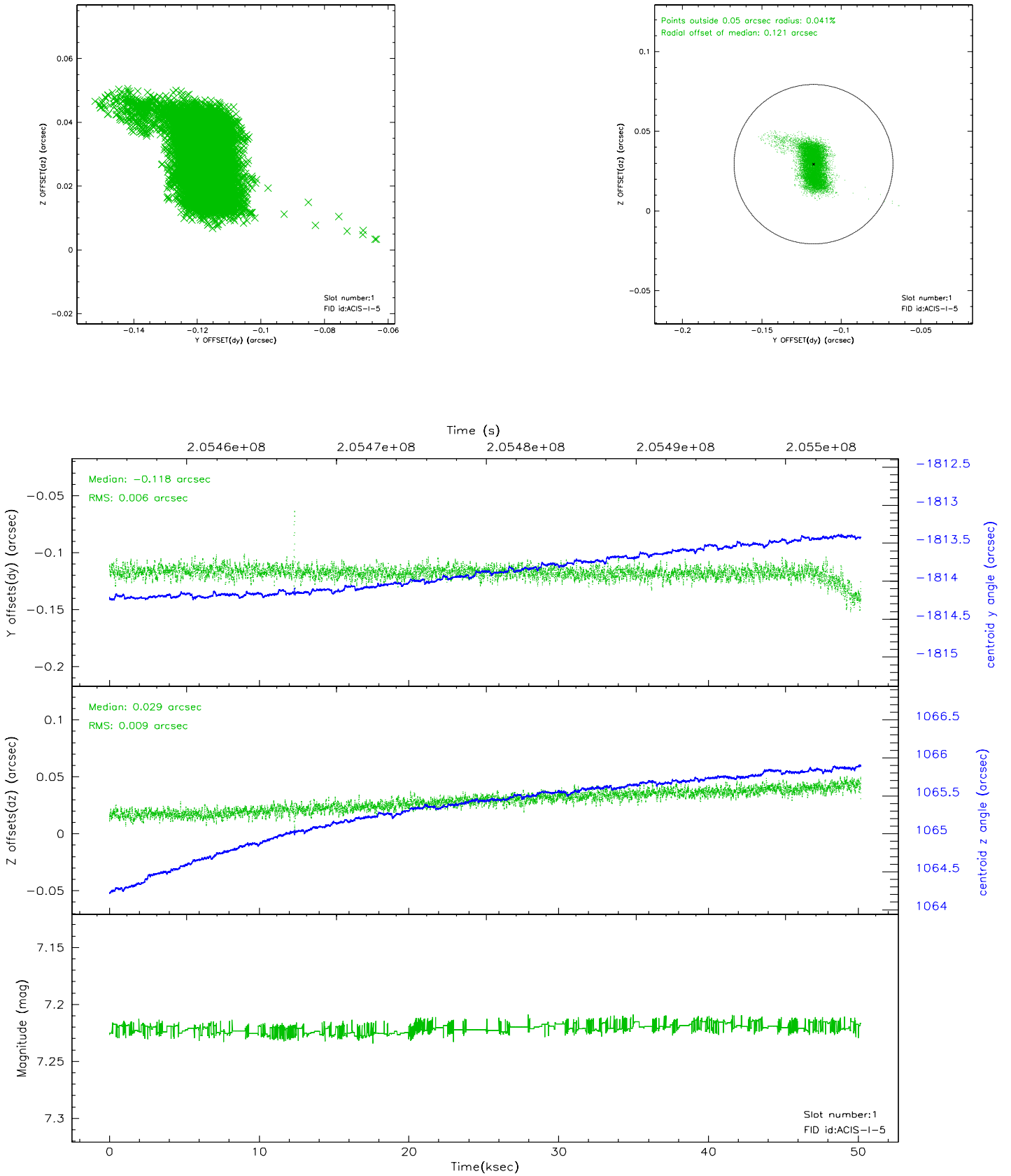


2.5 FID Slots

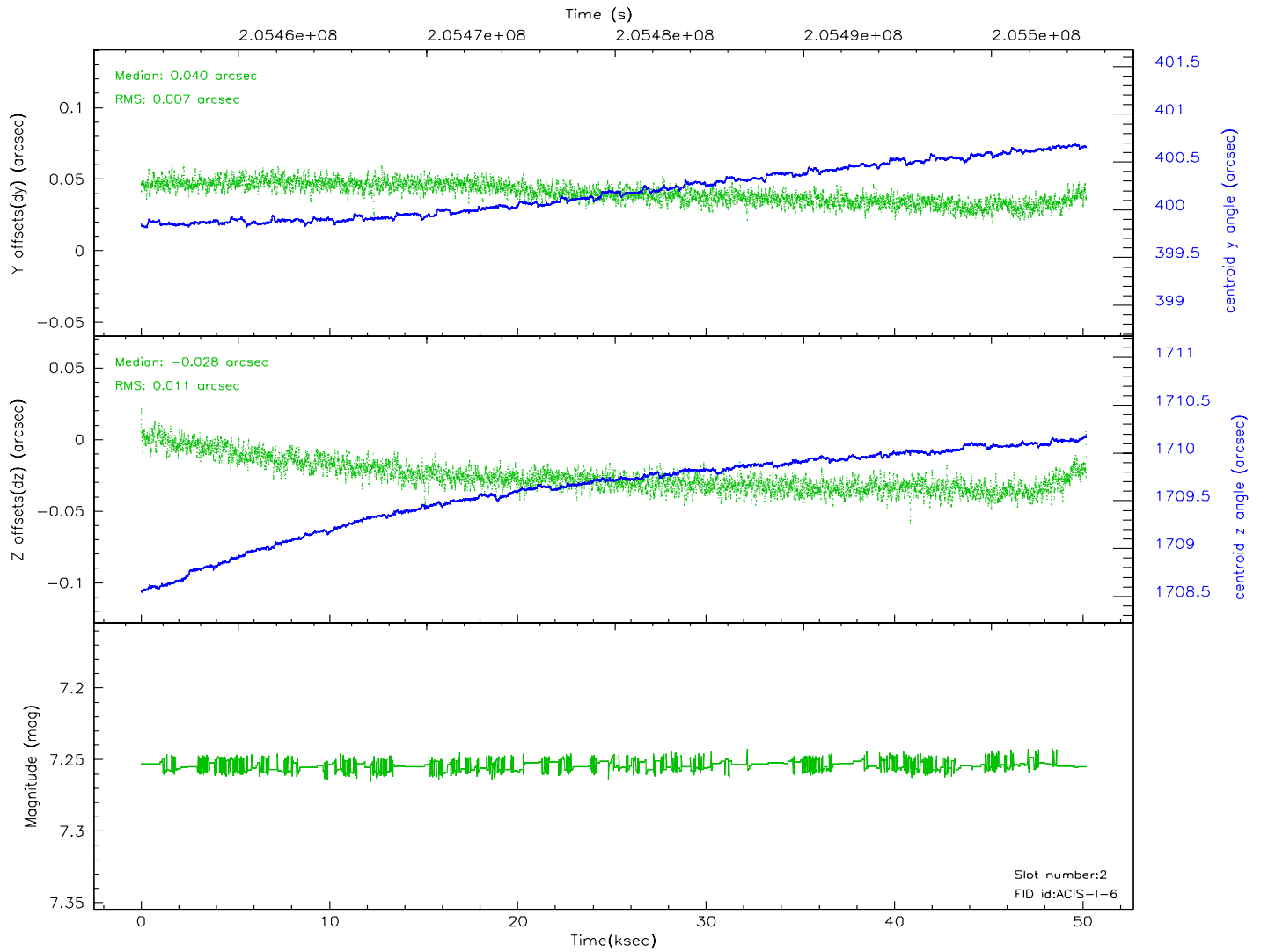
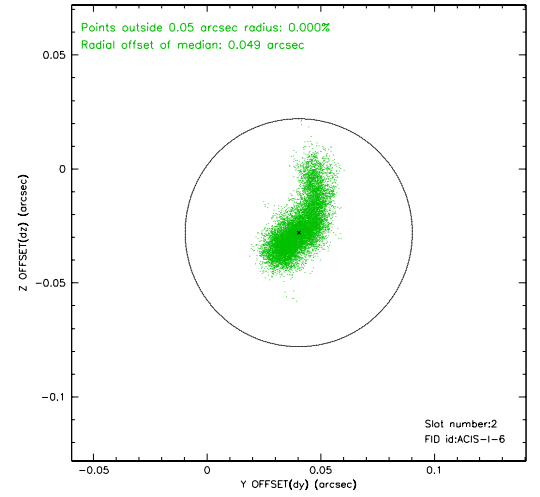
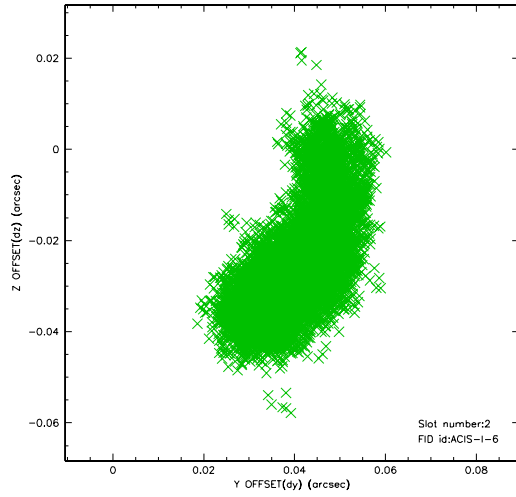
2.5.1 Slot 0



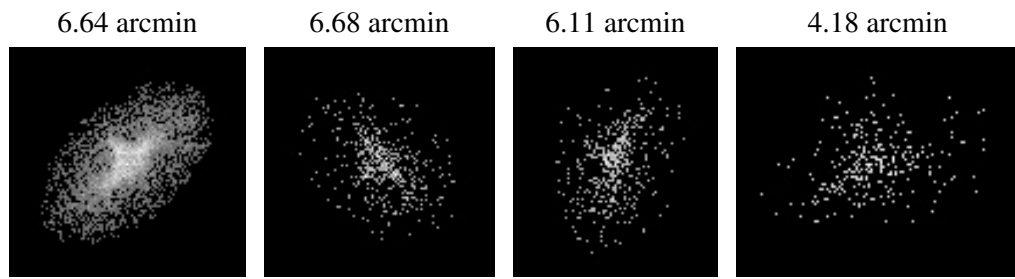
2.5.2 Slot 1



2.5.3 Slot 2



3 Point Sources



A Summary

A.1 Status

V&V Scientist	Jen Lauer
V&V Date (YYYY-MM-DD)	2006.04.30
V&V Edition	1
V&V Disposition and Status	OK
V&V Charge Time	50.179

A.2 Comments

Time constraint met except for first fifteen and last ten minutes of the observation.