

V&V Reference Report

L2 ASCDS Version : 7.6.7.2

Observation 4681 - L2 Version _e1
Chandra X-Ray Center

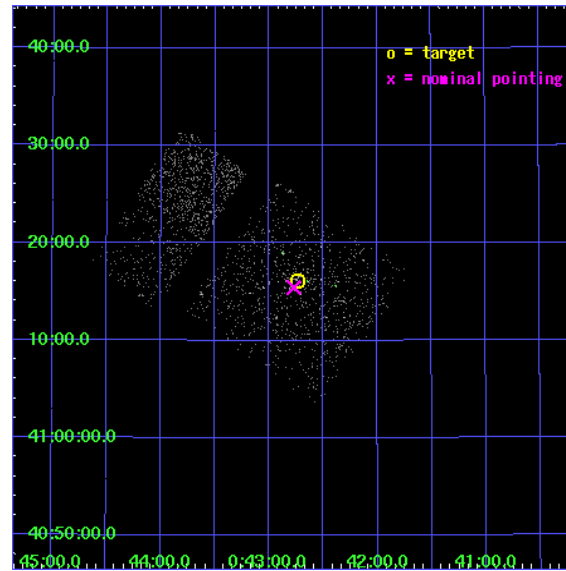
L2 Processing Date : Jun 4 2006

Contents

1	Front	2
2	OBI Primary	3
2.1	OBI	3
2.1.1	Images	3
2.1.2	Bias	3
2.1.3	Parameters	4
2.1.4	Events	4
2.2	Compared Parameters	5
2.3	Aspect	6
2.4	Star Slots	9
2.4.1	Slot 3	9
2.4.2	Slot 4	10
2.4.3	Slot 5	11
2.4.4	Slot 6	12
2.4.5	Slot 7	13
2.5	FID Slots	14
2.5.1	Slot 0	14
2.5.2	Slot 1	15
2.5.3	Slot 2	16
3	OBI Secondary	17
3.1	OBI	17
3.1.1	Images	17
3.1.2	Bias	17
3.1.3	Parameters	18
3.1.4	Events	18
4	Point Sources	19
A	Summary	20
A.1	Status	20
A.2	Comments	20

1 Front

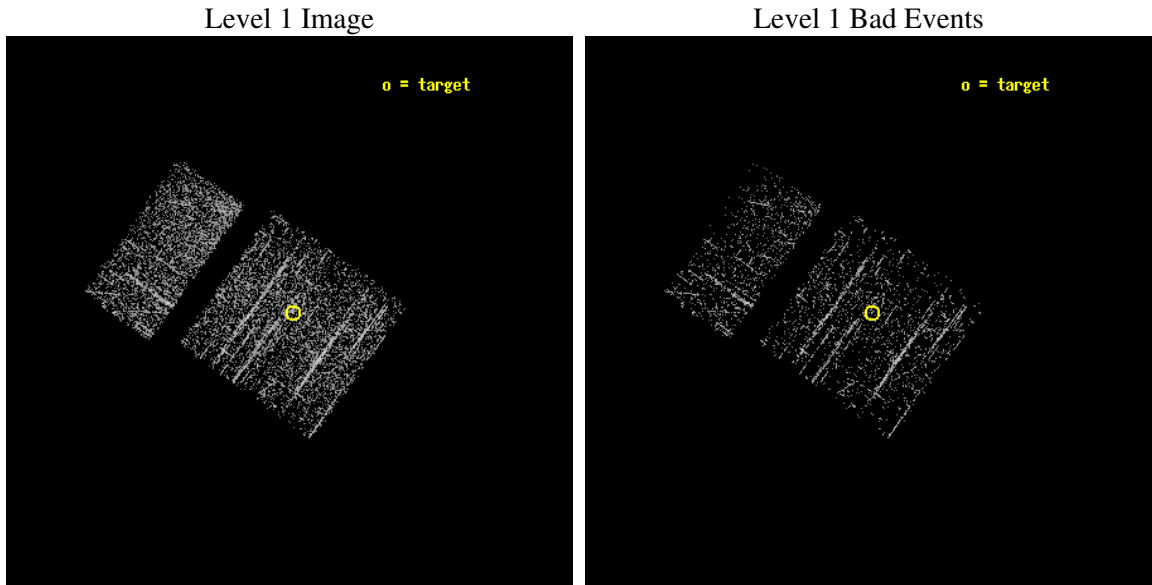
seq_num	600336
obs_id	4681
title	Searching for Black Hole X-ray Nova in M31
observer	Dr. Stephen Murray
object	M31-Center
dtcycle	0
cycle	P
ra_targ	10.685
dec_targ	41.268972
ra_nom	10.6926926049
dec_nom	41.257636106112
roll_nom	305.55059507021
revision	2
ontime	972.90418425202
livetime	153.15858658096
ontime0	973.02730423212
ontime1	972.98626425862
ontime2	972.94522425532
ontime3	972.90418425202
ontime6	972.82210424542
ontime7	972.86314424872
l2events	2239



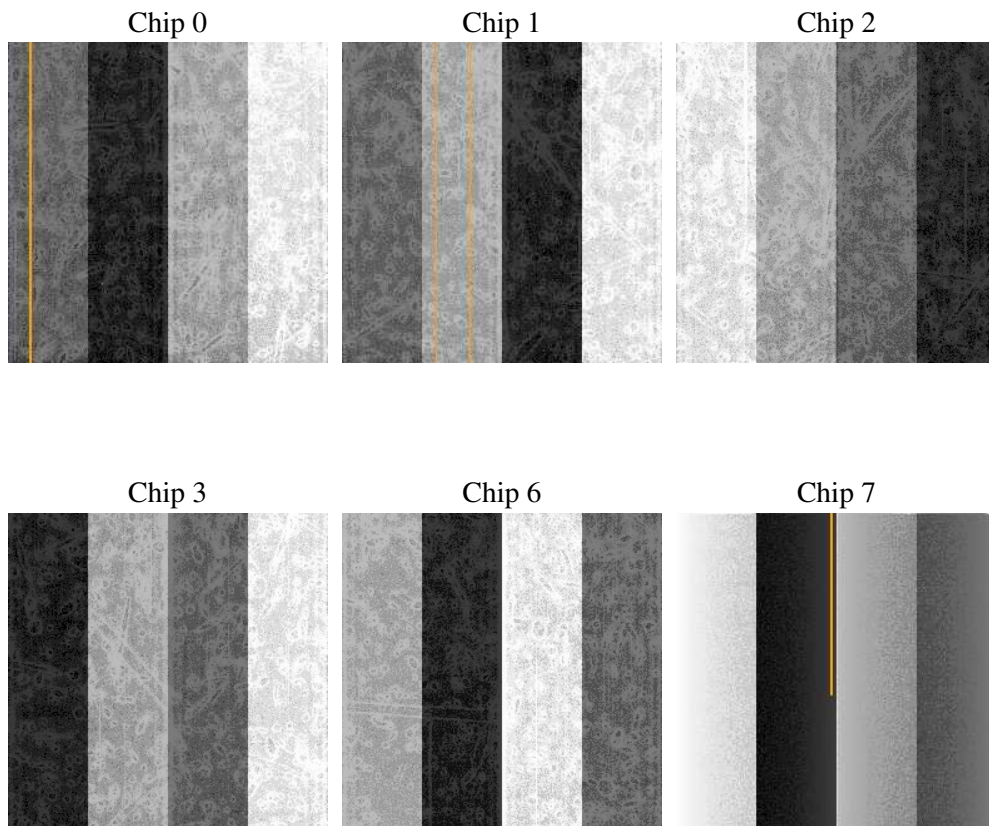
2 OBI Primary

2.1 OBI

2.1.1 Images



2.1.2 Bias



2.1.3 Parameters

obi_num	0
ascdsver	7.6.7.2
caldsver	3.2.2
date	2006-06-04T04:39:46
revision	2

sched_exp_time	5000.000000
ontime	1093.8603204489
ontime0	1093.8603204489
ontime1	1093.8603204489
ontime2	1093.8603204489
ontime3	1093.8603204489
ontime6	1093.8603204489
ontime7	1093.8603204489
l1events	21729

2.1.4 Events

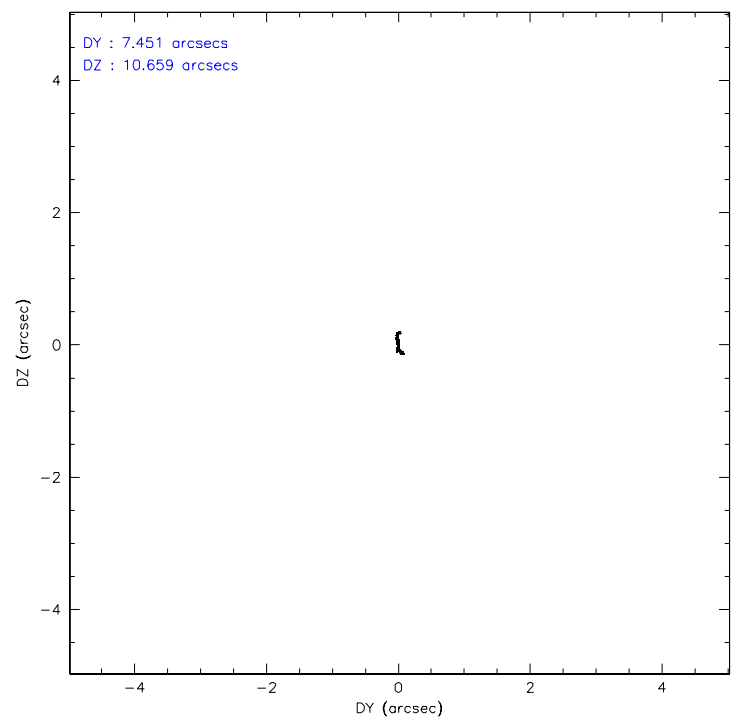
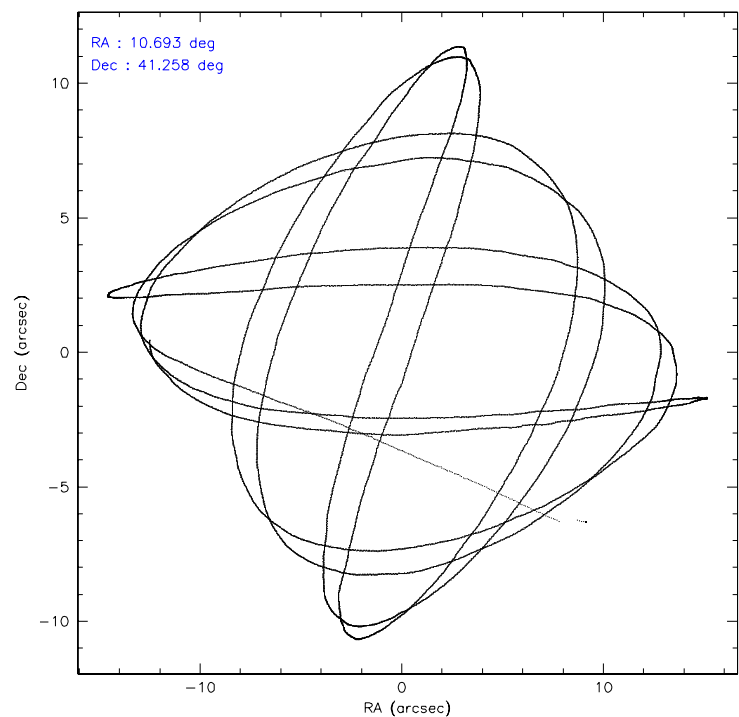
	ccd 0	ccd 1	ccd 2	ccd 3	ccd 6	ccd 7
level 1 events	3313	3523	3987	3494	3766	3646
rejected events	3009	3073	3638	3116	3502	2876
rejected %	90%	87%	91%	89%	92%	78%

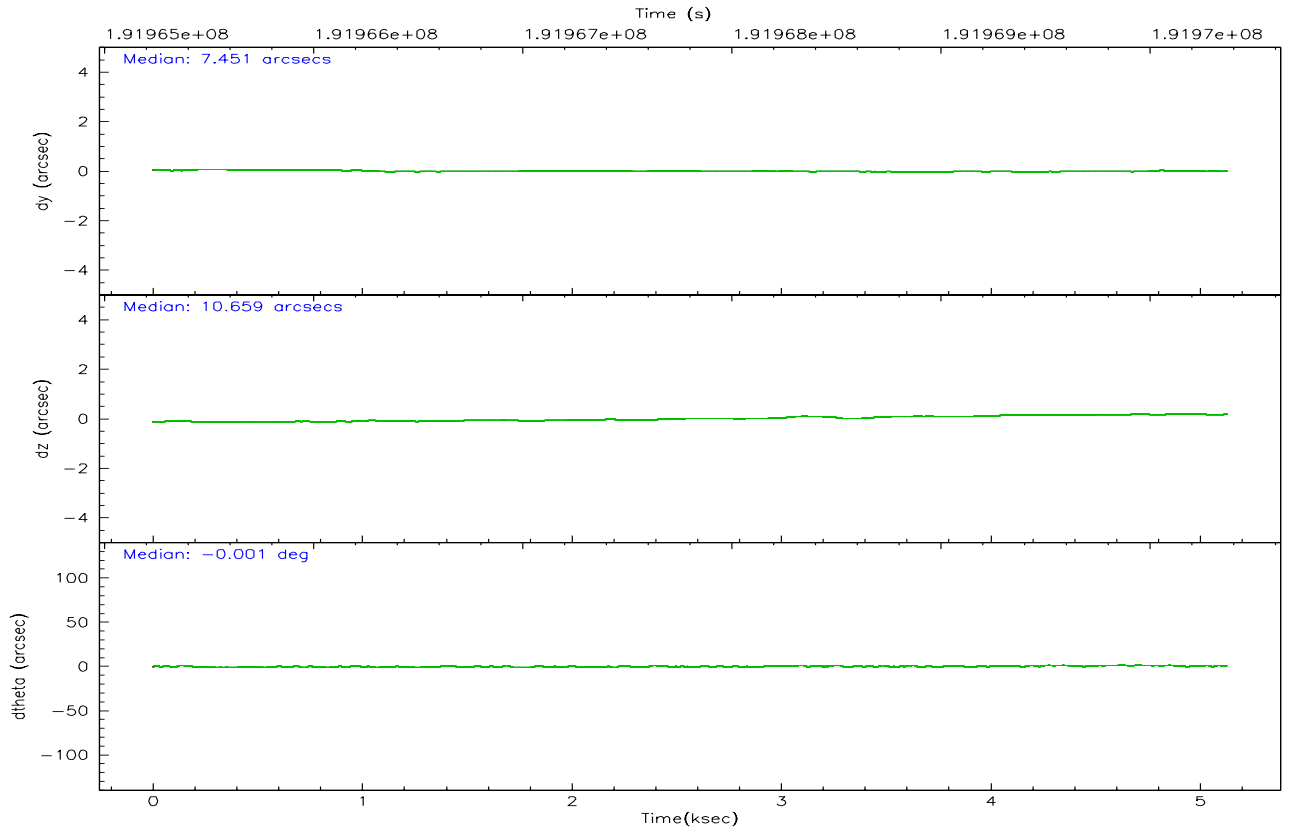
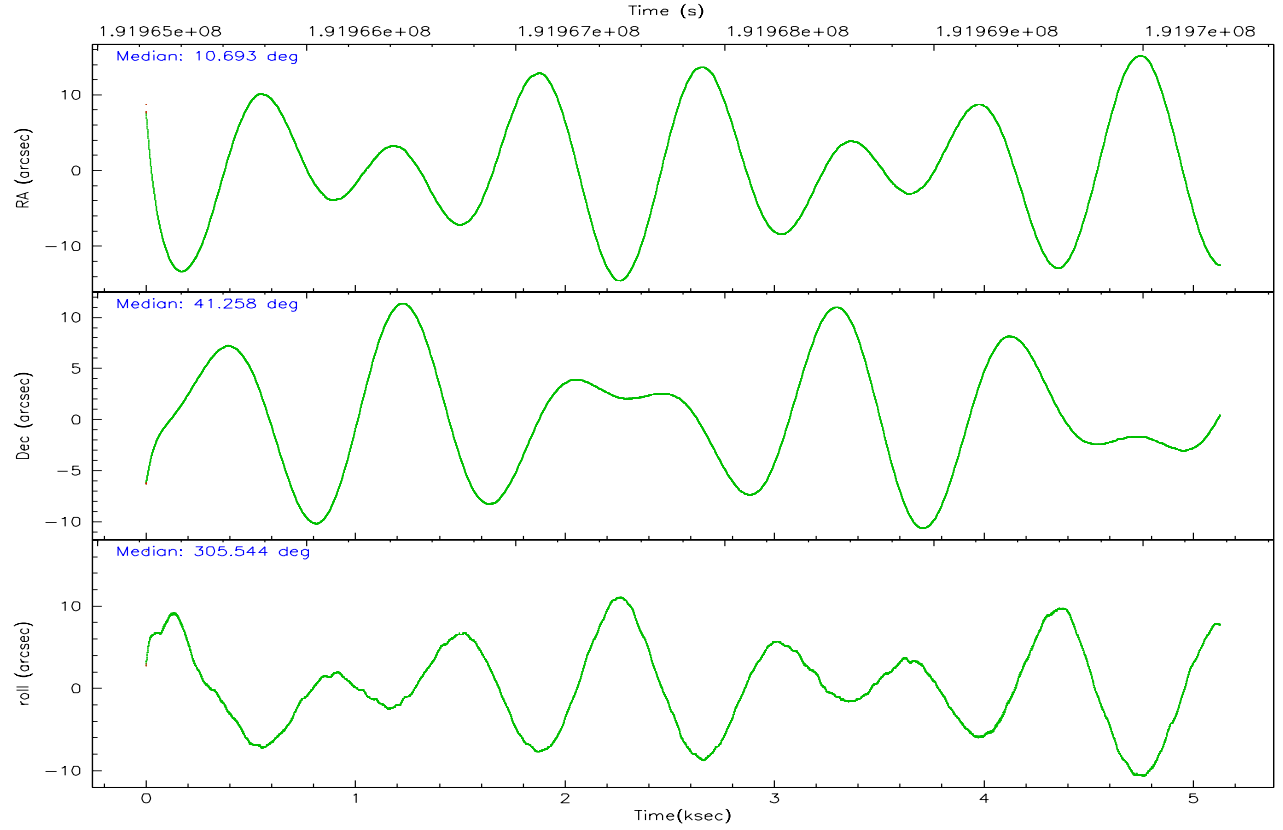
	ccd 0	ccd 1	ccd 2	ccd 3	ccd 6	ccd 7
grade 0 events	197	332	264	341	170	86
	5%	9%	6%	9%	4%	2%
grade 1 events	3	3	2	3	2	1
	0%	0%	0%	0%	0%	0%
grade 2 events	109	108	94	76	78	234
	3%	3%	2%	2%	2%	6%
grade 3 events	40	52	42	47	49	72
	1%	1%	1%	1%	1%	1%
grade 4 events	37	44	47	33	34	63
	1%	1%	1%	0%	0%	1%
grade 5 events	120	85	110	121	126	224
	3%	2%	2%	3%	3%	6%
grade 6 events	76	84	80	65	74	512
	2%	2%	2%	1%	1%	14%
grade 7 events	2731	2815	3348	2808	3233	2454
	82%	79%	83%	80%	85%	67%

2.2 Compared Parameters

Parameter	Planned	Actual	Parameter	Planned	Actual
Instrument	ACIS	ACIS	Obspar format version number	6	6
Detector	ACIS-012367	ACIS-012367	Obspar file type	PREDICTED	ACTUAL
Grating	NONE	NONE	Obspar update status	NONE	UPDATED
Data mode	FAINT	FAINT	On-chip summing requested	N	N
Observation mode	POINTING	POINTING	Subarray requested	NONE	NONE
Pointing RA	10.659535	10.6926926048995	Alternating exposures requested	Y	Y
Pointing Dec	41.268875	41.25763610611224	Primary exposure time	0.600000	0.6
Pointing Roll	305.363759	305.5505950702119	Secondary exposure time	3.200000	3.2
Window start time	191203264.184000	191203264.184000	Duty cycle	5	5
Window stop time	192067264.184000	192067264.184000			
SIM focus pos (mm)	-0.782348	-0.7809083437167272			
SIM defocus (mm)	0	0.001439871863259334			
SIM translation stage pos (mm)	-233.592463	-233.5874344608287			
SIM translation stage offset (mm)	0	-0.005018542100998502			
Observation start time	191965362.184000	191963968.60148			
Observation start date	2004-01-31T19:41:38	2004-01-31T19:19:28			
Observation end time	191970362.184000	191971212.27679			
Observation end date	2004-01-31T21:04:58	2004-01-31T21:20:12			
Read mode	TIMED	TIMED			

2.3 Aspect



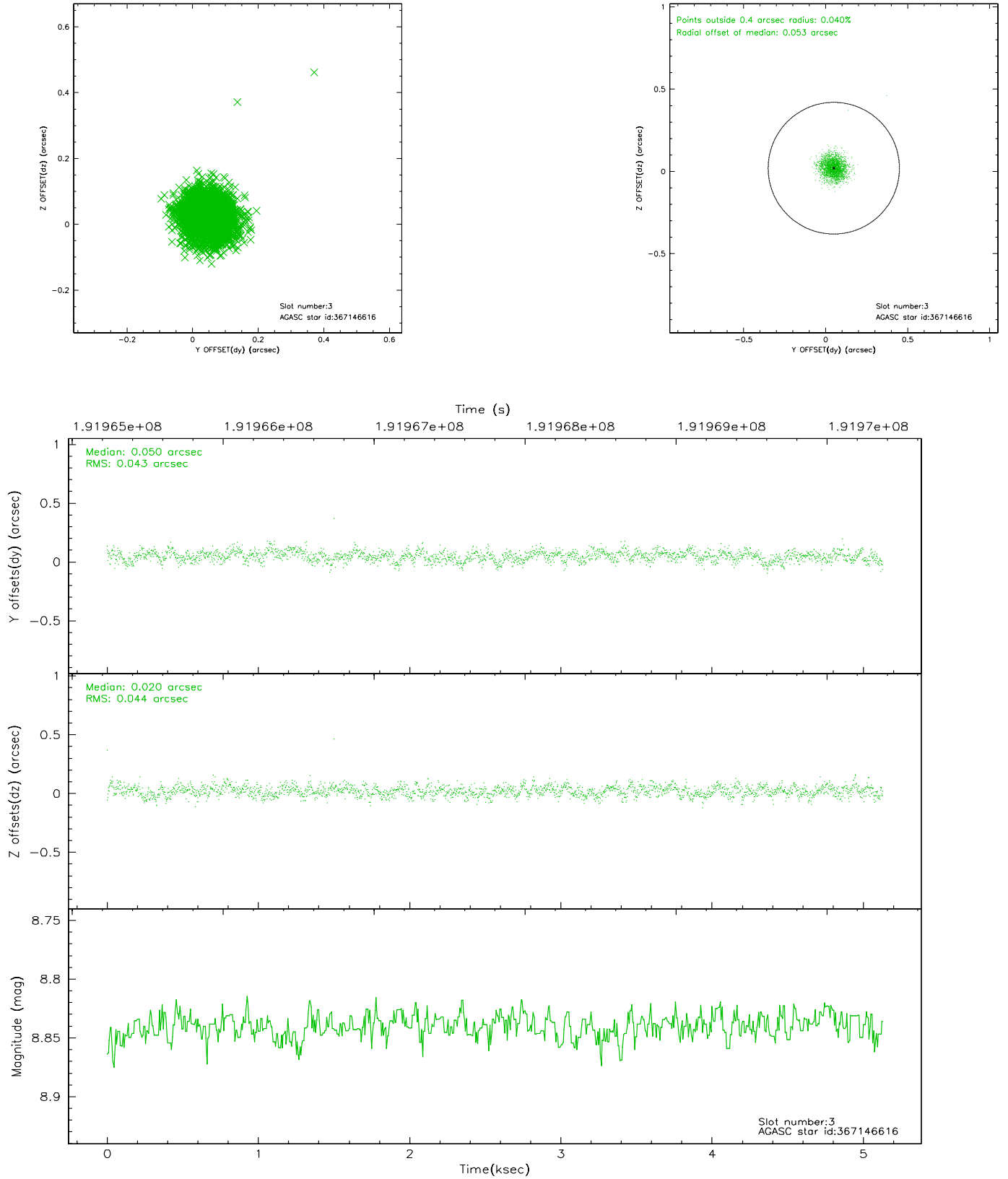


Slot Statistics

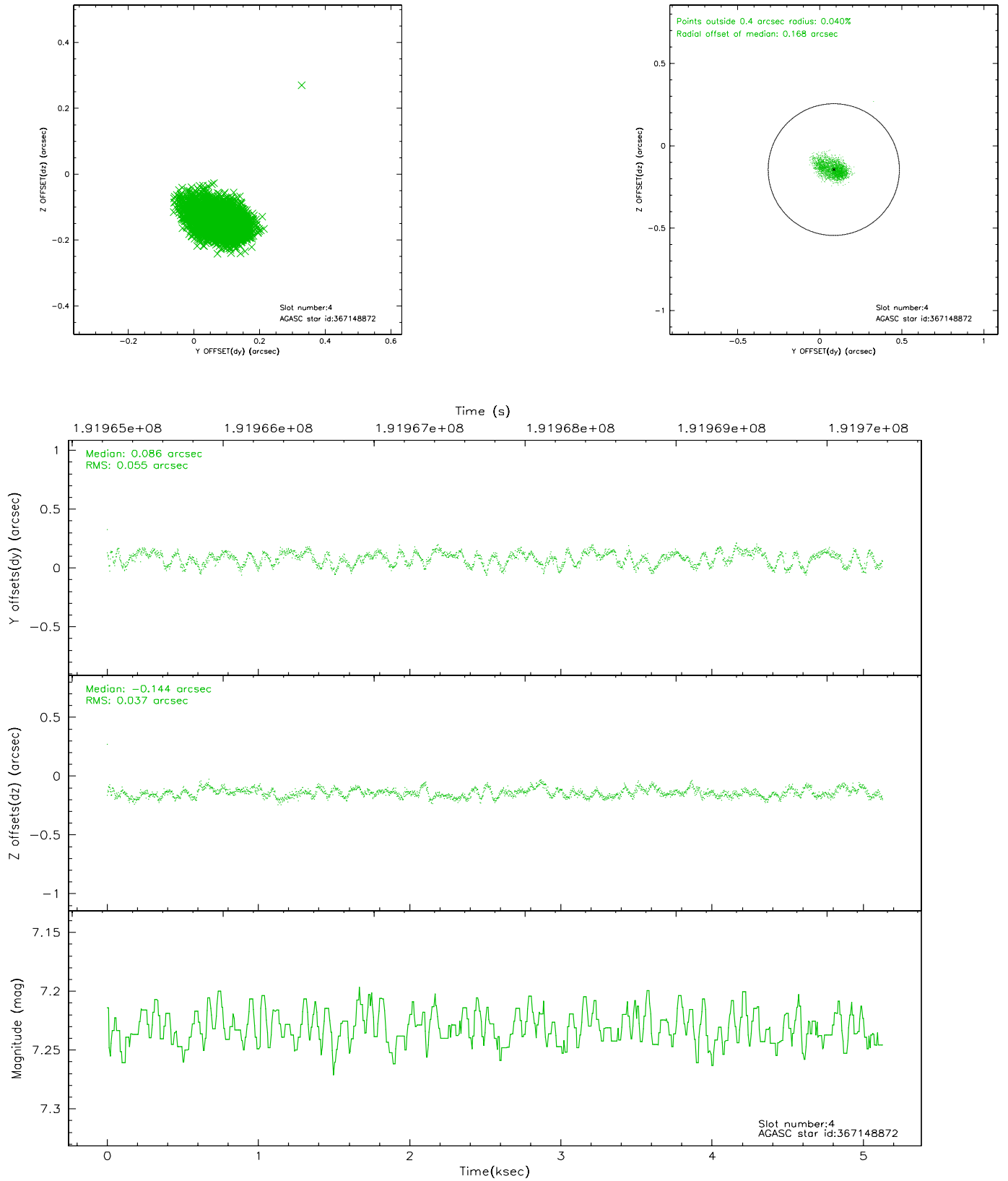
slot	status	id	mag	n_pts	med_dy	med_dz	dr1	dr2	ra	dec	mean_y	mean_z
0	FID	ACIS-I-1	7.23	1252	0.001	0.021	0.009	0.015	0.000000	0.000000	932.20	-834.15
1	FID	ACIS-I-5	7.22	1252	-0.129	0.031	0.007	0.011	0.000000	0.000000	-1815.35	1062.79
2	FID	ACIS-I-6	7.25	1251	0.037	0.018	0.008	0.012	0.000000	0.000000	396.53	1708.60
3	GUIDE	367146616	8.84	2503	0.050	0.020	0.065	0.102	11.418645	41.190163	1414.19	1518.71
4	GUIDE	367148872	7.23	2503	0.086	-0.144	0.070	0.112	10.505940	40.688258	1462.93	-1550.79
5	GUIDE	367657896	9.01	2500	-0.009	0.065	0.089	0.140	11.197765	41.313576	708.16	1282.38
6	GUIDE	367663272	9.29	2502	-0.097	0.026	0.072	0.120	10.656279	41.699429	-1268.74	890.26
7	GUIDE	367674552	8.84	2501	-0.019	0.029	0.075	0.120	11.016238	41.570845	-332.42	1414.38

2.4 Star Slots

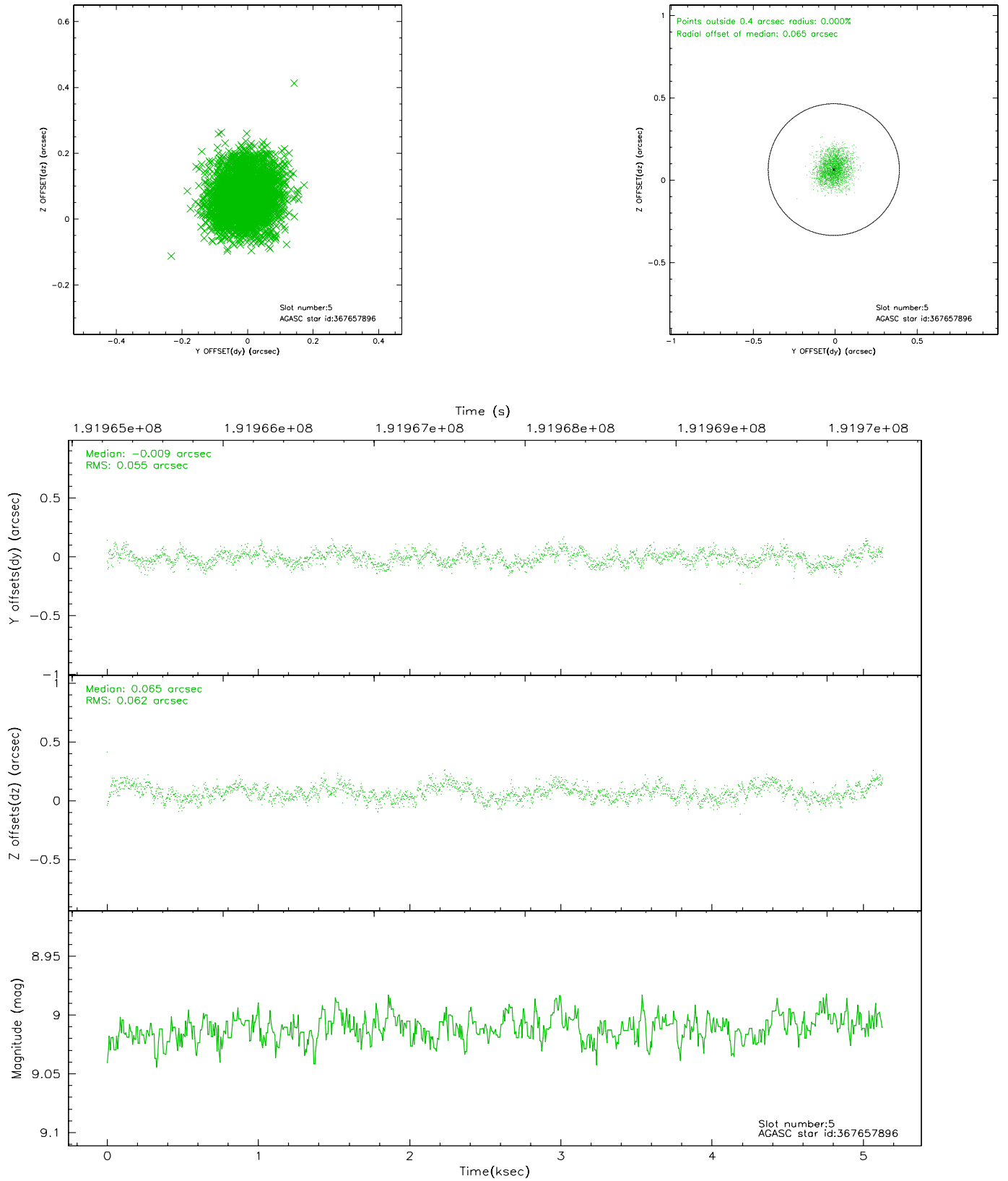
2.4.1 Slot 3



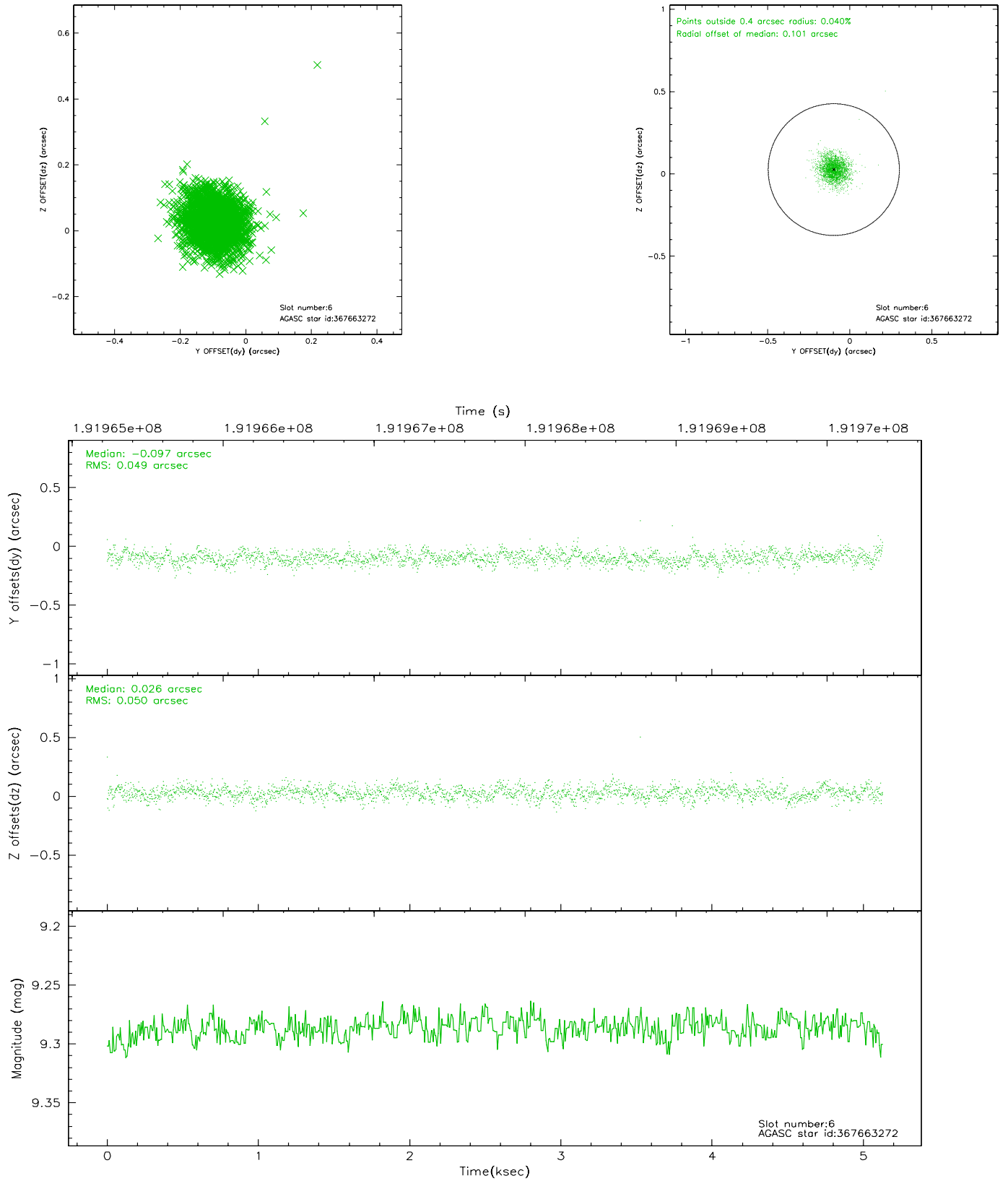
2.4.2 Slot 4



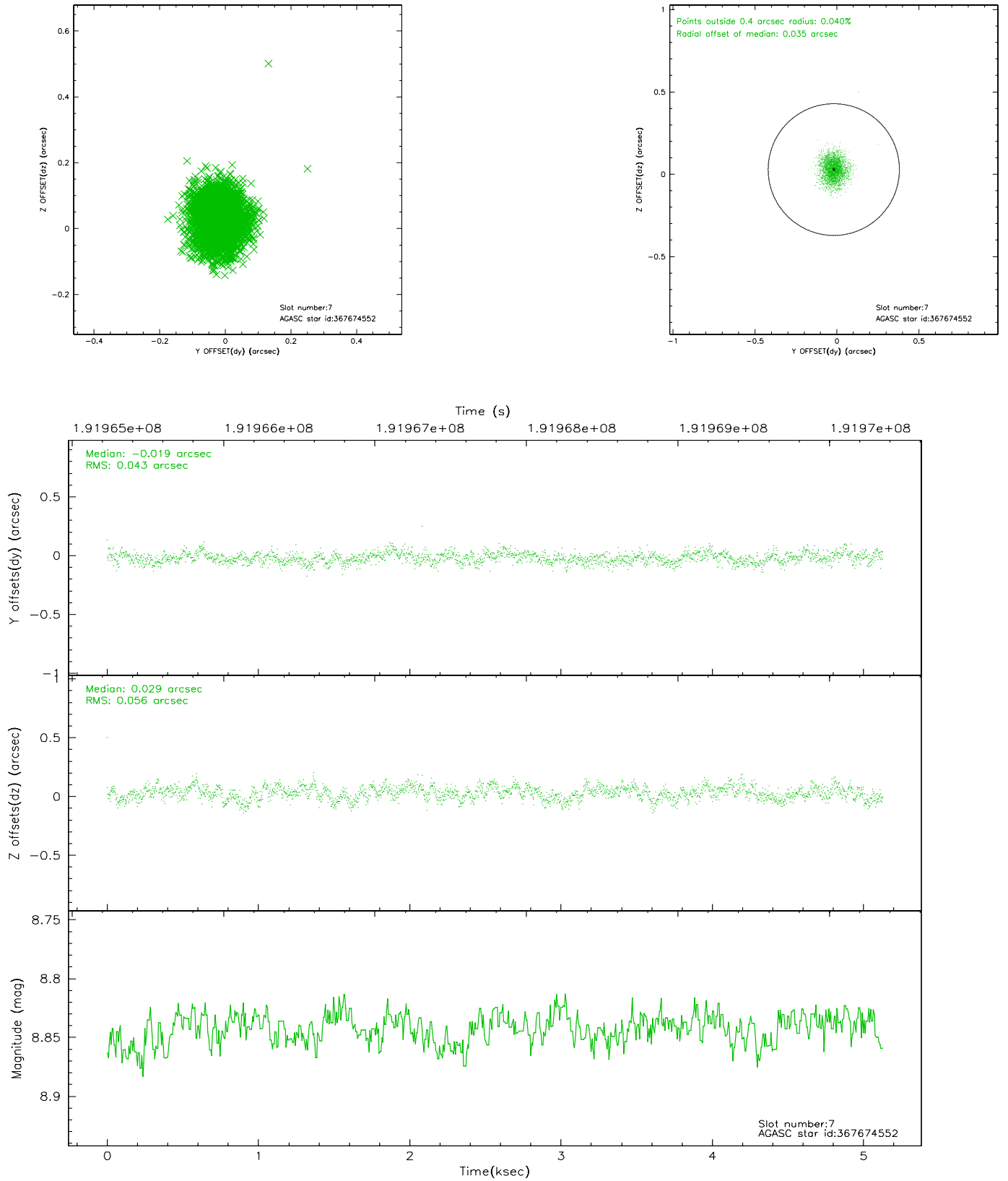
2.4.3 Slot 5



2.4.4 Slot 6

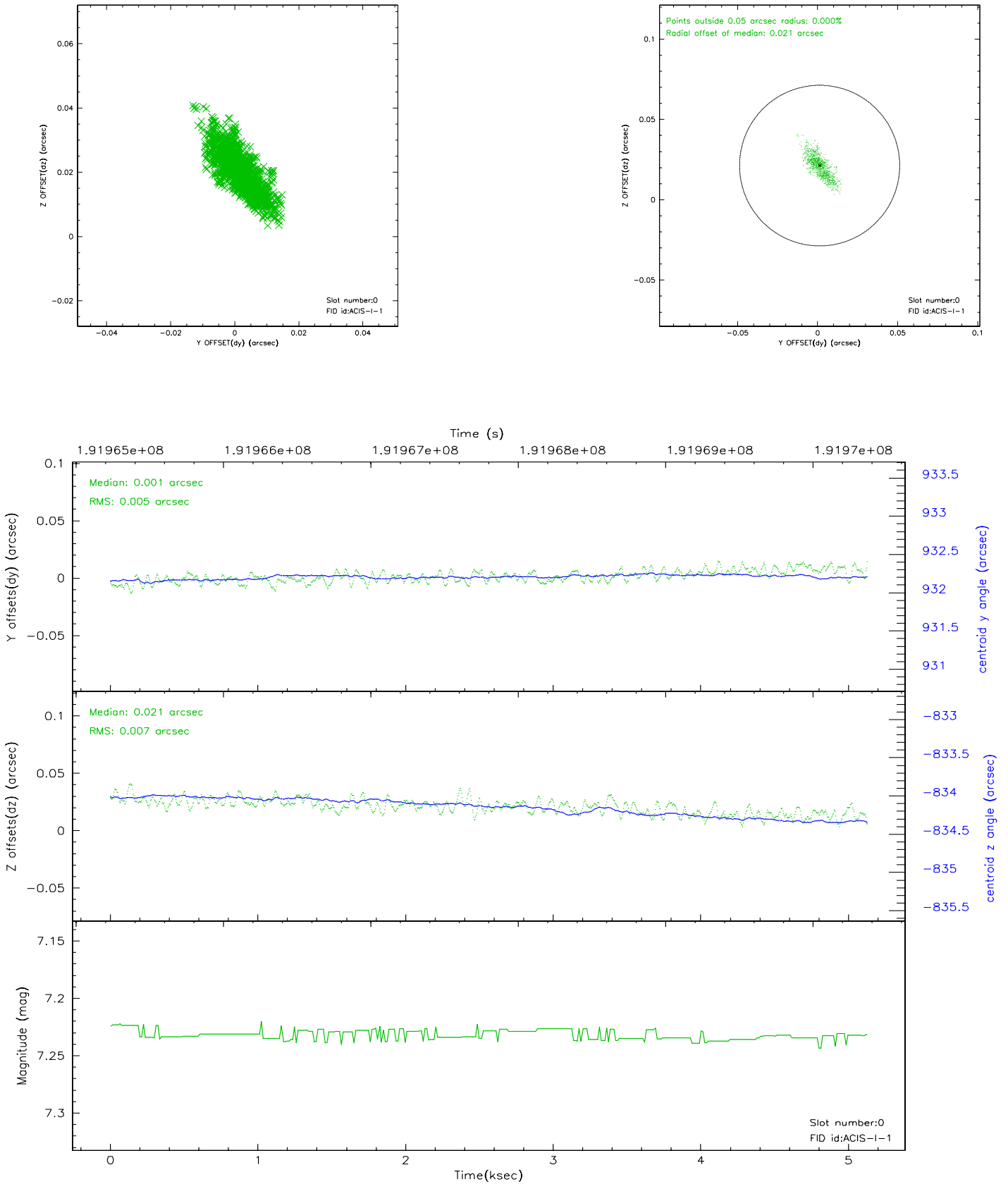


2.4.5 Slot 7

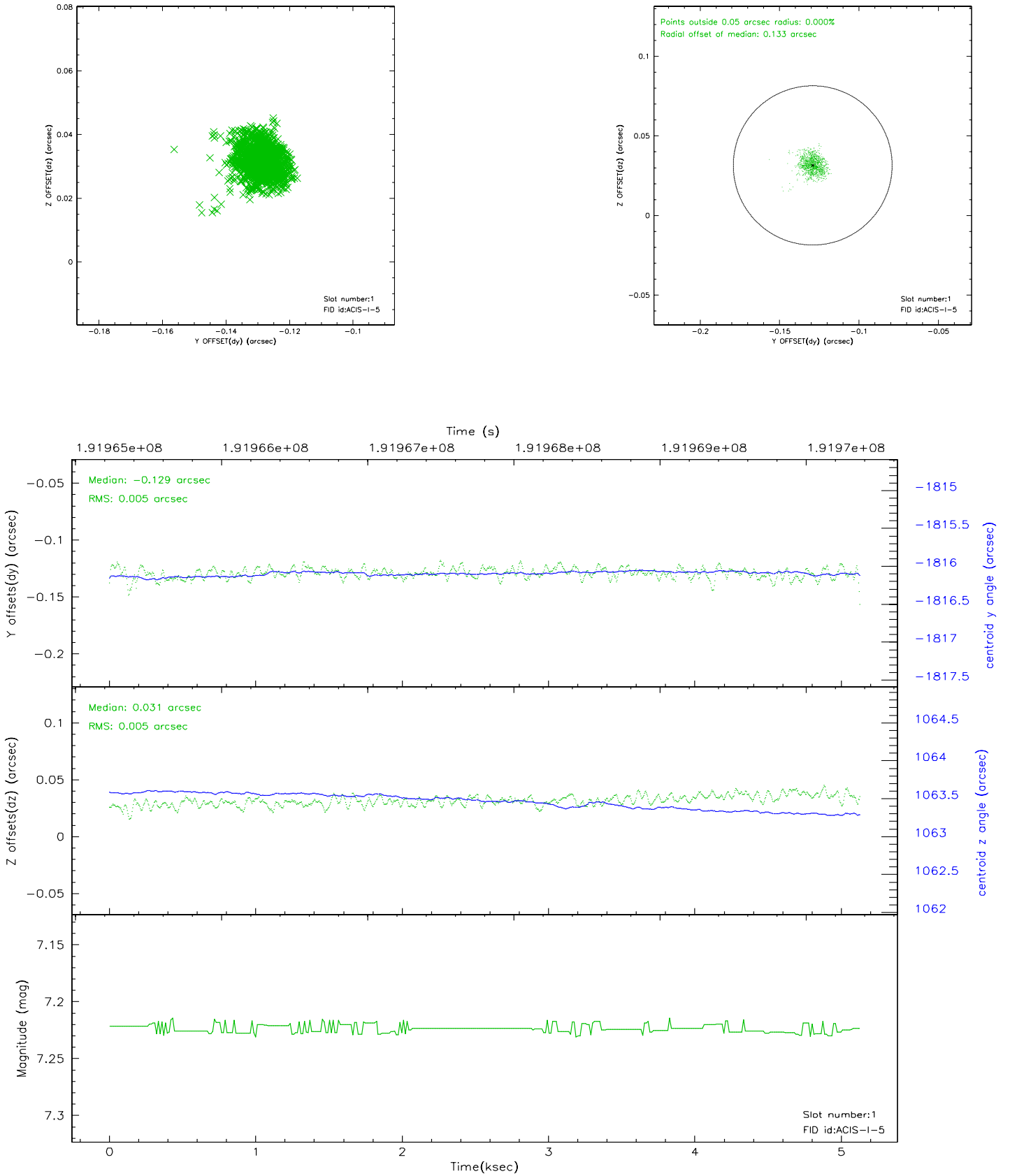


2.5 FID Slots

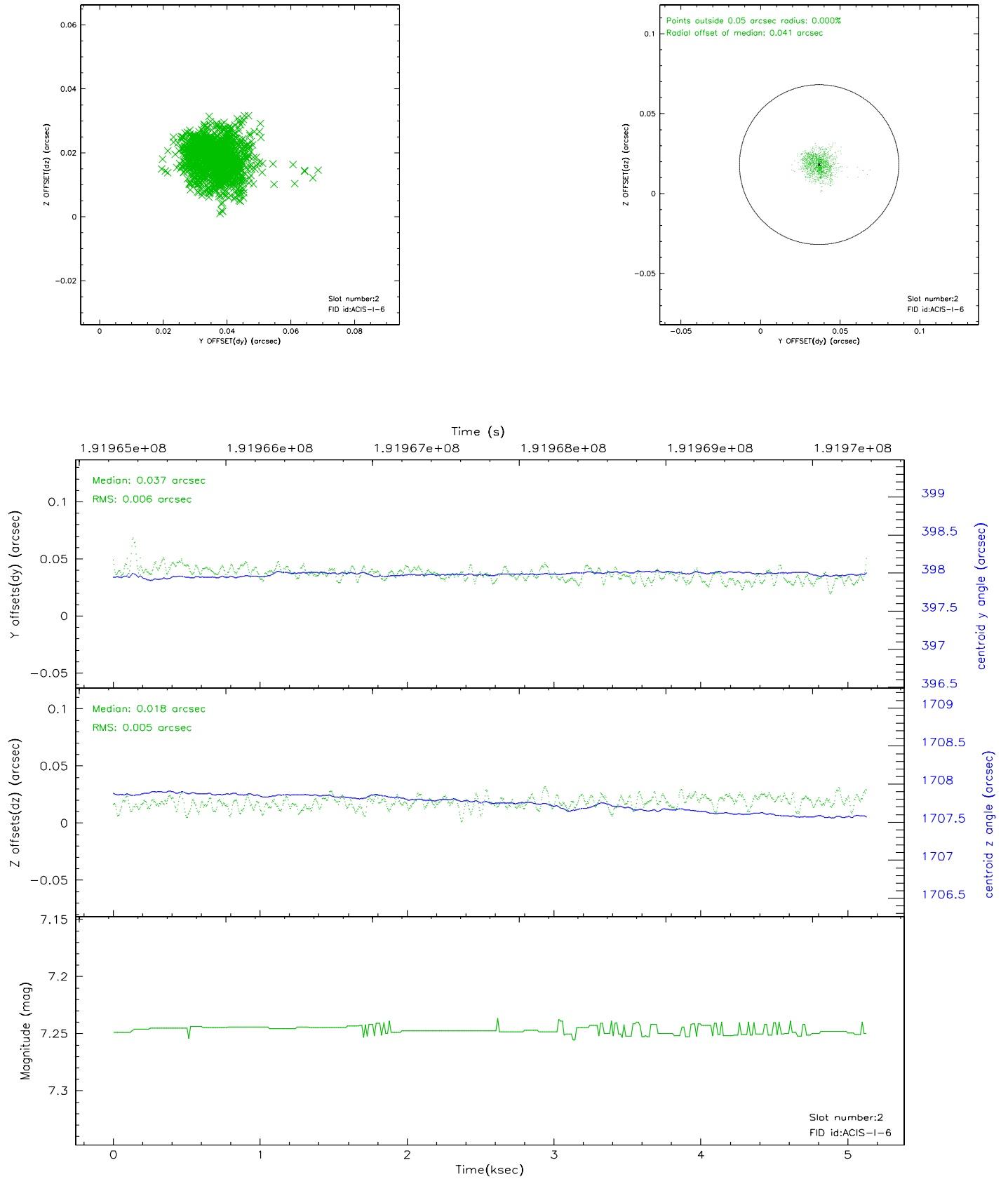
2.5.1 Slot 0



2.5.2 Slot 1



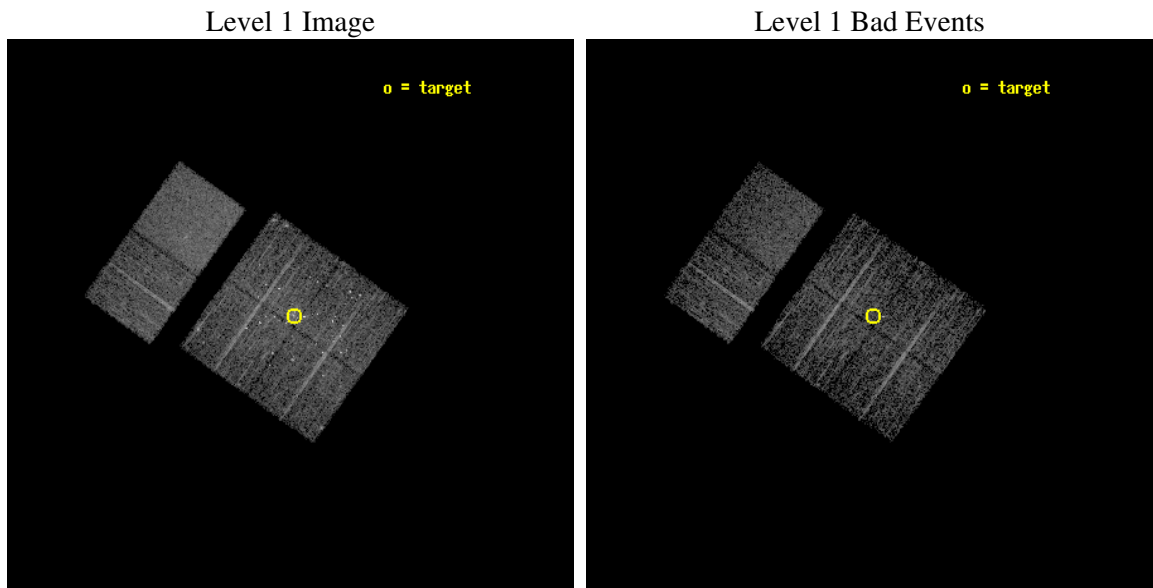
2.5.3 Slot 2



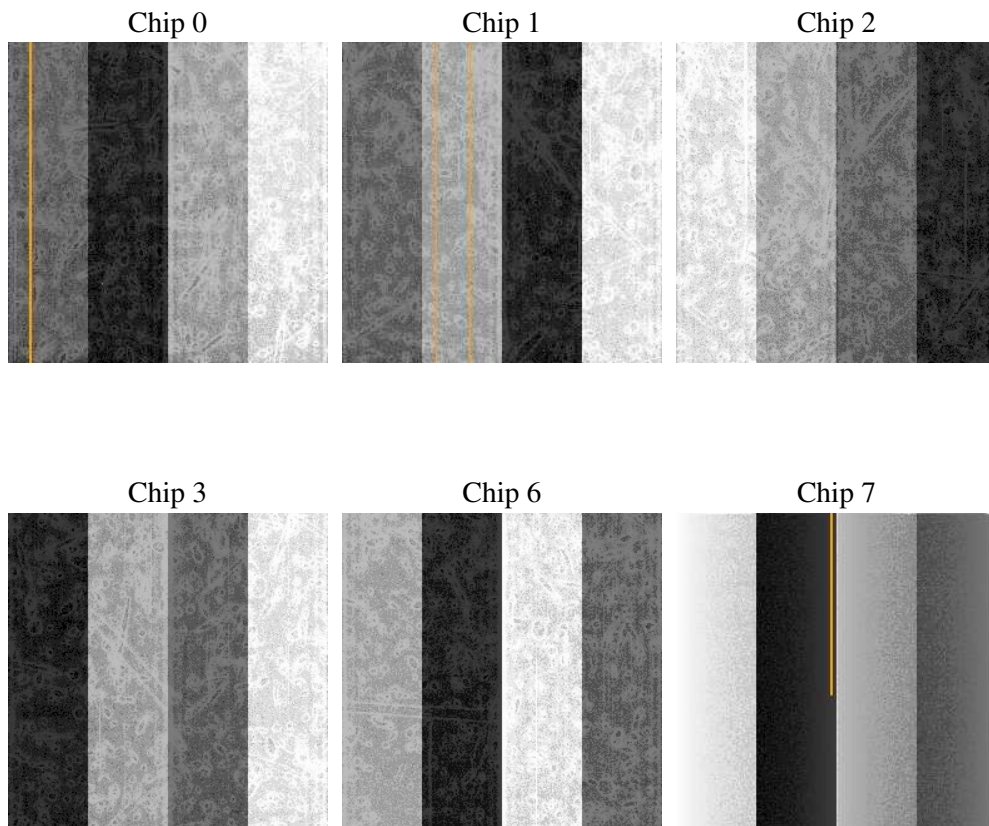
3 OBI Secondary

3.1 OBI

3.1.1 Images



3.1.2 Bias



3.1.3 Parameters

obi_num	0
ascdsver	7.6.7.2
caldbver	3.2.2
date	2006-06-04T04:45:24
revision	2

sched_exp_time	5000.000000
ontime	4647.6066405475
ontime0	4647.607098937
ontime1	4647.6069788635
ontime2	4644.3657897115
ontime3	4647.6066405475
ontime6	4647.6069690287
ontime7	4647.6068202257
l1events	208309

3.1.4 Events

	ccd 0	ccd 1	ccd 2	ccd 3	ccd 6	ccd 7
level 1 events	29797	34752	34112	34475	33107	42066
rejected events	25378	27108	28438	27226	29727	28596
rejected %	85%	78%	83%	78%	89%	67%

	ccd 0	ccd 1	ccd 2	ccd 3	ccd 6	ccd 7
grade 0 events	4696	7157	5780	7216	3321	1511
	15%	20%	16%	20%	10%	3%
grade 1 events	35	153	54	67	23	17
	0%	0%	0%	0%	0%	0%
grade 2 events	1560	1963	1524	1587	1279	4600
	5%	5%	4%	4%	3%	10%
grade 3 events	565	733	603	649	584	1031
	1%	2%	1%	1%	1%	2%
grade 4 events	626	734	624	629	563	975
	2%	2%	1%	1%	1%	2%
grade 5 events	1230	1262	1125	1338	1397	2590
	4%	3%	3%	3%	4%	6%
grade 6 events	1198	1431	1012	1141	1208	9869
	4%	4%	2%	3%	3%	23%
grade 7 events	19887	21319	23390	21848	24732	21473
	66%	61%	68%	63%	74%	51%

4 Point Sources

3.65 arcmin



A Summary

A.1 Status

V&V Scientist	Beth Sundheim
V&V Date (YYYY-MM-DD)	2006.06.05
V&V Edition	1
V&V Disposition and Status	OK
V&V Charge Time	5.129

A.2 Comments

Window constraint satisfied.