

# V&V Reference Report

## L2 ASCDS Version : 7.6.7.2

Observation 5298 - L2 Version 001  
Chandra X-Ray Center

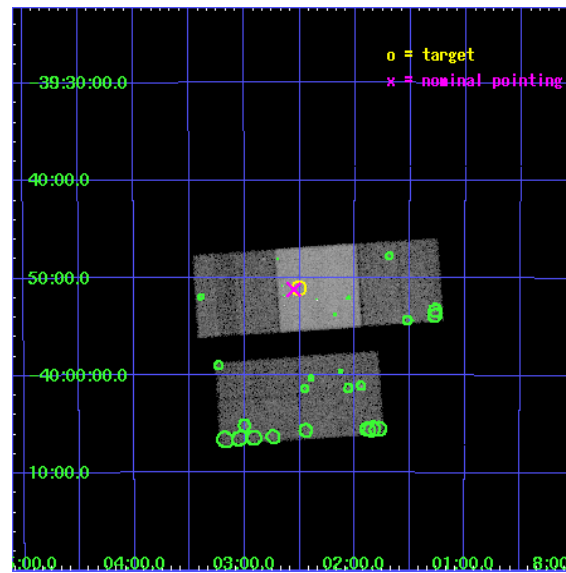
L2 Processing Date : Jun 6 2006

## Contents

<b>1</b>	<b>Front</b>	<b>2</b>
<b>2</b>	<b>OBI</b>	<b>3</b>
2.1	OBI . . . . .	3
2.1.1	Images . . . . .	3
2.1.2	Bias . . . . .	3
2.1.3	Parameters . . . . .	4
2.1.4	Events . . . . .	4
2.2	Compared Parameters . . . . .	5
2.3	Aspect . . . . .	6
2.4	Star Slots . . . . .	9
2.4.1	Slot 3 . . . . .	9
2.4.2	Slot 4 . . . . .	10
2.4.3	Slot 5 . . . . .	11
2.4.4	Slot 6 . . . . .	12
2.4.5	Slot 7 . . . . .	13
2.5	FID Slots . . . . .	14
2.5.1	Slot 0 . . . . .	14
2.5.2	Slot 1 . . . . .	15
2.5.3	Slot 2 . . . . .	16
<b>3</b>	<b>Point Sources</b>	<b>17</b>
<b>A</b>	<b>Summary</b>	<b>18</b>
A.1	Status . . . . .	18
A.2	Comments . . . . .	18

# 1 Front

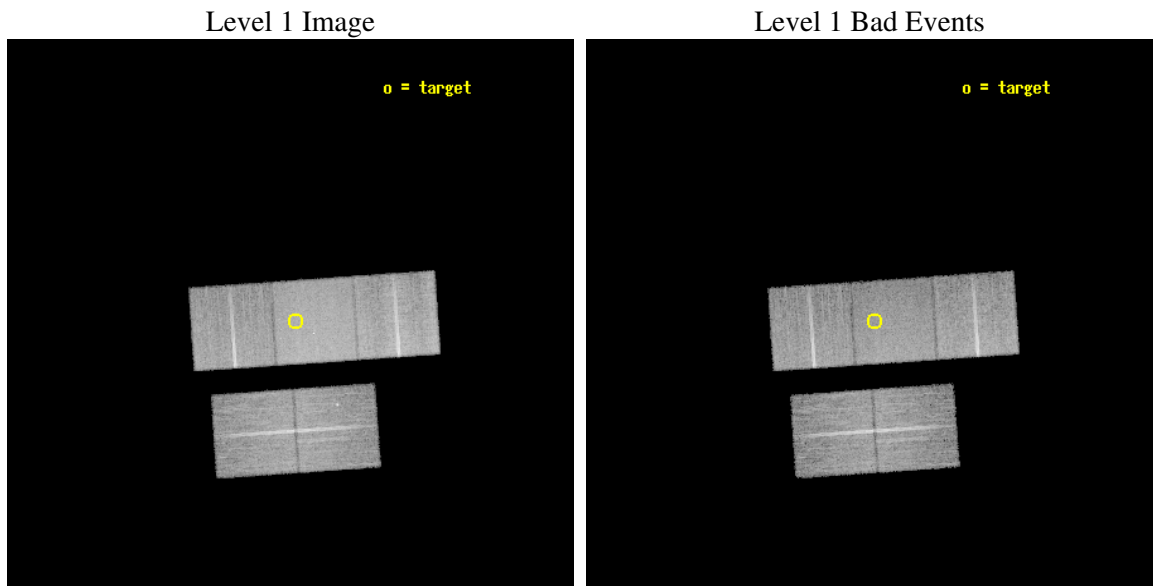
seq_num	500503
obs_id	5298
title	GRB 031203: A Possible Analogue to GRB980425/SN1998bw
observer	Prof. Shrinivas Kulkarni
object	GRB031203
dtcycle	0
cycle	P
ra_targ	120.625833
dec_targ	-39.851083
ra_nom	120.63801199322
dec_nom	-39.853425567849
roll_nom	356.03321686129
revision	2
ontime	21848.799957991
livetime	21563.329301687
ontime2	21848.799957991
ontime3	21848.799957991
ontime6	21848.799957991
ontime7	21848.799957991
ontime8	21848.799957991
l2events	128310



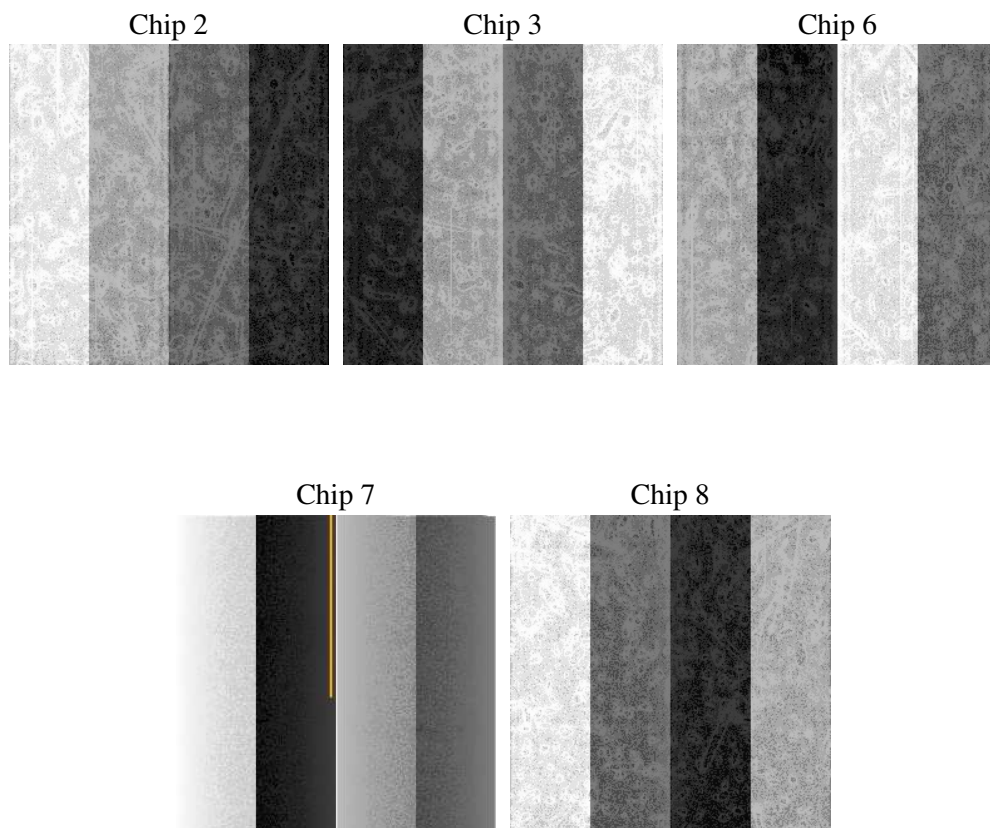
## 2 OBI

### 2.1 OBI

#### 2.1.1 Images



#### 2.1.2 Bias



### 2.1.3 Parameters

obi_num	1
ascdsver	7.6.7.2
caldbver	3.2.2
date	2006-06-07T01:47:43
revision	2

sched_exp_time	21799.774000
ontime	22313.702143878
ontime2	22310.561193645
ontime3	22313.702143878
ontime6	22313.702143878
ontime7	22313.702143878
ontime8	22313.702143878
l1events	741820

### 2.1.4 Events

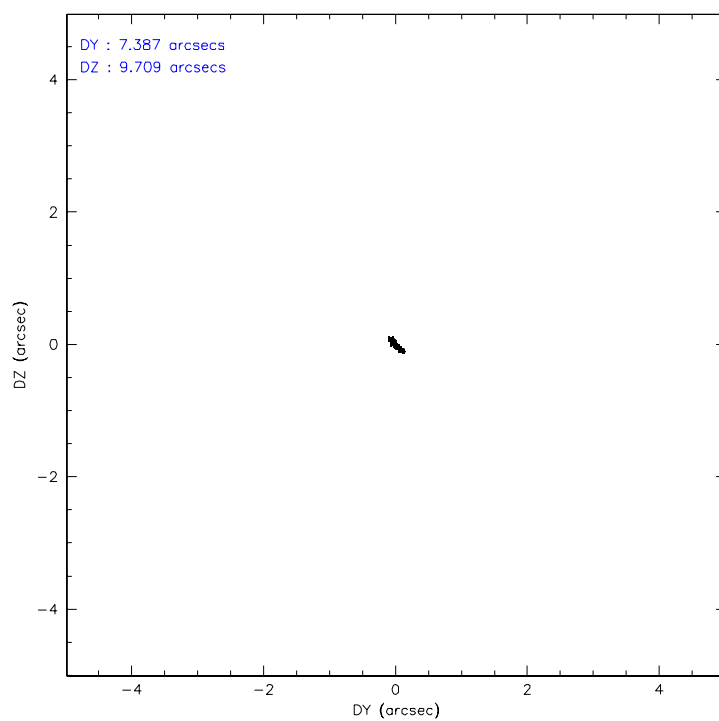
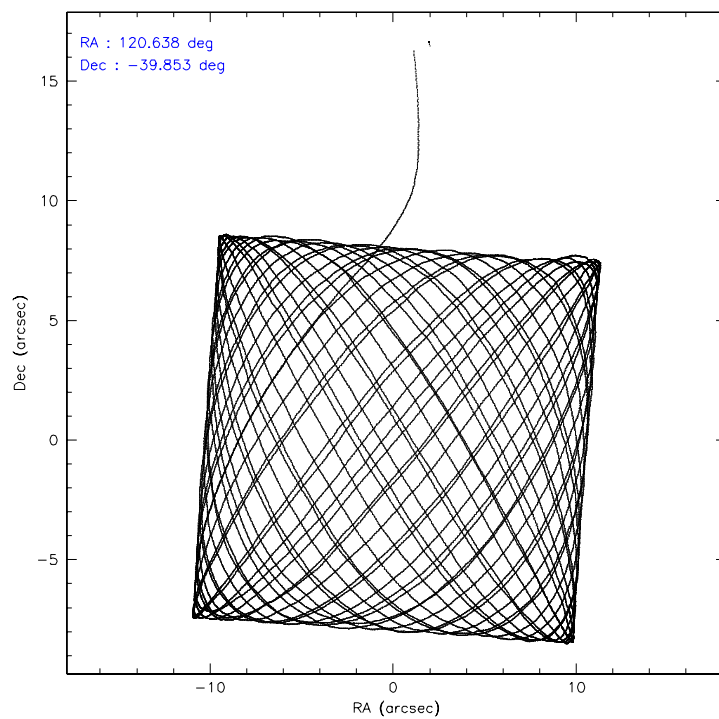
	ccd 2	ccd 3	ccd 6	ccd 7	ccd 8
level 1 events	128252	128957	134014	177944	172653
rejected events	111220	111180	116380	111938	130439
rejected %	86%	86%	86%	62%	75%

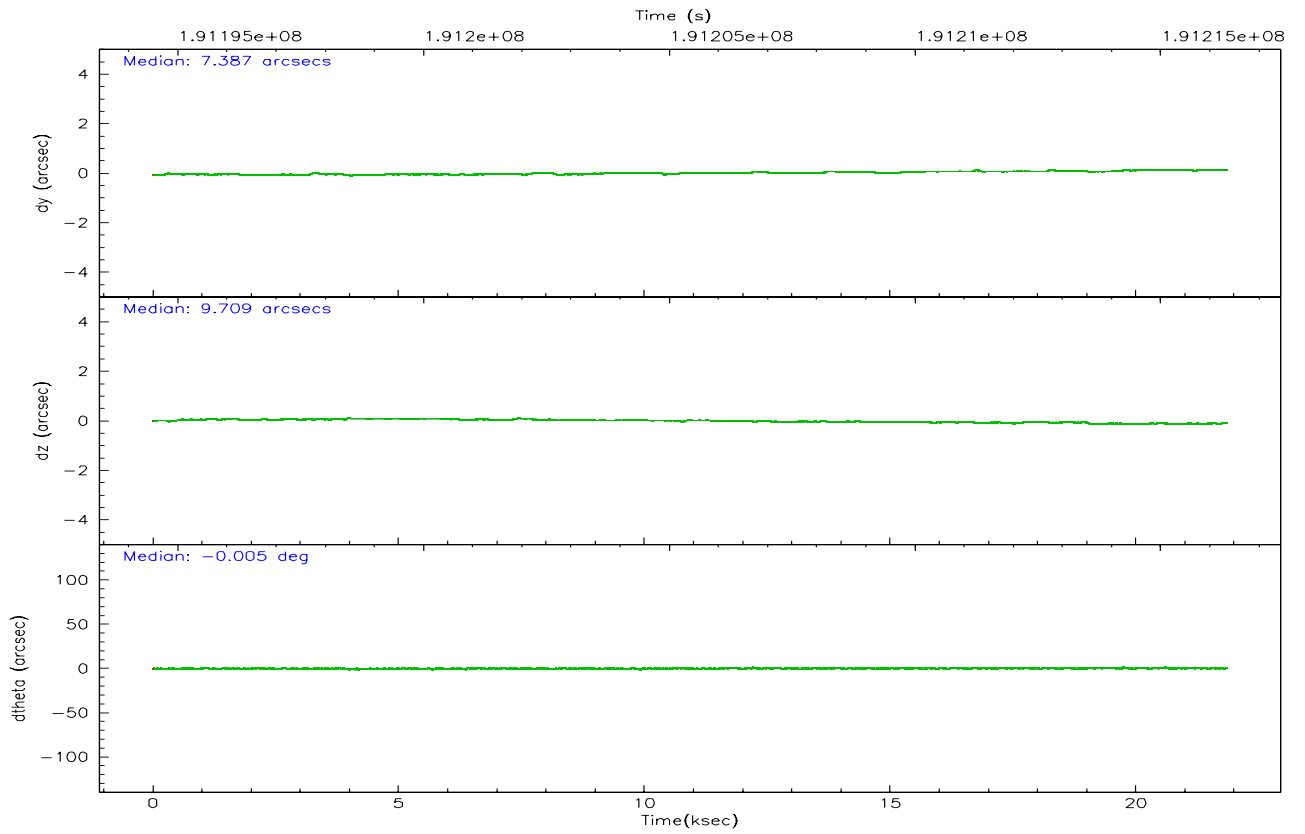
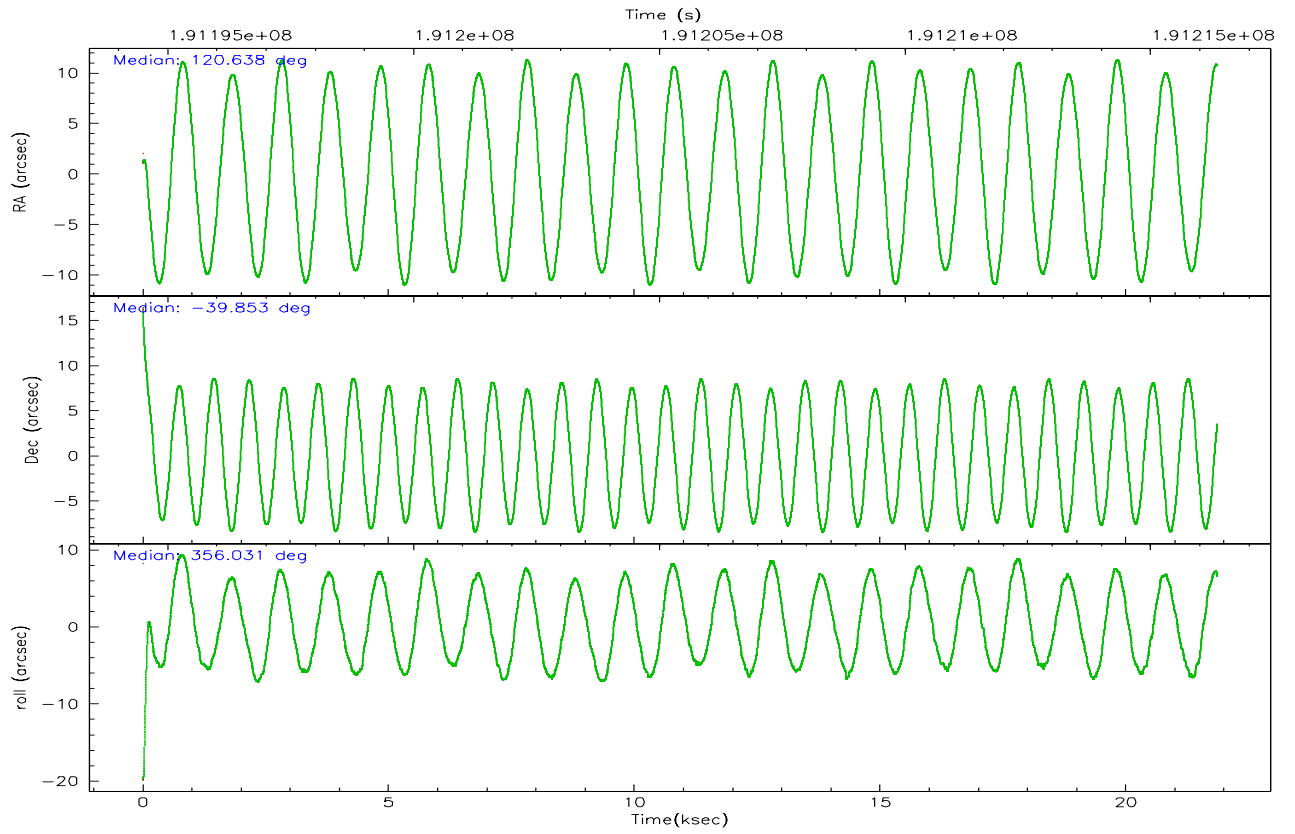
	ccd 2	ccd 3	ccd 6	ccd 7	ccd 8
grade 0 events	8638	8910	7836	4495	15464
	6%	6%	5%	2%	8%
grade 1 events	77	76	75	84	125
	0%	0%	0%	0%	0%
grade 2 events	3767	4020	4272	16754	8637
	2%	3%	3%	9%	5%
grade 3 events	1522	1650	1522	3476	5205
	1%	1%	1%	1%	3%
grade 4 events	1591	1613	1491	3351	4859
	1%	1%	1%	1%	2%
grade 5 events	4865	5771	5849	11337	7865
	3%	4%	4%	6%	4%
grade 6 events	3052	3141	3550	40066	9481
	2%	2%	2%	22%	5%
grade 7 events	104740	103776	109419	98381	121017
	81%	80%	81%	55%	70%

## 2.2 Compared Parameters

Parameter	Planned	Actual	Parameter	Planned	Actual
Instrument	ACIS	ACIS	Obspar format version number	6	6
Detector	ACIS-23678	ACIS-23678	Obspar file type	PREDICTED	ACTUAL
Grating	NONE	NONE	Obspar update status	NONE	UPDATED
Data mode	VFAINT	VFAINT	On-chip summing requested	N	N
Observation mode	POINTING	POINTING	Subarray requested	NONE	NONE
Pointing RA	120.606385	120.6380119932239	Alternating exposures requested	N	N
Pointing Dec	-39.865715	-39.853425567849	Primary exposure time	0.000000	3.1
Pointing Roll	355.856331	356.0332168612875			
SIM focus pos (mm)	-0.684267	-0.6828225247311905			
SIM defocus (mm)	0	0.001444936568705701			
SIM translation stage pos (mm)	-190.132523	-190.1400660498719			
SIM translation stage offset (mm)	0	0.00754346686406393			
Observation start time	191194556.184000	191193456.08033			
Observation start date	2004-01-22T21:34:52	2004-01-22T21:17:36			
Observation end time	191216356.184000	191216670.28134			
Observation end date	2004-01-23T03:38:12	2004-01-23T03:44:30			
Read mode	TIMED	TIMED			

## 2.3 Aspect





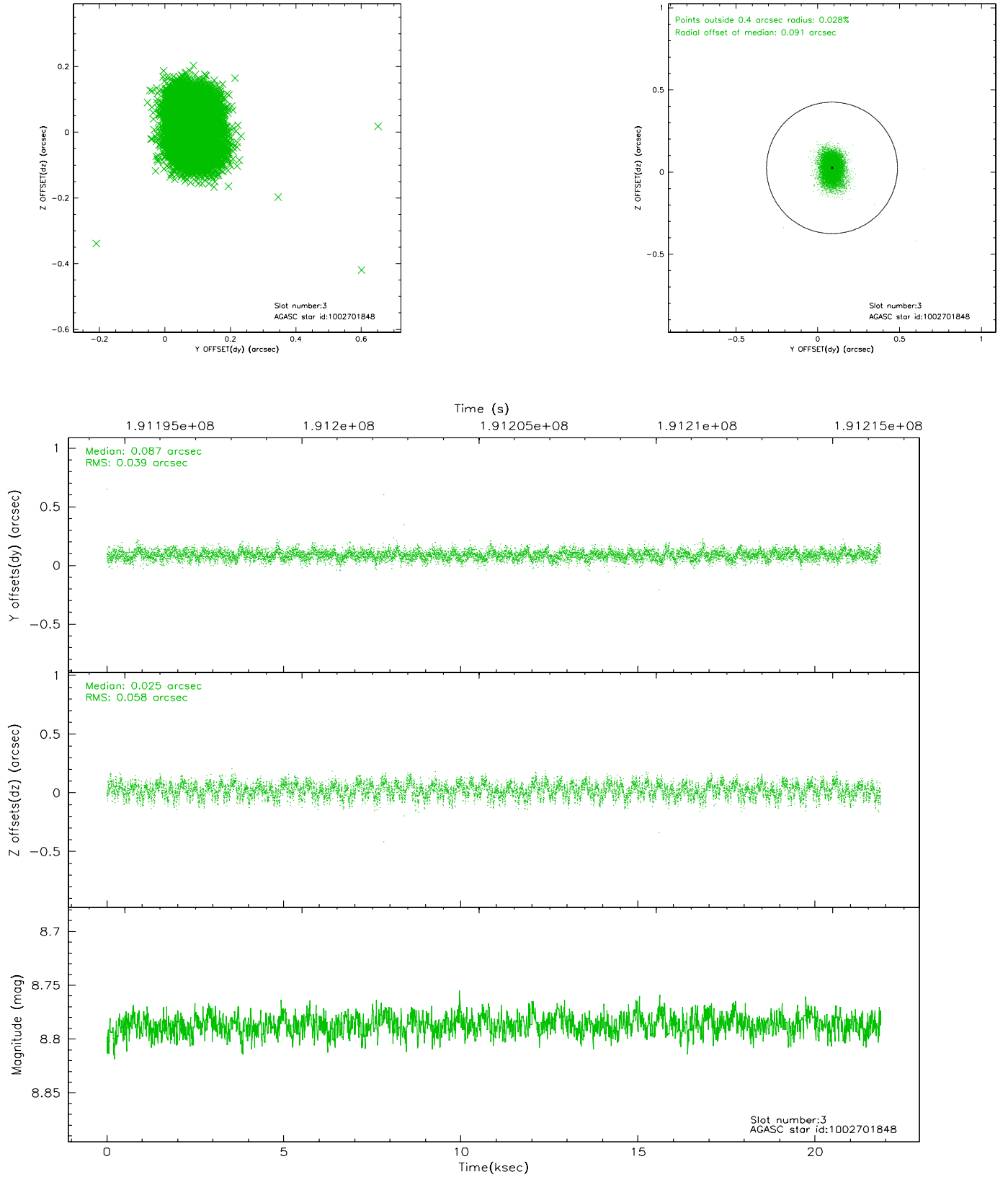
### Slot Statistics

slot	status	id	mag	n_pts	med_dy	med_dz	dr1	dr2	ra	dec	mean_y	mean_z
0	FID	ACIS-S-4	7.20	5331	0.037	0.006	0.006	0.011	0.000000	0.000000	2153.22	177.76
1	FID	ACIS-S-5	7.24	5331	-0.042	0.011	0.005	0.009	0.000000	0.000000	-1812.84	171.20
2	FID	ACIS-S-6	7.35	5330	-0.023	-0.004	0.007	0.012	0.000000	0.000000	401.24	814.96
3	GUIDE	1002701848	8.79	10661	0.087	0.025	0.073	0.121	119.933509	-39.984018	-1819.46	-565.86
4	GUIDE	1004434824	9.46	10653	0.003	-0.027	0.094	0.155	120.851618	-39.532377	592.68	1245.22
5	GUIDE	1002701128	8.55	10656	0.007	-0.015	0.073	0.118	119.920741	-40.492086	-1708.34	-2391.82
6	GUIDE	1004413080	8.83	10657	0.008	0.077	0.081	0.127	120.242432	-40.499402	-828.44	-2349.39
7	GUIDE	1004435080	9.00	10655	-0.105	-0.063	0.069	0.113	121.357562	-39.510372	1989.28	1417.89

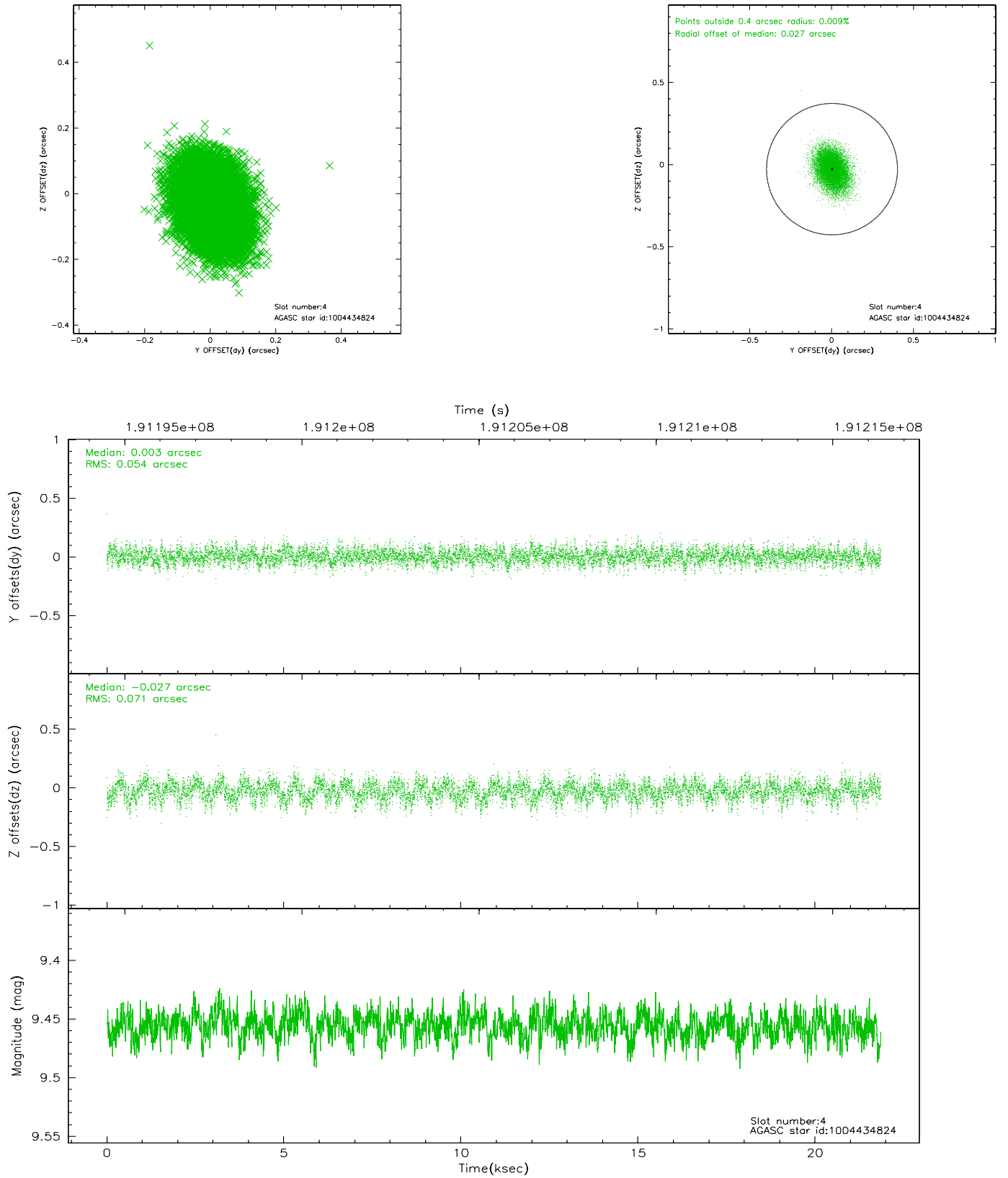


## 2.4 Star Slots

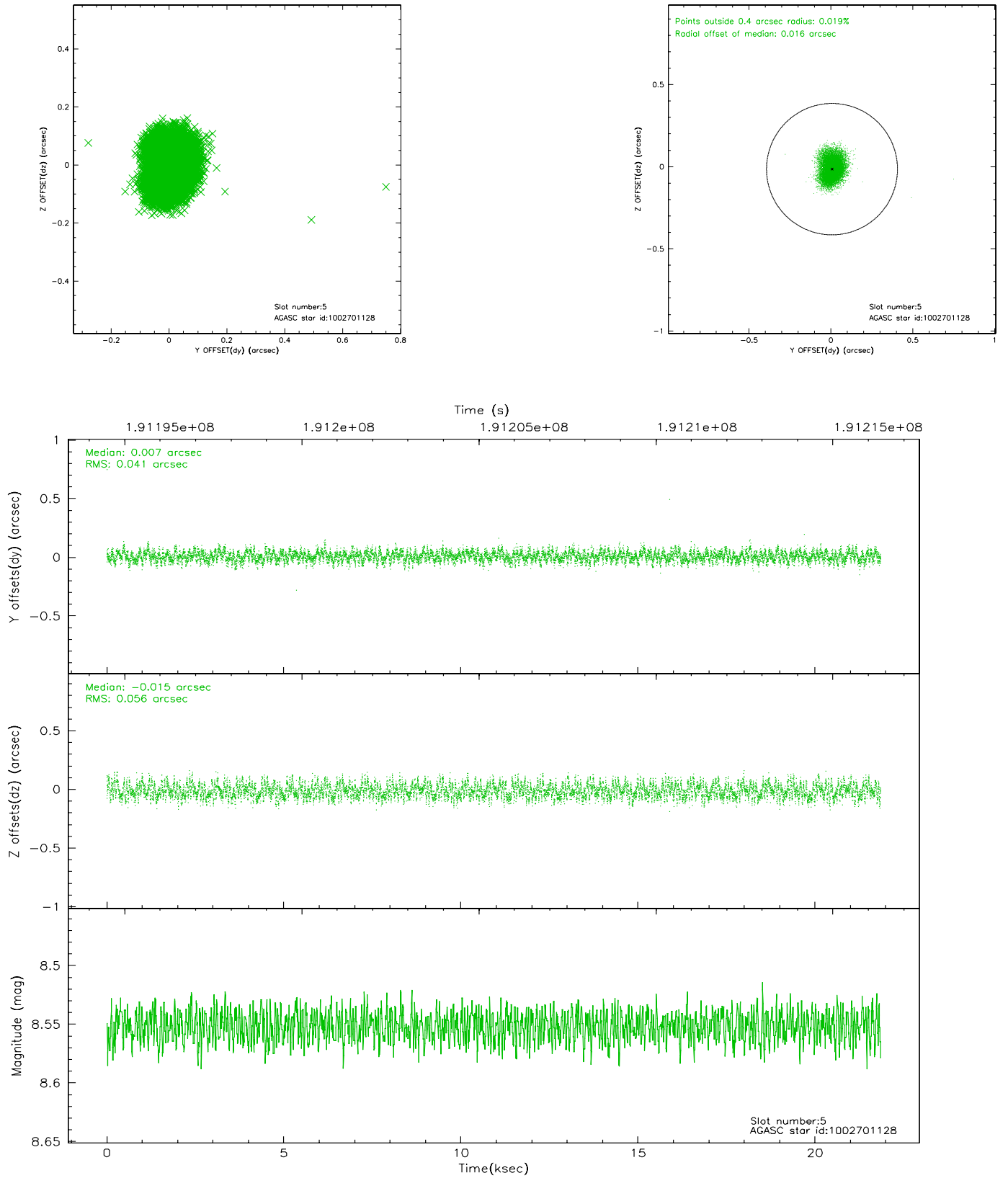
### 2.4.1 Slot 3



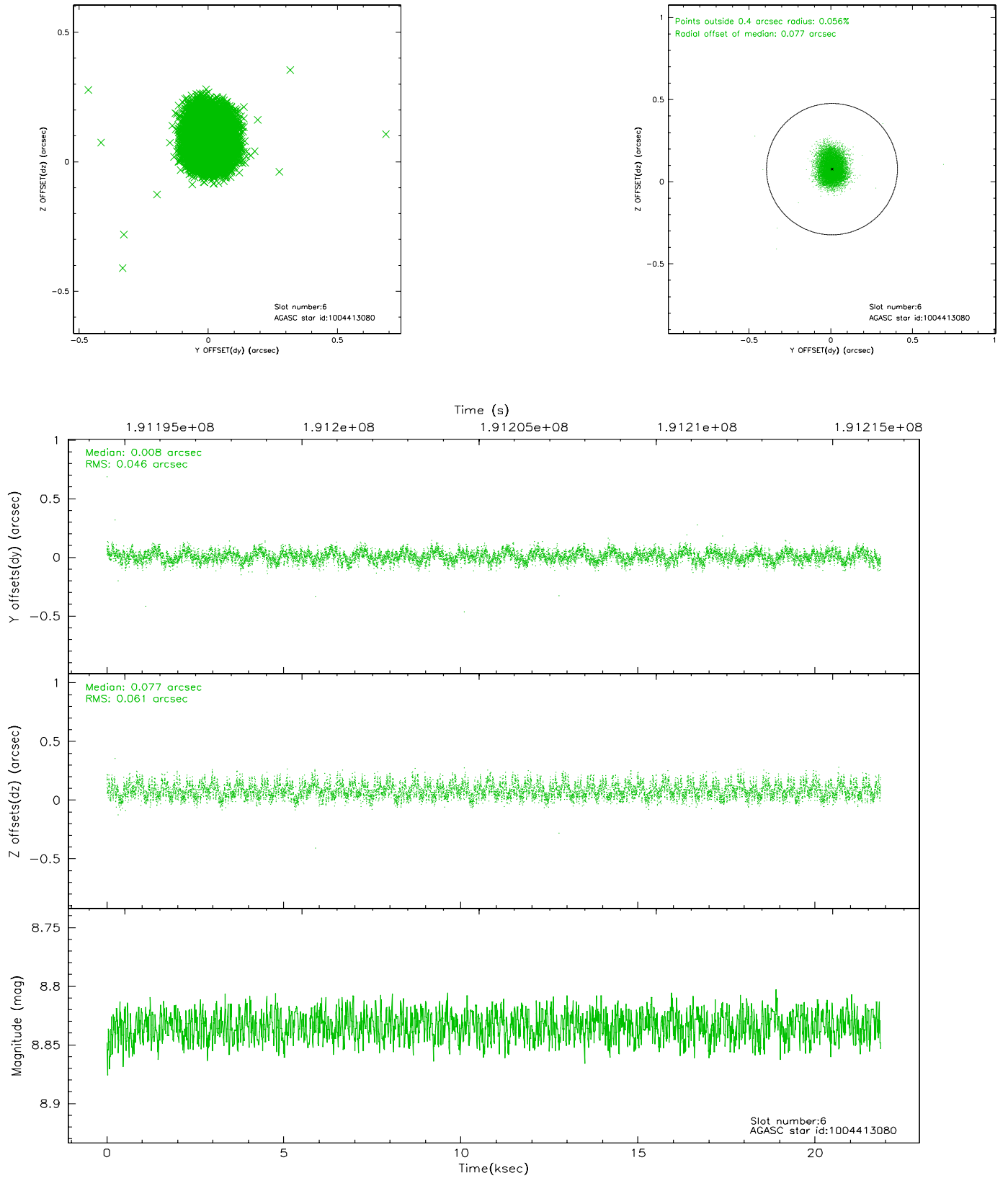
## 2.4.2 Slot 4



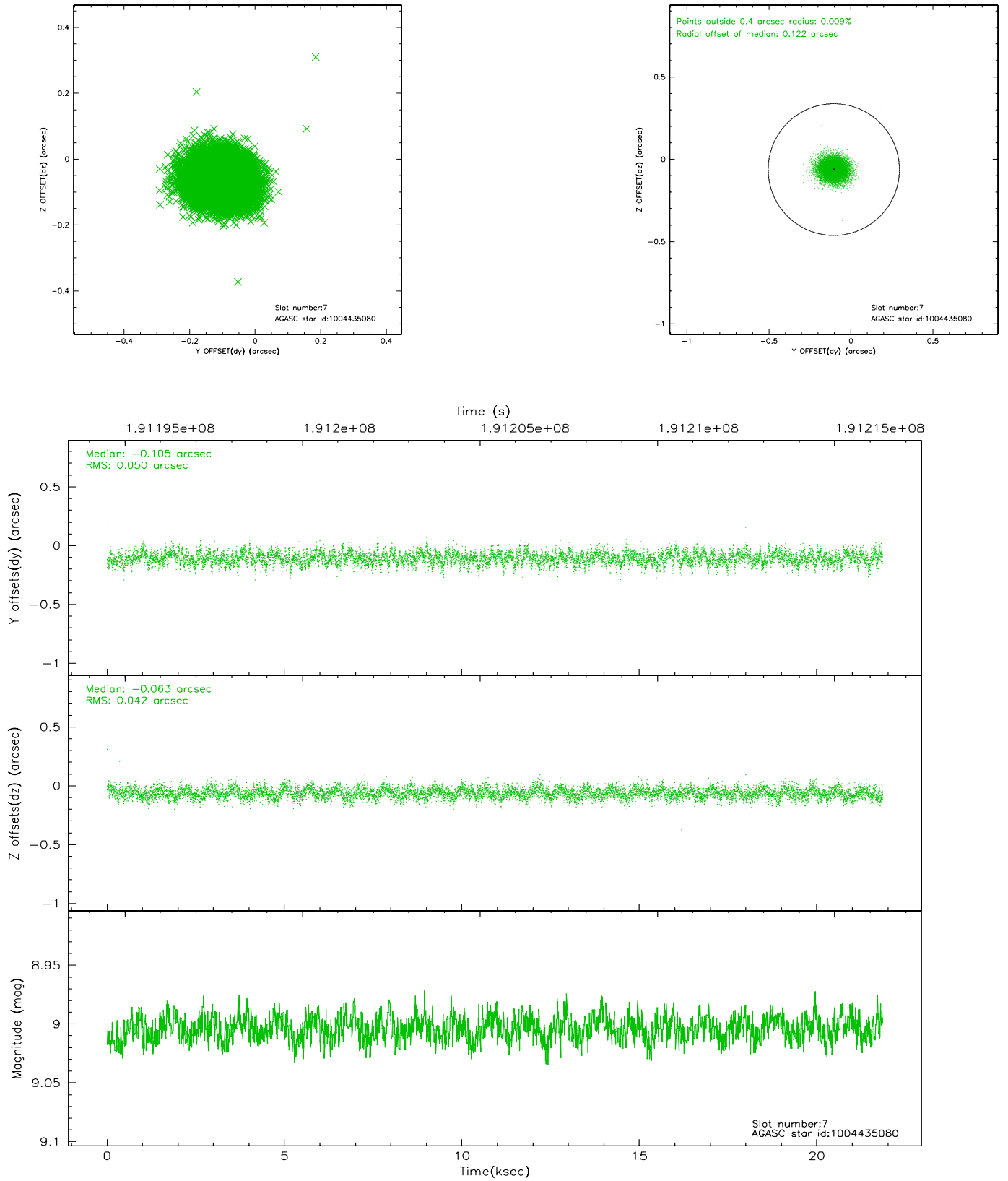
### 2.4.3 Slot 5



## 2.4.4 Slot 6

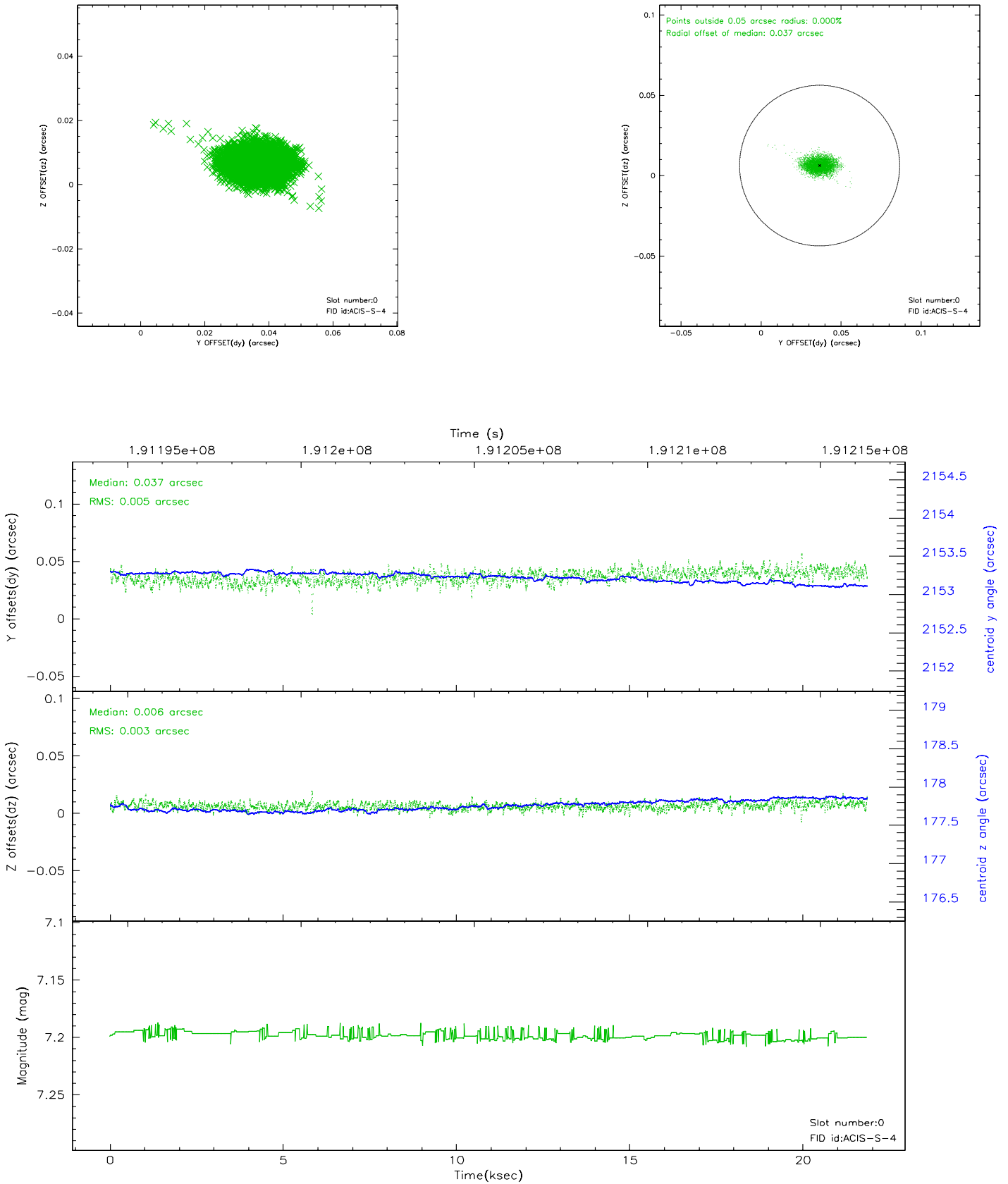


## 2.4.5 Slot 7

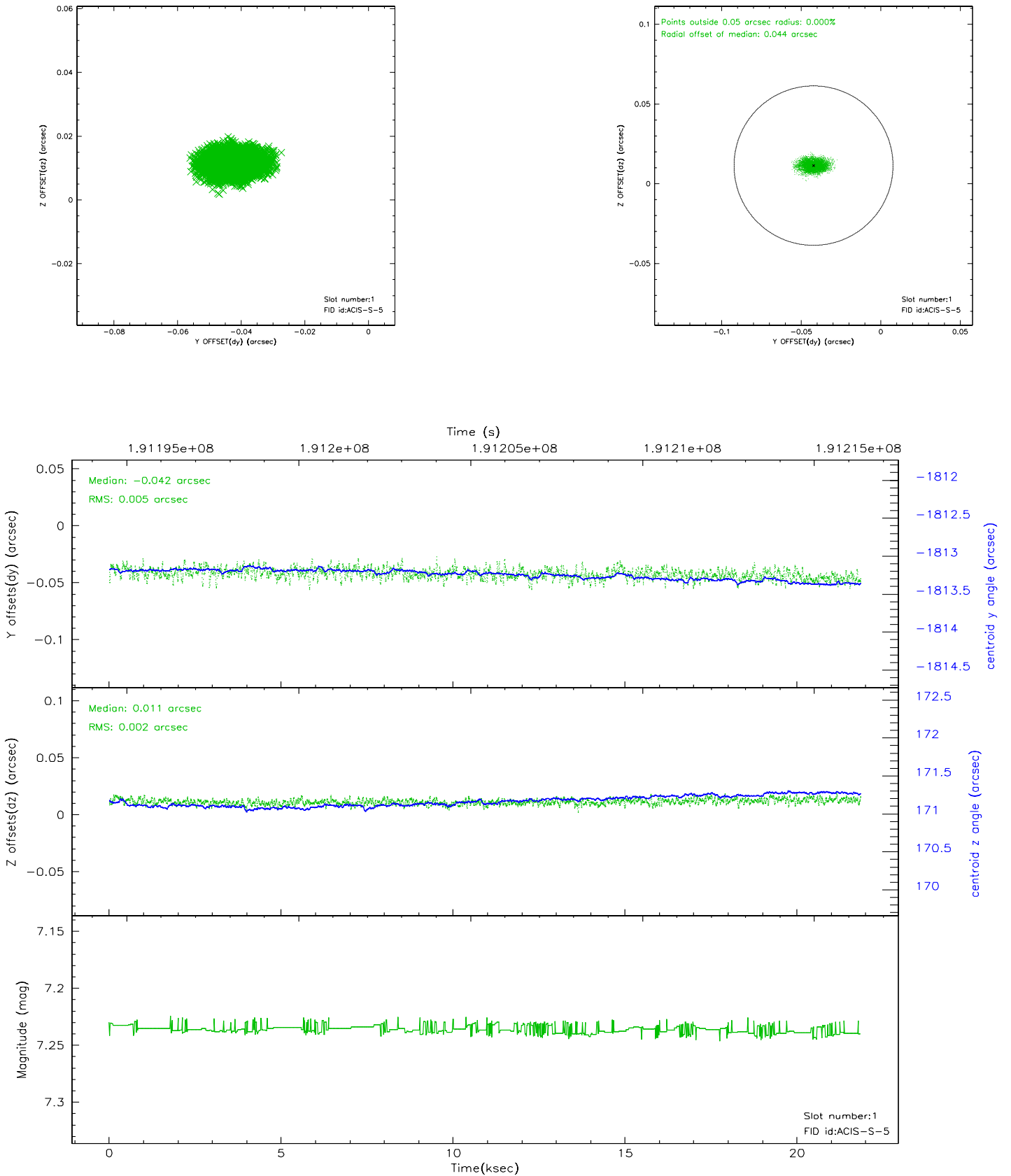


## 2.5 FID Slots

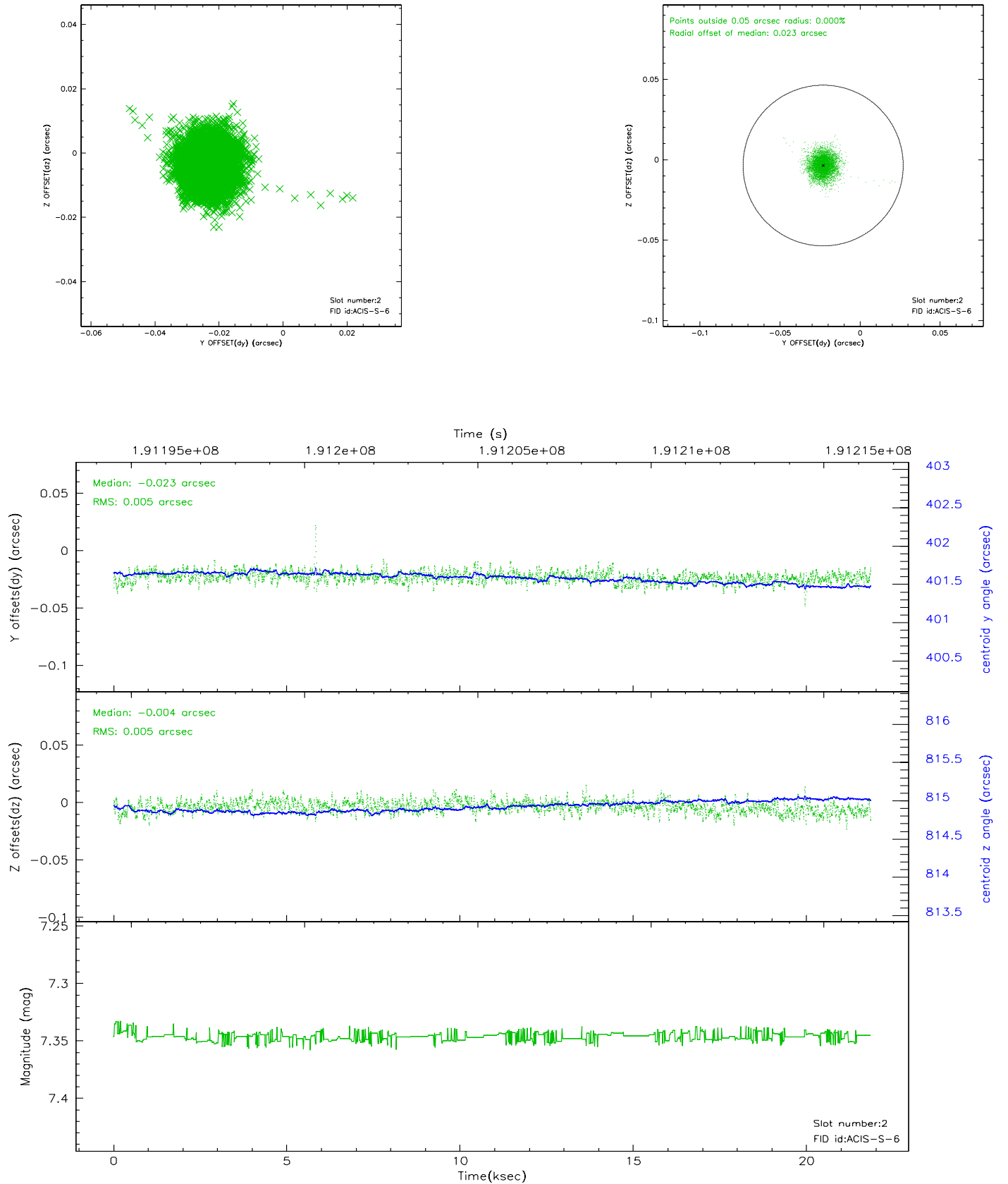
### 2.5.1 Slot 0



## 2.5.2 Slot 1

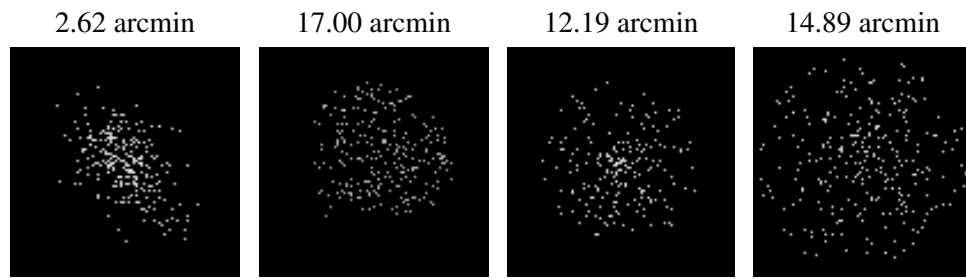


### 2.5.3 Slot 2





### 3 Point Sources



## A Summary

### A.1 Status

V&V Scientist	Beth Sundheim
V&V Date (YYYY-MM-DD)	2006.06.07
V&V Edition	1
V&V Disposition and Status	OK
V&V Charge Time	21.848

### A.2 Comments