

V&V Reference Report

L2 ASCDS Version : 7.6.7.2

Observation 4672 - L2 Version 3
Chandra X-Ray Center

L2 Processing Date : Apr 11 2008

Contents

1	Front	2
2	OBI	3
2.1	OBI	3
2.1.1	Images	3
2.1.2	Bias	3
2.1.3	Parameters	4
2.1.4	Events	4
2.2	Compared Parameters	5
2.3	Aspect	6
2.4	Star Slots	9
2.4.1	Slot 3	9
2.4.2	Slot 4	10
2.4.3	Slot 5	11
2.4.4	Slot 6	12
2.4.5	Slot 7	13
2.5	FID Slots	14
2.5.1	Slot 0	14
2.5.2	Slot 1	15
2.5.3	Slot 2	16
A	Summary	17
A.1	Status	17
A.2	Comments	17

1 Front

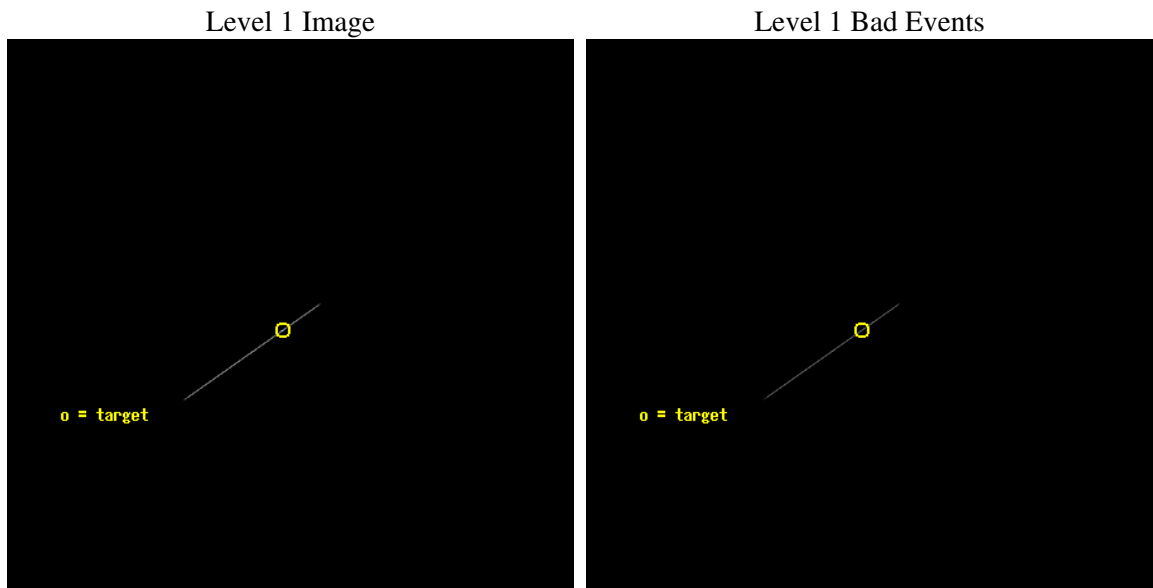
seq_num	500491
obs_id	4672
title	Timing the Enigmatic Nearby Neutron Star RX J0720.4-3125
observer	Dr David Kaplan
object	RX J0720.4-3125
ra_targ	110.104167
dec_targ	-31.430444
ra_nom	110.0961772706
dec_nom	-31.423634226602
roll_nom	145.13780050286
revision	3
ontime	5118.5
livetime	5098.505859375
ontime7	5118.5
l2events	28409



2 OBI

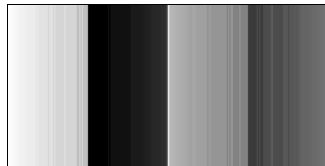
2.1 OBI

2.1.1 Images



2.1.2 Bias

Chip 7



2.1.3 Parameters

obi_num	2
ascdsver	7.6.11.6
caldbver	3.4.4
date	2008-04-11T21:52:33
revision	3

sched_exp_time	5000.000000
ontime	5118.5
ontime7	5118.5
l1events	41824

2.1.4 Events

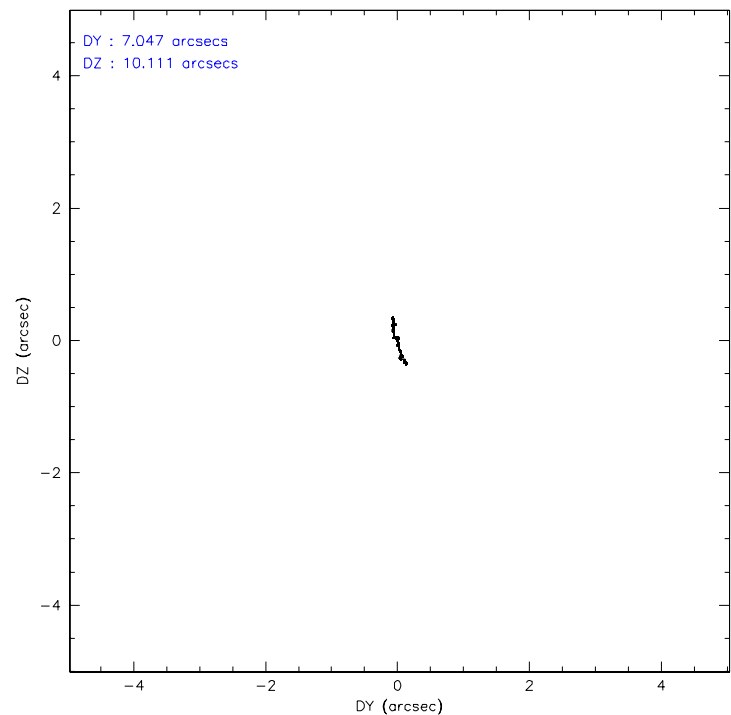
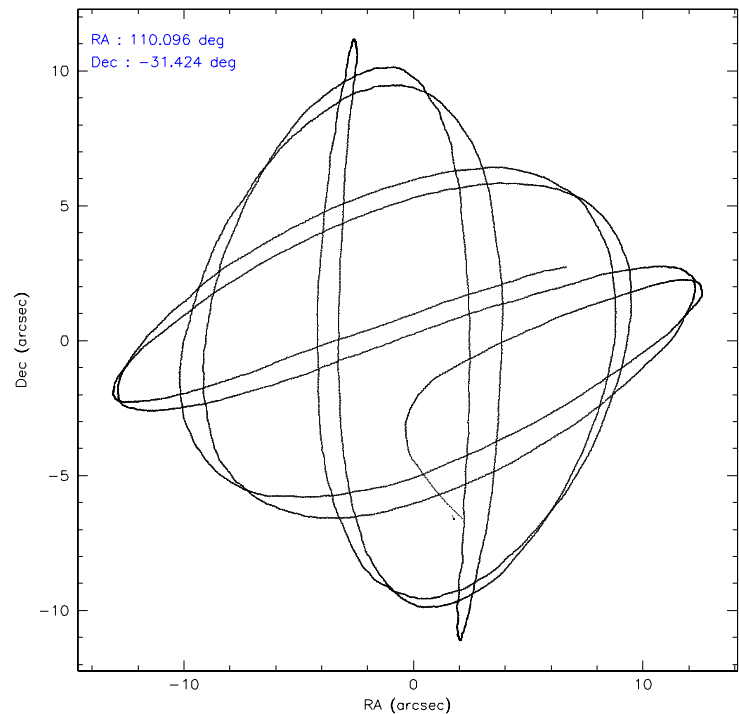
	ccd 7
level 1 events	41824
rejected events	12512
rejected %	29%

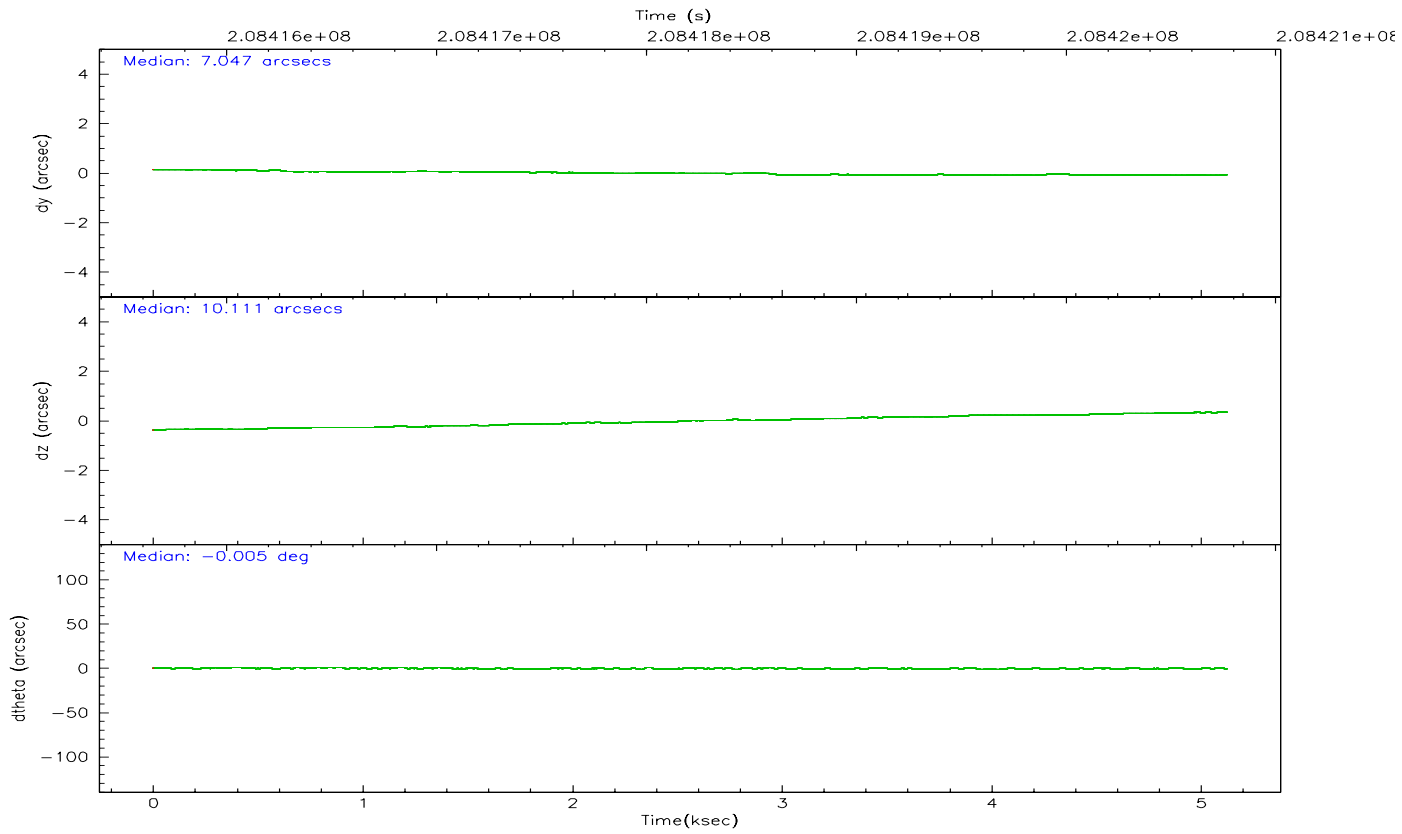
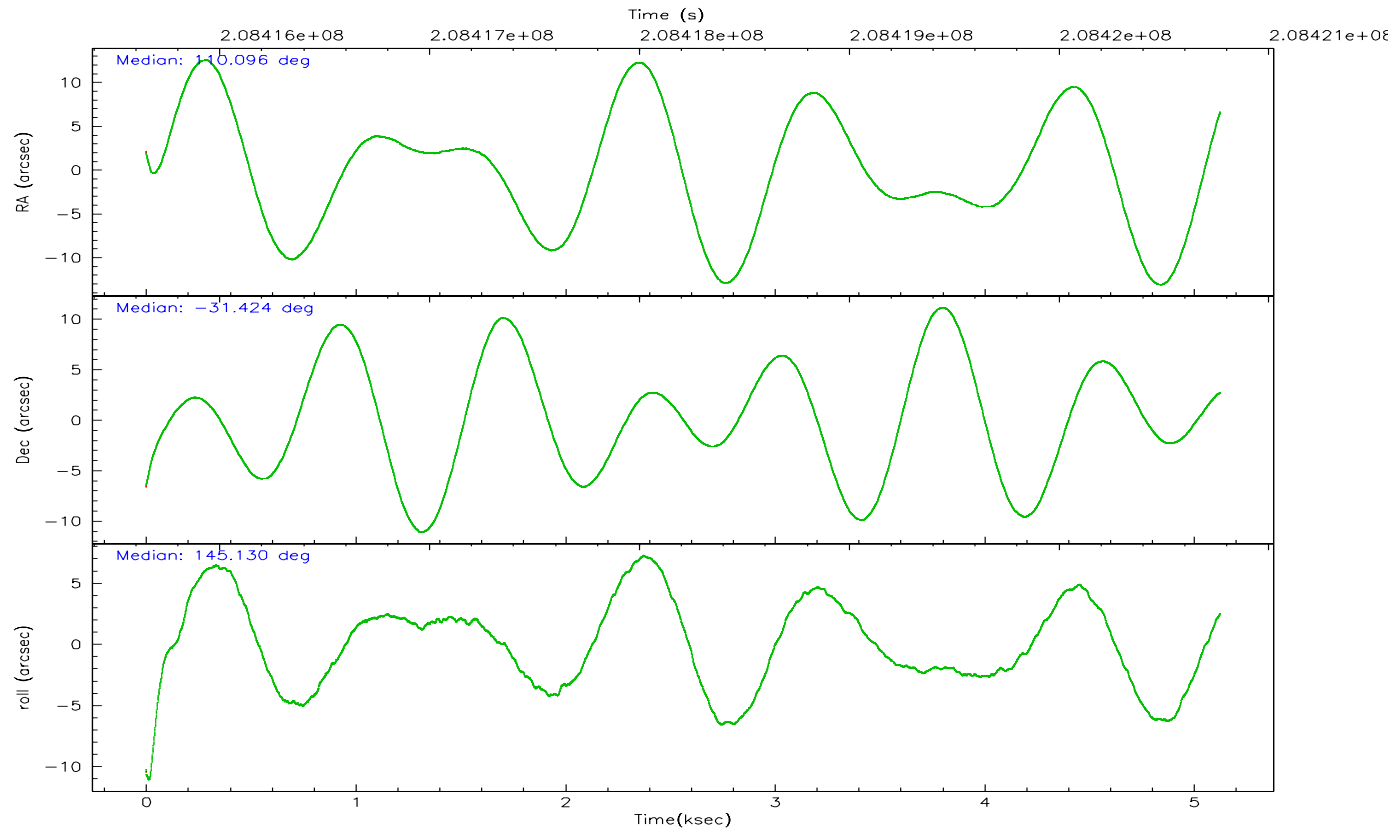
	ccd 7
grade 0 events	7973
	19%
grade 1 events	105
	0%
grade 2 events	8425
	20%
grade 3 events	2806
	6%
grade 4 events	2687
	6%
grade 5 events	5428
	12%
grade 6 events	14400
	34%
grade 7 events	0
	0%

2.2 Compared Parameters

Parameter	Planned	Actual	Parameter	Planned	Actual
Instrument	ACIS	ACIS	Obspar format version number	6	6
Detector	ACIS-7	ACIS-7	Obspar file type	PREDICTED	ACTUAL
Grating	NONE	NONE	Obspar update status	NONE	UPDATED
Data mode	CC33_FAINT	CC33_FAINT	On-chip summing requested	N	N
Observation mode	POINTING	POINTING	Subarray requested	NONE	NONE
Pointing RA	110.127978	110.0961772705977	Alternating exposures requested	N	N
Pointing Dec	-31.425548	-31.42363422660237	Primary exposure time	0.000000	0
Pointing Roll	144.997790	145.1378005028585			
SIM focus pos (mm)	-0.684267	-0.6828225247311905			
SIM defocus (mm)	0	0.001444936568705701			
SIM translation stage pos (mm)	-190.132523	-190.1400660498719			
SIM translation stage offset (mm)	0	0.00754346686406393			
Observation start time	208415770.184000	208413915.52686			
Observation start date	2004-08-09T05:15:06	2004-08-09T04:45:15			
Observation end time	208420770.184000	208422025.32722			
Observation end date	2004-08-09T06:38:26	2004-08-09T07:00:25			
Read mode	CONTINUOUS	CONTINUOUS			

2.3 Aspect



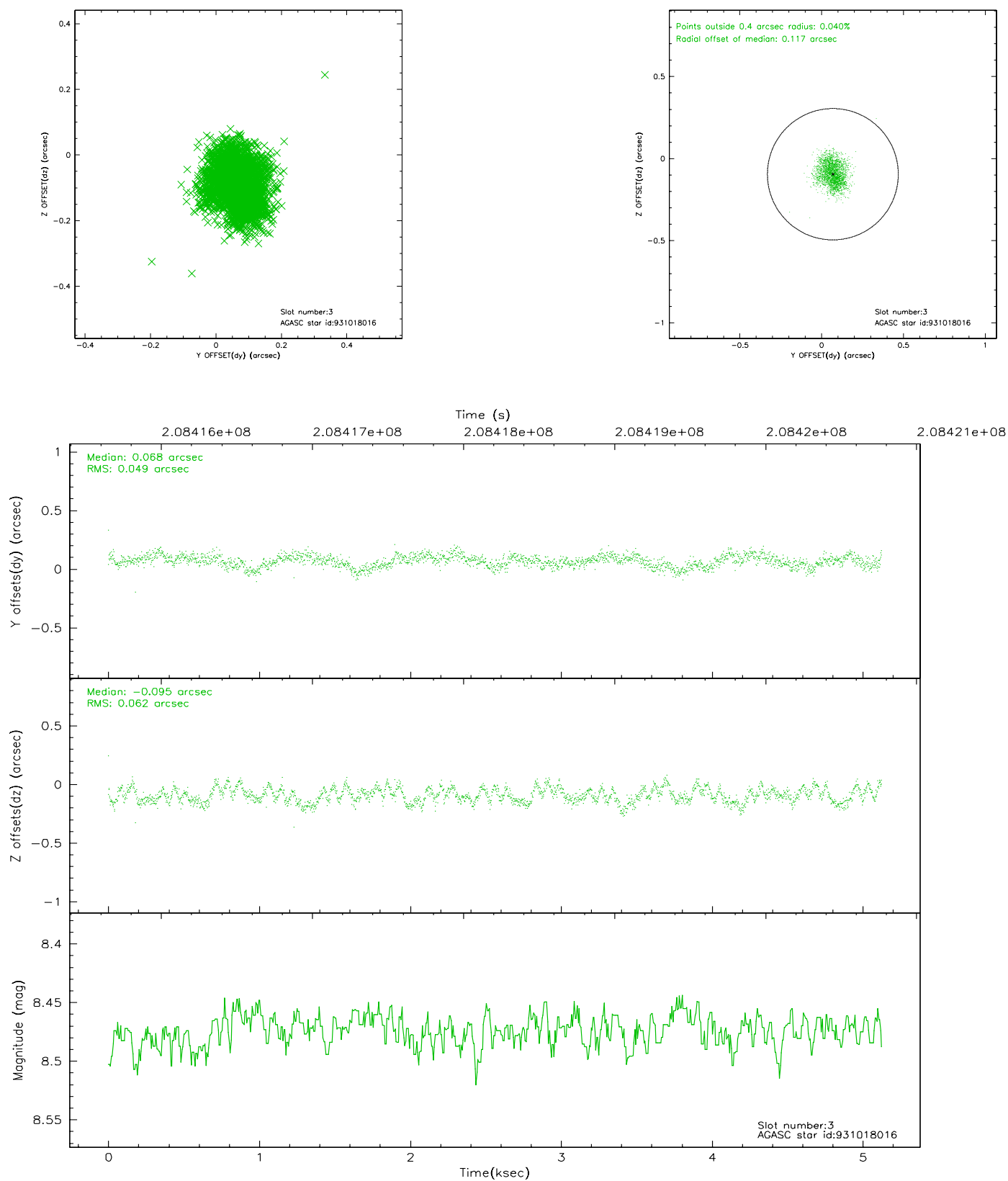


Slot Statistics

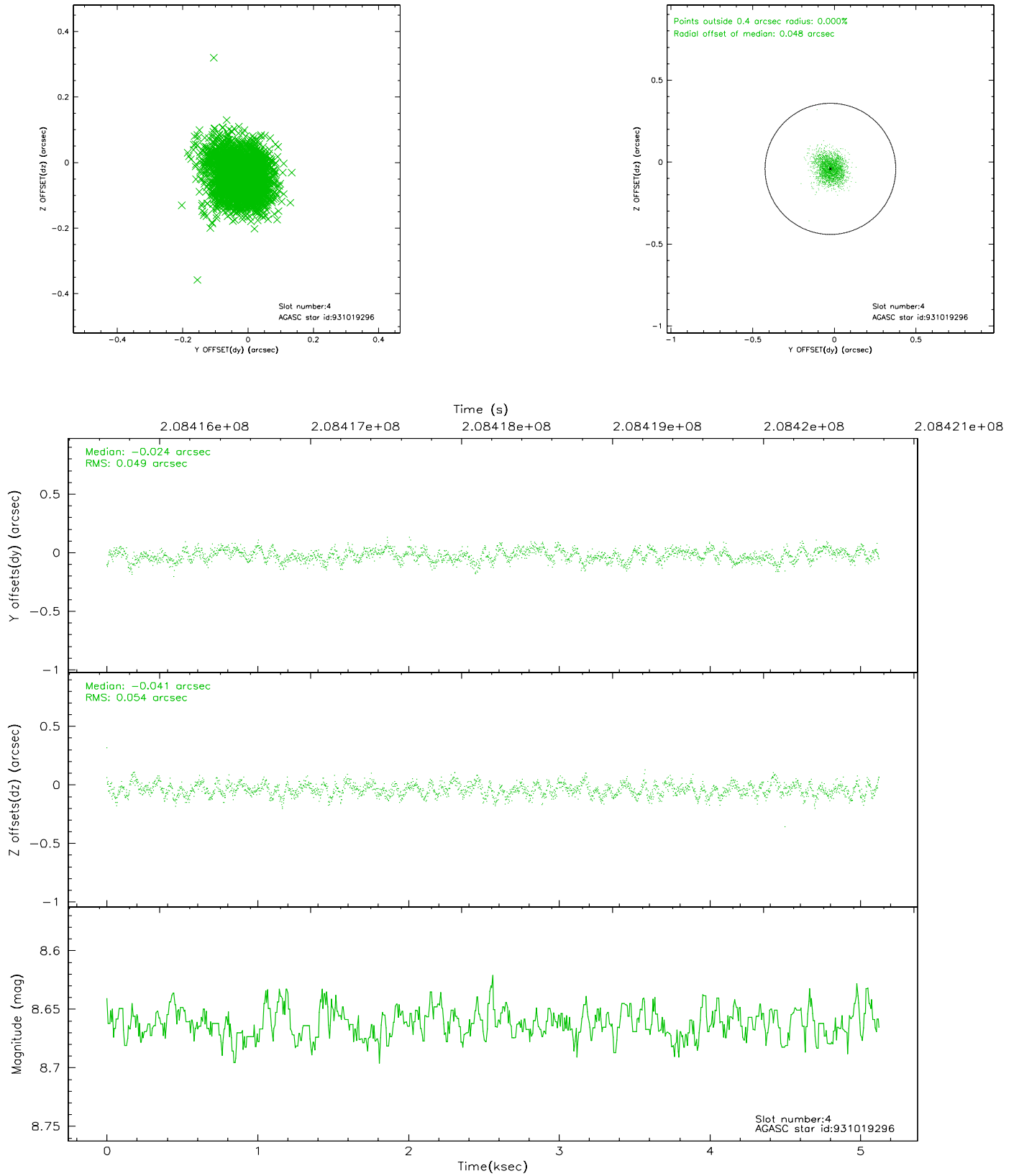
slot	status	id	mag	n_pts	med_dy	med_dz	dr1	dr2	ra	dec	mean_y	mean_z
0	FID	ACIS-S-2	7.10	1251	-0.044	0.003	0.008	0.012	0.000000	0.000000	-759.81	-1731.36
1	FID	ACIS-S-4	7.20	1251	0.044	0.021	0.006	0.010	0.000000	0.000000	2152.98	175.98
2	FID	ACIS-S-5	7.23	1250	-0.031	-0.015	0.008	0.014	0.000000	0.000000	-1811.15	170.88
3	GUIDE	931018016	8.47	2501	0.068	-0.095	0.085	0.130	109.684535	-31.226562	1527.78	198.77
4	GUIDE	931019296	8.66	2501	-0.024	-0.041	0.078	0.123	109.471771	-31.694370	1088.42	1951.22
5	GUIDE	931160352	8.62	2501	0.012	0.147	0.073	0.120	110.268138	-30.864891	803.88	-1900.45
6	GUIDE	931163512	8.45	2501	0.011	0.085	0.069	0.111	110.894384	-31.299941	-1675.67	-1716.82
7	GUIDE	931022960	8.95	2497	-0.071	-0.088	0.080	0.128	109.733092	-31.864448	80.61	1987.91

2.4 Star Slots

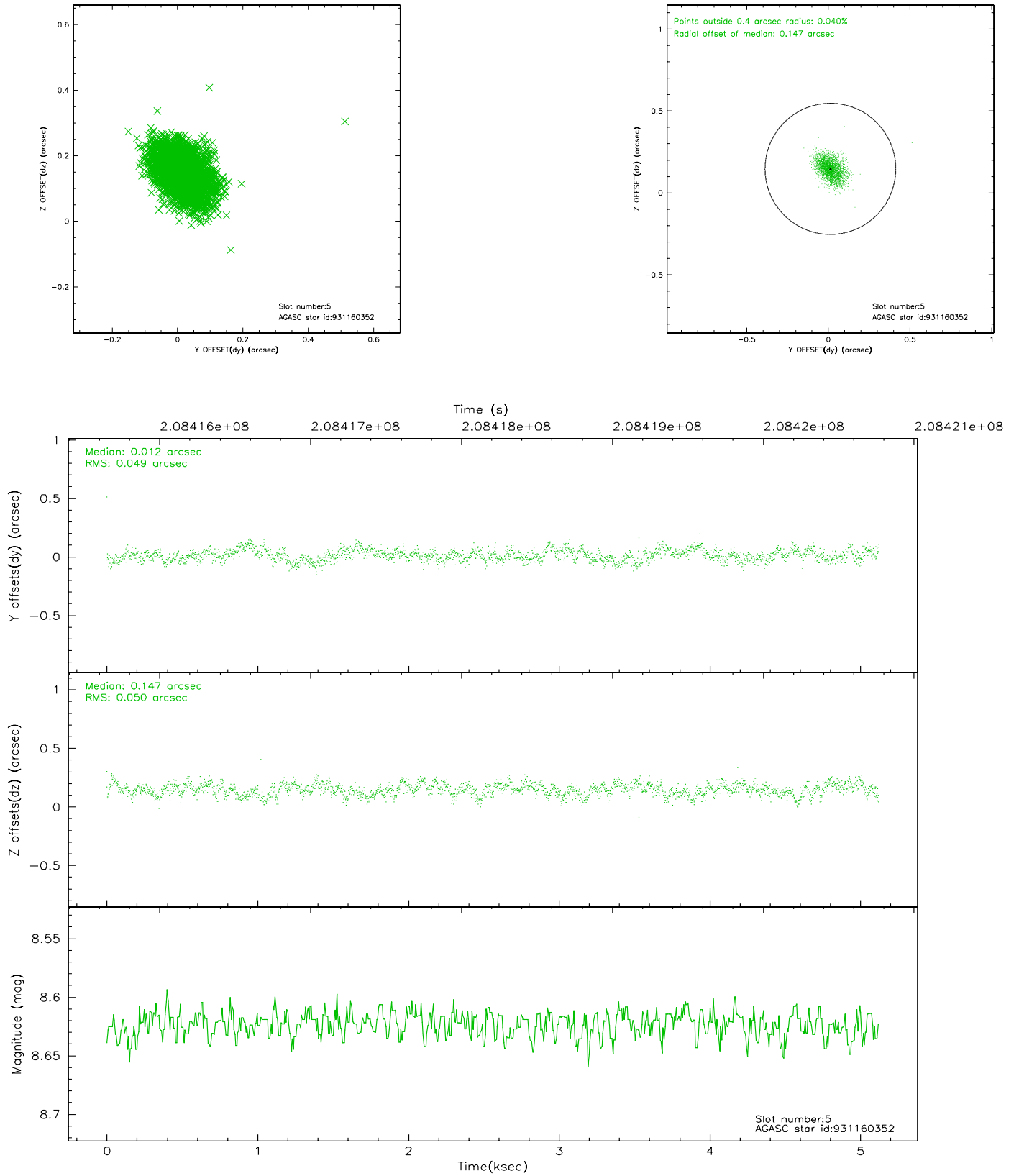
2.4.1 Slot 3



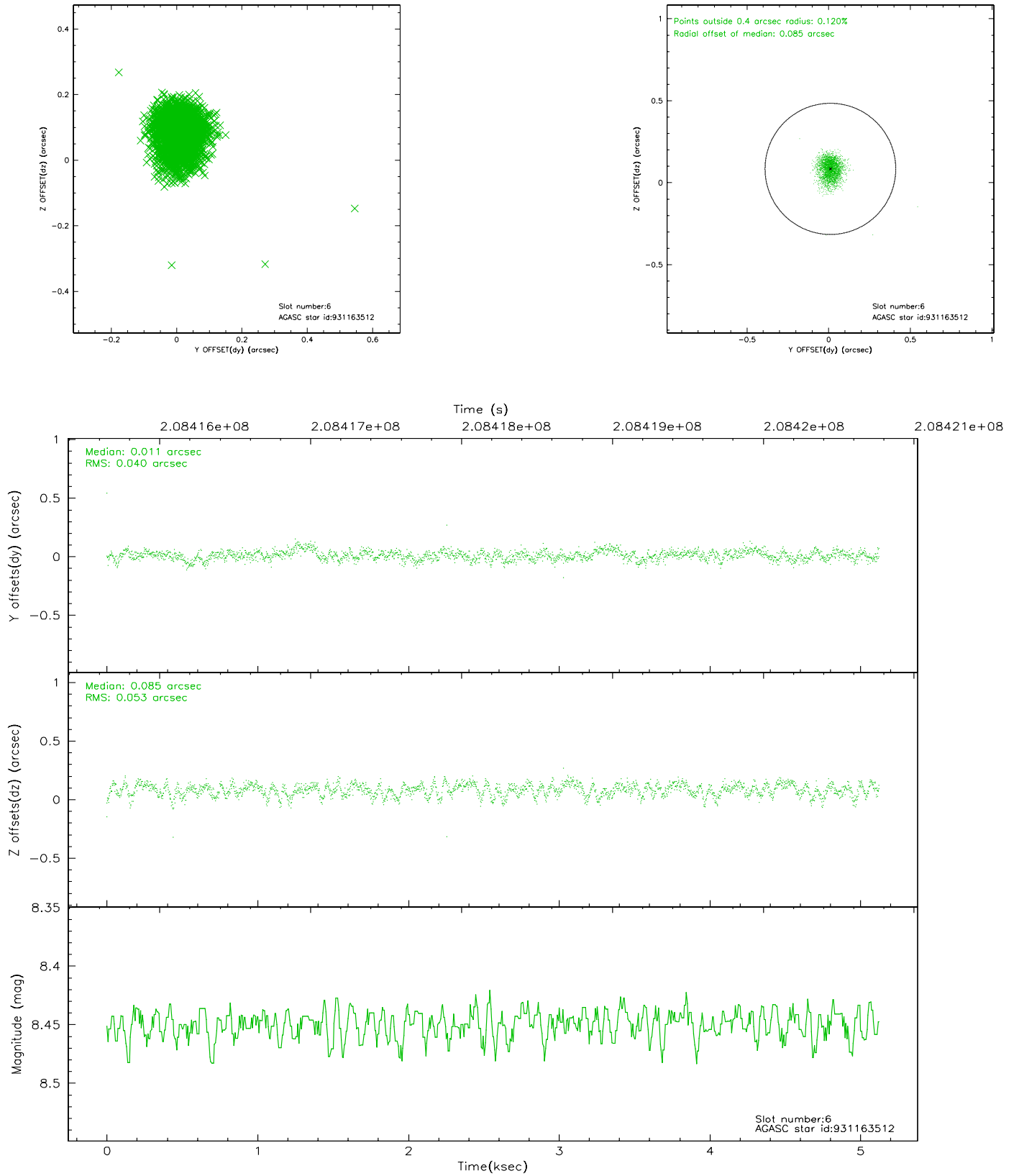
2.4.2 Slot 4



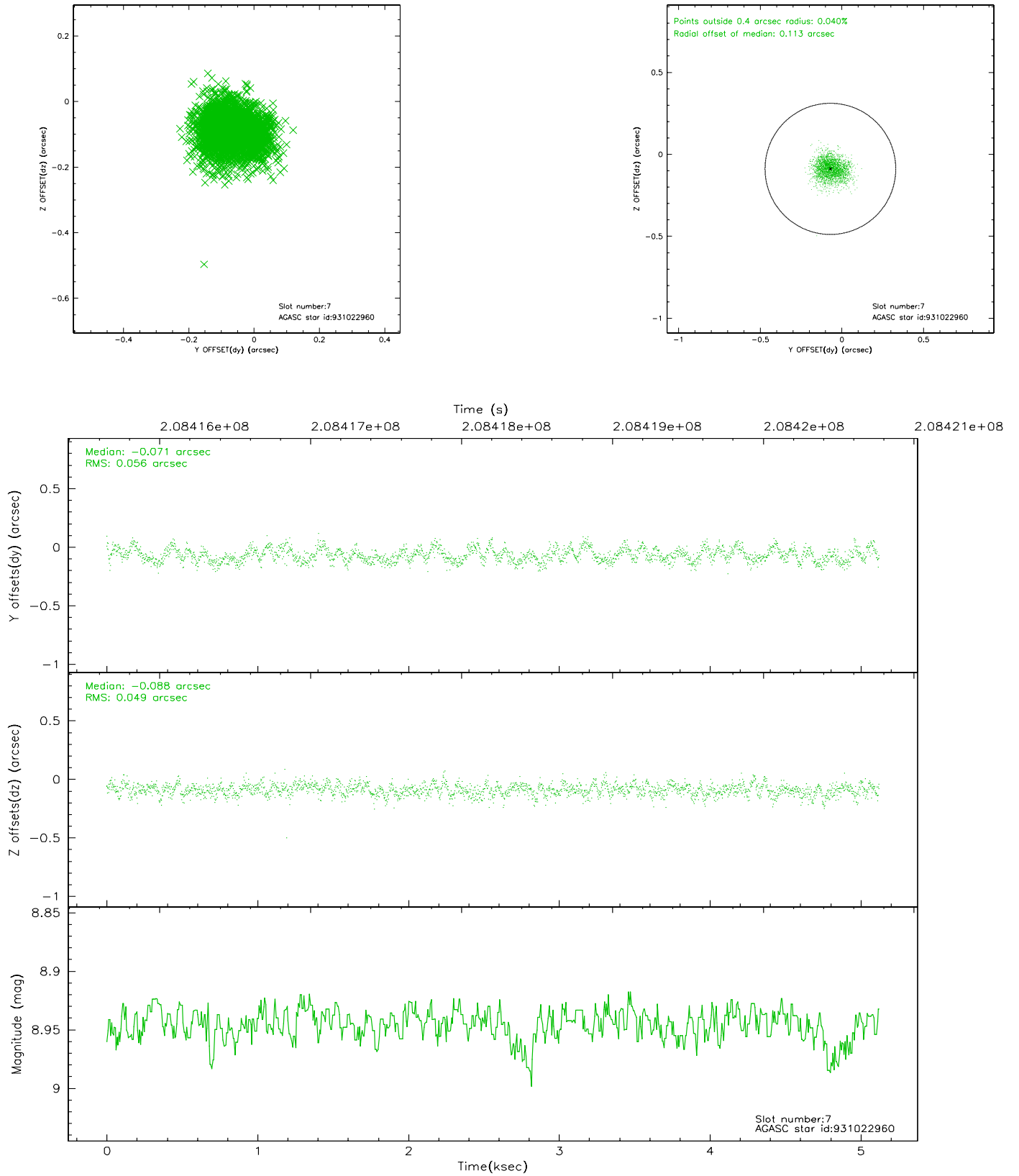
2.4.3 Slot 5



2.4.4 Slot 6

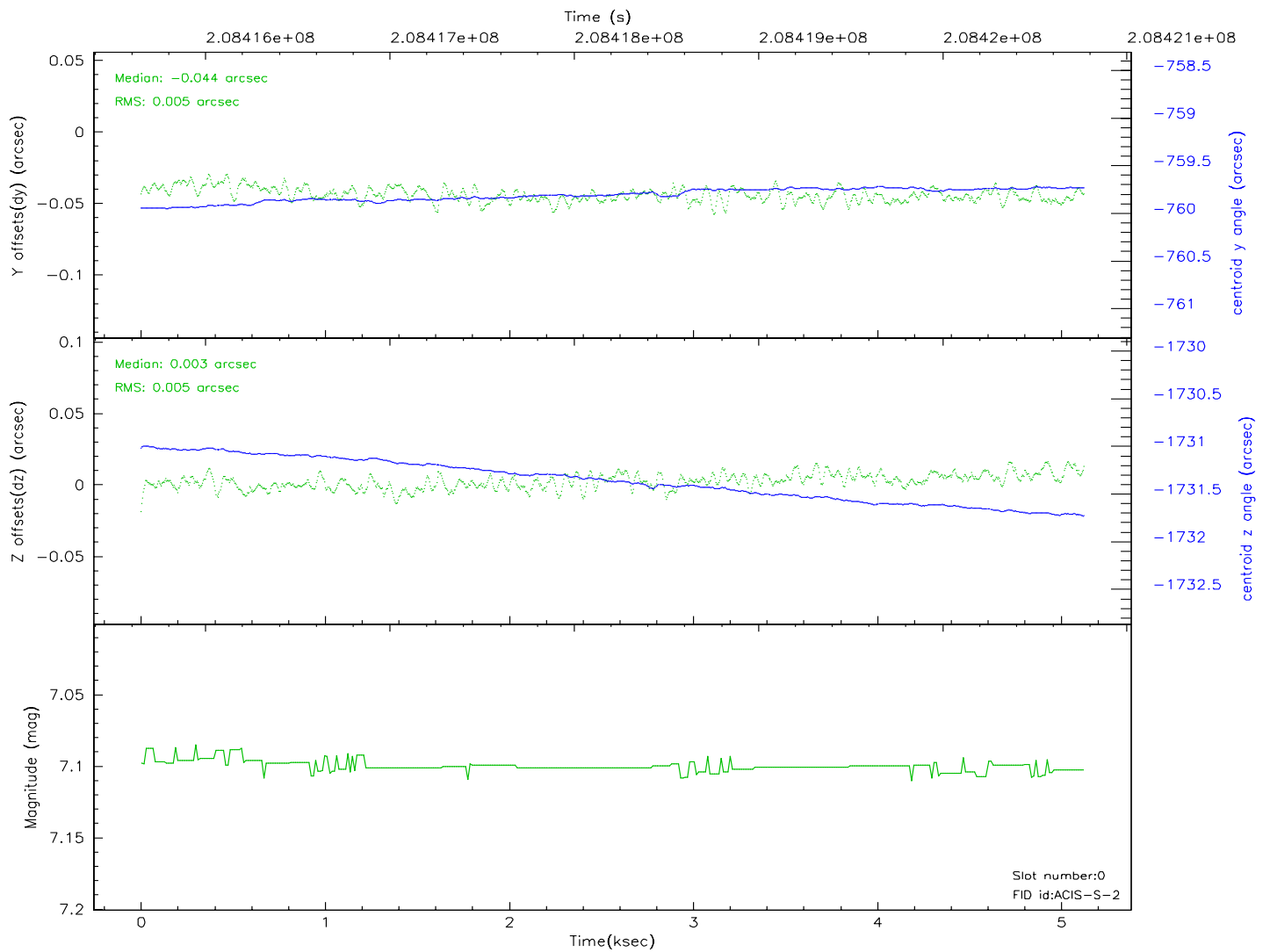
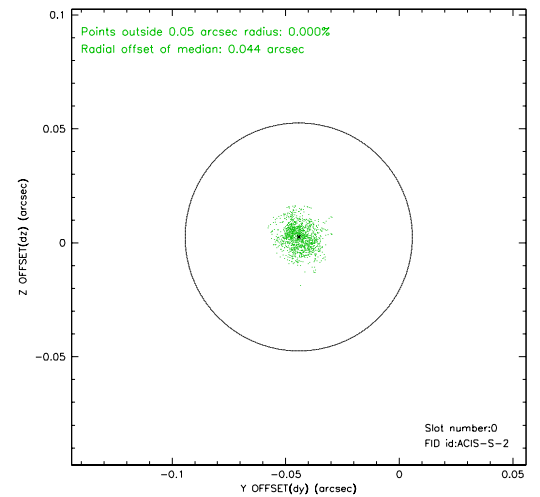
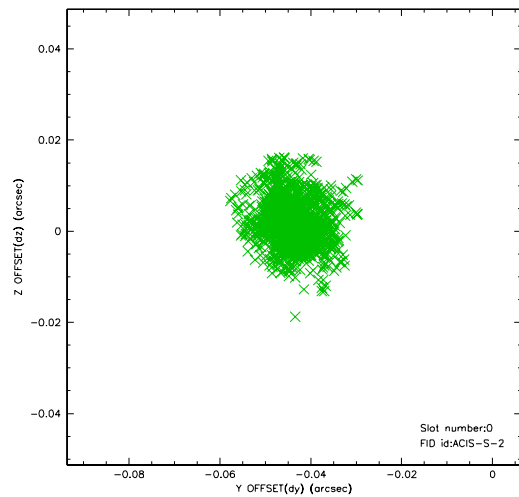


2.4.5 Slot 7

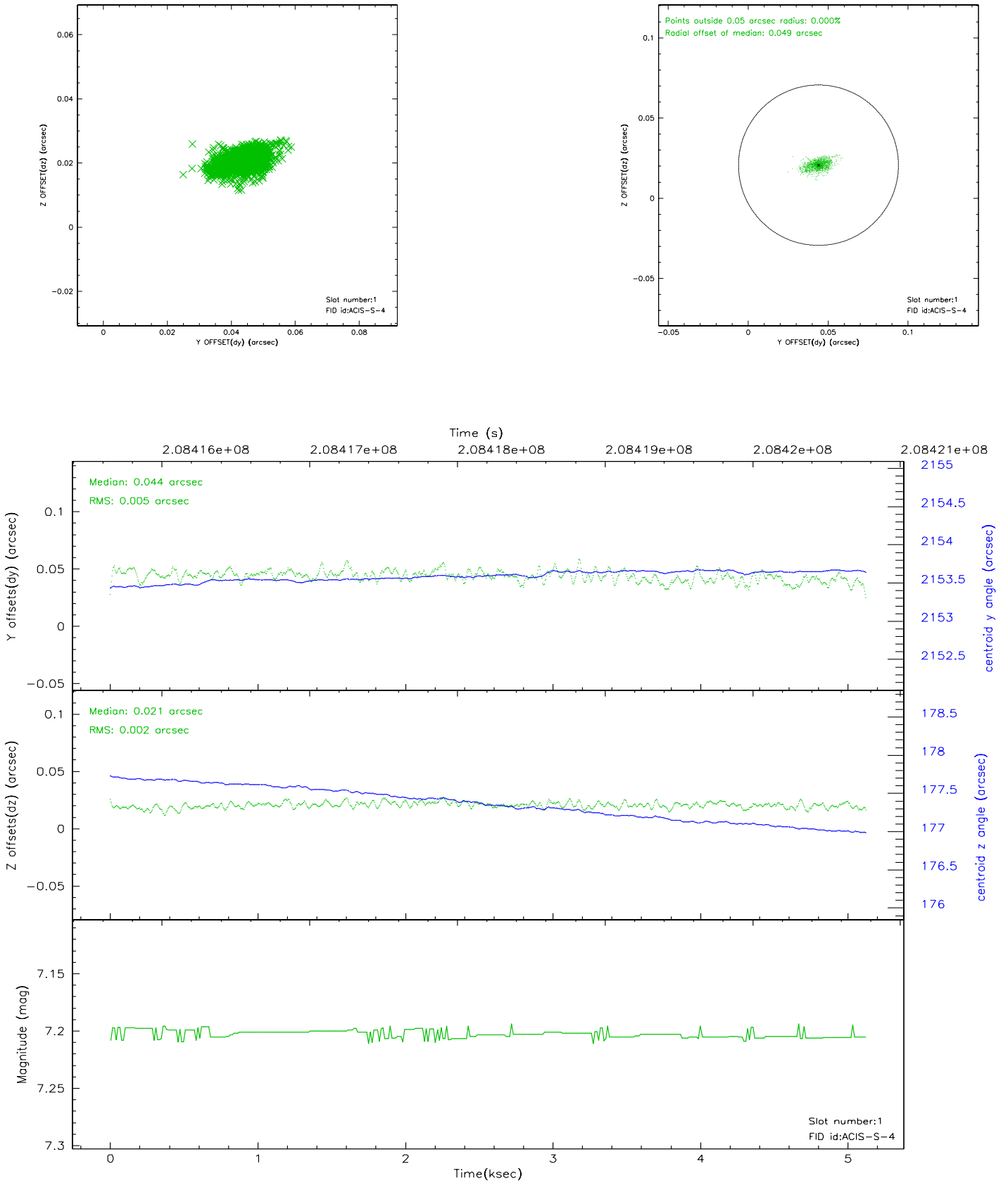


2.5 FID Slots

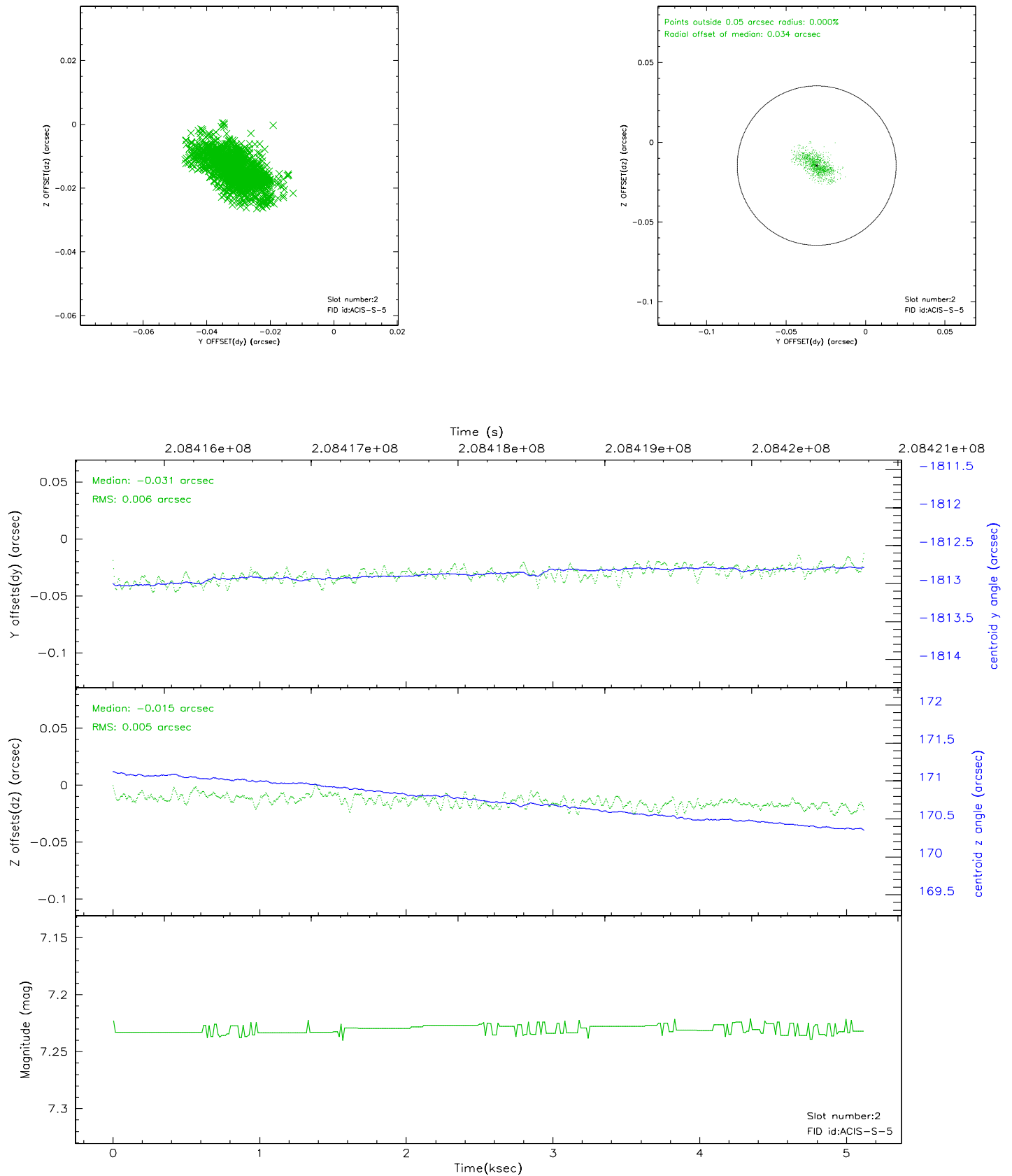
2.5.1 Slot 0



2.5.2 Slot 1



2.5.3 Slot 2



A Summary

A.1 Status

V&V Scientist	Beth Sundheim
V&V Date (YYYY-MM-DD)	2008.04.15
V&V Edition	1
V&V Disposition and Status	OK
V&V Charge Time	5.122

A.2 Comments